

## OWNER'S MANUAL

### Safe Zone Duo Car Charger

#### Wireless Earphone With Car Charger

Model: XGZ1022



This device complies with part 15 of the FCC rules. Operation is subject to the following two conditions:

- (1) this device may not cause harmful interference, and
- (2) this device must accept any interference received, including interference that may cause undesired operation.

Changes or modifications to this unit not expressly approved by the party responsible for compliance could void the user's authority to operate the equipment.



### KEY FUNCTIONS:

Allows you to drive safely, talk discreetly and charge two portable devices.  
Stay connected the way you like!



Bluetooth



Auto  
Charging



Smart  
Power On/Off



2 USB Ports



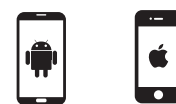
1.5 Hrs Call



Phone Charger

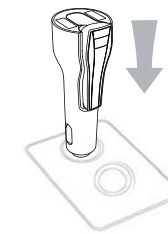
### Specifications

Product Name: Safe Zone Duo Car Charger  
Battery Type: Li-polymer battery  
Continuous Talk Time: about 1.5 hours  
Standby Time: 48 hours or more  
Car Charger Output: 5V/2.4A  
Input Voltage: 12~24V



Compatible with all smartphones.

### ① Start



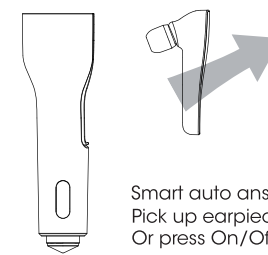
Insert the car charger into cigarette lighter socket.  
Earpiece will begin charging when the car is started.

### ② Wireless Connection



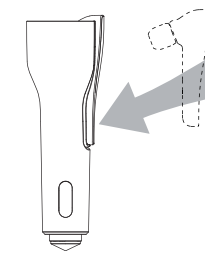
Press On /Off button  
for 2 seconds to enter search mode.  
Go to the Bluetooth setting of your device and  
select "Safe Zone".

### ③ Answer Call



Smart auto answer feature.  
Pick up earpiece for auto answer call  
Or press On/Off button to answer call.

### ④ End call



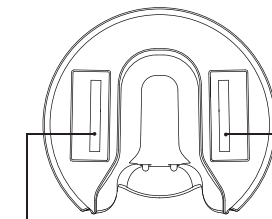
Insert back earpiece to auto end call.  
Or press On/Off button to auto end call.

### ⑤ On/Off Button Functions



Press Once: Play or pause music.  
Double Click: Redial last number.  
Press and hold for 2 seconds:  
Reject call.

### ⑥ USB Ports



2 USB ports. Total output 2.4A