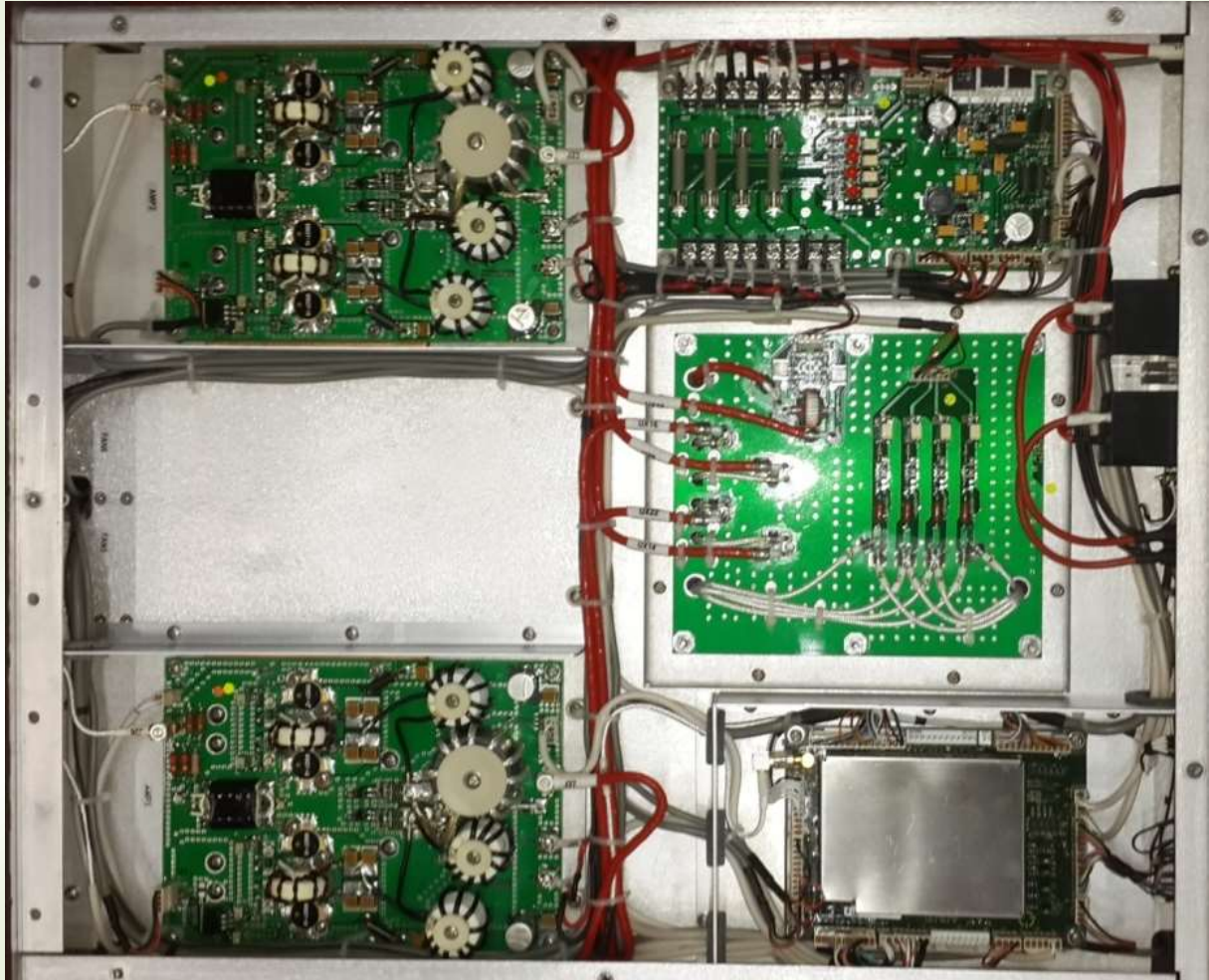
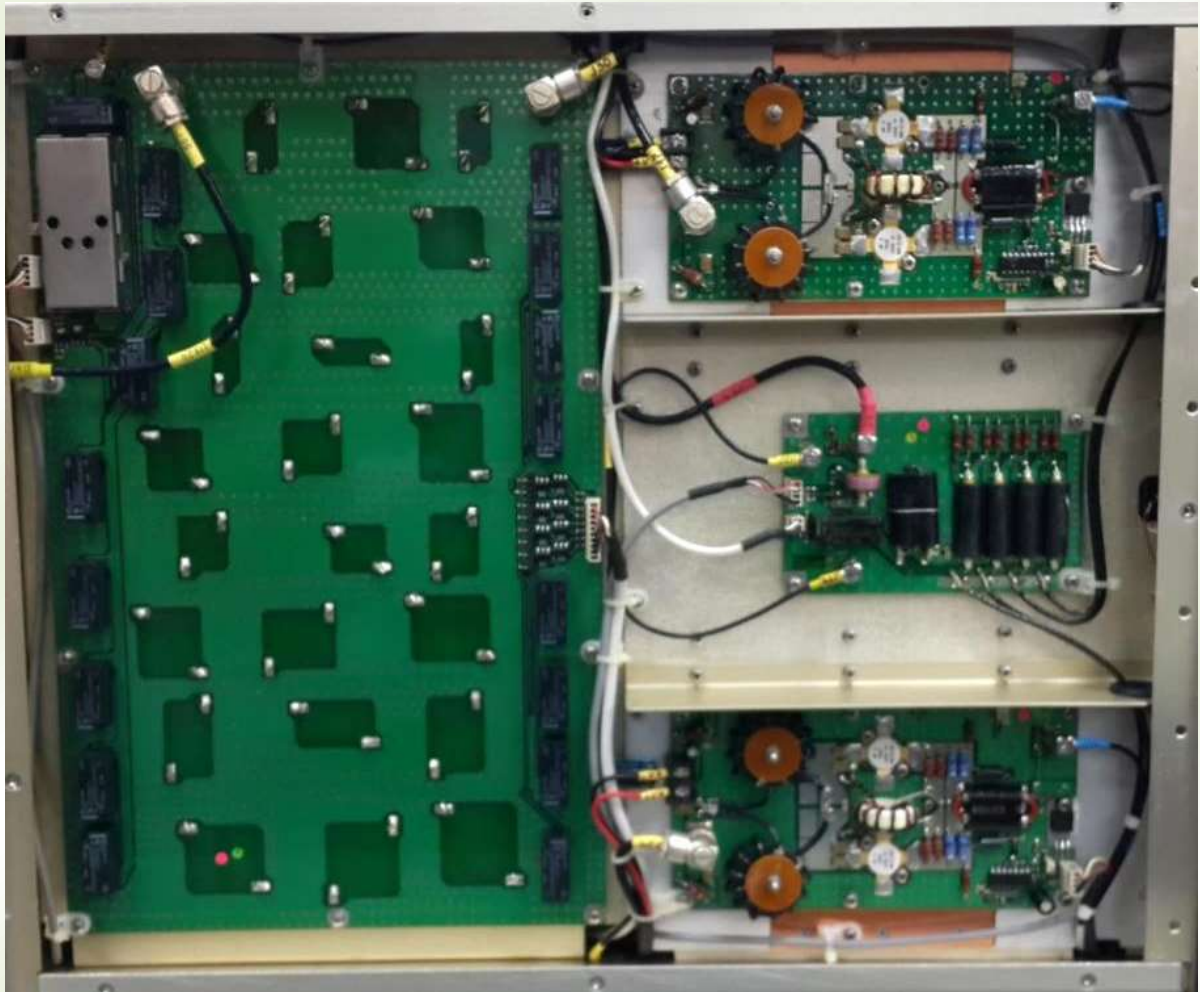


Internal Photographs – 1000W amplifier

1000W amplifier – top view



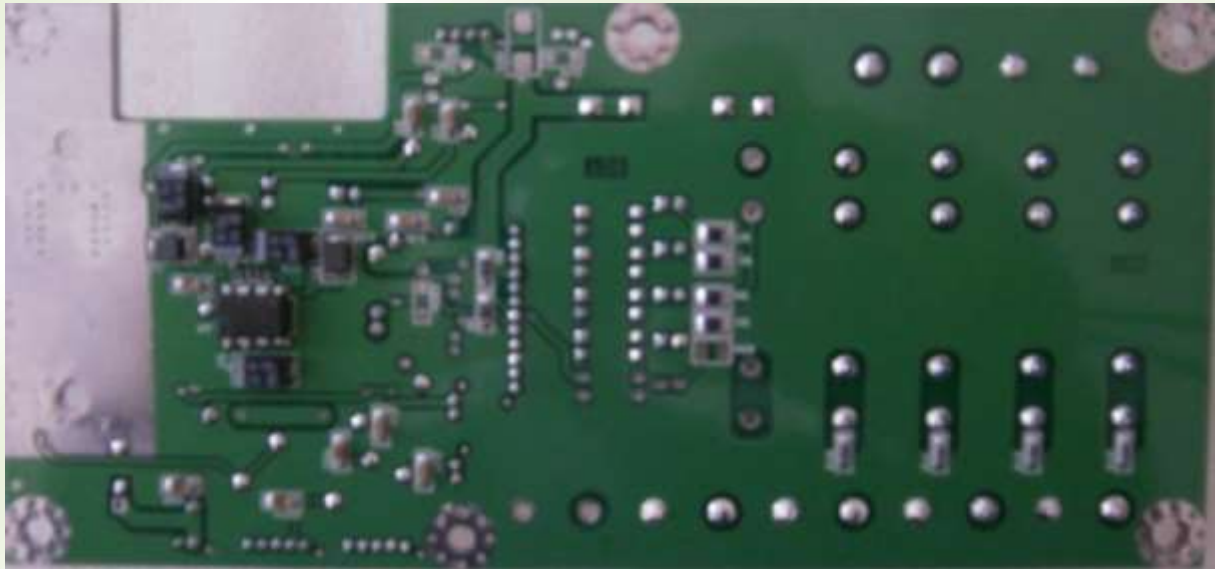
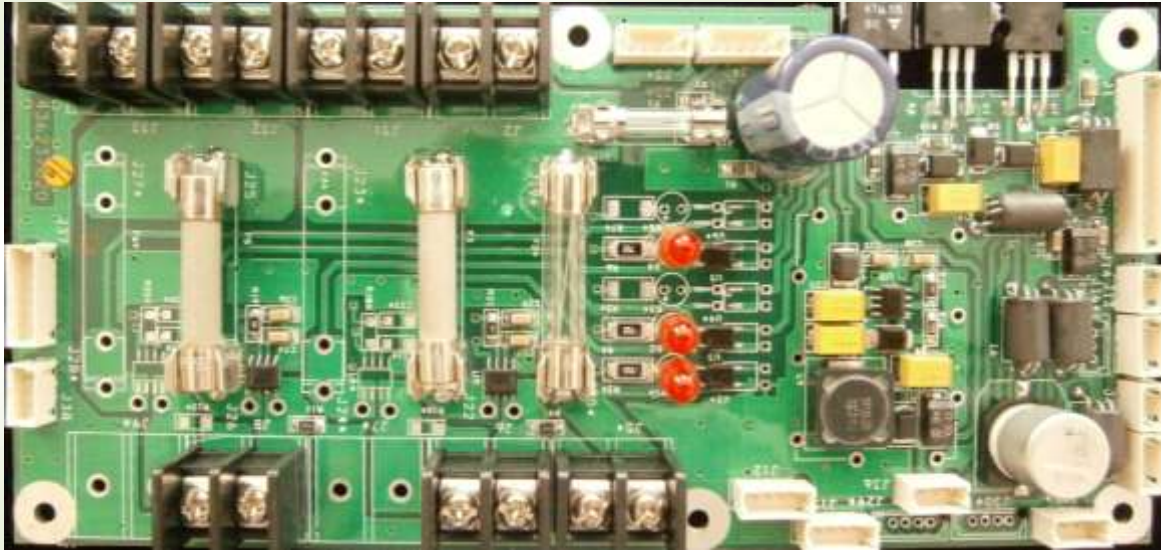
1000W amplifier – bottom view



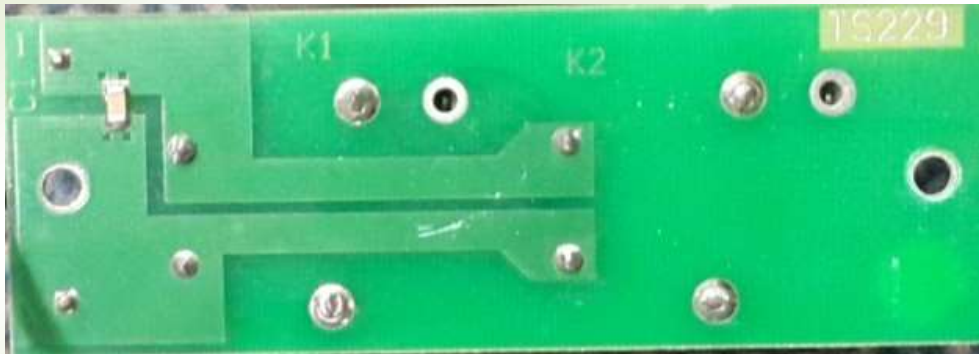
Boards of the 1000W amplifier

Description	Qty.
POWER DISTRIBUTION PCB	1
POWER RELAY PCB	1
CONTROLLER MODULE	1
COMBINER	1
RF POWER AMPLIFIER MODULE	4
SPLITTER MODULE	1
LOW PASS FILTER MODULE	1
28V DC	1

POWER DISTRIBUTION BOARD



POWER RELAY BOARD

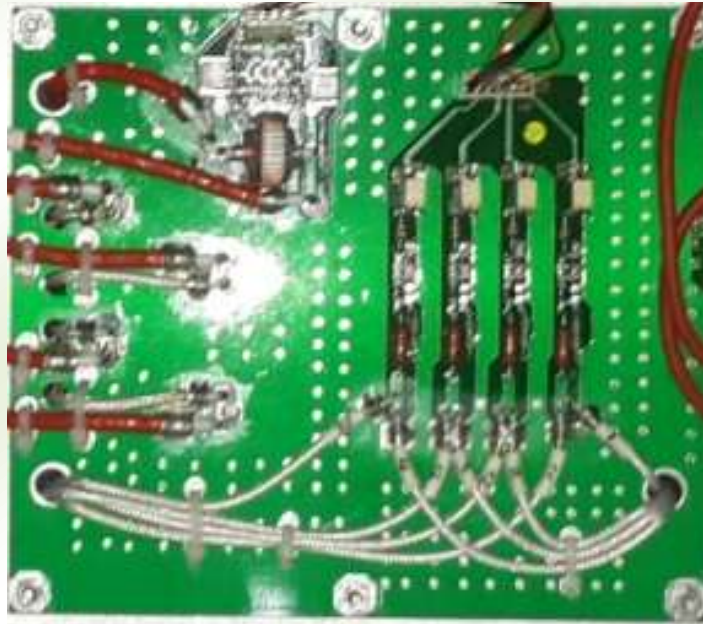


CONTROLLER BOARD

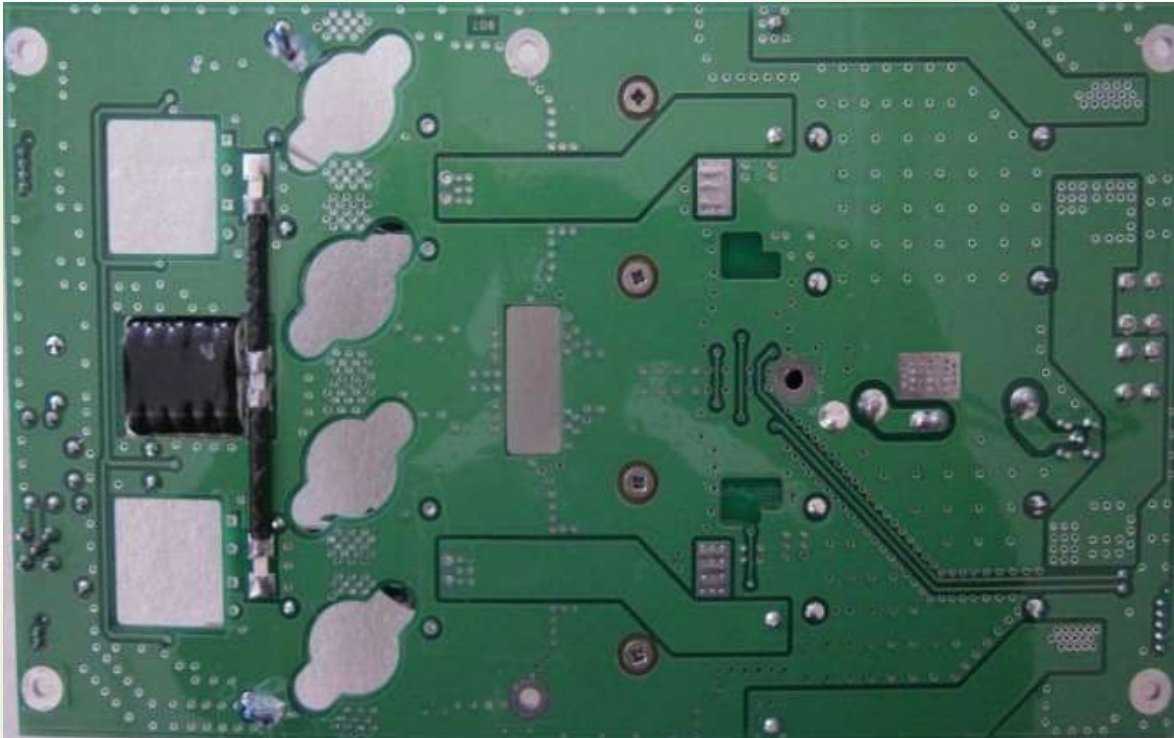
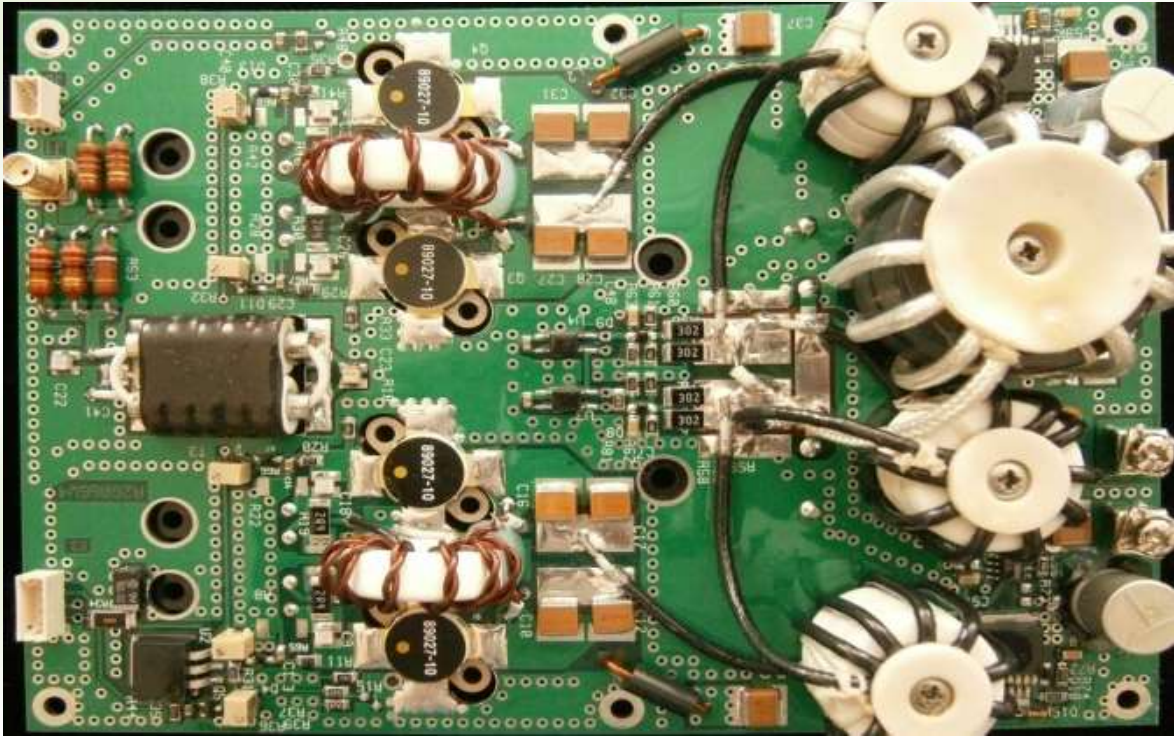




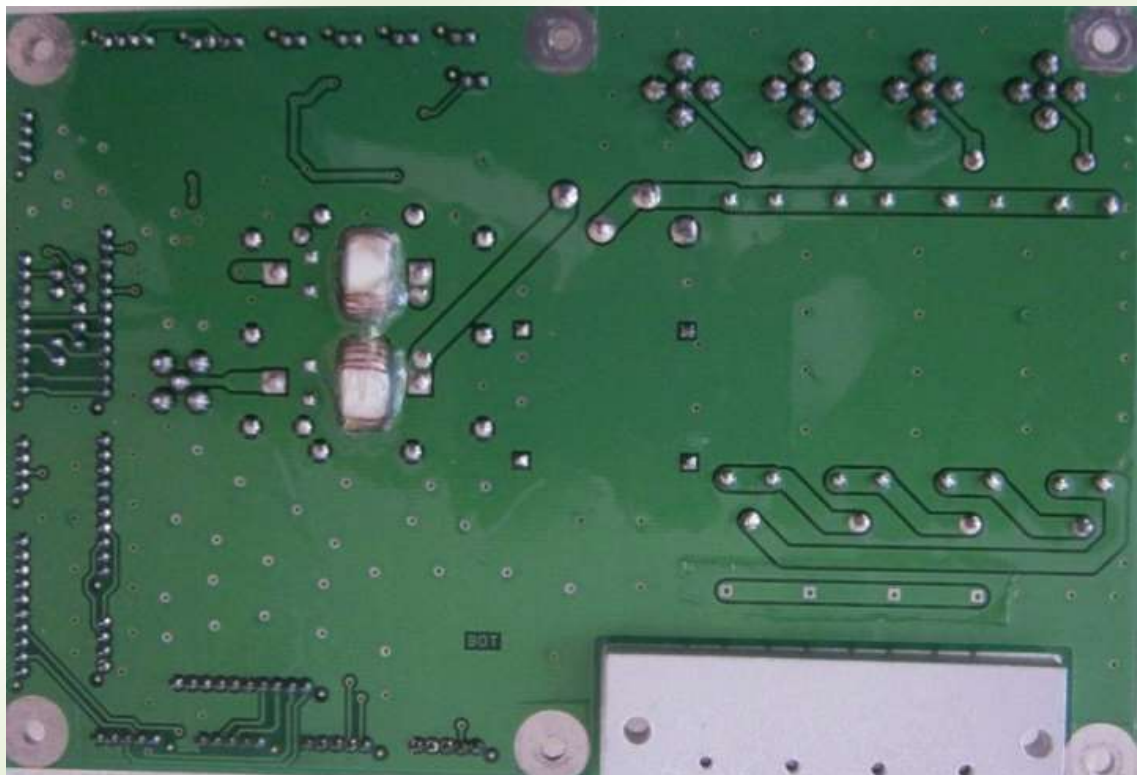
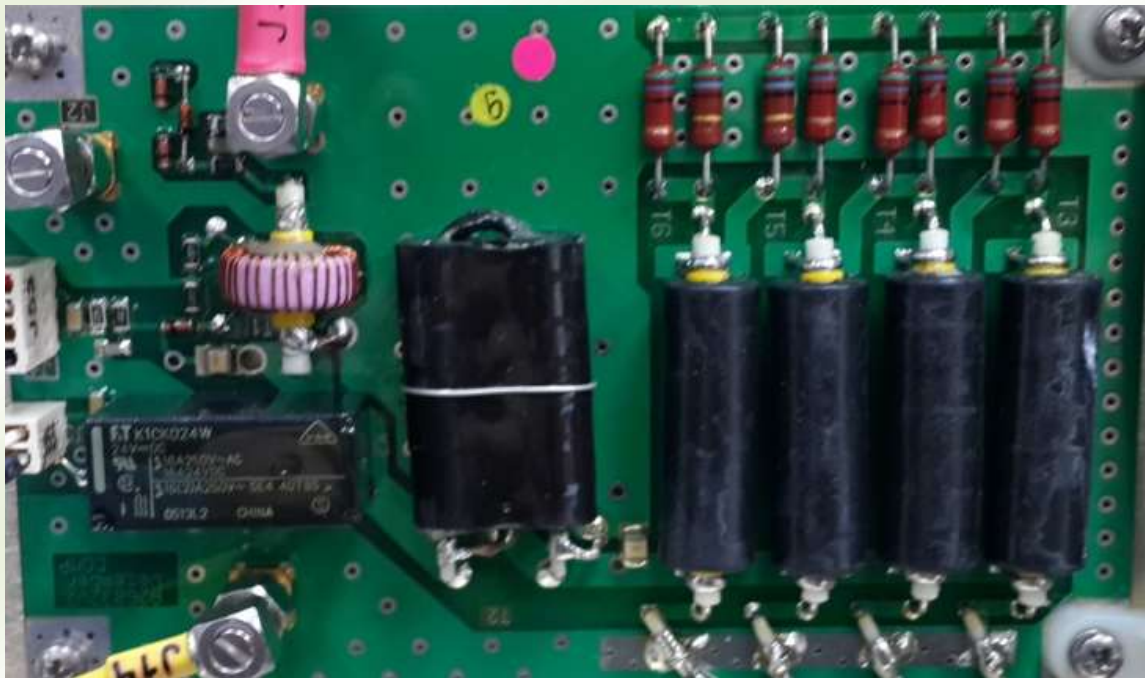
COMBINER



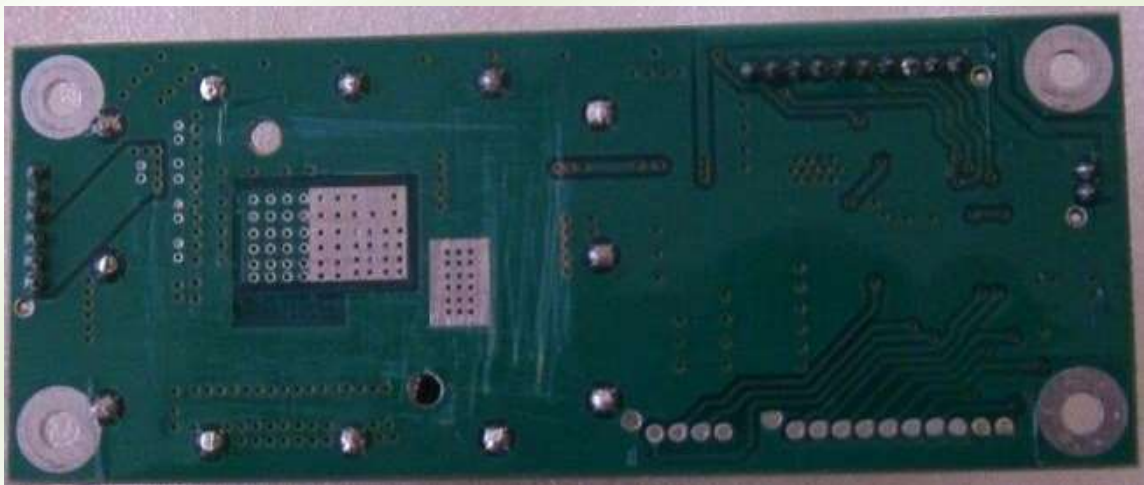
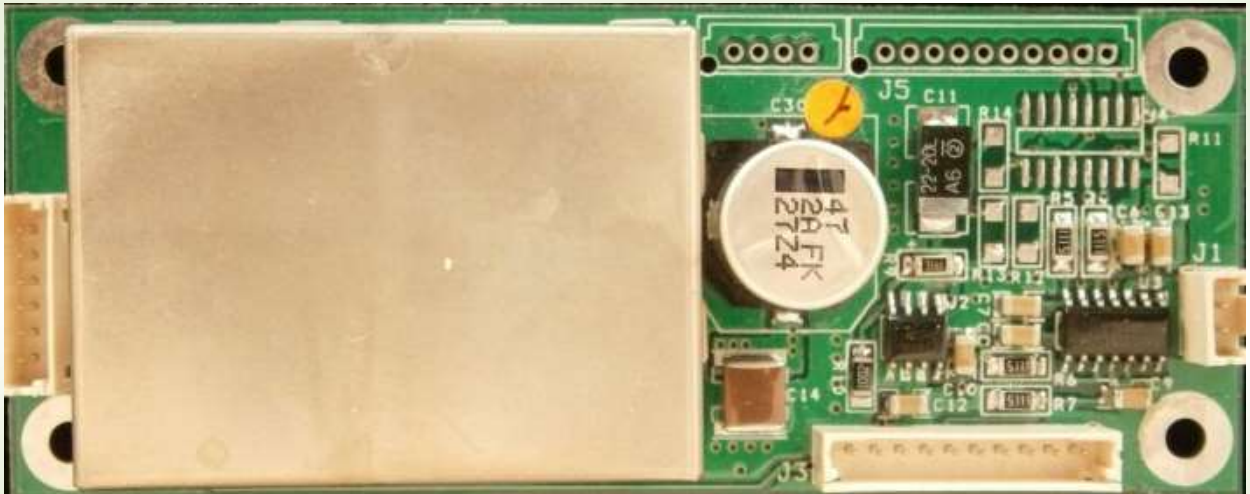
RF POWER AMPLIFIER BOARD



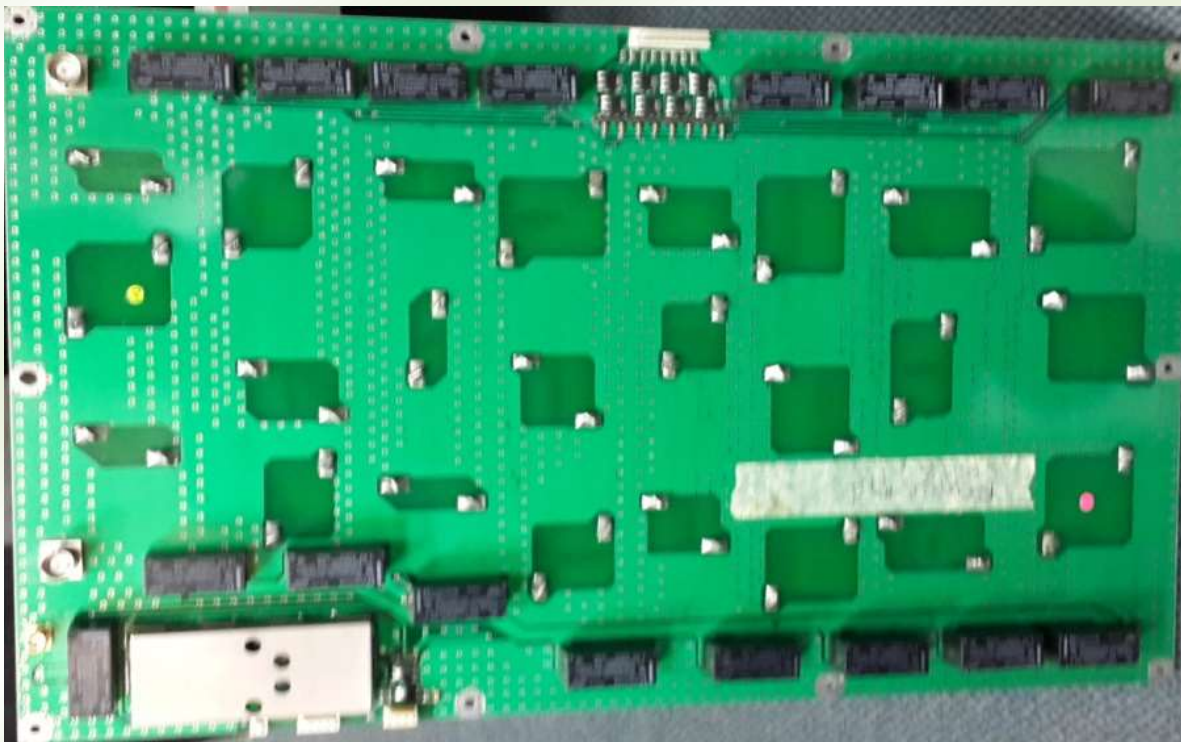
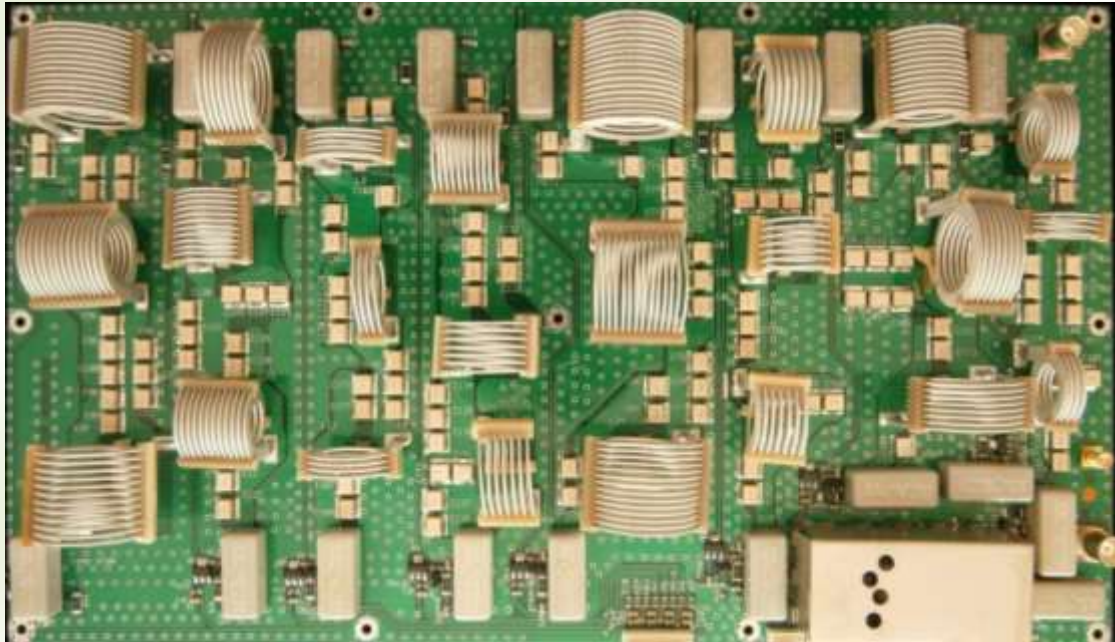
SPLITTER BOARD



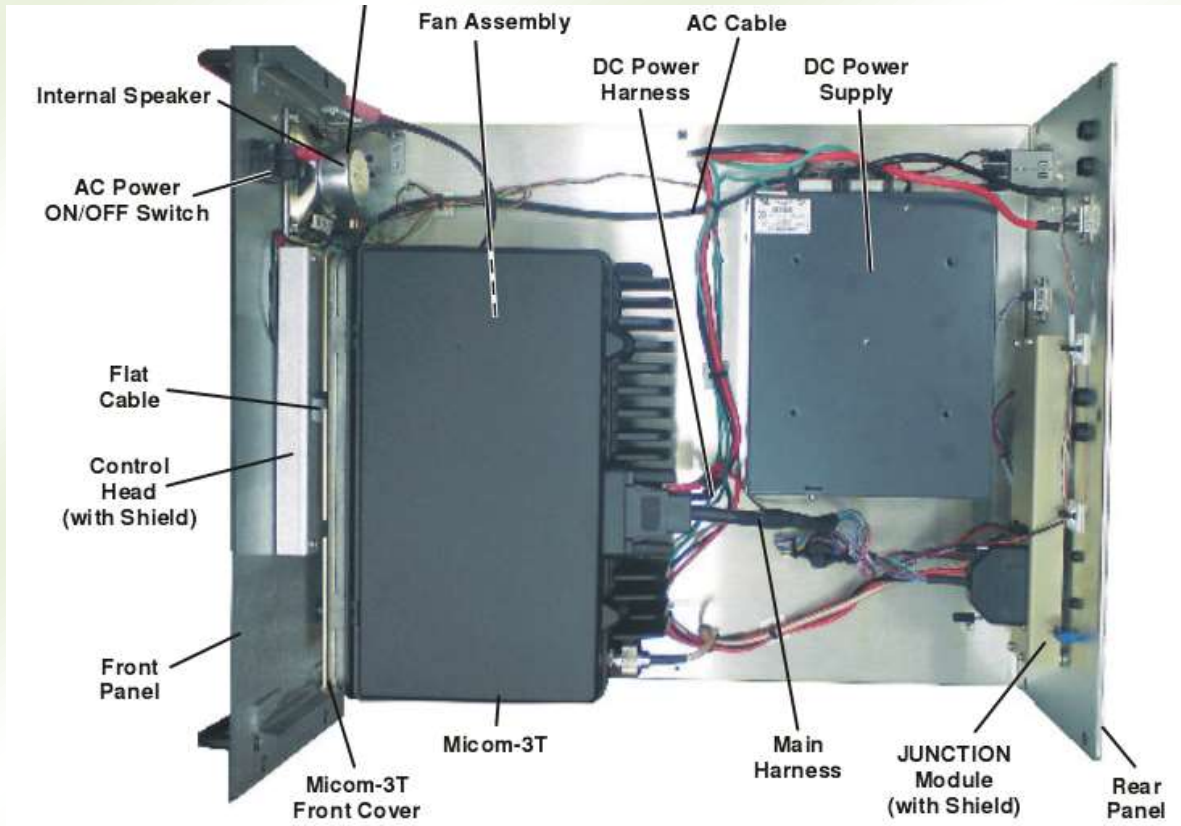
PS + 28V BOARD



LOW PASS FILTER BOARD



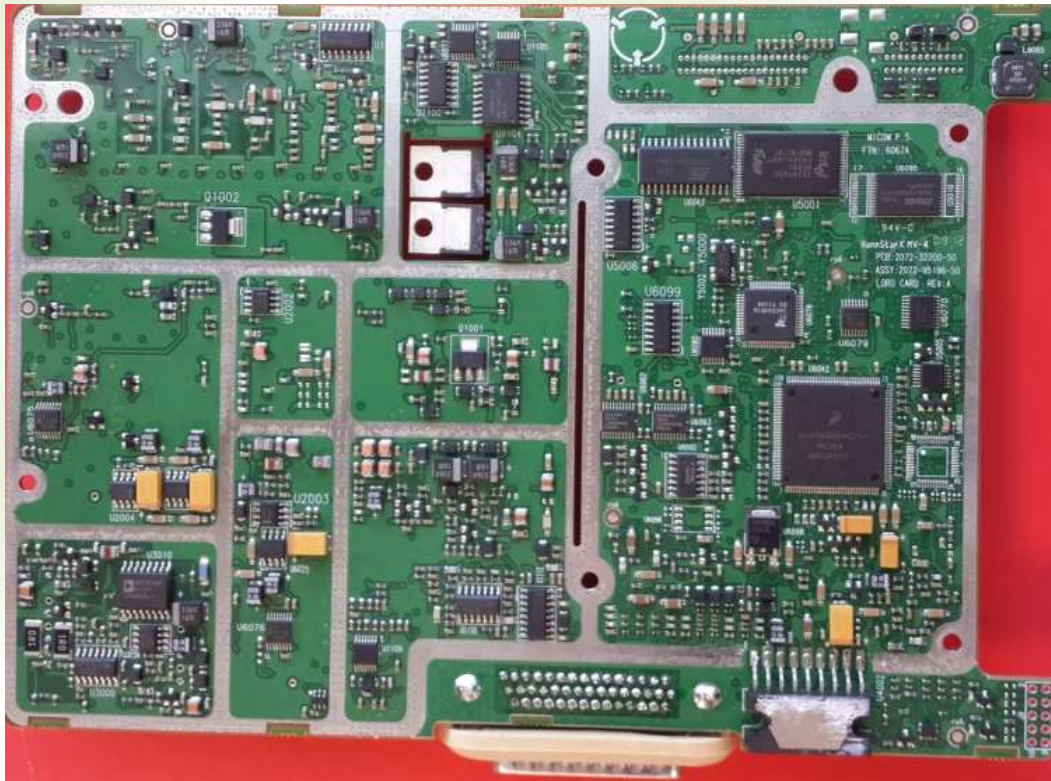
Internal Photographs – RM-125 Exciter transceiver



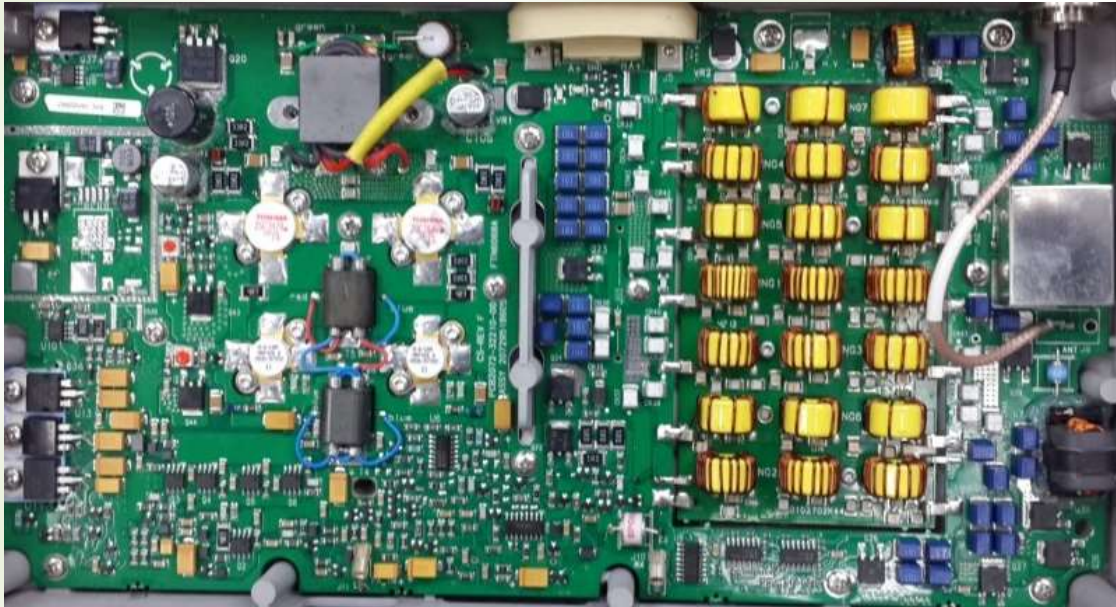
Boards of the RM-125

Description	Qty.
LORD BOARD	1
HIGH POWER BOARD	1
CONTROL HEAD BOARD	1
JUNCTION BOARD	1

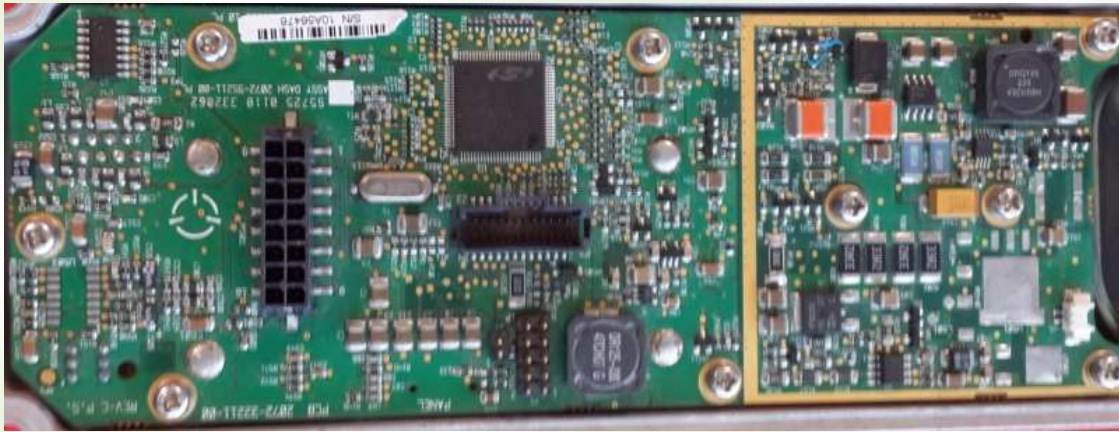
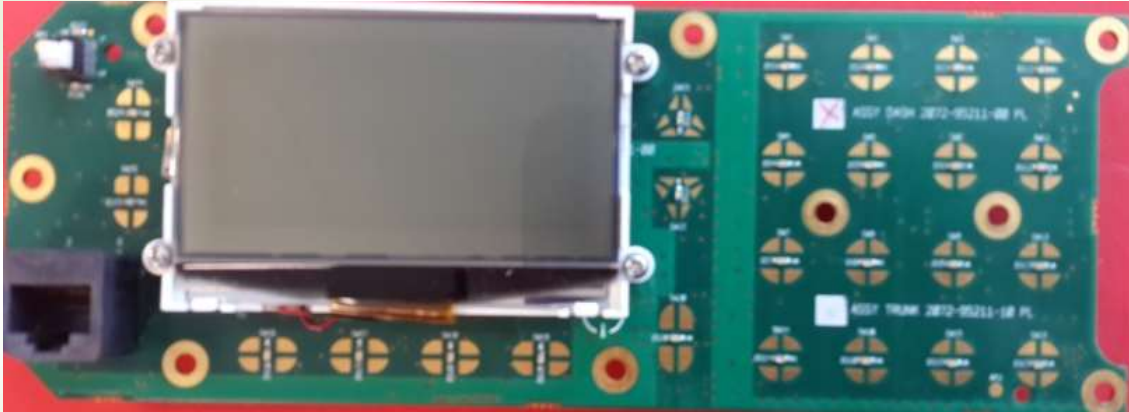
LORD BOARD



HIGH POWER BOARD



CONTROL HEAD BOARD



JUNCTION BOARD

