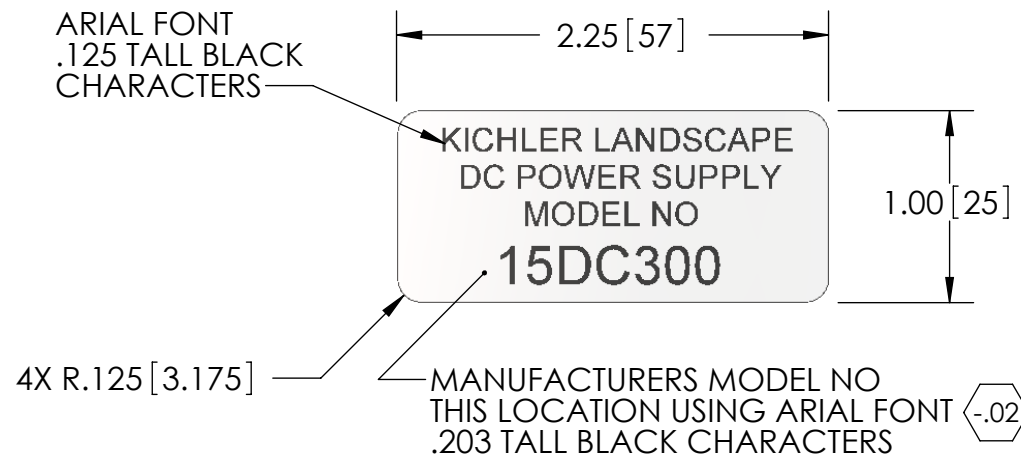


PRELIM. REV	DESCRIPTION	DATE	CHANGED BY
-.01	RELEASED FOR QUOTE	09/28/2012	DJS
-.02	DEFINED MODEL NUMBER 15DC300.	12/03/2012	DJS
-.03	RELEASED FOR TOOLING	04/03/2013	DJS

NOTES:
1. BACKGROUND COLOR: WHITE
2. TEXT COLOR: BLACK
3. SUITABLE FOR OUTDOOR LOCATION USE
4. SUITABLE FOR SUBSTRATE: POLYMERIC MATERIAL (PVC)
5. SUITABLE FOR 150°C SURFACE TEMPERATURE
6. MATERIAL: AVERY PRINTLOK LP WITH N28 OR
WIN LABEL #WIN-C1-200-W
OR ENGINEERING APPROVED EQUIVALENT
7. THIS COMPONENT TO BE RoHS COMPLIANT



NOTICE: ANY DESIGN OR OTHER INFORMATION HEREON DEVELOPED BY THIS COMPANY IS CONFIDENTIAL MATERIAL AND EXCLUSIVE PROPERTY OF THE L.D. KICHLER CO. DISCLOSURE OR REPRODUCTION REQUIRES THE WRITTEN CONSENT OF THE L.D. KICHLER CO.

ENG

<div><div>xx</div>DENOTES A INSPECTION ITEM</div>			
"mm" DIMENSION INDICATED IN [] DIMENSION IN [] OR () IS FOR REF. ONLY			
TOLERANCES (EXCEPT AS NOTED)			
DECIMAL	ANGULAR	FRACTIONAL	SCALE
NONE ±.031	± 1/2°	± 1/32	DNS
.X ±.015	DATE	DRAWN BY	CHECKED BY
.XX ±.010		JJA	APPROVED
.XXX ±.005		DJS	XXX
09/28/2012			

	KICHLER® 7711 E. PLEASANT VALLEY ROAD CLEVELAND, OHIO 44131-5552
TITLE - A LABEL, MODEL NO, 300W	
CP NO.	REV -
PART NO. LB120774	REV -.03