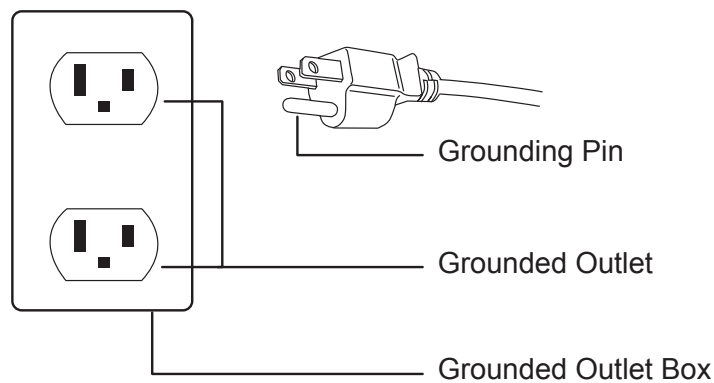


Instruction Manual



GROUNDING INSTRUCTIONS

This product must be grounded. If it should malfunction or break down, grounding provides a path of least resistance for the electric current to reduce the risk of electric shock. This product is equipped with a cord with an equipment-grounding conductor and a grounding plug. The plug must be plugged into an appropriate outlet that is properly installed and grounded in accordance with all local codes and ordinances. **Danger-Improper connection of the equipment-grounding conductor can result in a risk of electric shock. Check with a qualified electrician or serviceman if you are in doubt as to whether the product is properly grounded. Do not modify the plug provided with the product – if it will not fit the outlet, have a proper outlet installed by a qualified electrician.**



Product Parts



Product Parts

Air Bags Massage Position



Before use

1 Before use (installation position)

- Make sure there is enough space to recline the chair and for the user to get in and out of the chair freely. PLEASE MAKE SURE TO USE A MAT OR RUG UNDER CHAIR IF YOU PLACED ON TOP OF A HARD SURFACE LIKE HARWOOD AND CERAMIC FLOORS.



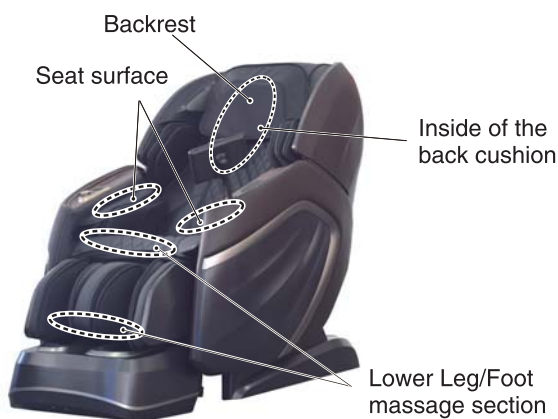
- Do not expose the product to direct sunlight or a high-temperature place (e.g., in front of heating equipment or by a window where sunlight can cause the synthetic leather fade, melt or crack.)
- Place a mat below the product to avoid floor damage. The mat should cover the product's area in contact with the floor and the footrest's area in contact with the floor (minimum dimensions: 63"x31.5"). See the figure.
- Install the product close to a power socket.

2 Check the space around the product.

Make sure there is no person, pet or other object close to the product.



3 Make sure there is no foreign matter in the seams of the product.



Caution

- Do not put hands or feet between footrest and seat base.
- Do not put hands or feet between footrest and side panel.
- Do not put hands or feet between seat base and side panel.
- Do not put hands or feet between upper and lower part of the footrest.
- Do not put hands or feet in the gap of seat base.
otherwise injuries may happen.

4 Inspect the power line and power plug

Warning

- **Inspect the power cord of dirt or dust that may have collected. Be sure the cord is kept clean and with NO visible damage.**
Otherwise the lint and dust may lead to an electrical fire. Wipe down the plug with dry cloth.
- **Do not damage the power line or the power plug. Do not bend or twist the power cord any reason. Do not place the power cable under heavy objects such as the chair itself. Keep the power cord away from any heating source such as the heater vents, motors and anything that may generate heat.**
A damaged power line or power plug may result in electric shocks, short circuits, or fires.
Please consult the shop you bought the product or an authorized service center about maintenance method of the power line or the power plug.



Do not be entangled by the power line.

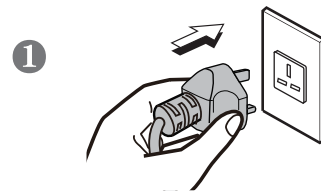
Push the interface into the power input jack till the end.

5 Power on the product

- 1 Insert the power plug into the power socket.
- 2 Turn the switch to the "I" (ON) position to activate the chair.

Warning

- **Be sure the power cord is firmly and completely inserted into the power outlet.**
Otherwise electrical shocks or fires may occur because of overheating or power shorts.
- **Abide by the regulations on use of the socket and the wiring devices strictly.**
- **Use a 110-120V~,50/60Hz power supply.**
(Do not use the product in a foreign country or connect it with a transformer without permission.)
Otherwise electric shocks, product faults or fires because of overeat may happen.
- **Do not insert or pull out the power plug with wet hands.**
Otherwise an electric shock may happen.



Before use (Continued)

6 Make sure the massage wheels are retracted



If the rollers are not at the top of the backrest in the retracted position, press "ON" button to bring back to the default position.

7 Make sure the fabric is not damaged nor cracked

Inspect the synthetic leather portion in which the massaging rollers travel along the backrest. Be sure there is no damage or unusual wear.

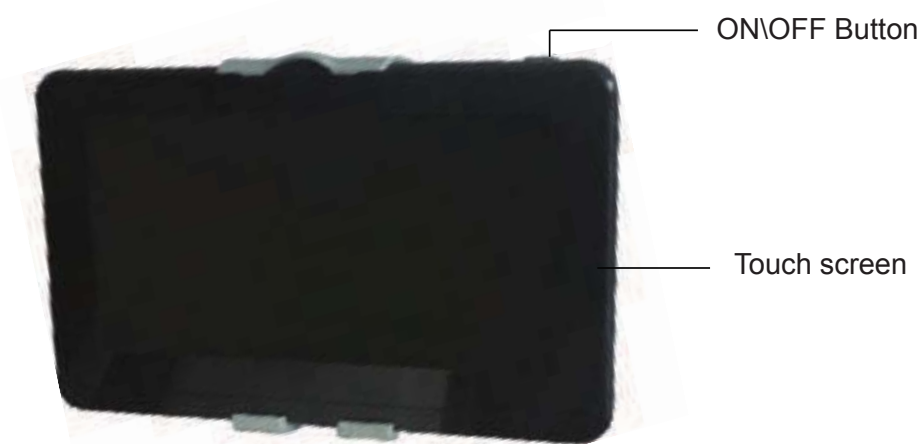


Warning

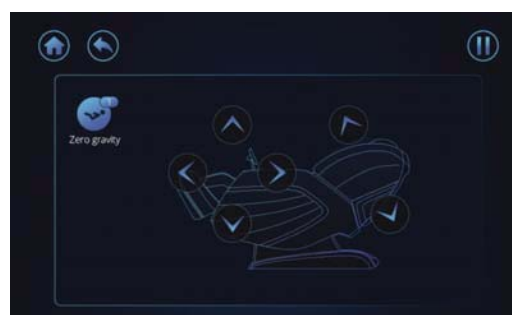
- Before use, raise the back cushion and check whether fabrics lining pointed out in the figure are undamaged. (Even if the fabric is slightly damaged, stop the product immediately, pull out the power plug and send notify the manufacturer for a replacement cover.)
If the products used when there is fabric damage, you may get injured or get an electric shock.

The controller instructions

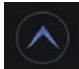
Power switch on the top of controller



1. Power switch on the top of controller
 - ON /OFF button
 - Press this button to start massage chair. Touch any massage function icon to start massage.
 - Press this button again to turn off the massage chair, massage chair will return to its original position.
2. Touch screen:
 - There are 7 functions in the middle of the screen for user to select.
 - Setting is on the top left corner.
 - Pause is on the top right corner.



Position:

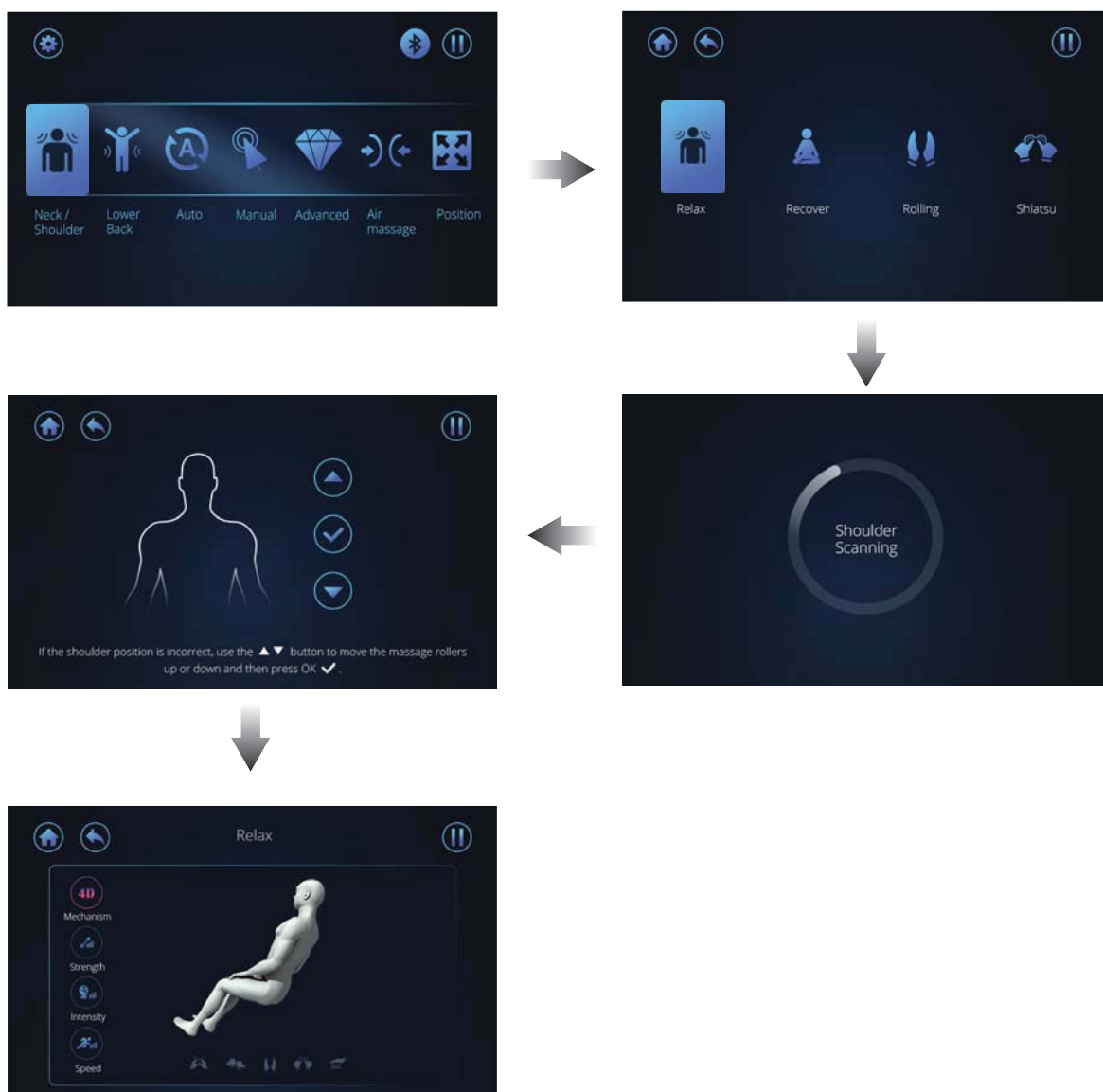
1. User can adjust backrest/footrest incline/recline by touching the icon  . when the desire position is reached, touch the icon again to stop the adjustment.
2. The button for the legrest allows you to extend or retract the length of the legrest.
3. Zero gravity: Touch this icon to activate the zero gravity position, which can be adjusted at two angles.
4. Touch bluetooth icon can control the bluetooth on and off.

Note: Zero gravity icon is NOT controllable in the massage programs with angle adjustment.

Operation guide

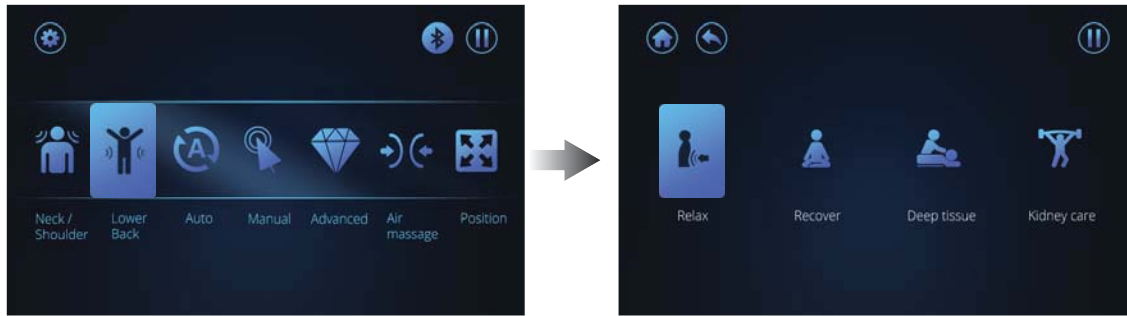
1. Neck & Shoulder

- Touch this icon, the screen will change to the page [Neck & Shoulder]
- There are 4 auto massage programs, if 1 of 4 auto program is activated, chair will automatically perform a shoulder height scan. The screen will that the [Shoulder scanning] is being conducted.
- The roller will go to shoulder adjustment automatically, user can manually adjust the shoulder height position right after the scan is complete and just before the program initiates. There is a 3 sec. window to make the adjustment.



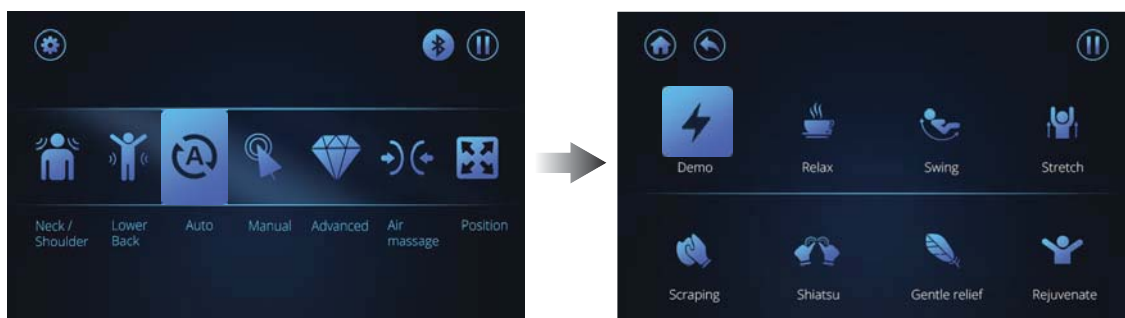
2. Lower back

- Touch this icon, the screen will change to the page [Lower back]
- There are 4 auto message programs. Select 1 of 4 auto program to start the preset program.



3. Auto

- Touch this icon, the screen will change to the [Auto] page.
- There are 8 auto message programs. Select 1 of 8 auto programs to start your preset programmed message.



NOTE:

(1) 4D Intensity:

- There are 8 different levels available for adjustment to suit various massage strength.
- In Auto programs, users can adjust 4D intensity instead of Strength and Speed. Strength and Speed will be locked for better massage experience.

(2) Air Intensity :

- There are 5 different levels available for adjustment.

After switching to other pages, click the name of the top massage program to return to the adjustment interface.



4. Manual

- Touch this icon, the screen will change to the [Manual] page .
- There are 4 programs for different part massage areas of massage for the back.
- User can select the program preferred, then the auto program will start.
- Kneading/Tapping/Shiatsu has two kinds of massage techniques for selection.



NOTE:

(1) 4D Intensity:

- There are 8 different levels for the 4D intensity.
- In massage mode, the intensity will set to default.

(2) Intensity / strength / speed:

- There are 5 different levels for adjustment.

(3) Upward / downward:

- When pressing the [Spot] button, it will freeze the massage rollers from moving up or down, concentrating the massage at that point.
- In order to change the spot location simply press the up or down icon.

(4) Roller width:

- The width of the massage can be adjusted for tapping, shiatsu, rolling. Press the left and right icons.

(5) Spot:

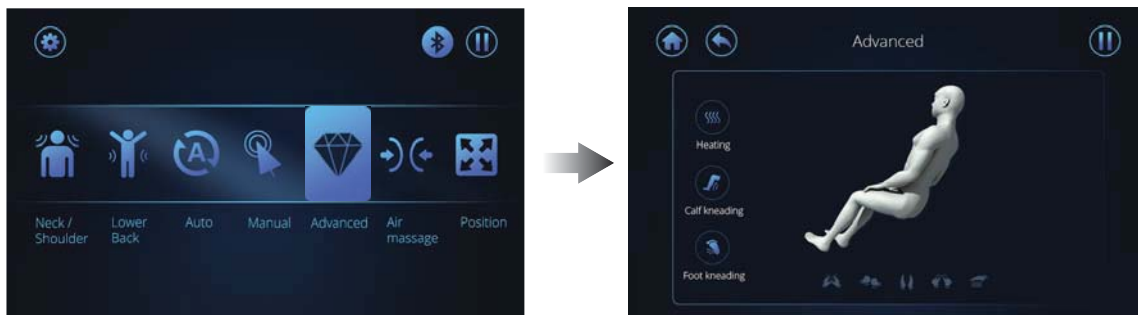
- The spot massage allow user to select spot for any part on the back.
- Touch the icon once to activate spot massage at the desired location.
- Touch again to stop the function.

(6) Partial:

- The partial massage allow user to select a region(1/4 of the back).
- Touch the icon once to activate partial massage.
- Touch again to stop the function.

5. Advance

- When pressing [Advanced], the screen will change to the [Advance] screen.
- There are 3 advance programs to select from.
- User can select the program preferred, then the program will start.



NOTE:

- Heating:
The heated rollers will automatic activate in the auto program.Touch this icon to turn off the roller heat. Touch again to activate it.
- Calf kneading:
When selecting [calf] you can control the speed of the kneading.
- Foot kneading:
The footrest is equipped to knead (rollers) and compress(mechanical).

6. Air massage

- Touch the [Air massage] icon and the screen will change to the screen to [Air massage] menu.
- There are 4 programs to select from.
- Select a program to star the massage
- There are 5 different levels of air intensity available for adjustment.



7. Setting

- Touch the [Setting] icon on the top right corner , the screen will change to the [Setting] menu.
- User can select the language/ Touch volume / Screen sleep/ Screen brightness in this page.



Control Buttons on the side panel



After massage

- 1** Turn off the power switch on the controller.
- 2** Pull the power switch to "O" position.
- 3** Pull out the power plug.



Warning

- **After using, it is recommended to put the power switch to the OFF position and pull out the power plug;**
otherwise accidents and injuries by playing with them by children may happen.

Cleaning and maintenance

Cleaning of the synthetic leather

Wipe the synthetic leather with a soft dry cloth.

- Do not clean the product with solutions containing chemicals such as thinners, gasoline and alcohol.
- Be sure that leather cleaner will not harm the synthetic leather by reading the label.
- If the synthetic leather is very dirty, wipe it with the method below.

- ① Wet a soft cloth into water or 3% to 5% neutral detergent containing hot water and wring it out.
- ② Be sure the soft cloth is well wrung out till there is NO water dripping from the cloth.
- ③ Wipe surface of the synthetic leather with the soft cloth.
- ④ Be sure to rinse out the cloth multiple times when wiping down.
- ⑤ Have the synthetic leather dry naturally. Do not use dryer.

- If it is difficult to remove the stains on the synthetic leather, try soak a piece of melamine foam into a neutral detergent to wipe down several times.
- Do not dry the surface by a hair dryer.
- Surface of the synthetic leather may fade or discolor if an unappropriated detergent is used. Test the cleaning solution in small section prior to fully applying.
- Do clean the hard plastic parts with any alcohol, thinner or benzene based agents. This may cause discoloring or removal of the color all together.



Cleaning of the plastic parts

1 Put a piece of soft cloth into water mixed with a neutral detergent contained hot water, wring it out and wipe the plastic parts.

- Do not clean the product with chemicals such as thinners, gasoline and alcohol.

2 Wipe down with a microfiber or soft cloth wrung out in clean water.

- Be sure the cloth is well wrung out with no water dripping, leaving the cloth damp.

3 Have the plastic parts dry naturally.



Questions and answers (Q&A)

Q Can someone with a medical condition or disease use this product?

A **They must consult with their physicians before using the product.**

Massage can aggravate or worsen muscle injuries, bone disease, spinal abnormalities, skin disease and kill ones with medical devices implanted in their body.

Q Is there a restriction body height and weight to use this chair?

A **The recommended min. Height is 4'9" with a max. height of 6'4". The max. weight capacity is 260 lbs.**

If the user is shorter or taller than the height range, they will not fit comfortably in the chair and may even cause injury. The maximum weight limit must be followed to avoid damaging the chair and also possibly seriously injuring yourself while using the device. The limits are in place for the user's safety.

For a taller person with knee bending when using the product:

Tilt the backrest and lower the Lower Leg/Foot massager to the down position, elongating the length from top to bottom.

For a short person difficult to touch the foot massage section:

Raise the backrest and raise the legrest to shorten the distance from the top to bottom.

Q Where is the serial number of the product?

A **It is located at behind the backrest at the back of the chair by the power cord.**



Q When I use the chair it makes noise .

A **It is part of the normal function of the chair.**

The chair is equipped with an air pump and multiple motors. The sounds are part of the chair when being operated.

Q How long should I use the massage chair each day?

A **20 minutes per day with no medical conditions.**

For the 1st week of using the chair, use only for 20 minutes at most assuming the user is in good medical condition. If there is any discomfort stop using and consult with your doctor. The first few days of using you may experience mild soreness. Be sure to monitor the pain levels and if the soreness does not diminish after the following day consult with your doctor before using again.

BE SURE TO DRINK PLENTY OF WATER AFTER EACH MASSAGE.

Troubleshooting

If an issue occurs, inspect and trouble shoot according to the corresponding method below.

If the problem is not resolved, contact the manufacturer for further instructions or service.

Fault	Cause and elimination method
<p>The massage wheels stop during use (The product beeps and all icons and buttons on the remote controller flicker and then go out.)</p>	<p><u>As a safety protocol the massage heads will stop if pressure/weight load has exceeded its limit.</u></p> <p>To avoid potentially over heating or damaging the massage mechanism the chair is designed to automatically shut off if over strained or over heated. The remote will flash a few times and then shut off as a safety measure. If this has occurred turn off the power switch from the back, allow for 30 sec. And power back on. If the weight capacity of 260 lbs is not exceeded, unplug from the outlet and notify the manufacturer.</p>
<p>The product cannot tilt, or the footrest cannot be raised or lowered (The product beeps, the running light on the remote controller go out and the product stops)</p>	<p><u>This product will stop upon any obstruction or a too large of a force preventing from operating.</u></p> <p>If all screen and buttons are flickering and the backrest or the footrest has stopped, turn off the power supply and turn back on 10 seconds. Be sure there are no obstructions in the way of the footrest or the backrest rolling mechanism.</p>
<p>The massage wheels cannot reach the shoulders or the neck</p>	<p>If your head is not properly placed against the backrest during the computer body scan, it may result in an incorrect reading, causing the rollers to start a lower position causing the massage to be inaccurate. If this occurs turn off the power from the remote and start over again to get a proper reading.</p>
<p>The left and right massage wheels have different heights (intensities)</p>	<p>This is a normal function of the massage mechanism as it programmed to massage alternating locations from the right side during certain intervals of the program.</p>
<p>The chair is not functioning (massaging).</p> <ul style="list-style-type: none"> ● Upper body (the neck to the waist) massage ● Lower leg/foot massage 	<ul style="list-style-type: none"> ● The power line is disconnected. ● The power switch is not turned on. ● If no program is selected after turning, the chair will pause and shut down. Turn off and restart.
<p>The roller heads are still warm after turning off the heat. Is the product is damaged.</p>	<ul style="list-style-type: none"> ● Because the roller heads heat up it will take some time for the residual heat to dissipate. ● If the massage heads are mildly warm, the rollers may be admitting heat created by the friction from the massage.
<p>The power line or the power plug is abnormally warm to hot.</p>	<p>To avoid accidents, contact an authorized service center.</p>

If above solution are not applicable ,kindly refer to “Product Warranty Card” and contact service Center.

Troubleshooting (Continued)

Expected sounds and feelings when using the massage chair.

You will hear or have the following feelings when using the product. These not defective indicators but a normal function of the chair.

- When chair extends or retracts you will hear gears moving an clicking.
- A rubbing sound will be mildly heard when the massage heads are activated.
- When the massage heads are tapping you may hear a mild clicking sound.
- Friction sounds will be experienced as the rollers are activated.
- As the rollers move up and down the motor produce a sound.
- As the rollers are activated you will hear spinning of belts rotating.
- Motor sounds will be experienced.
- As the massage heads are squeezing, a mild squeaking sound will heard.
- When sitting in the chair as the roller heads are tapping and rolling a mild squeaking sound may be produced from the joints.
- Common joints that may squeak would be from the side panels
- Friction sound between the massage wheels and the fabric.
- Motors will be heard from the pump when the airbags deflate.
- While the airbags are activated you will hear air valves alternating.
- When the legrest is moving, you will hear mild squeak and a motor operating.



If the sound is loud, it is also possible that the product has failed.

- In this case, have the product inspected and repaired by an authorized service center.

! Warning

- **Do not refit, disassemble or repair the product without permission.** Otherwise fires, abnormal movements or personal injuries may happen.

! Warning

- **In the case of any abnormality or fault, stop the product immediately and pull out the power plug to avoid fuming, fires and electric shocks.**
- <Abnormality and fault example>
- The product fails to work after the power switch is turned to the ON position;
- When the power cable is moved the chair will turn off and on.
- In use, the product gives off a burning smell or an abnormal sound;
The product is upholstery is deformed or abnormally hot.
If any of these symptoms occur, have the product inspected and repaired by an authorized service center immediately.

Specifications

Model		Hilux
Rate Voltage		110 -120V 60Hz
Power		195W
Working time		15min
Guide		L Shape 52.8"
4D Massage Roller	Forward distance	8 level Approx 3.9"
	Strength	5 level
	Speed	5 level
Airbag	Intensity	5 level
Angle Adjustment	Backrest	Approx 128° - 155° (Ground Angle)
	Footrest	Approx 9° - 75° (Wall Angle)
size	Upright	61.8"x31.9"x47.6"
	Reclined	76.8"x31.9"x41.7"
Extension of Footrest		Approx 7.1"
Dimensions of Packing (L*W*H)		BOX1: 52.4"x33.5"x49.6" BOX2: 23.2"x20.1"x21.7"
N.W./ G.W.		BOX1: 210.5/246.9 lbs BOX2: 48.5/55.1 lbs
Weight of Chair		Approx 244.6 lbs
Usage Condition		Environment temperature :32°F ~95°F
		Contrasting humidity :20-80RH
Storage Condition		Storage temperature :23°F ~95°F
		Storage humidity :20-80RH
Maximum body weight of user		260 lbs

FCC Radiation Exposure Statement

FCC Radiation Exposure Statement:

This equipment complies with FCC radiation exposure limits set forth for an uncontrolled environment. In order to avoid the possibility of exceeding the FCC radio frequency exposure limits, Human proximity to the antenna shall not be less than 20cm (8 inches) during normal operation.

FCC STATEMENT

1. This device complies with Part 15 of the FCC Rules. Operation is subject to the following two conditions:
 - (1) This device may not cause harmful interference, and
 - (2) This device must accept any interference received, including interference that may cause undesired operation.
2. Changes or modifications not expressly approved by the party responsible for compliance could void the user's authority to operate the equipment.

This equipment has been tested and found to comply with the limits for a Class B digital device, pursuant to part 15 of the FCC Rules. These limits are designed to provide reasonable protection against harmful interference in a residential installation. This equipment generates, uses and can radiate radio frequency energy and, if not installed and used in accordance with the instructions, may cause harmful interference to radio communications. However, there is no guarantee that interference will not occur in a particular installation. If this equipment does cause harmful interference to radio or television reception, which can be determined by turning the equipment off and on, the user is encouraged to try to correct the interference by one or more of the following measures:

- Reorient or relocate the receiving antenna.
- Increase the separation between the equipment and receiver.
- Connect the equipment into an outlet on a circuit different from that to which the receiver is connected.
- Consult the dealer or an experienced radio/ TV technician for help.

Industry Canada Notice

Industry Canada Notice

This device complies with Industry Canada licence-exempt RSS standard(s).

1. Operation is subject to the following two conditions:

- (1) this device may not cause interference, and
- (2) this device must accept any interference, including interference that may cause undesired operation of the device.

2. Changes or modifications not expressly approved by the party responsible for compliance could void the user's authority to operate the equipment.

Avis d'Industrie Canada

Le présent appareil est conforme aux CNR d'Industrie Canada applicables aux appareils radio exempts de licence.

1. L'exploitation est autorisée aux deux conditions suivantes :

- (1) l'appareil ne doit pas produire de brouillage, et
- (2) l'utilisateur de l'appareil doit accepter tout brouillage radioélectrique subi, même si le brouillage est susceptible d'en compromettre le fonctionnement.

2. Cet appareil numérique ne dépasse pas les Rèlements sur l'interférence radio par un appareil numérique de classe B stipulées dans les Règlement sur l'interférence radio d'industrie Canada.