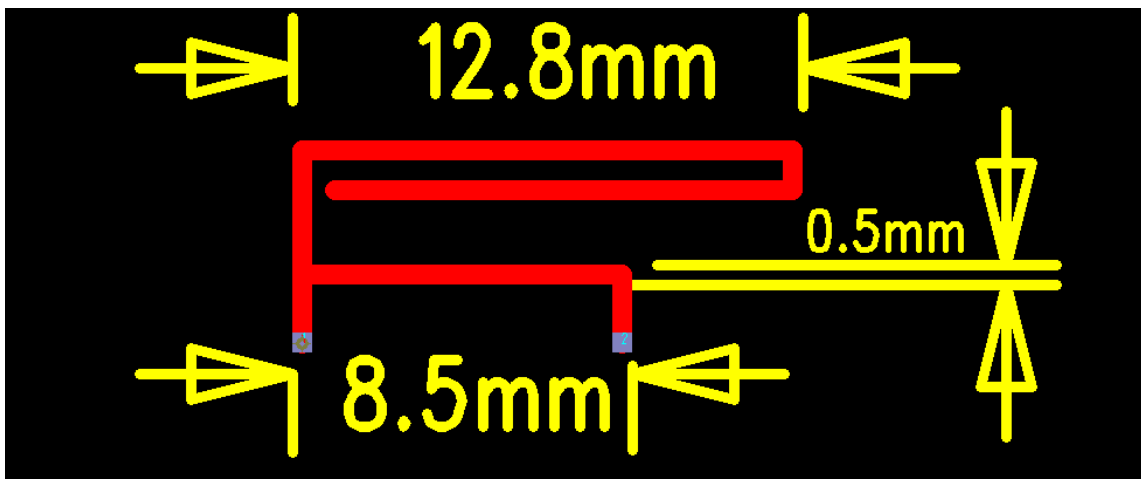


# Product specification

ITEM	Antenna module on the system board
Frequenc Range	2400 ~ 2500MHz
Efficiency (dB)	39%
Gain (dBi)	-0.58dBi
Input Impedence(ohm)	50
Polarization Type	Vertical & Horizontal

## Antenna Layout & module on the system board



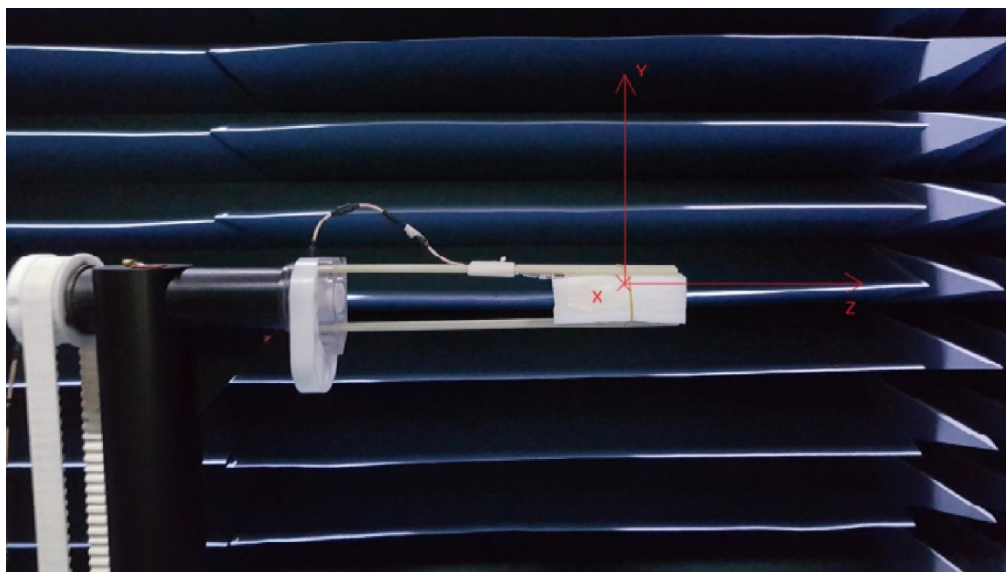
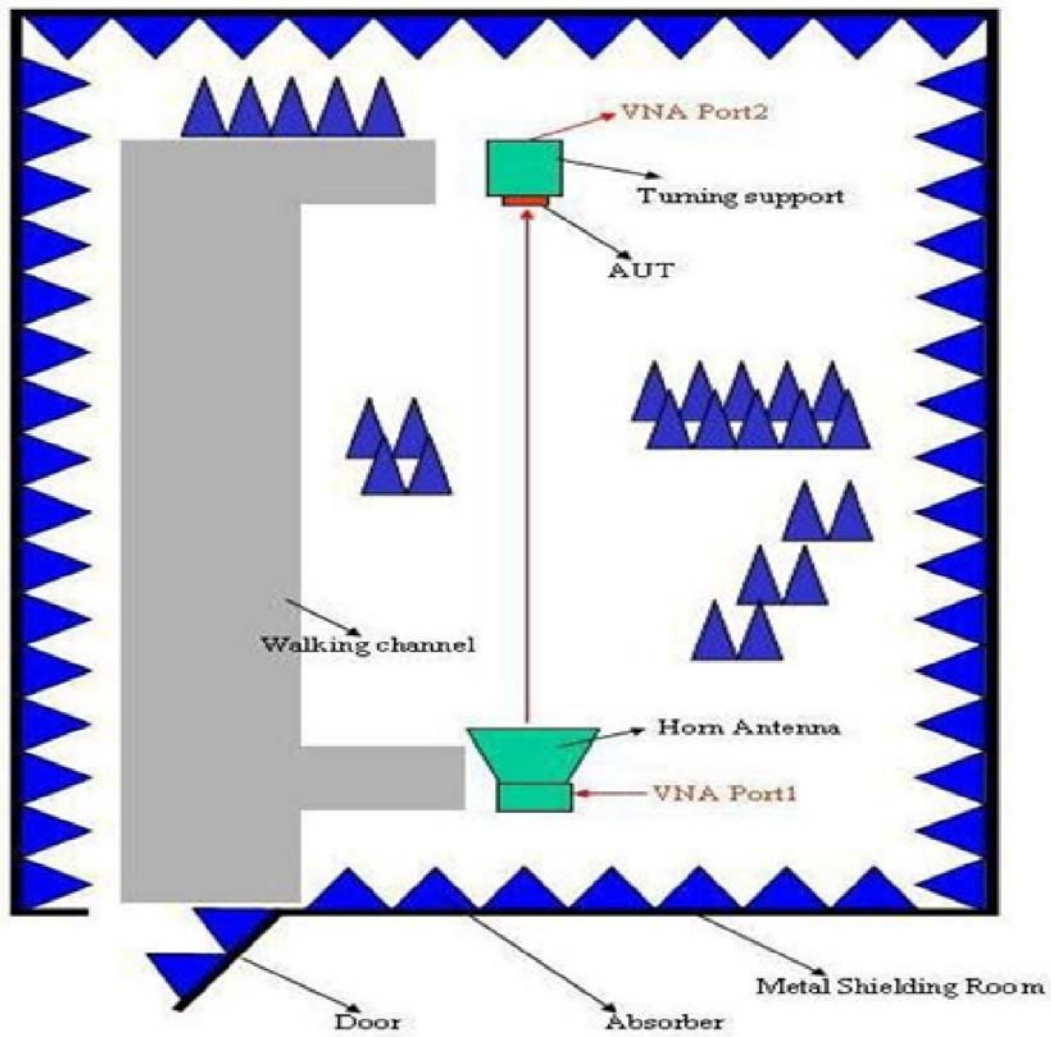
## Antenna Gain

Gain&Efficiency				
增益和效率				
frequency	gain	mingain	efficiency	efficiency
频率(MHz)	增益(dBi)	最小增益(dBi)	效率(dBi)	效率(%)
2400	-0.79	-18.23	-4.41	36.24
2410	-0.7	-17.58	-4.24	37.69
2420	-0.58	-17.95	-4.08	39.12
2430	-0.75	-18.48	-4.25	37.62
2440	-1.1	-17.68	-4.41	36.23
2450	-1.07	-16.82	-4.35	36.74
2460	-1.53	-16.57	-4.75	33.52
2470	-1.41	-17.09	-4.65	34.31
2480	-1.71	-18.12	-5.05	31.26
2490	-1.92	-18.51	-5.22	30.09
2500	-2.38	-20.09	-5.78	26.40

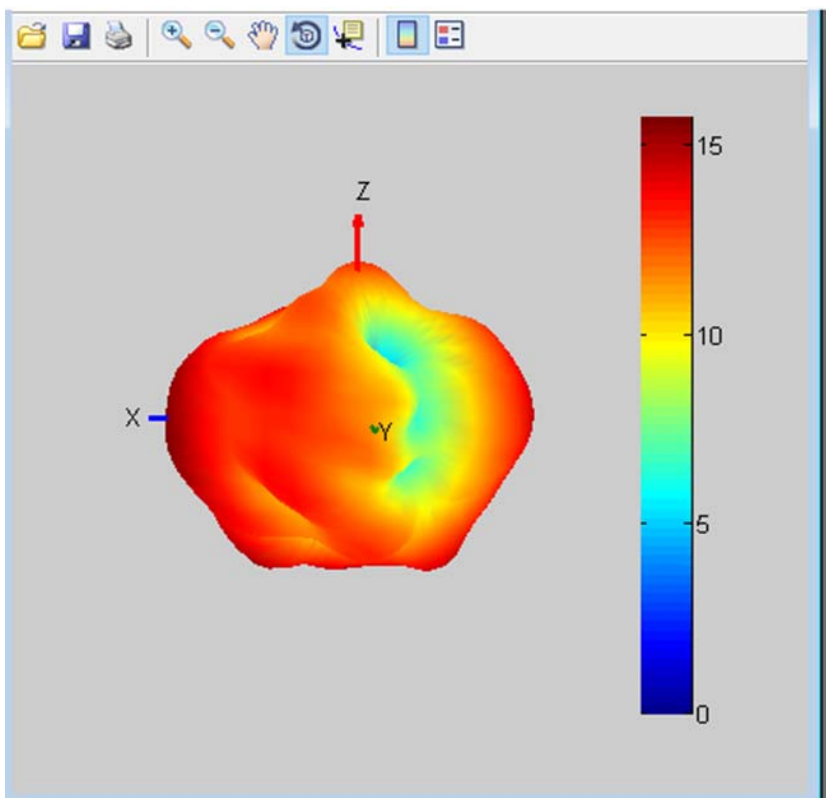
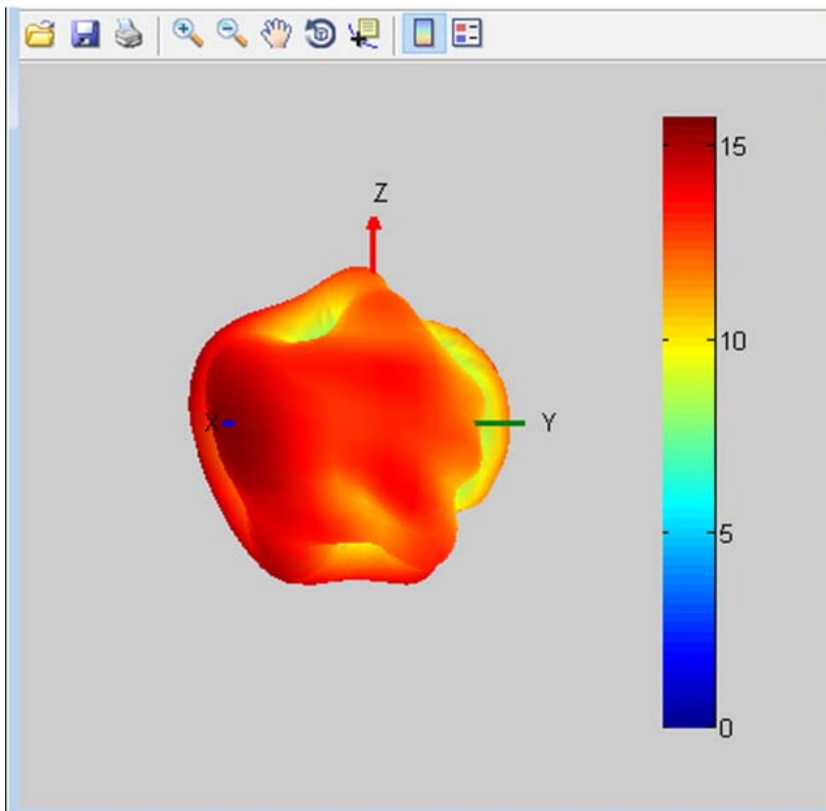
## Active Test (free space)

Result	2402	2441	2480
TRP( dbm)	2.69dbm	2.96dbm	2.48
TIS( dbm)	-89.75	-89.98	-89.66

## The Environment of Antenna Radiation Pattern

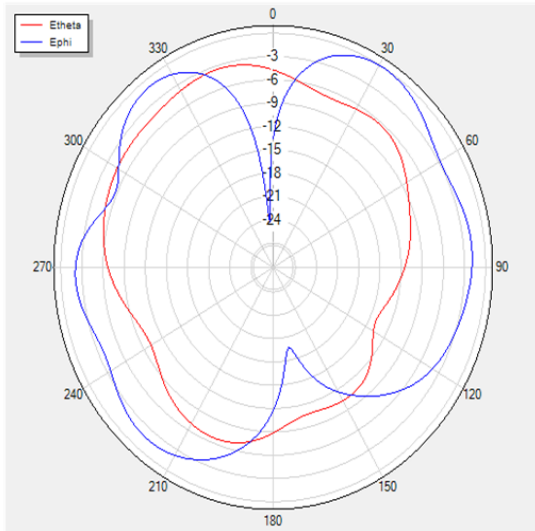


### 3D radiation pattern diagram

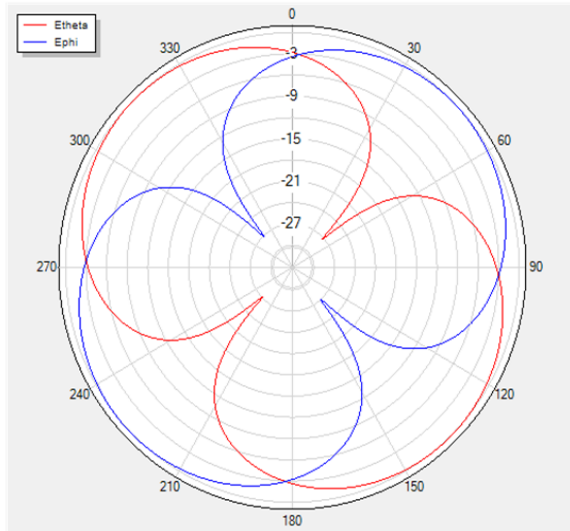


# PolarGraphs

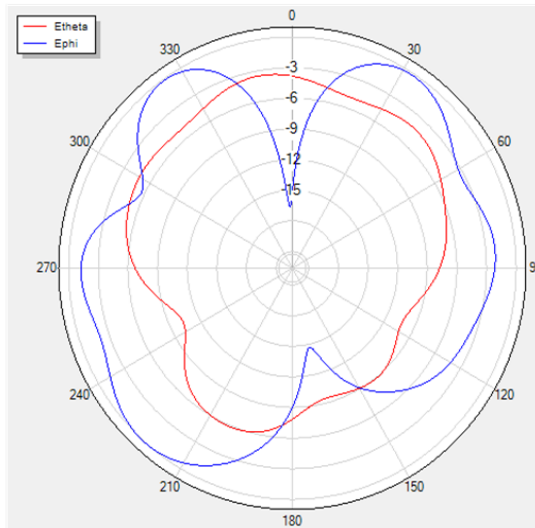
## H Theta=90 freq=2400MHz



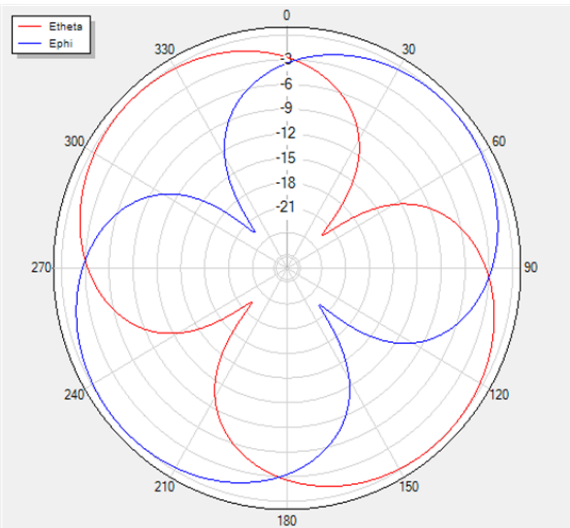
## H Theta=0 freq=2400MHz



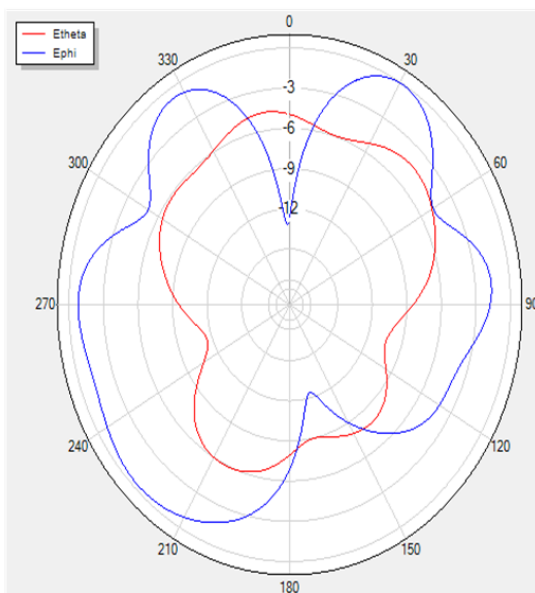
## H Theta=90 freq=2440MHz



## H Theta=0 freq=2440MHz



## H Theta=90 freq=2480MHz



## H Theta=0 freq=2480MHz

