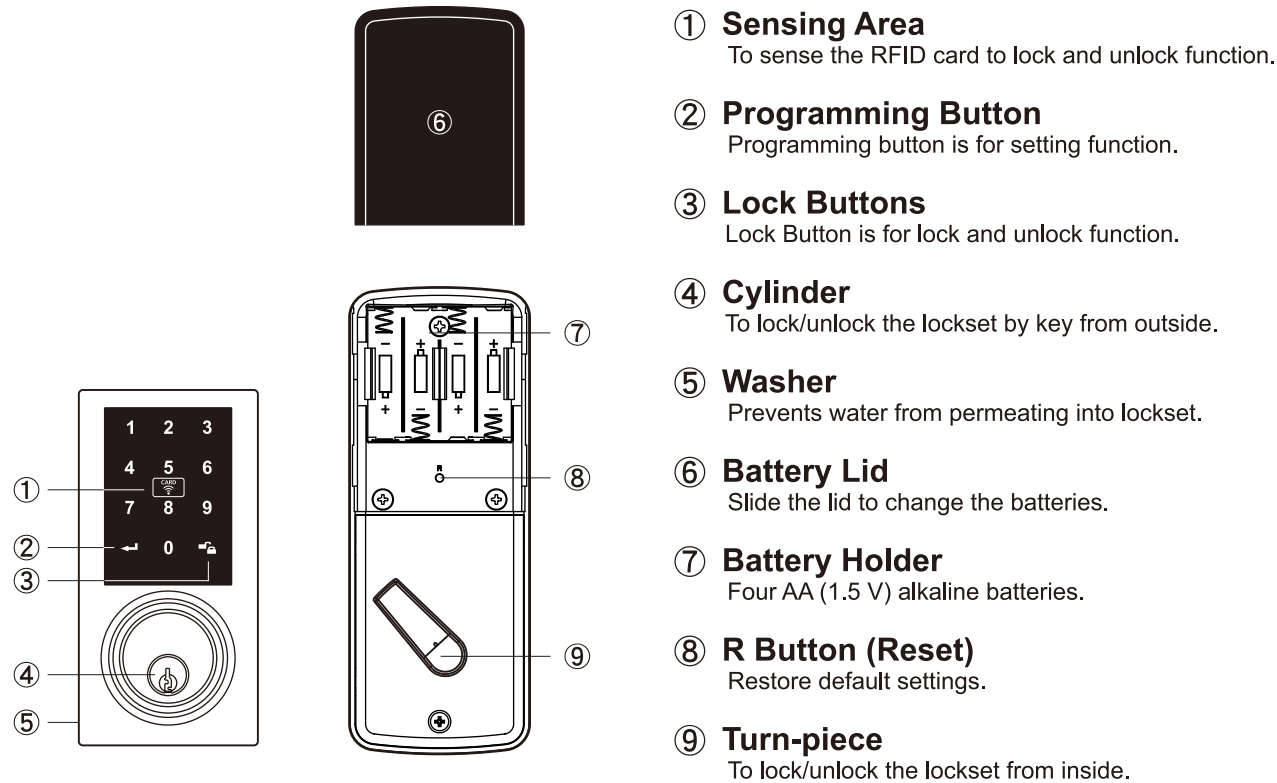


# Touchpad Proximity Electronic Deadbolt

## USER GUIDE

**Do not use any chemical liquid or lubricating oil with additives to clean the lock body. It will damage the surface or even mainboard.**

### OPERATIONAL INTERFACE



- ① **Sensing Area**  
To sense the RFID card to lock and unlock function.
- ② **Programming Button**  
Programming button is for setting function.
- ③ **Lock Buttons**  
Lock Button is for lock and unlock function.
- ④ **Cylinder**  
To lock/unlock the lockset by key from outside.
- ⑤ **Washer**  
Prevents water from permeating into lockset.
- ⑥ **Battery Lid**  
Slide the lid to change the batteries.
- ⑦ **Battery Holder**  
Four AA (1.5 V) alkaline batteries.
- ⑧ **R Button (Reset)**  
Restore default settings.
- ⑨ **Turn-piece**  
To lock/unlock the lockset from inside.

### OPERATING INSTRUCTIONS

**Keep the door open while programming to avoid being locked out accidentally.**

The lock contains one factory-preset user code but can be programmed to store up to a total of thirty additional unique user codes. Codes can be added and deleted at any time. For first-time programming, use factory default programming code. It's recommended to change the default programming code and default user code right after you install the lock. Every programming step should be done within 6 seconds.

#### Operation Indicator Sounds and Lights

Sounds	Lights	Meaning
1 Beep		Successful Operation
2 Long Beeps		Successful Programming
3 Beeps		Operation Error
5 Beeps		Code Input Error; System Shuts Down
10 Rapid Beeps		Low Battery Power
3 Long Beeps		Default Setting Restored
	Lock button flashes slowly	In Programming Mode

### TROUBLE SHOOTING

Problem	Possible cause	Corrective action
After installing the lockset and batteries, the door can't be locked and three short beeps are emitted when you press the lock button.	The door-handing identification process isn't yet complete.	Refer to door handing identification process.
You've installed the lockset and batteries, but you still get no response when you press any button.	Batteries were installed incorrectly and cable connect incorrectly.	Check to see if the battery polarities have been reversed or if the battery is dead. If so, re-install or change the battery. If not, please check to see if the cable is properly connected.
When you are in the door-handing identifying process, you get the red light flashing three times, and three short beeps.	Wrong door-handing or change of the door-handing in the memory.	Press the R button to restore the system to factory default setting and re-execute door-handing identifying process
Although you succeeded in the first execution of the door-handing identifying process, the latch still doesn't work. (i.e. You can feel the motor attempting to run.)	Low battery.	Replace with new alkaline batteries.
The door can be locked normally, but when you try to unlock it, you hear three short beeps and the lock won't unlock when you enter the user code and press the lock button.	The functioning of the micro-switch is abnormal.	Call our customer service department.
While the door is locked, you hear the latch bolt coming out when you press the to lock the door; however, three short beeps are emitted. Conversely, while the door is open, no beeps are emitted when locking the latch bolt.	(1) The depth of the latch bolt hole is insufficient. (2) The latch bolt is not aimed at the opening of the strike.	(1) Dig the latch bolt hole for the strike deeper. The minimum depth is 1" (2.5 cm). (2) Adjust the strike to the appropriate position.

### WARRANTY

The manufacturer warrants the product to be free from defects in material and workmanship for a period of 12 months from the original date of purchase. If you discover a defect in the product covered by this warranty, we will repair or replace the item at our option using new or refurbished components.

#### EXCLUSIONS

This warranty covers defects in manufacturing discovered while using the products as recommended by the manufacturer rather than occurred by the act of God, and damages caused by misuse, abuse, and unauthorized modification.

#### LIMITED LIABILITY

The manufacturer will not be held liable for incidental or consequential losses or damages from any act of God.

### REGULATORY COMPLIANCE

This product complies with standards established by the following regulatory bodies:  
• Federal Communications Commission (FCC) • Industry Canada

#### FCC

This device complies with Part 15 of the FCC Rules. Operation is subject to the following two conditions:  
( 1 ) this device may not cause harmful interference, and ( 2 ) this device must accept any interference received, including interference that may cause undesired operation. This equipment has been tested and found to comply with the limits for a Class B digital device, pursuant to Part 15 of the FCC Rules. These limits are designed to provide reasonable protection against harmful interference in a residential installation. This equipment generates, uses, and can radiate radio frequency energy and, if not installed and used in accordance with the instructions, may cause harmful interference to radio communications. However, there is no guarantee that interference will not occur in a particular installation. If this equipment does cause harmful interference to radio or television reception, which can be determined by turning the equipment off and on, the user is encouraged to try to correct the interference by one or more of the following measures:  
• Reorient or relocate the receiving antenna.  
• Increase the separation between the equipment and receiver.  
• Connect the equipment into an outlet on a circuit different from that to which the receiver is connected.  
• Consult the dealer or an experienced radio/TV technician for help.

#### IMPORTANT !

Changes or modifications not expressly approved by the manufacturer could void the user' authority to operate the equipment.

## SETTING

Default programming code (PC): 0-0-0-0    Default user code (UC): 1-2-3-4

Your new programming code (PC) \_\_\_\_\_

Your new user code (UC) \_\_\_\_\_

The same programming code and user code cannot be accepted.

The lock will cease operation if unauthorized codes are entered over 5 times.  
The system will unfreeze after 45 seconds.



DO THIS FIRST

### 1. Door Handing Identification Process

The lock needs to learn if your door is a right-handed or left-handed.

Enter PC → ← → 0 → ←

### 2. Change Programming Code

Enter PC → ← → 4 → ← → Enter New PC → ←

### 3. Add New User Code

Enter PC → ← → 1 → ← → Enter New UC → ←

Note: Up to 30 sets of user codes can be saved. User codes should be 4–10 digits in length.

### 4. Delete an Existing User Code

Enter PC → ← → 2 → ← → Enter the UC you want to delete → ←

### 5. Delete All User Codes at Once

Enter PC → ← → 3 → ←

Note: Auto-locking and keypad locking functions will be invalid when user codes are deleted.  
The lock can only be operated by key during that time.

### 6. Toggle Auto-Lock On/Off

Enter PC → ← → 5 → ←

Note: The preset delay-time is 30 seconds, you can change the time by following instructions #7.  
Repeat the steps in #6 to cancel the auto-locking function.

### 7. Set Auto-Lock Time Delay

Enter PC → ← → 6 → ← → Enter Seconds (10~99) → ←

Note: 10–99 seconds delay-time available.

### 8. Enable/Disable All User Codes

Enter PC → ← → 7 → ←

Note: Auto-locking and keypad locking functions will be invalid when user codes are disabled. The lock can only be operated by key during the time. Repeat the steps to enable the user codes again.

### 9. Create a One-Time User Code 4–10 Digits Long

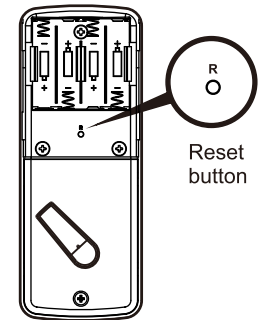
Enter PC → ← → 8 → ← → Enter One Time Code → ←

Note: The one-time user code will automatically cancel after it is used one time.

### 10. Restore Default Settings

Press " R "

Note: Press the button for more than 5 seconds; the programming is reset back to the original factory codes once you hear 3 long beeps.  
After restoring default settings, you must run the door handing identifying process (#1) again before programming any other functions.



## RFID CARD REGISTRATION

### 1. Registering the cards

Enter PC → ← → 1 3 → ← → 0 1 → ←

Instruction: After the setup is complete, place the card close to the sensor (when it beeps once, the registration is complete).  
The number "01" above represents the order of the card.  
If the card to be registered is the third card, enter the number "03", and so on.  
A maximum of 99 cards can be registered. They can be registered individually or consecutively.

Note: The master password must be entered for the registration.  
The cards may be registered individually or consecutively with a maximum of 99 cards.  
If registered with over 20 cards/tags, you might experience delayed response.

### 2. Voiding designated cards

Enter PC → ← → 1 4 → ← → 0 1 → ←

Instruction: The number "01" above represents the order of the card. To void the cards, please enter the order of the card.  
For example, if the third card is to be voided, enter "03", and so on. The cards may be voided individually or consecutively.

Note: The master password is required to void the card.  
Voided cards may be reused again after registration. The cards may be voided individually or consecutively.

### 3. Voiding all cards at the same time

Enter PC → ← → 1 5 → ←

Instruction: When it beeps twice, all cards have been voided.

Note: The master password is required to void the cards. All cards may be voided at the same time.  
The voided cards may be reuse again after registration.