

Appendix B: Photographs

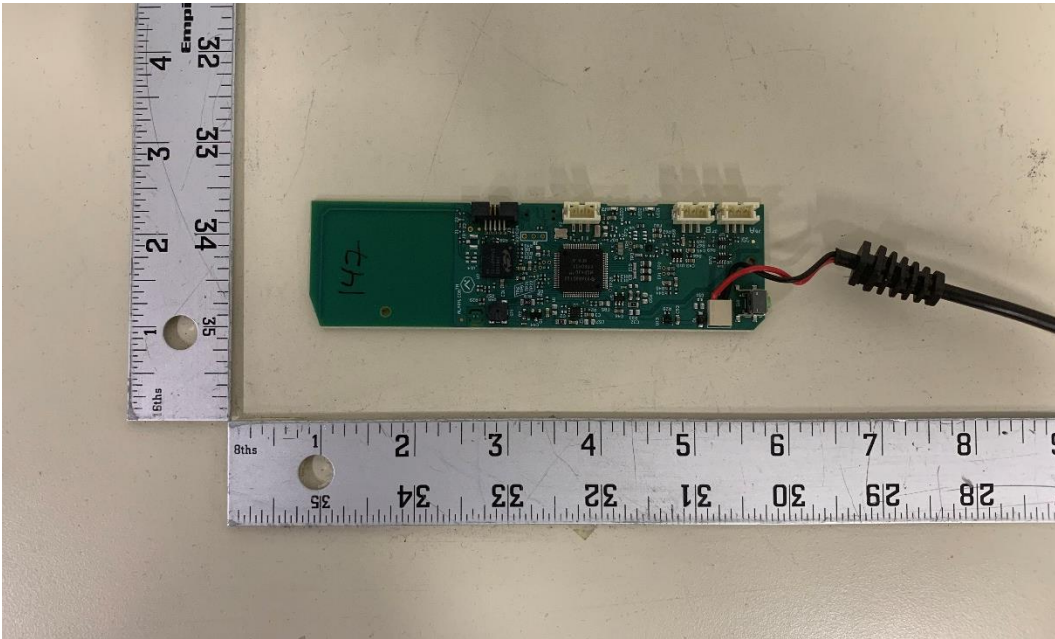


Figure B1. Front view of the DUT

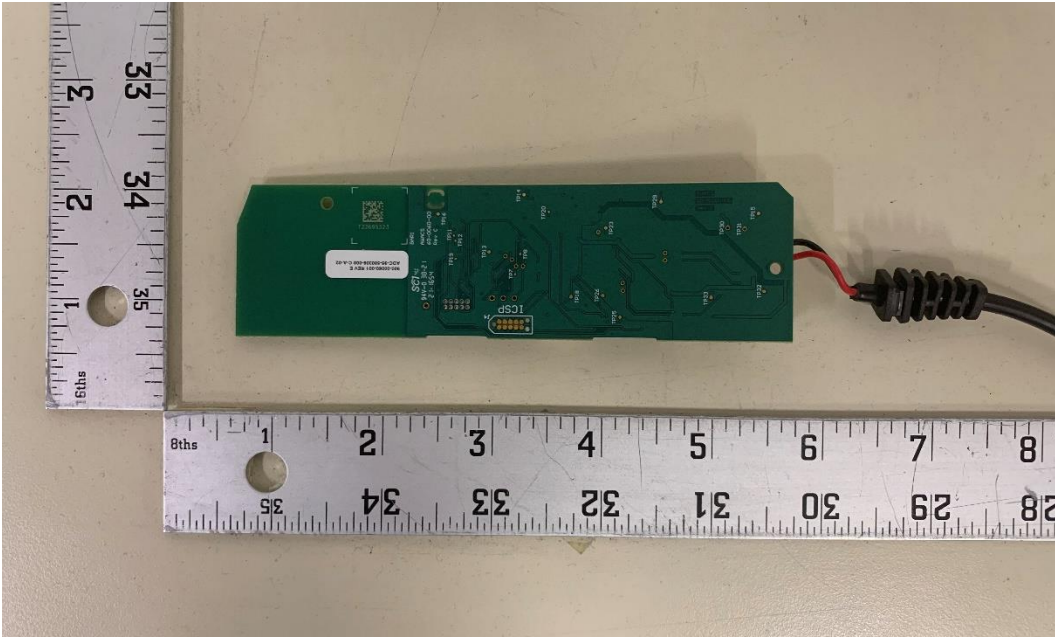


Figure B2. Rear view of the DUT



Figure B3. View of the DUT(inside the host) and Accessories

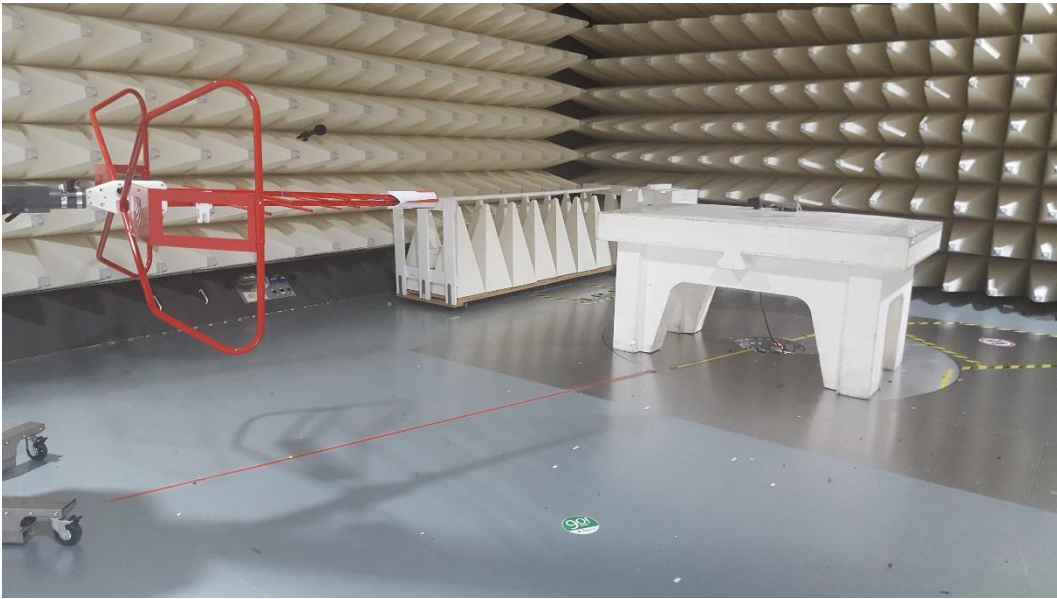


Figure B4. Radiated emission Setup – Low Range 30 to 1000 MHz

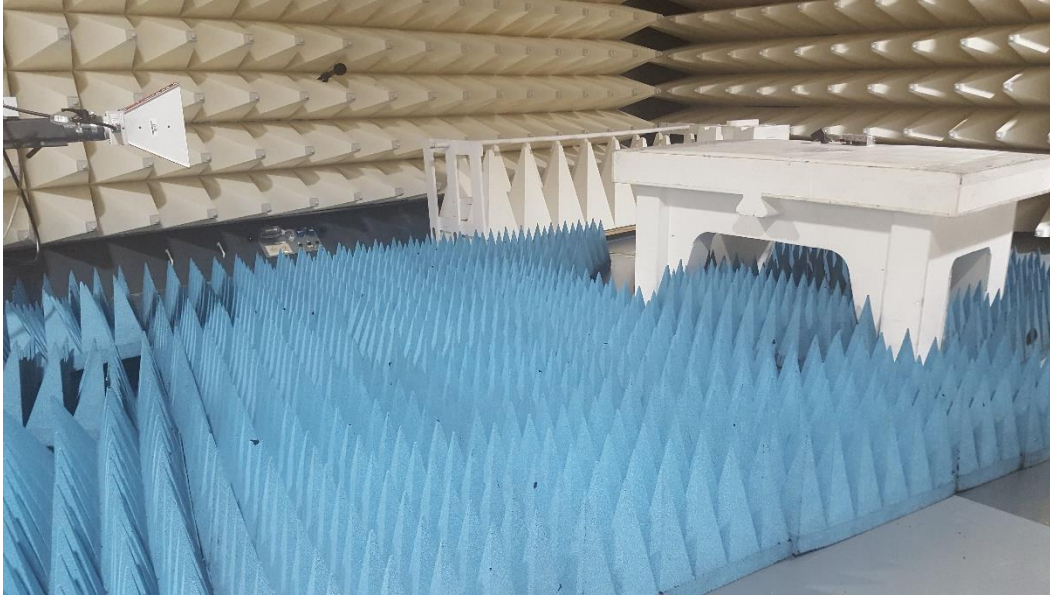


Figure B5. Radiated emission Setup – High Range 1 to 18 GHz