



STC Test Report



Date: 2014-02-18

Page 1 of 41

No.: DM114112

Applicant (DGO006): Audio Partnership Plc.
Gallery Court, Hankey Place, London, SE1 4BB United Kingdom

Manufacturer: Audio Partnership Plc.
Gallery Court, Hankey Place, London, SE1 4BB United Kingdom

Description of Sample(s): Submitted sample(s) said to be
Product: Portable Wireless Music System
Brand Name: Cambridge Audio
Model Number: Go Radio
FCC ID: YKBMGFM-011

Date Sample(s) Received: 2014-01-17

Date Tested: 2014-01-20 to 2014-02-17

Investigation Requested: Perform ElectroMagnetic Interference measurement in accordance with FCC 47CFR [Codes of Federal Regulations] Part 15: 2012. FCC KDB Publication 558074 D01 DTS Meas Guidance v02 and ANSI C63.4:2009 for FCC Certification.

Conclusion(s): The submitted product COMPLIED with the requirements of Federal Communications Commission [FCC] Rules and Regulations Part 15. The tests were performed in accordance with the standards described above and on Section 2.2 in this Test Report.

Remark(s): Bluetooth 4.0 (GFSK)


LONG Yun Jian, Along
Authorized Signatory
ElectroMagnetic Compatibility Department
For and on behalf of
STC (Dongguan) Company Limited



The Hong Kong Standards and Testing Centre Ltd.

10 Dai Wang Street, Taipo Industrial Estate, N.T., Hong Kong

Tel: (852) 2666 1888 Fax: (852) 2664 4353 Homepage: www.hkstc.org E-mail: hkstc@hkstc.org



STC Test Report

Date: 2014-02-18

Page 2 of 41

No.: DM114112

CONTENT:

Cover

Page 1 of 41

Content

Page 2 of 41

1.0 General Details

1.1 Test Laboratory

Page 3 of 41

1.2 Equipment Under Test [EUT]
Description of EUT operation

Page 3 of 41

1.3 Date of Order

Page 3 of 41

1.4 Submitted Sample(s)

Page 4 of 41

1.5 Test Duration

Page 4 of 41

1.6 Country of Origin

Page 4 of 41

1.7 RF Module Details

Page 4 of 41

1.8 Antenna Details

Page 4 of 41

1.9 Channel List

Page 4 of 41

2.0 Technical Details

2.1 Investigations Requested

Page 5 of 41

2.2 Test Standards and Results Summary

Page 5 of 41

3.0 Test Results

3.1 Emission

Page 6-34 of 41

Appendix A

List of Measurement Equipment

Page 35 of 41

Appendix B

Ancillary Equipment

Page 35 of 41

Appendix C

Photographs of EUT

Page 36 - 41 of 41

The Hong Kong Standards and Testing Centre Ltd.

10 Dai Wang Street, Taipo Industrial Estate, N.T., Hong Kong

Tel: (852) 2666 1888 Fax: (852) 2664 4353 Homepage www.hkstc.org E-mail: hkstc@hkstc.org



STC Test Report

Date: 2014-02-18

Page 3 of 41

No.: DM114112

1.0 General Details

1.1 Test Laboratory

STC (Dongguan) Company Limited
EMC Laboratory
68 Fumin Nan Road, Dalang, Dongguan, Guangdong, China

Telephone: (86 769) 81119888

Fax: (86 769) 81116222

1.2 Equipment Under Test [EUT]

Description of Sample(s)

Product: Portable Wireless Music System

Manufacturer: Audio Partnership Plc.

Brand Name: Cambridge Audio

Model Number: Go Radio

Rating: 18Vd.c. with Jack

The AC/DC adaptor was provided by the applicant with following details:

Brand name: N/A; Model no.: OH-1028E1801500U; Input: 100-240Va.c. 50/60Hz
800mA MAX ; Output: 18Vd.c. 1.5A.

1.2.1 Description of EUT Operation

The Equipment Under Test (EUT) is a Portable Wireless Music System of Audio Partnership Plc., it is Audio System, modulation by IC; and type is frequency hopping speed spectrum Modulation.

1.3 Date of Order

2014-01-17

1.4 Submitted Sample(s):

1 Sample

1.5 Test Duration

2014-01-20 to 2014-02-17

1.6 Country of Origin

China

The Hong Kong Standards and Testing Centre Ltd.

10 Dai Wang Street, Taipo Industrial Estate, N.T., Hong Kong

Tel: (852) 2666 1888 Fax: (852) 2664 4353 Homepage www.hkstc.org E-mail: hkstc@hkstc.org



STC Test Report

Date: 2014-02-18

Page 4 of 41

No.: DM114112

1.7 RF Module Details

Module Model Number: GWB8C
Module FCC ID: N/A
Module Transmission Type: Bluetooth 4.0
Modulation: GFSK
Data Rates: 1Mbps
Frequency Range: 2400-2483.5MHz
Carrier Frequencies: 2402MHz – 2480MHz

Module Specification (specification provided by manufacturer)

1.8 Antenna Details

Antenna Type: Meander line antenna
Antenna Length: 13.7mm
Antenna Gain: 2.0dBi

1.9 Channel List

Channel	Frequency (MHz)	Channel	Frequency (MHz)
0	2402	20	2442
1	2404	21	2444
2	2406	22	2446
3	2408	23	2448
4	2410	24	2450
5	2412	25	2452
6	2414	26	2454
7	2416	27	2456
8	2418	28	2458
9	2420	29	2460
10	2422	30	2462
11	2424	31	2464
12	2426	32	2466
13	2428	33	2468
14	2430	34	2470
15	2432	35	2472
16	2434	36	2474
17	2436	37	2476
18	2438	38	2478
19	2440	39	2480

The Hong Kong Standards and Testing Centre Ltd.

10 Dai Wang Street, Taipo Industrial Estate, N.T., Hong Kong

Tel: (852) 2666 1888 Fax: (852) 2664 4353 Homepage www.hkstc.org E-mail: hkstc@hkstc.org

This report shall not be reproduced unless with prior written approval from The Hong Kong Standards and Testing Centre Ltd
For Conditions of Issuance of this test report, please refer to the overleaf or Homepage



STC Test Report

Date: 2014-02-18

Page 5 of 41

No.: DM114112

2.0 Technical Details

2.1 Investigations Requested

Perform Electromagnetic Interference measurements in accordance with FCC 47CFR [Codes of Federal Regulations] Part 15: 2012 Regulations, FCC KDB Publication 558074 D01 DTS Meas Guidance v02 and ANSI C63.4:2009 for FCC Certification.

2.2 Test Standards and Results Summary Tables

EMISSION Results Summary						
Test Condition	Test Requirement	Test Method	Class / Severity	Test Result		
				Pass	Fail	N/A
Maximum Peak Output Power	FCC 47CFR 15.247(b)(3)	FCC KDB Publication 558074 D01 DTS Meas Guidance v02	N/A	<input checked="" type="checkbox"/>	<input type="checkbox"/>	<input type="checkbox"/>
Radiated Spurious Emissions	FCC 47CFR 15.209	ANSI C63.4:2009	N/A	<input checked="" type="checkbox"/>	<input type="checkbox"/>	<input type="checkbox"/>
AC Mains Conducted Emissions	FCC 47CFR 15.207	ANSI C63.4:2009	N/A	<input checked="" type="checkbox"/>	<input type="checkbox"/>	<input type="checkbox"/>
Power Spectral Density	FCC 47CFR 15.247(e)	FCC KDB Publication 558074 D01 DTS Meas Guidance v02	N/A	<input checked="" type="checkbox"/>	<input type="checkbox"/>	<input type="checkbox"/>
6dB Bandwidth	FCC 47CFR 15.247(a)(2)	FCC KDB Publication 558074 D01 DTS Meas Guidance v02	N/A	<input checked="" type="checkbox"/>	<input type="checkbox"/>	<input type="checkbox"/>
Band Edge Emissions (Radiated)	FCC 47CFR 15.247(d)	FCC KDB Publication 558074 D01 DTS Meas Guidance v02	N/A	<input checked="" type="checkbox"/>	<input type="checkbox"/>	<input type="checkbox"/>
Antenna requirement	FCC 47CFR 15.203	N/A	N/A	<input checked="" type="checkbox"/>	<input type="checkbox"/>	<input type="checkbox"/>
RF Exposure	FCC 47CFR 15.247(i)	N/A	N/A	<input checked="" type="checkbox"/>	<input type="checkbox"/>	<input type="checkbox"/>

Note: N/A - Not Applicable

The Hong Kong Standards and Testing Centre Ltd.

10 Dai Wang Street, Taipo Industrial Estate, N.T., Hong Kong

Tel: (852) 2666 1888 Fax: (852) 2664 4353 Homepage www.hkstc.org E-mail: hkstc@hkstc.org

This report shall not be reproduced unless with prior written approval from The Hong Kong Standards and Testing Centre Ltd
For Conditions of Issuance of this test report, please refer to the overleaf or Homepage



STC Test Report

Date: 2014-02-18

Page 6 of 41

No.: DM114112

3.0 Test Results

3.1 Emission

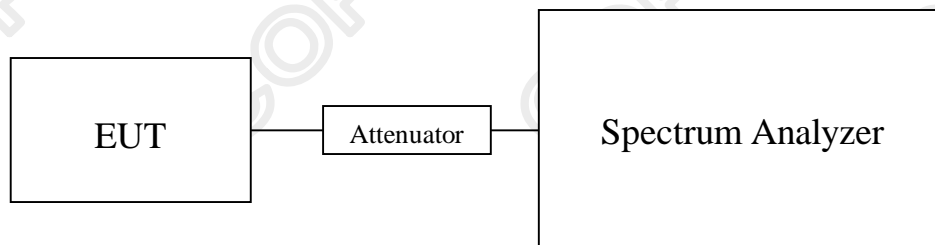
3.1.1 Maximum Peak Output Power

Test Requirement: FCC 47CFR 15.247(b)(3)
Test Method: FCC KDB Publication 558074 D01 DTS Meas Guidance v02
Test Date: 2014-01-23
Mode of Operation: Bluetooth 4.0 Tx mode

Test Method:

The RF output of the EUT was connected to the spectrum analyzer. All the attenuation or cable loss will be added to the measured maximum output power. The results are recorded in mW.

Test Setup:



The Hong Kong Standards and Testing Centre Ltd.

10 Dai Wang Street, Taipo Industrial Estate, N.T., Hong Kong
Tel: (852) 2666 1888 Fax: (852) 2664 4353 Homepage www.hkstc.org E-mail: hkstc@hkstc.org

This report shall not be reproduced unless with prior written approval from The Hong Kong Standards and Testing Centre Ltd
For Conditions of Issuance of this test report, please refer to the overleaf or Homepage



STC Test Report

Date: 2014-02-18

Page 7 of 41

No.: DM114112

Limits for Peak Output Power of Fundamental & Harmonics Emissions [FCC 47CFR 15.247]:

For Digital Transmission systems in 2400-2483.5 MHz Band: 1 Watt (30dBm)

Results of BT4.0 Tx Mode, (2402MHz to 2480MHz) : Pass (TX Unit) (GFSK)		
Maximum conducted output power		
Channel	Frequency(MHz)	Output Power(Watt)
0	2402	0.00146
19	2441	0.00163
39	2480	0.00179

Calculated measurement uncertainty : 30MHz to 1GHz 1.7dB
1GHz to 26GHz 1.7dB

The Hong Kong Standards and Testing Centre Ltd.

10 Dai Wang Street, Taipo Industrial Estate, N.T., Hong Kong
Tel: (852) 2666 1888 Fax: (852) 2664 4353 Homepage www.hkstc.org E-mail: hkstc@hkstc.org

This report shall not be reproduced unless with prior written approval from The Hong Kong Standards and Testing Centre Ltd
For Conditions of Issuance of this test report, please refer to the overleaf or Homepage



STC Test Report

Date: 2014-02-18

Page 8 of 41

No.: DM114112

3.1.2 Radiated Emissions

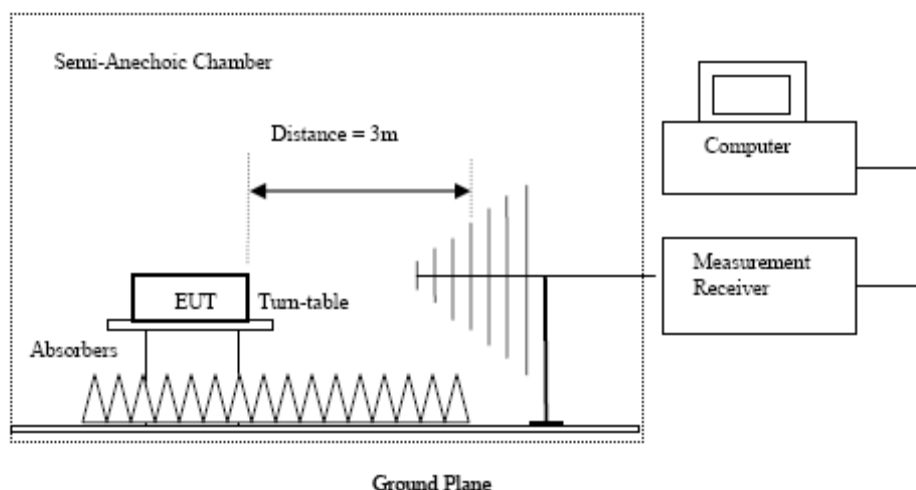
Test Requirement: FCC 47CFR 15.209
Test Method: ANSI C63.4:2009
Test Date: 2014-02-17
Mode of Operation: Bluetooth 4.0 Tx mode

Test Method:

The sample was placed 0.8m above the ground plane of semi-anechoic Chamber*. Measurements in both horizontal and vertical polarities were performed. During the test, each emission was maximized by: having the EUT continuously working, investigated all operating modes, rotated about all 3 axis (X, Y & Z) and considered typical configuration to obtain worst position, manipulating interconnecting cables, rotating turntable, varying antenna height from 1m to 4m in both horizontal and vertical polarizations. The emissions worst-case are shown in Test Results of the following pages.

* Semi-anechoic chamber located on the G/F of "STC (Dongguan) Company Limited" with a metal ground plane filed with the FCC pursuant to section 2.948 of the FCC rules, with Registration Number: 629686.

Test Setup:



- Absorbers placed on top of the ground plane are for measurements above 1000MHz only.
- Measurements between 30MHz to 1000MHz made with Bi-log antennas, above 1000MHz horn antennas are used, 9kHz to 30MHz loop antennas are used.

The Hong Kong Standards and Testing Centre Ltd.

10 Dai Wang Street, Taipo Industrial Estate, N.T., Hong Kong

Tel: (852) 2666 1888 Fax: (852) 2664 4353 Homepage www.hkstc.org E-mail: hkstc@hkstc.org



STC Test Report

Date: 2014-02-18

Page 9 of 41

No.: DM114112

Limits for Radiated Emissions [FCC 47 CFR 15.247 Class B]:

Frequency Range [MHz]	Quasi-Peak Limits [μ V/m]
0.009-0.490	2400/F (kHz)
0.490-1.705	24000/F (kHz)
1.705-30	30
30-88	100
88-216	150
216-960	200
Above960	500

The emission limits shown in the above table are based on measurement employing a CISPR quasi-peak detector and above 1000MHz are based on measurements employing an average detector.

Result of Bluetooth Communication mode (GFSK) (9kHz – 30MHz): Pass

The Low Frequency, which started from 9KHz to 30MHz, was Pre-scan and the result which was more than 20dB lower than the Limit line.

Result of Tx mode (2402.0 MHz) (GFSK) (Above 1GHz): Pass

Field Strength of Spurious Emissions						
Peak Value						
Frequency	Measured	Correction	Field	Limit	Margin	E-Field
MHz	Level @ 3m	Factor	Strength	@ 3m	dB μ V/m	Polarity
	dB μ V	dB/m	dB μ V/m	dB μ V/m		
4804.0	14.8	41.5	56.3	74.0	17.7	Vertical
4804.0	11.1	42.4	53.5	74.0	20.5	Horizontal
7206.0	9.9	45.1	55.0	74.0	19.0	Vertical
7206.0	8.9	46.2	55.1	74.0	18.9	Horizontal
9608.0	7.4	48.0	55.4	74.0	18.6	Vertical
9608.0	6.5	48.8	55.3	74.0	18.7	Horizontal
12010.0	3.6	51.5	55.1	74.0	18.9	Vertical
12010.0	3.8	52.4	56.2	74.0	17.8	Horizontal

The Hong Kong Standards and Testing Centre Ltd.

10 Dai Wang Street, Taipo Industrial Estate, N.T., Hong Kong

Tel: (852) 2666 1888 Fax: (852) 2664 4353 Homepage www.hkstc.org E-mail: hkstc@hkstc.org

This report shall not be reproduced unless with prior written approval from The Hong Kong Standards and Testing Centre Ltd
For Conditions of Issuance of this test report, please refer to the overleaf or Homepage



STC Test Report

Date: 2014-02-18

Page 10 of 41

No.: DM114112

Field Strength of Spurious Emissions						
Average Value						
Frequency	Measured	Correction	Field	Limit	Margin	E-Field
	Level @ 3m	Factor	Strength	@ 3m		Polarity
MHz	dB μ V	dB/m	dB μ V/m	dB μ V/m	dB μ V/m	
4804.0	0.0	41.5	41.5	54.0	12.5	Vertical
4804.0	-3.9	42.4	38.5	54.0	15.5	Horizontal
7206.0	-4.1	45.1	41.0	54.0	13.0	Vertical
7206.0	-6.7	46.2	39.5	54.0	14.5	Horizontal
9608.0	-7.9	48.0	40.1	54.0	13.9	Vertical
9608.0	-8.8	48.8	40.0	54.0	14.0	Horizontal
12010.0	-11.0	51.5	40.5	54.0	13.5	Vertical
12010.0	-10.6	52.4	41.8	54.0	12.2	Horizontal

Result of Tx mode (2442.0 MHz) (GFSK) (Above 1GHz): Pass

Field Strength of Spurious Emissions						
Peak Value						
Frequency	Measured	Correction	Field	Limit	Margin	E-Field
	Level @ 3m	Factor	Strength	@ 3m		Polarity
MHz	dB μ V	dB/m	dB μ V/m	dB μ V/m	dB μ V/m	
4884.0	14.3	41.6	55.9	74.0	18.1	Vertical
4884.0	11.8	42.5	54.3	74.0	19.7	Horizontal
7326.0	10.0	45.2	55.2	74.0	18.8	Vertical
7326.0	8.7	46.3	55.0	74.0	19.0	Horizontal
9768.0	7.6	48.1	55.7	74.0	18.3	Vertical
9768.0	6.3	48.9	55.2	74.0	18.8	Horizontal
12210.0	3.9	51.6	55.5	74.0	18.5	Vertical
12210.0	3.8	52.5	56.3	74.0	17.7	Horizontal

Field Strength of Spurious Emissions						
Average Value						
Frequency	Measured	Correction	Field	Limit	Margin	E-Field
	Level @ 3m	Factor	Strength	@ 3m		Polarity
MHz	dB μ V	dB/m	dB μ V/m	dB μ V/m	dB μ V/m	
4884.0	-1.1	41.6	40.5	54.0	13.5	Vertical
4884.0	-3.2	42.5	39.3	54.0	14.7	Horizontal
7326.0	-5.0	45.2	40.2	54.0	13.8	Vertical
7326.0	-6.2	46.3	40.1	54.0	13.9	Horizontal
9768.0	-7.1	48.1	41.0	54.0	13.0	Vertical
9768.0	-8.9	48.9	40.0	54.0	14.0	Horizontal
12210.0	-11.6	51.6	40.0	54.0	14.0	Vertical
12210.0	-10.7	52.5	41.8	54.0	12.2	Horizontal

The Hong Kong Standards and Testing Centre Ltd.

10 Dai Wang Street, Taipo Industrial Estate, N.T., Hong Kong

Tel: (852) 2666 1888 Fax: (852) 2664 4353 Homepage www.hkstc.org E-mail: hkstc@hkstc.org

This report shall not be reproduced unless with prior written approval from The Hong Kong Standards and Testing Centre Ltd
For Conditions of Issuance of this test report, please refer to the overleaf or Homepage



STC Test Report

Date: 2014-02-18

Page 11 of 41

No.: DM114112

Result of Tx mode (2480.0 MHz) (GFSK) (Above 1GHz): Pass

Field Strength of Spurious Emissions						
Peak Value						
Frequency	Measured	Correction	Field	Limit	Margin	E-Field
MHz	Level @ 3m	Factor	Strength	@ 3m		Polarity
	dB μ V	dB/m	dB μ V/m	dB μ V/m	dB μ V/m	
4960.0	14.4	41.4	55.8	74.0	18.2	Vertical
4960.0	11.8	42.7	54.5	74.0	19.5	Horizontal
7440.0	9.5	45.6	55.1	74.0	18.9	Vertical
7440.0	8.5	46.5	55.0	74.0	19.0	Horizontal
9920.0	8.4	48.6	57.0	74.0	17.0	Vertical
9920.0	5.4	49.7	55.1	74.0	18.9	Horizontal
12400.0	3.8	51.7	55.5	74.0	18.5	Vertical
12400.0	2.9	52.7	55.6	74.0	18.4	Horizontal

Field Strength of Spurious Emissions						
Average Value						
Frequency	Measured	Correction	Field	Limit	Margin	E-Field
MHz	Level @ 3m	Factor	Strength	@ 3m		Polarity
	dB μ V	dB/m	dB μ V/m	dB μ V/m	dB μ V/m	
4960.0	-0.4	41.4	41.0	54.0	13.0	Vertical
4960.0	-2.5	42.7	40.2	54.0	13.8	Horizontal
7440.0	-4.8	45.6	40.8	54.0	13.2	Vertical
7440.0	-5.1	46.5	41.4	54.0	12.6	Horizontal
9920.0	-8.4	48.6	40.2	54.0	13.8	Vertical
9920.0	-9.5	49.7	40.2	54.0	13.8	Horizontal
12400.0	-11.3	51.7	40.4	54.0	13.6	Vertical
12400.0	-12.6	52.7	40.1	54.0	13.9	Horizontal

Remarks:

No additional spurious emissions found between lowest internal used/generated frequency and 30 MHz

* Denotes restricted band of operation.

Measurements were made using a peak detector. Any emission less than 1000MHz and falling within the restricted bands of FCC Rules Part 15 Section 15.205 and the limits of FCC Rules Part 15 Section 15.209 were applied.

Correction Factor included Antenna Factor and Cable Attenuation.

Calculated measurement uncertainty
(9kHz-30MHz): 3.3dB
(30MHz -1GHz): 4.6dB
(1GHz -26GHz): 4.4dB

Emissions in the vertical and horizontal polarizations have been investigated and the worst -case test results are recorded in this report.

The Hong Kong Standards and Testing Centre Ltd.

10 Dai Wang Street, Taipo Industrial Estate, N.T., Hong Kong

Tel: (852) 2666 1888 Fax: (852) 2664 4353 Homepage www.hkstc.org E-mail: hkstc@hkstc.org



STC Test Report

Date: 2014-02-18

Page 12 of 41

No.: DM114112

Limits for Radiated Emissions [FCC 47 CFR 15.209 Class B]:

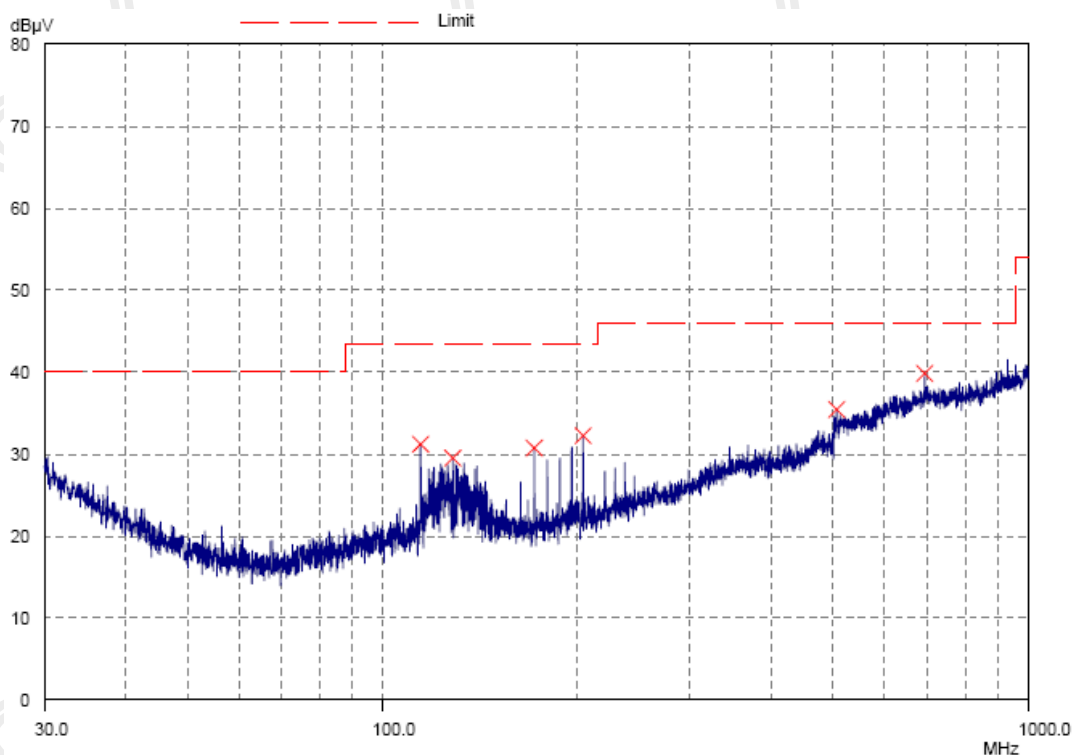
Frequency Range [MHz]	Quasi-Peak Limits [$\mu\text{V}/\text{m}$]
0.009-0.490	2400/F (kHz)
0.490-1.705	24000/F (kHz)
1.705-30	30
30-88	100
88-216	150
216-960	200
Above960	500

The emission limits shown in the above table are based on measurement employing a CISPR quasi-peak detector and above 1000MHz are based on measurements employing an average detector.

Result of Bluetooth Communication mode (EUT paired with iPod, USB port connected to Resistive load) (30MHz – 1GHz): Pass

Please refer to the following table for result details

Horizontal



The Hong Kong Standards and Testing Centre Ltd.
10 Dai Wang Street, Taipo Industrial Estate, N.T., Hong Kong
Tel: (852) 2666 1888 Fax: (852) 2664 4353 Homepage www.hkstc.org E-mail: hkstc@hkstc.org

This report shall not be reproduced unless with prior written approval from The Hong Kong Standards and Testing Centre Ltd
For Conditions of Issuance of this test report, please refer to the overleaf or Homepage



STC Test Report

Date: 2014-02-18

Page 13 of 41

No.: DM114112

Result of Bluetooth Communication mode (EUT paired with iPod, USB port connected to Resistive load) (30MHz – 1GHz): Pass

Radiated Emissions Quasi-Peak					
Emission Frequency MHz	E-Field Polarity	Level @ 3m dB μ V/m	Limit @ 3m dB μ V/m	Level @ 3m μ V/m	Limit @ 3m μ V/m
114.8	Horizontal	31.2	43.5	36.3	150
128.7	Horizontal	29.5	43.5	29.9	150
172.1	Horizontal	30.7	43.5	34.3	150
204.9	Horizontal	32.3	43.5	41.2	150
505.7	Horizontal	35.4	46.0	58.9	200
691.9	Horizontal	39.9	46.0	98.9	200

The Hong Kong Standards and Testing Centre Ltd.

10 Dai Wang Street, Taipo Industrial Estate, N.T., Hong Kong

Tel: (852) 2666 1888 Fax: (852) 2664 4353 Homepage www.hkstc.org E-mail: hkstc@hkstc.org

This report shall not be reproduced unless with prior written approval from The Hong Kong Standards and Testing Centre Ltd
For Conditions of Issuance of this test report, please refer to the overleaf or Homepage



STC Test Report

Date: 2014-02-18

Page 14 of 41

No.: DM114112

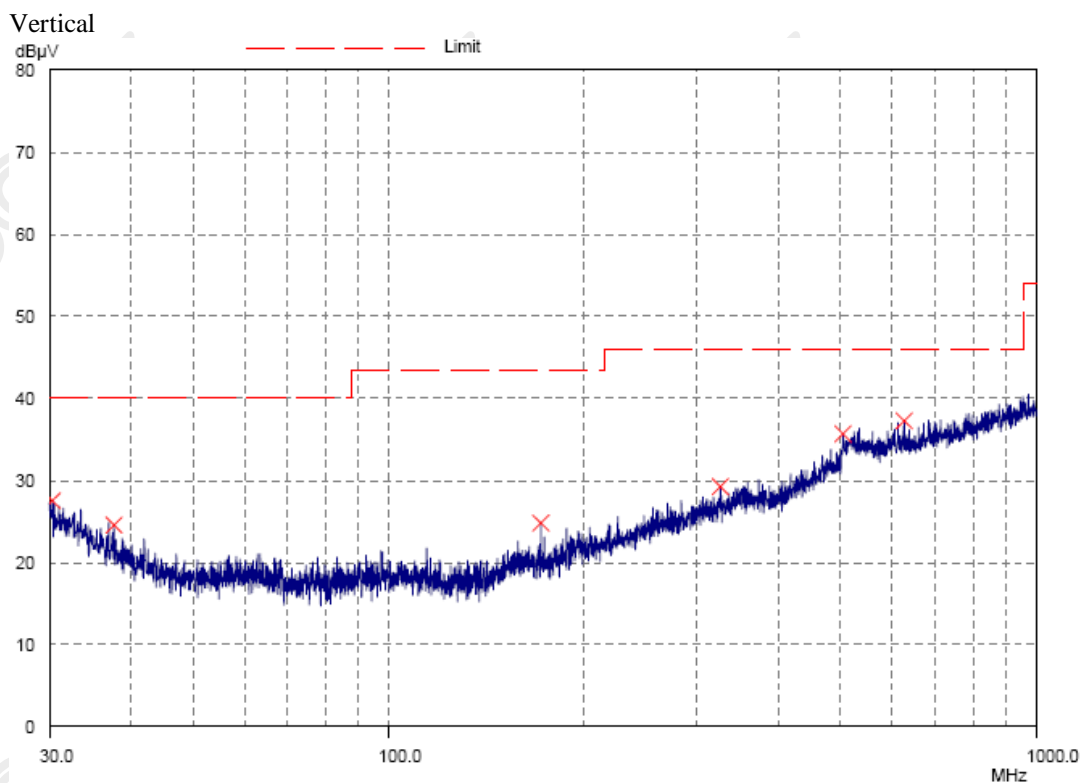
Limits for Radiated Emissions [FCC 47 CFR 15.209 Class B]:

Frequency Range [MHz]	Quasi-Peak Limits [$\mu\text{V/m}$]
0.009-0.490	2400/F (kHz)
0.490-1.705	24000/F (kHz)
1.705-30	30
30-88	100
88-216	150
216-960	200
Above960	500

The emission limits shown in the above table are based on measurement employing a CISPR quasi-peak detector and above 1000MHz are based on measurements employing an average detector.

Result of Bluetooth Communication mode (EUT paired with iPod, USB port connected to Resistive load) (30MHz – 1GHz): Pass

Please refer to the following table for result details



The Hong Kong Standards and Testing Centre Ltd.

10 Dai Wang Street, Taipo Industrial Estate, N.T., Hong Kong

Tel: (852) 2666 1888 Fax: (852) 2664 4353 Homepage www.hkstc.org E-mail: hkstc@hkstc.org

This report shall not be reproduced unless with prior written approval from The Hong Kong Standards and Testing Centre Ltd
For Conditions of Issuance of this test report, please refer to the overleaf or Homepage



STC Test Report

Date: 2014-02-18

Page 15 of 41

No.: DM114112

Result of Bluetooth Communication mode (EUT paired with iPod, USB port connected to Resistive load) (30MHz – 1GHz): Pass

Radiated Emissions Quasi-Peak					
Emission Frequency MHz	E-Field Polarity	Level @ 3m dB μ V/m	Limit @ 3m dB μ V/m	Level @ 3m μ V/m	Limit @ 3m μ V/m
30.3	Vertical	27.5	40.0	23.7	100
37.8	Vertical	24.6	40.0	17.0	100
172.1	Vertical	24.8	43.5	17.4	150
325.6	Vertical	29.3	46.0	29.2	200
503.6	Vertical	35.7	46.0	61.0	200
626.2	Vertical	37.3	46.0	73.3	200

The Hong Kong Standards and Testing Centre Ltd.

10 Dai Wang Street, Taipo Industrial Estate, N.T., Hong Kong

Tel: (852) 2666 1888 Fax: (852) 2664 4353 Homepage www.hkstc.org E-mail: hkstc@hkstc.org

This report shall not be reproduced unless with prior written approval from The Hong Kong Standards and Testing Centre Ltd
For Conditions of Issuance of this test report, please refer to the overleaf or Homepage



STC Test Report

Date: 2014-02-18

Page 16 of 41

No.: DM114112

Limits for Radiated Emissions [FCC 47 CFR 15.209 Class B]:

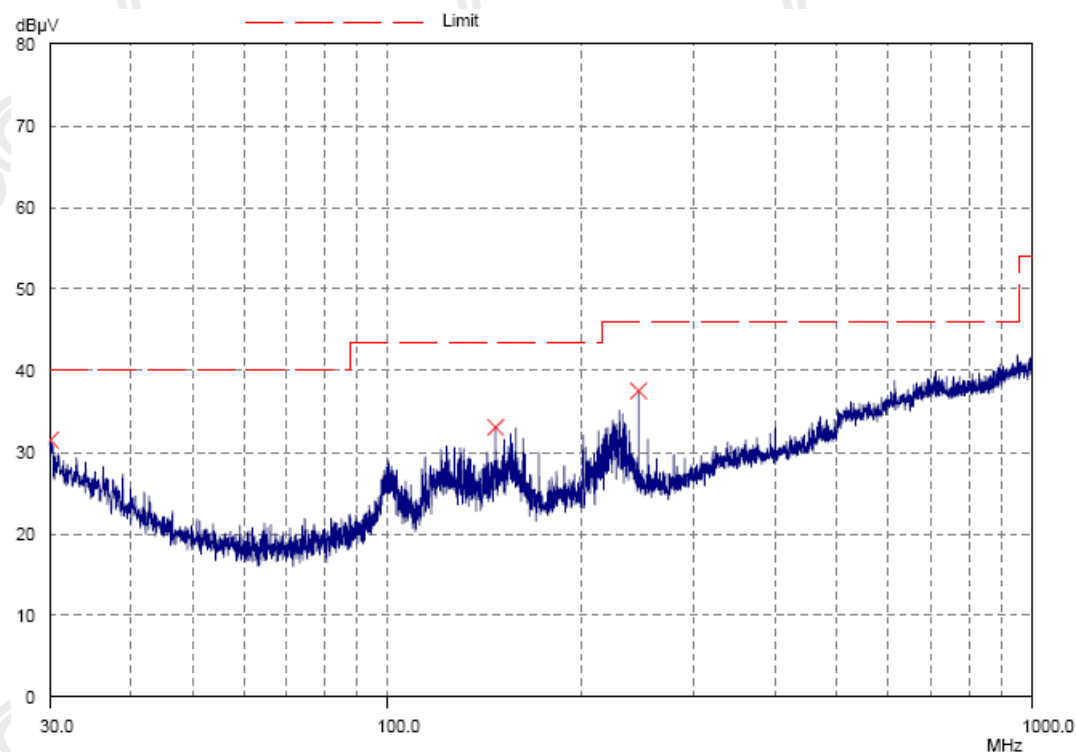
Frequency Range [MHz]	Quasi-Peak Limits [$\mu\text{V}/\text{m}$]
0.009-0.490	2400/F (kHz)
0.490-1.705	24000/F (kHz)
1.705-30	30
30-88	100
88-216	150
216-960	200
Above960	500

The emission limits shown in the above table are based on measurement employing a CISPR quasi-peak detector and above 1000MHz are based on measurements employing an average detector.

Result of Bluetooth Communication + Charging mode (EUT paired with iPod, USB port connected to Resistive load, Charging with adaptor) (30MHz – 1GHz): Pass

Please refer to the following table for result details

Horizontal



The Hong Kong Standards and Testing Centre Ltd.

10 Dai Wang Street, Taipo Industrial Estate, N.T., Hong Kong

Tel: (852) 2666 1888 Fax: (852) 2664 4353 Homepage www.hkstc.org E-mail: hkstc@hkstc.org

This report shall not be reproduced unless with prior written approval from The Hong Kong Standards and Testing Centre Ltd
For Conditions of Issuance of this test report, please refer to the overleaf or Homepage



STC Test Report

Date: 2014-02-18

Page 17 of 41

No.: DM114112

Result of Bluetooth Communication + Charging mode (EUT paired with iPod, USB port connected to Resistive load, Charging with adaptor) (30MHz – 1GHz): Pass

Radiated Emissions Quasi-Peak					
Emission Frequency MHz	E-Field Polarity	Level @ 3m dB μ V/m	Limit @ 3m dB μ V/m	Level @ 3m μ V/m	Limit @ 3m μ V/m
30.1	Horizontal	31.5	40.0	37.6	100
147.5	Horizontal	33.1	43.5	45.2	150
245.8	Horizontal	37.5	46.0	75.0	200

The Hong Kong Standards and Testing Centre Ltd.

10 Dai Wang Street, Taipo Industrial Estate, N.T., Hong Kong

Tel: (852) 2666 1888 Fax: (852) 2664 4353 Homepage www.hkstc.org E-mail: hkstc@hkstc.org

This report shall not be reproduced unless with prior written approval from The Hong Kong Standards and Testing Centre Ltd
For Conditions of Issuance of this test report, please refer to the overleaf or Homepage



STC Test Report

Date: 2014-02-18

Page 18 of 41

No.: DM114112

Limits for Radiated Emissions [FCC 47 CFR 15.209 Class B]:

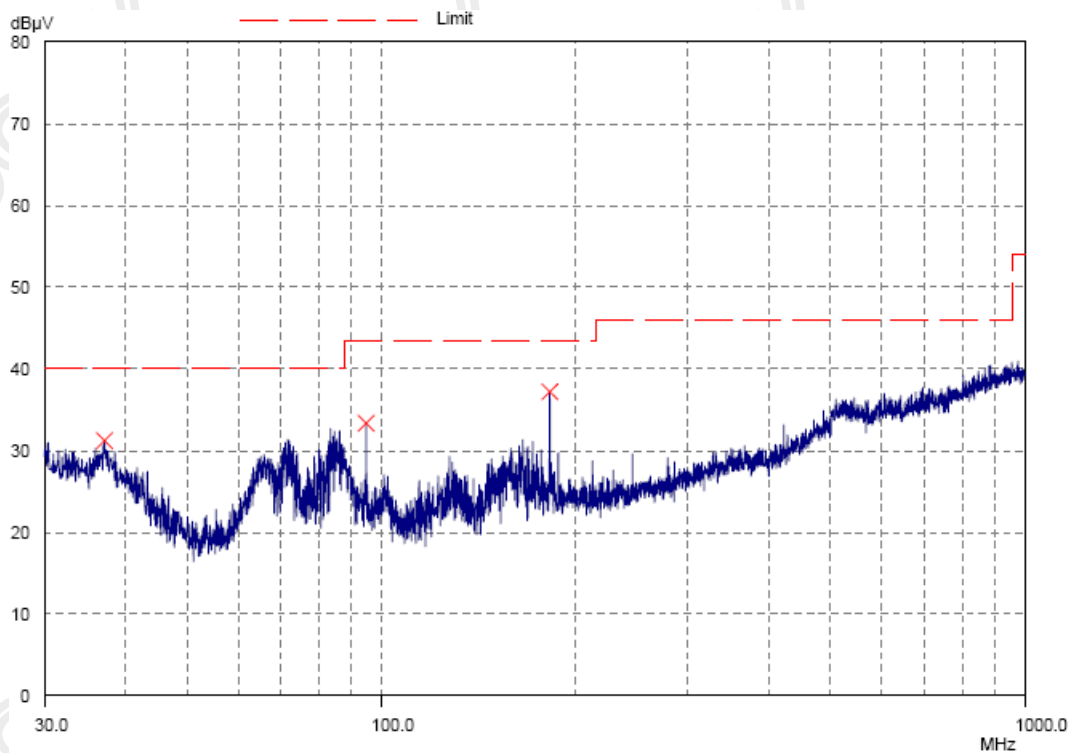
Frequency Range [MHz]	Quasi-Peak Limits [$\mu\text{V}/\text{m}$]
0.009-0.490	2400/F (kHz)
0.490-1.705	24000/F (kHz)
1.705-30	30
30-88	100
88-216	150
216-960	200
Above960	500

The emission limits shown in the above table are based on measurement employing a CISPR quasi-peak detector and above 1000MHz are based on measurements employing an average detector.

Result of Bluetooth Communication + Charging mode (EUT paired with iPod, USB port connected to Resistive load, Charging with adaptor) (30MHz – 1GHz): Pass

Please refer to the following table for result details

Vertical



The Hong Kong Standards and Testing Centre Ltd.

10 Dai Wang Street, Taipo Industrial Estate, N.T., Hong Kong

Tel: (852) 2666 1888 Fax: (852) 2664 4353 Homepage www.hkstc.org E-mail: hkstc@hkstc.org

This report shall not be reproduced unless with prior written approval from The Hong Kong Standards and Testing Centre Ltd
For Conditions of Issuance of this test report, please refer to the overleaf or Homepage



STC Test Report

Date: 2014-02-18

Page 19 of 41

No.: DM114112

Result of Bluetooth Communication + Charging mode (EUT paired with iPod, USB port connected to Resistive load, Charging with adaptor) (30MHz – 1GHz): Pass

Radiated Emissions Quasi-Peak					
Emission Frequency MHz	E-Field Polarity	Level @ 3m dB μ V/m	Limit @ 3m dB μ V/m	Level @ 3m μ V/m	Limit @ 3m μ V/m
37.2	Vertical	31.2	40.0	36.3	100
94.9	Vertical	33.4	43.4	46.8	150
183.1	Vertical	37.2	43.5	72.4	150

Remarks:

Calculated measurement uncertainty (30MHz – 1GHz): 4.6dB

Emissions in the vertical and horizontal polarizations have been investigated and the worst -case test results are recorded in this report.

The Hong Kong Standards and Testing Centre Ltd.

10 Dai Wang Street, Taipo Industrial Estate, N.T., Hong Kong

Tel: (852) 2666 1888 Fax: (852) 2664 4353 Homepage www.hkstc.org E-mail: hkstc@hkstc.org

This report shall not be reproduced unless with prior written approval from The Hong Kong Standards and Testing Centre Ltd
For Conditions of Issuance of this test report, please refer to the overleaf or Homepage



STC Test Report

Date: 2014-02-18

Page 20 of 41

No.: DM114112

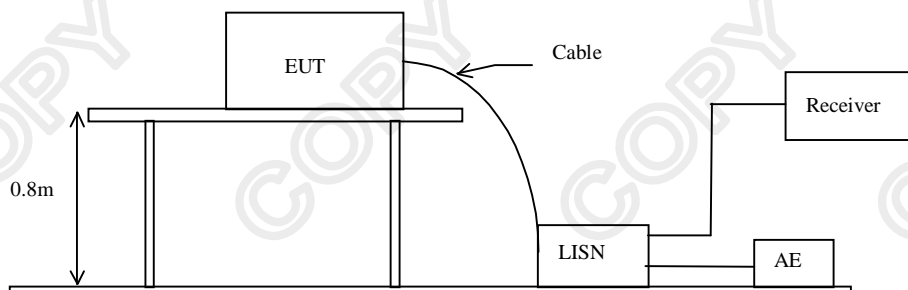
3.1.3 Conducted Emissions (0.15MHz to 30MHz)

Test Requirement:	FCC 47CFR 15.207
Test Method:	ANSI C63.4:2009
Test Date:	2014-02-17
Mode of Operation:	Bluetooth Communication mode (GFSK)
Test Voltage:	117Va.c., 60Hz

Test Method:

The test was performed in accordance with ANSI C63.4: 2009, with the following: an initial measurement was performed in peak and average detection mode on the live line, any emissions recorded within 30dB of the relevant limit line were re-measured using quasi-peak and average detection on the live and neutral lines with the worst case recorded in the table of results.

Test Setup:



The Hong Kong Standards and Testing Centre Ltd.

10 Dai Wang Street, Taipo Industrial Estate, N.T., Hong Kong

Tel: (852) 2666 1888 Fax: (852) 2664 4353 Homepage www.hkstc.org E-mail: hkstc@hkstc.org

This report shall not be reproduced unless with prior written approval from The Hong Kong Standards and Testing Centre Ltd
For Conditions of Issuance of this test report, please refer to the overleaf or Homepage



STC Test Report

Date: 2014-02-18

Page 21 of 41

No.: DM114112

Limit for Conducted Emissions (FCC 47 CFR 15.207):

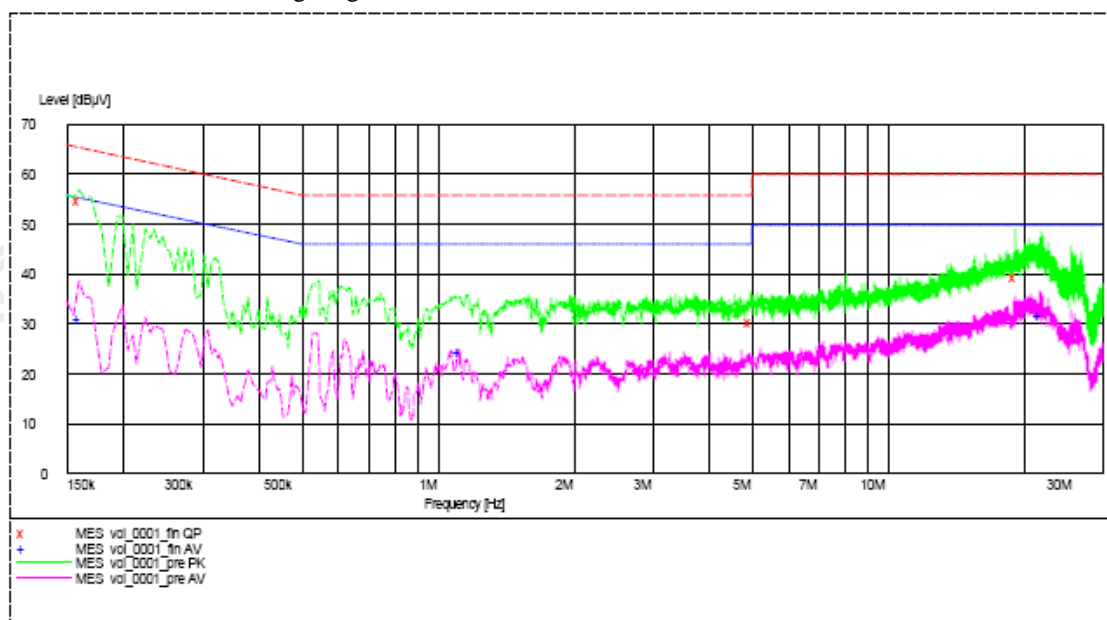
Frequency Range [MHz]	Quasi-Peak Limits [dB μ V]	Average [dB μ V]
0.15-0.5	66 to 56*	56 to 46*
0.5-5.0	56	46
5.0-30.0	60	50

* Decreases with the logarithm of the frequency.

Limits for Conducted Emissions Test, please refer to limit lines (Quasi-Peak and Average) in the following diagram.

Result of Bluetooth Communication + Charging mode (EUT paired with iPod, USB port connected to Resistive load, Charging with adaptor) (L): PASS

Please refer to the following diagram for individual results.



Conductor	Frequency MHz	Quasi-peak		Average	
		Level dB μ V	Limit dB μ V	Level dB μ V	Limit dB μ V
Live	0.160	54.9	66.0	31.0	56.0
Live	1.115	-*-	-*-	24.3	46.0
Live	21.815	-*-	-*-	31.8	50.0
Live	4.965	30.5	56.0	-*-	-*-
Live	19.125	39.3	60.0	-*-	-*-

The Hong Kong Standards and Testing Centre Ltd.

10 Dai Wang Street, Taipo Industrial Estate, N.T., Hong Kong

Tel: (852) 2666 1888 Fax: (852) 2664 4353 Homepage www.hkstc.org E-mail: hkstc@hkstc.org



STC Test Report

Date: 2014-02-18

Page 22 of 41

No.: DM114112

Limit for Conducted Emissions (FCC 47 CFR 15.207):

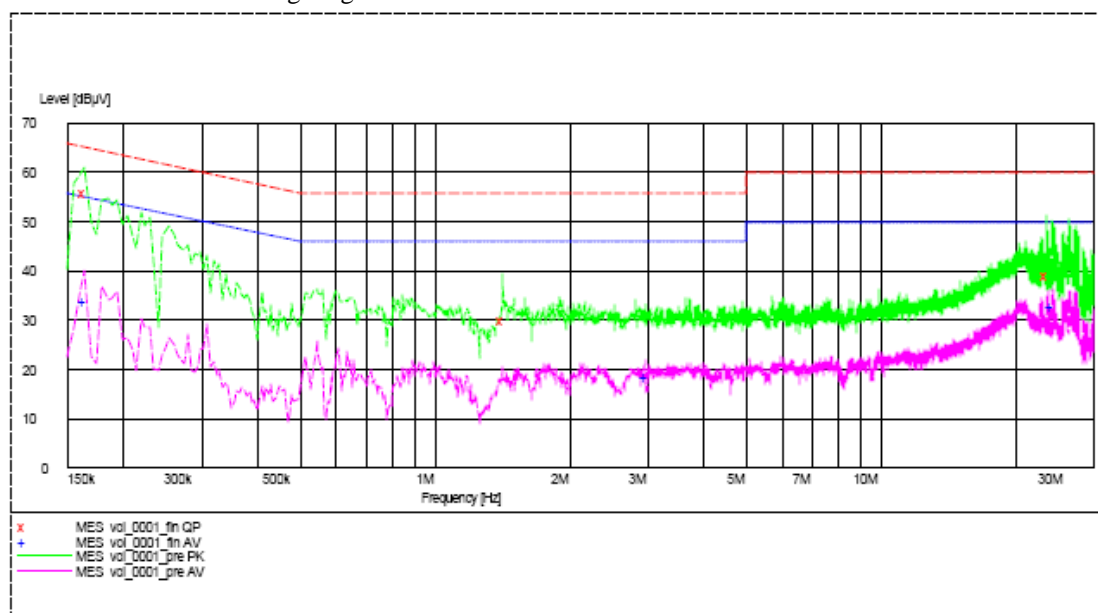
Frequency Range [MHz]	Quasi-Peak Limits [dB μ V]	Average [dB μ V]
0.15-0.5	66 to 56*	56 to 46*
0.5-5.0	56	46
5.0-30.0	60	50

* Decreases with the logarithm of the frequency.

Limits for Conducted Emissions Test, please refer to limit lines (Quasi-Peak and Average) in the following diagram.

Result of Bluetooth Communication + Charging mode (EUT paired with iPod, USB port connected to Resistive load, Charging with adaptor) (N): PASS

Please refer to the following diagram for individual results.



Conductor	Frequency MHz	Quasi-peak		Average	
		Level dB μ V	Limit dB μ V	Level dB μ V	Limit dB μ V
Live or Neutral					
Neutral	0.165	55.9	65.0	33.7	55.0
Neutral	2.970	-*-	-*-	18.6	46.0
Neutral	24.225	-*-	-*-	32.7	50.0
Neutral	1.420	30.1	56.0	-*-	-*-
Neutral	23.605	39.2	60.0	-*-	-*-

Remarks:

Calculated measurement uncertainty (0.15MHz – 30MHz): 3.2dB

-*- Emission(s) that is far below the corresponding limit line.

The Hong Kong Standards and Testing Centre Ltd.

10 Dai Wang Street, Taipo Industrial Estate, N.T., Hong Kong

Tel: (852) 2666 1888 Fax: (852) 2664 4353 Homepage www.hkstc.org E-mail: hkstc@hkstc.org



STC Test Report

Date: 2014-02-18

Page 23 of 41

No.: DM114112

3.1.3 Power Spectral Density

Test Requirement: FCC 47CFR 15.247(e)
Test Method: FCC KDB Publication 558074 D01 DTS Meas Guidance v02
Test Date: 2014-01-20
Mode of Operation: Bluetooth 4.0 Tx mode

Test Method:

The RF output of the EUT was connected to the spectrum analyzer. Set the fundamental frequency as the center frequency of the spectral analyzer. Use RBW=3kHz , VBW= 10KHz , Set the span to 1.5 times the DTS channel bandwidth. Detector = peak, Sweep time = auto couple , Trace mode = max hold. Measure the Power Spectral Density (PSD) and record the results in dBm.

Test Setup:

As Test Setup of clause 3.1.1 in this test report.

Test Limit:

The maximum power spectral density (PSD) shall not exceeded 8dBm in any 3kHz band.

Results of BT 4.0 Mode (Tx:2402MHz to 2480MHz) : Pass (TX Unit)

Maximum power spectral density

Transmitter Frequency (MHz)	Maximum Power spectral density level / 3kHz band (dBm)	Maximum Power spectral density / 3kHz band limit
2402.0	-13.94	8dBm
2442.0	-11.86	8dBm
2480.0	-11.40	8dBm

The Hong Kong Standards and Testing Centre Ltd.

10 Dai Wang Street, Taipo Industrial Estate, N.T., Hong Kong

Tel: (852) 2666 1888 Fax: (852) 2664 4353 Homepage www.hkstc.org E-mail: hkstc@hkstc.org

This report shall not be reproduced unless with prior written approval from The Hong Kong Standards and Testing Centre Ltd
For Conditions of Issuance of this test report, please refer to the overleaf or Homepage



STC Test Report

Date: 2014-02-18

Page 24 of 41

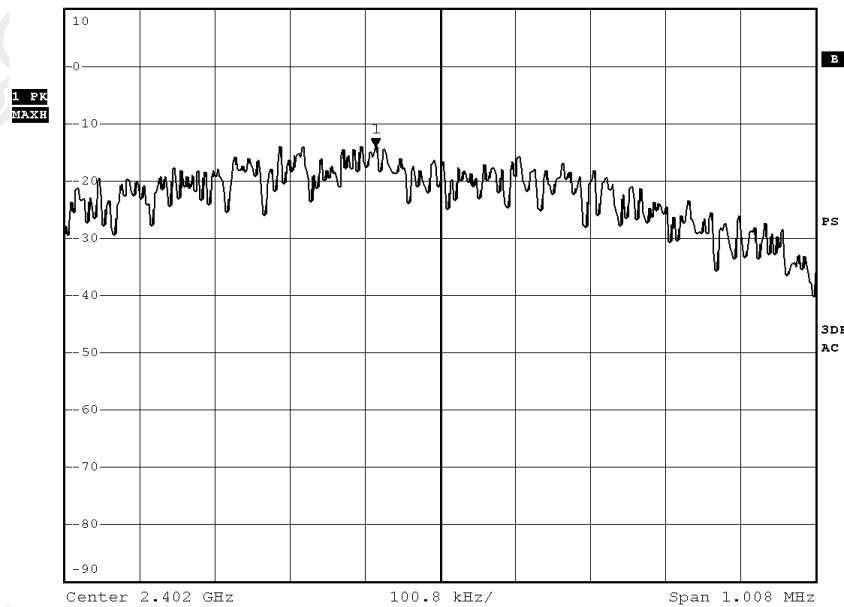
No.: DM114112

Bluetooth 4.0 mode (Tx: 2402MHz to 2480MHz)

2402.0 MHz



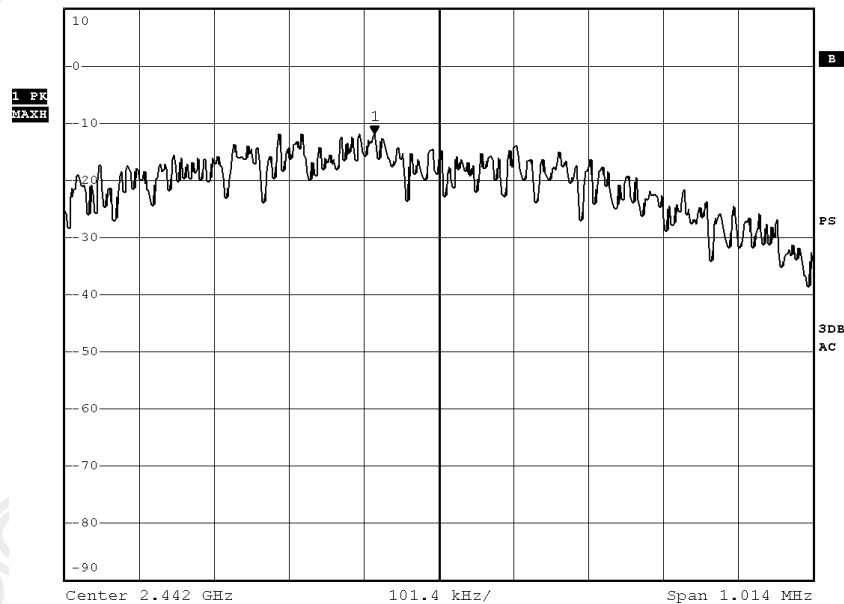
Ref 10 dBm *Att 25 dB *RBW 3 kHz Marker 1 [T1]
*VBW 10 kHz -13.94 dBm
SWT 115 ms 2.401913312 GHz



2442.0 MHz



Ref 10 dBm *Att 25 dB *RBW 3 kHz Marker 1 [T1]
*VBW 10 kHz -11.86 dBm
SWT 115 ms 2.441912796 GHz



The Hong Kong Standards and Testing Centre Ltd.
10 Dai Wang Street, Taipo Industrial Estate, N.T., Hong Kong
Tel: (852) 2666 1888 Fax: (852) 2664 4353 Homepage www.hkstc.org E-mail: hkstc@hkstc.org

This report shall not be reproduced unless with prior written approval from The Hong Kong Standards and Testing Centre Ltd
For Conditions of Issuance of this test report, please refer to the overleaf or Homepage



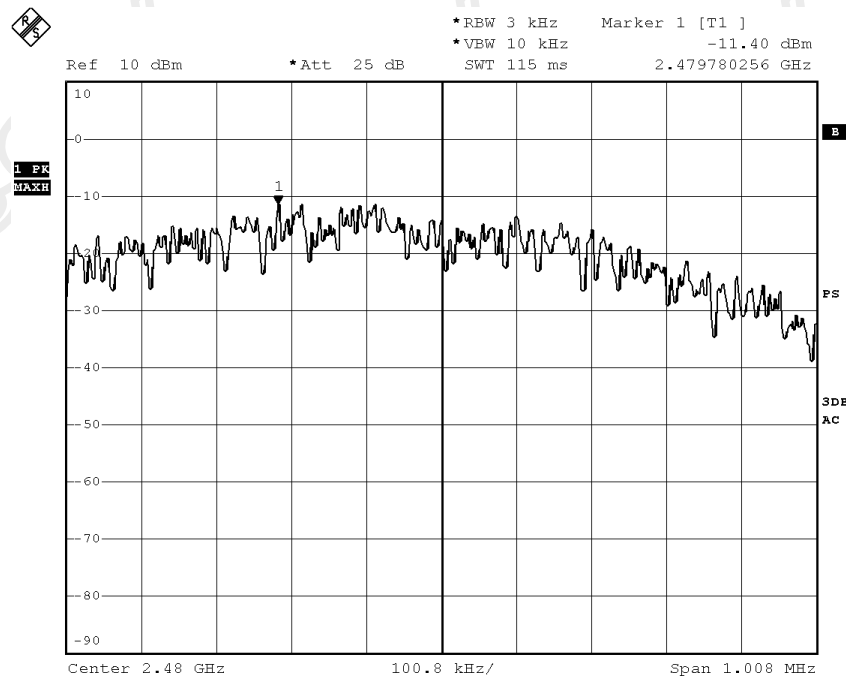
STC Test Report

Date: 2014-02-18

Page 25 of 41

No.: DM114112

2480.0 MHz



The Hong Kong Standards and Testing Centre Ltd.

10 Dai Wang Street, Taipo Industrial Estate, N.T., Hong Kong

Tel: (852) 2666 1888 Fax: (852) 2664 4353 Homepage www.hkstc.org E-mail: hkstc@hkstc.org

This report shall not be reproduced unless with prior written approval from The Hong Kong Standards and Testing Centre Ltd
For Conditions of Issuance of this test report, please refer to the overleaf or Homepage



STC Test Report

Date: 2014-02-18

Page 26 of 41

No.: DM114112

3.1.4 6dB Bandwidth Measurement

Test Requirement: FCC 47CFR 15.247(a)(2)
Test Method: FCC KDB Publication 558074 D01 DTS Meas Guidance v02
Test Date: 2014-01-20
Mode of Operation: Bluetooth 4.0 Tx mode

Test Method:

The bandwidth is measured at an amplitude level reduced from the reference level by a specified ratio. The reference level is the level of the highest amplitude signal observed from the transmitter at the fundamental frequency. Once the reference level is established, the equipment is conditioned with typical modulating signal to produce the worst-case (i.e. the widest) bandwidth.

Test Setup:

As Test Setup of clause 3.1.1 in this test report.

The Hong Kong Standards and Testing Centre Ltd.

10 Dai Wang Street, Taipo Industrial Estate, N.T., Hong Kong
Tel: (852) 2666 1888 Fax: (852) 2664 4353 Homepage www.hkstc.org E-mail: hkstc@hkstc.org

This report shall not be reproduced unless with prior written approval from The Hong Kong Standards and Testing Centre Ltd
For Conditions of Issuance of this test report, please refer to the overleaf or Homepage



STC Test Report

Date: 2014-02-18

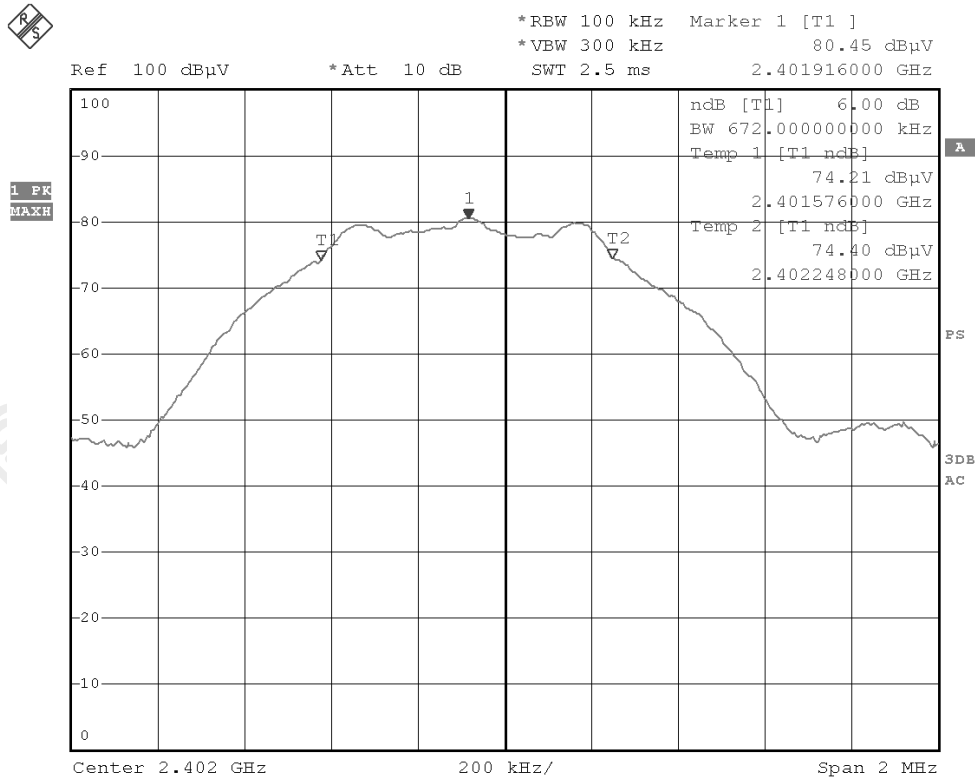
Page 27 of 41

No.: DM114112

Limits for 6dB Bandwidth Measurement:

Center Frequency [MHz]	6dB Bandwidth [MHz]	FCC Limits [kHz]
2402.0	0.672	> 500

6 dB Bandwidth Plot on Configuration BT 4.0 (GFSK: 2402MHz)



The Hong Kong Standards and Testing Centre Ltd.

10 Dai Wang Street, Taipo Industrial Estate, N.T., Hong Kong

Tel: (852) 2666 1888 Fax: (852) 2664 4353 Homepage www.hkstc.org E-mail: hkstc@hkstc.org

This report shall not be reproduced unless with prior written approval from The Hong Kong Standards and Testing Centre Ltd
For Conditions of Issuance of this test report, please refer to the overleaf or Homepage



STC Test Report

Date: 2014-02-18

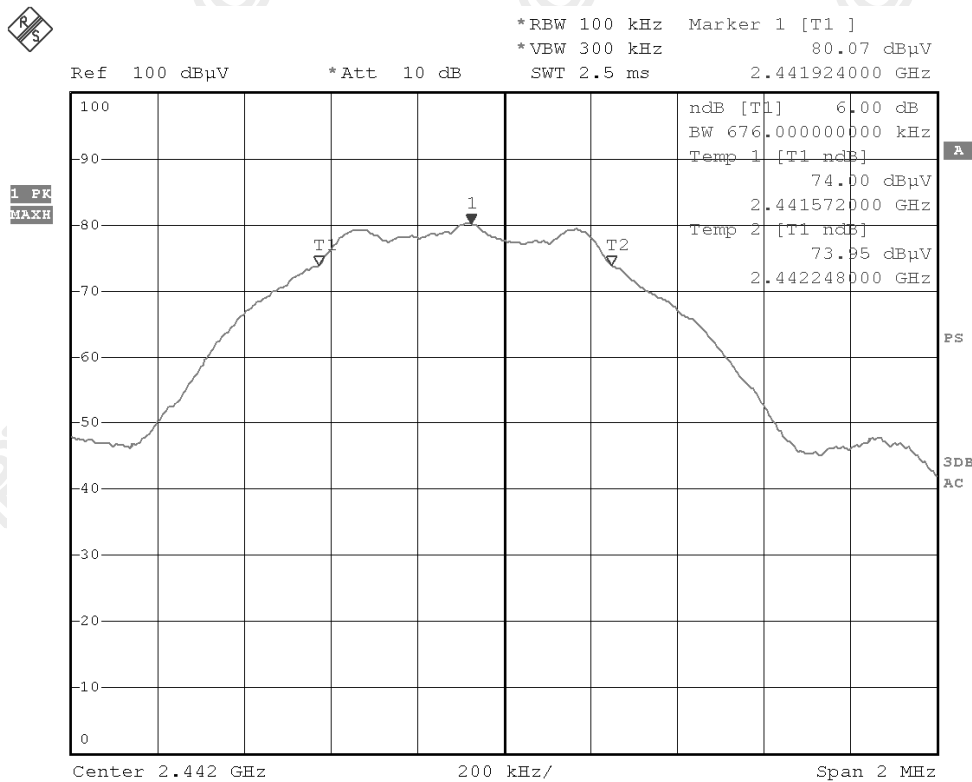
Page 28 of 41

No.: DM114112

Limits for 6dB Bandwidth Measurement:

Center Frequency [MHz]	6dB Bandwidth [MHz]	FCC Limits [kHz]
2442.0	0.676	> 500

6 dB Bandwidth Plot on Configuration BT 4.0 (GFSK: 2442MHz)



The Hong Kong Standards and Testing Centre Ltd.

10 Dai Wang Street, Taipo Industrial Estate, N.T., Hong Kong

Tel: (852) 2666 1888 Fax: (852) 2664 4353 Homepage www.hkstc.org E-mail: hkstc@hkstc.org

This report shall not be reproduced unless with prior written approval from The Hong Kong Standards and Testing Centre Ltd
For Conditions of Issuance of this test report, please refer to the overleaf or Homepage



STC Test Report

Date: 2014-02-18

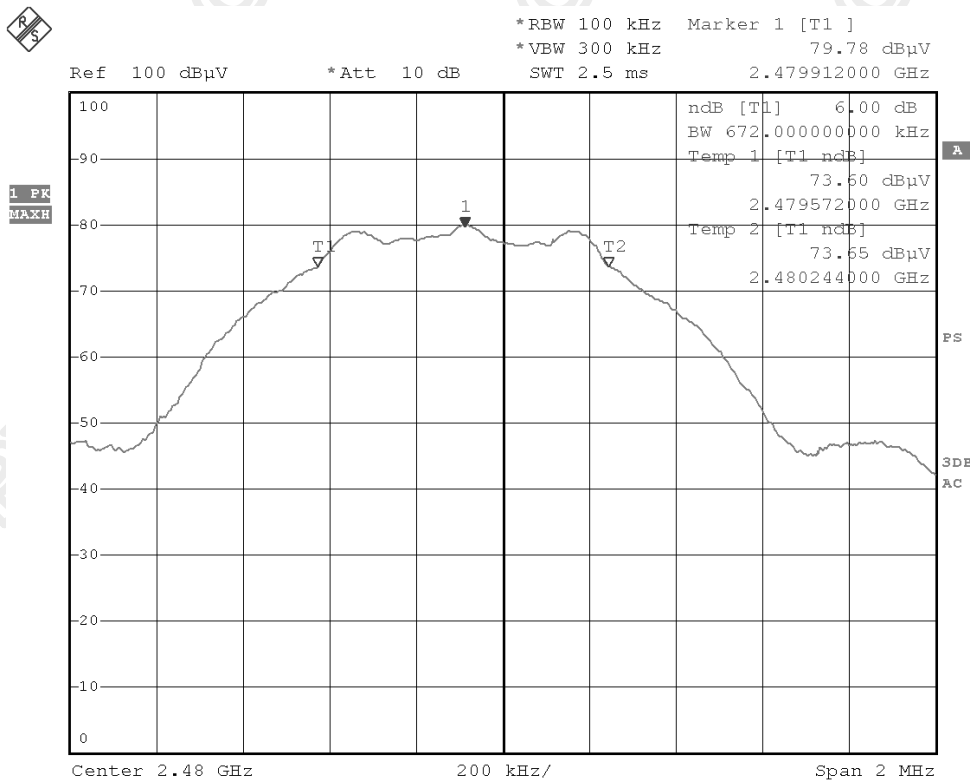
Page 29 of 41

No.: DM114112

Limits for 6dB Bandwidth Measurement:

Center Frequency [MHz]	6dB Bandwidth [MHz]	FCC Limits [kHz]
2480.0	0.672	> 500

6 dB Bandwidth Plot on Configuration BT 4.0 (GFSK: 2480MHz)



The Hong Kong Standards and Testing Centre Ltd.

10 Dai Wang Street, Taipo Industrial Estate, N.T., Hong Kong

Tel: (852) 2666 1888 Fax: (852) 2664 4353 Homepage www.hkstc.org E-mail: hkstc@hkstc.org

This report shall not be reproduced unless with prior written approval from The Hong Kong Standards and Testing Centre Ltd
For Conditions of Issuance of this test report, please refer to the overleaf or Homepage



STC Test Report

Date: 2014-02-18

Page 30 of 41

No.: DM114112

3.1.5 Band Edges Measurement (Radiated)

Test Requirement: FCC 47CFR 15.247
Test Method: FCC KDB Publication 558074 D01 DTS Meas Guidance v02
Test Date: 2014-01-20
Mode of Operation: Bluetooth 4.0 Tx mode

Test Method:

The band edge is measured at an amplitude level reduced from the reference level by a specified ratio. The reference level is the level of the highest amplitude signal observed from the transmitter at the fundamental frequency. The RBW and VBW are set to 100kHz for this measurement.

Test Setup:

As Test Setup of clause 3.1.2 in this test report.

The Hong Kong Standards and Testing Centre Ltd.

10 Dai Wang Street, Taipo Industrial Estate, N.T., Hong Kong
Tel: (852) 2666 1888 Fax: (852) 2664 4353 Homepage www.hkstc.org E-mail: hkstc@hkstc.org

This report shall not be reproduced unless with prior written approval from The Hong Kong Standards and Testing Centre Ltd
For Conditions of Issuance of this test report, please refer to the overleaf or Homepage



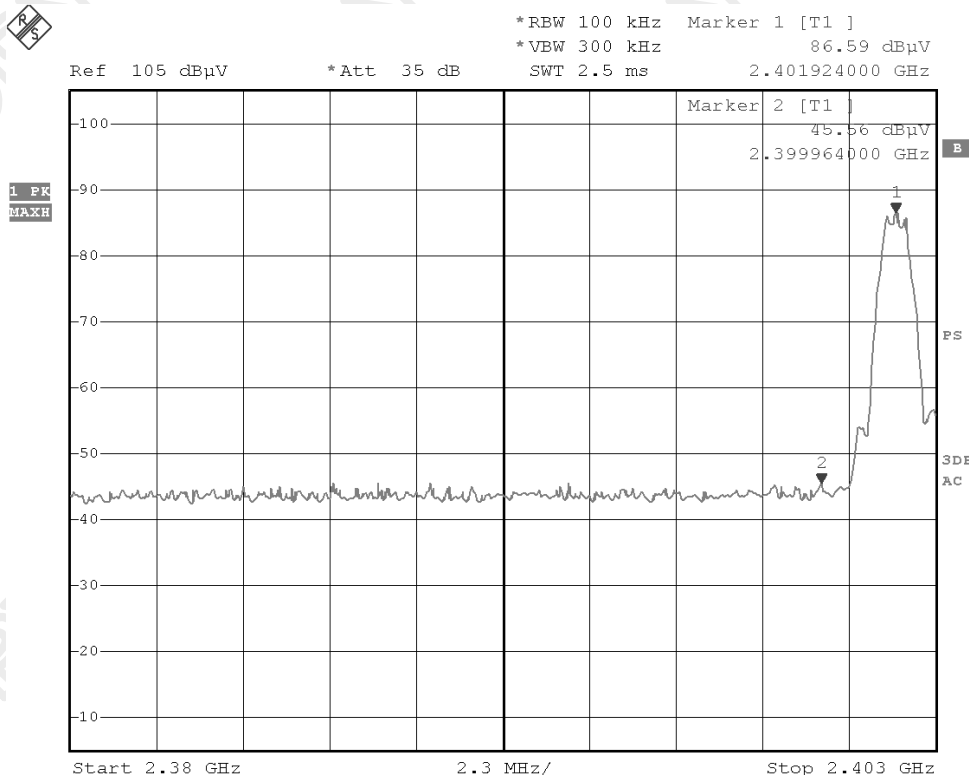
STC Test Report

Date: 2014-02-18

Page 31 of 41

No.: DM114112

Band-edge Compliance of RF Emissions – Lowest (GFSK: BT4.0 mode 2402MHz)



Field Strength of Band-edge Compliance						
Peak Value						
Frequency	Measured Level @ 3m	Correction Factor	Field Strength	Limit @ 3m	Margin	E-Field Polarity
MHz	dBµV	dB/m	dBµV/m	dBµV/m	dBµV/m	
2400.0	18.9	35.4	54.3	74.0	19.7	Vertical
Field Strength of Band-edge Compliance						
Average Value						
Frequency	Measured Level @ 3m	Correction Factor	Field Strength	Limit @ 3m	Margin	E-Field Polarity
MHz	dBµV	dB/m	dBµV/m	dBµV/m	dBµV/m	
2400.0	3.6	35.4	39.0	54.0	15.0	Vertical

The Hong Kong Standards and Testing Centre Ltd.

10 Dai Wang Street, Taipo Industrial Estate, N.T., Hong Kong

Tel: (852) 2666 1888 Fax: (852) 2664 4353 Homepage www.hkstc.org E-mail: hkstc@hkstc.org



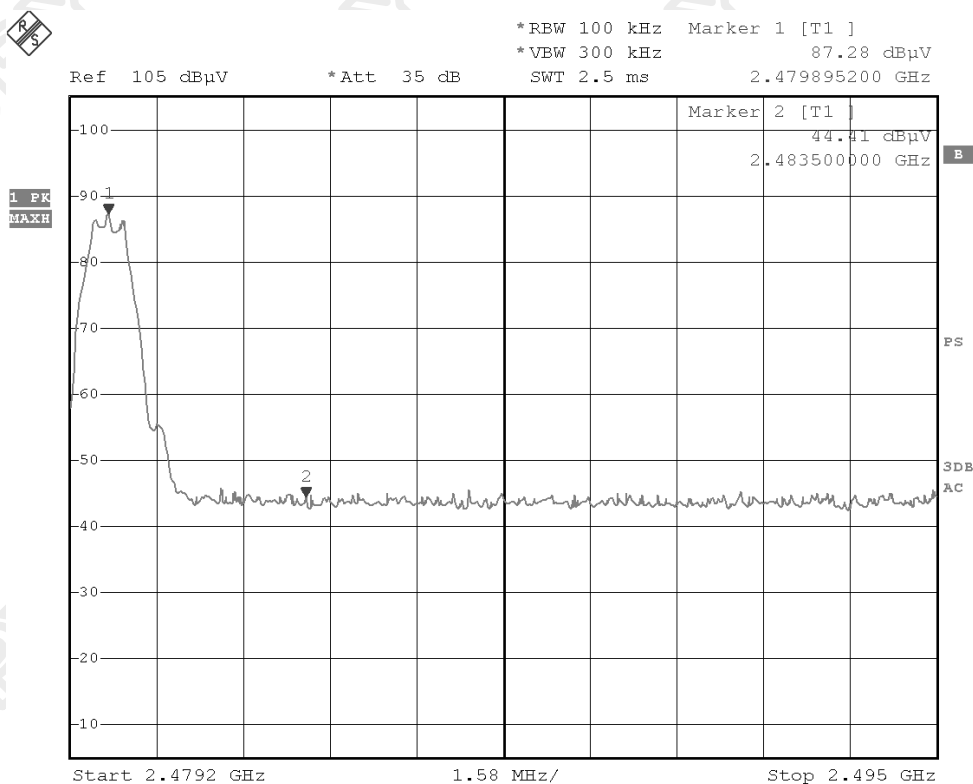
STC Test Report

Date: 2014-02-18

Page 32 of 41

No.: DM114112

Band-edge Compliance of RF Emissions – Highest (GFSK: BT4.0 mode 2480MHz)



Field Strength of Band-edge Compliance						
Peak Value						
Frequency	Measured Level @3m	Correction Factor	Field Strength	Limit @ 3m	Margin	E-Field Polarity
MHz	dBμV	dB/m	dBμV/m	dBμV/m	dBμV/m	
2483.5	18.1	35.4	53.5	74.0	20.5	Horizontal
Field Strength of Band-edge Compliance						
Average Value						
Frequency	Measured Level @3m	Correction Factor	Field Strength	Limit @ 3m	Margin	E-Field Polarity
MHz	dBμV	dB/m	dBμV/m	dBμV/m	dBμV/m	
2483.5	3.4	35.4	38.8	54.0	15.2	Horizontal

The Hong Kong Standards and Testing Centre Ltd.

10 Dai Wang Street, Taipo Industrial Estate, N.T., Hong Kong

Tel: (852) 2666 1888 Fax: (852) 2664 4353 Homepage www.hkstc.org E-mail: hkstc@hkstc.org

This report shall not be reproduced unless with prior written approval from The Hong Kong Standards and Testing Centre Ltd
For Conditions of Issuance of this test report, please refer to the overleaf or Homepage



STC Test Report

Date: 2014-02-18

Page 33 of 41

No.: DM114112

3.1.6 Antenna Requirement

Test Requirements: § 15.203

Test Specification:

An intentional radiator shall be designed to ensure that no antenna other than that furnished by the responsible party shall be used with the device. The use of a permanently attached antenna or of an antenna that uses a unique coupling to the intentional radiator shall be considered sufficient to comply with the provisions of this section. The manufacturer may design the unit so that a broken antenna can be replaced by the user, but the use of a standard antenna jack or electrical connector is prohibited.

Test Results:

This is Meander line antenna. There is no external antenna, the antenna gain = 2.0dBi.
All component install on inside of EUT. User unable to remove or changed the Antenna.

The Hong Kong Standards and Testing Centre Ltd.

10 Dai Wang Street, Taipo Industrial Estate, N.T., Hong Kong
Tel: (852) 2666 1888 Fax: (852) 2664 4353 Homepage www.hkstc.org E-mail: hkstc@hkstc.org

This report shall not be reproduced unless with prior written approval from The Hong Kong Standards and Testing Centre Ltd
For Conditions of Issuance of this test report, please refer to the overleaf or Homepage



STC Test Report

Date: 2014-02-18

Page 34 of 41

No.: DM114112

3.1.7 RF Exposure

Test Requirement: FCC 47CFR 15.247(i)
Test Date: 2014-01-23
Mode of Operation: BT mode
Dimension of EUT: 237mm x 62mm x 120mm

Requirements:

In 15.247(i), an equipment shall be operated in a manner that ensures that the public is not exposed to radio frequency energy levels in excess of the limits in §§ 1.1310 and 2.1093 of this chapter. Applications to the Commission for construction permits, licenses to transmit or renewals thereof, equipment authorizations or modifications in existing facilities must contain a statement confirming compliance with the limits unless the facility, operation, or transmitter is categorically excluded, as discussed below. Technical information showing the basis for this statement must be submitted to the Commission upon request.

According to KDB447498 D01 General RF Exposure Guidance v05, unless specifically required by the published RF exposure KDB procedures, standalone 1-g head or body and 10-g extremity SAR evaluation for general population exposure conditions, by measurement or numerical simulation, is not required when the corresponding SAR Exclusion Threshold condition.

Test Results:

RF Exposure Evaluation

The Maximum conducted output power = 1.79 mW (at frequency = 2.480 GHz)

It's Conducted source-based time-averaging output power = 1.78 mW (at frequency = 2.480 GHz)

Since the SAR test exclusion thresholds for 2450MHz at test separation distances ≤ 5 mm = 10mW and the Conducted source-based time-averaging output power is less than 10mW.

Therefore, the SAR evaluation can be exempted.

The Hong Kong Standards and Testing Centre Ltd.

10 Dai Wang Street, Taipo Industrial Estate, N.T., Hong Kong

Tel: (852) 2666 1888 Fax: (852) 2664 4353 Homepage www.hkstc.org E-mail: hkstc@hkstc.org



STC Test Report

Date: 2014-02-18

Page 35 of 41

No.: DM114112

Appendix A

List of Measurement Equipment

EQP NO.	DESCRIPTION	MANUFACTURER	MODEL NO.	SERIAL NO.	LAST CAL	DUE CAL
EMD004	LISN	ROHDE & SCHWARZ	ESH3-Z5	100102	2013.03.15	2014.03.14
EMD022	EMI Test Receiver	ROHDE & SCHWARZ	ESCS30	100314	2013.03.15	2014.03.14
EMD061	Biconilog Antenna	ETS.LINDGREN	3142C	00060439	2012.11.03	2014.11.02
EMD062	Double-Ridged Waveguide (1GHz – 18GHz)	ETS.LINDGREN	3117	00075933	2012.11.28	2014.11.27
EMD084	MULTI-DVICE CONTROLLER	ETS.LINDGREN	2090	00060107	N/A	N/A
EMD088	Video Contol Unit	ETS.LINDGREN	Y21953A	2601073	N/A	N/A
EMD093	Monitor	ViewSonic	VA9036	Q8X064201876	N/A	N/A
EMD102	Intelligent Frequency	Ainuo Instrument Co., Ltd	AN97005SS	79707454	N/A	N/A
EMD103	Intelligent Frequency	Ainuo Instrument Co., Ltd	AN97005SS	79707455	N/A	N/A
EMD105	FACT-3 EMC Chamber	ETS.LINDGREN	FACT-3	3803	N/A	N/A
EMD106	Shielding Room #1	ETS.LINDGREN	RFD-100	3802	N/A	N/A
EMD111	Power meter	ROHDE & SCHWARZ	NRVD	102051	2013.03.15	2014.03.14
	100V Insertion Unit	ROHDE & SCHWARZ	URV5-Z4	100464	2013.03.15	2014.03.14
EMD113	Pre-Amplifier	ROHDE & SCHWARZ	N/A	1129588	2013.03.15	2014.03.14
EMD124	Loop Antenna	ETS-Lindgren	6502	00104905	2012.03.26	2014.03.25
EMD131	Standard Gain Horn Antenna (18GHz – 26.5GHz)	Chengdu AINFO Inc.	JXTXLB-42-15-C-KF	J202110072100	2013.01.25	2015.01.24

Remarks:-

CM Corrective Maintenance
N/A Not Applicable or Not Available
TBD To Be Determined

Appendix B

Ancillary Equipment

ITEM NO.	DESCRIPTION	MODEL NO.	FCC ID	REMARK
1	iPod Touch	A1367	BCG-E2407	N/A
2	Resistive load	N/A	N/A	N/A



STC Test Report

Date: 2014-02-18

Page 36 of 41

No.: DM114112

Appendix C

Photographs of EUT

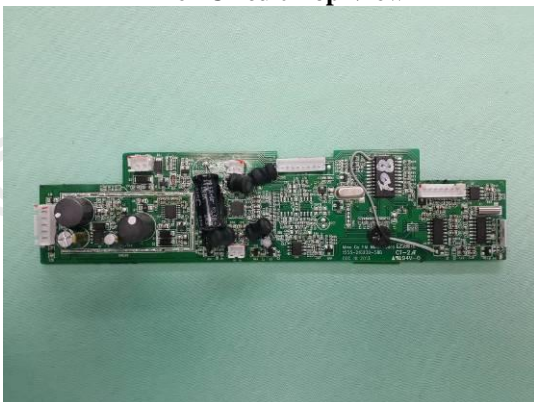
Front View of the product



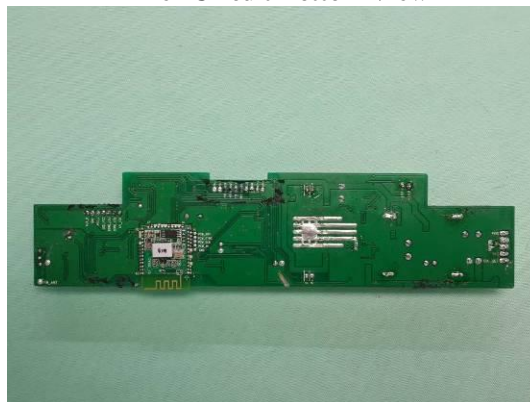
Rear View of the product



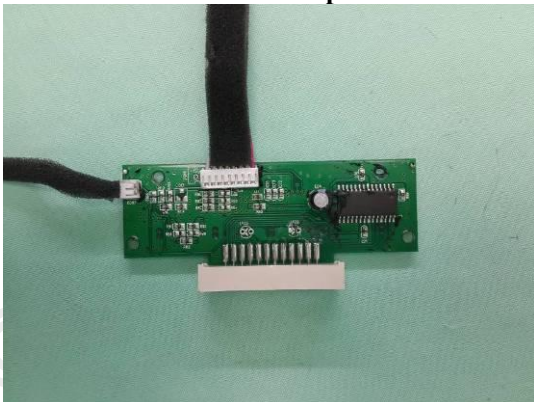
Inner Circuit Top View



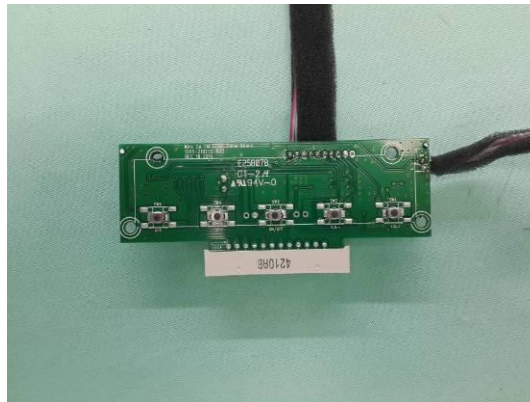
Inner Circuit Bottom View



Inner Circuit Top View



Inner Circuit Bottom View



The Hong Kong Standards and Testing Centre Ltd.

10 Dai Wang Street, Taipo Industrial Estate, N.T., Hong Kong

Tel: (852) 2666 1888 Fax: (852) 2664 4353 Homepage www.hkstc.org E-mail: hkstc@hkstc.org

This report shall not be reproduced unless with prior written approval from The Hong Kong Standards and Testing Centre Ltd
For Conditions of Issuance of this test report, please refer to the overleaf or Homepage



STC Test Report

Date: 2014-02-18

Page 37 of 41

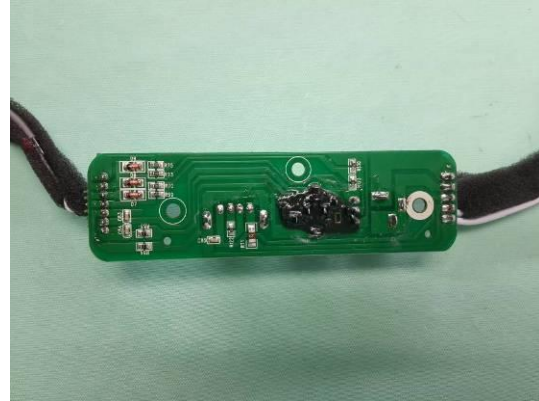
No.: DM114112

Photographs of EUT

Inner Circuit Top View



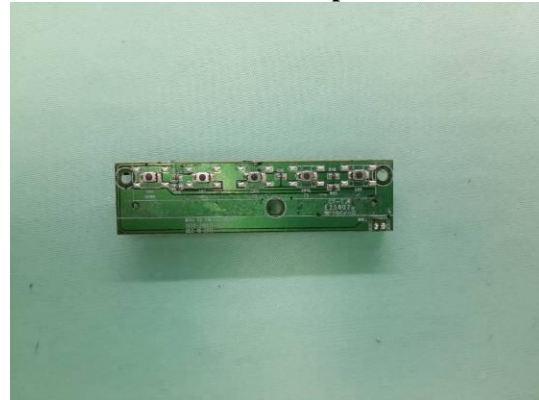
Inner Circuit Top View



Inner Circuit Top View

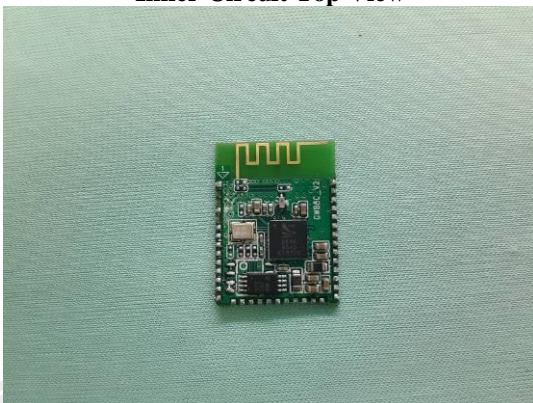


Inner Circuit Top View



Inner Circuit Top View

Inner Circuit Bottom View



The Hong Kong Standards and Testing Centre Ltd.

10 Dai Wang Street, Taipo Industrial Estate, N.T., Hong Kong

Tel: (852) 2666 1888 Fax: (852) 2664 4353 Homepage www.hkstc.org E-mail: hkstc@hkstc.org

This report shall not be reproduced unless with prior written approval from The Hong Kong Standards and Testing Centre Ltd
For Conditions of Issuance of this test report, please refer to the overleaf or Homepage



STC Test Report

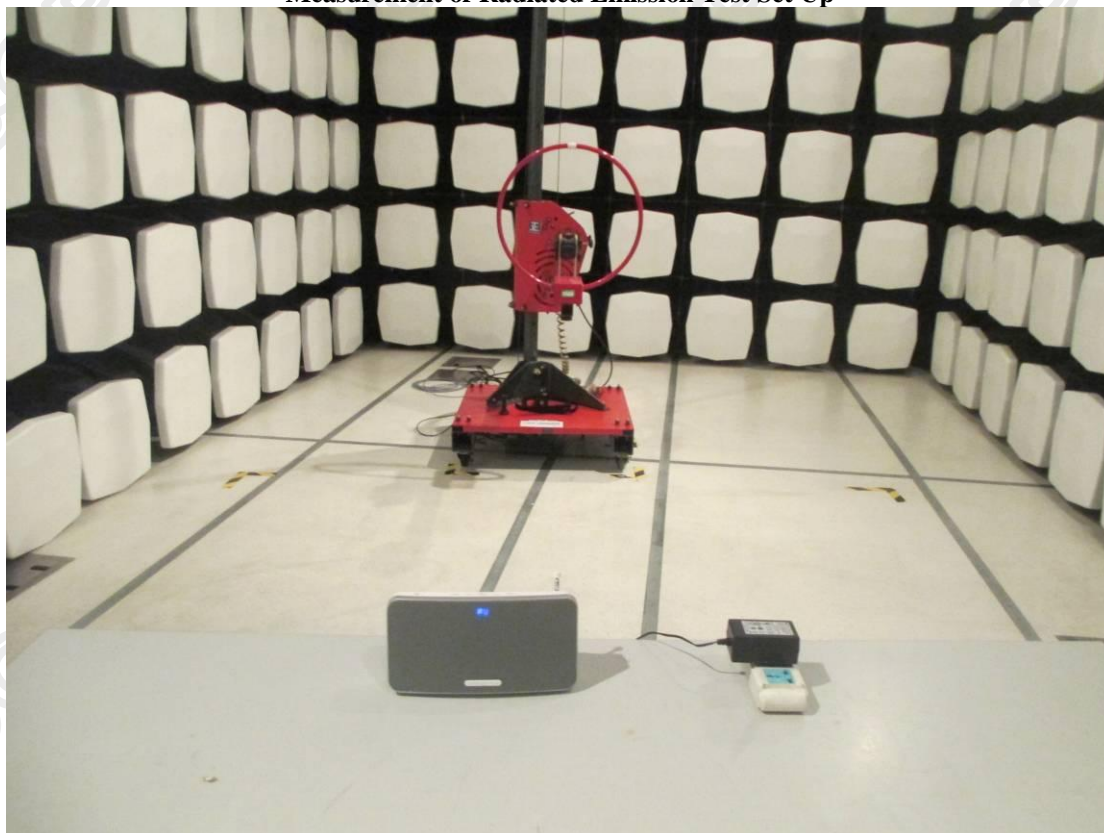
Date: 2014-02-18

Page 38 of 41

No.: DM114112

Photographs of EUT

Measurement of Radiated Emission Test Set Up



The Hong Kong Standards and Testing Centre Ltd.

10 Dai Wang Street, Taipo Industrial Estate, N.T., Hong Kong

Tel: (852) 2666 1888 Fax: (852) 2664 4353 Homepage www.hkstc.org E-mail: hkstc@hkstc.org

This report shall not be reproduced unless with prior written approval from The Hong Kong Standards and Testing Centre Ltd
For Conditions of Issuance of this test report, please refer to the overleaf or Homepage



STC Test Report

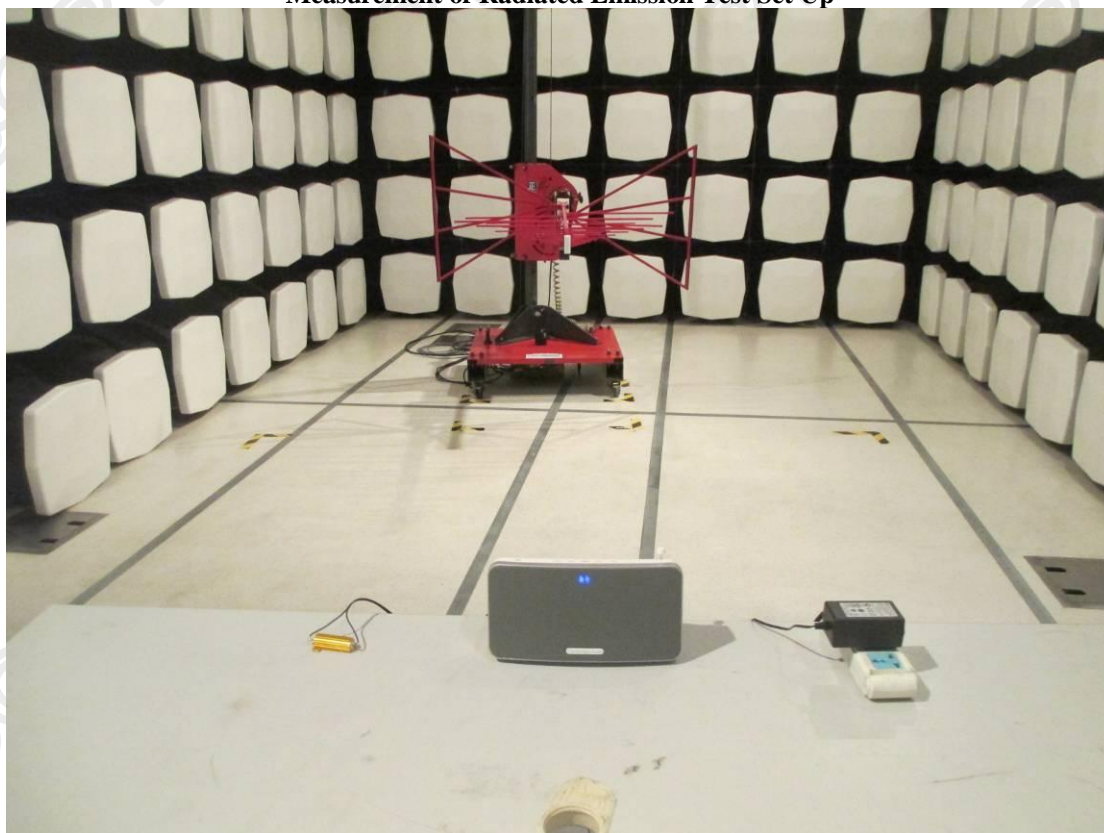
Date: 2014-02-18

Page 39 of 41

No.: DM114112

Photographs of EUT

Measurement of Radiated Emission Test Set Up



The Hong Kong Standards and Testing Centre Ltd.

10 Dai Wang Street, Taipo Industrial Estate, N.T., Hong Kong

Tel: (852) 2666 1888 Fax: (852) 2664 4353 Homepage www.hkstc.org E-mail: hkstc@hkstc.org

This report shall not be reproduced unless with prior written approval from The Hong Kong Standards and Testing Centre Ltd
For Conditions of Issuance of this test report, please refer to the overleaf or Homepage



STC Test Report

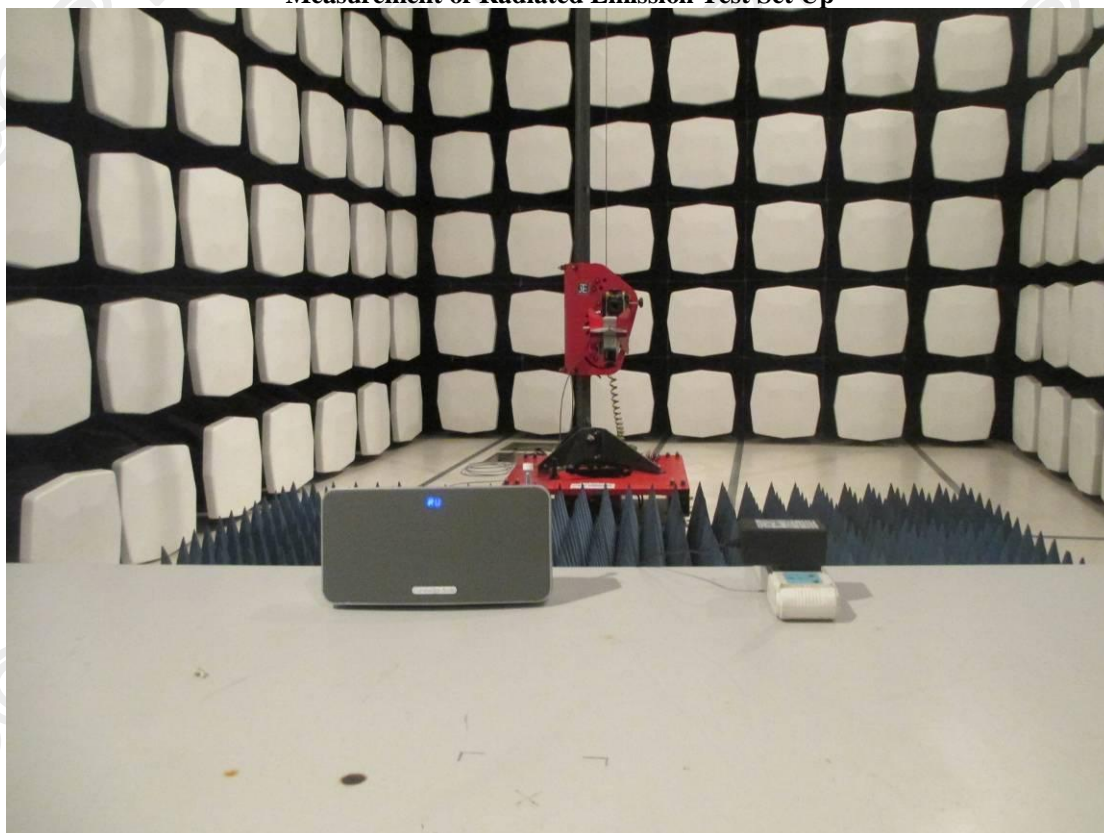
Date: 2014-02-18

Page 40 of 41

No.: DM114112

Photographs of EUT

Measurement of Radiated Emission Test Set Up



The Hong Kong Standards and Testing Centre Ltd.

10 Dai Wang Street, Taipo Industrial Estate, N.T., Hong Kong

Tel: (852) 2666 1888 Fax: (852) 2664 4353 Homepage www.hkstc.org E-mail: hkstc@hkstc.org

This report shall not be reproduced unless with prior written approval from The Hong Kong Standards and Testing Centre Ltd
For Conditions of Issuance of this test report, please refer to the overleaf or Homepage



STC Test Report

Date: 2014-02-18

Page 41 of 41

No.: DM114112

Photographs of EUT

Measurement of Conducted Emission Test Set Up



***** End of Test Report *****

The Hong Kong Standards and Testing Centre Ltd.

10 Dai Wang Street, Taipo Industrial Estate, N.T., Hong Kong

Tel: (852) 2666 1888 Fax: (852) 2664 4353 Homepage www.hkstc.org E-mail: hkstc@hkstc.org

This report shall not be reproduced unless with prior written approval from The Hong Kong Standards and Testing Centre Ltd
For Conditions of Issuance of this test report, please refer to the overleaf or Homepage