

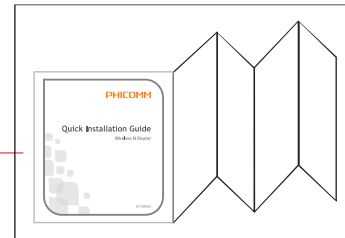
**NOTES(技术要求):**

- 1.装订后尺寸(Dimension after binding): 105\*145 mm.
- 2.印刷颜色(Print colour): 封面(cover): 黑白印刷(colour printing)  
/内页(inner page): 黑色印刷(black printing).
- 3.材质(Material): 封面(cover): 128g铜版纸(128 art paper);  
/内页(inner page):128g铜版纸(128g art paper)
- 4.表面处理(Coating): 无
- 5.装订工艺(Binding process): 折页(saddle stitch) 采用风琴折页方式
- 6.输出网线(Output lpi): 200 lpi.
- 7.公差(Tolerance): L(长)\*W(宽): ±1.0mm.
- 8.材料, 印刷原料, 印刷工艺均能满足RoHS指令及WEEE指令要求.  
(All materials and process technologies should be compliant with RoHS & WEEE).

版本	履历	日期
V1.0	初版发行	2014-06-17

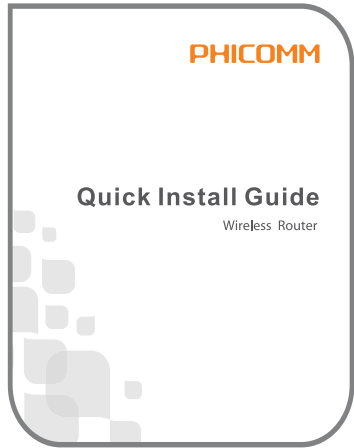


尺寸示意图, 印刷原文件见后



折叠示意图

DIM		TOL±				CUSTOMER: 斐讯	第二工业设计部 THE SECOND INDUSTRIAL DESIGN DEPT.	
RANGE	C1	C2	C3	C4	TITLE: 用户手册		MODEL: FIR302B	PART NO.: 811001889
0-6	0.1	0.1	0.15	0.2	UNIT'S mm	VER: V1.0	DRAW 朱莎莎	2014-06-17
6-30	0.2	0.3	0.4	0.5		SCALE 1:1	CHECK 刘冠宇	2014-06-17
30-80	0.25	0.5	0.9	1.2	MAT'L /	SHEET 1 / 24	APPD 张海斌	2014-06-17
80-180	0.3	0.8	1.2	1.5				
180-315	0.5	1.3	1.8	3	FINISH /	SHEET 1 / 24	APPD 张海斌	2014-06-17
315-500	0.7	1.5	2.5	4				
500-800	0.9	1.8	3	5				
ANG.TOL±		0°-30°/0.1°	30°-60°/0.3°	60°-90°/0.5°				



## Quick Install Guide Wireless Router

### Setup steps

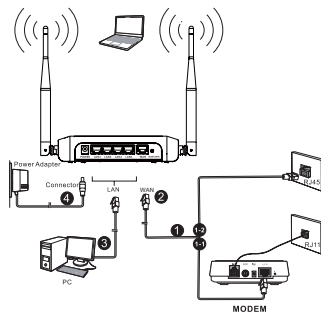
- Hardware Connection
- Wireless Router Settings
- Wireless Connection
- Health and Power Saving
- Appendix

### Note

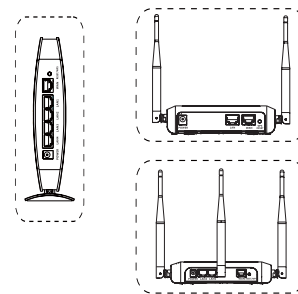
- Ensure that your cable/ADSL modem has been turned off for at least 20 minutes before disconnecting the wires/cables.
- Keep the device away from metal obstructions and away from direct sunlight.
- For optimum performance, please adjust the internal cooling system.

### Hardware Connection

- Method 1: In telephone or fiber optic access case, please connect to the Internet by Modem, follow steps ①-④.
- Method 2: With a direct Ethernet (RJ45) access, please follow steps ②-④.



Please do the connection according to your router illustration.



- Please Power off the Modem for at least 1 minute before connecting to wireless router.
- Confirm that the WLAN light is ON so that client devices can connect to the router correctly.

### Recommend:

- SOHO user choose PPPoE if ISP(Internet Service Provider) provided you a broadband account and password.
- Choose DHCP(Dynamic Host Configuration Protocol) if there is non-parameters provided by ISP, or the Router works as a second Router of your network.
- Choose Static IP if specified network parameter was provided by ISP.
- Set a wireless password (more than 8 chars) to prevent others from accessing your network without permission.

Note: You can keep SSID unchanged, or define SSID to any other name you preferred. (SSID: The abbreviation of The Service Set Identifier, namely, wireless network name.)

### Wireless Connection win7/win8

- Click on the right corner bottom of your computer. Click connection button with your network name.



- Type your wireless password into "Security key" and press OK.



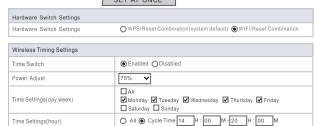
### Health and Power Saving

You can set up a schedule to turn ON/OFF wireless according to your actual needs (such as time to rest, limiting children surfing the Internet, etc.). We can also turn down the power of wireless to enjoy a healthy and power saving environment at the same time.

- Choose "Health and power saving" on the menu.



Note: To make the function working properly, please make sure the Router time has been synchronized with the internet time and a right time zone by pressing "SET AT ONCE".

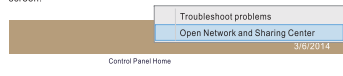


- Hardware Switch Settings:** WPS/Reset is a multifunction key. Click the "Wireless/Reset Combination" to change the short press function from WPS to wireless switch. Then you can easily turn On/Off wireless by just pushing the button. Long press the button until all the lights flashing. Router will return to factory settings.
- Open the "Time Switch" (the default is enabled) to adjust the RF power according to your demand.  
Note: It will impact the performance and coverage of wireless.
- Set expectative time period, including the days and specific hours. Then click save button.

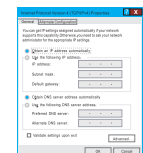
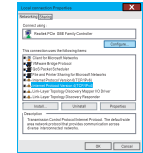
### Appendix(TCP/IP settings to automatically obtain an IP address)

#### win7/win8

- Right click the wireless icon on the right bottom corner, press "Open Network and Sharing Center". Enter "Change adapter settings" on the upper left of the screen.



- Choose a kind of network connection according to your own needs, open "Properties".
- Double click "Internet Protocol Version 4 (TCP/IPv4)".



### FAQ

#### Why can't I open setting page?

- Turn off browser's proxy settings. Ex.IE, you should turn off all the options in tools → connections → LAN Setting.
- Make sure your network card has been set to obtaining an IP automatically.
- Make sure your LAN and wireless light are on and cable is connected correctly.

#### What should I do if the Network name or encryption keys are forgotten?

- Try to set up the wired connection and configuring the wireless encryption again.
- Press the Reset button of the wireless Router for more than five seconds.
- Factory default settings:

Username/Password	admin/admin
IP address	http://192.168.2.1 or http://phicomm.me

#### Why can't I access the Internet via wireless LAN adapter?

- Move the Router closer to the wireless client.
- Check whether the wireless adapter is connected to the correct wireless Router.
- Check whether the wireless channel in use conforms to the channels available in your country/area.
- Retry using another Ethernet cable.
- Check if the ADSL or cable connection is correct.

### Notification of compliance

#### CE 0197

**CE Mark Warning**  
This is a Class B product, in a domestic environment, this product may cause radio interference, in which case the user may be required to take adequate measures Operation Channels: CH1-11 for N. America; CH1-13 for Europe (ETSI).

#### Federal Communications Commission Statement

This device complies with Part 15 of the FCC Rules. Operation is subject to the following two conditions:  
• This device may not cause harmful interference.  
• This device must accept any interference received, including interference that may cause undesired operation.

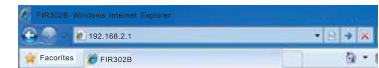
Changes or modifications not expressly approved by the party responsible for compliance could void the user's authority to operate the equipment.  
This equipment has been tested and found to comply with the limits for a class B digital device, pursuant to part 15 of the FCC Rules. These limits are designed to provide reasonable protection against harmful interference in a residential installation.

This equipment generates, uses and can radiate radio frequency energy and, if not installed and used in accordance with the instructions, may cause harmful interference to radio communications. However, there is no guarantee that interference will not occur in a particular installation. If this equipment does cause harmful interference to radio or television reception, which can be determined by turning the equipment off and on, the user is encouraged

### Wireless Router Settings

Before starting this step, you should set your TCP/IP settings to automatically obtain an IP address. For more details, refer the Appendix presented at the end of the guidance.

- Launch your web browser such as Internet Explorer, Firefox, Google Chrome, input 192.168.2.1 in the address bar and enter. If you forget the default IP address, you can enter wireless router settings page by visiting <http://phicomm.me>.



- Choose Language in English at the page type "admin" into both username and password input boxes, then press "Login".



- Choose "WAN Connection Type" according to relevant information offered by ISP.



to try to correct the interference by one or more of the following measures:

- Reorient or relocate the receiving antenna.
  - Increase the separation between the equipment and receiver.
  - Connect the equipment into an outlet on a circuit different from that to which the receiver is connected.
  - Consult the dealer or an experienced radio/TV technician for help.
- FCC Radiation Exposure Statement  
This equipment complies with FCC radiation exposure limits set forth for an uncontrolled environment.  
This equipment should be installed and operated with minimum distance 20cm between the radiator & your body.

### Contact Us

Shanghai Feixun Communication Co., Ltd.			
Tel:	(86-21)67754400	Fax:	(86-21)67754018
Sales:	info@phicomm.com	Support:	service@phicomm.com.cn
Phicomm Europe GmbH			
Address:	Biberger Str. 93, 82008 Unterhaching, Germany		
Tel:	+49 89 6605672-0		
Phicomm Technology (Asia Pacific) Pte Ltd			
Address:	9 Temasek Boulevard, Suntec Tower 2, #22-01, Singapore 038989		
Tel:	+65-3157 8858	Fax:	+65-6509 6949
Sales:	sales@phicomm.com		
Website: <a href="http://www.phicomm.com">http://www.phicomm.com</a>			
Service Centre Address: 1 Rochor Canal Road, Sim Lim Square, #03-02, Singapore 188004			
Support Email: <a href="mailto:tech.support@phicomm.com">tech.support@phicomm.com</a>			
Support Help Line: +65 6336 8613			

Declare: For more instructions about the warranty, please visit our website. (<http://en.phicomm.com/>)