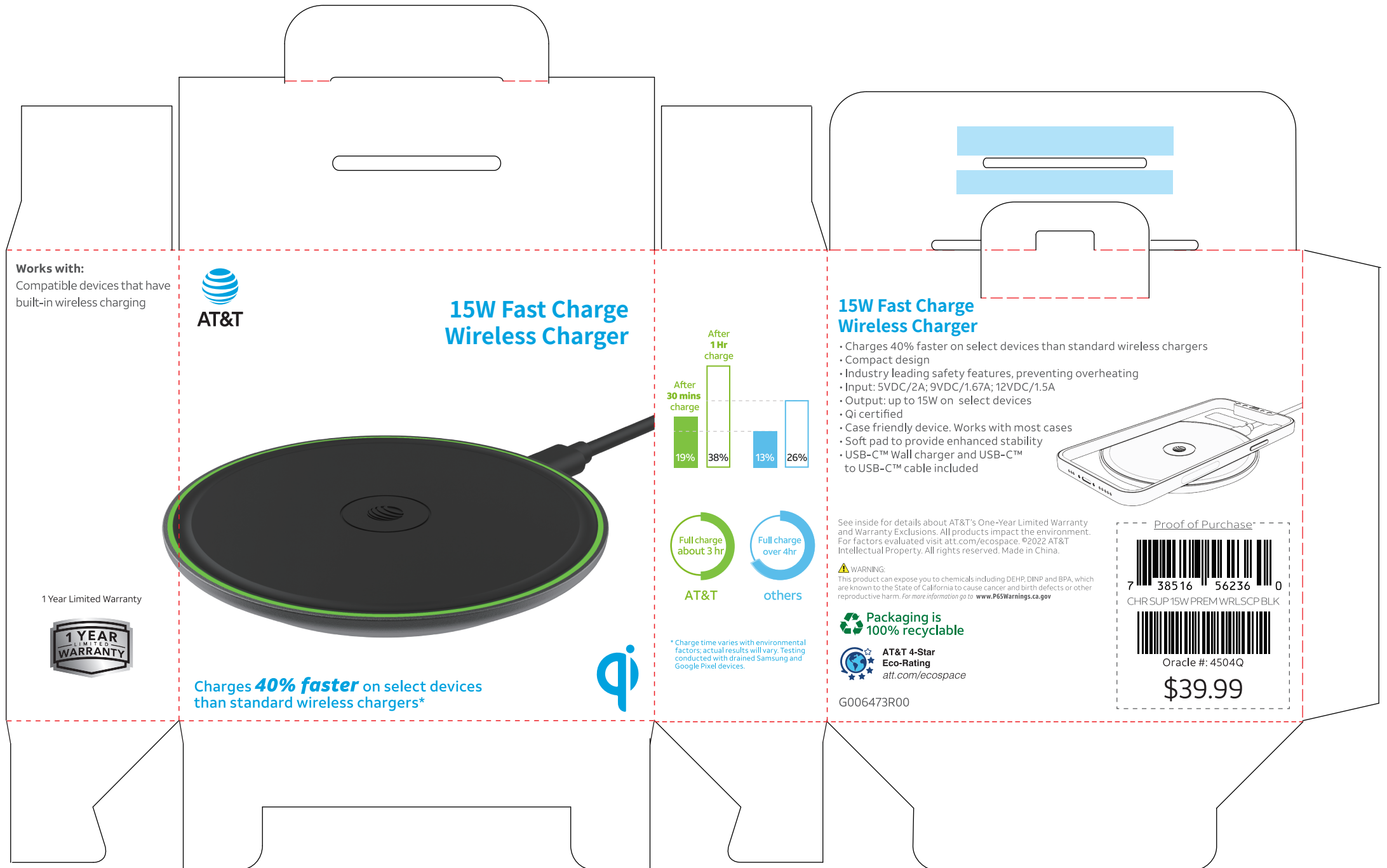


Dieline#: SCPCN0058

ATT 15W Premium Charging Pad

Size:99*36*98mm



Works with:
Compatible devices that have built-in wireless charging



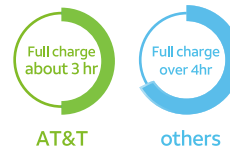
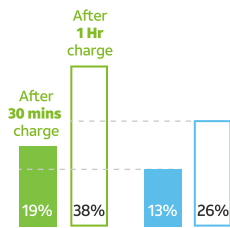
15W Fast Charge Wireless Charger



1 Year Limited Warranty



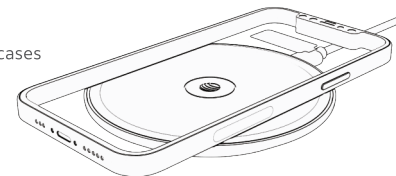
Charges 40% faster on select devices than standard wireless chargers*



* Charge time varies with environmental factors; actual results will vary. Testing conducted with drained Samsung and Google Pixel devices.

15W Fast Charge Wireless Charger

- Charges 40% faster on select devices than standard wireless chargers
- Compact design
- Industry leading safety features, preventing overheating
- Input: 5VDC/2A; 9VDC/1.67A; 12VDC/1.5A
- Output: up to 15W on select devices
- Qi certified
- Case friendly device. Works with most cases
- Soft pad to provide enhanced stability
- USB-C™ Wall charger and USB-C™ to USB-C™ cable included



See inside for details about AT&T's One-Year Limited Warranty and Warranty Exclusions. All products impact the environment. For factors evaluated visit att.com/ecospace. ©2022 AT&T Intellectual Property. All rights reserved. Made in China.

WARNING:
This product can expose you to chemicals including DEHP, DINP and BPA, which are known to the State of California to cause cancer and birth defects or other reproductive harm. For more information go to www.P65Warnings.ca.gov

Packaging is 100% recyclable

AT&T 4-Star Eco-Rating
att.com/ecospace

G006473R00

Proof of Purchase

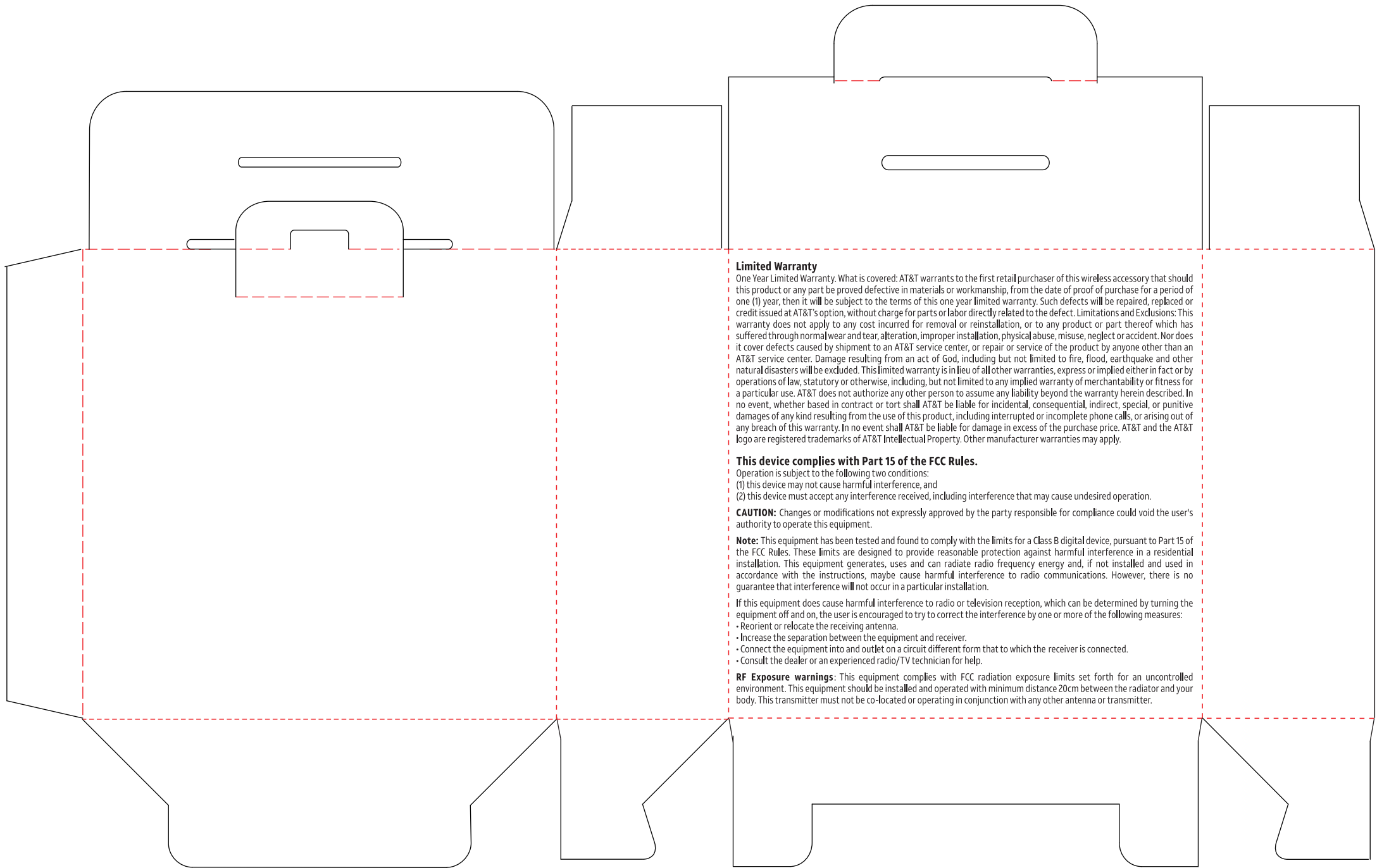


7 38516 56236 0

CHR SUP 15W PREM WRLSCP BLK

Oracle #: 4504Q

\$39.99



Limited Warranty

One Year Limited Warranty. What is covered: AT&T warrants to the first retail purchaser of this wireless accessory that should this product or any part be proved defective in materials or workmanship, from the date of proof of purchase for a period of one (1) year, then it will be subject to the terms of this one year limited warranty. Such defects will be repaired, replaced or credit issued at AT&T's option, without charge for parts or labor directly related to the defect. Limitations and Exclusions: This warranty does not apply to any cost incurred for removal or reinstallation, or to any product or part thereof which has suffered through normal wear and tear, alteration, improper installation, physical abuse, misuse, neglect or accident. Nor does it cover defects caused by shipment to an AT&T service center, or repair or service of the product by anyone other than an AT&T service center. Damage resulting from an act of God, including but not limited to fire, flood, earthquake and other natural disasters will be excluded. This limited warranty is in lieu of all other warranties, express or implied either in fact or by operations of law, statutory or otherwise, including, but not limited to any implied warranty of merchantability or fitness for a particular use. AT&T does not authorize any other person to assume any liability beyond the warranty herein described. In no event, whether based in contract or tort shall AT&T be liable for incidental, consequential, indirect, special, or punitive damages of any kind resulting from the use of this product, including interrupted or incomplete phone calls, or arising out of any breach of this warranty. In no event shall AT&T be liable for damage in excess of the purchase price. AT&T and the AT&T logo are registered trademarks of AT&T Intellectual Property. Other manufacturer warranties may apply.

This device complies with Part 15 of the FCC Rules.

Operation is subject to the following two conditions:

- (1) this device may not cause harmful interference, and
- (2) this device must accept any interference received, including interference that may cause undesired operation.

CAUTION: Changes or modifications not expressly approved by the party responsible for compliance could void the user's authority to operate this equipment.

Note: This equipment has been tested and found to comply with the limits for a Class B digital device, pursuant to Part 15 of the FCC Rules. These limits are designed to provide reasonable protection against harmful interference in a residential installation. This equipment generates, uses and can radiate radio frequency energy and, if not installed and used in accordance with the instructions, may cause harmful interference to radio communications. However, there is no guarantee that interference will not occur in a particular installation.

If this equipment does cause harmful interference to radio or television reception, which can be determined by turning the equipment off and on, the user is encouraged to try to correct the interference by one or more of the following measures:

- Reorient or relocate the receiving antenna.
- Increase the separation between the equipment and receiver.
- Connect the equipment into an outlet on a circuit different from that to which the receiver is connected.
- Consult the dealer or an experienced radio/TV technician for help.

RF Exposure warnings: This equipment complies with FCC radiation exposure limits set forth for an uncontrolled environment. This equipment should be installed and operated with minimum distance 20cm between the radiator and your body. This transmitter must not be co-located or operating in conjunction with any other antenna or transmitter.