



# FCC TEST REPORT

**REPORT NO.:** GUD-14MY0004VNTY

**MODEL NO.:** 303ZTX

**RECEIVED:** May. 5, 2014

**ISSUED:** May. 9, 2014

**APPLICANT:** Guardian Shanghai Corp.

**ADDRESS:** 368, Min Shen Rd, SongJiang, Shanghai, China

**ISSUED BY:** BUREAU VERITAS ADT (Shanghai) Corporation

**ADDRESS:** 2F, Building C, No.1618, Yishan rd., 201103,  
Shanghai, China

This test report consists of 28 pages in total. It may be duplicated completely for legal use with the approval of the applicant. It should not be reproduced except in full, without the written approval of our laboratory. The client should not use it to claim product endorsement by A2LA or any government agencies. The test results in the report only apply to the tested sample. The test results in this report are traceable to the national or international standards. This report contains data that were produced under Laboratory ADT (Shanghai) Corporation.





# Table of Contents

1	CERTIFICATION .....	3
2	SUMMARY OF TEST RESULTS .....	4
2.1	MEASUREMENT UNCERTAINTY .....	4
3	GENERAL INFORMATION .....	5
3.1	GENERAL DESCRIPTION OF EUT .....	5
3.2	DESCRIPTION OF TEST MODES .....	5
3.3	GENERAL DESCRIPTION OF APPLIED STANDARDS .....	7
3.4	DESCRIPTION OF SUPPORT UNITS .....	7
4	EMISSION TEST .....	8
4.1	CONDUCTED EMISSION MEASUREMENT .....	8
4.1.1	LIMITS OF CONDUCTED EMISSION MEASUREMENT .....	8
4.1.2	TEST RESULTS .....	8
4.2	DEACTIVATION TIME .....	9
4.2.1	LIMITS OF DEACTIVATION TIME MEASUREMENT .....	9
4.2.2	TEST INSTRUMENTS .....	9
4.2.3	TEST PROCEDURES .....	9
4.2.4	DEVIATION FROM TEST STANDARD .....	9
4.2.5	TEST SETUP .....	9
4.2.6	TEST RESULTS .....	10
4.3	RADIATED EMISSION MEASUREMENT .....	11
4.3.1	LIMITS OF RADIATED EMISSION MEASUREMENT .....	11
4.3.2	TEST INSTRUMENTS .....	13
4.3.3	TEST PROCEDURE .....	14
4.3.4	DEVIATION FROM TEST STANDARD .....	14
4.3.5	TEST SETUP .....	15
4.3.6	EUT OPERATING CONDITIONS .....	15
4.3.7	TEST RESULTS .....	16
4.4	20DB OCCUPIED BANDWIDTH MEASUREMENT .....	21
4.4.1	LIMITS OF BAND EDGES MEASUREMENT .....	21
4.4.2	TEST INSTRUMENTS .....	21
4.4.3	TEST PROCEDURES .....	22
4.4.4	DEVIATION FROM TEST STANDARD .....	22
4.4.5	TEST SETUP .....	22
4.4.6	TEST RESULTS .....	23
5	PHOTOGRAPHS OF THE TEST CONFIGURATION .....	24
6	PHOTOGRAPHS OF THE EUT .....	25
7	APPENDIX - INFORMATION ON THE TESTING LABORATORY .....	28



# 1 CERTIFICATION

**PRODUCT:** Remote for Garage Door Opener  
**MODEL NO.:** 303ZTX  
**APPLICANT:** Guardian Shanghai Corp.  
**TESTED:** May. 5, 2014~ May. 9, 2014  
**TEST ITEM:** ENGINEERING SAMPLE  
**STANDARDS:** FCC Part 15: 2013,  
 Subpart C (Section 15.209 and 15.231),  
 ANSI C63.4-2003

We, BUREAU VERITAS ADT (Shanghai) Corporation, declare that the equipment above has been tested in our facility and found compliance with the requirement limits of applicable standards. The test record, data evaluation and Equipment Under Test (EUT) configurations represented herein are true and accurate under the standards herein specified.

*Alex Du*

**PREPARED BY :** \_\_\_\_\_ , **DATE:** May. 13, 2014  
 Alex DU  
 Testing Engineer

*Joy zhu*

**TECHNICAL ACCEPTANCE :** \_\_\_\_\_ , **DATE:** May. 13, 2014  
 Joy Zhu  
 Testing Manager

*Yzhu*

**APPROVED BY :** \_\_\_\_\_ , **DATE:** May. 13, 2014  
 Zhaoqian YU  
 Lab Manager



## 2 SUMMARY OF TEST RESULTS

The EUT has been tested according to the following specifications:

APPLIED STANDARD: FCC Part 15, Subpart C			
Standard Paragraph	Test Type	Result	Remarks
15.207	Conducted Emission Test	N/A	Please refer to 4.1.2.
15.231(a)	De-activation Time	PASS	Meet the requirement of limit
15.209 15.231(b)	Radiated Emission Test	PASS	Minimum passing margin is -16.44 dB at 869.05 MHz
15.231(c)	20dB Occupied Bandwidth Measurement	PASS	Meet the requirement of limit

### 2.1 MEASUREMENT UNCERTAINTY

Where relevant, the following measurement uncertainty levels have been estimated for tests performed on the EUT as specified in CISPR 16-4:

Measurement		Value
Conducted emissions		2.55 dB
Conducted emissions at telecom port		2.60 dB
Radiated emissions	30 MHz ~ 1GHz	3.22 dB
	Above 1GHz	2.89 dB



### 3 GENERAL INFORMATION

#### 3.1 GENERAL DESCRIPTION OF EUT

<b>PRODUCT</b>	Remote for Garage Door Opener
<b>MODEL NO.</b>	303ZTX
<b>POWER SUPPLY</b>	12Vdc by battery
<b>MODULATION TYPE</b>	ASK
<b>CARRIER FREQUENCY OF EACH CHANNEL</b>	303MHz
<b>NUMBER OF CHANNEL</b>	1
<b>ANTENNA TYPE</b>	Soldered on PCB
<b>DATA CABLE SUPPLIED</b>	N/A
<b>I/O PORTS</b>	N/A

**NOTE:** The above EUT information was declared by manufacturer and for more detailed features description, please refer to the manufacturer's specifications or User's Manual.

#### 3.2 DESCRIPTION OF TEST MODES

<b>Test Mode</b>	<b>Description</b>
1	Make sure EUT work in the operation mode.

One channel is provided to this EUT:

<b>Channel</b>	<b>Frequency</b>
1	303MHz



**TEST MODE APPLICABILITY AND TESTED CHANNEL DETAIL:**

EUT configure mode	Applicable to				Description
	PLC	De-a T	RE	20dB OBM	
A	-	√	√	√	Continuously transmitting

Where PLC: Power Line Conducted Emission  
 RE: Radiated Emission

De-a T: De-activation Time  
 20dB OBM: 20dB Occupied Bandwidth Measurement

**Radiated Emission Test:**

- Pre-Scan has been conducted to determine the worst-case mode from all possible combinations between available modulations, and X.Y.Z. axis.
- Following channel(s) was (were) selected for the final test as listed below.

Available Channel	Tested Channel	Modulation Type	Axis
1	1	ASK	X



### 3.3 GENERAL DESCRIPTION OF APPLIED STANDARDS

The EUT is a remote switching. According to the specifications of the manufacturer, it must comply with the requirements of the following standards:

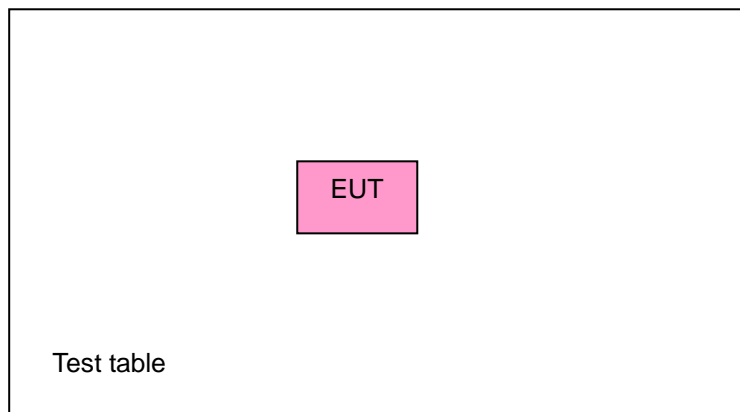
**FCC Part 15, Subpart C. (15.231)**

**ANSI C63.4- 2003**

All test items have been performed and recorded as per the above standards.

### 3.4 DESCRIPTION OF SUPPORT UNITS

The EUT has been tested as an independent unit.



**Note:** When doing the test, fresh batteries were used.



## 4 EMISSION TEST

### 4.1 CONDUCTED EMISSION MEASUREMENT

#### 4.1.1 LIMITS OF CONDUCTED EMISSION MEASUREMENT

FREQUENCY (MHz)	Quasi-peak	Average
0.15 - 0.5	66 - 56	56 - 46
0.50 - 5.0	56	46
5.0 - 30.0	60	50

- NOTES:** 1. The lower limit shall apply at the transition frequencies.  
 2. The limit decreases in line with the logarithm of the frequency in the range of 0.15 to 0.50 MHz.

#### 4.1.2 TEST RESULTS

Since the EUT is powered by battery, the report doesn't require for conduct emission test.





## 4.2 DEACTIVATION TIME

### 4.2.1 LIMITS OF DEACTIVATION TIME MEASUREMENT

**TEST STANDARD:**

**FCC Part 15: 2011, Subpart C (Section: 15.231(a))**

A manually operated transmitter shall employ a switch that will automatically deactivate the transmitter within not more than 5 seconds of being released.

### 4.2.2 TEST INSTRUMENTS

Description & Manufacturer	Model No.	Serial No.	Calibrated Until
Spectrum Analyzer ROHDE & SCHWARZ	FSP	E1S1002	Aug. 15, 2014
BILOG Antenna SCHWARZBECK	VULB9168	E1A1001	Apr. 15, 2015

**NOTE:** The calibration interval of the above test instruments is 12 months.

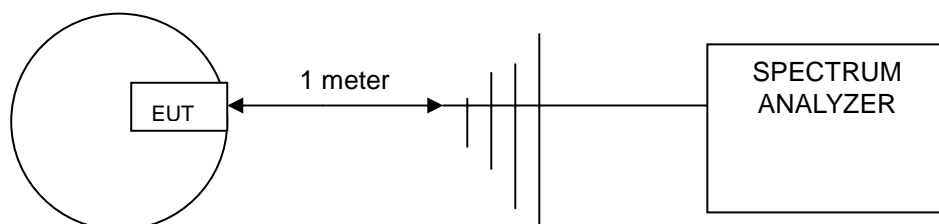
### 4.2.3 TEST PROCEDURES

- 1 The EUT was placed on the turning table.
- 2 The signal was coupled to the spectrum analyzer through an antenna.
- 3 The transmission duration was measured and recorded.

### 4.2.4 DEVIATION FROM TEST STANDARD

No deviation.

### 4.2.5 TEST SETUP



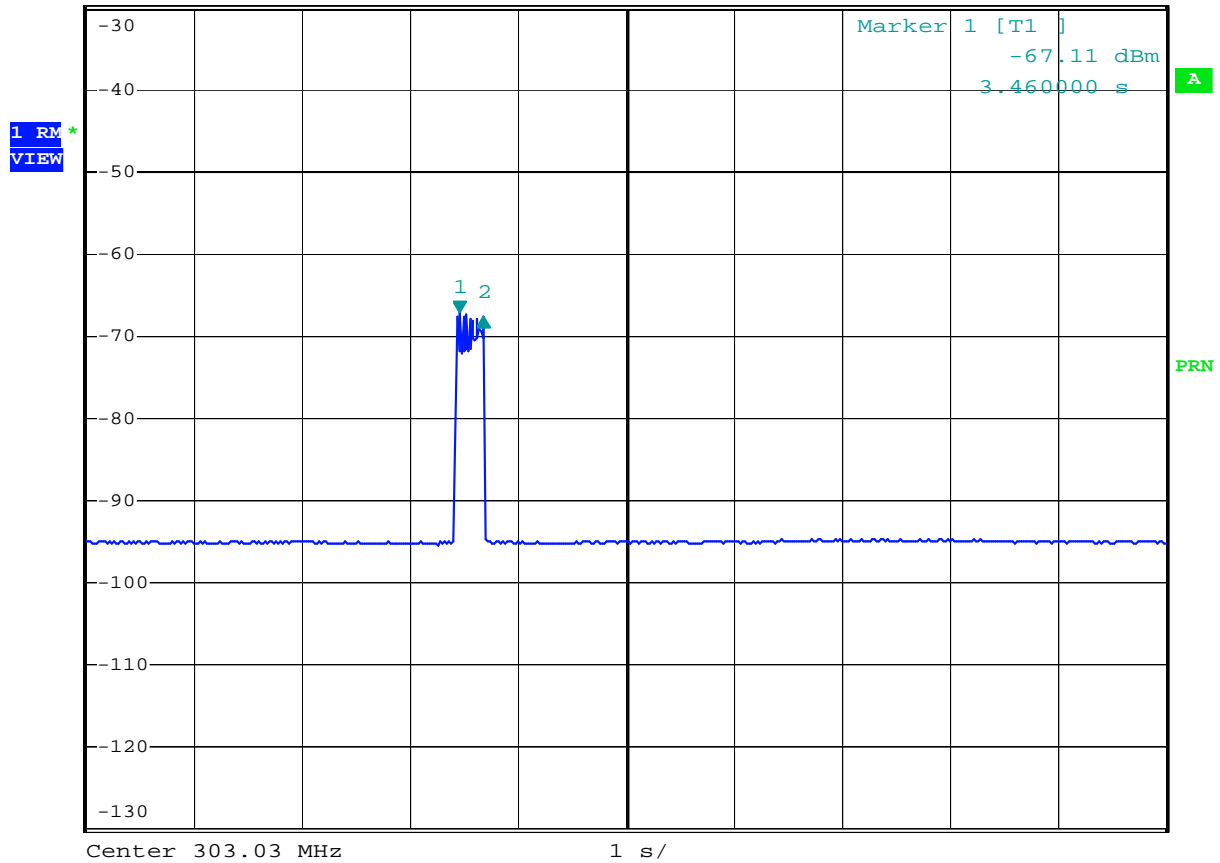


### 4.2.6 TEST RESULTS

Frequency (MHz)	Transmission duration (sec)	Maximum limit (sec)	Pass / Fail
303	0.220	5	Pass



RBW 100 kHz Delta 2 [T1 ]  
 \*VBW 300 kHz -0.49 dB  
 Ref -30 dBm Att 10 dB SWT 10 s 220.000000 ms



Date: 1.JAN.2000 01:04:36



### 4.3 RADIATED EMISSION MEASUREMENT

#### 4.3.1 LIMITS OF RADIATED EMISSION MEASUREMENT

**TEST STANDARD:**

**FCC Part 15: 2013, Subpart C (Section: 15.205)**

**FCC Part 15: 2013, Subpart C (Section: 15.209)**

**FCC Part 15: 2013, Subpart C (Section: 15.231(b))**

According to 15.231 the field strength of emissions from intentional radiators operated under these frequencies bands shall not exceed the following:

Fundamental Frequency (MHz)	Field Strength of Fundamental		Field Strength of Spurious	
	uV/meter	dBuV/meter	uV/meter	dBuV/meter
40.66 – 40.70	2250	67.04	225	48.04
70 – 130	1250	61.94	125	41.94
130 – 174	1250 to 3750	61.94 to 71.48	125 to 375	41.94 to 51.48
174 – 260	3750	71.48	75	37.50
260 – 470	3750 to 12500	71.48 to 81.94	375 to 1250	51.48 to 61.94
Above 470	12500	81.94	1250	61.94

**NOTE:**

- (1) Where F is the frequency in MHz, the formula for calculating the maximum permitted fundamental field strengths are as follows: for the band 130-174 MHz, uV/m at 3 meters = 56.81818(F)-6136.3636; for the band 260-470 MHz, uV/m at 3 meters = 41.6667(F)- 7083.3333. The maximum permitted unwanted emission level is 20 dB below the maximum permitted fundamental level.
- (2) The above field strength limits are specified at a distance of 3meters. The tighter limits apply at the band edges.



Emissions radiated outside of the specified bands, shall be according to the general radiated limits in 15.209 as following:

<b>Frequencies (MHz)</b>	<b>Field strength (microvolts/meter)</b>	<b>Measurement distance (meters)</b>
0.009-0.490	2400/F(kHz)	300
0.490-1.705	24000/F(kHz)	30
1.705-30.0	30	30
30-88	100	3
88-216	150	3
216-960	200	3
Above 960	500	3

As shown in 15.35(b), for frequencies above 1000MHz, the field strength limits are based on average detector, however, the peak field strength of any emission shall not exceed the maximum permitted average limits, specified above by more than 20dB under any condition of modulation.

#### FREQUENCY RANGE OF RADIATED MEASUREMENT

(For intentional radiators)

If the intentional radiator operates below 10 GHz: to the tenth harmonic of the highest fundamental frequency or to 40 GHz, whichever is lower.



### 4.3.2 TEST INSTRUMENTS

DESCRIPTION & MANUFACTURER	MODEL NO.	SERIAL NO.	CALIBRATED UNTIL
Test Receiver ROHDE & SCHWARZ	ESCS30	E1R1001	Apr. 15, 2015
BILOG Antenna SCHWARZBECK	VULB9168	E1A1001	Apr. 27, 2015
Preamplifier Agilent	8447D	E1A2001	Apr. 15, 2015
Preamplifier Agilent	8449B	E1A2002	Apr. 15, 2015
Double Ridged Broadband Horn Antenna Schwarzbeck	BBHA 9120D	E1A1002	Sep. 08, 2014
*Spectrum Analyzer Agilent	E4403B	E1S1001	Aug. 14, 2014
*Spectrum Analyzer ROHDE & SCHWARZ	FSP	E1S1002	Aug. 15, 2014
Software ADT	ADT_Radiated_V7.5	N/A	N/A

- NOTE:**
1. The calibration interval of the above test instruments is 12 months.
  2. "\*" = These equipment are used for the final measurement.
  3. The horn antenna and HP preamplifier (model: 8449B) are used only for the measurement of emission frequency above 1GHz if tested.
  4. The Spectrum Analyzer (model: FSP) is used only for the measurement of emission frequency above 1GHz if tested.



### 4.3.3 TEST PROCEDURE

- a. The EUT was placed on the top of a rotating table 0.8 meters above the ground at a 3 meter semi-anechoic chamber. The table was rotated 360 degrees to determine the position of the highest radiation.
- b. The EUT was set 3 meters away from the interference-receiving antenna, which was mounted on the top of a variable-height antenna tower.
- c. The antenna is a broadband antenna, and its height is varied from one meter to four meters above the ground to determine the maximum value of the field strength. Both horizontal and vertical polarizations of the antenna are set to make the measurement.
- d. For each suspected emission, the EUT was arranged to its worst case and then the antenna was tuned to heights from 1 meter to 4 meters and the rotatable table was turned from 0 degrees to 360 degrees to find the maximum reading.
- e. The test-receiver system was set to Peak Detect Function and Specified Bandwidth with Maximum Hold Mode.

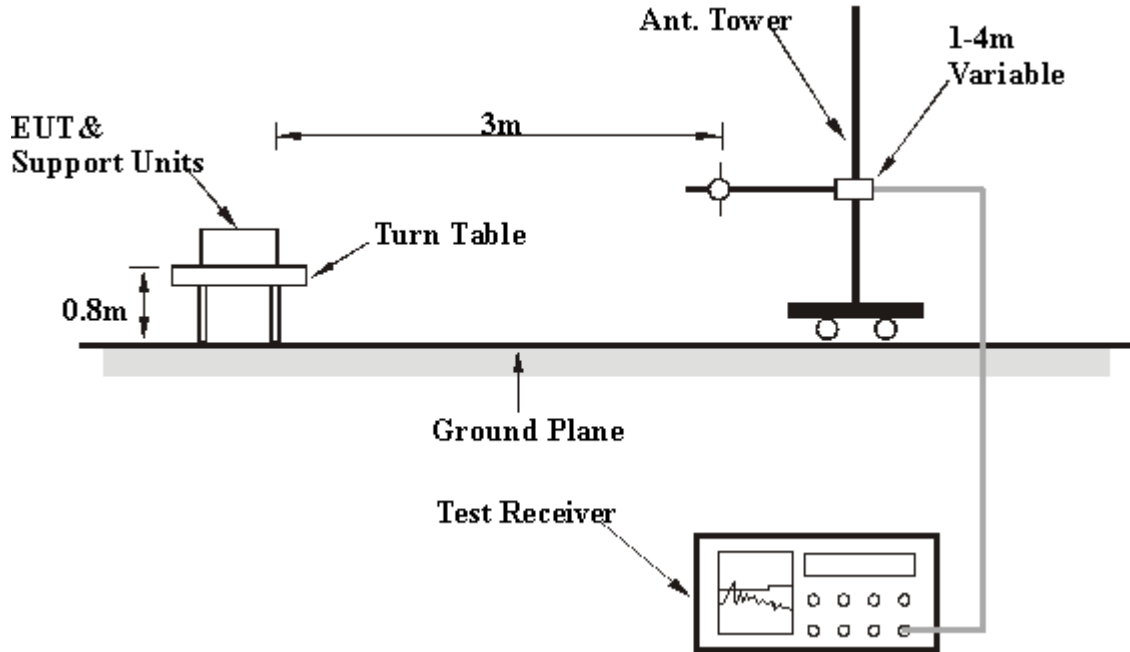
**NOTE:**

1. The resolution bandwidth of test receiver/spectrum analyzer is 120kHz for Peak detection (PK) and Quasi-peak detection at frequency below 1GHz.
2. The resolution bandwidth of test receiver/spectrum analyzer is 1 MHz for Peak detection (PK) at frequency above 1GHz.

### 4.3.4 DEVIATION FROM TEST STANDARD

No deviation.

### 4.3.5 TEST SETUP



For the actual test configuration, please refer to the related Item – Photographs of the Test Configuration.

### 4.3.6 EUT OPERATING CONDITIONS

Set the transmitter part of EUT under transmission condition continuously at specific channel frequency.



### 4.3.7 TEST RESULTS

Below 1GHz Worst-Case Data

<b>EUT</b>	Remote for Garage Door Opener	<b>MODEL NO.</b>	303ZTX
<b>CHANNEL</b>	Channel 1	<b>FREQUENCY RANGE</b>	30 ~ 1000 MHz
<b>MODULATION TYPE</b>	ASK	<b>INPUT POWER (SYSTEM)</b>	12Vdc by battery
<b>ENVIRONMENTAL CONDITIONS</b>	23 deg. C, 50% RH, 1000 hPa	<b>DETECTOR FUNCTION</b>	Quasi-Peak/Peak/Average
<b>TESTED BY</b>	Bing YE		

<b>ANTENNA POLARITY &amp; TEST DISTANCE: HORIZONTAL AT 3 M</b>								
No.	Freq. (MHz)	Factor (dB/M)	Reading (dBuV/M)	Emission (dBuV/M)	Limit (dBuV/M)	Margin (dB)	Ant. Height (cm)	Table Angle (Deg.)
1	158.53QP	14.31	2.16	16.47	43.50	-27.03	200	225
2*	304.02PK	14.63	39.61	54.24	94.9	-40.66	--	--
2*	304.02AV	14.63	30.22	44.85	74.9	-30.05	--	--
3	391.32QP	16.90	3.04	19.94	46.00	-26.06	200	188
4	512.58QP	19.74	1.99	21.73	46.00	-24.27	200	158
5	648.37QP	23.14	2.04	25.18	46.00	-20.82	200	186
6	607.15PK	22.64	15.11	37.75	74.9	-37.15	--	--
6	607.15AV	22.64	5.72	28.36	54.9	-26.54	--	--
7	769.62QP	25.54	2.27	27.81	46.00	-18.19	200	187
8	869.05QP	26.60	2.96	29.56	46.00	-16.44	200	125
9	903.00PK	26.40	7.28	33.68	74.9	-41.22	--	--
9	903.00AV	26.40	-2.11	24.29	54.9	-30.61	--	--





ANTENNA POLARITY & TEST DISTANCE: VERTICAL AT 3 M								
No.	Freq. (MHz)	Factor (dB/M)	Reading (dBuV/M)	Emission (dBuV/M)	Limit (dBuV/M)	Margin (dB)	Ant. Height (cm)	Table Angle (Deg.)
1	148.82QP	14.45	2.12	16.57	43.50	-26.93	100	112
2*	304.02PK	14.63	25.63	40.26	94.9	-54.64	--	--
2*	304.02AV	14.63	16.24	30.87	74.9	-44.03	--	--
3	425.27QP	17.93	2.93	20.86	46.00	-25.14	100	199
4	544.10QP	20.85	1.81	22.66	46.00	-23.34	100	103
5	607.15PK	22.64	6.76	29.39	74.9	-45.51	--	--
5	607.15AV	22.64	-2.64	20.00	54.9	-34.9	--	--
6	701.73QP	24.11	2.34	26.45	46.00	-19.55	100	140
7	801.15QP	26.15	2.04	28.19	46.00	-17.81	100	148
8	866.62QP	26.57	2.24	28.81	46.00	-17.19	100	154
9	903.00PK	26.40	6.52	32.92	74.9	-41.98	--	--
9	903.00AV	26.40	-2.87	23.53	54.9	-31.37	--	--

- NOTE:** 1. Emission level (dBuV/m) = Raw Value (dBuV) + Correction Factor (dB)  
 2. Correction Factor (dB) = Antenna Factor (dB) + Cable Factor (dB)  
 3. The other emission levels were very low against the limit.  
 4. Margin value = Emission level – Limit value.  
 5. "\*" = Fundamental frequency  
 6. The average value of fundamental frequency and spurious emission is: Average = Peak value + 20log(Duty cycle)  
 Where the duty factor is calculated from following formula:

$$20\log(\text{Duty cycle}) = 20\log \frac{(0.32 \times 21 + 0.8 \times 34)\text{ms}}{100\text{ms}} = -9.39\text{dB}$$

please see page 19,20 for plotted duty



Above 1GHz Worst-Case Data

<b>EUT</b>	Remote for Garage Door Opener	<b>MODEL NO.</b>	303ZTX
<b>CHANNEL</b>	Channel 1	<b>FREQUENCY RANGE</b>	1 GHz~3.03 GHz
<b>MODULATION TYPE</b>	ASK	<b>INPUT POWER (SYSTEM)</b>	12Vdc by battery
<b>ENVIRONMENTAL CONDITIONS</b>	23 deg. C, 50% RH, 1000 hPa	<b>DETECTOR FUNCTION</b>	Peak/Average
<b>TESTED BY</b>	Bing YE		

Frequency(MHz)		PK Emission (dBuV/m)	PK limit (dBuV/m)	PK margin (dBuV/m)	AV EMISSION	AV LIMIT	AV MARGIN
1212.00	H	39.74	74	-34.26	30.35	54	-23.65
	V	39.94	74	-34.06	30.55	54	-23.45
1515.00	H	41.38	74	-32.62	31.99	54	-22.01
	V	42	74	-32.00	32.61	54	-21.39
1818.00	H	40.47	74	-33.53	31.08	54	-22.92
	V	40.56	74	-33.44	31.17	54	-22.83
2121.00	H	43.77	74	-30.23	34.38	54	-19.62
	V	43.64	74	-30.36	34.25	54	-19.75
2424.00	H	43.82	74	-30.18	34.43	54	-19.57
	V	44.55	74	-29.45	35.16	54	-18.84
2727.00	H	43.75	74	-30.25	34.36	54	-19.64
	V	44.35	74	-29.65	34.96	54	-19.04

- NOTE:** 1. Emission level (dBuV/m) =Raw Value (dBuV) + Correction Factor (dB)  
 2. Correction Factor (dB) = Antenna Factor (dB) + Cable Factor (dB)  
 3. The other emission levels were very low against the limit.  
 4. Margin value = Emission level – Limit value.  
 5. “\*” = Fundamental frequency  
 6. The average value of fundamental frequency and spurious emission is: Average = Peak value + 20log(Duty cycle)

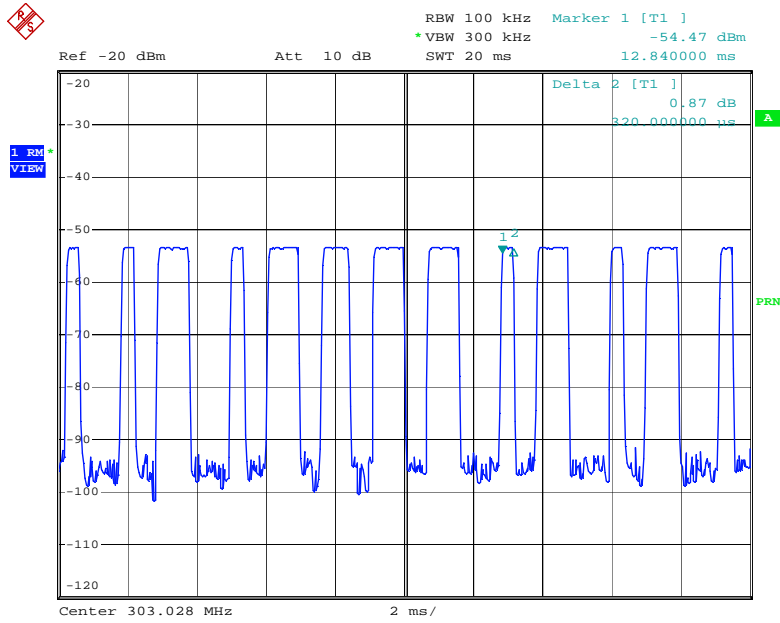
Where the duty factor is calculated from following formula:

$$20\log(\text{Duty cycle}) = 20\log \frac{(0.32*21+0.8*34)\text{ms}}{100\text{ms}} = -9.39\text{dB}$$

please see page 19,20 for plotted duty

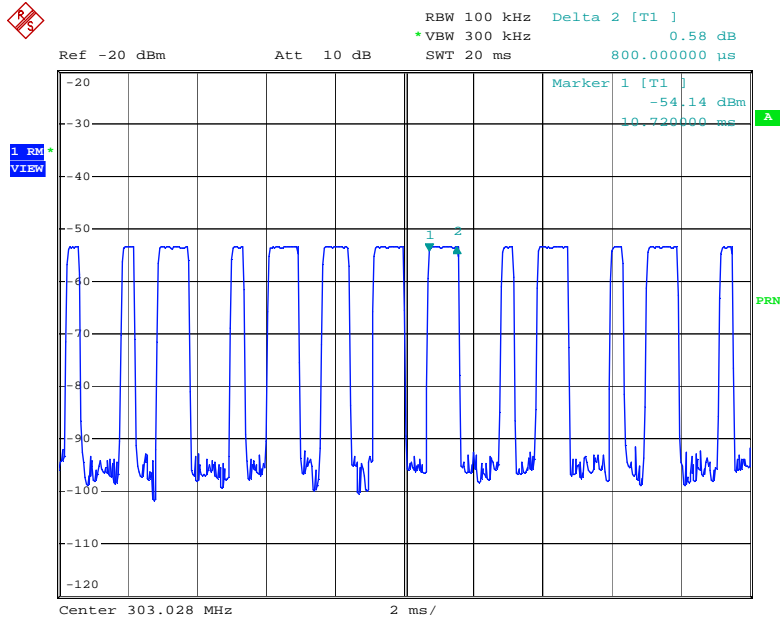


20ms-1



Date: 1.JAN.2000 01:08:09

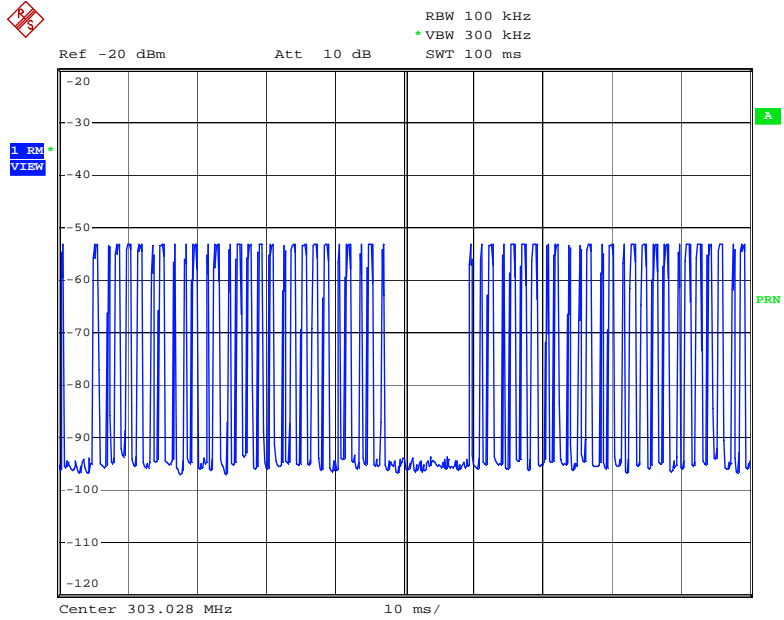
20ms-2



Date: 1.JAN.2000 01:08:45



100ms



Date: 1.JAN.2000 01:06:37



## 4.4 20DB OCCUPIED BANDWIDTH MEASUREMENT

### 4.4.1 LIMITS OF BAND EDGES MEASUREMENT

**TEST STANDARD:**

**FCC Part 15: 2011, Subpart C (Section: 15.231(C))**

The bandwidth of the emission shall be no wider than 0.25% of the center frequency for device operating above 70 MHz and below 900 MHz.

Fundamental Frequency (MHz)	Limit of 20 dB Bandwidth(kHz)
303	757.50

### 4.4.2 TEST INSTRUMENTS

Description & Manufacturer	Model No.	Serial No.	Calibrated Until
SIGNAL ANALYZER Rohde & Schwarz	FSP	E1S1002	Aug. 15, 2014
BILOG Antenna SCHWARZBECK	VULB9168	E1A1001	Apr. 27, 2015

**NOTE:** The calibration interval of the above test instruments is 12 months.

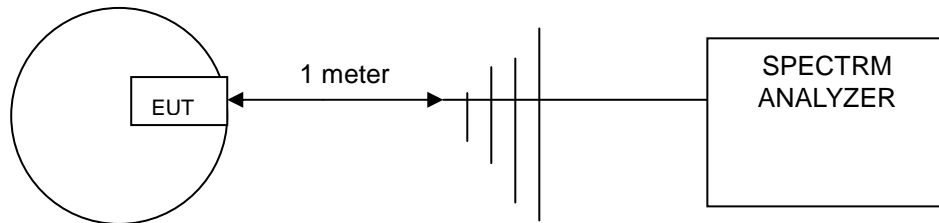
### 4.4.3 TEST PROCEDURES

1. The EUT was placed on the turning table.
2. The signal was coupled to the spectrum analyzer through an antenna.
3. Set the resolution bandwidth to 100 kHz and video bandwidth to 300 kHz then select Peak function to scan the channel frequency.
4. The 20dB bandwidth was measured and recorded.

### 4.4.4 DEVIATION FROM TEST STANDARD

No deviation.

### 4.4.5 TEST SETUP

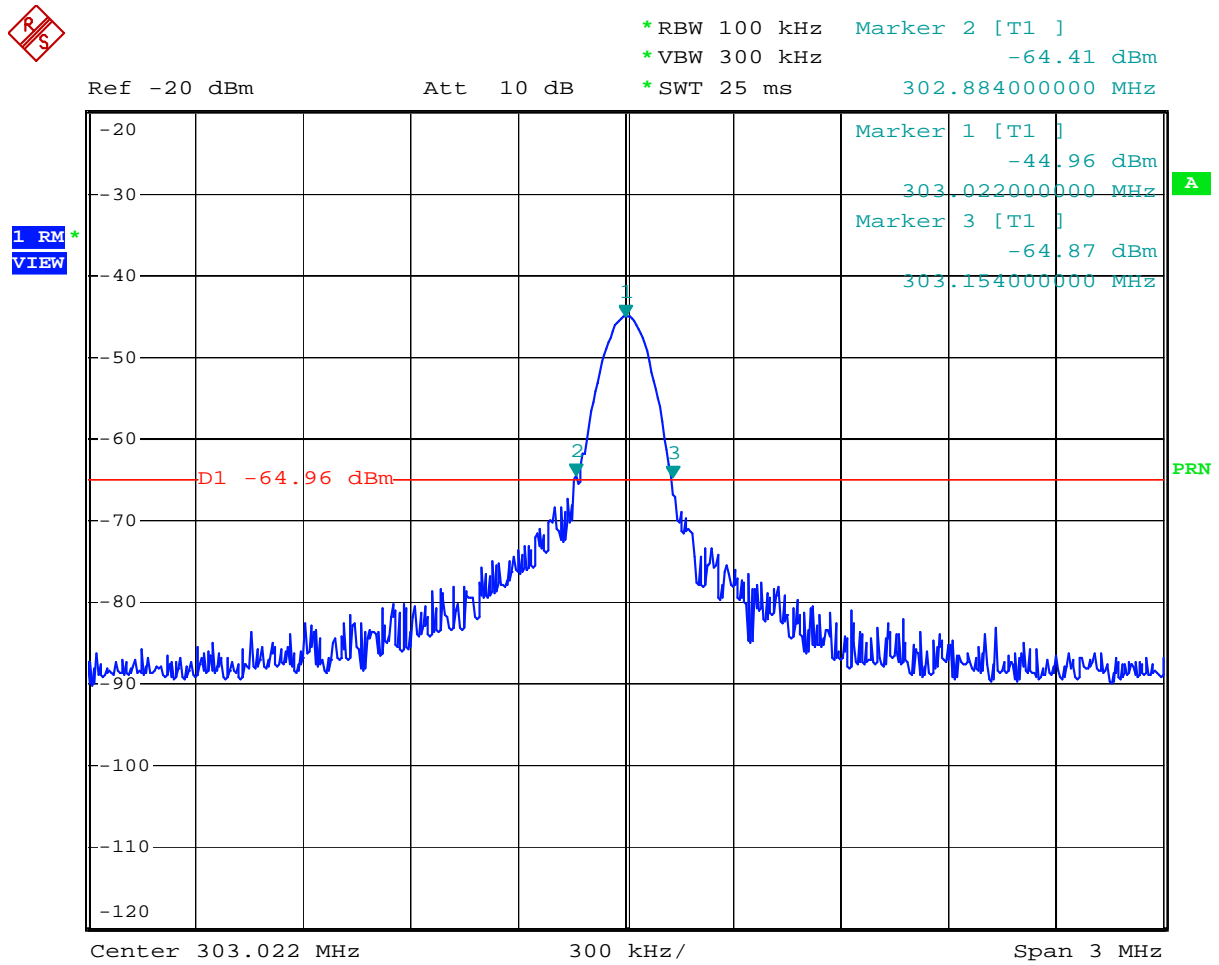




### 4.4.6 TEST RESULTS

Frequency (MHz)	20 dB bandwidth (kHz)	Maximum limit (kHz)	Pass / Fail
303	270	757.50	Pass

The plot of test result is attached as below.



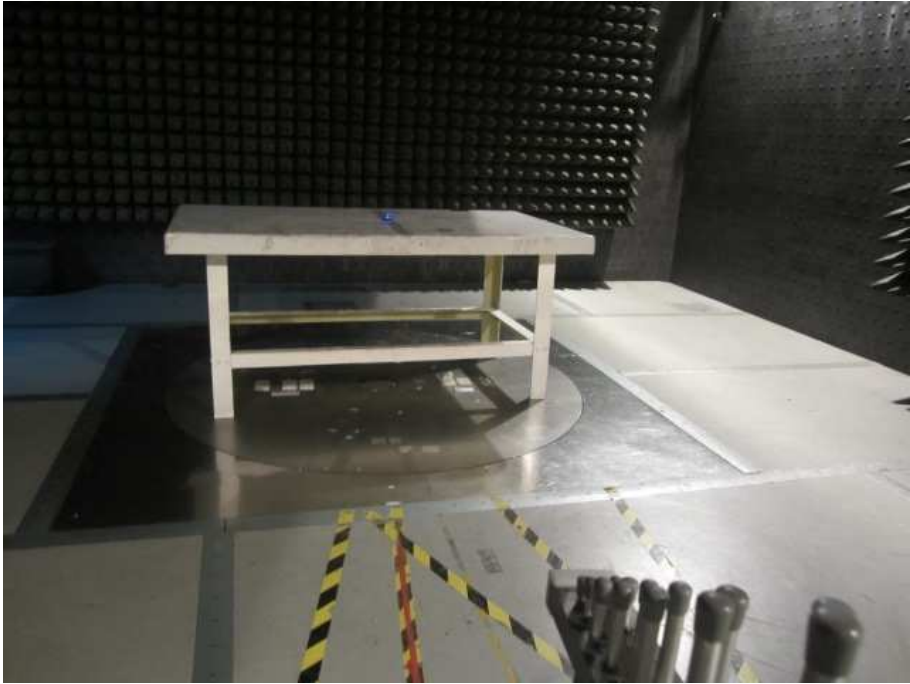
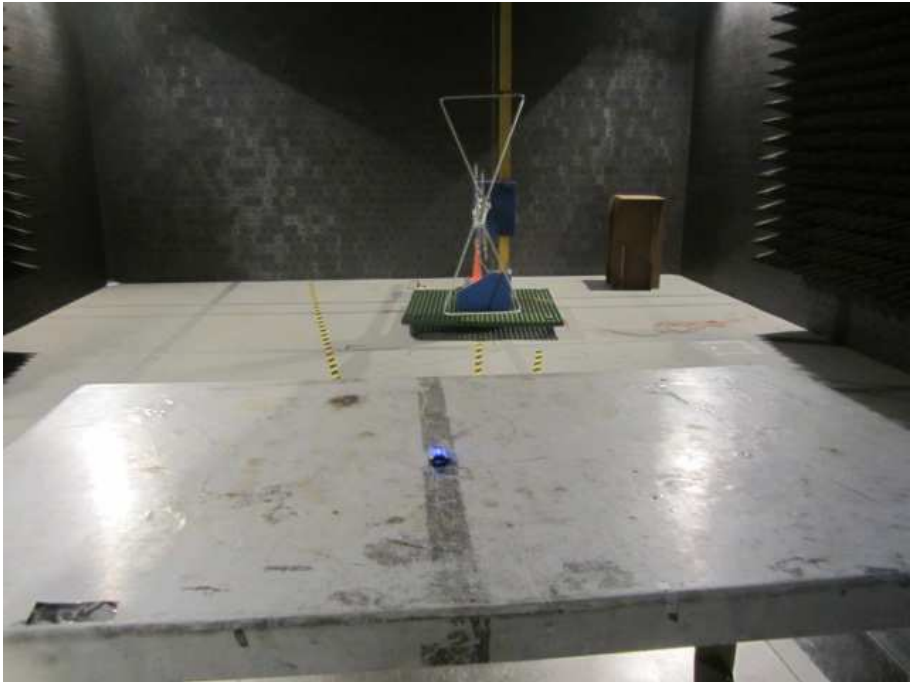
Date: 1.JAN.2000 01:13:59

**Note:**

20 dB bandwidth=(Maker 2 - Maker 3)= 303.154MHz-302.884MHz=270 KHz



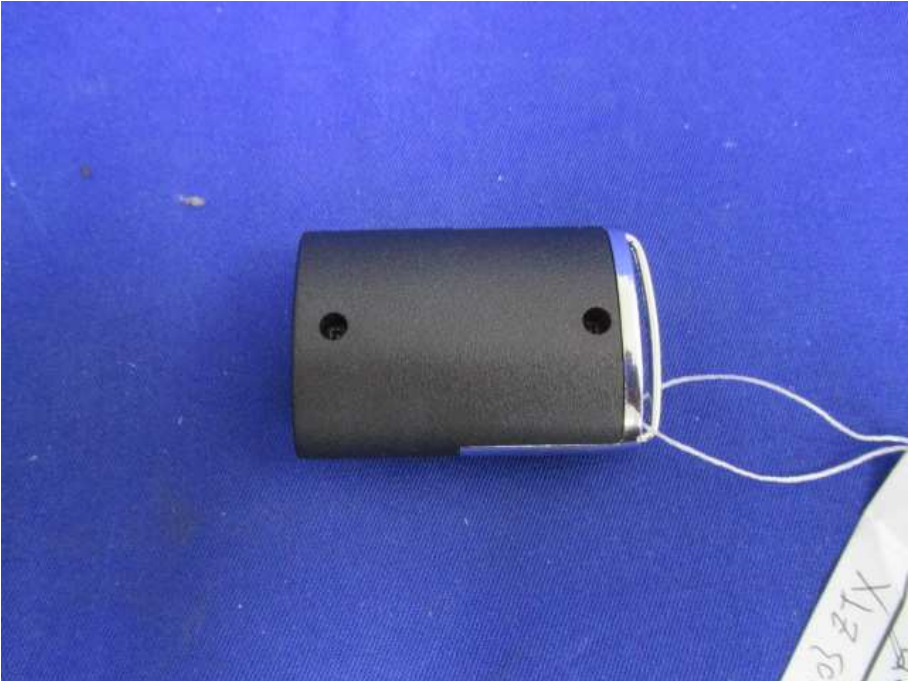
**5 PHOTOGRAPHS OF THE TEST CONFIGURATION**

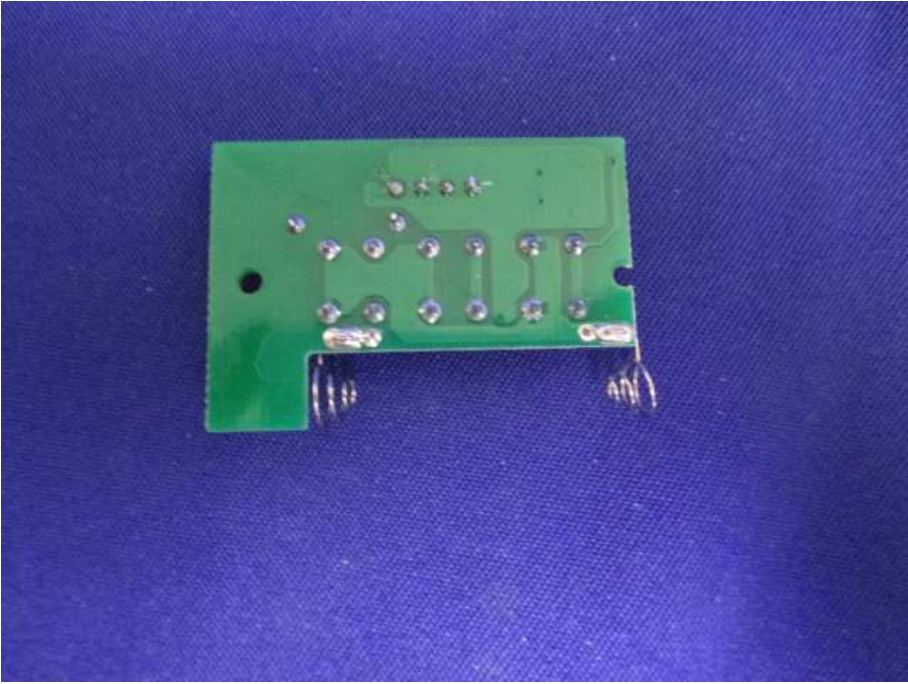
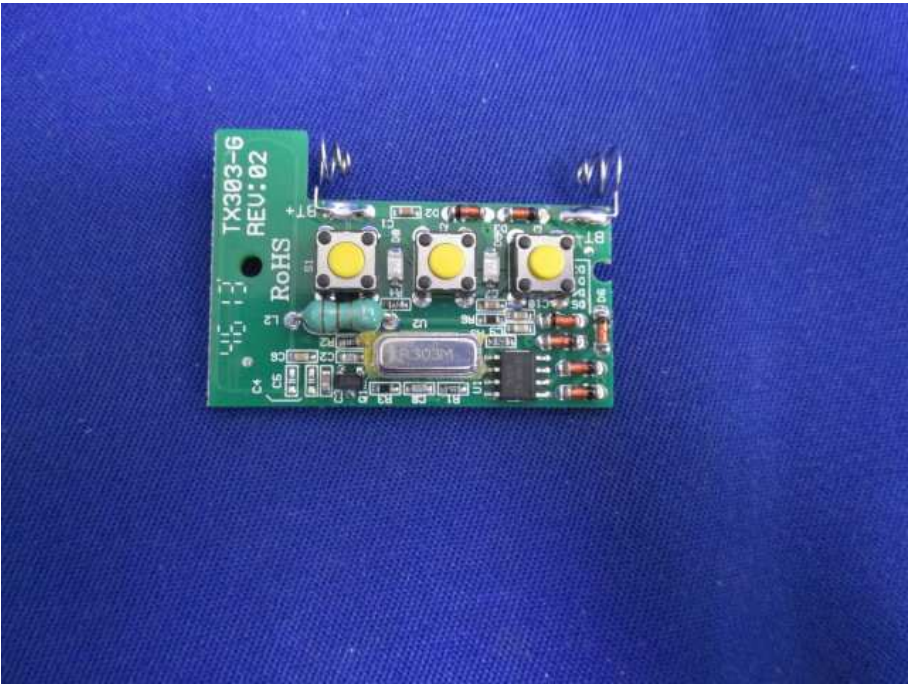


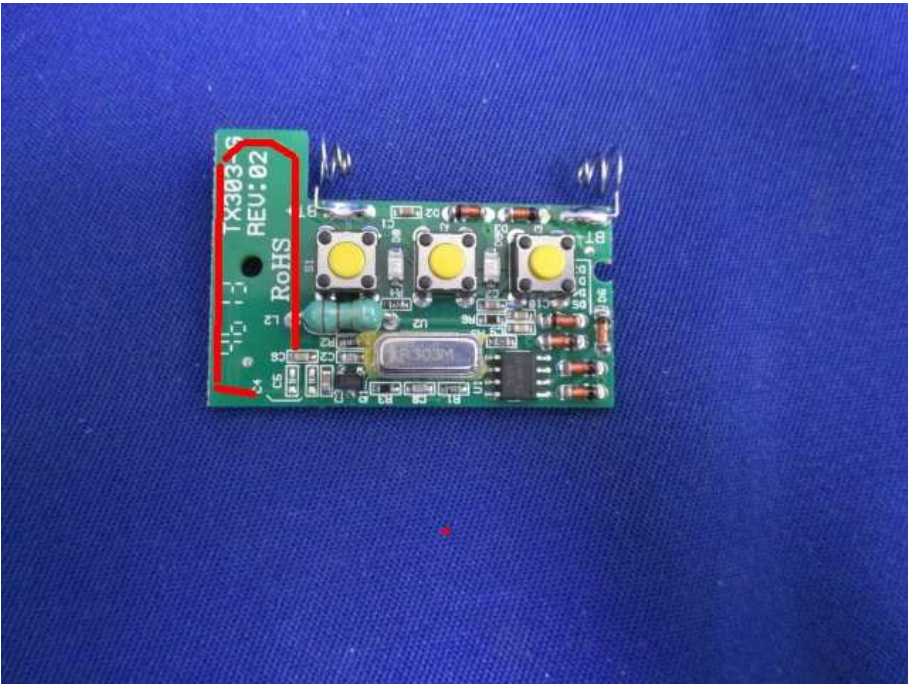




**6 PHOTOGRAPHS OF THE EUT**







NOTE: The red line is antenna position.



## 7 APPENDIX - INFORMATION ON THE TESTING LABORATORY

We, BUREAU VERITAS ADT (Shanghai) Corporation, were founded in 2004 to provide our best service in EMC, Radio and Vehicle consultation. Our laboratories are accredited by the following accreditation bodies according to ISO/IEC 17025 (2005) .

<b>USA</b>	A2LA Certificate No.: 2343.01
<b>China</b>	CNAS Certificate No.: L2810

Copies of accreditation certificates could be inquired from our office. If you have any comments, please feel free to contact us at the following:

**EMC / RF / Vehicle Lab:**

Tel: +86 21 6465 9091

Fax: +86 21 6465 9092

Email: [bvadtshmail@cn.bureauveritas.com](mailto:bvadtshmail@cn.bureauveritas.com)

--- END ---