

Programming Wireless Keyless Entry Pad

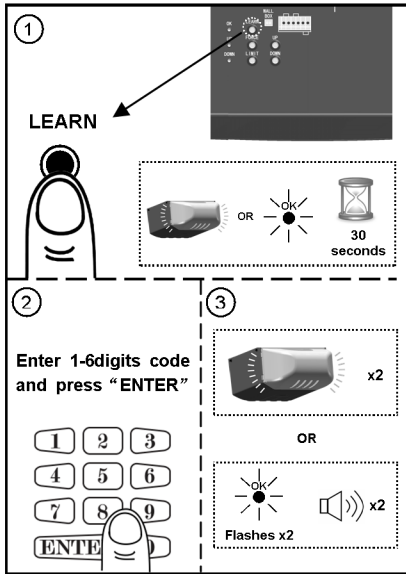


Fig.1

To Add Personal Codes:

1. Press/Release the "LEARN" button on the rear control panel, courtesy light will glow* or "OK" LED will glow and beep*. The unit is now ready to accept a transmitter in the next 30 seconds as shown in Fig.1.
2. Enter 1 - 6 digit(s) personal code on the Keyless Entry within 30 seconds and press/release "ENTER" button.
3. Courtesy light will flash twice* or "OK" LED will flash and beep twice* indicating personal code is stored in memory.

Up to 20 personal codes (including 1-button transmitters) can be added to the unit by repeating the above procedures.

If more than 20 personal codes are stored, the previously stored one from the very beginning will be replaced, i.e. the 21st transmitter replaces the 1st stored one.

Operation:

To access the door, enter a pre-stored personal code and press "ENTER" to transmit code, and within 20s, "ENTER" button can be used to stop or reverse the door.

If the code is entered incorrectly, correction can be made by pressing "ENTER" to reset and re-enter code.

When dark, "ENTER" may be pressed in advance to turn on back light.

Removing ALL Personal Code(s):

To remove ALL personal code(s) and/or transmitters from memory, press and hold the "LEARN" button for 5 seconds. Courtesy light will flash or "OK" LED will flash and beep, indicating ALL codes/transmitters have been removed from memory.

*For units with AC motor

*For units with DC motor

Mounting the Keyless Entry:

Keyless Entry may be secured on door jamb face outside your garage, locate Keyless Entry within sight of door at minimum height of 5 feet (1.5m), ensure it is away from reach of children and moving parts of door and hardware. Test the reception of the Keyless Entry before mounting. Change location for better reception if necessary.

Use the mounting holes on the Keyless Entry as template to mark position on the mounting surface. On wooden use the screws provided. In case of drywall surface, drill holes and use drywall anchors provided.

Replacing Keyless Entry Battery:

When the battery of Keyless Entry is low, dimmed illumination is observed. To replace battery, remove the battery cover by loosening the screws underneath, replace the battery with a 9V battery.

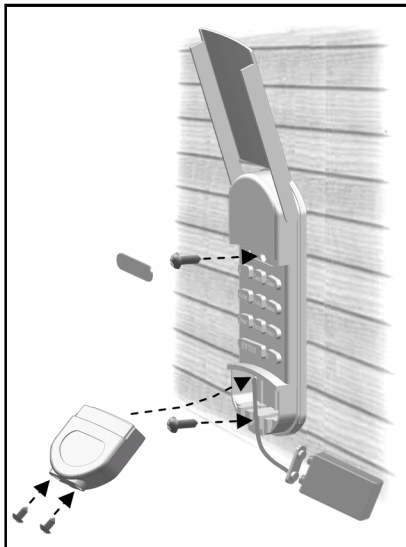


Fig.2

This device complies with Part15 FCC Rlues for HOME OR OFFICE USE Operation is subject to the following two conditions : (1) this device may not cause harmful interference , and (2) this device must accept any interference received , including interference that may cause undesired operation.

Federal Communication Commission Interference Statement:

1. This device complies with Part 15 of the FCC Rules. Operation is subject to the following two conditions: (1) this device may not cause harmful interference, and (2) this device must accept any interference received, including interference that may cause undesired operation.

Changes or modifications not expressly approved by the party responsible for compliance could void the user's authority to operate the equipment.

Note: This equipment has been tested and found to comply with the limits Class B digital device. Pursuant to part 15 of the FCC rules. This limits are designed to a provide reasonable protection against harmful interference in a residential installation. This equipment generates, uses and can radiate radio frequency energy and, if not installed and used in accordance with the instructions, may cause harmful interference to radio communications. However, there is no guarantee that interference will not occur in a particular installation. If this equipment does cause harmful interference to radio or television reception, which can be determined by turning the equipment off and on, The user is encouraged to try to correct the interference by one or more the following measures:

- Reorient or relocate the receiving antenna
- Increase the separation between the equipment and receiver.
- Connect the equipment into an outlet on a circuit different from that to which the receiver is connected
- Consult the dealer on an experienced radio/TV technician for help