

## **XB Internal Photos - 2**



103 Westhaven Drive, St. Mary's Bay  
PO Box 91164, Victoria Street West  
Auckland, New Zealand

Phone: +64 (0)9 950 4848  
Fax: +64 (0)9 950 4085

[www.vespermarine.com](http://www.vespermarine.com)

## Version History

| Version | Date     | Comment  | Author |
|---------|----------|--|--------|
| 1       | 09/07/12 | First version  | CBO    |
| 2       | 10/07/12 | Higher Resolution Photos                               | CBO    |
| 3       | 10/09/12 | Seperate Documents to accomodate FCC size restrictions | CBO    |

## Copyright Notice

Copyright © 2010, Vesper Marine Ltd. All rights are reserved.

The information contained within this document is the copyright of Vesper Marine Ltd

No part of this document may be disclosed, reproduced or transmitted in any form, or by any means without the written permission of Vesper Marine Ltd. The term document extends to all forms of media in which information may be embodied.

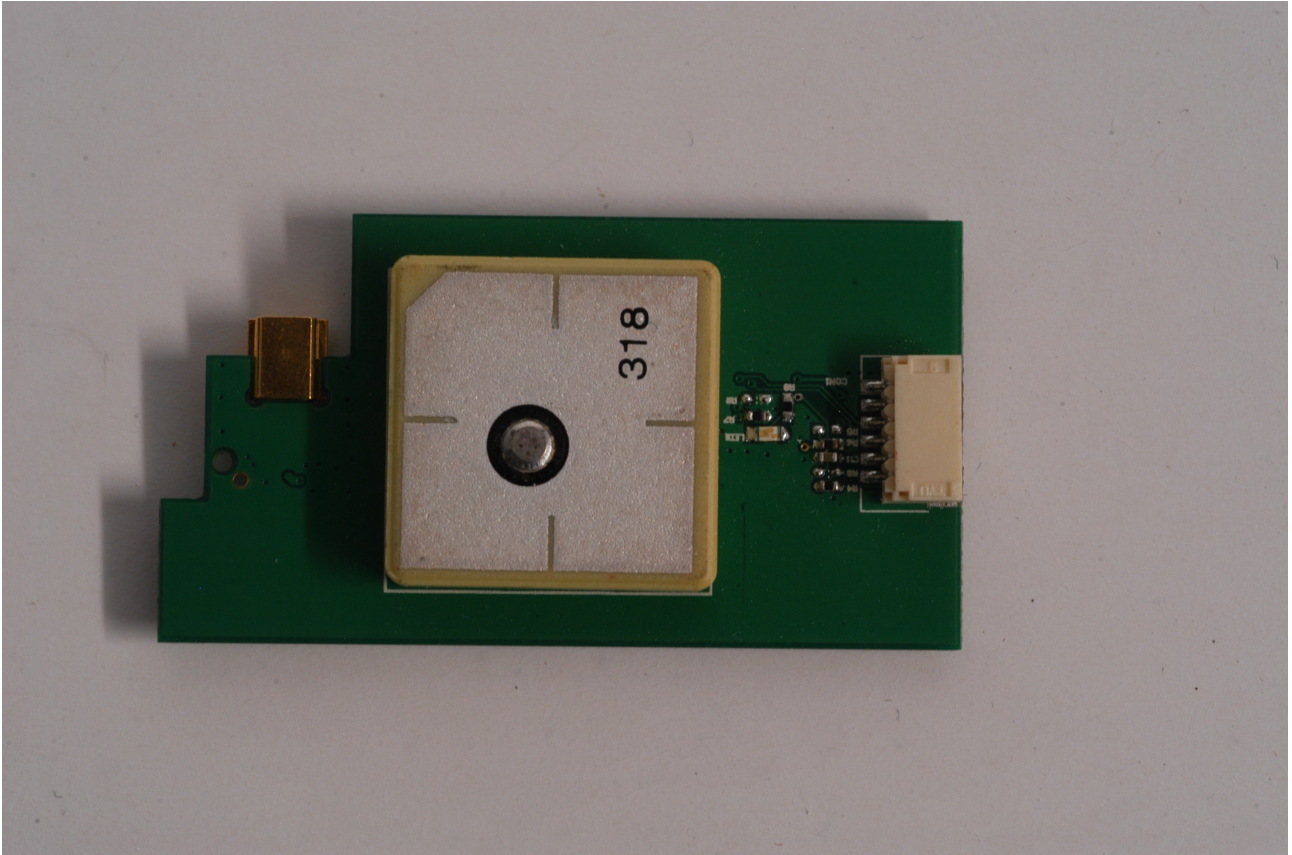
## Product Identification

|                              |  |
|------------------------------|--|
| <i>Product Family</i>        | XB Series  |
| <i>Manufacturer</i>          | Vesper Marine Ltd                                    |
| <i>Model Number s</i>        | <b>XB9000, XB8000, XB6000*</b>                       |
| <i>Power Supply</i>          | 12-24V DC  |
| <i>VHF Frequency Range</i>   | 161.500 – 162.025 MHz TX<br>156.025 – 162.025 MHz RX |
| <i>Transmit Power</i>        | 33dBm (2W)   |
| <i>Modulation Technique</i>  | FM GMSK  |
| <i>Channel Spacing</i>       | 25kHz  |
| <i>Temperature Range</i>     | -25 - +55 deg C                                      |
| <i>Intended Users</i>        | General Public                                       |
| <i>Enclosure</i>             | Ipx7   |
| <i>Wireless connectivity</i> | 802.11 b/g (XB9000 and XB8000 only)                  |

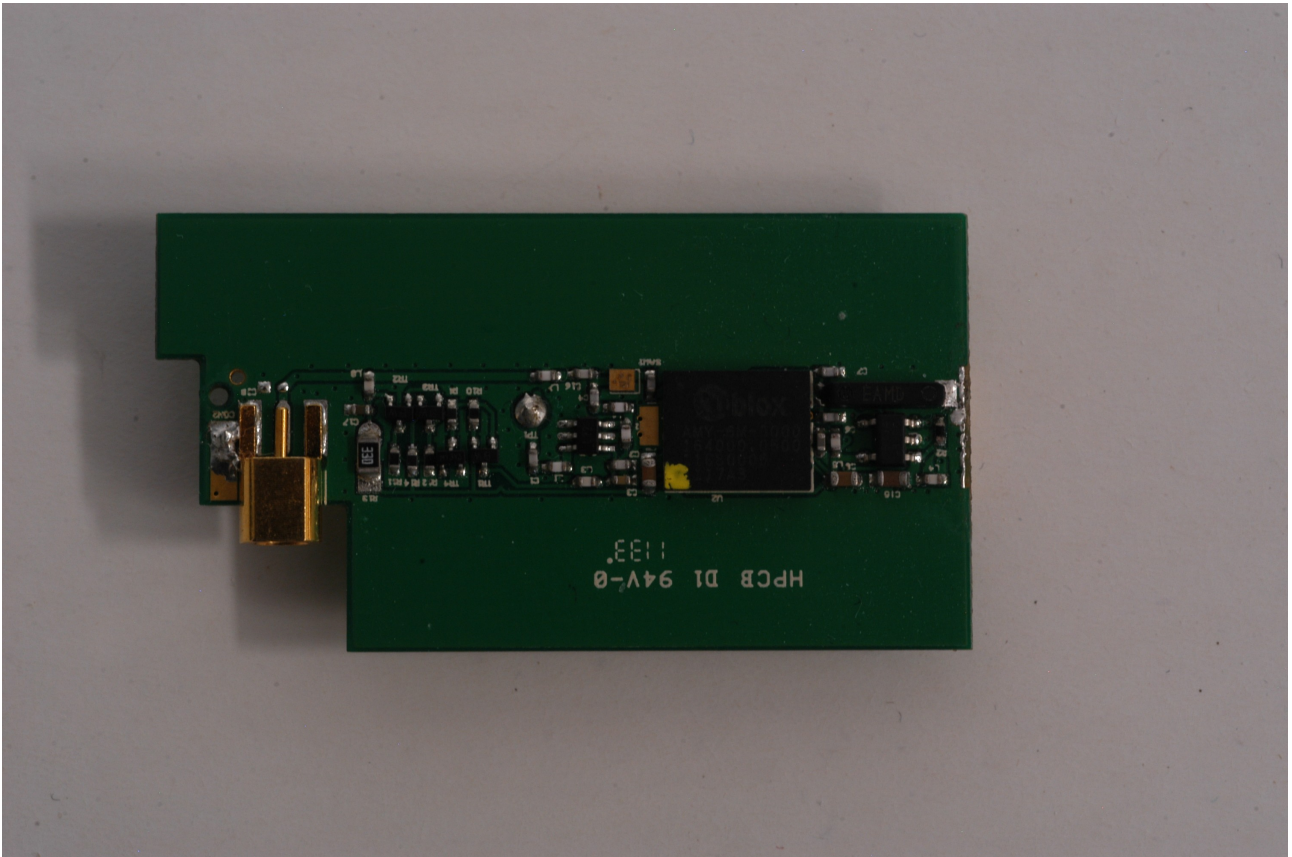
*\*XB-6000 is a deconfigured variant of the XB-8000 as it does not include the User Interface Processor board but is otherwise identical.*

## Internal Photos – Modules, PCB Assemblies

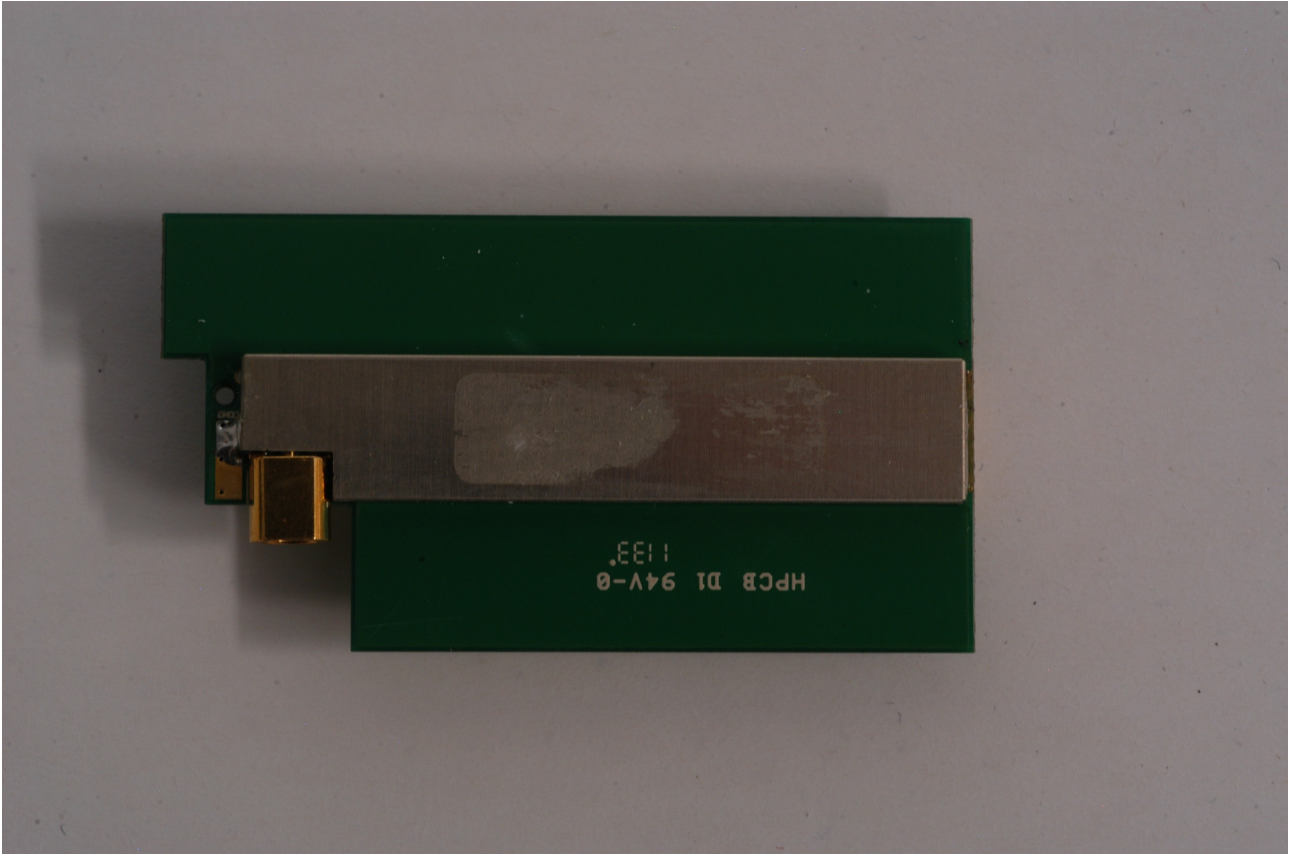
### GPS Module



GPS Module – Top Side



GPS Module (Shield Removed) – Bottom Side

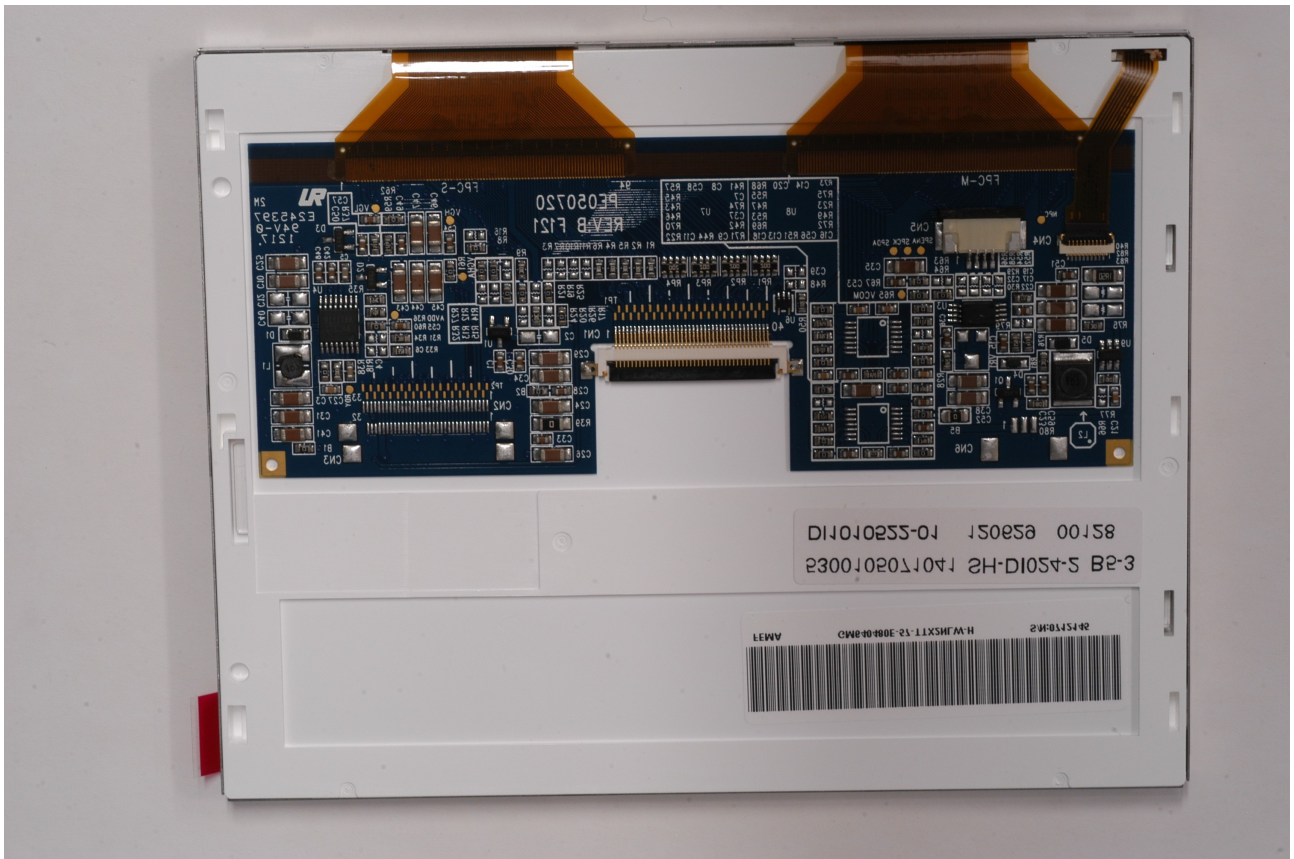


GPS Module (Shield Fitted) – Bottom Side

**LCD Module**



LCD Module – Front

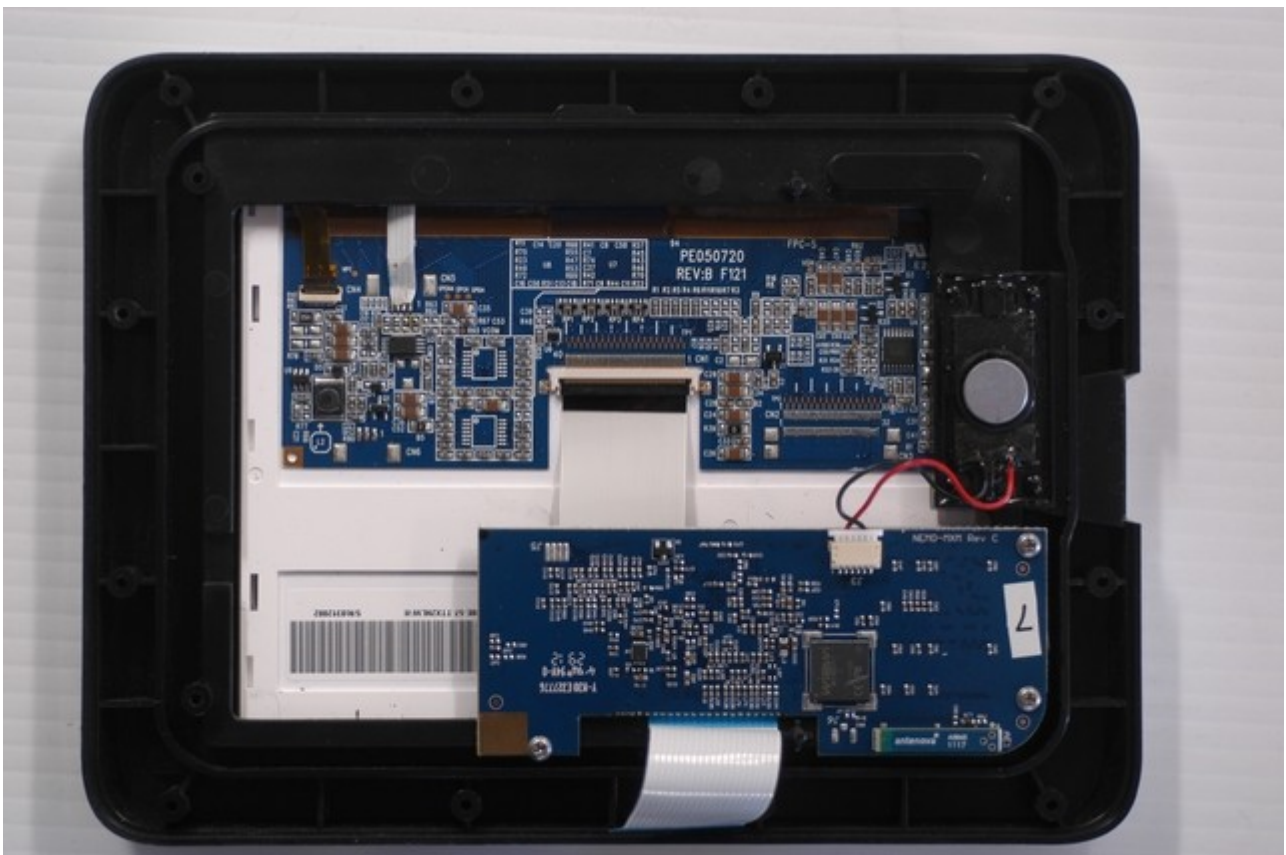


LCD Module – Rear

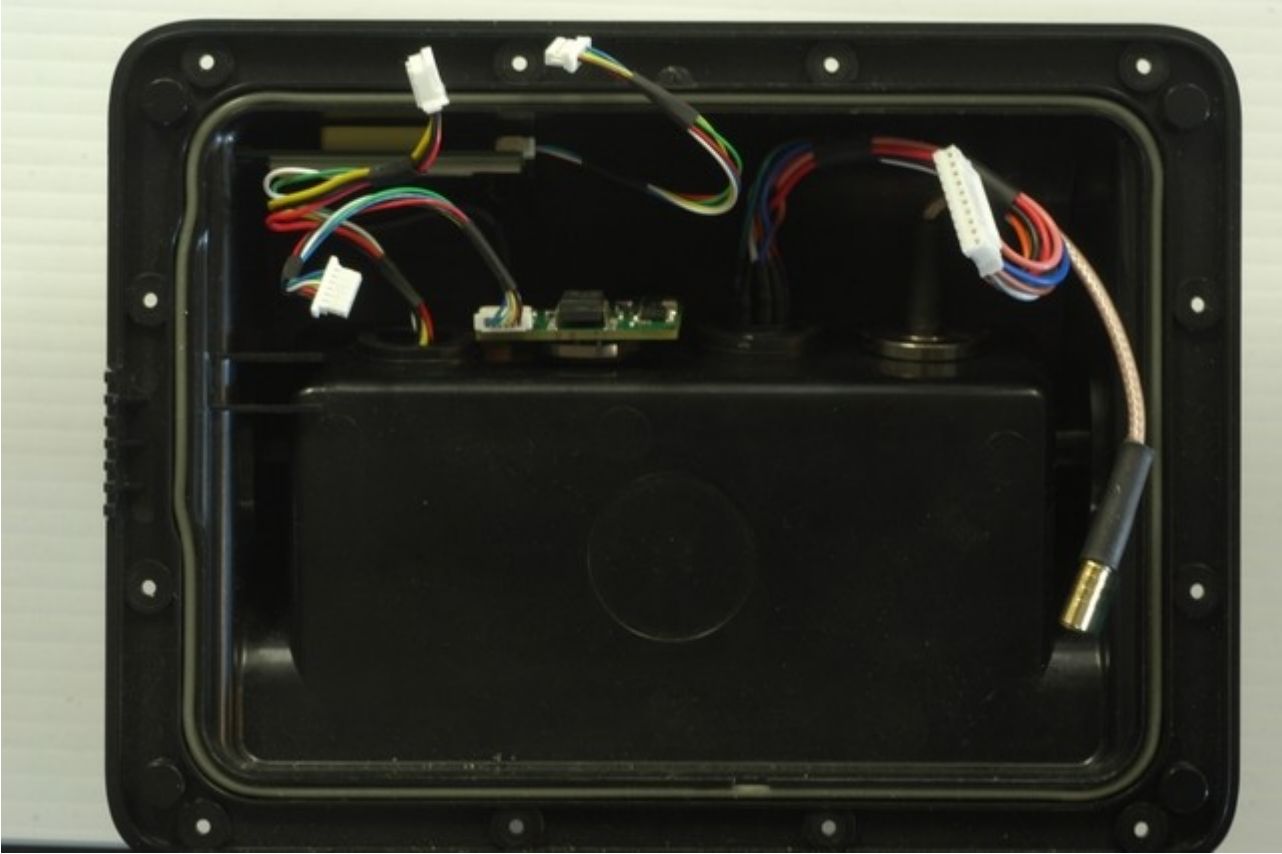


## Internal Photos – Assembly stack up

### WatchMate Vision (XB9000)



WatchMate Vision (XB9000) – Front LCD and User Interface assembly



WatchMate Vision (XB9000) – Rear GPS and External Connectors



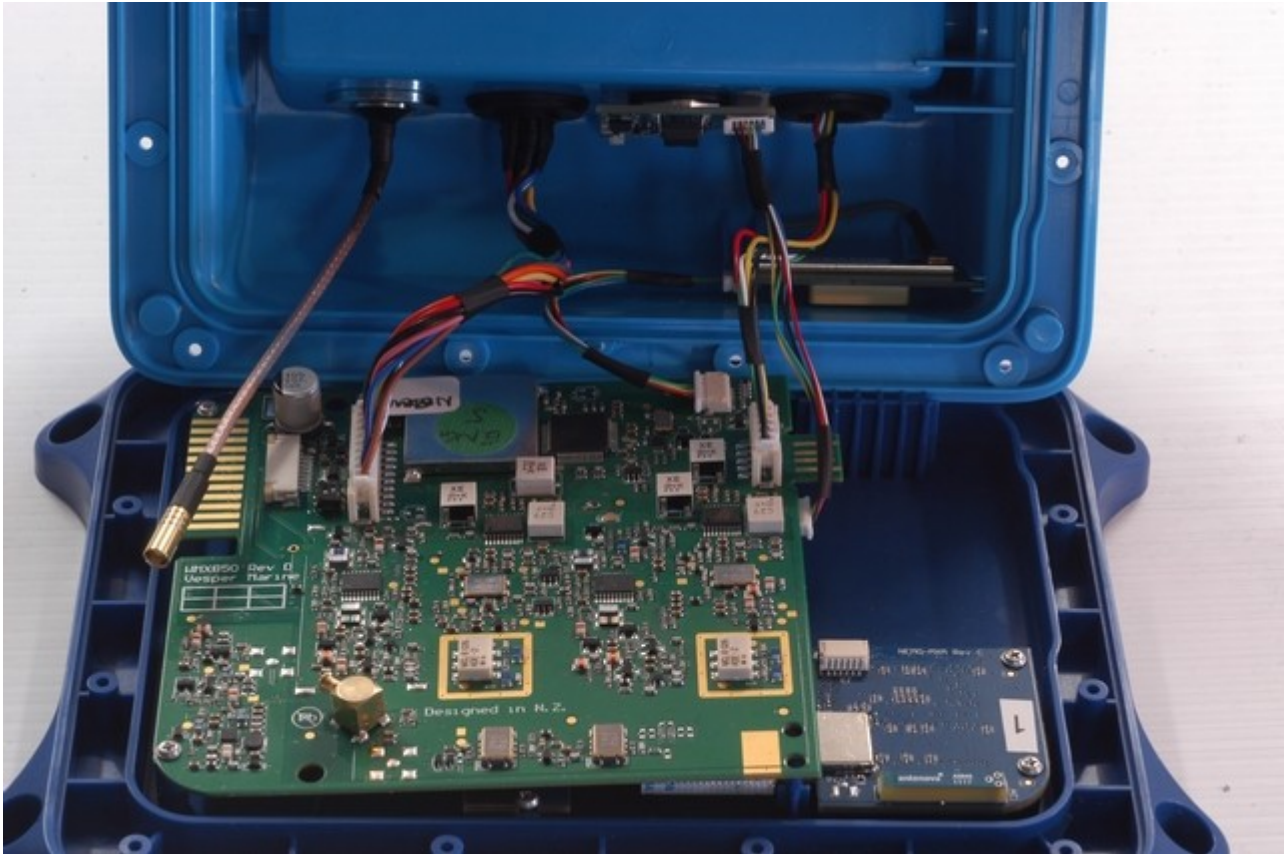
WatchMate Vision (XB9000) – Internal Connector Assembly

**XB-8000 / XB-6000**



XB-8000 – Rear AIS Engine and User Interface Processor

Note, XB-6000 is as shown but without the XB User Interface Processor



XB-8000 – Internal Connector assembly

Note, XB-6000 is as shown but without the XB User Interface Processor