

XB Series Test Setup Photos



103 Westhaven Drive, St. Mary's Bay
PO Box 91164, Victoria Street West
Auckland, New Zealand

Phone: +64 (0)9 950 4848
Fax: +64 (0)9 950 4085

www.vespermarine.com

Version History

Version	Date	Comment
1	7 Oct 2012	First Release

Copyright Notice

Copyright © 2012, Vesper Marine Ltd. All rights are reserved.

The information contained within this document is the copyright of Vesper Marine Ltd

No part of this document may be disclosed, reproduced or transmitted in any form, or by any means without the written permission of Vesper Marine Ltd. The term document extends to all forms of media in which information may be embodied.

Product Family Identification

<i>Products</i>	WatchMate Vision, XB-8000, XB-6000
<i>Trade Name</i>	Vesper Marine Ltd
<i>Model Numbers</i>	XB9000, XB8000, XB6000
<i>Power Supply</i>	12-24V DC
<i>AIS Frequency Range</i>	161.500 – 162.025 MHz TX 156.025 – 162.025 MHz RX
<i>AIS Transmit Power</i>	33dBm (2W)
<i>Modulation Technique</i>	FM GMSK
<i>Channel Spacing</i>	25kHz
<i>Temperature Range</i>	-25 - +55 deg C
<i>Intended Users</i>	General Public
<i>GPS Antenna</i>	Internal patch antenna (with connection for optional external antenna)
<i>WiFi*</i>	802.11 b/g
<i>WiFi Antenna</i>	SMT PCB
<i>WiFi Power output</i>	15dBm
<i>Equipment type</i>	Fixed (Not portable)
<i>Enclosure</i>	IPX7
<i>Firmware Version</i>	V5.06

For more details please refer to the user manual and website www.vespermarine.com

*Not included in XB-6000

XB Series Test Setup

These photos are provided as a separate reference for the setup of the XB Series testing.

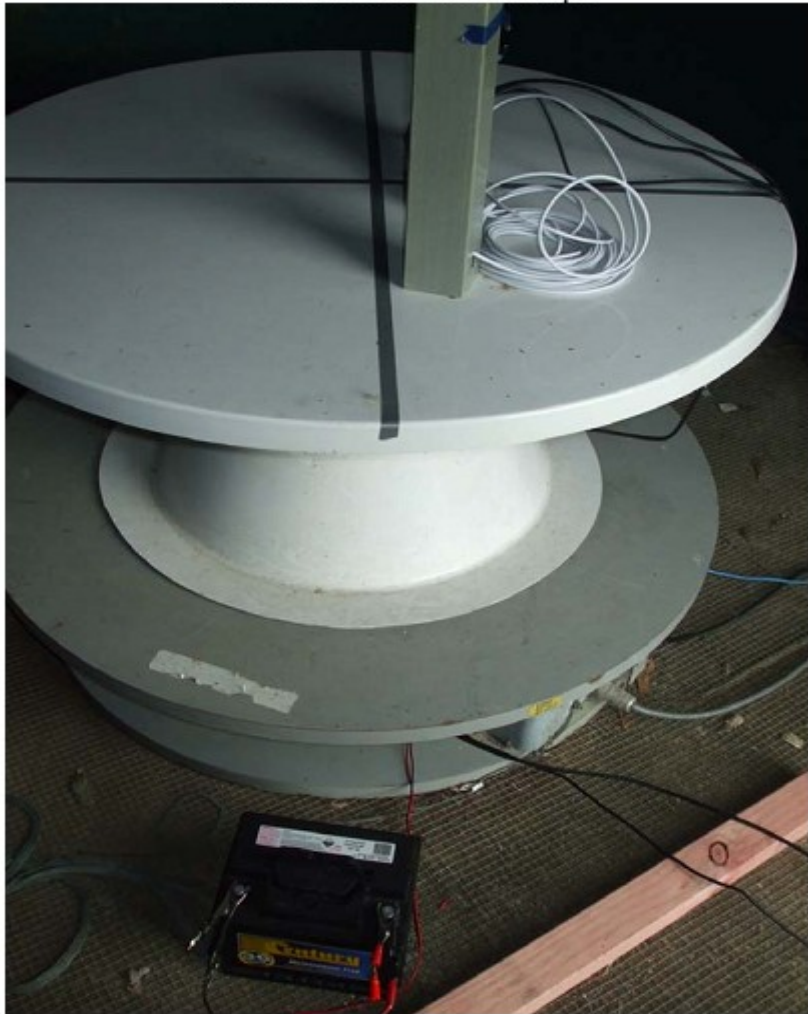
Device under test as submitted

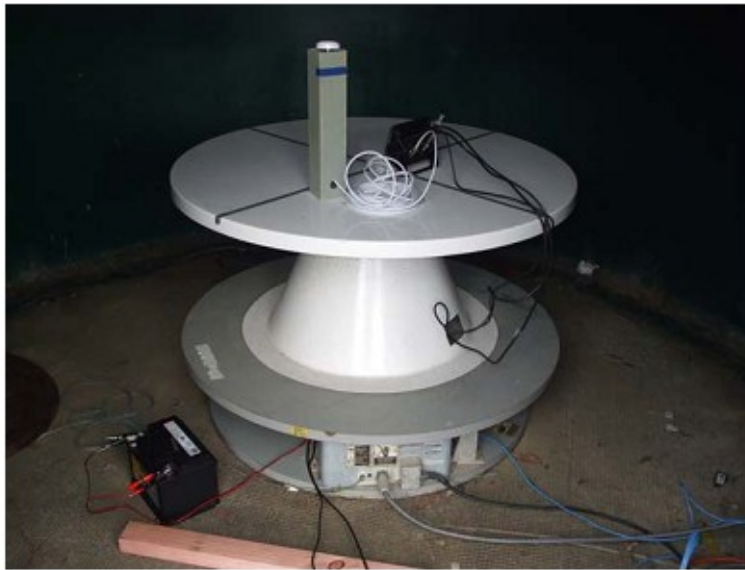


Device under test and ancillary items as submitted



Radiated emissions test set ups.





Radiated immunity test set up photos



Conducted immunity test set up photo

