

## **XB Internal Photos - 1**



103 Westhaven Drive, St. Mary's Bay  
PO Box 91164, Victoria Street West  
Auckland, New Zealand

Phone: +64 (0)9 950 4848  
Fax: +64 (0)9 950 4085

[www.vespermarine.com](http://www.vespermarine.com)

## Version History

Version	Date	Comment	Author
1	09/07/12	First version	CBO
2	10/07/12	Higher Resolution Photos	CBO
3	10/09/12	Seperate Documents to accomodate FCC size restrictions	CBO

## Copyright Notice

Copyright © 2010, Vesper Marine Ltd. All rights are reserved.

The information contained within this document is the copyright of Vesper Marine Ltd

No part of this document may be disclosed, reproduced or transmitted in any form, or by any means without the written permission of Vesper Marine Ltd. The term document extends to all forms of media in which information may be embodied.

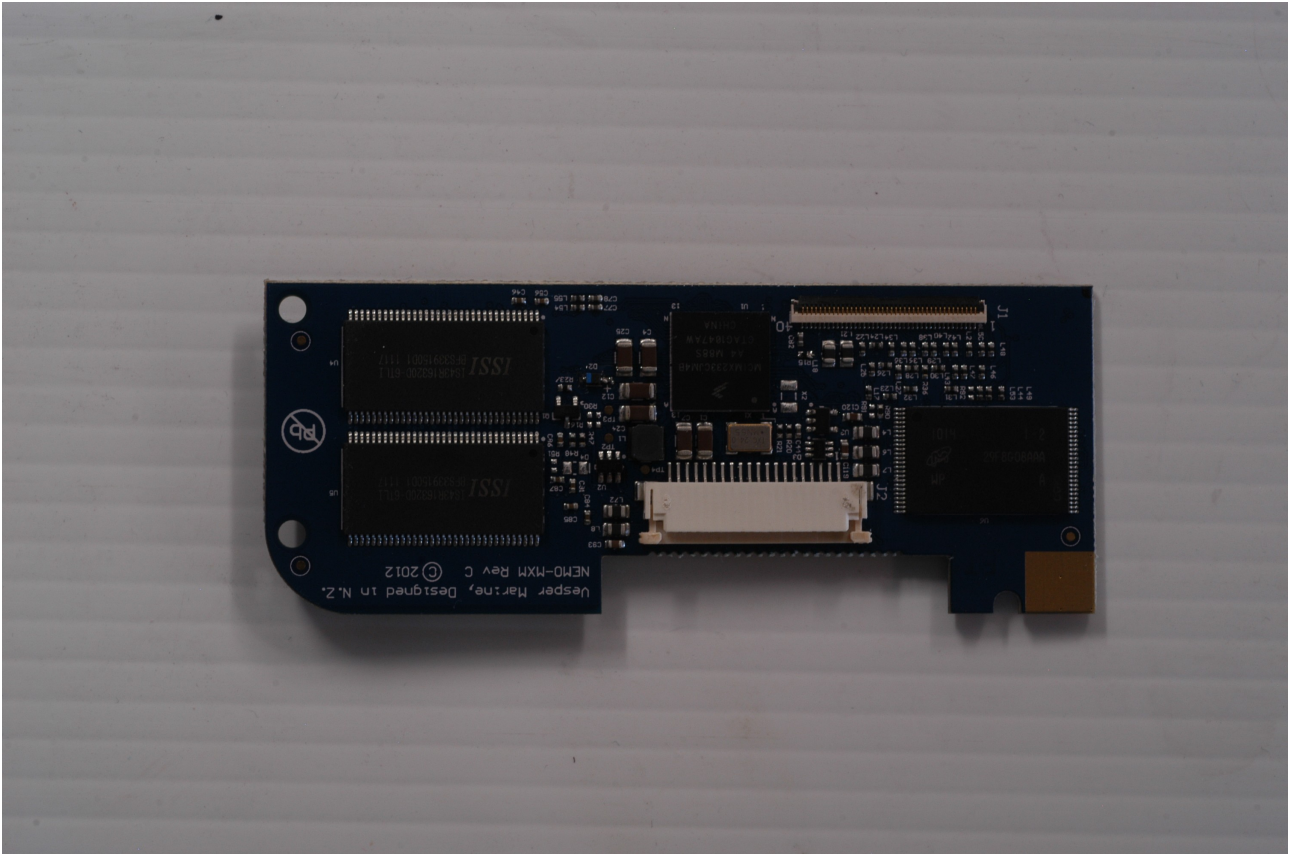
**Product Identification**

<i>Product Family</i>	XB Series
<i>Manufacturer</i>	Vesper Marine Ltd
<i>Model Number s</i>	<b>XB9000, XB8000, XB6000*</b>
<i>Power Supply</i>	12-24V DC
<i>VHF Frequency Range</i>	161.500 – 162.025 MHz TX 156.025 – 162.025 MHz RX
<i>Transmit Power</i>	33dBm (2W)
<i>Modulation Technique</i>	FM GMSK
<i>Channel Spacing</i>	25kHz
<i>Temperature Range</i>	-25 - +55 deg C
<i>Intended Users</i>	General Public
<i>Enclosure</i>	Ipx7
<i>Wireless connectivity</i>	802.11 b/g (XB9000 and XB8000 only)

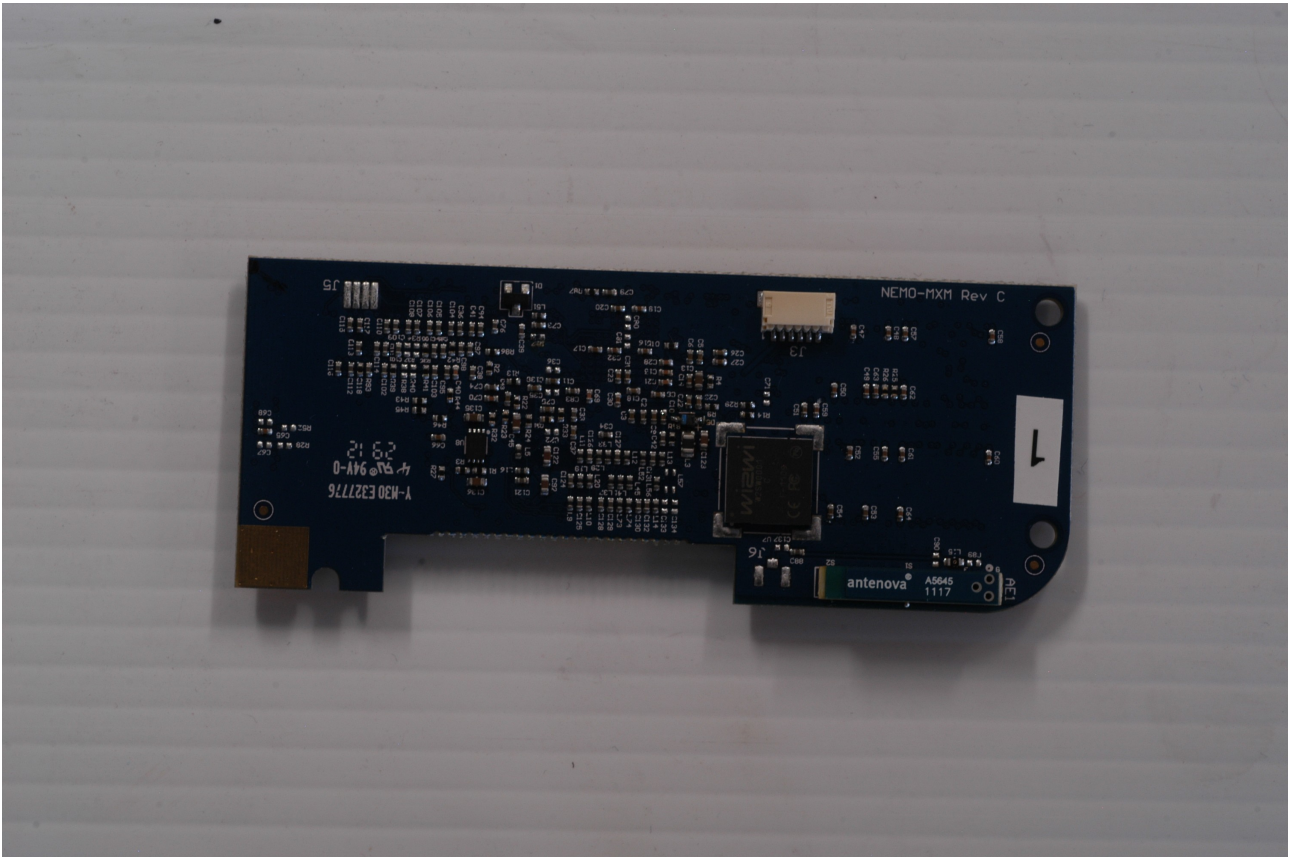
*\*XB-6000 is a deconfigured variant of the XB-8000 as it does not include the User Interface Processor board but is otherwise identical.*

## Internal Photos - PCB Assemblies

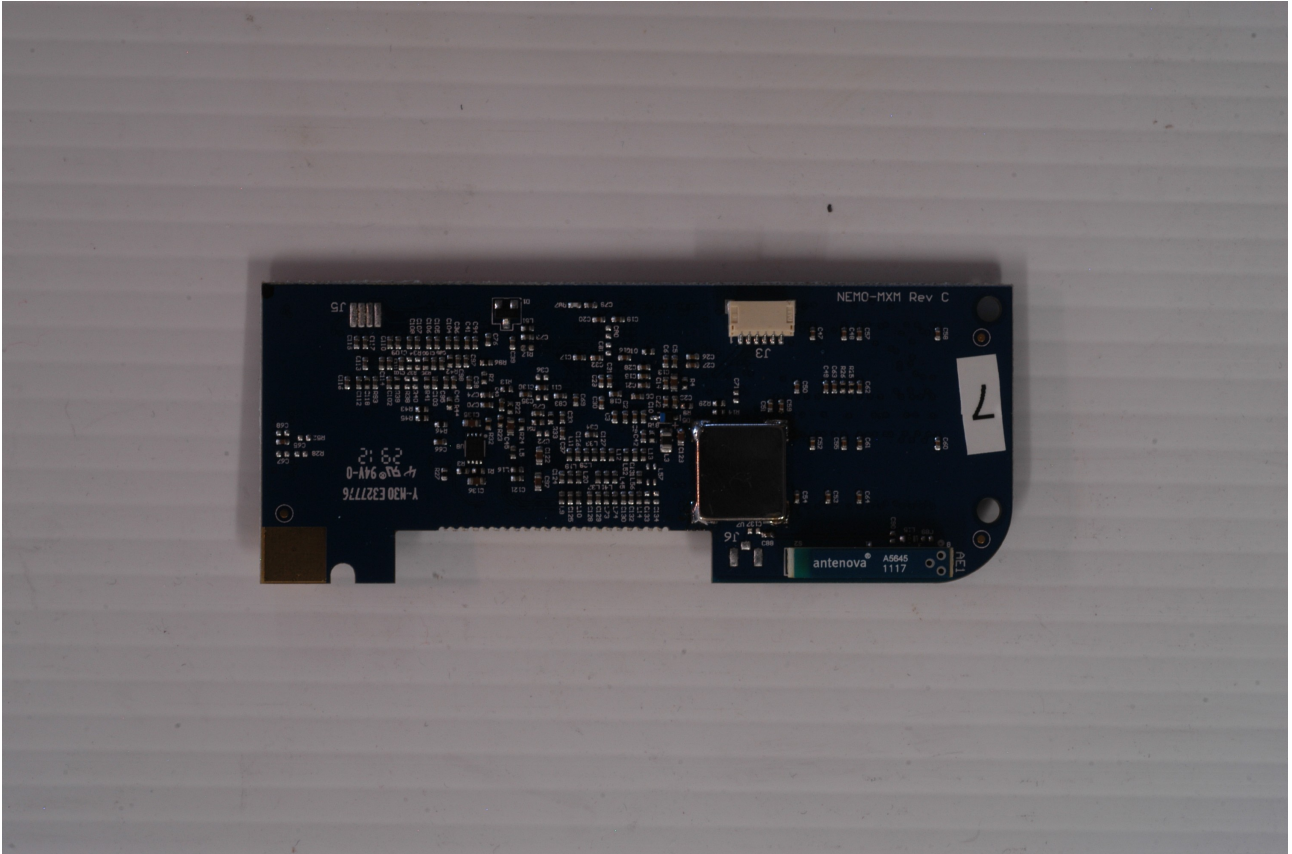
### XB User Interface Processor



XB User Interface Processor – Top side

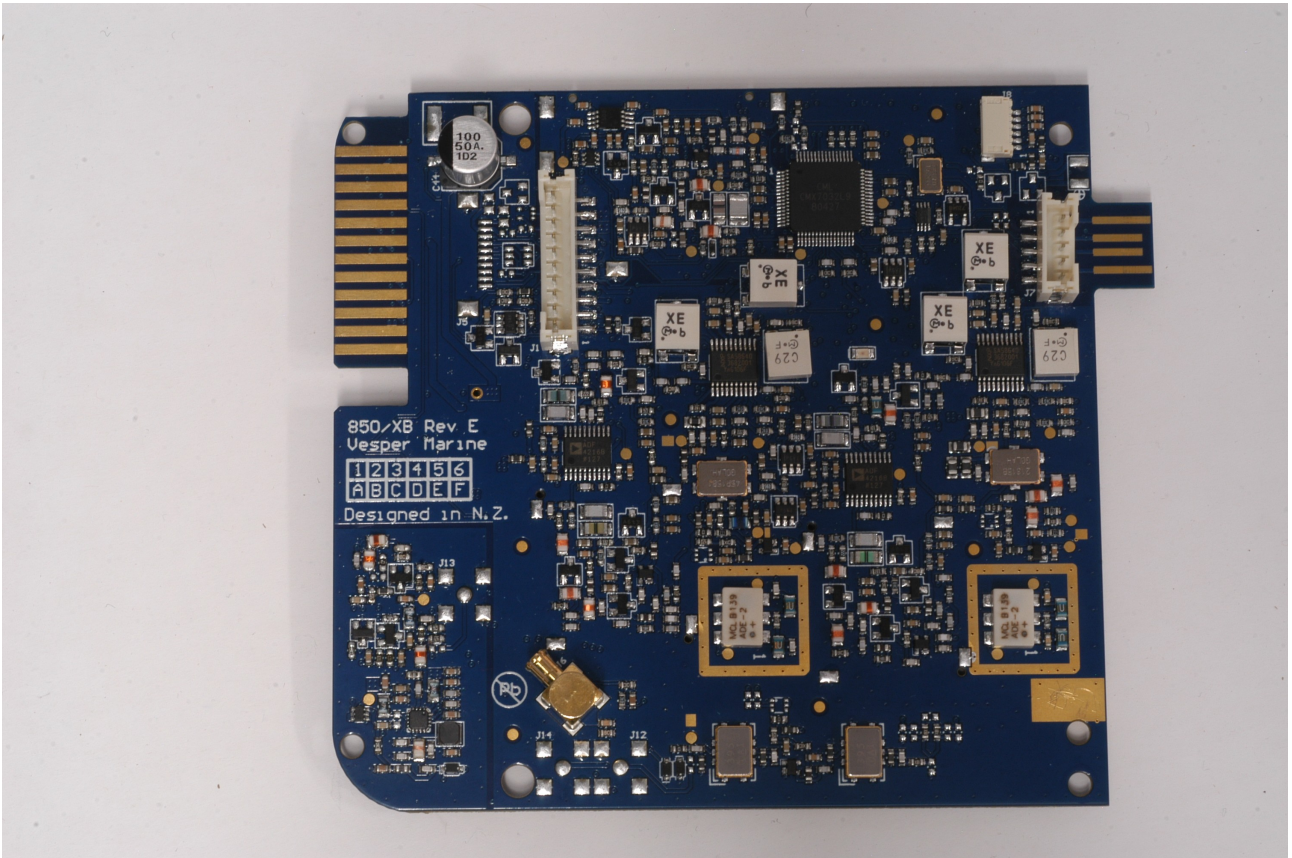


XB User Interface Processor – Bottom side

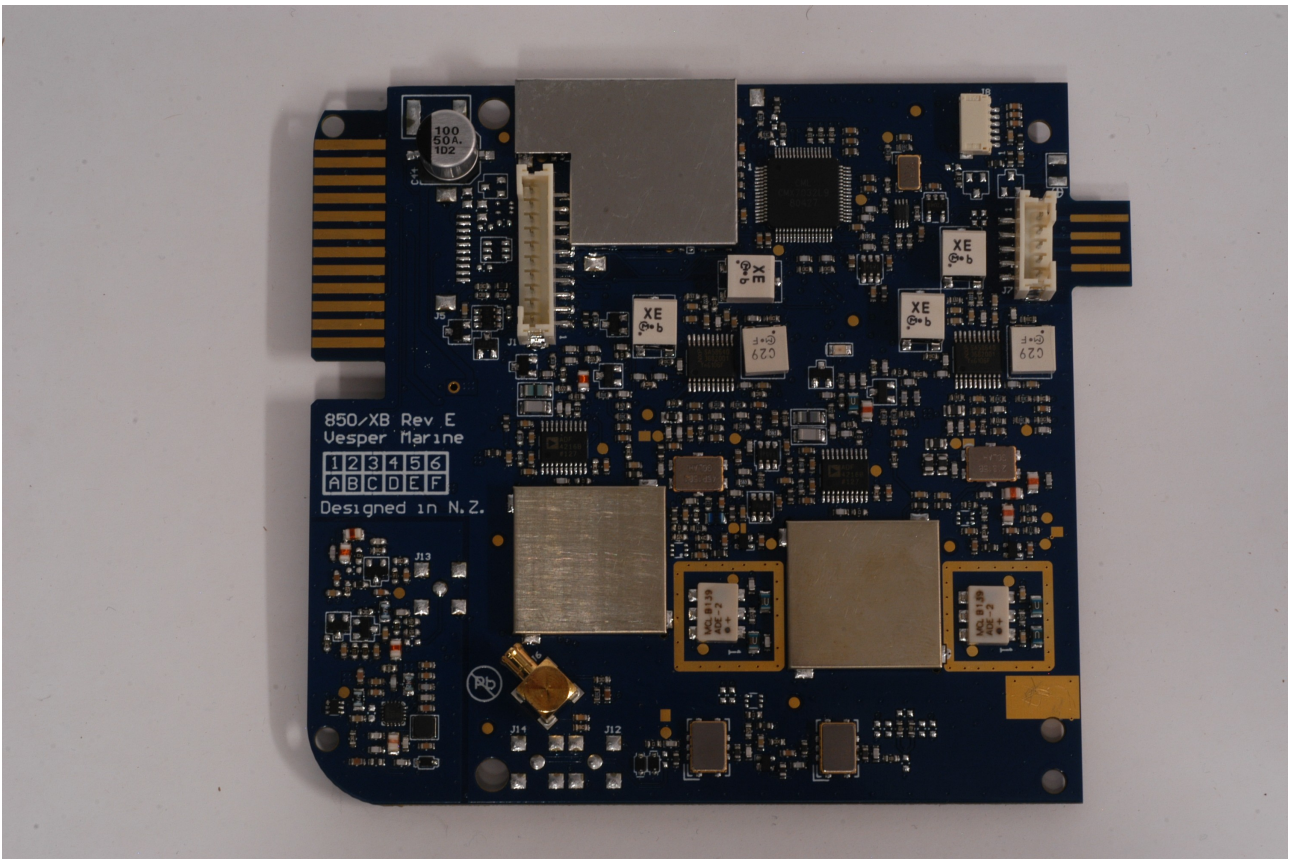


XB User Interface Processor (WiFi Shield Loaded) – Bottom side

## WMX850 AIS Engine

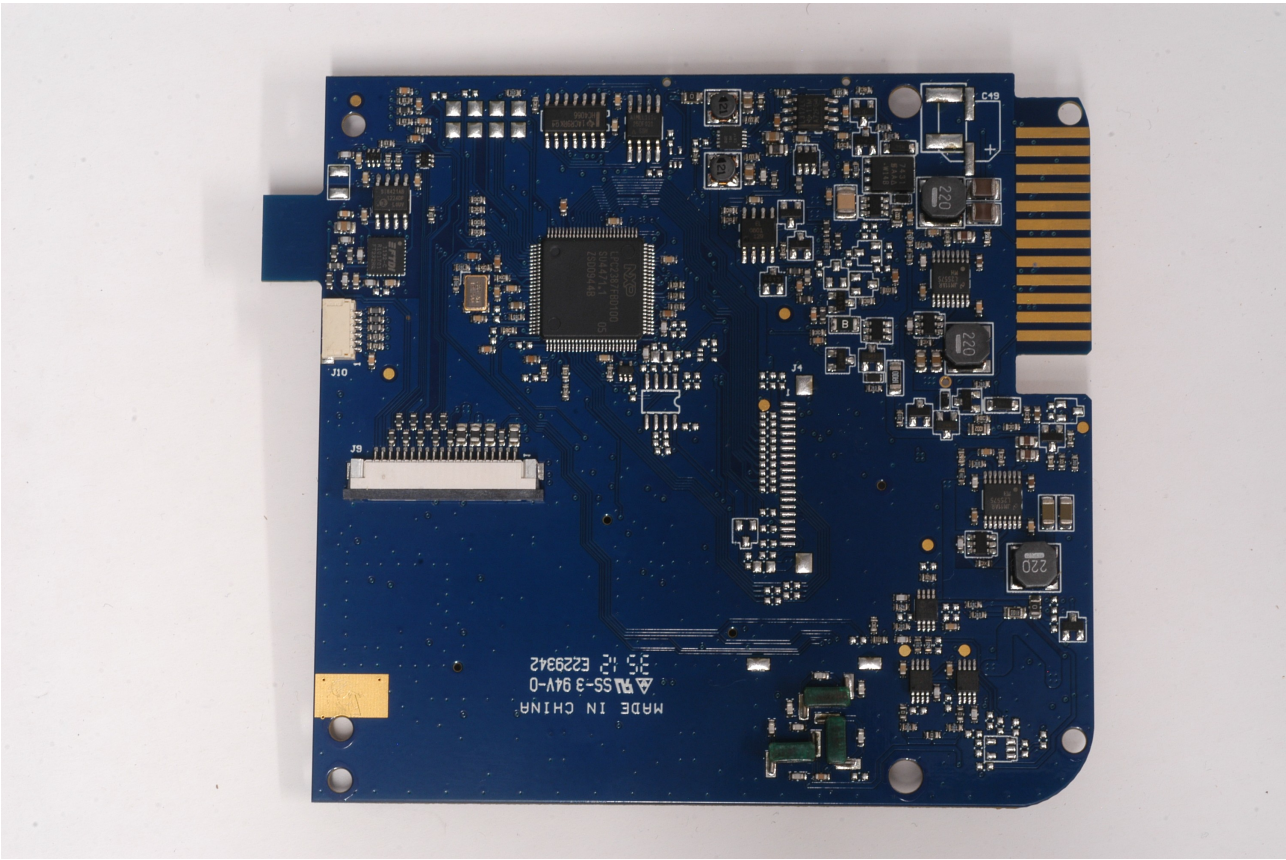


WMX850 AIS Engine – Top side (Shields removed)



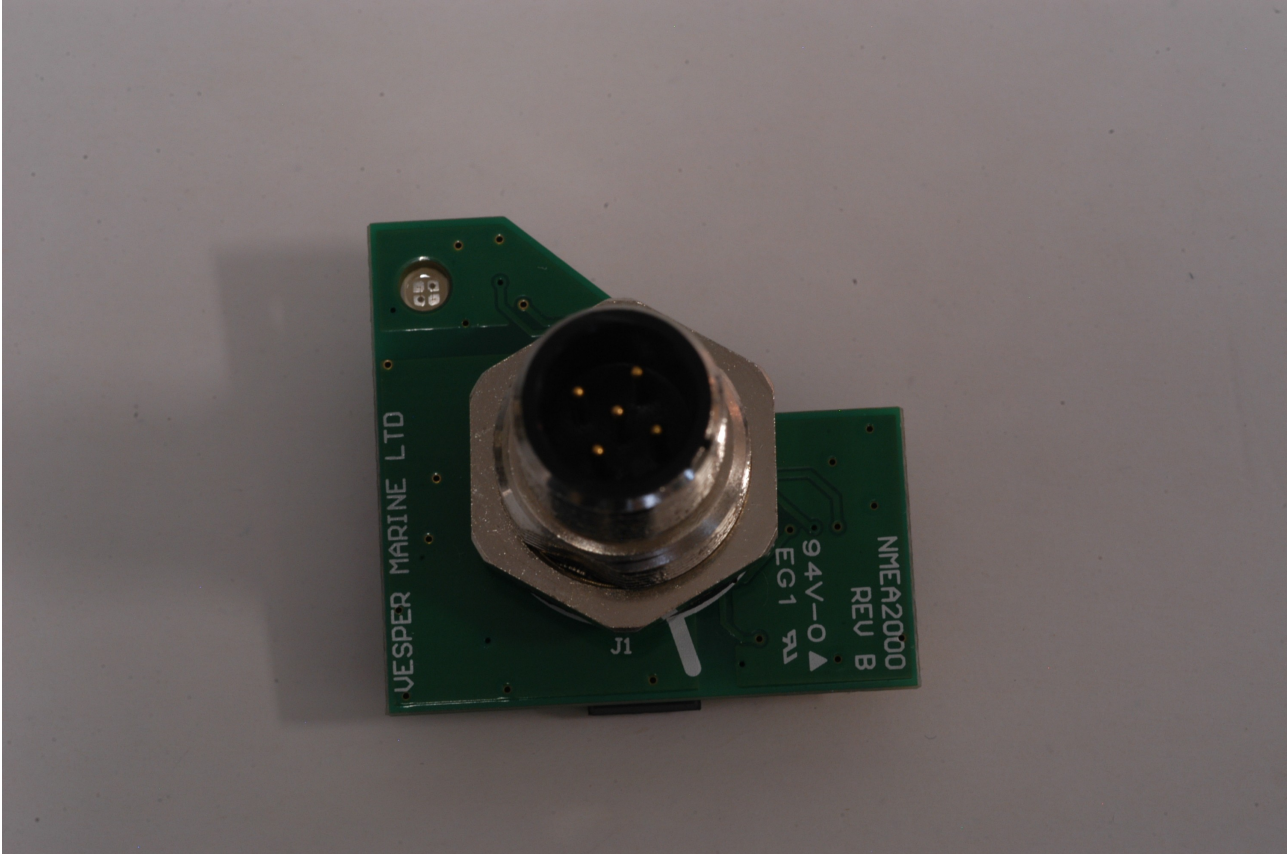
WMX850 AIS Engine – Top side (Shields fitted)



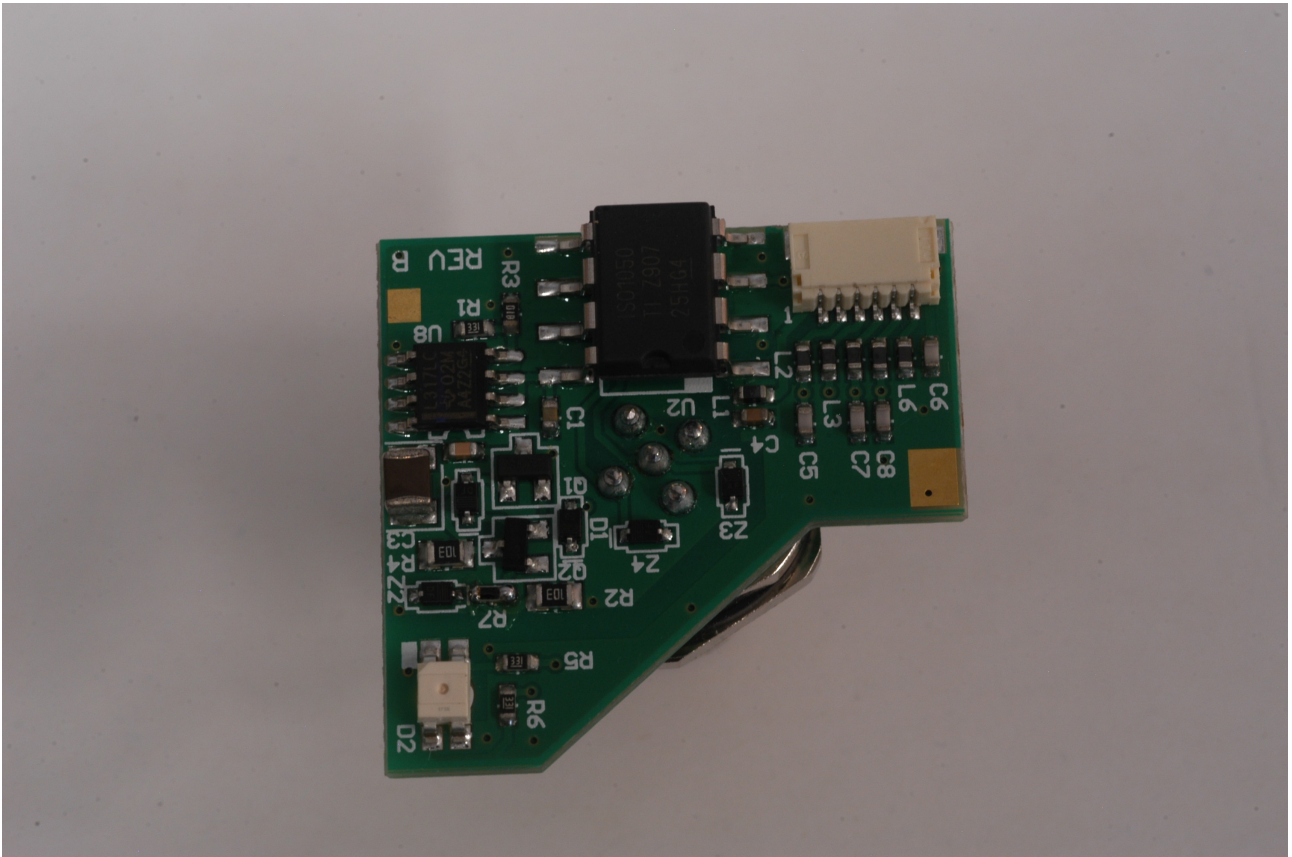


WMX850 AIS Engine – Bottom side

**NMEA 2000 Interface**



NMEA 2000 Interface – Bottom Side



NMEA 2000 Interface – Top Side