

## **WMX850 Internal Photos**



103 Westhaven Drive, St. Mary's Bay  
PO Box 91164, Victoria Street West  
Auckland, New Zealand

Phone: +64 (0)9 950 4848  
Fax: +64 (0)9 950 4085

[www.vespermarine.com](http://www.vespermarine.com)

## Version History

Version	Date	Comment	Author
1	13/10/10	First version	CBO

## Copyright Notice

Copyright © 2010, Vesper Marine Ltd. All rights are reserved.

The information contained within this document is the copyright of Vesper Marine Ltd

No part of this document may be disclosed, reproduced or transmitted in any form, or by any means without the written permission of Vesper Marine Ltd. The term document extends to all forms of media in which information may be embodied.

**Product Identification**

<i>Product</i>	AIS WatchMate WMX850 Collision Warning System with integrated AIS Class B Transceiver
<i>Manufacturer</i>	Vesper Marine Ltd
<i>Model Number</i>	WMX850
<i>Power Supply</i>	12-24V DC
<i>Frequency Range</i>	161.500 – 162.025 MHz TX 156.025 – 162.025 MHz RX
<i>Transmit Power</i>	33dBm (2W)
<i>Modulation Technique</i>	FM GMSK
<i>Channel Spacing</i>	25kHz
<i>Temperature Range</i>	-25 - +55 deg C
<i>Intended Users</i>	General Public
<i>GPS Antenna</i>	Internal patch antenna (with connection for optional external antenna)
<i>Enclosure</i>	IPx7

## Internal Photos



WMX850 – Enclosure open showing connectors in place

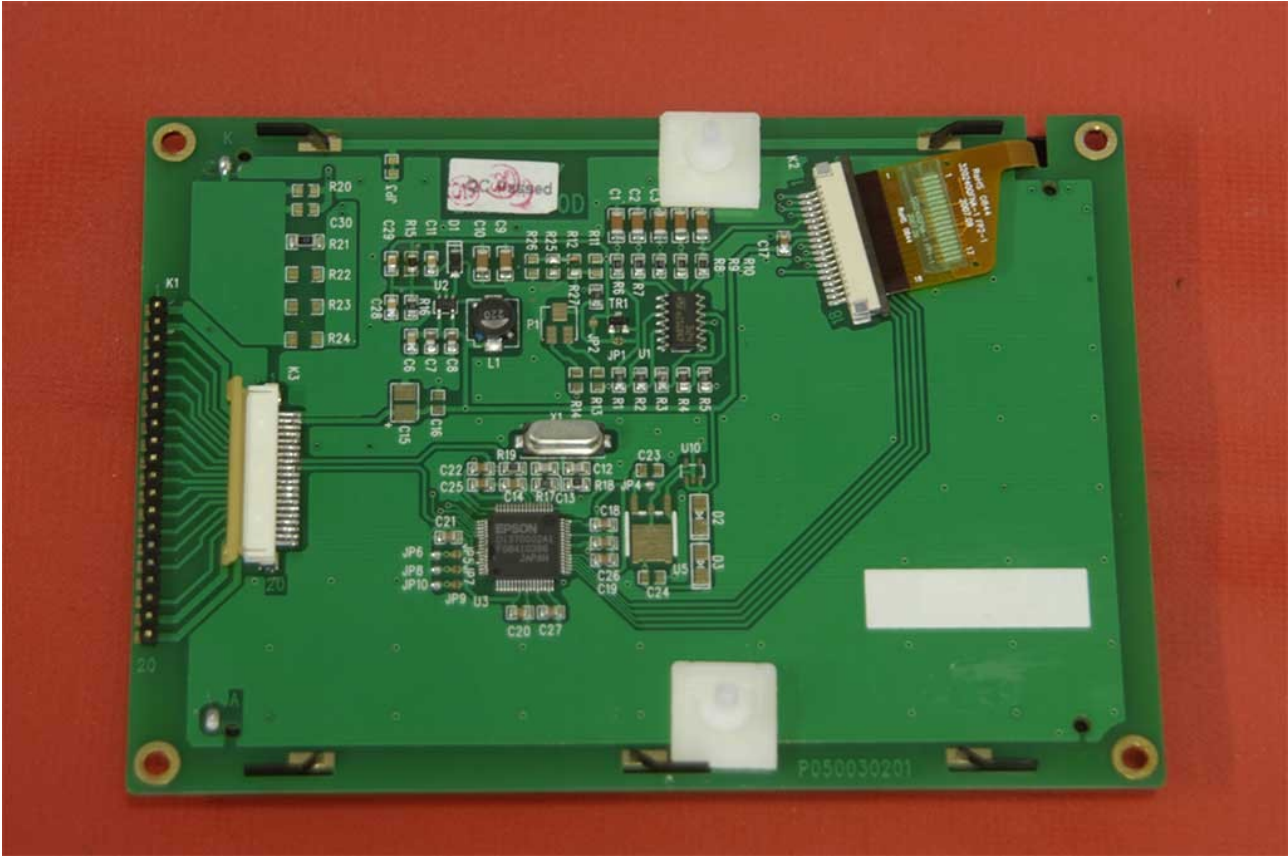


WMX850 – Rear assembly



WMX850 – Front assembly





LCD PCB – Top

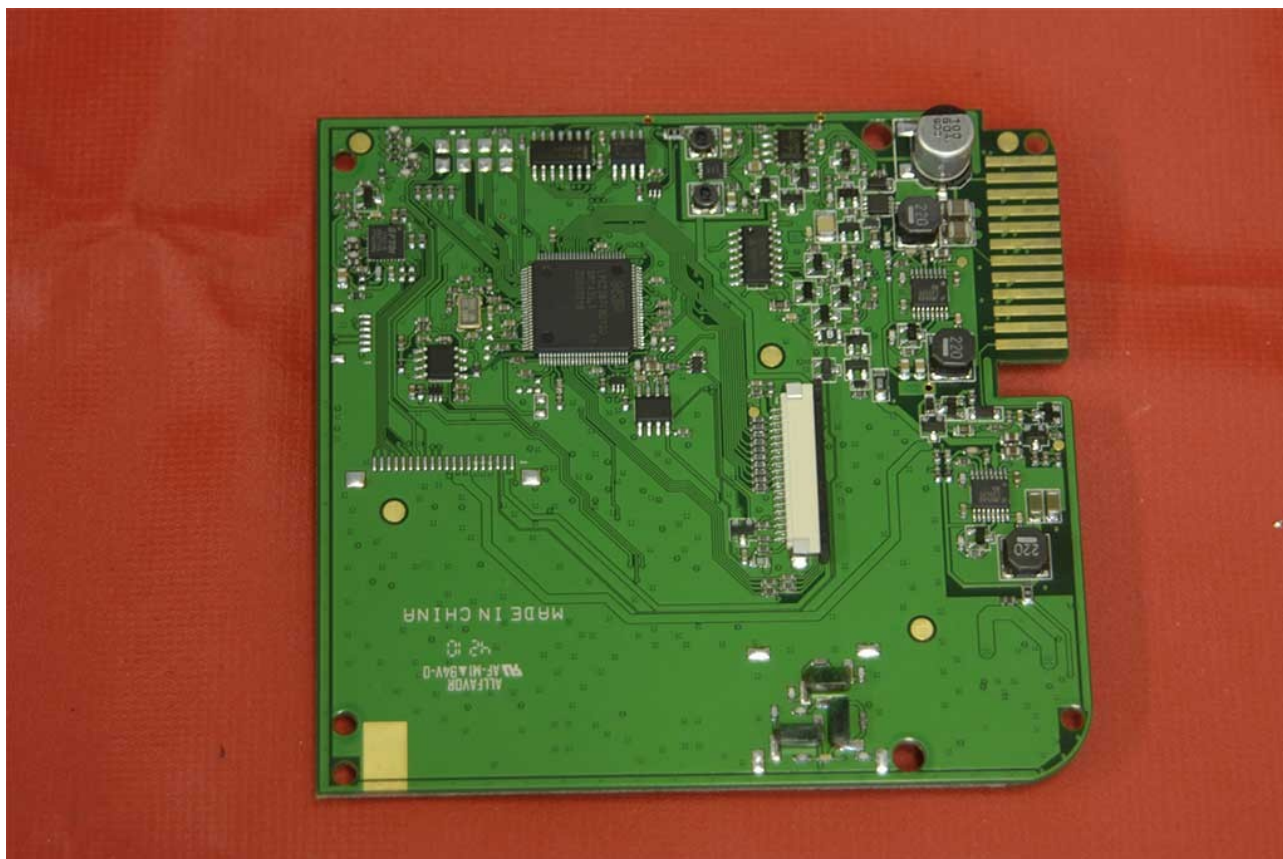


LCD PCB – Bottom





Main PCB – Top



Main PCB – Bottom