

## CMCR001, Bluetooth Speaker



CMCR001, whole view



CMCR001, front view



CMC001, back view (with name plate & FCC/IC label)

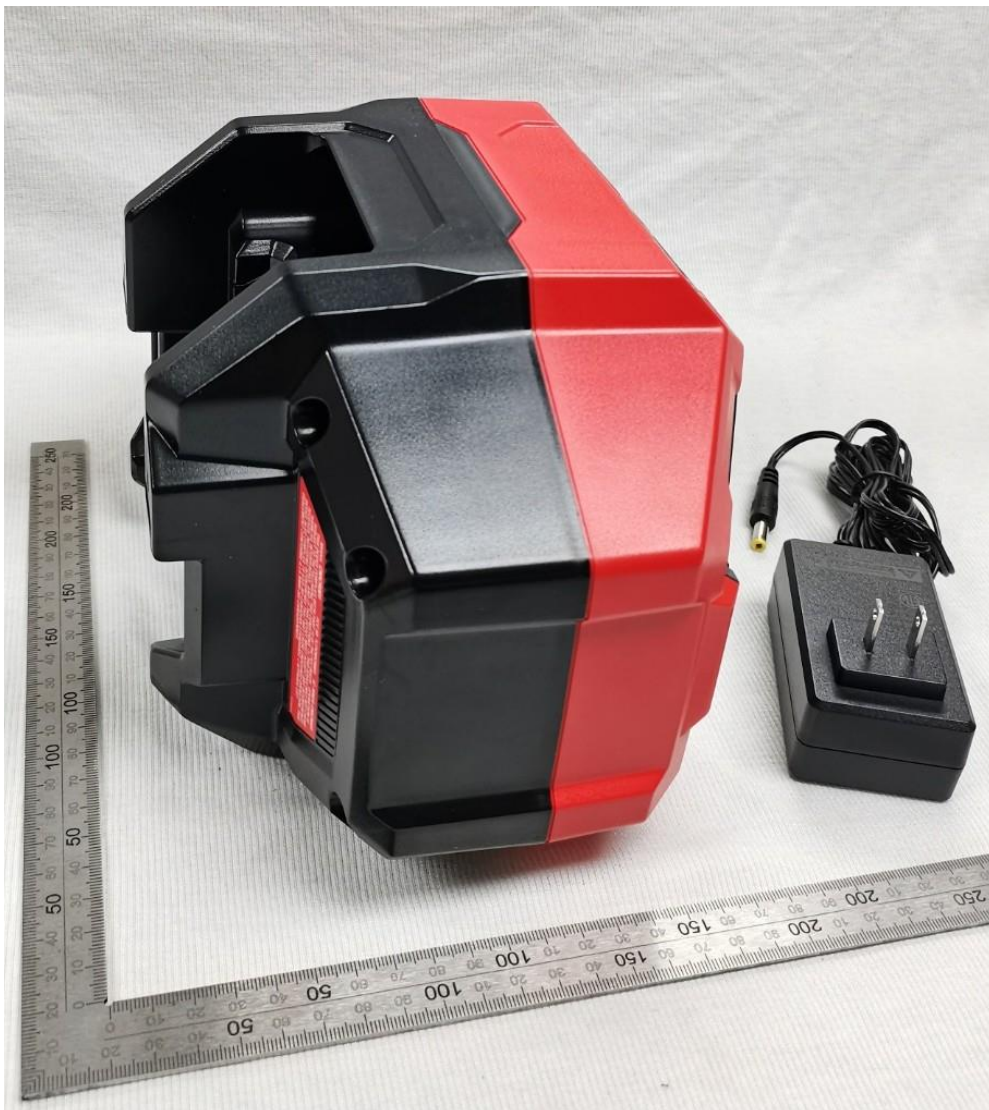


CMC001, top view





Bottom view



left view



right view



Right view, with an AUDIO IN jack (  $\phi$  3.5 mm stereo mini jack), and a USB type-A connector (for output charging only), and a DC IN jack.