

DELETE
FLAG

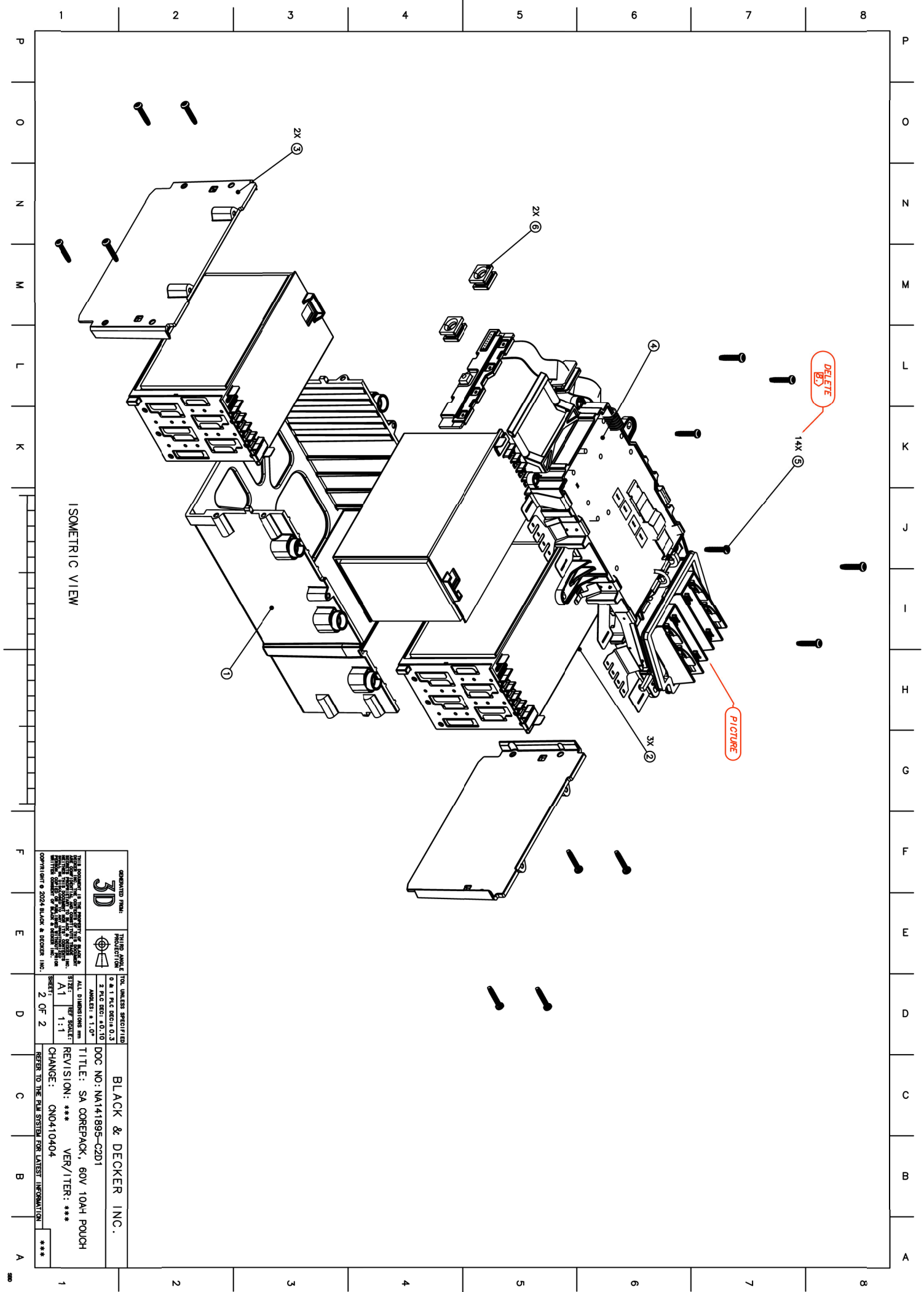
NOTES:

1. ALL MATERIALS MUST COMPLY WITH EST100118.
2. THIS DRAWING IS BASED ON ONE OR MORE REFERENCE 3D MODELS WHICH DEFINE ANY UNDIMENSIONED FEATURE.
3. PART(S) DEFINED BY THIS DRAWING MUST COMPLY WITH SPAP/PR-00429-DOC AND MUST HAVE AN ESTABLISHED QUALITY INSPECTION PROCESS.
4. SOLDERED CONNECTIONS, COMPLIANCE REQUIRED TO ES100008. ALL TINNING AND SOLDERING PROCESSES TO BE LEAD FREE. MATERIALS IN COMPLIANCE WITH THE LATEST ROHS/REEL DIRECTIVE. CERTIFICATE SHALL BE ATTACHED ON SAMPLE ANALYSIS REPORT/SAR OR FPI.
5. (999) (CANADA GLUE) TO BE VISIBLE:
 - 5.1) INSIDE POCKET BEFORE MODULE (9) IS INSTALLED.
 - 5.2) COVERING NTC AFTER MODULE (9) IS INSTALLED.
6. STRAP IS TO BE LASER ETCHED WITH PACK IDENTIFICATION CODE IN ACCORDANCE WITH DOC10241699, IN THE LOCATION SHOWN:
 - 6.1. CHARACTER HEIGHT TO BE MINIMUM OF 3.0. CHARACTER WIDTH TO BE MINIMUM OF 2.0. TOTAL CODE WIDTH SHALL NOT EXCEED 8.5.
7. ALL SCREWS TO BE ASSEMBLED AT A TORQUE OF 1.0 ±0.1 Nm.
 - 7.1) OR CODE CONTAINING USN LASER ETCHED IN AREA SHOWN
9. AN INDIVIDUAL CELL OCV BALANCE OF LESS THAN 10mV SHALL BE CONFIRMED ACROSS ALL CELL HOLDER ASSEMBLIES (2) PRIOR TO ASSEMBLY TO FRAME (1).

RIGHT VIEW

FROM AD

GENERATED FROM:		3D		THIRD ANGLE PROJECTION		TOL. UNLESS SPECIFIED		BLACK & DECKER INC.	
0.8 X 1 P/LC DEC: 0.3		0.8 X 1 P/LC DEC: 0.3		0.8 X 1 P/LC DEC: 0.3		0.8 X 1 P/LC DEC: 0.3		DOC NO: NA141895-C2D1	
ALL DIMENSIONS ARE		ALL DIMENSIONS ARE		ALL DIMENSIONS ARE		ALL DIMENSIONS ARE		TITLE: SA COREPACK, 60V 10AH POUCH	
A1		A1		A1		A1		REVISION: ***	
1 OF 2		1 OF 2		1 OF 2		1 OF 2		VER/ITER: ***	
CHANGE: CND410404		CHANGE: CND410404		CHANGE: CND410404		CHANGE: CND410404		***	
REFER TO THE FILE SYSTEM FOR LATEST INFORMATION		REFER TO THE FILE SYSTEM FOR LATEST INFORMATION		REFER TO THE FILE SYSTEM FOR LATEST INFORMATION		REFER TO THE FILE SYSTEM FOR LATEST INFORMATION		***	



GENERATED FROM:		THIRD ANGLE PROJECTION		TOL. UNLESS SPECIFIED		BLACK & DECKER INC.	
3D				0 & 1 P.L.C DEC: 0.3		DOC NO: NA141895-C2D1	
THIS DOCUMENT IS THE PROPERTY OF BLACK & DECKER INC. IT IS TO BE USED FOR THE DESIGN AND MANUFACTURE OF THE PRODUCT ONLY. IT IS NOT TO BE REPRODUCED OR TRANSMITTED IN ANY FORM OR BY ANY MEANS, ELECTRONIC OR MECHANICAL, INCLUDING PHOTOCOPYING, RECORDING, OR BY ANY INFORMATION STORAGE AND RETRIEVAL SYSTEM, WITHOUT THE WRITTEN PERMISSION OF BLACK & DECKER INC.		ALL DIMENSIONS ARE IN INCHES		ANGLES: ± 1.0°		TITLE: SA COREPACK, 60V 10AH POUCH	
COPYRIGHT © 2024 BLACK & DECKER INC.		SHEET: 2 OF 2		1:1		REVISION: *** VER/ITER: ***	
						CHANGE: CND0410404	
						REFER TO THE FILE SYSTEM FOR LATEST INFORMATION	
