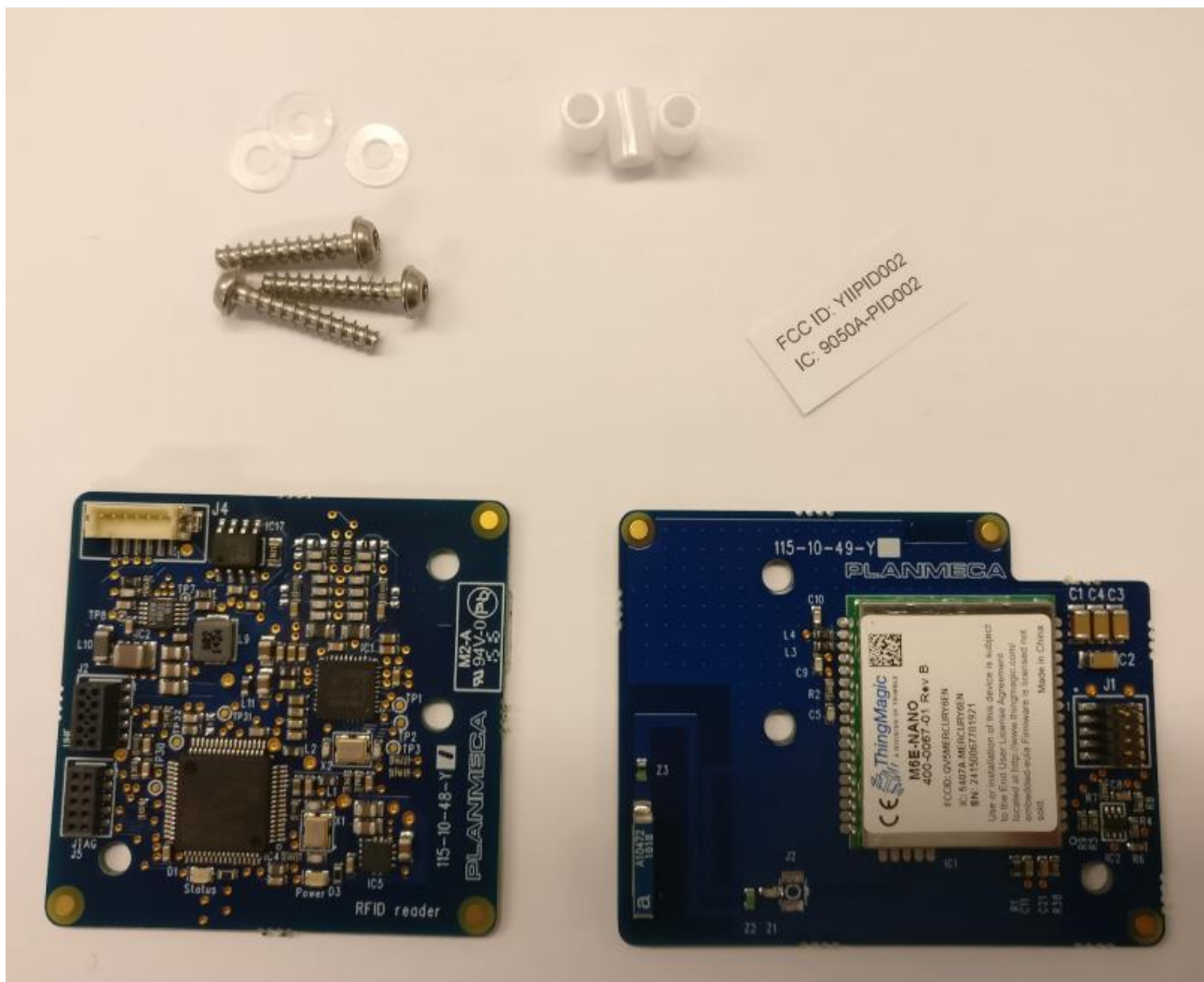


PlanID electronics assembly instructions

Before starting assembly, please check that all needed materials are available.

Following items are needed for final assembly:

- 3pcs 00327073 WN1451 K30x16 A2 screw
- 3pcs 30004511 DIN125A 3.2 PA washer
- 3pcs 30004475 Spacer 3.1x5x7.5mm
- 1pcs 10040271 115-49 RFID Reader UHF Extension PCB
- 1pcs 10039929 115-48 RFID reader PCB
- 1pcs 30005779 ID label
- 1pcs 00326248 ISO 7380 M3x6 A2 screw
- 1pcs 30005777 Host ID label



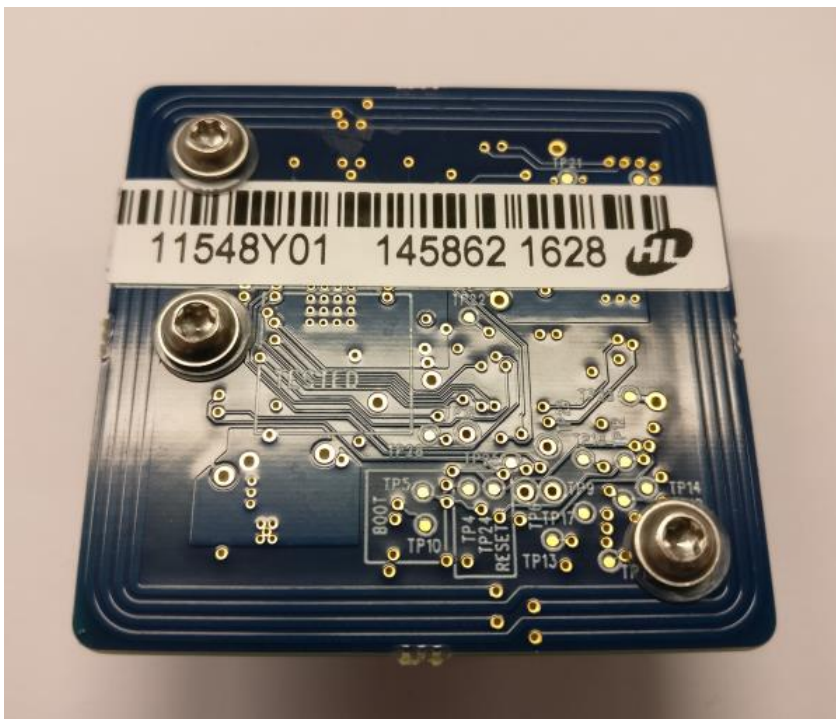
Picture 1: Needed materials for assembling the PlanID reader (excluding 00326248, 30005777).

1. Stick the 30005779 ID label to 115-10-49-Y1 PCB as shown in picture Picture 2.



Picture 2: Label sticked on module.

2. Add 30004511 DIN125A 3.2 PA washer under the 00327073 WN1451 K30x16 A2 screw and install into 115-10-48-Y1 PCB as shown in Picture 3.



Picture 3: Washers installed between screws and PCB.

3. Add 3pcs spacers. Fit 115-10-48-Y1 and 115-10-49-Y1 PCBs together. See Picture 4 and Picture 5.



Picture 4: Spacers installed.



Picture 5: Reader electronics ready.

4. Insert supply cable to assembled electronics. See Picture 6.



Picture 6: Cable assembled.

5. Screw the 3pcs screws into assembly housing.



Picture 7: PCBs installed to housing.

6. Assemble the front cover using 00326248 M3x6 A2 screw.



Picture 8: Assembly finished.

7. Stick the 30005777 label to the treatment unit base as shown on Picture 9.



Picture 9: Host label placement.