

# Wi-Fi Window/Door Sensor

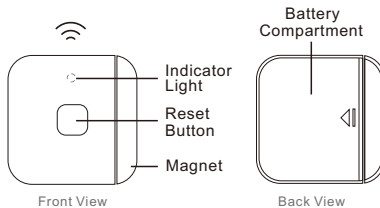
RL-WD01



Version 1.1

## Package Contents

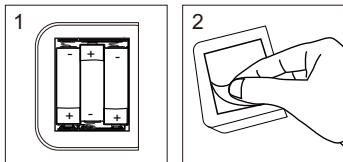
Main Unit\*1 Magnet\*1 3M sticker\*1



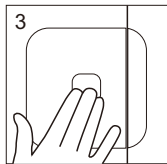
— 1 —

## Installation

1. Install AAA alkaline batteries.
2. Paste the 3M sticker (included) onto the back of the main unit.



3. Attach the main unit onto the door. Make sure the magnet is aligned with the main unit.



### NOTE:

- Alkaline batteries are recommended.
- The product is for indoor use only. Do not install outside.

— 2 —

## Operating Instructions

### A. Downloading the APP

Download the APP to your smart mobile phone by one of the following methods:

1. On your mobile phone go to the App Store or Google Play. Then, do a search for "TuyaSmart".
2. Scan the QR code below to download.



TuyaSmart

Android 5.0 / iOS 8.0 or higher

### B. Adding the Device

1. Place the main unit next to the home router (2.4G WiFi) and ensure batteries are installed. Press and hold the button on the unit for 5s and then the indicator light will flash red rapidly, indicating that the unit is in the WiFi Configuration status.

— 3 —

2. Please connect your mobile phone and the device to the same WiFi network, and then launch the APP "TuyaSmart".
3. It is recommended to enable the bluetooth function of your mobile phone before launch the APP, so that the device will be automatically detected easier.

### NOTE:

If failed to detect the device, follow the instructions below to add the device.

### Two Methods of Adding the Device

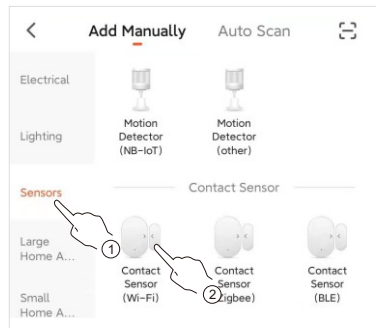
#### a. Auto Scan

1. Enable the bluetooth function of your mobile phone.
2. The device is in WiFi Configuration state.
3. On the APP's home page, tap "+" at the upper right corner and then tap "Auto Scan"...

#### b. Add Manually

1. The device is in WiFi Configuration state.
2. On the APP's home page, tap "+" at the upper right corner and then tap "Add Manually".
3. Product type: Sensors > Contact Sensor (Wi-Fi).

— 4 —



4. Enter the WiFi account and password. Select the network configuration method (EZ mode or AP mode) according to the indicator light.

### NOTE:

The step-by-step instructions on the app may slightly vary due to the app update. Simply follow the actual instructions on the app when adding the device.

— 5 —

## C. APP FAQ

### 1. The APP cannot find a new device when adding the device.

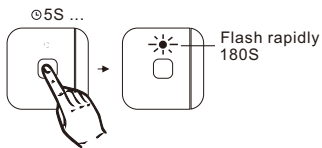
- 1) Please check whether the network you connected is 2.4GWiFi.
- 2) Please check whether the WiFi password you typed is correct.
- 3) If the above operation is correct, reset the device and add it again.

### 2. Device Reset

#### a. EZ mode

In the standby state:

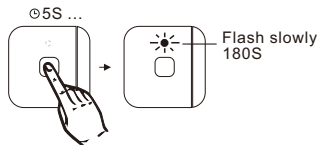
Press and hold the Reset button for above 5s, the indicator light will flash rapidly to indicate network has been reset and is entering to EZ mode.



#### b. AP mode

Under the EZ mode, press and hold the Reset button again for above 5s, the indicator light will flash slowly to indicate that

you have switched to AP mode.



Pressing and holding the Reset button again for above 5s can return to EZ mode.

## D. Description of Functions

### 1. How does It Work

When the magnet is separated from or reattached to the main unit, the unit will turn on the green indicator light and push an alert to your mobile phone through Wi-Fi.

### 2. Low Battery Indicator:

When the battery voltage level is low (<15%), a push notification will be sent to the APP for an alert. Please replace batteries immediately.

3. When the magnet is separated from or reattached to the main unit, it will attempt to connect to the network. If connecting to the APP is failed, it will enter into standby state.

### 4. Indicator Light:

- Flash red rapidly: WiFi configuration in EZ mode (2 blinks/second).
- Flash red slowly: WiFi configuration in AP mode (1 blink/second).
- Flash green: The magnet is separated from or reattached to the main unit.

## Technical Specifications

Battery	DC 4.5V (AAA*3)
Standby Current	<30uA
Max Operating Current	<90mA
Wireless Protocol	WiFi2.4GHz
Working Temperature	-10~50°C
Wireless Distance between the Device and Router	Open Area: 60~80m
Gap between magnet and main unit for triggering	5~10mm

## Troubleshooting

1. If the APP fails to receive messages after the device is triggered, please check the WiFi to see if it works properly.
2. If no push notifications are received after the device is triggered, please check your mobile phone to see if it has enabled the "Allow Notification" function.

## CAUTION



- Batteries may leak harmful liquids or ignitable materials or explode causing injury and product damage
- Do not mix old and new or other battery types
- Replace all batteries at the same time
- Remove batteries if product is to be unused for extended periods of time

## FCC Warnings

**Warning:** Changes or modifications to this unit not expressly approved by the party responsible for compliance could void the user's authority to operate the equipment.

This device complies with Part 15 of the FCC Rules. Operation is subject to the following two conditions:

- (1) this device may not cause harmful interference
- (2) this device must accept any interference received, including interference that may cause undesired operation.

Shielded cables must be used with this unit to ensure compliance with the Class B FCC limits.

### NOTE:

This equipment has been tested and found to comply with the limits for a Class B digital device, pursuant to Part 15 of the FCC Rules. These limits are designed to provide reasonable protection against harmful interference in a residential installation.

This equipment generates, uses and can radiate radio frequency energy and, if not installed and used in accordance with the instructions, may cause harmful interference to radio communications. However, there is no guarantee that interference will not occur in a particular installation. If this equipment does cause harmful interference to radio or television reception, which can be determined by turning the equipment off and on, the user is encouraged to try to correct the interference by one or more of the following measures:

- Reorient or relocate the receiving antenna.
- Increase the separation between the equipment and receiver.
- Connect the equipment into an outlet on a circuit different from that to which the receiver is connected.
- Consult the dealer or an experienced radio/TV technician for help.

To maintain compliance with FCC's RF Exposure guidelines, This equipment should be installed and operated with minimum distance between 20cm the radiator your body: Use only the supplied antenna.

