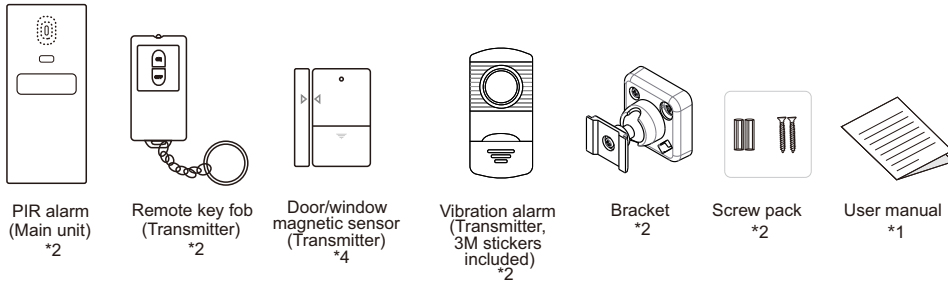


PIR ALARM KIT

RL-9830G4

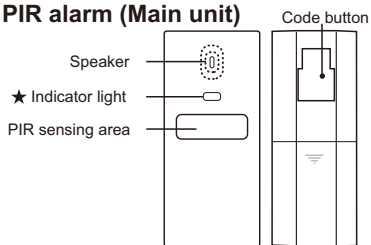
Version 1.0

Package Contents



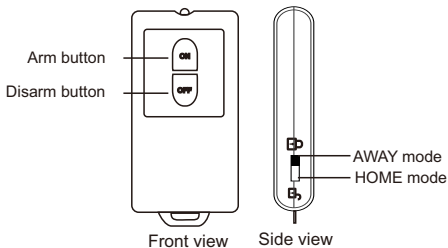
- Before using the product, please remove the insulation sheets from all transmitters.
- 2 screws together with 2 plastic plugs (for installing the main unit brackets) and 4 3M stickers (for door/window magnetic sensors) are included in each screw pack.
- The main unit includes a receiver module and a transmitter module inside.

PIR alarm (Main unit)

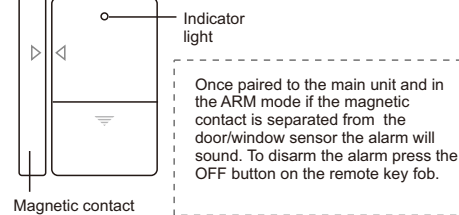


- ★ **Alarm indicator:** When the main unit sounds an alarm, the light will flash quickly along with the alarm sound.
- Low battery indicator:** When the batteries installed in the main unit reach a low level, i.e., less than 3.3V, the light will flash slowly (time interval of 3 seconds). Please replace batteries immediately when the low battery indicator light flashes.

Remote key fob (Transmitter)

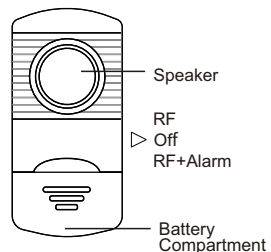


Door/window magnetic sensor (Transmitter)



Once paired to the main unit and in the ARM mode if the magnetic contact is separated from the door/window sensor the alarm will sound. To disarm the alarm press the OFF button on the remote key fob.

Vibration alarm (Transmitter)



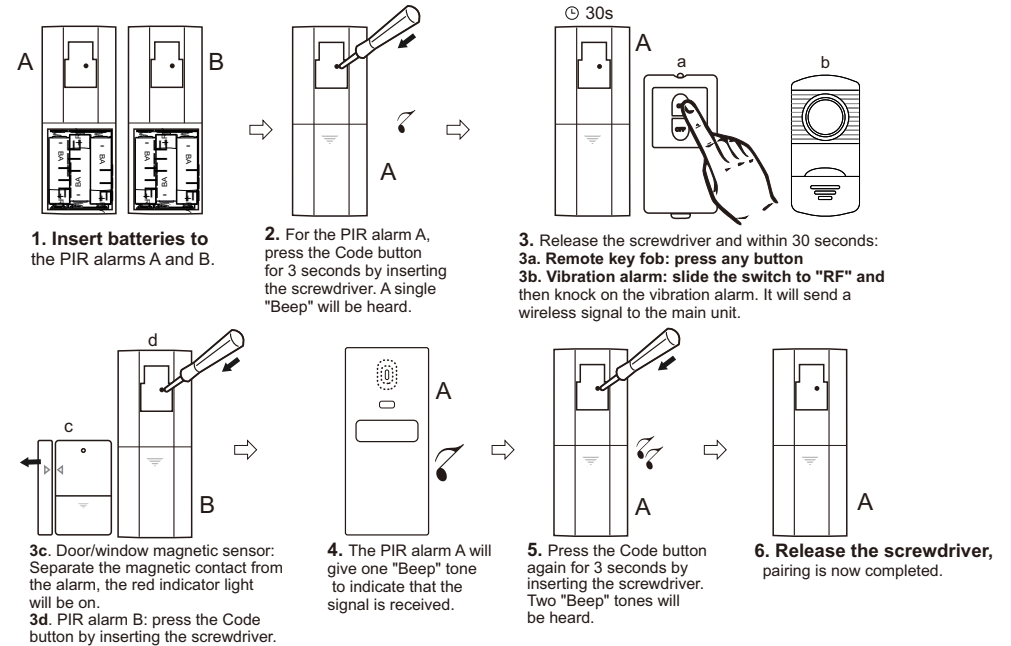
Once paired to the main unit and in the ARM mode if the vibration alarm is triggered by a vibration, it will sound or send a wireless signal to the main unit. The main unit will sound when it receives the wireless signal from the vibration alarm. To disarm the alarm press the OFF button on the remote key fob.

Switch Operation:

- OFF:** Power off.
- RF:** When triggered, it itself will not sound but will send a wireless signal to the main unit.
- RF+ALARM:** Three "Beep" tones will be heard when powered. When triggered, it will send a wireless signal to the main unit and after 2 seconds it itself will also sound for 8 seconds.

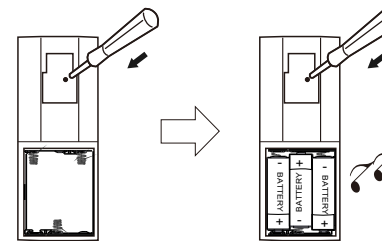
1

Pairing the Transmitters to the PIR Alarm



Also pair the transmitters to the PIR alarm B by following the steps above. You can add up to 32 transmitters to each PIR alarm.

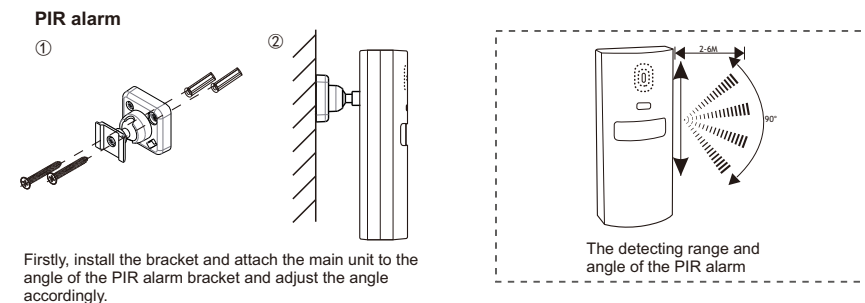
Clearing Code



The PIR alarm A or B Press and hold the Code button by inserting the screwdriver (as above) before installing the batteries. Insert batteries you will hear two "Beep" tones that will confirm that the clearing code has been successful.

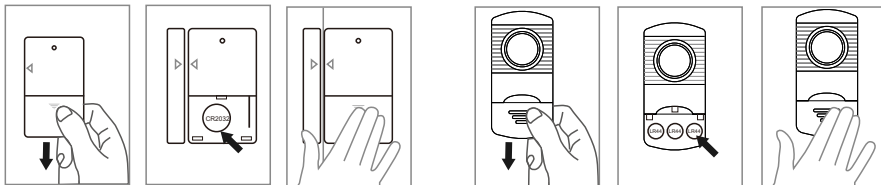
NOTE: The above will clear the code for all paired transmitters.

Installation



Firstly, install the bracket and attach the main unit to the angle of the PIR alarm bracket and adjust the angle accordingly.

2



Door/window magnetic sensor
 1. Open the battery compartment to insert a battery.
 2. Fix the unit on the door or window by using a 3M sticker.

Vibration Alarm
 1. Open the battery compartment to insert batteries.
 2. Fix the unit on the window by using a 3M sticker.

Arming/Disarming via Remote Key Fobs

Remote Key Fob: Press "ON" to ARM the unit, "OFF" to DISARM the unit.
 Switch: " " into the AWAY mode while " " is the HOME mode.

1) AWAY Mode

Slide the switch to " " AWAY mode and press "ON", the main unit will give one "Beep" tone. After 30 seconds, the unit will enter into the ARM mode. If the door/window installed with the magnetic sensor is opened or the window installed with the vibration alarm is knocked or someone enters the property and the PIR alarm detects the intrusion, the PIR alarm will sound. To disarm the alarm press "OFF" on the remote key fob. When the PIR alarm receives the DISARM command, it will give two "Beep" tones and if it is in the ALARM status, the sound will be immediately turned off.

2) HOME Mode

For use in the HOME mode you must use the door/window magnetic sensors or the vibration alarm. Slide the switch to " " HOME mode and press "ON", the main unit will give one "Beep" tone. After 30 seconds, the unit will enter into the ARM mode. NOTE: In this mode the PIR sensor is disabled, therefore, your windows and doors are protected by magnetic sensors or vibration alarms whilst you are in the property. If a door or window is opened or knocked, the alarm will sound. To disarm the alarm press "OFF" on the remote key fob.

NOTE: The description above is only for the system with one PIR alarm. If you want 2 PIR alarms in the system and want them to be interlinked, they both must be paired to each other and be paired to the transmitters respectively. After, you must arm 2 PIR alarms with the remote key fob. Once armed, 2 PIR alarms will sound if any transmitter is triggered. In the AWAY mode, no matter which PIR alarm detects human movements, 2 PIR alarms will sound.

Remote key fobs can only turn off the sound of the PIR alarm. The sound of the vibration alarm, however, will be auto stopped after 8 seconds.

Technical Specifications

| PIR alarm (Main unit) | |
|-----------------------------|-----------------------------|
| Working Voltage | DC 4.5V(1.5V/AA/LR6*3) |
| Working Current | ≤100mA |
| Standby Current | ≤0.5mA |
| Low Voltage Indicator | ≤3.3V |
| Alarm Volume | ≥100dB(30cm) |
| Wireless Frequency | 433.92MHz±250KHz |
| Infrared Detective Distance | ≤6m |
| Infrared Alarm Angle | ≥100° |
| Arm Mode | Arming delays 30s each time |
| Alarm Mode | Alarm once triggered |
| Alarm Time | 30s each time |
| Wireless Distance | ≥30m (no barrier) |

| | Remote key fob (Transmitter) | Door/window magnetic sensor (Transmitter) | Vibration alarm (Transmitter) |
|---------------------------------|------------------------------|---|-------------------------------|
| Working Voltage | DC 3.0V(CR2032) | DC 3.0V(CR2032) | 4.5 V (3x battery LR44) |
| Standby Current | <2uA | ≤ 10uA | ≤ 6uA |
| Working Current | ≤12mA | ≤ 15mA | RF: <15mA RF+ALARM: <100mA |
| Working Frequency | 433.92MHz±250KHz | 433.92MHz±250KHz | 433.92MHz±250KHz |
| Working Distance | >30m(no barrier) | ≥80m (no barrier) | ≥80m (no barrier) |
| Alarm Volume (30cm) | / | / | >95dB |
| Time Interval of Each Vibration | / | / | ≈5s |

Tips

- Recommended installation height: 1.6±0.3m, adjust the installation angle to face downward.
- Do not install the product in direct sunlight or close to a radiator or heat source.
- The detection range of the PIR alarm may vary slightly due to different environments.
- Do not attempt to repair this product, please return to your retailer
- According to the co-channel interference principle, the receive distance may be affected if a strong interference signal exists within the using area.
- If a car is travelling nearby, the receive distance may be affected as well..
- Remove batteries if the product is not in use for a long time and dispose the batteries according to the local laws and regulations.

Troubleshooting

- 1. The main unit false alarms.**
 - Check if any animals are in the vicinity of the PIR sensor, During warm weather moving shadows may also activate the alarm. Make sure that the PIR sensor is not positioned near a radiator or heat source.
 - Check if any appliances within the property are emitting a strong electromagnetic field near the door/window magnetic contact. Strong electromagnetic fields may cause the door/window magnetic contact to false alarm.
- 2. The main unit cannot receive the signal sent from the transmitter (remote key fob or door/window magnetic contact).**
 - Check if the pairing between the transmitter and the main unit has been successful.
 - If the pairing was successful, check the battery voltage for both the main unit and the transmitter. Low voltage will cause the product to fail.
- 3. When the PIR alarm detects movement, however, no alarm sounds.**
 - Check if the low battery indicator is flashing (please replace batteries immediately).
 - If the unit is armed and set in the HOME mode and the PIR sensor detects an intrusion the alarm will not sound. The PIR is disabled in the HOME mode.
 - Check if the main unit is installed correctly.

FCC Statement

Warning: Changes or modifications to this unit not expressly approved by the party responsible for compliance could void the user's authority to operate the equipment.

NOTE: This equipment has been tested and found to comply with the limits for a Class B digital device, pursuant to Part 15 of the FCC Rules. These limits are designed to provide reasonable protection against harmful interference in residential installation. This equipment generates, uses and can radiate radiofrequency energy and, if not installed and used in accordance with the instructions, may cause harmful interference to radio communications. However, there is no guarantee that interference will not occur in a particular installation. If this equipment does cause harmful interference to radio or television reception, which can be determined by turning the equipment off and on, the user is encouraged to try to correct the interference by one or more of the following measures:

- Reorient or relocate the receiving antenna.
- Increase the separation between the equipment and receiver.
- Connect the equipment into an outlet on a circuit different from that to which the receiver is connected.
- Consult the dealer or an experienced radio/TV technician for help

The device must not be co-located or operating in conjunction with any other antenna or transmitter. This device complies with Part 15 of the FCC Rules. Operation is subject to the following two conditions:

- (1) this device may not cause harmful interference, and
- (2) this device must accept any interference received, including interference that may cause undesired operation.