

Wireless Remote Control Doorbell

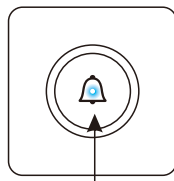
RL-3881

Version 1.0

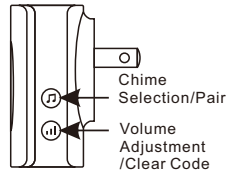
Package Contents

Package Contents: Receiver×1, Remote Control×1, 3M sticker x1, Battery (CR2032)×1

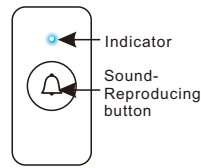
① Receiver



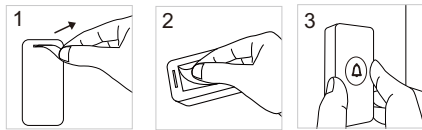
Indicator



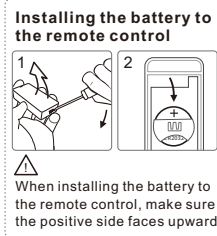
② Remote Control



Installing the Remote Control:



1. Remove the insulation sheet from the back of the unit.
2. Paste the 3M sticker supplied on the back of the unit.
3. Paste the unit on the wall or door.



INSTRUCTIONS

1. **Chime Selection:** Press "Ⓜ" on the side of the receiver to play the next chime. 38 of chime quantity for option.
2. **Volume Adjustment:** Press "Ⓜ" on the side of the receiver to adjust the volume. High/Medium/Low levels for option.
3. **Pairing:** Long press "Ⓜ" on the side of the receiver for over 3 seconds, the indicator on the receiver will flash to indicate that it has entered into the pairing state. Now, press the Sound-Reproducing button on the remote control, when the receiver sounds the chime selected, the pairing is successful (Follow the instruction to pair one remote control to the receiver. To pair more, repeat the instruction. Max 20 remote controls can be paired to one receiver)
4. **Clearing Code:** Long press "Ⓜ" on the side of the receiver

for over 8 seconds, it will sound "Ding-Dong, Ding-Dong" to indicate that clearing code is successful (This action will clear the code for all remote controls).

5. **Power Indicator:** If the receiver is power on for the first time, it will sound "Ding-Dong" to indicate that connecting to power supply works well.
6. **Indicator Light:** When the receiver plays a chord, the indicator on its front will flash in accordance with the chord. When pressing the Sound-Reproducing button on the remote control, the indicator light on the remote control will be on.

TECHNICAL SPECIFICATIONS

① Receiver

Power	AC 100V~240V
Standby Power Consumption	0.5W
Working Power Consumption	1W
Volume (30cm)	Low: 60-70dB Medium: 70-80dB High: 80-90dB
Demodulation	FSK
Frequency	433.92MHz±250KHz
Distance	≥ 150m(Open Area)
Receiving Sensitivity	-115dBm
Working Temperature	-10°C~50°C

② Remote Control

Battery	DC 3V (CR2032*1)
Standby Current	<2uA
Working Current	<30mA
Transmitting Power	+10dBm
Transmitting Time	2s/transmission
Antenna Gain	2dBi
Working Temperature	-10°C~50°C

FCC Statement

Warning: Changes or modifications to this unit not expressly approved by the party responsible for compliance could void the user's authority to operate the equipment.

NOTE: This equipment has been tested and found to comply with the limits for a Class B digital device, pursuant to Part 15 of the FCC Rules. These limits are designed to provide reasonable protection against harmful interference in residential installation. This equipment generates, uses and can radiate radiofrequency energy and, if not installed and used in accordance with the instructions, may cause harmful interference to radio communications. However, there is no guarantee that interference will not occur in a particular installation. If this equipment does cause harmful interference to radio or television reception, which can be determined by turning the equipment off and on, the user is encouraged to try to correct the interference by one or more of the following measures:

- Reorient or relocate the receiving antenna.
- Increase the separation between the equipment and receiver.
- Connect the equipment into an outlet on a circuit different from that to which the receiver is connected.
- Consult the dealer or an experienced radio/TV technician for help.

The device must not be co-located or operating in conjunction with any other antenna or transmitter.

This device complies with Part 15 of the FCC Rules. Operation is subject to the following two conditions:

- (1) this device may not cause harmful interference, and
- (2) this device must accept any interference received, including interference that may cause undesired operation.