

FCC TEST REPORT

Product Name: Mobile Phone
Trade Mark: BLU
Model No.: Z4 MUSIC
Report Number: 2303234526RFM-1
Test Standards: FCC 47 CFR Part 22 Subpart H
 FCC 47 CFR Part 24 Subpart E
FCC ID: YHLBLUZ4M253
Test Result: PASS
Date of Issue: April 20, 2023

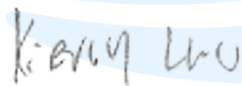
Prepared for:

BLU Products, Inc.
8600 NW 36th Street, Suite #200 Doral, FL 33166

Prepared by:

Shenzhen UnionTrust Quality and Technology Co., Ltd.
**Unit D/E of 9/F and 16/F, Block A, Building 6, Baoneng science and
 technology park, Longhua district, Shenzhen, China**
TEL: +86-755-2823 0888
FAX: +86-755-2823 0886

Prepared by:



 Kieron Luo
 Project Engineer

Reviewed by:



 Henry Lu
 Team Leader

Approved by:



 Kevin Liang
 Assistant Manager

Date:

April 20, 2023

Shenzhen UnionTrust Quality and Technology Co., Ltd.

Address: Unit D/E of 9/F and 16/F, Block A, Building 6, Baoneng science and technology park, Longhua district, Shenzhen, China

Tel: +86-755-28230888

Fax: +86-755-28230886

E-mail: info@uttlab.com

<http://www.uttlab.com>

UTTR-RF-FCC23G-V1.1

Version

Version No.	Date	Description
V1.0	April 20, 2023	Original



CONTENTS

1. GENERAL INFORMATION	4
1.1 CLIENT INFORMATION	4
1.2 EUT INFORMATION	4
1.2.1 GENERAL DESCRIPTION OF EUT	4
1.2.2 DESCRIPTION OF ACCESSORIES.....	4
1.3 PRODUCT SPECIFICATION SUBJECTIVE TO THIS STANDARD	5
1.4 DESCRIPTION OF SUPPORT UNITS	5
1.5 TEST LOCATION	5
1.6 TEST FACILITY	5
1.7 DEVIATION FROM STANDARDS	6
1.8 ABNORMALITIES FROM STANDARD CONDITIONS	6
1.9 OTHER INFORMATION REQUESTED BY THE CUSTOMER	6
1.10 MEASUREMENT UNCERTAINTY	6
2. TEST SUMMARY	7
3. EQUIPMENT LIST	8
4. TEST CONFIGURATION	9
4.1 ENVIRONMENTAL CONDITIONS FOR TESTING	9
4.2 TEST SETUP	10
4.2.1 FOR RADIATED EMISSIONS TEST SETUP	10
4.2.2 FOR CONDUCTED RF TEST SETUP	11
4.3 TEST CHANNELS	12
4.4 SYSTEM TEST CONFIGURATION	13
4.5 PRE-SCAN	13
5. RADIO TECHNICAL REQUIREMENTS SPECIFICATION	14
5.1 REFERENCE DOCUMENTS FOR TESTING	14
5.2 MAXIMUM ERP/EIRP	15
5.3 CONDUCTED OUTPUT POWER	16
5.4 PEAK-TO-AVERAGE RATIO	17
5.5 99%&26dB BANDWIDTH	19
5.6 BAND EDGE AT ANTENNA TERMINALS	21
5.7 SPURIOUS EMISSIONS AT ANTENNA TERMINALS	23
5.8 FIELD STRENGTH OF SPURIOUS RADIATION	25
5.9 FREQUENCY STABILITY	28
APPENDIX 1 PHOTOS OF TEST SETUP	30
APPENDIX 2 PHOTOS OF EUT CONSTRUCTIONAL DETAILS	30

1. GENERAL INFORMATION

1.1 CLIENT INFORMATION

Applicant:	BLU Products, Inc.
Address of Applicant:	8600 NW 36th Street, Suite #200 Doral, FL 33166
Manufacturer:	Luzhou chiteng technology co.,LTD
Address of Manufacturer:	Building16, No.1, 6 Section of Wine Valley Avenue, Jiayang District, Luzhou, Sichuan

1.2 EUT INFORMATION

1.2.1 General Description of EUT

Product Name:	Mobile Phone	
Model No.:	Z4 MUSIC	
Trade Mark:	BLU	
DUT Stage:	Identical Prototype	
EUT Supports Function: (Provided by the customer)	GSM Bands:	GSM850/1900
	2.4 GHz ISM Band:	Bluetooth V2.1 + EDR
Sample Received Date:	March 23, 2023	
Sample Tested Date:	March 23, 2023 to April 4, 2023	

Remark: The above EUT's information was provided by customer. Please refer to the specifications or user's manual for more detailed description.

1.2.2 Description of Accessories

Adapter	
Model No.:	US-GL-0500
Input:	100-240 V~50/60 Hz 0.2 A
Output:	5.0 V --- 500 mA
DC Cable:	1.0 Meter, Unshielded without ferrite

Battery	
Model No.:	N5C800T
Battery Type:	Lithium-ion
Rated Voltage:	3.7 Vdc
Limited Charge Voltage:	4.2 Vdc
Rated Capacity:	800 mAh

1.3 PRODUCT SPECIFICATION SUBJECTIVE TO THIS STANDARD

Support Networks:	GSM	
Type of Modulation:	GSM:	GMSK
Frequency Range:	GSM 850:	824.2-848.8 MHz
	GSM 1900:	1850.2-1909.8 MHz
Max RF Output Power:	GSM 850:	32.52 dBm
	GSM 1900:	29.70 dBm
Emission Designator:	GSM 850:	244KGXW
	GSM 1900:	236KGXW
Antenna Type:	PIFA Antenna	
Antenna Gain: (Provided by the customer)	GSM 850:	0.44 dBi
	PCS 1900:	0.86 dBi
Normal Test Voltage:	3.7 Vdc	
Extreme Test Voltage:	3.4 to 4.2Vdc	
Extreme Test Temperature:	-30 °C to +50 °C	

1.4 DESCRIPTION OF SUPPORT UNITS

The EUT has been tested with associated equipment below.

1) Support Cable

Cable No.	Description	Connector	Length	Supplied by
1	Antenna Cable	SMA	0.1 Meter	Applicant

1.5 TEST LOCATION

Shenzhen UnionTrust Quality and Technology Co., Ltd.

Address: Unit D/E of 9/F and 16/F, Block A, Building 6, Baoneng science and technology park, Longhua district, Shenzhen, China

Telephone: +86 (0) 755 2823 0888

Fax: +86 (0) 755 2823 0886

1.6 TEST FACILITY

The test facility is recognized, certified, or accredited by the following organizations:

CNAS-Lab Code: L9069

The measuring equipment utilized to perform the tests documented in this report has been calibrated once a year or in accordance with the manufacturer's recommendations, and is traceable under the ISO/IEC 17025 to international or national standards. Equipment has been calibrated by accredited calibration laboratories.

A2LA-Lab Certificate No.: 4312.01

Shenzhen UnionTrust Quality and Technology Co., Ltd. has been accredited by A2LA for technical competence in the field of electrical testing, and proved to be in compliance with ISO/IEC 17025 General Requirements for the Competence of Testing and Calibration Laboratories and any additional program requirements in the identified field of testing.

Shenzhen UnionTrust Quality and Technology Co., Ltd.

Address: Unit D/E of 9/F and 16/F, Block A, Building 6, Baoneng science and technology park, Longhua district, Shenzhen, China

Tel: +86-755-28230888

Fax: +86-755-28230886

E-mail: info@uttlab.com

<http://www.uttlab.com>

UTTR-RF-FCC23G-V1.1

ISED Wireless Device Testing Laboratories

CAB identifier: CN0032

FCC Accredited Lab.

Designation Number: CN1194

Test Firm Registration Number: 259480

1.7 DEVIATION FROM STANDARDS

None.

1.8 ABNORMALITIES FROM STANDARD CONDITIONS

None.

1.9 OTHER INFORMATION REQUESTED BY THE CUSTOMER

None.

1.10 MEASUREMENT UNCERTAINTY

Where relevant, the following measurement uncertainty levels have been estimated for tests performed on the Product as specified in CISPR 16-4-2. This uncertainty represents an expanded uncertainty expressed at approximately the 95% confidence level using a coverage factor of k=2.

No.	Item	Measurement Uncertainty
1	Conducted emission 9kHz-150kHz	±3.2 dB
2	Conducted emission 150kHz-30MHz	±2.7 dB
3	Radiated spurious emissions 30MHz-1GHz	± 4.9 dB
4	Radiated spurious emissions 1GHz-18GHz	± 4.8 dB
5	Radiated spurious emissions 18GHz-40GHz	± 5.1 dB
6	Occupied Bandwidth	± 1.86 %
7	DC Supply Voltages	± 0.68 %
8	Temperature	± 0.62 °C
9	Humidity	± 3.9 %
10	Conducted spurious emissions	± 2.7 dB
11	DC Supply Voltages	± 0.68 %
12	AC Supply Voltages	± 1.2 %
13	Radio Frequency	± 6.5 x 10 ⁻⁸
14	RF Power, Conducted	± 0.68 dB

Shenzhen UnionTrust Quality and Technology Co., Ltd.

Address: Unit D/E of 9/F and 16/F, Block A, Building 6, Baoneng science and technology park, Longhua district, Shenzhen, China

Tel: +86-755-28230888

Fax: +86-755-28230886

E-mail: info@uttlab.com

<http://www.uttlab.com>

UTTR-RF-FCC23G-V1.1

2. TEST SUMMARY

FCC 47 CFR Part 22 Subpart H Test Cases			
Test Item	Test Requirement	Test Method	Result
Effective Radiated Power (ERP)	FCC 47 CFR Part 2.1046(a) & FCC 47 CFR Part 22.913(a)	ANSI C63.26-2015 & KDB 971168 D01v03r01	PASS
Conducted Output Power	FCC 47 CFR Part 2.1046(a) & FCC 47 CFR Part 22.913(a)	ANSI C63.26-2015 & KDB 971168 D01v03r01	PASS
Peak-to-average ratio	FCC 47 CFR Part 22.913(a)	ANSI C63.26-2015 & KDB 971168 D01v03r01	PASS
99%&26dB Bandwidth	FCC 47 CFR Part 2.1049(h)	ANSI C63.26-2015 & KDB 971168 D01v03r01	PASS
Band Edge at antenna terminals	FCC 47 CFR Part 2.1051 & FCC 47 CFR Part 22.917(a)	ANSI C63.26-2015 & KDB 971168 D01v03r01	PASS
Spurious emissions at antenna terminals	FCC 47 CFR Part 2.1051 & FCC 47 CFR Part 22.917(a)(b)	ANSI C63.26-2015 & KDB 971168 D01v03r01	PASS
Field strength of spurious radiation	FCC 47 CFR Part 2.1053 & FCC 47 CFR Part 22.917(a)(b)	ANSI C63.26-2015 & KDB 971168 D01v03r01	PASS
Frequency stability	FCC 47 CFR Part 2.1055 & FCC 47 CFR Part 22.355	ANSI C63.26-2015 & KDB 971168 D01v03r01	PASS
Disclaimer and Explanations: The declared of product specification and data (e.g. antenna gain, RF specification, etc) for EUT presented in the report are provided by the customer, and the customer takes all the responsibilities for the accuracy of product specification.			

FCC 47 CFR Part 24 Subpart E Test Cases			
Test Item	Test Requirement	Test Method	Result
Equivalent Isotropic Radiated Power (EIRP)	FCC 47 CFR Part 2.1046(a) & FCC 47 CFR Part 24.232(c)	ANSI C63.26-2015 & KDB 971168 D01v03r01	PASS
Conducted Output Power	FCC 47 CFR Part 2.1046(a) & FCC 47 CFR Part 24.232(c)	ANSI C63.26-2015 & KDB 971168 D01v03r01	PASS
Peak-to-average ratio	FCC 47 CFR Part 24.232(d)	KDB 971168 D01v03r01	PASS
99%&26dB Bandwidth	FCC 47 CFR Part 2.1049(h) & FCC 47 CFR Part 24.238(b)	ANSI C63.26-2015 & KDB 971168 D01v03r01	PASS
Band Edge at antenna terminals	FCC 47 CFR Part 2.1051 & FCC 47 CFR Part 24.238(a)	ANSI C63.26-2015 & KDB 971168 D01v03r01	PASS
Spurious emissions at antenna terminals	FCC 47 CFR Part 2.1051 & FCC 47 CFR Part 24.238(a)(b)	ANSI C63.26-2015 & KDB 971168 D01v03r01	PASS
Field strength of spurious radiation	FCC 47 CFR Part 2.1053 & FCC 47 CFR Part 24.238(a)(b)	ANSI C63.26-2015 & KDB 971168 D01v03r01	PASS
Frequency stability	FCC 47 CFR Part 2.1055 & FCC 47 CFR Part 24.235	ANSI C63.26-2015 & KDB 971168 D01v03r01	PASS
Disclaimer and Explanations: The declared of product specification and data (e.g. antenna gain, RF specification, etc) for EUT presented in the report are provided by the customer, and the customer takes all the responsibilities for the accuracy of product specification.			

3. EQUIPMENT LIST

Radiated Emission Test Equipment List						
Used	Equipment	Manufacturer	Model No.	Serial Number	Cal. date (mm dd, yyyy)	Cal. Due date (mm dd, yyyy)
<input checked="" type="checkbox"/>	3m SAC	ETS-LINDGREN	3m	Euroshiedpn-C T001270-1317	22-Jan-2021	21-Jan-2024
<input checked="" type="checkbox"/>	Receiver	R&S	ESIB26	100114	3-Nov-2022	2-Nov-2023
<input type="checkbox"/>	Loop Antenna	ETS-LINDGREN	6502	00202525	11-Nov-2021	10-Nov-2023
<input checked="" type="checkbox"/>	Broadband Antenna	ETS-LINDGREN	3142E	00201566	11-Nov-2021	10-Nov-2023
<input checked="" type="checkbox"/>	6dB Attenuator	Talent	RA6A5-N-18	18103001	11-Nov-2021	10-Nov-2023
<input checked="" type="checkbox"/>	Double-Ridged Waveguide Horn Antenna (Pre-amplifier)	ETS-LINDGREN	3117-PA	00201541	17-Apr-2022	16-Apr-2024
<input checked="" type="checkbox"/>	Pre-amplifier	ETS-Lindgren	00118385	00201874	1-Nov-2022	31-Oct-2023
<input checked="" type="checkbox"/>	Double-Ridged Waveguide Horn Antenna (Pre-amplifier)	ETS-LINDGREN	3116C-PA	00202652	21-Nov-2022	20-Nov-2023
<input checked="" type="checkbox"/>	Pre-amplifier	ETS-Lindgren	00118384	00202652	21-Nov-2022	20-Nov-2023
<input checked="" type="checkbox"/>	Multi device Controller	ETS-LINDGREN	7006-001	00160105	N/A	N/A
<input checked="" type="checkbox"/>	Test Software	Audix	e3	Software Version: 9.160323		

RF Test Equipment List						
Used	Equipment	Manufacturer	Model No.	Serial Number	Cal. date (mm dd, yyyy)	Cal. Due date (mm dd, yyyy)
<input checked="" type="checkbox"/>	Spectrum Analyzer	R&S	FSV40-N	101653	Apr. 15, 2022	Apr. 14, 2023
<input checked="" type="checkbox"/>	EXA Spectrum Analyzer	KEYSIGHT	N9010A	MY51440197	Apr. 15, 2022	Apr. 14, 2023
<input checked="" type="checkbox"/>	Wideband Radio Communication Tester	R&S	CMW500	120932	Apr. 15, 2022	Apr. 14, 2023
<input checked="" type="checkbox"/>	DC Source	KIKUSUI	PWR400L	LK003024	N/A	N/A
<input checked="" type="checkbox"/>	Digital multimeter	FLUKE	15B+	30701460WS15	Nov. 02, 2022	Nov. 01, 2023
<input checked="" type="checkbox"/>	Temp & Humidity chamber	Votisch	VT4002	58566133290020	Apr. 15, 2022	Apr. 14, 2023

Shenzhen UnionTrust Quality and Technology Co., Ltd.

Address: Unit D/E of 9/F and 16/F, Block A, Building 6, Baoneng science and technology park, Longhua district, Shenzhen, China

Tel: +86-755-28230888

Fax: +86-755-28230886

E-mail: info@uttlab.com

<http://www.uttlab.com>

UTTR-RF-FCC23G-V1.1

4. TEST CONFIGURATION

4.1 ENVIRONMENTAL CONDITIONS FOR TESTING

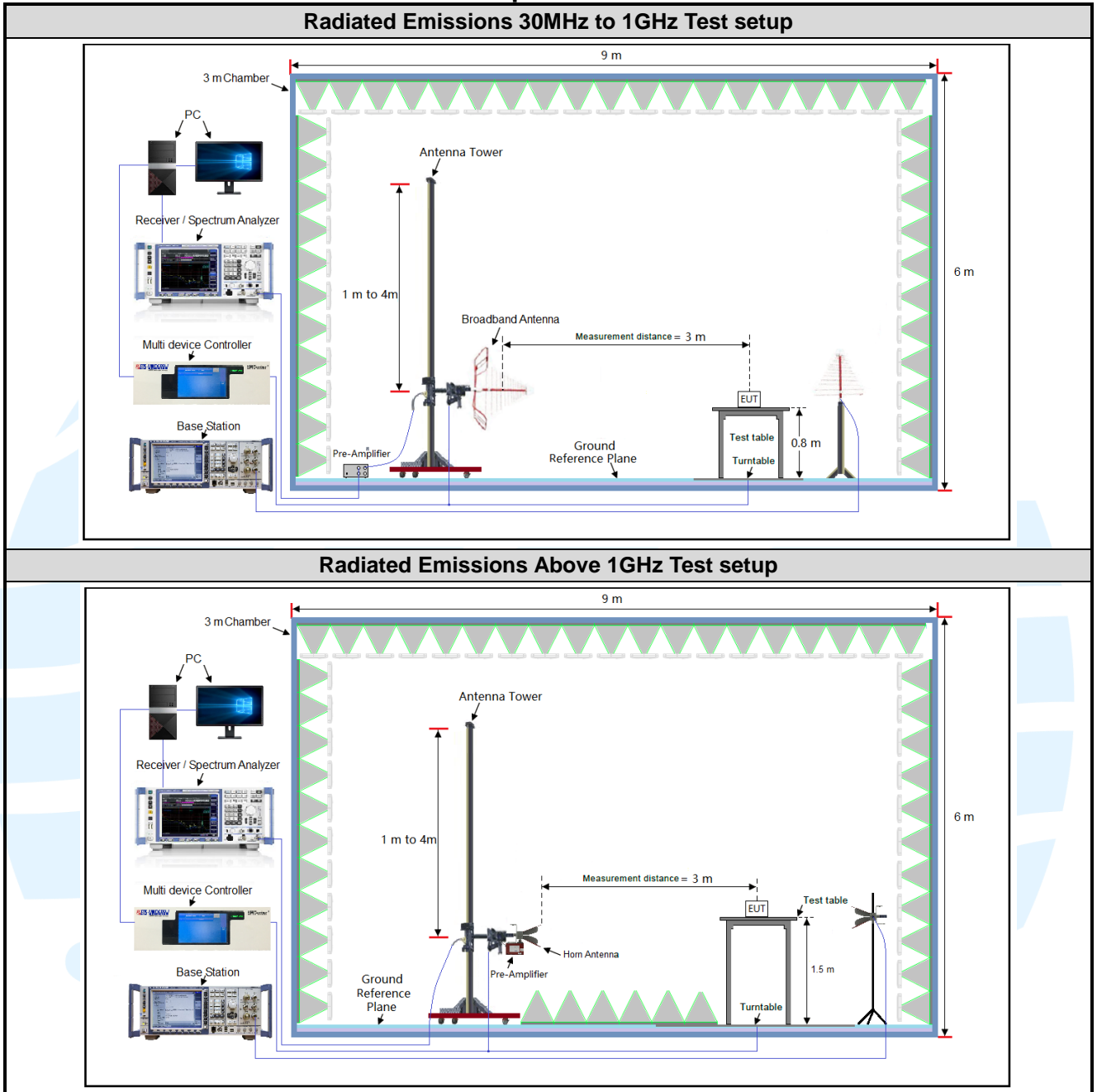
Test Environment	Selected Values During Tests		
Test Condition	Ambient		
	Temperature (°C)	Voltage (V)	Relative Humidity (%)
TN/VN	+15 to +35	3.7	20 to 75
TL/VL	-30	3.4	20 to 75
TH/VL	+50	3.4	20 to 75
TL/VH	-30	4.2	20 to 75
TH/VH	+50	4.2	20 to 75

Remark:

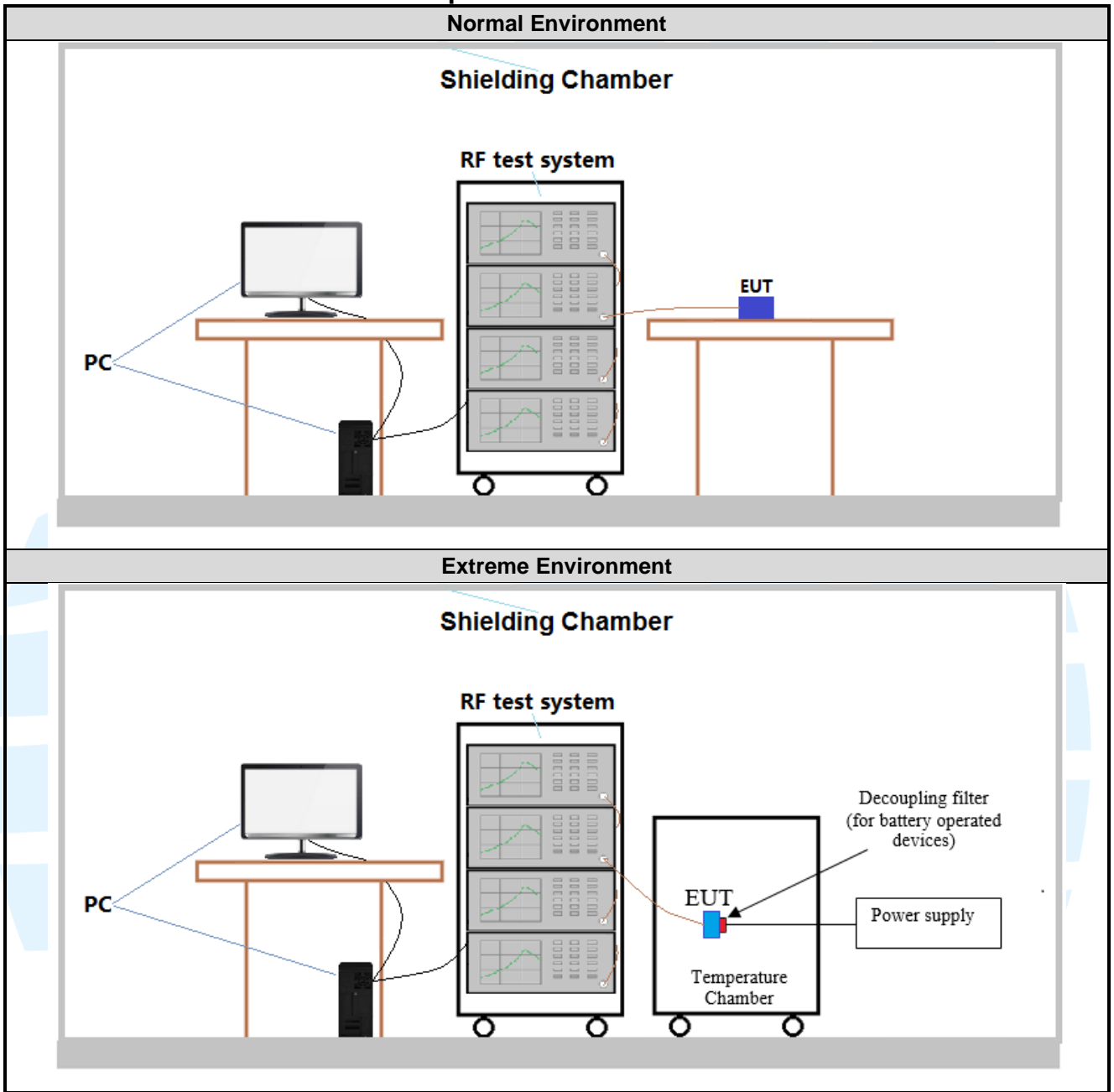
- 1) The EUT just work in such extreme temperature of -30 °C to +50 °C and the extreme voltage of 3.4 V to 4.2 V, so here the EUT is tested in the temperature of -30 °C to +50 °C and the voltage of 3.4 V to 4.2 V.
- 2) VN: Normal Voltage; TN: Normal Temperature;
 TL: Low Extreme Test Temperature; TH: High Extreme Test Temperature;
 VL: Low Extreme Test Voltage; VH: High Extreme Test Voltage.

4.2 TEST SETUP

4.2.1 For Radiated Emissions test setup



4.2.2 For Conducted RF test setup



4.3 TEST CHANNELS

Bands	Tx/Rx Frequency	RF Channel		
		Low(L)	Middle(M)	High(H)
GSM 850	Tx (824 MHz ~ 849 MHz)	Channel 128	Channel 190	Channel 251
		824.2 MHz	836.6 MHz	848.8 MHz

Bands	Tx/Rx Frequency	RF Channel		
		Low(L)	Middle(M)	High(H)
GSM 1900	Tx (1850 MHz-1910 MHz)	Channel 512	Channel 661	Channel 810
		1850.2 MHz	1880.0 MHz	1909.8 MHz

4.4 SYSTEM TEST CONFIGURATION

For emissions testing, the equipment under test (EUT) setup to transmit continuously to simplify the measurement methodology. Care was taken to ensure proper power supply voltages during testing. During testing, radiated emission were performed with the EUT set to transmit at the channel with highest output power as worst-case scenario. It was powered by a 3.7Vdc battery. Only the worst case data were recorded in this test report.

Pre-Scan has been conducted to determine the worst-case mode from all possible combinations between available modulations, data rates, X/Y/Z axis, and antenna ports. The worst case was found when positioned as the table below.

Bands	Mode	Antenna Port	Worst-case axis positioning
GSM 850	1TX	Chain 0	Y axis
PCS 1900	1TX	Chain 0	Y axis

All readings are extrapolated back to the equivalent three meter reading using inverse scaling with distance. Analyzer resolution is 100 kHz or greater for frequencies below 1000MHz. The resolution is 1 MHz or greater for frequencies above 1000MHz. The spurious emissions more than 20 dB below the permissible value are not reported.

Radiated emission measurement were performed from the lowest radio frequency signal generated in the device which is greater than 9 kHz to the tenth harmonic of the highest fundamental frequency or to 40 GHz, whichever is lower.

4.5 PRE-SCAN

Pre-scan under all rate at lowest middle and highest channel, find the transmitter power as below:
SIM 1 Card Conducted transmitter power measurement result.

GSM 850 Maximum Average Power (dBm)			
Channel	128	190	251
Frequency(MHz)	824.2 MHz	836.6 MHz	848.8 MHz
GSM (GMSK, 1Tx-slot)	32.27	32.42	32.52

PCS 1900 Maximum Average Power (dBm)			
Channel	512	661	810
Frequency(MHz)	1850.2 MHz	1880.0 MHz	1909.8 MHz
GSM (GMSK, 1Tx-slot)	29.48	29.69	29.70

The worse mode applicability and tested channel detail as below:

Band	Radiated	Conducted
GSM 850/1900	1) GSM (GMSK, 1Tx-slot) Link	1) GSM (GMSK,1Tx-slot) Link

5. RADIO TECHNICAL REQUIREMENTS SPECIFICATION
5.1 REFERENCE DOCUMENTS FOR TESTING

No.	Identity	Document Title
1	FCC 47 CFR Part 2	Frequency allocations and radio treaty matters; general rules and regulations
2	FCC 47 CFR Part 22	Public Mobile Services
3	FCC 47 CFR Part 27	Miscellaneous Wireless Communications Services
4	FCC 47 CFR Part 24	Personal Communications Services
5	ANSI C63.26-2015	American National Standard for Compliance Testing of Transmitters Used in Licensed Radio Services
6	KDB 971168 D01	KDB 971168 D01 Power Meas License Digital Systems v03r01

5.2 MAXIMUM ERP/EIRP

Test Requirement: FCC 47 CFR Part 2.1046(a),
 FCC 47 CFR Part 22.913(a),
 FCC 47 CFR Part 24.232(c),

Test Method: KDB 971168 D01v03r01 Section 5.6 & ANSI C63.26-2015

Limit:

FCC 47 CFR Part 22.913(a)

The ERP of mobile transmitters and auxiliary test transmitters must not exceed 7 Watts.

FCC 47 CFR Part 24.232(c)

Mobile and portable stations are limited to 2 watts EIRP.

Test Procedure:

$$ERP \text{ or } EIRP = P_{Meas} + G_T - L_C$$

where:

ERP or EIRP = effective radiated power or equivalent isotropically radiated power, respectively (expressed in the same units as P_{Meas}, typically dBW or dBm);

P_{Meas} = measured transmitter output power or PSD, in dBm or dBW;

G_T = gain of the transmitting antenna, in dBd (ERP) or dBi (EIRP);

L_C = signal attenuation in the connecting cable between the transmitter and antenna, in dB.

Test Setup: Refer to section 4.2.1 for details.

Instruments Used: Refer to section 3 for details

Test Mode: Link mode

Test Results: Pass

Test Data: See table below

Bands	Modulation	Max. Conducted Avg. Power	Ant. Gain (dBi)	Limit (W)	ERP		Result
		(dBm)			(dBm)	(W)	
GSM 850 (824-849 MHz)	GMSK	32.52	0.44	7.0	30.81	1.2050	Pass

Bands	Modulation	Max. Conducted Avg. Power	Ant. Gain (dBi)	Limit (W)	EIRP		Result
		(dBm)			(dBm)	(W)	
PCS 1900 (1850-1910 MHz)	GMSK	29.70	0.86	2.0	30.56	1.1376	Pass

Note: The maximum ERP/EIRP is calculated from max output power and antenna gain, the antenna gain provided by the customer, and the customer takes all the responsibilities for the accuracy of antenna gain.

5.3 CONDUCTED OUTPUT POWER

Test Requirement: FCC 47 CFR Part 2.1046(a),
FCC 47 CFR Part 22.913(a),
FCC 47 CFR Part 24.232(c),

Test Method: KDB 971168 D01v03r01 & ANSI C63.26-2015

Limit:

FCC 47 CFR Part 22.913(a)

The ERP of mobile transmitters and auxiliary test transmitters must not exceed 7 Watts.

FCC 47 CFR Part 24.232(c)

Mobile and portable stations are limited to 2 watts EIRP.

Test Procedure:

The EUT was set up for the maximum power with GSM, E, EDGE, WCDMA, CDMA2000, and LTE link data modulation and link up with simulator. Set the EUT to transmit under low, middle and high channel and record the power level shown on simulator.

Note: The cable loss and attenuator loss were offset into measure device as an amplitude offset.

Test Setup: Refer to section 4.2.2 for details.

Instruments Used: Refer to section 3 for details

Test Mode: Link mode

Test Results: Pass

Test Data: The full result refer to section 4.5 for details.

5.4 PEAK-TO-AVERAGE RATIO

Test Requirement: FCC 47 CFR Part 22.913(a),
FCC 47 CFR Part 24.232(c),
Test Method: KDB 971168 D01v03r01 Section 5.7
Limit: In measuring transmissions in this band using an average power technique, the peak-to-average ratio (PAR) of the transmission may not exceed 13 dB

Test Procedure:
The EUT was connected to Spectrum Analyzer and Base Station via power divider. The RF output of EUT was connected to the spectrum analyzer by RF cable and attenuator. The path loss was compensated to the results for each measurement.

Some regulatory requirements specify a PAPR limit when the output power limits are specified in terms of average power. If it becomes necessary to provide measurement data to demonstrate compliance to a PAPR limit, then the appropriate procedure from those provided in 5.2.3 shall be utilized to determine the peak power (or peak PSD) and the appropriate procedure from those provided in 5.2.4 shall be used to determine the average power (or average PSD). The data from these measurements is then used in Equation (2) to determine the PAPR of a narrowband CW-like signal. See 5.2.3.4 for guidance on determining the PAPR of a broadband noise-like signal.

$$PAPR (dB) = PPK (dBm \text{ or } dBW) - PAvg (dBm \text{ or } dBW)$$

where:

PAPR peak-to-average power ratio, in dB;

PPk measured peak power or peak PSD level, in dBm or dBW;

PAvg measured average power or average PSD level, in dBm or dBW.

OR

The transmitter output was connected to a calibrated coaxial cable and coupler, the other end of which was connected to a spectrum analyzer.

- a) Set resolution/measurement bandwidth \geq signal's occupied bandwidth
- b) Set the number of counts to a value that stabilizes the measured CCDF curve
- c) Record the maximum PAPR level associated with a probability of 0.1 %

Note: The cable loss and attenuator loss were offset into measure device as an amplitude offset.

Test Setup: Refer to section 4.2.2 for details.

Instruments Used: Refer to section 3 for details

Test Mode: Link mode

Test Results: Pass

Test Data: See table below

Bands	Modulation	Peak-to-average ratio (dB)			Limit (dB)	Result
		Lowest	Middle	Highest		
GSM 850	GSM	1.27	0.26	0.27	13	Pass
PCS 1900	GSM	0.30	0.28	0.27	13	Pass

The test plots as follows:



Shenzhen UnionTrust Quality and Technology Co., Ltd.

Address: Unit D/E of 9/F and 16/F, Block A, Building 6, Baoneng science and technology park, Longhua district, Shenzhen, China

Tel: +86-755-28230888

Fax: +86-755-28230886

E-mail: info@uttlab.com

<http://www.uttlab.com>

UTTR-RF-FCC23G-V1.1

5.5 99%&26DB BANDWIDTH

Test Requirement: FCC 47 CFR Part 2.1049(h),
 FCC 47 CFR Part 22.917(b),
 FCC 47 CFR Part 24.238(b),
 FCC 47 CFR Part 27.53(h)

Test Method: ANSI C63.26-2015 & KDB 971168 D01v03r01 Section 4

Limit: No Limit, for reporting purposes only.

Test Procedure:
 The transmitter output was connected to a calibrated coaxial cable and coupler, the other end of which was connected to a spectrum analyzer. The occupied bandwidth was measured with the spectrum analyzer at the low, middle and high channel in each band. The 99% and -26dB bandwidths was also measured and recorded.

Note: The cable loss and attenuator loss were offset into measure device as an amplitude offset.

Test Setup: Refer to section 4.2.2 for details.

Instruments Used: Refer to section 3 for details

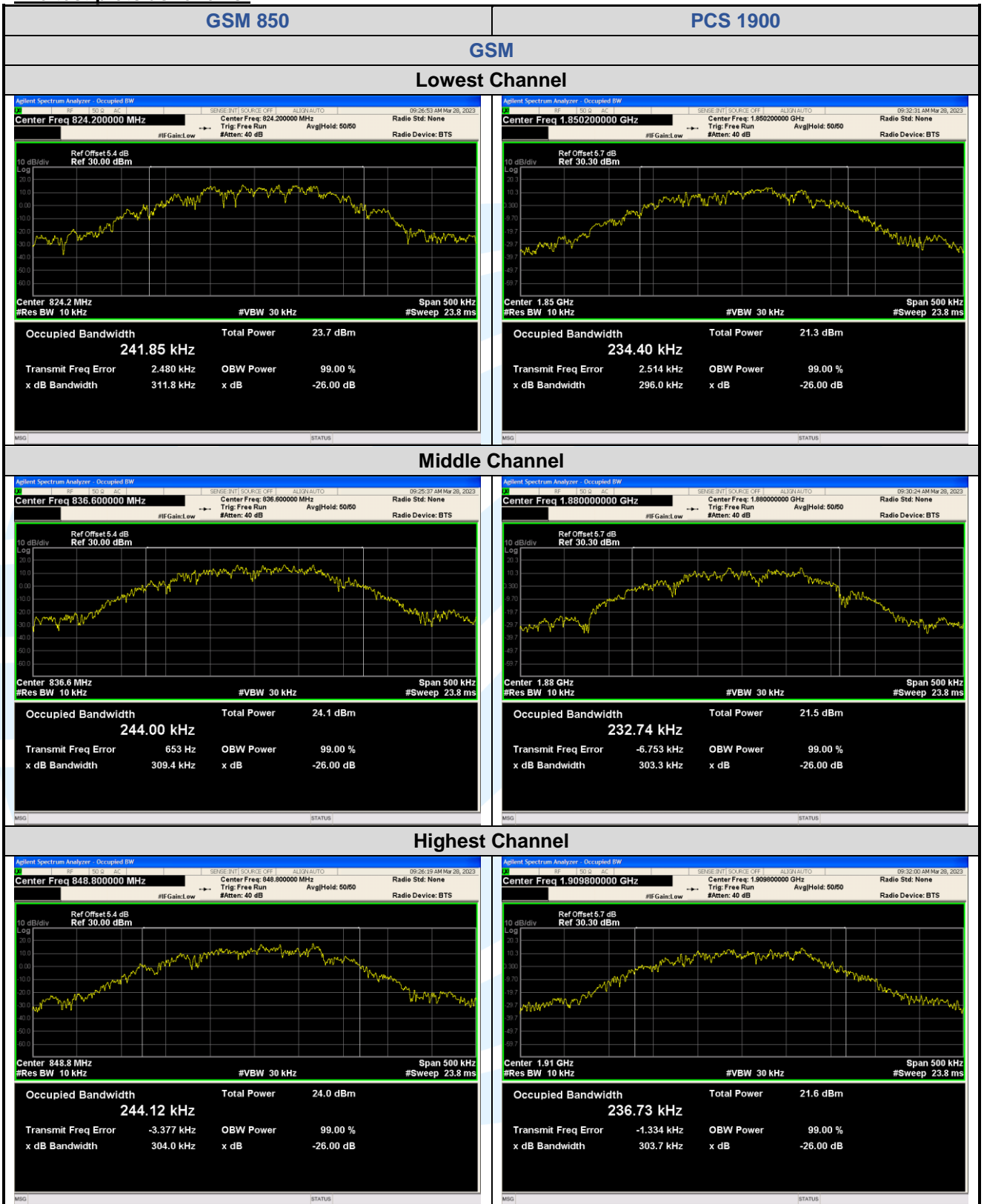
Test Mode: Link mode

Test Results: Pass

Test Data: See table below

Bands	Modulation	Channel	Frequency (MHz)	26 dB BW (kHz)	99% BW (kHz)
GSM 850	GSM	128	824.2	311.8	241.85
		190	836.6	309.4	244.00
		251	848.8	304.0	244.12
PCS 1900	GSM	512	1850.2	296.0	234.40
		661	1880.0	303.3	232.74
		810	1909.8	303.7	236.73

The test plots as follows:



Shenzhen UnionTrust Quality and Technology Co., Ltd.

Address: Unit D/E of 9/F and 16/F, Block A, Building 6, Baoneng science and technology park, Longhua district, Shenzhen, China

Tel: +86-755-28230888

Fax: +86-755-28230886

E-mail: info@uttlab.com

<http://www.uttlab.com>

UTTR-RF-FCC23G-V1.1

5.6 BAND EDGE AT ANTENNA TERMINALS

Test Requirement: FCC 47 CFR Part 2.1051,
FCC 47 CFR Part 22.917(a),
FCC 47 CFR Part 24.238(a),
FCC 47 CFR Part 27.53(h)(1)

Test Method: ANSI C63.26-2015 & KDB 971168 D01v03r01

Limit:

The power of any emission outside of the authorized operating frequency ranges must be attenuated below the transmitting power (P) by a factor of at least $43 + 10 \log(P)$ dB. The emission limit equal to -13 dBm.

Test Procedure:

The transmitter output was connected to a calibrated coaxial cable and coupler, the other end of which was connected to a spectrum analyzer.

For each band edge measurement:

- 1) Set the spectrum analyzer span to include the block edge frequency.
- 2) Set a marker to point the corresponding band edge frequency in each test case.
- 3) Set display line at -13 dBm
- 4) Set resolution bandwidth to at least 1% of emission bandwidth.
- 5) Set spectrum analyzer with RMS detector.
- 6) Record the max trace plot into the test report

Note: The cable loss and attenuator loss were offset into measure device as an amplitude offset.

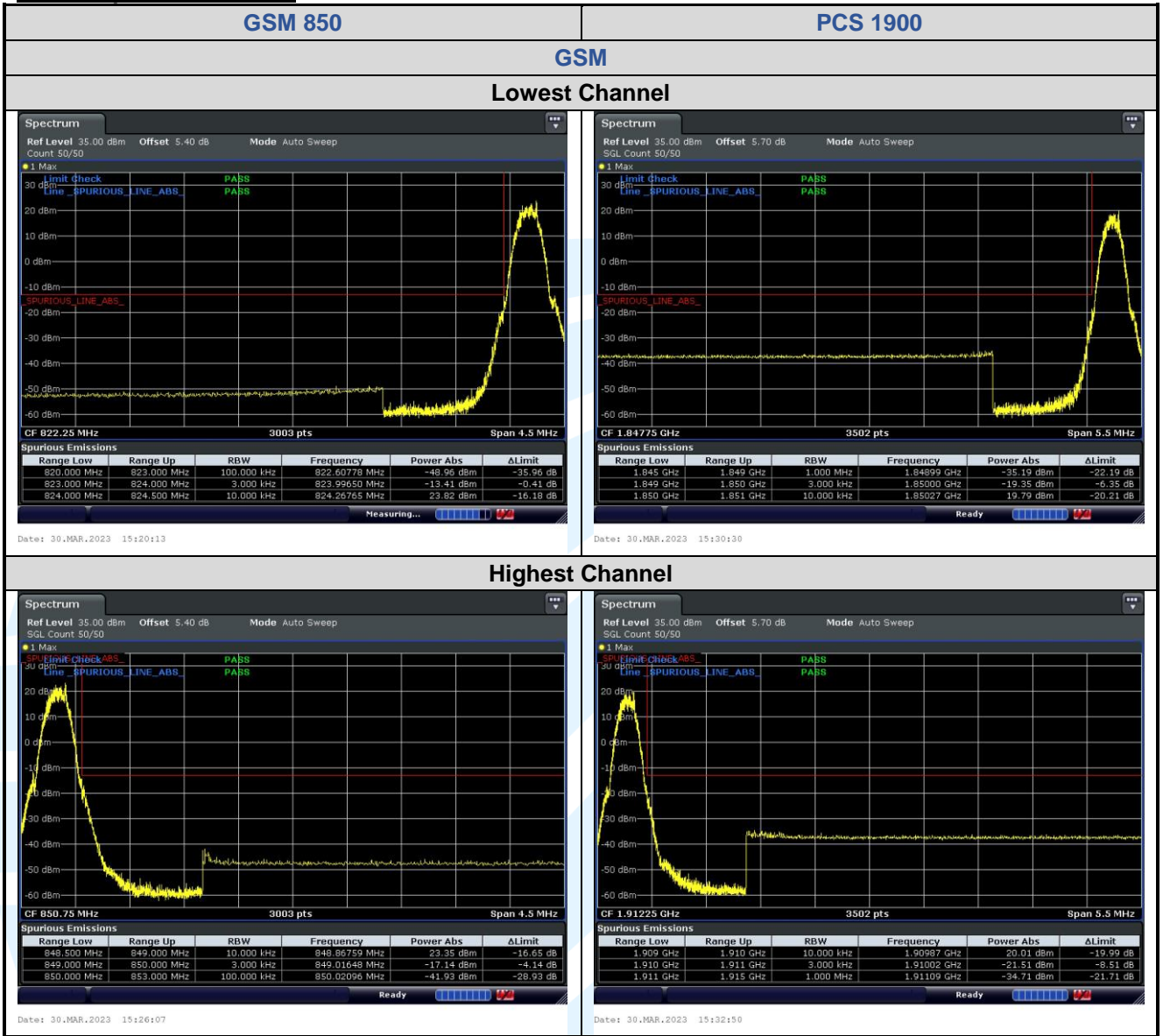
Test Setup: Refer to section 4.2.2 for details.

Instruments Used: Refer to section 3 for details

Test Mode: Link mode

Test Results: Pass

The test plots as follows:



5.7 SPURIOUS EMISSIONS AT ANTENNA TERMINALS

Test Requirement: FCC 47 CFR Part 2.1051,
FCC 47 CFR Part 22.917(a)(b),
FCC 47 CFR Part 24.238(a)(b),
FCC 47 CFR Part 27.53(h)(1)

Test Method: ANSI C63.26-2015 & KDB 971168 D01v03r01

Limit:

The power of any emission outside of the authorized operating frequency ranges must be attenuated below the transmitting power (P) by a factor of at least $43 + 10 \log(P)$ dB. The emission limit equal to -13 dBm.

Test Procedure:

The EUT makes a phone call to the communication simulator. All measurements were done at low, middle and high operational frequency range. b. Measuring frequency range is from 30 MHz to the tenth harmonic of the highest fundamental frequency or to 40 GHz, whichever is lower. Set RBW & VBW to 100 kHz for the measurement below 1 GHz, and 1 MHz for the measurement above 1 GHz.

Note: The cable loss and attenuator loss were offset into measure device as an amplitude offset.

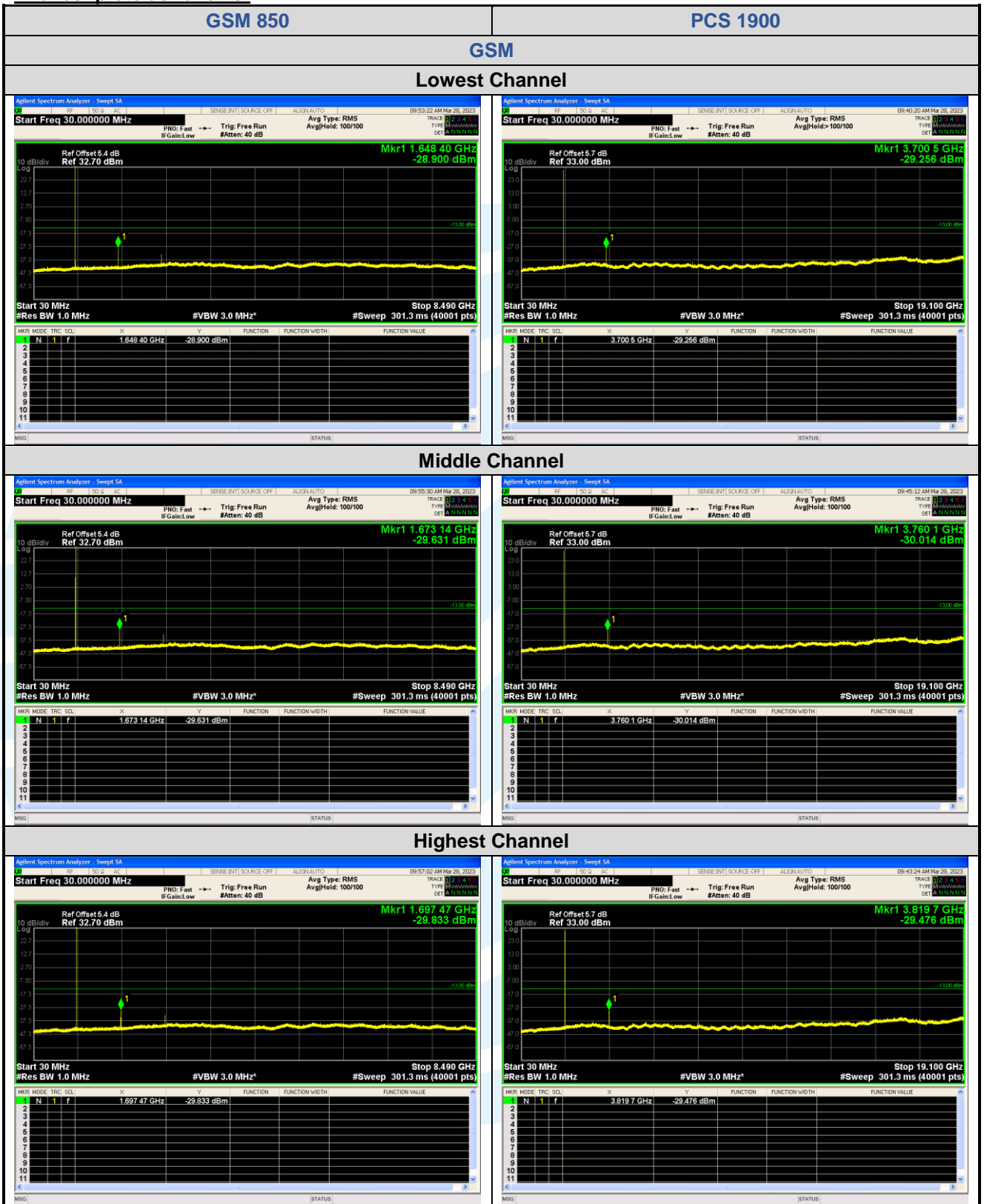
Test Setup: Refer to section 4.2.2 for details.

Instruments Used: Refer to section 3 for details

Test Mode: Link mode

Test Results: Pass

The test plots as follows:



Remark:

1) All the above data, the fundamental frequency is not marked, it may exceed the limit, please ignore it.

5.8 FIELD STRENGTH OF SPURIOUS RADIATION

Test Requirement: FCC 47 CFR Part 2.1053,
FCC 47 CFR Part 22.917(a)(b),
FCC 47 CFR Part 24.238(a)(b),
FCC 47 CFR Part 27.53(h)(1)

Test Method: ANSI C63.26-2015 & KDB 971168 D01v03r01 Section 7

Limits:

The power of any emission outside of the authorized operating frequency ranges must be attenuated below the transmitting power (P) by a factor of at least $43 + 10 \log(P)$ dB. The emission limit equal to -13 dBm.

Test Setup: Refer to section 4.2.1 for details.

Test Procedures: KDB 971168 D01v03r01 Section 7

Equipment Used: Refer to section 3 for details.

Test Result: Pass

The measurement data as follows:

GSM 850							
No.	Frequency	SA Reading	Correction factor	EIRP Result	Limit	Margin	Ant. Pol.
	(MHz)	(dBm)	(dB/m)	(dBm)	(dBm)	(dB)	
Lowest Channel							
1	646.822	-88.95	39.75	-49.20	-13.00	-36.20	Horizontal
2	679.435	-88.42	40.12	-48.30	-13.00	-35.30	Horizontal
3	952.000	-88.08	42.93	-45.15	-13.00	-32.15	Horizontal
4	1648.400	-66.22	0.10	-66.12	-13.00	-53.12	Horizontal
5	2472.600	-63.79	3.78	-60.01	-13.00	-47.01	Horizontal
1	765.648	-87.91	41.20	-46.71	-13.00	-33.71	Vertical
2	925.613	-87.29	43.20	-44.09	-13.00	-31.09	Vertical
3	992.997	-86.72	43.17	-43.55	-13.00	-30.55	Vertical
4	1648.400	-63.72	0.10	-63.62	-13.00	-50.62	Vertical
5	2472.600	-62.38	3.78	-58.60	-13.00	-45.60	Vertical
Middle Channel							
1	693.910	-89.11	40.68	-48.43	-13.00	-35.43	Horizontal
2	798.620	-87.92	41.76	-46.16	-13.00	-33.16	Horizontal
3	925.613	-88.24	43.20	-45.04	-13.00	-32.04	Horizontal
4	1673.200	-64.65	0.26	-64.39	-13.00	-51.39	Horizontal
5	2509.800	-67.17	3.90	-63.27	-13.00	-50.27	Horizontal
1	598.707	-88.58	38.60	-49.98	-13.00	-36.98	Vertical
2	793.028	-88.59	41.79	-46.80	-13.00	-33.80	Vertical
3	912.695	-86.71	42.91	-43.80	-13.00	-30.80	Vertical
4	1673.200	-63.98	0.26	-63.72	-13.00	-50.72	Vertical
5	2509.800	-62.54	3.90	-58.64	-13.00	-45.64	Vertical
Highest Channel							
1	734.037	-88.76	40.41	-48.35	-13.00	-35.35	Horizontal
2	760.287	-88.25	41.09	-47.16	-13.00	-34.16	Horizontal
3	798.620	-87.76	41.76	-46.00	-13.00	-33.00	Horizontal
4	1697.600	-65.65	0.42	-65.23	-13.00	-52.23	Horizontal
5	2546.400	-64.40	3.97	-60.43	-13.00	-47.43	Horizontal
1	798.620	-88.76	41.76	-47.00	-13.00	-34.00	Vertical
2	912.695	-87.75	42.91	-44.84	-13.00	-31.84	Vertical
3	979.139	-87.76	43.21	-44.55	-13.00	-31.55	Vertical
4	1697.600	-63.90	0.42	-63.48	-13.00	-50.48	Vertical
5	2546.400	-63.03	3.97	-59.06	-13.00	-46.06	Vertical

PCS 1900							
No.	Frequency	SA Reading	Correction factor	EIRP Result	Limit	Margin	Ant. Pol.
	(MHz)	(dBm)	(dB/m)	(dBm)	(dBm)	(dB)	
Lowest Channel							
1	698.804	-81.29	12.02	-69.27	-13.00	-56.27	Horizontal
2	787.475	-81.96	12.94	-69.02	-13.00	-56.02	Horizontal
3	912.695	-81.98	14.39	-67.59	-13.00	-54.59	Horizontal
4	3700.400	-53.20	7.72	-45.48	-13.00	-32.48	Horizontal
5	5550.600	-63.60	11.44	-52.16	-13.00	-39.16	Horizontal
1	655.977	-80.53	11.11	-69.42	-13.00	-56.42	Vertical
2	793.028	-81.27	13.00	-68.27	-13.00	-55.27	Vertical
3	906.304	-82.32	14.40	-67.92	-13.00	-54.92	Vertical
4	3700.400	-50.32	7.72	-42.60	-13.00	-29.60	Vertical
5	5550.600	-60.40	11.44	-48.96	-13.00	-35.96	Vertical
Middle Channel							
1	703.731	-80.73	11.90	-68.83	-13.00	-55.83	Horizontal
2	932.141	-82.90	14.85	-68.05	-13.00	-55.05	Horizontal
3	992.997	-82.19	14.84	-67.35	-13.00	-54.35	Horizontal
4	3760.000	-56.71	7.88	-48.83	-13.00	-35.83	Horizontal
5	5640.000	-63.82	11.36	-52.46	-13.00	-39.46	Horizontal
1	760.287	-81.43	12.29	-69.14	-13.00	-56.14	Vertical
2	868.886	-81.65	13.69	-67.96	-13.00	-54.96	Vertical
3	925.613	-81.67	14.71	-66.96	-13.00	-53.96	Vertical
4	3760.000	-53.15	7.88	-45.27	-13.00	-32.27	Vertical
5	5640.000	-63.80	11.36	-52.44	-13.00	-39.44	Vertical
Highest Channel							
1	698.804	-81.12	12.02	-69.10	-13.00	-56.10	Horizontal
2	809.924	-80.36	12.71	-67.65	-13.00	-54.65	Horizontal
3	932.141	-82.05	14.85	-67.20	-13.00	-54.20	Horizontal
4	3819.600	-50.11	8.05	-42.06	-13.00	-29.06	Horizontal
5	5729.400	-67.92	11.29	-56.63	-13.00	-43.63	Horizontal
1	781.961	-81.37	12.77	-68.60	-13.00	-55.60	Vertical
2	932.141	-82.76	14.85	-67.91	-13.00	-54.91	Vertical
3	972.283	-81.62	14.58	-67.04	-13.00	-54.04	Vertical
4	3819.600	-44.70	8.05	-36.65	-13.00	-23.65	Vertical
5	5729.400	-67.61	11.29	-56.32	-13.00	-43.32	Vertical

Remark:

1. Correct Factor = Antenna Factor + Cable Loss - Amplifier Gain, the value was added to Original Receiver Reading by the software automatically.
2. Result = Reading + Correct Factor.
3. Margin = Result – Limit

Shenzhen UnionTrust Quality and Technology Co., Ltd.

Address: Unit D/E of 9/F and 16/F, Block A, Building 6, Baoneng science and technology park, Longhua district, Shenzhen, China

Tel: +86-755-28230888

Fax: +86-755-28230886

E-mail: info@uttlab.com

<http://www.uttlab.com>

UTTR-RF-FCC23G-V1.1

5.9 FREQUENCY STABILITY

Test Requirement: FCC 47 CFR Part 2.1055 &
 FCC 47 CFR Part 22.355 &
 FCC 47 CFR Part 24.235 &
 FCC 47 CFR Part 27.54

Test Method: ANSI C63.26-2015 & KDB 971168 D01v03r01

Limits:

FCC 47 CFR Part 22.355,

The carrier frequency shall not depart from the reference frequency in excess of ± 2.5 ppm for mobile stations.

FCC 47 CFR Part 24.235, FCC 47 CFR Part 27.54

The frequency stability shall be sufficient to ensure that the fundamental emission stays within the authorized frequency block.

Test Setup: Refer to section 4.2.2 for details.

Test Procedures:

- 1) Use CMW 500 with Frequency Error measurement capability.
 - a) Temp. = -30° to $+50^{\circ}\text{C}$
 - b) Voltage = low voltage, 3.4 Vdc, Normal, 3.7 Vdc and High voltage, 4.2 Vdc.
- 2) Frequency Stability vs Temperature:

The EUT is placed inside a temperature chamber. The temperature is set to 20°C and allowed to stabilize. After sufficient soak time, the transmitting frequency error is measured. The temperature is increased by 10 degrees, allowed to stabilize and soak, and then the measurement is repeated. This is repeated until $+50^{\circ}\text{C}$ is reached.

- 3) Frequency Stability vs Voltage:

The peak frequency error is recorded (worst-case).

Equipment Used: Refer to section 3 for details.

Test Result: Pass

Modulation	Channel/ Frequency (MHz)	Voltage (Vdc)	Temperature ($^{\circ}\text{C}$)	Deviation (Hz)	Deviation (ppm)	Limit (ppm)	Result
GSM 850							
GMSK	190 / 836.6	VL	TN	14	0.0167	± 2.5	Pass
		VN		32	0.0383	± 2.5	Pass
		VH		27	0.0323	± 2.5	Pass
		VN	50	22	0.0263	± 2.5	Pass
			40	31	0.0371	± 2.5	Pass
			30	32	0.0383	± 2.5	Pass
			20	35	0.0418	± 2.5	Pass
			10	37	0.0442	± 2.5	Pass
			0	32	0.0383	± 2.5	Pass
			-10	27	0.0323	± 2.5	Pass
			-20	31	0.0371	± 2.5	Pass
			-30	19	0.0227	± 2.5	Pass

Modulation	Channel/ Frequency	Voltage	Temperature	Deviation	Deviation	Limit	Result
	(MHz)	(Vdc)	(°C)	(Hz)	(ppm)	(ppm)	
PCS 1900							
GMSK	661 / 1880.0	VL	TN	33	0.0176	N/A	Pass
		VN		27	0.0144		Pass
		VH		31	0.0165		Pass
		VN	50	24	0.0128		Pass
			40	32	0.0170		Pass
			30	19	0.0101		Pass
			20	22	0.0117		Pass
			10	27	0.0144		Pass
			0	19	0.0101		Pass
			-10	25	0.0133		Pass
			-20	26	0.0138		Pass
			-30	23	0.0122		Pass

Shenzhen UnionTrust Quality and Technology Co., Ltd.

Address: Unit D/E of 9/F and 16/F, Block A, Building 6, Baoneng science and technology park, Longhua district, Shenzhen, China

Tel: +86-755-28230888

Fax: +86-755-28230886

E-mail: info@uttlab.com

<http://www.uttlab.com>

UTTR-RF-FCC23G-V1.1

APPENDIX 1 PHOTOS OF TEST SETUP

See test photos attached in Appendix 1 for the actual connections between Product and support equipment.

APPENDIX 2 PHOTOS OF EUT CONSTRUCTIONAL DETAILS

Refer to Appendix 2 for EUT external and internal photos.

*** End of Report ***

The test report is effective only with both signature and specialized stamp. The result(s) shown in this report refer only to the sample(s) tested. Without written approval of UnionTrust, this report can't be reproduced except in full.
