



REPORT No.: SZ21080257S01

Annex D Plots of Maximum SAR Test Results

GSM850_GPRS(2 TX slots)_Left Cheek_Ch189

Communication System: UID 0, GSM850(class 10) (0); Frequency: 836.4 MHz;Duty Cycle: 1:4.15
Medium: HSL_900 Medium parameters used: $f = 836.4$ MHz; $\sigma = 0.943$ S/m; $\epsilon_r = 42.978$; $\rho = 1000$ kg/m³

Ambient Temperature : 23.2 °C; Liquid Temperature : 22.1 °C

DASY5 Configuration:

- Probe: EX3DV4 - SN7608; ConvF(9.81, 9.81, 9.81) @ 836.4 MHz; Calibrated: 2022.01.12
- Sensor-Surface: 2mm (Mechanical Surface Detection)
- Electronics: DAE4 Sn1643; Calibrated: 2021.12.30
- Phantom: Twin-SAM; Type: QD 000 P41 Ax; Serial: 2020
- Measurement SW: DASY52, Version 52.10 (4); SEMCAD X Version 14.6.14 (7483)

Ch189/Area Scan (71x91x1): Interpolated grid: dx=1.500 mm, dy=1.500 mm

Maximum value of SAR (interpolated) = 0.394 W/kg

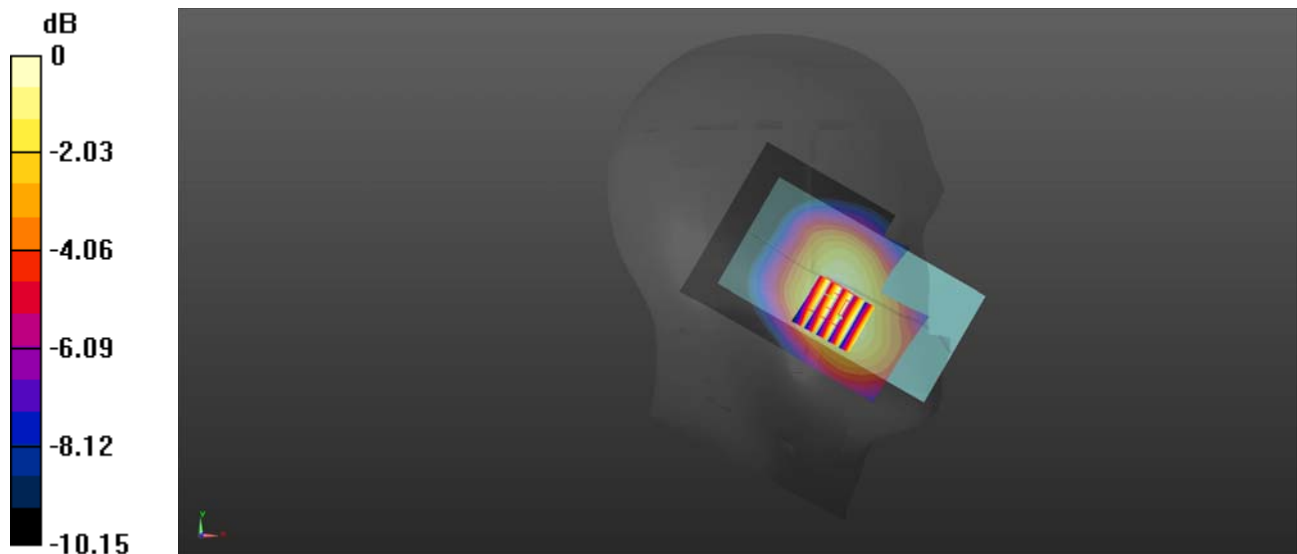
Ch189/Zoom Scan (5x5x7)/Cube 0: Measurement grid: dx=8mm, dy=8mm, dz=5mm

Reference Value = 3.968 V/m; Power Drift = 0.03 dB

Peak SAR (extrapolated) = 0.438 W/kg

SAR(1 g) = 0.338 W/kg; SAR(10 g) = 0.252 W/kg

Maximum value of SAR (measured) = 0.388 W/kg



0 dB = 0.388 W/kg

GSM1900_GPRS(1 TX slots)_Left Cheek_Ch661

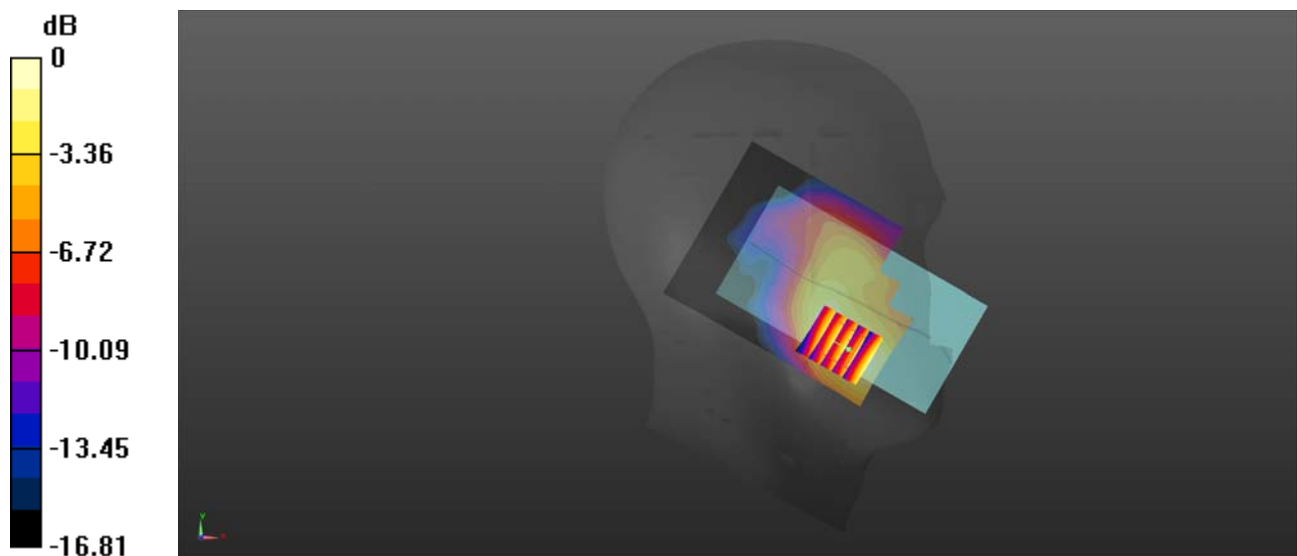
Communication System: UID 0, GSM1900(class 8) (0); Frequency: 1880 MHz; Duty Cycle: 1:8.3
Medium: HSL_2000 Medium parameters used: $f = 1880$ MHz; $\sigma = 1.321$ S/m; $\epsilon_r = 39.882$; $\rho = 1000$ kg/m³
Ambient Temperature : 23.2 °C; Liquid Temperature : 22.1 °C

DASY5 Configuration:

- Probe: EX3DV4 - SN7608; ConvF(7.99, 7.99, 7.99) @ 1880 MHz; Calibrated: 2022.01.12
- Sensor-Surface: 2mm (Mechanical Surface Detection)
- Electronics: DAE4 Sn1643; Calibrated: 2021.12.30
- Phantom: Twin-SAM; Type: QD 000 P41 Ax; Serial: 2020
- Measurement SW: DASY52, Version 52.10 (4); SEMCAD X Version 14.6.14 (7483)

Ch661/Area Scan (71x91x1): Interpolated grid: dx=1.500 mm, dy=1.500 mm
Maximum value of SAR (interpolated) = 0.272 W/kg

Ch661/Zoom Scan (5x5x7)/Cube 0: Measurement grid: dx=8mm, dy=8mm, dz=5mm
Reference Value = 2.987 V/m; Power Drift = 0.09 dB
Peak SAR (extrapolated) = 0.323 W/kg
SAR(1 g) = 0.214 W/kg; SAR(10 g) = 0.136 W/kg
Maximum value of SAR (measured) = 0.271 W/kg



0 dB = 0.271 W/kg

WCDMA Band II_RMC 12.2Kbps_Left Cheek_Ch9400

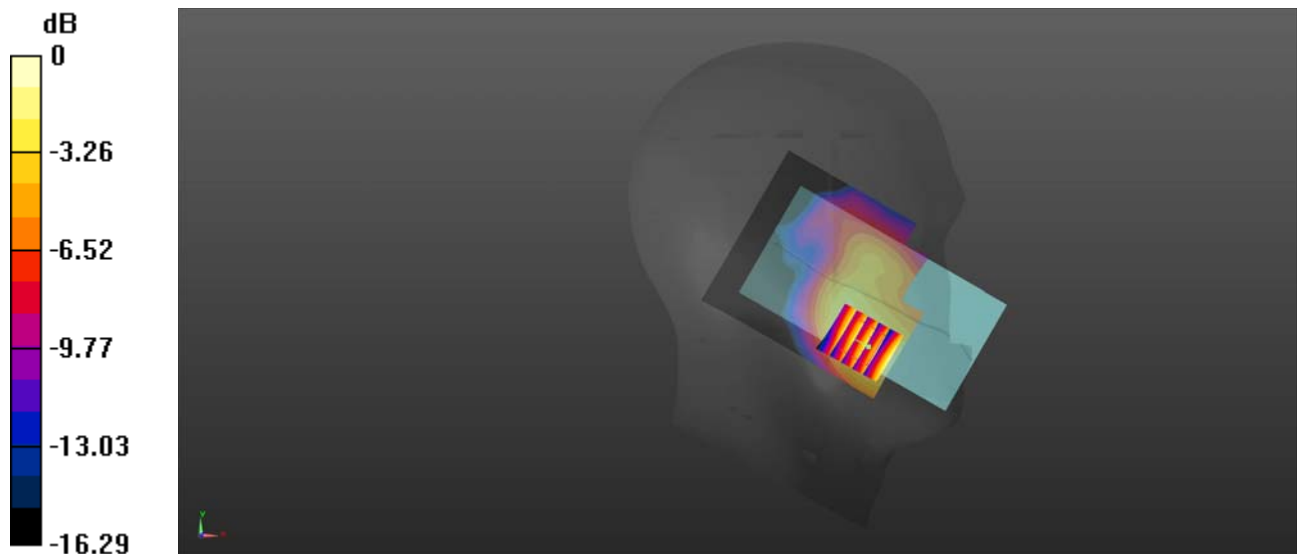
Communication System: UID 0, UMTS-FDD (0); Frequency: 1880 MHz; Duty Cycle: 1:1
Medium: HSL_2000 Medium parameters used: $f = 1880$ MHz; $\sigma = 1.321$ S/m; $\epsilon_r = 39.882$; $\rho = 1000$ kg/m³
Ambient Temperature : 23.2 °C; Liquid Temperature : 22.1 °C

DASY5 Configuration:

- Probe: EX3DV4 - SN7608; ConvF(7.99, 7.99, 7.99) @ 1880 MHz; Calibrated: 2022.01.12
- Sensor-Surface: 2mm (Mechanical Surface Detection)
- Electronics: DAE4 Sn1643; Calibrated: 2021.12.30
- Phantom: Twin-SAM; Type: QD 000 P41 Ax; Serial: 2020
- Measurement SW: DASY52, Version 52.10 (4); SEMCAD X Version 14.6.14 (7483)

Ch9400/Area Scan (71x81x1): Interpolated grid: dx=1.500 mm, dy=1.500 mm
Maximum value of SAR (interpolated) = 0.0963 W/kg

Ch9400/Zoom Scan (5x5x7)/Cube 0: Measurement grid: dx=8mm, dy=8mm, dz=5mm
Reference Value = 1.703 V/m; Power Drift = 0.07 dB
Peak SAR (extrapolated) = 0.114 W/kg
SAR(1 g) = 0.074 W/kg; SAR(10 g) = 0.046 W/kg
Maximum value of SAR (measured) = 0.0953 W/kg



0 dB = 0.0953 W/kg

WCDMA Band V_RMC 12.2Kbps_Left Cheek_Ch4182

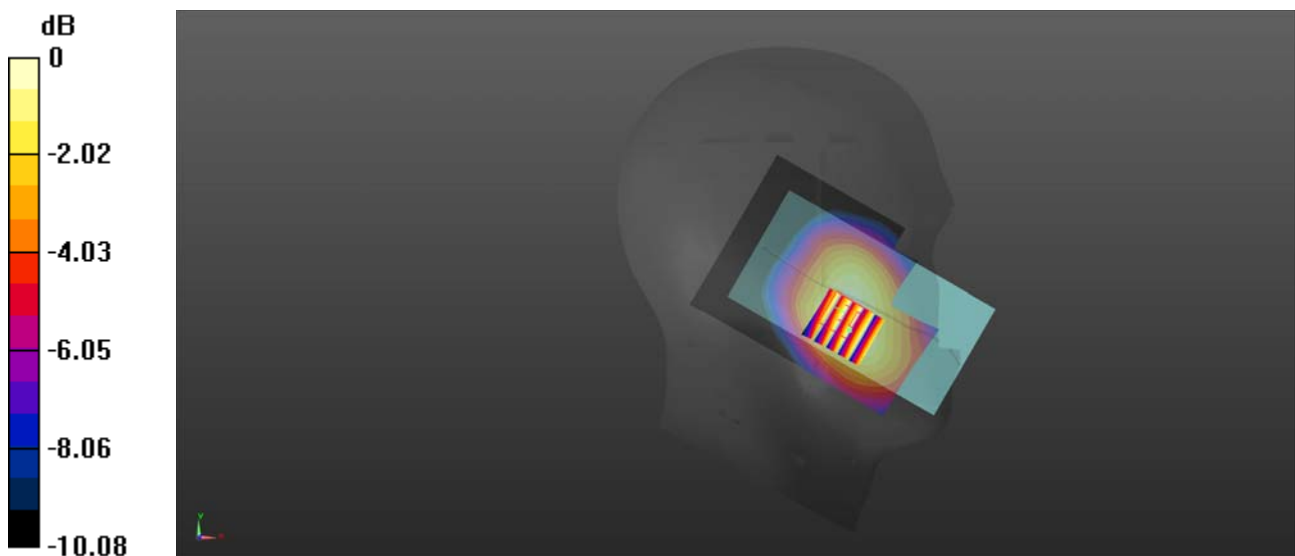
Communication System: UID 0, UMTS-FDD (0); Frequency: 836.4 MHz; Duty Cycle: 1:1
Medium: HSL_900 Medium parameters used: $f = 836.4$ MHz; $\sigma = 0.943$ S/m; $\epsilon_r = 42.978$; $\rho = 1000$ kg/m³
Ambient Temperature : 23.2 °C; Liquid Temperature : 22.1 °C

DASY5 Configuration:

- Probe: EX3DV4 - SN7608; ConvF(9.81, 9.81, 9.81) @ 836.4 MHz; Calibrated: 2022.01.12
- Sensor-Surface: 2mm (Mechanical Surface Detection)
- Electronics: DAE4 Sn1643; Calibrated: 2021.12.30
- Phantom: Twin-SAM; Type: QD 000 P41 Ax; Serial: 2020
- Measurement SW: DASY52, Version 52.10 (4); SEMCAD X Version 14.6.14 (7483)

Ch4182/Area Scan (71x91x1): Interpolated grid: dx=1.500 mm, dy=1.500 mm
Maximum value of SAR (interpolated) = 0.0837 W/kg

Ch4182/Zoom Scan (5x5x7)/Cube 0: Measurement grid: dx=8mm, dy=8mm, dz=5mm
Reference Value = 1.358 V/m; Power Drift = 0.01 dB
Peak SAR (extrapolated) = 0.0920 W/kg
SAR(1 g) = 0.071 W/kg; SAR(10 g) = 0.053 W/kg
Maximum value of SAR (measured) = 0.0815 W/kg



0 dB = 0.0815 W/kg

LTE Band 2_20MHz_QPSK_1RB_0Offset_Left Cheek_Ch18900

Communication System: UID 0, LTE (0); Frequency: 1880 MHz; Duty Cycle: 1:1

Medium: HSL_2000 Medium parameters used: $f = 1880$ MHz; $\sigma = 1.321$ S/m; $\epsilon_r = 39.882$; $\rho = 1000$ kg/m³

Ambient Temperature : 23.2 °C; Liquid Temperature : 22.1 °C

DASY5 Configuration:

- Probe: EX3DV4 - SN7608; ConvF(7.99, 7.99, 7.99) @ 1880 MHz; Calibrated: 2022.01.12
- Sensor-Surface: 2mm (Mechanical Surface Detection)
- Electronics: DAE4 Sn1643; Calibrated: 2021.12.30
- Phantom: Twin-SAM; Type: QD 000 P41 Ax; Serial: 2020
- Measurement SW: DASY52, Version 52.10 (4); SEMCAD X Version 14.6.14 (7483)

Ch18900/Area Scan (71x81x1): Interpolated grid: dx=1.500 mm, dy=1.500 mm

Maximum value of SAR (interpolated) = 0.0906 W/kg

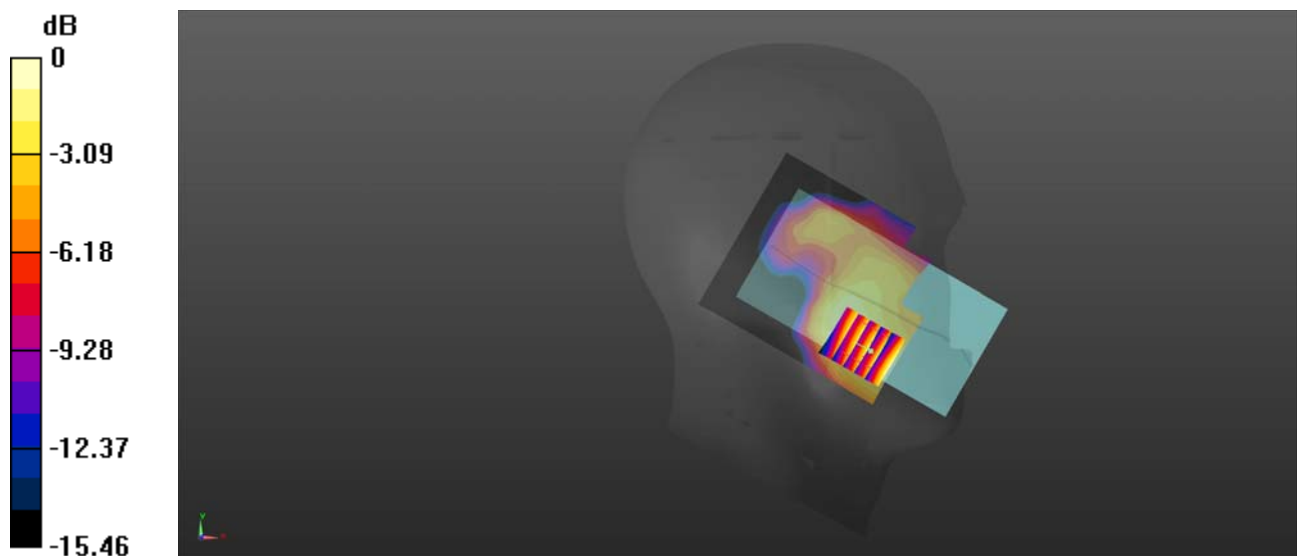
Ch18900/Zoom Scan (5x5x7)/Cube 0: Measurement grid: dx=8mm, dy=8mm, dz=5mm

Reference Value = 2.686 V/m; Power Drift = -0.04 dB

Peak SAR (extrapolated) = 0.101 W/kg

SAR(1 g) = 0.065 W/kg; SAR(10 g) = 0.041 W/kg

Maximum value of SAR (measured) = 0.0840 W/kg



0 dB = 0.0840 W/kg

LTE Band 4_20MHz_QPSK_1RB_0Offset_Left Cheek_Ch20175

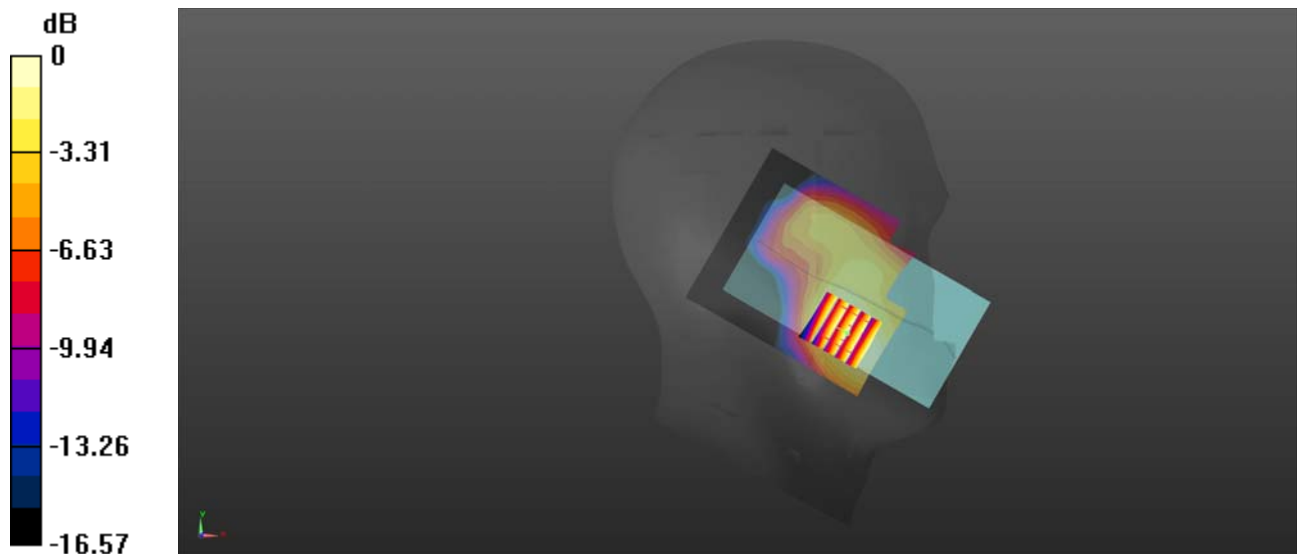
Communication System: UID 0, LTE (0); Frequency: 1732.5 MHz; Duty Cycle: 1:1
Medium: HSL_1800 Medium parameters used: $f = 1733$ MHz; $\sigma = 1.366$ S/m; $\epsilon_r = 41.367$; $\rho = 1000$ kg/m³
Ambient Temperature : 23.2 °C; Liquid Temperature : 22.1 °C

DASY5 Configuration:

- Probe: EX3DV4 - SN7608; ConvF(8.26, 8.26, 8.26) @ 1732.5 MHz; Calibrated: 2022.01.12
- Sensor-Surface: 2mm (Mechanical Surface Detection)
- Electronics: DAE4 Sn1643; Calibrated: 2021.12.30
- Phantom: Twin-SAM; Type: QD 000 P41 Ax; Serial: 2020
- Measurement SW: DASY52, Version 52.10 (4); SEMCAD X Version 14.6.14 (7483)

Ch20175/Area Scan (71x81x1): Interpolated grid: dx=1.500 mm, dy=1.500 mm
Maximum value of SAR (interpolated) = 0.170 W/kg

Ch20175/Zoom Scan (5x5x7)/Cube 0: Measurement grid: dx=8mm, dy=8mm, dz=5mm
Reference Value = 1.771 V/m; Power Drift = 0.06 dB
Peak SAR (extrapolated) = 0.185 W/kg
SAR(1 g) = 0.125 W/kg; SAR(10 g) = 0.082 W/kg
Maximum value of SAR (measured) = 0.156 W/kg



0 dB = 0.156 W/kg

LTE Band 5_10MHz_QPSK_1RB_0Offset_Left Cheek_Ch20525

Communication System: UID 0, LTE (0); Frequency: 836.5 MHz; Duty Cycle: 1:1

Medium: HSL_900 Medium parameters used: $f = 836.5$ MHz; $\sigma = 0.943$ S/m; $\epsilon_r = 42.967$; $\rho = 1000$ kg/m³

Ambient Temperature : 23.2 °C; Liquid Temperature : 22.1 °C

DASY5 Configuration:

- Probe: EX3DV4 - SN7608; ConvF(9.81, 9.81, 9.81) @ 836.5 MHz; Calibrated: 2022.01.12
- Sensor-Surface: 2mm (Mechanical Surface Detection)
- Electronics: DAE4 Sn1643; Calibrated: 2021.12.30
- Phantom: Twin-SAM; Type: QD 000 P41 Ax; Serial: 2020
- Measurement SW: DASY52, Version 52.10 (4); SEMCAD X Version 14.6.14 (7483)

Ch20525/Area Scan (71x101x1): Interpolated grid: dx=1.500 mm, dy=1.500 mm

Maximum value of SAR (interpolated) = 0.0954 W/kg

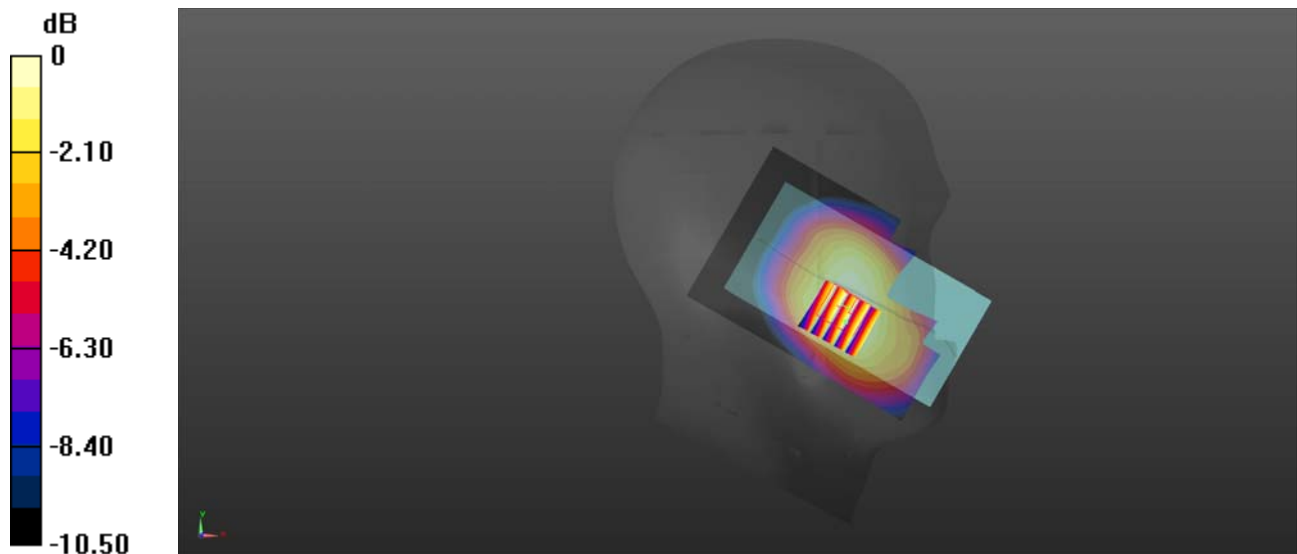
Ch20525/Zoom Scan (5x5x7)/Cube 0: Measurement grid: dx=8mm, dy=8mm, dz=5mm

Reference Value = 1.400 V/m; Power Drift = 0.05 dB

Peak SAR (extrapolated) = 0.0990 W/kg

SAR(1 g) = 0.077 W/kg; SAR(10 g) = 0.057 W/kg

Maximum value of SAR (measured) = 0.0879 W/kg



0 dB = 0.0879 W/kg

LTE Band 7_20MHz_QPSK_1RB_0Offset_Right Cheek_Ch21100

Communication System: UID 0, LTE (0); Frequency: 2535 MHz; Duty Cycle: 1:1

Medium: HSL_2600 Medium parameters used: $f = 2535$ MHz; $\sigma = 1.911$ S/m; $\epsilon_r = 38.489$; $\rho = 1000$ kg/m³

Ambient Temperature : 23.2 °C; Liquid Temperature : 22.4 °C

DASY5 Configuration:

- Probe: EX3DV4 - SN7608; ConvF(7.08, 7.08, 7.08) @ 2600 MHz; Calibrated: 2022.01.12
- Sensor-Surface: 2mm (Mechanical Surface Detection)
- Electronics: DAE4 Sn1643; Calibrated: 2021.12.30
- Phantom: Twin-SAM; Type: QD 000 P41 Ax; Serial: 2020
- Measurement SW: DASY52, Version 52.10 (4); SEMCAD X Version 14.6.14 (7483)

Ch21100/Area Scan (81x101x1): Interpolated grid: dx=1.200 mm, dy=1.200 mm

Maximum value of SAR (interpolated) = 0.0722 W/kg

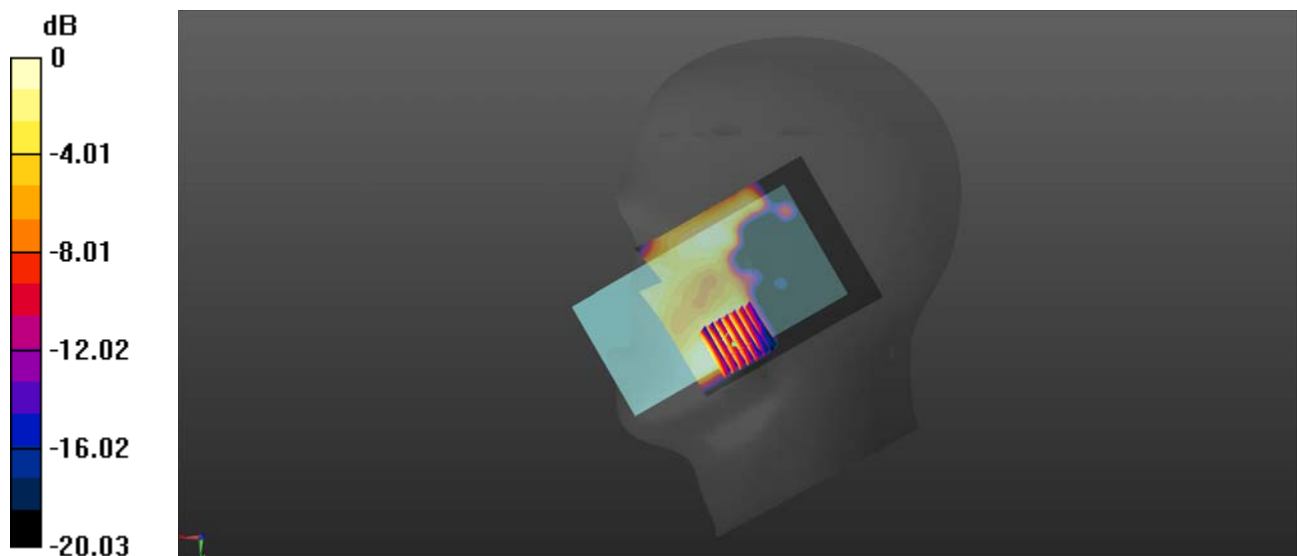
Ch21100/Zoom Scan (7x7x7)/Cube 0: Measurement grid: dx=5mm, dy=5mm, dz=5mm

Reference Value = 1.099 V/m; Power Drift = 0.07 dB

Peak SAR (extrapolated) = 0.0770 W/kg

SAR(1 g) = 0.040 W/kg; SAR(10 g) = 0.021 W/kg

Maximum value of SAR (measured) = 0.0580 W/kg



0 dB = 0.0580 W/kg

WLAN 2.4GHz_802.11b 1Mbps_Right Cheek_Ch1

Communication System: UID 0, WLAN 2.4GHz 802.11b (0); Frequency: 2412 MHz; Duty Cycle: 1:1
Medium: HSL_2450 Medium parameters used: $f = 2412$ MHz; $\sigma = 1.762$ S/m; $\epsilon_r = 38.862$; $\rho = 1000$ kg/m³

Ambient Temperature : 23.2 °C; Liquid Temperature : 22.4 °C

DASY5 Configuration:

- Probe: EX3DV4 - SN7608; ConvF(7.42, 7.42, 7.42) @ 2412 MHz; Calibrated: 2022.01.12
- Sensor-Surface: 2mm (Mechanical Surface Detection)
- Electronics: DAE4 Sn1643; Calibrated: 2021.12.30
- Phantom: Twin-SAM; Type: QD 000 P41 Ax; Serial: 2020
- Measurement SW: DASY52, Version 52.10 (4); SEMCAD X Version 14.6.14 (7483)

Ch1/Area Scan (81x101x1): Interpolated grid: dx=1.200 mm, dy=1.200 mm

Maximum value of SAR (interpolated) = 0.545 W/kg

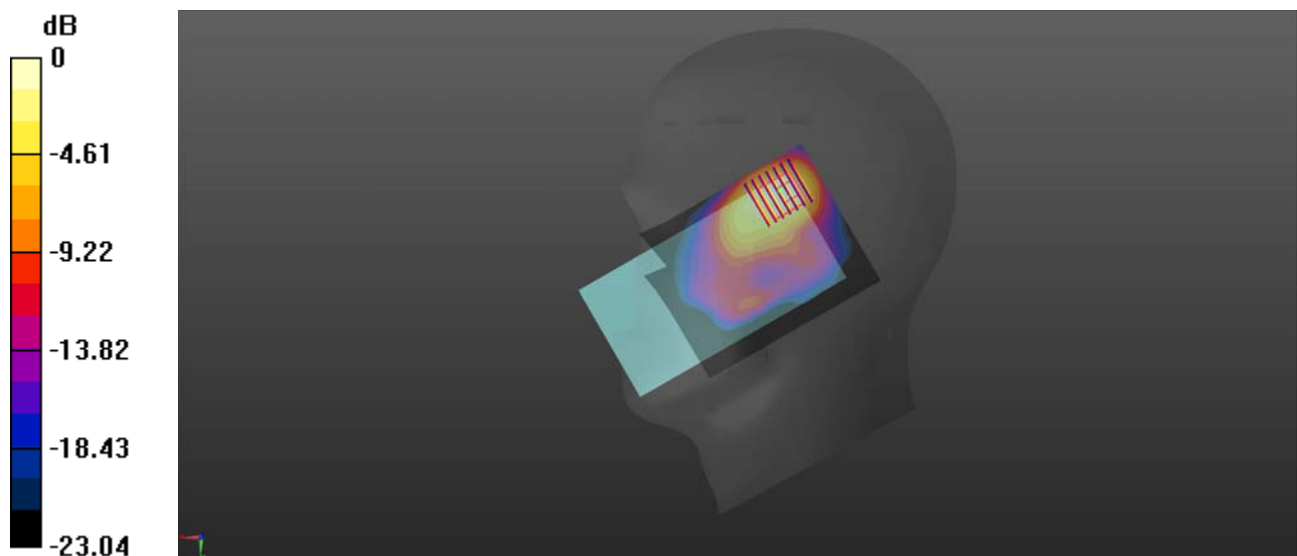
Ch1/Zoom Scan (7x7x7)/Cube 0: Measurement grid: dx=5mm, dy=5mm, dz=5mm

Reference Value = 4.182 V/m; Power Drift = 0.06 dB

Peak SAR (extrapolated) = 0.775 W/kg

SAR(1 g) = 0.342 W/kg; SAR(10 g) = 0.163 W/kg

Maximum value of SAR (measured) = 0.529 W/kg



0 dB = 0.529 W/kg

GSM850_GPRS(2 TX slots)_Back Side_10mm_Ch189

Communication System: UID 0, GSM850(class 10) (0); Frequency: 836.4 MHz; Duty Cycle: 1:4.15
Medium: HSL_900 Medium parameters used: $f = 836.4$ MHz; $\sigma = 0.943$ S/m; $\epsilon_r = 42.978$; $\rho = 1000$ kg/m³

Ambient Temperature : 23.2 °C; Liquid Temperature : 22.1 °C

DASY5 Configuration:

- Probe: EX3DV4 - SN7608; ConvF(9.81, 9.81, 9.81) @ 836.4 MHz; Calibrated: 2022.01.12
- Sensor-Surface: 2mm (Mechanical Surface Detection)
- Electronics: DAE4 Sn1643; Calibrated: 2021.12.30
- Phantom: Twin-SAM; Type: QD 000 P41 Ax; Serial: 2020
- Measurement SW: DASY52, Version 52.10 (4); SEMCAD X Version 14.6.14 (7483)

Ch189/Area Scan (71x121x1): Interpolated grid: dx=1.500 mm, dy=1.500 mm

Maximum value of SAR (interpolated) = 0.529 W/kg

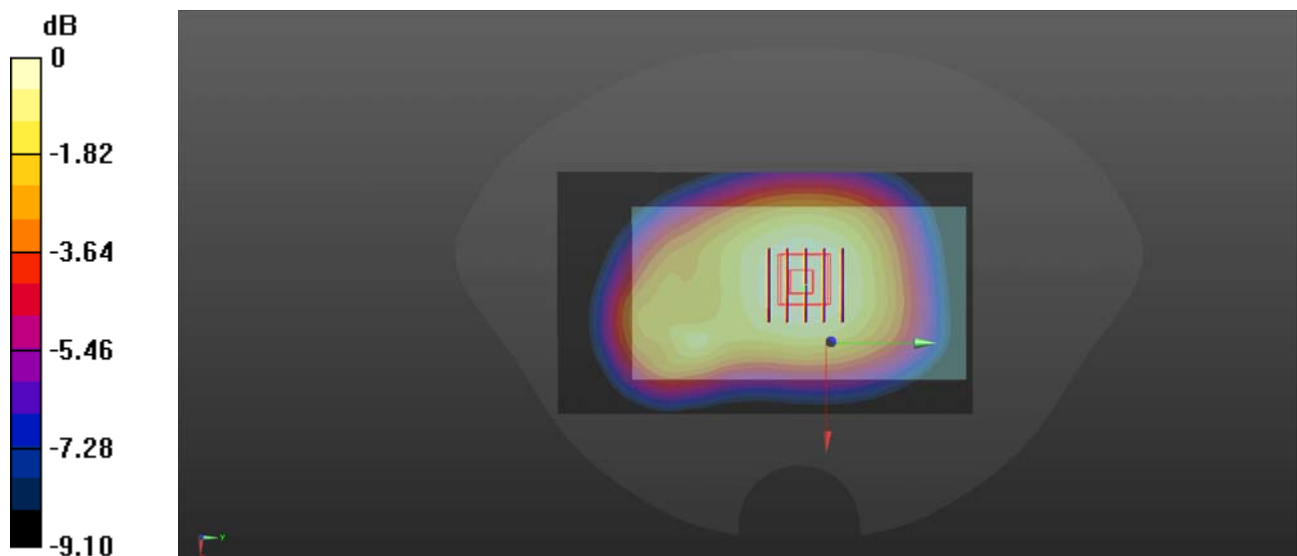
Ch189/Zoom Scan (5x5x7)/Cube 0: Measurement grid: dx=8mm, dy=8mm, dz=5mm

Reference Value = 22.60 V/m; Power Drift = -0.04 dB

Peak SAR (extrapolated) = 0.586 W/kg

SAR(1 g) = 0.445 W/kg; SAR(10 g) = 0.330 W/kg

Maximum value of SAR (measured) = 0.521 W/kg



0 dB = 0.521 W/kg

GSM1900_GPRS(1 TX slots)_Back Side_10mm_Ch661

Communication System: UID 0, GSM1900(class 8) (0); Frequency: 1880 MHz; Duty Cycle: 1:1
Medium: HSL_2000 Medium parameters used: $f = 1880$ MHz; $\sigma = 1.321$ S/m; $\epsilon_r = 39.882$; $\rho = 1000$ kg/m³

Ambient Temperature : 23.2 °C; Liquid Temperature : 22.1 °C

DASY5 Configuration:

- Probe: EX3DV4 - SN7608; ConvF(7.99, 7.99, 7.99) @ 1880 MHz; Calibrated: 2022.01.12
- Sensor-Surface: 2mm (Mechanical Surface Detection)
- Electronics: DAE4 Sn1643; Calibrated: 2021.12.30
- Phantom: Twin-SAM; Type: QD 000 P41 Ax; Serial: 2020
- Measurement SW: DASY52, Version 52.10 (4); SEMCAD X Version 14.6.14 (7483)

Ch661/Area Scan (71x81x1): Interpolated grid: dx=1.500 mm, dy=1.500 mm

Maximum value of SAR (interpolated) = 0.345 W/kg

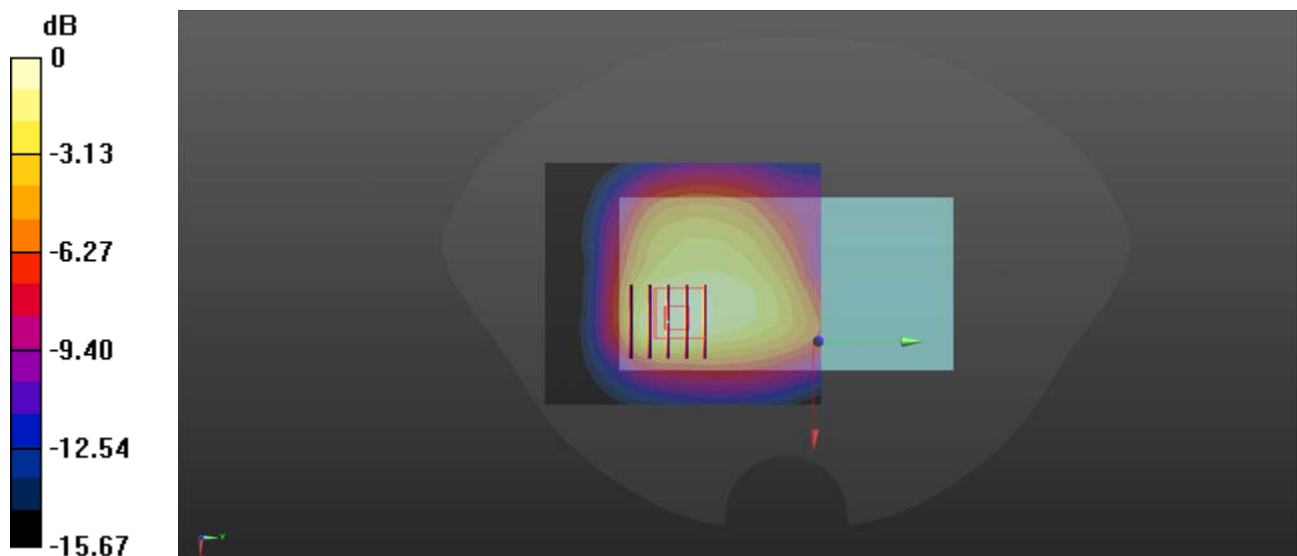
Ch661/Zoom Scan (5x5x7)/Cube 0: Measurement grid: dx=8mm, dy=8mm, dz=5mm

Reference Value = 8.612 V/m; Power Drift = 0.06 dB

Peak SAR (extrapolated) = 0.423 W/kg

SAR(1 g) = 0.248 W/kg; SAR(10 g) = 0.144 W/kg

Maximum value of SAR (measured) = 0.333 W/kg



0 dB = 0.333 W/kg

WCDMA Band II_RMC 12.2Kbps_Back Side_10mm_Ch9400

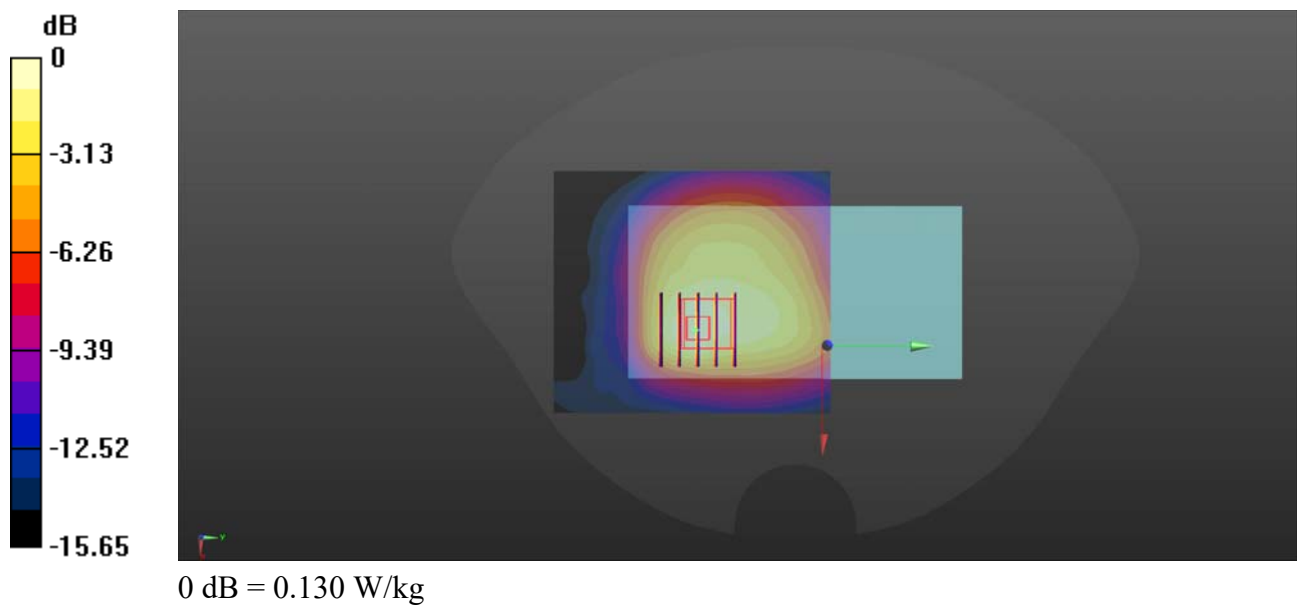
Communication System: UID 0, UMTS-FDD (0); Frequency: 1880 MHz; Duty Cycle: 1:1
 Medium: HSL_2000 Medium parameters used: $f = 1880$ MHz; $\sigma = 1.321$ S/m; $\epsilon_r = 39.882$; $\rho = 1000$ kg/m³
 Ambient Temperature : 23.2 °C; Liquid Temperature : 22.1 °C

DASY5 Configuration:

- Probe: EX3DV4 - SN7608; ConvF(7.99, 7.99, 7.99) @ 1880 MHz; Calibrated: 2022.01.12
- Sensor-Surface: 2mm (Mechanical Surface Detection)
- Electronics: DAE4 Sn1643; Calibrated: 2021.12.30
- Phantom: Twin-SAM; Type: QD 000 P41 Ax; Serial: 2020
- Measurement SW: DASY52, Version 52.10 (4); SEMCAD X Version 14.6.14 (7483)

Ch9400/Area Scan (71x81x1): Interpolated grid: dx=1.500 mm, dy=1.500 mm
 Maximum value of SAR (interpolated) = 0.135 W/kg

Ch9400/Zoom Scan (5x5x7)/Cube 0: Measurement grid: dx=8mm, dy=8mm, dz=5mm
 Reference Value = 5.852 V/m; Power Drift = 0.08 dB
 Peak SAR (extrapolated) = 0.162 W/kg
SAR(1 g) = 0.094 W/kg; SAR(10 g) = 0.054 W/kg
 Maximum value of SAR (measured) = 0.130 W/kg



WCDMA Band V_RMC 12.2Kbps_Back Side_10mm_Ch4182

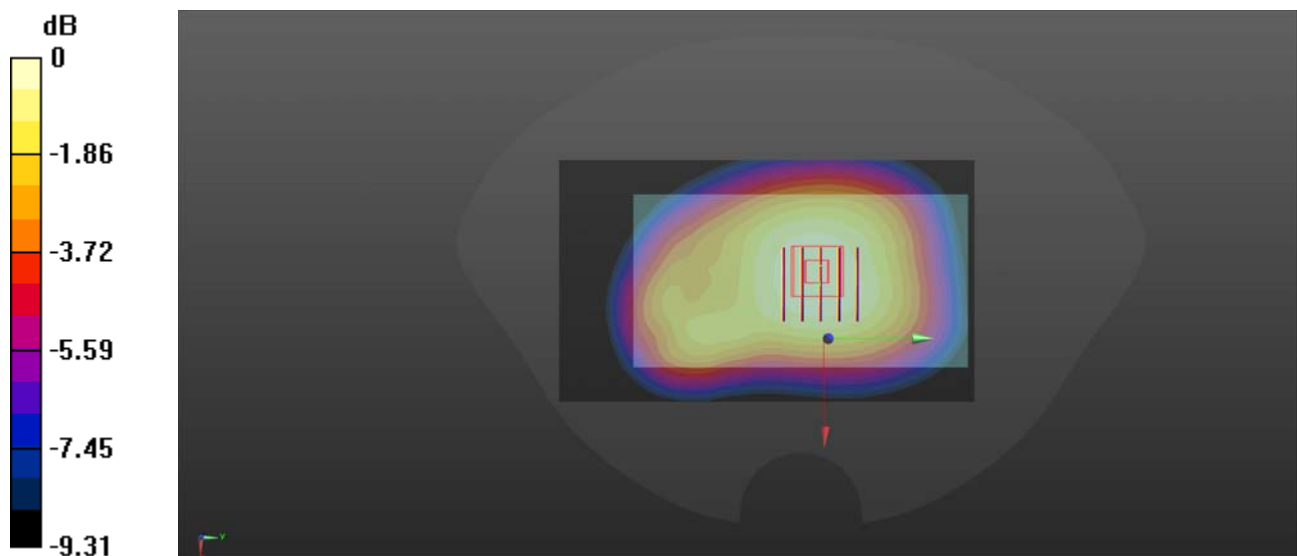
Communication System: UID 0, UMTS-FDD (0); Frequency: 836.4 MHz; Duty Cycle: 1:1
Medium: HSL_900 Medium parameters used: $f = 836.4$ MHz; $\sigma = 0.943$ S/m; $\epsilon_r = 42.978$; $\rho = 1000$ kg/m³
Ambient Temperature : 23.2 °C; Liquid Temperature : 22.1 °C

DASY5 Configuration:

- Probe: EX3DV4 - SN7608; ConvF(9.81, 9.81, 9.81) @ 836.4 MHz; Calibrated: 2022.01.12
- Sensor-Surface: 2mm (Mechanical Surface Detection)
- Electronics: DAE4 Sn1643; Calibrated: 2021.12.30
- Phantom: Twin-SAM; Type: QD 000 P41 Ax; Serial: 2020
- Measurement SW: DASY52, Version 52.10 (4); SEMCAD X Version 14.6.14 (7483)

Ch4182/Area Scan (71x121x1): Interpolated grid: dx=1.500 mm, dy=1.500 mm
Maximum value of SAR (interpolated) = 0.133 W/kg

Ch4182/Zoom Scan (5x5x7)/Cube 0: Measurement grid: dx=8mm, dy=8mm, dz=5mm
Reference Value = 11.19 V/m; Power Drift = -0.09 dB
Peak SAR (extrapolated) = 0.149 W/kg
SAR(1 g) = 0.111 W/kg; SAR(10 g) = 0.081 W/kg
Maximum value of SAR (measured) = 0.131 W/kg



0 dB = 0.131 W/kg

LTE Band 2_20MHz_QPSK_1RB_0Offset_Back Side_10mm_Ch18900

Communication System: UID 0, LTE (0); Frequency: 1880 MHz; Duty Cycle: 1:1

Medium: HSL_2000 Medium parameters used: $f = 1880$ MHz; $\sigma = 1.321$ S/m; $\epsilon_r = 39.882$; $\rho = 1000$ kg/m³

Ambient Temperature : 23.2 °C; Liquid Temperature : 22.1 °C

DASY5 Configuration:

- Probe: EX3DV4 - SN7608; ConvF(7.99, 7.99, 7.99) @ 1880 MHz; Calibrated: 2022.01.12
- Sensor-Surface: 2mm (Mechanical Surface Detection)
- Electronics: DAE4 Sn1643; Calibrated: 2021.12.30
- Phantom: Twin-SAM; Type: QD 000 P41 Ax; Serial: 2020
- Measurement SW: DASY52, Version 52.10 (4); SEMCAD X Version 14.6.14 (7483)

Ch18900/Area Scan (71x81x1): Interpolated grid: dx=1.500 mm, dy=1.500 mm

Maximum value of SAR (interpolated) = 0.164 W/kg

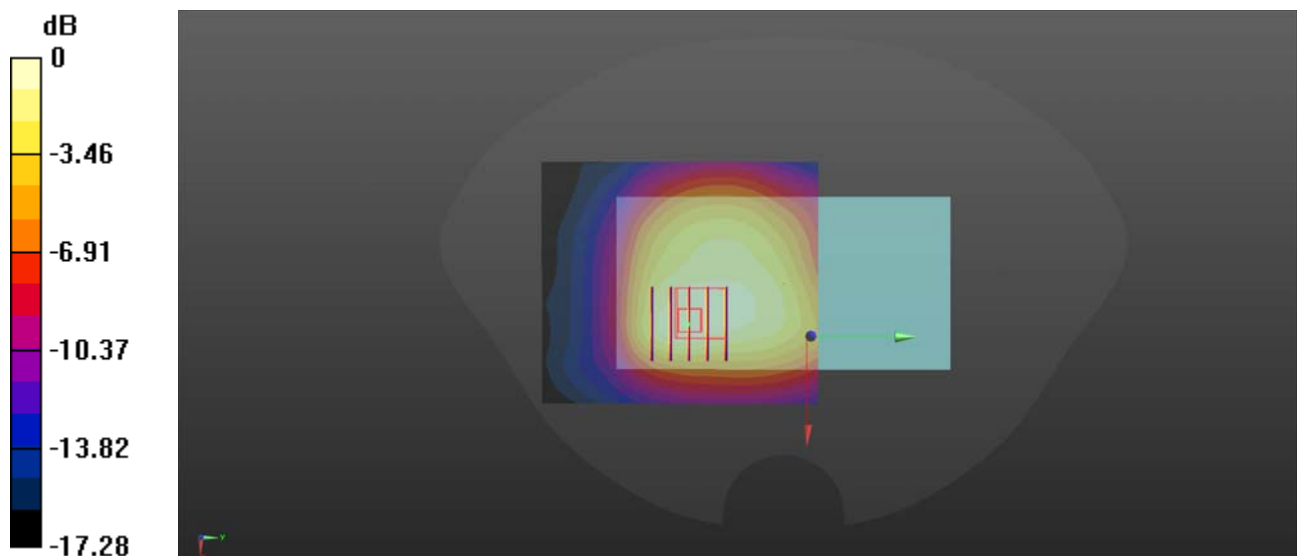
Ch18900/Zoom Scan (5x5x7)/Cube 0: Measurement grid: dx=8mm, dy=8mm, dz=5mm

Reference Value = 6.727 V/m; Power Drift = 0.02 dB

Peak SAR (extrapolated) = 0.183 W/kg

SAR(1 g) = 0.109 W/kg; SAR(10 g) = 0.065 W/kg

Maximum value of SAR (measured) = 0.147 W/kg



0 dB = 0.147 W/kg

LTE Band 4_20MHz_QPSK_1RB_0Offset_Back Side_10mm_Ch20175

Communication System: UID 0, LTE (0); Frequency: 1732.5 MHz; Duty Cycle: 1:1

Medium: HSL_1800 Medium parameters used: $f = 1733$ MHz; $\sigma = 1.366$ S/m; $\epsilon_r = 41.367$; $\rho = 1000$ kg/m³

Ambient Temperature : 23.2 °C; Liquid Temperature : 22.1 °C

DASY5 Configuration:

- Probe: EX3DV4 - SN7608; ConvF(8.26, 8.26, 8.26) @ 1732.5 MHz; Calibrated: 2022.01.12
- Sensor-Surface: 2mm (Mechanical Surface Detection)
- Electronics: DAE4 Sn1643; Calibrated: 2021.12.30
- Phantom: Twin-SAM; Type: QD 000 P41 Ax; Serial: 2020
- Measurement SW: DASY52, Version 52.10 (4); SEMCAD X Version 14.6.14 (7483)

Ch20175/Area Scan (71x81x1): Interpolated grid: dx=1.500 mm, dy=1.500 mm

Maximum value of SAR (interpolated) = 0.323 W/kg

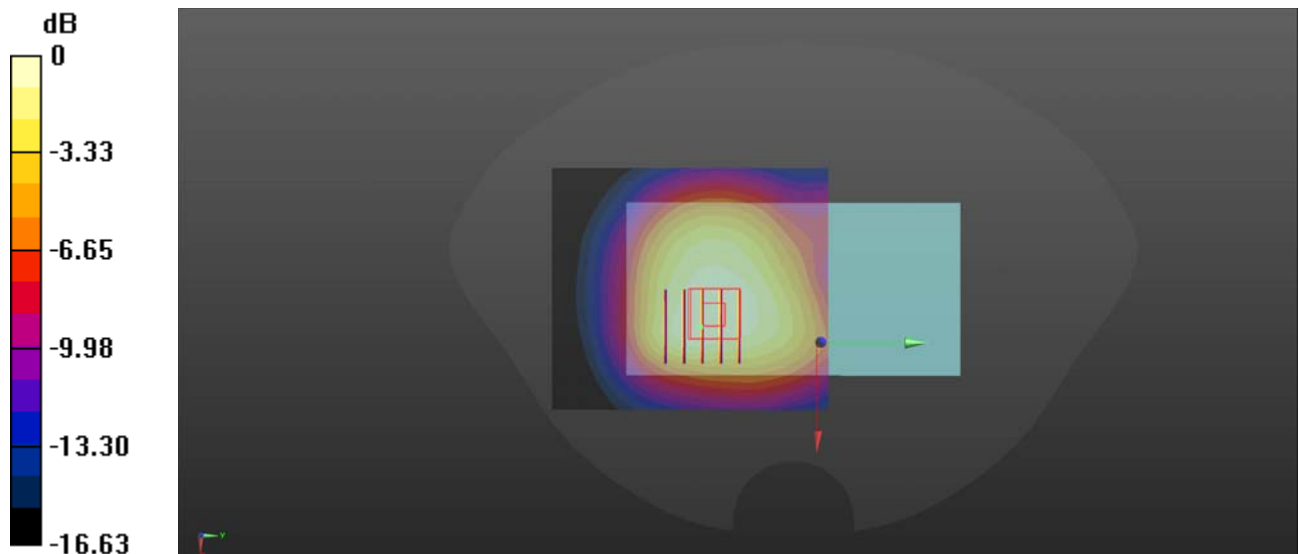
Ch20175/Zoom Scan (5x5x7)/Cube 0: Measurement grid: dx=8mm, dy=8mm, dz=5mm

Reference Value = 8.314 V/m; Power Drift = -0.02 dB

Peak SAR (extrapolated) = 0.377 W/kg

SAR(1 g) = 0.237 W/kg; SAR(10 g) = 0.148 W/kg

Maximum value of SAR (measured) = 0.302 W/kg



0 dB = 0.302 W/kg

LTE Band 5_10MHz_QPSK_1RB_0Offset_Back Side_10mm_Ch20525

Communication System: UID 0, LTE (0); Frequency: 836.5 MHz; Duty Cycle: 1:1

Medium: HSL_900 Medium parameters used: $f = 836.5$ MHz; $\sigma = 0.943$ S/m; $\epsilon_r = 42.967$; $\rho = 1000$ kg/m³

Ambient Temperature : 23.2 °C; Liquid Temperature : 22.1 °C

DASY5 Configuration:

- Probe: EX3DV4 - SN7608; ConvF(9.81, 9.81, 9.81) @ 836.5 MHz; Calibrated: 2022.01.12
- Sensor-Surface: 2mm (Mechanical Surface Detection)
- Electronics: DAE4 Sn1643; Calibrated: 2021.12.30
- Phantom: Twin-SAM; Type: QD 000 P41 Ax; Serial: 2020
- Measurement SW: DASY52, Version 52.10 (4); SEMCAD X Version 14.6.14 (7483)

Ch20525/Area Scan (71x121x1): Interpolated grid: dx=1.500 mm, dy=1.500 mm

Maximum value of SAR (interpolated) = 0.118 W/kg

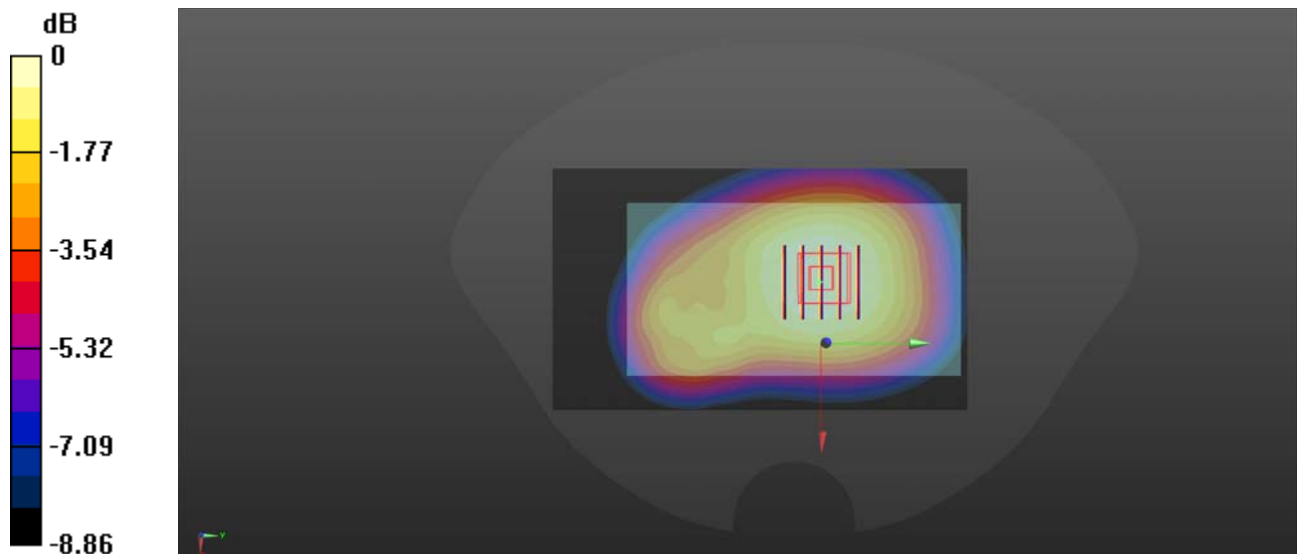
Ch20525/Zoom Scan (5x5x7)/Cube 0: Measurement grid: dx=8mm, dy=8mm, dz=5mm

Reference Value = 10.26 V/m; Power Drift = 0.07 dB

Peak SAR (extrapolated) = 0.133 W/kg

SAR(1 g) = 0.102 W/kg; SAR(10 g) = 0.075 W/kg

Maximum value of SAR (measured) = 0.119 W/kg



0 dB = 0.119 W/kg

LTE Band 7_20MHz_QPSK_1RB_0Offset_Back Side_10mm_Ch21100

Communication System: UID 0, LTE (0); Frequency: 2535 MHz; Duty Cycle: 1:1

Medium: HSL_2600 Medium parameters used: $f = 2535$ MHz; $\sigma = 1.911$ S/m; $\epsilon_r = 38.489$; $\rho = 1000$ kg/m³

Ambient Temperature : 23.2 °C; Liquid Temperature : 22.4 °C

DASY5 Configuration:

- Probe: EX3DV4 - SN7608; ConvF(7.08, 7.08, 7.08) @ 2600 MHz; Calibrated: 2022.01.12
- Sensor-Surface: 2mm (Mechanical Surface Detection)
- Electronics: DAE4 Sn1643; Calibrated: 2021.12.30
- Phantom: Twin-SAM; Type: QD 000 P41 Ax; Serial: 2020
- Measurement SW: DASY52, Version 52.10 (4); SEMCAD X Version 14.6.14 (7483)

Ch21100/Area Scan (81x101x1): Interpolated grid: dx=1.200 mm, dy=1.200 mm

Maximum value of SAR (interpolated) = 0.563 W/kg

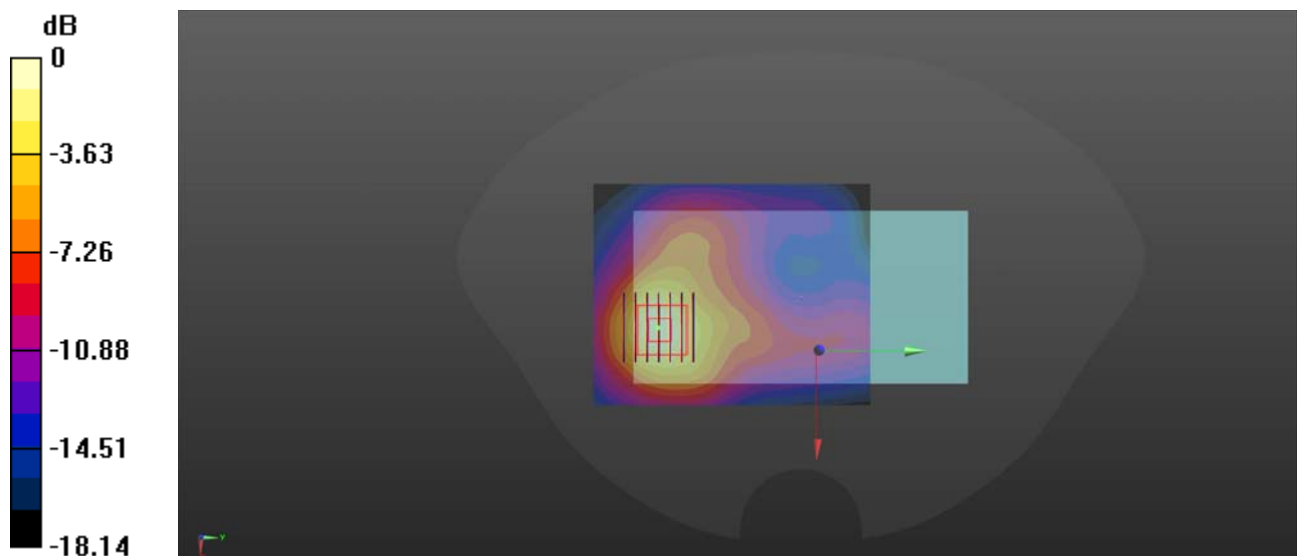
Ch21100/Zoom Scan (7x7x7)/Cube 0: Measurement grid: dx=5mm, dy=5mm, dz=5mm

Reference Value = 2.724 V/m; Power Drift = 0.04 dB

Peak SAR (extrapolated) = 0.743 W/kg

SAR(1 g) = 0.385 W/kg; SAR(10 g) = 0.193 W/kg

Maximum value of SAR (measured) = 0.566 W/kg



0 dB = 0.566 W/kg

LTE Band 7_20MHz_QPSK_1RB_0Offset_Bottom Side_10mm_Ch21100

Communication System: UID 0, LTE (0); Frequency: 2535 MHz; Duty Cycle: 1:1

Medium: HSL_2600 Medium parameters used: $f = 2535$ MHz; $\sigma = 1.911$ S/m; $\epsilon_r = 38.489$; $\rho = 1000$ kg/m³

Ambient Temperature : 23.2 °C; Liquid Temperature : 22.4 °C

DASY5 Configuration:

- Probe: EX3DV4 - SN7608; ConvF(7.08, 7.08, 7.08) @ 2600 MHz; Calibrated: 2022.01.12
- Sensor-Surface: 2mm (Mechanical Surface Detection)
- Electronics: DAE4 Sn1643; Calibrated: 2021.12.30
- Phantom: Twin-SAM; Type: QD 000 P41 Ax; Serial: 2020
- Measurement SW: DASY52, Version 52.10 (4); SEMCAD X Version 14.6.14 (7483)

Ch21100/Area Scan (51x101x1): Interpolated grid: dx=1.200 mm, dy=1.200 mm

Maximum value of SAR (interpolated) = 0.635 W/kg

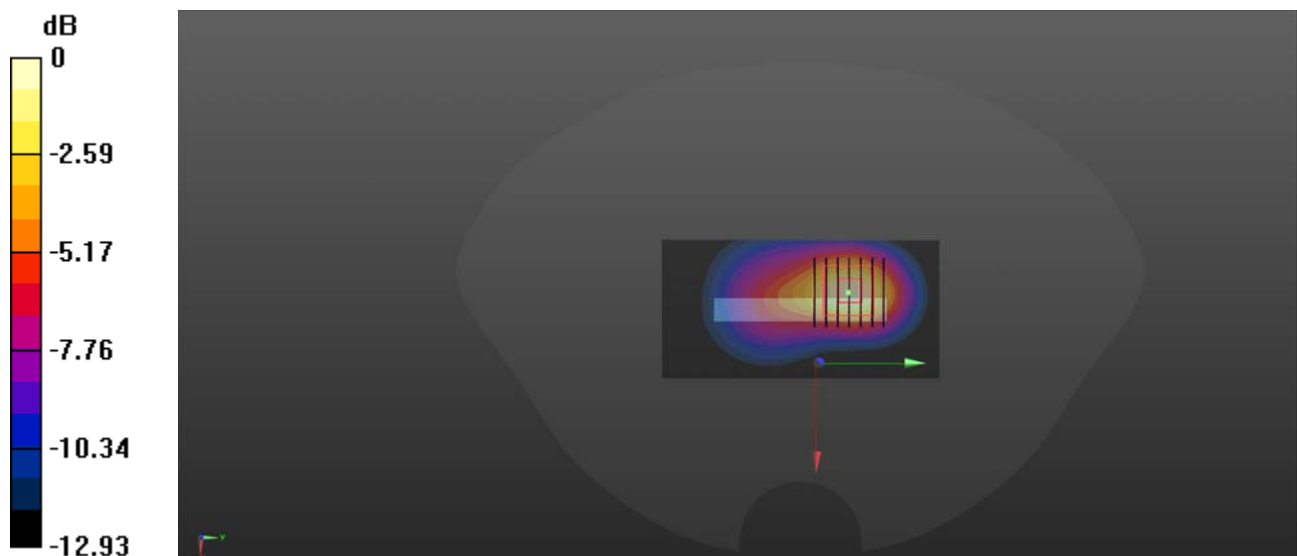
Ch21100/Zoom Scan (7x7x7)/Cube 0: Measurement grid: dx=5mm, dy=5mm, dz=5mm

Reference Value = 9.045 V/m; Power Drift = 0.02 dB

Peak SAR (extrapolated) = 0.825 W/kg

SAR(1 g) = 0.459 W/kg; SAR(10 g) = 0.214 W/kg

Maximum value of SAR (measured) = 0.611 W/kg



0 dB = 0.611 W/kg

WLAN 2.4GHz_802.11b 1Mbps_Back Side_10mm_Ch1

Communication System: UID 0, WLAN 2.4GHz 802.11b (0); Frequency: 2412 MHz; Duty Cycle: 1:1
Medium: HSL_2450 Medium parameters used: $f = 2412$ MHz; $\sigma = 1.762$ S/m; $\epsilon_r = 38.862$; $\rho = 1000$ kg/m³

Ambient Temperature : 23.2 °C; Liquid Temperature : 22.4 °C

DASY5 Configuration:

- Probe: EX3DV4 - SN7608; ConvF(7.42, 7.42, 7.42) @ 2412 MHz; Calibrated: 2022.01.12
- Sensor-Surface: 2mm (Mechanical Surface Detection)
- Electronics: DAE4 Sn1643; Calibrated: 2021.12.30
- Phantom: Twin-SAM; Type: QD 000 P41 Ax; Serial: 2020
- Measurement SW: DASY52, Version 52.10 (4); SEMCAD X Version 14.6.14 (7483)

Ch1/Area Scan (81x101x1): Interpolated grid: dx=1.200 mm, dy=1.200 mm

Maximum value of SAR (interpolated) = 0.136 W/kg

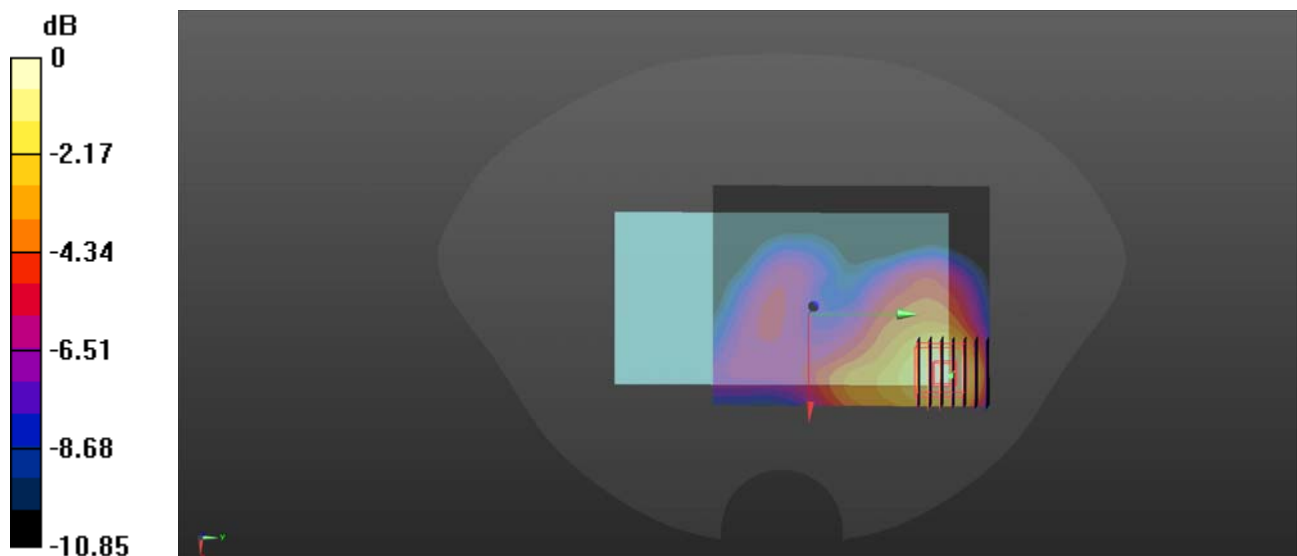
Ch1/Zoom Scan (7x7x7)/Cube 0: Measurement grid: dx=5mm, dy=5mm, dz=5mm

Reference Value = 3.682 V/m; Power Drift = 0.07 dB

Peak SAR (extrapolated) = 0.177 W/kg

SAR(1 g) = 0.086 W/kg; SAR(10 g) = 0.044 W/kg

Maximum value of SAR (measured) = 0.127 W/kg



0 dB = 0.127 W/kg