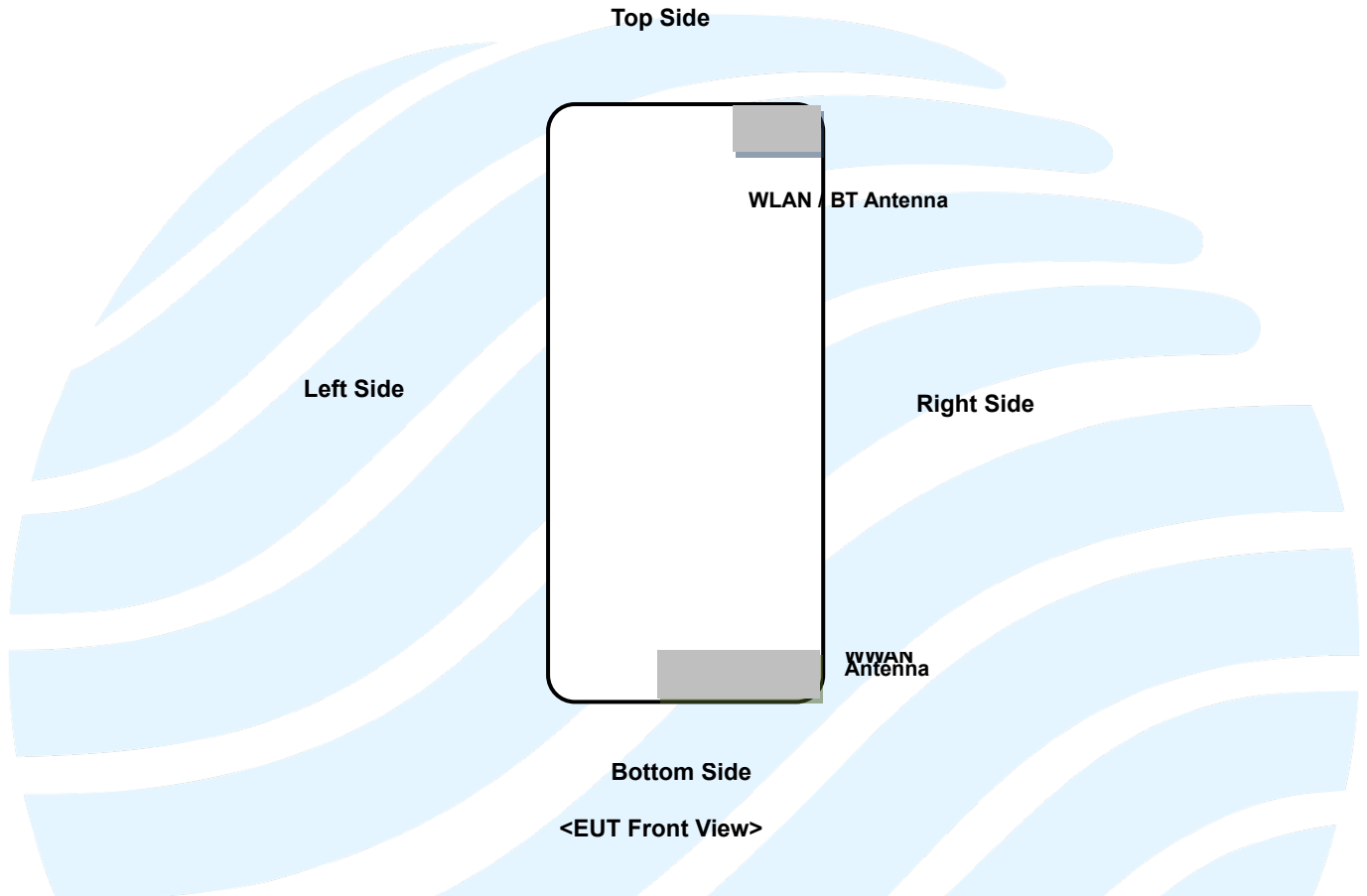


**<Photographs of EUT>**

Refer to the EUT external photographs.

**<Antenna Location>**

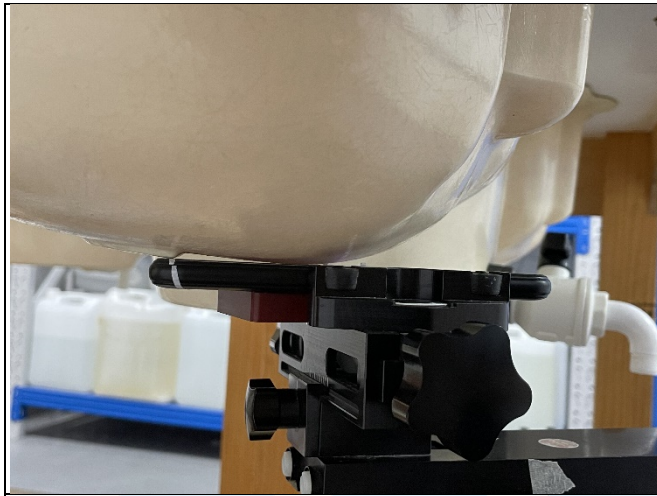


The separation distance for antenna to edge:

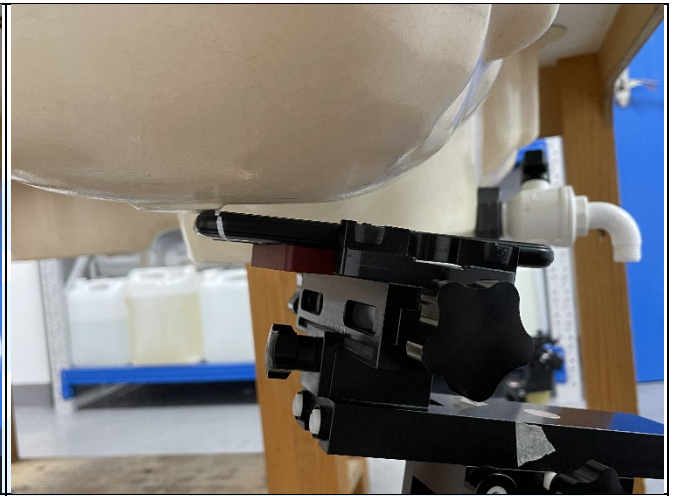
Antenna	Overall Diagonal (mm)	Display Diagonal (mm)	To Left Side (mm)	To Right Side (mm)	To Top Side (mm)	To Bottom Side (mm)
WWAN Ant. 1	155	126	0	34	126	0
WLAN / BT			0	44	0	132

**Shenzhen UnionTrust Quality and Technology Co., Ltd.**

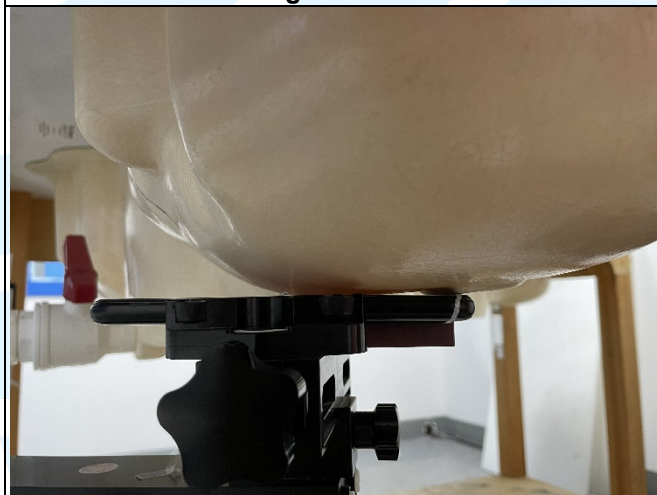
## <Photographs of SAR Setup>



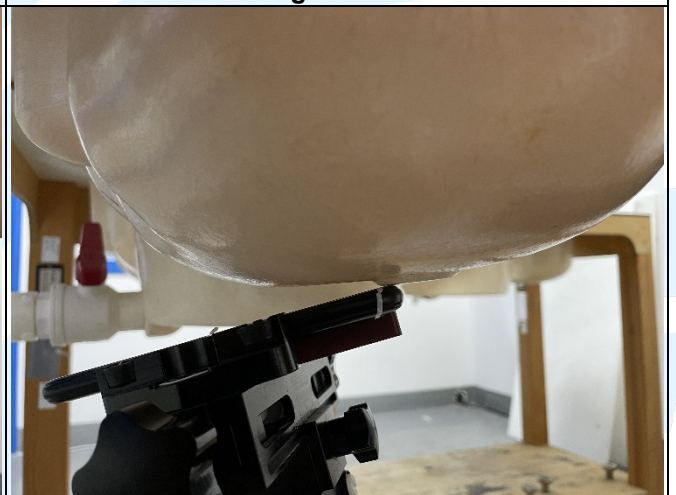
Right Cheek



Right Tilted



Left Cheek



Left Tilted



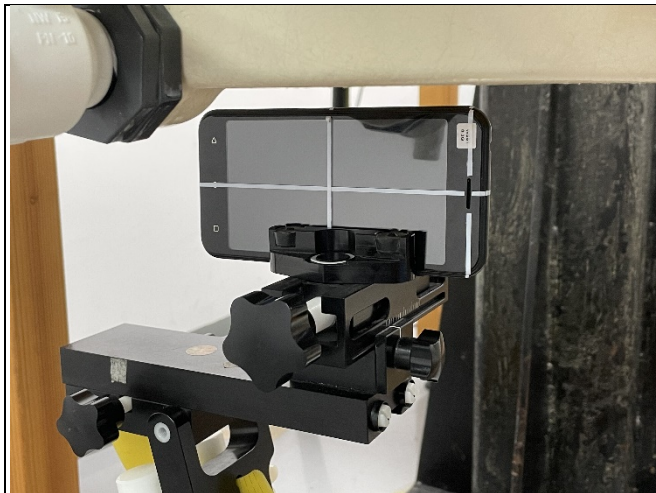
Front Face of EUT with 1.0 cm Gap



Rear Face of EUT with 1.0 cm Gap

### **Shenzhen UnionTrust Quality and Technology Co., Ltd.**

Address: Unit D/E of 9/F and 16/F, Block A, Building 6, Baoneng science and technology park, Longhua district, Shenzhen, China  
Tel: +86-755-28230888 Fax: +86-755-28230886 E-mail: [info@uttlab.com](mailto:info@uttlab.com) [Http://www.uttlab.com](http://www.uttlab.com)  
UTTR-SAR-IEEE Std 1528-2013-V1.1\_Appendix D



Left Side of EUT with 1.0 cm Gap



Right Side of EUT with 1.0 cm Gap



Top Side of EUT with 1.0 cm Gap



Bottom Side of EUT with 1.0 cm Gap

## **Shenzhen UnionTrust Quality and Technology Co., Ltd.**

Address: Unit D/E of 9/F and 16/F, Block A, Building 6, Baoneng science and technology park, Longhua district, Shenzhen, China  
Tel: +86-755-28230888 Fax: +86-755-28230888 E-mail: [info@uttlab.com](mailto:info@uttlab.com) [Http://www.uttlab.com](http://www.uttlab.com)  
UTTR-SAR-IEEE Std 1528-2013-V1.1\_Appendix D