

FCC TEST REPORT

Product Name: Mobile Phone
Trade Mark: BLU
Model No.: VIVO ONE PLUS 2019
Report Number: 180814012RFM-2
Test Standards: FCC 47 CFR Part 24 Subpart E
 FCC 47 CFR Part 2
FCC ID: YHLBLUVOONEPS19
Test Result: PASS
Date of Issue: October 15, 2018

Prepared for:

BLU Products, Inc.
10814 NW 33rd St#100 Doral, FL33172

Prepared by:

Shenzhen UnionTrust Quality and Technology Co., Ltd.
16/F, Block A, Building 6, Baoneng Science and Technology Park,
Qingxiang Road No.1, Longhua New District, Shenzhen, China
TEL: +86-755-2823 0888
FAX: +86-755-2823 0886

Tested by: Henry Lu
 Henry Lu
 Project Engineer

Reviewed by: Kevin Liang
 Kevin Liang
 Assistant Manager

Approved by: Billy Li
 Billy Li
 Technical Director

Date: October 15, 2018



Shenzhen UnionTrust Quality and Technology Co., Ltd.

Version

Version No.	Date	Description
V1.0	October 15, 2018	Original



CONTENTS

1. GENERAL INFORMATION	4
1.1 CLIENT INFORMATION	4
1.2 EUT INFORMATION	4
1.2.1 GENERAL DESCRIPTION OF EUT	4
1.2.2 DESCRIPTION OF ACCESSORIES	5
1.3 PRODUCT SPECIFICATION SUBJECTIVE TO THIS STANDARD	5
1.4 DESCRIPTION OF SUPPORT UNITS	6
1.5 TEST LOCATION	7
1.6 TEST FACILITY	7
1.7 DEVIATION FROM STANDARDS	7
1.8 ABNORMALITIES FROM STANDARD CONDITIONS	7
1.9 OTHER INFORMATION REQUESTED BY THE CUSTOMER	7
1.10 MEASUREMENT UNCERTAINTY	8
2. TEST SUMMARY	9
3. EQUIPMENT LIST	10
4. TEST CONFIGURATION	11
4.1 ENVIRONMENTAL CONDITIONS FOR TESTING	11
4.1.1 NORMAL OR EXTREME TEST CONDITIONS	11
4.2 TEST SETUP	12
4.2.1 FOR RADIATED EMISSIONS TEST SETUP	12
4.2.2 FOR CONDUCTED RF TEST SETUP	14
4.3 TEST CHANNELS	15
4.4 SYSTEM TEST CONFIGURATION	15
4.5 PRE-SCAN	16
5. RADIO TECHNICAL REQUIREMENTS SPECIFICATION	19
5.1 REFERENCE DOCUMENTS FOR TESTING	19
5.2 EQUIVALENT ISOTROPIC RADIATED POWER (EIRP)	19
5.3 CONDUCTED OUTPUT POWER	21
5.4 PEAK-TO-AVERAGE RATIO	22
5.5 99%&26dB BANDWIDTH	28
5.6 BAND EDGE AT ANTENNA TERMINALS	39
5.7 SPURIOUS EMISSIONS AT ANTENNA TERMINALS	51
5.8 FIELD STRENGTH OF SPURIOUS RADIATION	61
5.9 FREQUENCY STABILITY	110
APPENDIX 1 PHOTOS OF TEST SETUP	113
APPENDIX 2 PHOTOS OF EUT CONSTRUCTIONAL DETAILS	113

1. GENERAL INFORMATION

1.1 CLIENT INFORMATION

Applicant:	BLU Products, Inc.
Address of Applicant:	10814 NW 33rd St#100 Doral, FL33172
Manufacturer:	BLU Products, Inc.
Address of Manufacturer:	10814 NW 33rd St#100 Doral, FL33172

1.2 EUT INFORMATION

1.2.1 General Description of EUT

Product Name:	Mobile Phone		
Model No.:	VIVO ONE PLUS 2019		
Add. Model No.:	N/A		
Trade Mark:	BLU		
DUT Stage:	Identical Prototype		
EUT Supports Function:	GSM Bands:	GSM850/1900	
	UTRA Bands:	Band II/ Band IV/ Band V	
	E-UTRA Bands:	FDD Band 2/ Band 4/ Band 5/ Band 7/ Band 12/ Band 17	
	2.4 GHz ISM Band:	IEEE 802.11b/g/n	
		Bluetooth V4.0	
RNSS Bands:	1559 MHz to 1610 MHz	1559 MHz to 1610 MHz	
Sample Received Date:	August 15, 2018		
Sample Tested Date:	August 15, 2018 to September 12, 2018		

1.2.2 Description of Accessories

Adapter	
Trade Mark:	BLU
Model No.:	US-ZC-1500
Input:	100-240 V~50/60 Hz 0.3 A
Output:	5.0 V \equiv 1.5 A
AC Cable:	N/A
DC Cable:	N/A

Battery	
Trade Mark:	BLU
Model No.:	C876444300L
Battery Type:	Lithium-ion Rechargeable Battery
Rated Voltage:	3.8 Vdc
Rated Capacity:	3000 mAh

Cable	
Description:	USB Micro-B Plug Cable
Cable Type:	Shielded without ferrite
Length:	1 Meter

Earphone	
Description:	3.5 mm AUX
Cable Type:	Unshielded without ferrite
Length:	1.2 Meter

1.3 PRODUCT SPECIFICATION SUBJECTIVE TO THIS STANDARD

Support Networks:	GSM, GPRS, EDGE, WCDMA, HSDPA, HSUPA, LTE	
Type of Modulation:	GSM/GPRS:	GMSK
	EDGE:	GMSK, 8PSK
	WCDMA	BPSK
	HSDPA:	QPSK
	HSUPA:	QPSK
Frequency Range:	LTE Band 2:	QPSK, 16QAM
	GSM/GPRS/EDGE 1900:	1850.2-1909.8 MHz
	WCDMA Band II:	1852.4-1907.6 MHz
	LTE Band 2 (Channel Bandwidth: 1.4 MHz):	1850.7-1909.3 MHz
	LTE Band 2 (Channel Bandwidth: 3 MHz):	1851.5-1908.5 MHz
	LTE Band 2 (Channel Bandwidth: 5 MHz):	1852.5-1907.5 MHz
	LTE Band 2 (Channel Bandwidth: 10 MHz):	1855.0-1905.0 MHz
Max RF Output Power:	LTE Band 2 (Channel Bandwidth: 15 MHz):	1857.5-1902.5 MHz
	LTE Band 2 (Channel Bandwidth: 20 MHz):	1860.0-1900.0 MHz
	GSM/GPRS 1900:	28.92dBm
	EDGE 1900:	26.82dBm
	WCDMA Band II:	21.55dBm
	LTE Band 2 (Channel Bandwidth: 1.4 MHz):	21.35dBm

	LTE Band 2 (Channel Bandwidth: 3 MHz):	21.39dBm	
	LTE Band 2 (Channel Bandwidth: 5 MHz):	21.37dBm	
	LTE Band 2 (Channel Bandwidth: 10 MHz):	21.39dBm	
	LTE Band 2 (Channel Bandwidth: 15 MHz):	21.31dBm	
	LTE Band 2 (Channel Bandwidth: 20 MHz):	21.49dBm	
Type of Emission:	GSM/GPRS 1900:	244KGXW	
	EDGE 1900:	249KG7W	
	WCDMA Band II:	4M20F9W	
	LTE Band 2 QPSK	Channel Bandwidth: 1.4 MHz	1M11G7D
		Channel Bandwidth: 3 MHz	2M70G7D
		Channel Bandwidth: 5 MHz	4M54G7D
		Channel Bandwidth: 10 MHz	9M00G7D
		Channel Bandwidth: 15 MHz	13M5G7D
		Channel Bandwidth: 20 MHz	18M0G7D
	LTE Band 2 16QAM	Channel Bandwidth: 1.4 MHz	1M10W7D
		Channel Bandwidth: 3 MHz	2M70W7D
		Channel Bandwidth: 5 MHz	4M53W7D
		Channel Bandwidth: 10 MHz	9M00W7D
Channel Bandwidth: 15 MHz		13M5W7D	
Channel Bandwidth: 20 MHz		18M1W7D	
IEMI:	Radiation: 351812051133984, 35181051133985		
	Conducted: 351812051133976, 35181051133977		
Antenna Type:	FPCB Antenna		
Antenna Gain:	GSM 1900/WCDMA Band II	3.22 dBi	
	LTE Band 2:	3.24 dBi	
GPRS/EDGE Class:	Class 12		
Normal Test Voltage:	3.8 Vdc		
Extreme Test Voltage:	3.5 to 4.35Vdc		
Extreme Test Temperature:	-30 °C to +50 °C		

1.4 DESCRIPTION OF SUPPORT UNITS

The EUT has been tested with associated equipment below.

1) Support Equipment

Description	Manufacturer	Model No.	Serial Number	Supplied by
--	--	--	--	--

2) Support Cable

Cable No.	Description	Connector	Length	Supplied by
1	Antenna Cable	SMA	0.30 Meter	UnionTrust

1.5 TEST LOCATION

Shenzhen UnionTrust Quality and Technology Co., Ltd.

Address: 16/F, Block A, Building 6, Baoneng Science and Technology Park, Qingxiang Road No.1, Longhua New District, Shenzhen, China 518109
Telephone: +86 (0) 755 2823 0888
Fax: +86 (0) 755 2823 0886

1.6 TEST FACILITY

The test facility is recognized, certified, or accredited by the following organizations:

CNAS-Lab Code: L9069

The measuring equipment utilized to perform the tests documented in this report has been calibrated once a year or in accordance with the manufacturer's recommendations, and is traceable under the ISO/IEC/EN 17025 to international or national standards. Equipment has been calibrated by accredited calibration laboratories.

IC-Registration No.: 21600-1

The 3m Semi-anechoic chamber of Shenzhen UnionTrust Quality and Technology Co., Ltd. has been registered by Certification and Engineering Bureau of Industry Canada for radio equipment testing with Registration No.: 21600-1.

A2LA-Lab Certificate No.: 4312.01

Shenzhen UnionTrust Quality and Technology Co., Ltd. has been accredited by A2LA for technical competence in the field of electrical testing, and proved to be in compliance with ISO/IEC 17025: 2005 General Requirements for the Competence of Testing and Calibration Laboratories and any additional program requirements in the identified field of testing.

FCC Accredited Lab.

Designation Number: CN1194
Test Firm Registration Number: 259480

1.7 DEVIATION FROM STANDARDS

None.

1.8 ABNORMALITIES FROM STANDARD CONDITIONS

None.

1.9 OTHER INFORMATION REQUESTED BY THE CUSTOMER

None.

1.10 MEASUREMENT UNCERTAINTY

Where relevant, the following measurement uncertainty levels have been estimated for tests performed on the Product as specified in CISPR 16-4-2. This uncertainty represents an expanded uncertainty expressed at approximately the 95% confidence level using a coverage factor of k=2.

No.	Item	Measurement Uncertainty
1	Conducted emission 9KHz-150KHz	±3.8 dB
2	Conducted emission 150KHz-30MHz	±3.4 dB
3	Radiated emission 9KHz-30MHz	±4.9 dB
4	Radiated emission 30MHz-1GHz	±4.7 dB
5	Radiated emission 1GHz-18GHz	±5.1 dB
6	Radiated emission 18GHz-26GHz	±5.2 dB
7	Radiated emission 26GHz-40GHz	±5.2 dB

2. TEST SUMMARY

FCC 47 CFR Part 24 Subpart E Test Cases			
Test Item	Test Requirement	Test Method	Result
Equivalent Isotropic Radiated Power (EIRP)	FCC 47 CFR Part 2.1046(a) & FCC 47 CFR Part 24.232(c)	ANSI/TIA-603-E-2016 & KDB 971168 D01v03r01	PASS
Conducted Output Power	FCC 47 CFR Part 2.1046(a) & FCC 47 CFR Part 24.232(c)	ANSI/TIA-603-E-2016 & KDB 971168 D01v03r01	PASS
Peak-to-average ratio	FCC 47 CFR Part 24.232(d)	KDB 971168 D01v03r01	PASS
99%&26dB Bandwidth	FCC 47 CFR Part 2.1049(h) & FCC 47 CFR Part 24.238(b)	ANSI/TIA-603-E-2016 & KDB 971168 D01v03r01	PASS
Band Edge at antenna terminals	FCC 47 CFR Part 2.1051 & FCC 47 CFR Part 24.238(a)	ANSI/TIA-603-E-2016 & KDB 971168 D01v03r01	PASS
Spurious emissions at antenna terminals	FCC 47 CFR Part 2.1051 & FCC 47 CFR Part 24.238(a)(b)	ANSI/TIA-603-E-2016 & KDB 971168 D01v03r01	PASS
Field strength of spurious radiation	FCC 47 CFR Part 2.1053 & FCC 47 CFR Part 24.238(a)(b)	ANSI/TIA-603-E-2016 & KDB 971168 D01v03r01	PASS
Frequency stability	FCC 47 CFR Part 2.1055 & FCC 47 CFR Part 24.235	ANSI/TIA-603-E-2016 & KDB 971168 D01v03r01	PASS

3. EQUIPMENT LIST

Radiated Emission Test Equipment List						
Used	Equipment	Manufacturer	Model No.	Serial Number	Cal. date (mm dd, yyyy)	Cal. Due date (mm dd, yyyy)
<input checked="" type="checkbox"/>	3M Chamber & Accessory Equipment	ETS-LINDGREN	3M	N/A	Dec. 20, 2015	Dec. 19, 2018
<input checked="" type="checkbox"/>	Receiver	R&S	ESIB26	100114	Dec. 10, 2017	Dec. 10, 2018
<input checked="" type="checkbox"/>	EXA Spectrum Analyzer	KEYSIGHT	N9010A	MY51440197	Dec.10, 2017	Dec. 10, 2018
<input checked="" type="checkbox"/>	Broadband Antenna	ETS-LINDGREN	3142E	00201566	Dec. 17, 2017	Dec. 17, 2018
<input checked="" type="checkbox"/>	Preamplifier	HP	8447F	2805A02960	Dec. 10, 2017	Dec. 10, 2018
<input checked="" type="checkbox"/>	Broadband Antenna (Pre-amplifier)	ETS-LINDGREN	3142E-PA	00201891	May 19, 2018	May 19, 2019
<input checked="" type="checkbox"/>	Horn Antenna	ETS-LINDGREN	3117	00164202	Dec. 17, 2017	Dec. 17, 2018
<input checked="" type="checkbox"/>	Horn Antenna (Pre-amplifier)	ETS-LINDGREN	3117-PA	00201874	May 22, 2018	May 22, 2019
<input checked="" type="checkbox"/>	Horn Antenna	ETS-LINDGREN	3116C	00200180	May 20, 2018	May 20, 2019
<input checked="" type="checkbox"/>	Horn Antenna (Pre-amplifier)	ETS-LINDGREN	3116C-PA	00202652	Dec. 17, 2017	Dec. 17, 2018
<input checked="" type="checkbox"/>	Multi device Controller	ETS-LINDGREN	7006-001	00160105	N/A	N/A
<input checked="" type="checkbox"/>	Test Software	Audix	e3	Software Version: 9.160323		

2/3/4G RF Test Equipment List						
Used	Equipment	Manufacturer	Model No.	Serial Number	Cal. date (mm dd, yyyy)	Cal. Due date (mm dd, yyyy)
<input checked="" type="checkbox"/>	Receiver	R&S	ESR7	1316.3003K07-101181-K3	Dec. 10, 2017	Dec. 10, 2018
<input checked="" type="checkbox"/>	EXA Spectrum Analyzer	KEYSIGHT	N9010A	MY51440197	Dec.10, 2017	Dec. 10, 2018
<input checked="" type="checkbox"/>	Wideband Radio Communication Tester	R&S	CMW500	116254	June 07, 2018	June 07, 2019
<input type="checkbox"/>	Universal Radio Communication Tester	R&S	CMU200	114713	Dec. 10, 2017	Dec. 10, 2018
<input checked="" type="checkbox"/>	DC Source	KIKUSUI	PWR400L	LK003024	Sep. 14, 2017	Sep. 13, 2018
<input type="checkbox"/>	Temp & Humidity chamber	Espec	GL(U)04KA(W)	16921H201P3	Sep. 14, 2017	Sep. 13, 2018
<input checked="" type="checkbox"/>	Temp & Humidity chamber	Votisch	VT4002	58566133290020	June 05, 2018	June 05, 2019
<input type="checkbox"/>	Test Software	ECIT	AutomationTestSystem	Software Version: 2.170530		

4. TEST CONFIGURATION

4.1 ENVIRONMENTAL CONDITIONS FOR TESTING

4.1.1 Normal or Extreme Test Conditions

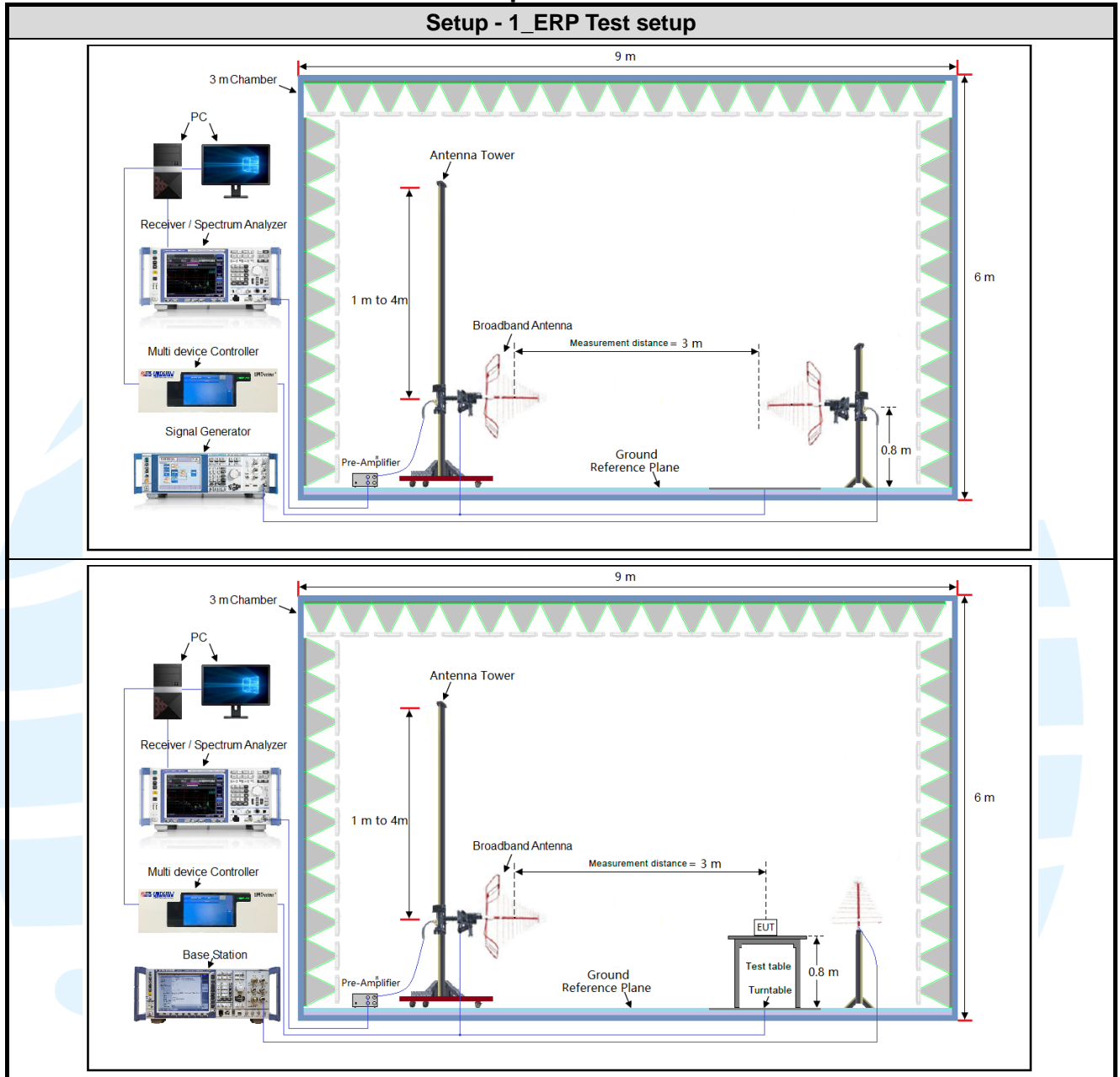
Test Environment	Selected Values During Tests		
Test Condition	Ambient		
	Temperature (°C)	Voltage (V)	Relative Humidity (%)
TN/VN	+15 to +35	3.8	20 to 75
TL/VL	-30	3.5	20 to 75
TH/VL	+50	3.5	20 to 75
TL/VH	-30	4.35	20 to 75
TH/VH	+50	4.35	20 to 75

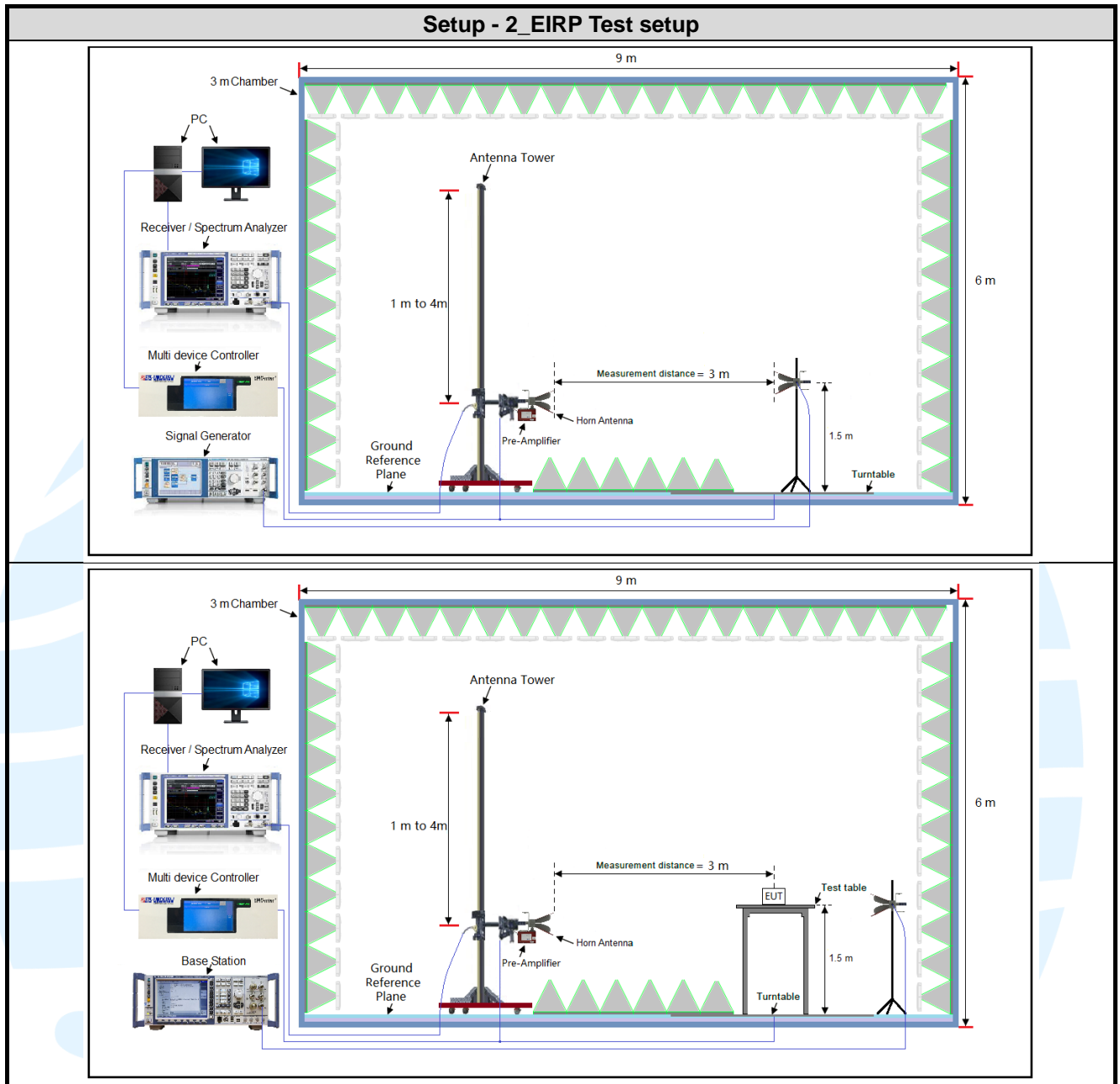
Remark:

- 1) The EUT just work in such extreme temperature of -30 °C to +50 °C and the extreme voltage of 3.5 V to 4.35 V, so here the EUT is tested in the temperature of -30 °C to +50 °C and the voltage of 3.5 V to 4.35 V.
- 2) VN: Normal Voltage; TN: Normal Temperature;
 TL: Low Extreme Test Temperature; TH: High Extreme Test Temperature;
 VL: Low Extreme Test Voltage; VH: High Extreme Test Voltage.

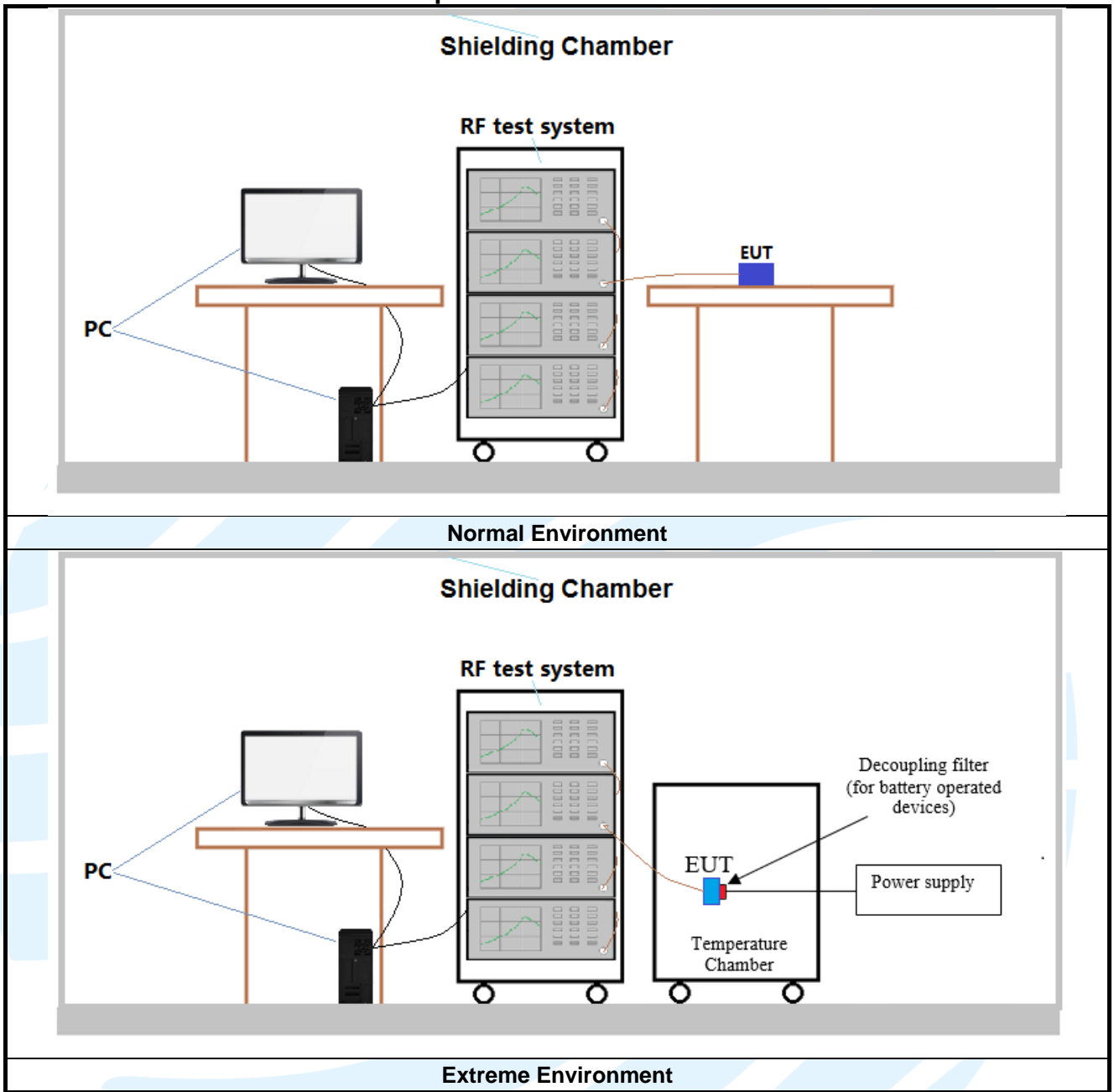
4.2 TEST SETUP

4.2.1 For Radiated Emissions test setup





4.2.2 For Conducted RF test setup



4.3 TEST CHANNELS

Band	Tx/Rx Frequency	RF Channel		
		Low(L)	Middle(M)	High(H)
GSM/GPRS/EDGE1900	Tx (1850 MHz-1910 MHz)	Channel 512	Channel 661	Channel 810
		1850.2 MHz	1880.0 MHz	1909.8 MHz
WCDMA Band II	Tx (1850 MHz-1910 MHz)	Channel 9262	Channel 9400	Channel 9538
		1852.4 MHz	1880.0 MHz	1907.6 MHz

Band	Test Frequency ID	Bandwidth (MHz)	Number [UL]	Frequency of Uplink (MHz)
LTE Band 2 TX: 1850-1910MHz	Low Range	1.4	18607	1850.7
		3	18615	1851.5
		5	18625	1852.5
		10	18650	1855
		15	18675	1857.5
		20	18700	1860
	Middle Range	1.4/3/5/10/15/20	18900	1880
	High Range	1.4	19193	1909.3
		3	19185	1908.5
		5	19175	1907.5
		10	19150	1905
		15	19125	1902.5
		20	19100	1900

4.4 SYSTEM TEST CONFIGURATION

For emissions testing, the equipment under test (EUT) setup to transmit continuously to simplify the measurement methodology. Care was taken to ensure proper power supply voltages during testing. During testing, radiated emission were performed with the EUT set to transmit at the channel with highest output power as worst-case scenario. It was powered by a 3.8Vdc rechargeable Li-on battery. Only the worst case data were recorded in this test report.

Pre-Scan has been conducted to determine the worst-case mode from all possible combinations between available modulations, data rates, X/Y/Z axis, and antenna ports.

The worst case was found when positioned as the table below.

Band	Mode	Antenna Port	Worst-case axis positioning
GSM 1900	1TX	Chain 0	Y axis
EDGE 1900	1TX	Chain 0	Y axis
WCDMA Band II	1TX	Chain 0	Y axis
LTE Band 2	1TX	Chain 0	Y axis

All readings are extrapolated back to the equivalent three meter reading using inverse scaling with distance. Analyzer resolution is 100 kHz or greater for frequencies below 1000MHz. The resolution is 1 MHz or greater for frequencies above 1000MHz. The spurious emissions more than 20 dB below the permissible value are not reported.

Radiated emission measurement were performed from the lowest radio frequency signal generated in the device which is greater than 9 kHz to the tenth harmonic of the highest fundamental frequency or to 40 GHz, whichever is lower.

Shenzhen UnionTrust Quality and Technology Co., Ltd.

Address: 16/F, Block A, Building 6, Baoneng Science and Technology Park, Qingxiang Road No.1, Longhua New District, Shenzhen, China

Tel: +86-755-28230888

Fax: +86-755-28230886

E-mail: info@uttlab.com

[Http://www.uttlab.com](http://www.uttlab.com)

4.5 PRE-SCAN

Pre-scan under all rate at lowest middle and highest channel, find the transmitter power as below:
SIM 1 Card Conducted transmitter power measurement result.

GSM 1900 Maximum Average Power (dBm)			
Channel	512	661	810
Frequency(MHz)	1850.2 MHz	1880.0 MHz	1909.8 MHz
GSM (GMSK, 1Tx-slot)	28.91	28.92	28.80
GPRS (GMSK, 1Tx-slot)	28.91	28.90	28.80
GPRS (GMSK, 2Tx-slot)	28.17	28.16	28.08
GPRS (GMSK, 3Tx-slot)	26.40	26.40	26.36
GPRS (GMSK, 4Tx-slot)	25.29	25.30	25.25
EDGE (8PSK, 1Tx-slot)	26.82	26.65	26.47
EDGE (8PSK, 2Tx-slot)	25.76	25.56	25.52
EDGE (8PSK, 3Tx-slot)	23.59	23.57	23.46
EDGE (8PSK, 4Tx-slot)	22.76	22.60	22.57

WCDMA Band II Maximum Average Power (dBm)			
Channel	9262	9400	9538
Frequency(MHz)	1852.4 MHz	1880.0 MHz	1907.6 MHz
RMC 12.2K	21.47	21.55	21.15
HSDPA Subtest-1	20.51	20.40	20.21
HSDPA Subtest-2	20.45	20.38	20.18
HSDPA Subtest-3	19.99	19.82	19.70
HSDPA Subtest-4	19.93	19.86	19.66
HSUPA Subtest-1	20.51	20.40	20.42
HSUPA Subtest-2	18.52	18.53	18.49
HSUPA Subtest-3	19.51	19.54	19.50
HSUPA Subtest-4	18.05	18.01	18.03
HSUPA Subtest-5	20.51	20.52	20.51
DC-HSDPA Subtest-1	20.45	20.37	20.17
DC-HSDPA Subtest-2	20.43	20.31	20.13
DC-HSDPA Subtest-3	19.93	19.74	19.68
DC-HSDPA Subtest-4	19.92	19.84	19.58

LTE Band 2 Maximum Average Power (dBm)											
Modulation	RB		Test Channel			RB		Test Channel			
	Size	Offset	Low	Mid	High	Size	Offset	Low	Mid	High	
Channel Bandwidth: 1.4 MHz					Channel Bandwidth: 3 MHz						
QPSK	1	0	21.13	20.83	20.78	1	0	21.02	20.96	20.77	
	1	2	21.33	21.18	21.12	1	7	21.39	21.23	21.15	
	1	5	20.96	20.81	20.61	1	14	20.99	20.80	20.70	
	3	0	21.26	21.04	21.35	8	0	20.35	19.98	20.28	
	3	1	21.20	21.01	21.02	8	3	20.14	20.16	20.04	
	3	3	21.28	21.09	21.11	8	7	20.25	20.05	20.09	
16QAM	6	0	20.19	20.07	20.17	15	0	20.35	20.10	20.32	
	1	0	20.26	20.32	20.44	1	0	20.21	20.26	20.43	
	1	2	20.66	20.47	20.61	1	7	20.59	20.43	20.55	
	1	5	20.20	20.10	20.15	1	14	20.25	20.17	20.14	
	3	0	20.15	19.98	20.34	8	0	19.20	19.05	19.18	
	3	1	20.24	20.08	20.14	8	3	19.33	19.09	19.11	
Channel Bandwidth: 5 MHz	3	3	20.19	19.98	20.06	8	7	19.08	19.07	19.13	
	6	0	19.32	18.97	19.21	15	0	19.19	19.02	19.32	
	1	0	21.04	20.86	20.72	1	0	21.04	20.94	20.70	
	1	12	21.37	21.25	21.16	1	24	21.39	21.17	21.00	
	1	24	21.00	20.81	20.66	1	49	20.90	20.79	20.60	
	12	0	20.38	19.97	20.28	25	0	20.23	20.08	20.23	
QPSK	12	6	20.12	20.09	20.18	25	12	20.10	20.09	20.14	
	12	13	20.32	20.13	20.08	25	25	20.22	20.04	20.19	
	25	0	20.21	20.00	20.28	50	0	20.20	20.01	20.15	
	1	0	20.19	20.24	20.38	1	0	20.34	20.30	20.41	
	1	12	20.59	20.46	20.71	1	24	20.56	20.36	20.54	
	1	24	20.09	20.18	20.26	1	49	20.25	20.07	20.21	
16QAM	12	0	19.28	19.07	19.28	25	0	19.22	19.09	19.30	
	12	6	19.21	19.03	19.07	25	12	19.18	19.07	19.12	
	12	13	19.15	19.14	19.13	25	25	19.25	19.11	19.11	
	25	0	19.18	18.97	19.22	50	0	19.27	18.95	19.28	
	Channel Bandwidth: 15 MHz					Channel Bandwidth: 20 MHz					
	QPSK	1	0	21.07	20.83	20.68	1	0	21.16	20.97	20.83
1		37	21.31	21.12	21.11	1	50	21.49	21.27	21.19	
1		74	20.99	20.72	20.68	1	99	21.08	20.90	20.73	
37		0	20.36	19.94	20.26	50	0	20.42	20.10	20.41	
37		19	20.09	20.12	20.10	50	25	20.29	20.18	20.22	
37		39	20.31	20.22	20.11	50	50	20.34	20.23	20.27	
75		0	20.35	20.07	20.23	100	0	20.35	20.13	20.33	
16QAM	1	0	20.23	20.27	20.48	1	0	20.37	20.34	20.48	
	1	37	20.71	20.51	20.61	1	50	20.73	20.54	20.73	
	1	74	20.18	20.11	20.10	1	99	20.28	20.23	20.28	
	37	0	19.16	19.14	19.18	50	0	19.34	19.15	19.37	
	37	19	19.25	19.08	19.11	50	25	19.34	19.18	19.16	
	37	39	19.12	19.04	19.10	50	50	19.26	19.16	19.14	
	75	0	19.14	18.96	19.25	100	0	19.33	19.10	19.40	

Pre-scan all bandwidth and RB, find worse case mode are chosen to the report, the worse mode applicability and tested channel detail as below:

Band	Radiated	Conducted
GSM/GPRS/EDGE 1900	1) GSM (GMSK, 1Tx-slot) Link 2) GPRS (GMSK, 1Tx-slot) Link 3) EDGE (8PSK, 1Tx-slot) Link	1) GSM (GMSK, 1Tx-slot) Link 2) GPRS (GMSK, 1Tx-slot) Link 3) EDGE (8PSK, 1Tx-slot) Link
WCDMA Band II	RMC 12.2Kbps Link	RMC 12.2Kbps Link

LTE worse case mode applicability and tested channel detail as below:

Item	Channel Bandwidth(MHz)						Modulation			RB #			Test		
	1.4	3	5	10	15	20	QPSK	16QAM	64QAM	1	Half	Full	L	M	H
LTE Band 2															
EIRP	<input checked="" type="checkbox"/>	<input checked="" type="checkbox"/>	<input checked="" type="checkbox"/>	<input checked="" type="checkbox"/>	<input checked="" type="checkbox"/>	<input checked="" type="checkbox"/>	<input checked="" type="checkbox"/>	<input checked="" type="checkbox"/>	<input type="checkbox"/>	<input checked="" type="checkbox"/>	<input type="checkbox"/>	<input type="checkbox"/>	<input checked="" type="checkbox"/>	<input checked="" type="checkbox"/>	<input checked="" type="checkbox"/>
Conducted output power	<input checked="" type="checkbox"/>	<input checked="" type="checkbox"/>	<input checked="" type="checkbox"/>	<input checked="" type="checkbox"/>	<input checked="" type="checkbox"/>	<input checked="" type="checkbox"/>	<input checked="" type="checkbox"/>	<input checked="" type="checkbox"/>	<input type="checkbox"/>	<input checked="" type="checkbox"/>	<input checked="" type="checkbox"/>	<input checked="" type="checkbox"/>	<input checked="" type="checkbox"/>	<input checked="" type="checkbox"/>	<input checked="" type="checkbox"/>
Peak-to-average ratio	<input type="checkbox"/>	<input type="checkbox"/>	<input type="checkbox"/>	<input type="checkbox"/>	<input type="checkbox"/>	<input checked="" type="checkbox"/>	<input checked="" type="checkbox"/>	<input checked="" type="checkbox"/>	<input type="checkbox"/>	<input checked="" type="checkbox"/>	<input type="checkbox"/>	<input checked="" type="checkbox"/>	<input checked="" type="checkbox"/>	<input checked="" type="checkbox"/>	<input checked="" type="checkbox"/>
99%&26dB Bandwidth	<input checked="" type="checkbox"/>	<input checked="" type="checkbox"/>	<input checked="" type="checkbox"/>	<input checked="" type="checkbox"/>	<input checked="" type="checkbox"/>	<input checked="" type="checkbox"/>	<input checked="" type="checkbox"/>	<input checked="" type="checkbox"/>	<input type="checkbox"/>	<input type="checkbox"/>	<input type="checkbox"/>	<input checked="" type="checkbox"/>	<input checked="" type="checkbox"/>	<input checked="" type="checkbox"/>	<input checked="" type="checkbox"/>
Band Edge at antenna terminals	<input checked="" type="checkbox"/>	<input checked="" type="checkbox"/>	<input checked="" type="checkbox"/>	<input checked="" type="checkbox"/>	<input checked="" type="checkbox"/>	<input checked="" type="checkbox"/>	<input checked="" type="checkbox"/>	<input checked="" type="checkbox"/>	<input type="checkbox"/>	<input checked="" type="checkbox"/>	<input type="checkbox"/>	<input checked="" type="checkbox"/>	<input checked="" type="checkbox"/>	<input type="checkbox"/>	<input checked="" type="checkbox"/>
Spurious emissions at antenna terminals	<input checked="" type="checkbox"/>	<input checked="" type="checkbox"/>	<input checked="" type="checkbox"/>	<input checked="" type="checkbox"/>	<input checked="" type="checkbox"/>	<input checked="" type="checkbox"/>	<input checked="" type="checkbox"/>	<input checked="" type="checkbox"/>	<input type="checkbox"/>	<input checked="" type="checkbox"/>	<input type="checkbox"/>	<input type="checkbox"/>	<input checked="" type="checkbox"/>	<input checked="" type="checkbox"/>	<input checked="" type="checkbox"/>
Field strength of spurious radiation	<input checked="" type="checkbox"/>	<input checked="" type="checkbox"/>	<input checked="" type="checkbox"/>	<input checked="" type="checkbox"/>	<input checked="" type="checkbox"/>	<input checked="" type="checkbox"/>	<input checked="" type="checkbox"/>	<input type="checkbox"/>	<input type="checkbox"/>	<input checked="" type="checkbox"/>	<input type="checkbox"/>	<input type="checkbox"/>	<input type="checkbox"/>	<input checked="" type="checkbox"/>	<input type="checkbox"/>
Frequency stability	<input type="checkbox"/>	<input type="checkbox"/>	<input type="checkbox"/>	<input type="checkbox"/>	<input type="checkbox"/>	<input checked="" type="checkbox"/>	<input checked="" type="checkbox"/>	<input type="checkbox"/>	<input type="checkbox"/>	<input type="checkbox"/>	<input type="checkbox"/>	<input checked="" type="checkbox"/>	<input type="checkbox"/>	<input checked="" type="checkbox"/>	<input type="checkbox"/>

Remark:
 The mark "" means is chosen for testing;
 The mark "" means is not chosen for testing;
 The mark "--" means is not supported bandwidth.

5. RADIO TECHNICAL REQUIREMENTS SPECIFICATION

5.1 REFERENCE DOCUMENTS FOR TESTING

No.	Identity	Document Title
1	FCC 47 CFR Part 2 Subpart J	Frequency allocations and radio treaty matters; general rules and regulations
2	FCC 47 CFR Part 24 Subpart E	PART 24 – PERSONAL COMMUNICATIONS SERVICES Subpart E – Broadband PCS
3	ANSI/TIA-603-E-2016	Land Mobile FM or PM Communications Equipment Measurement and Performance Standards
4	KDB 971168 D01	KDB 971168 D01 Power Meas License Digital Systems v03r01

5.2 EQUIVALENT ISOTROPIC RADIATED POWER (EIRP)

Test Requirement: FCC 47 CFR Part 2.1046(a) & FCC 47 CFR Part 24.232(c)

Test Method: KDB 971168 D01v03r01 & ANSI/TIA-603-E-2016

Limit:

Mobile and portable stations are limited to 2 watts EIRP.

Test Procedure:

Test procedure as below:

- 1) The EUT was powered ON and placed on a 0.8/1.5m high table at a 3 meter semi/fully Anechoic Chamber. The antenna of the transmitter was extended to its maximum length. Modulation mode and the measuring receiver shall be tuned to the frequency of the transmitter under test.
- 2) The EUT was set 3 meters away from the interference-receiving antenna, which was mounted on the top of a variable-height antenna tower.
- 3) The disturbance of the transmitter was maximized on the test receiver display by raising and lowering from 1m to 4m the receive antenna and by rotating through 360° the turntable. After the fundamental emission was maximized, a field strength measurement was made.
- 4) Steps 1) to 3) were performed with the EUT and the receive antenna in both vertical and horizontal polarization.
- 5) The transmitter was then removed and replaced with another antenna. The center of the antenna was approximately at the same location as the center of the transmitter.
- 6) A signal at the disturbance was fed to the substitution antenna by means of a non-radiating cable. With both the substitution and the receive antennas horizontally polarized, the receive antenna was raised and lowered to obtain a maximum reading at the test receiver. The level of the signal generator was adjusted until the measured field strength level in step 3) is obtained for this set of conditions.
- 7) The output power into the substitution antenna was then measured.
- 8) Steps 6) and 7) were repeated with both antennas polarized.
- 9) Calculate power in dBm by the following formula:

$$ERP(dBm) = Pg(dBm) - \text{cable loss (dB)} + \text{antenna gain (dBd)}$$

$$EIRP(dBm) = Pg(dBm) - \text{cable loss (dB)} + \text{antenna gain (dBi)}$$

$$EIRP = ERP + 2.15dB$$

where:

Pg is the generator output power into the substitution antenna.

- 10) Test the EUT in the lowest channel, the middle channel the Highest channel
- 11) The radiation measurements are performed in X, Y, Z axis positioning for EUT operation mode, and found the Y axis positioning which it is worse case.
- 12) Repeat above procedures until all frequencies measured was complete.

Receiver Setup:

Frequency	Detector	RBW	VBW	Remark
30MHz-1GHz	Peak	100kHz	300kHz	Peak
Above 1GHz	Peak	1MHz	3MHz	Peak

Test Setup: Refer to section 4.2.1 for details.

Instruments Used: Refer to section 3 for details

Test Mode: Link mode

Test Results: Pass

Test Data: See table below

Shenzhen UnionTrust Quality and Technology Co., Ltd.

Address: 16/F, Block A, Building 6, Baoneng Science and Technology Park, Qingxiang Road No.1, Longhua New District, Shenzhen, China

Tel: +86-755-28230888

Fax: +86-755-28230886

E-mail: info@uttlab.com

[Http://www.uttlab.com](http://www.uttlab.com)

Maximum EIRP (dBm)					
Channel	GSM 1Tx-slot	EDGE 1Tx-slot	WCDMA RMC 12.2Kbps	Limit (dBm)	Result
Lowest	32.13	30.04	24.69	33.01	Pass
Middle	32.14	29.87	24.77	33.01	Pass
Highest	32.02	29.69	24.37	33.01	Pass

LTE Band 2 Maximum EIRP (dBm)					
Channel	QPSK; RB:1	16QAM; RB:1	64QAM; RB:1	Limit (dBm)	Result
Channel Bandwidth: 1.4MHz					
Lowest	24.57	23.90	N/A	33.01	Pass
Middle	24.42	23.71	N/A	33.01	Pass
Highest	24.59	23.85	N/A	33.01	Pass
Channel Bandwidth: 3MHz					
Lowest	24.63	23.83	N/A	33.01	Pass
Middle	24.47	23.67	N/A	33.01	Pass
Highest	24.39	23.79	N/A	33.01	Pass
Channel Bandwidth: 5MHz					
Lowest	24.61	23.83	N/A	33.01	Pass
Middle	24.49	23.70	N/A	33.01	Pass
Highest	24.40	23.95	N/A	33.01	Pass
Channel Bandwidth: 10MHz					
Lowest	24.63	23.80	N/A	33.01	Pass
Middle	24.41	23.60	N/A	33.01	Pass
Highest	24.24	23.78	N/A	33.01	Pass
Channel Bandwidth: 15MHz					
Lowest	24.55	23.95	N/A	33.01	Pass
Middle	24.36	23.75	N/A	33.01	Pass
Highest	24.35	23.85	N/A	33.01	Pass
Channel Bandwidth: 20MHz					
Lowest	24.73	23.97	N/A	33.01	Pass
Middle	24.51	23.78	N/A	33.01	Pass
Highest	24.43	23.97	N/A	33.01	Pass

5.3 CONDUCTED OUTPUT POWER

Test Requirement: FCC 47 CFR Part 2.1046(a) & FCC 47 CFR Part 24.232(c)

Test Method: ANSI/TIA-603-E-2016 & KDB 971168 D01v03r01

Limit:

Mobile and portable stations are limited to 2 watts EIRP.

Test Procedure:

The EUT was set up for the maximum power with GSM, GPRS, EDGE, WCDMA, CDMA2000, and LTE link data modulation and link up with simulator. Set the EUT to transmit under low, middle and high channel and record the power level shown on simulator.

Note: The cable loss and attenuator loss were offset into measure device as an amplitude offset.

Test Setup: Refer to section 4.2.2 for details.

Instruments Used: Refer to section 3 for details

Test Mode: Link mode

Test Results: Pass

Test Data: The full result refer to section 4.5 for details.

5.4 PEAK-TO-AVERAGE RATIO

Test Requirement: FCC 47 CFR Part 24.232(d)

Test Method: KDB 971168 D01v03r01

Limit: In measuring transmissions in this band using an average power technique, the peak-to-average ratio (PAR) of the transmission may not exceed 13 dB

Test Procedure:

The transmitter output was connected to a calibrated coaxial cable and coupler, the other end of which was connected to a spectrum analyzer.

- a) Set resolution/measurement bandwidth \geq signal's occupied bandwidth
- b) Set the number of counts to a value that stabilizes the measured CCDF curve
- c) Record the maximum PAPR level associated with a probability of 0.1 %

Note: The cable loss and attenuator loss were offset into measure device as an amplitude offset.

Test Setup: Refer to section 4.2.2 for details.

Instruments Used: Refer to section 3 for details

Test Mode: Link mode

Test Results: Pass

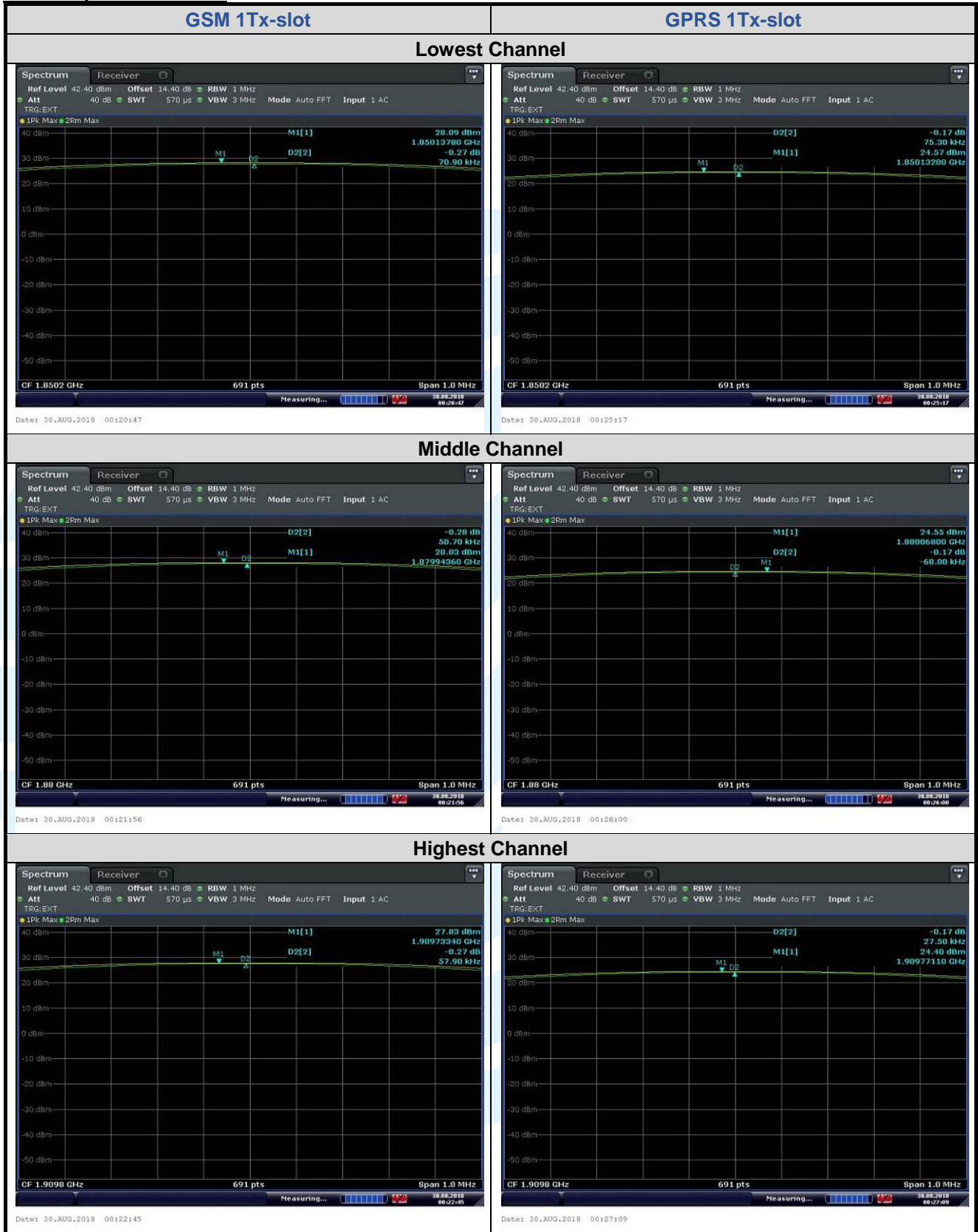
Test Data: See table below

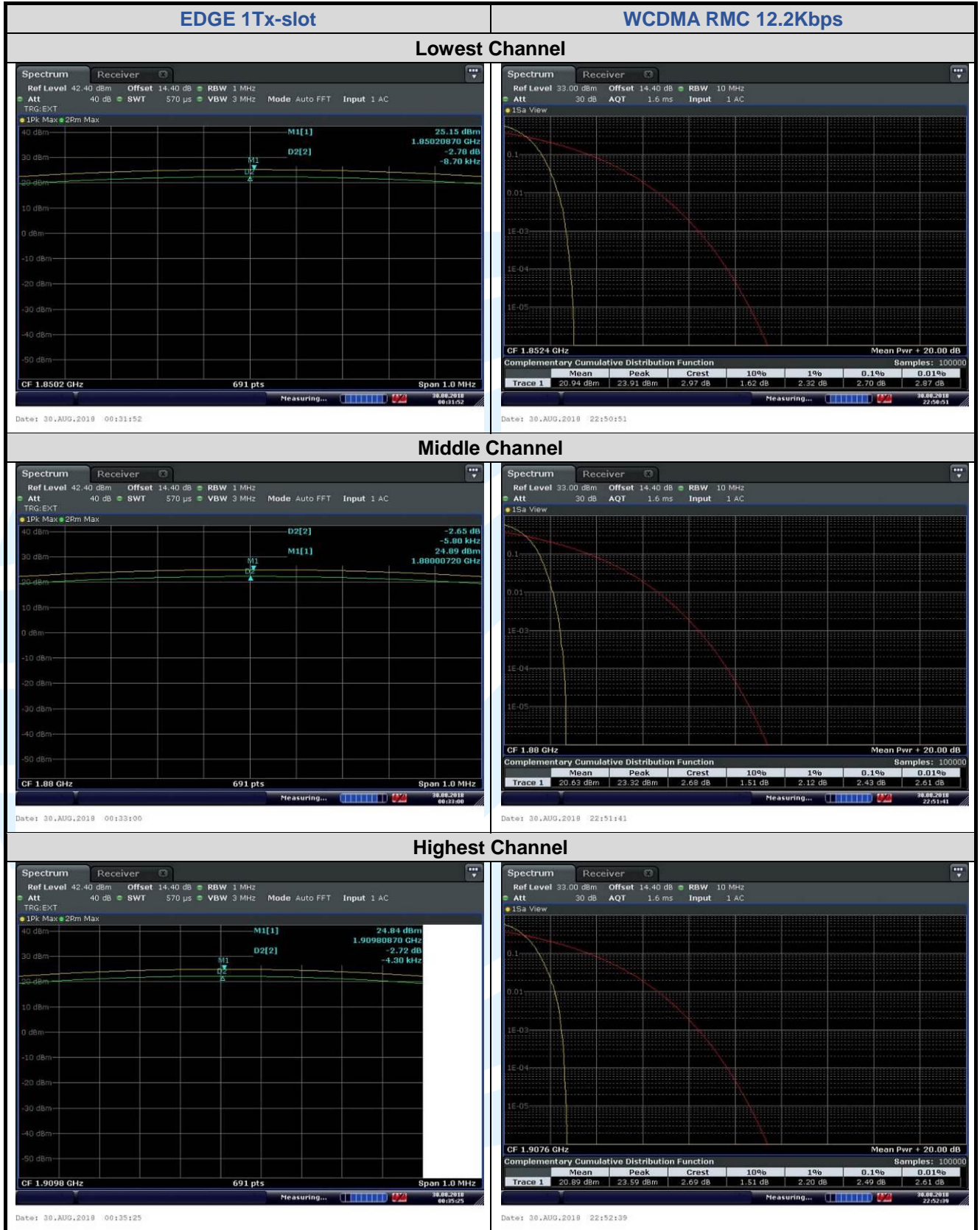
Peak-to-average ratio (dB)					
Channel	GSM 1Tx-slot	GPRS 1Tx-slot	EDGE 1Tx-slot	Limit (dBm)	Result
Lowest	0.27	0.17	2.78	13	Pass
Middle	0.28	0.17	2.65	13	Pass
Highest	0.27	0.17	2.72	13	Pass

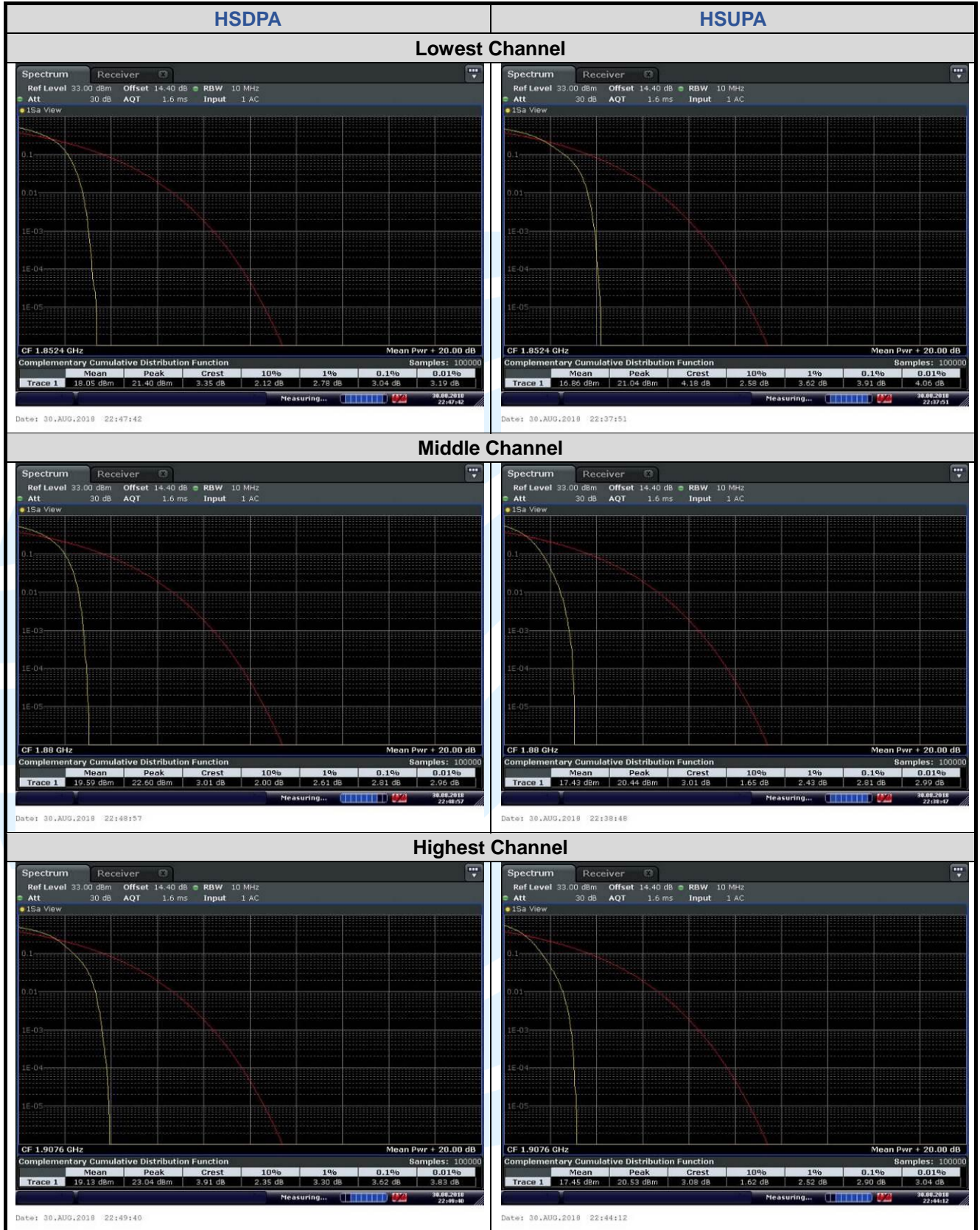
Channel	WCDMA RMC 12.2Kbps	HSDPA	HSUPA	Limit (dBm)	Result
Lowest	2.70	3.04	3.91	13	Pass
Middle	2.43	2.81	2.81	13	Pass
Highest	2.49	3.62	2.90	13	Pass

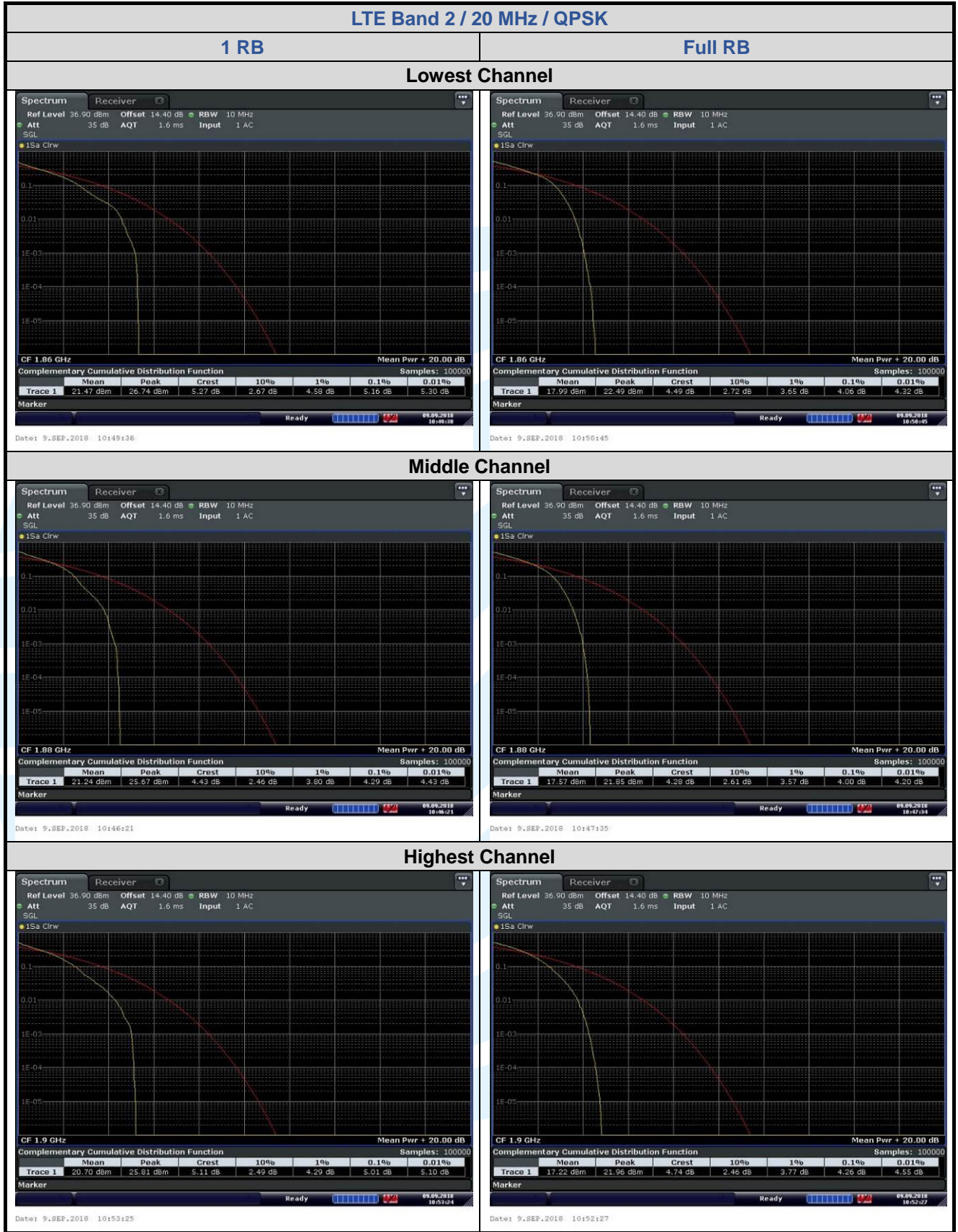
LTE Band 2 Peak-to-average ratio (dB)						
Channel	RB Configuration	Channel Bandwidth: 20 MHz			Limit (dB)	Result
		QPSK	16QAM	64QAM		
Lowest	1 RB	5.16	6.06	N/A	13	Pass
	Full RB	4.06	5.83	N/A	13	Pass
Middle	1 RB	4.29	5.28	N/A	13	Pass
	Full RB	4.00	5.65	N/A	13	Pass
Highest	1 RB	5.01	5.22	N/A	13	Pass
	Full RB	4.26	5.86	N/A	13	Pass

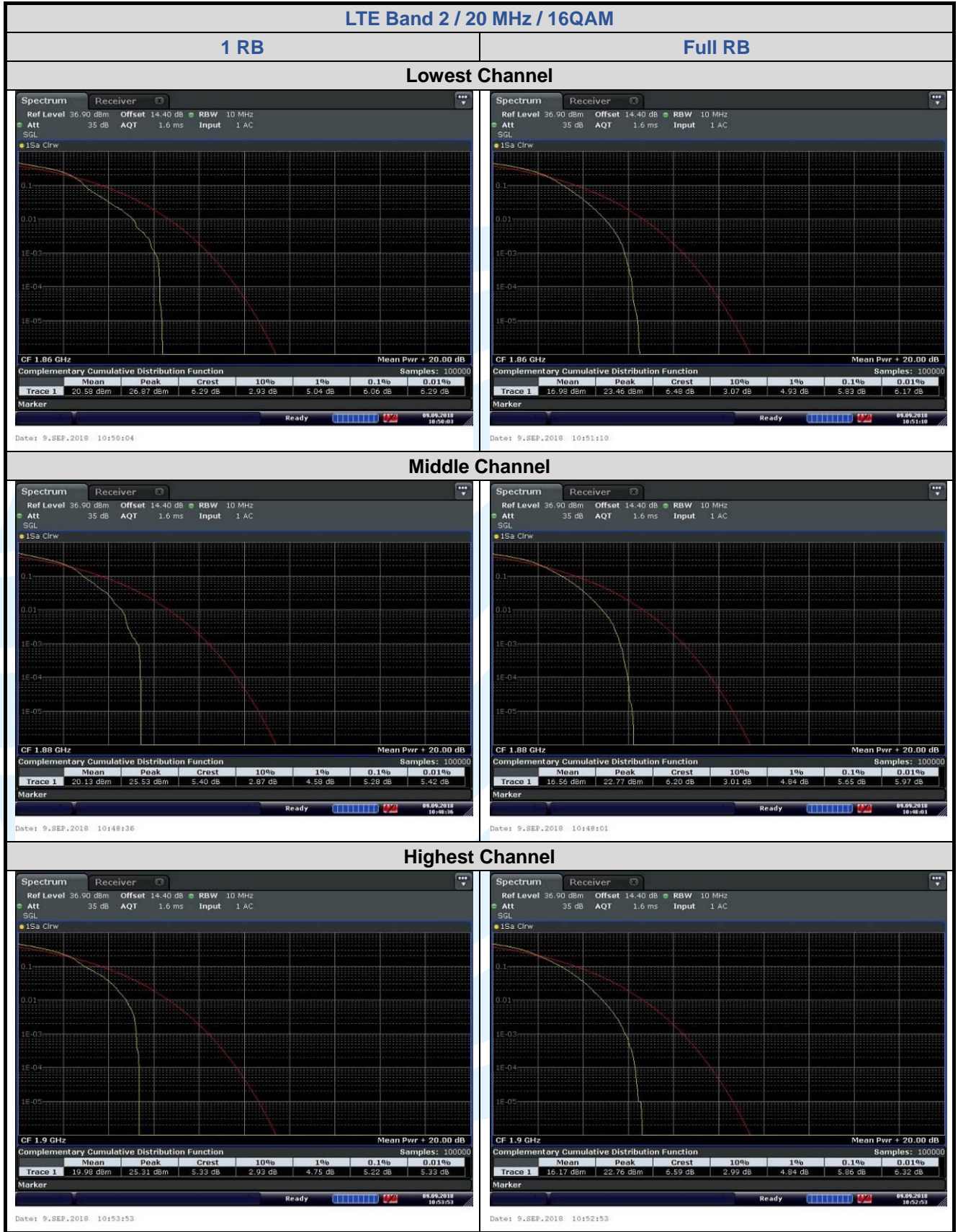
The test plot as follows:











5.5 99%&26DB BANDWIDTH

Test Requirement: FCC 47 CFR Part 2.1049(h) & FCC 47 CFR Part 24.238(b)

Test Method: ANSI/TIA-603-E-2016 & KDB 971168 D01v03r01

Limit: No Limit

Test Procedure:

The transmitter output was connected to a calibrated coaxial cable and coupler, the other end of which was connected to a spectrum analyzer. The occupied bandwidth was measured with the spectrum analyzer at the low, middle and high channel in each band. The 99% and -26dB bandwidths was also measured and recorded.

Note: The cable loss and attenuator loss were offset into measure device as an amplitude offset.

Test Setup: Refer to section 4.2.2 for details.

Instruments Used: Refer to section 3 for details

Test Mode: Link mode

Test Results: Pass

Test Data: See table below

99% & 26 dB Bandwidth				
Test Mode	Channel	Frequency (MHz)	26 dB BW (kHz)	99% BW (kHz)
GSM 1Tx-slot	512	1850.2	320.2	242.08
	661	1880.0	320.9	243.57
	810	1909.8	314.0	244.08
GPRS 1Tx-slot	512	1850.2	317.2	244.02
	661	1880.0	319.0	241.52
	810	1909.8	322.9	244.25
EDGE 1Tx-slot	512	1850.2	315.4	249.10
	661	1880.0	326.1	246.21
	810	1909.8	318.8	246.68

99% & 26 dB Bandwidth				
Test Mode	Channel	Frequency (MHz)	26 dB BW (MHz)	99% BW (MHz)
WCDMA RMC 12.2Kbps	9262	1852.4	4.708	4.1561
	9400	1880.0	4.780	4.1919
	9538	1907.6	4.716	4.1656
HSDPA	9262	1852.4	4.713	4.1820
	9400	1880.0	4.935	4.1961
	9538	1907.6	4.686	4.1518
HSUPA	9262	1852.4	5.045	4.1950
	9400	1880.0	4.806	4.1930
	9538	1907.6	4.712	4.1695

LTE Band 2								
Channel	RB Configuration		26 dB BW (MHz)			99% BW (MHz)		
	Size	Offset	QPSK	16QAM	64QAM	QPSK	16QAM	64QAM
Channel Bandwidth: 1.4 MHz								
Lowest	6	0	1.331	1.306	N/A	1.1085	1.0990	N/A
Middle	6	0	1.339	1.324	N/A	1.0966	1.0928	N/A
Highest	6	0	1.307	1.300	N/A	1.1114	1.1033	N/A
Channel Bandwidth: 3 MHz								
Lowest	15	0	2.932	2.929	N/A	2.6920	2.6944	N/A
Middle	15	0	2.928	2.946	N/A	2.6910	2.6985	N/A
Highest	15	0	2.941	2.929	N/A	2.6997	2.6898	N/A
Channel Bandwidth: 5 MHz								
Lowest	25	0	5.051	5.126	N/A	4.5088	4.5081	N/A
Middle	25	0	5.224	5.110	N/A	4.5369	4.5306	N/A
Highest	25	0	5.170	5.117	N/A	4.5094	4.5124	N/A
Channel Bandwidth: 10 MHz								
Lowest	50	0	10.05	10.04	N/A	8.9772	8.9980	N/A
Middle	50	0	10.13	10.15	N/A	9.0137	9.0265	N/A
Highest	50	0	9.884	10.13	N/A	8.9989	8.9962	N/A
Channel Bandwidth: 15 MHz								
Lowest	75	0	15.05	15.06	N/A	13.478	13.460	N/A
Middle	75	0	15.08	15.08	N/A	13.519	13.497	N/A
Highest	75	0	14.98	14.84	N/A	13.506	13.500	N/A
Channel Bandwidth: 20 MHz								
Lowest	100	0	19.71	19.63	N/A	17.969	17.969	N/A
Middle	100	0	19.78	19.72	N/A	17.964	17.960	N/A
Highest	100	0	19.53	19.66	N/A	18.020	18.066	N/A

The test plot as follows:

