

FCC TEST REPORT

Product Name: Mobile Phone
Trade Mark: BLU
Model No.: VIVO ONE PLUS 2019
Report Number: 180814012RFC-3
Test Standards: FCC 47 CFR Part 15 Subpart C
FCC ID: YHLBLUVOONEPS19
Test Result: PASS
Date of Issue: October 15, 2018

Prepared for:


BLU Products, Inc.
10814 NW 33rd St#100 Doral, FL33172

Prepared by:

Shenzhen UnionTrust Quality and Technology Co., Ltd.
16/F, Block A, Building 6, Baoneng Science and Technology Park,
Qingxiang Road No.1, Longhua New District, Shenzhen, China
TEL: +86-755-2823 0888
FAX: +86-755-2823 0886

Tested by: 
Henry Lu
Project Engineer

Reviewed by: 
Kevin Liang
Assistant Manager

Approved by: 
Billy Li
Technical Director

Date: 



Version

Version No.	Date	Description
V1.0	October 15, 2018	Original



CONTENTS

1. GENERAL INFORMATION	4
1.1 CLIENT INFORMATION	4
1.2 EUT INFORMATION	4
1.2.1 GENERAL DESCRIPTION OF EUT	4
1.2.2 DESCRIPTION OF ACCESSORIES	5
1.3 PRODUCT SPECIFICATION SUBJECTIVE TO THIS STANDARD	6
1.4 OTHER INFORMATION	6
1.5 DESCRIPTION OF SUPPORT UNITS	6
1.6 TEST LOCATION	7
1.7 TEST FACILITY	7
1.8 DEVIATION FROM STANDARDS	7
1.9 ABNORMALITIES FROM STANDARD CONDITIONS	7
1.10 OTHER INFORMATION REQUESTED BY THE CUSTOMER	7
1.11 MEASUREMENT UNCERTAINTY	8
2. TEST SUMMARY	9
3. EQUIPMENT LIST	10
4. TEST CONFIGURATION	11
4.1 ENVIRONMENTAL CONDITIONS FOR TESTING	11
4.1.1 NORMAL OR EXTREME TEST CONDITIONS	11
4.2 TEST CHANNELS	11
4.3 EUT TEST STATUS	11
4.4 PRE-SCAN	11
4.5 TEST SETUP	12
4.5.1 FOR RADIATED EMISSIONS TEST SETUP	12
4.5.2 FOR CONDUCTED EMISSIONS TEST SETUP	13
4.5.3 FOR CONDUCTED RF TEST SETUP	14
4.6 SYSTEM TEST CONFIGURATION	14
4.7 DUTY CYCLE	15
5. RADIO TECHNICAL REQUIREMENTS SPECIFICATION	18
5.1 REFERENCE DOCUMENTS FOR TESTING	18
5.2 ANTENNA REQUIREMENT	18
5.3 CONDUCTED PEAK OUTPUT POWER	19
5.4 6 DB BANDWIDTH	20
5.5 POWER SPECTRAL DENSITY	23
5.6 CONDUCTED OUT OF BAND EMISSION	26
5.7 RADIATED SPURIOUS EMISSIONS	35
5.8 BAND EDGE MEASUREMENTS (RADIATED)	42
5.9 CONDUCTED EMISSION	51
APPENDIX 1 PHOTOS OF TEST SETUP	54
APPENDIX 2 PHOTOS OF EUT CONSTRUCTIONAL DETAILS	54

1. GENERAL INFORMATION

1.1 CLIENT INFORMATION

Applicant:	BLU Products, Inc.
Address of Applicant:	10814 NW 33rd St#100 Doral, FL33172
Manufacturer:	BLU Products, Inc.
Address of Manufacturer:	10814 NW 33rd St#100 Doral, FL33172

1.2 EUT INFORMATION

1.2.1 General Description of EUT

Product Name:	Mobile Phone		
Model No.:	VIVO ONE PLUS 2019		
Add. Model No.:	N/A		
Trade Mark:	BLU		
DUT Stage:	Identical Prototype		
EUT Supports Function:	GSM Bands:	GSM850/1900	
	UTRA Bands:	Band II/ Band IV/ Band V	
	E-UTRA Bands:	FDD Band 2/ Band 4/ Band 5/ Band 7/ Band 12/ Band 17	
	2.4 GHz ISM Band:	IEEE 802.11b/g/n	
		Bluetooth V4.0	
RNSS Bands:	1559 MHz to 1610 MHz	GPS	
IMEI Code:	351812051133976, 35181051133977; 351812051133984, 35181051133985		
Sample Received Date:	August 15, 2018		
Sample Tested Date:	August 15, 2018 to August 18, 2018		

1.2.2 Description of Accessories

Adapter	
Trade Mark:	BLU
Model No.:	US-ZC-1500
Input:	100-240 V~50/60 Hz 0.3 A
Output:	5.0 V \equiv 1.5 A
AC Cable:	N/A
DC Cable:	N/A

Battery	
Trade Mark:	BLU
Model No.:	C876444300L
Battery Type:	Lithium-ion Rechargeable Battery
Rated Voltage:	3.8 Vdc
Rated Capacity:	3000 mAh

Cable	
Description:	USB Micro-B Plug Cable
Cable Type:	Shielded without ferrite
Length:	1 Meter

Earphone	
Description:	3.5 mm AUX
Cable Type:	Unshielded without ferrite
Length:	1.2 Meter

1.3 PRODUCT SPECIFICATION SUBJECTIVE TO THIS STANDARD

Frequency Band	2400 MHz to 2483.5 MHz
Frequency Range:	2412 MHz to 2462 MHz
Support Standards:	IEEE 802.11b, IEEE 802.11g, IEEE 802.11n-HT20, IEEE 802.11n-HT40
Type of Modulation:	IEEE 802.11b: DSSS(CCK, DQPSK, DBPSK) IEEE 802.11g: OFDM(64-QAM, 16-QAM, QPSK, BPSK) IEEE 802.11n-HT20: OFDM(64-QAM, 16-QAM, QPSK, BPSK) IEEE 802.11n-HT40: OFDM(64-QAM, 16-QAM, QPSK, BPSK)
Data Rate:	IEEE 802.11b: Up to 11 Mbps IEEE 802.11g: Up to 54 Mbps IEEE 802.11n-HT20: Up to MCS7 IEEE 802.11n-HT40: Up to MCS7
Number of Channels:	IEEE 802.11b: 11 IEEE 802.11g: 11 IEEE 802.11n-HT20: 11 IEEE 802.11n-HT40: 7
Channel Separation:	5 MHz
Antenna Type:	FPCB Antenna
Antenna Gain:	1.67 dBi
Maximum Peak Power:	IEEE 802.11b: 17.69 dBm IEEE 802.11g: 19.27 dBm IEEE 802.11n-HT20: 18.15 dBm IEEE 802.11n-HT40: 18.95 dBm
Normal Test Voltage:	120V~50 Hz/ 240V~60 Hz/ 3.8 V Battery

1.4 OTHER INFORMATION

Operation Frequency Each of Channel	
IEEE 802.11b, IEEE 802.11g, IEEE 802.11n-HT20	$f = 2407 + 5k \text{ MHz}, k = 1, \dots, 11$
IEEE 802.11n-HT40	$f = 2407 + 5k \text{ MHz}, k = 3, \dots, 9$
Note: f is the operating frequency (MHz); k is the operating channel.	

1.5 DESCRIPTION OF SUPPORT UNITS

The EUT has been tested with associated equipment below.

1) Support Equipment

Description	Manufacturer	Model No.	Serial Number	Supplied by
--	--	--	--	--

2) Support Cable

Cable No.	Description	Connector	Length	Supplied by
1	Antenna Cable	SMA	0.30 Meter	UnionTrust

1.6 TEST LOCATION

Shenzhen UnionTrust Quality and Technology Co., Ltd.

Address: 16/F, Block A, Building 6, Baoneng Science and Technology Park, Qingxiang Road No.1, Longhua New District, Shenzhen, China 518109
Telephone: +86 (0) 755 2823 0888
Fax: +86 (0) 755 2823 0886

1.7 TEST FACILITY

The test facility is recognized, certified, or accredited by the following organizations:

CNAS-Lab Code: L9069

The measuring equipment utilized to perform the tests documented in this report has been calibrated once a year or in accordance with the manufacturer's recommendations, and is traceable under the ISO/IEC/EN 17025 to international or national standards. Equipment has been calibrated by accredited calibration laboratories.

IC-Registration No.: 21600-1

The 3m Semi-anechoic chamber of Shenzhen UnionTrust Quality and Technology Co., Ltd. has been registered by Certification and Engineering Bureau of Industry Canada for radio equipment testing with Registration No.: 21600-1.

A2LA-Lab Certificate No.: 4312.01

Shenzhen UnionTrust Quality and Technology Co., Ltd. has been accredited by A2LA for technical competence in the field of electrical testing, and proved to be in compliance with ISO/IEC 17025: 2005 General Requirements for the Competence of Testing and Calibration Laboratories and any additional program requirements in the identified field of testing.

FCC Accredited Lab.

Designation Number: CN1194
Test Firm Registration Number: 259480

1.8 DEVIATION FROM STANDARDS

None.

1.9 ABNORMALITIES FROM STANDARD CONDITIONS

None.

1.10 OTHER INFORMATION REQUESTED BY THE CUSTOMER

None.

1.11 MEASUREMENT UNCERTAINTY

Where relevant, the following measurement uncertainty levels have been estimated for tests performed on the Product as specified in CISPR 16-4-2. This uncertainty represents an expanded uncertainty expressed at approximately the 95% confidence level using a coverage factor of k=2.

No.	Item	Measurement Uncertainty
1	Conducted emission 9KHz-150KHz	±3.8 dB
2	Conducted emission 150KHz-30MHz	±3.4 dB
3	Radiated emission 9KHz-30MHz	±4.9 dB
4	Radiated emission 30MHz-1GHz	±4.7 dB
5	Radiated emission 1GHz-18GHz	±5.1 dB
6	Radiated emission 18GHz-26GHz	±5.2 dB
7	Radiated emission 26GHz-40GHz	±5.2 dB

2. TEST SUMMARY

FCC 47 CFR Part 15 Subpart C Test Cases			
Test Item	Test Requirement	Test Method	Result
Antenna Requirement	FCC 47 CFR Part 15 Subpart C Section 15.203/15.247 (c)	N/A	PASS
AC Power Line Conducted Emission	FCC 47 CFR Part 15 Subpart C Section 15.207	ANSI C63.10-2013 Clause 6.2	PASS
Conducted Peak Output Power	FCC 47 CFR Part 15 Subpart C Section 15.247 (b)(3)	ANSI C63.10-2013 Clause 11.9.1.3	PASS
6dB Bandwidth	FCC 47 CFR Part 15 Subpart C Section 15.247 (a)(2)	ANSI C63.10-2013 Clause 11.8.1	PASS
Power Spectral Density	FCC 47 CFR Part 15 Subpart C Section 15.247 (e)	ANSI C63.10-2013 Clause 11.10.2	PASS
Conducted Out of Band Emission	FCC 47 CFR Part 15 Subpart C Section 15.247(d)	ANSI C63.10-2013 Clause 11.11	PASS
Radiated Spurious Emissions	FCC 47 CFR Part 15 Subpart C Section 15.205/15.209	ANSI C63.10-2013 Clause 11.11 & Clause 11.12	PASS
Band Edge Measurements (Radiated)	FCC 47 CFR Part 15 Subpart C Section 15.205/15.209	ANSI C63.10-2013 Clause 11.13	PASS

3. EQUIPMENT LIST

Radiated Emission Test Equipment List						
Used	Equipment	Manufacturer	Model No.	Serial Number	Cal. date (mm dd, yyyy)	Cal. Due date (mm dd, yyyy)
<input checked="" type="checkbox"/>	3M Chamber & Accessory Equipment	ETS-LINDGREN	3M	N/A	Dec. 20, 2015	Dec. 19, 2018
<input checked="" type="checkbox"/>	Receiver	R&S	ESIB26	100114	Dec. 10, 2017	Dec. 10, 2018
<input checked="" type="checkbox"/>	Loop Antenna	ETS-LINDGREN	6502	00202525	Dec. 22, 2017	Dec. 22, 2018
<input checked="" type="checkbox"/>	Broadband Antenna	ETS-LINDGREN	3142E	00201566	Dec. 17, 2017	Dec. 17, 2018
<input checked="" type="checkbox"/>	Preamplifier	HP	8447F	2805A02960	Dec. 10, 2017	Dec. 10, 2018
<input checked="" type="checkbox"/>	Horn Antenna (Pre-amplifier)	ETS-LINDGREN	3117-PA	00201874	May 22, 2018	May 22, 2019
<input checked="" type="checkbox"/>	Horn Antenna (Pre-amplifier)	ETS-LINDGREN	3116C-PA	00202652	Dec. 17, 2017	Dec. 17, 2018
<input checked="" type="checkbox"/>	Multi device Controller	ETS-LINDGREN	7006-001	00160105	N/A	N/A
<input checked="" type="checkbox"/>	Band Rejection Filter (2400MHz~2500MHz)	Micro-Tronics	BRM50702	G248	June 06, 2018	June 06, 2019
<input checked="" type="checkbox"/>	Test Software	Audix	e3	Software Version: 9.160323		

Conducted Emission Test Equipment List						
Used	Equipment	Manufacturer	Model No.	Serial Number	Cal. date (mm dd, yyyy)	Cal. Due date (mm dd, yyyy)
<input checked="" type="checkbox"/>	Receiver	R&S	ESR7	1316.3003K07-101181-K3	Dec. 10, 2017	Dec. 10, 2018
<input checked="" type="checkbox"/>	Pulse Limiter	R&S	ESH3-Z2	0357.8810.54	Dec. 10, 2017	Dec. 10, 2018
<input checked="" type="checkbox"/>	LISN	R&S	ESH2-Z5	860014/024	Dec. 10, 2017	Dec. 10, 2018
<input type="checkbox"/>	LISN	ETS-Lindgren	3816/2SH	00201088	Dec. 10, 2017	Dec. 10, 2018
<input checked="" type="checkbox"/>	Test Software	Audix	e3	Software Version: 9.160323		

Conducted RF test Equipment List						
Used	Equipment	Manufacturer	Model No.	Serial Number	Cal. date (mm dd, yyyy)	Cal. Due date (mm dd, yyyy)
<input checked="" type="checkbox"/>	EXA Spectrum Analyzer	KEYSIGHT	N9010A	MY51440197	Dec.10, 2017	Dec. 10, 2018
<input checked="" type="checkbox"/>	USB Wideband Power Sensor	KEYSIGHT	U2021XA	MY55430035	Dec. 10, 2017	Dec. 10, 2018
<input type="checkbox"/>	USB Wideband Power Sensor	KEYSIGHT	U2021XA	MY55430023	Dec. 10, 2017	Dec. 10, 2018

4. TEST CONFIGURATION

4.1 ENVIRONMENTAL CONDITIONS FOR TESTING

4.1.1 Normal or Extreme Test Conditions

Environment Parameter	Selected Values During Tests		
Test Condition	Ambient		
	Temperature (°C)	Voltage	Relative Humidity (%)
NT/NV	+15 to +35	120V~50 Hz/ 240V~60 Hz/ 3.8 V Battery	20 to 75
Remark:			
1) NV: Normal Voltage; NT: Normal Temperature			

4.2 TEST CHANNELS

Mode	Tx/Rx Frequency	Test RF Channel Lists		
		Lowest(L)	Middle(M)	Highest(H)
IEEE 802.11b	2412 MHz to 2462 MHz	Channel 1	Channel 7	Channel 11
		2412 MHz	2437 MHz	2462 MHz
IEEE 802.11g	2412 MHz to 2462 MHz	Channel 1	Channel 7	Channel 11
		2412 MHz	2437 MHz	2462 MHz
IEEE 802.11n-HT20	2412 MHz to 2462 MHz	Channel 1	Channel 7	Channel 11
		2412 MHz	2437 MHz	2462 MHz
IEEE 802.11n-HT40	2422 MHz to 2452 MHz	Channel 3	Channel 7	Channel 9
		2422 MHz	2437 MHz	2452 MHz

4.3 EUT TEST STATUS

Mode	Tx Function	Description
IEEE 802.11b IEEE 802.11g IEEE 802.11n-HT20 IEEE 802.11n-HT40	1Tx	1. Keep the EUT in continuously transmitting with modulation test single.

Power Setting	
	Channel 1 -11
IEEE 802.11b	19
IEEE 802.11g	13
IEEE 802.11n-HT20	12
IEEE 802.11n-HT40	12.5

Test Software
Test software name: Engineering Mode;

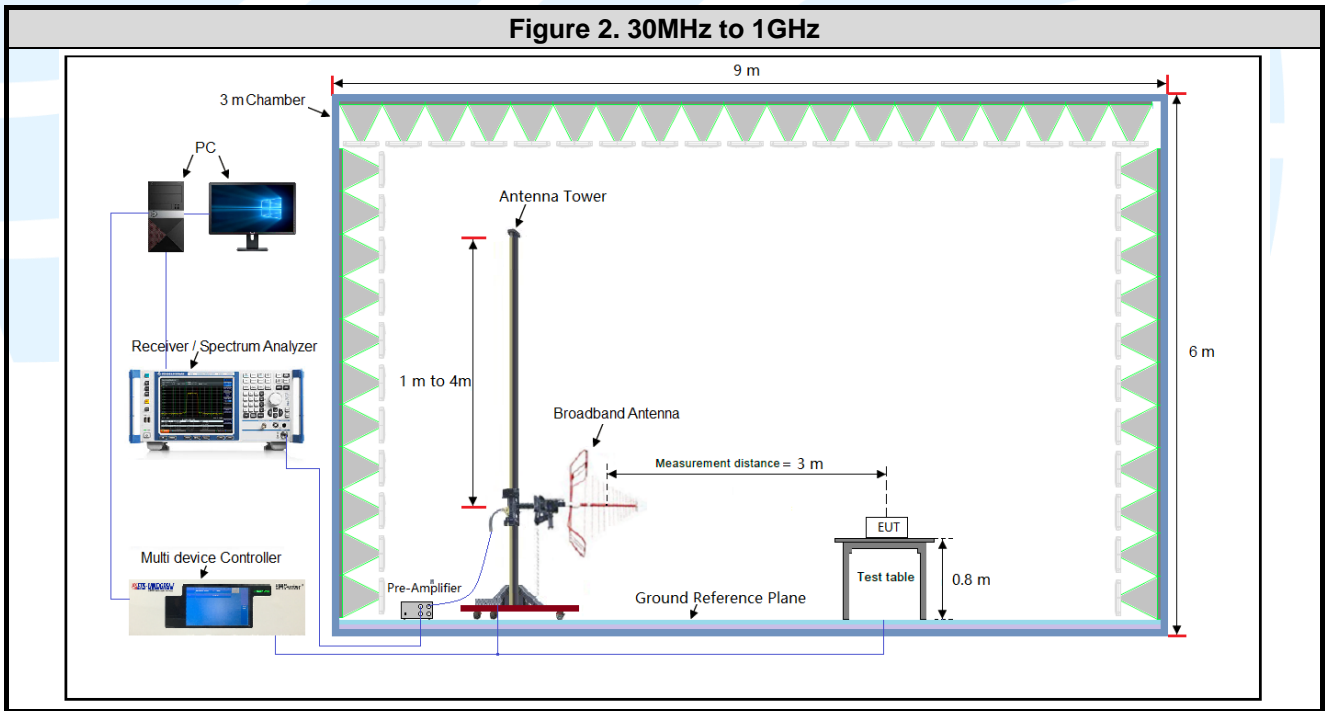
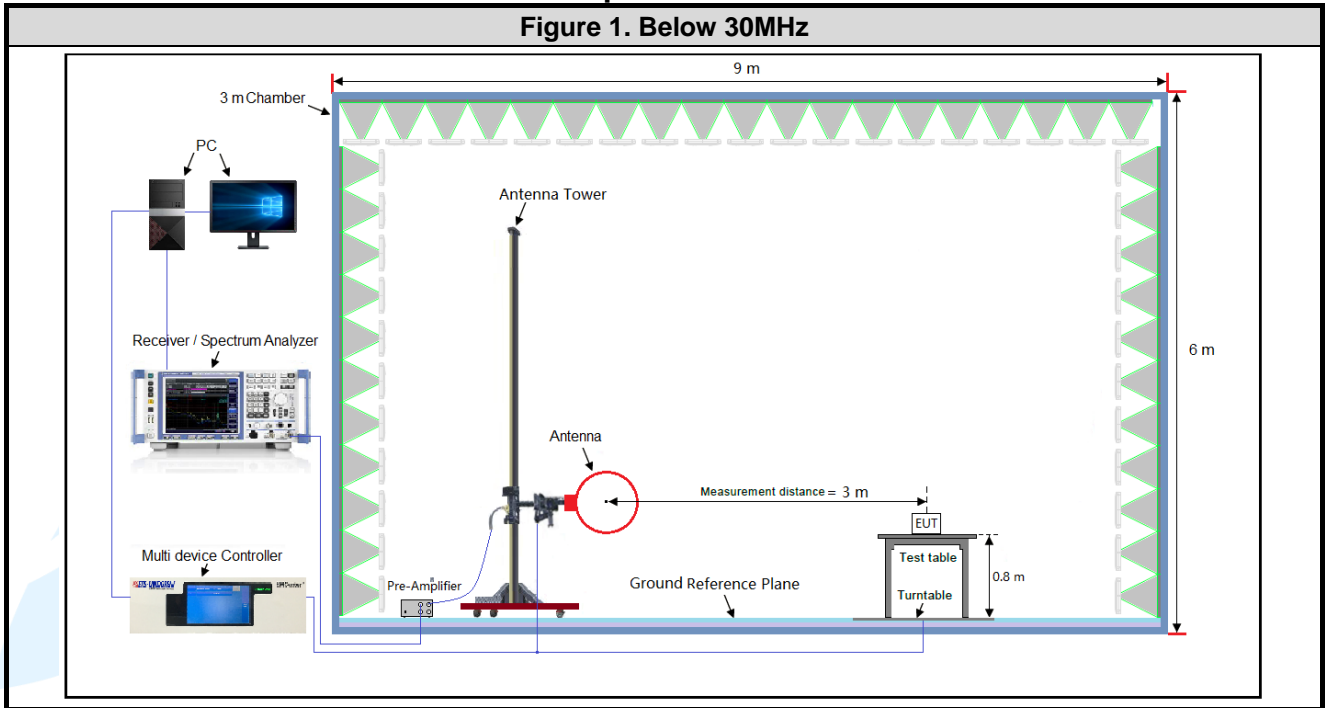
4.4 PRE-SCAN

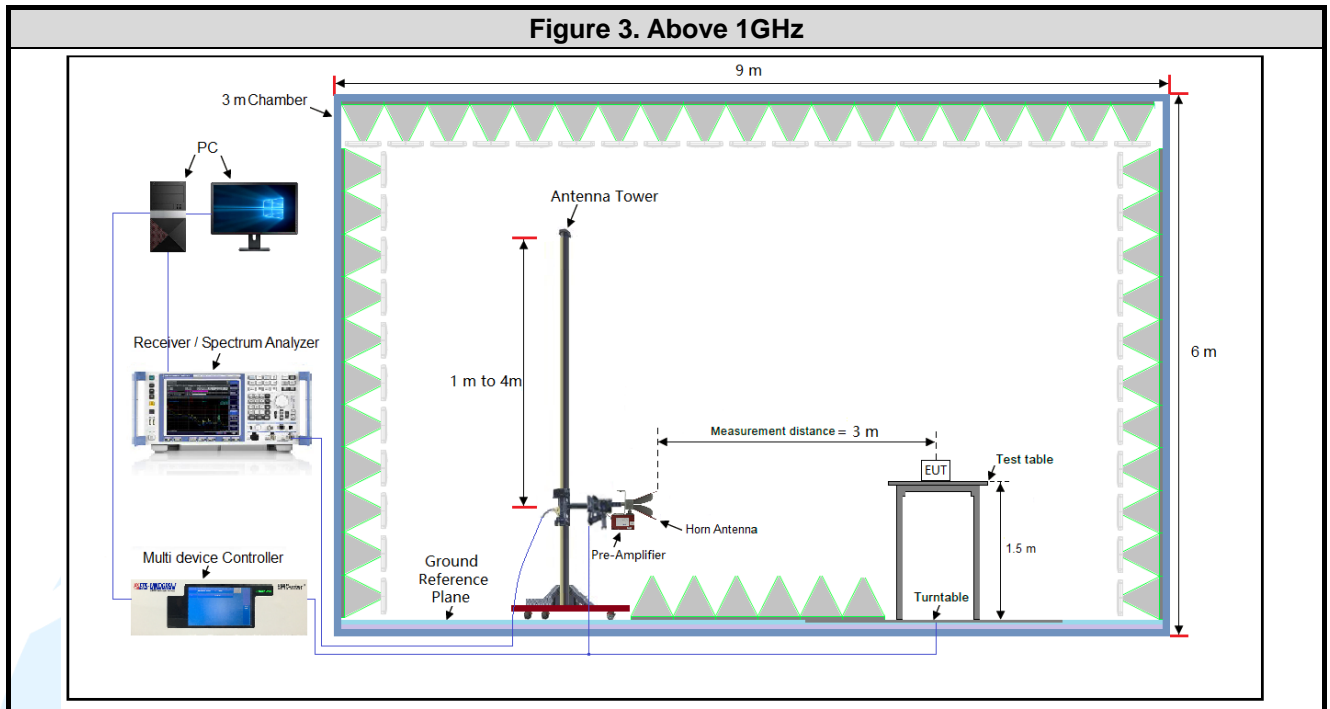
Pre-Scan has been conducted to determine the worst-case mode from all possible combinations between available modulations and data rates. Following rate(s) was (were) selected for the final test as listed below.

Mode	Worst-case data rates
IEEE 802.11b	1 Mbps
IEEE 802.11g	6 Mbps
IEEE 802.11n-HT20	MCS0
IEEE 802.11n-HT40	MCS0

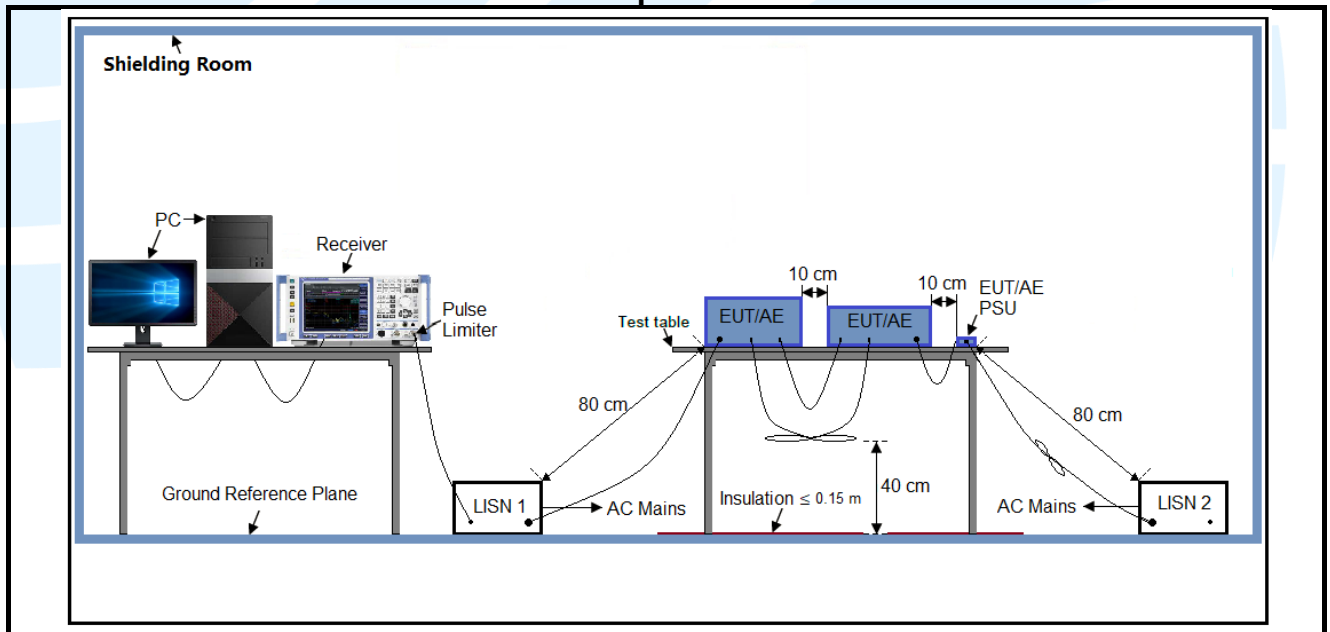
4.5 TEST SETUP

4.5.1 For Radiated Emissions test setup

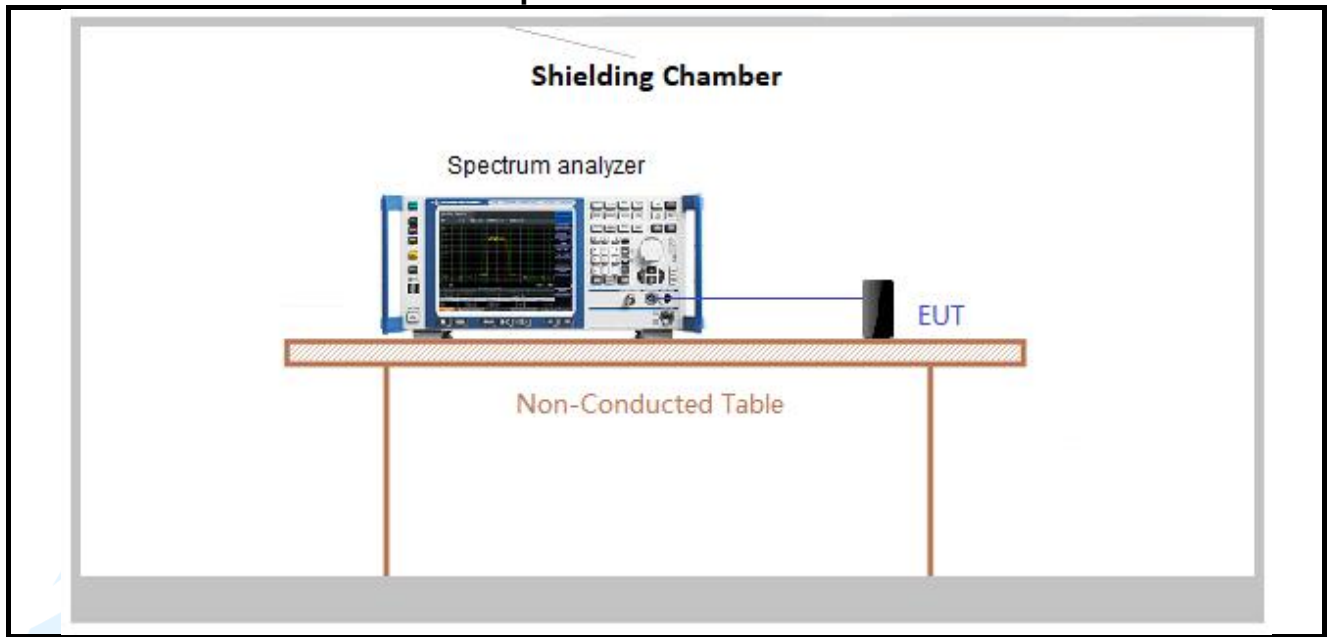




4.5.2 For Conducted Emissions test setup



4.5.3 For Conducted RF test setup



4.6 SYSTEM TEST CONFIGURATION

For emissions testing, the equipment under test (EUT) setup to transmit continuously to simplify the measurement methodology. Care was taken to ensure proper power supply voltages during testing. During testing, radiated emission were performed with the EUT set to transmit at the channel with highest output power as worst-case scenario. It was powered by a 3.8Vdc rechargeable Li-on battery. Only the worst case data were recorded in this test report.

The signal is maximized through rotation and placement in the three orthogonal axes. The antenna height and polarization are varied during the search for maximum signal level. The antenna height is varied from 1 to 4 meters. Radiated emissions are taken at three meters unless the signal level is too low for measurement at that distance. If necessary, a pre-amplifier is used and/or the test is conducted at a closer distance. Therefore, all final radiated testing was performed with the EUT in (see table below) orientation.

Frequency	Mode	Antenna Port	Worst-case axis positioning
Above 1GHz	1TX	Chain 0	Y axis

All readings are extrapolated back to the equivalent three meter reading using inverse scaling with distance. Analyzer resolution is 100 kHz or greater for frequencies below 1000 MHz. The resolution is 1 MHz or greater for frequencies above 1000 MHz. The spurious emissions more than 20 dB below the permissible value are not reported.

Radiated emission measurement were performed from the lowest radio frequency signal generated in the device which is greater than 9 kHz to the tenth harmonic of the highest fundamental frequency or to 40 GHz, whichever is lower.

4.7 DUTY CYCLE

Test Procedure: ANSI C63.10-2013 Clause 11.6.

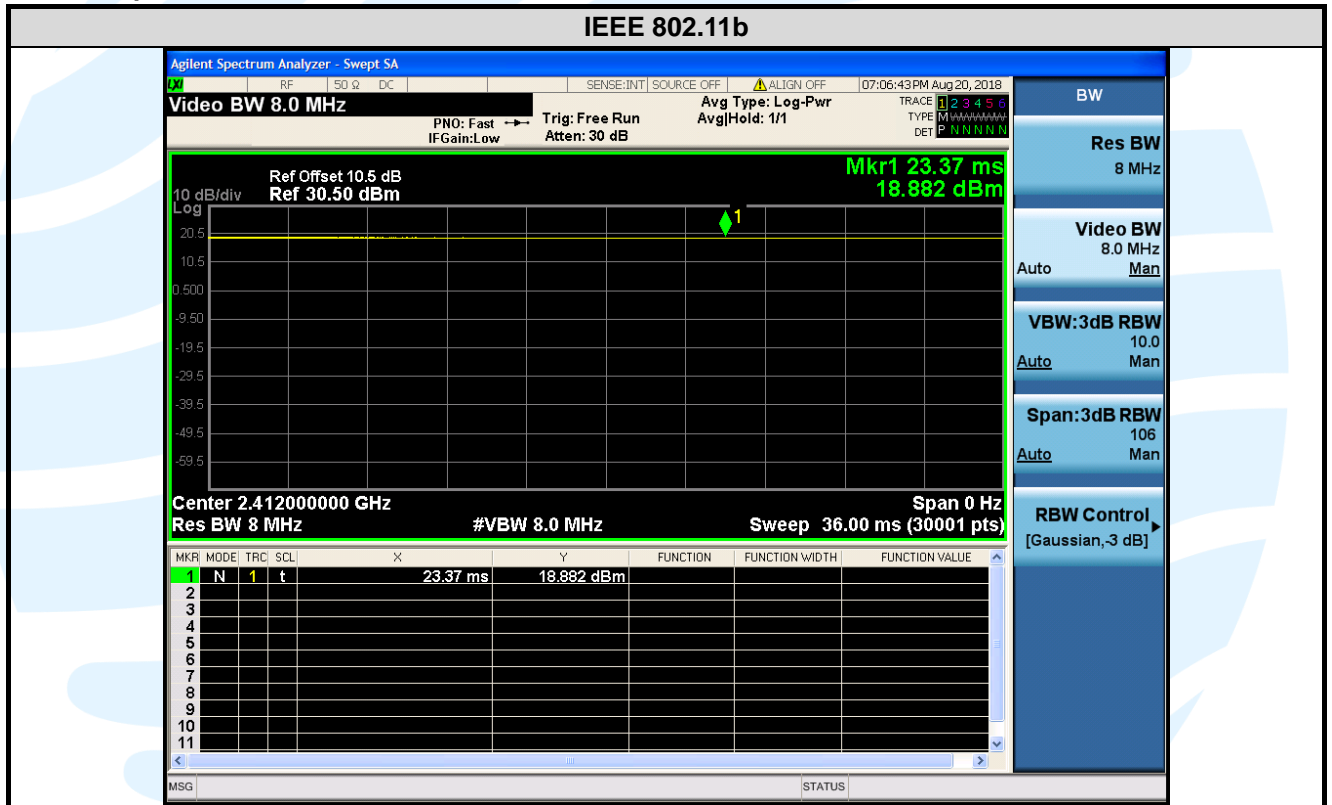
Test Results

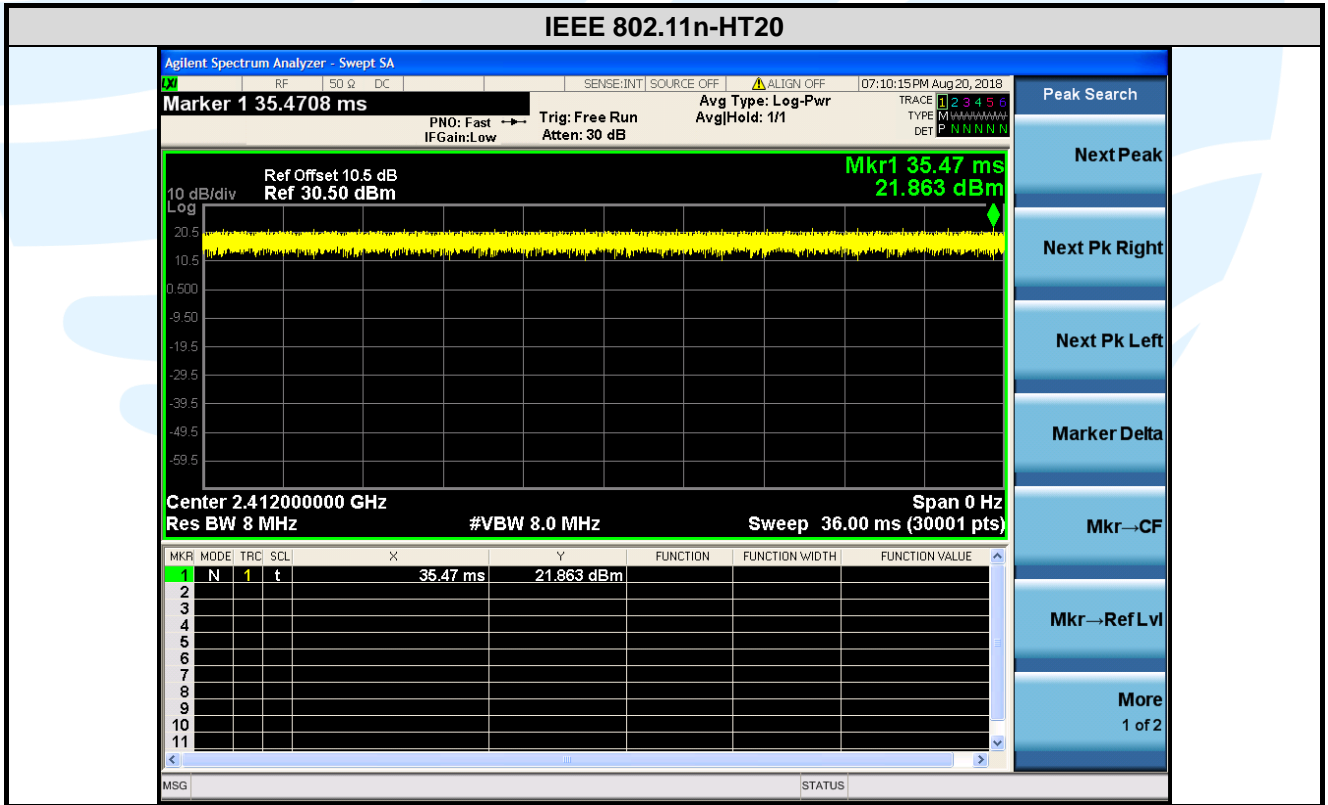
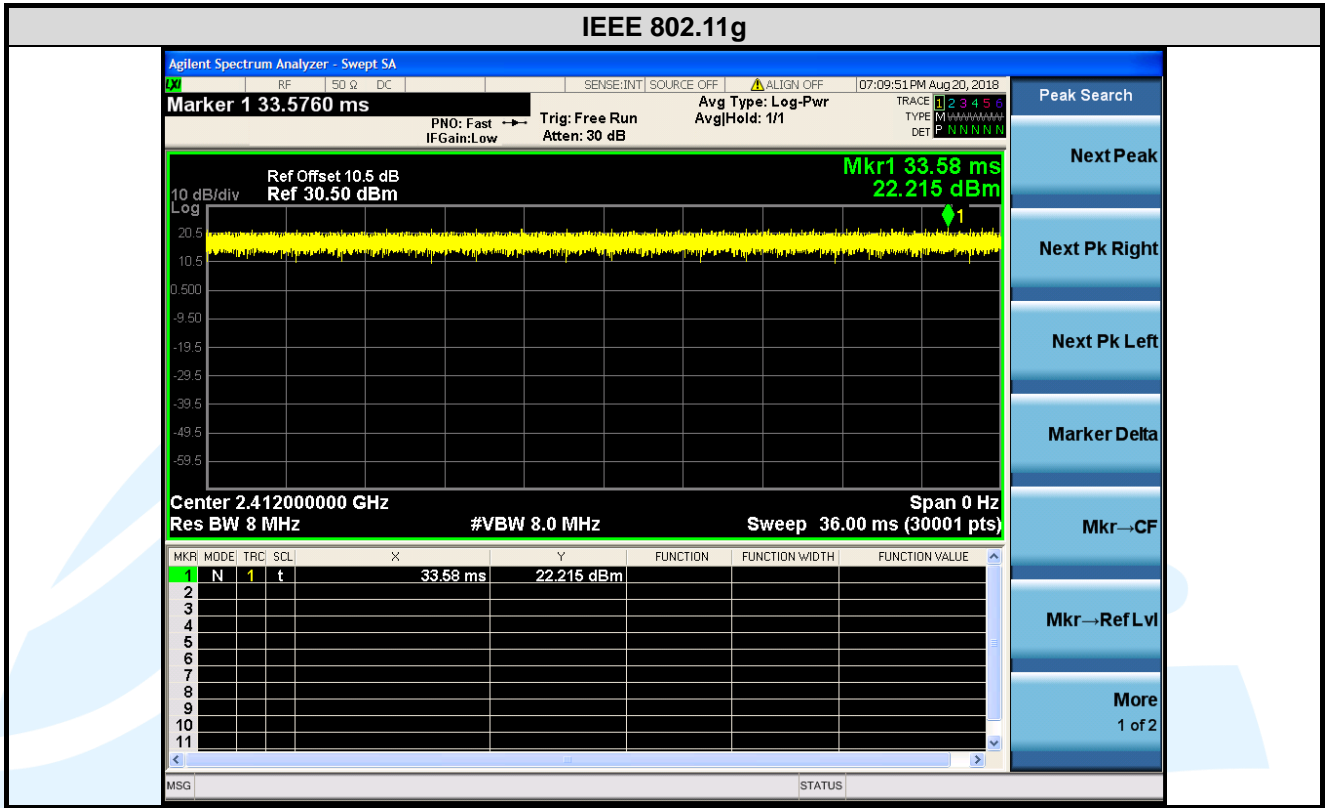
Mode	Data rates (Mbps)	On Time (msec)	Period (msec)	Duty Cycle (linear)	Duty Cycle (%)	Duty Cycle Factor (dB)	1/ T Minimum VBW (kHz)	Average Factor (dB)
IEEE 802.11b	1	1	1	1.00	100.00	0.00	0.01	0.00
IEEE 802.11g	6	1	1	1.00	100.00	0.00	0.01	0.00
IEEE 802.11n-HT20	MCS0	1	1	1.00	100.00	0.00	0.01	0.00
IEEE 802.11n-HT40	MCS0	1	1	1.00	100.00	0.00	0.01	0.00

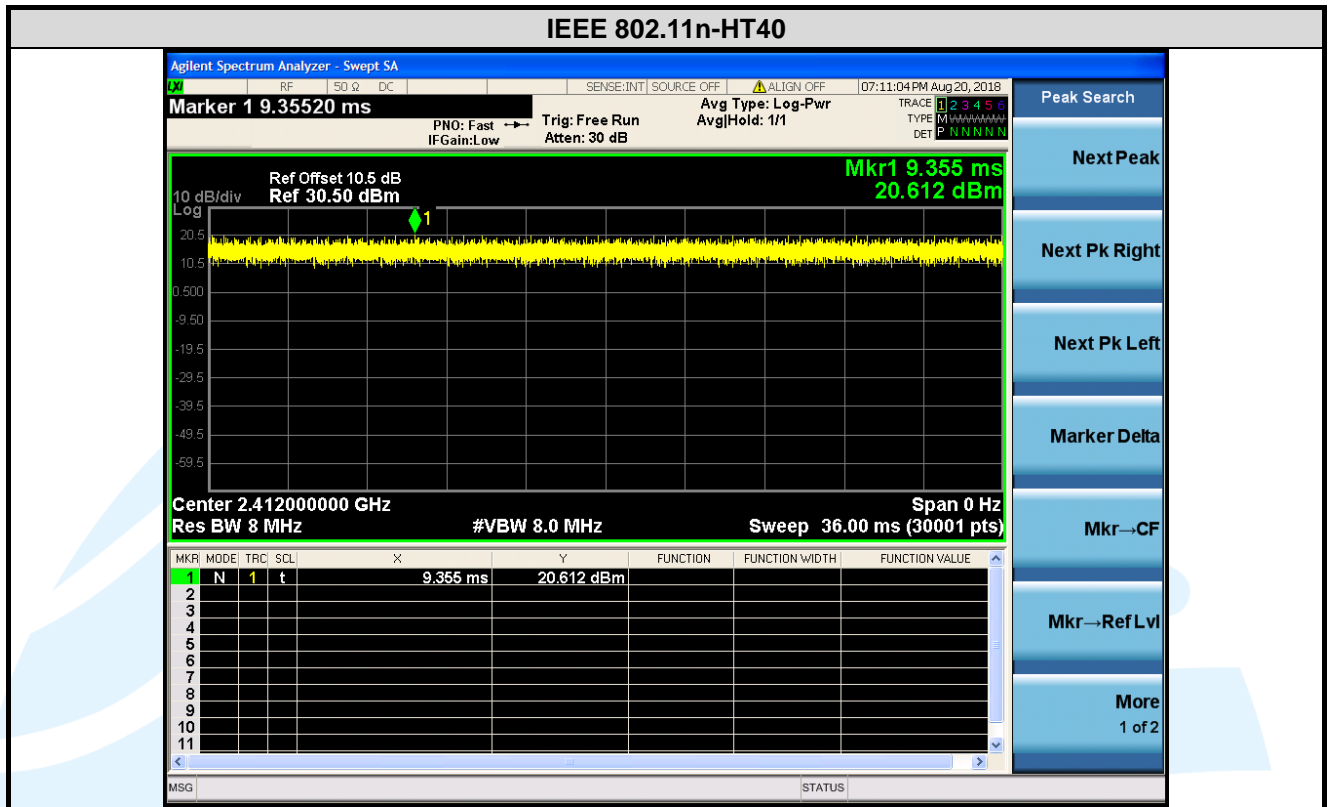
Remark:

- 1) Duty cycle= On Time/ Period;
- 2) Duty Cycle factor = 10 * log(1/ Duty cycle);
- 3) Average factor = 20 log₁₀ Duty Cycle.

The test plots as follows







5. RADIO TECHNICAL REQUIREMENTS SPECIFICATION

5.1 REFERENCE DOCUMENTS FOR TESTING

No.	Identity	Document Title
1	FCC 47 CFR Part 2	Frequency allocations and radio treaty matters; general rules and regulations
2	FCC 47 CFR Part 15	Radio Frequency Devices
3	ANSI C63.10-2013	American National Standard for Testing Unlicensed Wireless Devices
4	KDB 558074 D01 15.247 Meas Guidance v05	Guidance for compliance measurements on Digital Transmission Systems, Frequency Hopping Spread Spectrum system, and Hybrid system devices operating under Section 15.247 of the FCC rules

5.2 ANTENNA REQUIREMENT

Standard Requirement
<p>15.203 requirement: An intentional radiator shall be designed to ensure that no antenna other than that furnished by the responsible party shall be used with the device. The use of a permanently attached antenna or of an antenna that uses a unique coupling to the intentional radiator, the manufacturer may design the unit so that a broken antenna can be replaced by the user, but the use of a standard antenna jack or electrical connector is prohibited.</p>
<p>15.247(b) (4) requirement: The conducted output power limit specified in paragraph (b) of this section is based on the use of antennas with directional gains that do not exceed 6 dBi. Except as shown in paragraph (c) of this section, if transmitting antennas of directional gain greater than 6 dBi are used, the conducted output power from the intentional radiator shall be reduced below the stated values in paragraphs (b)(1), (b)(2), and (b)(3) of this section, as appropriate, by the amount in dB that the directional gain of the antenna exceeds 6 dBi.</p>
<p>EUT Antenna: Antenna in the interior of the equipment and no consideration of replacement. The gain of the antenna is 1.67 dBi.</p>

5.3 CONDUCTED PEAK OUTPUT POWER

Test Requirement: FCC 47 CFR Part 15 Subpart C Section 15.247 (b)(3)

Test Method: ANSI C63.10-2013 Clause 11.9.1.3

Limit: For systems using digital modulation in the 2400-2483.5 MHz bands: 1 Watt.

Test Procedure:

1. Remove the antenna from the EUT and then connect a low loss RF cable from the antenna port to the power meter.
2. Measure out each test modes' peak or average output power, record the power level.

Note: The cable loss and attenuator loss were offset into measure device as an amplitude offset.

Test Setup: Refer to section 4.5.3 for details.

Instruments Used: Refer to section 3 for details

Test Results:

Mode	Channel/ Frequency (MHz)	Maximum Conducted Peak Power (dBm)	Limit (dBm)	Pass / Fail
IEEE 802.11b	1(2412)	17.69	30	Pass
	6(2437)	13.46	30	Pass
	11(2462)	16.26	30	Pass
IEEE 802.11g	1(2412)	18.25	30	Pass
	6(2437)	15.71	30	Pass
	11(2462)	19.27	30	Pass
IEEE 802.11n-HT20	1(2412)	17.83	30	Pass
	6(2437)	14.48	30	Pass
	11(2462)	18.15	30	Pass
IEEE 802.11n-HT40	3(2422)	18.46	30	Pass
	6(2437)	17.73	30	Pass
	9(2452)	18.95	30	Pass

Note: The antenna gain of 1.67 dBi less than 6dBi maximum permission antenna gain value based on 1 watt (30dBm) peak output power limit.

5.46 DB BANDWIDTH

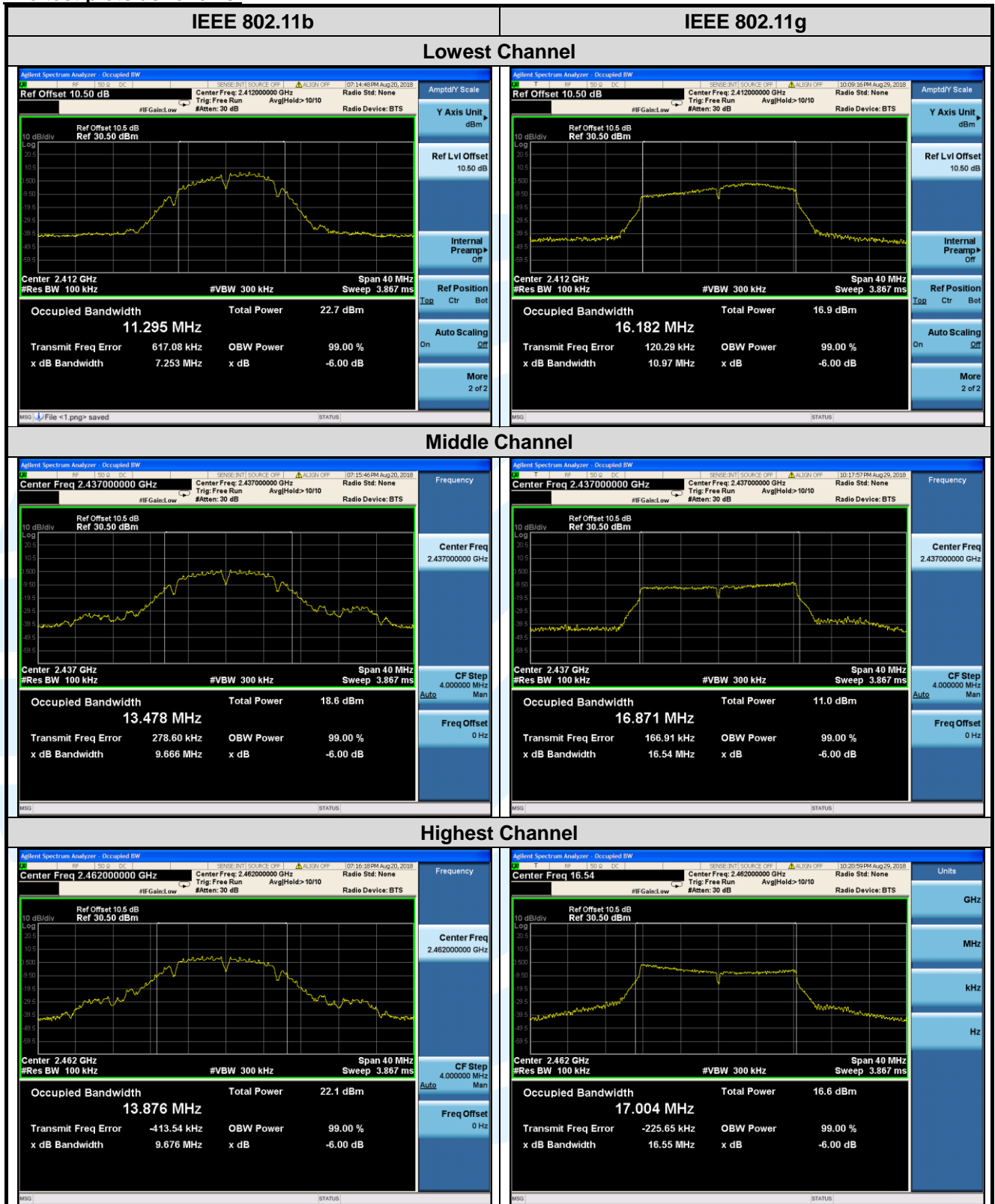
Test Requirement: FCC 47 CFR Part 15 Subpart C Section 15.247 (a)(2)
Test Method: ANSI C63.10-2013 Clause 11.8.1
Limit: For direct sequence systems, the minimum 6dB bandwidth shall be at least 500kHz
Test Procedure: Remove the antenna from the EUT and then connect a low loss RF cable from the antenna port to the spectrum analyzer.
 Use the following spectrum analyzer settings:
 a) Set RBW = 100 kHz.
 b) Set the video bandwidth (VBW) ≥ 3 x RBW.
 c) Detector = Peak.
 d) Trace mode = max hold.
 e) Sweep = auto couple.
 f) Allow the trace to stabilize.
 g) Measure the maximum width of the emission that is constrained by the frequencies associated with the two outermost amplitude points (upper and lower frequencies) that are attenuated by 6 dB relative to the maximum level measured in the fundamental emission.

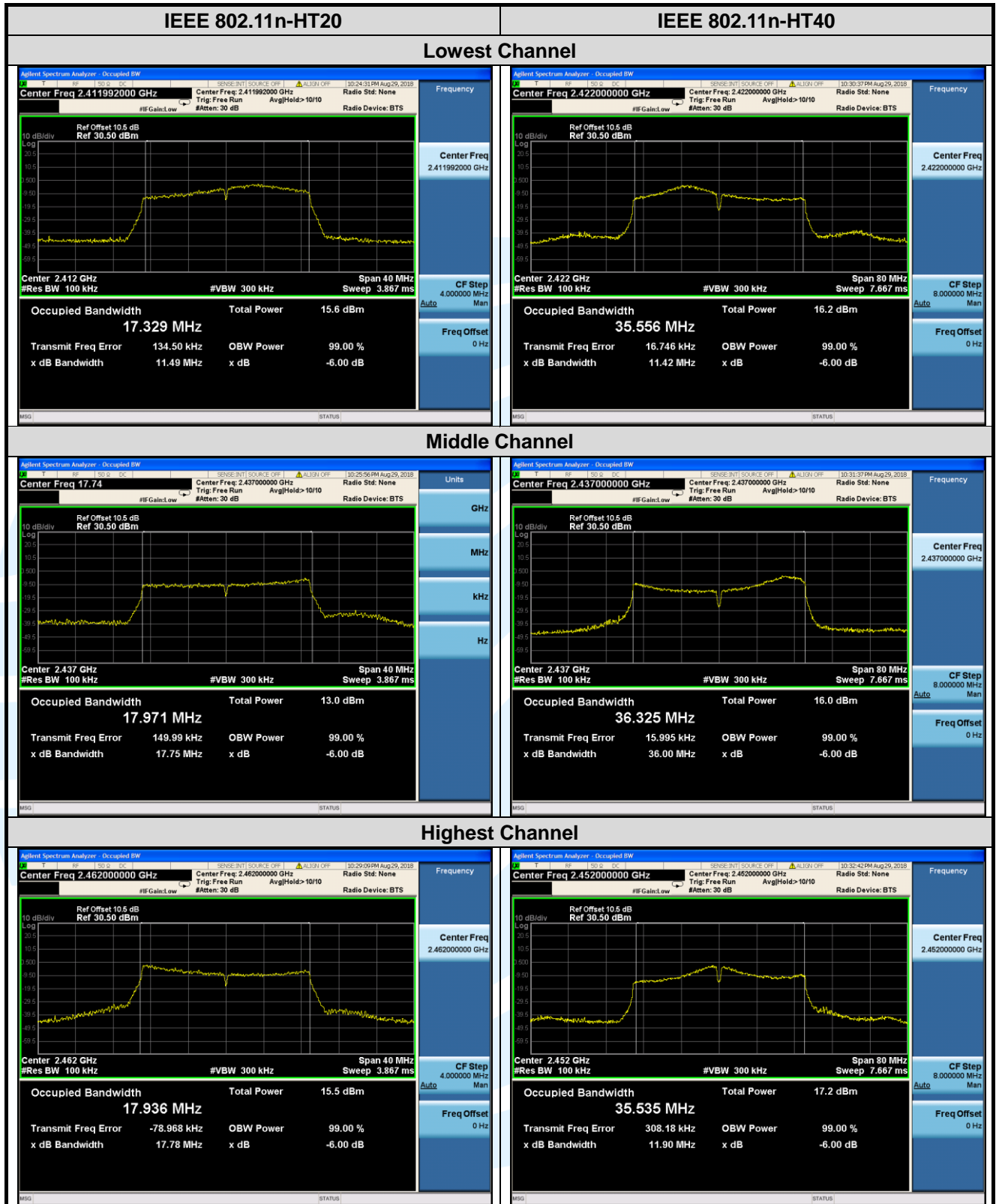
Note: The cable loss and attenuator loss were offset into measure device as an amplitude offset.

Test Setup: Refer to section 4.5.3 for details.
Instruments Used: Refer to section 3 for details
Test Results:

Mode	Channel/ Frequency (MHz)	6 dB Bandwidth (MHz)	99% Bandwidth (MHz)	6 dB Bandwidth Limit	Pass / Fail
IEEE 802.11b	1(2412)	7.253	11.295	> 500 kHz	Pass
	6(2437)	9.666	13.478	> 500 kHz	Pass
	11(2462)	9.676	13.876	> 500 kHz	Pass
IEEE 802.11g	1(2412)	10.97	16.182	> 500 kHz	Pass
	6(2437)	16.54	16.871	> 500 kHz	Pass
	11(2462)	16.55	17.004	> 500 kHz	Pass
IEEE 802.11n-HT20	1(2412)	11.49	17.329	> 500 kHz	Pass
	6(2437)	17.75	17.971	> 500 kHz	Pass
	11(2462)	17.78	17.936	> 500 kHz	Pass
IEEE 802.11n-HT40	3(2422)	11.42	35.556	> 500 kHz	Pass
	6(2437)	36.00	36.325	> 500 kHz	Pass
	9(2452)	11.90	35.535	> 500 kHz	Pass

The test plots as follows:





5.5 POWER SPECTRAL DENSITY

Test Requirement: FCC 47 CFR Part 15 Subpart C Section 15.247 (e)
Test Method: ANSI C63.10-2013 Clause 11.10.2
Limit: For digitally modulated systems, the power spectral density conducted from the intentional radiator to the antenna shall not be greater than 8dBm in any 3kHz band during any time interval of continuous transmission.

Test Procedure: Remove the antenna from the EUT and then connect a low loss RF cable from the antenna port to the spectrum analyzer.
 Use the following spectrum analyzer settings:
 a) Set analyzer center frequency to DTS channel center frequency.
 b) Set the span to 1.5 times the DTS bandwidth.
 c) Set the RBW to: $3 \text{ kHz} \leq \text{RBW} \leq 100 \text{ kHz}$.
 d) Set the VBW $\geq 3 \times \text{RBW}$.
 e) Detector = peak.
 f) Sweep time = auto couple.
 g) Trace mode = max hold.
 h) Allow trace to fully stabilize.
 i) Use the peak marker function to determine the maximum amplitude level within the RBW.
 j) If measured value exceeds limit, reduce RBW (no less than 3 kHz) and repeat.

Note: The cable loss and attenuator loss were offset into measure device as an amplitude offset.

Test Setup: Refer to section 4.5.3 for details.

Instruments Used: Refer to section 3 for details

Test Results:

Mode	Channel/ Frequency (MHz)	PSD (dBm/3kHz)	PSD Limit (dBm/3kHz)	Pass / Fail
IEEE 802.11b	1(2412)	-11.585	8	Pass
	6(2437)	-17.915	8	Pass
	11(2462)	-13.738	8	Pass
IEEE 802.11g	1(2412)	-15.221	8	Pass
	6(2437)	-19.106	8	Pass
	11(2462)	-14.947	8	Pass
IEEE 802.11n-HT20	1(2412)	-16.234	8	Pass
	6(2437)	-17.885	8	Pass
	11(2462)	-14.091	8	Pass
IEEE 802.11n-HT40	3(2422)	-15.761	8	Pass
	6(2437)	-16.486	8	Pass
	9(2452)	-15.582	8	Pass

The test plots as follows:

