

# VIVO XL4 User Guide

# Contents

1. For your safety .....	1
2. Learn about the phone .....	2
● Overview .....	2
● Function Keys .....	2
3. Before using .....	3
● Insert SIM cards and TF card.....	3
● Charge the Battery .....	5
4. Getting started.....	5
● Basic Function .....	5
● Home screen.....	5
● Touch screen .....	7
5. Communication .....	8
● Make a call .....	8
● Ongoing call.....	8
● Incoming call .....	9
● Send a Message .....	9
6. Multimedia.....	10
● Camera .....	10
● Music .....	11
7. Connection.....	12
● Airplane mode .....	12
● WLAN.....	12
● Bluetooth.....	13
● USB.....	13
8. Features .....	14
● Front Camera Portrait.....	14
● Group Selfie.....	14
● Portrait Effect .....	14
● Face ID.....	15
● Power Manager.....	15
● Fingerprint Security .....	16
● Split Screen.....	16
● New Navigation Mode .....	16
● Notch Screen Gesture .....	16
9. Operation .....	16
● Smart Gestures .....	16
● Suspend option .....	18
10. Warnings and notes .....	18

# 1. For your safety

Please read this manual before using the cell phone to ensure your safety and proper use.



## SWITCH OFF IN HOSPITALS

Please abide by relevant provisions or regulations. Please turn off your mobile phone near medical equipment.



## SWITCH OFF WHEN REFUELING

Don't use the phone at a refueling point. Don't use near fuel or chemicals.



## MICRO SIM CARDS AND SD CARD ARE PORTABLE

Keep your phone, phone parts and accessories out of children's reach.



## BATTERY

Please do not destroy or damage the battery, it can be dangerous and cause fire. Please do not throw battery in fire to avoid hazard. When battery cannot be used, please dispose in safe environment. Do not try to dismantle the battery. If the battery or authorized charger is broken or old, please stop using them, and replace with certified genuine battery.

For first time using, please discharge completely and charge the battery in 100% full and continue charging one more hour with authorized charger.



## USE QUALITY EQUIPMENT

Use authorized equipment to avoid danger.



## ROAD SAFETY COMES FIRST

Give full attention while driving, Park before using your phone. Please follow traffic rules of local city town.



## INTERFERENCE

All wireless devices may be susceptible to cause interference, which could affect performance.

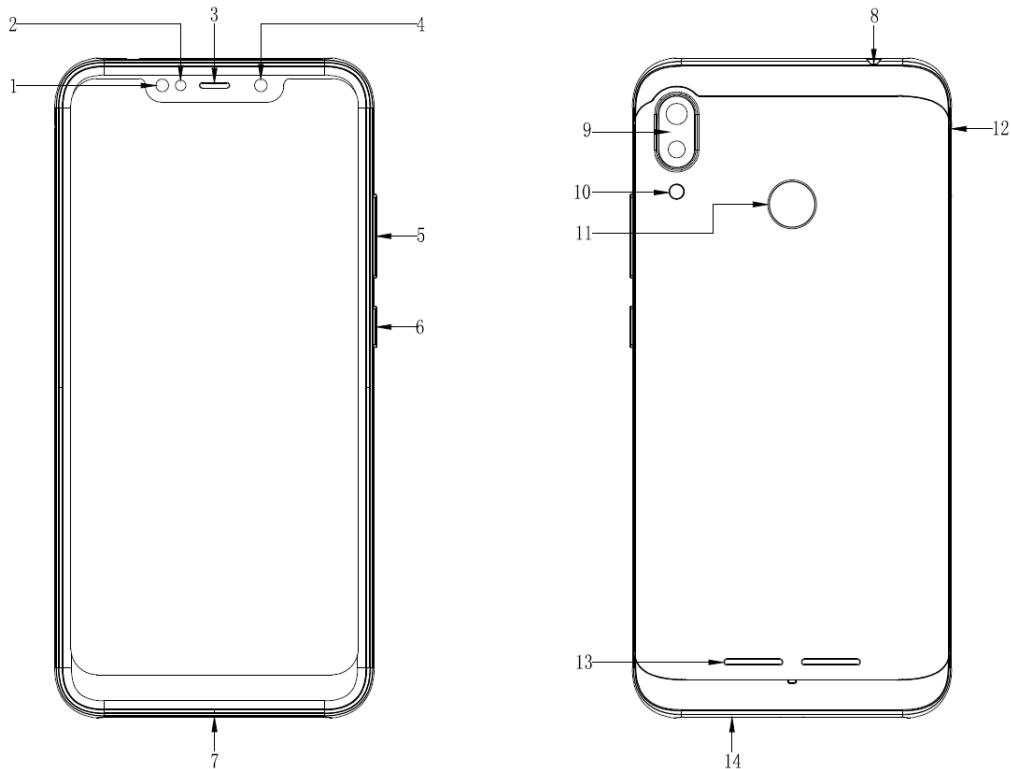


## SWITCH OFF IN AIRCRAFT

Wireless devices can cause interference in aircraft. It's not only dangerous but also illegal to use mobile phone in an aircraft.

## 2. Learn about the phone

### Overview



- 1 Front Flash
- 2 Light Sensor
- 3 Receiver
- 4 Front Camera
- 5 Volume key
- 6 Screen Lock / Power Key
- 7 USB Port

- 8 Headset Jack
- 9 Rear Camera
- 10 Rear Flash
- 11 Fingerprint Sensor
- 12 Card Tray
- 13 Speaker
- 14 Microphone

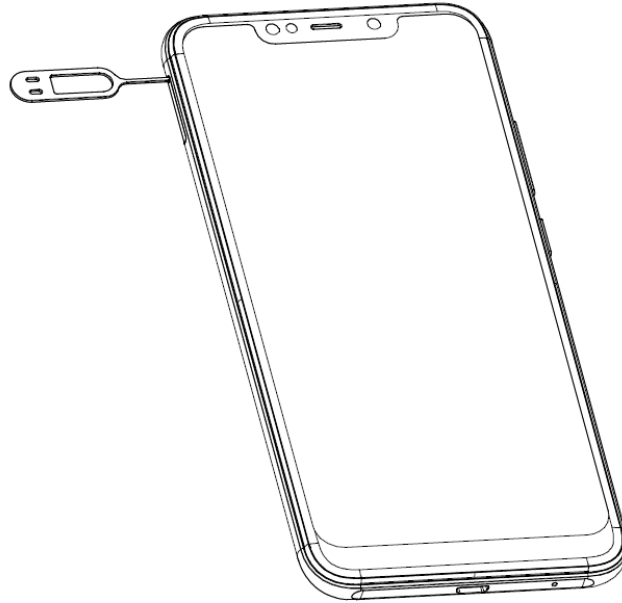
### Function Keys

Keys	Functions
<b>Screen Lock / Power Key</b>	<ul style="list-style-type: none"> <li>• Press to turn on/off the screen.</li> <li>• Press and hold to reboot, power off the phone, and turn on airplane mode or silent.</li> </ul>
<b>Volume Key</b>	<ul style="list-style-type: none"> <li>• Press to adjust the volume of device.</li> </ul>
<b>Multi Task Key (on the screen)</b>	<ul style="list-style-type: none"> <li>• Tap to open the list of recently used apps.</li> <li>• Click the circle button to clean all of recently used apps.</li> </ul>
<b>Home Key (on the screen)</b>	<ul style="list-style-type: none"> <li>• Tap to return to Home screen.</li> <li>• Long press to access Google™ search.</li> </ul>
<b>Back Key (on the screen)</b>	<ul style="list-style-type: none"> <li>• Tap to return to the previous screen.</li> </ul>

### 3. Before using

#### Insert SIM cards and TF card

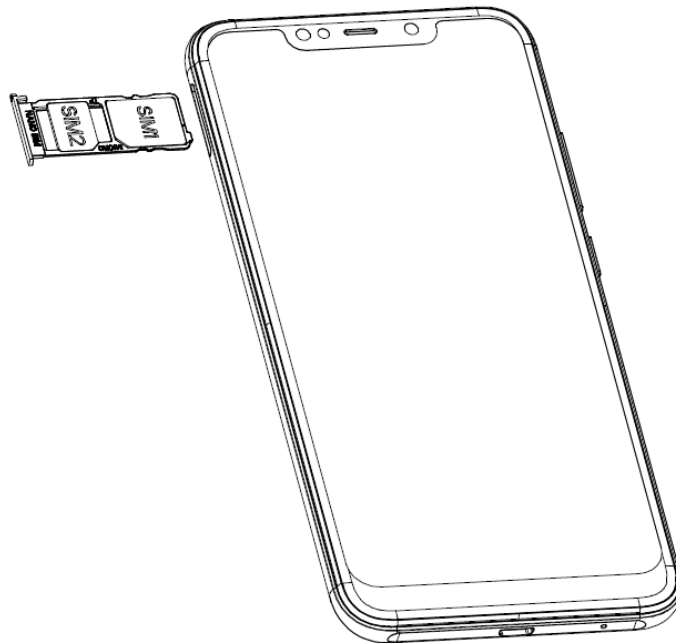
- 1) Stick into the pin hole with eject tool, and then card tray will be out of phone.

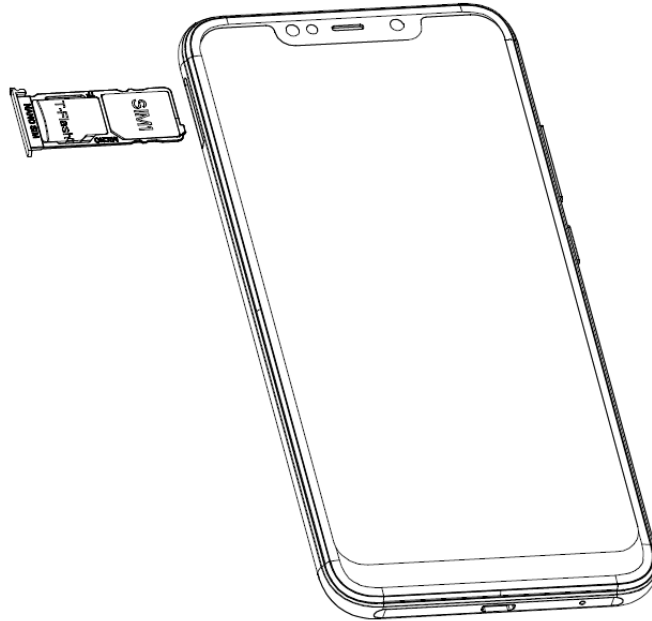


- 2) Put SIM cards and TF card to card tray correctly.

**Card 1** supports Micro SIM card.

**Card 2** supports Nano SIM card and TF card.





- ✓ **Note:** SD card can be used as internal storage.  
Option 1: Notification Center --> Tap the notice to set up --> Use as internal storage --> Next --> Erase & Format  
Option 2: Settings --> More settings-->Storage & USB --> Format as internal storage--> Erase & Format

3) Push the card tray into the phone.

✓ **Note:**

- SIM cards and TF card support hot plugging.
- Do not remove the cards while the device is transferring data. Doing so may cause data to be lost or damage to the cards and device.
- The SIM cards and TF card are small parts. Please keep away from Children to avoid swallowing the card by accident.
- Please do not touch the metal surface of SIM and TF cards and keep them away from electromagnetic field to avoid damaged data.

 **Charge the Battery**

Charge the battery before using it.

Connect the USB cable to the USB power adaptor, and then plug the end of the USB cable into the USB Port.

✓ **Note:**

The battery of mobile phone is fixed. It cannot remove.

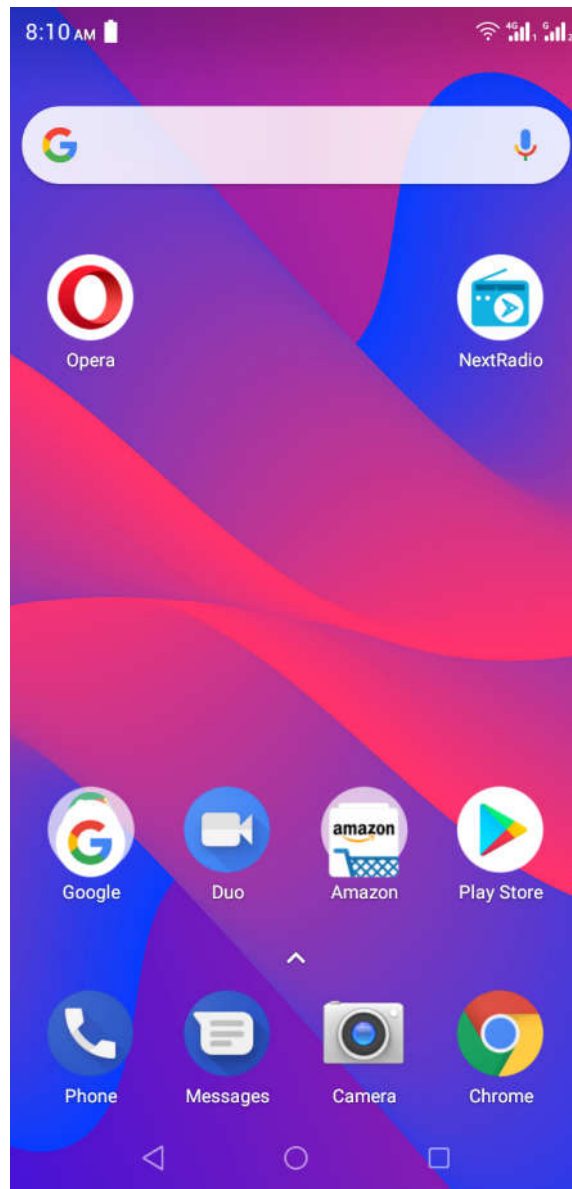
## 4. Getting started

 **Basic Function**

- Turn on the phone  
Press and hold the power key for a while to turn on the phone.
- Turn off the phone  
Long press the power key until a menu shows. Choose “Power off” to turn off the phone.
- Restart the phone  
Option 1: Long press the power key until a menu shows. Choose “Reboot” to restart the phone.  
Option 2: Long press the power key till 11s above to auto restart the phone.
- Lock the screen  
Option 1: Press the power key to turn off the screen and lock it  
Option 2: Long press on an empty spot to open the Desktop Settings, Choose “Quick lock screen” to turn on the function, double tap the screen to lock it.  
Option 3: The screen will auto lock if you don't use the phone for a while.
- Unlock the screen  
Press the power key, and then slide to top for unlocking.

 **Home screen**

The Home screen is your starting point to access all the features on your phone. It displays application icons, widgets, and other features. You can customize the Home screen with different wallpaper and display the items you want.



- Status Bar  
At the top of the screen, it displays the time, signal, battery information, and icons.
- Notification Center  
Swipe down from the top edge to see more details of the new notification, such as messaging, missed call, Wi-Fi network available etc. Tap the notification and drag to left or right to delete it.  
**Settings-->Notification-->Notification Center** to manage it.
- Control Center  
Slide down from the top edge to open the control center.  
In the control center, it's a quick access to Mobile data, Wi-Fi, Bluetooth, Flashlight, Sound and Vibrate.

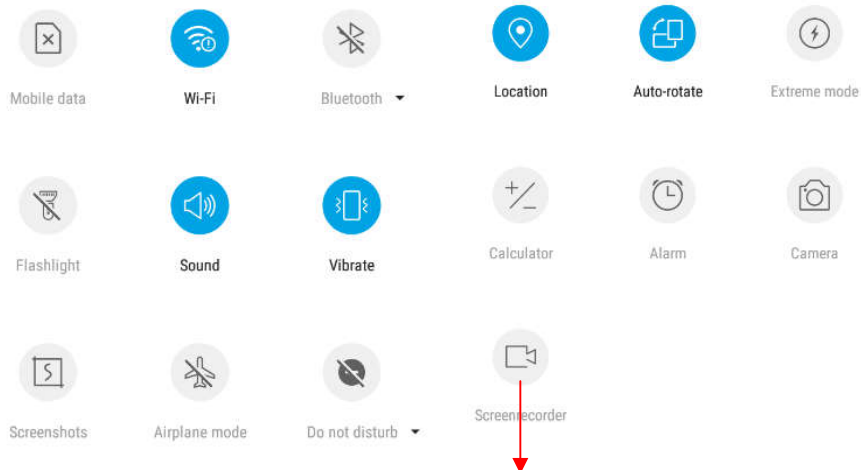




Thu, Jun 28



Tap to see more functions



**Screen Recorder:**

Tap to record your operating process, and the videos can be save and share to others.

- Launcher Menu  
Long press on an empty spot to open the launcher menu. You can change the Wallpaper, Edit Desktop. It's a quick access to Desktop Settings, Arrange and Search.
- Move an application  
Touch & hold the icon you want to move. Drag the icon to move or cross at the edge of the screen to move into another screen.
- Uninstall an application  
Touch & Drag the icon you want to uninstall to the top. Long press the icon to appear the hover box, display the application information, click the application information to enter the application information, Tap "Uninstall" to uninstall.
- Creating a folder  
Drag an icon on the top of another one to create a folder. Open the folder and then tap the "Folder" to rename it.

 **Touch screen**

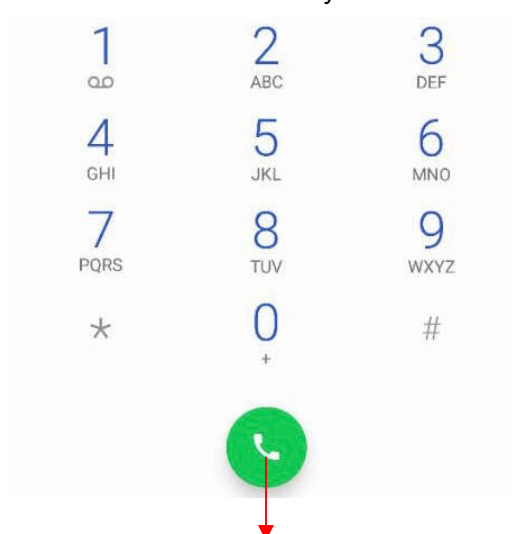
The way to control mobile phone is using your finger on touch icons, buttons, menu items, the onscreen keyboard, and other items on the touch screen.

- **Touch:** To act on items on the screen, such as application and settings icons, to type letters and symbols using the onscreen keyboard, or to press onscreen buttons, you simply touch them with your finger.
- **Touch & hold:** Touch & hold an item on the screen by touching it and not lifting your finger until an action occurs.
- **Drag:** Touch & hold an item for a moment and then, without lifting your finger, move your finger on the screen until you reach the target position. You can drag items on the Home screen to reposition them and you can drag to open the Notification Center.
- **Swipe or slide:** To swipe or slide, quickly move your finger across the surface of the screen, without pausing when you first touch (so you don't drag an item instead). For example, you slide the screen up or down to scroll a list, and in the same way Calendar views you can swipe quickly across the screen to change the range of time visible.
- **Pinch:** In some applications (Such as Maps and photos) you can zoom in and out by placing finger and thumb on the screen at same time and pinching them out together (to zoom out) or spreading them apart (to zoom in).
- **Rotate the screen:** On most screens, the orientation of the screen rotates with the phone as you turn it from upright to its side and back again. You can turn this feature on and off.

## 5. Communication

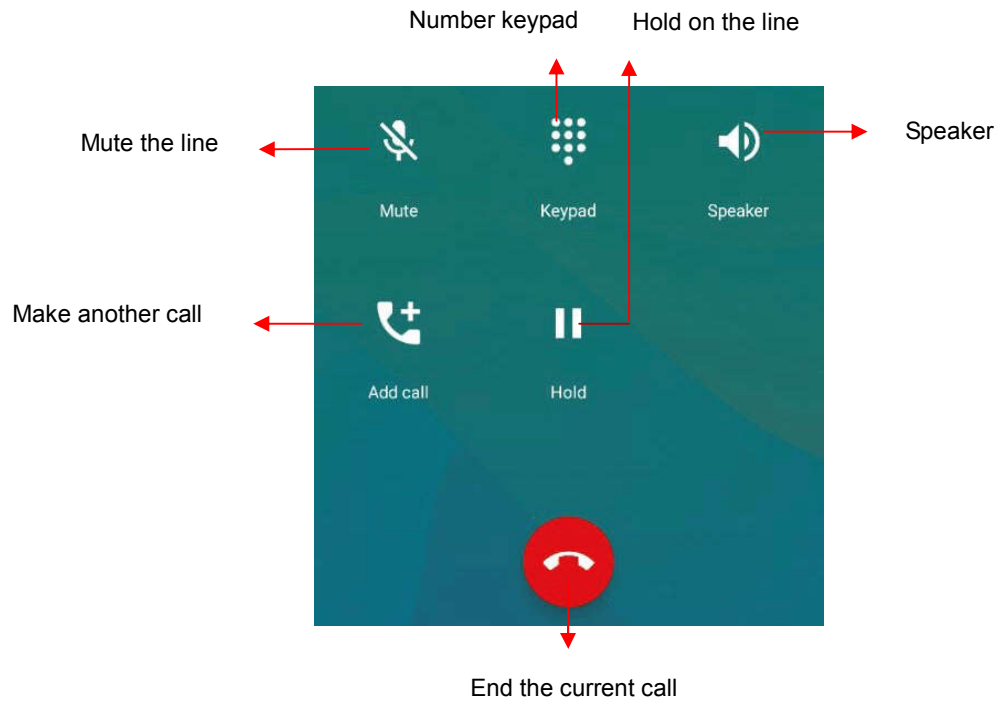
### **Make a call**

- Touch the phone icon on the Home screen.
- Enter the phone number you want to dial.
- Touch the phone icon to dial the number that you entered.



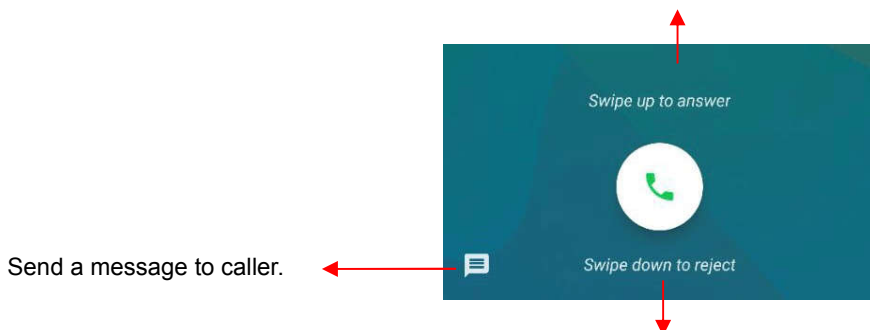
Touch to make an audio call.

## 📞 Ongoing call



## 📞 Incoming call

Drag the phone icon up to answer the call.



Drag the phone icon to down to reject the call

## 📞 Send a Message

You can use this phone to exchange text messages and multimedia messages with your friends on their mobile phones. The messages come to and from the same contact or phone number will be visible into a single conversation, so you can see your entire message history with a person conveniently.

### Enter text

- Tap the text field to see onscreen keyboard.
- Tap the keys on the keyboard to type, the characters you've entered appear in a strip above the keyboard with suggestions for the word you are typing to the write.
- Use the Delete key to erase characters to the left of the cursor.

- When you're finished typing, press back to close the keyboard.

## 6. Multimedia

### Camera

Camera is a combination of camera and camcorder that you use to shoot and share pictures and videos. Tap the image on the camera screen where should focus on. You can also change camera setting like transfer front and rear camera, adjust the exposure on this screen.

#### Take a photo

Touch to set flash to On, Off or Auto.

Touch to open Bokeh mode.

Touch to open Filter mode.

Touch to enter the Mode Settings.

Touch to enter the Camera Settings.

Slide down the screen to enter Mode Settings

Touch the screen to focus on it.

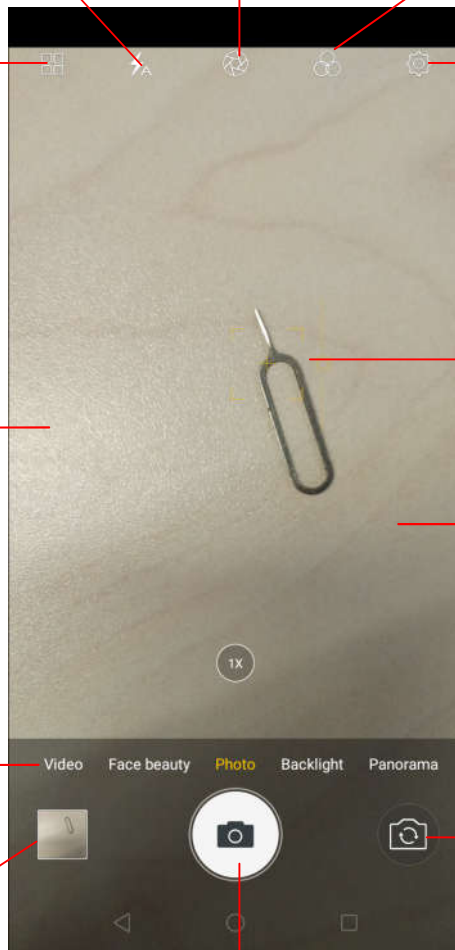
Pinch or spread the screen to zoom in or zoom out.

Slide right or left to transfer Video, Face beauty, Photo, Backlight, Panorama and last time selected

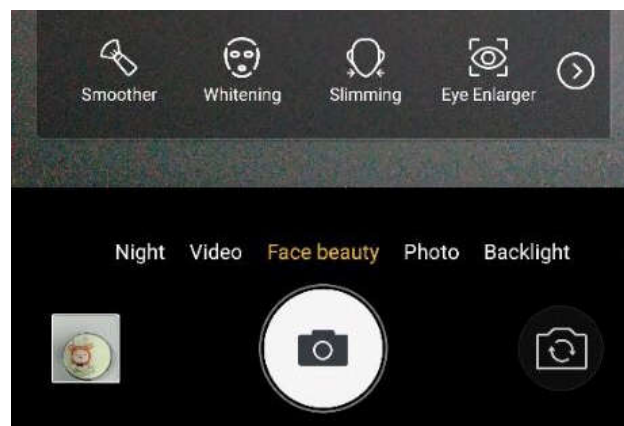
Touch to transfer between rear camera and front camera

Touch to enter photos

Touch to take a picture or shoot a video.



- **Time-lapse Mode** – Time lapse photography is the rapid play of the video, from a long period of time condensed to a very short period of time.
- **Professional Mode** – It includes Focus, Shutter Speed, WB, ISO, AE.
- **Slow motion Mode** - Using slow motion function make a short video, playing with a slow speed.
- **Group selfie Mode** – Take group selfie. Press the shutter to take first picture. Then, rotate the picture slowly to left side to take second picture. Finally, rotate the phone slowly to right side to take the third picture.
- **Panorama Mode** - Press camera button and slowly move the phone in one direction.
- **Backlight Mode** – Improve the photo quality in dynamic environment.
- **Face beauty Mode** – Beautify your photo and realize full skin beauty not just beautifying the face, so that presents more natural selfie. You can select Smoother, Whitening, Slimming, and Eye Enlarger. Drag the slider to adjust it.

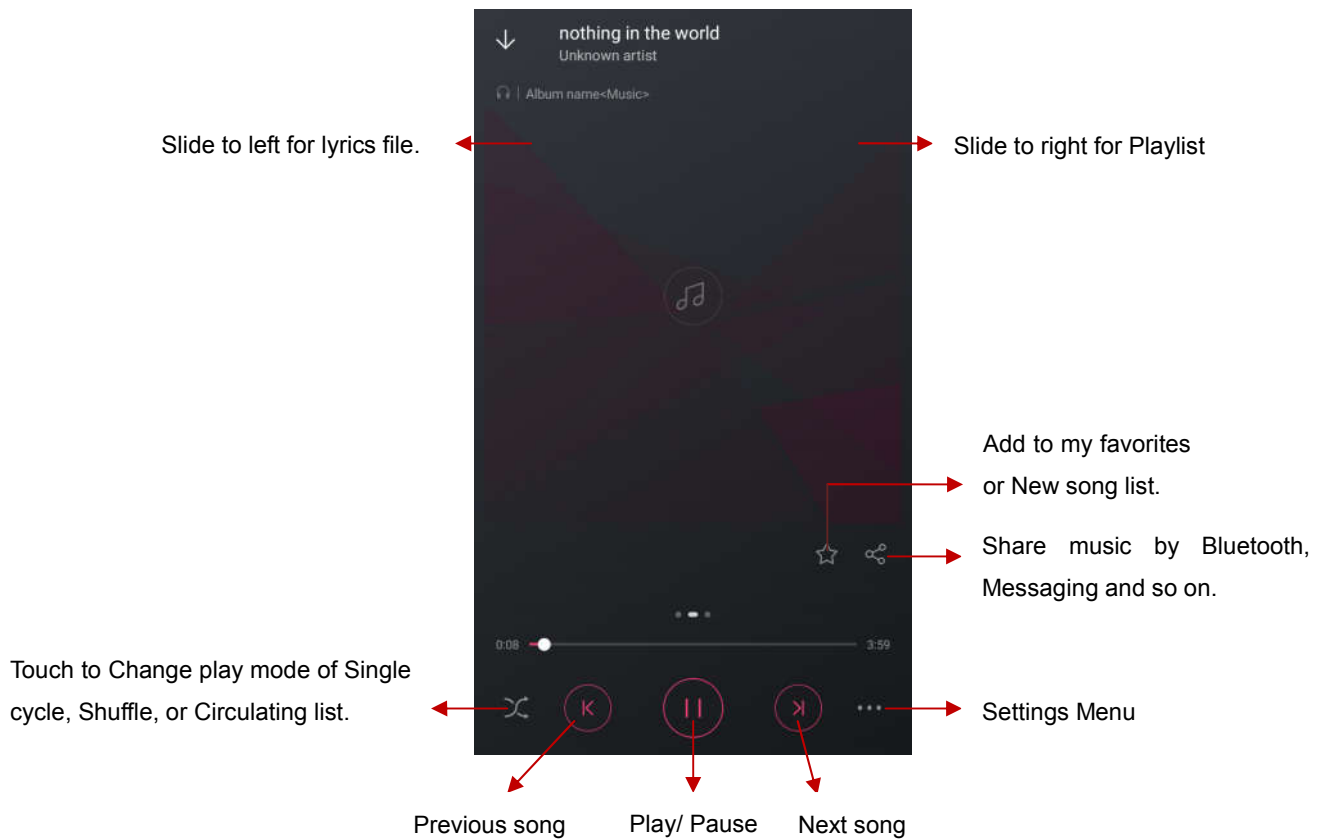


### Shoot a Video

- In camera mode, slide the screen to right for video capturing.
- Adjust the quality and other settings if you wish or leave them on automatic mode.
- Point the lens to frame the scene where you want to start.
- Touch the Video icon. Camera starts shooting the video.
- Touch Stop video icon to stop shooting. An image from your most recent video is displayed as a thumbnail at the bottom left.

### Music

You can use Music player to organize, listen to music and other audio files that you transfer to your phone from your computer.



## 7. Connection

Your phone can connect to a variety of networks and devices, including mobile networks for voice and data transmission, WLAN data networks, and Bluetooth devices, such as headsets. You can also connect your phone to a computer, to transfer files from your phone storage, and share your phone's mobile data connection via USB or as a portable WLAN hotspot.

### Airplane mode

Option1: **Settings-->More-->Airplane mode** to turn it on

Option2: Swipe down from the top edge to open control center--> tap Airplane mode

Some locations like Airplane may require you to turn off your phone's Cellular network, WLAN, and Bluetooth wireless connections. You can turn off all these wireless connections at once by placing your phone on Airplane mode.

### WLAN

WLAN is a wireless networking technology that can provide internet access at distance of up to 100 meters, depending on the WLAN router and your surroundings. You can configure the WLAN as follow:

- **Settings-->Wi-Fi**, check **WLAN** to turn it on.
- Enter **WLAN**. The phone scans for available WLAN networks and displays the names of those it finds. Secured networks are indicated with a Lock icon. The phone will auto login to the network if you have previously connected.

- Touch a network to connect to it.  
If the network is open, you are prompted to confirm that you want to connect to that network by touching connect. If the network is secured, you're prompted to enter a password or other credentials.

## **Bluetooth**

Bluetooth is a short-range wireless communications technology that devices can use to exchange information over a distance of about 10 meters. The most common Bluetooth devices are headphones for making calls or listening to music, hands-free kits for cars, and other portable device, including laptops and cell phones.

### To send a file

- **Settings--> Bluetooth**, check **Bluetooth** to turn it on.
- Enter **File Explorer** to select a file, Select **More--> Share--> Bluetooth**.
- Touch **Scan for devices**, the phone will scan for and display the names of all available Bluetooth devices in range.
- Touch the names of the other device in the list to pair them. After pairing the file will be sent.

### To receive a file

**Settings--> Bluetooth**, check **Bluetooth** to turn it on. Ensure your Bluetooth has been connected within visibility time.

You can receive files from the devices which are paired with yours. The file you received will be saved to the "**Bluetooth**" folder in the File Explorer.

### To connect to a Handsfree device

- Turn on the Handsfree device, make it in a searchable state;
- **Settings-->Bluetooth**, Select "**Search for devices**";
- After searching for the Handsfree device, Select it in the list to pair.
- After pairing, you can use the Handsfree device to listen to music, video and receive call.

## **USB**

You can connect the phone to your computer with a USB cable to transfer music, pictures, and other files.

### Turn on USB connection

1. Connect the phone to your computer with a USB cable.
2. In notification center, tap **USB charging this device** to open USB connection.
3. Choose the USB options.
  - Charge only**, connected as a USB for charging.
  - Copy files**, Transfer music, videos, documents and other documents (MTP).
  - View photos**, Browse photos in DCIM and Pictures file folder (PTP).

✓ **Note:**

Do not disconnect the USB cable from the phone when you are transferring files. Doing so may cause data loss or phone damage.


## 8. Features

### **Front Camera Portrait**

Front Camera Portrait can achieve the background blur effect with real-time and adjustable preview, which helps you be the center of attention.



**How to use**

- 1) Open the camera
- 2) Select the front camera mode
- 3) Click the portrait icon 
- 4) Take pictures

### **Group Selfie**

Put more details in a single photo. Even many people take selfie together.



**How to use**

- 1) Turn the camera on
- 2) Select the front camera mode
- 3) Select the group selfie feature
- 4) Take pictures

### **Portrait Effect**

Excellent Portrait effect makes your photographs visually appealing. You can change the highlights to present the different photo effects.



**How to use**

- 1) Turn the camera on
- 2) Select the main camera mode
- 3) Select the portrait feature
- 4) Take pictures



### **Face ID**

Register face to unlock the phone. It can be unlocked even in a full black environment.

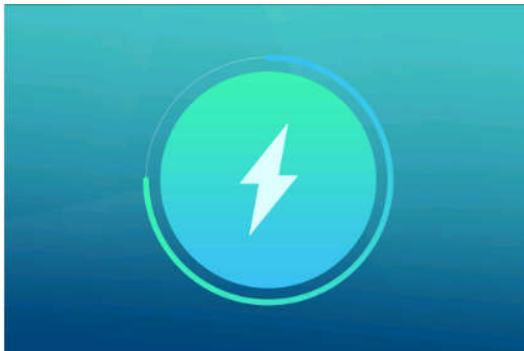


How to use

- 1) Settings-Security-Face ID
- 2) Add a face
- 3) Unlock your phone under the lock screen

### **Power Manager**

Extreme power saving, always in power.



How to use

- 1) Settings-->More settings--> Battery--> Power manager
- 2) Two power saving modes are available

### **Fingerprint Security**

Support fingerprint unlock.

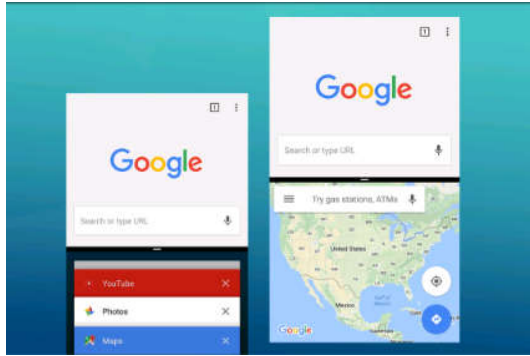


How to use

- 1) Phone settings --> Security --> Fingerprint
- 2) Set the phone security password
- 3) Place your finger on fingerprint sensor for fingerprint entry

## Split Screen

You can run two different applications on the same screen.



How to use

- 1) Click the multi task key and long press application to drag to the top of screen
- 2) Click to select another application that needs split screen
- 3) Or long press the multi-task key on the split table application page

## New Navigation Mode

Use sliding gestures to perform the same function.

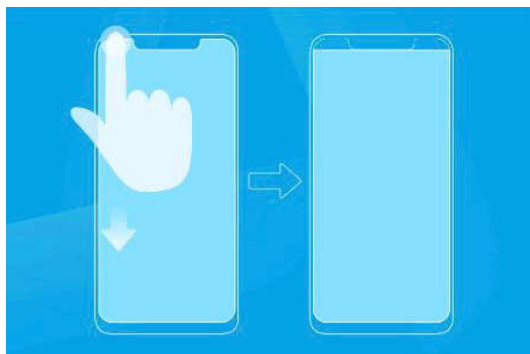


How to use

- 1) Settings-->Navigation bar
- 2) Change navigation mode
- 3) Slide upward on the bottom of the screen

## Notch Screen Gesture

With the phone unlocked, slide down from the upper left corner of the screen to switch the screen display ratio between 18:9 and 19:9; namely, switch the screen display area between the rectangular and U shapes.



How to use

- 1) Settings-->Display-->Switch screen display area
- 2) Turn the switch on
- 3) Slide down from the upper left corner of the screen

# 9. Operation

## Smart Gestures

**Settings-->More settings--> Smart Gestures** to turn it on.

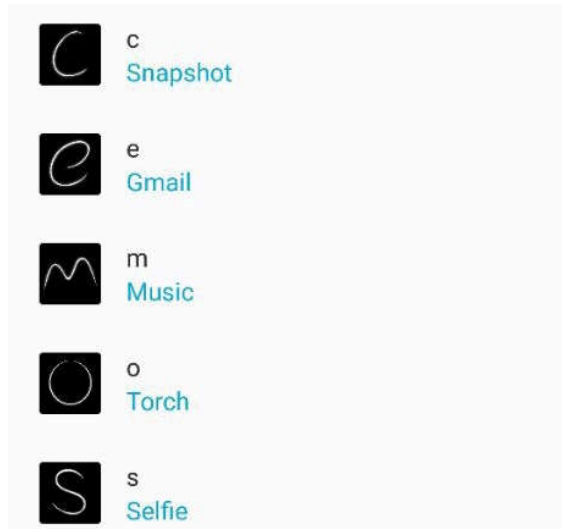
The smart gestures system supports a variety of experience and control, through gesture can be more convenient operation, some of the smart gesture functions will not work while

flip cover is closed.

- Black screen gestures

**Settings--> More settings --> Smart Gestures --> Select Black screen gestures**

Draw pattern to access menu quickly while phone is on sleep mode.



- Smart Vibration Reminder

**Settings--> More settings --> Smart Gestures -->Select Smart Vibration Reminder**

When the phone has missed call or unread SMS, pick up it in sleep screen will vibrate to remind again.



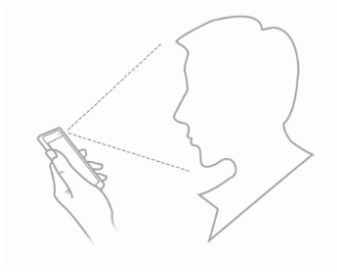
- Smart bright screen

**Settings--> More settings --> Smart Gestures-->Select Smart bright screen**

When front camera detects you are viewing screen, the screen will be maintained normally.

The following scenarios, the function may fail:

- User doesn't face on the screen
- The light is too strong or too dark
- Front camera is used by other applications



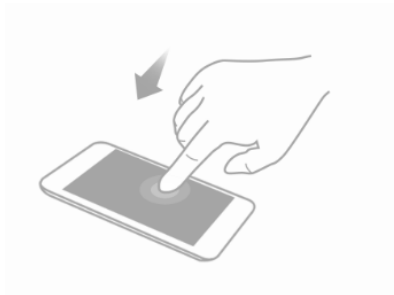
- Double click wake up

**Settings--> More settings --> Smart Gestures -->Select Double click wake up**

When the screen is in sleep mode, quickly double tap to wake up the phone.

①

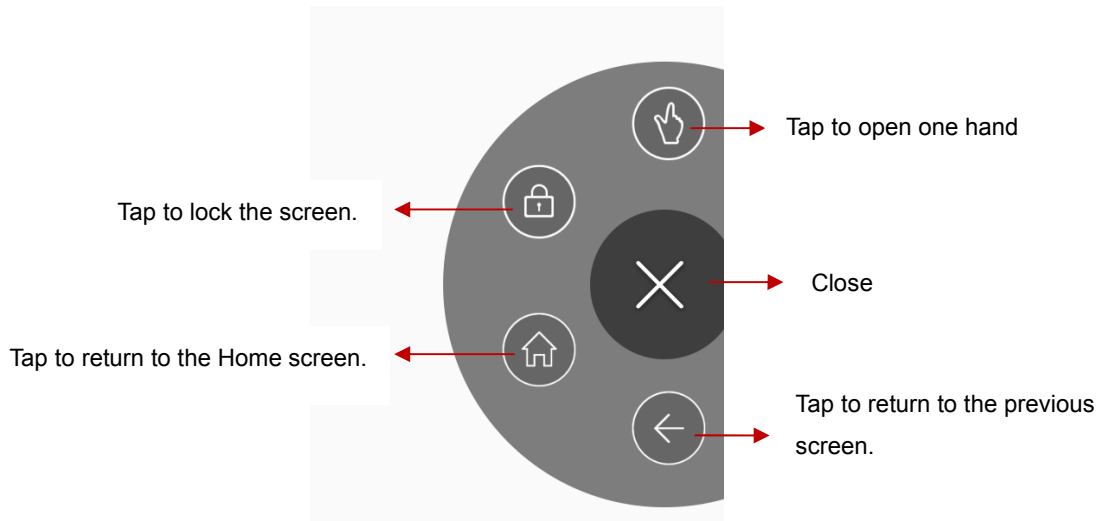
②



### **Suspend option**

Long press can be hidden in the notification bar. Operation the suspend button, achieved to return, sleep and so on.

**Settings--> More settings -->Suspend option**



## 10. Warnings and notes

### Operational Warnings

Important information on safe and efficient operation. Read this information before using your phone. For the safe and efficient operation of your phone, observe these guidelines:

**Potentially explosive at atmospheres:** Turn off your phone when you are in any areas with a potentially explosive atmosphere, such as fueling areas (gas or petrol stations, below deck on boats), storage facilities for fuel or chemicals, blasting areas and areas near electrical blasting caps, and areas where there are chemicals or particles (Such as metal powders, grains, and dust) in the air.

**Interference to medical and personal Electronic Devices:** Most but not all electronic equipment is shielded from RF signals and certain electronic equipment may not be shielded against the RF signals from your phone.

**Audio Safety:** This phone is capable of producing loud noises which may damage your hearing. When using the speaker phone feature, it is recommended that you place your phone at a safe distance from your ear.

**Other Medical Devices, hospitals:** If you use any other personal medical device, consult the manufacturer of your device to determine if it is adequately shielded from external RF energy. Your physician may be able to assist you in obtaining this information. Turn your phone OFF in health care facilities when any regulations posted in these areas instruct you to do so. Hospitals or health care facilities may be using equipment that could be sensitive to external RF energy.

**Product statement on handling and use:** You alone are responsible for how you use your phone and any consequences of its use.

You must always switch off your phone wherever the use of a phone is prohibited. Use of your phone is subject to safety measures designed to protect users and their environment. Always treat your phone and its accessories with care and keep it in a clean and dust-free place.

Do not expose your phone or its accessories to open flames or lit tobacco products.

Do not expose your phone or its accessories to liquid, moisture, or high humidity.

Do not drop, throw, or try to bend your phone or its accessories.

Do not use harsh chemicals, cleaning solvents, or aerosols to clean the device or its accessories.

Do not attempt to disassemble your phone or its accessories; only authorized personnel can do so.

Do not expose your phone or its accessories to extreme temperatures, minimum 32°F and maximum 104°F (0°C to 40°C).

**Battery:** Your phone includes an internal lithium-ion or lithium-ion polymer battery. Please note that use of certain data applications can result in heavy battery use and may require frequent battery charging. Any disposal of the phone or battery must comply with laws and regulations pertaining to lithium-ion or lithium-ion polymer batteries.

**Faulty and damaged products:** Do not attempt to disassemble the phone or its accessory. Only qualified personnel can service or repair the phone or its accessory. If your phone or its accessory has been submerged in water, Punctured, or subjected to a severe fall, do not use it until you have taken it to be checked at an authorized service center.

**FCC Regulations:**

This mobile phone complies with part 15 of the FCC Rules. Operation is subject to the following two conditions: (1) This device may not cause harmful interference, and (2) this

device must accept any interference received, including interference that may cause undesired operation.

This mobile phone has been tested and found to comply with the limits for a Class B digital device, pursuant to Part 15 of the FCC Rules. These limits are designed to provide reasonable protection against harmful interference in a residential installation. This equipment generates, uses and can radiated radio frequency energy and, if not installed and used in accordance with the instructions, may cause harmful interference to radio communications. However, there is no guarantee that interference will not occur in a particular installation. If this equipment does cause harmful interference to radio or television reception, which can be determined by turning the equipment off and on, the user is encouraged to try to correct the interference by one or more of the following measures:

- Reorient or relocate the receiving antenna.
- Increase the separation between the equipment and receiver.
- Connect the equipment into an outlet on a circuit different from that to which the receiver is connected.
- Consult the dealer or an experienced radio/TV technician for help.

FCC Note:

Caution: Changes or modifications not expressly approved by the party responsible for compliance could void the user's authority to operate the equipment.

#### **RF Exposure Information (SAR)**

This phone is designed and manufactured not to exceed the emission limits for exposure to radio frequency (RF) energy set by the Federal Communications Commission of the United States.

During SAR testing, this device was set to transmit at its highest certified power level in all tested frequency bands, and placed in positions that simulate RF exposure in usage against the head with no separation, and near the body with the separation of 10 mm. Although the SAR is determined at the highest certified power level, the actual SAR level of the device while operating can be well below the maximum value. This is because the phone is designed to operate at multiple power levels so as to use only the power required to reach the network. In general, the closer you are to a wireless base station antenna, the lower the power output.

The exposure standard for wireless devices employing a unit of measurement is known as the Specific Absorption Rate, or SAR.

The SAR limit set by the FCC is 1.6W/kg.

This device is complied with SAR for general population /uncontrolled exposure limits in ANSI/IEEE C95.1-1992 and had been tested in accordance with the measurement methods and procedures specified in IEEE1528.

The FCC has granted an Equipment Authorization for this model phone with all reported

SAR levels evaluated as in compliance with the FCC RF exposure guidelines. SAR information on this model phone is on file with the FCC and can be found under the Display Grant section of [www.fcc.gov/oet/ea/fccid](http://www.fcc.gov/oet/ea/fccid) after searching on FCC ID: YHLBLUVIVOXL4

For this device, the highest reported SAR value for usage against the head is 0.73 W/kg, for usage near the body is 1.03 W/kg.

While there may be differences between the SAR levels of various phones and at various positions, they all meet the government requirements.

SAR compliance for body-worn operation is based on a separation distance of 10 mm between the unit and the human body. Carry this device at least 10 mm away from your body to ensure RF exposure level compliant or lower to the reported level. To support body-worn operation, choose the belt clips or holsters, which do not contain metallic components, to maintain a separation of 10 mm between this device and your body. RF exposure compliance with any body-worn accessory, which contains metal, was not tested and certified, and use such body-worn accessory should be avoided.

Google, Android, Google Play, YouTube and other marks are trademarks of Google LLC.