


# EMC TEST REPORT



Report No.: 17070341-FCC-E-V1

Supersede Report No: N/A

Applicant	BLU Products, Inc.	
Product Name	Mobile Phone	
Model No.	TANK XTREME PRO	
Serial No.	N/A	
Test Standard	FCC Part 15 Subpart B Class B:2016, ANSI C63.4: 2014	
Test Date	May 23 to June 15 & 27, 2017	
Issue Date	June 27, 2017	
Test Result	<input checked="" type="checkbox"/> Pass <input type="checkbox"/> Fail	
Equipment complied with the specification	<input checked="" type="checkbox"/>	
Equipment did not comply with the specification	<input type="checkbox"/>	
<i>Evans He</i>	<i>David Huang</i>	
Evans He Test Engineer	David Huang Checked By	
This test report may be reproduced in full only Test result presented in this test report is applicable to the tested sample only		

Issued by:

**SIEMIC (SHENZHEN-CHINA) LABORATORIES**

Zone A, Floor 1, Building 2 Wan Ye Long Technology Park

South Side of Zhoushi Road, Bao' an District, Shenzhen, Guangdong China 518108

Phone: +86 0755 2601 4629801 Email: [China@siemic.com.cn](mailto:China@siemic.com.cn)

## Laboratories Introduction

SIEMIC, headquartered in the heart of Silicon Valley, with superior facilities in US and Asia, is one of the leading independent testing and certification facilities providing customers with one-stop shop services for Compliance Testing and Global Certifications.



In addition to testing and certification, SIEMIC provides initial design reviews and compliance management throughout a project. Our extensive experience with China, Asia Pacific, North America, European, and International compliance requirements, assures the fastest, most cost effective way to attain regulatory compliance for the global markets.

### Accreditations for Conformity Assessment

Country/Region	Scope
USA	EMC, RF/Wireless, SAR, Telecom
Canada	EMC, RF/Wireless, SAR, Telecom
Taiwan	EMC, RF, Telecom, SAR, Safety
Hong Kong	RF/Wireless, SAR, Telecom
Australia	EMC, RF, Telecom, SAR, Safety
Korea	EMI, EMS, RF, SAR, Telecom, Safety
Japan	EMI, RF/Wireless, SAR, Telecom
Singapore	EMC, RF, SAR, Telecom
Europe	EMC, RF, SAR, Telecom, Safety

Test Report	17070341-FCC-E-V1
Page	3 of 40

This page has been left blank intentionally.

# CONTENTS

1. REPORT REVISION HISTORY .....	5
2. CUSTOMER INFORMATION.....	5
3. TEST SITE INFORMATION .....	5
4. EQUIPMENT UNDER TEST (EUT) INFORMATION .....	6
5. TEST SUMMARY .....	9
6. MEASUREMENTS, EXAMINATION AND DERIVED RESULTS.....	11
6.1 AC POWER LINE CONDUCTED EMISSIONS.....	11
6.2 RADIATED EMISSIONS.....	17
ANNEX A. TEST INSTRUMENT.....	22
ANNEX B. EUT AND TEST SETUP PHOTOGRAPHS.....	23
ANNEX C. TEST SETUP AND SUPPORTING EQUIPMENT.....	36
ANNEX D. USER MANUAL / BLOCK DIAGRAM / SCHEMATICS / PARTLIST.....	39
ANNEX E. DECLARATION OF SIMILARITY .....	40

## 1. Report Revision History

Report No.	Report Version	Description	Issue Date
17070341-FCC-E	NONE	Original	June 16, 2017
17070341-FCC-E-V1	V1	Changed the Radiation above 1GHz data and Test setup photo	June 27, 2017

## 2. Customer information

Applicant Name	BLU Products, Inc.
Applicant Add	10814 NW 33rd St # 100 Doral, FL 33172
Manufacturer	BLU Products, Inc.
Manufacturer Add	10814 NW 33rd St # 100 Doral, FL 33172

## 3. Test site information

Lab performing tests	SIEMIC (Shenzhen-China) LABORATORIES
Lab Address	Zone A, Floor 1, Building 2 Wan Ye Long Technology Park South Side of Zhoushi Road, Bao' an District, Shenzhen, Guangdong China 518108
FCC Test Site No.	718246
IC Test Site No.	4842E-1
Test Software of Radiated Emission	Radiated Emission Program-To Shenzhen v2.0
Test Software of Conducted Emission	EZ-EMC(ver.lcp-03A1)

## 4. Equipment under Test (EUT) Information

Description of EUT:	Mobile Phone
Main Model:	TANK XTREME PRO
Serial Model:	N/A
Antenna Gain:	GSM850: -0.6dBi PCS1900: 0.7dBi UMTS-FDD Band V: -0.6dBi UMTS-FDD Band IV: 0.4dBi UMTS-FDD Band II: 0.6dBi LTE Band II: 0.6dBi LTE Band IV: 0.3dBi LTE Band VII: 0.8dBi LTE Band XII: -0.2dBi LTE Band XVII: -0.2dBi WIFI: 0.9dBi Bluetooth/BLE: 0.9dBi GPS: 0.7dBi
Antenna Type:	PIFA antenna
Input Power:	Adapter: Model: US-CB-1670 Input: AC100-240V~50/60Hz,0.5A Output: DC 9.0V,1.67A Battery: Model: C755768430P Spec : 3.8V,4300mAh,16.34Wh
Equipment Category :	JBP
Type of Modulation:	GSM / GPRS: GMSK EGPRS: GMSK,8PSK UMTS-FDD: QPSK LTE Band: QPSK, 16QAM 802.11b/g/n: DSSS, OFDM

Bluetooth: GFSK, π /4DQPSK, 8DPSK

BLE: GFSK

GPS:BPSK

GSM850 TX: 824.2 ~ 848.8 MHz; RX: 869.2 ~ 893.8 MHz

PCS1900 TX: 1850.2 ~ 1909.8 MHz; RX: 1930.2 ~ 1989.8 MHz

UMTS-FDD Band V TX: 826.4 ~ 846.6 MHz; RX: 871.4 ~ 891.6 MHz

UMTS-FDD Band IV TX:1712.4 ~ 1752.6 MHz;

RX : 2112.4 ~ 2152.6 MHz

UMTS-FDD Band II TX:1852.4 ~ 1907.6 MHz;

RX: 1932.4 ~ 1987.6 MHz

LTE Band II TX: 1850.7 ~ 1909.3MHz; RX : 1930.7 ~ 1989.3 MHz

LTE Band IV TX: 1710.7 ~ 1754.3 MHz; RX : 2110.7~ 2154.3 MHz

LTE Band VII TX: 2502.5 ~ 2567.5 MHz; RX : 2622.5 ~ 2687.5 MHz

LTE Band XII TX:699.7 ~ 715.3 MHz; RX : 729.7~ 745.3MHz

LTE Band XVII TX: 706.5 ~ 713.5 MHz; RX : 736.5 ~ 743.5 MHz

WIFI: 802.11b/g/n(20M): 2412-2462 MHz

WIFI: 802.11n(40M): 2422-2452 MHz

Bluetooth& BLE: 2402-2480 MHz

GPS: 1575.42 MHz

RF Operating Frequency (ies):

GSM 850: 124CH

PCS1900: 299CH

UMTS-FDD Band V: 102CH

UMTS-FDD Band IV: 202CH

UMTS-FDD Band II: 277CH

Number of Channels:

WIFI :802.11b/g/n(20M): 11CH

WIFI :802.11n(40M): 7CH

Bluetooth: 79CH

BLE: 40CH

GPS:1CH

Port:

USB Port, Earphone Port

Trade Name :



FCC ID:

YHLBLUTKXTPRO

GPRS/ EGPRS Multi-slot class

8/10/12



Test Report	17070341-FCC-E-V1
Page	8 of 40

---

Date EUT received: May 22, 2017

Test Date(s): May 23 to June 15 & 27, 2017



## 5. Test Summary

The product was tested in accordance with the following specifications.

All testing has been performed according to below product classification:

FCC Rules	Description of Test	Result
§15.107; ANSI C63.4: 2014	AC Power Line Conducted Emissions	Compliance
§15.109; ANSI C63.4: 2014	Radiated Emissions	Compliance

## Measurement Uncertainty

Parameter	Uncertainty
AC Power Line Conducted Emissions (150kHz~30MHz)	$\pm 3.11\text{dB}$
Radiated Emission(30MHz~1GHz)	$\pm 5.12\text{dB}$
Radiated Emission(1GHz~6GHz)	$\pm 5.34\text{dB}$

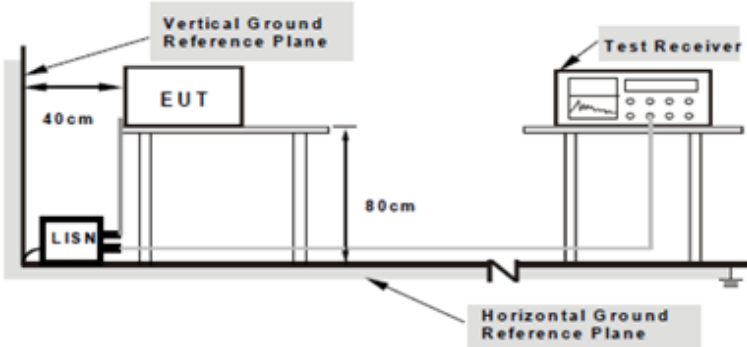
## 6. Measurements, Examination And Derived Results

### 6.1 AC Power Line Conducted Emissions

Temperature	23 °C
Relative Humidity	55%
Atmospheric Pressure	1031mbar
Test date :	May 31, 2017
Tested By :	Evans He

#### Requirement(s):

Spec	Item	Requirement	Applicable														
47CFR§15.107	a)	<p>For Low-power radio-frequency devices that is designed to be connected to the public utility (AC) power line, the radio frequency voltage that is conducted back onto the AC power line on any frequency or frequencies, within the band 150 kHz to 30 MHz, shall not exceed the limits in the following table, as measured using a 50 [mu] H/50 ohms line impedance stabilization network (LISN). The lower limit applies at the boundary between the frequencies ranges.</p> <table border="1"> <thead> <tr> <th rowspan="2">Frequency ranges (MHz)</th> <th colspan="2">Limit (dBµV)</th> </tr> <tr> <th>QP</th> <th>Average</th> </tr> </thead> <tbody> <tr> <td>0.15 ~ 0.5</td> <td>66 – 56</td> <td>56 – 46</td> </tr> <tr> <td>0.5 ~ 5</td> <td>56</td> <td>46</td> </tr> <tr> <td>5 ~ 30</td> <td>60</td> <td>50</td> </tr> </tbody> </table>	Frequency ranges (MHz)	Limit (dBµV)		QP	Average	0.15 ~ 0.5	66 – 56	56 – 46	0.5 ~ 5	56	46	5 ~ 30	60	50	<input checked="" type="checkbox"/>
Frequency ranges (MHz)	Limit (dBµV)																
	QP	Average															
0.15 ~ 0.5	66 – 56	56 – 46															
0.5 ~ 5	56	46															
5 ~ 30	60	50															

Test Setup	 <p style="text-align: center;"> <b>Note: 1. Support units were connected to second LISN.                  2. Both of LISNs (AMN) are 80cm from EUT and at least 80cm from other units and other metal planes support units.</b> </p>
------------	---

Procedure	<ol style="list-style-type: none"> <li>The EUT and supporting equipment were set up in accordance with the requirements of the standard on top of a 1.5m x 1m x 0.8m high, non-metallic table.</li> <li>The power supply for the EUT was fed through a 50Ω /50mH EUT LISN, connected to filtered mains.</li> </ol>
-----------	--

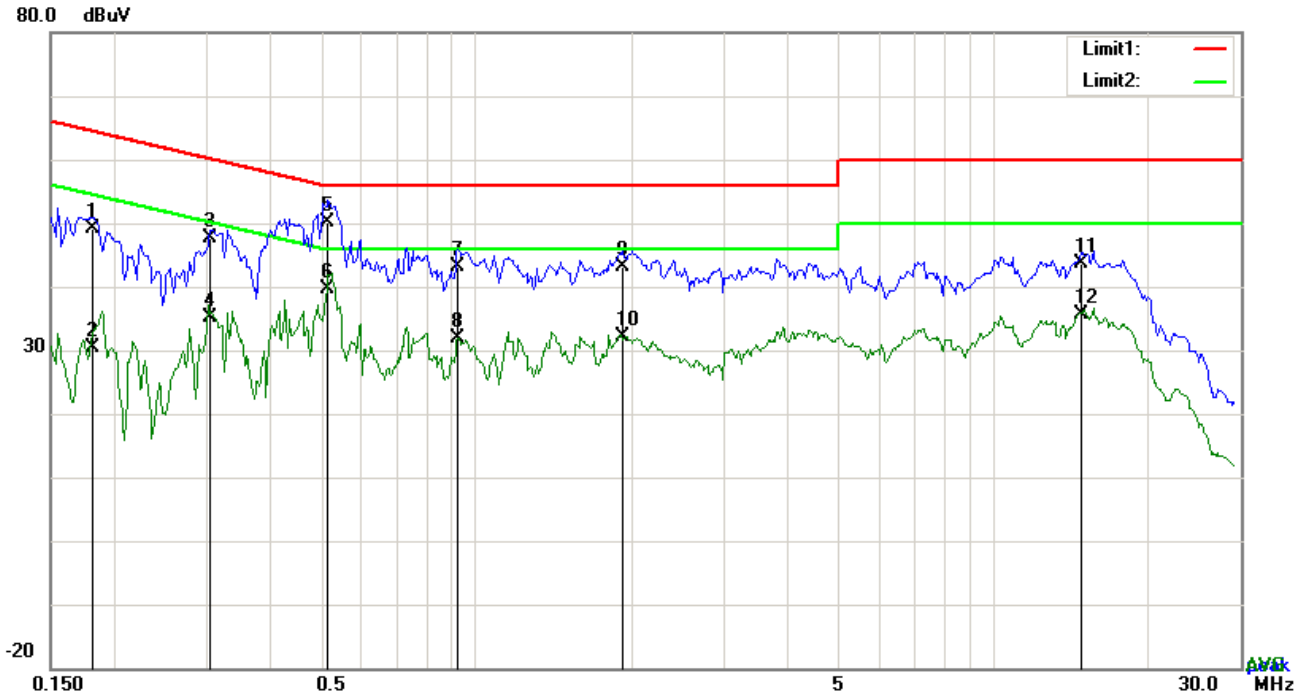
Test Report	17070341-FCC-E-V1
Page	12 of 40

	<ol style="list-style-type: none"> <li>3. The RF OUT of the EUT LISN was connected to the EMI test receiver via a low-loss coaxial cable.</li> <li>4. All other supporting equipment were powered separately from another main supply.</li> <li>5. The EUT was switched on and allowed to warm up to its normal operating condition.</li> <li>6. A scan was made on the NEUTRAL line (for AC mains) or Earth line (for DC power) over the required frequency range using an EMI test receiver.</li> <li>7. High peaks, relative to the limit line, The EMI test receiver was then tuned to the selected frequencies and the necessary measurements made with a receiver bandwidth setting of 10 kHz.</li> <li>8. Step 7 was then repeated for the LIVE line (for AC mains) or DC line (for DC power).</li> </ol>
Remark	
Result	<input checked="" type="checkbox"/> Pass <input type="checkbox"/> Fail

Test Data     Yes                       N/A

Test Plot     Yes (See below)             N/A

**Test Mode : USB Mode**

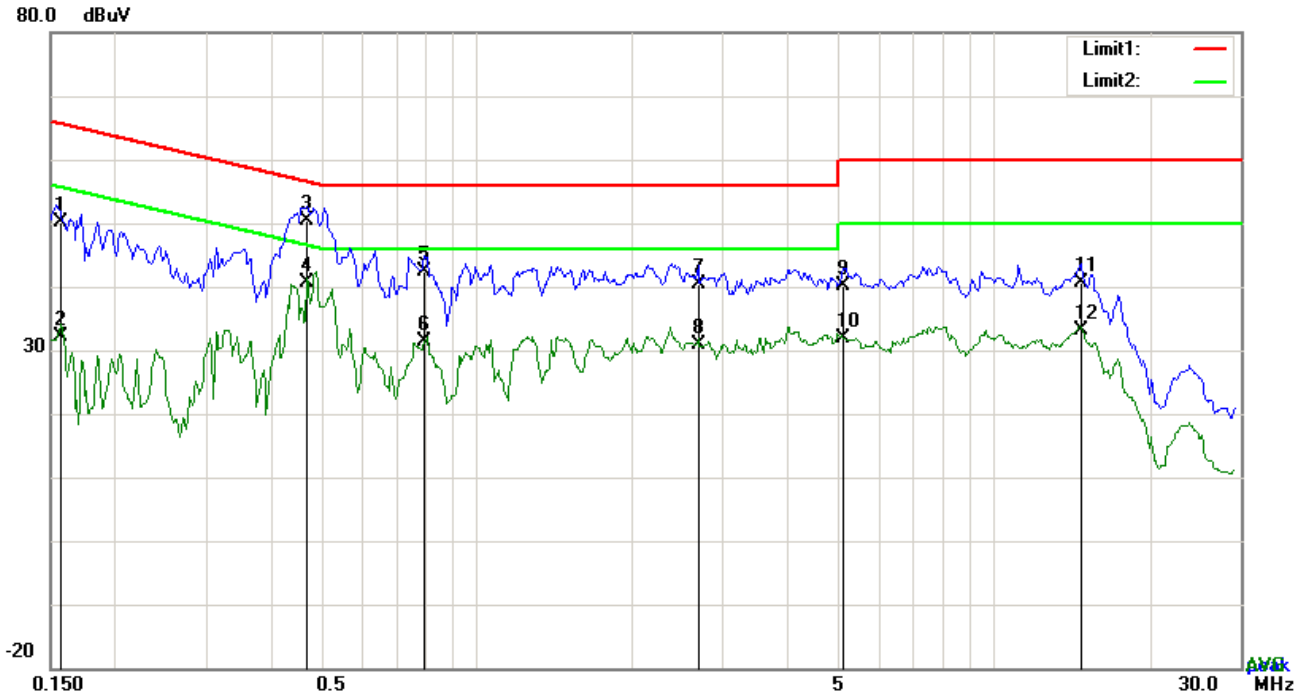


**Test Data**

**Phase Line Plot at 120Vac, 60Hz**

No.	P/L	Frequency	Reading	Detector	Corrected	Result	Limit	Margin
		(MHz)	(dBuV)		(dB)	(dBuV)	(dBuV)	(dB)
1	L1	0.1812	39.18	QP	10.03	49.21	64.43	-15.22
2	L1	0.1812	20.39	AVG	10.03	30.42	54.43	-24.01
3	L1	0.3060	37.66	QP	10.03	47.69	60.08	-12.39
4	L1	0.3060	25.14	AVG	10.03	35.17	50.08	-14.91
5	L1	0.5166	40.19	QP	10.03	50.22	56.00	-5.78
6	L1	0.5166	29.51	AVG	10.03	39.54	46.00	-6.46
7	L1	0.9222	33.19	QP	10.03	43.22	56.00	-12.78
8	L1	0.9222	21.80	AVG	10.03	31.83	46.00	-14.17
9	L1	1.9128	33.17	QP	10.04	43.21	56.00	-12.79
10	L1	1.9128	22.15	AVG	10.04	32.19	46.00	-13.81
11	L1	14.7858	33.49	QP	10.22	43.71	60.00	-16.29
12	L1	14.7858	25.30	AVG	10.22	35.52	50.00	-14.48

<b>Test Mode :</b>	<b>USB Mode</b>
--------------------	-----------------

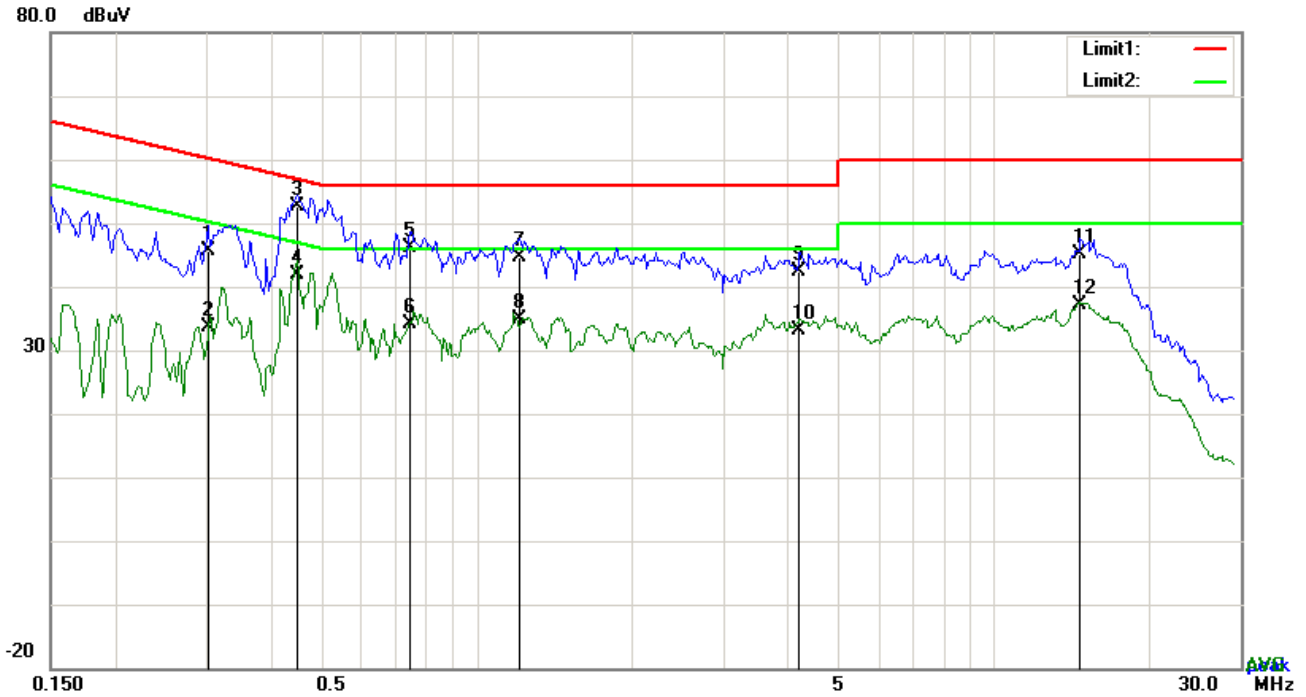


**Test Data**

**Phase Neutral Plot at 120Vac, 60Hz**

No.	P/L	Frequency	Reading	Detector	Corrected	Result	Limit	Margin
		(MHz)	(dBuV)		(dB)	(dBuV)	(dBuV)	(dB)
1	N	0.1578	40.18	QP	10.02	50.20	65.58	-15.38
2	N	0.1578	22.16	AVG	10.02	32.18	55.58	-23.40
3	N	0.4698	40.48	QP	10.02	50.50	56.52	-6.02
4	N	0.4698	30.64	AVG	10.02	40.66	46.52	-5.86
5	N	0.7935	32.25	QP	10.03	42.28	56.00	-13.72
6	N	0.7935	21.34	AVG	10.03	31.37	46.00	-14.63
7	N	2.6850	30.32	QP	10.05	40.37	56.00	-15.63
8	N	2.6850	20.86	AVG	10.05	30.91	46.00	-15.09
9	N	5.1177	29.98	QP	10.07	40.05	60.00	-19.95
10	N	5.1177	21.79	AVG	10.07	31.86	50.00	-18.14
11	N	14.7624	30.46	QP	10.20	40.66	60.00	-19.34
12	N	14.7624	22.98	AVG	10.20	33.18	50.00	-16.82

<b>Test Mode :</b>	<b>USB Mode</b>
--------------------	-----------------

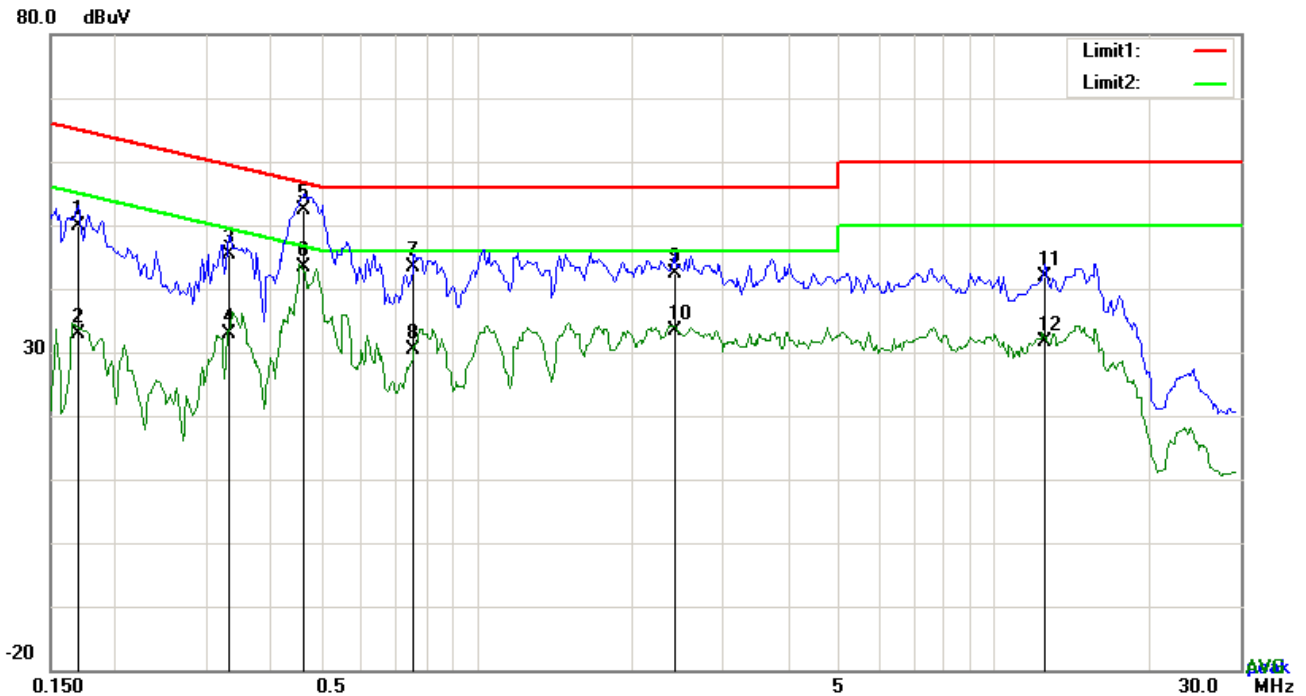


**Test Data**

**Phase Line Plot at 240Vac, 60Hz**

No.	P/L	Frequency	Reading	Detector	Corrected	Result	Limit	Margin
		(MHz)	(dBuV)		(dB}	(dBuV)	(dBuV)	(dB)
1	L1	0.3021	35.70	QP	10.03	45.73	60.18	-14.45
2	L1	0.3021	23.53	AVG	10.03	33.56	50.18	-16.62
3	L1	0.4503	42.49	QP	10.03	52.52	56.87	-4.35
4	L1	0.4503	31.74	AVG	10.03	41.77	46.87	-5.10
5	L1	0.7467	36.21	QP	10.03	46.24	56.00	-9.76
6	L1	0.7467	24.18	AVG	10.03	34.21	46.00	-11.79
7	L1	1.2108	34.48	QP	10.03	44.51	56.00	-11.49
8	L1	1.2108	24.93	AVG	10.03	34.96	46.00	-11.04
9	L1	4.2207	32.28	QP	10.07	42.35	56.00	-13.65
10	L1	4.2207	23.05	AVG	10.07	33.12	46.00	-12.88
11	L1	14.6922	34.82	QP	10.22	45.04	60.00	-14.96
12	L1	14.6922	26.83	AVG	10.22	37.05	50.00	-12.95

Test Mode :	USB Mode
-------------	----------



**Test Data**

**Phase Neutral Plot at 240Vac, 60Hz**

No.	P/L	Frequency	Reading	Detector	Corrected	Result	Limit	Margin
		(MHz)	(dBuV)		(dB}	(dBuV)	(dBuV)	(dB)
1	N	0.1695	39.88	QP	10.02	49.90	64.98	-15.08
2	N	0.1695	22.81	AVG	10.02	32.83	54.98	-22.15
3	N	0.3333	35.38	QP	10.02	45.40	59.37	-13.97
4	N	0.3333	22.98	AVG	10.02	33.00	49.37	-16.37
5	N	0.4659	42.48	QP	10.02	52.50	56.59	-4.09
6	N	0.4659	33.44	AVG	10.02	43.46	46.59	-3.13
7	N	0.7584	33.23	QP	10.03	43.26	56.00	-12.74
8	N	0.7584	20.30	AVG	10.03	30.33	46.00	-15.67
9	N	2.4120	32.34	QP	10.04	42.38	56.00	-13.62
10	N	2.4120	23.32	AVG	10.04	33.36	46.00	-12.64
11	N	12.5472	31.80	QP	10.17	41.97	60.00	-18.03
12	N	12.5472	21.51	AVG	10.17	31.68	50.00	-18.32

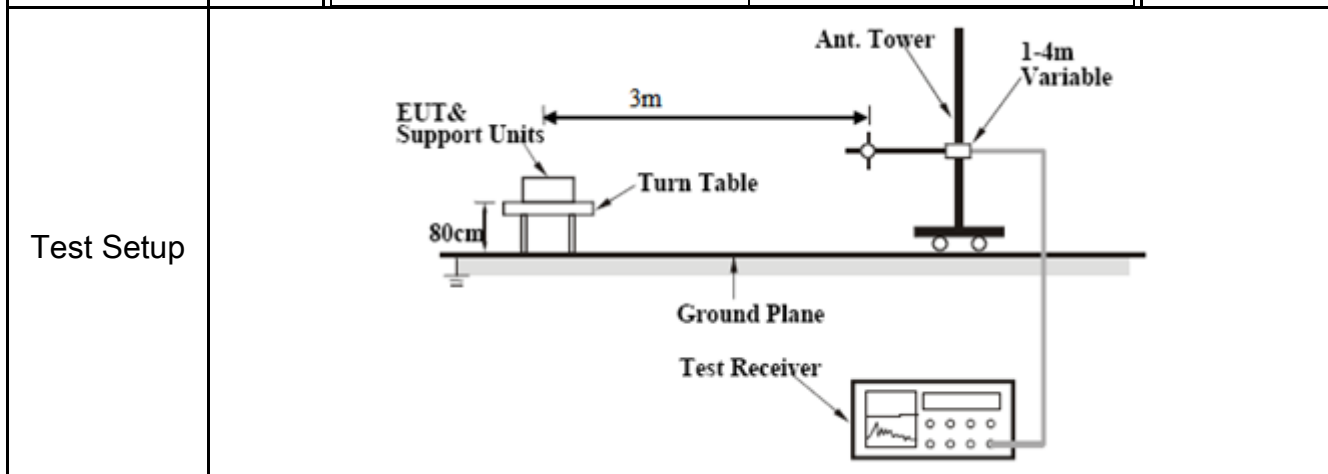


## 6.2 Radiated Emissions

Temperature	24 °C
Relative Humidity	51%
Atmospheric Pressure	1027mbar
Test date :	May 27 & June 27, 2017
Tested By :	Evans He

### Requirement(s):

Spec	Item	Requirement	Applicable										
47CFR§15.109(d)	a)	Except higher limit as specified elsewhere in other section, the emissions from the low-power radio-frequency devices shall not exceed the field strength levels specified in the following table and the level of any unwanted emissions shall not exceed the level of the fundamental emission. The tighter limit applies at the band edges	<input checked="" type="checkbox"/>										
		<table border="1"> <thead> <tr> <th>Frequency range (MHz)</th> <th>Field Strength (<math>\mu\text{V}/\text{m}</math>)</th> </tr> </thead> <tbody> <tr> <td>30 – 88</td> <td>100</td> </tr> <tr> <td>88 – 216</td> <td>150</td> </tr> <tr> <td>216 960</td> <td>200</td> </tr> <tr> <td>Above 960</td> <td>500</td> </tr> </tbody> </table>		Frequency range (MHz)	Field Strength ( $\mu\text{V}/\text{m}$ )	30 – 88	100	88 – 216	150	216 960	200	Above 960	500
		Frequency range (MHz)		Field Strength ( $\mu\text{V}/\text{m}$ )									
		30 – 88		100									
		88 – 216		150									
216 960	200												
Above 960	500												



Procedure	<ol style="list-style-type: none"> <li>1. The EUT was switched on and allowed to warm up to its normal operating condition.</li> <li>2. The test was carried out at the selected frequency points obtained from the EUT characterization. Maximization of the emissions, was carried out by rotating the EUT, changing the antenna polarization, and adjusting the antenna height in the following manner: <ol style="list-style-type: none"> <li>a. Vertical or horizontal polarization (whichever gave the higher emission level</li> </ol> </li> </ol>
-----------	---

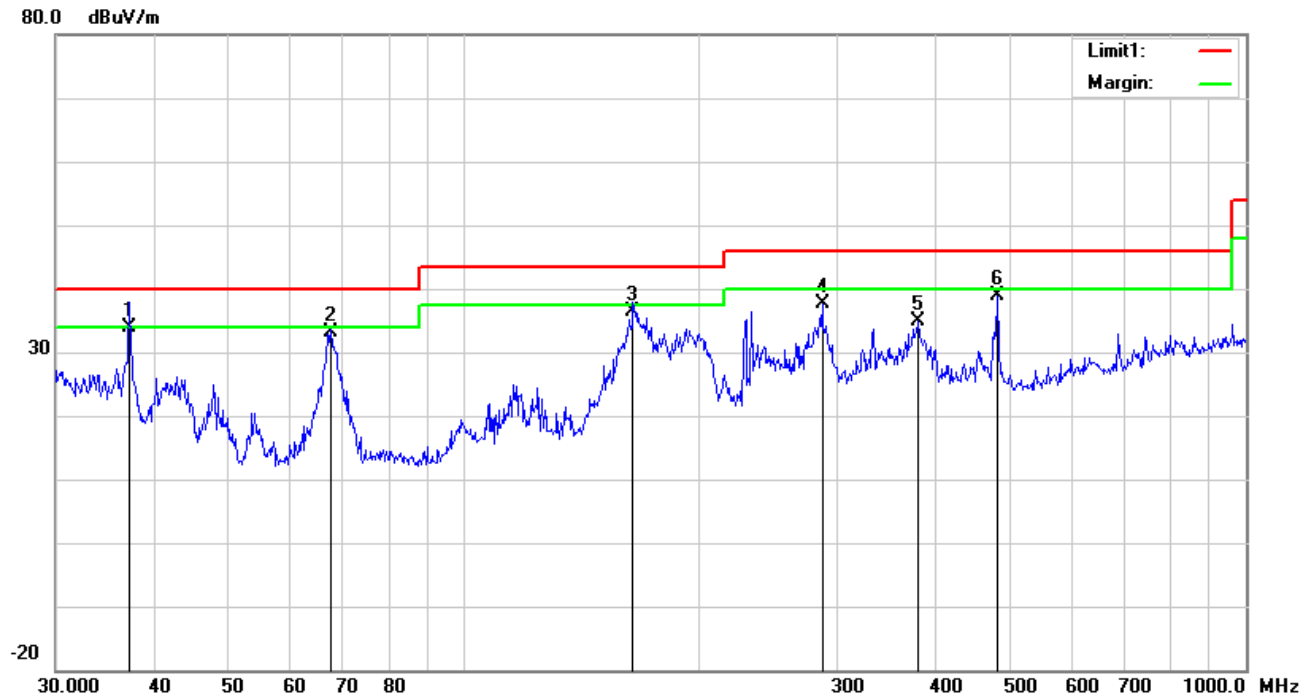
	<p>over a full rotation of the EUT) was chosen.</p> <p>b. The EUT was then rotated to the direction that gave the maximum emission.</p> <p>c. Finally, the antenna height was adjusted to the height that gave the maximum emission.</p> <p>3. The resolution bandwidth and video bandwidth of test receiver/spectrum analyzer is 120 kHz for Quasiy Peak detection at frequency below 1GHz.</p> <p>4. The resolution bandwidth of test receiver/spectrum analyzer is 1MHz and video bandwidth is 3MHz with Peak detection for Peak measurement at frequency above 1GHz. The resolution bandwidth of test receiver/spectrum analyzer is 1MHz and the video bandwidth with Peak detection for Average Measurement as below at frequency above 1GHz. ■ 1 kHz (Duty cycle &lt; 98%) □ 10 Hz (Duty cycle &gt; 98%)</p> <p>5. Steps 2 and 3 were repeated for the next frequency point, until all selected frequency points were measured.</p>
Remark	
Result	<input checked="" type="checkbox"/> Pass <input type="checkbox"/> Fail

Test Data     Yes                       N/A

Test Plot     Yes (See below)             N/A

Test Mode :	USB Mode
-------------	----------

**Below 1GHz**

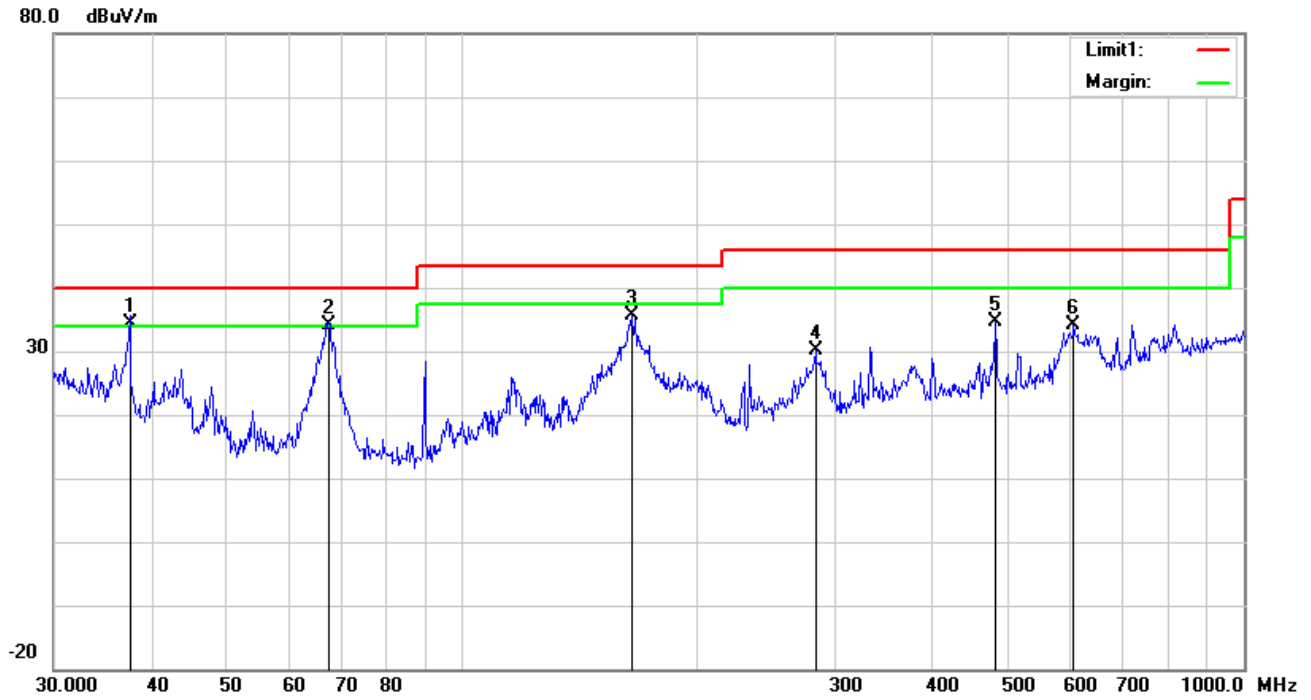


**Test Data**

**Horizontal Polarity Plot @3m**

No.	P/L	Frequency	Reading	Detector	Ant_F	PA_G	Cab_L	Result	Limit	Margin	Height	Degree
		(MHz)	(dBuV/m)		(dB/m)	(dB)	(dB)	(dBuV/m)	(dBuV/m)	(dB)	(cm)	(°)
1	H	37.2855	39.41	QP	15.88	22.26	0.77	33.80	40.00	-6.20	100	24
2	H	67.4382	46.99	QP	7.67	22.39	0.93	33.20	40.00	-6.80	100	211
3	H	164.3302	45.04	QP	12.25	22.27	1.38	36.40	43.50	-7.10	100	134
4	H	286.9823	45.17	peak	13.03	22.29	1.77	37.68	46.00	-8.32	100	305
5	H	381.2487	39.68	peak	15.31	22.06	2.02	34.95	46.00	-11.05	100	118
6	H	480.5276	41.01	peak	17.31	21.85	2.31	38.78	46.00	-7.22	100	226

**Below 1GHz**



**Test Data**

**Vertical Polarity Plot @3m**

No.	P/L	Frequency	Reading	Detector	Ant_F	PA_G	Cab_L	Result	Limit	Margin	Height	Degree
		(MHz)	(dBuV/m)		(dB/m)	(dB)	(dB)	(dBuV/m)	(dBuV/m)	(dB)	(cm)	(°)
1	V	37.5479	40.10	QP	15.69	22.27	0.78	34.30	40.00	-5.70	100	167
2	V	67.4382	47.89	QP	7.67	22.39	0.93	34.10	40.00	-5.90	100	78
3	V	164.9075	44.35	peak	12.21	22.27	1.38	35.67	43.50	-7.83	100	134
4	V	282.9852	37.82	peak	12.85	22.29	1.76	30.14	46.00	-15.86	200	245
5	V	480.5276	36.89	peak	17.31	21.85	2.31	34.66	46.00	-11.34	100	187
6	V	605.6592	34.02	peak	19.16	21.57	2.51	34.12	46.00	-11.88	100	164

***Above 1GHz***

Frequency (MHz)	Read_level (dB $\mu$ V/m)	Azimuth	Height (cm)	Polarity (H/V)	Factors (dB)	Level (dB $\mu$ V/m)	Limit (dB $\mu$ V/m)	Margin (dB)	Detector (PK/AV)
1156.42	69	165	100	V	-18.89	50.11	74	-23.89	PK
1789.33	72.63	211	200	V	-15.74	56.89	74	-17.11	PK
1789.33	54.28	211	200	V	-15.74	38.54	54	-15.46	AV
2512.26	70.37	35	100	V	-12.46	57.91	74	-16.09	PK
2512.26	52.21	35	100	V	-12.46	39.75	54	-14.25	AV
1288.59	69.12	189	100	H	-18.44	50.68	74	-23.32	PK
1905.12	72.69	302	100	H	-15.36	57.33	74	-16.67	PK
1905.12	56.61	302	100	H	-15.36	41.25	54	-12.75	AV
2688.77	70.84	114	100	H	-12.35	58.49	74	-15.51	PK
2688.77	49.89	114	100	H	-12.35	37.54	54	-16.46	AV

*Note1: The highest frequency of the EUT is 2480 MHz, so the testing has been conformed to  $5*2480MHz=12,400MHz$ .*

*Note2: The frequency that above 3GHz is mainly from the environment noise.*

*Note3: The AV measurement performed, more than 20dB below limit so AV test data was not presented.*

## Annex A. TEST INSTRUMENT

Instrument	Model	Serial #	Cal Date	Cal Due	In use
<b>AC Line Conducted Emissions</b>					
EMI test receiver	ESCS30	8471241027	09/16/2016	09/15/2017	<input checked="" type="checkbox"/>
Line Impedance Stabilization Network	LI-125A	191106	09/24/2016	09/23/2017	<input checked="" type="checkbox"/>
Line Impedance Stabilization Network	LI-125A	191107	09/24/2016	09/23/2017	<input checked="" type="checkbox"/>
ISN	ISN T800	34373	09/24/2016	09/23/2017	<input type="checkbox"/>
Transient Limiter	LIT-153	531118	08/31/2016	08/30/2017	<input checked="" type="checkbox"/>
<b>Radiated Emissions</b>					
EMI test receiver	ESL6	100262	09/16/2016	09/15/2017	<input checked="" type="checkbox"/>
OPT 010 AMPLIFIER (0.1-1300MHz)	8447E	2727A02430	08/31/2016	08/30/2017	<input checked="" type="checkbox"/>
Microwave Preamplifier (1 ~ 26.5GHz)	8449B	3008A02402	03/23/2017	03/22/2018	<input checked="" type="checkbox"/>
Bilog Antenna (30MHz~6GHz)	JB6	A110712	09/20/2016	09/19/2017	<input checked="" type="checkbox"/>
Double Ridge Horn Antenna	AH-118	71259	09/23/2016	09/22/2017	<input checked="" type="checkbox"/>

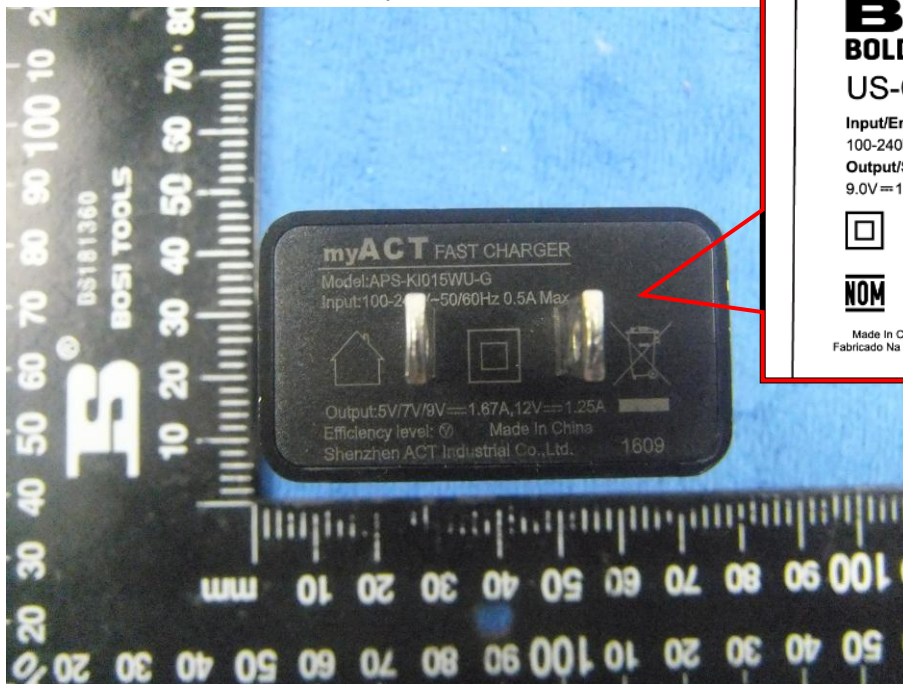
## Annex B. EUT And Test Setup Photographs

### Annex B.i. Photograph: EUT External Photo

Whole Package View



Adapter - Front View



**BLU**  
**BOLD LIKE US**  
**US-CB-1670**

**Input/Entrada/Entrée**  
100-240V ~ 50/60Hz 0.5A

**Output/Salida/Saída/Sortie**  
9.0V = 1.67A









Made In China | Hecho en China  
Fabricado Na China | Fabriqué en Chine



EUT - Front View

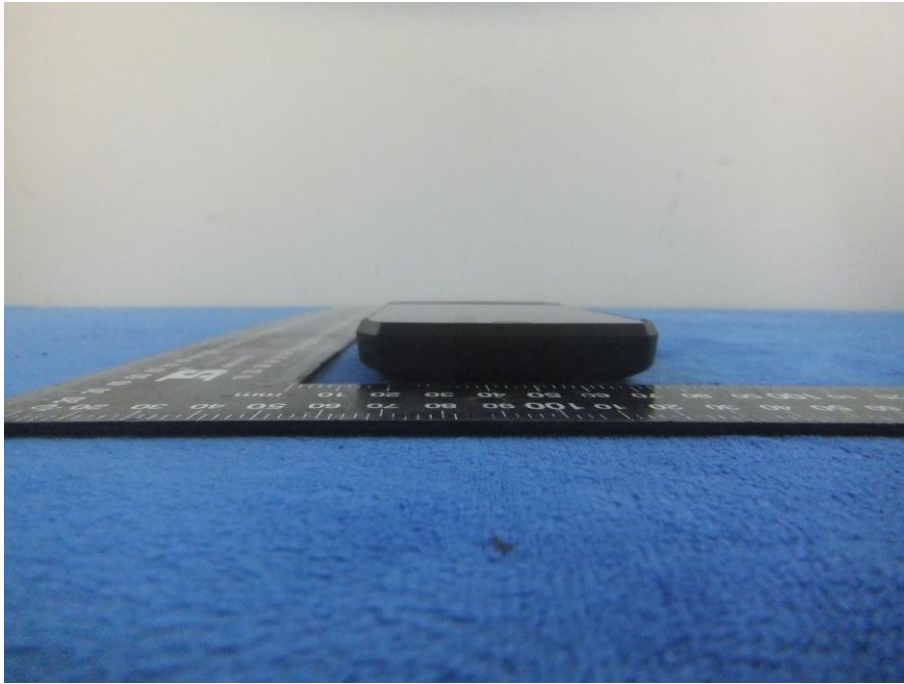


EUT - Rear View

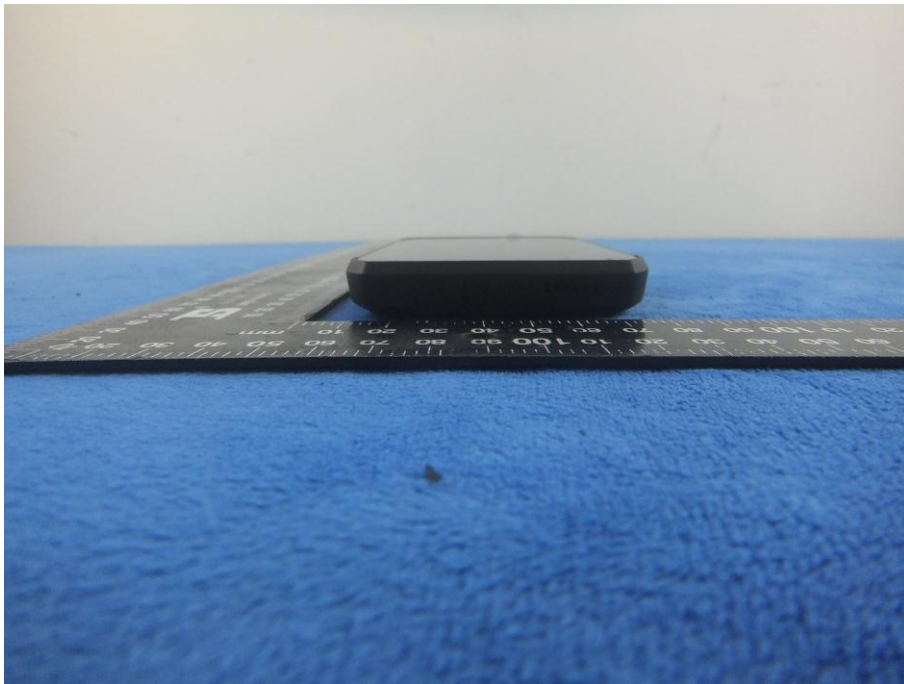




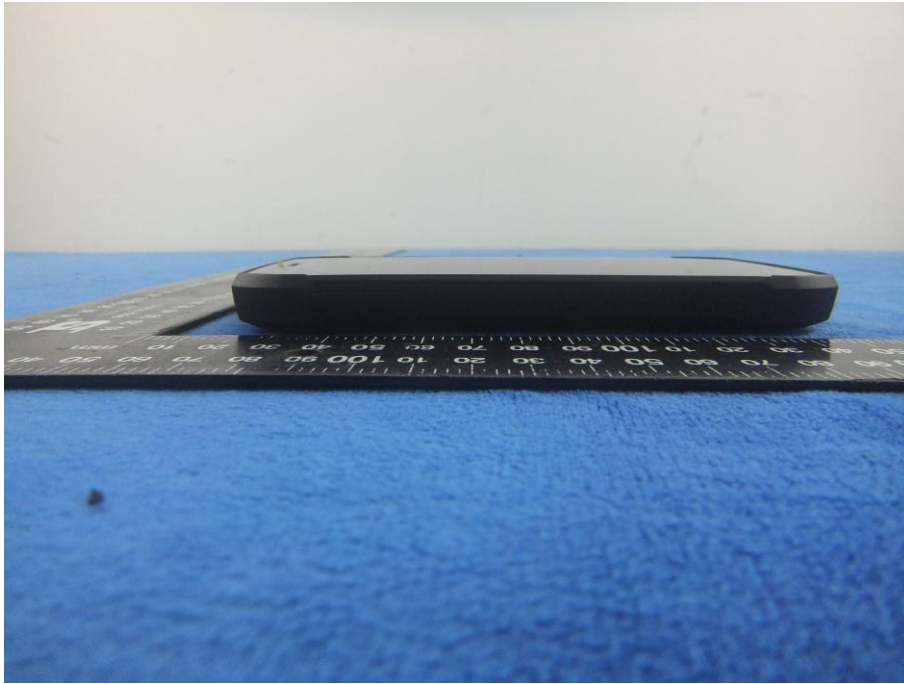
EUT - Top View



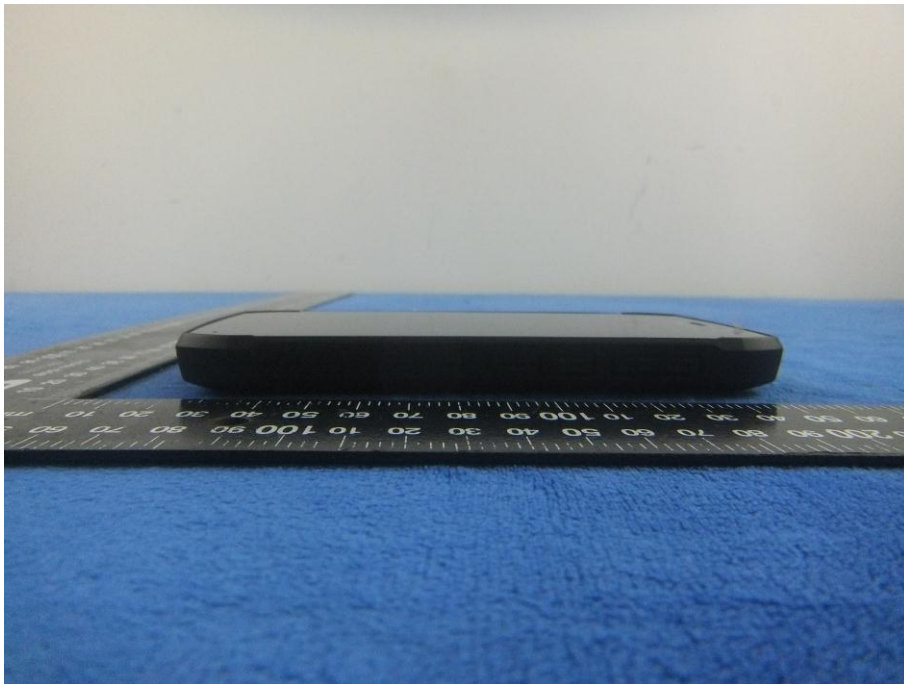
EUT - Bottom View



EUT - Left View



EUT - Right View



**Annex B.ii. Photograph: EUT Internal Photo**

Cover Off - Top View 1

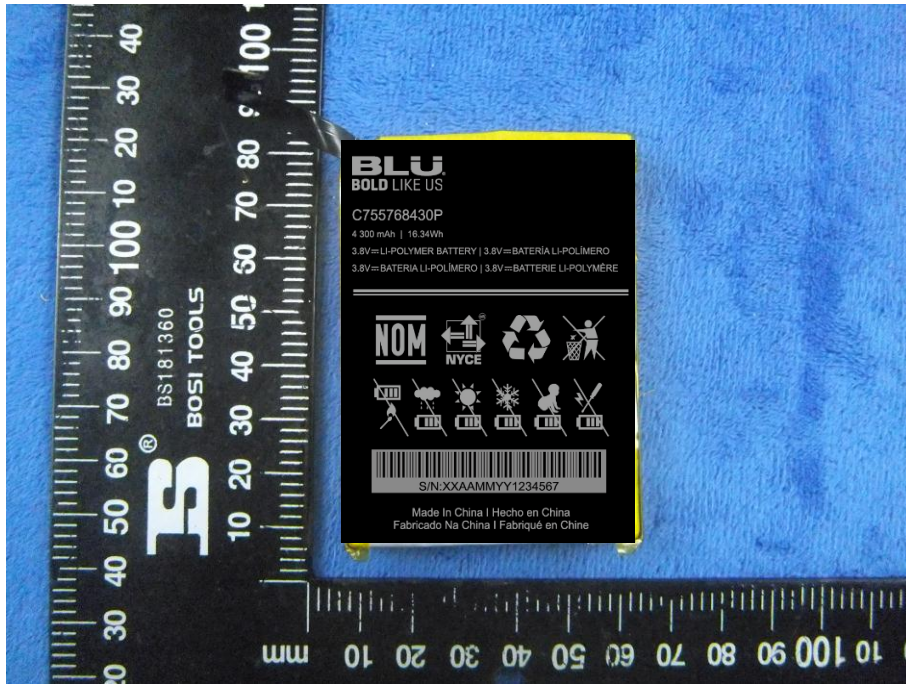


Cover Off - Top View 2





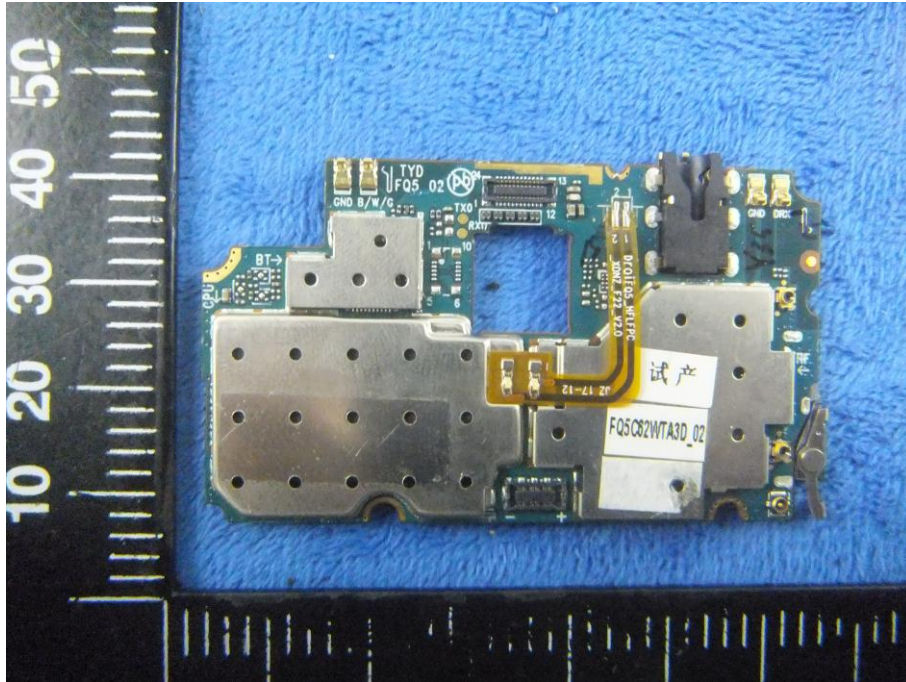
Battery - Front View



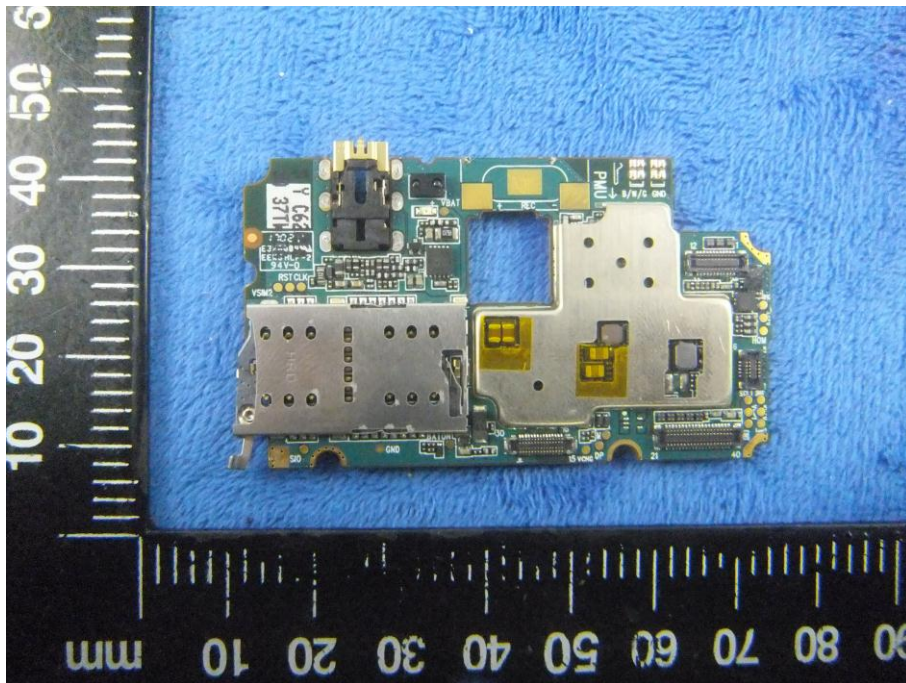
Battery - Rear View



Mainboard with Shielding - Front View

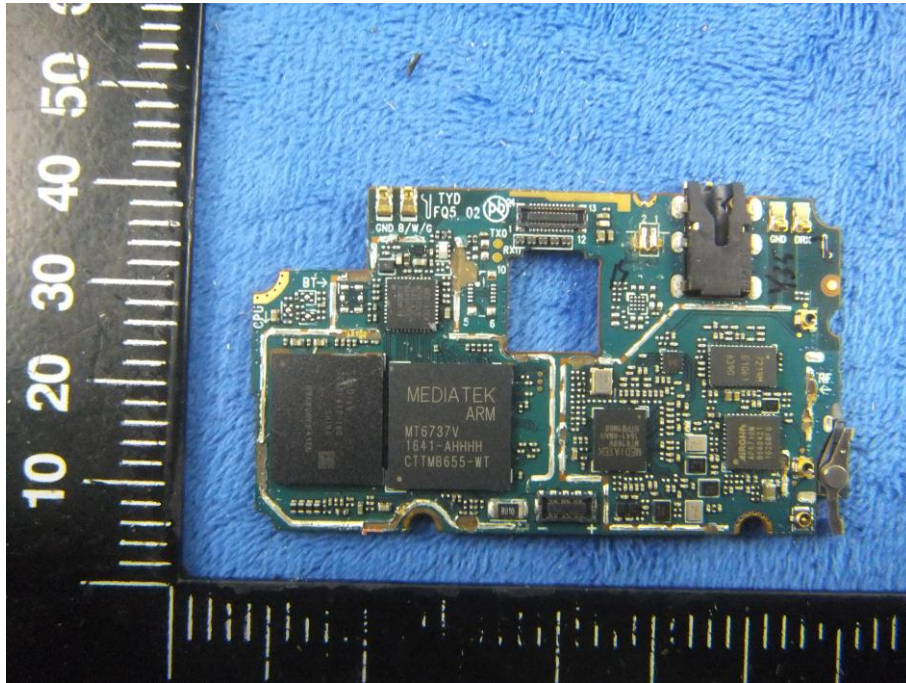


Mainboard without Shielding - Rear View

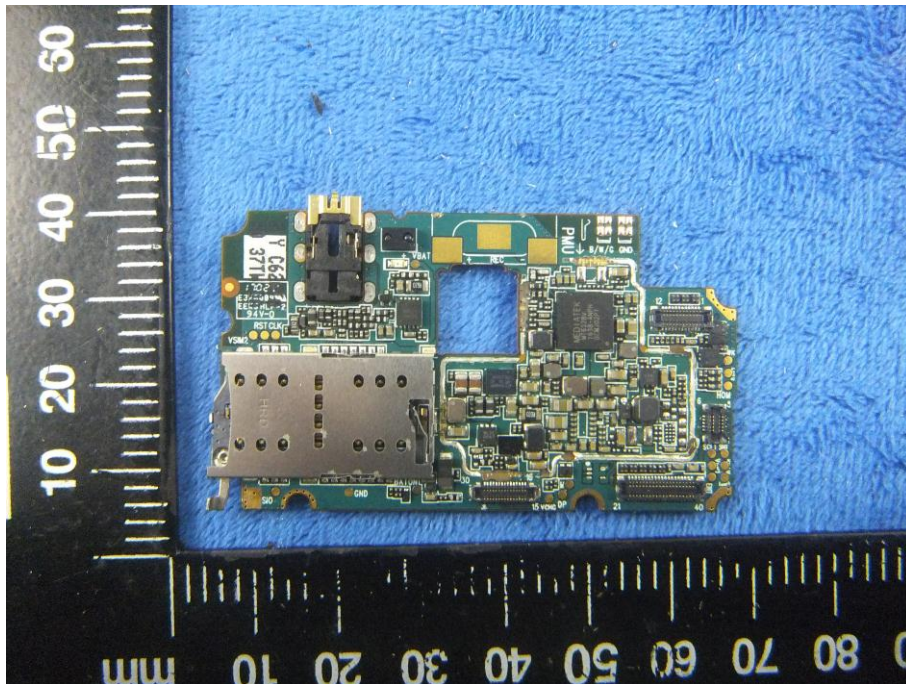




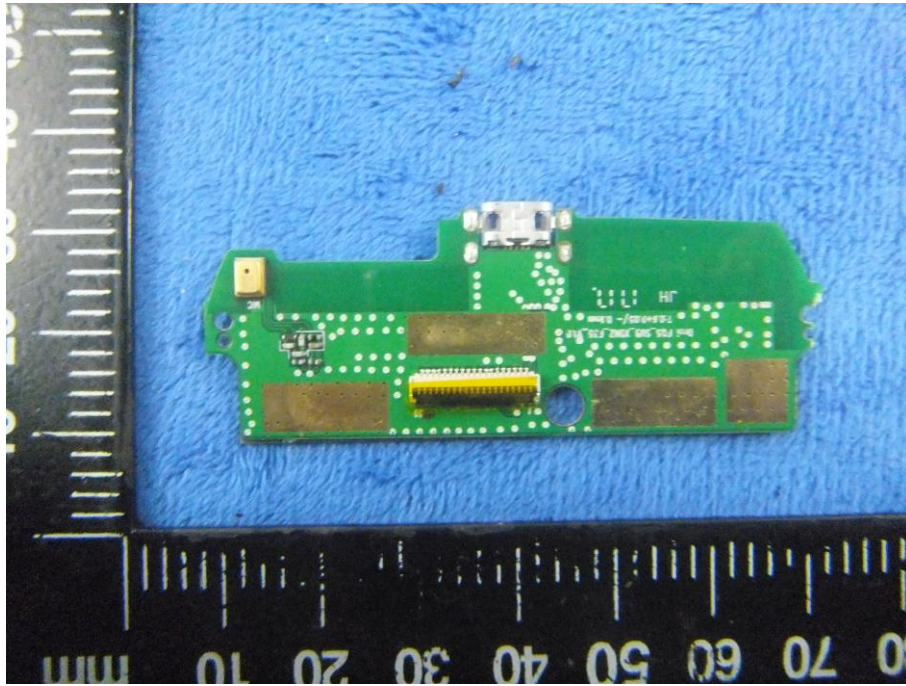
Mainboard without Shielding - Front View



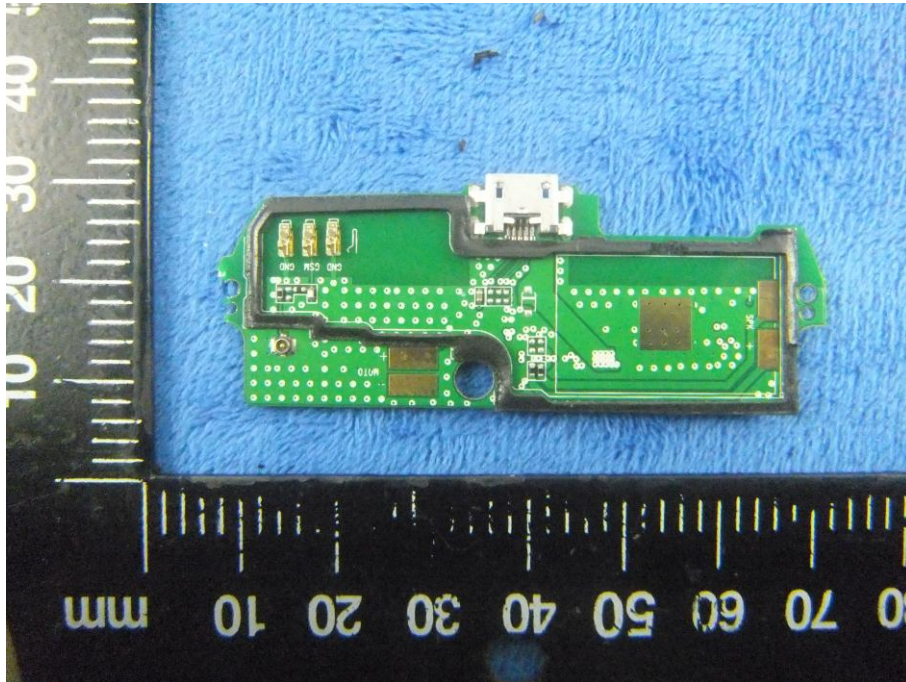
Mainboard without Shielding - Rear View



Small Mainboard - Front View



Small Mainboard - Rear View





LCD – Front View



LCD – Rear View





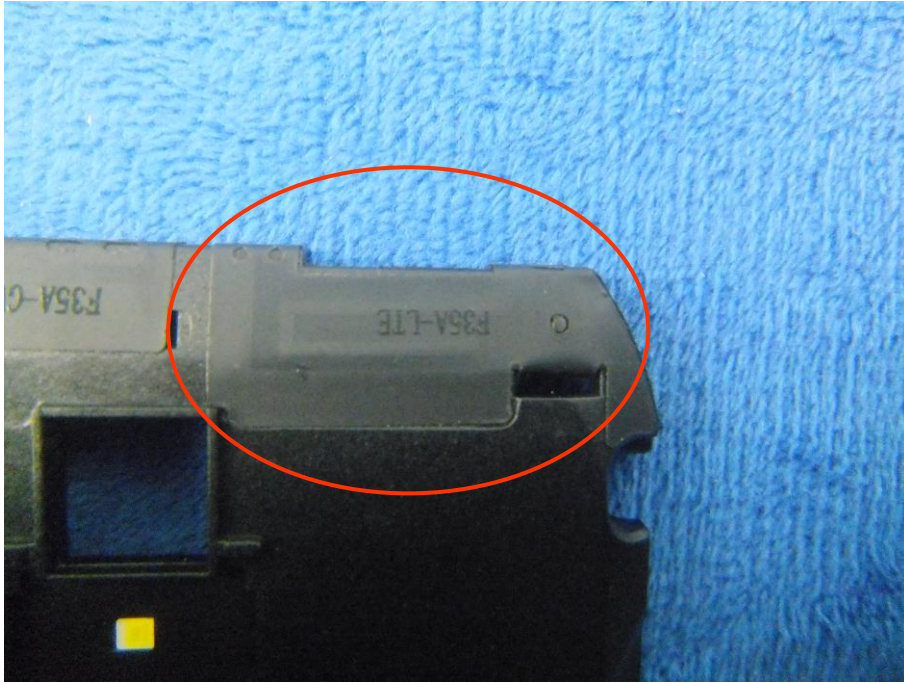
GSM/PCS/UMTS - Antenna View



BT/WIFI - Antenna View



LTE - Antenna View



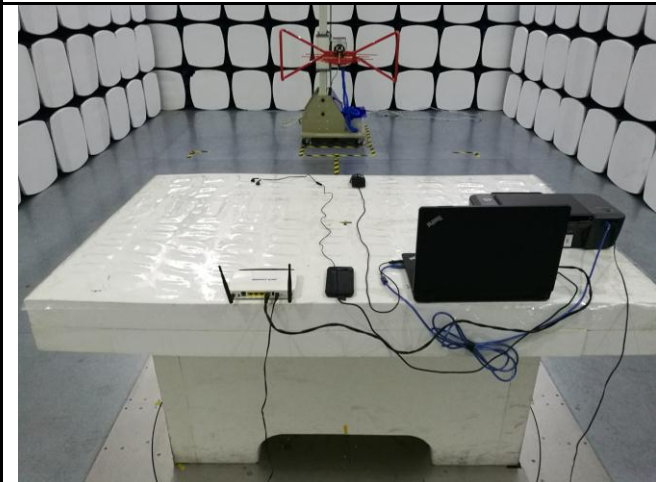
**Annex B.iii. Photograph: Test Setup Photo**



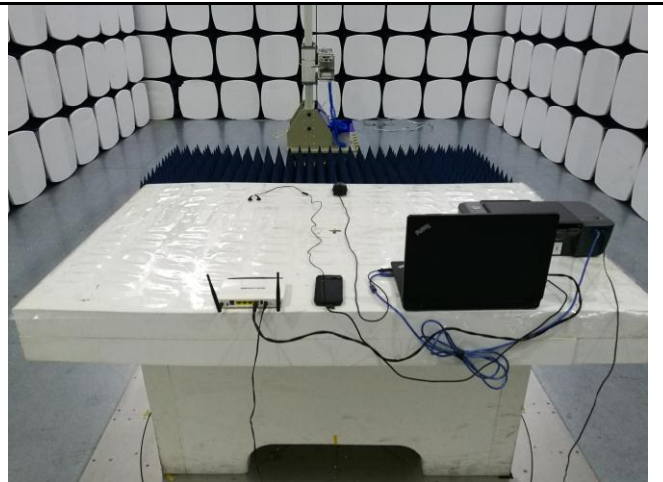
Conducted Emissions Test Setup – Front View



Conducted Emissions Test Setup – Side View



Radiated Emissions Test Setup Below 1GHz

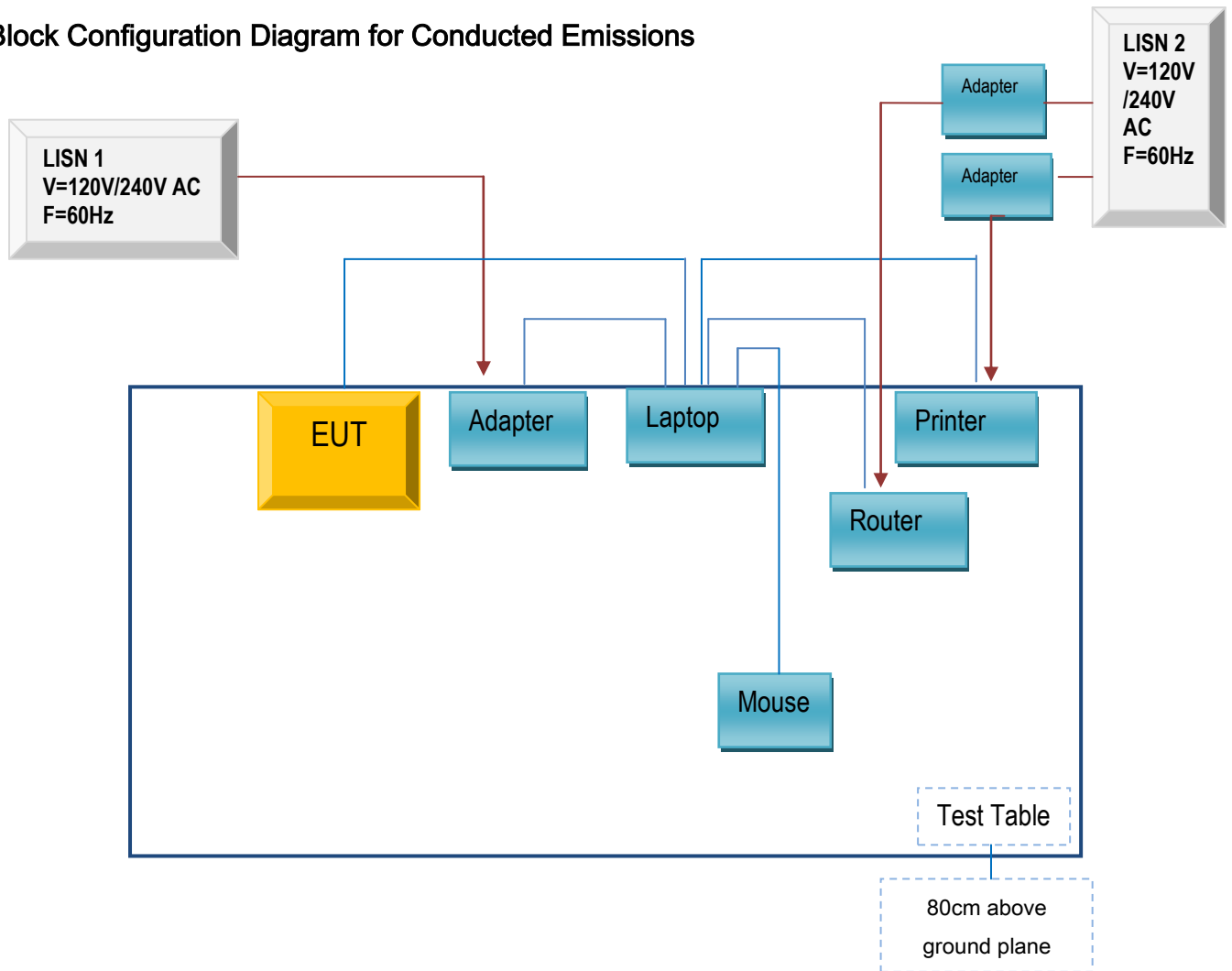


Radiated Emissions Test Setup Above 1GHz

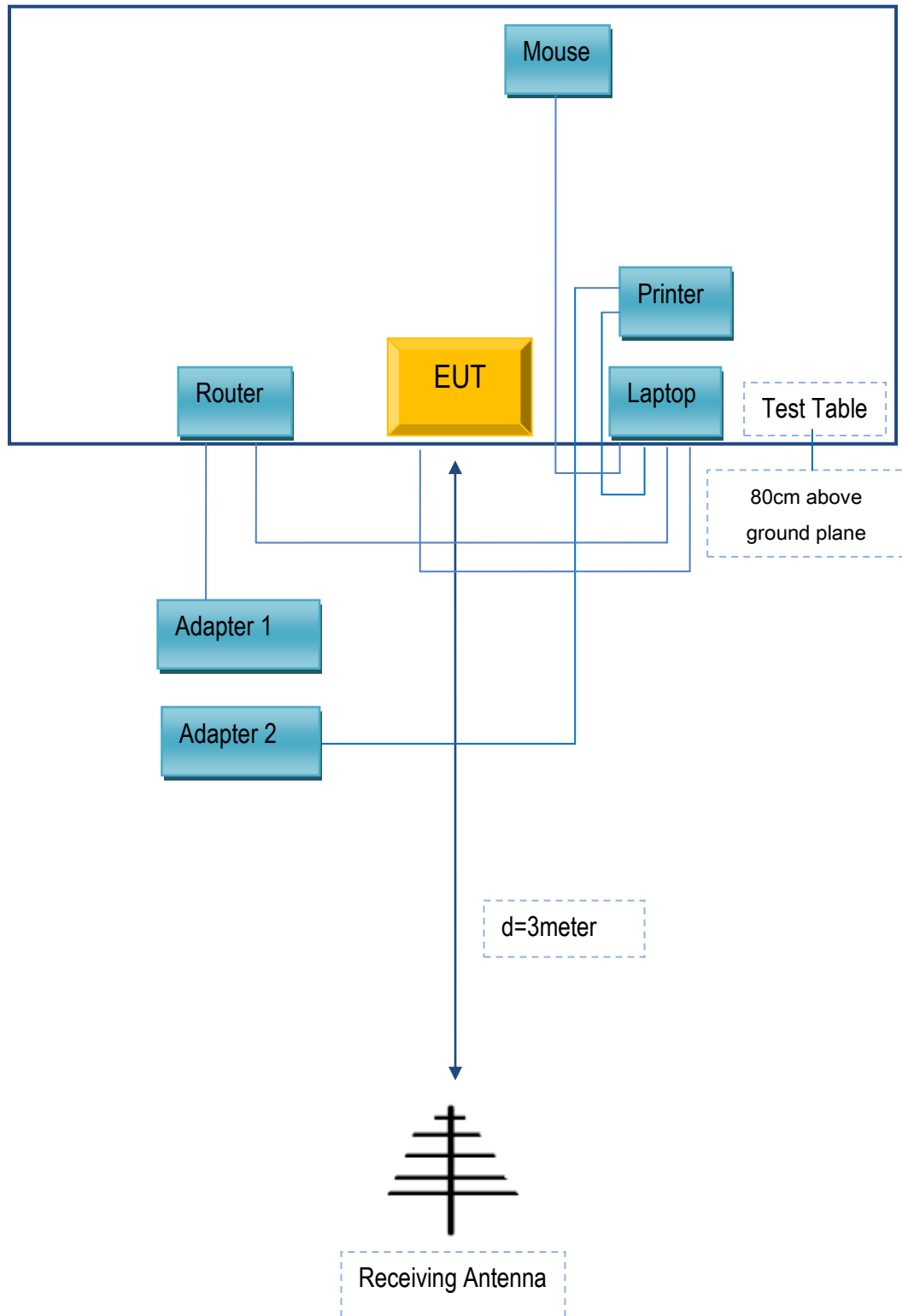
## Annex C. TEST SETUP AND SUPPORTING EQUIPMENT

### Annex C.ii. TEST SET UP BLOCK

Block Configuration Diagram for Conducted Emissions



### Block Configuration Diagram for Radiated Emissions





## Annex C. ii. SUPPORTING EQUIPMENT DESCRIPTION

The following is a description of supporting equipment and details of cables used with the EUT.

### Supporting Equipment:

Manufacturer	Equipment Description	Model	Serial No
Lenovo	Laptop	E40	LR-1EHRX
GOLDWEB	Router	R102	1202032094
Lenovo	AC Adapter	42T4416	21D9JU
HP	Printer	VCVRA-1003	CN36M19JWX
DELL	Mouse	E100	912NMTUT41481
BULL	Socket	GN-403	GN201203

### Supporting Cable:

Cable type	Shield Type	Ferrite Core	Length	Serial No
USB Cable	Un-shielding	No	2m	JX120051274
USB Cable	Un-shielding	No	2m	CBA3000AH0C1
RJ45 Cable	Un-shielding	No	2m	KX156327541
Router Power cable	Un-shielding	No	2m	13274630Z
Printer Power cable	Un-shielding	No	2m	127581031
Power Cable	Un-shielding	No	0.8m	GT211032

Test Report	17070341-FCC-E-V1
Page	39 of 40

**Annex D. User Manual / Block Diagram / Schematics / Partlist**

Please see the attachment

## Annex E. DECLARATION OF SIMILARITY

N/A