

FCC TEST REPORT

Product Name: Mobile Phone
Trade Mark: BLU
Model No.: STUDIO X8 HD
Report Number: 181213004RFM-1
Test Standards: FCC 47 CFR Part 22 Subpart H
 FCC 47 CFR Part 24 Subpart E
 FCC 47 CFR Part 27
 FCC 47 CFR Part 2
FCC ID: YHLBLUSTX8HD2
Test Result: PASS
Date of Issue: January 14, 2019

Prepared for:

BLU Products, Inc.
10814 NW 33rd St # 100 Doral, FL 33172

Prepared by:

Shenzhen UnionTrust Quality and Technology Co., Ltd.
16/F, Block A, Building 6, Baoneng Science and Technology Park,
Qingxiang Road No.1, Longhua New District, Shenzhen, China
TEL: +86-755-2823 0888
FAX: +86-755-2823 0886

Tested by: Henry Lu
 Henry Lu

Project Engineer

Reviewed by: Kevin Liang
 Kevin Liang
 Assistant Manager

Approved by: George Luo

George Luo
 General Manager

Date: January 14, 2019



Shenzhen UnionTrust Quality and Technology Co., Ltd.

Version

Version No.	Date	Description
V1.0	January 14, 2019	Original



CONTENTS

1. GENERAL INFORMATION	4
1.1 CLIENT INFORMATION	4
1.2 EUT INFORMATION	4
1.2.1 GENERAL DESCRIPTION OF EUT	4
1.2.2 DESCRIPTION OF ACCESSORIES.....	4
1.3 PRODUCT SPECIFICATION SUBJECTIVE TO THIS STANDARD	5
1.4 DESCRIPTION OF SUPPORT UNITS	6
1.5 TEST LOCATION	6
1.6 TEST FACILITY	6
1.7 DEVIATION FROM STANDARDS	6
1.8 ABNORMALITIES FROM STANDARD CONDITIONS	6
1.9 OTHER INFORMATION REQUESTED BY THE CUSTOMER	7
1.10 MEASUREMENT UNCERTAINTY	7
2. TEST SUMMARY	8
3. EQUIPMENT LIST	10
4. TEST CONFIGURATION	11
4.1 ENVIRONMENTAL CONDITIONS FOR TESTING	11
4.1.1 NORMAL OR EXTREME TEST CONDITIONS	11
4.1.2 RECORD OF NORMAL ENVIRONMENT.....	11
4.2 TEST SETUP	12
4.2.1 FOR RADIATED EMISSIONS TEST SETUP	12
4.2.2 FOR CONDUCTED RF TEST SETUP	14
4.3 TEST CHANNELS	15
4.4 SYSTEM TEST CONFIGURATION	16
4.5 PRE-SCAN	16
5. RADIO TECHNICAL REQUIREMENTS SPECIFICATION	19
5.1 REFERENCE DOCUMENTS FOR TESTING	19
5.2 EFFECTIVE RADIATED POWER (ERP)	19
5.3 CONDUCTED OUTPUT POWER	21
5.4 PEAK-TO-AVERAGE RATIO	22
5.5 99%&26dB BANDWIDTH	29
5.6 BAND EDGE AT ANTENNA TERMINALS	34
5.7 SPURIOUS EMISSIONS AT ANTENNA TERMINALS	37
5.8 FIELD STRENGTH OF SPURIOUS RADIATION	41
5.8.1 RADIATED EMISSION TEST DATA (30 MHZ TO 1 GHZ)	42
5.8.2 RADIATED EMISSION TEST DATA (ABOVE 1GHZ).....	52
5.9 FREQUENCY STABILITY	60
APPENDIX 1 PHOTOS OF TEST SETUP	62
APPENDIX 2 PHOTOS OF EUT CONSTRUCTIONAL DETAILS	63

1. GENERAL INFORMATION

1.1 CLIENT INFORMATION

Applicant:	BLU Products, Inc.
Address of Applicant:	10814 NW 33rd St # 100 Doral, FL 33172
Manufacturer:	BLU Products, Inc.
Address of Manufacturer:	10814 NW 33rd St # 100 Doral, FL 33172

1.2 EUT INFORMATION

1.2.1 General Description of EUT

Product Name:	Mobile Phone	
Model No.:	STUDIO X8 HD	
Trade Mark:	BLU	
DUT Stage:	Identical Prototype	
EUT Supports Function:	GSM Bands:	GSM850/1900
	UTRA Bands:	Band II/ Band IV/ Band V
	2.4 GHz ISM Band:	IEEE 802.11b/g/n Bluetooth V4.0
Sample Received Date:	December 13, 2018	
Sample Tested Date:	December 13, 2018 to January 2, 2019	

1.2.2 Description of Accessories

Adapter	
Trade Mark:	BLU
Model No.:	US-WT-0700
Input:	100-240 V~50/60 Hz 0.2 A
Output:	5.0 V --- 0.7 A

Battery	
Trade Mark:	BLU
Model No.:	C765539200L
Battery Type:	Lithium-ion Rechargeable Battery
Rated Voltage:	3.8 Vdc
Rated Capacity:	2000 mAh

Cable	
Description:	USB Micro-B Plug Cable
Cable Type:	Unshielded without ferrite
Length:	1.0 Meter

1.3 PRODUCT SPECIFICATION SUBJECTIVE TO THIS STANDARD

Support Networks:	GSM, GPRS, EDGE, WCDMA, HSDPA, HSUPA	
Type of Modulation:	GSM/GPRS:	GMSK
	EDGE:	GMSK, 8PSK
	WCDMA	BPSK
	HSDPA	QPSK
	HSUPA:	QPSK
Frequency Range:	GSM/GPRS/EDGE 850:	824.2-848.8 MHz
	GSM/GPRS/EDGE 1900:	1850.2-1909.8 MHz
	WCDMA Band II:	1852.4-1907.6 MHz
	WCDMA Band IV:	1712.4-1752.6 MHz
	WCDMA Band V:	826.4-846.6 MHz
Max RF Output Power:	GSM/GPRS 850:	28.05dBm
	EDGE 850:	27.98dBm
	GSM/GPRS 1900:	28.22dBm
	EDGE 1900:	28.18dBm
	WCDMA Band II:	20.88dBm
	WCDMA Band IV:	20.38dBm
	WCDMA Band V:	18.52dBm
Type of Emission:	GSM/GPRS 850:	245KGXW
	EDGE 850:	245KG7W
	GSM/GPRS 1900:	246KGXW
	EDGE 1900:	246KG7W
	WCDMA Band II:	4M16F9W
	WCDMA Band IV:	4M17F9W
	WCDMA Band V:	4M16F9W
IEMI:	Radiation: 869966026284628,869966026284643	
	Conducted: 869966026284626,869966026284641	
Antenna Type:	IFA Antenna	
Antenna Gain:	GSM 850:	-1.2 dBi
	GSM 1900:	-1.4 dBi
	WCDMA Band II:	-1.4 dBi
	WCDMA Band IV:	-1.5 dBi
	WCDMA Band V:	-1.2 dBi
GPRS/EDGE Class:	Class 33	
Normal Test Voltage:	3.8 Vdc	
Extreme Test Voltage:	3.5 to 4.4Vdc	
Extreme Test Temperature:	-30 °C to +50 °C	

1.4 DESCRIPTION OF SUPPORT UNITS

The EUT has been tested with associated equipment below.

1) Support Equipment

Description	Manufacturer	Model No.	Serial Number	Supplied by
-	-	-	-	-

2) Support Cable

Cable No.	Description	Connector	Length	Supplied by
1	Antenna Cable	SMA	0.30 Meter	UnionTrust

1.5 TEST LOCATION

Shenzhen UnionTrust Quality and Technology Co., Ltd.

Address: 16/F, Block A, Building 6, Baoneng Science and Technology Park, Qingxiang Road No.1, Longhua New District, Shenzhen, China 518109

Telephone: +86 (0) 755 2823 0888

Fax: +86 (0) 755 2823 0886

1.6 TEST FACILITY

The test facility is recognized, certified, or accredited by the following organizations:

CNAS-Lab Code: L9069

The measuring equipment utilized to perform the tests documented in this report has been calibrated once a year or in accordance with the manufacturer's recommendations, and is traceable under the ISO/IEC/EN 17025 to international or national standards. Equipment has been calibrated by accredited calibration laboratories.

IC-Registration No.: 21600-1

The 3m Semi-anechoic chamber of Shenzhen UnionTrust Quality and Technology Co., Ltd. has been registered by Certification and Engineering Bureau of Industry Canada for radio equipment testing with Registration No.: 21600-1.

A2LA-Lab Certificate No.: 4312.01

Shenzhen UnionTrust Quality and Technology Co., Ltd. has been accredited by A2LA for technical competence in the field of electrical testing, and proved to be in compliance with ISO/IEC 17025: 2005 General Requirements for the Competence of Testing and Calibration Laboratories and any additional program requirements in the identified field of testing.

FCC Accredited Lab.

Designation Number: CN1194

Test Firm Registration Number: 259480

1.7 DEVIATION FROM STANDARDS

None.

1.8 ABNORMALITIES FROM STANDARD CONDITIONS

None.

Shenzhen UnionTrust Quality and Technology Co., Ltd.

Address: 16/F, Block A, Building 6, Baoneng Science and Technology Park, Qingxiang Road No.1, Longhua New District, Shenzhen, China

Tel: +86-755-28230888

Fax: +86-755-28230886

E-mail: info@uttlab.com

[Http://www.uttlab.com](http://www.uttlab.com)

1.9 OTHER INFORMATION REQUESTED BY THE CUSTOMER

None.

1.10 MEASUREMENT UNCERTAINTY

Where relevant, the following measurement uncertainty levels have been estimated for tests performed on the Product as specified in CISPR 16-4-2. This uncertainty represents an expanded uncertainty expressed at approximately the 95% confidence level using a coverage factor of k=2.

No.	Item	Measurement Uncertainty
1	Conducted emission 9KHz-150KHz	±3.8 dB
2	Conducted emission 150KHz-30MHz	±3.4 dB
3	Radiated emission 9KHz-30MHz	±4.9 dB
4	Radiated emission 30MHz-1GHz	±4.7 dB
5	Radiated emission 1GHz-18GHz	±5.1 dB
6	Radiated emission 18GHz-26GHz	±5.2 dB
7	Radiated emission 26GHz-40GHz	±5.2 dB

2. TEST SUMMARY

FCC 47 CFR Part 22 Subpart H Test Cases			
Test Item	Test Requirement	Test Method	Result
Effective Radiated Power (ERP)	FCC 47 CFR Part 2.1046(a) & FCC 47 CFR Part 22.913(a)	ANSI/TIA-603-E-2016 & KDB 971168 D01v03r01	PASS
Conducted Output Power	FCC 47 CFR Part 2.1046(a) & FCC 47 CFR Part 22.913(a)	ANSI/TIA-603-E-2016 & KDB 971168 D01v03r01	PASS
Peak-to-average ratio	FCC 47 CFR Part 22.913(a)	ANSI/TIA-603-E-2016 & KDB 971168 D01v03r01	PASS
99%&26dB Bandwidth	FCC 47 CFR Part 2.1049(h)	ANSI/TIA-603-E-2016 & KDB 971168 D01v03r01	PASS
Band Edge at antenna terminals	FCC 47 CFR Part 2.1051 & FCC 47 CFR Part 22.917(a)	ANSI/TIA-603-E-2016 & KDB 971168 D01v03r01	PASS
Spurious emissions at antenna terminals	FCC 47 CFR Part 2.1051 & FCC 47 CFR Part 22.917(a)(b)	ANSI/TIA-603-E-2016 & KDB 971168 D01v03r01	PASS
Field strength of spurious radiation	FCC 47 CFR Part 2.1053 & FCC 47 CFR Part 22.917(a)(b)	ANSI/TIA-603-E-2016 & KDB 971168 D01v03r01	PASS
Frequency stability	FCC 47 CFR Part 2.1055 & FCC 47 CFR Part 22.355	ANSI/TIA-603-E-2016 & KDB 971168 D01v03r01	PASS
Note:			
1) N/A: In this whole report not application.			

FCC 47 CFR Part 24 Subpart E Test Cases			
Test Item	Test Requirement	Test Method	Result
Equivalent Isotropic Radiated Power (EIRP)	FCC 47 CFR Part 2.1046(a) & FCC 47 CFR Part 24.232(c)	ANSI/TIA-603-E-2016 & KDB 971168 D01v03r01	PASS
Conducted Output Power	FCC 47 CFR Part 2.1046(a) & FCC 47 CFR Part 24.232(c)	ANSI/TIA-603-E-2016 & KDB 971168 D01v03r01	PASS
Peak-to-average ratio	FCC 47 CFR Part 24.232(d)	KDB 971168 D01v03r01	PASS
99%&26dB Bandwidth	FCC 47 CFR Part 2.1049(h) & FCC 47 CFR Part 24.238(b)	ANSI/TIA-603-E-2016 & KDB 971168 D01v03r01	PASS
Band Edge at antenna terminals	FCC 47 CFR Part 2.1051 & FCC 47 CFR Part 24.238(a)	ANSI/TIA-603-E-2016 & KDB 971168 D01v03r01	PASS
Spurious emissions at antenna terminals	FCC 47 CFR Part 2.1051 & FCC 47 CFR Part 24.238(a)(b)	ANSI/TIA-603-E-2016 & KDB 971168 D01v03r01	PASS
Field strength of spurious radiation	FCC 47 CFR Part 2.1053 & FCC 47 CFR Part 24.238(a)(b)	ANSI/TIA-603-E-2016 & KDB 971168 D01v03r01	PASS
Frequency stability	FCC 47 CFR Part 2.1055 & FCC 47 CFR Part 24.235	ANSI/TIA-603-E-2016 & KDB 971168 D01v03r01	PASS
Note:			
1) N/A: In this whole report not application.			

FCC 47 CFR Part 27 Test Cases (WCDMA Band IV)			
Test Item	Test Requirement	Test Method	Result
Equivalent Isotropic Radiated Power (EIRP)	FCC 47 CFR Part 2.1046(a) & FCC 47 CFR Part 27.50(d)(4)	ANSI/TIA-603-E-2016 & KDB 971168 D01v03r01	PASS
Conducted Output Power	FCC 47 CFR Part 2.1046(a) & FCC 47 CFR Part 27.50(d)(4)	ANSI/TIA-603-E-2016 & KDB 971168 D01v03r01	PASS
Peak-to-average ratio	FCC 47 CFR Part 27.50(d)(5)	KDB 971168 D01v03r01	PASS
99%&26dB Bandwidth	FCC 47 CFR Part 2.1049(h) & FCC 47 CFR Part 27.53(h)	ANSI/TIA-603-E-2016 & KDB 971168 D01v03r01	PASS
Band Edge at antenna terminals	FCC 47 CFR Part 27.53(h)(1)	ANSI/TIA-603-E-2016 & KDB 971168 D01v03r01	PASS
Spurious emissions at antenna terminals	FCC 47 CFR Part 2.1051 & FCC 47 CFR Part 27.53(h)	ANSI/TIA-603-E-2016 & KDB 971168 D01v03r01	PASS
Field strength of spurious radiation	FCC 47 CFR Part 2.1053 & FCC 47 CFR Part 27.53(h)	ANSI/TIA-603-E-2016 & KDB 971168 D01v03r01	PASS
Frequency stability	FCC 47 CFR Part 2.1055 & FCC 47 CFR Part 27.54	ANSI/TIA-603-E-2016 & KDB 971168 D01v03r01	PASS

3. EQUIPMENT LIST

Radiated Emission Test Equipment List						
Used	Equipment	Manufacturer	Model No.	Serial Number	Cal. date (mm dd, yyyy)	Cal. Due date (mm dd, yyyy)
<input checked="" type="checkbox"/>	3M Chamber & Accessory Equipment	ETS-LINDGREN	3M	N/A	Dec. 03, 2018	Dec. 03, 2021
<input checked="" type="checkbox"/>	Receiver	R&S	ESIB26	100114	Nov. 24, 2018	Nov. 24, 2019
<input checked="" type="checkbox"/>	Loop Antenna	ETS-LINDGREN	6502	00202525	Dec. 03, 2018	Dec. 03, 2019
<input checked="" type="checkbox"/>	Broadband Antenna	ETS-LINDGREN	3142E	00201566	Dec. 08, 2018	Dec. 08, 2019
<input checked="" type="checkbox"/>	6dB Attenuator	Talent	RA6A5-N-18	18103001	Dec. 08, 2018	Dec. 08, 2019
<input checked="" type="checkbox"/>	Preamplifier	HP	8447F	2805A02960	Nov. 24, 2018	Nov. 24, 2019
<input checked="" type="checkbox"/>	Broadband Antenna (Pre-amplifier)	ETS-LINDGREN	3142E-PA	00201891	May 19, 2018	May 19, 2019
<input checked="" type="checkbox"/>	6dB Attenuator	Talent	RA6A5-N-18	18103002	Nov. 24, 2018	Nov. 24, 2019
<input checked="" type="checkbox"/>	Horn Antenna	ETS-LINDGREN	3117	00164202	Dec. 08, 2018	Dec. 08, 2019
<input checked="" type="checkbox"/>	Horn Antenna (Pre-amplifier)	ETS-LINDGREN	3117-PA	00201874	May 22, 2018	May 22, 2019
<input checked="" type="checkbox"/>	Horn Antenna	ETS-LINDGREN	3116C	00200180	May 20, 2018	May 20, 2019
<input checked="" type="checkbox"/>	Multi device Controller	ETS-LINDGREN	7006-001	00160105	N/A	N/A
<input checked="" type="checkbox"/>	Highpass Filter (1.2GHz~18GHz)	Micro-Tronics	HPM50108	G552	Nov. 29, 2018	Nov. 29, 2019
<input checked="" type="checkbox"/>	Highpass Filter (3GHz~18GHz)	Micro-Tronics	HPM50117	G005	Nov. 29, 2018	Nov. 29, 2019
<input checked="" type="checkbox"/>	Test Software	Audix	e3	Software Version: 9.160333		

RF Test Equipment List						
Used	Equipment	Manufacturer	Model No.	Serial Number	Cal. date (mm dd, yyyy)	Cal. Due date (mm dd, yyyy)
<input checked="" type="checkbox"/>	Receiver	R&S	ESR7	1316.3003K07-101181-K3	Nov. 24, 2018	Nov. 24, 2019
<input checked="" type="checkbox"/>	EXA Spectrum Analyzer	KEYSIGHT	N9010A	MY51440197	Nov. 24, 2018	Nov. 24, 2019
<input checked="" type="checkbox"/>	EXA Spectrum Analyzer	KEYSIGHT	N9010B	MY57110211	Nov. 24, 2018	Nov. 24, 2019
<input checked="" type="checkbox"/>	Wideband Radio Communication Tester	R&S	CMW500	116254	Jun. 07, 2018	Jun. 07, 2019
<input checked="" type="checkbox"/>	DC Source	KIKUSUI	PWR400L	LK003024	Sep. 18, 2018	Sep. 18, 2019
<input checked="" type="checkbox"/>	Temp & Humidity chamber	Votisch	VT4002	58566133290020	Jun. 05, 2018	Jun. 05, 2020

4. TEST CONFIGURATION

4.1 ENVIRONMENTAL CONDITIONS FOR TESTING

4.1.1 Normal or Extreme Test Conditions

Test Environment	Selected Values During Tests		
Test Condition	Ambient		
	Temperature (°C)	Voltage (V)	Relative Humidity (%)
TN/VN	+15 to +35	3.8	20 to 75
TL/VL	-30	3.5	20 to 75
TH/VL	+50	3.5	20 to 75
TL/VH	-30	4.4	20 to 75
TH/VH	+50	4.4	20 to 75

Remark:

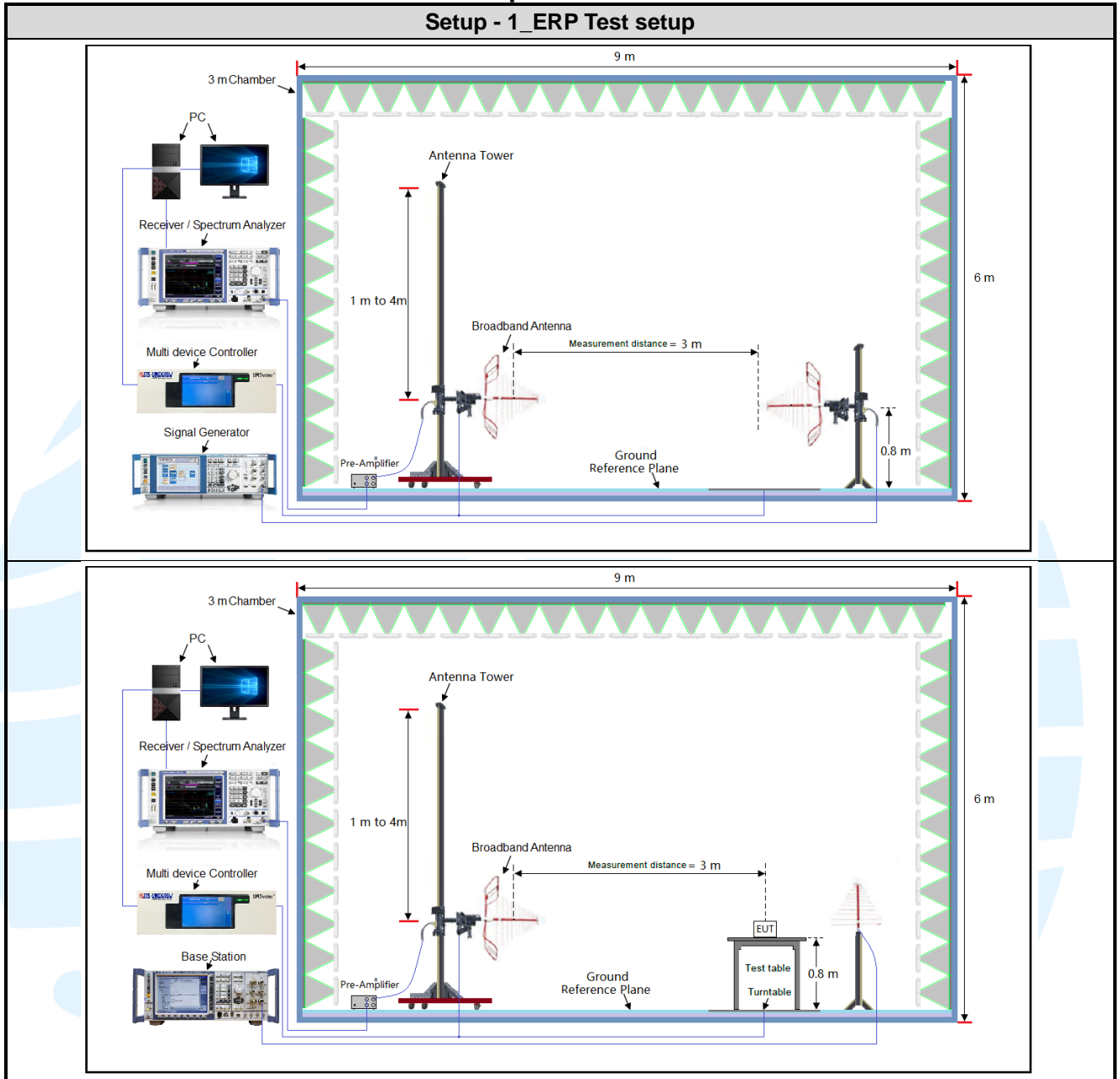
- The EUT just work in such extreme temperature of -30 °C to +50 °C and the extreme voltage of 3.5 V to 4.4 V, so here the EUT is tested in the temperature of -30 °C to +50 °C and the voltage of 3.5 V to 4.4 V.
- VN: Normal Voltage; TN: Normal Temperature;
 TL: Low Extreme Test Temperature; TH: High Extreme Test Temperature;
 VL: Low Extreme Test Voltage; VH: High Extreme Test Voltage.

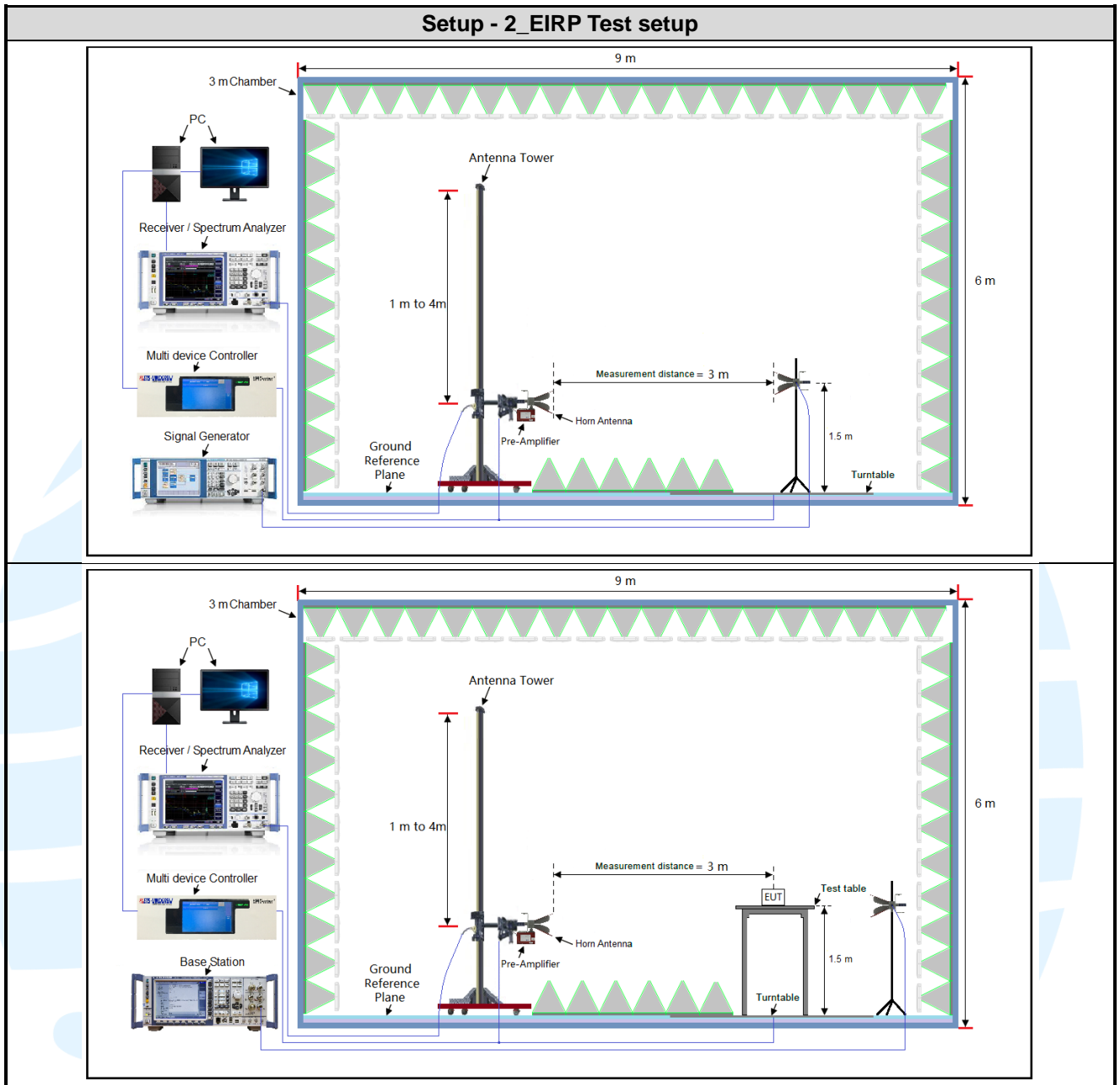
4.1.2 Record of Normal Environment

Test Item	Temperature (°C)	Relative Humidity (%)	Pressure (kPa)	Tested by
Equivalent Isotropic Radiated Power (EIRP)	22.4	47	99.80	Terence Chen
Conducted Output Power	22.4	47	99.80	Terence Chen
Peak-to-average ratio	22.4	47	99.80	Terence Chen
99%&26dB Bandwidth	22.4	47	99.80	Terence Chen
Band Edge at antenna terminals	22.4	47	99.80	Terence Chen
Spurious emissions at antenna terminals	22.4	47	99.80	Terence Chen
Field strength of spurious radiation	24.4	51	100.27	Fire Huo
Frequency stability	22.4	47	99.80	Terence Chen

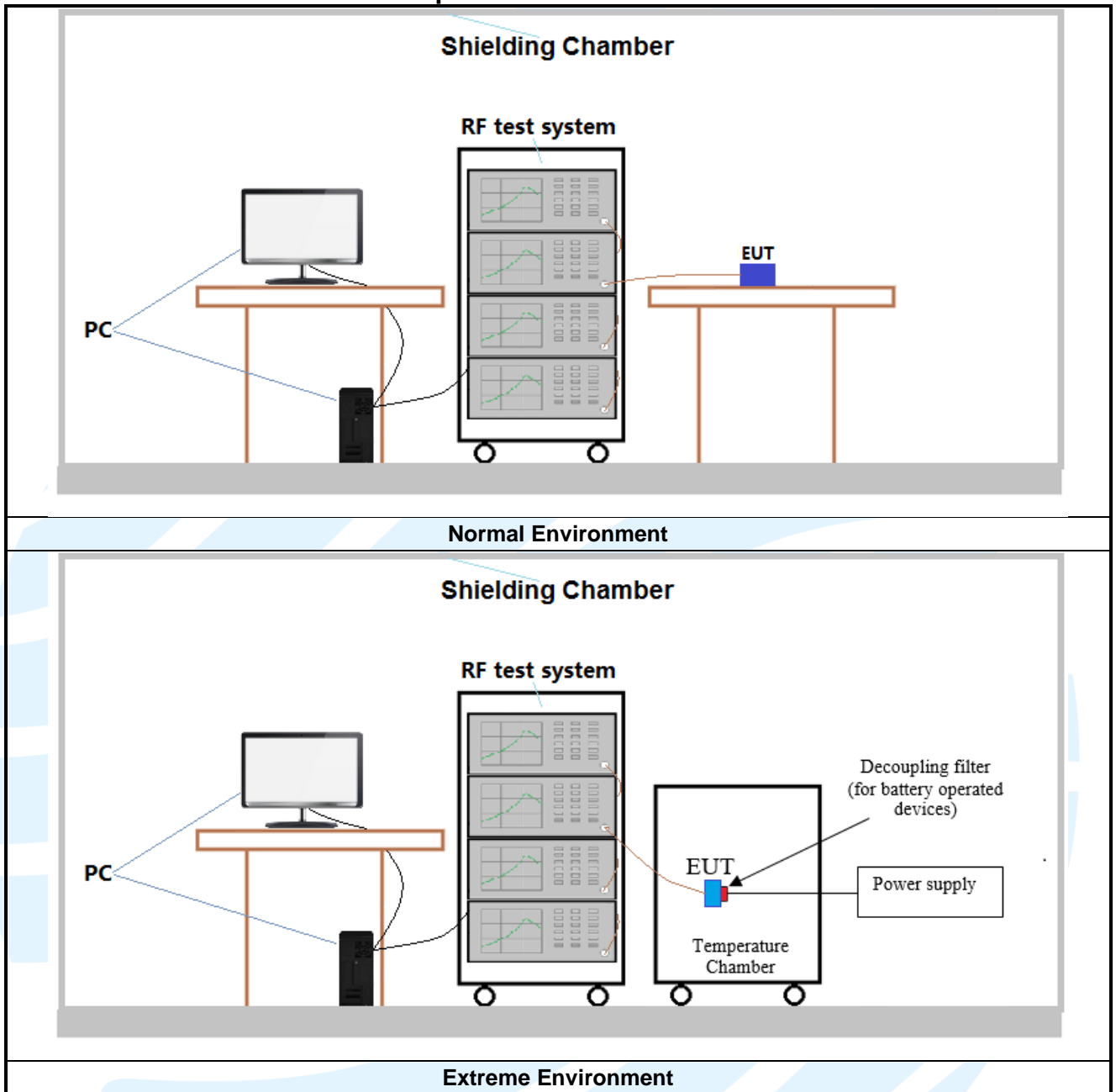
4.2 TEST SETUP

4.2.1 For Radiated Emissions test setup





4.2.2 For Conducted RF test setup



4.3 TEST CHANNELS

Band	Tx/Rx Frequency	RF Channel		
		Low(L)	Middle(M)	High(H)
GSM/GPRS/ EDGE850	Tx (824 MHz ~ 849 MHz)	Channel 128	Channel 190	Channel 251
		824.2 MHz	836.6 MHz	848.8 MHz
WCDMA band V	Tx (824 MHz ~ 849 MHz)	Channel 4132	Channel 4182	Channel 4233
		826.4 MHz	836.4 MHz	846.6 MHz

Band	Tx/Rx Frequency	RF Channel		
		Low(L)	Middle(M)	High(H)
GSM/GPRS/ EDGE1900	Tx (1850 MHz-1910 MHz)	Channel 512	Channel 661	Channel 810
		1850.2 MHz	1880.0 MHz	1909.8 MHz
WCDMA Band II	Tx (1850 MHz-1910 MHz)	Channel 9262	Channel 9400	Channel 9538
		1852.4 MHz	1880.0 MHz	1907.6 MHz

Band	Tx/Rx Frequency	RF Channel		
		Low(L)	Middle(M)	High(H)
WCDMA Band IV	Tx (1710 MHz-1755 MHz)	Channel 1312	Channel 1412	Channel 1513
		1712.4 MHz	1732.4 MHz	1752.6 MHz

4.4 SYSTEM TEST CONFIGURATION

For emissions testing, the equipment under test (EUT) setup to transmit continuously to simplify the measurement methodology. Care was taken to ensure proper power supply voltages during testing. During testing, radiated emission were performed with the EUT set to transmit at the channel with highest output power as worst-case scenario. It was powered by a 3.8Vdc rechargeable Li-on battery. Only the worst case data were recorded in this test report.

Pre-Scan has been conducted to determine the worst-case mode from all possible combinations between available modulations, data rates, X/Y/Z axis, and antenna ports. The worst case was found when positioned as the table below.

Band	Mode	Antenna Port	Worst-case axis positioning
GSM 850	1TX	Chain 0	Y axis
GSM 1900	1TX	Chain 0	Y axis
WCDMA Band II	1TX	Chain 0	Y axis
WCDMA Band IV	1TX	Chain 0	Y axis
WCDMA Band V	1TX	Chain 0	Y axis

All readings are extrapolated back to the equivalent three meter reading using inverse scaling with distance. Analyzer resolution is 100 kHz or greater for frequencies below 1000MHz. The resolution is 1 MHz or greater for frequencies above 1000MHz. The spurious emissions more than 20 dB below the permissible value are not reported.

Radiated emission measurement were performed from the lowest radio frequency signal generated in the device which is greater than 9 kHz to the tenth harmonic of the highest fundamental frequency or to 40 GHz, whichever is lower.

4.5 PRE-SCAN

Pre-scan under all rate at lowest middle and highest channel, find the transmitter power as below: SIM 1 Card Conducted transmitter power measurement result.

GSM 850 Maximum Average Power (dBm)			
Channel	128	190	251
Frequency(MHz)	824.2 MHz	836.6 MHz	848.8 MHz
GSM (GMSK, 1Tx-slot)	31.15	31.26	31.40
GPRS (GMSK, 1Tx-slot)	31.07	31.28	31.36
GPRS (GMSK, 2Tx-slot)	30.45	30.68	30.74
GPRS (GMSK, 3Tx-slot)	29.06	29.27	29.36
GPRS (GMSK, 4Tx-slot)	28.05	28.23	28.35
EDGE (8PSK, 1Tx-slot)	31.06	31.26	31.33
EDGE (8PSK, 2Tx-slot)	30.44	30.69	30.68
EDGE (8PSK, 3Tx-slot)	29.06	29.26	29.35
EDGE (8PSK, 4Tx-slot)	28.07	28.22	28.32

GSM 1900 Maximum Average Power (dBm)			
Channel	512	661	810
Frequency(MHz)	1850.2 MHz	1880.0 MHz	1909.8 MHz
GSM (GMSK, 1Tx-slot)	29.10	29.40	29.62
GPRS (GMSK, 1Tx-slot)	29.12	29.46	29.61
GPRS (GMSK, 2Tx-slot)	28.23	28.57	28.72
GPRS (GMSK, 3Tx-slot)	26.51	26.81	26.95
GPRS (GMSK, 4Tx-slot)	25.69	25.97	26.19
EDGE (8PSK, 1Tx-slot)	29.14	29.44	29.58
EDGE (8PSK, 2Tx-slot)	28.25	28.55	28.68
EDGE (8PSK, 3Tx-slot)	26.52	26.81	26.92
EDGE (8PSK, 4Tx-slot)	25.71	25.98	26.12

WCDMA Band II Maximum Average Power (dBm)			
Channel	9262	9400	9538
Frequency(MHz)	1852.4 MHz	1880.0 MHz	1907.6 MHz
RMC 12.2K	22.00	22.28	22.07
HSDPA Subtest-1	21.00	21.34	21.15
HSDPA Subtest-2	21.03	21.23	21.09
HSDPA Subtest-3	20.54	20.76	20.61
HSDPA Subtest-4	20.56	20.73	20.59
HSUPA Subtest-1	19.15	19.41	19.32
HSUPA Subtest-2	18.14	18.48	18.46
HSUPA Subtest-3	20.12	20.52	20.38
HSUPA Subtest-4	18.53	19.00	18.98
HSUPA Subtest-5	20.57	20.87	20.74

WCDMA Band IV Maximum Average Power (dBm)			
Channel	1312	1412	1513
Frequency(MHz)	1712.4 MHz	1732.4 MHz	1752.6 MHz
RMC 12.2K	21.58	21.87	21.55
HSDPA Subtest-1	21.54	21.86	21.59
HSDPA Subtest-2	21.52	21.82	21.56
HSDPA Subtest-3	21.04	21.35	21.06
HSDPA Subtest-4	21.01	21.32	21.04
HSUPA Subtest-1	19.57	19.94	19.55
HSUPA Subtest-2	19.61	19.91	19.55
HSUPA Subtest-3	20.61	20.93	20.59
HSUPA Subtest-4	19.09	19.41	19.03
HSUPA Subtest-5	21.09	21.42	21.04

WCDMA Band V Maximum Average Power (dBm)			
Channel	4132	4182	4233
Frequency(MHz)	826.4 MHz	836.4 MHz	846.6 MHz
RMC 12.2K	21.52	21.36	21.88
HSDPA Subtest-1	21.51	21.32	21.75
HSDPA Subtest-2	21.48	21.29	21.72
HSDPA Subtest-3	21.00	20.82	21.28
HSDPA Subtest-4	21.04	20.79	21.24
HSUPA Subtest-1	19.45	19.38	19.95
HSUPA Subtest-2	19.41	19.38	19.94
HSUPA Subtest-3	20.45	20.43	20.98
HSUPA Subtest-4	18.89	18.84	19.48
HSUPA Subtest-5	21.03	20.91	21.39

Pre-scan all bandwidth and RB, find worse case mode are chosen to the report, the worse mode applicability and tested channel detail as below:

Band	Radiated	Conducted
GSM/GPRS/EDGE 850/1900	1) GSM (GMSK, 1Tx-slot) Link 2) GPRS (GMSK, 1Tx-slot) Link 3) EDGE (8PSK, 1Tx-slot) Link	1) GSM (GMSK, 1Tx-slot) Link 2) GPRS (GMSK, 1Tx-slot) Link 3) EDGE (8PSK, 1Tx-slot) Link
WCDMA Band II/IVV	RMC 12.2Kbps Link	RMC 12.2Kbps Link

5. RADIO TECHNICAL REQUIREMENTS SPECIFICATION

5.1 REFERENCE DOCUMENTS FOR TESTING

No.	Identity	Document Title
1	FCC 47 CFR Part 2 Subpart J	Frequency allocations and radio treaty matters; general rules and regulations
2	FCC 47 CFR Part 22 Subpart H	Cellular Radiotelephone Service
3	FCC 47 CFR Part 27	Miscellaneous Wireless Communications Services
4	FCC 47 CFR Part 24 Subpart E	PART 24 – PERSONAL COMMUNICATIONS SERVICES Subpart E – Broadband PCS
5	ANSI/TIA-603-E-2016	Land Mobile FM or PM Communications Equipment Measurement and Performance Standards
6	KDB 971168 D01	KDB 971168 D01 Power Meas License Digital Systems v03r01

5.2 EFFECTIVE RADIATED POWER (ERP)

Test Requirement: FCC 47 CFR Part 2.1046(a),
FCC 47 CFR Part 22.913(a),
FCC 47 CFR Part 24.232(c)

Test Method: KDB 971168 D01v03r01& ANSI/TIA-603-E-2016

Limit:

FCC 47 CFR Part 22.913(a)

The ERP of mobile transmitters and auxiliary test transmitters must not exceed 7 Watts.

FCC 47 CFR Part 24.232(c)

Mobile and portable stations are limited to 2 watts EIRP.

FCC 47 CFR Part 27.50(d)(4)

Fixed, mobile, and portable (hand-held) stations operating in the 1710-1755 MHz band and mobile and portable stations operating in the 1695-1710 MHz and 1755-1780 MHz bands are limited to 1 watt EIRP.

Test Procedure:

Test procedure as below:

- 1) The EUT was powered ON and placed on a 0.8/1.5m high table at a 3 meter semi/fully Anechoic Chamber. The antenna of the transmitter was extended to its maximum length. Modulation mode and the measuring receiver shall be tuned to the frequency of the transmitter under test.
- 2) The EUT was set 3 meters away from the interference-receiving antenna, which was mounted on the top of a variable-height antenna tower.
- 3) The disturbance of the transmitter was maximized on the test receiver display by raising and lowering from 1m to 4m the receive antenna and by rotating through 360° the turntable. After the fundamental emission was maximized, a field strength measurement was made.
- 4) Steps 1) to 3) were performed with the EUT and the receive antenna in both vertical and horizontal polarization.
- 5) The transmitter was then removed and replaced with another antenna. The center of the antenna was approximately at the same location as the center of the transmitter.
- 6) A signal at the disturbance was fed to the substitution antenna by means of a non-radiating cable. With both the substitution and the receive antennas horizontally polarized, the receive antenna was raised and lowered to obtain a maximum reading at the test receiver. The level of the signal generator was adjusted until the measured field strength level in step 3) is obtained for this set of conditions.
- 7) The output power into the substitution antenna was then measured.
- 8) Steps 6) and 7) were repeated with both antennas polarized.
- 9) Calculate power in dBm by the following formula:

$$\text{ERP(dBm)} = \text{Pg(dBm)} - \text{cable loss (dB)} + \text{antenna gain (dBd)}$$

$$\text{EIRP(dBm)} = \text{Pg(dBm)} - \text{cable loss (dB)} + \text{antenna gain (dBi)}$$

$$\text{EIRP} = \text{ERP} + 2.15\text{dB}$$

where:

Pg is the generator output power into the substitution antenna.

- 10) Test the EUT in the lowest channel, the middle channel the Highest channel
- 11) The radiation measurements are performed in X, Y, Z axis positioning for EUT operation mode, and found the Y axis positioning which it is worse case.
- 12) Repeat above procedures until all frequencies measured was complete.

Shenzhen UnionTrust Quality and Technology Co., Ltd.

Address: 16/F, Block A, Building 6, Baoneng Science and Technology Park, Qingxiang Road No.1, Longhua New District, Shenzhen, China

Tel: +86-755-28230888

Fax: +86-755-28230886

E-mail: info@uttlab.com

[Http://www.uttlab.com](http://www.uttlab.com)

Receiver Setup:

Frequency	Detector	RBW	VBW	Remark
30MHz-1GHz	Peak	100kHz	300kHz	Peak
Above 1GHz	Peak	1MHz	3MHz	Peak

Test Setup:

Refer to section 4.2.1 for details.

Instruments Used:

Refer to section 3 for details

Test Mode:

Link mode

Test Results:

Pass

Test Data:

See table below

Maximum ERP (dBm)					
Channel	GSM 850 1Tx-slot	EDGE 850 1Tx-slot	WCDMA Band V RMC 12.2Kbps	Limit (dBm)	Result
Lowest	27.80	27.71	18.23	38.45	Pass
Middle	27.91	27.91	18.52	38.45	Pass
Highest	28.05	27.98	18.20	38.45	Pass

Maximum EIRP (dBm)					
Channel	GSM 1900 1Tx-slot	EDGE 1900 1Tx-slot	WCDMA Band II RMC 12.2Kbps	Limit (dBm)	Result
Lowest	27.70	27.74	20.60	33.01	Pass
Middle	28.00	28.04	20.88	33.01	Pass
Highest	28.22	28.18	20.67	33.01	Pass

Maximum EIRP (dBm)				
Channel	WCDMA Band IV RMC 12.2Kbps		Limit (dBm)	Result
Lowest	20.02		30.00	Pass
Middle	19.86		30.00	Pass
Highest	20.38		30.00	Pass

5.3 CONDUCTED OUTPUT POWER

Test Requirement: FCC 47 CFR Part 2.1046(a),
 FCC 47 CFR Part 22.913(a),
 FCC 47 CFR Part 24.232(c)

Test Method: ANSI/TIA-603-E-2016 & KDB 971168 D01v03r01

Limit:

FCC 47 CFR Part 22.913(a)

The ERP of mobile transmitters and auxiliary test transmitters must not exceed 7 Watts.

FCC 47 CFR Part 24.232(c)

Mobile and portable stations are limited to 2 watts EIRP.

FCC 47 CFR Part 27.50(d)(4)

Fixed, mobile, and portable (hand-held) stations operating in the 1710-1755 MHz band and mobile and portable stations operating in the 1695-1710 MHz and 1755-1780 MHz bands are limited to 1 watt EIRP.

Test Procedure:

The EUT was set up for the maximum power with GSM, GPRS, EDGE, WCDMA, CDMA2000, and LTE link data modulation and link up with simulator. Set the EUT to transmit under low, middle and high channel and record the power level shown on simulator.

Note: The cable loss and attenuator loss were offset into measure device as an amplitude offset.

Test Setup: Refer to section 4.2.2 for details.

Instruments Used: Refer to section 3 for details

Test Mode: Link mode

Test Results: Pass

Test Data: The full result refer to section 4.5 for details.

5.4 PEAK-TO-AVERAGE RATIO

Test Requirement: FCC 47 CFR Part 22.913(a),
 FCC 47 CFR Part 24.232(c),
 FCC 47 CFR Part 27.50(d)(5)

Test Method: KDB 971168 D01v03r01

Limit: In measuring transmissions in this band using an average power technique, the peak-to-average ratio (PAR) of the transmission may not exceed 13 dB

Test Procedure:
 The transmitter output was connected to a calibrated coaxial cable and coupler, the other end of which was connected to a spectrum analyzer.

- a) Set resolution/measurement bandwidth \geq signal's occupied bandwidth
- b) Set the number of counts to a value that stabilizes the measured CCDF curve
- c) Record the maximum PAPR level associated with a probability of 0.1 %

Note: The cable loss and attenuator loss were offset into measure device as an amplitude offset.

Test Setup: Refer to section 4.2.2 for details.

Instruments Used: Refer to section 3 for details

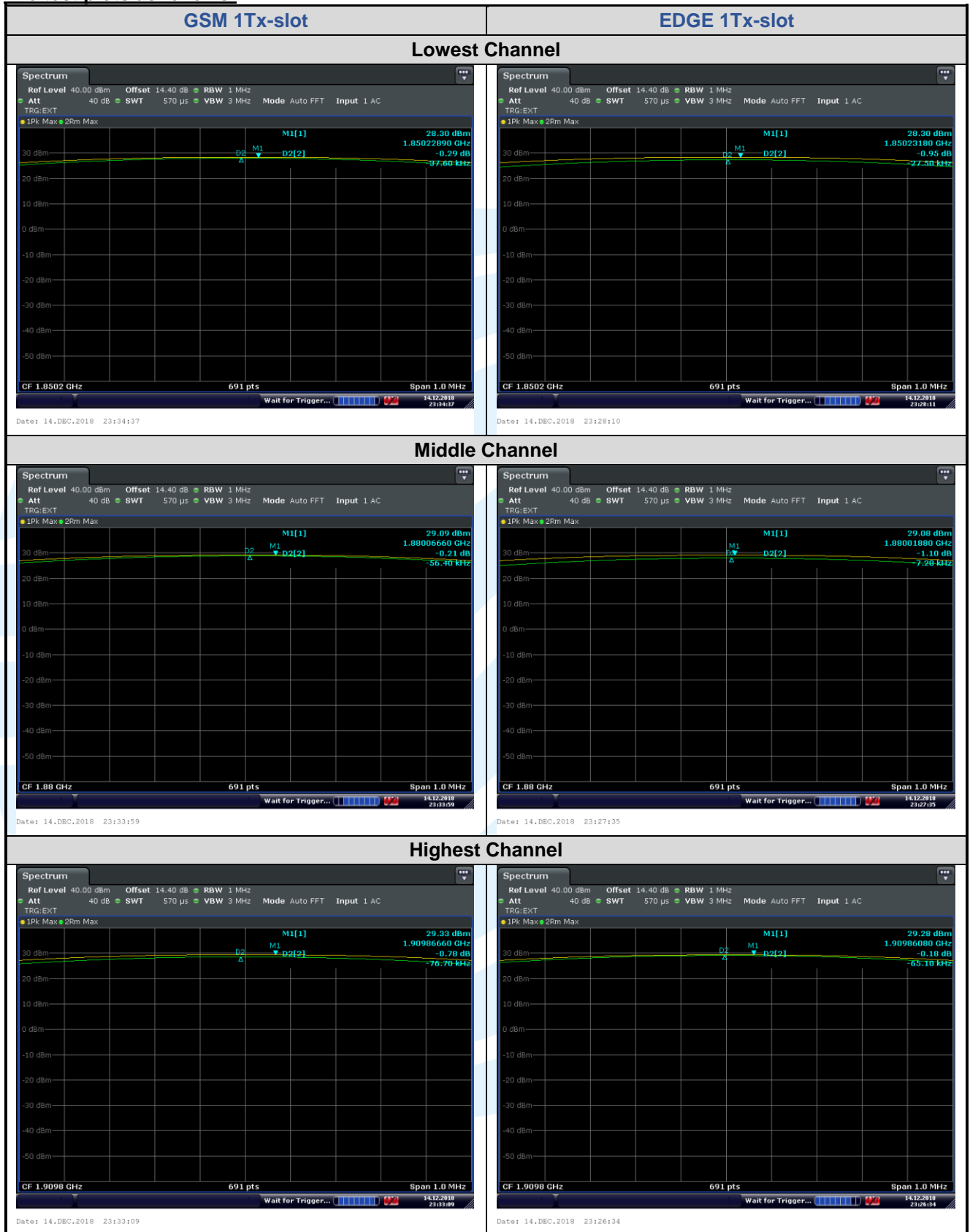
Test Mode: Link mode

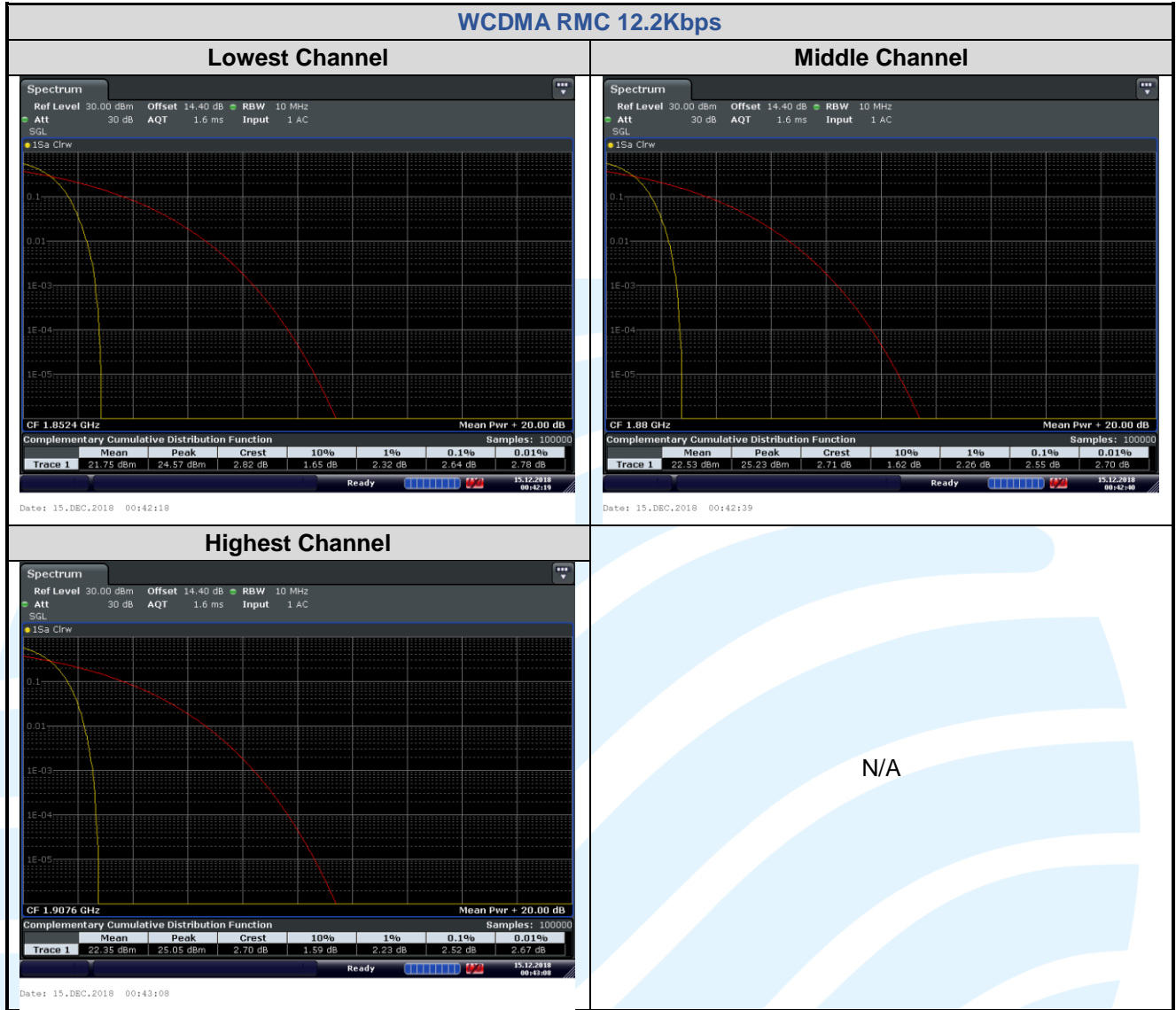
Test Results: Pass

Test Data: See table below

Peak-to-average ratio (dB)					
Channel	GSM 1900 1Tx-slot	EDGE 1900 1Tx-slot	WCDMA Band II RMC 12.2Kbps	Limit (dBm)	Result
Lowest	0.29	0.95	2.64	13	Pass
Middle	0.21	1.10	2.55	13	Pass
Highest	0.78	0.18	2.52	13	Pass

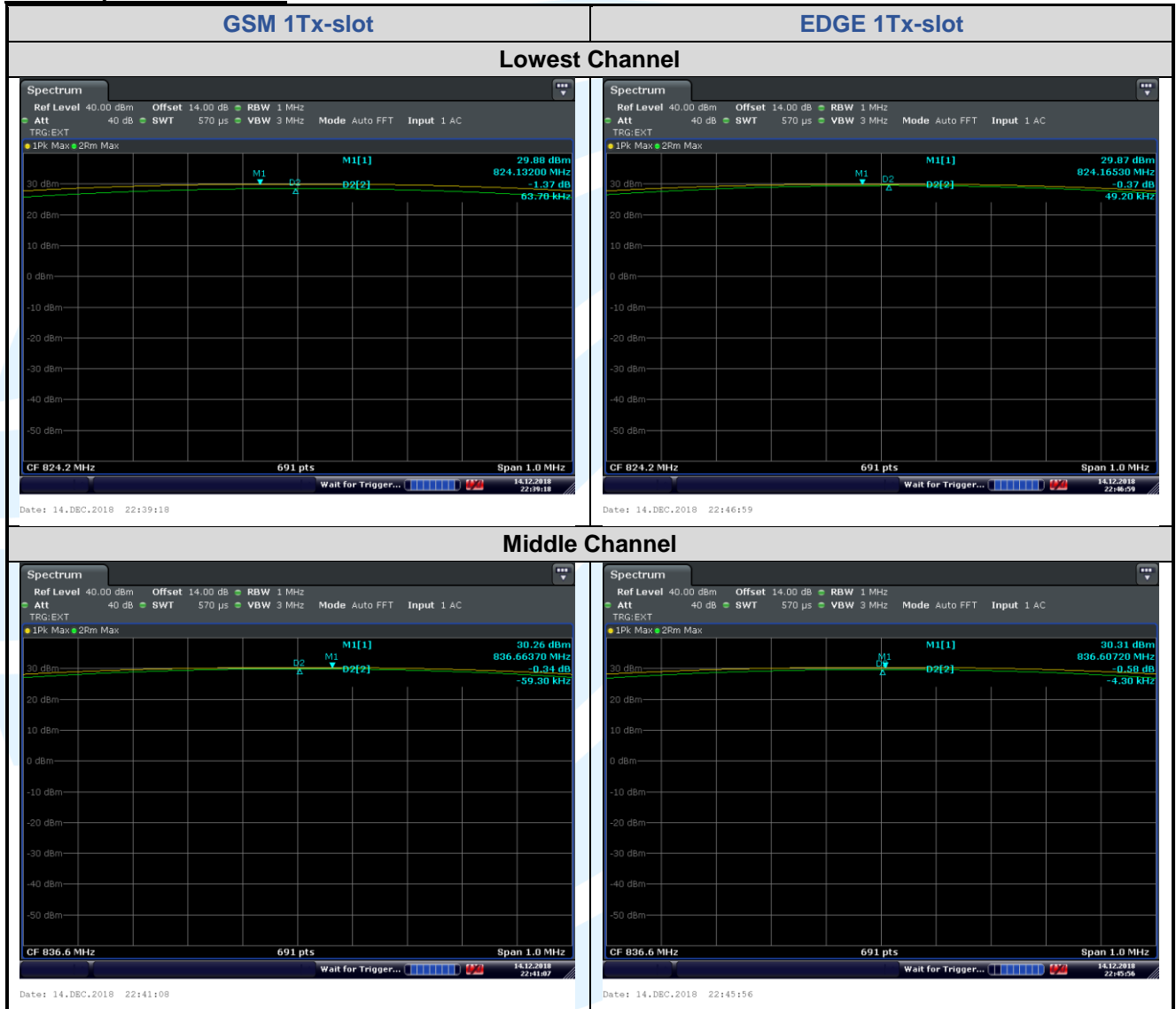
The test plots as follows:



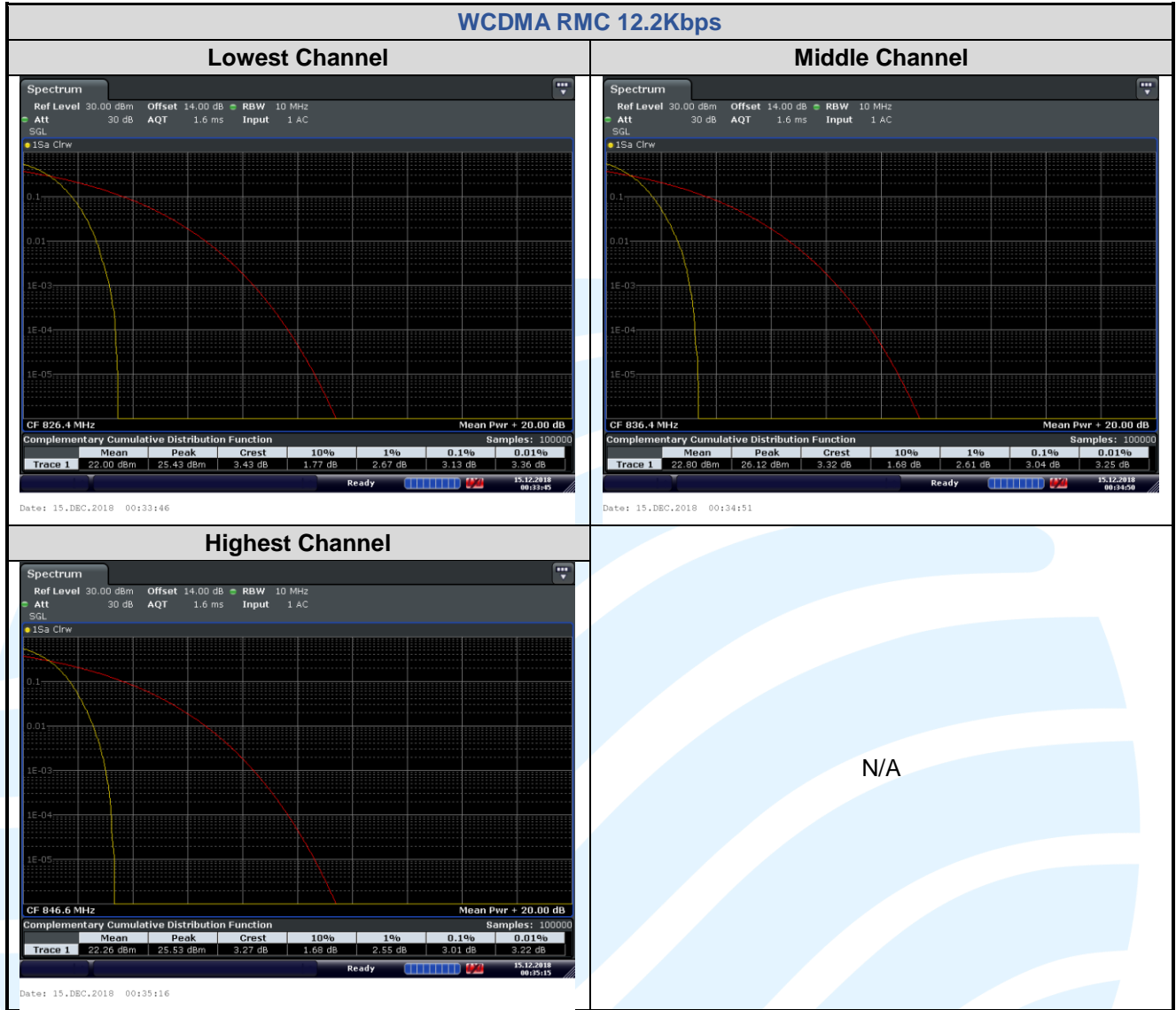


Peak-to-average ratio (dB)					
Channel	GSM 850 1Tx-slot	EDGE 850 1Tx-slot	WCDMA Band V RMC 12.2Kbps	Limit (dBm)	Result
Lowest	1.37	0.37	3.13	13	Pass
Middle	0.34	0.58	3.04	13	Pass
Highest	1.26	1.66	3.01	13	Pass

The test plots as follows:

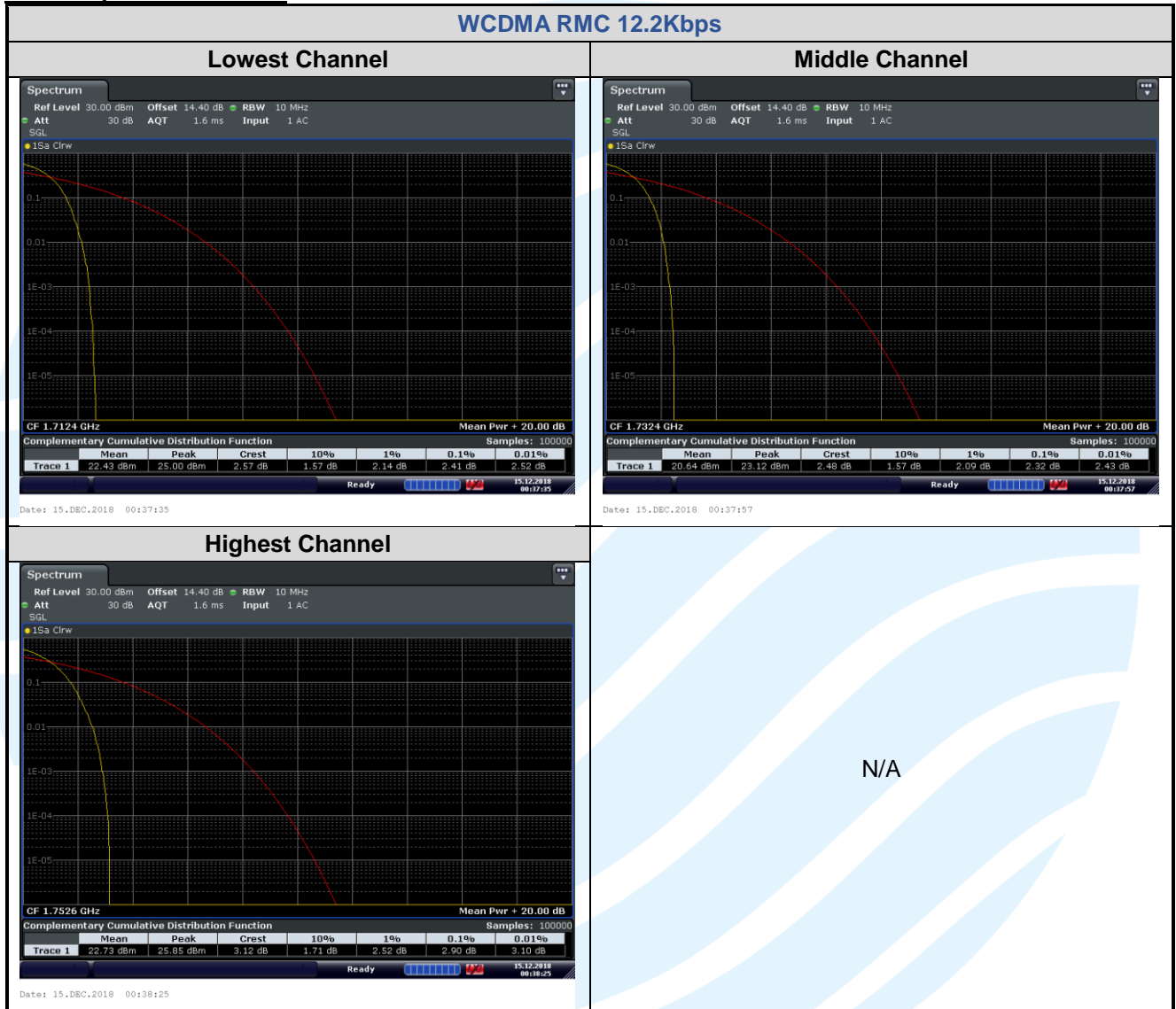






Peak-to-average ratio (dB)			
Channel	WCDMA Band IV RMC 12.2Kbps	Limit (dB)	Result
Lowest	2.41	13	Pass
Middle	2.32	13	Pass
Highest	2.90	13	Pass

The test plots as follows:



5.5 99%&26DB BANDWIDTH

Test Requirement: FCC 47 CFR Part 2.1049(h),
 FCC 47 CFR Part 22.917(b),
 FCC 47 CFR Part 24.238(b),
 FCC 47 CFR Part 27.53(h)

Test Method: ANSI/TIA-603-E-2016 & KDB 971168 D01v03r01

Limit: No Limit

Test Procedure:

The transmitter output was connected to a calibrated coaxial cable and coupler, the other end of which was connected to a spectrum analyzer. The occupied bandwidth was measured with the spectrum analyzer at the low, middle and high channel in each band. The 99% and -26dB bandwidths was also measured and recorded.

Note: The cable loss and attenuator loss were offset into measure device as an amplitude offset.

Test Setup: Refer to section 4.2.2 for details.

Instruments Used: Refer to section 3 for details

Test Mode: Link mode

Test Results: Pass

Test Data: See table below

99% & 26 dB Bandwidth				
Test Mode	Channel	Frequency (MHz)	26 dB BW (kHz)	99% BW (kHz)
GSM 850 1Tx-slot	128	824.2	318.4	245.39
	190	836.6	316.5	243.65
	251	848.8	323.0	244.45
EDGE 850 1Tx-slot	128	824.2	319.1	245.24
	190	836.6	323.2	243.40
	251	848.8	320.2	244.68
GSM 1900 1Tx-slot	512	1850.2	315.7	245.91
	661	1880.0	315.2	245.15
	810	1909.8	316.5	243.96
EDGE 1900 1Tx-slot	512	1850.2	318.0	245.42
	661	1880.0	316.2	244.40
	810	1909.8	318.7	245.66

99% & 26 dB Bandwidth				
Test Mode	Channel	Frequency (MHz)	26 dB BW (MHz)	99% BW (MHz)
WCDMA Band II RMC 12.2Kbps	9262	1852.4	4.689	4.1600
	9400	1880.0	4.684	4.1581
	9538	1907.6	4.710	4.1580
WCDMA Band IV RMC 12.2Kbps	1312	1712.4	4.713	4.1661
	1412	1732.4	4.699	4.1553
	1513	1752.6	4.679	4.1597
WCDMA Band V RMC 12.2Kbps	4132	826.4	4.683	4.1567
	4182	836.4	4.682	4.1391
	4233	846.6	4.684	4.1602

The test plots as follows:

