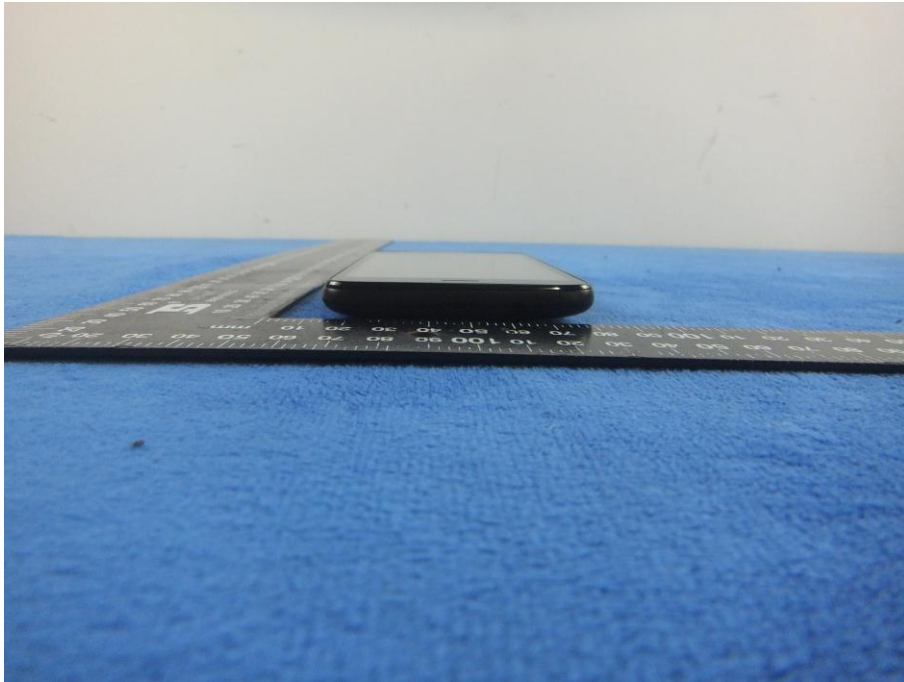
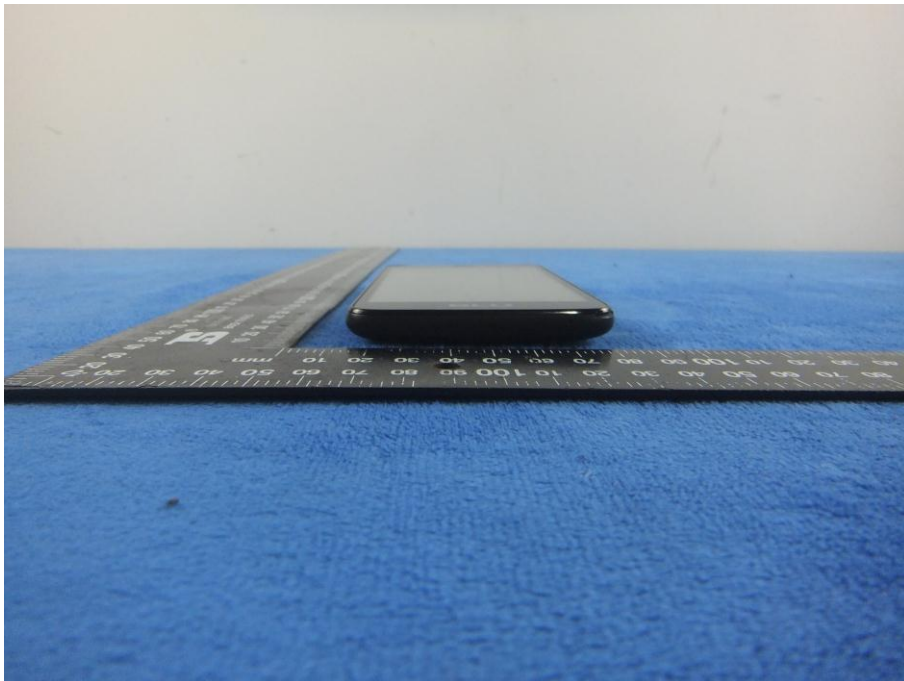


EUT - Top View



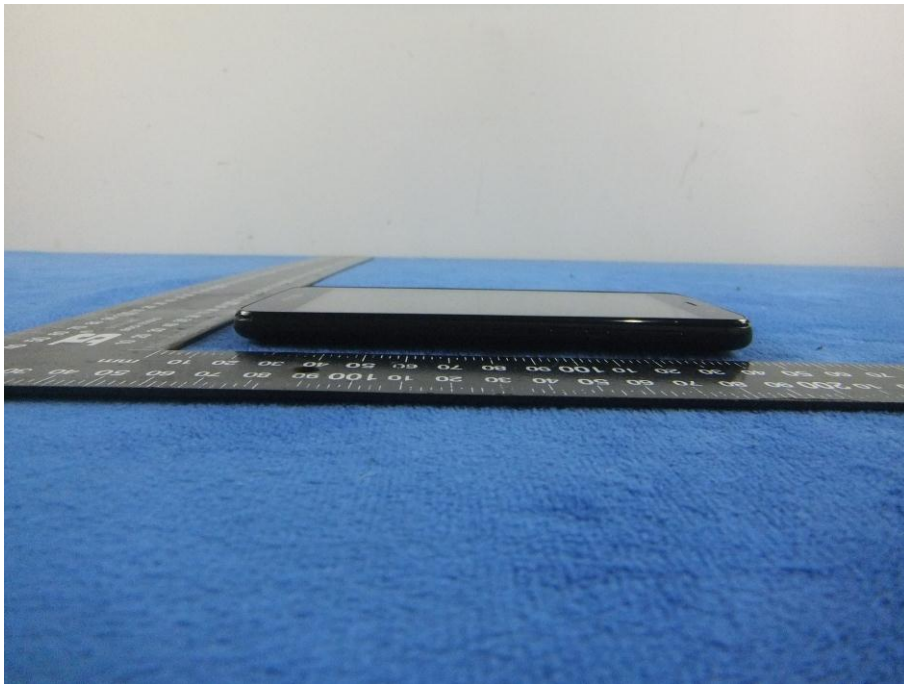
EUT - Bottom View



EUT - Left View



EUT - Right View



Annex B.ii. Photograph: EUT Internal Photo

Cover Off - Top View 1

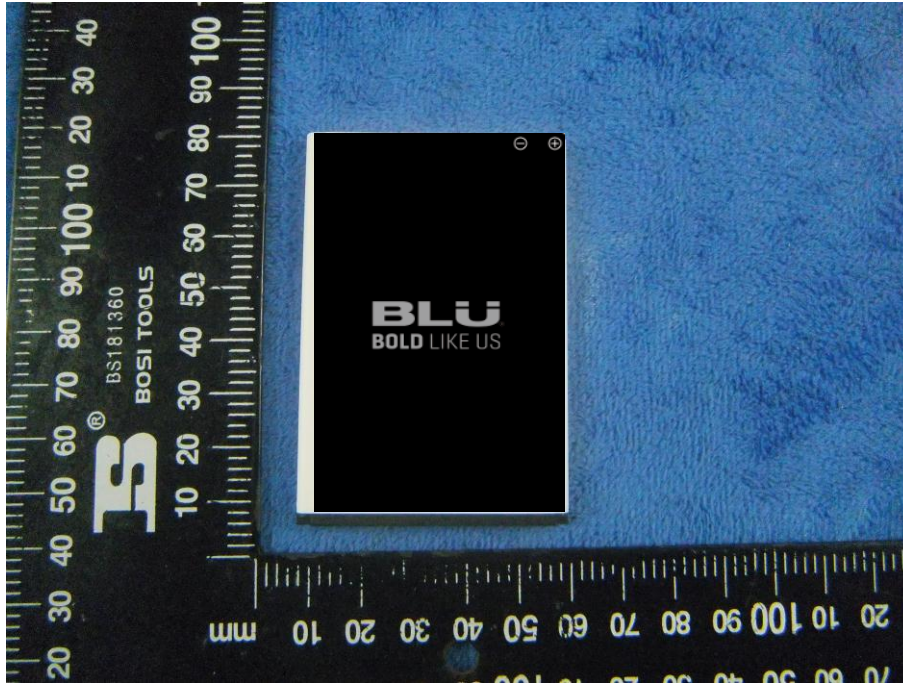


Cover Off - Top View 2

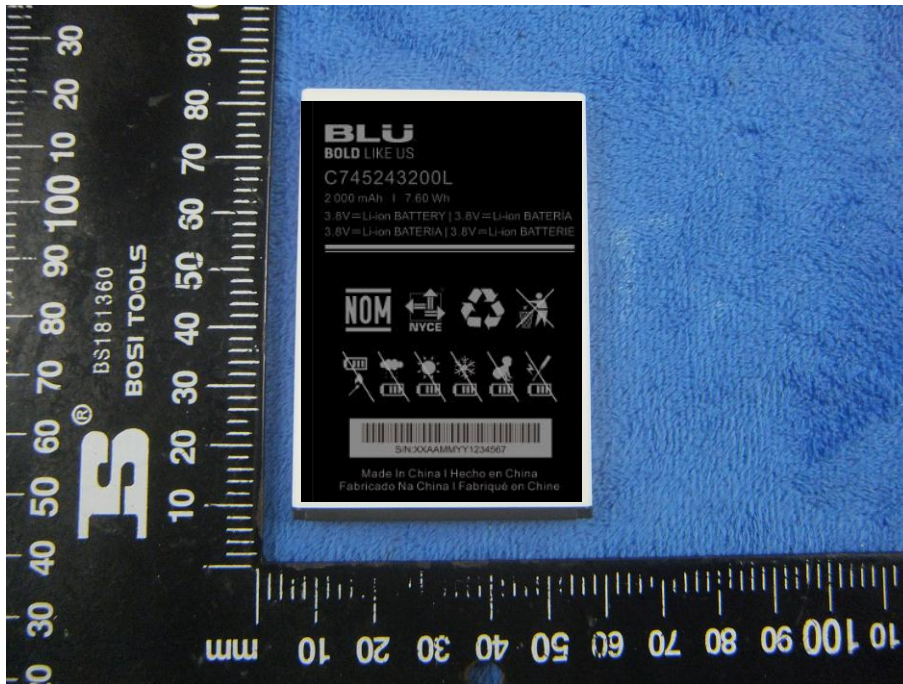


Test Report No.	17070437-FCC-R4-V1
Page	49 of 61

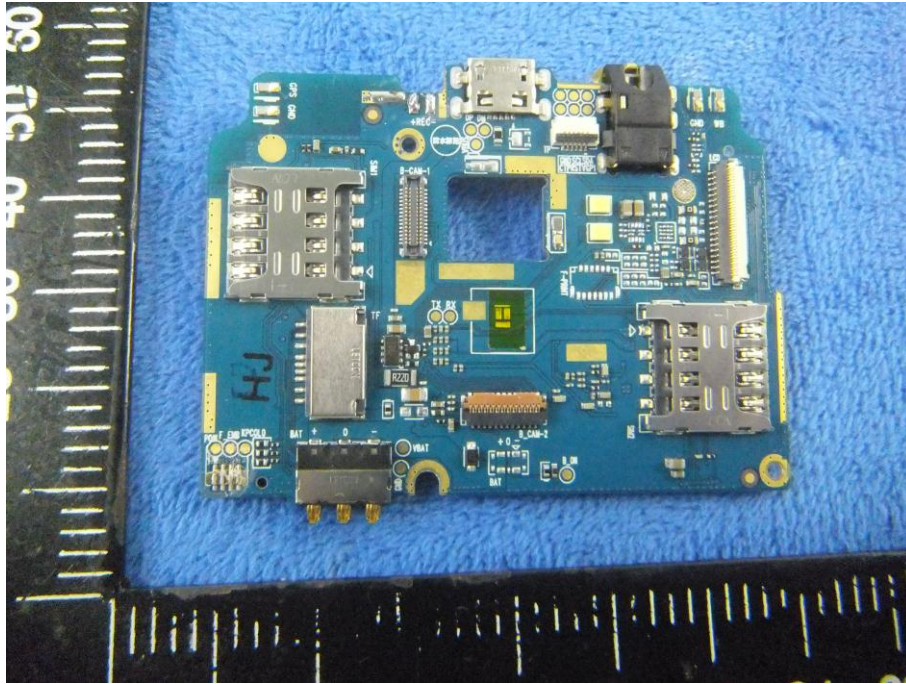
Battery - Front View



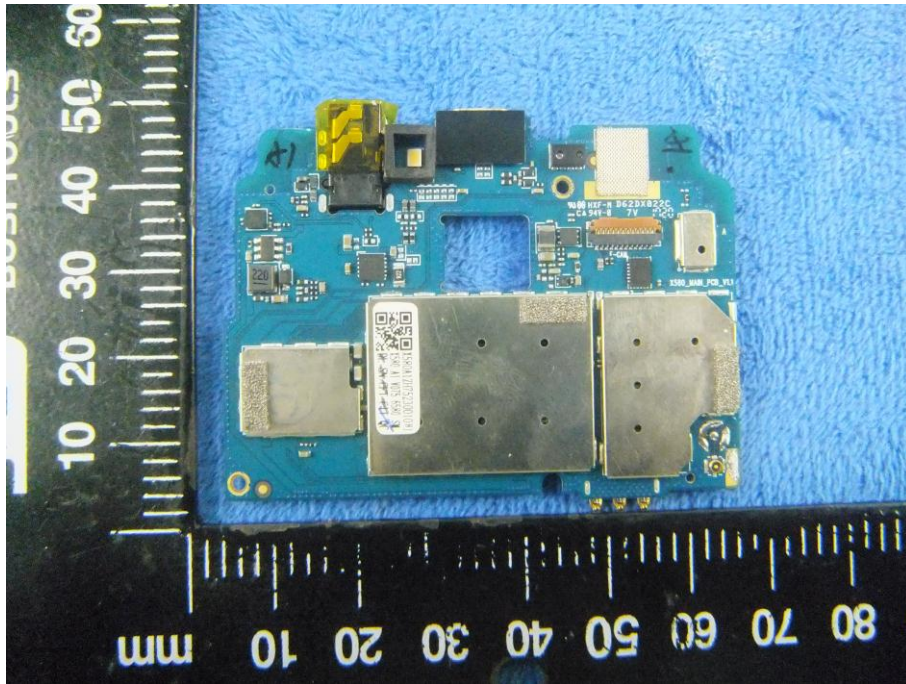
Battery - Rear View



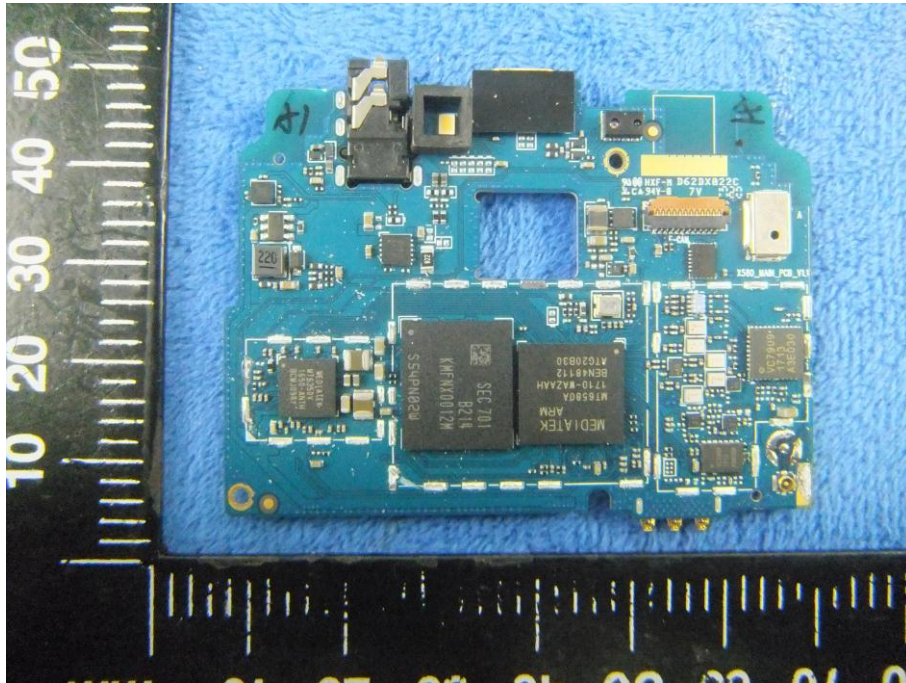
Mainboard without Shielding - Front View



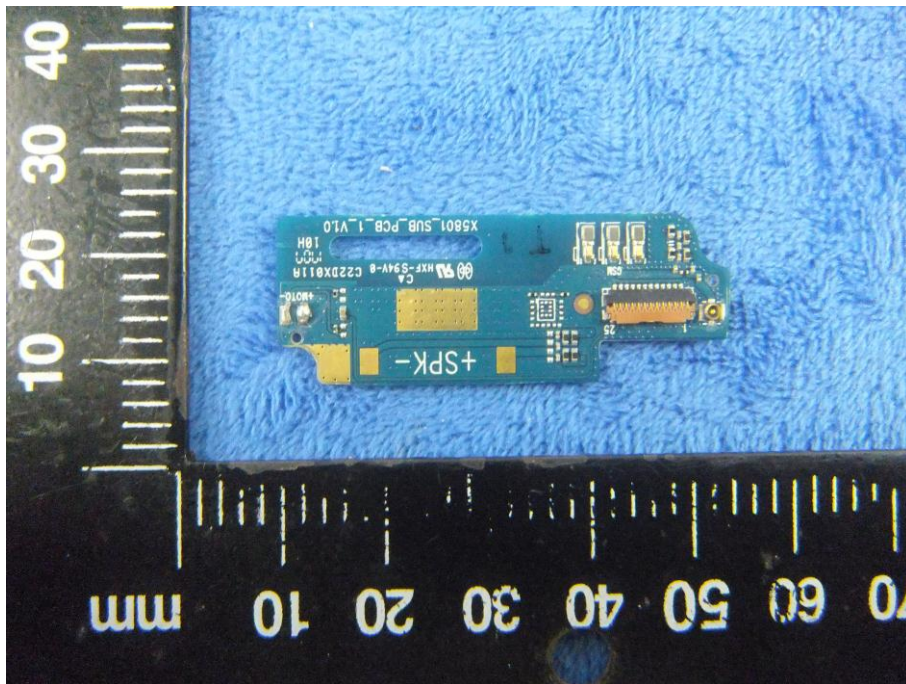
Mainboard with Shielding - Rear View



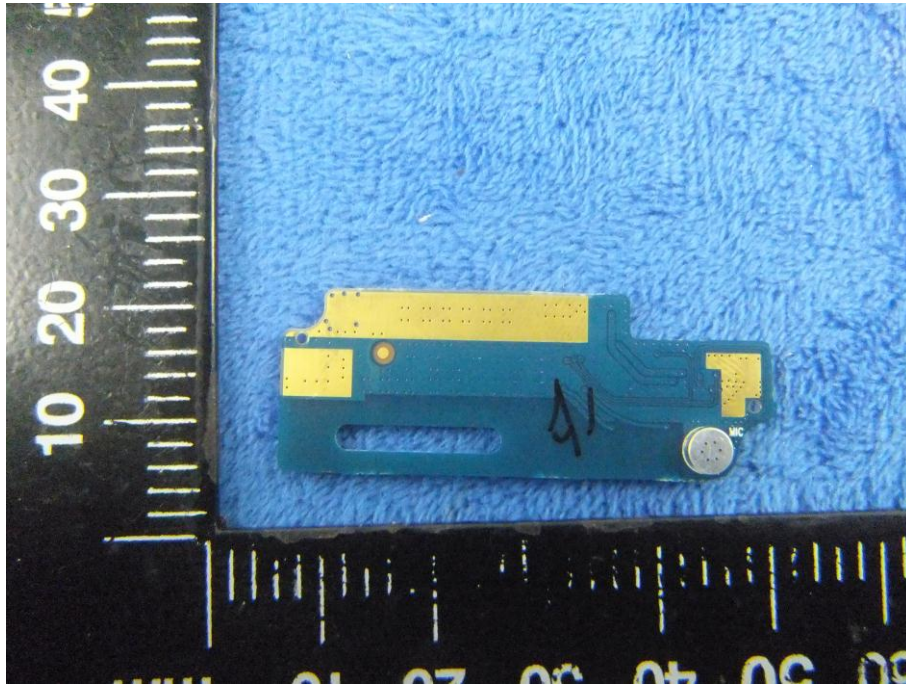
Mainboard without Shielding - Rear View



Small Mainboard - Front View



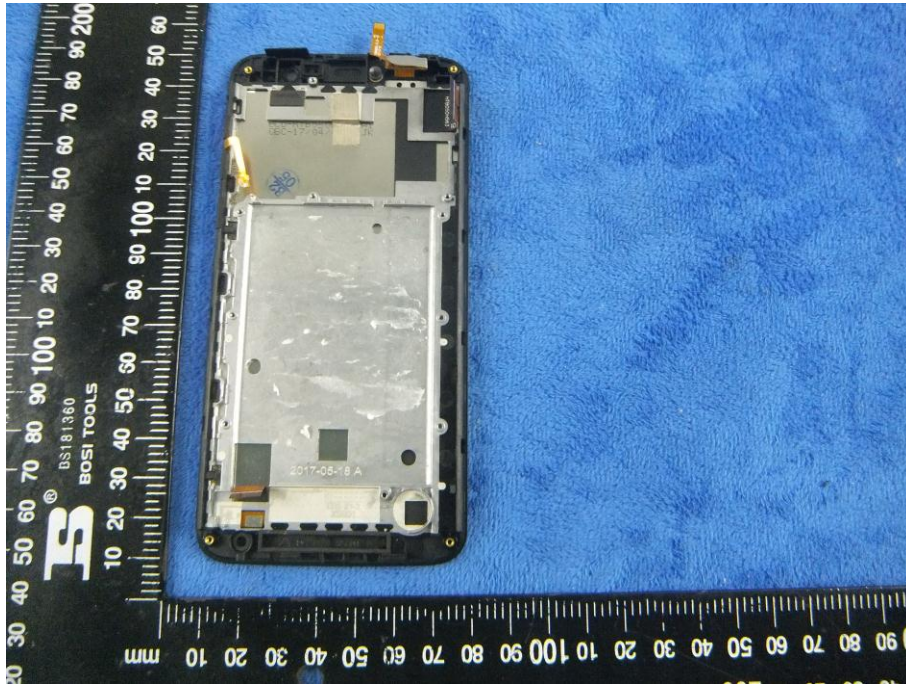
Small Mainboard - Rear View



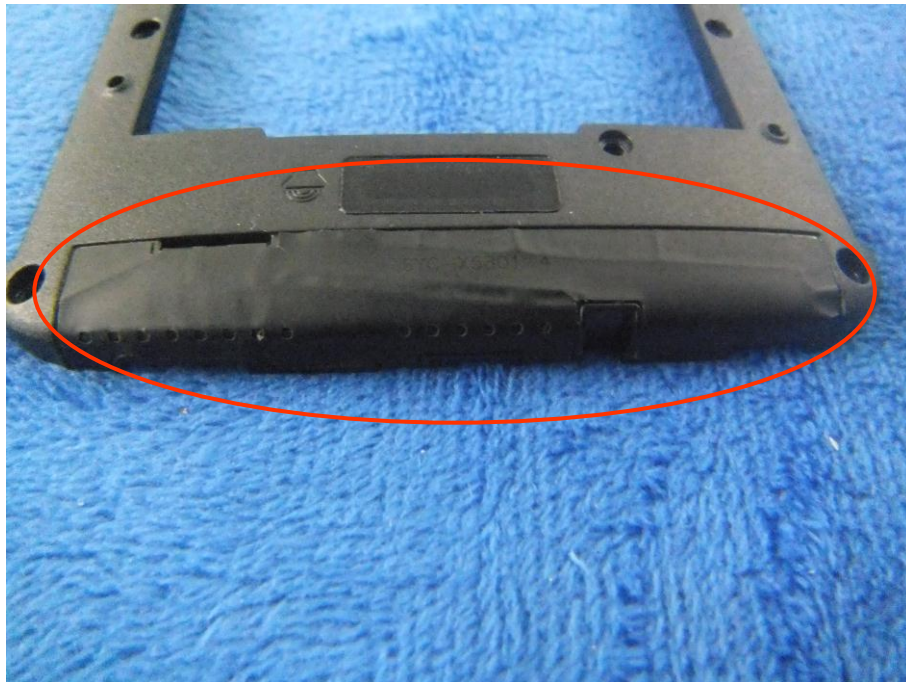
LCD - Front View



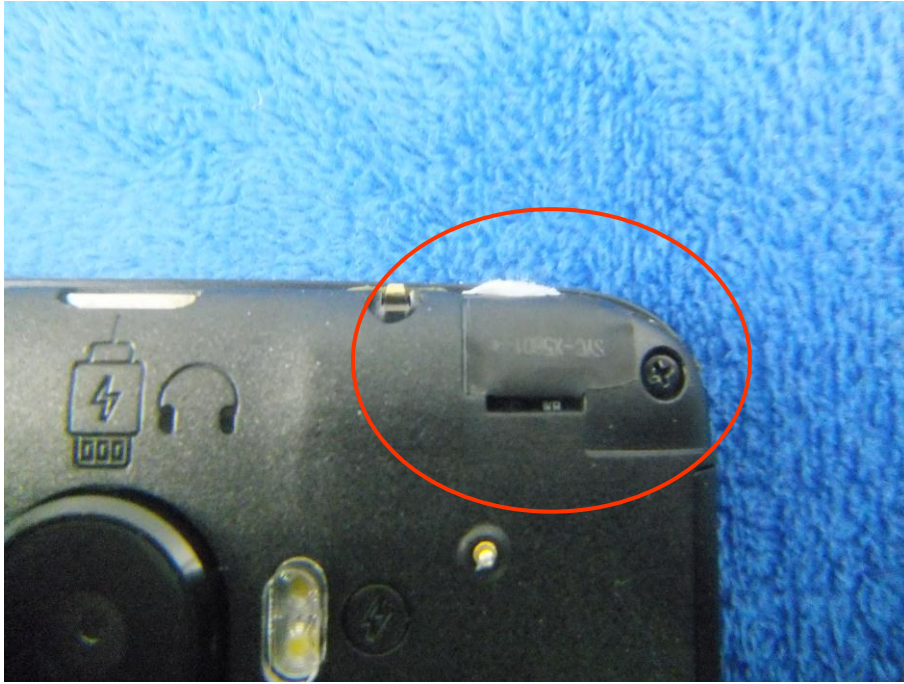
LCD – Rear View



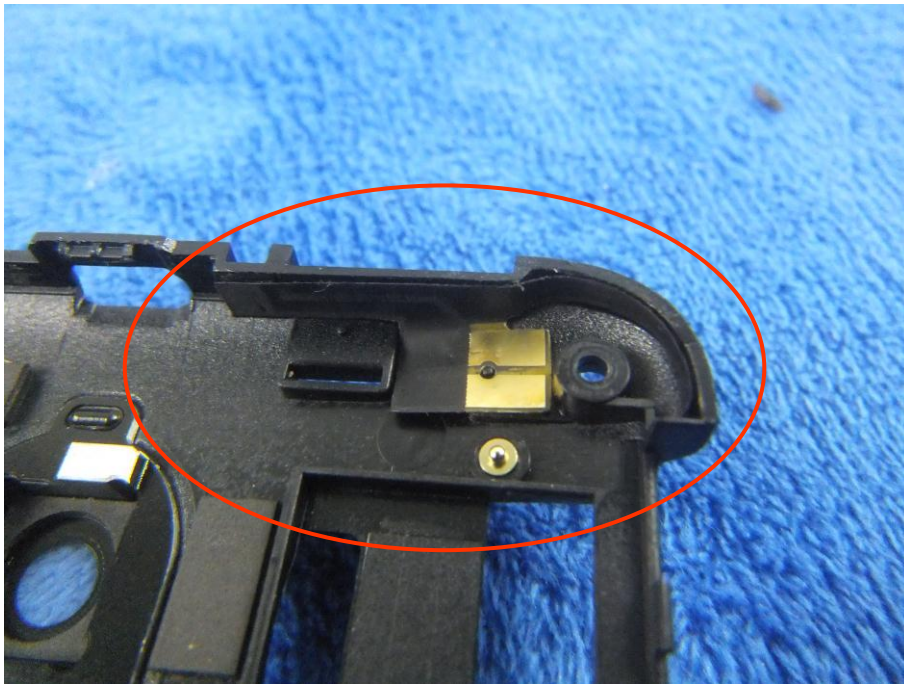
GSM/PCS/UMTS - Antenna View



BT/WIFI - Antenna View



GPS - Antenna View



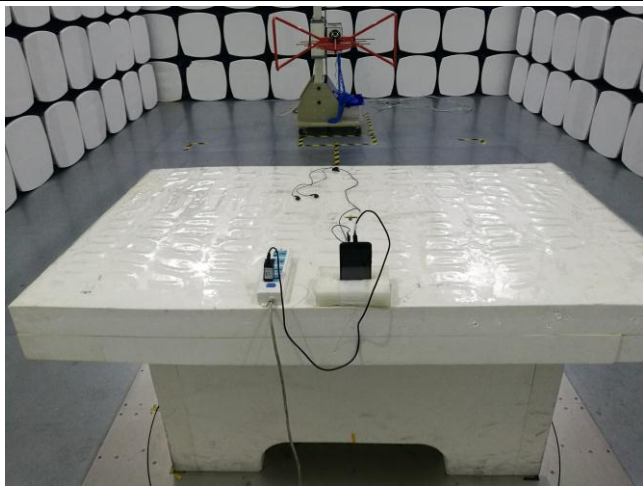
Annex B.iii. Photograph: Test Setup Photo



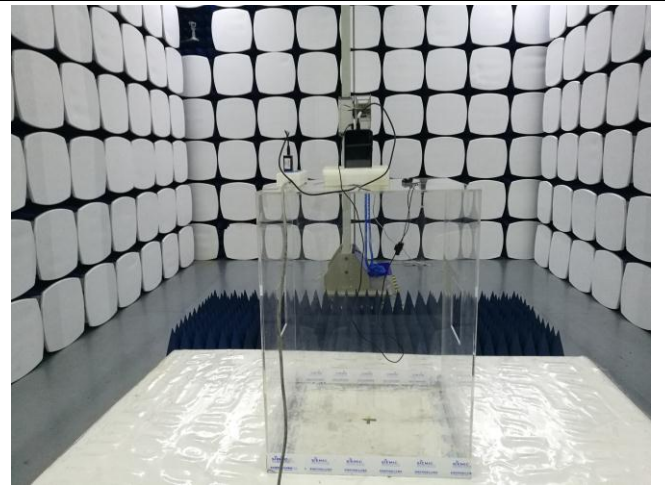
Conducted Emissions Test Setup Front View



Conducted Emissions Test Setup Side View



Radiated Spurious Emissions Test Setup Below 1GHz

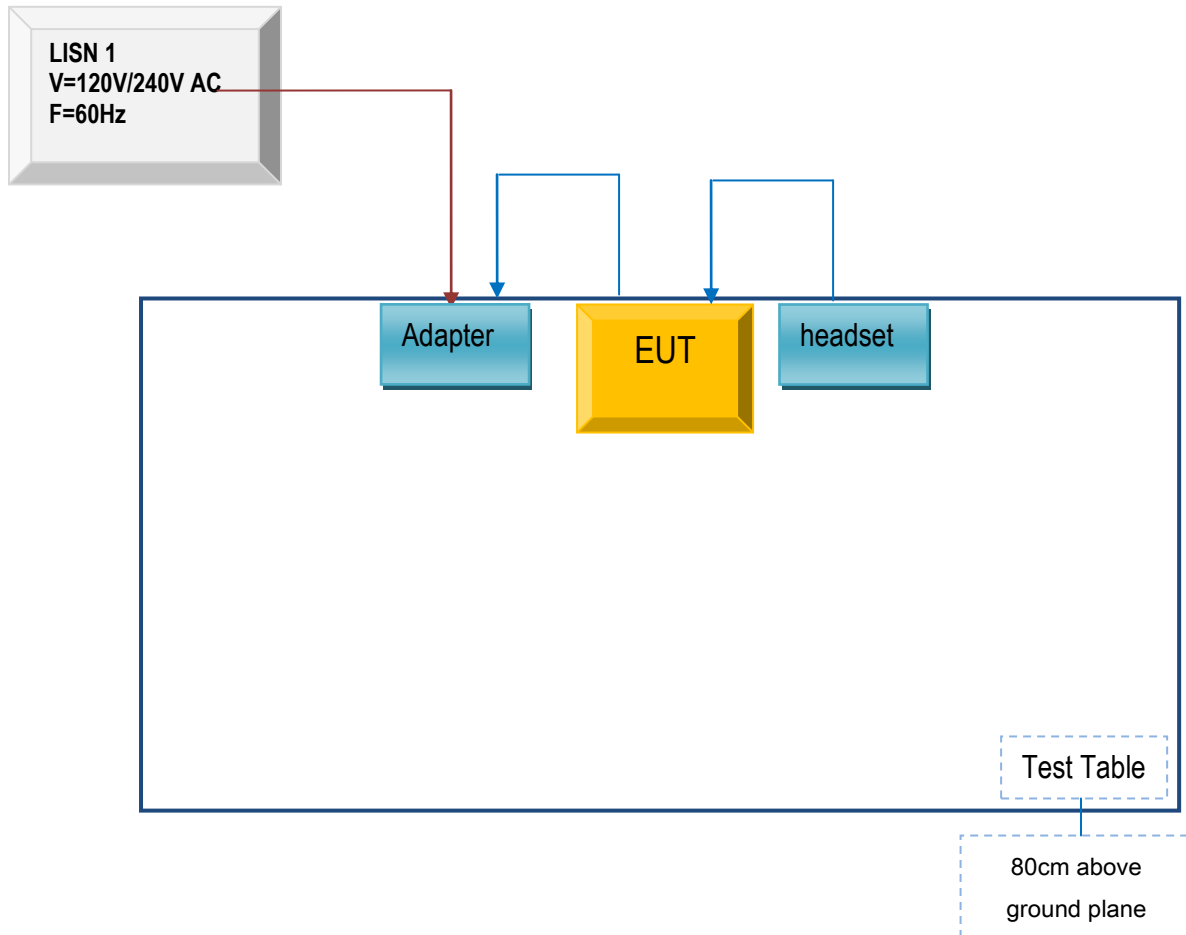


Radiated Spurious Emissions Test Setup Above
1GHz

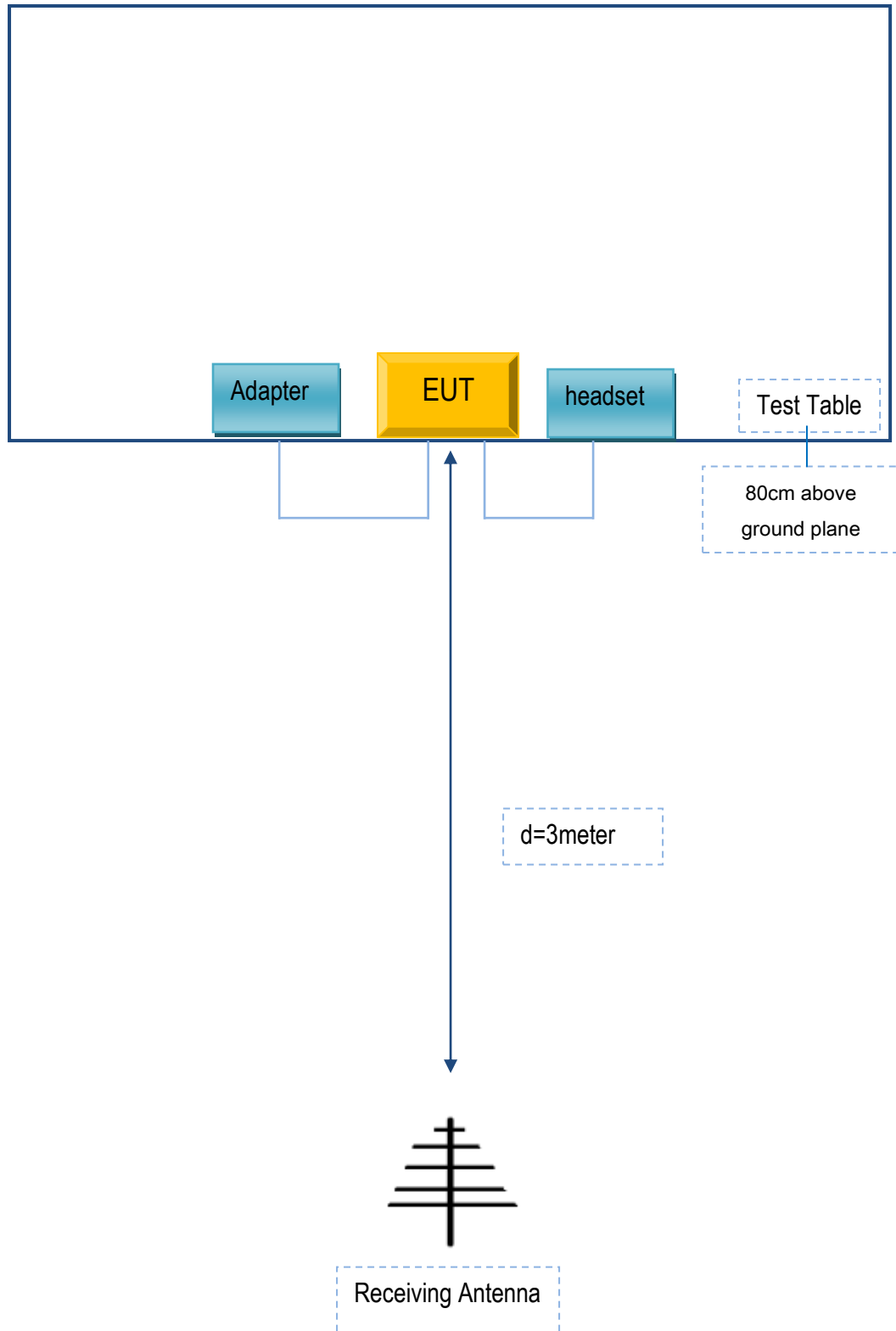
Annex C. TEST SETUP AND SUPPORTING EQUIPMENT

Annex C.ii. TEST SET UP BLOCK

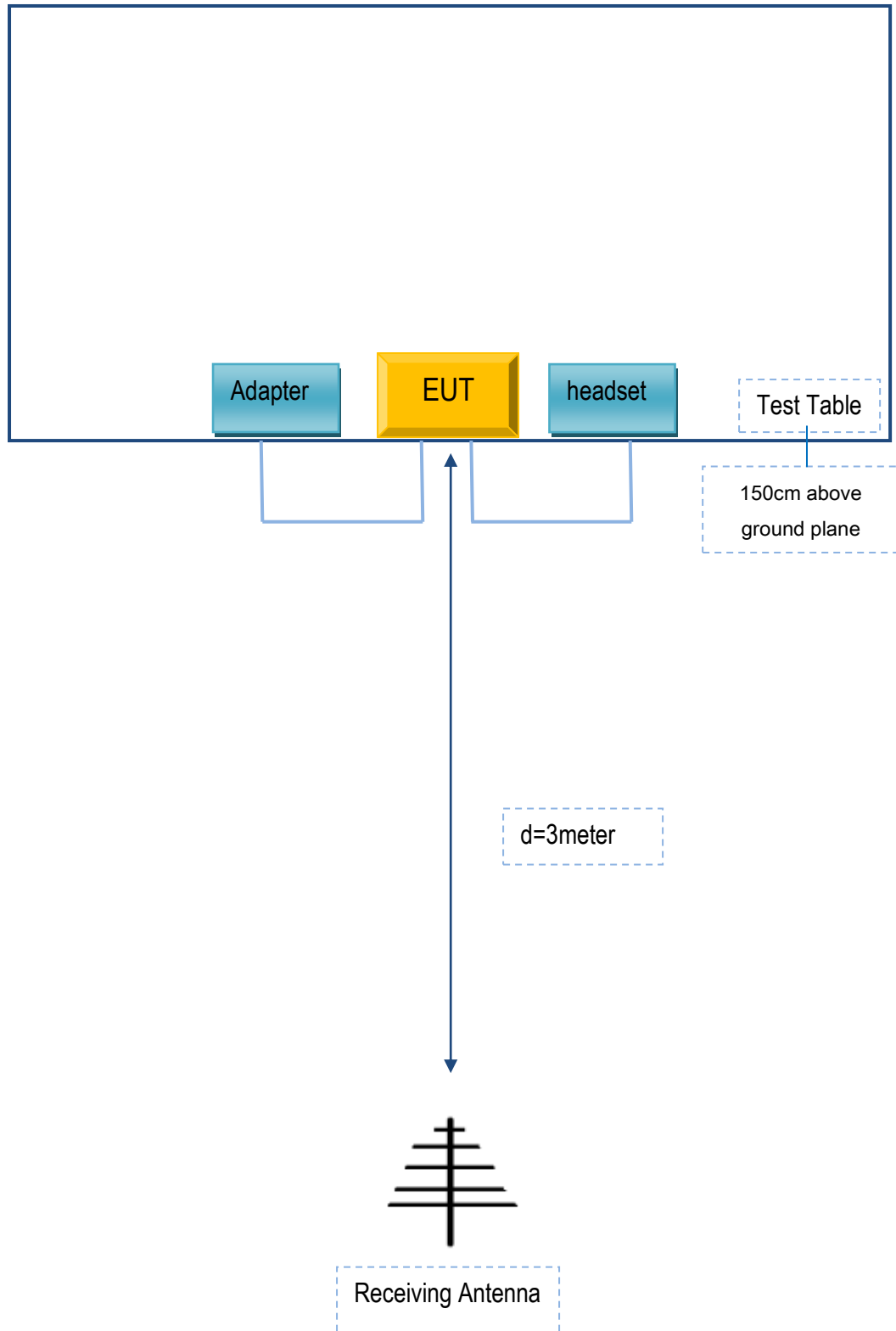
Block Configuration Diagram for AC Line Conducted Emissions



Block Configuration Diagram for Radiated Emissions (Below 1GHz) .



Block Configuration Diagram for Radiated Emissions (Above 1GHz) .



Annex C. ii. SUPPORTING EQUIPMENT DESCRIPTION

The following is a description of supporting equipment and details of cables used with the EUT.

Supporting Equipment:

Manufacturer	Equipment Description	Model	Serial No
BLU Products , Inc	Adapter	TPA-46B050100UU	N/A
SAMSUNG	headset	HS330	N/A

Supporting Cable:

Cable type	Shield Type	Ferrite Core	Length	Serial No
USB Cable	Un-shielding	No	0.8m	N/A

Test Report No.	17070437-FCC-R4-V1
Page	60 of 61

Annex D. User Manual / Block Diagram / Schematics / Partlist

Please see the attachment

Test Report No.	17070437-FCC-R4-V1
Page	61 of 61

Annex E. DECLARATION OF SIMILARITY

N/A