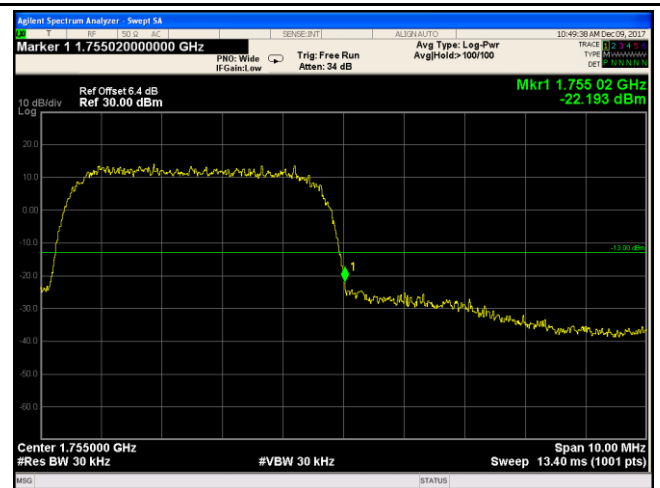


UMTS-FDD Band IV - Low Channel

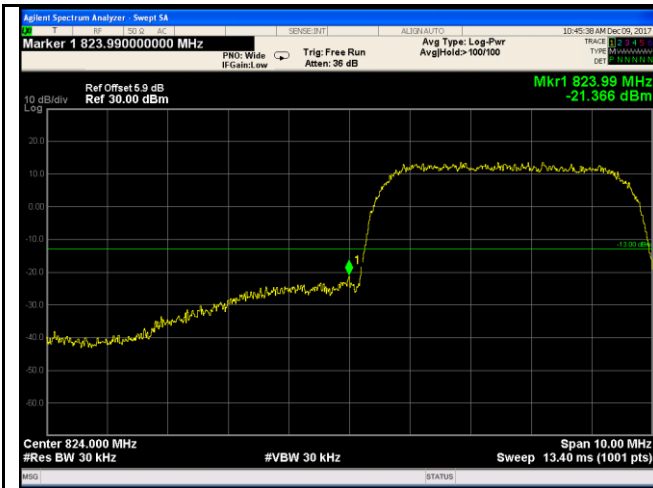
Note: Offset=Cable loss (4.5) + 10log
(46.77/30)=4.5+1.9=6.4dB



UMTS-FDD Band IV - High Channel

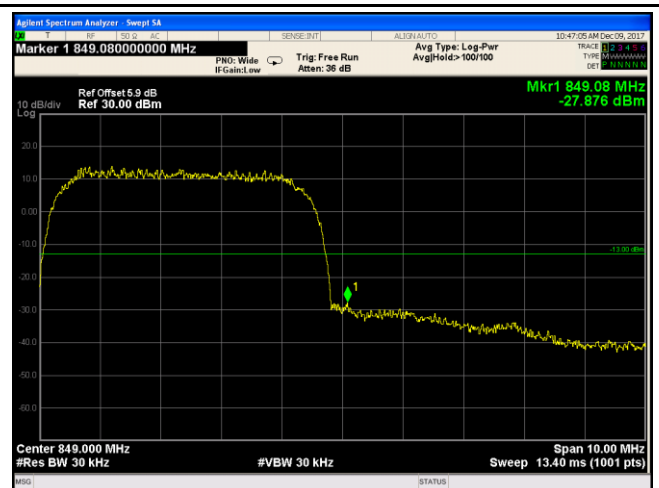
Note: Offset=Cable loss (4.0) + 10log
(47.08/30)=4.5+1.9=6.4dB

HSUPA:



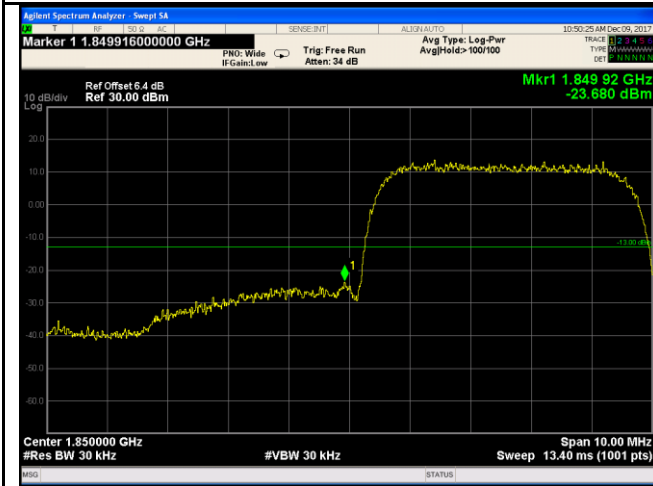
UMTS-FDD Band V - Low Channel

Note: Offset=Cable loss (4.0) + 10log
(46.95/30)=4.0+1.9=5.9dB



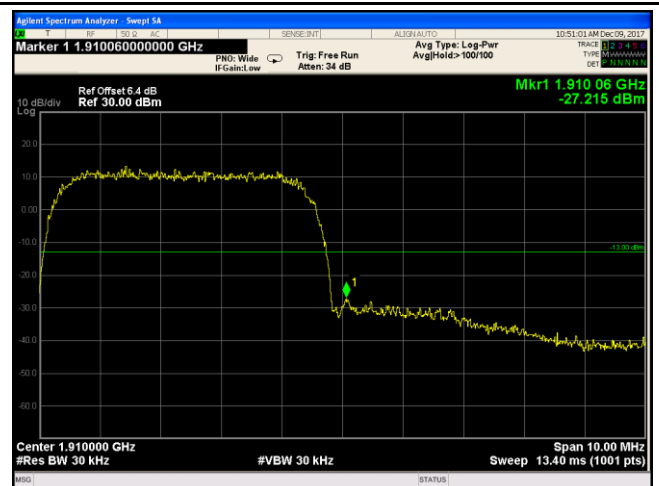
UMTS-FDD Band V - High Channel

Note: Offset=Cable loss (4.0) + 10log
(46.62/30)=4.0+1.9=5.9dB



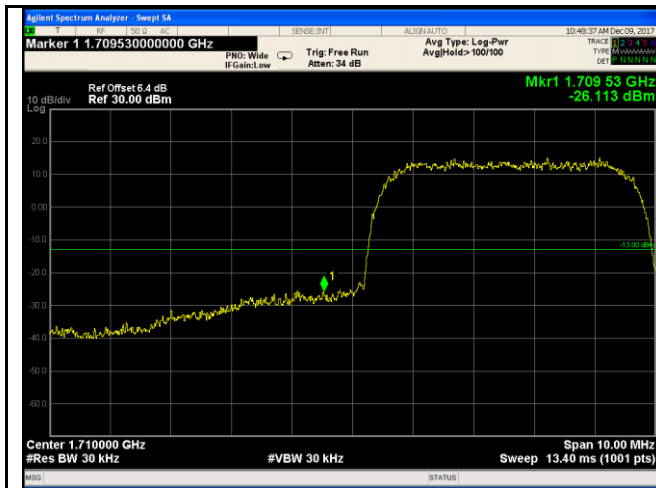
UMTS-FDD Band II - Low Channel

Note: Offset=Cable loss (4.5) + 10log
(46.86/30)=4.5+1.9=6.4dB



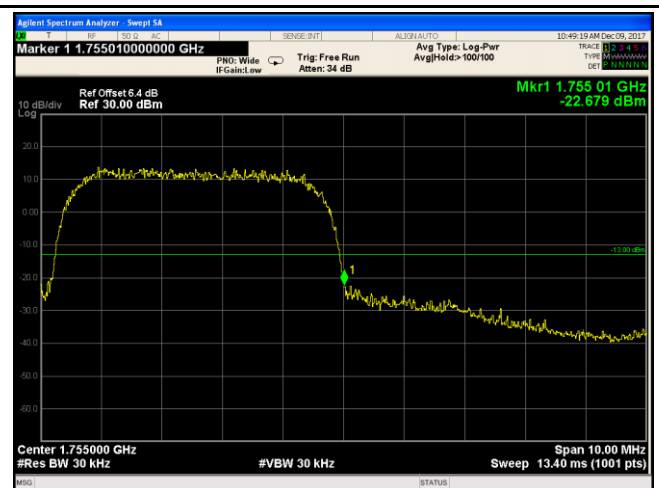
UMTS-FDD Band II - High Channel

Note: Offset=Cable loss (4.5) + 10log
(46.69/30)=4.5+1.9=6.4dB



UMTS-FDD Band IV - Low Channel

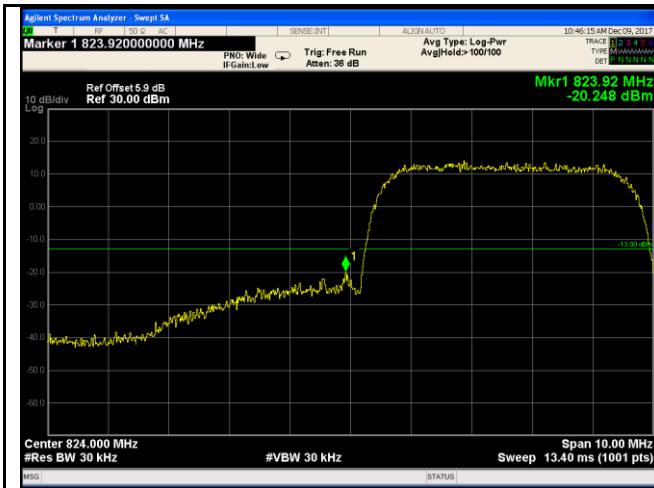
Note: Offset=Cable loss (4.5) + 10log
(46.73/30)=4.5+1.9=6.4dB



UMTS-FDD Band IV - High Channel

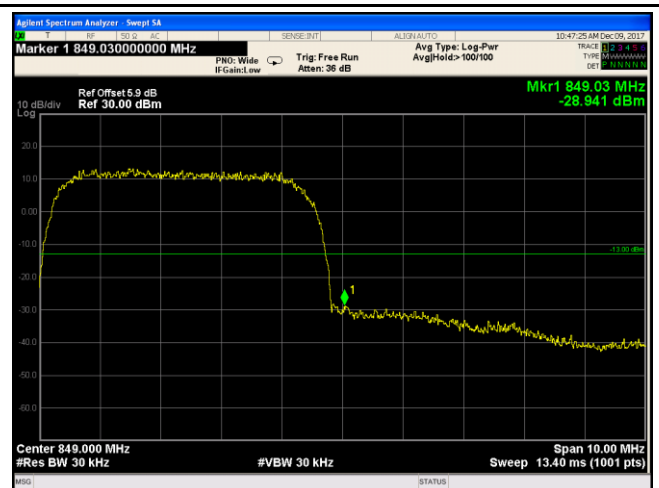
Note: Offset=Cable loss (4.5) + 10log
(47.09/30)=4.5+1.9=6.4dB

HSDPA:



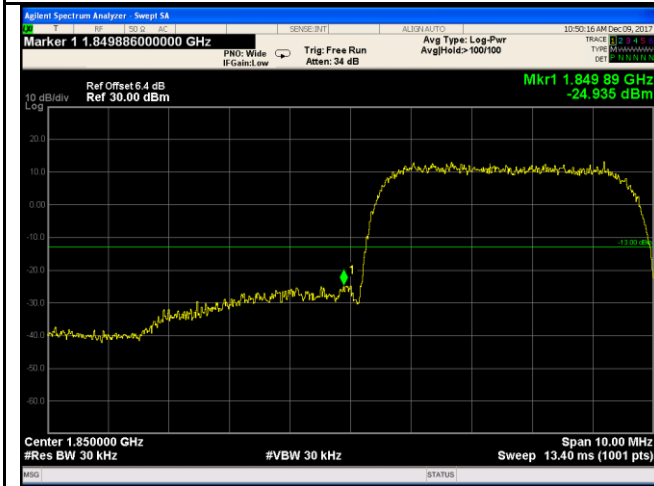
UMTS-FDD Band V - Low Channel

Note: Offset=Cable loss (4.0) + 10log
(46.93/30)=4.0+1.9=5.9dB



UMTS-FDD Band V - High Channel

Note: Offset=Cable loss (4.0) + 10log
(46.82/30)=4.0+1.9=5.9dB



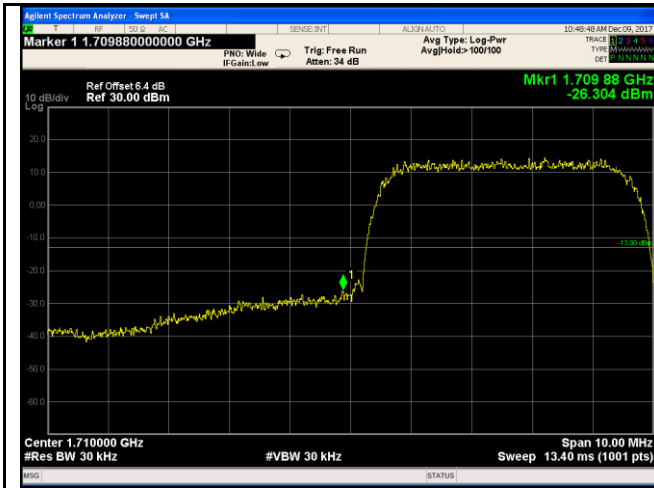
UMTS-FDD Band II - Low Channel

Note: Offset=Cable loss (4.5) + 10log
(46.86/30)=4.5+1.9=6.4dB



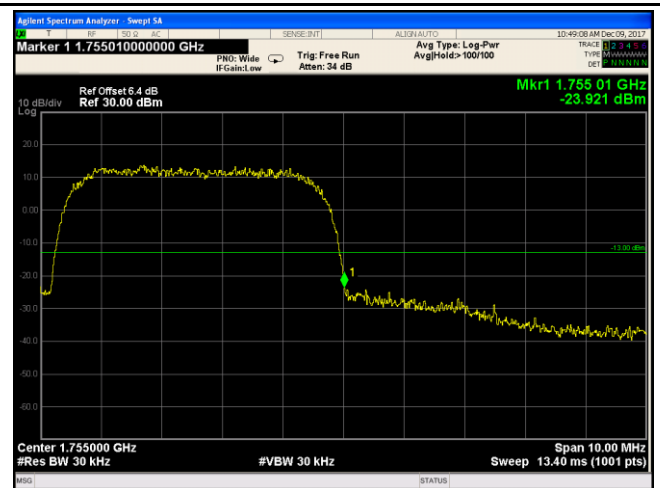
UMTS-FDD Band II - High Channel

Note: Offset=Cable loss (4.5) + 10log
(46.97/30)=4.5+1.9=6.4dB



UMTS-FDD Band IV - Low Channel

Note: Offset=Cable loss (4.5) + 10log
(46.80/30)=4.5+1.9=6.4dB




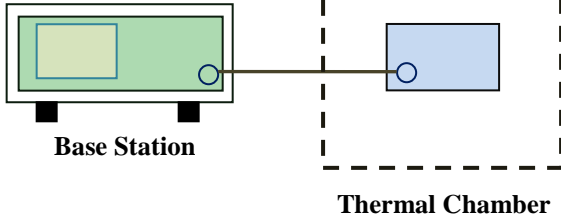
UMTS-FDD Band IV - High Channel

Note: Offset=Cable loss (4.5) + 10log
(47.04/30)=4.5+1.9=6.4dB

6.8 Frequency Stability

Temperature	25 °C
Relative Humidity	53%
Atmospheric Pressure	1010mbar
Test date :	December 12, 2017
Tested By :	Loren Luo

Requirement(s):

Spec	Item	Requirement	Applicable																																
§2.1055, §22.355 & §24.235 § 27.5(h); § 27.54	a)	<p>According to §22.355, the carrier frequency of each transmitter in the Public Mobile Services must be maintained within the tolerances given in Table below:</p> <p>Frequency Tolerance for Transmitters in the Public Mobile Services</p> <table border="1"> <thead> <tr> <th>Frequency Range (MHz)</th><th>Base, fixed (ppm)</th><th>Mobile ≤ 3 watts (ppm)</th><th>Mobile ≤ 3 watts (ppm)</th></tr> </thead> <tbody> <tr> <td>25 to 50</td><td>20.0</td><td>20.0</td><td>50.0</td></tr> <tr> <td>50 to 450</td><td>5.0</td><td>5.0</td><td>50.0</td></tr> <tr> <td>450 to 512</td><td>2.5</td><td>5.0</td><td>50.0</td></tr> <tr> <td>821 to 896</td><td>1.5</td><td>2.5</td><td>2.5</td></tr> <tr> <td>928 to 960</td><td>5.0</td><td>N/A</td><td>N/A</td></tr> <tr> <td>929 to 960</td><td>1.5</td><td>N/A</td><td>N/A</td></tr> <tr> <td>2110 to 2220</td><td>10.0</td><td>N/A</td><td>N/A</td></tr> </tbody> </table> <p>According to §24.235, the frequency stability shall be sufficient to ensure that the fundamental emissions stay within the authorized frequency block.</p>	Frequency Range (MHz)	Base, fixed (ppm)	Mobile ≤ 3 watts (ppm)	Mobile ≤ 3 watts (ppm)	25 to 50	20.0	20.0	50.0	50 to 450	5.0	5.0	50.0	450 to 512	2.5	5.0	50.0	821 to 896	1.5	2.5	2.5	928 to 960	5.0	N/A	N/A	929 to 960	1.5	N/A	N/A	2110 to 2220	10.0	N/A	N/A	
Frequency Range (MHz)	Base, fixed (ppm)	Mobile ≤ 3 watts (ppm)	Mobile ≤ 3 watts (ppm)																																
25 to 50	20.0	20.0	50.0																																
50 to 450	5.0	5.0	50.0																																
450 to 512	2.5	5.0	50.0																																
821 to 896	1.5	2.5	2.5																																
928 to 960	5.0	N/A	N/A																																
929 to 960	1.5	N/A	N/A																																
2110 to 2220	10.0	N/A	N/A																																
Test setup	 <p>The diagram shows a Base Station (represented by a green rectangle with a yellow square inside) connected by a line to a Thermal Chamber (represented by a blue rectangle inside a dashed black border). Both components have a small circle representing an antenna or connector.</p>																																		

Procedure	A communication link was established between EUT and base station. The frequency error was monitored and measured by base station under variation of ambient temperature and variation of primary supply voltage. Limit: The frequency stability of the transmitter shall be maintained within $\pm 0.00025\%$ ($\pm 2.5\text{ppm}$) of the center frequency.
Remark	
Result	<input checked="" type="checkbox"/> Pass <input type="checkbox"/> Fail

Test Data ☒ Yes ☐ N/A

Test Plot ☐ Yes (See below) ☒ N/A

GSM Voice:

Cellular Band (Part 22H) result

Middle Channel, $f_0 = 836.6$ MHz				
Temperature (°C)	Power Supplied (V _{DC})	Frequency Error (Hz)	Frequency Error (ppm)	Limit (ppm)
-10	3.7	22	0.0263	2.5
0		18	0.0215	2.5
10		17	0.0203	2.5
20		14	0.0167	2.5
30		13	0.0155	2.5
40		16	0.0191	2.5
50		18	0.0215	2.5
55		17	0.0203	2.5
25	4.2	20	0.0239	2.5
	3.5	19	0.0227	2.5

PCS Band (Part 24E) result

Middle Channel, $f_0 = 1880$ MHz				
Temperature (°C)	Power Supplied (V _{DC})	Frequency Error (Hz)	Frequency Error (ppm)	Limit (ppm)
-10	3.7	22	0.0117	2.5
0		18	0.0096	2.5
10		16	0.0085	2.5
20		16	0.0085	2.5
30		16	0.0085	2.5
40		16	0.0085	2.5
50		22	0.0117	2.5
55		17	0.0090	2.5
25	4.2	18	0.0096	2.5
	3.5	17	0.0090	2.5

RMC:

UMTS-FDD Band V (Part 22H)

Middle Channel, $f_0 = 835$ MHz				
Temperature (°C)	Power Supplied (V _{DC})	Frequency Error (Hz)	Frequency Error (ppm)	Limit (ppm)
-10	3.7	19	0.0228	2.5
0		14	0.0168	2.5
10		16	0.0192	2.5
20		15	0.0180	2.5
30		15	0.0180	2.5
40		17	0.0204	2.5
50		22	0.0263	2.5
55		18	0.0216	2.5
25	4.2	18	0.0216	2.5
	3.5	17	0.0204	2.5

UMTS-FDD Band II (Part 24E)

Middle Channel, $f_0 = 1880$ MHz				
Temperature (°C)	Power Supplied (V _{DC})	Frequency Error (Hz)	Frequency Error (ppm)	Limit (ppm)
-10	3.7	18	0.0096	2.5
0		16	0.0085	2.5
10		14	0.0074	2.5
20		14	0.0074	2.5
30		14	0.0074	2.5
40		16	0.0085	2.5
50		22	0.0117	2.5
55		21	0.0112	2.5
25	4.2	20	0.0106	2.5
	3.5	16	0.0085	2.5

UMTS-FDD Band IV (Part 27)

Middle Channel, $f_0 = 1733$ MHz				
Temperature (°C)	Power Supplied (V _{DC})	Frequency Error (Hz)	Frequency Error (ppm)	Limit (ppm)
-10	3.7	21	0.0251	2.5
0		16	0.0192	2.5
10		15	0.0180	2.5
20		14	0.0168	2.5
30		17	0.0204	2.5
40		15	0.0180	2.5
50		18	0.0216	2.5
55		17	0.0204	2.5
25	4.2	19	0.0228	2.5
	3.5	18	0.0216	2.5

Annex A. TEST INSTRUMENT

Instrument	Model	Serial #	Cal Date	Cal Due	In use
RF Conducted Test					
Agilent ESA-E SERIES SPECTRUM ANALYZER	E4407B	MY45108319	09/14/2017	09/13/2018	<input checked="" type="checkbox"/>
Power Splitter	1#	1#	08/30/2017	08/29/2018	<input checked="" type="checkbox"/>
Universal Radio Communication Tester	CMU200	121393	09/23/2017	09/22/2018	<input checked="" type="checkbox"/>
Temperature/Humidity Chamber	UHL-270	001	10/07/2017	10/06/2018	<input checked="" type="checkbox"/>
DC Power Supply	E3640A	MY40004013	09/15/2017	09/14/2018	<input checked="" type="checkbox"/>
RF Power Sensor	Dare RPR3006C/P/W	AY554013	09/15/2017	09/14/2018	<input checked="" type="checkbox"/>
Radiated Emissions					
EMI test receiver	ESL6	100262	09/15/2017	09/14/2018	<input checked="" type="checkbox"/>
OPT 010 AMPLIFIER (0.1-1300MHz)	8447E	2727A02430	08/30/2017	08/29/2018	<input checked="" type="checkbox"/>
Horn Antenna	BBHA9170	3145226D1	09/27/2017	09/26/2018	<input checked="" type="checkbox"/>
Microwave Preamplifier (1 ~ 26.5GHz)	8449B	3008A02402	03/23/2017	03/22/2018	<input checked="" type="checkbox"/>
Bilog Antenna (30MHz~6GHz)	JB6	A110712	09/19/2017	09/18/2018	<input checked="" type="checkbox"/>
Bilog Antenna (30MHz~2GHz)	JB1	A112017	09/19/2017	09/18/2018	<input checked="" type="checkbox"/>
Double Ridge Horn Antenna (1 ~18GHz)	AH-118	71259	09/22/2017	09/21/2018	<input checked="" type="checkbox"/>
Double Ridge Horn Antenna (1 ~18GHz)	AH-118	71283	09/22/2017	09/21/2018	<input checked="" type="checkbox"/>
SYNTHESIZED SIGNAL GENERATOR	8665B	3744A01293	09/15/2017	09/14/2018	<input checked="" type="checkbox"/>
Power Amplifier	SMC150D	R1553-0313	03/08/2017	03/07/2018	<input checked="" type="checkbox"/>
Power Amplifier	S41-25D	R1553-0314	05/26/2017	05/25/2018	<input checked="" type="checkbox"/>

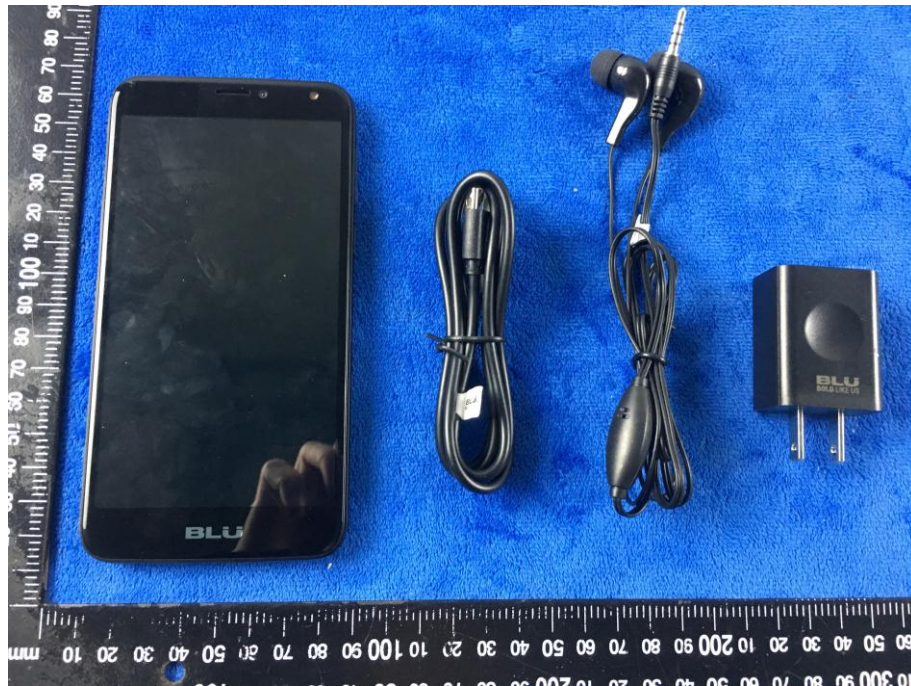
Test Report	17071301-FCC-R1
Page	87 of 104

Tunable Notch Filter	3NF-800/1000-S	AA4	08/30/2017	08/29/2018	<input checked="" type="checkbox"/>
Tunable Notch Filter	3NF-1000/2000-S	AM 4	08/30/2017	08/29/2018	<input checked="" type="checkbox"/>

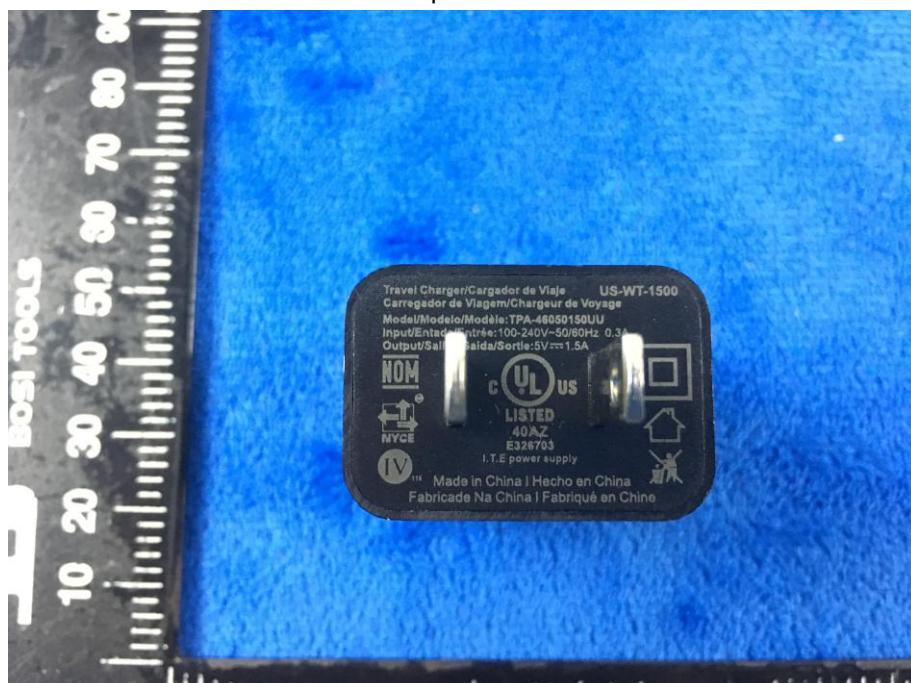
Annex B. EUT And Test Setup Photographs

Annex B.i. Photograph: EUT External Photo

Whole Package View



Adapter View



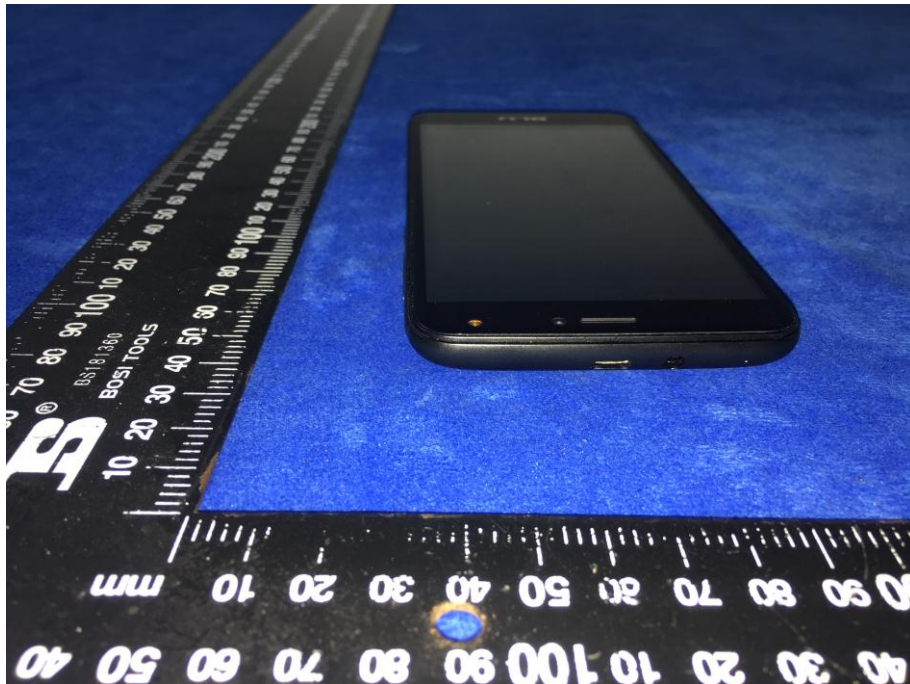
EUT - Front View



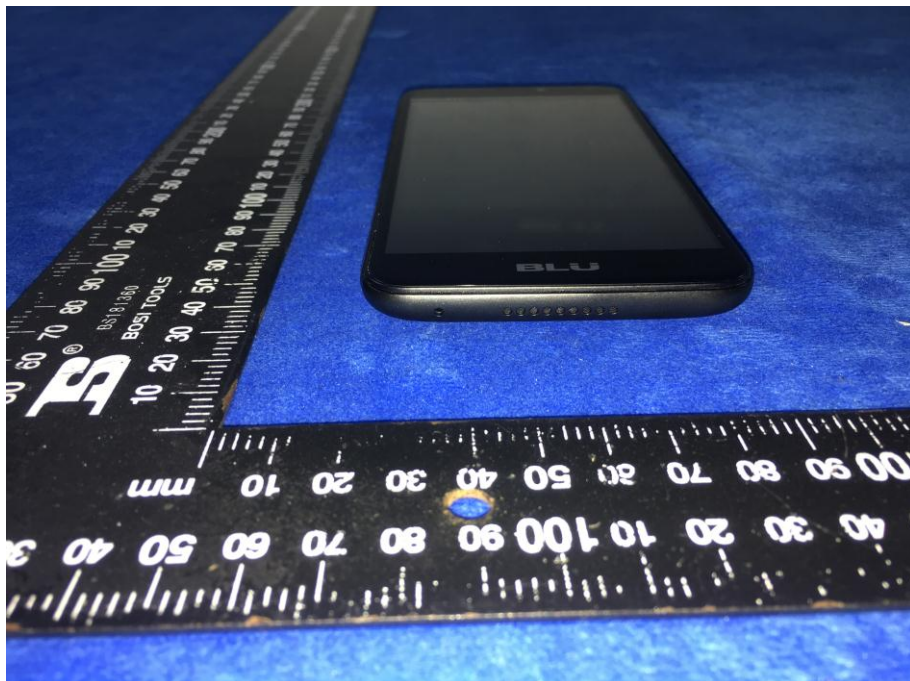
EUT - Rear View



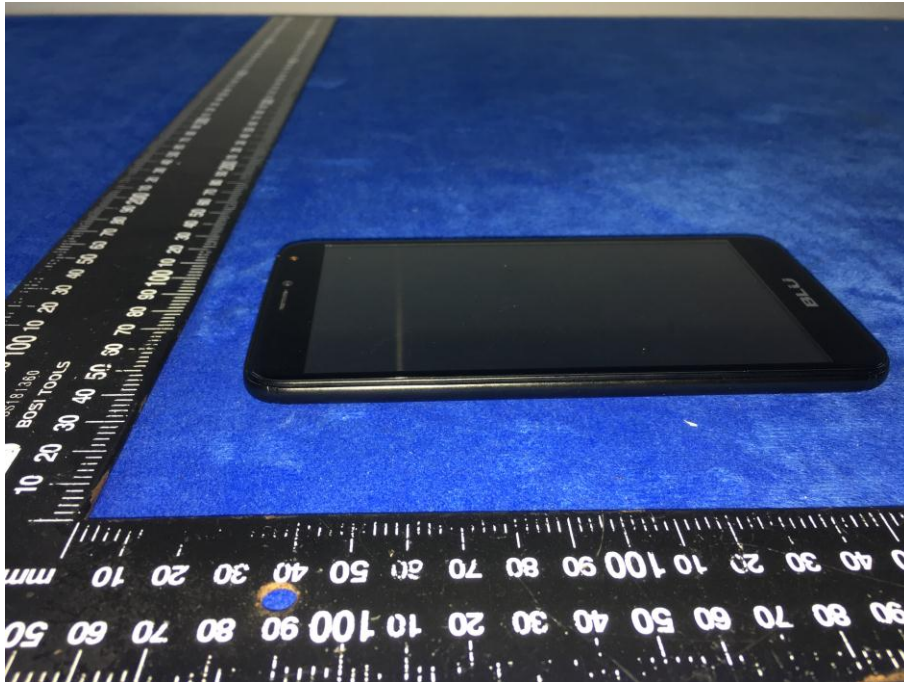
EUT - Top View



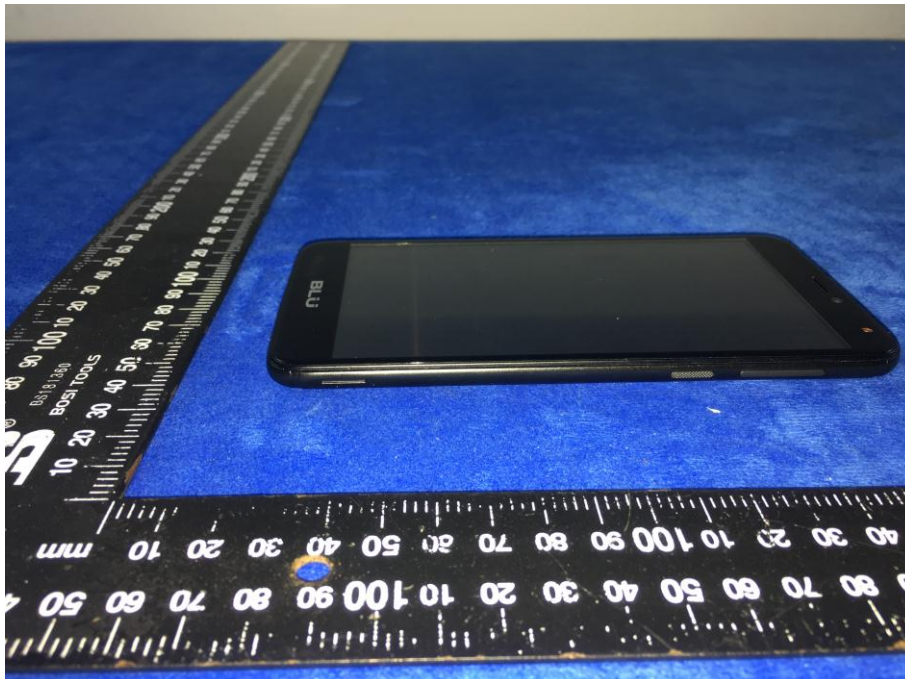
EUT - Bottom View



EUT - Left View



EUT - Right View



Annex B.ii. Photograph: EUT Internal Photo

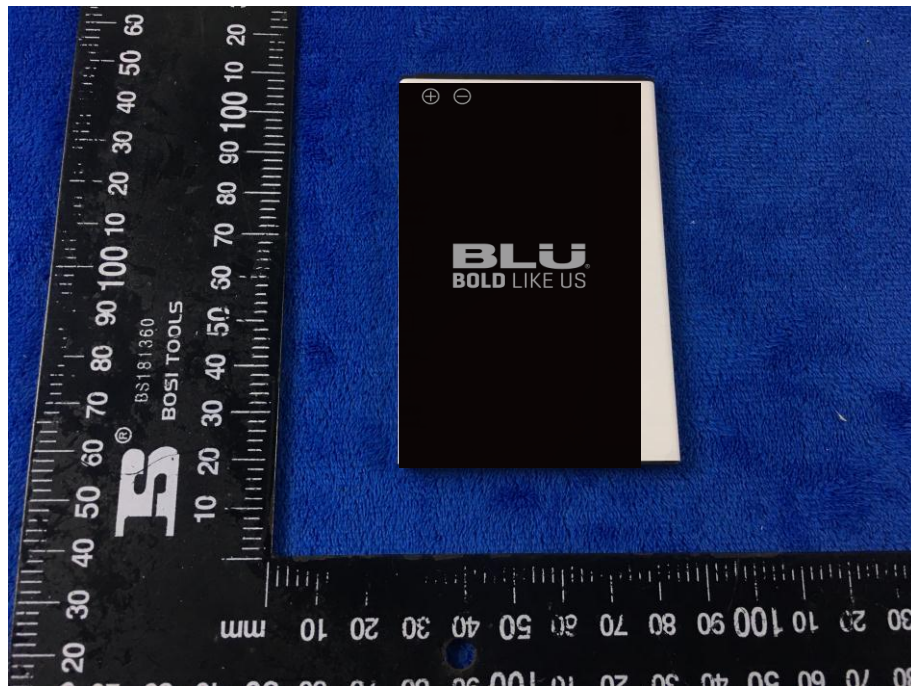
Cover Off - Top View 1



Cover Off - Top View 2



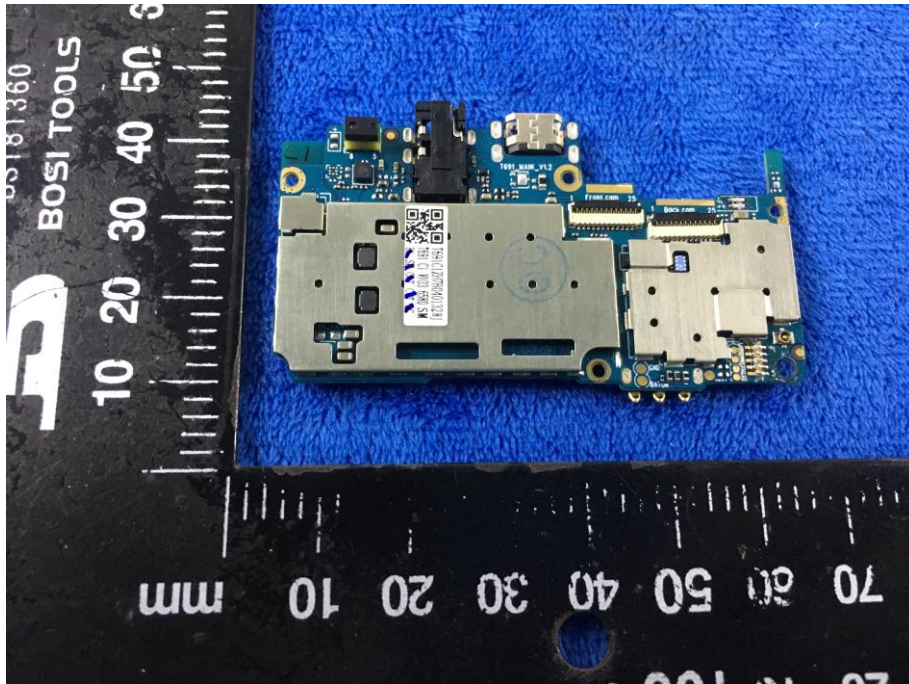
Battery - Front View



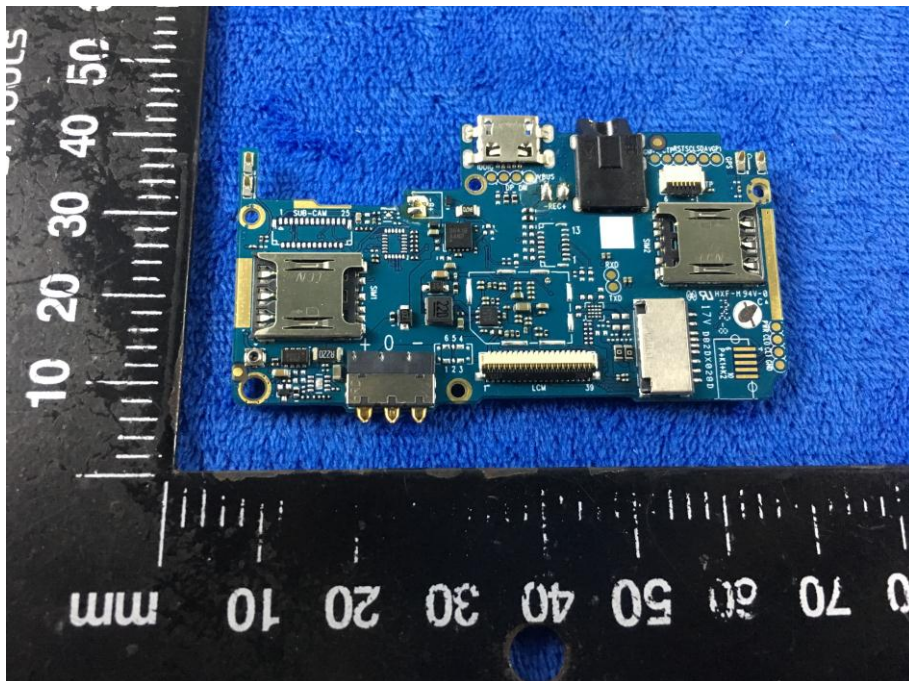
Battery - Rear View



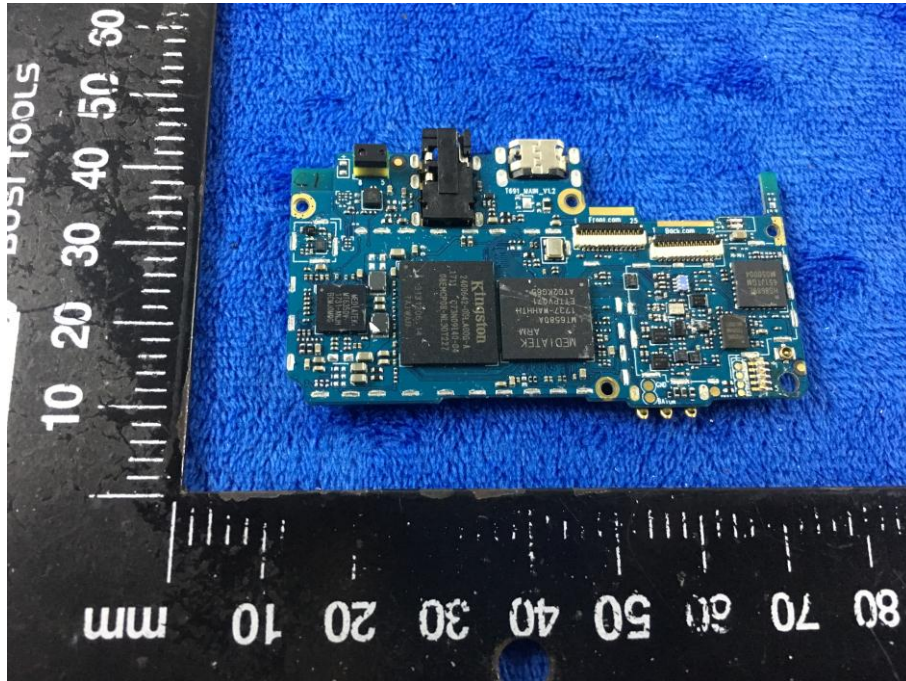
Mainboard with Shielding – Front View



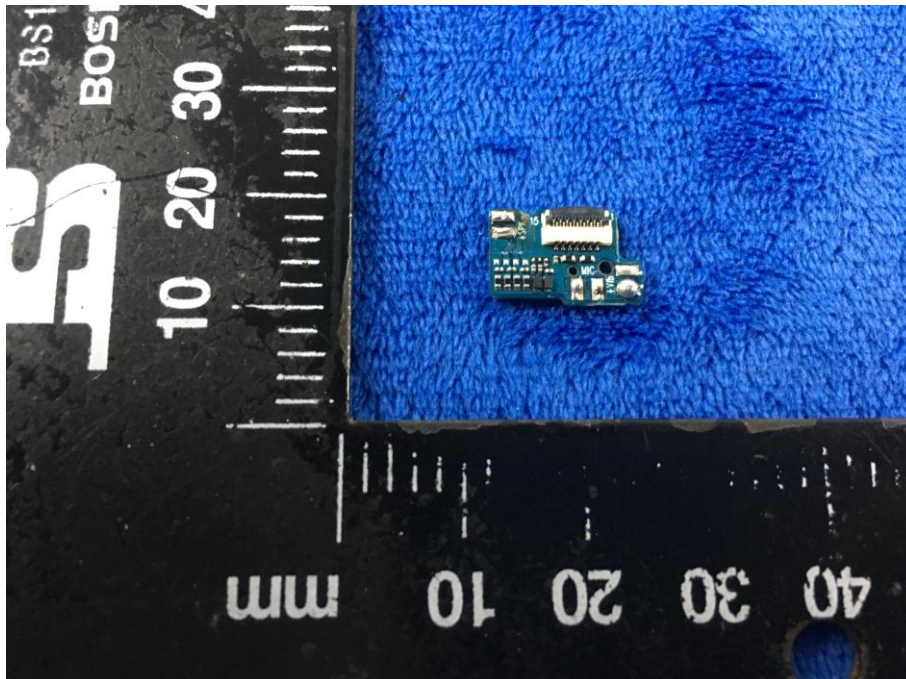
Mainboard with Shielding – Rear View



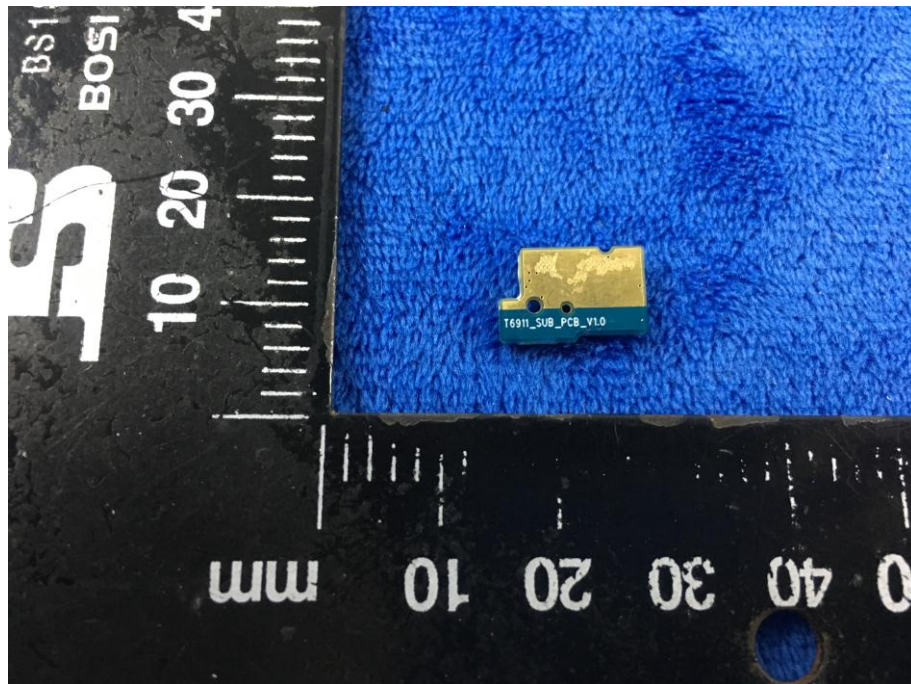
Mainboard without Shielding – Rear View



Small Mainboard – Front View



Small Mainboard – Rear View



LCD – Front View



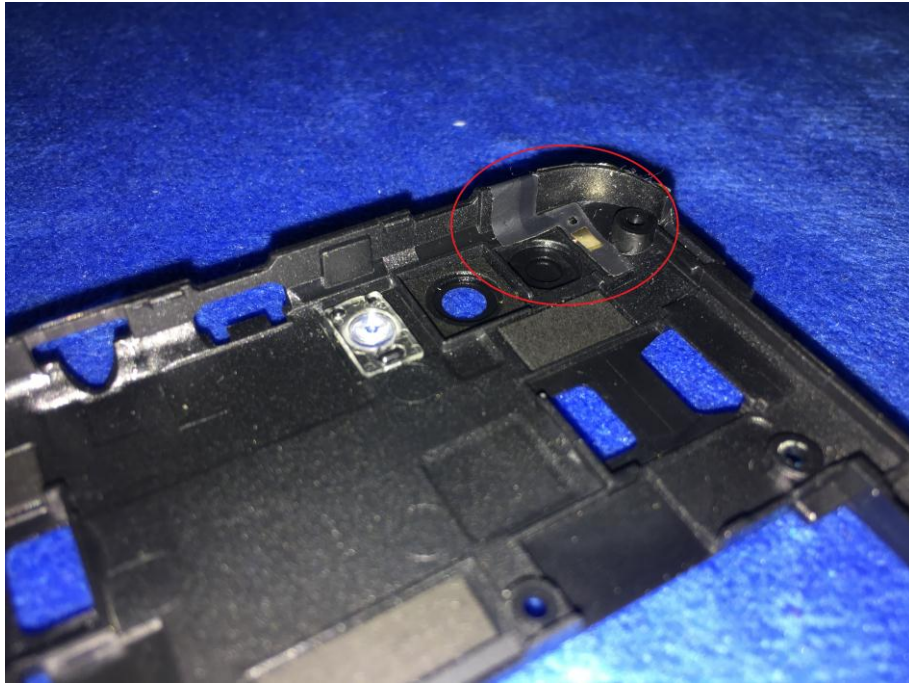
LCD – Rear View



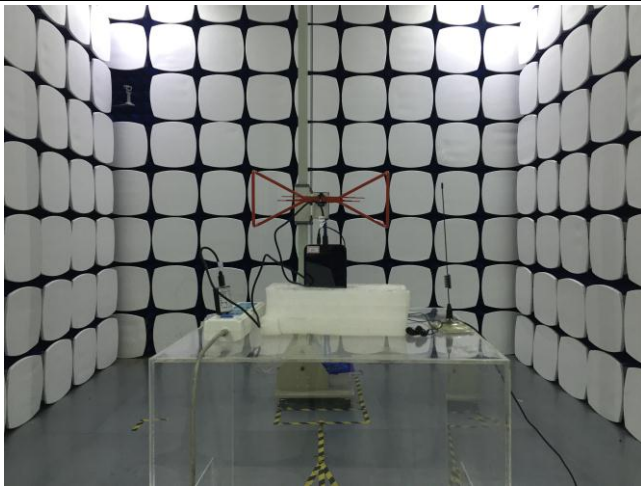
GSM/PCS/UMTS-FDD - Antenna View



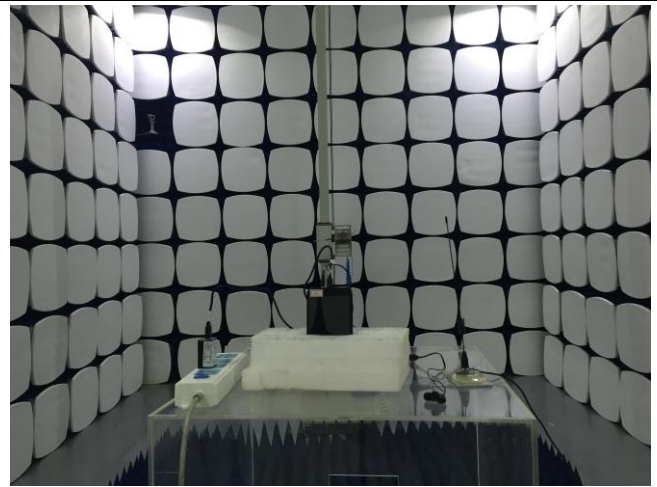
WIFI/BT/BLE/GPS - Antenna View



Annex B.iii. Photograph: Test Setup Photo



Radiated Spurious Emissions Test Setup Below 1GHz

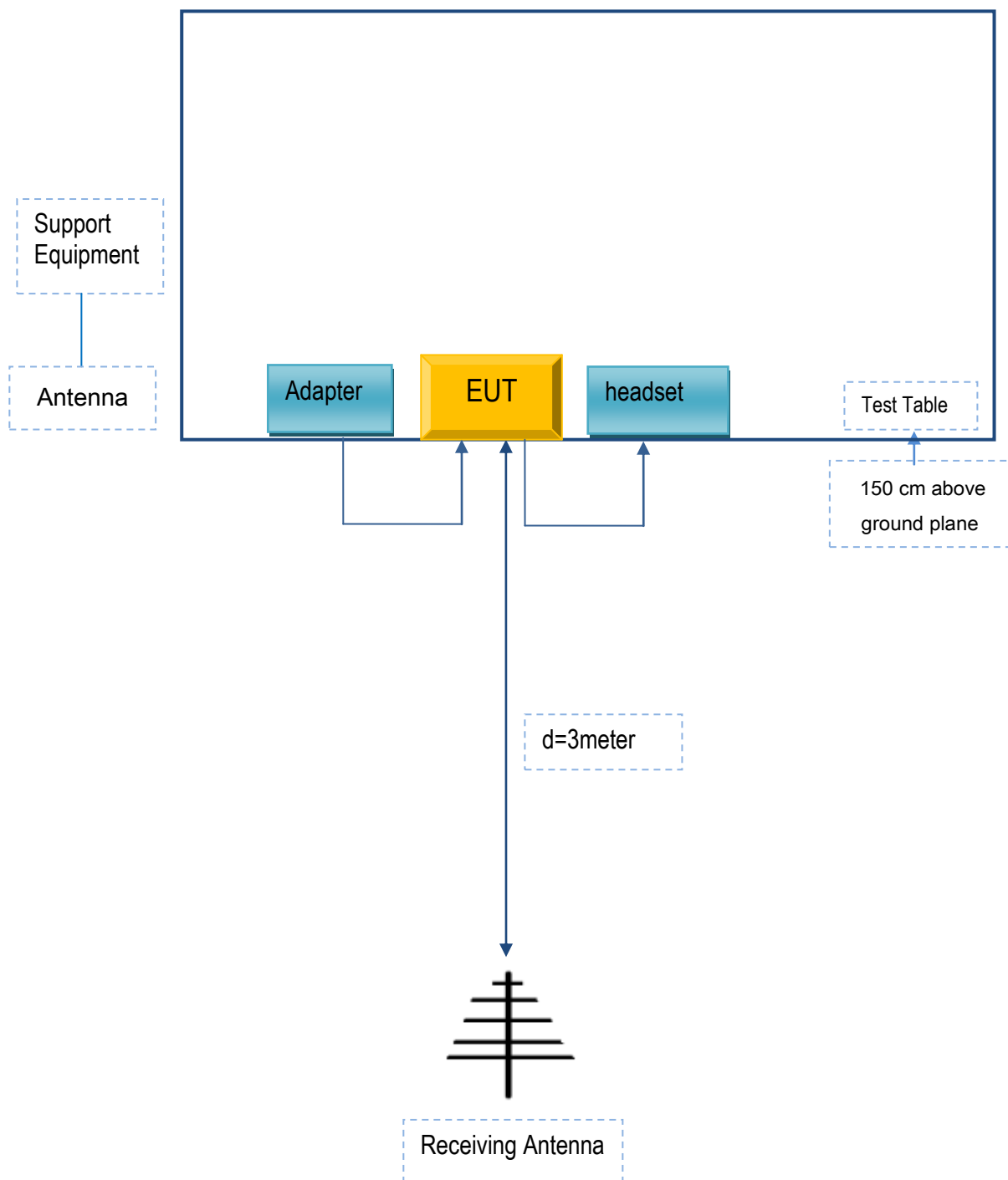


Radiated Spurious Emissions Test Setup Above
1GHz

Annex C. TEST SETUP AND SUPPORTING EQUIPMENT

Annex C.ii. TEST SET UP BLOCK

Block Configuration Diagram for Radiated Emissions



Annex C. ii. SUPPORTING EQUIPMENT DESCRIPTION

The following is a description of supporting equipment and details of cables used with the EUT.

Supporting Equipment:

Manufacturer	Equipment Description	Model	Serial No
BLU Products, Inc.	Adapter	TPA-46050150UU	N/A
BLU Products, Inc.	headset	HORIZON R2	N/A

Supporting Cable:

Cable type	Shield Type	Ferrite Core	Length	Serial No
USB Cable	Un-shielding	No	0.8m	N/A

Annex C.ii. EUT OPERATING CONKITIONS

N/A

Annex D. User Manual / Block Diagram / Schematics / Partlist

Please see the attachment

Annex E. DECLARATION OF SIMILARITY

N/A