



FCC SAR Test Report

APPLICANT : CT Asia
EQUIPMENT : GSM mobile phone
BRAND NAME : BLU
MODEL NAME : Spark TV
FCC ID : YHLBLUSPARKTV
STANDARD : FCC 47 CFR Part 2 (2.1093)
ANSI/IEEE C95.1-1992
IEEE 1528-2003
FCC OET Bulletin 65 Supplement C (Edition 01-01)

The product was completely tested on Jan. 21, 2013. We, SPORTON INTERNATIONAL (KUNSHAN) INC., would like to declare that the tested sample has been evaluated in accordance with the procedures and shown the compliance with the applicable technical standards.

The test results in this report apply exclusively to the tested model / sample. Without written approval of SPORTON INTERNATIONAL (KUNSHAN) INC., the test report shall not be reproduced except in full.

Reviewed by:

Jones Tsai / Manager



SPORTON INTERNATIONAL (KUNSHAN) INC.
No. 3-2, PingXiang Road, Kunshan, Jiangsu Province, P.R.C.



Table of Contents

1. Statement of Compliance4
2. Administration Data5
2.1 Testing Laboratory5
2.2 Applicant5
2.3 Manufacturer5
2.4 Application Details5
3. General Information6
3.1 Description of Equipment Under Test (EUT)6
3.2 Maximum RF output power among production units6
3.3 Product Photos7
3.4 Applied Standard7
3.5 Device Category and SAR Limits7
3.6 Test Conditions7
4. Specific Absorption Rate (SAR)8
4.1 Introduction8
4.2 SAR Definition8
5. SAR Measurement System9
5.1 E-Field Probe10
5.2 Data Acquisition Electronics (DAE)10
5.3 Robot11
5.4 Measurement Server11
5.5 Phantom12
5.6 Device Holder12
5.7 Data Storage and Evaluation13
5.8 Test Equipment List15
6. Tissue Simulating Liquids16
7. SAR System Validation17
7.1 Purpose of System Performance check17
7.2 System Setup17
7.3 SAR System Verification Results18
8. EUT Testing Position19
8.1 Define two imaginary lines on the handset19
8.2 Cheek Position20
8.3 Tilted Position20
8.4 Body Worn Position21
9. Measurement Procedures22
9.1 Spatial Peak SAR Evaluation22
9.2 Power Reference Measurement23
9.3 Area & Zoom Scan Procedures23
9.4 Volume Scan Procedures24
9.5 SAR Averaged Methods24
9.6 Power Drift Monitoring24
10. Exposure Positions Consideration25
11. Conducted RF Output Power (Unit: dBm)26
12. SAR Test Results28
12.1 Test Records for Head SAR Test28
12.2 Test Records for Body-worn SAR Test29
12.3 Repeated SAR Measurement29
12.4 Highest SAR Plot29
12.5 Simultaneous Multi-band Transmission Analysis32
13. Uncertainty Assessment34
14. References36
Appendix A. Plots of System Performance Check
Appendix B. Plots of SAR Measurement
Appendix C. DASY Calibration Certificate
Appendix D. Product Photos
Appendix E. Test Setup Photos



Revision History

REPORT NO.	VERSION	DESCRIPTION	ISSUED DATE
FA311501	Rev. 01	Initial issue of report	Mar. 05, 2013

1. Statement of Compliance

The maximum results of Specific Absorption Rate (SAR) found during testing for **CT Asia, DUT: GSM mobile phone, Brand Name: BLU, Model Name: Spark TV** are as follows.

<Highest Reported standalone SAR Summary>

Exposure Position	Frequency Band	Highest Reported 1g-SAR (W/kg)	Equipment Class	Highest Reported 1g-SAR (W/kg)
Head	GSM850	0.41	PCE	1.11
	GSM1900	1.11		
Body-worn (1.5cm Gap)	GSM850	0.45	PCE	0.45
	GSM1900	0.34		

<Highest Simultaneous transmission SAR>

Frequency Band	Equipment Class	Exposure Position	Highest Reported Simultaneous Transmission 1g-SAR (W/kg)
GSM1900	PCE	Head	1.38
Bluetooth 2.4GHz	DSS		

Remark: The highest simultaneous transmission is scalar summation of reported standalone SAR per FCC KDB 690783 D01 v01r02, and scalar SAR summation of all possible simultaneous transmission scenarios are < 1.6W/kg.

This device is in compliance with Specific Absorption Rate (SAR) for general population/uncontrolled exposure limits (1.6 W/kg) specified in FCC 47 CFR part 2 (2.1093) and ANSI/IEEE C95.1-1992, and had been tested in accordance with the measurement methods and procedures specified in IEEE 1528-2003 and FCC OET Bulletin 65 Supplement C (Edition 01-01).



2. Administration Data

2.1 Testing Laboratory

Test Site	SPORTON INTERNATIONAL (KUNSHAN) INC.
Test Site Location	No. 3-2, PingXiang Road, Kunshan, Jiangsu Province, P.R.C. TEL: +86-0512-5790-0158 FAX: +86-0512-5790-0958

2.2 Applicant

Company Name	CT Asia
Address	Unit 01, 15/F, Seaview Centre, 139-141 Hoi bun road, Kwun Tong, Kowloon, Hongkong

2.3 Manufacturer

Company Name	Zechin Communications Co., Ltd.
Address	Unit804, 8th Floor Desay Tech Building Gaoxin Road South, Nanshan District Shenzhen, China

2.4 Application Details

Date of Start during the Test	Jan. 21, 2013
Date of End during the Test	Jan. 21, 2013

3. General Information

3.1 Description of Equipment Under Test (EUT)

Product Feature & Specification	
DUT	GSM mobile phone
Brand Name	BLU
Model Name	Spark TV
FCC ID	YHLBLUSPARKTV
TX Frequency	GSM850: 824.2 MHz ~ 848.8 MHz GSM1900: 1850.2 MHz ~ 1909.8 MHz Bluetooth: 2402 MHz ~ 2480 MHz
Antenna Type	WWAN: Fixed Internal Antenna Bluetooth: PIFA Antenna
HW Version	X565-MB-V0.2
SW Version	BLU_S130T_V20_GENERIC
Uplink Modulations	GSM: GMSK GPRS: GMSK EDGE: GMSK / 8PSK (Downlink Only) Bluetooth BDR : GFSK Bluetooth EDR : $\pi/4$ -DQPSK, 8-DPSK
Remark: The above EUT's information was declared by manufacturer. Please refer to the specifications or user's manual for more detailed description.	

3.2 Maximum RF output power among production units

Mode	GSM 850	GSM 1900
	Average power(dBm)	
GSM (GMSK, 1 Tx slot)	32.5	30
GPRS (GMSK, 1 Tx slot)	32	29.5
GPRS (GMSK, 2 Tx slots)	31.5	29
GPRS (GMSK, 3 Tx slots)	30	27.5
GPRS (GMSK, 4 Tx slots)	29	26.5

Bluetooth average power(dBm)			
Mode/Band	1Mbps (GMSK)	2Mbps ($\pi/4$ -DQPSK)	3Mbps (8-DPSK)
2.4 GHz Bluetooth	8	5.5	5.5



3.3 Product Photos

Please refer to Appendix D.

3.4 Applied Standard

The Specific Absorption Rate (SAR) testing specification, method, and procedure for this device is in accordance with the following standards:

- FCC 47 CFR Part 2 (2.1093)
- ANSI/IEEE C95.1-1992
- IEEE 1528-2003
- FCC OET Bulletin 65 Supplement C (Edition 01-01)
- FCC KDB 447498 D01 v05
- FCC KDB 648474 D04v01
- FCC KDB 865664 D01 v01

3.5 Device Category and SAR Limits

This device belongs to portable device category because its radiating structure is allowed to be used within 20 centimeters of the body of the user. Limit for General Population/Uncontrolled exposure should be applied for this device, it is 1.6 W/kg as averaged over any 1 gram of tissue.

3.6 Test Conditions

3.6.1 Ambient Condition

Ambient Temperature	20 to 24 °C
Humidity	< 60 %

3.6.2 Test Configuration

For WWAN SAR testing, the device was controlled by using a base station emulator. Communication between the device and the emulator was established by air link. The distance between the EUT and the antenna of the emulator is larger than 50 cm and the output power radiated from the emulator antenna is at least 30 dB smaller than the output power of EUT.

4. Specific Absorption Rate (SAR)

4.1 Introduction

SAR is related to the rate at which energy is absorbed per unit mass in an object exposed to a radio field. The SAR distribution in a biological body is complicated and is usually carried out by experimental techniques or numerical modeling. The standard recommends limits for two tiers of groups, occupational/controlled and general population/uncontrolled, based on a person's awareness and ability to exercise control over his or her exposure. In general, occupational/controlled exposure limits are higher than the limits for general population/uncontrolled.

4.2 SAR Definition

The SAR definition is the time derivative (rate) of the incremental energy (dW) absorbed by (dissipated in) an incremental mass (dm) contained in a volume element (dv) of a given density (ρ). The equation description is as below:

$$\text{SAR} = \frac{d}{dt} \left(\frac{dW}{dm} \right) = \frac{d}{dt} \left(\frac{dW}{\rho dv} \right)$$

SAR is expressed in units of Watts per kilogram (W/kg)

SAR measurement can be either related to the temperature elevation in tissue by

$$\text{SAR} = c \left(\frac{\delta T}{\delta t} \right)$$

Where: C is the specific heat capacity, δT is the temperature rise and δt is the exposure duration, or related to the electrical field in the tissue by

$$\text{SAR} = \frac{\sigma |E|^2}{\rho}$$

Where: σ is the conductivity of the tissue, ρ is the mass density of the tissue and E is the RMS electrical field strength.

However for evaluating SAR of low power transmitter, electrical field measurement is typically applied.

5. SAR Measurement System

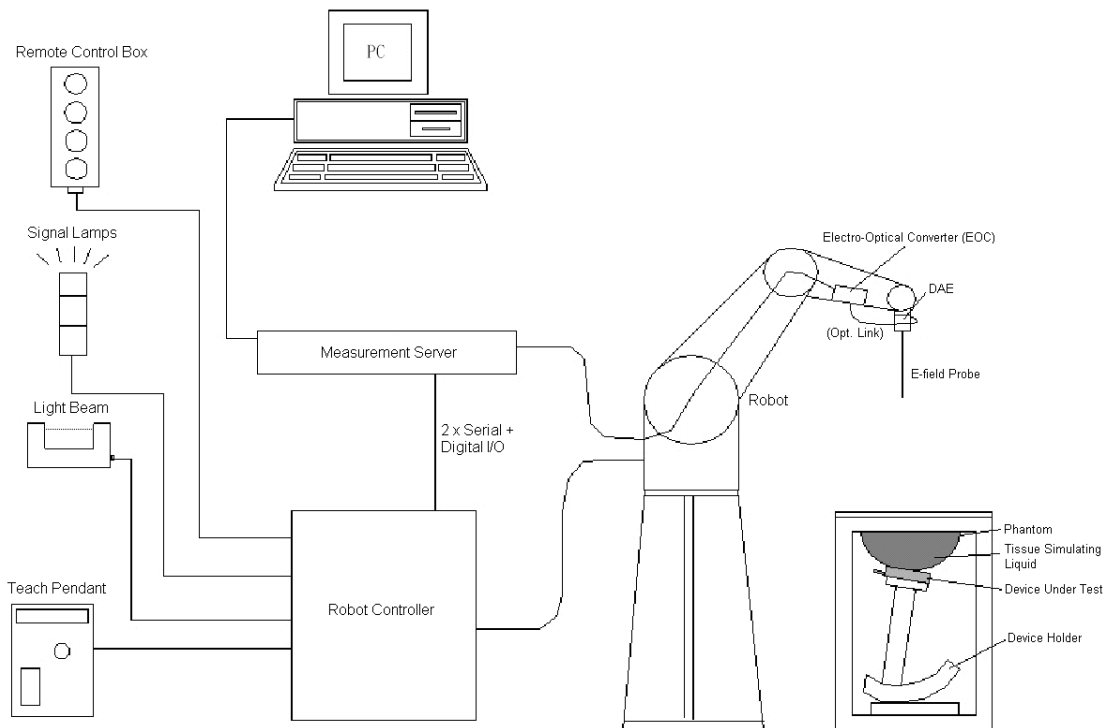


Fig 5.1 SPEAG DASY System Configurations

The DASY system for performance compliance tests is illustrated above graphically. This system consists of the following items:

- A standard high precision 6-axis robot with controller, a teach pendant and software
- A data acquisition electronic (DAE) attached to the robot arm extension
- A dosimetric probe equipped with an optical surface detector system
- The electro-optical converter (EOC) performs the conversion between optical and electrical signals
- A measurement server performs the time critical tasks such as signal filtering, control of the robot operation and fast movement interrupts.
- A probe alignment unit which improves the accuracy of the probe positioning
- A computer operating Windows XP
- DASY software
- Remote control with teach pendant and additional circuitry for robot safety such as warning lamps, etc.
- The SAM twin phantom
- A device holder
- Tissue simulating liquid
- Dipole for evaluating the proper functioning of the system

Component details are described in in the following sub-sections.

5.1 E-Field Probe

The SAR measurement is conducted with the dosimetric probe (manufactured by SPEAG). The probe is specially designed and calibrated for use in liquid with high permittivity. The dosimetric probe has special calibration in liquid at different frequency. This probe has a built in optical surface detection system to prevent from collision with phantom.

5.1.1 E-Field Probe Specification

<EX3DV4 Probe>

Construction	Symmetrical design with triangular core Built-in shielding against static charges PEEK enclosure material (resistant to organic solvents, e.g., DGBE)
Frequency	10 MHz to 6 GHz; Linearity: ± 0.2 dB
Directivity	± 0.3 dB in HSL (rotation around probe axis) ± 0.5 dB in tissue material (rotation normal to probe axis)
Dynamic Range	10 μ W/g to 100 mW/g; Linearity: ± 0.2 dB (noise: typically < 1 μ W/g)
Dimensions	Overall length: 330 mm (Tip: 20 mm) Tip diameter: 2.5 mm (Body: 12 mm) Typical distance from probe tip to dipole centers: 1 mm

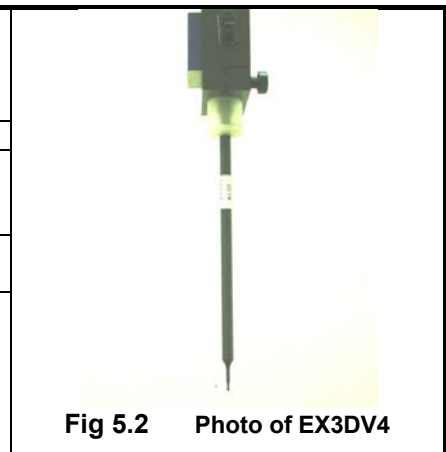


Fig 5.2 Photo of EX3DV4

5.1.2 E-Field Probe Calibration

Each probe needs to be calibrated according to a dosimetric assessment procedure with accuracy better than $\pm 10\%$. The spherical isotropy shall be evaluated and within ± 0.25 dB. The sensitivity parameters (NormX, NormY, and NormZ), the diode compression parameter (DCP) and the conversion factor (ConvF) of the probe are tested. The calibration data can be referred to appendix C of this report.

5.2 Data Acquisition Electronics (DAE)

The data acquisition electronics (DAE) consists of a highly sensitive electrometer-grade preamplifier with auto-zeroing, a channel and gain-switching multiplexer, a fast 16 bit AD-converter and a command decoder and control logic unit. Transmission to the measurement server is accomplished through an optical downlink for data and status information as well as an optical uplink for commands and the clock. The input impedance of the DAE is 200 MOhm; the inputs are symmetrical and floating. Common mode rejection is above 80 dB.



Fig 5.3 Photo of DAE

5.3 Robot

The SPEAG DASY system uses the high precision robots (DASY5: TX90XL) type from Stäubli SA (France). For the 6-axis controller system, the robot controller version (DASY5: CS8c) from Stäubli is used. The Stäubli robot series have many features that are important for our application:

- High precision (repeatability ± 0.035 mm)
- High reliability (industrial design)
- Jerk-free straight movements
- Low ELF interference (the closed metallic construction shields against motor control fields)



Fig 5.4 Photo of DASY5

5.4 Measurement Server

The measurement server is based on a PC/104 CPU board with CPU (DASY5: 400 MHz, Intel Celeron), chipdisk (DASY5: 128 MB), RAM (DASY5: 128 MB). The necessary circuits for communication with the DAE electronic box, as well as the 16 bit AD converter system for optical detection and digital I/O interface are contained on the DASY I/O board, which is directly connected to the PC/104 bus of the CPU board.

The measurement server performs all the real-time data evaluation for field measurements and surface detection, controls robot movements and handles safety operations.



Fig 5.5 Photo of Server for DASY5

5.5 Phantom

<SAM Twin Phantom>

Shell Thickness	2 ± 0.2 mm; Center ear point: 6 ± 0.2 mm
Filling Volume	Approx. 25 liters
Dimensions	Length: 1000 mm; Width: 500 mm; Height: adjustable feet
Measurement Areas	Left Hand, Right Hand, Flat Phantom



Fig 5.6 Photo of SAM Phantom

The bottom plate contains three pair of bolts for locking the device holder. The device holder positions are adjusted to the standard measurement positions in the three sections. A white cover is provided to tap the phantom during off-periods to prevent water evaporation and changes in the liquid parameters. On the phantom top, three reference markers are provided to identify the phantom position with respect to the robot.

5.6 Device Holder

<Device Holder for SAM Twin Phantom>

The SAR in the phantom is approximately inversely proportional to the square of the distance between the source and the liquid surface. For a source at 5 mm distance, a positioning uncertainty of ± 0.5 mm would produce a SAR uncertainty of ± 20 %. Accurate device positioning is therefore crucial for accurate and repeatable measurements. The positions in which the devices must be measured are defined by the standards.

The DASY device holder is designed to cope with different positions given in the standard. It has two scales for the device rotation (with respect to the body axis) and the device inclination (with respect to the line between the ear reference points). The rotation center for both scales is the ear reference point (ERP). Thus the device needs no repositioning when changing the angles.

The DASY device holder is constructed of low-loss POM material having the following dielectric parameters: relative permittivity $\epsilon = 3$ and loss tangent $\delta = 0.02$. The amount of dielectric material has been reduced in the closest vicinity of the device, since measurements have suggested that the influence of the clamp on the test results could thus be lowered.



Fig 5.7 Device Holder



5.7 Data Storage and Evaluation

5.7.1 Data Storage

The DASY software stores the assessed data from the data acquisition electronics as raw data (in microvolt readings from the probe sensors), together with all the necessary software parameters for the data evaluation (probe calibration data, liquid parameters and device frequency and modulation data) in measurement files. The post-processing software evaluates the desired unit and format for output each time the data is visualized or exported. This allows verification of the complete software setup even after the measurement and allows correction of erroneous parameter settings. For example, if a measurement has been performed with an incorrect crest factor parameter in the device setup, the parameter can be corrected afterwards and the data can be reevaluated.

The measured data can be visualized or exported in different units or formats, depending on the selected probe type (e.g., [V/m], [A/m], [mW/g]). Some of these units are not available in certain situations or give meaningless results, e.g., a SAR-output in a non-lose media, will always be zero. Raw data can also be exported to perform the evaluation with other software packages.

5.7.2 Data Evaluation

The DASY post-processing software (SEMCAD) automatically executes the following procedures to calculate the field units from the microvolt readings at the probe connector. The parameters used in the evaluation are stored in the configuration modules of the software :

Probe parameters :	- Sensitivity	Norm _i , a _{i0} , a _{i1} , a _{i2}
	- Conversion factor	ConvF _i
	- Diode compression point	dcp _i
Device parameters :	- Frequency	f
	- Crest factor	cf
Media parameters :	- Conductivity	σ
	- Density	ρ

These parameters must be set correctly in the software. They can be found in the component documents or they can be imported into the software from the configuration files issued for the DASY components. In the direct measuring mode of the multi-meter option, the parameters of the actual system setup are used. In the scan visualization and export modes, the parameters stored in the corresponding document files are used.

The first step of the evaluation is a linearization of the filtered input signal to account for the compression characteristics of the detector diode. The compensation depends on the input signal, the diode type and the DC-transmission factor from the diode to the evaluation electronics. If the exciting field is pulsed, the crest factor of the signal must be known to correctly compensate for peak power.

The formula for each channel can be given as :

$$V_i = U_i + U_i^2 \cdot \frac{cf}{dcp_i}$$

with V_i = compensated signal of channel i , ($i = x, y, z$)
 U_i = input signal of channel i , ($i = x, y, z$)
 cf = crest factor of exciting field (DASY parameter)
 dcp_i = diode compression point (DASY parameter)

From the compensated input signals, the primary field data for each channel can be evaluated :

$$\text{E-field Probes : } E_i = \sqrt{\frac{V_i}{\text{Norm}_i \cdot \text{ConvF}}}$$

$$\text{H-field Probes : } H_i = \sqrt{V_i \cdot \frac{a_{i0} + a_{i1}f + a_{i2}f^2}{f}}$$

with V_i = compensated signal of channel i , ($i = x, y, z$)
 Norm_i = sensor sensitivity of channel i , ($i = x, y, z$), $\mu\text{V}/(\text{V/m})^2$ for E-field Probes
 ConvF = sensitivity enhancement in solution
 a_{ij} = sensor sensitivity factors for H-field probes
 f = carrier frequency [GHz]
 E_i = electric field strength of channel i in V/m
 H_i = magnetic field strength of channel i in A/m

The RSS value of the field components gives the total field strength (Hermitian magnitude) :

$$E_{\text{tot}} = \sqrt{E_x^2 + E_y^2 + E_z^2}$$

The primary field data are used to calculate the derived field units.

$$\text{SAR} = E_{\text{tot}}^2 \cdot \frac{\sigma}{\rho \cdot 1000}$$

with SAR = local specific absorption rate in mW/g
 E_{tot} = total field strength in V/m
 σ = conductivity in [mho/m] or [Siemens/m]
 ρ = equivalent tissue density in g/cm^3

Note that the density is set to 1, to account for actual head tissue density rather than the density of the tissue simulating liquid.



5.8 Test Equipment List

Manufacturer	Name of Equipment	Type/Model	Serial Number	Calibration	
				Last Cal.	Due Date
SPEAG	835MHz System Validation Kit	D835V2	4d091	Nov. 18, 2011	Nov. 16, 2013
SPEAG	1900MHz System Validation Kit	D1900V2	5d118	Nov. 21, 2011	Nov. 16, 2013
SPEAG	Data Acquisition Electronics	DAE4	1210	Dec. 05, 2012	Dec. 04, 2013
SPEAG	Dosimetric E-Field Probe	EX3DV4	3857	Jun. 20, 2012	Jun. 19, 2013
SPEAG	SAM Twin Phantom	QD 000 P40 CB	TP-1477	NCR	NCR
SPEAG	SAM Twin Phantom	QD 000 P40 CB	TP-1479	NCR	NCR
SPEAG	Phone Positioner	N/A	N/A	NCR	NCR
Agilent	Wireless Communication Test Set	E5515C	MY48367160	Oct. 25, 2012	Oct. 24, 2013
R&S	Universal Radio Communication Tester	CMU200	116456	Sep. 19, 2012	Sep. 18, 2013
Agilent	ENA Series Network Analyzer	E5071C	MY46111157	Apr. 13, 2012	Apr. 12, 2013
Agilent	Power Meter	E4416A	MY45101555	Aug. 22, 2012	Aug. 21, 2013
Agilent	Power Sensor	E9327A	MY44421198	Aug. 22, 2012	Aug. 21, 2013
Agilent	Dual Directional Coupler	778D	50422	Note 4	-
Woken	Attenuator 1	WK0602-XX	N/A	Note 4	-
PE	Attenuator 2	PE7005-10	N/A	Note 4	-
PE	Attenuator 3	PE7005-3	N/A	Note 4	-
Agilent	Dielectric Probe Kit	85070D	US01440205	Note 5	-
AR	Power Amplifier	5S1G4M2	0328767	Note 6	-
R&S	Spectrum Analyzer	FSP30	101399	Jun. 01, 2012	May 31, 2013

Table 5.1 Test Equipment List

Note:

1. The calibration certificate of DASY can be referred to appendix C of this report.
2. Referring to KDB 865664 D01v01, the dipole calibration interval can be extended to 3 years with justification. The dipoles are also not physically damaged, or repaired during the interval.
3. The justification data of dipole D835V2, SN: 4d091, D1900V2, SN: 5d118 can be found in appendix C. The return loss is < -20dB, within 20% of prior calibration, the impedance is within 5 ohm of prior calibration.
4. The Insertion Loss calibration of Dual Directional Coupler and Attenuator were characterized via the network analyzer and compensated during system check.
5. The dielectric probe kit was calibrated via the network analyzer, with the specified procedure (calibrated in pure water) and calibration kit (standard) short circuit, before the dielectric measurement. The specific procedure and calibration kit are provided by Agilent.
6. In system check we need to monitor the level on the power meter, and adjust the power amplifier level to have precise power level to the dipole; the measured SAR will be normalized to 1W input power according to the ratio of 1W to the input power to the dipole. For system check, the calibration of the power amplifier is deemed not critically required for correct measurement; the power meter is critical and we do have calibration for it
7. Attenuator 1 insertion loss is calibrated by the network Analyzer, which the calibration is valid, before system check.

6. Tissue Simulating Liquids

For the measurement of the field distribution inside the SAM phantom with DASY, the phantom must be filled with around 25 liters of homogeneous body tissue simulating liquid. For head SAR testing, the liquid height from the ear reference point (ERP) of the phantom to the liquid top surface is larger than 15 cm, which is shown in Fig. 6.1. For body SAR testing, the liquid height from the center of the flat phantom to the liquid top surface is larger than 15 cm, which is shown in Fig. 6.2.



Fig 6.1 Photo of Liquid Height for Head SAR



Fig 6.2 Photo of Liquid Height for Body SAR

The following table gives the recipes for tissue simulating liquid.

Frequency (MHz)	Water (%)	Sugar (%)	Cellulose (%)	Salt (%)	Preventol (%)	DGBE (%)	Conductivity (σ)	Permittivity (ϵ_r)
For Head								
835	40.3	57.9	0.2	1.4	0.2	0	0.90	41.5
1800, 1900, 2000	55.2	0	0	0.3	0	44.5	1.40	40.0
For Body								
835	50.8	48.2	0	0.9	0.1	0	0.97	55.2
1800, 1900, 2000	70.2	0	0	0.4	0	29.4	1.52	53.3

Table 6.1 Recipes of Tissue Simulating Liquid

The dielectric parameters of the liquids were verified prior to the SAR evaluation using an Agilent 85070D Dielectric Probe Kit and an Agilent Network Analyzer.

The following table shows the measuring results for simulating liquid.

Frequency (MHz)	Liquid Type	Liquid Temp. ($^{\circ}\text{C}$)	Conductivity (σ)	Permittivity (ϵ_r)	Conductivity Target (σ)	Permittivity Target (ϵ_r)	Delta (σ) (%)	Delta (ϵ_r) (%)	Limit (%)	Date
835	Head	21.5	0.884	41.016	0.90	41.5	-1.78	-1.17	± 5	Jan. 21, 2013
1900	Head	21.2	1.424	38.917	1.40	40.0	1.71	-2.71	± 5	Jan. 21, 2013
835	Body	21.3	0.983	54.847	0.97	55.2	1.34	-0.64	± 5	Jan. 21, 2013
1900	Body	21.1	1.544	53.236	1.52	53.3	1.58	-0.12	± 5	Jan. 21, 2013

Table 6.2 Measuring Results for Simulating Liquid

7. SAR System Validation

Each DASY system is equipped with one or more system validation kits. These units, together with the predefined measurement procedures within the DASY software, enable the user to conduct the system performance check and system validation. System validation kit includes a dipole, tripod holder to fix it underneath the flat phantom and a corresponding distance holder.

7.1 Purpose of System Performance check

The system performance check verifies that the system operates within its specifications. System and operator errors can be detected and corrected. It is recommended that the system performance check be performed prior to any usage of the system in order to guarantee reproducible results. The system performance check uses normal SAR measurements in a simplified setup with a well characterized source. This setup was selected to give a high sensitivity to all parameters that might fail or vary over time. The system check does not intend to replace the calibration of the components, but indicates situations where the system uncertainty is exceeded due to drift or failure.

7.2 System Setup

In the simplified setup for system evaluation, the EUT is replaced by a calibrated dipole and the power source is replaced by a continuous wave that comes from a signal generator. The calibrated dipole must be placed beneath the flat phantom section of the SAM twin phantom with the correct distance holder. The distance holder should touch the phantom surface with a light pressure at the reference marking and be oriented parallel to the long side of the phantom. The equipment setup is shown below:

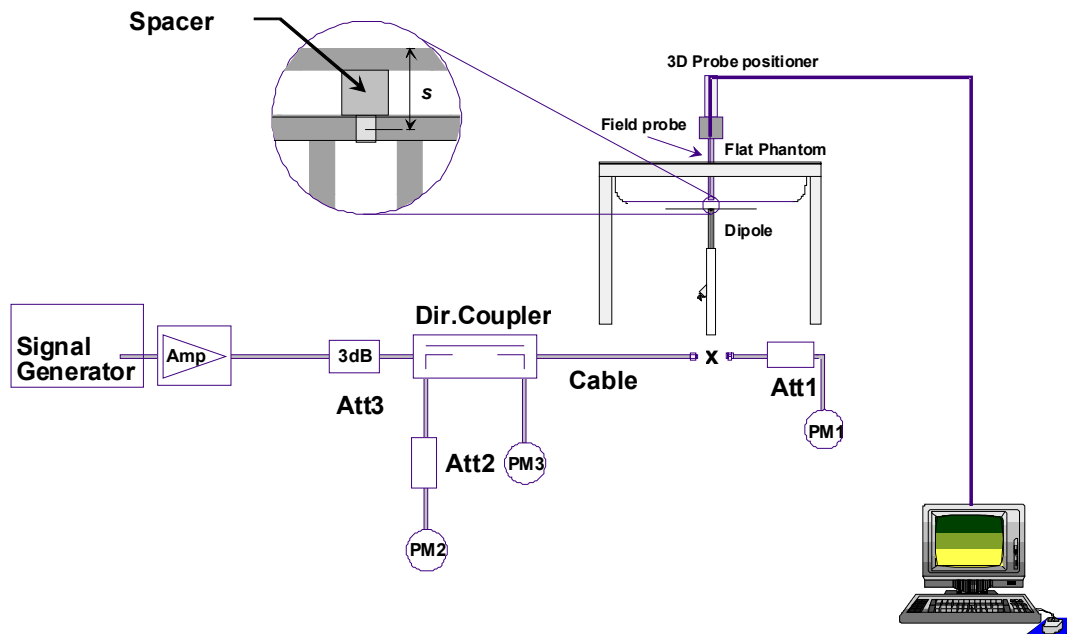


Fig 7.1 System Setup for System Evaluation

1. Signal Generator
2. Amplifier
3. Directional Coupler
4. Power Meter
5. Calibrated Dipole



Fig 7.2 Photo of Dipole Setup

7.3 SAR System Verification Results

Comparing to the original SAR value provided by SPEAG, the verification data should be within its specification of 10 %. Table 7.1 shows the target SAR and measured SAR after normalized to 1W input power. The table below indicates the system performance check can meet the variation criterion and the plots can be referred to Appendix A of this report.

Date	Frequency (MHz)	Liquid Type	Power fed onto reference dipole (mW)	Target SAR (W/kg)	Measured SAR (W/kg)	Normalized SAR (W/kg)	Deviation (%)
Jan. 21, 2013	835	Head	250	9.40	2.27	9.08	-3.40
Jan. 21, 2013	1900	Head	250	40.3	9.99	39.96	-0.84
Jan. 21, 2013	835	Body	250	9.42	2.27	9.08	-3.61
Jan. 21, 2013	1900	Body	250	41.8	10.1	40.4	-3.35

Table 7.1 Target and Measurement SAR after Normalized

8. EUT Testing Position

This EUT was tested in six different positions. They are right cheek, right tilted, left cheek, left tilted, Front of the DUT with phantom 1.5 cm gap, and Back of the DUT with phantom 1.5 cm gap, as illustrated below.

8.1 Define two imaginary lines on the handset

- The vertical centerline passes through two points on the front side of the handset - the midpoint of the width w_t of the handset at the level of the acoustic output, and the midpoint of the width w_b of the bottom of the handset.
- The horizontal line is perpendicular to the vertical centerline and passes through the center of the acoustic output. The horizontal line is also tangential to the face of the handset at point A.
- The two lines intersect at point A. Note that for many handsets, point A coincides with the center of the acoustic output; however, the acoustic output may be located elsewhere on the horizontal line. Also note that the vertical centerline is not necessarily parallel to the front face of the handset, especially for clamshell handsets, handsets with flip covers, and other irregularly shaped handsets.

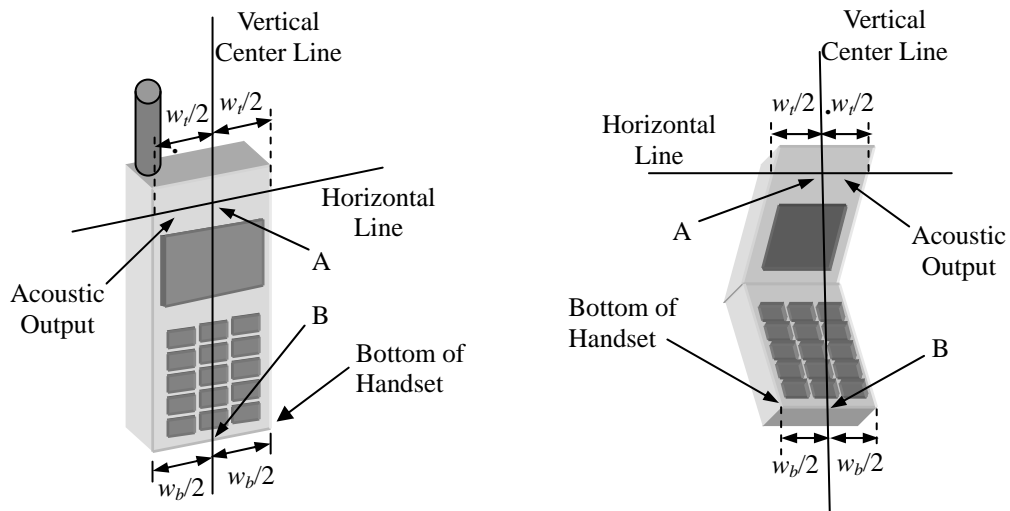


Fig 8.1 Illustration for Handset Vertical and Horizontal Reference Lines

8.2 Cheek Position

- (a) To position the device with the vertical center line of the body of the device and the horizontal line crossing the center piece in a plane parallel to the sagittal plane of the phantom. While maintaining the device in this plane, align the vertical center line with the reference plane containing the three ear and mouth reference point (M: Mouth, RE: Right Ear, and LE: Left Ear) and align the center of the ear piece with the line RE-LE.
- (b) To move the device towards the phantom with the ear piece aligned with the line LE-RE until the phone touched the ear. While maintaining the device in the reference plane and maintaining the phone contact with the ear, move the bottom of the phone until any point on the front side is in contact with the cheek of the phantom or until contact with the ear is lost (see Fig. 8.2).

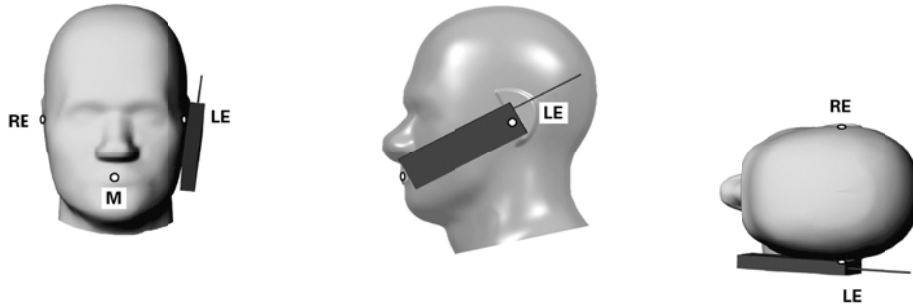


Fig 8.2 Illustration for Cheek Position

8.3 Tilted Position

- (a) To position the device in the “cheek” position described above.
- (b) While maintaining the device the reference plane described above and pivoting against the ear, moves it outward away from the mouth by an angle of 15 degrees or until contact with the ear is lost (see Fig. 8.3).

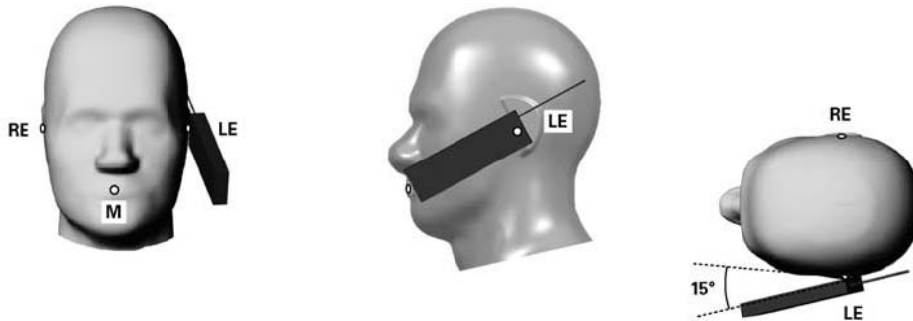


Fig 8.3 Illustration for Tilted Position

8.4 Body Worn Position

- (a) To position the device parallel to the phantom surface with either keypad up or down.
- (b) To adjust the device parallel to the flat phantom.
- (c) To adjust the distance between the device surface and the flat phantom to 1.5 cm.

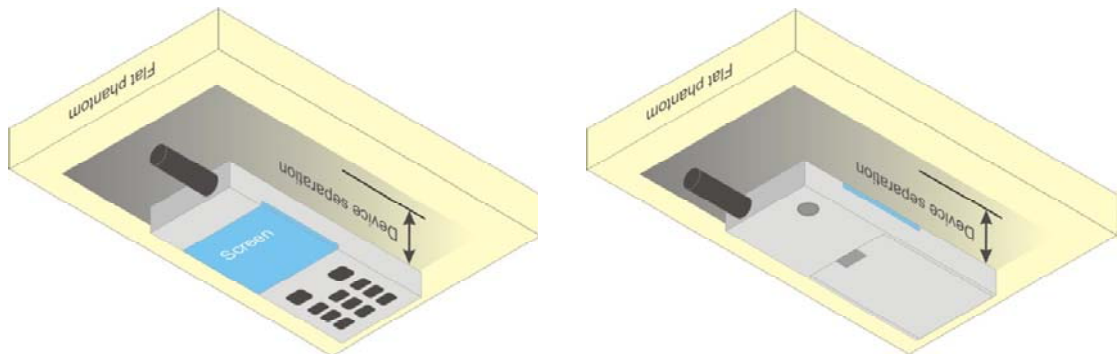


Fig 8.4 Illustration for Body Worn Position

<EUT Setup Photos>

Please refer to Appendix E for the test setup photos.

9. Measurement Procedures

The measurement procedures are as follows:

<Conducted power measurement>

- (a) For WWAN power measurement, use base station simulator to configure EUT WWAN transmission in conducted connection with RF cable, at maximum power in each supported wireless interface and frequency band.
- (b) Read the WWAN RF power level from the base station simulator.
- (c) For WLAN/BT power measurement, use engineering software to configure EUT WLAN/BT continuously transmission, at maximum RF power in each supported wireless interface and frequency band
- (d) Connect EUT RF port through RF cable to the power meter, and measure WLAN/BT output power

<SAR measurement>

- (a) Use base station simulator to configure EUT WWAN transmission in radiated connection, and engineering software to configure EUT WLAN/BT continuously transmission, at maximum RF power, in the highest power channel.
- (b) Place the EUT in the positions as Appendix E demonstrates.
- (c) Set scan area, grid size and other setting on the DASY software.
- (d) Measure SAR results for the highest power channel on each testing position.
- (e) Find out the largest SAR result on these testing positions of each band
- (f) Measure SAR results for other channels in worst SAR testing position if the reported SAR of highest power channel is larger than 0.8 W/kg

According to the test standard, the recommended procedure for assessing the peak spatial-average SAR value consists of the following steps:

- (a) Power reference measurement
- (b) Area scan
- (c) Zoom scan
- (d) Power drift measurement

9.1 Spatial Peak SAR Evaluation

The procedure for spatial peak SAR evaluation has been implemented according to the test standard. It can be conducted for 1g and 10g, as well as for user-specific masses. The DASY software includes all numerical procedures necessary to evaluate the spatial peak SAR value.

The base for the evaluation is a "cube" measurement. The measured volume must include the 1g and 10g cubes with the highest averaged SAR values. For that purpose, the center of the measured volume is aligned to the interpolated peak SAR value of a previously performed area scan.

The entire evaluation of the spatial peak values is performed within the post-processing engine (SEMCAD). The system always gives the maximum values for the 1g and 10g cubes. The algorithm to find the cube with highest averaged SAR is divided into the following stages:

- (a) Extraction of the measured data (grid and values) from the Zoom Scan
- (b) Calculation of the SAR value at every measurement point based on all stored data (A/D values and measurement parameters)
- (c) Generation of a high-resolution mesh within the measured volume
- (d) Interpolation of all measured values from the measurement grid to the high-resolution grid
- (e) Extrapolation of the entire 3-D field distribution to the phantom surface over the distance from sensor to surface
- (f) Calculation of the averaged SAR within masses of 1g and 10g

9.2 Power Reference Measurement

The Power Reference Measurement and Power Drift Measurements are for monitoring the power drift of the device under test in the batch process. The minimum distance of probe sensors to surface determines the closest measurement point to phantom surface. This distance cannot be smaller than the distance of sensor calibration points to probe tip as defined in the probe properties.

9.3 Area & Zoom Scan Procedures

First Area Scan is used to locate the approximate location(s) of the local peak SAR value(s). The measurement grid within an Area Scan is defined by the grid extent, grid step size and grid offset. Next, in order to determine the EM field distribution in a three-dimensional spatial extension, Zoom Scan is required. The Zoom Scan is performed around the highest E-field value to determine the averaged SAR-distribution over 10 g. Area scan and zoom scan resolution setting follows KDB 865664 D01v01 quoted below.

For any secondary peaks found in the area scan which are within 2 dB of the maximum peak and are not within this zoom scan, the zoom scan should be repeated

		≤ 3 GHz	> 3 GHz
Maximum distance from closest measurement point (geometric center of probe sensors) to phantom surface		5 ± 1 mm	½·δ·ln(2) ± 0.5 mm
Maximum probe angle from probe axis to phantom surface normal at the measurement location		30° ± 1°	20° ± 1°
Maximum area scan spatial resolution: Δx _{Area} , Δy _{Area}		≤ 2 GHz: ≤ 15 mm 2 – 3 GHz: ≤ 12 mm	3 – 4 GHz: ≤ 12 mm 4 – 6 GHz: ≤ 10 mm
		When the x or y dimension of the test device, in the measurement plane orientation, is smaller than the above, the measurement resolution must be ≤ the corresponding x or y dimension of the test device with at least one measurement point on the test device.	
Maximum zoom scan spatial resolution: Δx _{Zoom} , Δy _{Zoom}		≤ 2 GHz: ≤ 8 mm 2 – 3 GHz: ≤ 5 mm*	3 – 4 GHz: ≤ 5 mm* 4 – 6 GHz: ≤ 4 mm*
Maximum zoom scan spatial resolution, normal to phantom surface	uniform grid: Δz _{Zoom(n)}	≤ 5 mm	3 – 4 GHz: ≤ 4 mm 4 – 5 GHz: ≤ 3 mm 5 – 6 GHz: ≤ 2 mm
	graded grid Δz _{Zoom(1)} : between 1 st two points closest to phantom surface	≤ 4 mm	3 – 4 GHz: ≤ 3 mm 4 – 5 GHz: ≤ 2.5 mm 5 – 6 GHz: ≤ 2 mm
	Δz _{Zoom(n>1)} : between subsequent points	≤ 1.5·Δz _{Zoom(n-1)}	
Minimum zoom scan volume	x, y, z	≥ 30 mm	3 – 4 GHz: ≥ 28 mm 4 – 5 GHz: ≥ 25 mm 5 – 6 GHz: ≥ 22 mm
Note: δ is the penetration depth of a plane-wave at normal incidence to the tissue medium; see draft standard IEEE P1528-2011 for details. * When zoom scan is required and the <i>reported</i> SAR from the area scan based <i>I.g SAR estimation</i> procedures of KDB 447498 is ≤ 1.4 W/kg, ≤ 8 mm, ≤ 7 mm and ≤ 5 mm zoom scan resolution may be applied, respectively, for 2 GHz to 3 GHz, 3 GHz to 4 GHz and 4 GHz to 6 GHz.			



9.4 Volume Scan Procedures

The volume scan is used for assess overlapping SAR distributions for antennas transmitting in different frequency bands. It is equivalent to an oversized zoom scan used in standalone measurements. The measurement volume will be used to enclose all the simultaneous transmitting antennas. For antennas transmitting simultaneously in different frequency bands, the volume scan is measured separately in each frequency band. In order to sum correctly to compute the 1g aggregate SAR, the EUT remain in the same test position for all measurements and all volume scan use the same spatial resolution and grid spacing. When all volume scan were completed, the software, SEMCAD postprocessor can combine and subsequently superpose these measurement data to calculating the multiband SAR.

9.5 SAR Averaged Methods

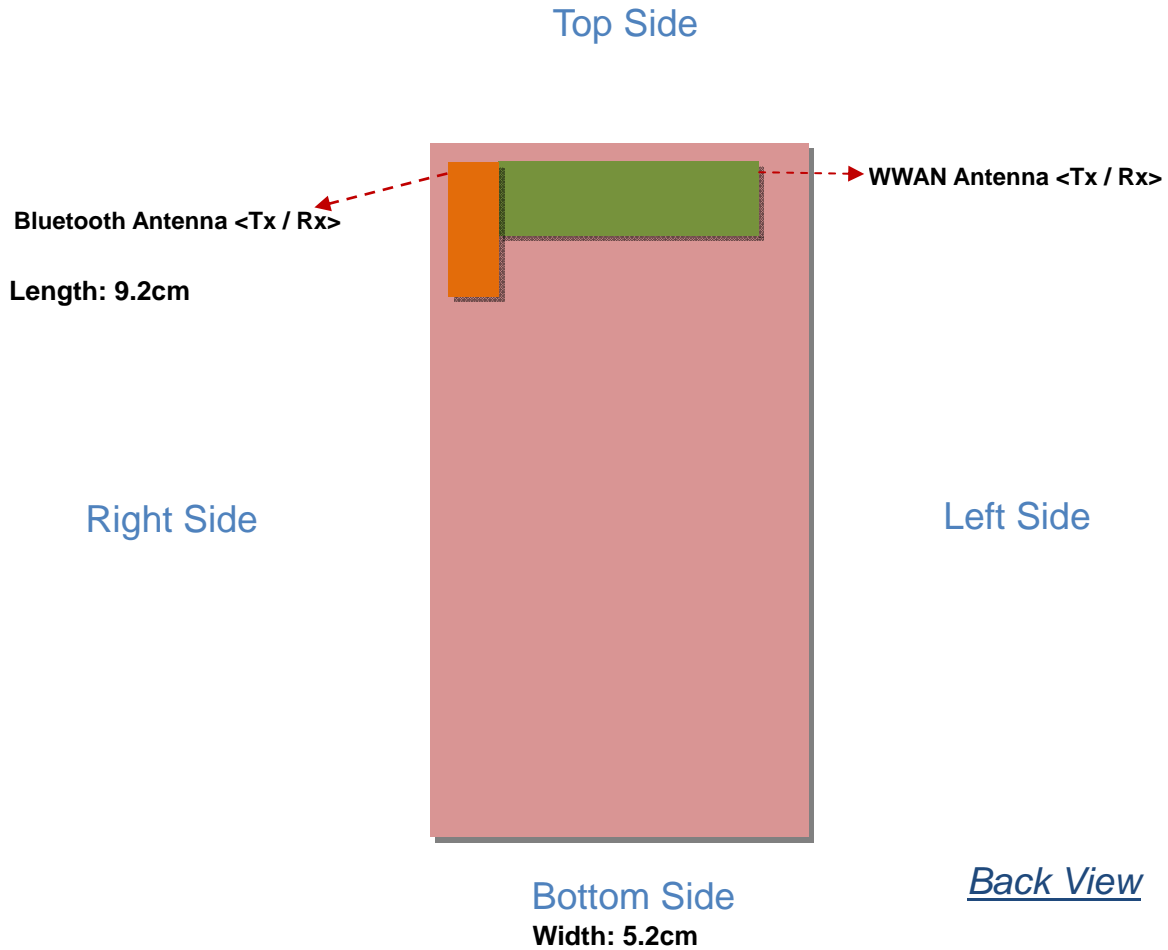
In DASYS, the interpolation and extrapolation are both based on the modified Quadratic Shepard's method. The interpolation scheme combines a least-square fitted function method and a weighted average method which are the two basic types of computational interpolation and approximation.

Extrapolation routines are used to obtain SAR values between the lowest measurement points and the inner phantom surface. The extrapolation distance is determined by the surface detection distance and the probe sensor offset. The uncertainty increases with the extrapolation distance. To keep the uncertainty within 1% for the 1 g and 10 g cubes, the extrapolation distance should not be larger than 5 mm.

9.6 Power Drift Monitoring

All SAR testing is under the EUT install full charged battery and transmit maximum output power. In DASYS measurement software, the power reference measurement and power drift measurement procedures are used for monitoring the power drift of EUT during SAR test. Both these procedures measure the field at a specified reference position before and after the SAR testing. The software will calculate the field difference in dB. If the power drifts more than 5%, the SAR will be retested.

10. Exposure Positions Consideration



Antennas	Wireless Interface
WWAN Antenna (Tx / Rx)	GSM850 GSM1900
Bluetooth Antenna (Tx / Rx)	Bluetooth

11. Conducted RF Output Power (Unit: dBm)

<GSM Conducted Power>

General Note:

1. Per KDB 447498 D01v05, the maximum output power channel is used for SAR testing and for further SAR test reduction.
2. The EUT do not support DTM function.

<SIM Card 1>

Band: GSM850 Channel	Burst Average Power (dBm)			Frame-Average Power (dBm)		
	128	189	251	128	189	251
Frequency (MHz)	824.2	836.4	848.8	824.2	836.4	848.8
GSM (GMSK, 1 Tx slot)	31.75	31.65	31.55	22.75	22.65	22.55
GPRS (GMSK, 1 Tx slot) – CS1	31.74	31.64	31.54	22.74	22.64	22.54
GPRS (GMSK, 2 Tx slots) – CS1	31.23	31.09	30.97	25.23	25.09	24.97
GPRS (GMSK, 3 Tx slots) – CS1	29.68	29.48	29.31	25.42	25.22	25.05
GPRS (GMSK, 4 Tx slots) – CS1	28.53	28.37	28.22	25.53	25.37	25.22

Remark: The frame-averaged power is linearly scaled the maximum burst averaged power over 8 time slots.
The calculated method are shown as below:
Frame-averaged power = Maximum burst averaged power (1 Tx Slot) - 9 dB
Frame-averaged power = Maximum burst averaged power (2 Tx Slots) - 6 dB
Frame-averaged power = Maximum burst averaged power (3 Tx Slots) - 4.26 dB
Frame-averaged power = Maximum burst averaged power (4 Tx Slots) - 3 dB

<SIM Card 2>

Band: GSM850 Channel	Burst Average Power (dBm)			Frame-Average Power (dBm)		
	128	189	251	128	189	251
Frequency (MHz)	824.2	836.4	848.8	824.2	836.4	848.8
GSM (GMSK, 1 Tx slot)	31.80	31.68	31.56	22.80	22.68	22.56
GPRS (GMSK, 1 Tx slot) – CS1	31.79	31.67	31.55	22.79	22.67	22.55
GPRS (GMSK, 2 Tx slots) – CS1	31.25	31.10	30.97	25.25	25.10	24.97
GPRS (GMSK, 3 Tx slots) – CS1	29.68	29.49	29.32	25.42	25.23	25.06
GPRS (GMSK, 4 Tx slots) – CS1	28.55	28.37	28.22	25.55	25.37	25.22

Remark: The frame-averaged power is linearly scaled the maximum burst averaged power over 8 time slots.
The calculated method are shown as below:
Frame-averaged power = Maximum burst averaged power (1 Tx Slot) - 9 dB
Frame-averaged power = Maximum burst averaged power (2 Tx Slots) - 6 dB
Frame-averaged power = Maximum burst averaged power (3 Tx Slots) - 4.26 dB
Frame-averaged power = Maximum burst averaged power (4 Tx Slots) - 3 dB

Note:

1. Choose SIM Card 2 to perform SAR test due to the highest conducted Power
2. For Head SAR testing, GSM should be evaluated, therefore the EUT was set in GSM Voice for GSM850 due to its highest frame-average power.
3. For Body worn SAR testing, GSM should be evaluated, therefore the EUT was set in GSM Voice for GSM1900 due to its highest frame-average power.
4. According to KDB447498D01V05, when DTM is not applicable, GPRS and EDGE do not require body-worn accessory SAR testing.



<SIM Card 1>

Band: GSM1900	Burst Average Power (dBm)			Frame-Average Power (dBm)		
	Channel	512	661	810	512	661
Frequency (MHz)	1850.2	1880.0	1909.8	1850.2	1880.0	1909.8
GSM (GMSK, 1 Tx slot)	29.19	29.26	29.34	20.19	20.26	20.34
GPRS (GMSK, 1 Tx slot) – CS1	29.15	29.24	29.32	20.15	20.24	20.32
GPRS (GMSK, 2 Tx slots) – CS1	28.59	28.68	28.77	22.59	22.68	22.77
GPRS (GMSK, 3 Tx slots) – CS1	27.04	27.15	27.27	22.78	22.89	23.01
GPRS (GMSK, 4 Tx slots) – CS1	26.03	26.14	26.28	23.03	23.14	23.28

Remark: The frame-averaged power is linearly scaled the maximum burst averaged power over 8 time slots.
The calculated method are shown as below:
Frame-averaged power = Maximum burst averaged power (1 Tx Slot) - 9 dB
Frame-averaged power = Maximum burst averaged power (2 Tx Slots) - 6 dB
Frame-averaged power = Maximum burst averaged power (3 Tx Slots) - 4.26 dB
Frame-averaged power = Maximum burst averaged power (4 Tx Slots) - 3 dB

<SIM Card 2>

Band: GSM1900	Burst Average Power (dBm)			Frame-Average Power (dBm)		
	Channel	512	661	810	512	661
Frequency (MHz)	1850.2	1880.0	1909.8	1850.2	1880.0	1909.8
GSM (GMSK, 1 Tx slot)	29.24	29.31	29.39	20.24	20.31	20.39
GPRS (GMSK, 1 Tx slot) – CS1	29.19	29.26	29.34	20.19	20.26	20.34
GPRS (GMSK, 2 Tx slots) – CS1	28.61	28.69	28.78	22.61	22.69	22.78
GPRS (GMSK, 3 Tx slots) – CS1	27.07	27.17	27.29	22.81	22.91	23.03
GPRS (GMSK, 4 Tx slots) – CS1	26.06	26.17	26.29	23.06	23.17	23.29

Remark: The frame-averaged power is linearly scaled the maximum burst averaged power over 8 time slots.
The calculated method are shown as below:
Frame-averaged power = Maximum burst averaged power (1 Tx Slot) - 9 dB
Frame-averaged power = Maximum burst averaged power (2 Tx Slots) - 6 dB
Frame-averaged power = Maximum burst averaged power (3 Tx Slots) - 4.26 dB
Frame-averaged power = Maximum burst averaged power (4 Tx Slots) - 3 dB

Note:

1. Choose SIM Card 2 to perform SAR test due to the highest conducted Power
2. For Head SAR testing, GSM should be evaluated, therefore the EUT was set in GSM Voice for GSM1900 due to its highest frame-average power.
3. For Body worn SAR testing, GSM should be evaluated, therefore the EUT was set in GSM Voice for GSM1900 due to its highest frame-average power.
4. According to KDB447498D01V05, when DTM is not applicable, GPRS and EDGE do not require body-worn accessory SAR testing.

<Bluetooth Conducted Power>

Channel	Frequency (MHz)	Average Power (dBm)								
		Packet Type								
		DH1	DH3	DH5	2DH1	2DH3	2DH5	3DH1	3DH3	3DH5
CH 00	2402	6.15	6.50	6.41	4.03	3.88	3.74	3.98	3.78	3.69
CH 39	2441	7.09	7.20	7.21	5.09	4.86	5.00	5.19	4.92	4.96
CH 78	2480	7.28	7.16	7.24	5.22	5.10	5.04	5.28	5.22	5.00



12. SAR Test Results

<General Note>

- Per KDB 447498 D01v05, the reported SAR is the measured SAR value adjusted for maximum tune-up tolerance.
 $Scaling\ Factor = \frac{tune-up\ limit\ power\ (mW)}{EUT\ RF\ power\ (mW)}$, where tune-up limit is the maximum rated power among all production units.
 $Reported\ SAR\ (W/kg) = Measured\ SAR(W/kg) * Scaling\ Factor$
- Per KDB 447498 D01v05, for each exposure position, if the highest output channel reported SAR $\leq 0.8W/kg$, other channels SAR testing are not necessary

12.1 Test Records for Head SAR Test

<GSM SAR>

Plot No.	Band	Mode	Test Position	Ch.	Freq. (MHz)	Burst Average Power (dBm)	Tune-Up Limit (dBm)	Scaling Factor	Power Drift (dB)	Measured SAR _{1g} (W/kg)	Reported SAR _{1g} (W/kg)
1	GSM850	GSM Voice	Right Cheek	128	824.2	31.8	32.5	1.175	-0.05	0.352	0.414
2	GSM850	GSM Voice	Right Tilted	128	824.2	31.8	32.5	1.175	-0.01	0.246	0.289
3	GSM850	GSM Voice	Left Cheek	128	824.2	31.8	32.5	1.175	0.04	0.335	0.394
4	GSM850	GSM Voice	Left Tilted	128	824.2	31.8	32.5	1.175	0.059	0.272	0.320
5	GSM1900	GSM Voice	Right Cheek	810	1909.8	29.39	30	1.151	0.04	0.474	0.545
6	GSM1900	GSM Voice	Right Tilted	810	1909.8	29.39	30	1.151	-0.05	0.632	0.727
7	GSM1900	GSM Voice	Left Cheek	810	1909.8	29.39	30	1.151	0.01	0.750	0.863
8	GSM1900	GSM Voice	Left Tilted	810	1909.8	29.39	30	1.151	-0.06	0.897	1.032
9	GSM1900	GSM Voice	Left Cheek	512	1850.2	29.24	30	1.191	-0.06	0.763	0.909
10	GSM1900	GSM Voice	Left Cheek	661	1880	29.31	30	1.172	0.03	0.824	0.966
11	GSM1900	GSM Voice	Left Tilted	512	1850.2	29.24	30	1.191	-0.02	0.774	0.922
12	GSM1900	GSM Voice	Left Tilted	661	1880	29.31	30	1.172	-0.072	0.947	1.110

12.2 Test Records for Body-worn SAR Test

Note:

1. Body-worn exposure conditions are intended to voice call operations, therefore GSM voice call mode is selected to be tested.
2. Per KDB 648474 D04v01, when the *reported* SAR for a body-worn accessory measured without a headset connected to the handset is ≤ 1.2 W/kg, SAR testing with a headset connected to the handset is not required.

<GSM SAR>

Plot No.	Band	Mode	Test Position	Gap (cm)	Ch.	Freq. (MHz)	Burst Average Power (dBm)	Tune-Up Limit (dBm)	Scaling Factor	Power Drift (dB)	Measured SAR _{1g} (W/kg)	Reported SAR _{1g} (W/kg)
14	GSM850	GSM Voice	Front	1.5	128	824.2	31.8	32.5	1.175	-0.03	0.120	0.141
15	GSM850	GSM Voice	Back	1.5	128	824.2	31.8	32.5	1.175	0.035	0.386	0.454
16	GSM1900	GSM Voice	Front	1.5	810	1909.8	29.39	30	1.151	0.14	0.115	0.132
17	GSM1900	GSM Voice	Back	1.5	810	1909.8	29.39	30	1.151	-0.09	0.296	0.341

12.3 Repeated SAR Measurement

Plot No.	Band	Mode	Test Position	Ch.	Freq. (MHz)	Burst Average Power (dBm)	Tune-Up Limit (dBm)	Scaling Factor	Power Drift (dB)	Measured SAR _{1g} (W/kg)	Ratio	Reported SAR _{1g} (W/kg)
12	GSM1900	GSM Voice	Left Tilted	661	1880	29.31	30	1.172	-0.072	0.947	1	1.110
13	GSM1900	GSM Voice	Left Tilted	661	1880	29.31	30	1.172	0.04	0.933	1.015	1.094

Note:

1. Per KDB 865664 D01v01, for each frequency band, repeated SAR measurement is required only when the measured SAR is ≥ 0.8 W/kg
2. Per KDB 865664 D01v01, if the deviation among the repeated measurement is $\leq 20\%$ and the measured SAR < 1.45 W/kg, only one repeated measurement is required.
3. The deviation is the difference in percentage between original and repeated *measured SAR*.
4. All measurement SAR result is scaled-up to account for tune-up tolerance and is compliant.

12.4 Highest SAR Plot

Plot No.	Band	Mode	Test Position	Gap (cm)	Ch.	Freq. (MHz)	Burst Average Power (dBm)	Tune-up Limit (dBm)	Scaling Factor	Power Drift (dB)	Measured SAR _{1g} (W/kg)	Reported SAR _{1g} (W/kg)
15	GSM850	GSM Voice	Back	1.5	128	824.2	31.8	32.5	1.175	0.035	0.386	0.454
12	GSM1900	GSM Voice	Left Tilted	-	661	1880	29.31	30	1.172	-0.072	0.947	1.110

Test Laboratory: Sporton International Inc. SAR/HAC Testing Lab

Date: 2013-1-21

#15 GSM850_GSM Voice_Back_1.5cm_Ch128

DUT: 311501

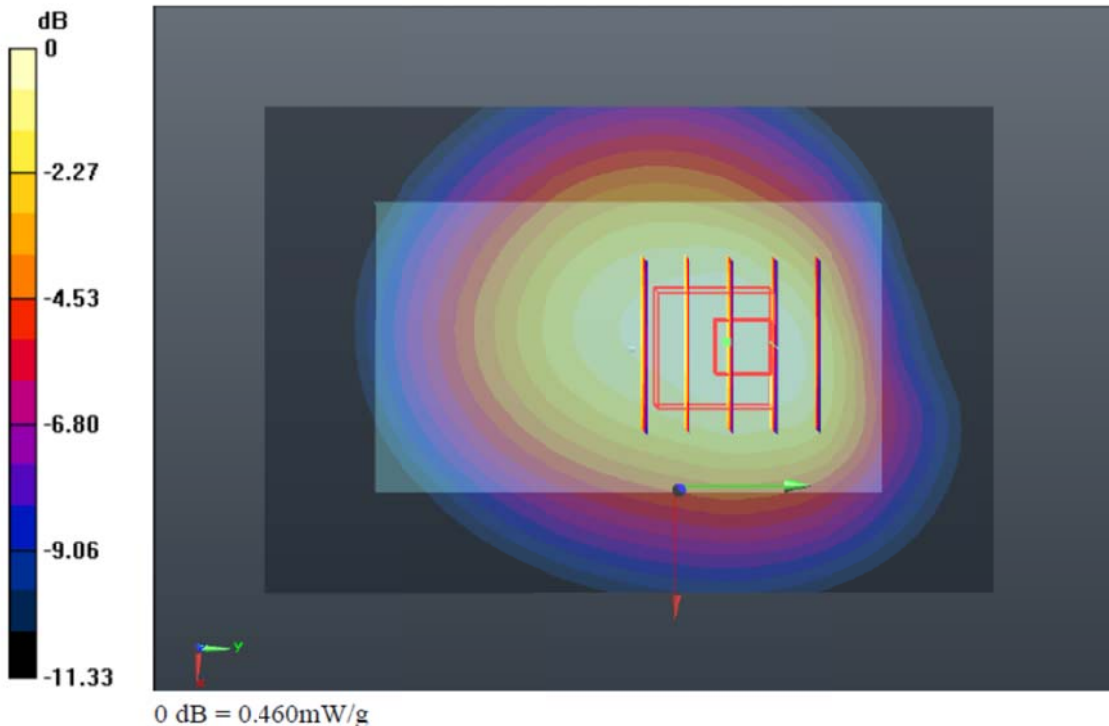
Communication System: General GSM; Frequency: 824.2 MHz; Duty Cycle: 1:8.3
Medium: MSL_835_130121 Medium parameters used: $f = 824.2$ MHz; $\sigma = 0.972$ mho/m; $\epsilon_r = 54.947$; $\rho = 1000$ kg/m³
Ambient Temperature : 23.2 °C; Liquid Temperature : 21.3 °C

DASY5 Configuration:

- Probe: EX3DV4 - SN3857; ConvF(8.98, 8.98, 8.98); Calibrated: 2012-6-20
- Sensor-Surface: 2mm (Mechanical Surface Detection)
- Electronics: DAE4 Sn1210; Calibrated: 2012-12-5
- Phantom: SAM2; Type: SAM; Serial: TP-1477
- Measurement SW: DASY52, Version 52.8 (2); SEMCAD X Version 14.4.5 (3634)

Ch128/Area Scan (61x91x1): Measurement grid: dx=15mm, dy=15mm
Maximum value of SAR (interpolated) = 0.485 mW/g

Ch128/Zoom Scan (5x5x7)/Cube 0: Measurement grid: dx=8mm, dy=8mm, dz=5mm
Reference Value = 19.138 V/m; Power Drift = 0.035 dB
Peak SAR (extrapolated) = 0.533 W/kg
SAR(1 g) = 0.386 mW/g; SAR(10 g) = 0.272 mW/g
Maximum value of SAR (measured) = 0.461 mW/g



Test Laboratory: Sporton International Inc. SAR/HAC Testing Lab

Date: 2013-1-21

#12 GSM1900_GSM Voice_Left Tilted_Ch661

DUT: 311501

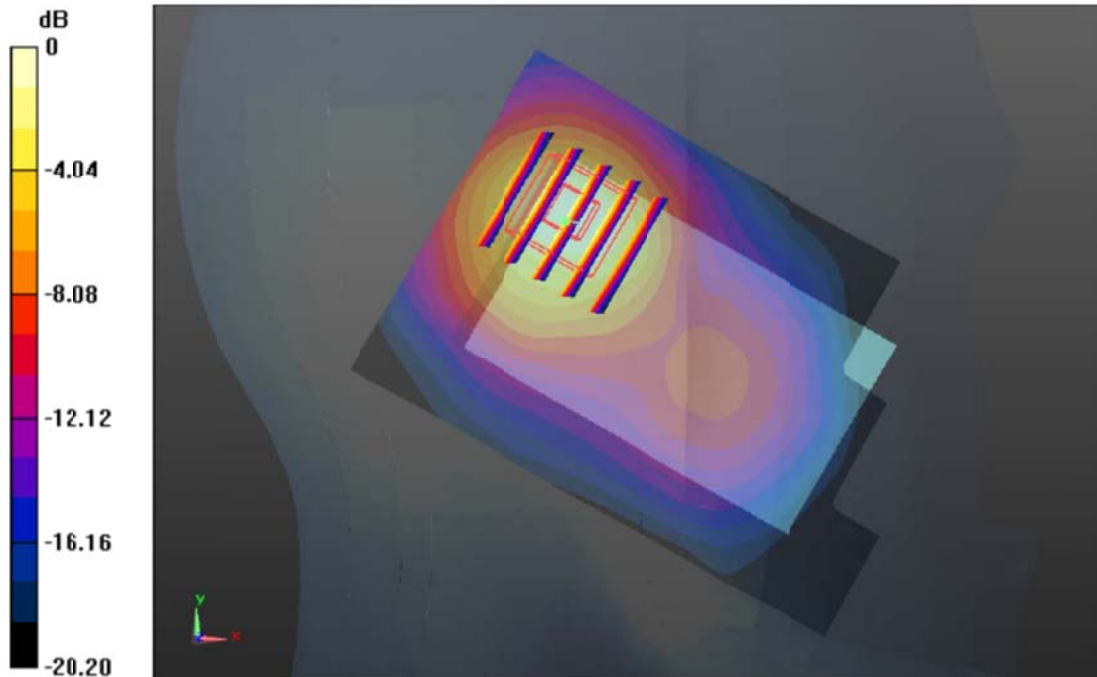
Communication System: General GSM; Frequency: 1880 MHz; Duty Cycle: 1:8.3
 Medium: HSL_1900_130121 Medium parameters used: $f = 1880 \text{ MHz}$; $\sigma = 1.404 \text{ mho/m}$; $\epsilon_r = 39.005$; $\rho = 1000 \text{ kg/m}^3$
 Ambient Temperature : 23.2 °C; Liquid Temperature : 21.2 °C

DASY5 Configuration:

- Probe: EX3DV4 - SN3857; ConvF(7.84, 7.84, 7.84); Calibrated: 2012-6-20
- Sensor-Surface: 2mm (Mechanical Surface Detection)
- Electronics: DAE4 Sn1210; Calibrated: 2012-12-5
- Phantom: SAM2; Type: SAM; Serial: TP-1477
- Measurement SW: DASY52, Version 52.8 (2); SEMCAD X Version 14.4.5 (3634)

Ch661/Area Scan (61x91x1): Measurement grid: dx=15mm, dy=15mm
 Maximum value of SAR (interpolated) = 1.083 mW/g

Ch661/Zoom Scan (5x5x7)/Cube 0: Measurement grid: dx=8mm, dy=8mm, dz=5mm
 Reference Value = 21.995 V/m; Power Drift = -0.072 dB
 Peak SAR (extrapolated) = 1.988 W/kg
SAR(1 g) = 0.947 mW/g; SAR(10 g) = 0.451 mW/g
 Maximum value of SAR (measured) = 1.044 mW/g



0 dB = 1.040mW/g

12.5 Simultaneous Multi-band Transmission Analysis

No.	Applicable Simultaneous Transmission Combination
1.	GSM (Voice) + BT

Note:

1. This device does not support hotspot mode.
2. Base on KDB 447498 D01 v05, BT SAR is excluded as below table.
3. The Scaled SAR summation is calculated based on the same configuration and test position.
4. Per KDB 447498 D01v05, for handsets the *test separation distance* is determined by the smallest distance between the outer surface of the device and the user; which is 0mm for head SAR, 15mm for body-worn SAR.
5. If the test separation distance (antenna-user) is < 5mm, 5mm is used for excluded SAR calculation
6. For minimum test separation distance ≤50mm, Bluetooth standalone SAR is excluded according to $[(max. power of channel, including tune-up tolerance, mW)/(min. test separation distance, mm)] \cdot [\sqrt{f(GHz)}] \leq 3.0$ for 1-g SAR and ≤ 7.5 for 10-g extremity SAR

Wireless Interface		Bluetooth
Tune-up Maximum power (dBm)		8
Tune-up Maximum rated power (mW)		6.31
Head	Antenna to user (mm)	5
	SAR exclusion threshold (mW)	10
	SAR testing required?	NO
Body	Antenna to user (mm)	15
	SAR exclusion threshold (mW)	29
	SAR testing required?	NO

7. For simultaneous transmission analysis, Bluetooth SAR is estimated per KDB 447498 D01v05 based on the formula below.
 - i) $(max. power of channel, including tune-up tolerance, mW)/(min. test separation distance, mm) \cdot [\sqrt{f(GHz)/x}]$ W/kg for *test separation distances* ≤ 50 mm; where x = 7.5 for 1-g SAR, and x = 18.75 for 10-g SAR.
 - ii) 0.4 W/kg for 1-g SAR and 1.0 W/kg for 10-g SAR, when the *test separation distances* is > 50 mm.

	Max power (dBm)	Head (0cm gap)	Body (1.5cm gap)
Estimated SAR (W/kg)	8dBm	0.265W/kg	0.088 W/kg

8. Per KDB 447498 D01v05, simultaneous transmission SAR is compliant if,
 - (i) Scalar SAR summation < 1.6W/kg.
 - (ii) $SPLSR = (SAR_1 + SAR_2)^{1.5} / (min. separation distance, mm)$, and the peak separation distance is determined from the square root of $[(x_1-x_2)^2 + (y_1-y_2)^2 + (z_1-z_2)^2]$, where (x_1, y_1, z_1) and (x_2, y_2, z_2) are the coordinates of the extrapolated peak SAR locations in the zoom scan
If $SPLSR \leq 0.04$, simultaneously transmission SAR measurement is not necessary
 - (iii) Simultaneously transmission SAR measurement, and the reported multi-band SAR < 1.6W/kg



<Head SAR>

Position	WWAN-PCE			Bluetooth-DSS	WWAN + Bluetooth (W/kg)	SPLSR ≤ 0.04	Case No.
	WWAN Band	Plot No	Max. WWAN SAR (W/kg)	Estimated SAR (W/kg)			
Right Cheek	GSM850	#01	0.414	0.265	0.68	-	-
	GSM1900	#05	0.545	0.265	0.81	-	-
Right Tilted	GSM850	#02	0.289	0.265	0.55	-	-
	GSM1900	#06	0.727	0.265	0.99	-	-
Left Cheek	GSM850	#03	0.394	0.265	0.66	-	-
	GSM1900	#10	0.966	0.265	1.23	-	-
Left Tilted	GSM850	#04	0.320	0.265	0.59	-	-
	GSM1900	#12	1.110	0.265	1.38	-	-

<Body-worn SAR>

Position	WWAN-PCE			Bluetooth-DSS	WWAN + Bluetooth (W/kg)	SPLSR ≤ 0.04	Case No.
	WWAN Band	Plot No	Max. WWAN SAR (W/kg)	Estimated SAR (W/kg)			
Front	GSM850	#14	0.141	0.088	0.23	-	-
	GSM1900	#16	0.132	0.088	0.22	-	-
Back	GSM850	#15	0.454	0.088	0.54	-	-
	GSM1900	#17	0.341	0.088	0.43	-	-

Test Engineer : Fulu Hu

13. Uncertainty Assessment

The component of uncertainty may generally be categorized according to the methods used to evaluate them. The evaluation of uncertainty by the statistical analysis of a series of observations is termed a Type A evaluation of uncertainty. The evaluation of uncertainty by means other than the statistical analysis of a series of observations is termed a Type B evaluation of uncertainty. Each component of uncertainty, however evaluated, is represented by an estimated standard deviation, termed standard uncertainty, which is determined by the positive square root of the estimated variance.

A Type A evaluation of standard uncertainty may be based on any valid statistical method for treating data. This includes calculating the standard deviation of the mean of a series of independent observations; using the method of least squares to fit a curve to the data in order to estimate the parameter of the curve and their standard deviations; or carrying out an analysis of variance in order to identify and quantify random effects in certain kinds of measurement.

A type B evaluation of standard uncertainty is typically based on scientific judgment using all of the relevant information available. These may include previous measurement data, experience, and knowledge of the behavior and properties of relevant materials and instruments, manufacture’s specification, data provided in calibration reports and uncertainties assigned to reference data taken from handbooks. Broadly speaking, the uncertainty is either obtained from an outdoor source or obtained from an assumed distribution, such as the normal distribution, rectangular or triangular distributions indicated in Table 12.1

Uncertainty Distributions	Normal	Rectangular	Triangular	U-Shape
Multi-plying Factor ^(a)	1/k ^(b)	1/√3	1/√6	1/√2

(a) standard uncertainty is determined as the product of the multiplying factor and the estimated range of variations in the measured quantity

(b) κ is the coverage factor

Table 12.1 Standard Uncertainty for Assumed Distribution

The combined standard uncertainty of the measurement result represents the estimated standard deviation of the result. It is obtained by combining the individual standard uncertainties of both Type A and Type B evaluation using the usual “root-sum-squares” (RSS) methods of combining standard deviations by taking the positive square root of the estimated variances.

Expanded uncertainty is a measure of uncertainty that defines an interval about the measurement result within which the measured value is confidently believed to lie. It is obtained by multiplying the combined standard uncertainty by a coverage factor. Typically, the coverage factor ranges from 2 to 3. Using a coverage factor allows the true value of a measured quantity to be specified with a defined probability within the specified uncertainty range. For purpose of this document, a coverage factor two is used, which corresponds to confidence interval of about 95 %. The DASY uncertainty Budget is shown in the following tables.



Error Description	Uncertainty	Probability	Divisor	Ci	Ci	Standard	Standard
	Value (±%)	Distribution		(1g)	(10g)	Uncertainty (1g)	Uncertainty (10g)
Measurement System							
Probe Calibration	6.0	Normal	1	1	1	± 6.0 %	± 6.0 %
Axial Isotropy	4.7	Rectangular	√3	0.7	0.7	± 1.9 %	± 1.9 %
Hemispherical Isotropy	9.6	Rectangular	√3	0.7	0.7	± 3.9 %	± 3.9 %
Boundary Effects	1.0	Rectangular	√3	1	1	± 0.6 %	± 0.6 %
Linearity	4.7	Rectangular	√3	1	1	± 2.7 %	± 2.7 %
System Detection Limits	1.0	Rectangular	√3	1	1	± 0.6 %	± 0.6 %
Readout Electronics	0.3	Normal	1	1	1	± 0.3 %	± 0.3 %
Response Time	0.8	Rectangular	√3	1	1	± 0.5 %	± 0.5 %
Integration Time	2.6	Rectangular	√3	1	1	± 1.5 %	± 1.5 %
RF Ambient Noise	3.0	Rectangular	√3	1	1	± 1.7 %	± 1.7 %
RF Ambient Reflections	3.0	Rectangular	√3	1	1	± 1.7 %	± 1.7 %
Probe Positioner	0.4	Rectangular	√3	1	1	± 0.2 %	± 0.2 %
Probe Positioning	2.9	Rectangular	√3	1	1	± 1.7 %	± 1.7 %
Max. SAR Eval.	1.0	Rectangular	√3	1	1	± 0.6 %	± 0.6 %
Test Sample Related							
Device Positioning	2.9	Normal	1	1	1	± 2.9 %	± 2.9 %
Device Holder	3.6	Normal	1	1	1	± 3.6 %	± 3.6 %
Power Drift	5.0	Rectangular	√3	1	1	± 2.9 %	± 2.9 %
Phantom and Setup							
Phantom Uncertainty	4.0	Rectangular	√3	1	1	± 2.3 %	± 2.3 %
Liquid Conductivity (Target)	5.0	Rectangular	√3	0.64	0.43	± 1.8 %	± 1.2 %
Liquid Conductivity (Meas.)	2.5	Normal	1	0.64	0.43	± 1.6 %	± 1.1 %
Liquid Permittivity (Target)	5.0	Rectangular	√3	0.6	0.49	± 1.7 %	± 1.4 %
Liquid Permittivity (Meas.)	2.5	Normal	1	0.6	0.49	± 1.5 %	± 1.2 %
Combined Standard Uncertainty						± 11.0 %	± 10.8 %
Coverage Factor for 95 %						K=2	
Expanded Uncertainty						± 22.0 %	± 21.5 %

Table 12.2 Uncertainty Budget of DASY for frequency range 300 MHz to 3 GHz according to IEEE 1528-2003



14. References

- [1] FCC 47 CFR Part 2 “Frequency Allocations and Radio Treaty Matters; General Rules and Regulations”
- [2] ANSI/IEEE Std. C95.1-1992, “IEEE Standard for Safety Levels with Respect to Human Exposure to Radio Frequency Electromagnetic Fields, 3 kHz to 300 GHz”, September 1992
- [3] IEEE Std. 1528-2003, “Recommended Practice for Determining the Peak Spatial-Average Specific Absorption Rate (SAR) in the Human Head from Wireless Communications Devices: Measurement Techniques”, December 2003
- [4] FCC OET Bulletin 65 (Edition 97-01) Supplement C (Edition 01-01), “Evaluating Compliance with FCC Guidelines for Human Exposure to Radiofrequency Electromagnetic Fields”, June 2001
- [5] SPEAG DASY System Handbook
- [6] FCC KDB 447498 D01 v05, “Mobile and Portable Device RF Exposure Procedures and Equipment Authorization Policies”, October 2012
- [7] FCC KDB 648474 D04 v01, “SAR Evaluation Considerations for Handsets with Multiple Transmitters and Antennas”, October 2012
- [8] FCC KDB 865664 D01 v01” SAR Measurement Requirements for 100 MHz to 6 GHz” , October 2012



Appendix A. Plots of System Performance Check

The plots are shown as follows.

System Check_Head_835MHz_130121

DUT: D835V2 - SN:4d091

Communication System: CW; Frequency: 835 MHz; Duty Cycle: 1:1

Medium: HSL_835_130121 Medium parameters used: $f = 835$ MHz; $\sigma = 0.884$ mho/m; $\epsilon_r = 41.016$;

$\rho = 1000$ kg/m³

Ambient Temperature : 23.4 °C ; Liquid Temperature : 21.5 °C

DASY5 Configuration:

- Probe: EX3DV4 - SN3857; ConvF(8.74, 8.74, 8.74); Calibrated: 2012-6-20
- Sensor-Surface: 2mm (Mechanical Surface Detection)
- Electronics: DAE4 Sn1210; Calibrated: 2012-12-5
- Phantom: SAM1; Type: SAM; Serial: TP-1479
- Measurement SW: DASY52, Version 52.8 (2); SEMCAD X Version 14.4.5 (3634)

Pin=250mW/Area Scan (61x61x1): Measurement grid: dx=15mm, dy=15mm

Maximum value of SAR (interpolated) = 2.452 mW/g

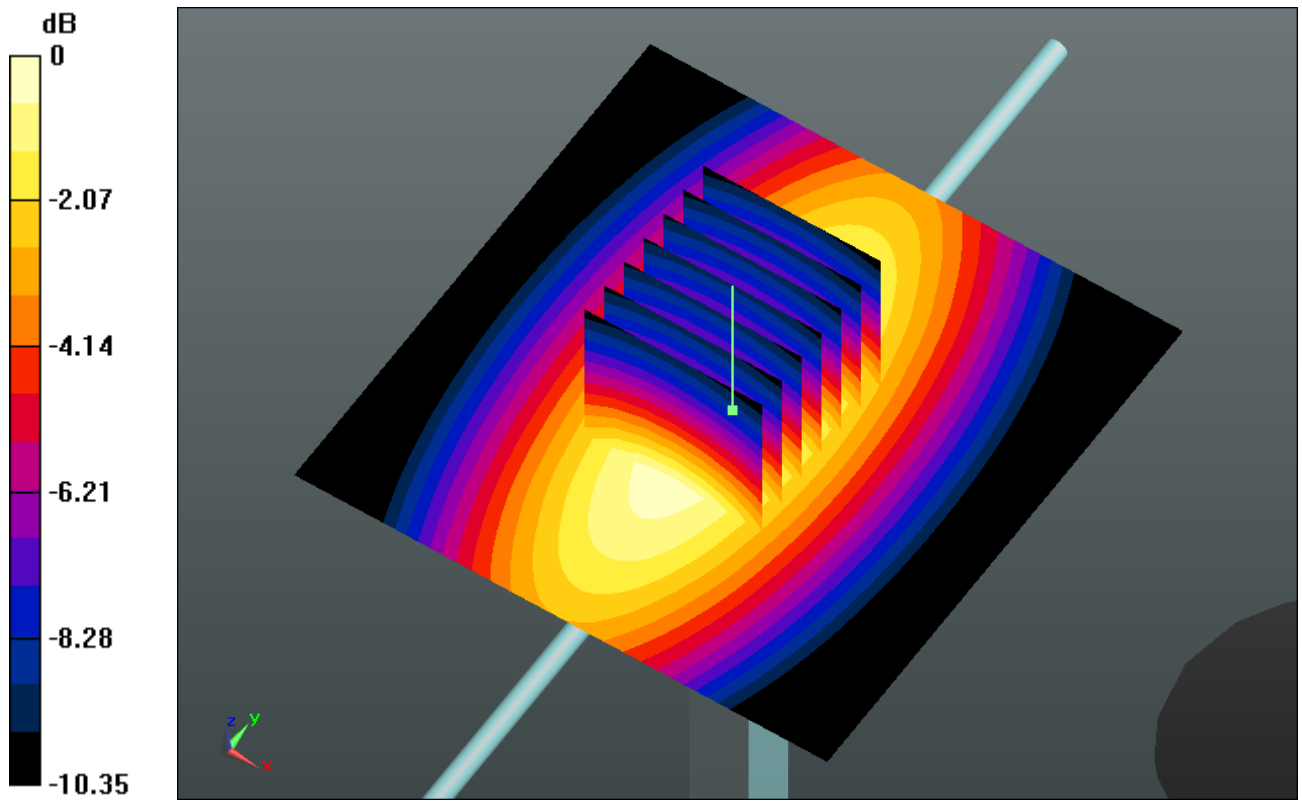
Pin=250mW/Zoom Scan (7x7x7)/Cube 0: Measurement grid: dx=5mm, dy=5mm, dz=5mm

Reference Value = 53.193 V/m; Power Drift = 0.01 dB

Peak SAR (extrapolated) = 3.302 W/kg

SAR(1 g) = 2.27 mW/g; SAR(10 g) = 1.5 mW/g

Maximum value of SAR (measured) = 2.455 mW/g



0 dB = 2.450mW/g

System Check_Head_1900MHz_130121

DUT: D1900V2 - SN:5d118

Communication System: CW; Frequency: 1900 MHz; Duty Cycle: 1:1

Medium: HSL_1900_130121 Medium parameters used: $f = 1900$ MHz; $\sigma = 1.424$ mho/m; $\epsilon_r =$

38.917 ; $\rho = 1000$ kg/m³

Ambient Temperature : 23.2 °C; Liquid Temperature : 21.2 °C

DASY5 Configuration:

- Probe: EX3DV4 - SN3857; ConvF(7.84, 7.84, 7.84); Calibrated: 2012-6-20
- Sensor-Surface: 2mm (Mechanical Surface Detection)
- Electronics: DAE4 Sn1210; Calibrated: 2012-12-5
- Phantom: SAM2; Type: SAM; Serial: TP-1477
- Measurement SW: DASY52, Version 52.8 (2); SEMCAD X Version 14.4.5 (3634)

Pin=250mW/Area Scan (91x91x1): Measurement grid: dx=10mm, dy=10mm

Maximum value of SAR (interpolated) = 11.371 mW/g

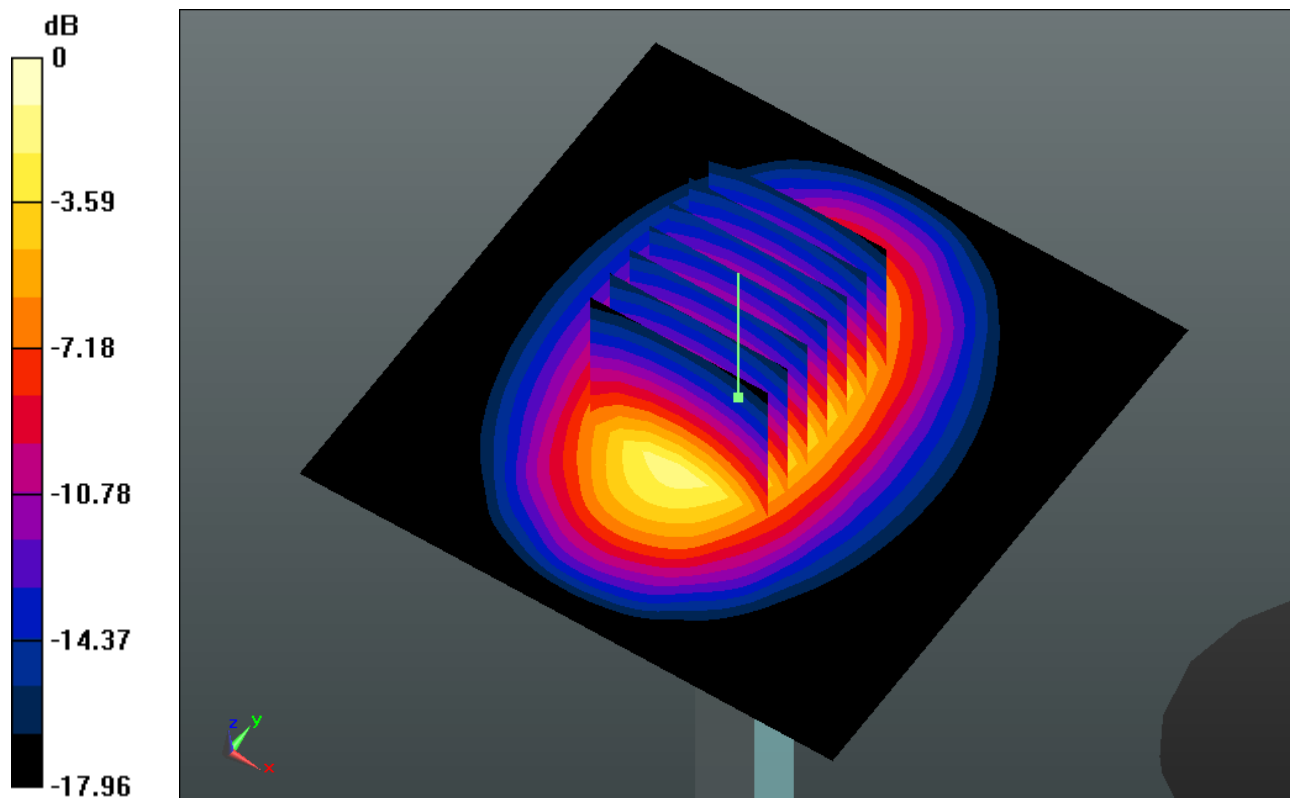
Pin=250mW/Zoom Scan (7x7x7)/Cube 0: Measurement grid: dx=5mm, dy=5mm, dz=5mm

Reference Value = 88.586 V/m; Power Drift = 0.05 dB

Peak SAR (extrapolated) = 18.914 W/kg

SAR(1 g) = 9.99 mW/g; SAR(10 g) = 5.14 mW/g

Maximum value of SAR (measured) = 11.246 mW/g



0 dB = 11.250mW/g

System Check_Body_835MHz_130121

DUT: D835V2 - SN:4d091

Communication System: CW; Frequency: 835 MHz; Duty Cycle: 1:1

Medium: MSL_835_130121 Medium parameters used: $f = 835$ MHz; $\sigma = 0.983$ mho/m; $\epsilon_r = 54.847$;

$\rho = 1000$ kg/m³

Ambient Temperature : 23.2 °C; Liquid Temperature : 21.3 °C

DASY5 Configuration:

- Probe: EX3DV4 - SN3857; ConvF(8.98, 8.98, 8.98); Calibrated: 2012-6-20
- Sensor-Surface: 2mm (Mechanical Surface Detection)
- Electronics: DAE4 Sn1210; Calibrated: 2012-12-5
- Phantom: SAM2; Type: SAM; Serial: TP-1477
- Measurement SW: DASY52, Version 52.8 (2); SEMCAD X Version 14.4.5 (3634)

Pin=250mW/Area Scan (61x61x1): Measurement grid: dx=15mm, dy=15mm

Maximum value of SAR (interpolated) = 2.454 mW/g

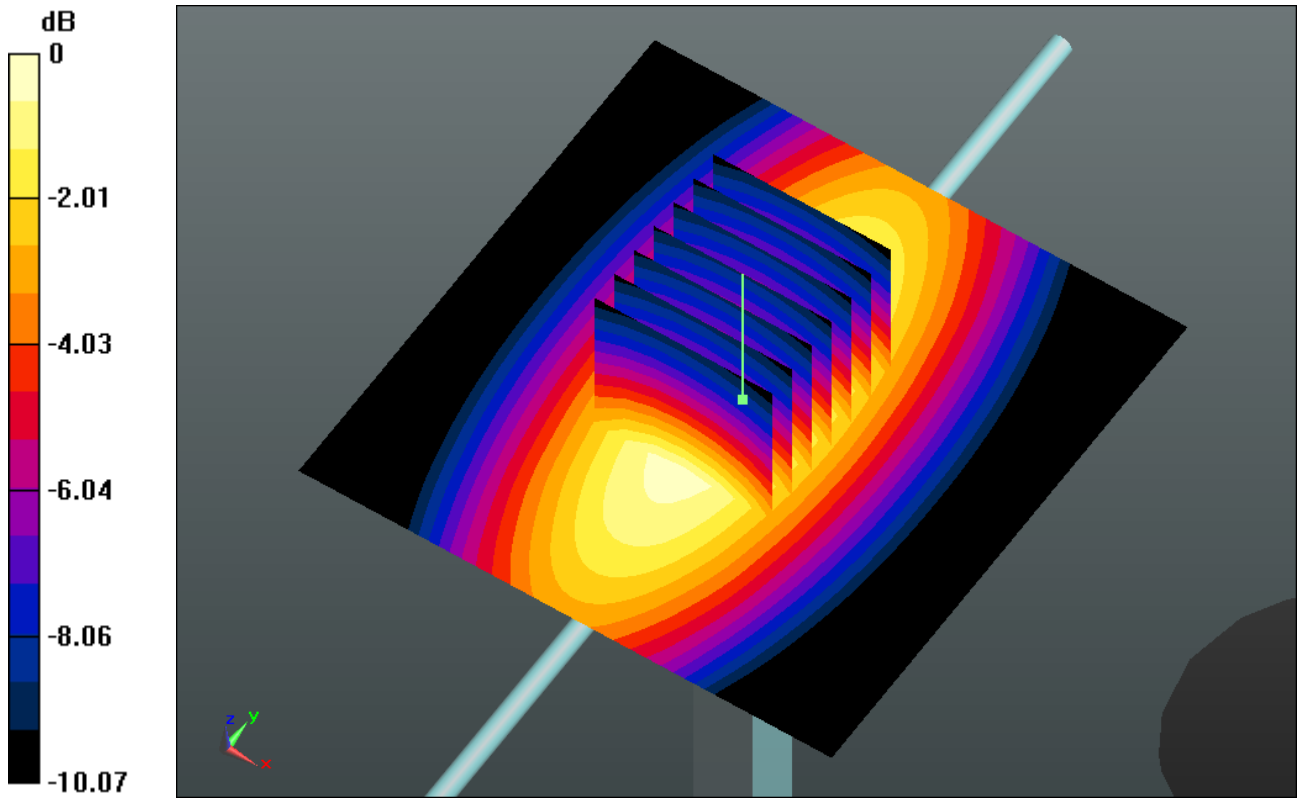
Pin=250mW/Zoom Scan (7x7x7)/Cube 0: Measurement grid: dx=5mm, dy=5mm, dz=5mm

Reference Value = 50.408 V/m; Power Drift = 0.061 dB

Peak SAR (extrapolated) = 3.284 W/kg

SAR(1 g) = 2.27 mW/g; SAR(10 g) = 1.51 mW/g

Maximum value of SAR (measured) = 2.459 mW/g



0 dB = 2.460mW/g

System Check_Body_1900MHz_130121

DUT: D1900V2 - SN:5d118

Communication System: CW; Frequency: 1900 MHz; Duty Cycle: 1:1

Medium: MSL_1900_130121 Medium parameters used: $f = 1900$ MHz; $\sigma = 1.544$ mho/m; $\epsilon_r =$

53.236 ; $\rho = 1000$ kg/m³

Ambient Temperature : 23.1 °C; Liquid Temperature : 21.1 °C

DASY5 Configuration:

- Probe: EX3DV4 - SN3857; ConvF(7.35, 7.35, 7.35); Calibrated: 2012-6-20
- Sensor-Surface: 2mm (Mechanical Surface Detection)
- Electronics: DAE4 Sn1210; Calibrated: 2012-12-5
- Phantom: SAM1; Type: SAM; Serial: TP-1479
- Measurement SW: DASY52, Version 52.8 (2); SEMCAD X Version 14.4.5 (3634)

Pin=250mW/Area Scan (91x91x1): Measurement grid: dx=10mm, dy=10mm

Maximum value of SAR (interpolated) = 11.652 mW/g

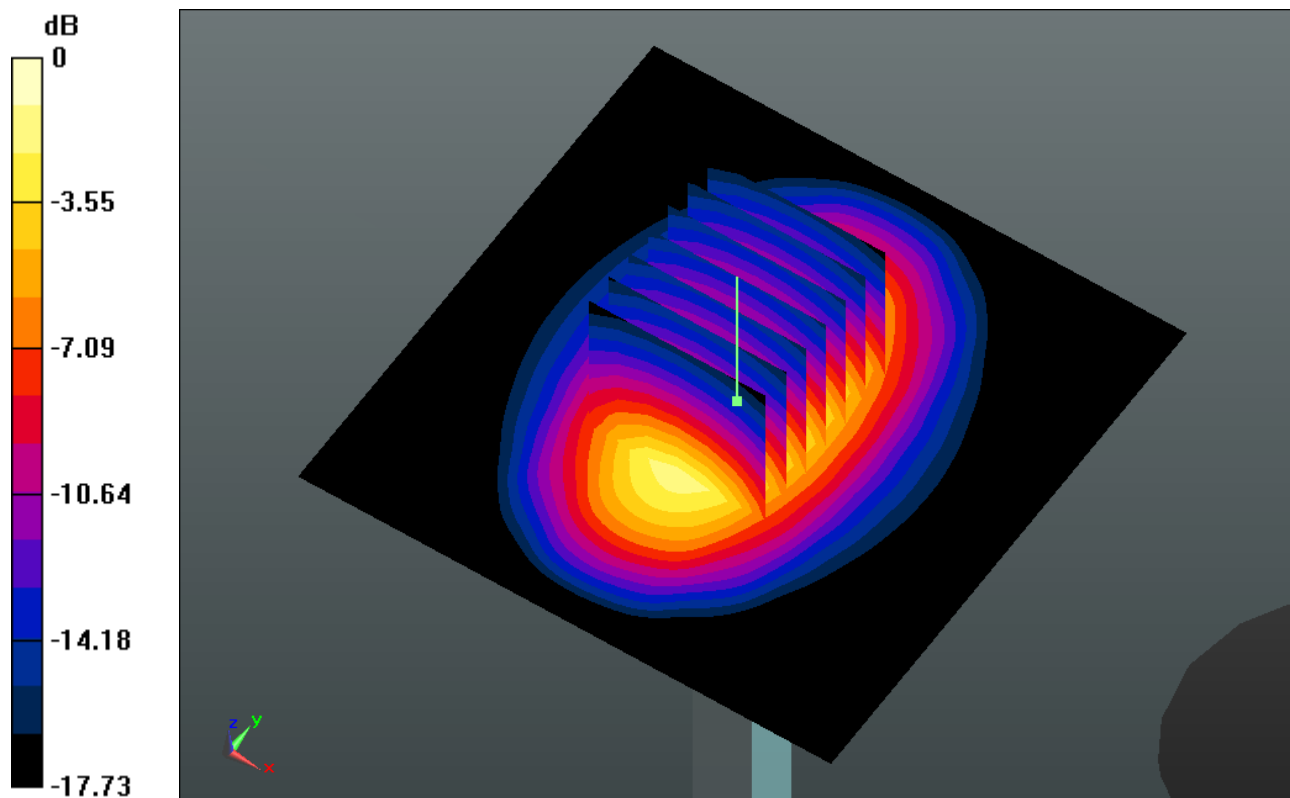
Pin=250mW/Zoom Scan (7x7x7)/Cube 0: Measurement grid: dx=5mm, dy=5mm, dz=5mm

Reference Value = 86.995 V/m; Power Drift = 0.02 dB

Peak SAR (extrapolated) = 18.288 W/kg

SAR(1 g) = 10.1 mW/g; SAR(10 g) = 5.18 mW/g

Maximum value of SAR (measured) = 11.466 mW/g



0 dB = 11.470mW/g



Appendix B. Plots of SAR Measurement

The plots are shown as follows.

#01 GSM850_GSM Voice_Right Cheek_Ch128

DUT: 311501

Communication System: General GSM; Frequency: 824.2 MHz; Duty Cycle: 1:8.3

Medium: HSL_835_130121 Medium parameters used: $f = 824.2$ MHz; $\sigma = 0.874$ mho/m; $\epsilon_r =$

41.141; $\rho = 1000$ kg/m³

Ambient Temperature : 23.4 °C ; Liquid Temperature : 21.5 °C

DASY5 Configuration:

- Probe: EX3DV4 - SN3857; ConvF(8.74, 8.74, 8.74); Calibrated: 2012-6-20
- Sensor-Surface: 2mm (Mechanical Surface Detection)
- Electronics: DAE4 Sn1210; Calibrated: 2012-12-5
- Phantom: SAM1; Type: SAM; Serial: TP-1479
- Measurement SW: DASY52, Version 52.8 (2); SEMCAD X Version 14.4.5 (3634)

Ch128/Area Scan (61x91x1): Measurement grid: dx=15mm, dy=15mm

Maximum value of SAR (interpolated) = 0.399 mW/g

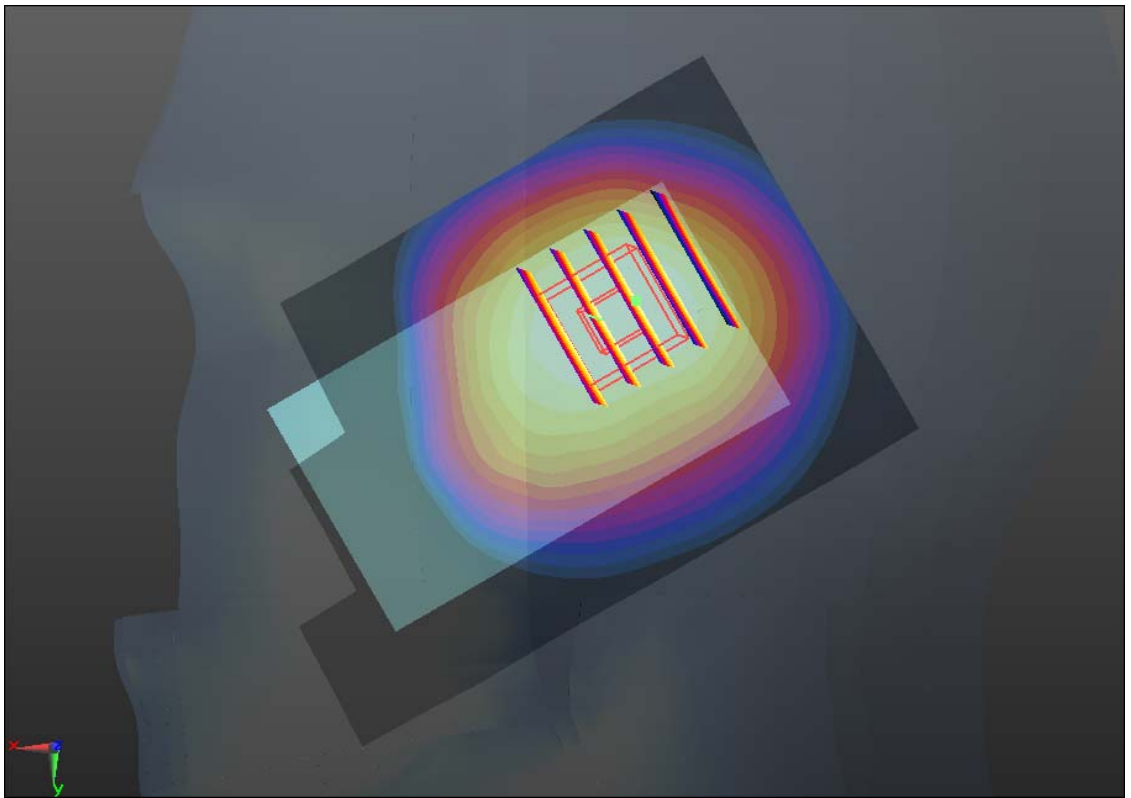
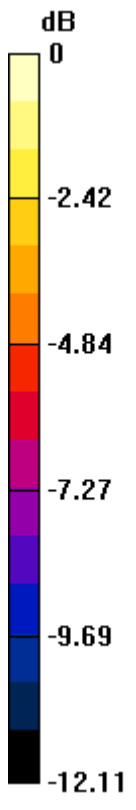
Ch128/Zoom Scan (5x5x7)/Cube 0: Measurement grid: dx=8mm, dy=8mm, dz=5mm

Reference Value = 19.607 V/m; Power Drift = -0.05 dB

Peak SAR (extrapolated) = 0.443 W/kg

SAR(1 g) = 0.352 mW/g; SAR(10 g) = 0.250 mW/g

Maximum value of SAR (measured) = 0.372 mW/g



0 dB = 0.370mW/g

#01 GSM850_GSM Voice_Right Cheek_Ch128_2D

DUT: 311501

Communication System: General GSM; Frequency: 824.2 MHz; Duty Cycle: 1:8.3

Medium: HSL_835_130121 Medium parameters used: $f = 824.2$ MHz; $\sigma = 0.874$ mho/m; $\epsilon_r =$

41.141; $\rho = 1000$ kg/m³

Ambient Temperature : 23.4 °C ; Liquid Temperature : 21.5 °C

DASY5 Configuration:

- Probe: EX3DV4 - SN3857; ConvF(8.74, 8.74, 8.74); Calibrated: 2012-6-20
- Sensor-Surface: 2mm (Mechanical Surface Detection)
- Electronics: DAE4 Sn1210; Calibrated: 2012-12-5
- Phantom: SAM1; Type: SAM; Serial: TP-1479
- Measurement SW: DASY52, Version 52.8 (2); SEMCAD X Version 14.4.5 (3634)

Ch128/Area Scan (61x91x1): Measurement grid: dx=15mm, dy=15mm

Maximum value of SAR (interpolated) = 0.399 mW/g

Ch128/Zoom Scan (5x5x7)/Cube 0: Measurement grid: dx=8mm, dy=8mm, dz=5mm

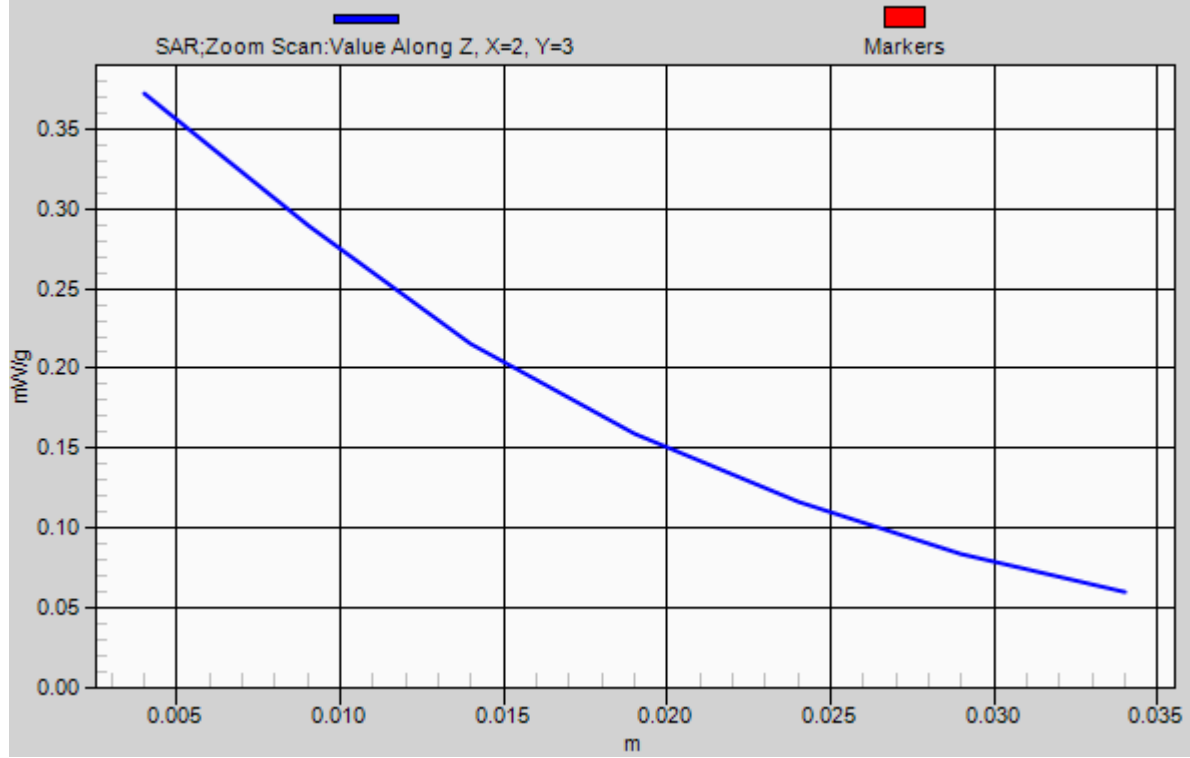
Reference Value = 19.607 V/m; Power Drift = -0.05 dB

Peak SAR (extrapolated) = 0.443 W/kg

SAR(1 g) = 0.352 mW/g; SAR(10 g) = 0.250 mW/g

Maximum value of SAR (measured) = 0.372 mW/g

1g/10g Averaged SAR



#02 GSM850_GSM Voice_Right Tilted_Ch128

DUT: 311501

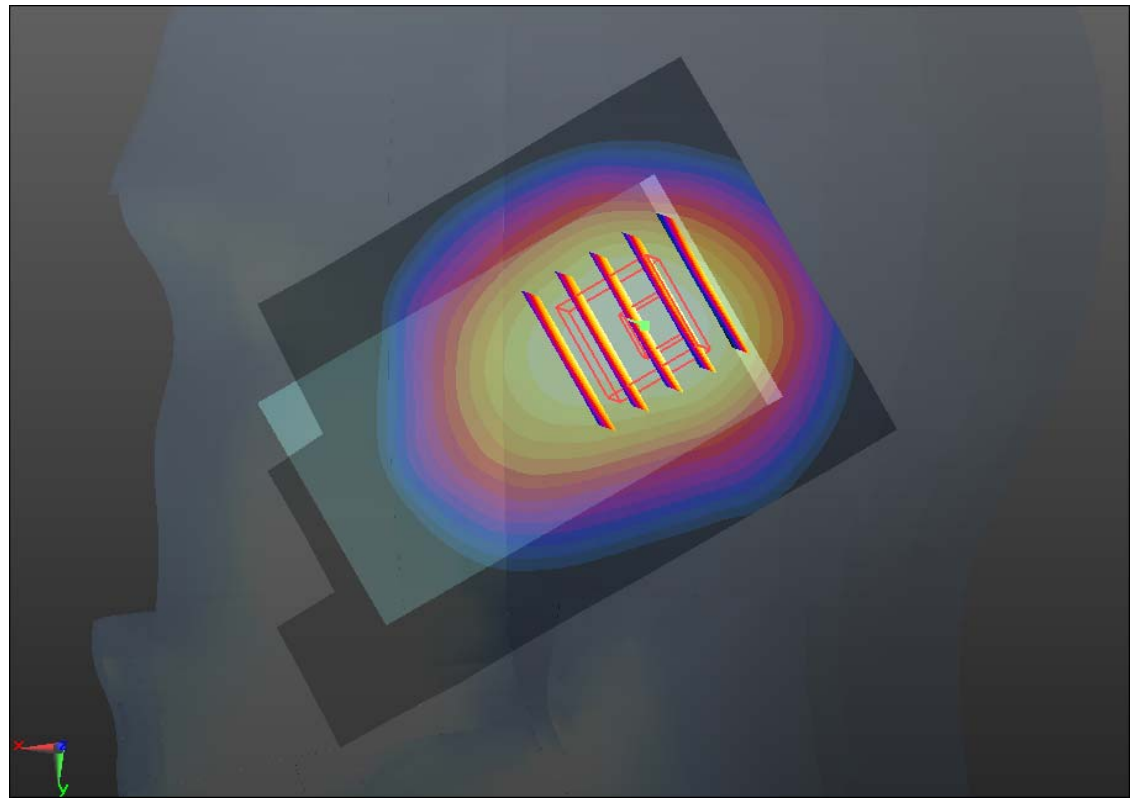
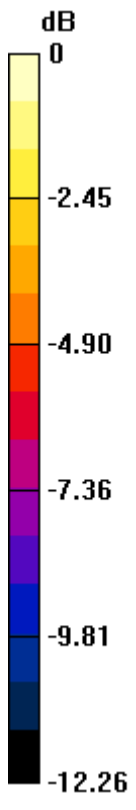
Communication System: General GSM; Frequency: 824.2 MHz; Duty Cycle: 1:8.3
Medium: HSL_835_130121 Medium parameters used: $f = 824.2$ MHz; $\sigma = 0.874$ mho/m; $\epsilon_r = 41.141$; $\rho = 1000$ kg/m³
Ambient Temperature : 23.4 °C ; Liquid Temperature : 21.5 °C

DASY5 Configuration:

- Probe: EX3DV4 - SN3857; ConvF(8.74, 8.74, 8.74); Calibrated: 2012-6-20
- Sensor-Surface: 2mm (Mechanical Surface Detection)
- Electronics: DAE4 Sn1210; Calibrated: 2012-12-5
- Phantom: SAM1; Type: SAM; Serial: TP-1479
- Measurement SW: DASY52, Version 52.8 (2); SEMCAD X Version 14.4.5 (3634)

Ch128/Area Scan (61x91x1): Measurement grid: dx=15mm, dy=15mm
Maximum value of SAR (interpolated) = 0.278 mW/g

Ch128/Zoom Scan (5x5x7)/Cube 0: Measurement grid: dx=8mm, dy=8mm, dz=5mm
Reference Value = 17.290 V/m; Power Drift = -0.01 dB
Peak SAR (extrapolated) = 0.340 W/kg
SAR(1 g) = 0.246 mW/g; SAR(10 g) = 0.169 mW/g
Maximum value of SAR (measured) = 0.261 mW/g



0 dB = 0.260mW/g

#03 GSM850_GSM Voice_Left Cheek_Ch128

DUT: 311501

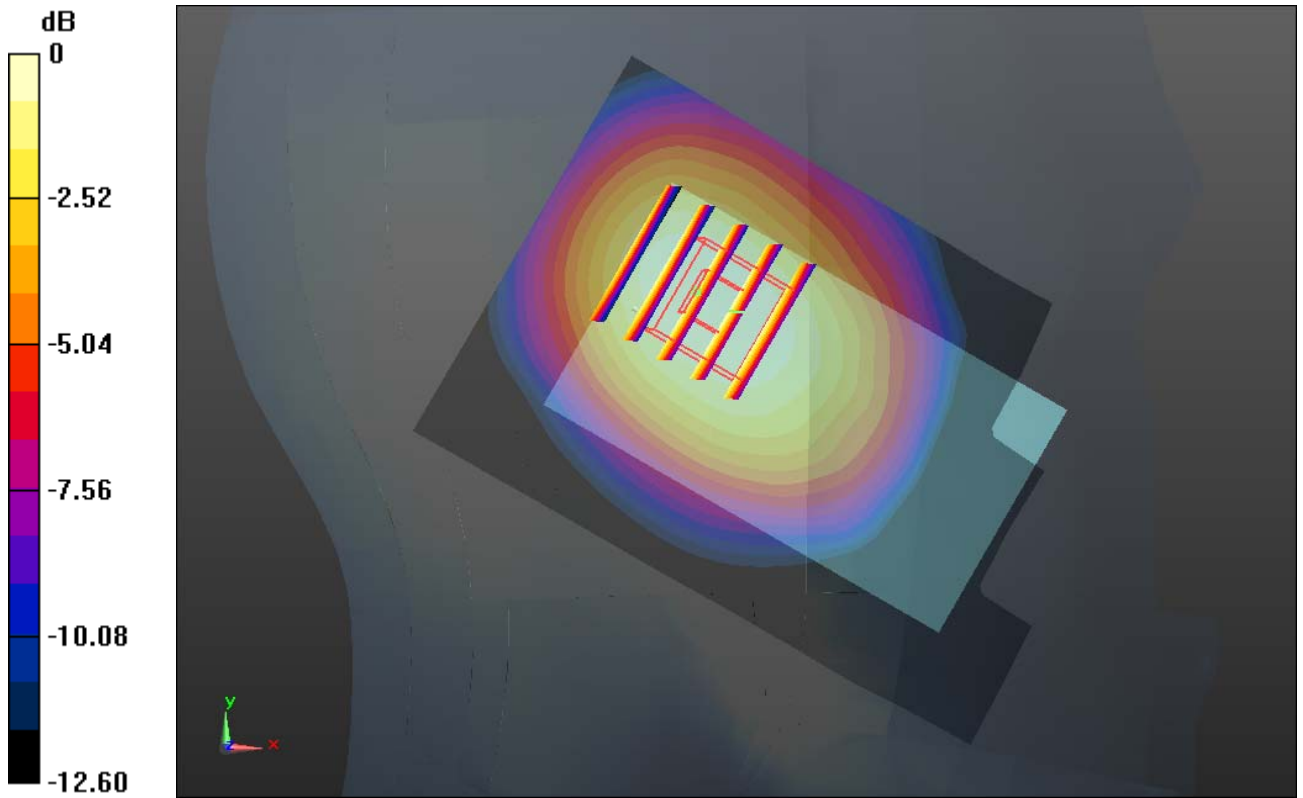
Communication System: General GSM; Frequency: 824.2 MHz; Duty Cycle: 1:8.3
Medium: HSL_835_130121 Medium parameters used: $f = 824.2$ MHz; $\sigma = 0.874$ mho/m; $\epsilon_r = 41.141$; $\rho = 1000$ kg/m³
Ambient Temperature : 23.4 °C ; Liquid Temperature : 21.5 °C

DASY5 Configuration:

- Probe: EX3DV4 - SN3857; ConvF(8.74, 8.74, 8.74); Calibrated: 2012-6-20
- Sensor-Surface: 2mm (Mechanical Surface Detection)
- Electronics: DAE4 Sn1210; Calibrated: 2012-12-5
- Phantom: SAM1; Type: SAM; Serial: TP-1479
- Measurement SW: DASY52, Version 52.8 (2); SEMCAD X Version 14.4.5 (3634)

Ch128/Area Scan (61x91x1): Measurement grid: dx=15mm, dy=15mm
Maximum value of SAR (interpolated) = 0.374 mW/g

Ch128/Zoom Scan (5x5x7)/Cube 0: Measurement grid: dx=8mm, dy=8mm, dz=5mm
Reference Value = 18.795 V/m; Power Drift = 0.04 dB
Peak SAR (extrapolated) = 0.488 W/kg
SAR(1 g) = 0.335 mW/g; SAR(10 g) = 0.231 mW/g
Maximum value of SAR (measured) = 0.354 mW/g



0 dB = 0.350mW/g

#04 GSM850_GSM Voice_Left Tilted_Ch128

DUT: 311501

Communication System: General GSM; Frequency: 824.2 MHz; Duty Cycle: 1:8.3

Medium: HSL_835_130121 Medium parameters used: $f = 824.2$ MHz; $\sigma = 0.874$ mho/m; $\epsilon_r =$

41.141; $\rho = 1000$ kg/m³

Ambient Temperature : 23.4 °C ; Liquid Temperature : 21.5 °C

DASY5 Configuration:

- Probe: EX3DV4 - SN3857; ConvF(8.74, 8.74, 8.74); Calibrated: 2012-6-20
- Sensor-Surface: 2mm (Mechanical Surface Detection)
- Electronics: DAE4 Sn1210; Calibrated: 2012-12-5
- Phantom: SAM1; Type: SAM; Serial: TP-1479
- Measurement SW: DASY52, Version 52.8 (2); SEMCAD X Version 14.4.5 (3634)

Ch128/Area Scan (61x91x1): Measurement grid: dx=15mm, dy=15mm

Maximum value of SAR (interpolated) = 0.303 mW/g

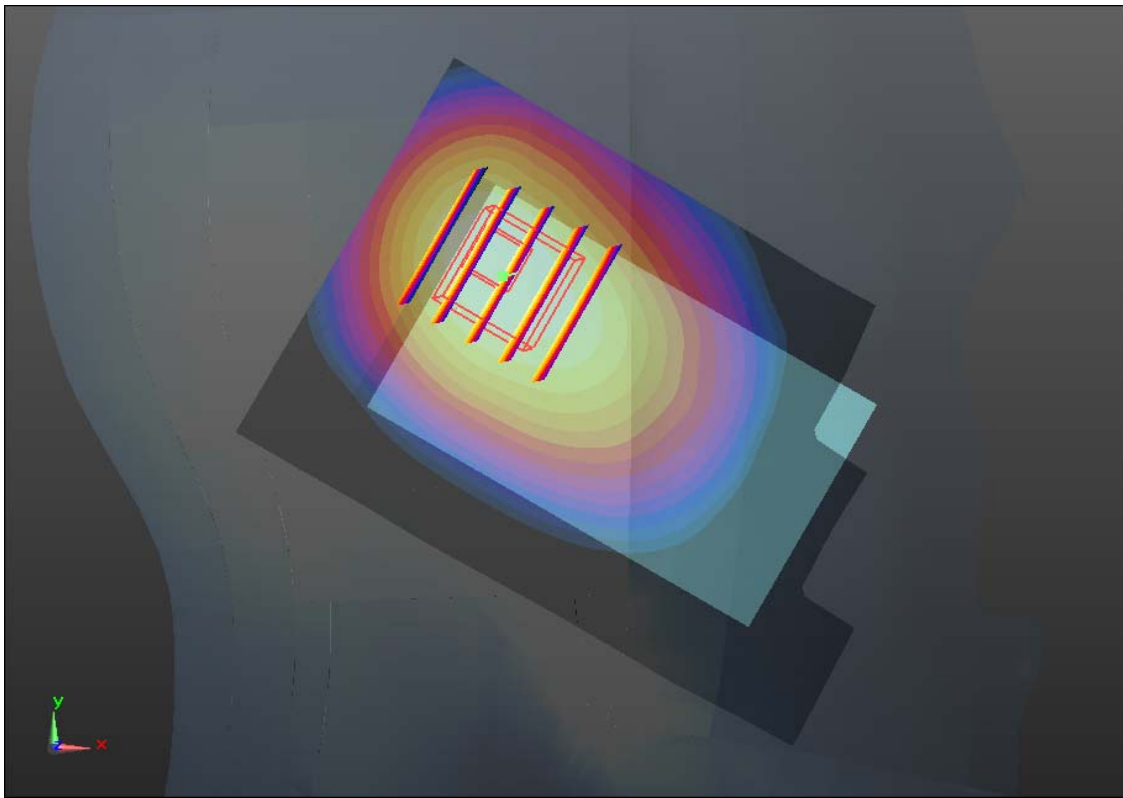
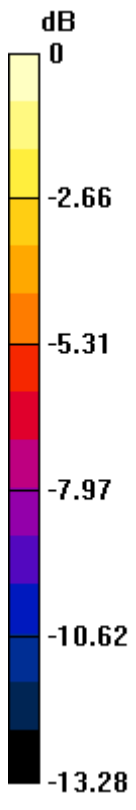
Ch128/Zoom Scan (5x5x7)/Cube 0: Measurement grid: dx=8mm, dy=8mm, dz=5mm

Reference Value = 16.950 V/m; Power Drift = 0.059 dB

Peak SAR (extrapolated) = 0.446 W/kg

SAR(1 g) = 0.272 mW/g; SAR(10 g) = 0.174 mW/g

Maximum value of SAR (measured) = 0.284 mW/g



0 dB = 0.280mW/g

#05 GSM1900_GSM Voice_Right Cheek_Ch810

DUT: 311501

Communication System: General GSM; Frequency: 1909.8 MHz; Duty Cycle: 1:8.3
Medium: HSL_1900_130121 Medium parameters used: $f = 1910$ MHz; $\sigma = 1.434$ mho/m; $\epsilon_r = 38.871$; $\rho = 1000$ kg/m³
Ambient Temperature : 23.2 °C ; Liquid Temperature : 21.2 °C

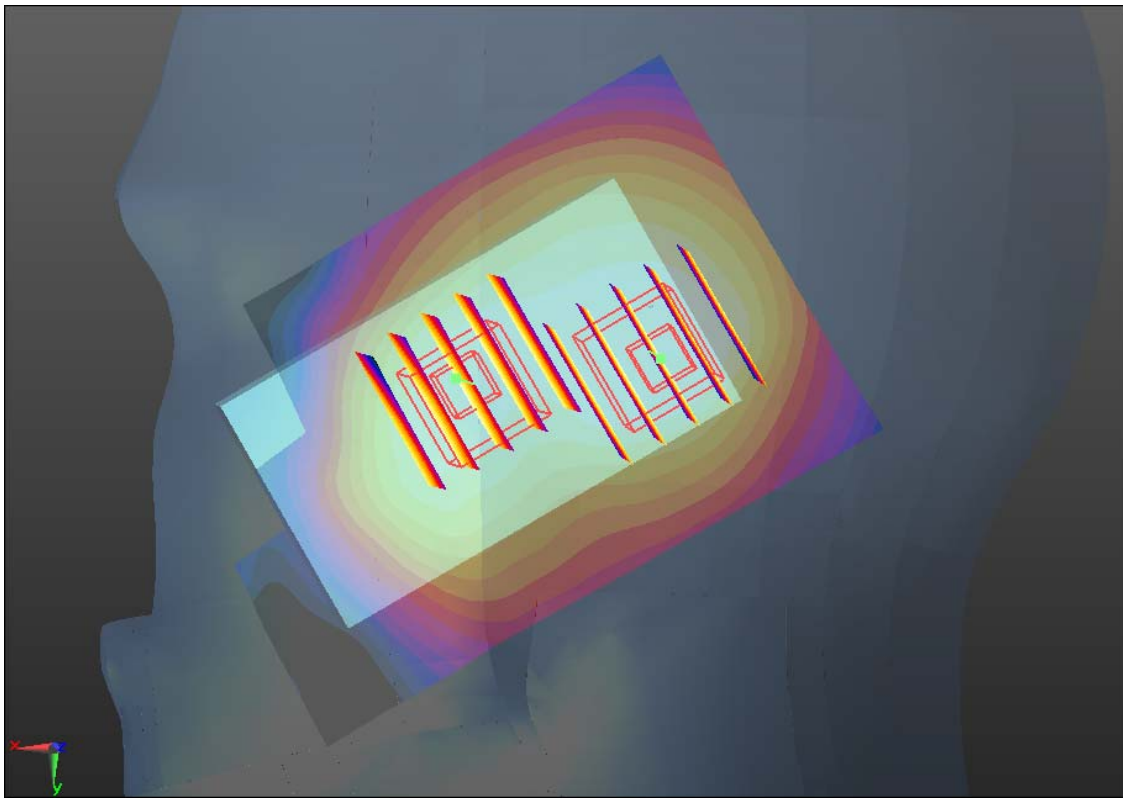
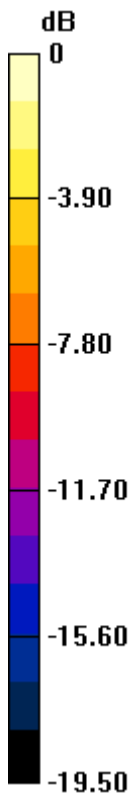
DASY5 Configuration:

- Probe: EX3DV4 - SN3857; ConvF(7.84, 7.84, 7.84); Calibrated: 2012-6-20
- Sensor-Surface: 2mm (Mechanical Surface Detection)
- Electronics: DAE4 Sn1210; Calibrated: 2012-12-5
- Phantom: SAM2; Type: SAM; Serial: TP-1477
- Measurement SW: DASY52, Version 52.8 (2); SEMCAD X Version 14.4.5 (3634)

Ch810/Area Scan (61x91x1): Measurement grid: dx=15mm, dy=15mm
Maximum value of SAR (interpolated) = 0.522 mW/g

Ch810/Zoom Scan (5x5x7)/Cube 0: Measurement grid: dx=8mm, dy=8mm, dz=5mm
Reference Value = 16.207 V/m; Power Drift = 0.04 dB
Peak SAR (extrapolated) = 0.908 W/kg
SAR(1 g) = 0.474 mW/g; SAR(10 g) = 0.251 mW/g
Maximum value of SAR (measured) = 0.531 mW/g

Ch810/Zoom Scan (5x5x7)/Cube 1: Measurement grid: dx=8mm, dy=8mm, dz=5mm
Reference Value = 16.207 V/m; Power Drift = 0.04 dB
Peak SAR (extrapolated) = 0.507 W/kg
SAR(1 g) = 0.348 mW/g; SAR(10 g) = 0.217 mW/g
Maximum value of SAR (measured) = 0.377 mW/g



0 dB = 0.380mW/g

#06 GSM1900_GSM Voice_Right Tilted_Ch810

DUT: 311501

Communication System: General GSM; Frequency: 1909.8 MHz; Duty Cycle: 1:8.3

Medium: HSL_1900_130121 Medium parameters used: $f = 1910$ MHz; $\sigma = 1.434$ mho/m; $\epsilon_r =$

38.871 ; $\rho = 1000$ kg/m³

Ambient Temperature : 23.2 °C ; Liquid Temperature : 21.2 °C

DASY5 Configuration:

- Probe: EX3DV4 - SN3857; ConvF(7.84, 7.84, 7.84); Calibrated: 2012-6-20
- Sensor-Surface: 2mm (Mechanical Surface Detection)
- Electronics: DAE4 Sn1210; Calibrated: 2012-12-5
- Phantom: SAM2; Type: SAM; Serial: TP-1477
- Measurement SW: DASY52, Version 52.8 (2); SEMCAD X Version 14.4.5 (3634)

Ch810/Area Scan (61x91x1): Measurement grid: dx=15mm, dy=15mm

Maximum value of SAR (interpolated) = 0.714 mW/g

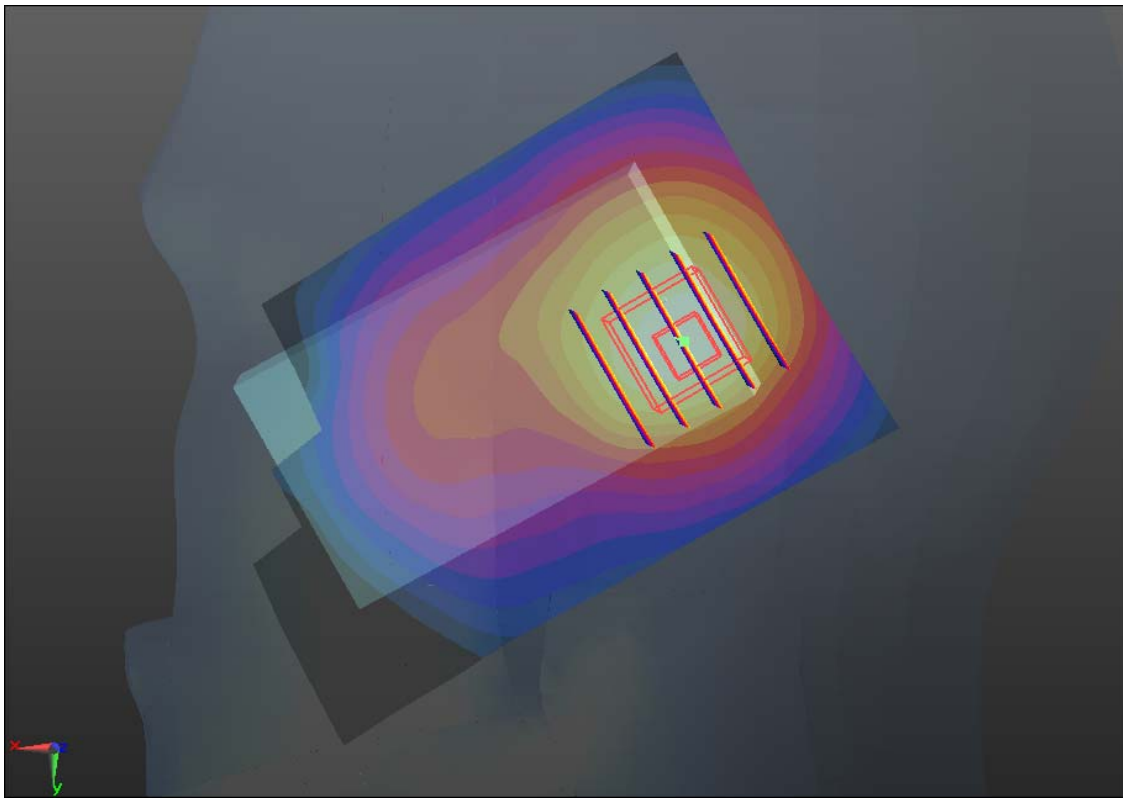
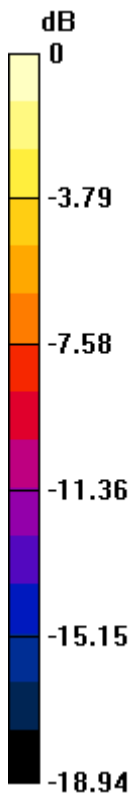
Ch810/Zoom Scan (5x5x7)/Cube 0: Measurement grid: dx=8mm, dy=8mm, dz=5mm

Reference Value = 19.704 V/m; Power Drift = -0.05 dB

Peak SAR (extrapolated) = 1.241 W/kg

SAR(1 g) = 0.632 mW/g; SAR(10 g) = 0.321 mW/g

Maximum value of SAR (measured) = 0.715 mW/g



0 dB = 0.720mW/g

#07 GSM1900_GSM Voice_Left Cheek_Ch810

DUT: 311501

Communication System: General GSM; Frequency: 1909.8 MHz; Duty Cycle: 1:8.3

Medium: HSL_1900_130121 Medium parameters used: $f = 1910$ MHz; $\sigma = 1.434$ mho/m; $\epsilon_r =$

38.871 ; $\rho = 1000$ kg/m³

Ambient Temperature : 23.2 °C ; Liquid Temperature : 21.2 °C

DASY5 Configuration:

- Probe: EX3DV4 - SN3857; ConvF(7.84, 7.84, 7.84); Calibrated: 2012-6-20
- Sensor-Surface: 2mm (Mechanical Surface Detection)
- Electronics: DAE4 Sn1210; Calibrated: 2012-12-5
- Phantom: SAM2; Type: SAM; Serial: TP-1477
- Measurement SW: DASY52, Version 52.8 (2); SEMCAD X Version 14.4.5 (3634)

Ch810/Area Scan (61x91x1): Measurement grid: dx=15mm, dy=15mm

Maximum value of SAR (interpolated) = 0.859 mW/g

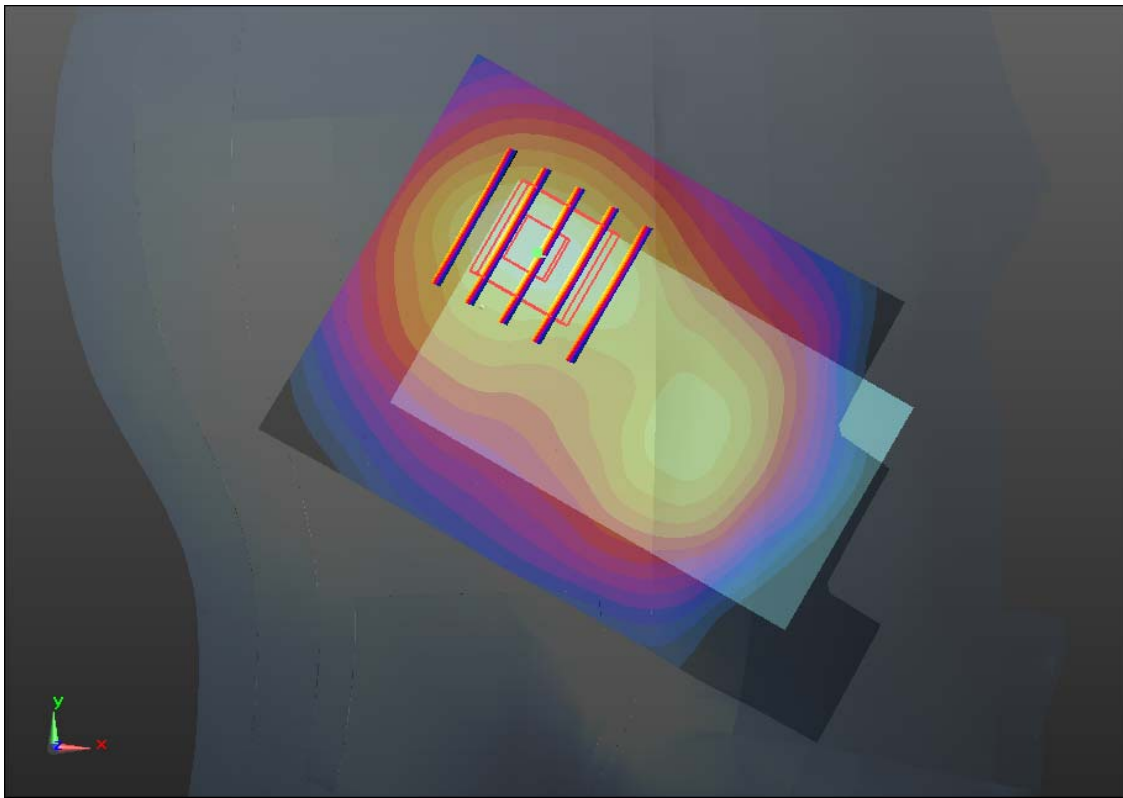
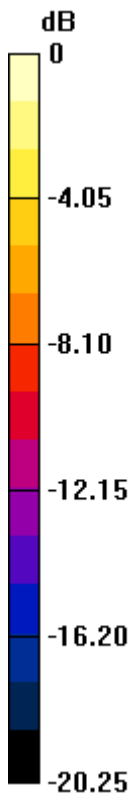
Ch810/Zoom Scan (5x5x7)/Cube 0: Measurement grid: dx=8mm, dy=8mm, dz=5mm

Reference Value = 17.773 V/m; Power Drift = 0.01 dB

Peak SAR (extrapolated) = 1.567 W/kg

SAR(1 g) = 0.750 mW/g; SAR(10 g) = 0.368 mW/g

Maximum value of SAR (measured) = 0.845 mW/g



0 dB = 0.840mW/g

#08 GSM1900_GSM Voice_Left Tilted_Ch810

DUT: 311501

Communication System: General GSM; Frequency: 1909.8 MHz; Duty Cycle: 1:8.3

Medium: HSL_1900_130121 Medium parameters used: $f = 1910$ MHz; $\sigma = 1.434$ mho/m; $\epsilon_r =$

38.871 ; $\rho = 1000$ kg/m³

Ambient Temperature : 23.2 °C; Liquid Temperature : 21.2 °C

DASY5 Configuration:

- Probe: EX3DV4 - SN3857; ConvF(7.84, 7.84, 7.84); Calibrated: 2012-6-20
- Sensor-Surface: 2mm (Mechanical Surface Detection)
- Electronics: DAE4 Sn1210; Calibrated: 2012-12-5
- Phantom: SAM2; Type: SAM; Serial: TP-1477
- Measurement SW: DASY52, Version 52.8 (2); SEMCAD X Version 14.4.5 (3634)

Ch810/Area Scan (61x91x1): Measurement grid: dx=15mm, dy=15mm

Maximum value of SAR (interpolated) = 1.042 mW/g

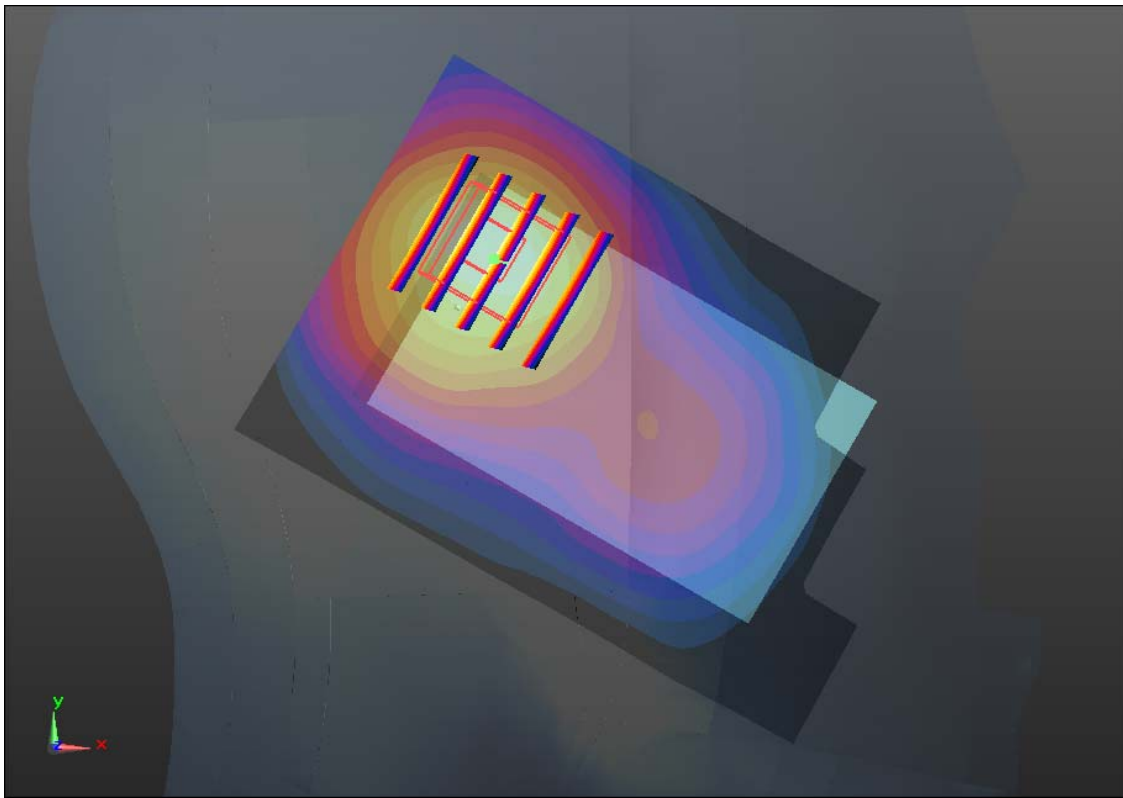
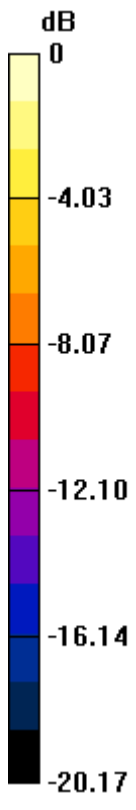
Ch810/Zoom Scan (5x5x7)/Cube 0: Measurement grid: dx=8mm, dy=8mm, dz=5mm

Reference Value = 21.592 V/m; Power Drift = -0.06 dB

Peak SAR (extrapolated) = 1.869 W/kg

SAR(1 g) = 0.897 mW/g; SAR(10 g) = 0.426 mW/g

Maximum value of SAR (measured) = 0.991 mW/g



0 dB = 0.990mW/g

#09 GSM1900_GSM Voice_Left Cheek_Ch512

DUT: 311501

Communication System: General GSM; Frequency: 1850.2 MHz; Duty Cycle: 1:8.3

Medium: HSL_1900_130121 Medium parameters used: $f = 1850.2$ MHz; $\sigma = 1.374$ mho/m; $\epsilon_r =$

39.102 ; $\rho = 1000$ kg/m³

Ambient Temperature : 23.2 °C ; Liquid Temperature : 21.2 °C

DASY5 Configuration:

- Probe: EX3DV4 - SN3857; ConvF(7.84, 7.84, 7.84); Calibrated: 2012-6-20
- Sensor-Surface: 2mm (Mechanical Surface Detection)
- Electronics: DAE4 Sn1210; Calibrated: 2012-12-5
- Phantom: SAM2; Type: SAM; Serial: TP-1477
- Measurement SW: DASY52, Version 52.8 (2); SEMCAD X Version 14.4.5 (3634)

Ch512/Area Scan (61x91x1): Measurement grid: dx=15mm, dy=15mm

Maximum value of SAR (interpolated) = 0.901 mW/g

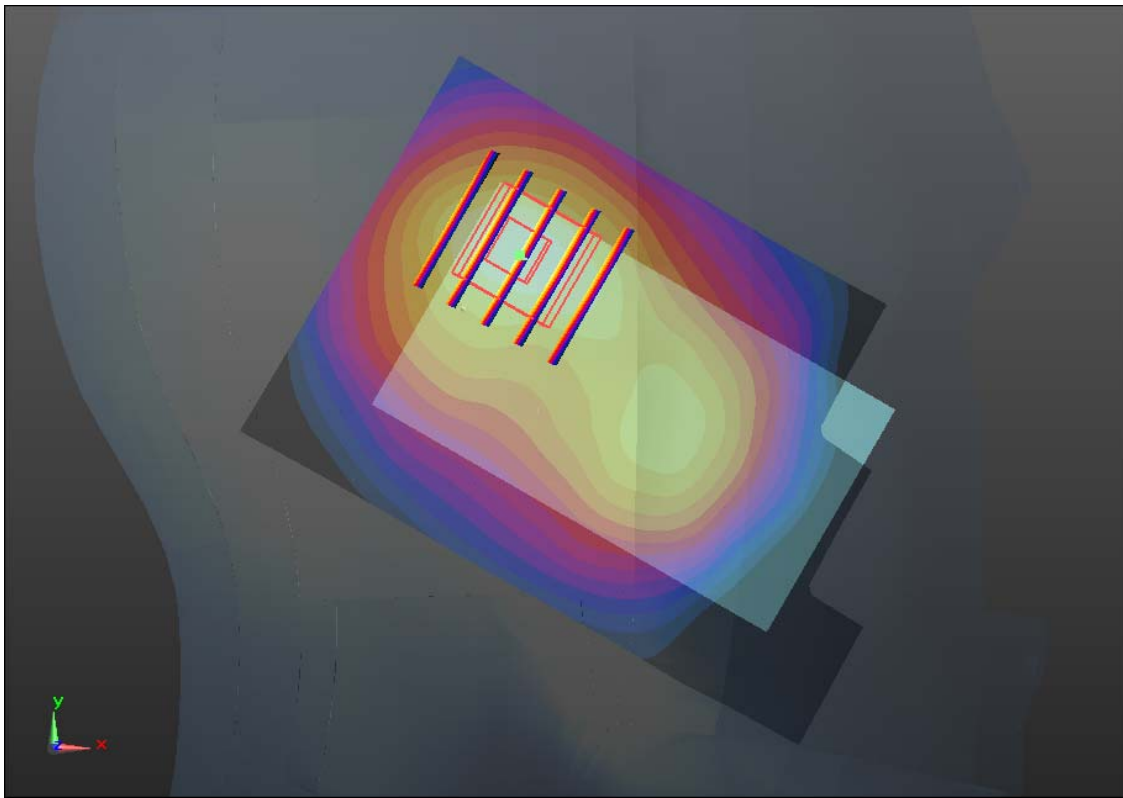
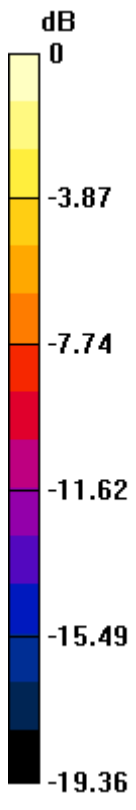
Ch512/Zoom Scan (5x5x7)/Cube 0: Measurement grid: dx=8mm, dy=8mm, dz=5mm

Reference Value = 18.109 V/m; Power Drift = -0.06 dB

Peak SAR (extrapolated) = 1.557 W/kg

SAR(1 g) = 0.763 mW/g; SAR(10 g) = 0.376 mW/g

Maximum value of SAR (measured) = 0.856 mW/g



0 dB = 0.860mW/g

#10 GSM1900_GSM Voice_Left Cheek_Ch661

DUT: 311501

Communication System: General GSM; Frequency: 1880 MHz; Duty Cycle: 1:8.3

Medium: HSL_1900_130121 Medium parameters used: $f = 1880$ MHz; $\sigma = 1.404$ mho/m; $\epsilon_r =$

39.005 ; $\rho = 1000$ kg/m³

Ambient Temperature : 23.2 °C ; Liquid Temperature : 21.2 °C

DASY5 Configuration:

- Probe: EX3DV4 - SN3857; ConvF(7.84, 7.84, 7.84); Calibrated: 2012-6-20
- Sensor-Surface: 2mm (Mechanical Surface Detection)
- Electronics: DAE4 Sn1210; Calibrated: 2012-12-5
- Phantom: SAM2; Type: SAM; Serial: TP-1477
- Measurement SW: DASY52, Version 52.8 (2); SEMCAD X Version 14.4.5 (3634)

Ch661/Area Scan (61x91x1): Measurement grid: dx=15mm, dy=15mm

Maximum value of SAR (interpolated) = 0.945 mW/g

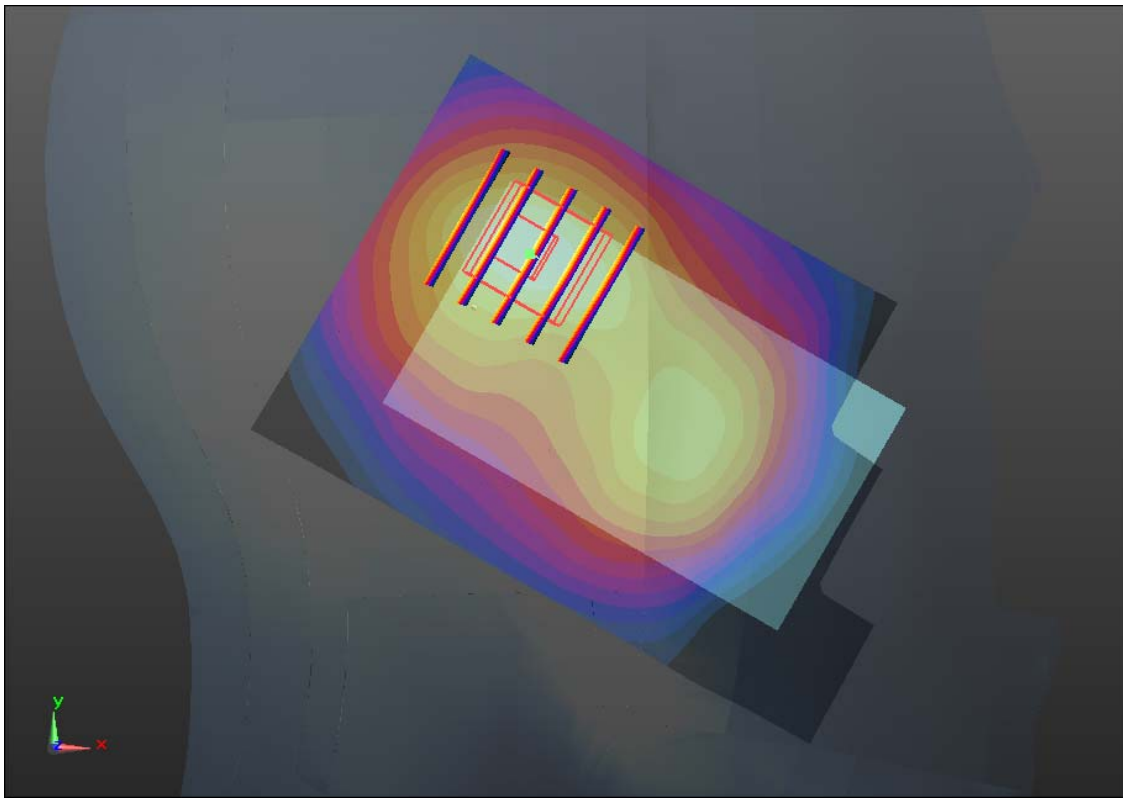
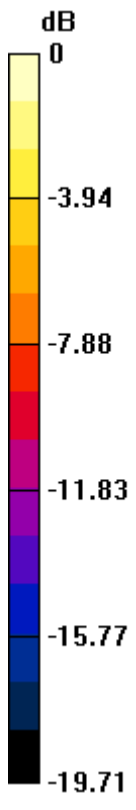
Ch661/Zoom Scan (5x5x7)/Cube 0: Measurement grid: dx=8mm, dy=8mm, dz=5mm

Reference Value = 18.915 V/m; Power Drift = 0.03 dB

Peak SAR (extrapolated) = 1.698 W/kg

SAR(1 g) = 0.824 mW/g; SAR(10 g) = 0.404 mW/g

Maximum value of SAR (measured) = 0.922 mW/g



0 dB = 0.920mW/g

#11 GSM1900_GSM Voice_Left Tilted_Ch512

DUT: 311501

Communication System: General GSM; Frequency: 1850.2 MHz; Duty Cycle: 1:8.3

Medium: HSL_1900_130121 Medium parameters used: $f = 1850.2$ MHz; $\sigma = 1.374$ mho/m; $\epsilon_r =$

39.102 ; $\rho = 1000$ kg/m³

Ambient Temperature : 23.2 °C ; Liquid Temperature : 21.2 °C

DASY5 Configuration:

- Probe: EX3DV4 - SN3857; ConvF(7.84, 7.84, 7.84); Calibrated: 2012-6-20
- Sensor-Surface: 2mm (Mechanical Surface Detection)
- Electronics: DAE4 Sn1210; Calibrated: 2012-12-5
- Phantom: SAM2; Type: SAM; Serial: TP-1477
- Measurement SW: DASY52, Version 52.8 (2); SEMCAD X Version 14.4.5 (3634)

Ch512/Area Scan (61x91x1): Measurement grid: dx=15mm, dy=15mm

Maximum value of SAR (interpolated) = 0.908 mW/g

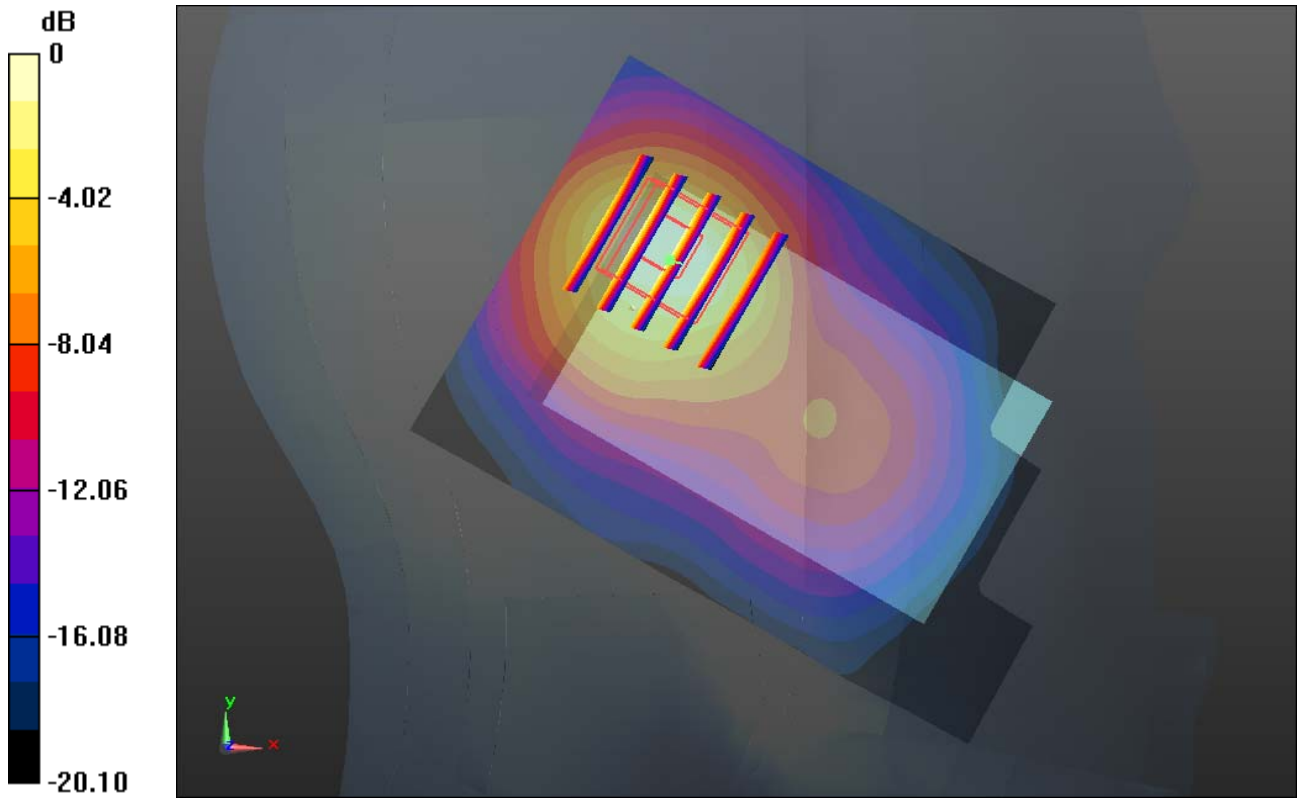
Ch512/Zoom Scan (5x5x7)/Cube 0: Measurement grid: dx=8mm, dy=8mm, dz=5mm

Reference Value = 20.088 V/m; Power Drift = -0.02 dB

Peak SAR (extrapolated) = 1.596 W/kg

SAR(1 g) = 0.774 mW/g; SAR(10 g) = 0.372 mW/g

Maximum value of SAR (measured) = 0.842 mW/g



0 dB = 0.840mW/g

#12 GSM1900_GSM Voice_Left Tilted_Ch661

DUT: 311501

Communication System: General GSM; Frequency: 1880 MHz; Duty Cycle: 1:8.3

Medium: HSL_1900_130121 Medium parameters used: $f = 1880$ MHz; $\sigma = 1.404$ mho/m; $\epsilon_r =$

39.005 ; $\rho = 1000$ kg/m³

Ambient Temperature : 23.2 °C ; Liquid Temperature : 21.2 °C

DASY5 Configuration:

- Probe: EX3DV4 - SN3857; ConvF(7.84, 7.84, 7.84); Calibrated: 2012-6-20
- Sensor-Surface: 2mm (Mechanical Surface Detection)
- Electronics: DAE4 Sn1210; Calibrated: 2012-12-5
- Phantom: SAM2; Type: SAM; Serial: TP-1477
- Measurement SW: DASY52, Version 52.8 (2); SEMCAD X Version 14.4.5 (3634)

Ch661/Area Scan (61x91x1): Measurement grid: dx=15mm, dy=15mm

Maximum value of SAR (interpolated) = 1.083 mW/g

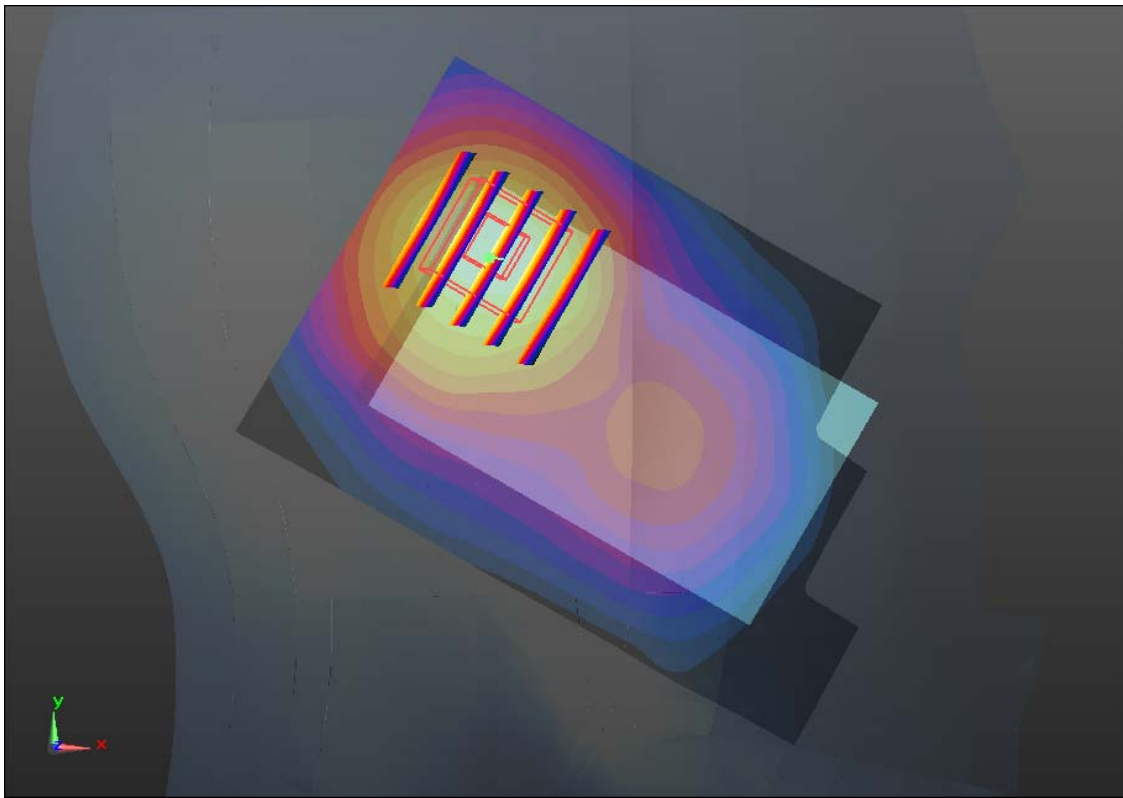
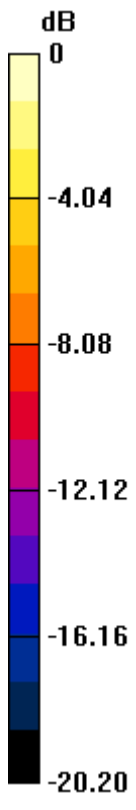
Ch661/Zoom Scan (5x5x7)/Cube 0: Measurement grid: dx=8mm, dy=8mm, dz=5mm

Reference Value = 21.995 V/m; Power Drift = -0.072 dB

Peak SAR (extrapolated) = 1.988 W/kg

SAR(1 g) = 0.947 mW/g; SAR(10 g) = 0.451 mW/g

Maximum value of SAR (measured) = 1.044 mW/g



0 dB = 1.040mW/g

#12 GSM1900_GSM Voice_Left Tilted_Ch661_2D

DUT: 311501

Communication System: General GSM; Frequency: 1880 MHz; Duty Cycle: 1:8.3

Medium: HSL_1900_130121 Medium parameters used: $f = 1880$ MHz; $\sigma = 1.404$ mho/m; $\epsilon_r =$

39.005 ; $\rho = 1000$ kg/m³

Ambient Temperature : 23.2 °C ; Liquid Temperature : 21.2 °C

DASY5 Configuration:

- Probe: EX3DV4 - SN3857; ConvF(7.84, 7.84, 7.84); Calibrated: 2012-6-20
- Sensor-Surface: 2mm (Mechanical Surface Detection)
- Electronics: DAE4 Sn1210; Calibrated: 2012-12-5
- Phantom: SAM2; Type: SAM; Serial: TP-1477
- Measurement SW: DASY52, Version 52.8 (2); SEMCAD X Version 14.4.5 (3634)

Ch661/Area Scan (61x91x1): Measurement grid: dx=15mm, dy=15mm

Maximum value of SAR (interpolated) = 1.083 mW/g

Ch661/Zoom Scan (5x5x7)/Cube 0: Measurement grid: dx=8mm, dy=8mm, dz=5mm

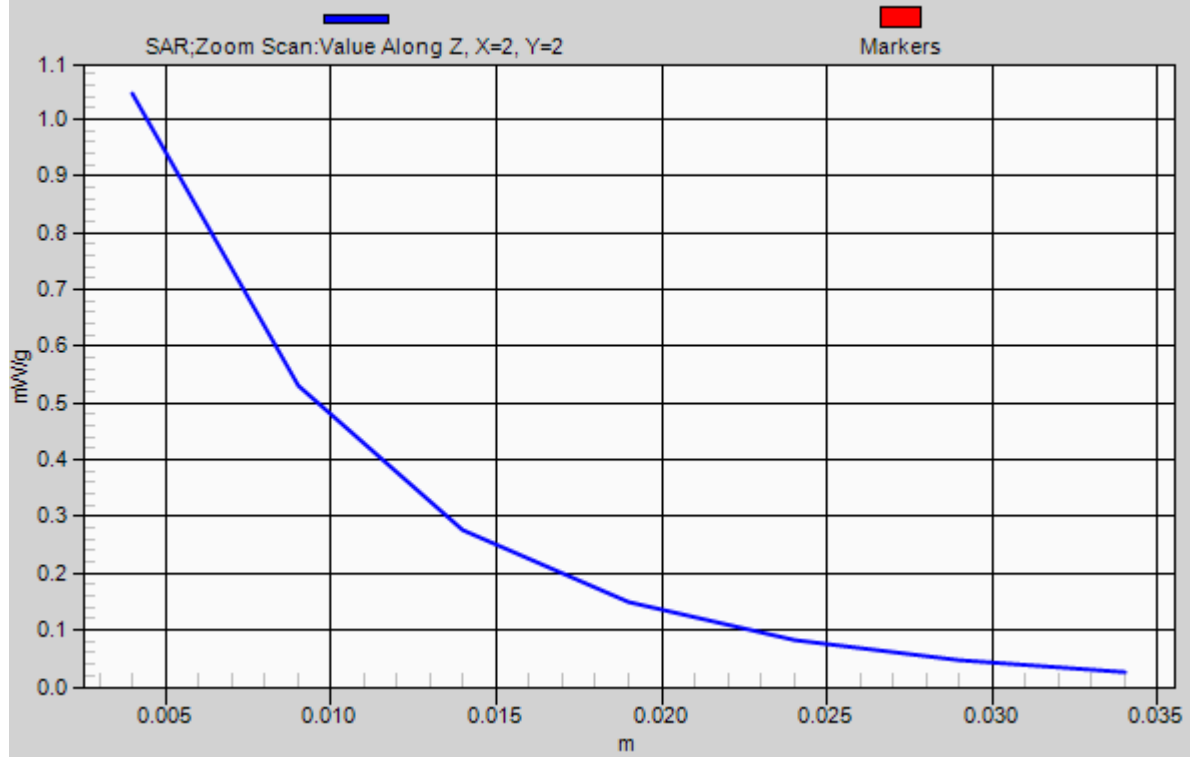
Reference Value = 21.995 V/m; Power Drift = -0.072 dB

Peak SAR (extrapolated) = 1.988 W/kg

SAR(1 g) = 0.947 mW/g; SAR(10 g) = 0.451 mW/g

Maximum value of SAR (measured) = 1.044 mW/g

1g/10g Averaged SAR



#13 GSM1900_GSM Voice_Left Tilted_Ch661_Repeat SAR

DUT: 311501

Communication System: General GSM; Frequency: 1880 MHz; Duty Cycle: 1:8.3

Medium: HSL_1900_130121 Medium parameters used: $f = 1880$ MHz; $\sigma = 1.404$ mho/m; $\epsilon_r =$

39.005; $\rho = 1000$ kg/m³

Ambient Temperature : 23.2 °C; Liquid Temperature : 21.2 °C

DASY5 Configuration:

- Probe: EX3DV4 - SN3857; ConvF(7.84, 7.84, 7.84); Calibrated: 2012-6-20
- Sensor-Surface: 2mm (Mechanical Surface Detection)
- Electronics: DAE4 Sn1210; Calibrated: 2012-12-5
- Phantom: SAM2; Type: SAM; Serial: TP-1477
- Measurement SW: DASY52, Version 52.8 (2); SEMCAD X Version 14.4.5 (3634)

Ch661/Area Scan (61x91x1): Measurement grid: dx=15mm, dy=15mm

Maximum value of SAR (interpolated) = 1.082 mW/g

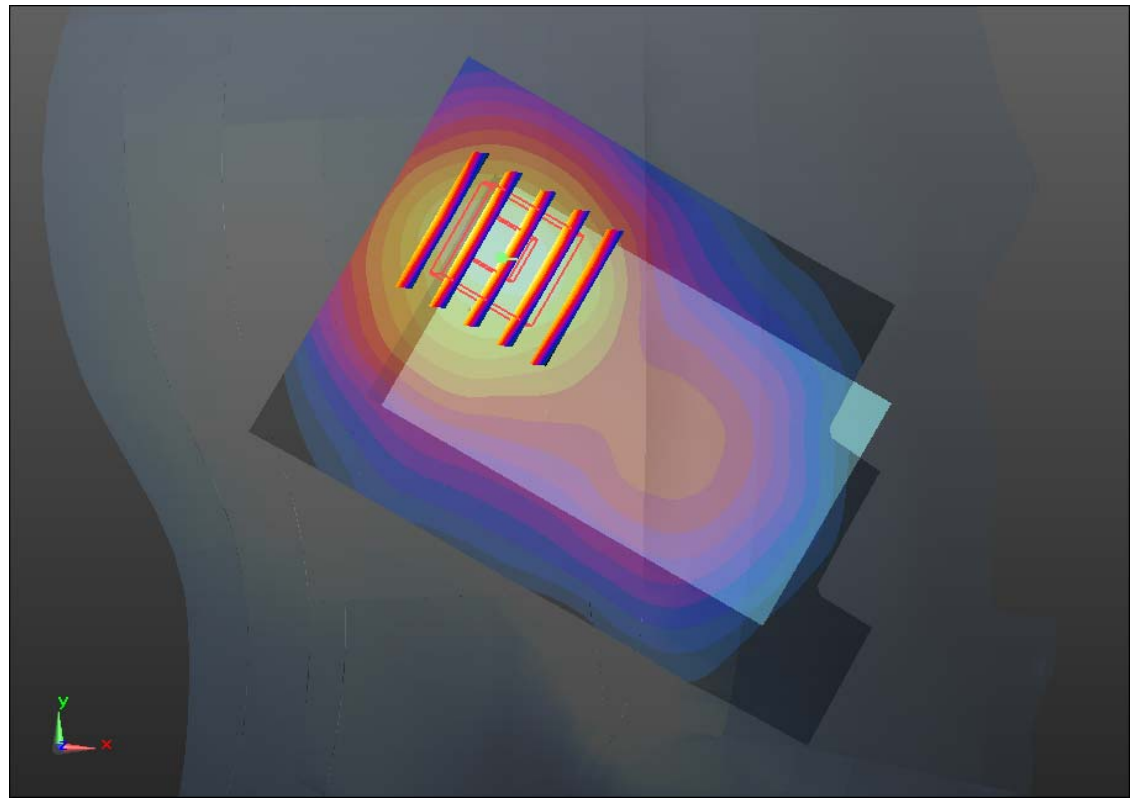
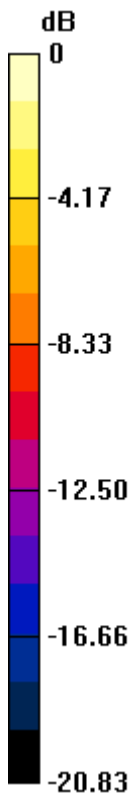
Ch661/Zoom Scan (5x5x7)/Cube 0: Measurement grid: dx=8mm, dy=8mm, dz=5mm

Reference Value = 21.780 V/m; Power Drift = 0.04 dB

Peak SAR (extrapolated) = 1.950 W/kg

SAR(1 g) = 0.933 mW/g; SAR(10 g) = 0.446 mW/g

Maximum value of SAR (measured) = 1.031 mW/g



0 dB = 1.030mW/g

#14 GSM850_GSM Voice_Front_1.5cm_Ch128

DUT: 311501

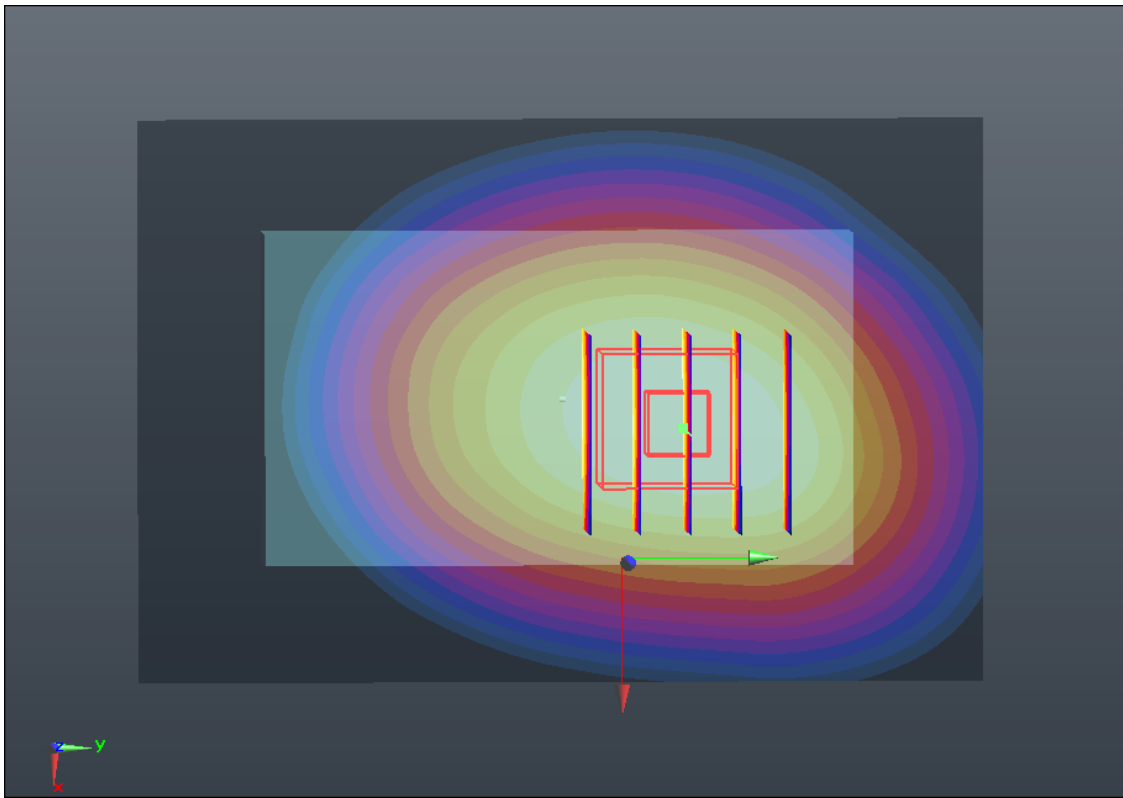
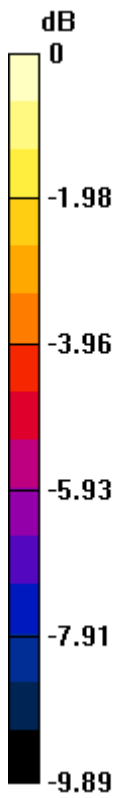
Communication System: General GSM; Frequency: 824.2 MHz; Duty Cycle: 1:8.3
Medium: MSL_835_130121 Medium parameters used: $f = 824.2$ MHz; $\sigma = 0.972$ mho/m; $\epsilon_r = 54.947$; $\rho = 1000$ kg/m³
Ambient Temperature : 23.2 °C; Liquid Temperature : 21.3 °C

DASY5 Configuration:

- Probe: EX3DV4 - SN3857; ConvF(8.98, 8.98, 8.98); Calibrated: 2012-6-20
- Sensor-Surface: 2mm (Mechanical Surface Detection)
- Electronics: DAE4 Sn1210; Calibrated: 2012-12-5
- Phantom: SAM2; Type: SAM; Serial: TP-1477
- Measurement SW: DASY52, Version 52.8 (2); SEMCAD X Version 14.4.5 (3634)

Ch128/Area Scan (61x91x1): Measurement grid: dx=15mm, dy=15mm
Maximum value of SAR (interpolated) = 0.144 mW/g

Ch128/Zoom Scan (5x5x7)/Cube 0: Measurement grid: dx=8mm, dy=8mm, dz=5mm
Reference Value = 10.624 V/m; Power Drift = -0.03 dB
Peak SAR (extrapolated) = 0.159 W/kg
SAR(1 g) = 0.120 mW/g; SAR(10 g) = 0.086 mW/g
Maximum value of SAR (measured) = 0.142 mW/g



0 dB = 0.140mW/g

#15 GSM850_GSM Voice_Back_1.5cm_Ch128

DUT: 311501

Communication System: General GSM; Frequency: 824.2 MHz; Duty Cycle: 1:8.3

Medium: MSL_835_130121 Medium parameters used: $f = 824.2$ MHz; $\sigma = 0.972$ mho/m; $\epsilon_r =$

54.947 ; $\rho = 1000$ kg/m³

Ambient Temperature : 23.2 °C ; Liquid Temperature : 21.3 °C

DASY5 Configuration:

- Probe: EX3DV4 - SN3857; ConvF(8.98, 8.98, 8.98); Calibrated: 2012-6-20
- Sensor-Surface: 2mm (Mechanical Surface Detection)
- Electronics: DAE4 Sn1210; Calibrated: 2012-12-5
- Phantom: SAM2; Type: SAM; Serial: TP-1477
- Measurement SW: DASY52, Version 52.8 (2); SEMCAD X Version 14.4.5 (3634)

Ch128/Area Scan (61x91x1): Measurement grid: dx=15mm, dy=15mm

Maximum value of SAR (interpolated) = 0.485 mW/g

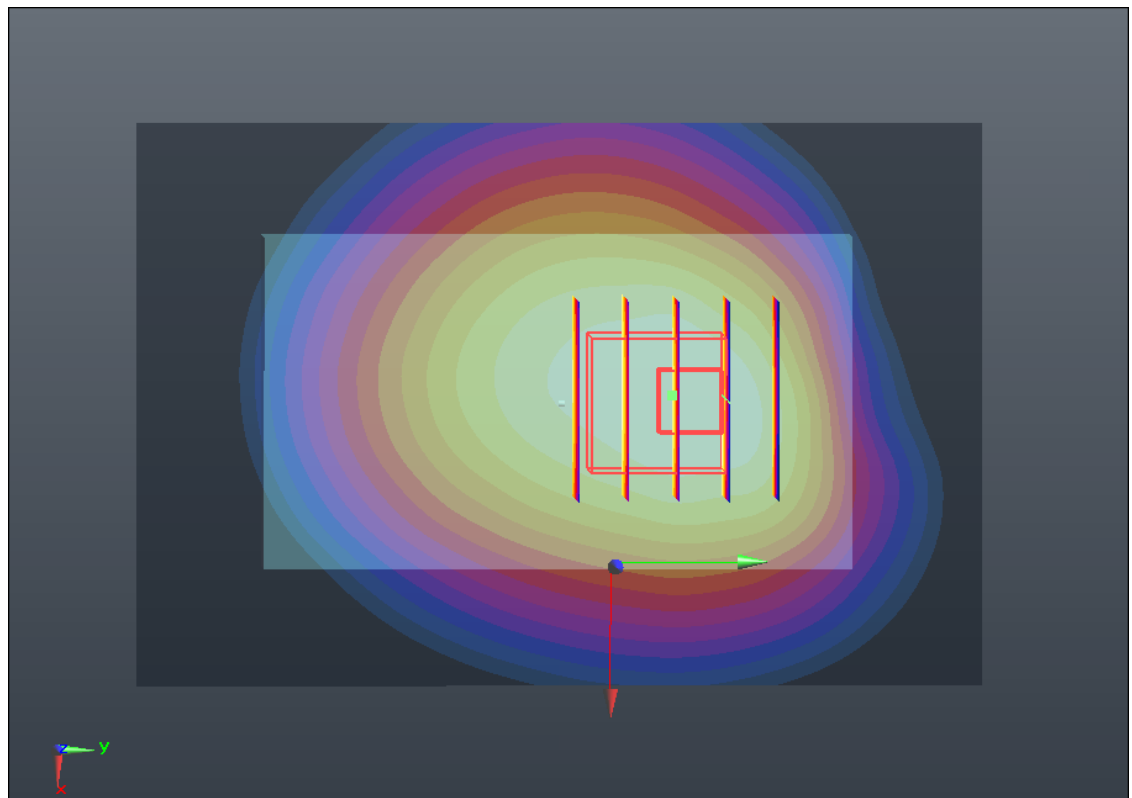
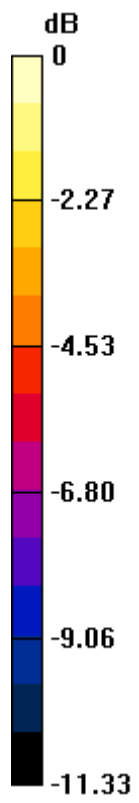
Ch128/Zoom Scan (5x5x7)/Cube 0: Measurement grid: dx=8mm, dy=8mm, dz=5mm

Reference Value = 19.138 V/m; Power Drift = 0.035 dB

Peak SAR (extrapolated) = 0.533 W/kg

SAR(1 g) = 0.386 mW/g; SAR(10 g) = 0.272 mW/g

Maximum value of SAR (measured) = 0.461 mW/g



0 dB = 0.460mW/g

#15 GSM850_GSM Voice_Back_1.5cm_Ch128_2D

DUT: 311501

Communication System: General GSM; Frequency: 824.2 MHz; Duty Cycle: 1:8.3
Medium: MSL_835_130121 Medium parameters used: $f = 824.2$ MHz; $\sigma = 0.972$ mho/m; $\epsilon_r = 54.947$; $\rho = 1000$ kg/m³
Ambient Temperature : 23.2 °C ; Liquid Temperature : 21.3 °C

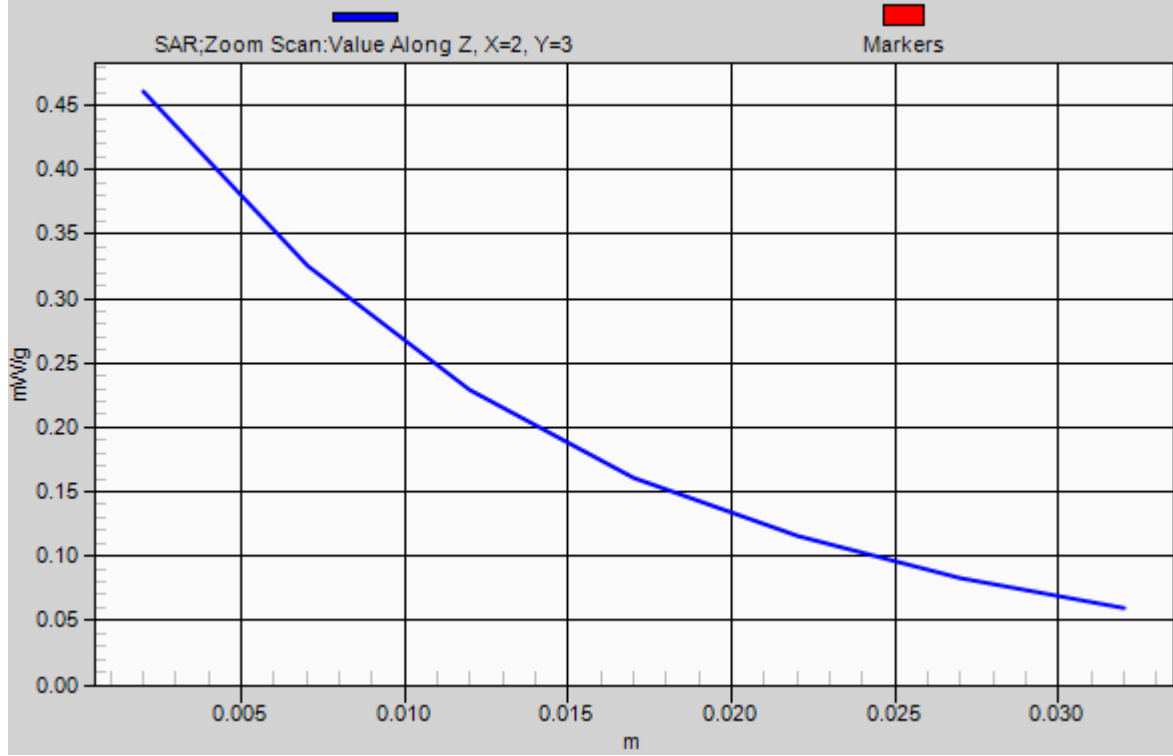
DASY5 Configuration:

- Probe: EX3DV4 - SN3857; ConvF(8.98, 8.98, 8.98); Calibrated: 2012-6-20
- Sensor-Surface: 2mm (Mechanical Surface Detection)
- Electronics: DAE4 Sn1210; Calibrated: 2012-12-5
- Phantom: SAM2; Type: SAM; Serial: TP-1477
- Measurement SW: DASY52, Version 52.8 (2); SEMCAD X Version 14.4.5 (3634)

Ch128/Area Scan (61x91x1): Measurement grid: dx=15mm, dy=15mm
Maximum value of SAR (interpolated) = 0.485 mW/g

Ch128/Zoom Scan (5x5x7)/Cube 0: Measurement grid: dx=8mm, dy=8mm, dz=5mm
Reference Value = 19.138 V/m; Power Drift = 0.035 dB
Peak SAR (extrapolated) = 0.533 W/kg
SAR(1 g) = 0.386 mW/g; SAR(10 g) = 0.272 mW/g
Maximum value of SAR (measured) = 0.461 mW/g

1g/10g Averaged SAR



#16 GSM1900_GSM Voice_Front_1.5cm_Ch810

DUT: 311501

Communication System: General GSM; Frequency: 1909.8 MHz; Duty Cycle: 1:8.3

Medium: MSL_1900_130121 Medium parameters used: $f = 1910$ MHz; $\sigma = 1.555$ mho/m; $\epsilon_r =$

53.206; $\rho = 1000$ kg/m³

Ambient Temperature : 23.1 °C ; Liquid Temperature : 21.1 °C

DASY5 Configuration:

- Probe: EX3DV4 - SN3857; ConvF(7.35, 7.35, 7.35); Calibrated: 2012-6-20
- Sensor-Surface: 2mm (Mechanical Surface Detection)
- Electronics: DAE4 Sn1210; Calibrated: 2012-12-5
- Phantom: SAM1; Type: SAM; Serial: TP-1479
- Measurement SW: DASY52, Version 52.8 (2); SEMCAD X Version 14.4.5 (3634)

Ch810/Area Scan (61x91x1): Measurement grid: dx=15mm, dy=15mm

Maximum value of SAR (interpolated) = 0.154 mW/g

Ch810/Zoom Scan (5x5x7)/Cube 0: Measurement grid: dx=8mm, dy=8mm, dz=5mm

Reference Value = 6.580 V/m; Power Drift = 0.14 dB

Peak SAR (extrapolated) = 0.189 W/kg

SAR(1 g) = 0.115 mW/g; SAR(10 g) = 0.066 mW/g

Maximum value of SAR (measured) = 0.155 mW/g

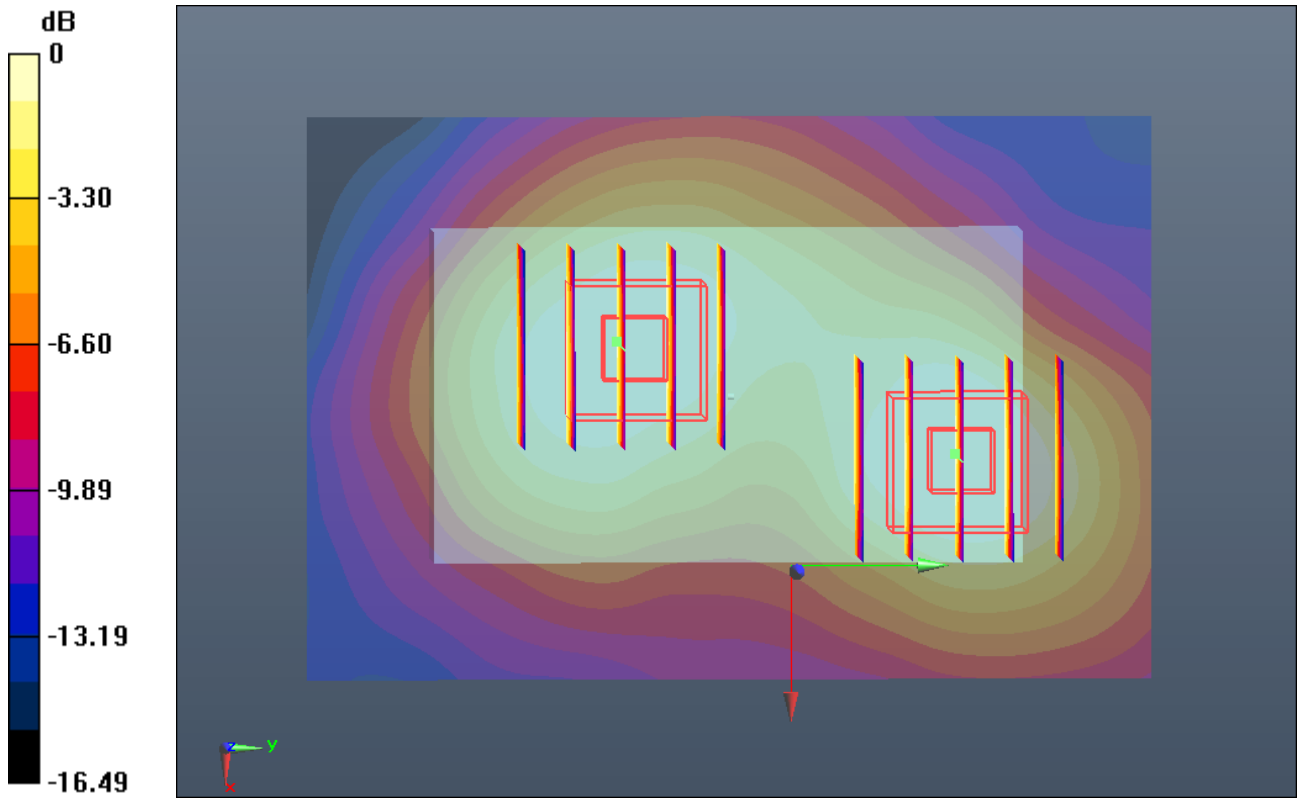
Ch810/Zoom Scan (5x5x7)/Cube 1: Measurement grid: dx=8mm, dy=8mm, dz=5mm

Reference Value = 6.580 V/m; Power Drift = 0.14 dB

Peak SAR (extrapolated) = 0.141 W/kg

SAR(1 g) = 0.096 mW/g; SAR(10 g) = 0.061 mW/g

Maximum value of SAR (measured) = 0.120 mW/g



0 dB = 0.120mW/g

#17 GSM1900_GSM Voice_Back_1.5cm_Ch810

DUT: 311501

Communication System: General GSM; Frequency: 1909.8 MHz; Duty Cycle: 1:8.3

Medium: MSL_1900_130121 Medium parameters used: $f = 1910$ MHz; $\sigma = 1.555$ mho/m; $\epsilon_r =$

53.206; $\rho = 1000$ kg/m³

Ambient Temperature : 23.1 °C ; Liquid Temperature : 21.1 °C

DASY5 Configuration:

- Probe: EX3DV4 - SN3857; ConvF(7.35, 7.35, 7.35); Calibrated: 2012-6-20
- Sensor-Surface: 2mm (Mechanical Surface Detection)
- Electronics: DAE4 Sn1210; Calibrated: 2012-12-5
- Phantom: SAM1; Type: SAM; Serial: TP-1479
- Measurement SW: DASY52, Version 52.8 (2); SEMCAD X Version 14.4.5 (3634)

Ch810/Area Scan (61x91x1): Measurement grid: dx=15mm, dy=15mm

Maximum value of SAR (interpolated) = 0.378 mW/g

Ch810/Zoom Scan (5x5x7)/Cube 0: Measurement grid: dx=8mm, dy=8mm, dz=5mm

Reference Value = 13.036 V/m; Power Drift = -0.09 dB

Peak SAR (extrapolated) = 0.445 W/kg

SAR(1 g) = 0.296 mW/g; SAR(10 g) = 0.187 mW/g

Maximum value of SAR (measured) = 0.377 mW/g

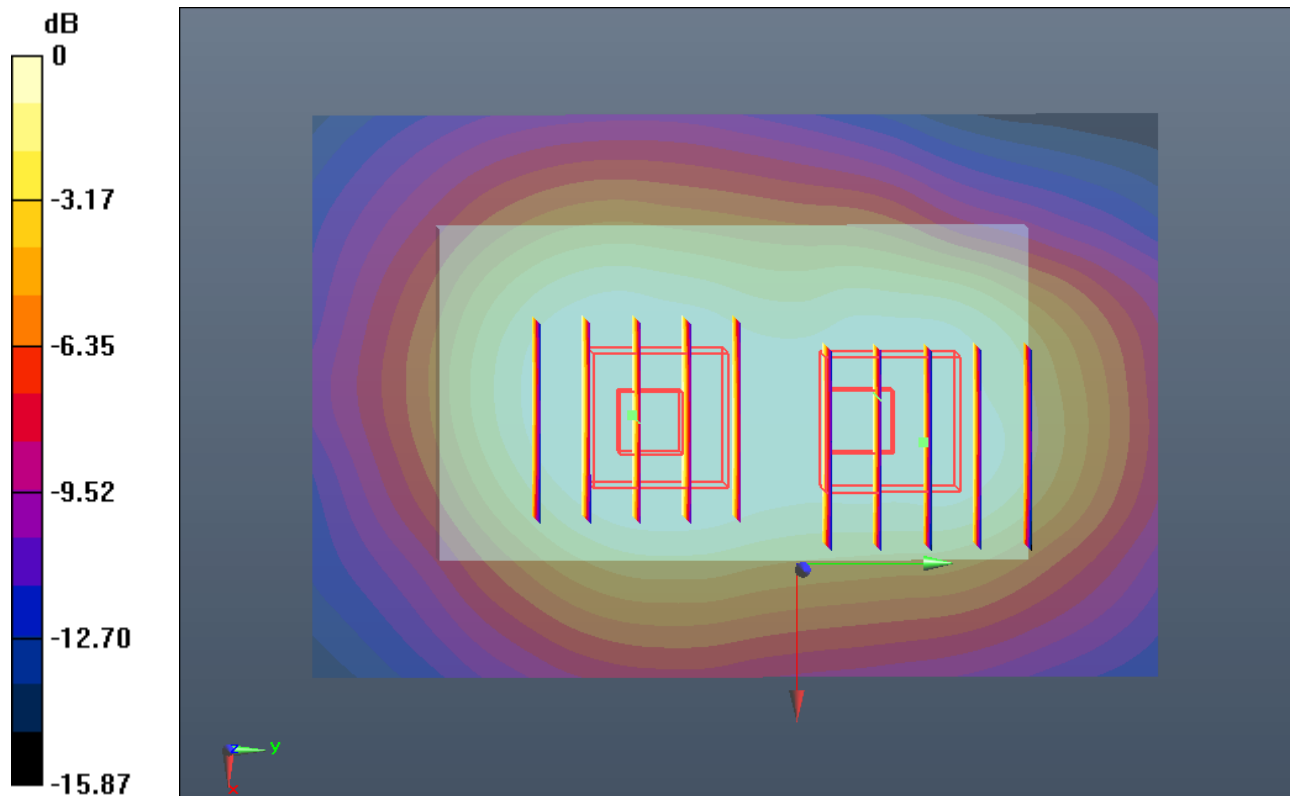
Ch810/Zoom Scan (5x5x7)/Cube 1: Measurement grid: dx=8mm, dy=8mm, dz=5mm

Reference Value = 13.036 V/m; Power Drift = -0.09 dB

Peak SAR (extrapolated) = 0.357 W/kg

SAR(1 g) = 0.225 mW/g; SAR(10 g) = 0.139 mW/g

Maximum value of SAR (measured) = 0.286 mW/g



0 dB = 0.290mW/g

#17 GSM1900_GSM Voice_Back_1.5cm_Ch810_2D

DUT: 311501

Communication System: General GSM; Frequency: 1909.8 MHz; Duty Cycle: 1:8.3
Medium: MSL_1900_130121 Medium parameters used: $f = 1910$ MHz; $\sigma = 1.555$ mho/m; $\epsilon_r = 53.206$; $\rho = 1000$ kg/m³
Ambient Temperature : 23.1 °C ; Liquid Temperature : 21.1 °C

DASY5 Configuration:

- Probe: EX3DV4 - SN3857; ConvF(7.35, 7.35, 7.35); Calibrated: 2012-6-20
- Sensor-Surface: 2mm (Mechanical Surface Detection)
- Electronics: DAE4 Sn1210; Calibrated: 2012-12-5
- Phantom: SAM1; Type: SAM; Serial: TP-1479
- Measurement SW: DASY52, Version 52.8 (2); SEMCAD X Version 14.4.5 (3634)

Ch810/Area Scan (61x91x1): Measurement grid: dx=15mm, dy=15mm
Maximum value of SAR (interpolated) = 0.378 mW/g

Ch810/Zoom Scan (5x5x7)/Cube 0: Measurement grid: dx=8mm, dy=8mm, dz=5mm
Reference Value = 13.036 V/m; Power Drift = -0.09 dB
Peak SAR (extrapolated) = 0.445 W/kg
SAR(1 g) = 0.296 mW/g; SAR(10 g) = 0.187 mW/g
Maximum value of SAR (measured) = 0.377 mW/g

Ch810/Zoom Scan (5x5x7)/Cube 1: Measurement grid: dx=8mm, dy=8mm, dz=5mm
Reference Value = 13.036 V/m; Power Drift = -0.09 dB
Peak SAR (extrapolated) = 0.357 W/kg
SAR(1 g) = 0.225 mW/g; SAR(10 g) = 0.139 mW/g
Maximum value of SAR (measured) = 0.286 mW/g

1g/10g Averaged SAR

