

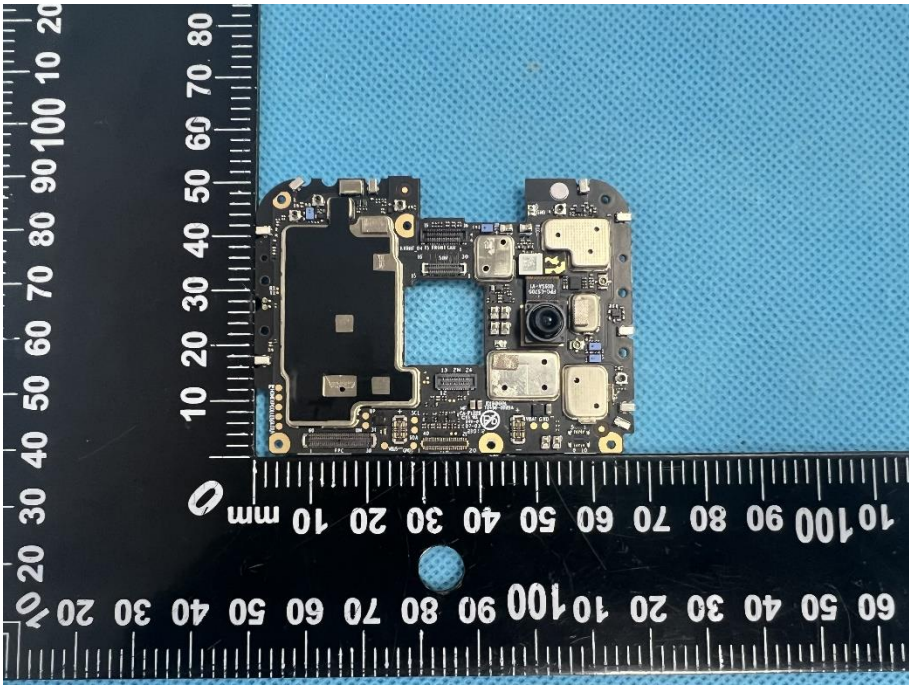
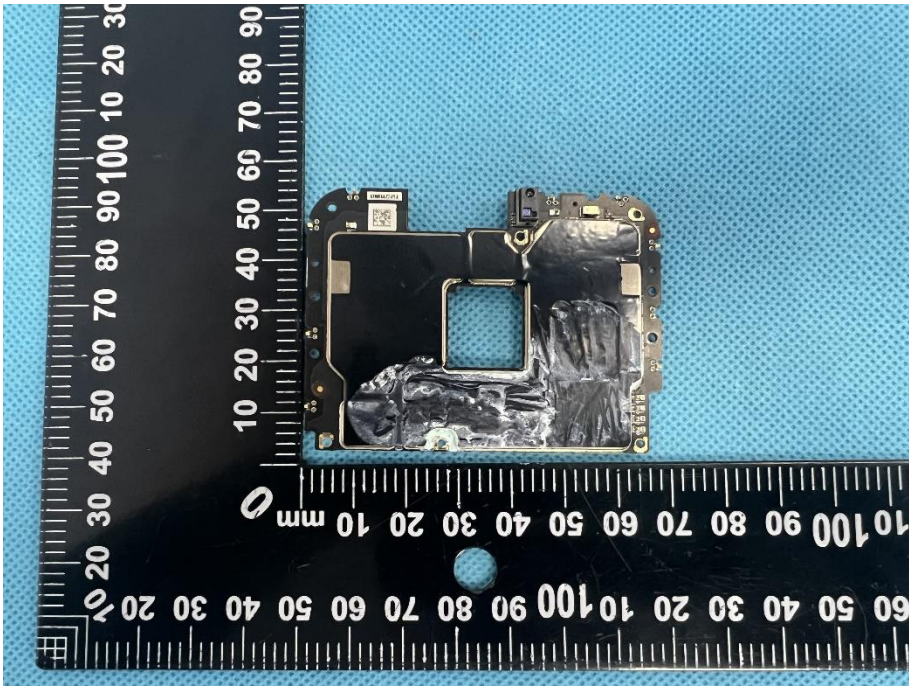
EXHIBIT 3 - EUT INTERNAL PHOTOGRAPHS

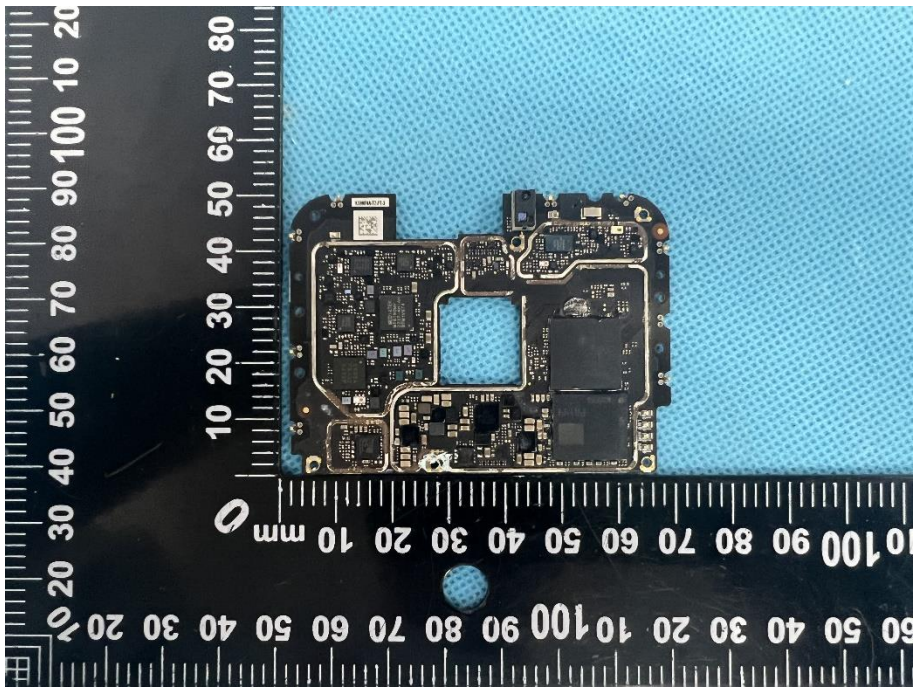
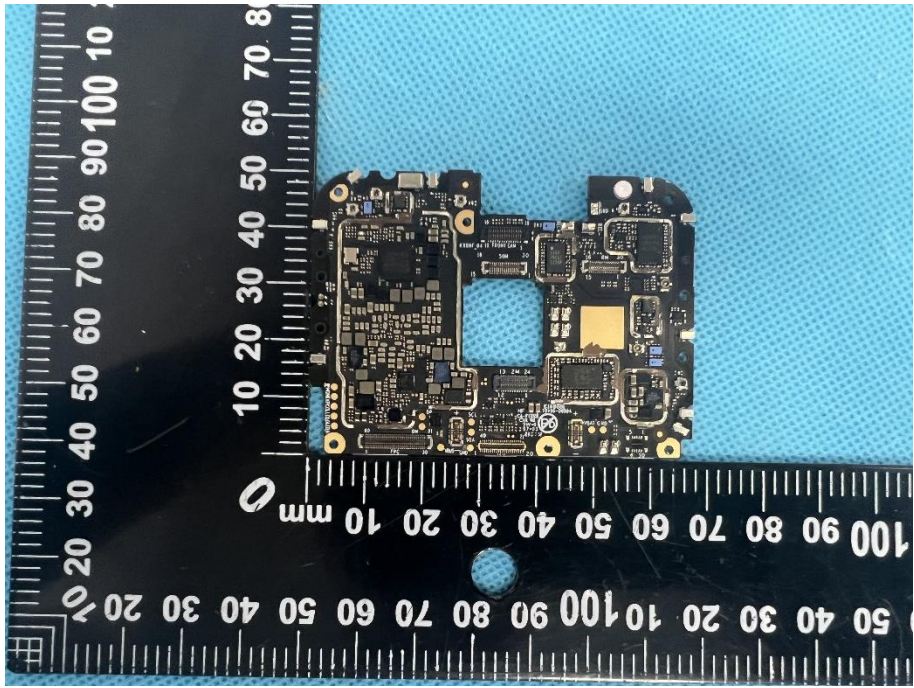
EUT Housing and Board View 1

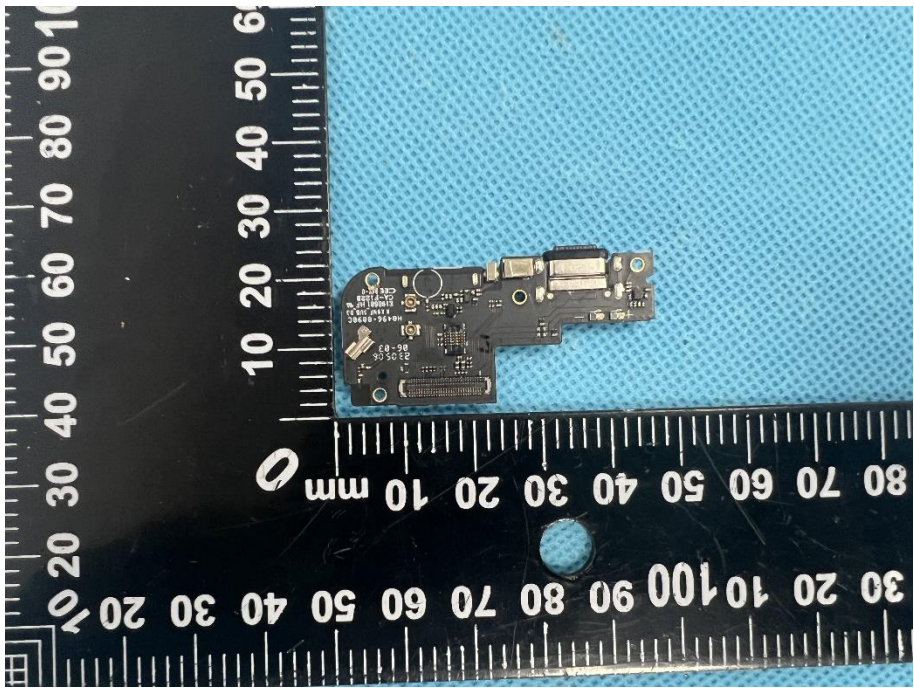
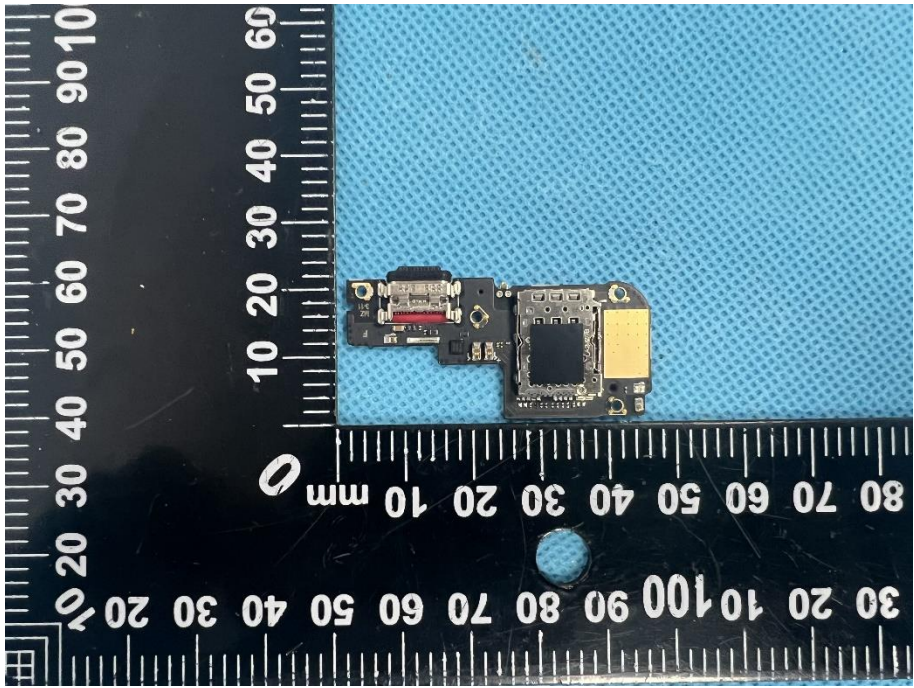


EUT Housing and Board View 2

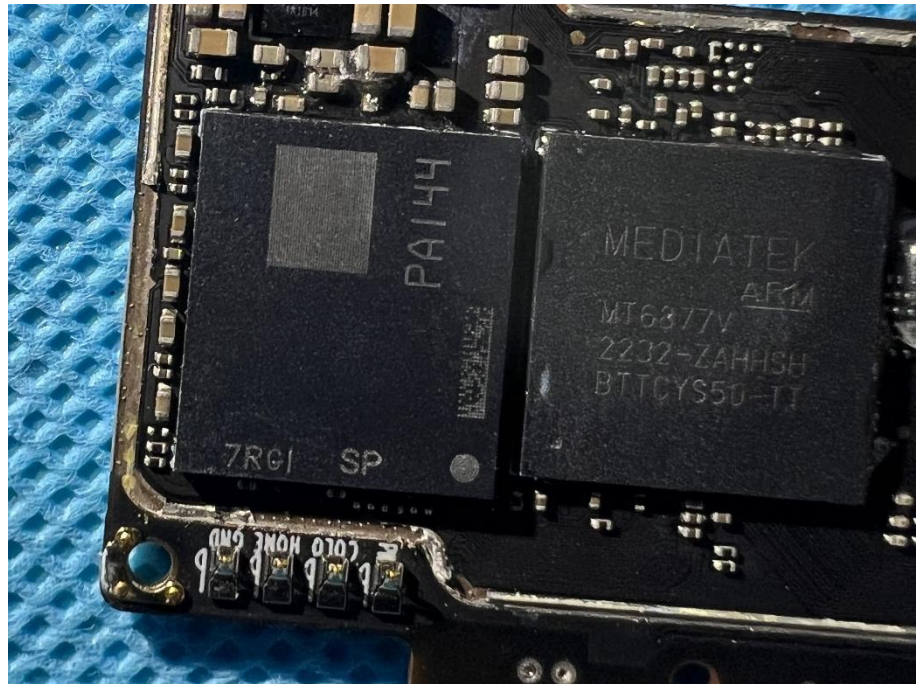


<p>Solder Board-Component View 1</p>	 A photograph showing a solder board component from a top-down perspective. The component is a complex printed circuit board (PCB) with various electronic components, including a camera lens, capacitors, and integrated circuits. It is placed on a blue textured surface. A black ruler with white markings is positioned around the component, showing measurements in millimeters. The ruler is oriented vertically and horizontally, with the 0 mark at the top-left corner of the component's bounding box.
<p>Solder Board-Component View 2</p>	 A photograph showing the same solder board component from a different perspective, likely the reverse side or a side view. The component is placed on the same blue textured surface. A black ruler with white markings is positioned around the component, showing measurements in millimeters. The ruler is oriented vertically and horizontally, with the 0 mark at the top-left corner of the component's bounding box.

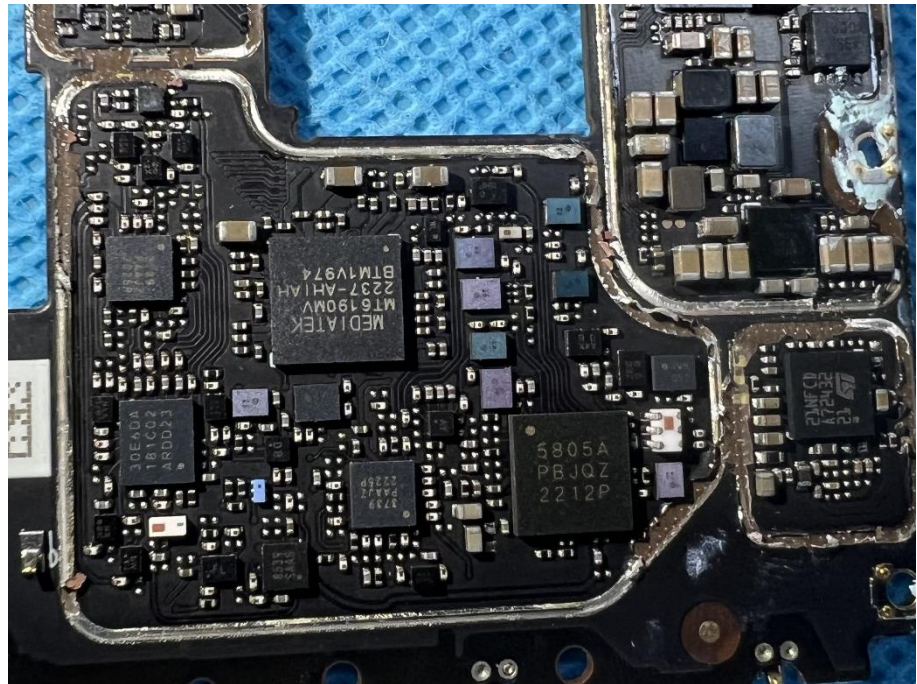
<p>Solder Board-Component View 3</p>	 A photograph of a complex printed circuit board (PCB) assembly, likely a mobile phone motherboard, showing various components like chips, capacitors, and connectors. The board is placed on a blue textured surface. A black ruler with white markings is positioned vertically to the left of the board, showing measurements in millimeters from 0 to 100. The board's overall dimensions are approximately 100mm by 80mm.
<p>Solder Board-Component View 4</p>	 A photograph of the same PCB assembly as in View 3, but from a different perspective. The board is oriented vertically. A black ruler with white markings is positioned vertically to the left of the board, showing measurements in millimeters from 0 to 100. The board's overall dimensions are approximately 100mm by 80mm.

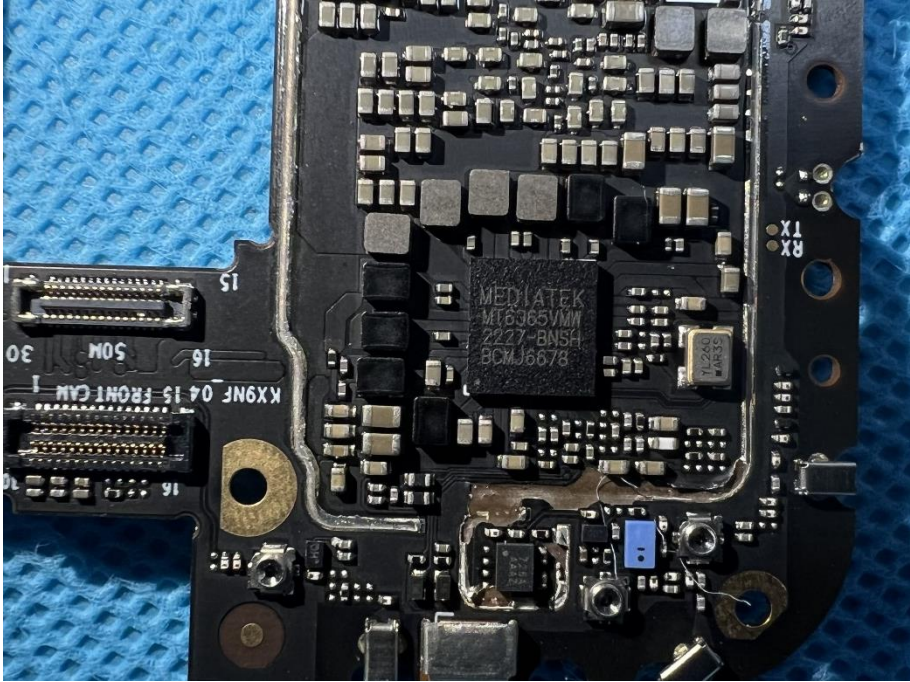
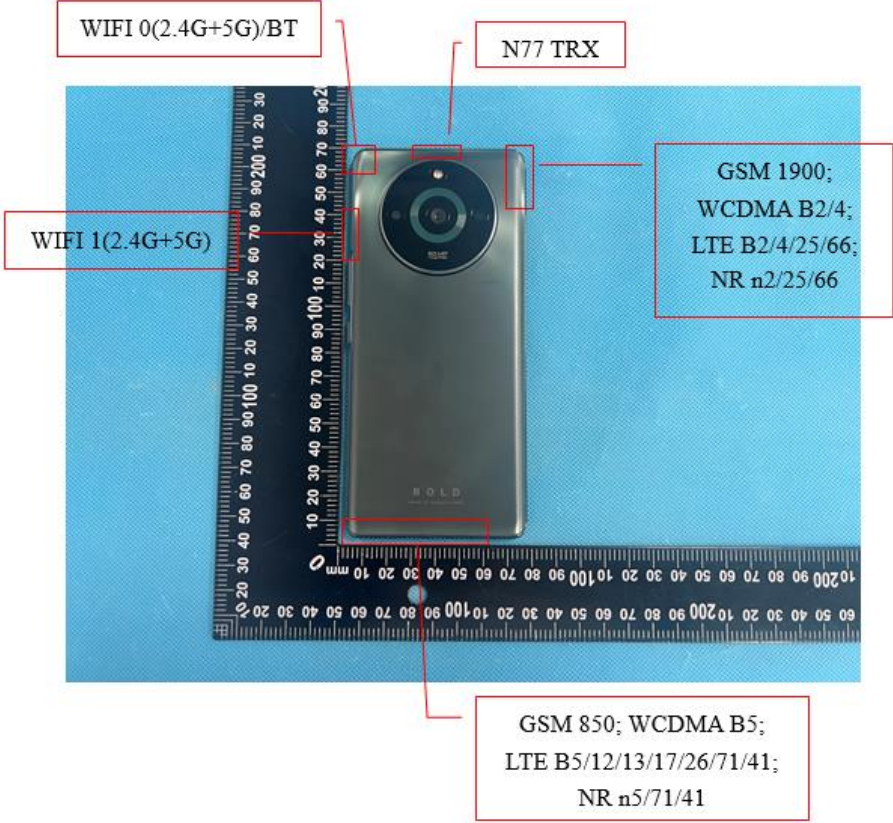
<p>Solder Board-Component View 5</p>	 <p>A photograph of a small, dark-colored printed circuit board (PCB) component, likely a solder mask or a small board, placed on a blue textured surface. The component is positioned next to a black ruler with white markings. The ruler shows measurements in millimeters, with the component's length being approximately 30 mm. The component features several small components, including what appears to be a microchip and some surface-mount components. The text 'H056-0900C' and '06-88' is visible on the board.</p>
<p>Solder Board-Component View 6</p>	 <p>A photograph of the same small, dark-colored PCB component from a different perspective. It is placed on the same blue textured surface next to the same black ruler. The component's width is approximately 20 mm. This view shows a different set of components, including a larger square component and a yellow component. The text 'H056-0900C' and '06-88' is also visible on the board.</p>

**Solder
Board-Component
View 7**



**Solder
Board-Component
View 8**



<p style="text-align: center;">Solder Board-Component View 9</p>	
<p style="text-align: center;">Antenna View 1</p>	 <p>WIFI 0(2.4G+5G)/BT</p> <p>N77 TRX</p> <p>WIFI 1(2.4G+5G)</p> <p>GSM 1900; WCDMA B2/4; LTE B2/4/25/66; NR n2/25/66</p> <p>GSM 850; WCDMA B5; LTE B5/12/13/17/26/71/41; NR n5/71/41</p>

Antenna View 2

