

MEASUREMENT 81

Type: Phone measurement (Complete)
 Date of measurement: 2022-04-29
 Measurement duration: 12 minutes 3 seconds

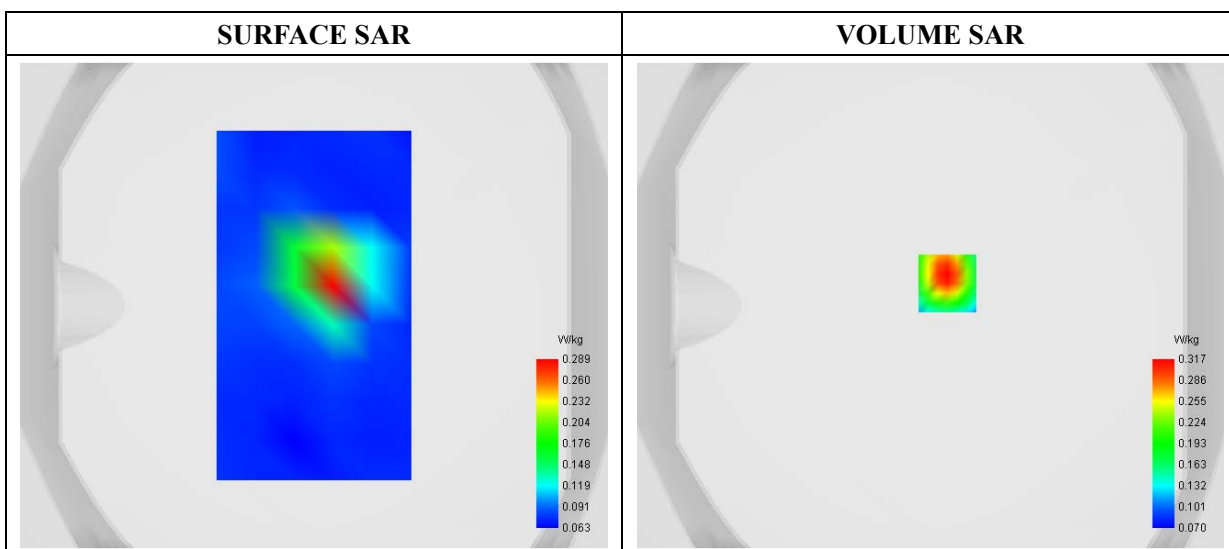
A. Experimental conditions

| | |
|------------------------|-------------------------------|
| Area Scan | sam_direct_droit2_surf8mm.txt |
| Phantom | Flat Plane |
| Device Position | Top |
| Band | WiFi(5.8GHz)_802.11a |
| Channels | High |
| Signal | Duty Cycle: 1:1 |

B. SAR Measurement Results

| | |
|--|-------------|
| Frequency (MHz) | 5825.000000 |
| Relative Permittivity (real part) | 35.381841 |
| Conductivity (S/m) | 5.180854 |
| Power Variation (%) | 1.297151 |
| Ambient Temperature | 21.1 |
| Liquid Temperature | 21.2 |

C. SAR Surface and Volume



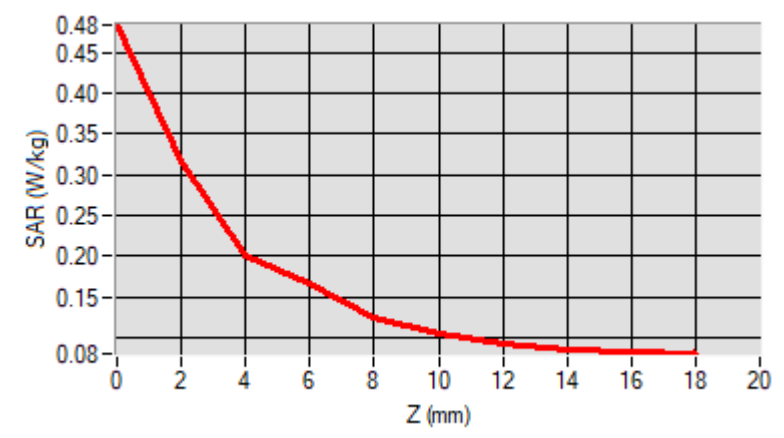
Maximum location: X=7.00, Y=9.00

D. SAR 1g & 10g

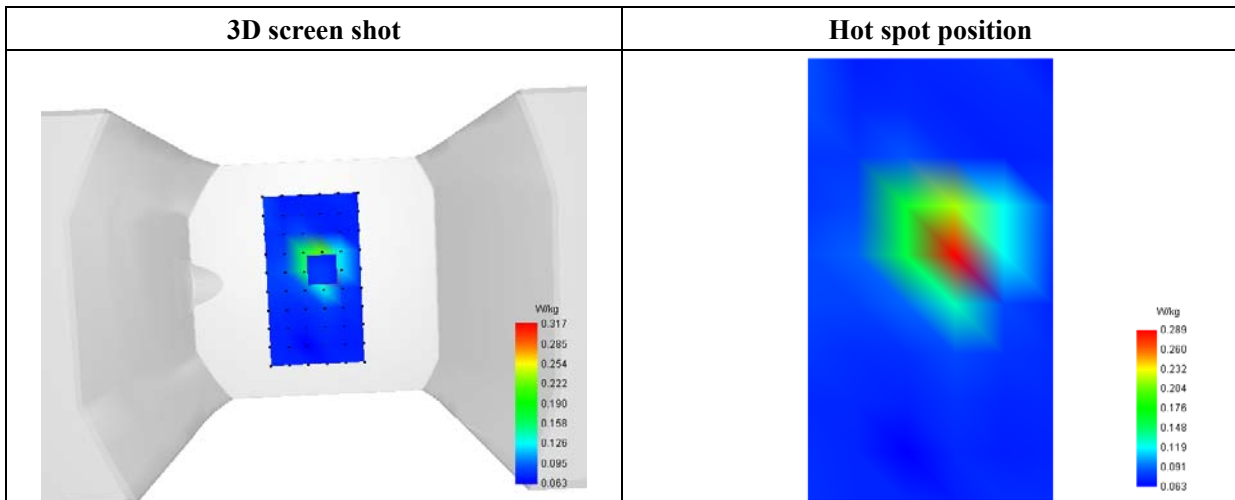
| | |
|----------------|----------|
| SAR 10g (W/Kg) | 0.130078 |
| SAR 1g (W/Kg) | 0.219557 |

E. Z Axis Scan

| Z (mm) | 0.00 | 2.00 | 4.00 | 6.00 | 8.00 | 10.00 | 12.00 | 14.00 | 16.00 |
|------------|--------|--------|--------|--------|--------|--------|--------|--------|--------|
| SAR (W/Kg) | 0.4838 | 0.3172 | 0.2011 | 0.1673 | 0.1245 | 0.1061 | 0.0943 | 0.0855 | 0.0823 |



F. 3D Image



MEASUREMENT 82

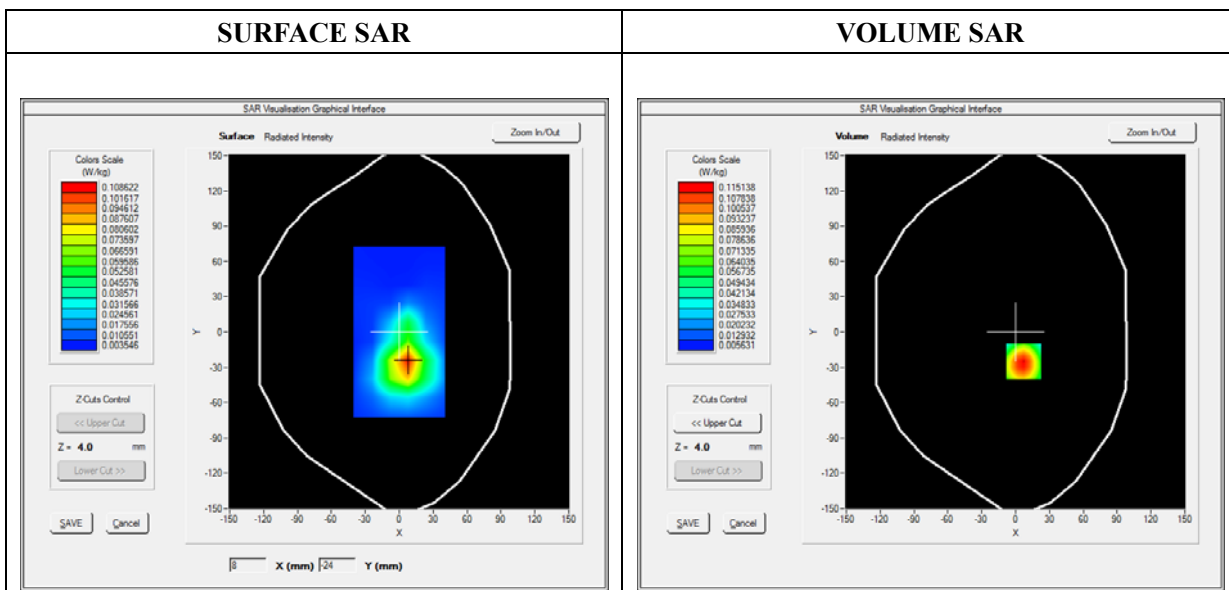
Type: Phone measurement (Complete)
 Date of measurement: 2022-04-19
 Measurement duration: 12 minutes 3 seconds

A. Experimental conditions

| | |
|------------------------|-------------------------------|
| Area Scan | sam_direct_droit2_surf8mm.txt |
| Phantom | Flat Plane |
| Device Position | Top |
| Band | WiFi(2.4GHz)_802.11b |
| Channels | Low |
| Signal | Duty Cycle: 1:1 |

B. SAR Measurement Results

| | |
|--|-------------|
| Frequency (MHz) | 2412.000000 |
| Relative Permittivity (real part) | 38.591835 |
| Conductivity (S/m) | 1.774129 |
| Power Variation (%) | 3.200514 |
| Ambient Temperature | 21.1 |
| Liquid Temperature | 21.2 |



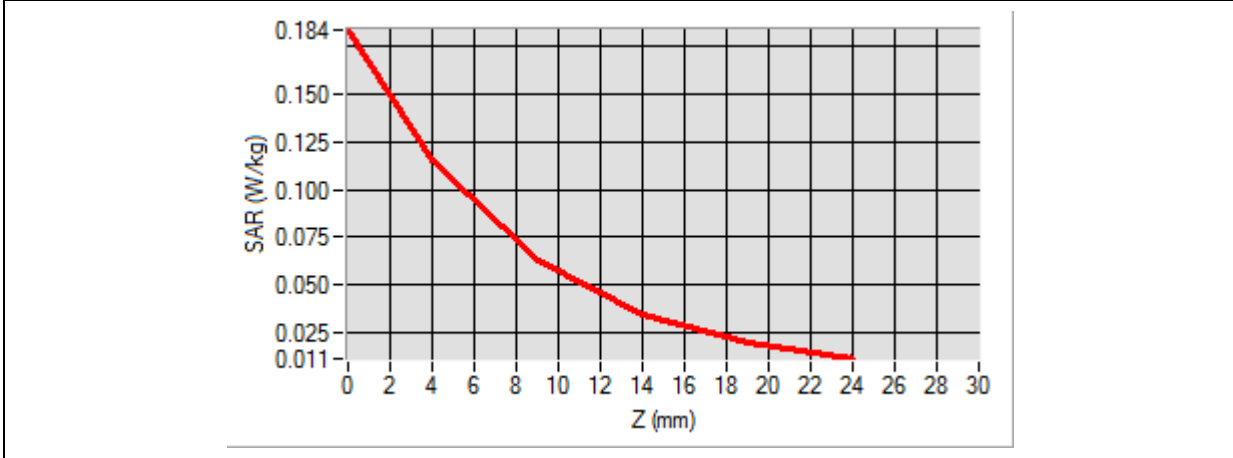
Maximum location: X=7.00, Y=-25.00

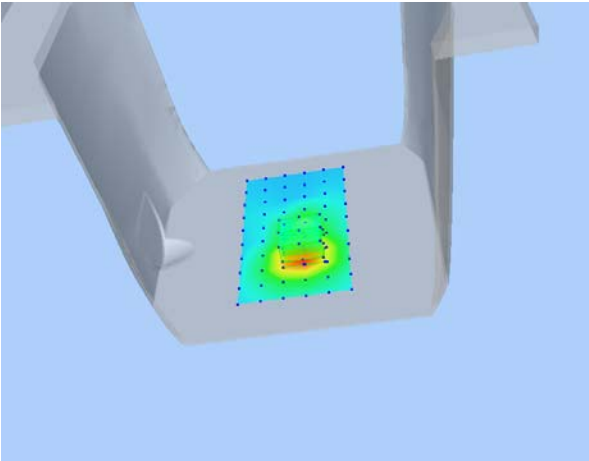
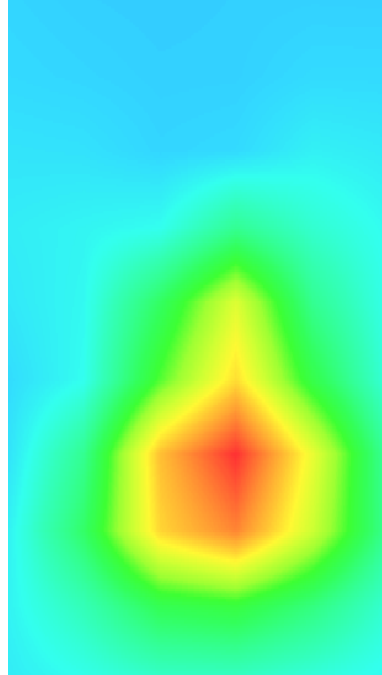
SAR Peak: 0.18 W/kg

| | |
|-----------------------|-----------------|
| SAR 10g (W/Kg) | 0.058147 |
|-----------------------|-----------------|

| | |
|----------------------|-----------------|
| SAR 1g (W/Kg) | 0.107251 |
|----------------------|-----------------|

| | | | | | |
|-------------------|---------------|---------------|---------------|---------------|---------------|
| Z (mm) | 0.00 | 4.00 | 9.00 | 14.00 | 19.00 |
| SAR (W/Kg) | 0.1839 | 0.1151 | 0.0622 | 0.0338 | 0.0194 |



| 3D screen shot | Hot spot position |
|---|--|
|  |  |

MEASUREMENT 83

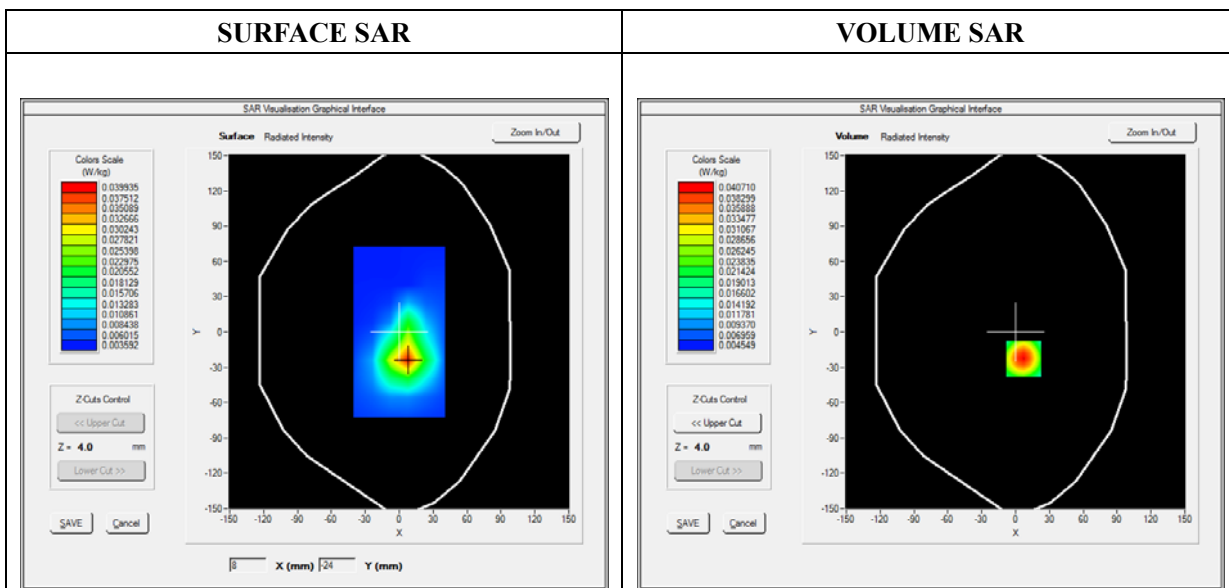
Type: Phone measurement (Complete)
 Date of measurement: 2022-04-19
 Measurement duration: 12 minutes 3 seconds

A. Experimental conditions

| | |
|------------------------|-------------------------------|
| Area Scan | sam_direct_droit2_surf8mm.txt |
| Phantom | Flat Plane |
| Device Position | Top |
| Band | Bluetooth |
| Channels | High |
| Signal | Duty Cycle: 1:1 |

B. SAR Measurement Results

| | |
|--|-------------|
| Frequency (MHz) | 2480.000000 |
| Relative Permittivity (real part) | 38.593881 |
| Conductivity (S/m) | 1.774621 |
| Power Variation (%) | 3.117514 |
| Ambient Temperature | 21.1 |
| Liquid Temperature | 21.2 |

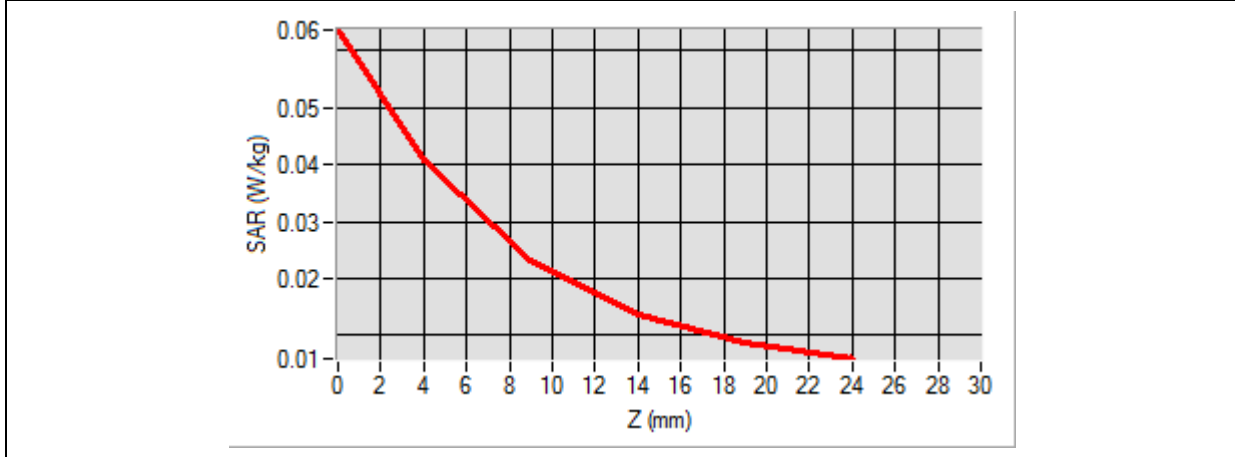


Maximum location: X=7.00, Y=-23.00

SAR Peak: 0.06 W/kg

| | |
|-----------------------|-----------------|
| SAR 10g (W/Kg) | 0.021389 |
| SAR 1g (W/Kg) | 0.037879 |

| | | | | | |
|-------------------|---------------|---------------|---------------|---------------|---------------|
| Z (mm) | 0.00 | 4.00 | 9.00 | 14.00 | 19.00 |
| SAR (W/Kg) | 0.0636 | 0.0407 | 0.0230 | 0.0135 | 0.0087 |



| 3D screen shot | Hot spot position |
|--|--|
| <p>A 3D perspective view of a grey device with a grid of blue dots on its top surface. A color-coded SAR hot spot is visible, with red and yellow indicating the highest SAR values, transitioning to green and cyan as the values decrease.</p> | <p>A 2D heatmap showing the SAR distribution. The central area is red, indicating the highest SAR, surrounded by yellow and green, with the outer edges being cyan. The shape is roughly teardrop-like, matching the hot spot on the 3D model.</p> |

MEASUREMENT 84

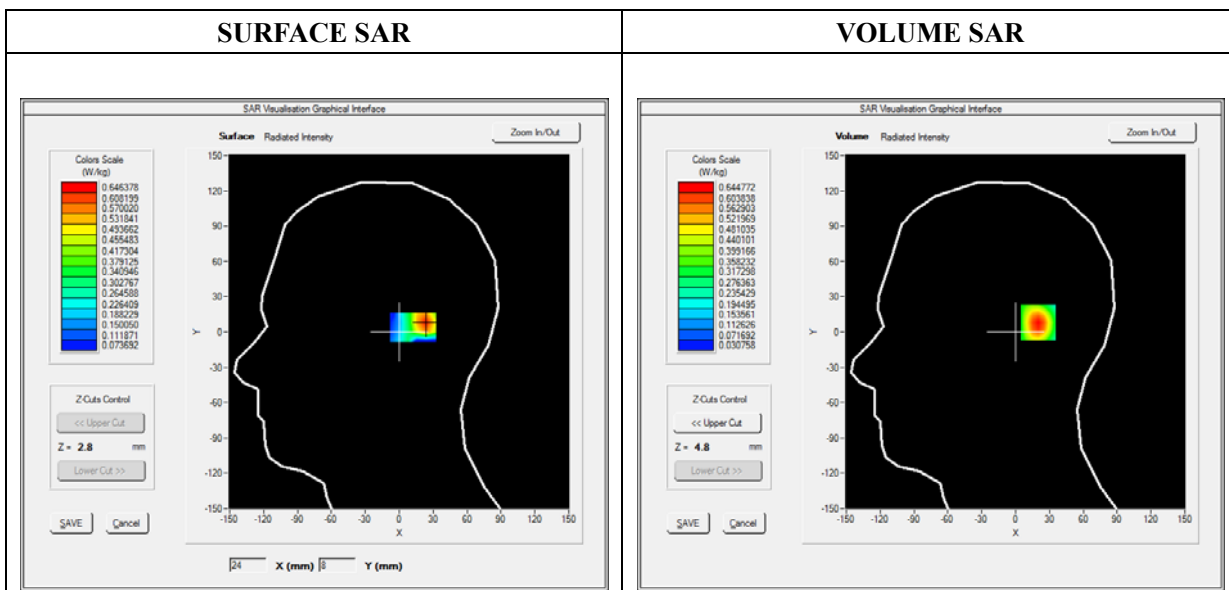
Type: Phone measurement (Complete)
 Date of measurement: 2022-04-21
 Measurement duration: 12 minutes 3 seconds

A. Experimental conditions

| | |
|------------------------|-----------------------------------|
| Area Scan | sam_direct_droit2_surf8mm.txt |
| Phantom | Right head |
| Device Position | Cheek |
| Band | EN-DC_n41A |
| Channels | DFT-s-DFT-QPSK, 100MHz, 1RB, High |
| Signal | Duty Cycle 1:1 |

B. SAR Measurement Results

| | |
|--|-------------|
| Frequency (MHz) | 2640.000000 |
| Relative Permittivity (real part) | 39.654295 |
| Conductivity (S/m) | 1.933565 |
| Power Variation (%) | -0.459361 |
| Ambient Temperature | 21.1 |
| Liquid Temperature | 21.2 |



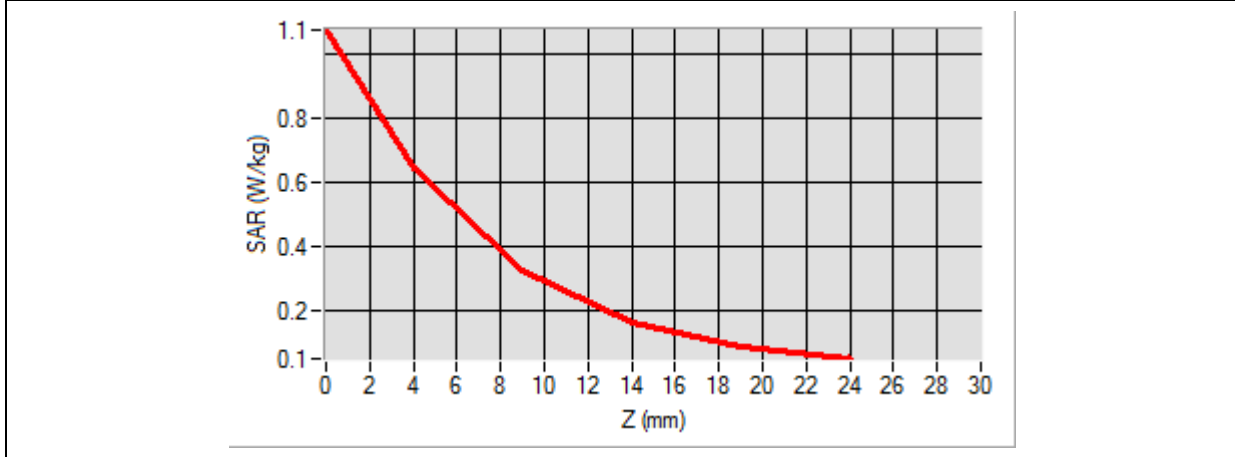
Maximum location: X=24.00, Y=8.00

SAR Peak: 1.08 W/kg

| | |
|-----------------------|-----------------|
| SAR 10g (W/Kg) | 0.113843 |
|-----------------------|-----------------|

| | |
|----------------------|-----------------|
| SAR 1g (W/Kg) | 0.296349 |
|----------------------|-----------------|

| | | | | | |
|-------------------|---------------|---------------|---------------|---------------|---------------|
| Z (mm) | 0.00 | 4.00 | 9.00 | 14.00 | 19.00 |
| SAR (W/Kg) | 1.0779 | 0.6448 | 0.3259 | 0.1661 | 0.0920 |



| 3D screen shot | Hot spot position |
|----------------|-------------------|
| | |

MEASUREMENT 85/86

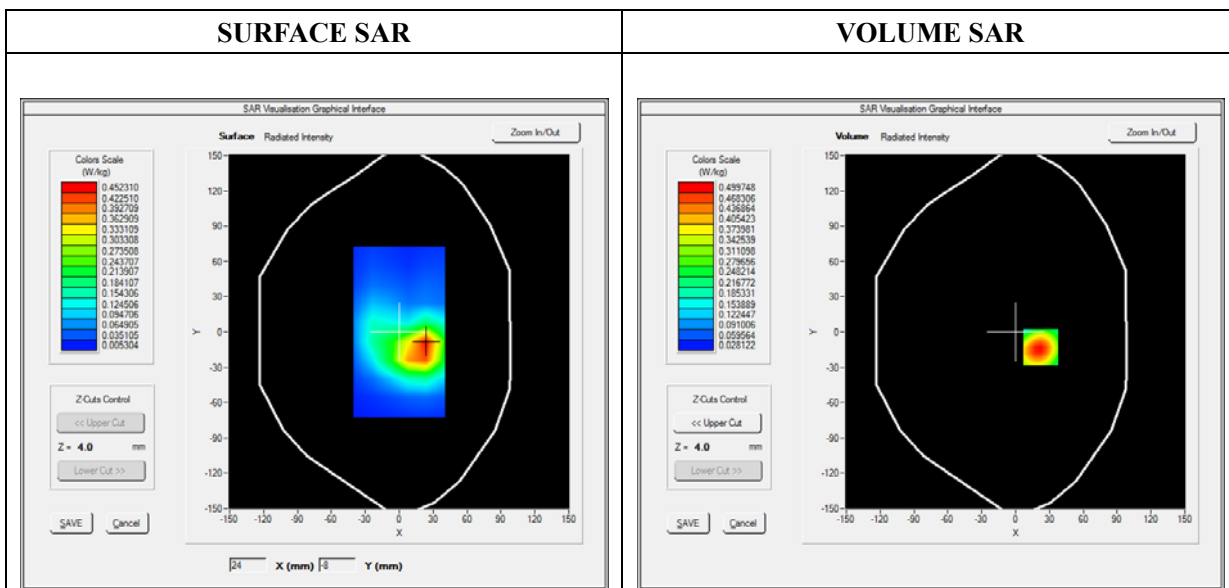
Type: Phone measurement (Complete)
 Date of measurement: 2022-04-21
 Measurement duration: 12 minutes 3 seconds

A. Experimental conditions

| | |
|------------------------|----------------------------------|
| Area Scan | sam_direct_droit2_surf8mm.txt |
| Phantom | Flat Plane |
| Device Position | Back |
| Band | EN-DC_n41A |
| Channels | DFT-s-DFT-QPSK, 100MHz, 1RB,High |
| Signal | Duty Cycle 1:1 |

B. SAR Measurement Results

| | |
|--|-------------|
| Frequency (MHz) | 2640.000000 |
| Relative Permittivity (real part) | 39.654295 |
| Conductivity (S/m) | 1.933565 |
| Power Variation (%) | 1.589412 |
| Ambient Temperature | 21.1 |
| Liquid Temperature | 21.2 |



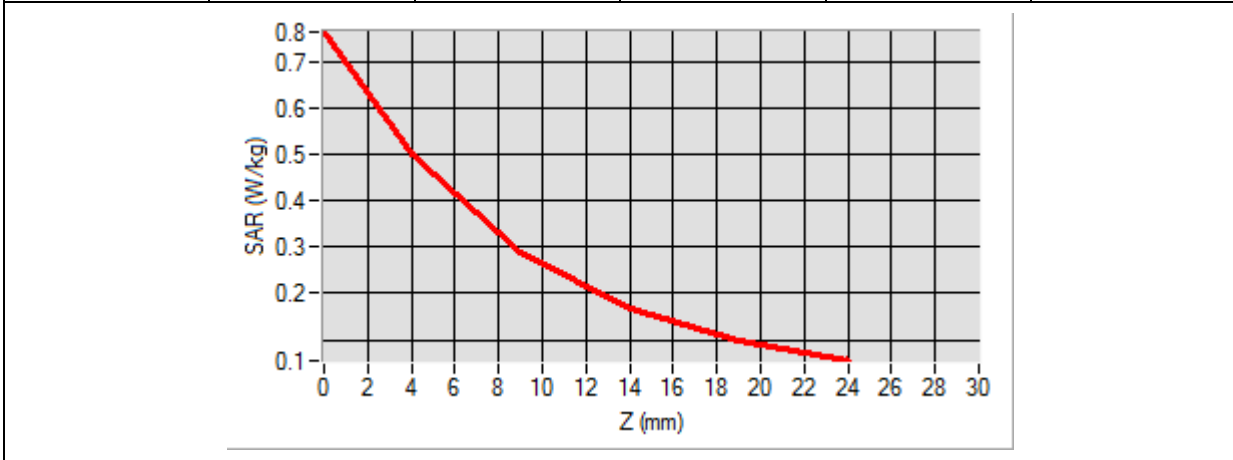
Maximum location: X=22.00, Y=-13.00

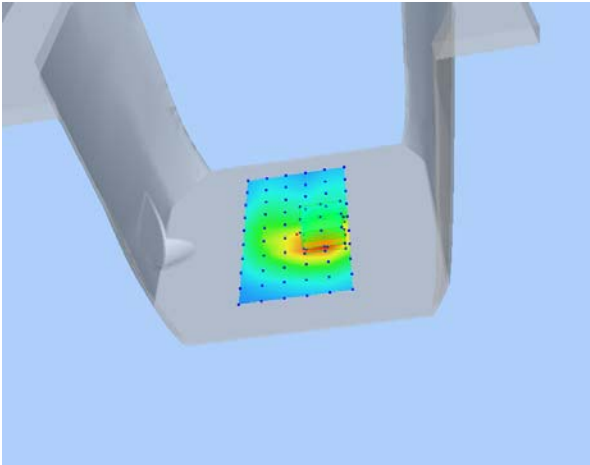
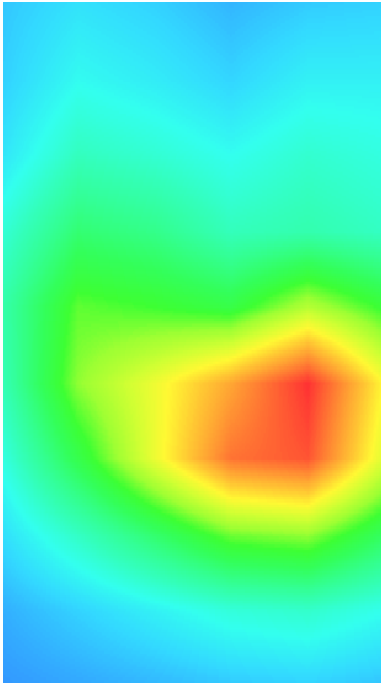
SAR Peak: 0.77 W/kg

| | |
|-----------------------|-----------------|
| SAR 10g (W/Kg) | 0.262104 |
|-----------------------|-----------------|

| | |
|----------------------|-----------------|
| SAR 1g (W/Kg) | 0.367006 |
|----------------------|-----------------|

| | | | | | |
|-------------------|---------------|---------------|---------------|---------------|---------------|
| Z (mm) | 0.00 | 4.00 | 9.00 | 14.00 | 19.00 |
| SAR (W/Kg) | 0.7626 | 0.4997 | 0.2876 | 0.1653 | 0.0974 |



| | |
|---|--|
| 3D screen shot | Hot spot position |
|  |  |

MEASUREMENT 87

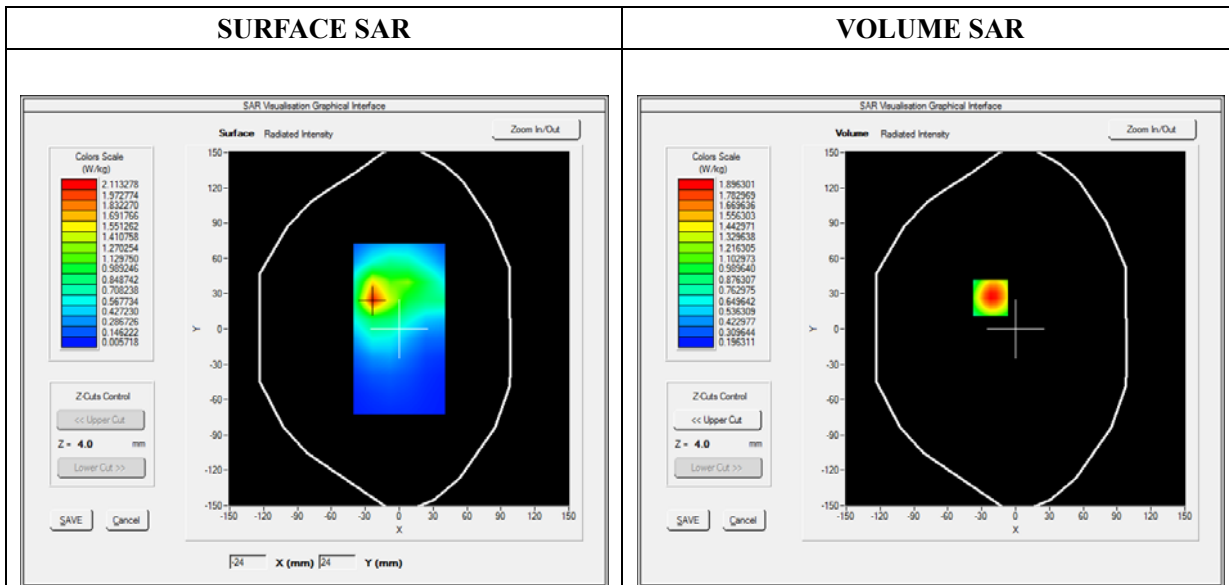
Type: Phone measurement (Complete)
 Date of measurement: 2022-06-17
 Measurement duration: 11 minutes 48 seconds

A. Experimental conditions

| | |
|------------------------|-------------------------------|
| Area Scan | sam_direct_droit2_surf8mm.txt |
| Phantom | Flat Plane |
| Device Position | Bottom |
| Band | GPRS1900_4TX |
| Channels | Low |
| Signal | Duty Cycle: 1:2 |

B. SAR Measurement Results

| | |
|--|-------------|
| Frequency (MHz) | 1850.200000 |
| Relative Permittivity (real part) | 53.580298 |
| Conductivity (S/m) | 1.531223 |
| Power Variation (%) | 1.088611 |
| Ambient Temperature | 21.5 |
| Liquid Temperature | 21.5 |

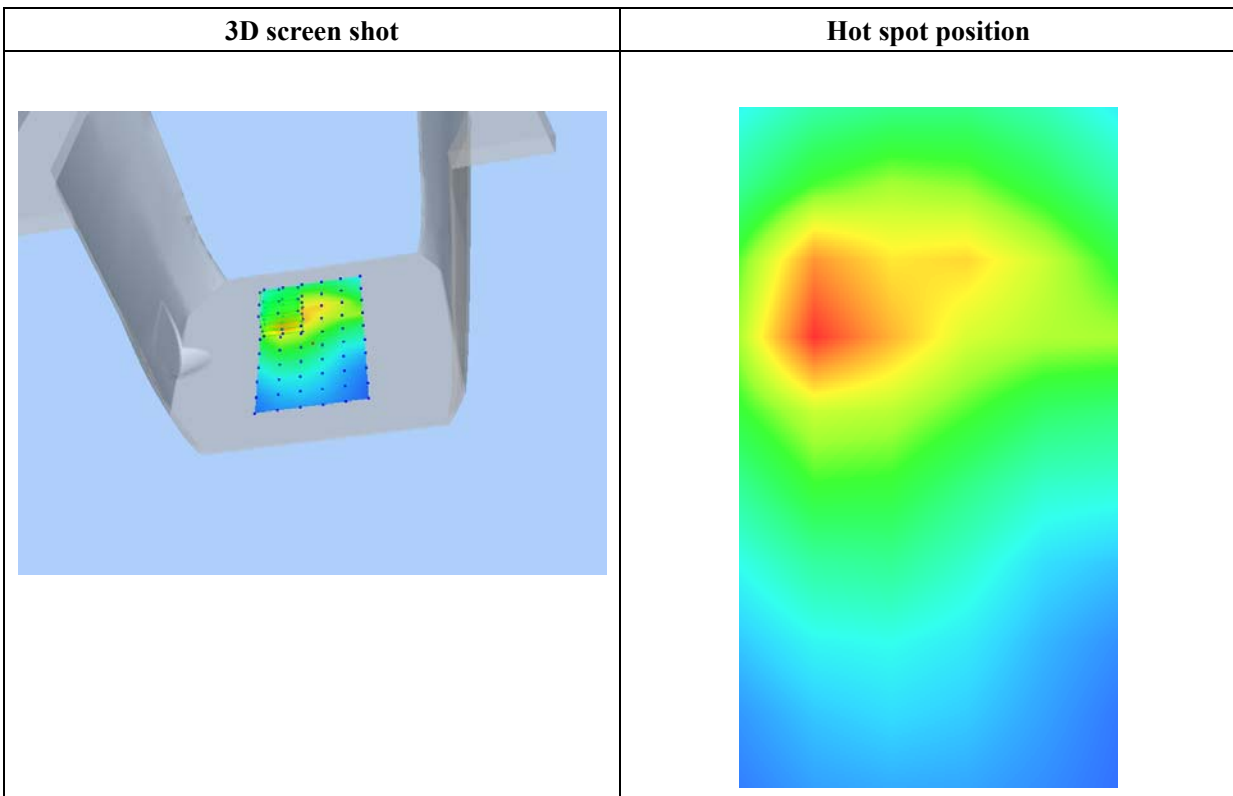
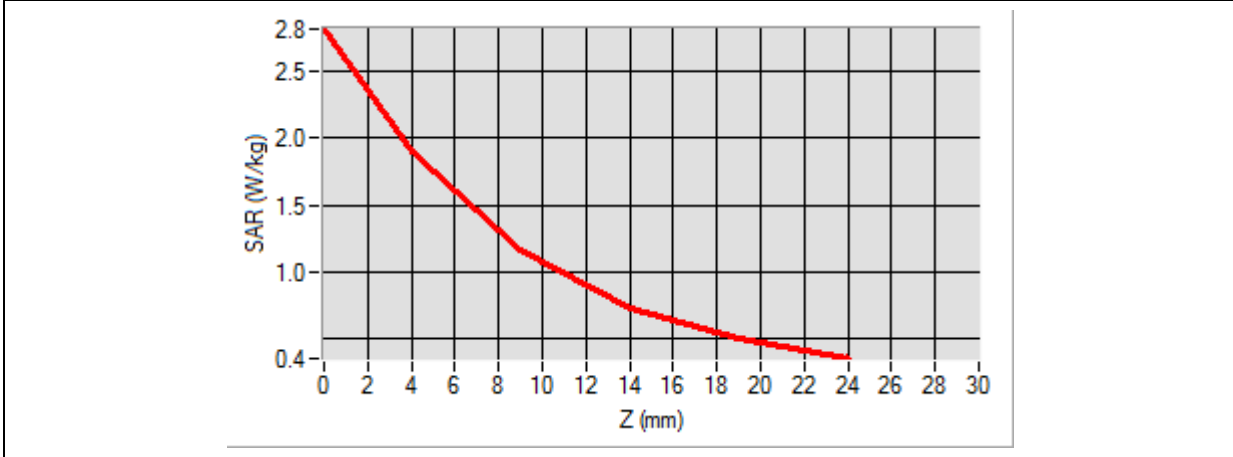


Maximum location: X=-22.00, Y=26.00

SAR Peak: 2.84 W/kg

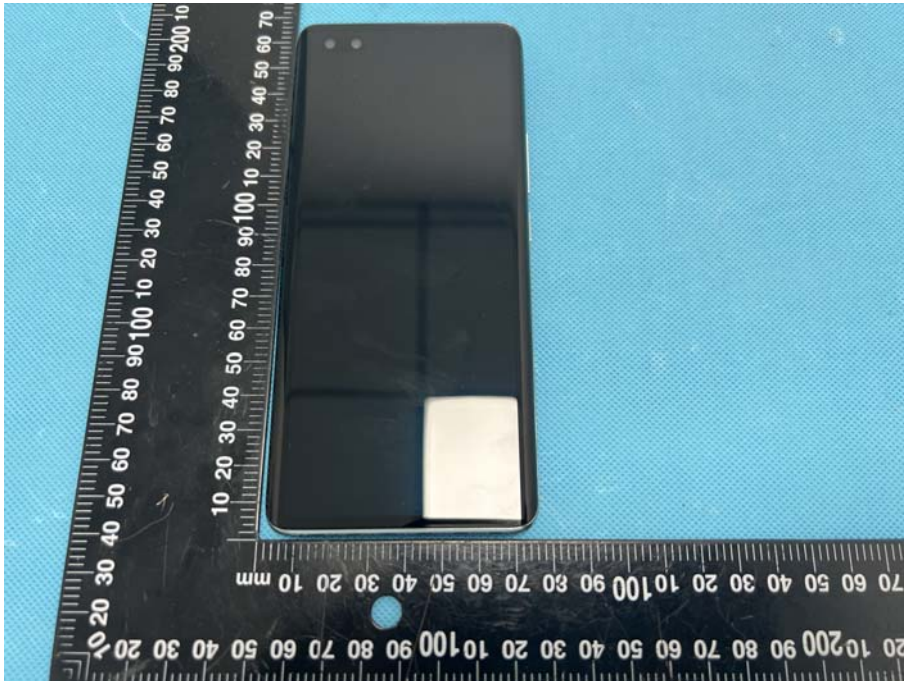
| | |
|-----------------------|-----------------|
| SAR 10g (W/Kg) | 1.080687 |
| SAR 1g (W/Kg) | 1.792197 |

| | | | | | |
|-------------------|---------------|---------------|---------------|---------------|---------------|
| Z (mm) | 0.00 | 4.00 | 9.00 | 14.00 | 19.00 |
| SAR (W/Kg) | 2.8134 | 1.8963 | 1.1558 | 0.7321 | 0.4998 |



Annex C. EUT Photos

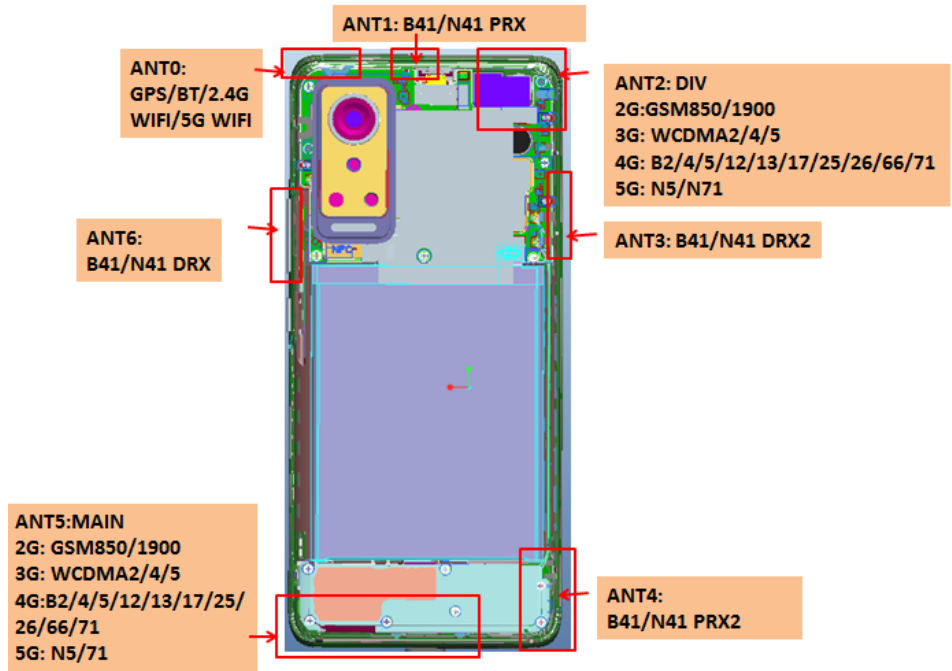
EUT View Front



EUT View Back



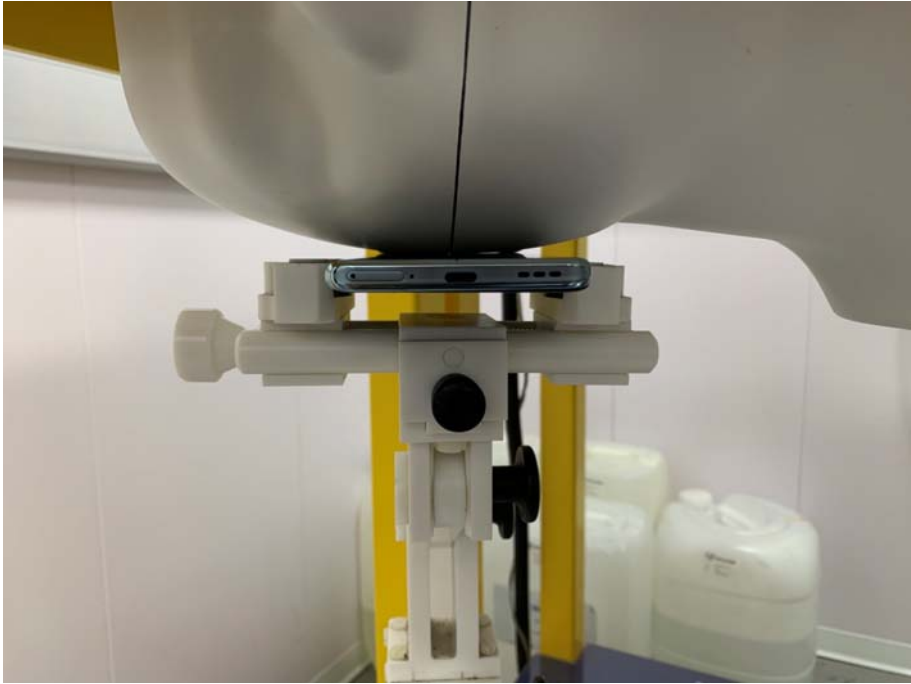
Antenna View



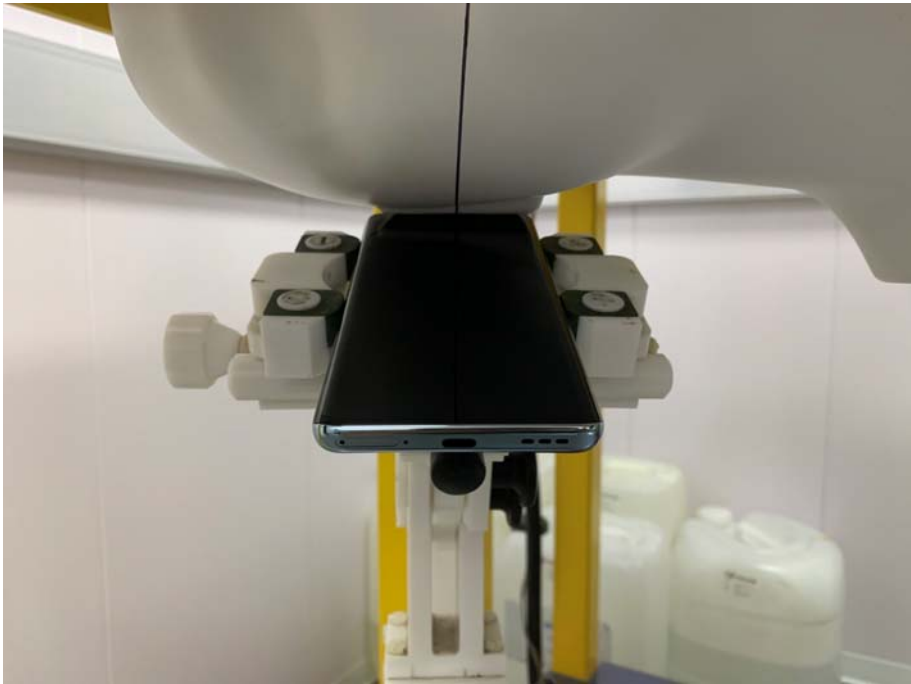
Annex D. Test Setup Photos

Head Exposure Conditions

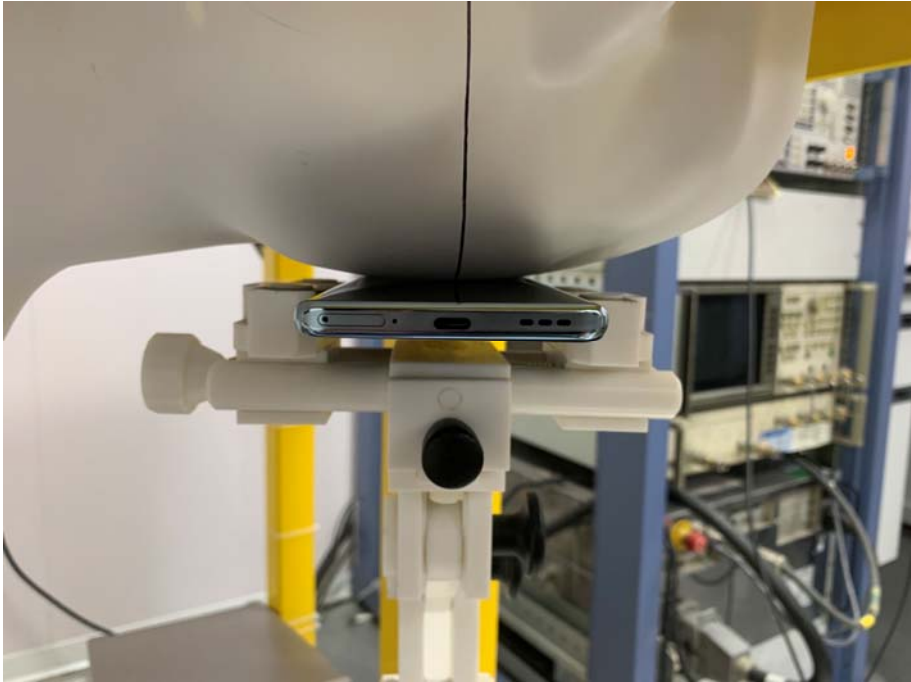
Right Cheek



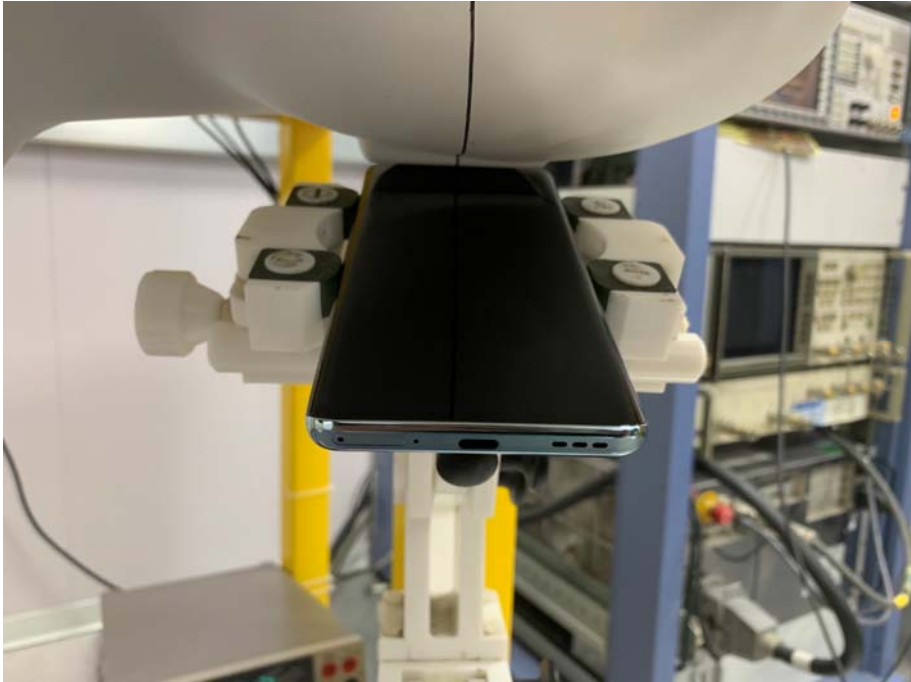
Right Tilt



Left Cheek

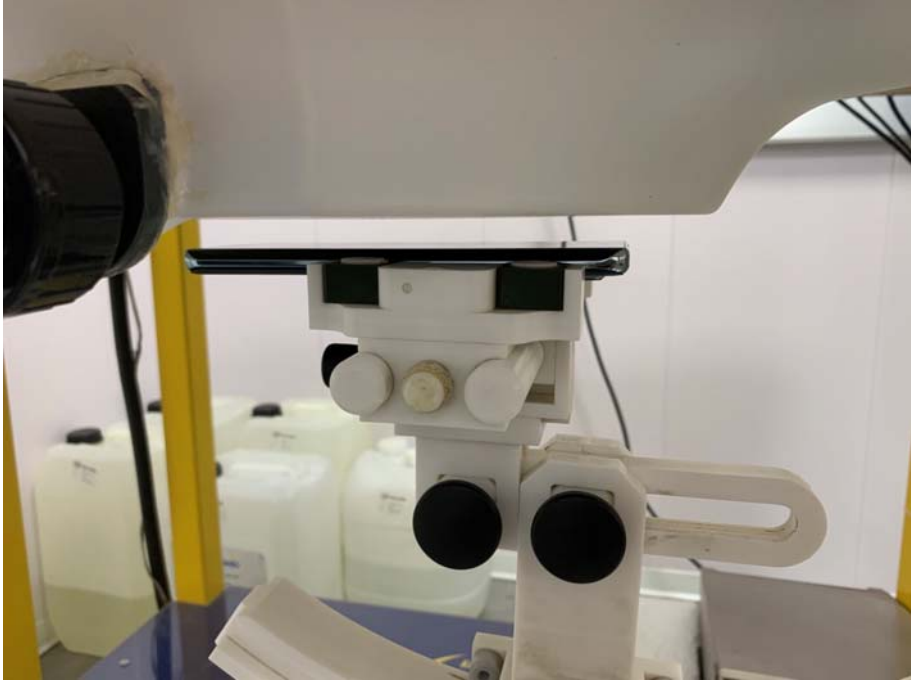


Left Tilt



Body mode Exposure Conditions
Test distance: 10mm

Body Front



Body Back



Body Right



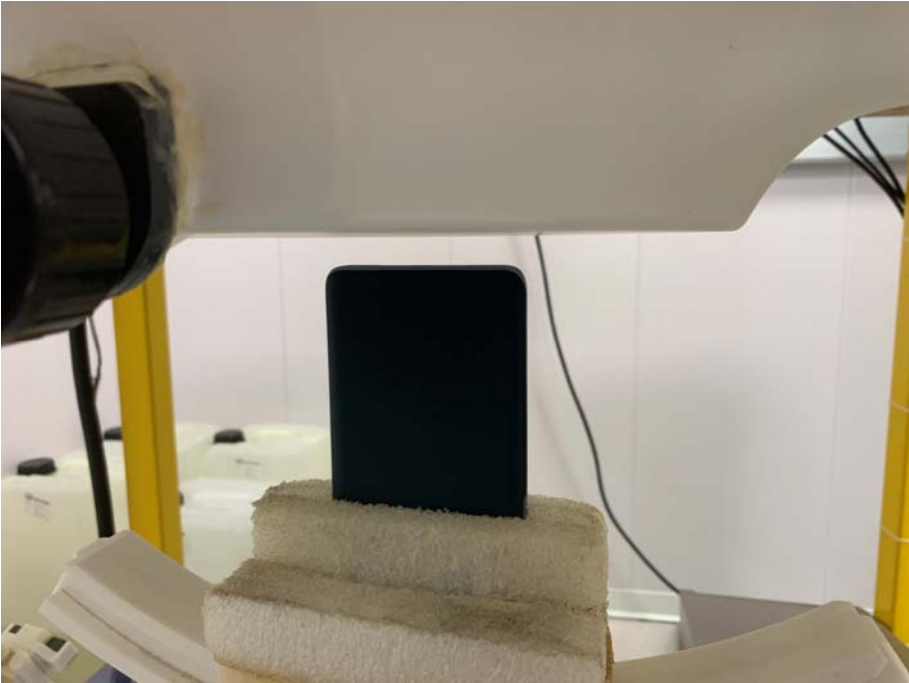
Body Left



Body Top

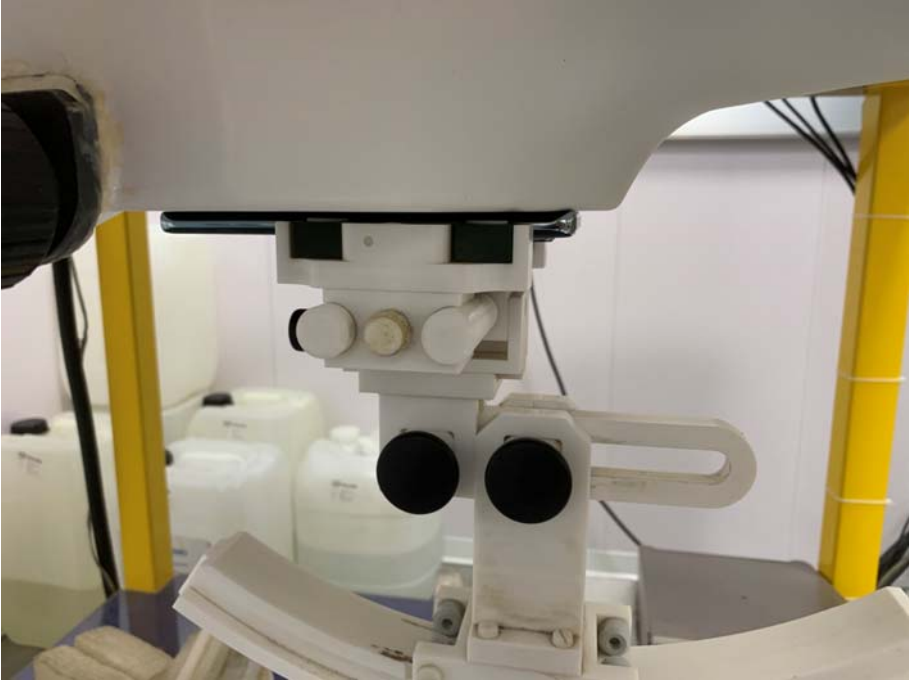


Body Bottom

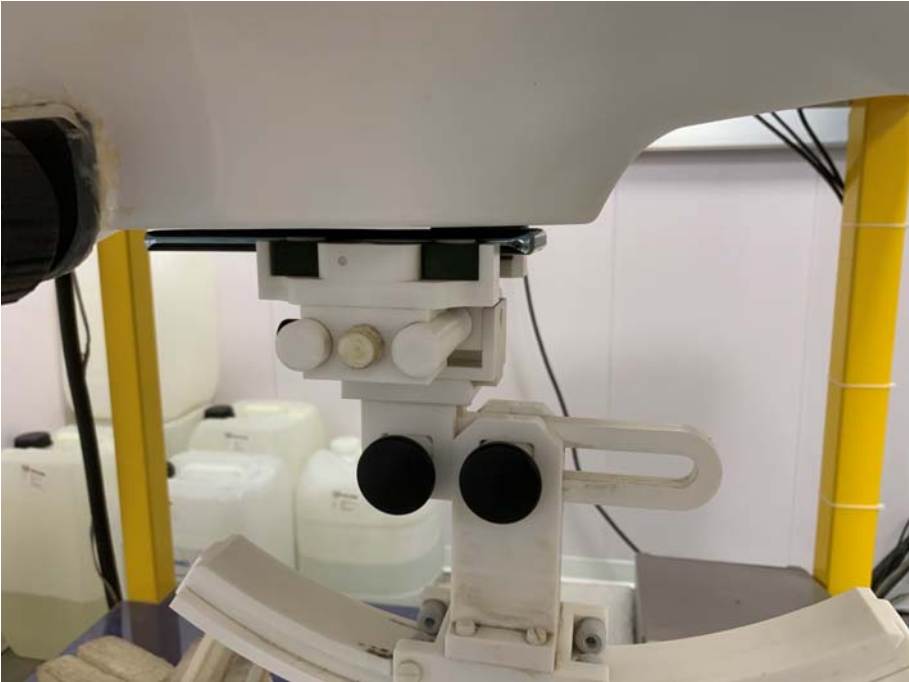


Body mode Exposure Conditions
Test distance: 0mm

Body Front



Body Back



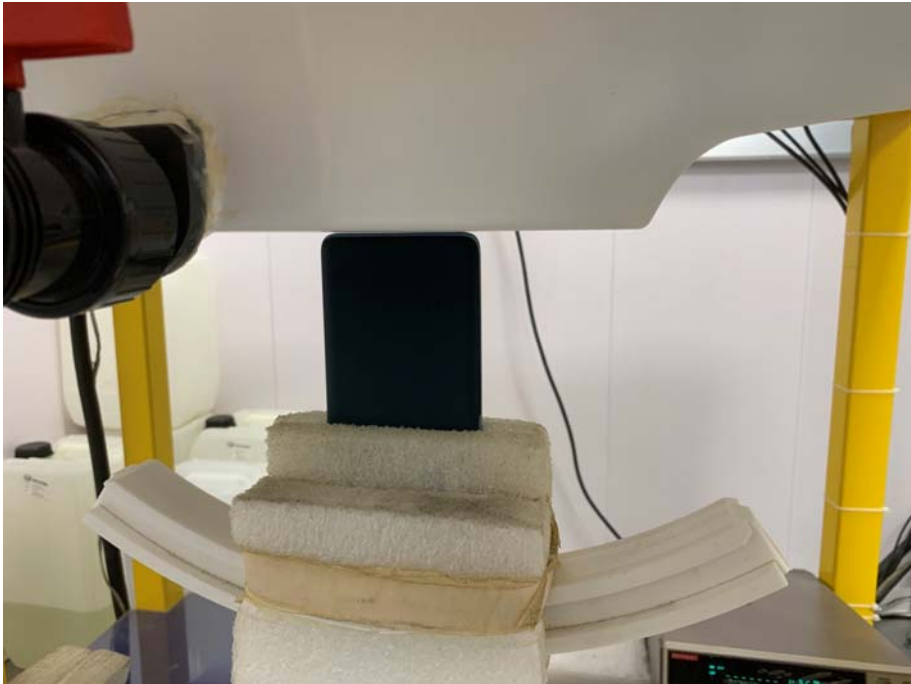
Body Right



Body Left



Body Bottom



Annex E. Calibration Certificate

Please refer to the exhibit for the calibration certificate

******* END OF REPORT *******