

Test Plot 1#: GSM 850_Head Left Cheek_Middle Channel

DUT: Mobile phone; Type: KSHR; Serial: 17021300121

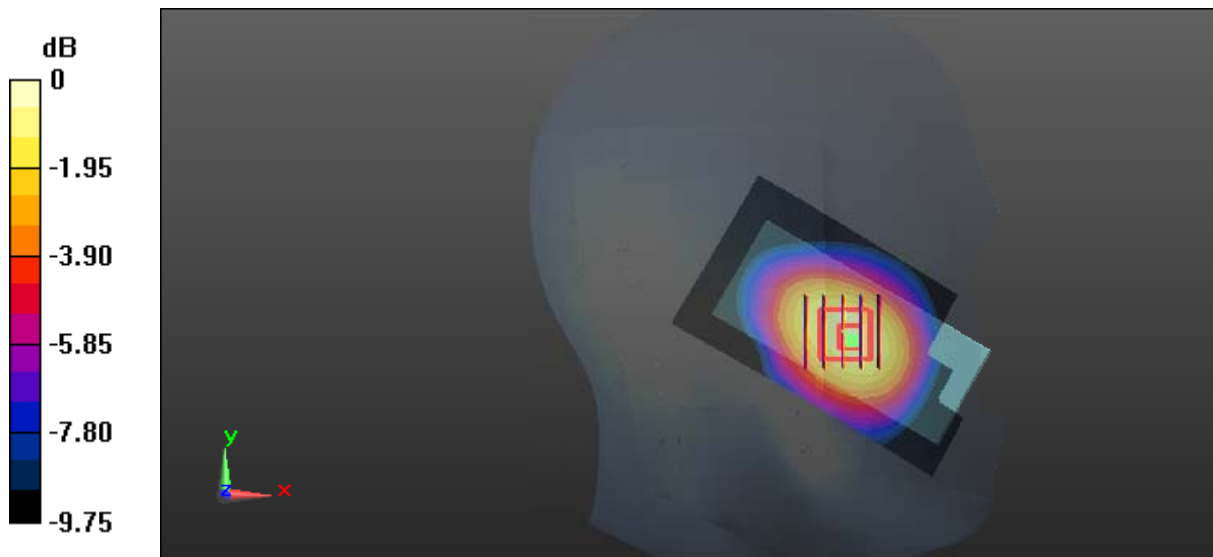
Communication System:GSM; Frequency: 836.6 MHz;Duty Cycle: 1:8
 Medium parameters used: 836.6 MHz; $\sigma = 0.925$ S/m; $\epsilon_r = 40.792$; $\rho = 1000$ kg/m³ ;
 Phantom section: Left Section

DASY5 Configuration:

- Probe: EX3DV4 - SN7431; ConvF(9.84, 9.84, 9.84); Calibrated: 2016/10/4;
- Sensor-Surface: 1.4mm (Mechanical Surface Detection)
- Electronics: DAE3 Sn379; Calibrated: 2016/10/4
- Phantom: SAM1; Type: QD000P40CC; Serial: TP:1412
- Measurement SW: DASY52, Version 52.8 (8);

Area Scan (51x91x1): Interpolated grid: dx=1.500 mm, dy=1.500 mm
 Maximum value of SAR (interpolated) = 0.634 W/kg

Zoom Scan (5x5x7)/Cube 0: Measurement grid: dx=8mm, dy=8mm, dz=5mm
 Reference Value = 9.750 V/m; Power Drift = -0.07 dB
 Peak SAR (extrapolated) = 0.796 W/kg
SAR(1 g) = 0.595 W/kg; SAR(10 g) = 0.417 W/kg
 Maximum value of SAR (measured) = 0.720 W/kg



0 dB = 0.720 W/kg = -1.43 dBW/kg

Test Plot 2#: GSM 850_Head Left Tilt_Middle Channel**DUT: Mobile phone; Type: KSHR; Serial: 17021300121**

Communication System: GSM; Frequency: 836.6 MHz; Duty Cycle: 1:8
Medium parameters used: 836.6 MHz; $\sigma = 0.925$ S/m; $\epsilon_r = 40.792$; $\rho = 1000$ kg/m³ ;
Phantom section: Left Section

DASY5 Configuration:

- Probe: EX3DV4 - SN7431; ConvF(9.84, 9.84, 9.84); Calibrated: 2016/10/4;
- Sensor-Surface: 1.4mm (Mechanical Surface Detection)
- Electronics: DAE3 Sn379; Calibrated: 2016/10/4
- Phantom: SAM1; Type: QD000P40CC; Serial: TP:1412
- Measurement SW: DASY52, Version 52.8 (8);

Area Scan (51x91x1): Interpolated grid: dx=1.500 mm, dy=1.500 mm

Maximum value of SAR (interpolated) = 0.405 W/kg

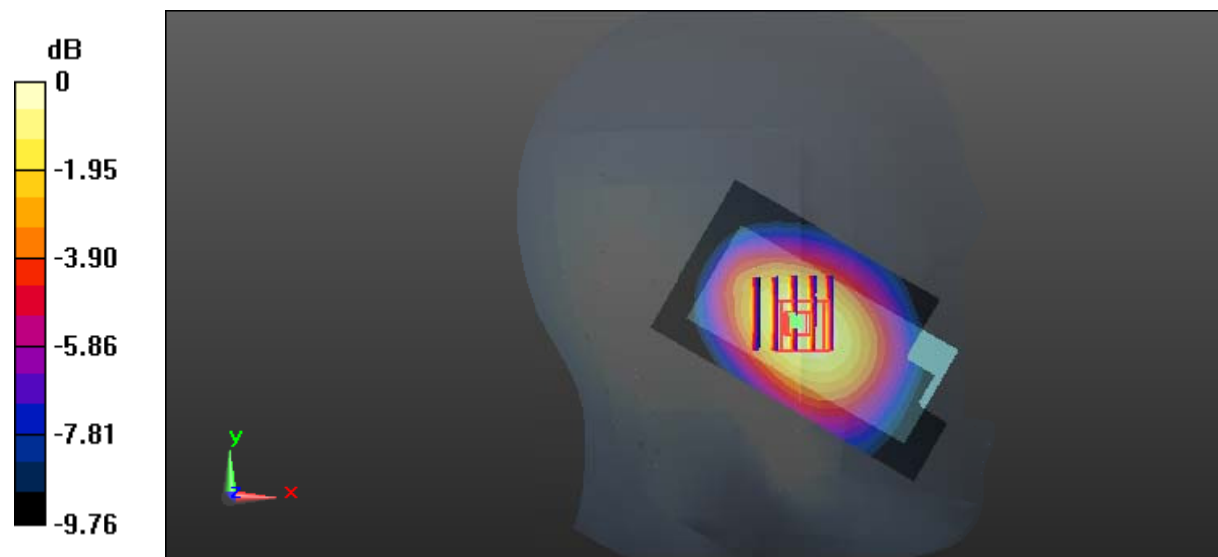
Zoom Scan (5x5x7)/Cube 0: Measurement grid: dx=8mm, dy=8mm, dz=5mm

Reference Value = 11.34 V/m; Power Drift = -0.04 dB

Peak SAR (extrapolated) = 0.499 W/kg

SAR(1 g) = 0.381 W/kg; SAR(10 g) = 0.277 W/kg

Maximum value of SAR (measured) = 0.456 W/kg



0 dB = 0.456 W/kg = -3.41 dBW/kg

Test Plot 3#: GSM 850_Head Right Cheek_Middle Channel

DUT: Mobile phone; Type: KSHR; Serial: 17021300121

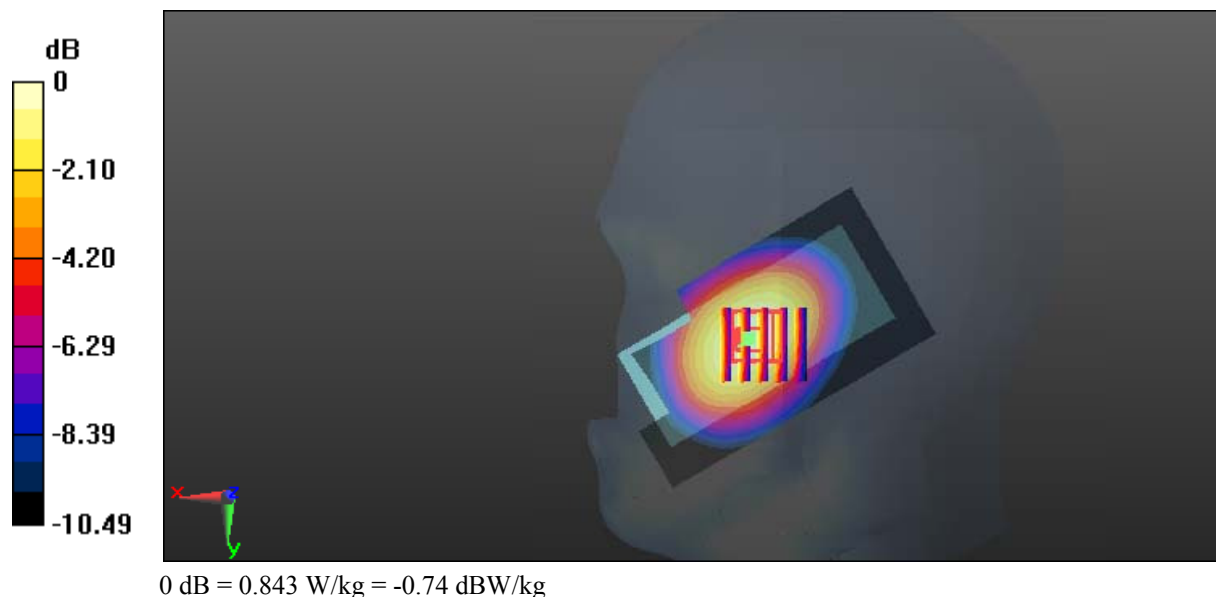
Communication System:GSM; Frequency: 836.6 MHz;Duty Cycle: 1:8
 Medium parameters used: 836.6 MHz; $\sigma = 0.925$ S/m; $\epsilon_r = 40.792$; $\rho = 1000$ kg/m³ ;
 Phantom section: Right Section

DASY5 Configuration:

- Probe: EX3DV4 - SN7431; ConvF(9.84, 9.84, 9.84); Calibrated: 2016/10/4;
- Sensor-Surface: 1.4mm (Mechanical Surface Detection)
- Electronics: DAE3 Sn379; Calibrated: 2016/10/4
- Phantom: SAM1; Type: QD000P40CC; Serial: TP:1412
- Measurement SW: DASY52, Version 52.8 (8);

Area Scan (51x91x1): Interpolated grid: dx=1.500 mm, dy=1.500 mm
 Maximum value of SAR (interpolated) = 0.807 W/kg

Zoom Scan (5x5x7)/Cube 0: Measurement grid: dx=8mm, dy=8mm, dz=5mm
 Reference Value = 8.275 V/m; Power Drift = -0.04 dB
 Peak SAR (extrapolated) = 0.918 W/kg
SAR(1 g) = 0.700 W/kg; SAR(10 g) = 0.498 W/kg
 Maximum value of SAR (measured) = 0.843 W/kg



Test Plot 4#: GSM 850_Head Right Tilt_Middle Channel

DUT: Mobile phone; Type: KSHR; Serial: 17021300121

Communication System:GSM; Frequency: 836.6 MHz;Duty Cycle: 1:8
 Medium parameters used: 836.6 MHz; $\sigma = 0.925$ S/m; $\epsilon_r = 40.792$; $\rho = 1000$ kg/m³ ;
 Phantom section: Right Section

DASY5 Configuration:

- Probe: EX3DV4 - SN7431; ConvF(9.84, 9.84, 9.84); Calibrated: 2016/10/4;
- Sensor-Surface: 1.4mm (Mechanical Surface Detection)
- Electronics: DAE3 Sn379; Calibrated: 2016/10/4
- Phantom: SAM1; Type: QD000P40CC; Serial: TP:1412
- Measurement SW: DASY52, Version 52.8 (8);

Area Scan (51x91x1): Interpolated grid: dx=1.500 mm, dy=1.500 mm
 Maximum value of SAR (interpolated) = 0.350 W/kg

Zoom Scan (5x5x7)/Cube 0: Measurement grid: dx=8mm, dy=8mm, dz=5mm
 Reference Value = 10.02 V/m; Power Drift = -0.06 dB
 Peak SAR (extrapolated) = 0.419 W/kg

SAR(1 g) = 0.329 W/kg; SAR(10 g) = 0.241 W/kg

Maximum value of SAR (measured) = 0.391 W/kg



0 dB = 0.391 W/kg = -4.08 dBW/kg

Test Plot 5#: GSM 850_Body Worn Back_Low Channel

DUT: Mobile phone; Type: KSHR; Serial: 17021300121

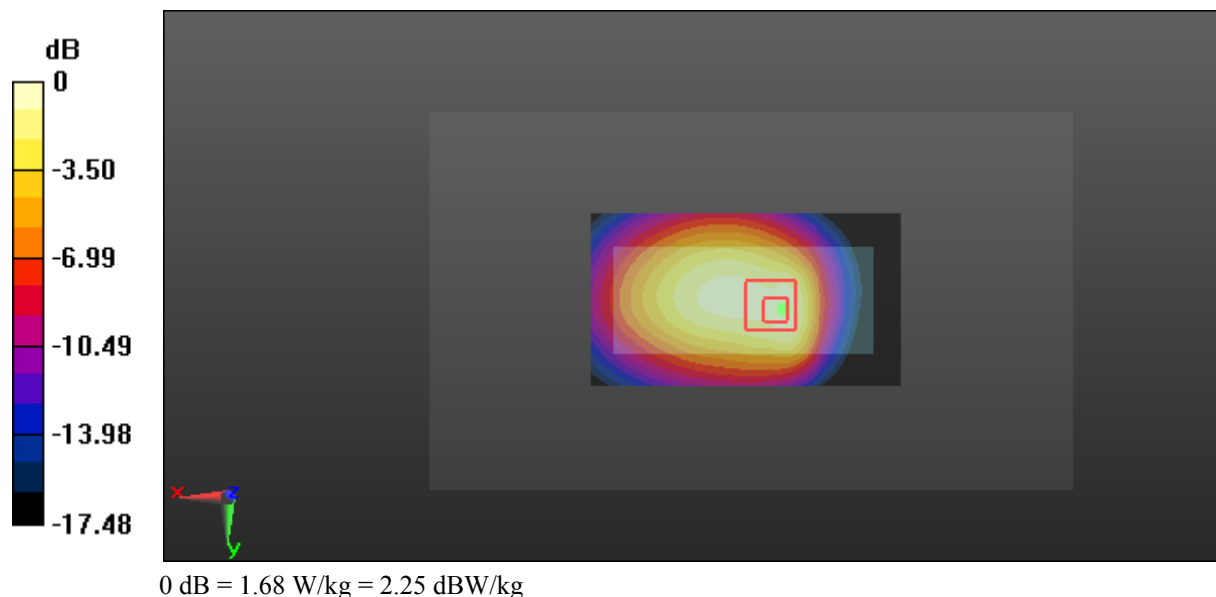
Communication System:GSM; Frequency: 824.2 MHz;Duty Cycle: 1:8
 Medium parameters used: 824.2 MHz; $\sigma = 0.965$ S/m; $\epsilon_r = 54.942$; $\rho = 1000$ kg/m³ ;
 Phantom section: Right Section

DASY5 Configuration:

- Probe: EX3DV4 - SN7431; ConvF(9.89, 9.89, 9.89); Calibrated: 2016/10/4;
- Sensor-Surface: 1.4mm (Mechanical Surface Detection)
- Electronics: DAE3 Sn379; Calibrated: 2016/10/4
- Phantom: Triple Flat Phantom 5.1C; Type: QD 000 P51 CA; Serial: 1130
- Measurement SW: DASY52, Version 52.8 (8);

Area Scan (91x51x1): Interpolated grid: dx=1.500 mm, dy=1.500 mm
 Maximum value of SAR (interpolated) = 1.67 W/kg

Zoom Scan (5x5x7)/Cube 0: Measurement grid: dx=8mm, dy=8mm, dz=5mm
 Reference Value = 36.25 V/m; Power Drift = -0.05 dB
 Peak SAR (extrapolated) = 1.96 W/kg
SAR(1 g) = 1.18 W/kg; SAR(10 g) = 0.775 W/kg
 Maximum value of SAR (measured) = 1.68 W/kg



Test Plot 6#: GSM 850_Body Worn Back_Middle Channel

DUT: Mobile phone; Type: KSHR; Serial: 17021300121

Communication System:GSM; Frequency: 836.6 MHz;Duty Cycle: 1:8
 Medium parameters used: 836.6 MHz; $\sigma = 0.987$ S/m; $\epsilon_r = 54.676$; $\rho = 1000$ kg/m³ ;
 Phantom section: Right Section

DASY5 Configuration:

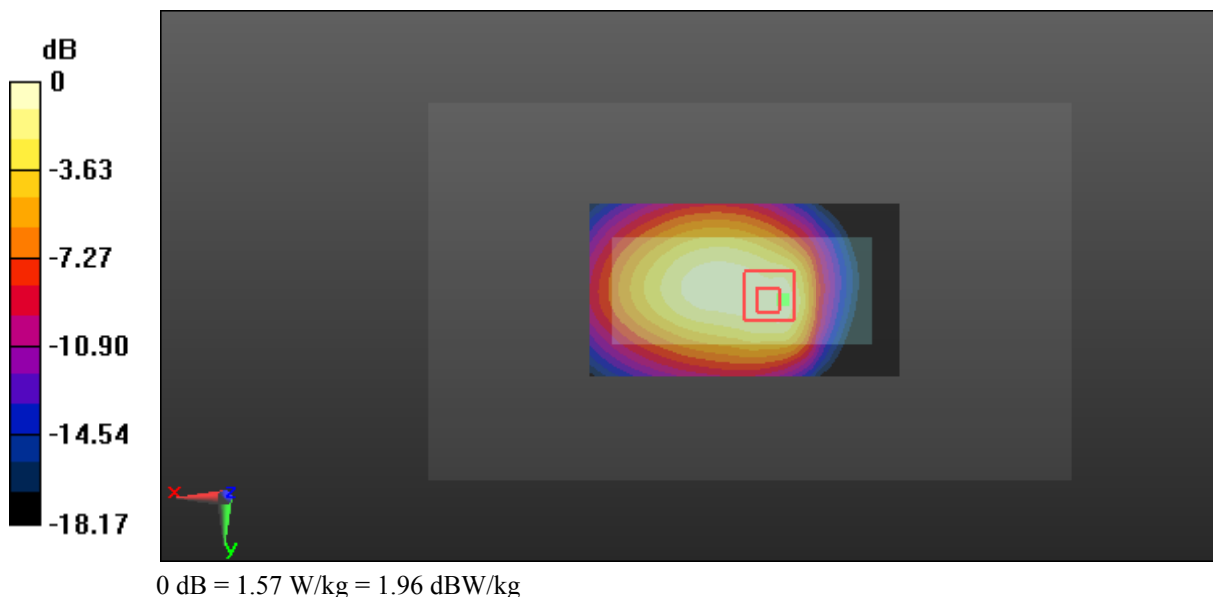
- Probe: EX3DV4 - SN7431; ConvF(9.89, 9.89, 9.89); Calibrated: 2016/10/4;
- Sensor-Surface: 1.4mm (Mechanical Surface Detection)
- Electronics: DAE3 Sn379; Calibrated: 2016/10/4
- Phantom: Triple Flat Phantom 5.1C; Type: QD 000 P51 CA; Serial: 1130
- Measurement SW: DASY52, Version 52.8 (8);

Area Scan (91x51x1): Interpolated grid: dx=1.500 mm, dy=1.500 mm
 Maximum value of SAR (interpolated) = 1.50 W/kg

Zoom Scan (5x5x7)/Cube 0: Measurement grid: dx=8mm, dy=8mm, dz=5mm
 Reference Value = 35.14 V/m; Power Drift = -0.03 dB
 Peak SAR (extrapolated) = 1.90 W/kg

SAR(1 g) = 1.13 W/kg; SAR(10 g) = 0.724 W/kg

Maximum value of SAR (measured) = 1.57 W/kg



Test Plot 7#: GSM 850_Body Worn Back_High Channel

DUT: Mobile phone; Type: KSHR; Serial: 17021300121

Communication System:GSM; Frequency: 848.8 MHz;Duty Cycle: 1:8
 Medium parameters used: 848.8 MHz; $\sigma = 1.002$ S/m; $\epsilon_r = 54.242$; $\rho = 1000$ kg/m³ ;
 Phantom section: Right Section

DASY5 Configuration:

- Probe: EX3DV4 - SN7431; ConvF(9.89, 9.89, 9.89); Calibrated: 2016/10/4;
- Sensor-Surface: 1.4mm (Mechanical Surface Detection)
- Electronics: DAE3 Sn379; Calibrated: 2016/10/4
- Phantom: Triple Flat Phantom 5.1C; Type: QD 000 P51 CA; Serial: 1130
- Measurement SW: DASY52, Version 52.8 (8);

Area Scan (91x51x1): Interpolated grid: dx=1.500 mm, dy=1.500 mm

Maximum value of SAR (interpolated) = 1.92 W/kg

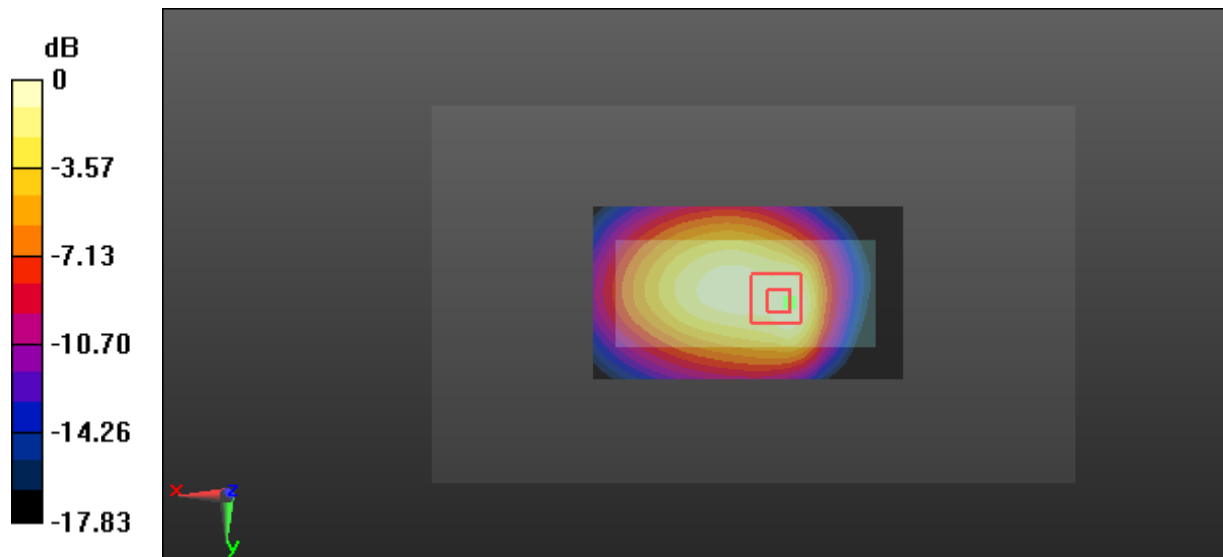
Zoom Scan (5x5x7)/Cube 0: Measurement grid: dx=8mm, dy=8mm, dz=5mm

Reference Value = 36.29 V/m; Power Drift = -0.07 dB

Peak SAR (extrapolated) = 1.98 W/kg

SAR(1 g) = 1.19 W/kg; SAR(10 g) = 0.784 W/kg

Maximum value of SAR (measured) = 1.69 W/kg



0 dB = 1.69 W/kg = 2.28 dBW/kg

Test Plot 8#: GSM 850_Body Worn Back with Headset_High Channel

DUT: Mobile phone; Type: KSHR; Serial: 17021300121

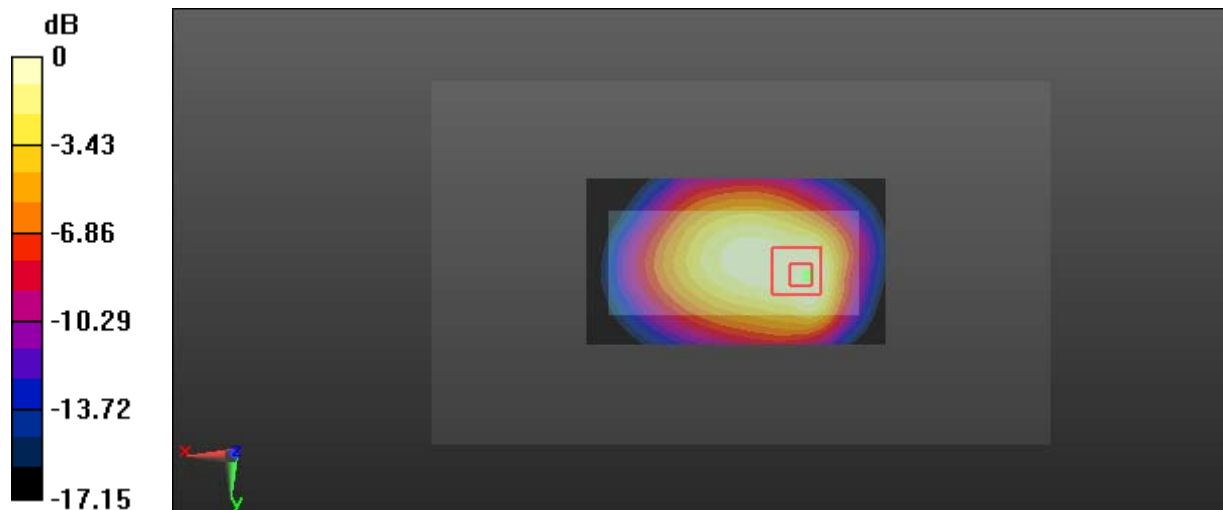
Communication System:GSM; Frequency: 848.8 MHz;Duty Cycle: 1:8
 Medium parameters used: 848.8 MHz; $\sigma = 1.002$ S/m; $\epsilon_r = 54.242$; $\rho = 1000$ kg/m³ ;
 Phantom section: Right Section

DASY5 Configuration:

- Probe: EX3DV4 - SN7431; ConvF(9.89, 9.89, 9.89); Calibrated: 2016/10/4;
- Sensor-Surface: 1.4mm (Mechanical Surface Detection)
- Electronics: DAE3 Sn379; Calibrated: 2016/10/4
- Phantom: Triple Flat Phantom 5.1C; Type: QD 000 P51 CA; Serial: 1130
- Measurement SW: DASY52, Version 52.8 (8);

Area Scan (91x51x1): Interpolated grid: dx=1.500 mm, dy=1.500 mm
 Maximum value of SAR (interpolated) = 1.76 W/kg

Zoom Scan (5x5x7)/Cube 0: Measurement grid: dx=8mm, dy=8mm, dz=5mm
 Reference Value = 33.83 V/m; Power Drift = 0.01 dB
 Peak SAR (extrapolated) = 1.67 W/kg
SAR(1 g) = 1.05 W/kg; SAR(10 g) = 0.695 W/kg
 Maximum value of SAR (measured) = 1.44 W/kg



0 dB = 1.44 W/kg = 1.58 dBW/kg

Test Plot 9#: GSM 850_Body Back_Low Channel

DUT: Mobile phone; Type: KSHR; Serial: 17021300121

Communication System:GPRS-2 slots; Frequency: 824.2 MHz;Duty Cycle: 1:4
 Medium parameters used: 824.2 MHz; $\sigma = 0.965$ S/m; $\epsilon_r = 54.942$; $\rho = 1000$ kg/m³ ;
 Phantom section: Right Section

DASY5 Configuration:

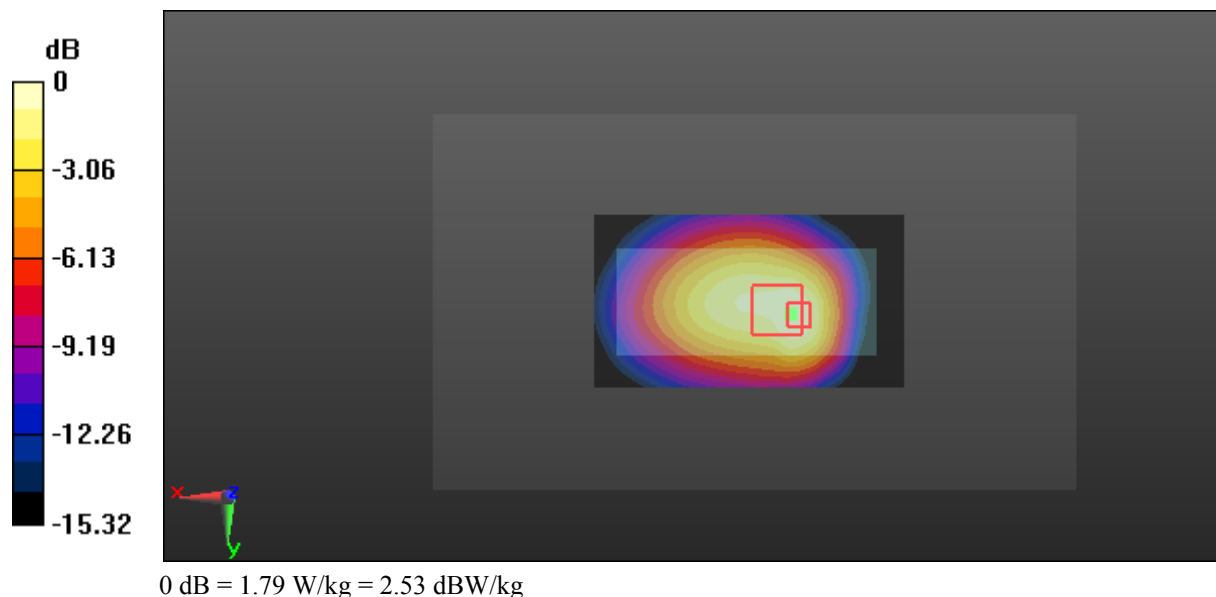
- Probe: EX3DV4 - SN7431; ConvF(9.89, 9.89, 9.89); Calibrated: 2016/10/4;
- Sensor-Surface: 1.4mm (Mechanical Surface Detection)
- Electronics: DAE3 Sn379; Calibrated: 2016/10/4
- Phantom: Triple Flat Phantom 5.1C; Type: QD 000 P51 CA; Serial: 1130
- Measurement SW: DASY52, Version 52.8 (8);

Area Scan (91x51x1): Interpolated grid: dx=1.500 mm, dy=1.500 mm
 Maximum value of SAR (interpolated) = 1.92 W/kg

Zoom Scan (5x5x7)/Cube 0: Measurement grid: dx=8mm, dy=8mm, dz=5mm
 Reference Value = 36.88 V/m; Power Drift = -0.01 dB
 Peak SAR (extrapolated) = 2.19 W/kg

SAR(1 g) = 1.24 W/kg; SAR(10 g) = 0.831 W/kg

Maximum value of SAR (measured) = 1.79 W/kg



Test Plot 10#: GSM 850_Body Back_Middle Channel

DUT: Mobile phone; Type: KSHR; Serial: 17021300121

Communication System:GPRS-2 slots; Frequency: 836.6 MHz;Duty Cycle: 1:4
 Medium parameters used: 836.6 MHz; $\sigma = 0.987$ S/m; $\epsilon_r = 54.676$; $\rho = 1000$ kg/m³ ;
 Phantom section: Right Section

DASY5 Configuration:

- Probe: EX3DV4 - SN7431; ConvF(9.89, 9.89, 9.89); Calibrated: 2016/10/4;
- Sensor-Surface: 1.4mm (Mechanical Surface Detection)
- Electronics: DAE3 Sn379; Calibrated: 2016/10/4
- Phantom: Triple Flat Phantom 5.1C; Type: QD 000 P51 CA; Serial: 1130
- Measurement SW: DASY52, Version 52.8 (8);

Area Scan (91x51x1): Interpolated grid: dx=1.500 mm, dy=1.500 mm

Maximum value of SAR (interpolated) = 2.02 W/kg

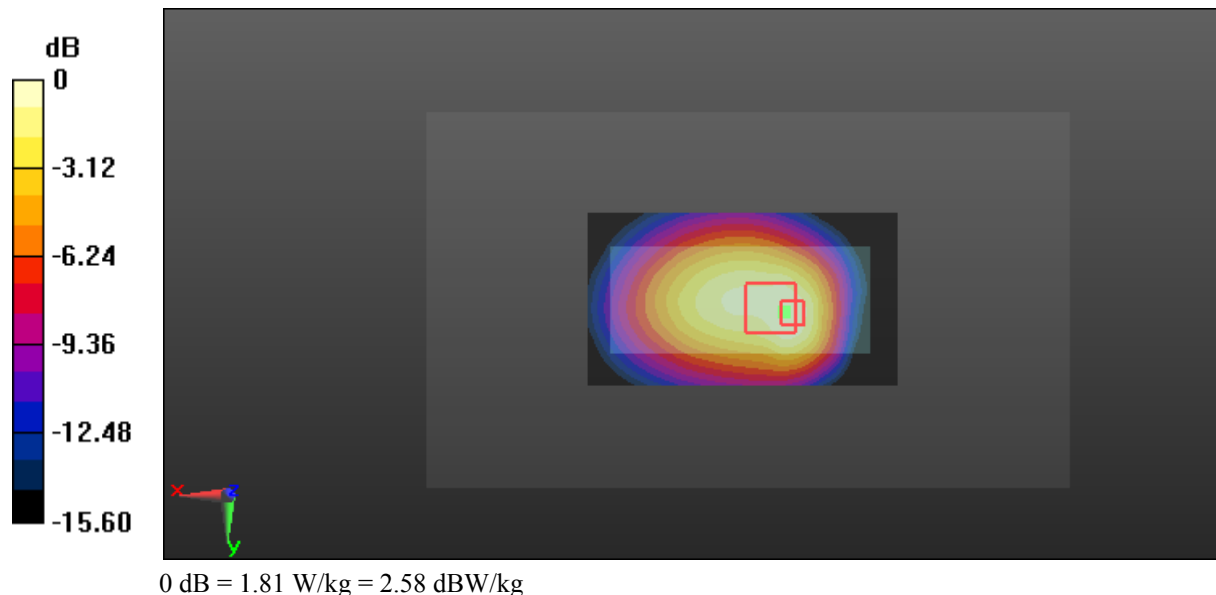
Zoom Scan (5x5x7)/Cube 0: Measurement grid: dx=8mm, dy=8mm, dz=5mm

Reference Value = 37.40 V/m; Power Drift = -0.06 dB

Peak SAR (extrapolated) = 2.23 W/kg

SAR(1 g) = 1.26 W/kg; SAR(10 g) = 0.838 W/kg

Maximum value of SAR (measured) = 1.81 W/kg



Test Plot 11#: GSM 850_Body Back_High Channel

DUT: Mobile phone; Type: KSHR; Serial: 17021300121

Communication System:GPRS-2 slots; Frequency: 848.8 MHz;Duty Cycle: 1:4
 Medium parameters used: 848.8 MHz; $\sigma = 1.002$ S/m; $\epsilon_r = 54.242$; $\rho = 1000$ kg/m³ ;
 Phantom section: Right Section

DASY5 Configuration:

- Probe: EX3DV4 - SN7431; ConvF(9.89, 9.89, 9.89); Calibrated: 2016/10/4;
- Sensor-Surface: 1.4mm (Mechanical Surface Detection)
- Electronics: DAE3 Sn379; Calibrated: 2016/10/4
- Phantom: Triple Flat Phantom 5.1C; Type: QD 000 P51 CA; Serial: 1130
- Measurement SW: DASY52, Version 52.8 (8);

Area Scan (91x51x1): Interpolated grid: dx=1.500 mm, dy=1.500 mm

Maximum value of SAR (interpolated) = 2.03 W/kg

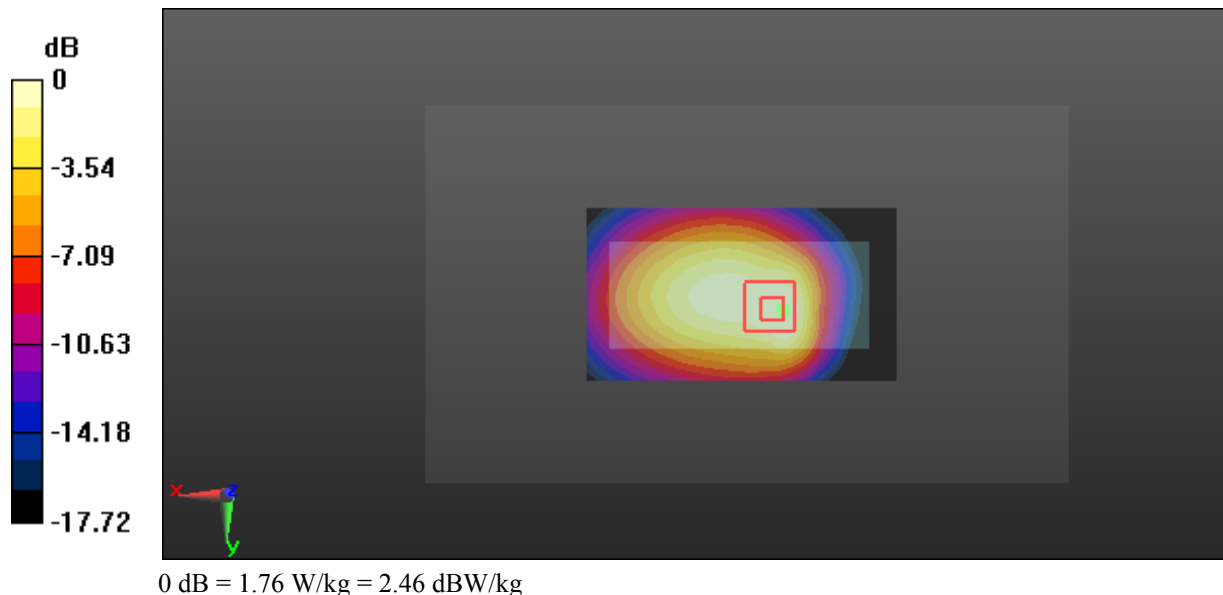
Zoom Scan (5x5x7)/Cube 0: Measurement grid: dx=8mm, dy=8mm, dz=5mm

Reference Value = 36.86 V/m; Power Drift = 0.02 dB

Peak SAR (extrapolated) = 2.04 W/kg

SAR(1 g) = 1.27 W/kg; SAR(10 g) = 0.835 W/kg

Maximum value of SAR (measured) = 1.76 W/kg



Test Plot 12#: GSM 1900_Head Left Cheek_Low Channel**DUT: Mobile phone; Type: KSHR; Serial: 17021300121**

Communication System: GSM; Frequency: 1850.2 MHz; Duty Cycle: 1:8
Medium parameters used: 1850.2 MHz; $\sigma = 1.362$ S/m; $\epsilon_r = 39.238$; $\rho = 1000$ kg/m³ ;
Phantom section: Left Section

DASY5 Configuration:

- Probe: EX3DV4 - SN7431; ConvF(8.18, 8.18, 8.18); Calibrated: 2016/10/4;
- Sensor-Surface: 1.4mm (Mechanical Surface Detection)
- Electronics: DAE3 Sn379; Calibrated: 2016/10/4
- Phantom: SAM1; Type: QD000P40CC; Serial: TP:1412
- Measurement SW: DASY52, Version 52.8 (8);

Area Scan (51x91x1): Interpolated grid: dx=1.500 mm, dy=1.500 mm

Maximum value of SAR (interpolated) = 1.37 W/kg

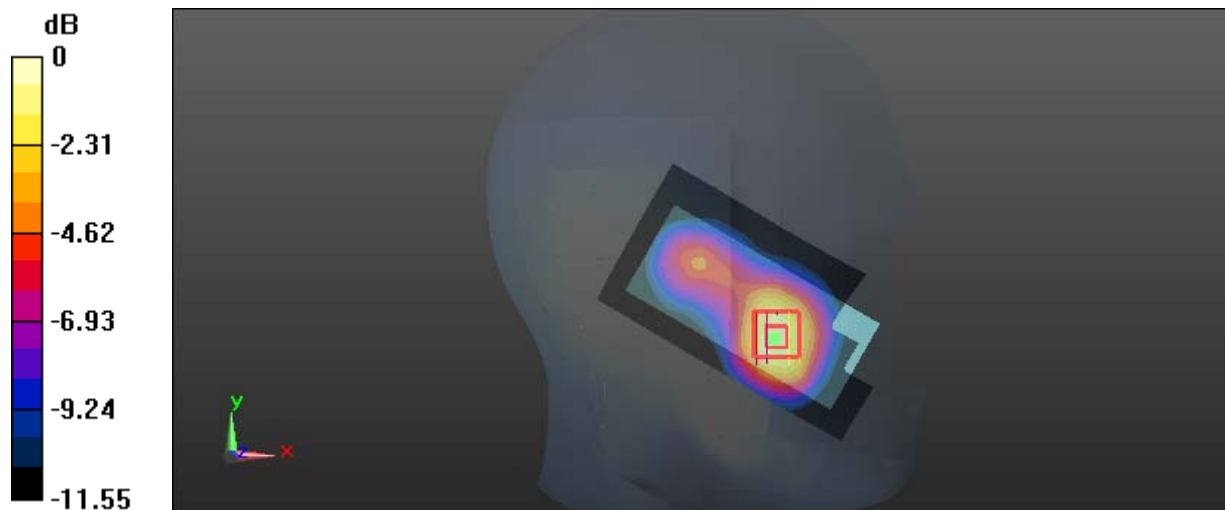
Zoom Scan (5x5x7)/Cube 0: Measurement grid: dx=8mm, dy=8mm, dz=5mm

Reference Value = 13.21 V/m; Power Drift = -0.01 dB

Peak SAR (extrapolated) = 1.95 W/kg

SAR(1 g) = 1.2 W/kg; SAR(10 g) = 0.705 W/kg

Maximum value of SAR (measured) = 1.68 W/kg



0 dB = 1.68 W/kg = 2.25 dBW/kg

Test Plot 13#: GSM 1900_Head Left Cheek_Middle Channel**DUT: Mobile phone; Type: KSHR; Serial: 17021300121**

Communication System: GSM; Frequency: 1880 MHz; Duty Cycle: 1:8
Medium parameters used: 1880 MHz; $\sigma = 1.392$ S/m; $\epsilon_r = 39.114$; $\rho = 1000$ kg/m³ ;
Phantom section: Left Section

DASY5 Configuration:

- Probe: EX3DV4 - SN7431; ConvF(8.18, 8.18, 8.18); Calibrated: 2016/10/4;
- Sensor-Surface: 1.4mm (Mechanical Surface Detection)
- Electronics: DAE3 Sn379; Calibrated: 2016/10/4
- Phantom: SAM1; Type: QD000P40CC; Serial: TP:1412
- Measurement SW: DASY52, Version 52.8 (8);

Area Scan (51x91x1): Interpolated grid: dx=1.500 mm, dy=1.500 mm

Maximum value of SAR (interpolated) = 1.34 W/kg

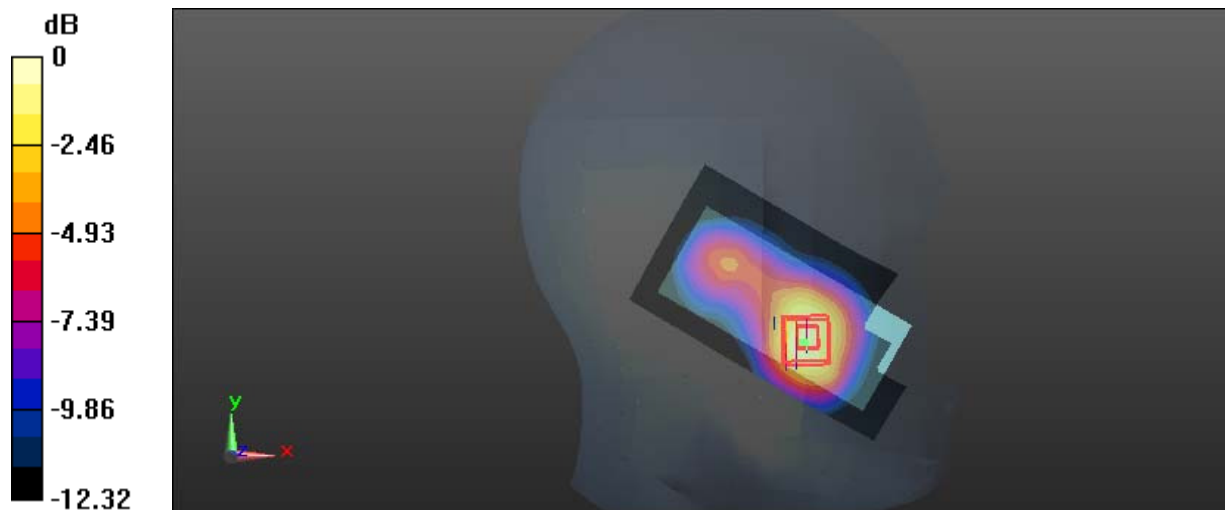
Zoom Scan (5x5x7)/Cube 0: Measurement grid: dx=8mm, dy=8mm, dz=5mm

Reference Value = 13.34 V/m; Power Drift = -0.11 dB

Peak SAR (extrapolated) = 1.86 W/kg

SAR(1 g) = 1.14 W/kg; SAR(10 g) = 0.658 W/kg

Maximum value of SAR (measured) = 1.59 W/kg



0 dB = 1.59 W/kg = 2.01 dBW/kg

Test Plot 14#: GSM 1900_Head Left Cheek_High Channel

DUT: Mobile phone; Type: KSHR; Serial: 17021300121

Communication System:GSM; Frequency: 1909.8 MHz;Duty Cycle: 1:8
 Medium parameters used: 1909.8 MHz; $\sigma = 1.414$ S/m; $\epsilon_r = 38.977$; $\rho = 1000$ kg/m³ ;
 Phantom section: Left Section

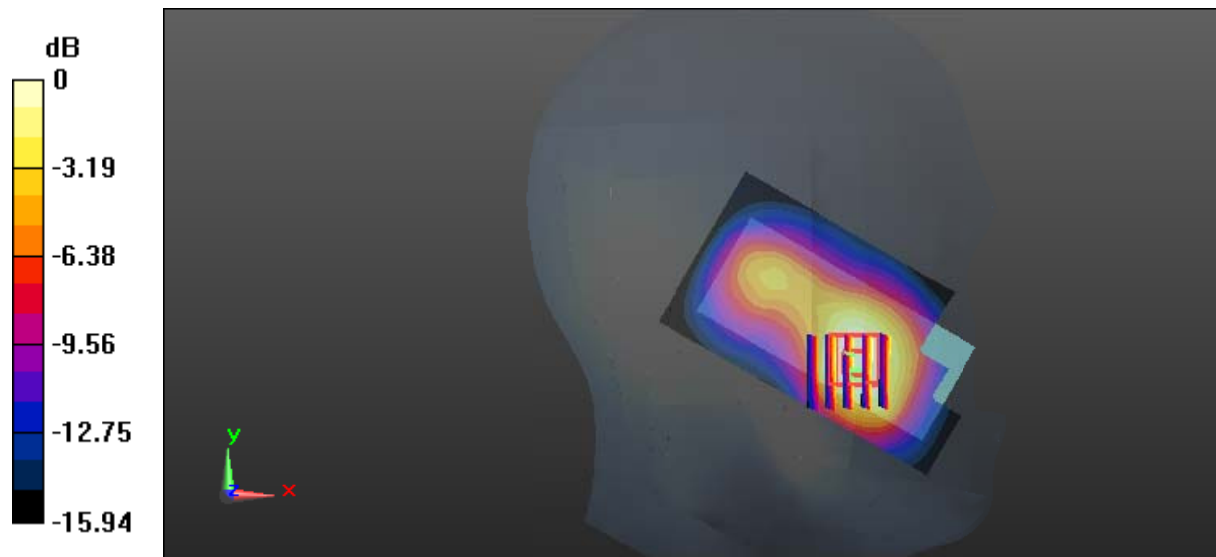
DASY5 Configuration:

- Probe: EX3DV4 - SN7431; ConvF(8.18, 8.18, 8.18); Calibrated: 2016/10/4;
- Sensor-Surface: 1.4mm (Mechanical Surface Detection)
- Electronics: DAE3 Sn379; Calibrated: 2016/10/4
- Phantom: SAM1; Type: QD000P40CC; Serial: TP:1412
- Measurement SW: DASY52, Version 52.8 (8);

Area Scan (51x91x1): Interpolated grid: dx=1.500 mm, dy=1.500 mm
 Maximum value of SAR (interpolated) = 1.74 W/kg

Zoom Scan (5x5x7)/Cube 0: Measurement grid: dx=8mm, dy=8mm, dz=5mm
 Reference Value = 11.90 V/m; Power Drift = -0.05 dB
 Peak SAR (extrapolated) = 1.87 W/kg

SAR(1 g) = 1.11 W/kg; SAR(10 g) = 0.649 W/kg
 Maximum value of SAR (measured) = 1.54 W/kg



0 dB = 1.54 W/kg = 1.88 dBW/kg

Test Plot 15#: GSM 1900_Head Left Tilt_Middle Channel

DUT: Mobile phone; Type: KSHR; Serial: 17021300121

Communication System: GSM; Frequency: 1880 MHz; Duty Cycle: 1:8
 Medium parameters used: 1880 MHz; $\sigma = 1.392 \text{ S/m}$; $\epsilon_r = 39.114$; $\rho = 1000 \text{ kg/m}^3$;
 Phantom section: Left Section

DASY5 Configuration:

- Probe: EX3DV4 - SN7431; ConvF(8.18, 8.18, 8.18); Calibrated: 2016/10/4;
- Sensor-Surface: 1.4mm (Mechanical Surface Detection)
- Electronics: DAE3 Sn379; Calibrated: 2016/10/4
- Phantom: SAM1; Type: QD000P40CC; Serial: TP:1412
- Measurement SW: DASY52, Version 52.8 (8);

Area Scan (51x91x1): Interpolated grid: dx=1.500 mm, dy=1.500 mm

Maximum value of SAR (interpolated) = 0.580 W/kg

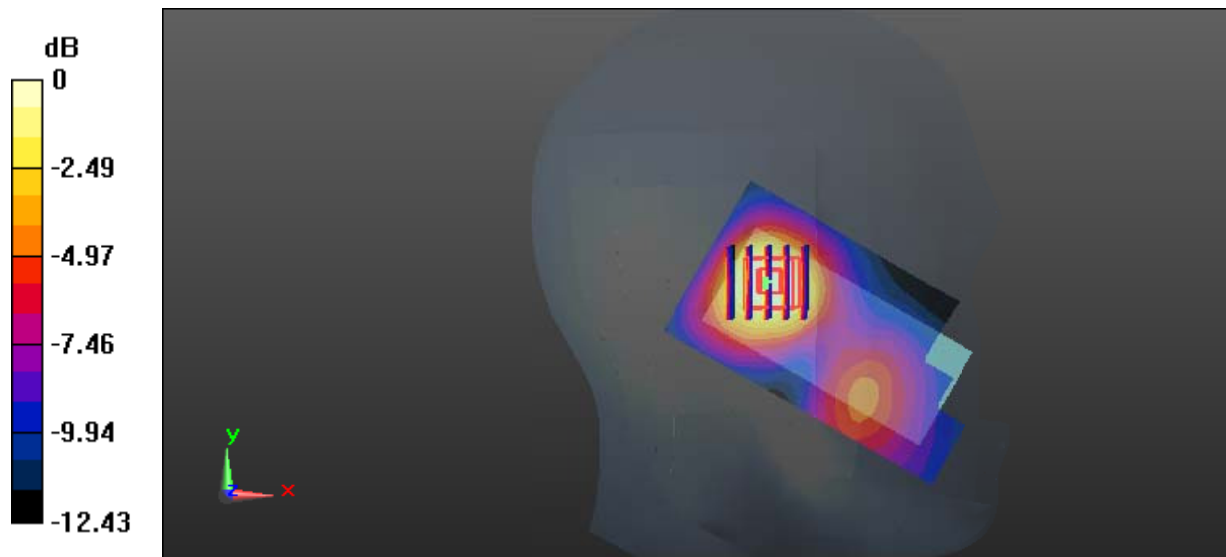
Zoom Scan (5x5x7)/Cube 0: Measurement grid: dx=8mm, dy=8mm, dz=5mm

Reference Value = 13.72 V/m; Power Drift = -0.01 dB

Peak SAR (extrapolated) = 0.621 W/kg

SAR(1 g) = 0.383 W/kg; SAR(10 g) = 0.230 W/kg

Maximum value of SAR (measured) = 0.528 W/kg



0 dB = 0.528 W/kg = -2.77 dBW/kg

Test Plot 16#: GSM 1900_Head Right Cheek_Low Channel

DUT: Mobile phone; Type: KSHR; Serial: 17021300121

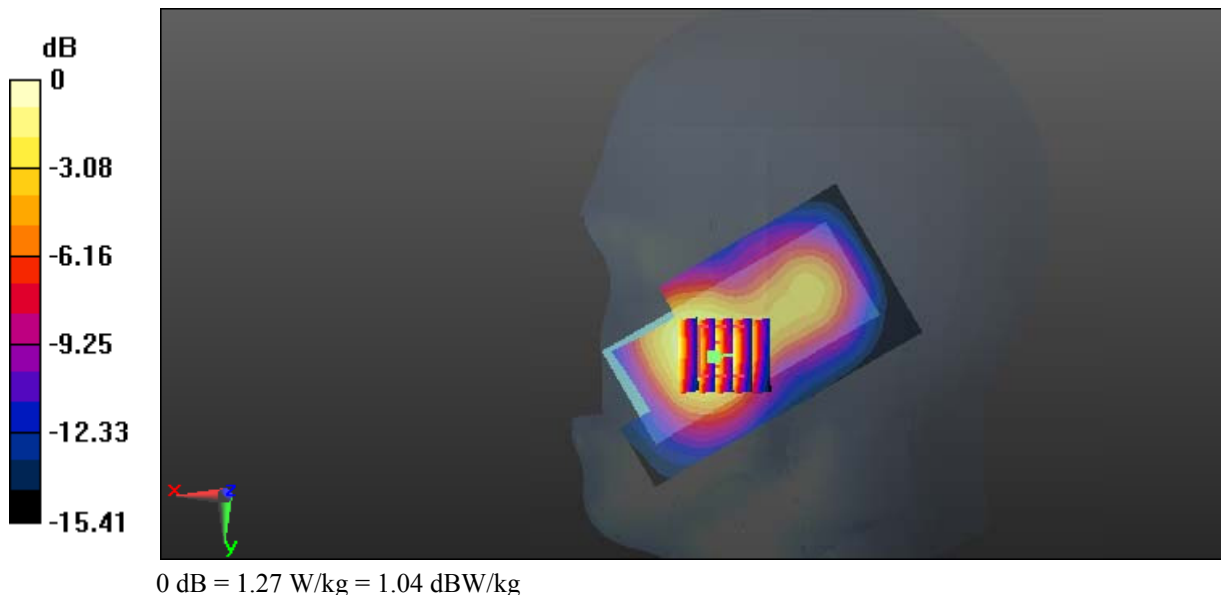
Communication System:GSM; Frequency: 1850.2 MHz;Duty Cycle: 1:8
 Medium parameters used: 1850.2 MHz; $\sigma = 1.362$ S/m; $\epsilon_r = 39.238$; $\rho = 1000$ kg/m³ ;
 Phantom section: Right Section

DASY5 Configuration:

- Probe: EX3DV4 - SN7431; ConvF(8.18, 8.18, 8.18); Calibrated: 2016/10/4;
- Sensor-Surface: 1.4mm (Mechanical Surface Detection)
- Electronics: DAE3 Sn379; Calibrated: 2016/10/4
- Phantom: SAM1; Type: QD000P40CC; Serial: TP:1412
- Measurement SW: DASY52, Version 52.8 (8);

Area Scan (51x91x1): Interpolated grid: dx=1.500 mm, dy=1.500 mm
 Maximum value of SAR (interpolated) = 1.33 W/kg

Zoom Scan (5x5x7)/Cube 0: Measurement grid: dx=8mm, dy=8mm, dz=5mm
 Reference Value = 11.26 V/m; Power Drift = -0.02 dB
 Peak SAR (extrapolated) = 1.45 W/kg
SAR(1 g) = 0.916 W/kg; SAR(10 g) = 0.543 W/kg
 Maximum value of SAR (measured) = 1.27 W/kg



Test Plot 17#: GSM 1900_Head Right Cheek_Middle Channel

DUT: Mobile phone; Type: KSHR; Serial: 17021300121

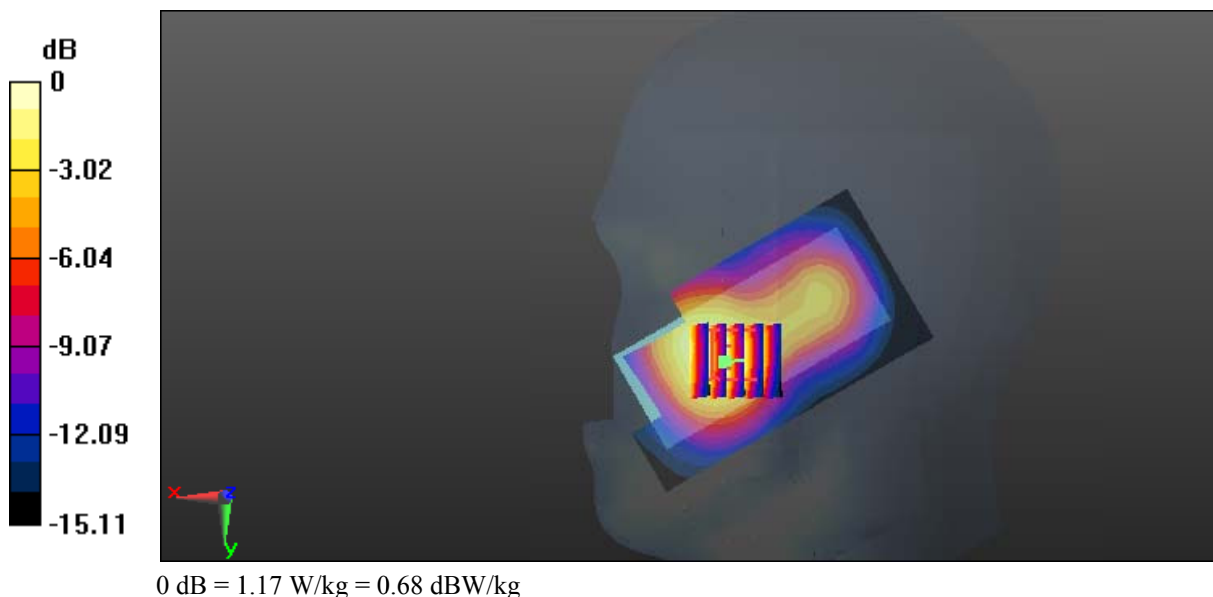
Communication System:GSM; Frequency: 1880 MHz;Duty Cycle: 1:8
 Medium parameters used: 1880 MHz; $\sigma = 1.392 \text{ S/m}$; $\epsilon_r = 39.114$; $\rho = 1000 \text{ kg/m}^3$;
 Phantom section: Right Section

DASY5 Configuration:

- Probe: EX3DV4 - SN7431; ConvF(8.18, 8.18, 8.18); Calibrated: 2016/10/4;
- Sensor-Surface: 1.4mm (Mechanical Surface Detection)
- Electronics: DAE3 Sn379; Calibrated: 2016/10/4
- Phantom: SAM1; Type: QD000P40CC; Serial: TP:1412
- Measurement SW: DASY52, Version 52.8 (8);

Area Scan (51x91x1): Interpolated grid: dx=1.500 mm, dy=1.500 mm
 Maximum value of SAR (interpolated) = 1.26 W/kg

Zoom Scan (5x5x7)/Cube 0: Measurement grid: dx=8mm, dy=8mm, dz=5mm
 Reference Value = 10.42 V/m; Power Drift = -0.04 dB
 Peak SAR (extrapolated) = 1.35 W/kg
SAR(1 g) = 0.853 W/kg; SAR(10 g) = 0.506 W/kg
 Maximum value of SAR (measured) = 1.17 W/kg



Test Plot 18#: GSM 1900_Head Right Cheek_High Channel**DUT: Mobile phone; Type: KSHR; Serial: 17021300121**

Communication System: GSM; Frequency: 1909.8 MHz; Duty Cycle: 1:8
Medium parameters used: 1909.8 MHz; $\sigma = 1.414$ S/m; $\epsilon_r = 38.977$; $\rho = 1000$ kg/m³ ;
Phantom section: Right Section

DASY5 Configuration:

- Probe: EX3DV4 - SN7431; ConvF(8.18, 8.18, 8.18); Calibrated: 2016/10/4;
- Sensor-Surface: 1.4mm (Mechanical Surface Detection)
- Electronics: DAE3 Sn379; Calibrated: 2016/10/4
- Phantom: SAM1; Type: QD000P40CC; Serial: TP:1412
- Measurement SW: DASY52, Version 52.8 (8);

Area Scan (51x91x1): Interpolated grid: dx=1.500 mm, dy=1.500 mm

Maximum value of SAR (interpolated) = 1.22 W/kg

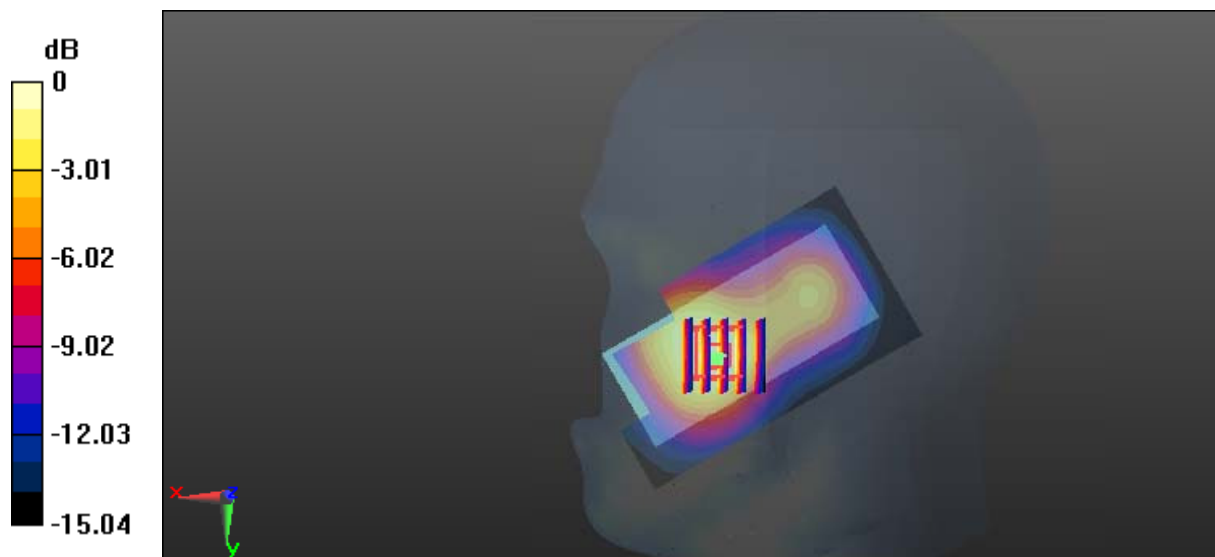
Zoom Scan (5x5x7)/Cube 0: Measurement grid: dx=8mm, dy=8mm, dz=5mm

Reference Value = 10.16 V/m; Power Drift = -0.12 dB

Peak SAR (extrapolated) = 1.36 W/kg

SAR(1 g) = 0.835 W/kg; SAR(10 g) = 0.492 W/kg

Maximum value of SAR (measured) = 1.18 W/kg



0 dB = 1.18 W/kg = 0.72 dBW/kg

Test Plot 19#: GSM 1900_Head Right Tilt_Middle Channel

DUT: Mobile phone; Type: KSHR; Serial: 17021300121

Communication System:GSM; Frequency: 1880 MHz;Duty Cycle: 1:8
 Medium parameters used: 1880 MHz; $\sigma = 1.392 \text{ S/m}$; $\epsilon_r = 39.114$; $\rho = 1000 \text{ kg/m}^3$;
 Phantom section: Right Section

DASY5 Configuration:

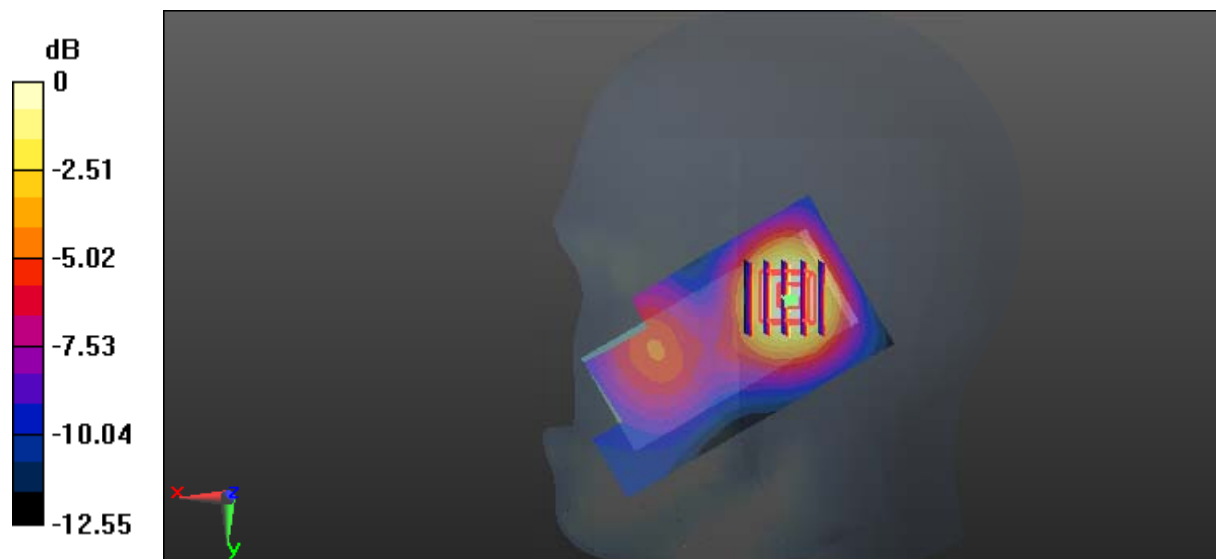
- Probe: EX3DV4 - SN7431; ConvF(8.18, 8.18, 8.18); Calibrated: 2016/10/4;
- Sensor-Surface: 1.4mm (Mechanical Surface Detection)
- Electronics: DAE3 Sn379; Calibrated: 2016/10/4
- Phantom: SAM1; Type: QD000P40CC; Serial: TP:1412
- Measurement SW: DASY52, Version 52.8 (8);

Area Scan (51x91x1): Interpolated grid: dx=1.500 mm, dy=1.500 mm
 Maximum value of SAR (interpolated) = 0.528 W/kg

Zoom Scan (5x5x7)/Cube 0: Measurement grid: dx=8mm, dy=8mm, dz=5mm
 Reference Value = 13.19 V/m; Power Drift = -0.03 dB
 Peak SAR (extrapolated) = 0.558 W/kg

SAR(1 g) = 0.358 W/kg; SAR(10 g) = 0.215 W/kg

Maximum value of SAR (measured) = 0.489 W/kg



0 dB = 0.489 W/kg = -3.11 dBW/kg

Test Plot 20#: GSM 1900_Body Worn Back_Low Channel

DUT: Mobile phone; Type: KSHR; Serial: 17021300121

Communication System:GSM; Frequency: 1850.2 MHz;Duty Cycle: 1:8
 Medium parameters used: 1850.2 MHz; $\sigma = 1.481$ S/m; $\epsilon_r = 53.179$; $\rho = 1000$ kg/m³ ;
 Phantom section: Left Section

DASY5 Configuration:

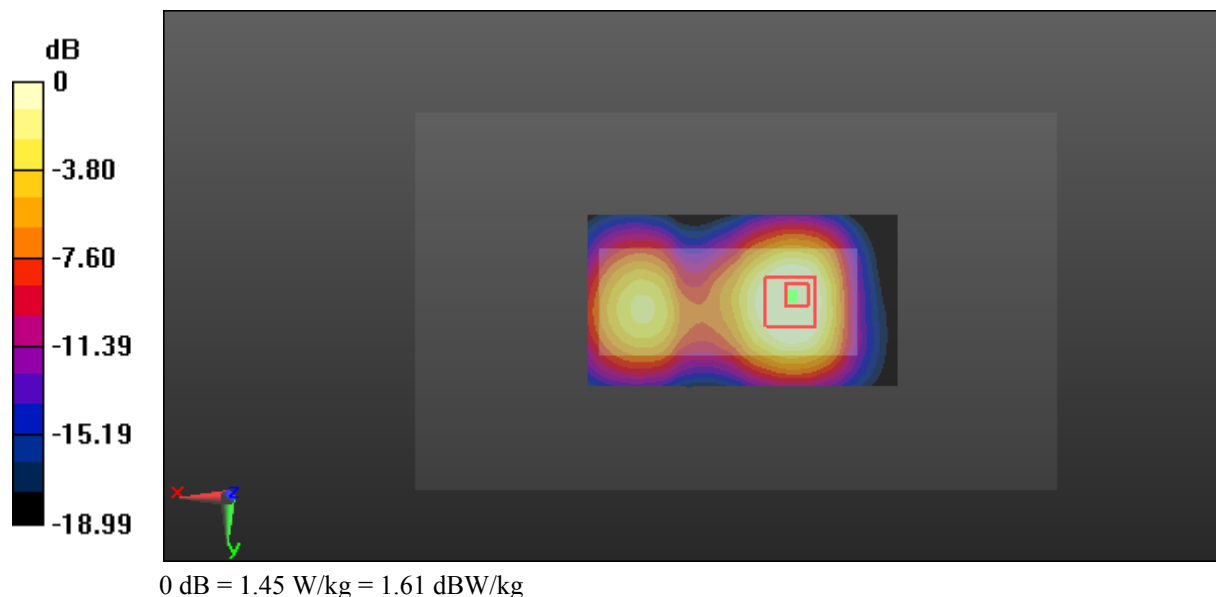
- Probe: EX3DV4 - SN7431; ConvF(7.98, 7.98, 7.98); Calibrated: 2016/10/4;
- Sensor-Surface: 1.4mm (Mechanical Surface Detection)
- Electronics: DAE3 Sn379; Calibrated: 2016/10/4
- Phantom: Triple Flat Phantom 5.1C; Type: QD 000 P51 CA; Serial: 1130
- Measurement SW: DASY52, Version 52.8 (8);

Area Scan (91x51x1): Interpolated grid: dx=1.500 mm, dy=1.500 mm
 Maximum value of SAR (interpolated) = 2.18 W/kg

Zoom Scan (5x5x7)/Cube 0: Measurement grid: dx=8mm, dy=8mm, dz=5mm
 Reference Value = 17.53 V/m; Power Drift = 0.14 dB
 Peak SAR (extrapolated) = 2.44 W/kg

SAR(1 g) = 1.31 W/kg; SAR(10 g) = 0.740 W/kg

Maximum value of SAR (measured) = 1.45 W/kg



Test Plot 21#: GSM 1900_Body Worn Back_Middle Channel

DUT: Mobile phone; Type: KSHR; Serial: 17021300121

Communication System:GSM; Frequency: 1880 MHz;Duty Cycle: 1:8
 Medium parameters used: 1880 MHz; $\sigma = 1.513 \text{ S/m}$; $\epsilon_r = 52.679$; $\rho = 1000 \text{ kg/m}^3$;
 Phantom section: Left Section

DASY5 Configuration:

- Probe: EX3DV4 - SN7431; ConvF(7.98, 7.98, 7.98); Calibrated: 2016/10/4;
- Sensor-Surface: 1.4mm (Mechanical Surface Detection)
- Electronics: DAE3 Sn379; Calibrated: 2016/10/4
- Phantom: Triple Flat Phantom 5.1C; Type: QD 000 P51 CA; Serial: 1130
- Measurement SW: DASY52, Version 52.8 (8);

Area Scan (91x51x1): Interpolated grid: dx=1.500 mm, dy=1.500 mm

Maximum value of SAR (interpolated) = 2.09 W/kg

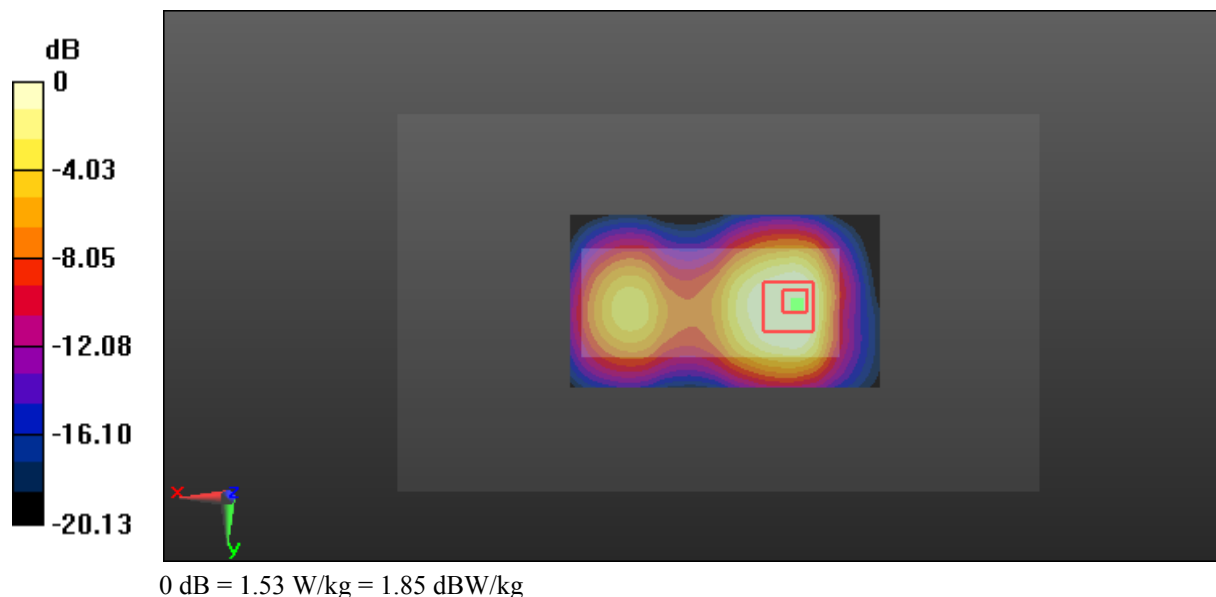
Zoom Scan (5x5x7)/Cube 0: Measurement grid: dx=8mm, dy=8mm, dz=5mm

Reference Value = 15.27 V/m; Power Drift = 0.02 dB

Peak SAR (extrapolated) = 2.72 W/kg

SAR(1 g) = 1.28 W/kg; SAR(10 g) = 0.715 W/kg

Maximum value of SAR (measured) = 1.53 W/kg



Test Plot 22#: GSM 1900_Body Worn Back_High Channel

DUT: Mobile phone; Type: KSHR; Serial: 17021300121

Communication System:GSM; Frequency: 1909.8 MHz;Duty Cycle: 1:8
 Medium parameters used: 1909.8 MHz; $\sigma = 1.545$ S/m; $\epsilon_r = 52.654$; $\rho = 1000$ kg/m³ ;
 Phantom section: Left Section

DASY5 Configuration:

- Probe: EX3DV4 - SN7431; ConvF(7.98, 7.98, 7.98); Calibrated: 2016/10/4;
- Sensor-Surface: 1.4mm (Mechanical Surface Detection)
- Electronics: DAE3 Sn379; Calibrated: 2016/10/4
- Phantom: Triple Flat Phantom 5.1C; Type: QD 000 P51 CA; Serial: 1130
- Measurement SW: DASY52, Version 52.8 (8);

Area Scan (91x51x1): Interpolated grid: dx=1.500 mm, dy=1.500 mm

Maximum value of SAR (interpolated) = 1.90 W/kg

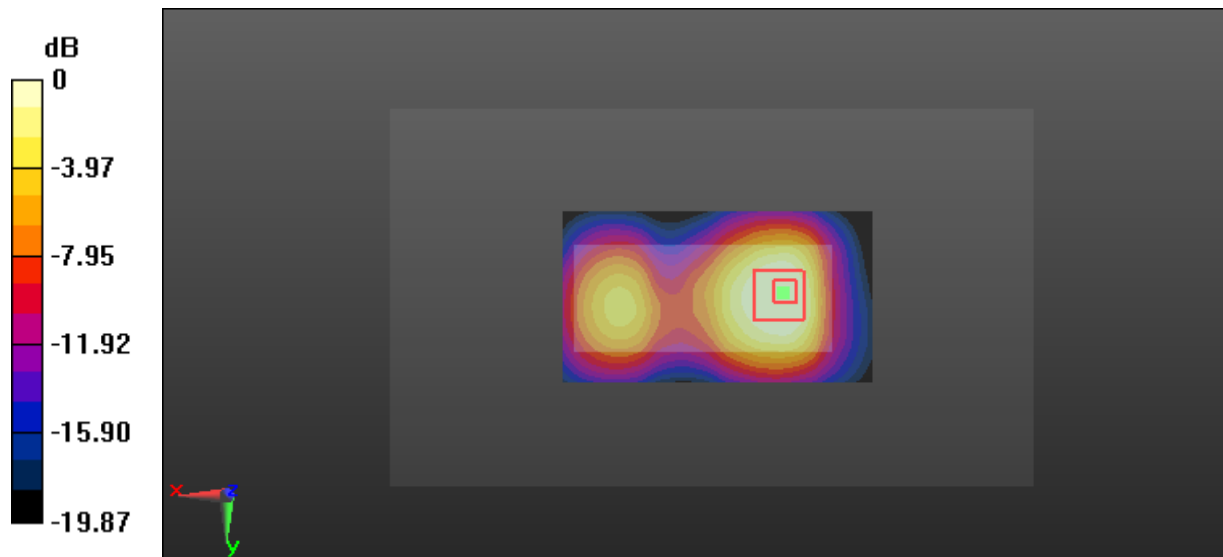
Zoom Scan (5x5x7)/Cube 0: Measurement grid: dx=8mm, dy=8mm, dz=5mm

Reference Value = 15.36 V/m; Power Drift = 0.14 dB

Peak SAR (extrapolated) = 2.67 W/kg

SAR(1 g) = 1.28 W/kg; SAR(10 g) = 0.694 W/kg

Maximum value of SAR (measured) = 1.51 W/kg



0 dB = 1.51 W/kg = 1.79 dBW/kg

Test Plot 23#: GSM 1900_Body Worn Back with Headset_High Channel

DUT: Mobile phone; Type: KSHR; Serial: 17021300121

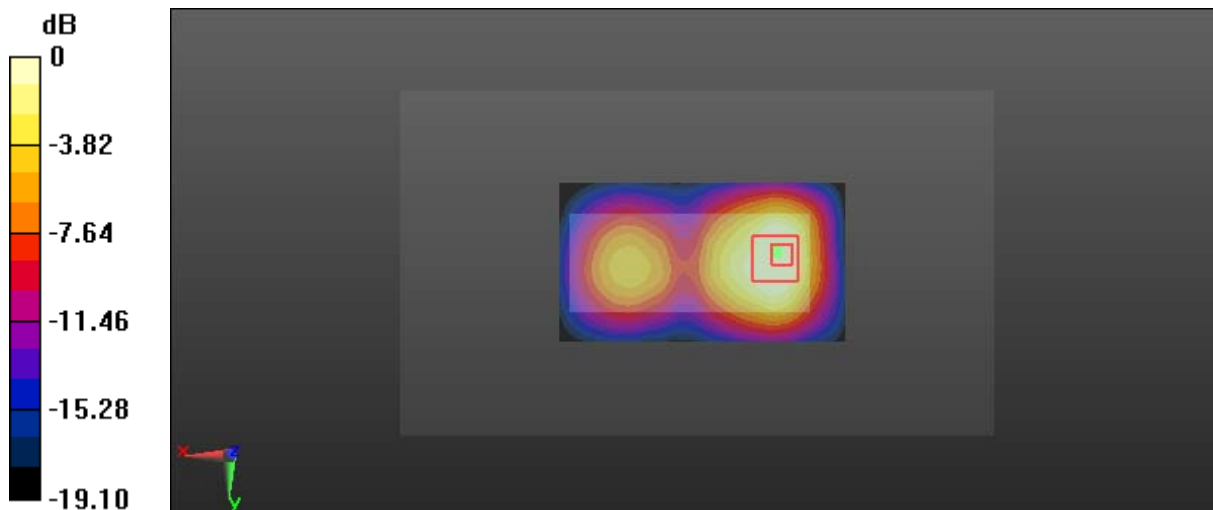
Communication System:GSM; Frequency: 1909.8 MHz;Duty Cycle: 1:8
 Medium parameters used: 1909.8 MHz; $\sigma = 1.545$ S/m; $\epsilon_r = 52.654$; $\rho = 1000$ kg/m³ ;
 Phantom section: Left Section

DASY5 Configuration:

- Probe: EX3DV4 - SN7431; ConvF(7.98, 7.98, 7.98); Calibrated: 2016/10/4;
- Sensor-Surface: 1.4mm (Mechanical Surface Detection)
- Electronics: DAE3 Sn379; Calibrated: 2016/10/4
- Phantom: Triple Flat Phantom 5.1C; Type: QD 000 P51 CA; Serial: 1130
- Measurement SW: DASY52, Version 52.8 (8);

Area Scan (91x51x1): Interpolated grid: dx=1.500 mm, dy=1.500 mm
 Maximum value of SAR (interpolated) = 2.16 W/kg

Zoom Scan (5x5x7)/Cube 0: Measurement grid: dx=8mm, dy=8mm, dz=5mm
 Reference Value = 11.05 V/m; Power Drift = 0.06 dB
 Peak SAR (extrapolated) = 2.46 W/kg
SAR(1 g) = 1.23 W/kg; SAR(10 g) = 0.646 W/kg
 Maximum value of SAR (measured) = 1.37 W/kg



0 dB = 1.37 W/kg = 1.37 dBW/kg

Test Plot 24#: GSM 1900_Body Back_Low Channel

DUT: Mobile phone; Type: KSHR; Serial: 17021300121

Communication System:GPRS-3 slots; Frequency: 1850.2 MHz;Duty Cycle: 1:2.66
 Medium parameters used: 1850.2 MHz; $\sigma = 1.481$ S/m; $\epsilon_r = 53.179$; $\rho = 1000$ kg/m³ ;
 Phantom section: Left Section

DASY5 Configuration:

- Probe: EX3DV4 - SN7431; ConvF(7.98, 7.98, 7.98); Calibrated: 2016/10/4;
- Sensor-Surface: 1.4mm (Mechanical Surface Detection)
- Electronics: DAE3 Sn379; Calibrated: 2016/10/4
- Phantom: Triple Flat Phantom 5.1C; Type: QD 000 P51 CA; Serial: 1130
- Measurement SW: DASY52, Version 52.8 (8);

Area Scan (91x51x1): Interpolated grid: dx=1.500 mm, dy=1.500 mm

Maximum value of SAR (interpolated) = 1.78 W/kg

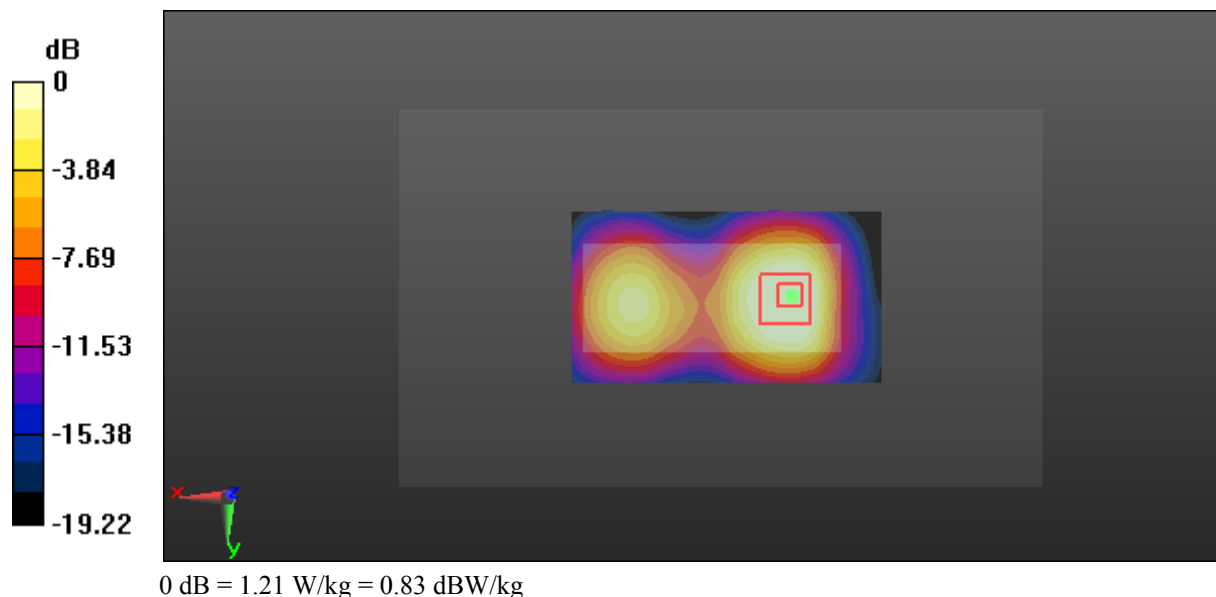
Zoom Scan (5x5x7)/Cube 0: Measurement grid: dx=8mm, dy=8mm, dz=5mm

Reference Value = 13.50 V/m; Power Drift = 0.09 dB

Peak SAR (extrapolated) = 2.04 W/kg

SAR(1 g) = 1.1 W/kg; SAR(10 g) = 0.619 W/kg

Maximum value of SAR (measured) = 1.21 W/kg



Test Plot 25#: GSM 1900_Body Back_Middle Channel

DUT: Mobile phone; Type: KSHR; Serial: 17021300121

Communication System:GPRS-3 slots; Frequency: 1880 MHz;Duty Cycle: 1:2.66
 Medium parameters used: 1880 MHz; $\sigma = 1.513$ S/m; $\epsilon_r = 52.679$; $\rho = 1000$ kg/m³ ;
 Phantom section: Left Section

DASY5 Configuration:

- Probe: EX3DV4 - SN7431; ConvF(7.98, 7.98, 7.98); Calibrated: 2016/10/4;
- Sensor-Surface: 1.4mm (Mechanical Surface Detection)
- Electronics: DAE3 Sn379; Calibrated: 2016/10/4
- Phantom: Triple Flat Phantom 5.1C; Type: QD 000 P51 CA; Serial: 1130
- Measurement SW: DASY52, Version 52.8 (8);

Area Scan (91x51x1): Interpolated grid: dx=1.500 mm, dy=1.500 mm

Maximum value of SAR (interpolated) = 2.08 W/kg

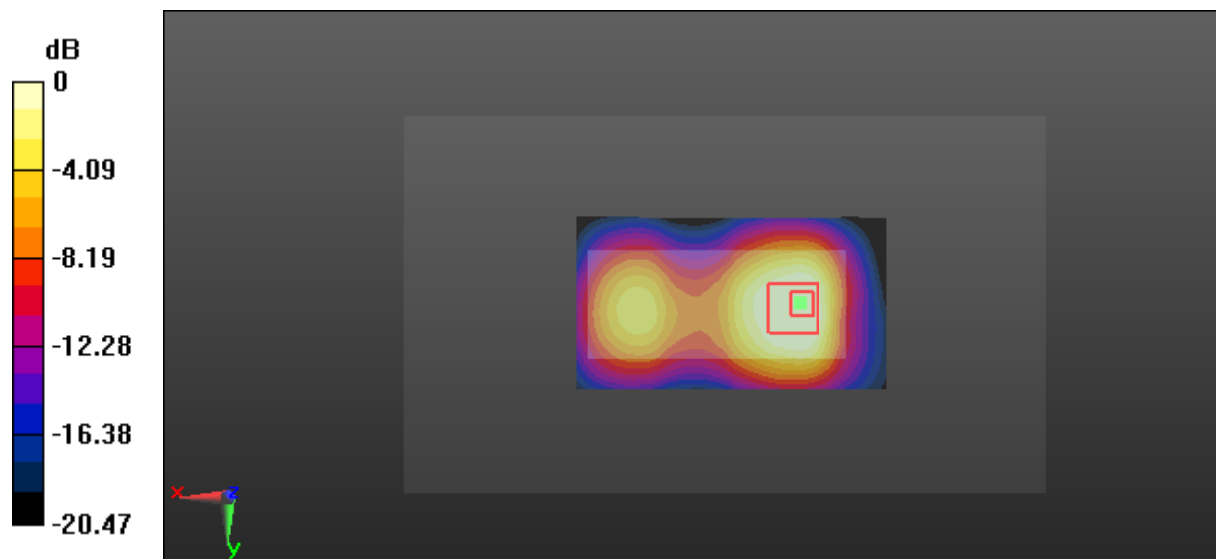
Zoom Scan (5x5x7)/Cube 0: Measurement grid: dx=8mm, dy=8mm, dz=5mm

Reference Value = 15.37 V/m; Power Drift = -0.08 dB

Peak SAR (extrapolated) = 2.60 W/kg

SAR(1 g) = 1.29 W/kg; SAR(10 g) = 0.684 W/kg

Maximum value of SAR (measured) = 1.46 W/kg



0 dB = 1.46 W/kg = 1.64 dBW/kg

Test Plot 26#: GSM 1900_Body Back_High Channel

DUT: Mobile phone; Type: KSHR; Serial: 17021300121

Communication System:GPRS-3 slots; Frequency: 1909.8 MHz;Duty Cycle: 1:2.66
 Medium parameters used: 1909.8 MHz; $\sigma = 1.545$ S/m; $\epsilon_r = 52.654$; $\rho = 1000$ kg/m³ ;
 Phantom section: Left Section

DASY5 Configuration:

- Probe: EX3DV4 - SN7431; ConvF(7.98, 7.98, 7.98); Calibrated: 2016/10/4;
- Sensor-Surface: 1.4mm (Mechanical Surface Detection)
- Electronics: DAE3 Sn379; Calibrated: 2016/10/4
- Phantom: Triple Flat Phantom 5.1C; Type: QD 000 P51 CA; Serial: 1130
- Measurement SW: DASY52, Version 52.8 (8);

Area Scan (91x51x1): Interpolated grid: dx=1.500 mm, dy=1.500 mm

Maximum value of SAR (interpolated) = 2.11 W/kg

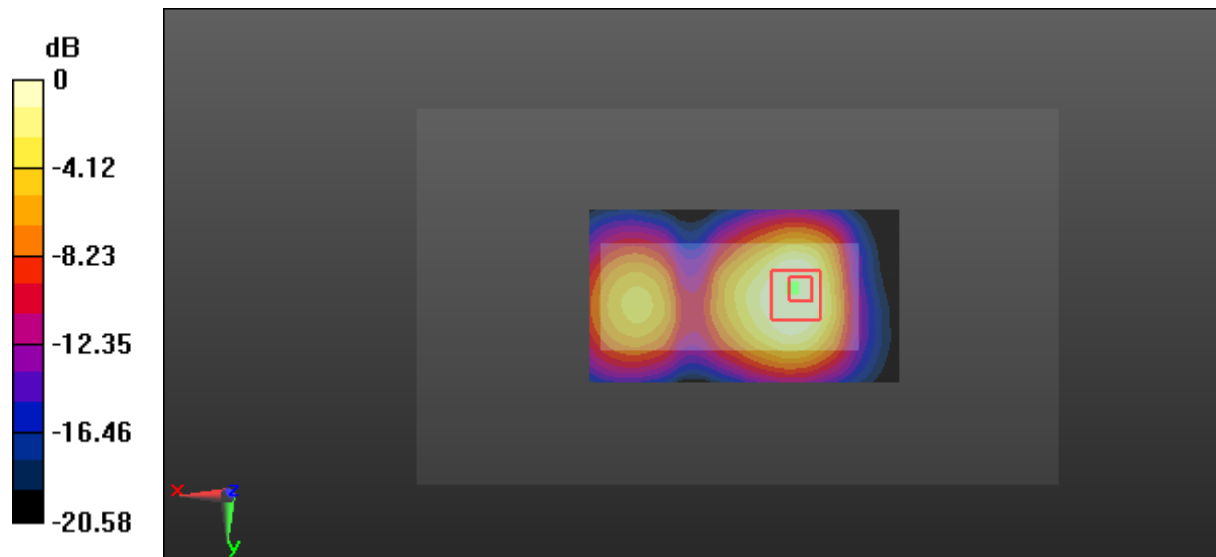
Zoom Scan (5x5x7)/Cube 0: Measurement grid: dx=8mm, dy=8mm, dz=5mm

Reference Value = 15.41 V/m; Power Drift = 0.06 dB

Peak SAR (extrapolated) = 2.61 W/kg

SAR(1 g) = 1.26 W/kg; SAR(10 g) = 0.680 W/kg

Maximum value of SAR (measured) = 1.43 W/kg



0 dB = 1.43 W/kg = 1.55 dBW/kg

Test Plot 27#: WCDMA Band 5_Head Left Cheek_Middle Channel

DUT: Mobile phone; Type: KSHR; Serial: 17021300121

Communication System: WCDMA; Frequency: 836.6 MHz; Duty Cycle: 1:1
 Medium parameters used: 836.6 MHz; $\sigma = 0.925$ S/m; $\epsilon_r = 40.792$; $\rho = 1000$ kg/m³ ;
 Phantom section: Left Section

DASY5 Configuration:

- Probe: EX3DV4 - SN7431; ConvF(9.84, 9.84, 9.84); Calibrated: 2016/10/4;
- Sensor-Surface: 1.4mm (Mechanical Surface Detection)
- Electronics: DAE3 Sn379; Calibrated: 2016/10/4
- Phantom: SAM1; Type: QD000P40CC; Serial: TP:1412
- Measurement SW: DASY52, Version 52.8 (8);

Area Scan (51x91x1): Interpolated grid: dx=1.500 mm, dy=1.500 mm

Maximum value of SAR (interpolated) = 0.731 W/kg

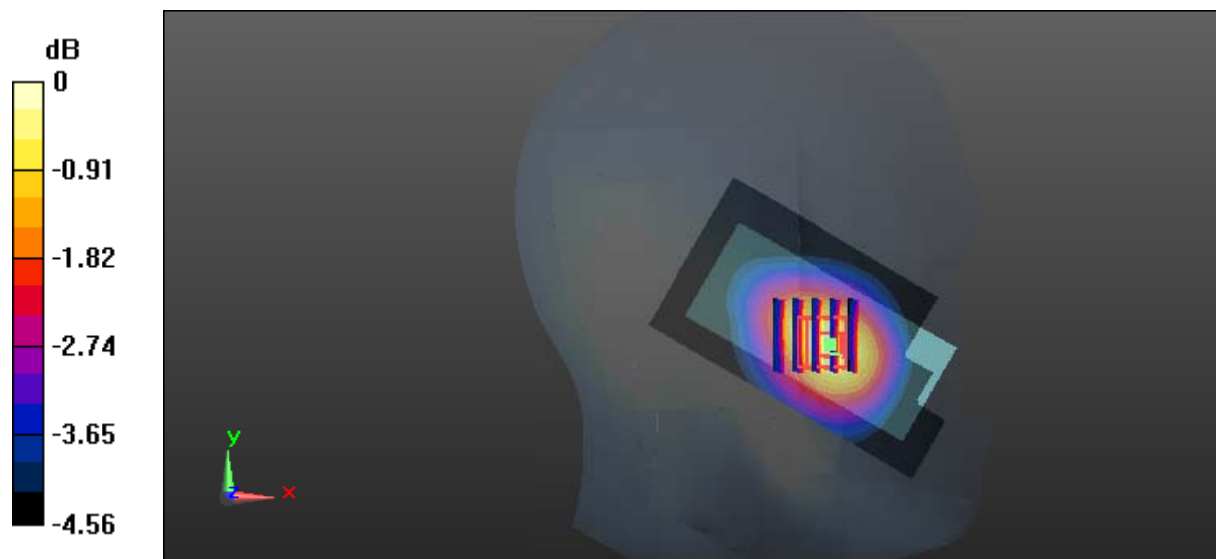
Zoom Scan (5x5x7)/Cube 0: Measurement grid: dx=8mm, dy=8mm, dz=5mm

Reference Value = 17.35 V/m; Power Drift = 0.03 dB

Peak SAR (extrapolated) = 0.826 W/kg

SAR(1 g) = 0.669 W/kg; SAR(10 g) = 0.524 W/kg

Maximum value of SAR (measured) = 0.764 W/kg



0 dB = 0.764 W/kg = -1.17 dBW/kg

Test Plot 28#: WCDMA Band 5_Head Left Tilt_Middle Channel

DUT: Mobile phone; Type: KSHR; Serial: 17021300121

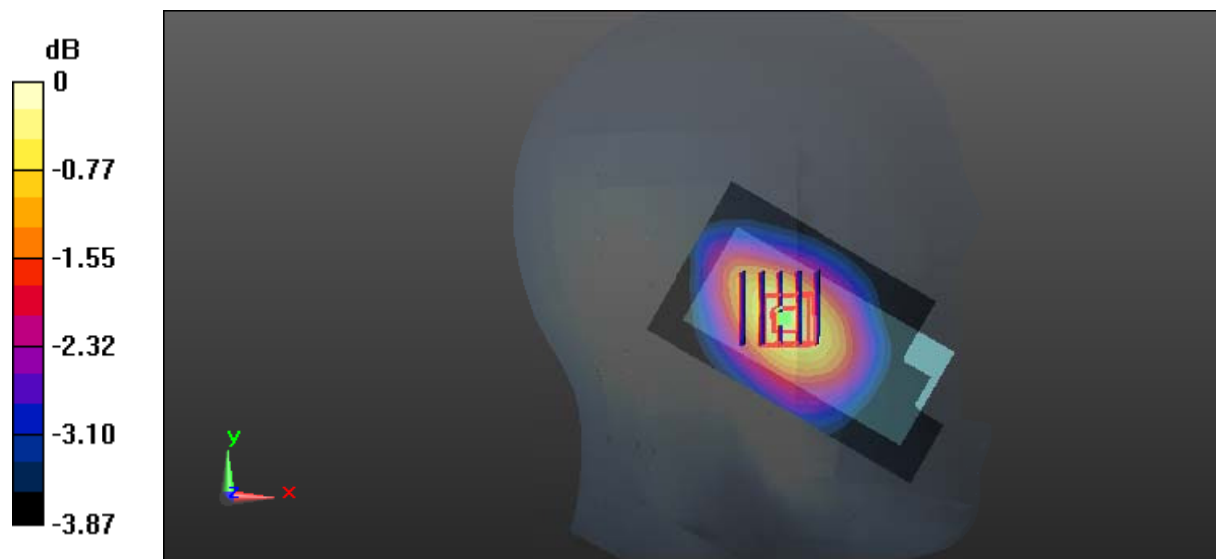
Communication System: WCDMA; Frequency: 836.6 MHz; Duty Cycle: 1:1
 Medium parameters used: 836.6 MHz; $\sigma = 0.925$ S/m; $\epsilon_r = 40.792$; $\rho = 1000$ kg/m³ ;
 Phantom section: Left Section

DASY5 Configuration:

- Probe: EX3DV4 - SN7431; ConvF(9.84, 9.84, 9.84); Calibrated: 2016/10/4;
- Sensor-Surface: 1.4mm (Mechanical Surface Detection)
- Electronics: DAE3 Sn379; Calibrated: 2016/10/4
- Phantom: SAM1; Type: QD000P40CC; Serial: TP:1412
- Measurement SW: DASY52, Version 52.8 (8);

Area Scan (51x91x1): Interpolated grid: dx=1.500 mm, dy=1.500 mm
 Maximum value of SAR (interpolated) = 0.378 W/kg

Zoom Scan (5x5x7)/Cube 0: Measurement grid: dx=8mm, dy=8mm, dz=5mm
 Reference Value = 16.63 V/m; Power Drift = 0.07 dB
 Peak SAR (extrapolated) = 0.425 W/kg
SAR(1 g) = 0.355 W/kg; SAR(10 g) = 0.289 W/kg
 Maximum value of SAR (measured) = 0.400 W/kg



0 dB = 0.400 W/kg = -3.98 dBW/kg

Test Plot 29#: WCDMA Band 5_Head Right Cheek_Low Channel

DUT: Mobile phone; Type: KSHR; Serial: 17021300121

Communication System: WCDMA; Frequency: 826.4 MHz; Duty Cycle: 1:1
 Medium parameters used: 826.4 MHz; $\sigma = 0.913$ S/m; $\epsilon_r = 40.864$; $\rho = 1000$ kg/m³ ;
 Phantom section: Right Section

DASY5 Configuration:

- Probe: EX3DV4 - SN7431; ConvF(9.84, 9.84, 9.84); Calibrated: 2016/10/4;
- Sensor-Surface: 1.4mm (Mechanical Surface Detection)
- Electronics: DAE3 Sn379; Calibrated: 2016/10/4
- Phantom: SAM1; Type: QD000P40CC; Serial: TP:1412
- Measurement SW: DASY52, Version 52.8 (8);

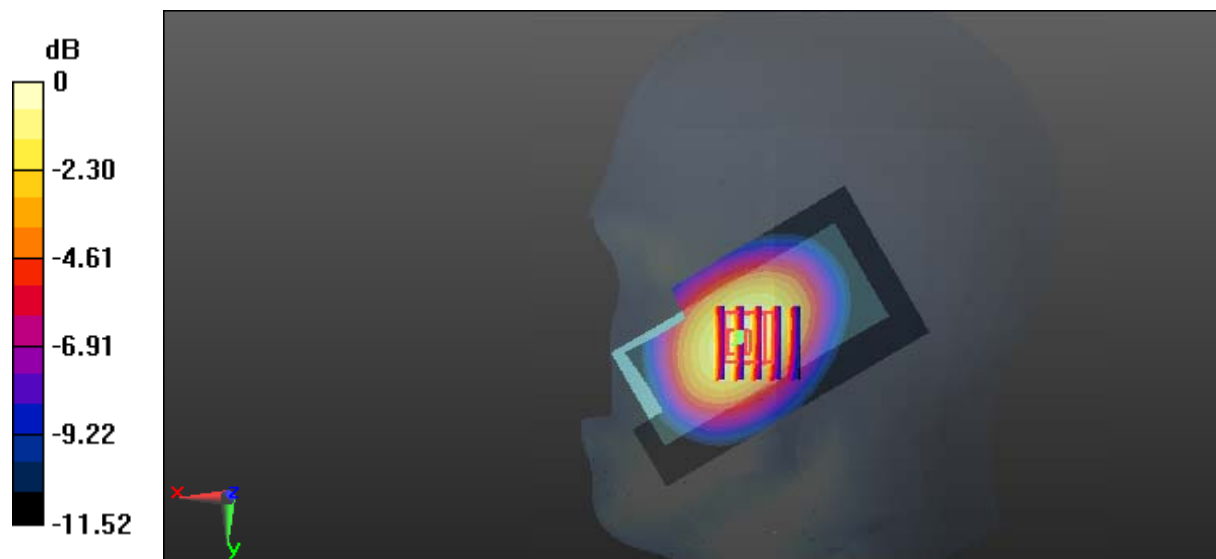
Area Scan (51x91x1): Interpolated grid: dx=1.500 mm, dy=1.500 mm
 Maximum value of SAR (interpolated) = 1.22 W/kg

Zoom Scan (5x5x7)/Cube 0: Measurement grid: dx=8mm, dy=8mm, dz=5mm
 Reference Value = 9.966 V/m; Power Drift = -0.11 dB

Peak SAR (extrapolated) = 1.53 W/kg

SAR(1 g) = 1.06 W/kg; SAR(10 g) = 0.726 W/kg

Maximum value of SAR (measured) = 1.35 W/kg



0 dB = 1.35 W/kg = 1.30 dBW/kg

Test Plot 30#: WCDMA Band 5_Head Right Cheek_Middle Channel**DUT: Mobile phone; Type: KSHR; Serial: 17021300121**

Communication System: WCDMA; Frequency: 836.6 MHz; Duty Cycle: 1:1
Medium parameters used: 836.6 MHz; $\sigma = 0.925$ S/m; $\epsilon_r = 40.792$; $\rho = 1000$ kg/m³;
Phantom section: Right Section

DASY5 Configuration:

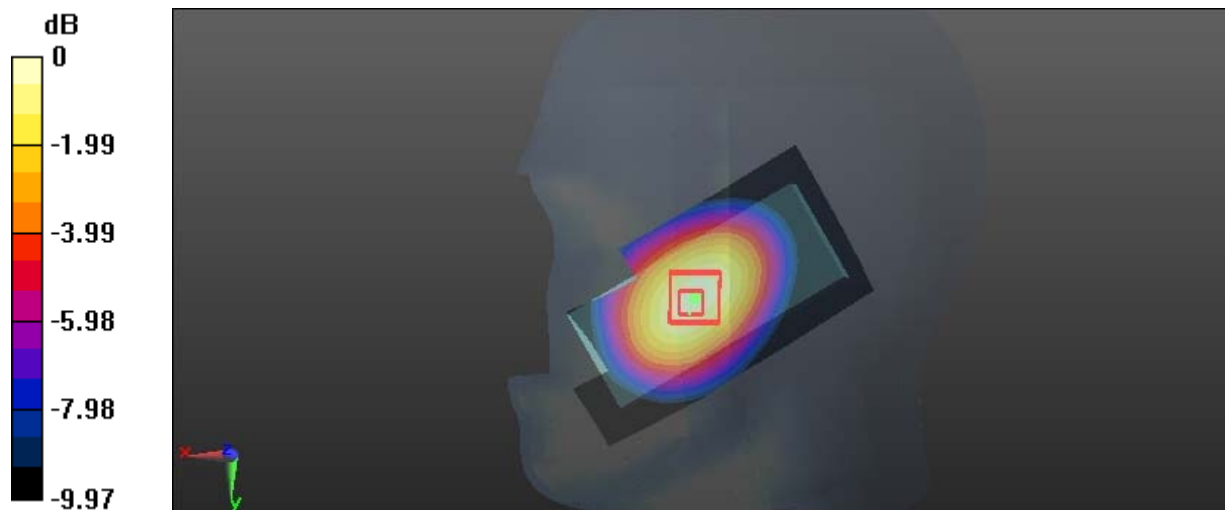
- Probe: EX3DV4 - SN7431; ConvF(9.84, 9.84, 9.84); Calibrated: 2016/10/4;
- Sensor-Surface: 1.4mm (Mechanical Surface Detection)
- Electronics: DAE3 Sn379; Calibrated: 2016/10/4
- Phantom: SAM1; Type: QD000P40CC; Serial: TP:1412
- Measurement SW: DASY52, Version 52.8 (8);

Area Scan (51x91x1): Interpolated grid: dx=1.500 mm, dy=1.500 mm
Maximum value of SAR (interpolated) = 1.06 W/kg

Zoom Scan (5x5x7)/Cube 0: Measurement grid: dx=8mm, dy=8mm, dz=5mm
Reference Value = 9.940 V/m; Power Drift = -0.18 dB
Peak SAR (extrapolated) = 1.22 W/kg

SAR(1 g) = 0.903 W/kg; SAR(10 g) = 0.651 W/kg

Maximum value of SAR (measured) = 1.13 W/kg



0 dB = 1.13 W/kg = 0.53 dBW/kg

Test Plot 31#: WCDMA Band 5_Head Right Cheek_High Channel**DUT: Mobile phone; Type: KSHR; Serial: 17021300121**

Communication System: WCDMA; Frequency: 846.6 MHz; Duty Cycle: 1:1
Medium parameters used: 846.6 MHz; $\sigma = 0.931$ S/m; $\epsilon_r = 40.731$; $\rho = 1000$ kg/m³;
Phantom section: Right Section

DASY5 Configuration:

- Probe: EX3DV4 - SN7431; ConvF(9.84, 9.84, 9.84); Calibrated: 2016/10/4;
- Sensor-Surface: 1.4mm (Mechanical Surface Detection)
- Electronics: DAE3 Sn379; Calibrated: 2016/10/4
- Phantom: SAM1; Type: QD000P40CC; Serial: TP:1412
- Measurement SW: DASY52, Version 52.8 (8);

Area Scan (51x91x1): Interpolated grid: dx=1.500 mm, dy=1.500 mm

Maximum value of SAR (interpolated) = 0.988 W/kg

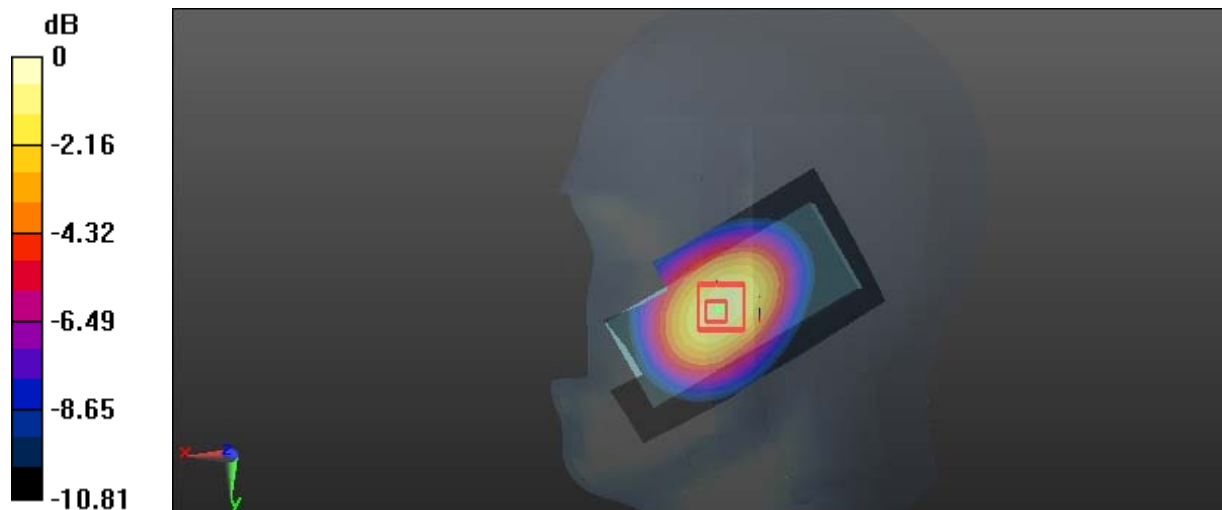
Zoom Scan (5x5x7)/Cube 0: Measurement grid: dx=8mm, dy=8mm, dz=5mm

Reference Value = 8.448 V/m; Power Drift = 0.01 dB

Peak SAR (extrapolated) = 1.33 W/kg

SAR(1 g) = 0.914 W/kg; SAR(10 g) = 0.630 W/kg

Maximum value of SAR (measured) = 1.18 W/kg



0 dB = 1.18 W/kg = 0.72 dBW/kg

Test Plot 32#: WCDMA Band 5_Head Right Tilt_Middle Channel**DUT: Mobile phone; Type: KSHR; Serial: 17021300121**

Communication System: WCDMA; Frequency: 836.6 MHz; Duty Cycle: 1:1
Medium parameters used: 836.6 MHz; $\sigma = 0.925$ S/m; $\epsilon_r = 40.792$; $\rho = 1000$ kg/m³ ;
Phantom section: Right Section

DASY5 Configuration:

- Probe: EX3DV4 - SN7431; ConvF(9.84, 9.84, 9.84); Calibrated: 2016/10/4;
- Sensor-Surface: 1.4mm (Mechanical Surface Detection)
- Electronics: DAE3 Sn379; Calibrated: 2016/10/4
- Phantom: SAM1; Type: QD000P40CC; Serial: TP:1412
- Measurement SW: DASY52, Version 52.8 (8);

Area Scan (51x91x1): Interpolated grid: dx=1.500 mm, dy=1.500 mm

Maximum value of SAR (interpolated) = 0.413 W/kg

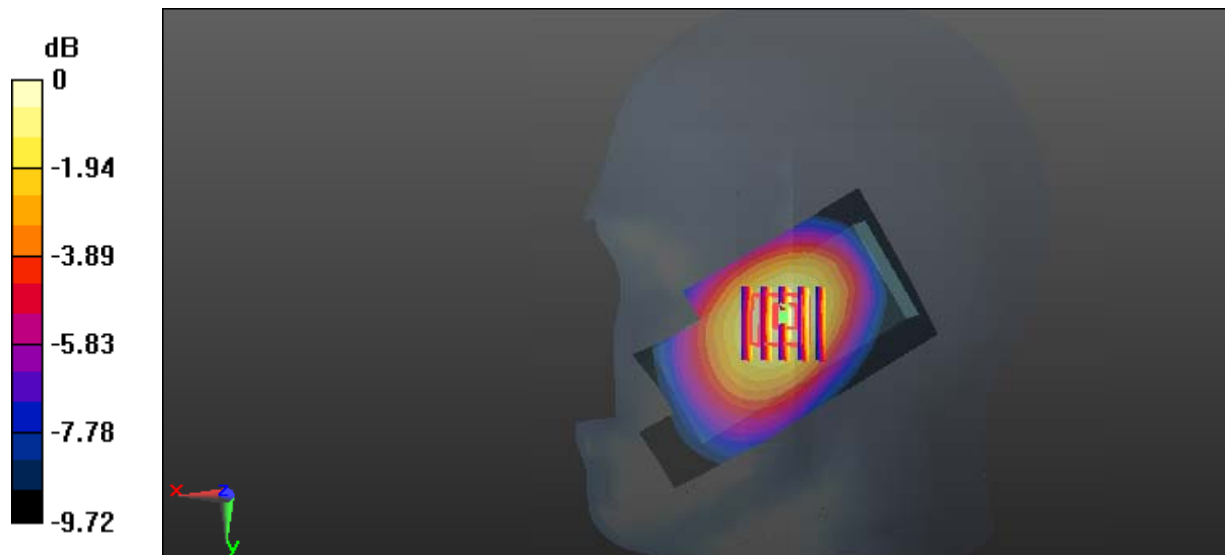
Zoom Scan (5x5x7)/Cube 0: Measurement grid: dx=8mm, dy=8mm, dz=5mm

Reference Value = 10.38 V/m; Power Drift = -0.01 dB

Peak SAR (extrapolated) = 0.500 W/kg

SAR(1 g) = 0.388 W/kg; SAR(10 g) = 0.279 W/kg

Maximum value of SAR (measured) = 0.462 W/kg



0 dB = 0.462 W/kg = -3.35 dBW/kg

Test Plot 33#: WCDMA Band 5_Body Back_Low Channel

DUT: Mobile phone; Type: KSHR; Serial: 17021300121

Communication System: WCDMA; Frequency: 826.4 MHz; Duty Cycle: 1:1
 Medium parameters used: 826.4 MHz; $\sigma = 0.965$ S/m; $\epsilon_r = 54.964$; $\rho = 1000$ kg/m³ ;
 Phantom section: Right Section

DASY5 Configuration:

- Probe: EX3DV4 - SN7431; ConvF(9.89, 9.89, 9.89); Calibrated: 2016/10/4;
- Sensor-Surface: 1.4mm (Mechanical Surface Detection)
- Electronics: DAE3 Sn379; Calibrated: 2016/10/4
- Phantom: Triple Flat Phantom 5.1C; Type: QD 000 P51 CA; Serial: 1130
- Measurement SW: DASY52, Version 52.8 (8);

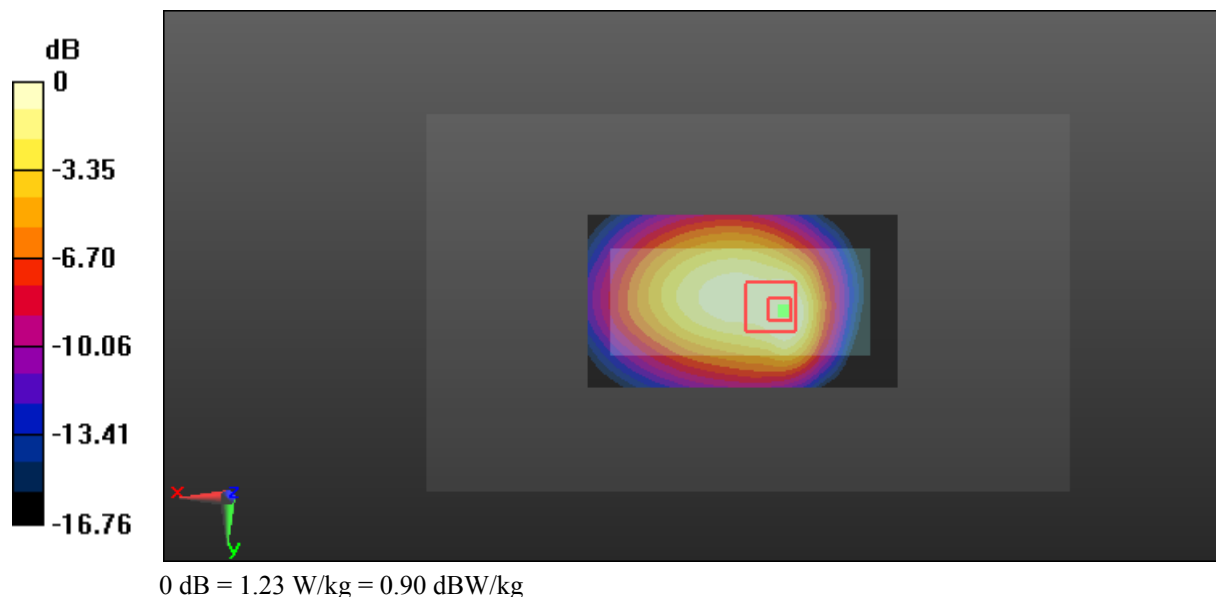
Area Scan (91x51x1): Interpolated grid: dx=1.500 mm, dy=1.500 mm
 Maximum value of SAR (interpolated) = 1.55 W/kg

Zoom Scan (5x5x7)/Cube 0: Measurement grid: dx=8mm, dy=8mm, dz=5mm
 Reference Value = 32.30 V/m; Power Drift = -0.04 dB

Peak SAR (extrapolated) = 1.52 W/kg

SAR(1 g) = 0.898 W/kg; SAR(10 g) = 0.607 W/kg

Maximum value of SAR (measured) = 1.23 W/kg



Test Plot 34#: WCDMA Band 5_Body Back_Middle Channel

DUT: Mobile phone; Type: KSHR; Serial: 17021300121

Communication System: WCDMA; Frequency: 836.6 MHz; Duty Cycle: 1:1
 Medium parameters used: 836.6 MHz; $\sigma = 0.987$ S/m; $\epsilon_r = 54.676$; $\rho = 1000$ kg/m³ ;
 Phantom section: Right Section

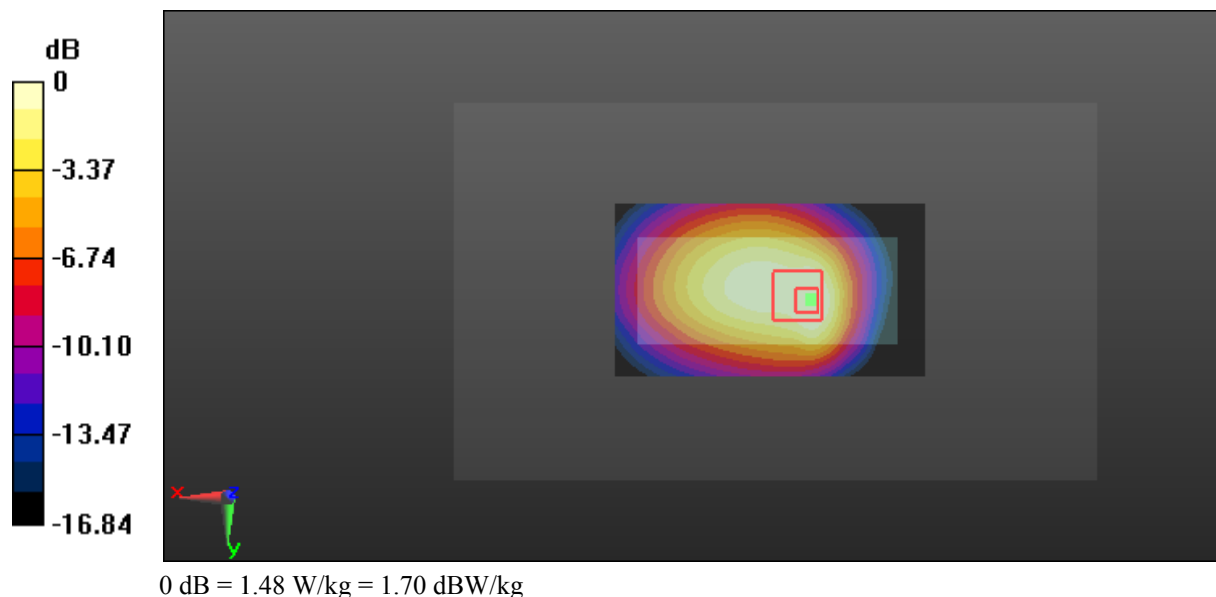
DASY5 Configuration:

- Probe: EX3DV4 - SN7431; ConvF(9.89, 9.89, 9.89); Calibrated: 2016/10/4;
- Sensor-Surface: 1.4mm (Mechanical Surface Detection)
- Electronics: DAE3 Sn379; Calibrated: 2016/10/4
- Phantom: Triple Flat Phantom 5.1C; Type: QD 000 P51 CA; Serial: 1130
- Measurement SW: DASY52, Version 52.8 (8);

Area Scan (91x51x1): Interpolated grid: dx=1.500 mm, dy=1.500 mm
 Maximum value of SAR (interpolated) = 1.85 W/kg

Zoom Scan (5x5x7)/Cube 0: Measurement grid: dx=8mm, dy=8mm, dz=5mm
 Reference Value = 35.67 V/m; Power Drift = -0.09 dB
 Peak SAR (extrapolated) = 1.82 W/kg

SAR(1 g) = 1.08 W/kg; SAR(10 g) = 0.727 W/kg
 Maximum value of SAR (measured) = 1.48 W/kg



Test Plot 35#: WCDMA Band 5_Body Back_High Channel

DUT: Mobile phone; Type: KSHR; Serial: 17021300121

Communication System: WCDMA; Frequency: 846.6 MHz; Duty Cycle: 1:1
 Medium parameters used: 846.6 MHz; $\sigma = 0.991$ S/m; $\epsilon_r = 54.477$; $\rho = 1000$ kg/m³ ;
 Phantom section: Right Section

DASY5 Configuration:

- Probe: EX3DV4 - SN7431; ConvF(9.89, 9.89, 9.89); Calibrated: 2016/10/4;
- Sensor-Surface: 1.4mm (Mechanical Surface Detection)
- Electronics: DAE3 Sn379; Calibrated: 2016/10/4
- Phantom: Triple Flat Phantom 5.1C; Type: QD 000 P51 CA; Serial: 1130
- Measurement SW: DASY52, Version 52.8 (8);

Area Scan (91x51x1): Interpolated grid: dx=1.500 mm, dy=1.500 mm

Maximum value of SAR (interpolated) = 1.49 W/kg

Zoom Scan (5x5x7)/Cube 0: Measurement grid: dx=8mm, dy=8mm, dz=5mm

Reference Value = 32.66 V/m; Power Drift = -0.01 dB

Peak SAR (extrapolated) = 1.67 W/kg

SAR(1 g) = 0.934 W/kg; SAR(10 g) = 0.638 W/kg

Maximum value of SAR (measured) = 1.32 W/kg

