



REPORT No.: SZ22100114S01

## Annex D Plots of Maximum SAR Test Results

## GSM850\_GPRS(2 TX slots)\_Right Cheek\_Ch189

Communication System: UID 0, GSM850(class 10) (0); Frequency: 836.4 MHz; Duty Cycle: 1:4.15  
Medium: HSL\_900 Medium parameters used:  $f = 836.4$  MHz;  $\sigma = 0.958$  S/m;  $\epsilon_r = 40.843$ ;  $\rho = 1000$  kg/m<sup>3</sup>

Ambient Temperature : 23.2 °C; Liquid Temperature : 22.2 °C

### DASY5 Configuration:

- Probe: EX3DV4 - SN7608; ConvF(9.81, 9.81, 9.81) @ 836.4 MHz; Calibrated: 2022.01.12
- Sensor-Surface: 2mm (Mechanical Surface Detection)
- Electronics: DAE4 Sn1643; Calibrated: 2021.12.30
- Phantom: Twin-SAM; Type: QD 000 P41 Ax; Serial: 2020
- Measurement SW: DASY52, Version 52.10 (4); SEMCAD X Version 14.6.14 (7483)

**Ch189/Area Scan (71x101x1):** Interpolated grid: dx=1.500 mm, dy=1.500 mm

Maximum value of SAR (interpolated) = 0.135 W/kg

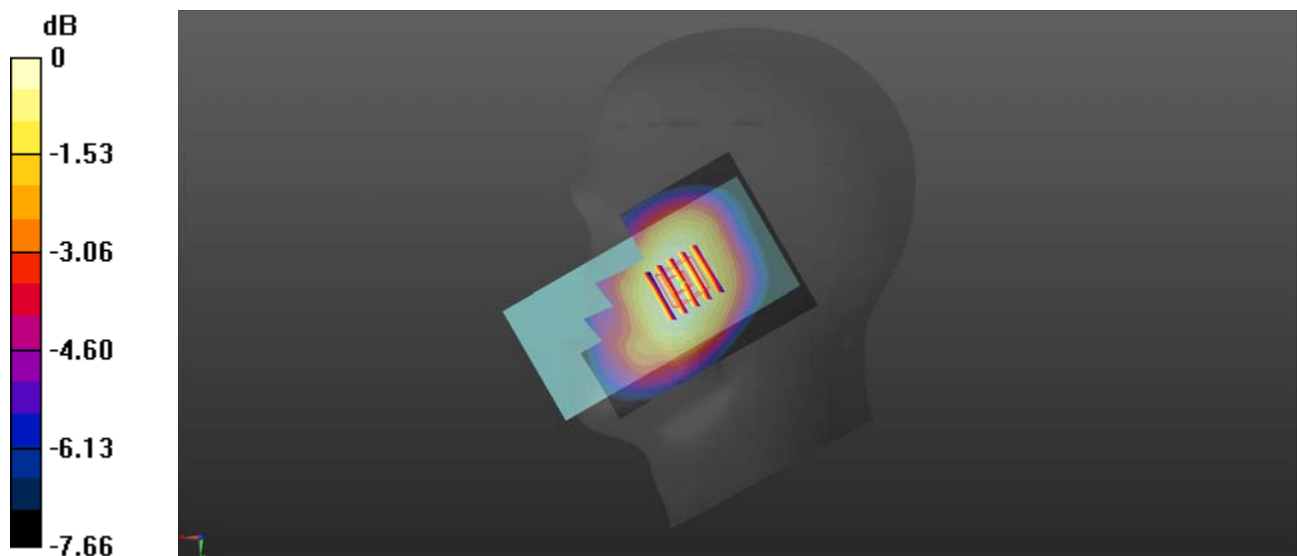
**Ch189/Zoom Scan (5x5x7)/Cube 0:** Measurement grid: dx=8mm, dy=8mm, dz=5mm

Reference Value = 4.159 V/m; Power Drift = 0.05 dB

Peak SAR (extrapolated) = 0.139 W/kg

**SAR(1 g) = 0.117 W/kg; SAR(10 g) = 0.094 W/kg**

Maximum value of SAR (measured) = 0.130 W/kg



0 dB = 0.130 W/kg

## GSM1900\_GPRS(2 TX slots)\_Right Cheek\_Ch661

Communication System: UID 0, GSM1900(Class 10) (0); Frequency: 1880 MHz; Duty Cycle: 1:4.15  
Medium: HSL\_2000 Medium parameters used:  $f = 1880$  MHz;  $\sigma = 1.321$  S/m;  $\epsilon_r = 39.882$ ;  $\rho = 1000$  kg/m<sup>3</sup>

Ambient Temperature : 23.2 °C; Liquid Temperature : 22.1 °C

### DASY5 Configuration:

- Probe: EX3DV4 - SN7608; ConvF(7.99, 7.99, 7.99) @ 1880 MHz; Calibrated: 2022.01.12
- Sensor-Surface: 2mm (Mechanical Surface Detection)
- Electronics: DAE4 Sn1643; Calibrated: 2021.12.30
- Phantom: Twin-SAM; Type: QD 000 P41 Ax; Serial: 2020
- Measurement SW: DASY52, Version 52.10 (4); SEMCAD X Version 14.6.14 (7483)

**Ch661/Area Scan (71x101x1):** Interpolated grid: dx=1.500 mm, dy=1.500 mm

Maximum value of SAR (interpolated) = 0.0957 W/kg

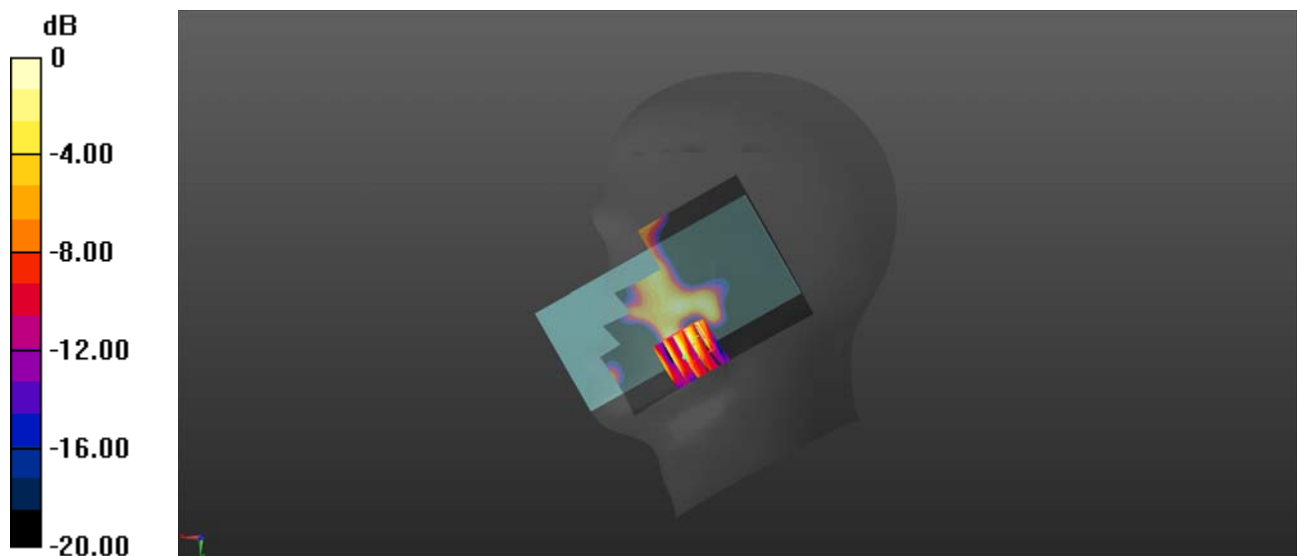
**Ch661/Zoom Scan (5x5x7)/Cube 0:** Measurement grid: dx=8mm, dy=8mm, dz=5mm

Reference Value = 0 V/m; Power Drift = 0.02 dB

Peak SAR (extrapolated) = 0.190 W/kg

**SAR(1 g) = 0.048 W/kg; SAR(10 g) = 0.029 W/kg**

Maximum value of SAR (measured) = 0.0902 W/kg



0 dB = 0.0902 W/kg

## WCDMA Band II\_RMC 12.2Kbps\_Right Cheek\_Ch9400

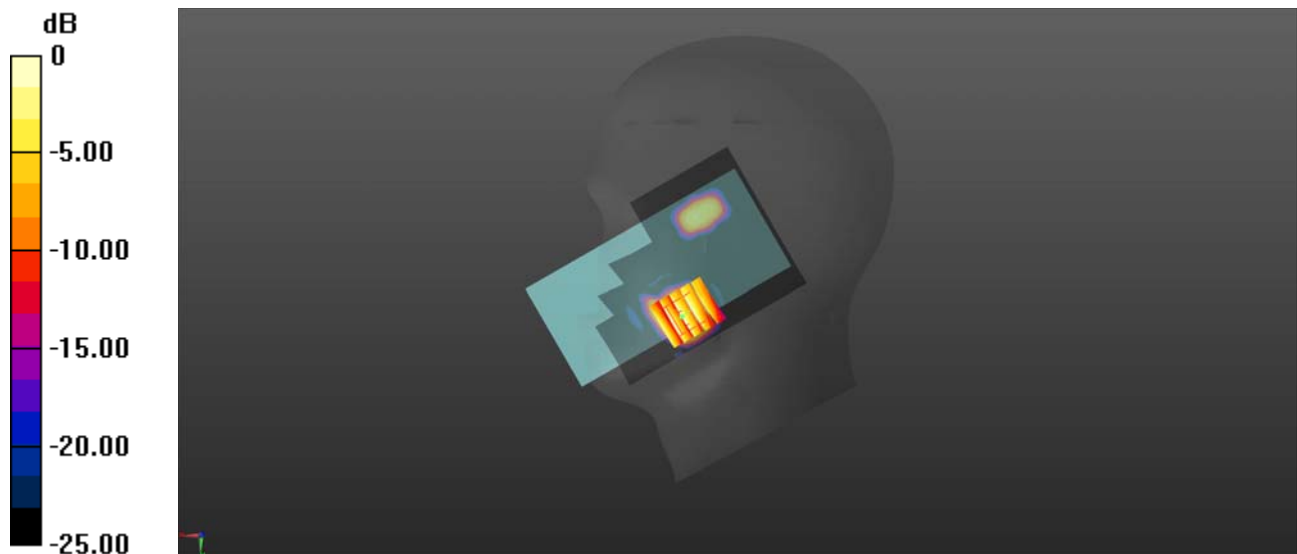
Communication System: UID 0, UMTS-FDD (0); Frequency: 1880 MHz; Duty Cycle: 1:1  
Medium: HSL\_2000 Medium parameters used:  $f = 1880$  MHz;  $\sigma = 1.321$  S/m;  $\epsilon_r = 39.882$ ;  $\rho = 1000$  kg/m<sup>3</sup>  
Ambient Temperature : 23.2 °C; Liquid Temperature : 22.1 °C

### DASY5 Configuration:

- Probe: EX3DV4 - SN7608; ConvF(7.99, 7.99, 7.99) @ 1880 MHz; Calibrated: 2022.01.12
- Sensor-Surface: 2mm (Mechanical Surface Detection)
- Electronics: DAE4 Sn1643; Calibrated: 2021.12.30
- Phantom: Twin-SAM; Type: QD 000 P41 Ax; Serial: 2020
- Measurement SW: DASY52, Version 52.10 (4); SEMCAD X Version 14.6.14 (7483)

**Ch9400/Area Scan (71x101x1):** Interpolated grid: dx=1.500 mm, dy=1.500 mm  
Maximum value of SAR (interpolated) = 0.0240 W/kg

**Ch9400/Zoom Scan (5x5x7)/Cube 0:** Measurement grid: dx=8mm, dy=8mm, dz=5mm  
Reference Value = 1.389 V/m; Power Drift = 0.07 dB  
Peak SAR (extrapolated) = 0.0200 W/kg  
**SAR(1 g) = 0.077 W/kg; SAR(10 g) = 0.047 W/kg**  
Maximum value of SAR (measured) = 0.0156 W/kg



0 dB = 0.0156 W/kg

## WCDMA Band IV\_RMC 12.2Kbps\_Right Cheek\_Ch1413

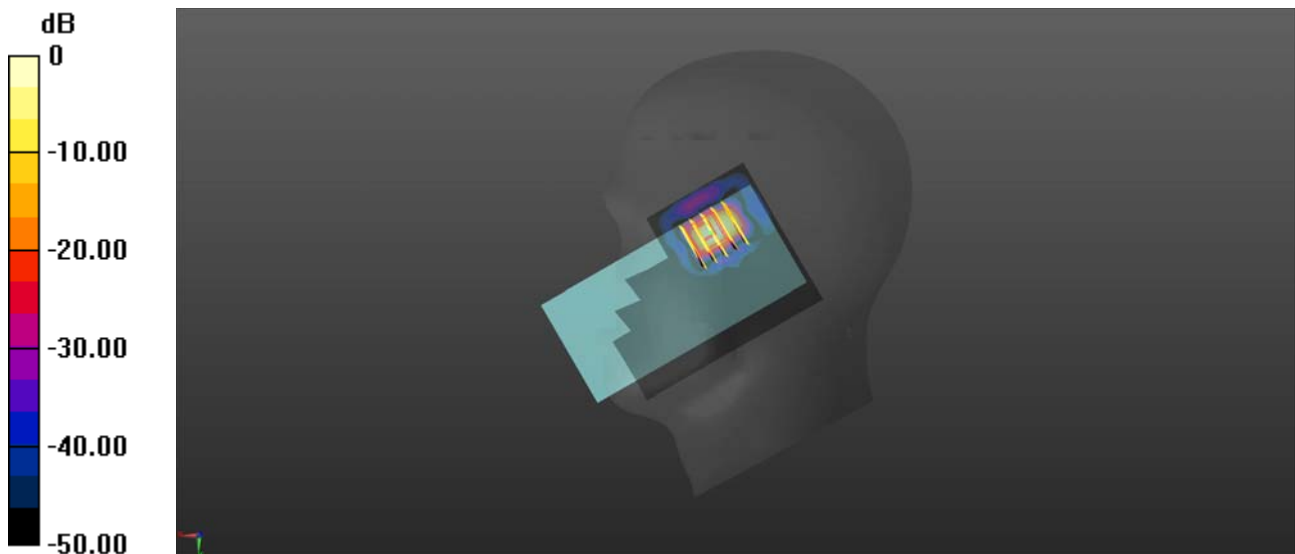
Communication System: UID 0, UMTS-FDD (0); Frequency: 1732.6 MHz; Duty Cycle: 1:1  
Medium: HSL\_1800 Medium parameters used:  $f = 1733$  MHz;  $\sigma = 1.366$  S/m;  $\epsilon_r = 41.367$ ;  $\rho = 1000$  kg/m<sup>3</sup>  
Ambient Temperature : 23.2 °C; Liquid Temperature : 22.1 °C

### DASY5 Configuration:

- Probe: EX3DV4 - SN7608; ConvF(8.26, 8.26, 8.26) @ 1732.6 MHz; Calibrated: 2022.01.12
- Sensor-Surface: 2mm (Mechanical Surface Detection)
- Electronics: DAE4 Sn1643; Calibrated: 2021.12.30
- Phantom: Twin-SAM; Type: QD 000 P41 Ax; Serial: 2020
- Measurement SW: DASY52, Version 52.10 (4); SEMCAD X Version 14.6.14 (7483)

**Ch1413/Area Scan (71x101x1):** Interpolated grid: dx=1.500 mm, dy=1.500 mm  
Maximum value of SAR (interpolated) = 0.0798 W/kg

**Ch1413/Zoom Scan (5x5x7)/Cube 0:** Measurement grid: dx=8mm, dy=8mm, dz=5mm  
Reference Value = 0 V/m; Power Drift = 0.05 dB  
Peak SAR (extrapolated) = 0.200 W/kg  
**SAR(1 g) = 0.057 W/kg; SAR(10 g) = 0.036 W/kg**  
Maximum value of SAR (measured) = 0.00727 W/kg



0 dB = 0.0727 W/kg

## WCDMA Band V\_RMC 12.2Kbps\_Right Cheek\_Ch4182

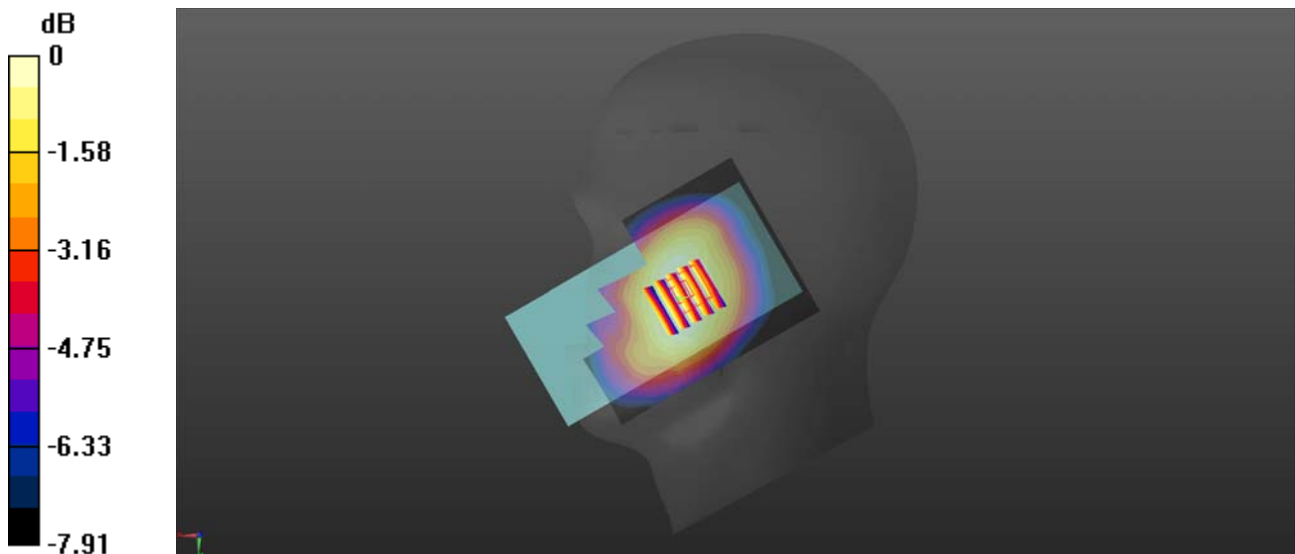
Communication System: UID 0, UMTS-FDD (0); Frequency: 836.4 MHz; Duty Cycle: 1:1  
Medium: HSL\_900 Medium parameters used:  $f = 836.4$  MHz;  $\sigma = 0.958$  S/m;  $\epsilon_r = 40.843$ ;  $\rho = 1000$  kg/m<sup>3</sup>  
Ambient Temperature : 23.2 °C; Liquid Temperature : 22.2 °C

### DASY5 Configuration:

- Probe: EX3DV4 - SN7608; ConvF(9.81, 9.81, 9.81) @ 836.4 MHz; Calibrated: 2022.01.12
- Sensor-Surface: 2mm (Mechanical Surface Detection)
- Electronics: DAE4 Sn1643; Calibrated: 2021.12.30
- Phantom: Twin-SAM; Type: QD 000 P41 Ax; Serial: 2020
- Measurement SW: DASY52, Version 52.10 (4); SEMCAD X Version 14.6.14 (7483)

**Ch4182/Area Scan (71x101x1):** Interpolated grid: dx=1.500 mm, dy=1.500 mm  
Maximum value of SAR (interpolated) = 0.114 W/kg

**Ch4182/Zoom Scan (5x5x7)/Cube 0:** Measurement grid: dx=8mm, dy=8mm, dz=5mm  
Reference Value = 3.634 V/m; Power Drift = 0.02 dB  
Peak SAR (extrapolated) = 0.120 W/kg  
**SAR(1 g) = 0.099 W/kg; SAR(10 g) = 0.080 W/kg**  
Maximum value of SAR (measured) = 0.111 W/kg



0 dB = 0.111 W/kg

## LTE Band 2\_20MHz\_QPSK\_1RB\_0Offset\_Right Cheek\_Ch18900

Communication System: UID 0, LTE (0); Frequency: 1880 MHz; Duty Cycle: 1:1

Medium: HSL\_2000 Medium parameters used:  $f = 1880$  MHz;  $\sigma = 1.321$  S/m;  $\epsilon_r = 39.882$ ;  $\rho = 1000$  kg/m<sup>3</sup>

Ambient Temperature : 23.2 °C; Liquid Temperature : 22.1 °C

DASY5 Configuration:

- Probe: EX3DV4 - SN7608; ConvF(7.99, 7.99, 7.99) @ 1880 MHz; Calibrated: 2022.01.12
- Sensor-Surface: 2mm (Mechanical Surface Detection)
- Electronics: DAE4 Sn1643; Calibrated: 2021.12.30
- Phantom: Twin-SAM; Type: QD 000 P41 Ax; Serial: 2020
- Measurement SW: DASY52, Version 52.10 (4); SEMCAD X Version 14.6.14 (7483)

**Ch18900/Area Scan (71x101x1):** Interpolated grid: dx=1.500 mm, dy=1.500 mm

Maximum value of SAR (interpolated) = 0.621 W/kg

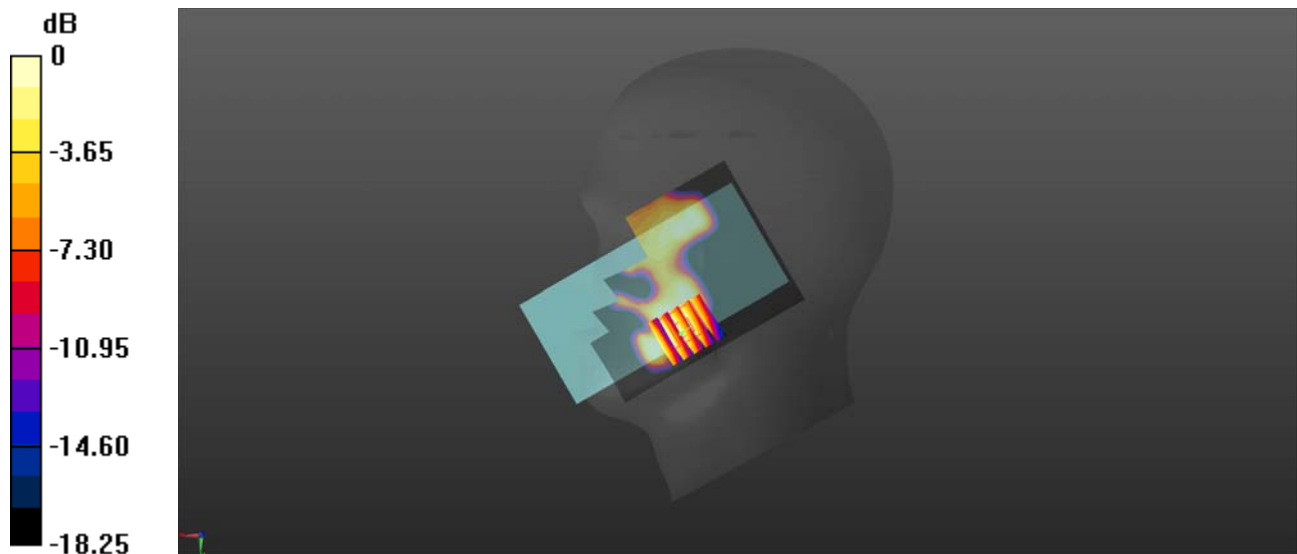
**Ch18900/Zoom Scan (5x5x7)/Cube 0:** Measurement grid: dx=8mm, dy=8mm, dz=5mm

Reference Value = 0 V/m; Power Drift = 0.09 dB

Peak SAR (extrapolated) = 0.260 W/kg

**SAR(1 g) = 0.087 W/kg; SAR(10 g) = 0.057 W/kg**

Maximum value of SAR (measured) = 0.211 W/kg



0 dB = 0.211 W/kg

## LTE Band 5\_10MHz\_QPSK\_1RB\_0Offset\_Right Cheek\_Ch20525

Communication System: UID 0, LTE (0); Frequency: 836.5 MHz; Duty Cycle: 1:1

Medium: HSL\_900 Medium parameters used:  $f = 836.5$  MHz;  $\sigma = 0.958$  S/m;  $\epsilon_r = 40.846$ ;  $\rho = 1000$  kg/m<sup>3</sup>

Ambient Temperature : 23.2 °C; Liquid Temperature : 22.2 °C

DASY5 Configuration:

- Probe: EX3DV4 - SN7608; ConvF(9.81, 9.81, 9.81) @ 836.5 MHz; Calibrated: 2022.01.12
- Sensor-Surface: 2mm (Mechanical Surface Detection)
- Electronics: DAE4 Sn1643; Calibrated: 2021.12.30
- Phantom: Twin-SAM; Type: QD 000 P41 Ax; Serial: 2020
- Measurement SW: DASY52, Version 52.10 (4); SEMCAD X Version 14.6.14 (7483)

**Ch20525/Area Scan (71x101x1):** Interpolated grid: dx=1.500 mm, dy=1.500 mm

Maximum value of SAR (interpolated) = 0.125 W/kg

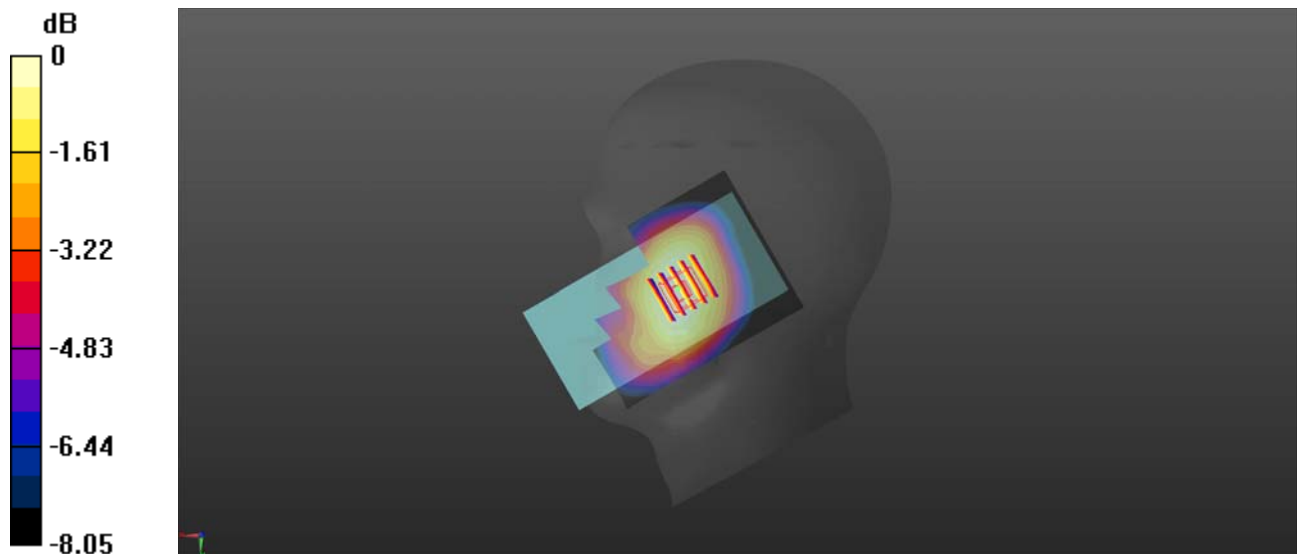
**Ch20525/Zoom Scan (5x5x7)/Cube 0:** Measurement grid: dx=8mm, dy=8mm, dz=5mm

Reference Value = 2.565 V/m; Power Drift = 0.02 dB

Peak SAR (extrapolated) = 0.135 W/kg

**SAR(1 g) = 0.110 W/kg; SAR(10 g) = 0.088 W/kg**

Maximum value of SAR (measured) = 0.124 W/kg



0 dB = 0.124 W/kg



## LTE Band 7\_20MHz\_QPSK\_1RB\_0Offset\_Right Cheek\_Ch21100

Communication System: UID 0, LTE (0); Frequency: 2535 MHz; Duty Cycle: 1:1

Medium: HSL\_2600 Medium parameters used:  $f = 2535$  MHz;  $\sigma = 1.911$  S/m;  $\epsilon_r = 38.489$ ;  $\rho = 1000$  kg/m<sup>3</sup>

Ambient Temperature : 23.2 °C; Liquid Temperature : 22.4 °C

DASY5 Configuration:

- Probe: EX3DV4 - SN7608; ConvF(7.42, 7.42, 7.42) @ 2535 MHz; Calibrated: 2022.01.12
- Sensor-Surface: 2mm (Mechanical Surface Detection)
- Electronics: DAE4 Sn1643; Calibrated: 2021.12.30
- Phantom: Twin-SAM; Type: QD 000 P41 Ax; Serial: 2020
- Measurement SW: DASY52, Version 52.10 (4); SEMCAD X Version 14.6.14 (7483)

**Ch21100/Area Scan (81x131x1):** Interpolated grid: dx=1.200 mm, dy=1.200 mm

Maximum value of SAR (interpolated) = 0.137 W/kg

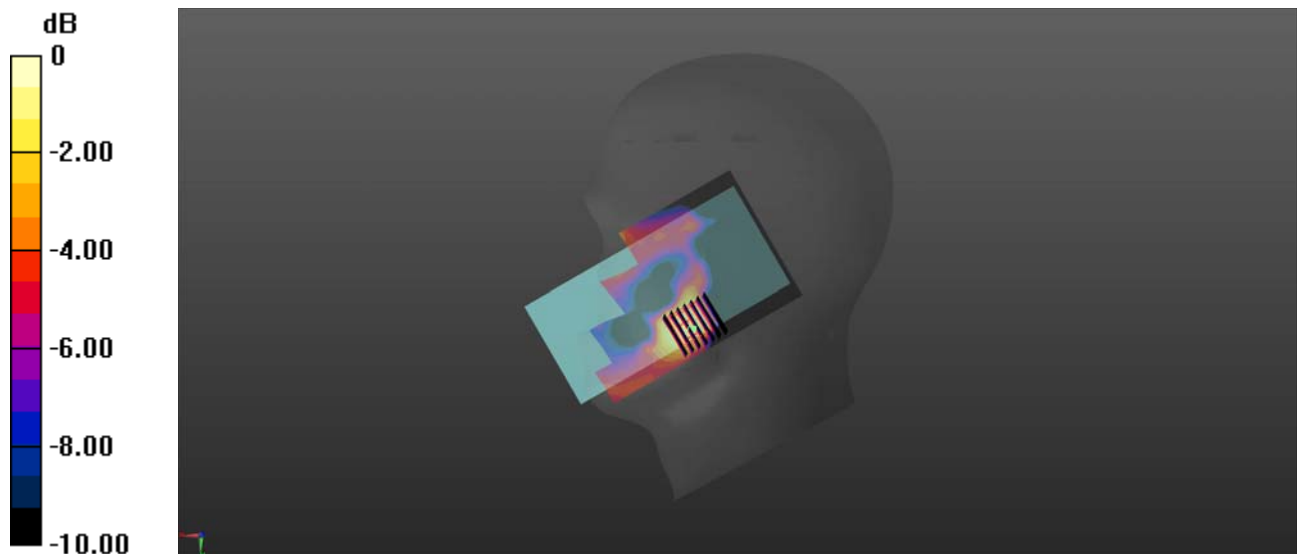
**Ch21100/Zoom Scan (7x7x7)/Cube 0:** Measurement grid: dx=5mm, dy=5mm, dz=5mm

Reference Value = 0 V/m; Power Drift = 0.06 dB

Peak SAR (extrapolated) = 0.138 W/kg

**SAR(1 g) = 0.079 W/kg; SAR(10 g) = 0.044 W/kg**

Maximum value of SAR (measured) = 0.109 W/kg



0 dB = 0.109 W/kg

## LTE Band 12\_10MHz\_QPSK\_1RB\_0Offset\_Right Cheek\_Ch23095

Communication System: UID 0, LTE (0); Frequency: 707.5 MHz; Duty Cycle: 1:1

Medium: HSL\_750 Medium parameters used:  $f = 707.5$  MHz;  $\sigma = 0.891$  S/m;  $\epsilon_r = 40.871$ ;  $\rho = 1000$  kg/m<sup>3</sup>

Ambient Temperature : 23.2 °C; Liquid Temperature : 22.3 °C

DASY5 Configuration:

- Probe: EX3DV4 - SN7608; ConvF(10.2, 10.2, 10.2) @ 707.5 MHz; Calibrated: 2022.01.12
- Sensor-Surface: 2mm (Mechanical Surface Detection)
- Electronics: DAE4 Sn1643; Calibrated: 2021.12.30
- Phantom: Twin-SAM; Type: QD 000 P41 Ax; Serial: 2020
- Measurement SW: DASY52, Version 52.10 (4); SEMCAD X Version 14.6.14 (7483)

**Ch23095/Area Scan (71x101x1):** Interpolated grid: dx=1.500 mm, dy=1.500 mm

Maximum value of SAR (interpolated) = 0.0164 W/kg

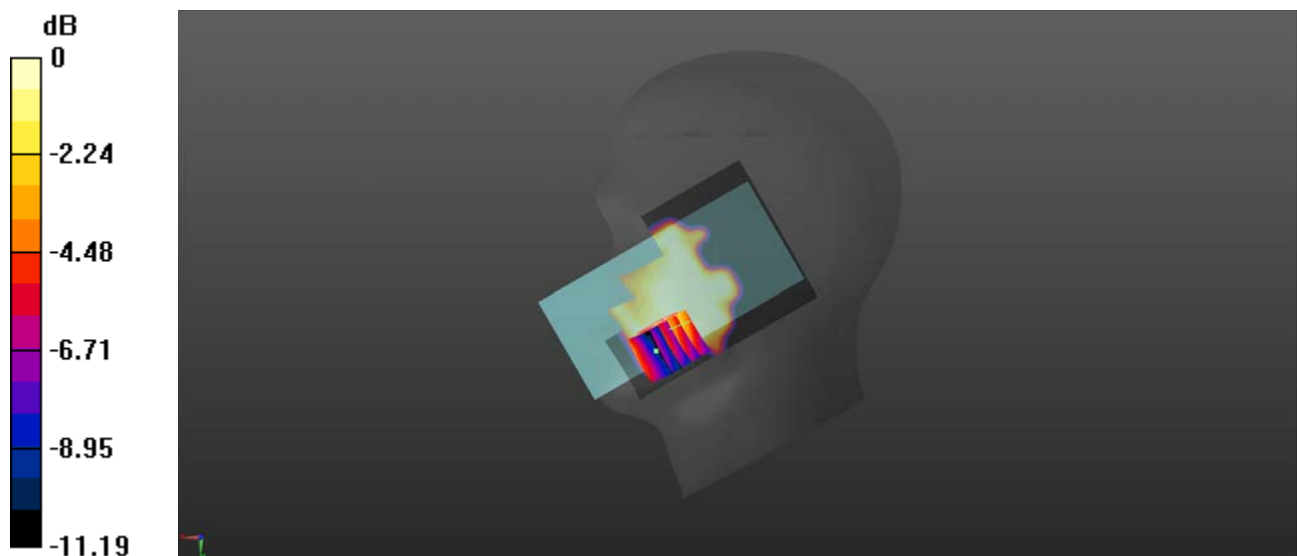
**Ch23095/Zoom Scan (5x5x7)/Cube 0:** Measurement grid: dx=8mm, dy=8mm, dz=5mm

Reference Value = 0 V/m; Power Drift = 0.03 dB

Peak SAR (extrapolated) = 0.0992 W/kg

**SAR(1 g) = 0.056 W/kg; SAR(10 g) = 0.035 W/kg**

Maximum value of SAR (measured) = 0.0904 W/kg



0 dB = 0.0904 W/kg

## LTE Band 66\_20MHz\_QPSK\_1RB\_0Offset\_Right Cheek\_Ch132322

Communication System: UID 0, LTE (0); Frequency: 1745 MHz; Duty Cycle: 1:1

Medium: HSL\_1800 Medium parameters used:  $f = 1745$  MHz;  $\sigma = 1.382$  S/m;  $\epsilon_r = 41.164$ ;  $\rho = 1000$  kg/m<sup>3</sup>

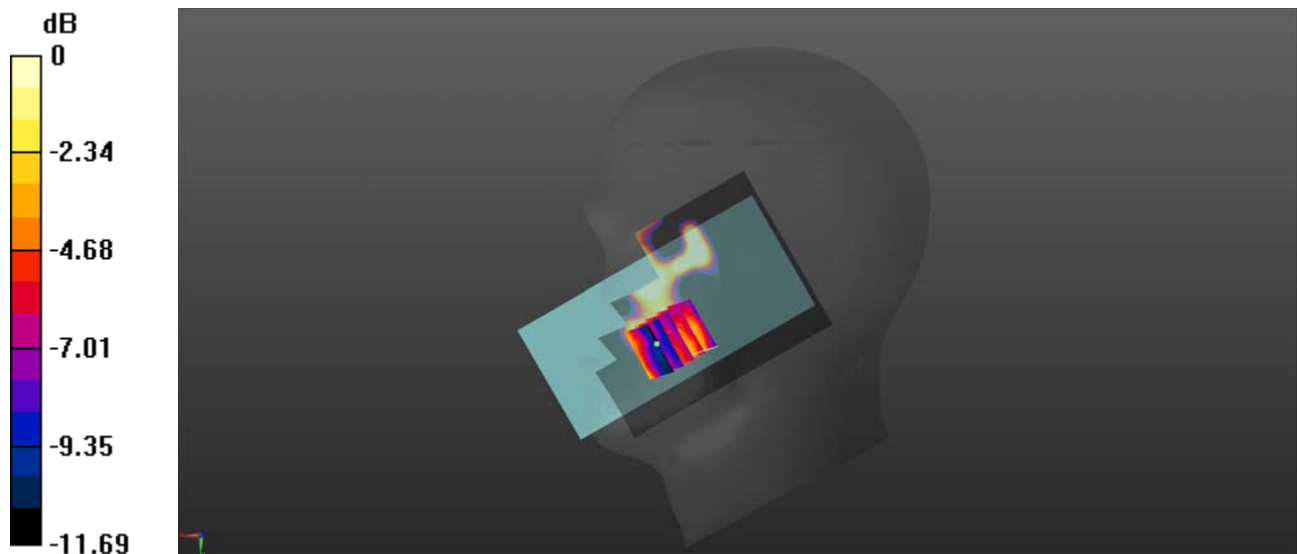
Ambient Temperature : 23.2 °C; Liquid Temperature : 22.1 °C

DASY5 Configuration:

- Probe: EX3DV4 - SN7608; ConvF(8.26, 8.26, 8.26) @ 1745 MHz; Calibrated: 2022.01.12
- Sensor-Surface: 2mm (Mechanical Surface Detection)
- Electronics: DAE4 Sn1643; Calibrated: 2021.12.30
- Phantom: Twin-SAM; Type: QD 000 P41 Ax; Serial: 2020
- Measurement SW: DASY52, Version 52.10 (4); SEMCAD X Version 14.6.14 (7483)

**Ch132322/Area Scan (71x101x1):** Interpolated grid: dx=1.500 mm, dy=1.500 mm  
Maximum value of SAR (interpolated) = 0.0277 W/kg

**Ch132322/Zoom Scan (5x5x7)/Cube 0:** Measurement grid: dx=8mm, dy=8mm, dz=5mm  
Reference Value = 0 V/m; Power Drift = 0.03 dB  
Peak SAR (extrapolated) = 0.0320 W/kg  
**SAR(1 g) = 0.077 W/kg; SAR(10 g) = 0.064 W/kg**  
Maximum value of SAR (measured) = 0.0104 W/kg



0 dB = 0.0104 W/kg

## WLAN 2.4GHz\_802.11b 1Mbps\_Right Cheek\_Ch7

Communication System: UID 0, WLAN 2.4GHz 802.11b (0); Frequency: 2442 MHz; Duty Cycle: 1:1.005  
Medium: HSL\_2450 Medium parameters used:  $f = 2442$  MHz;  $\sigma = 1.808$  S/m;  $\epsilon_r = 38.829$ ;  $\rho = 1000$  kg/m<sup>3</sup>

Ambient Temperature : 23.2 °C; Liquid Temperature : 22.4 °C

### DASY5 Configuration:

- Probe: EX3DV4 - SN7608; ConvF(7.42, 7.42, 7.42) @ 2442 MHz; Calibrated: 2022.01.12
- Sensor-Surface: 2mm (Mechanical Surface Detection)
- Electronics: DAE4 Sn1643; Calibrated: 2021.12.30
- Phantom: Twin-SAM; Type: QD 000 P41 Ax; Serial: 2020
- Measurement SW: DASY52, Version 52.10 (4); SEMCAD X Version 14.6.14 (7483)

**Ch7/Area Scan (81x101x1):** Interpolated grid: dx=1.200 mm, dy=1.200 mm

Maximum value of SAR (interpolated) = 1.31 W/kg

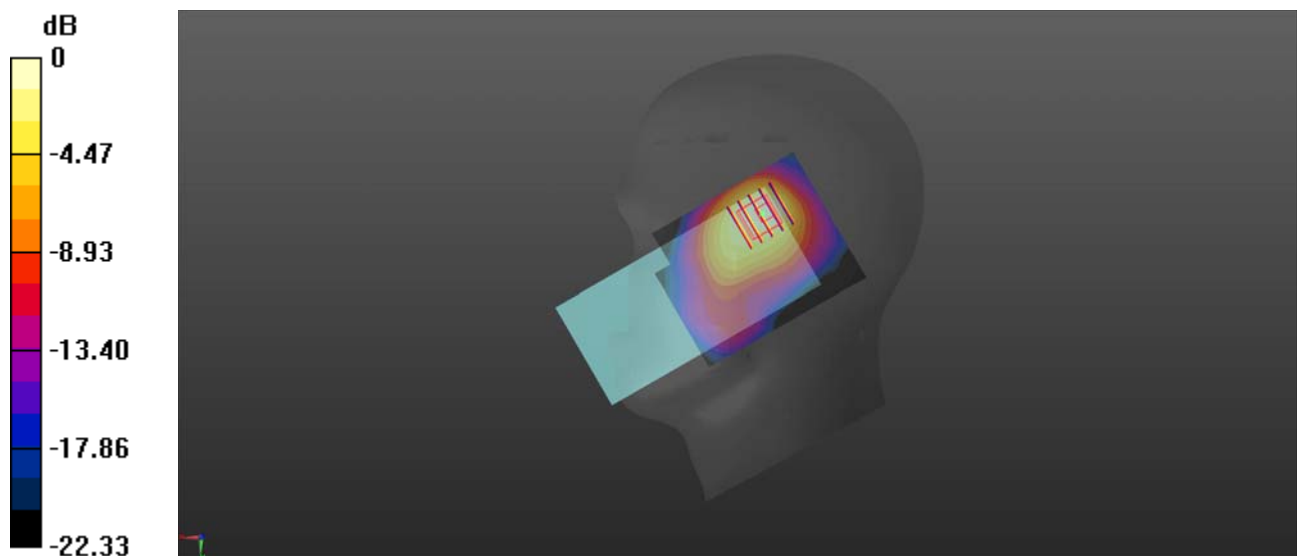
**Ch7/Zoom Scan (5x5x7)/Cube 0:** Measurement grid: dx=8mm, dy=8mm, dz=5mm

Reference Value = 11.09 V/m; Power Drift = 0.07 dB

Peak SAR (extrapolated) = 1.60 W/kg

**SAR(1 g) = 0.835 W/kg; SAR(10 g) = 0.438 W/kg**

Maximum value of SAR (measured) = 1.15 W/kg



0 dB = 1.15 W/kg

## GSM850\_GPRS(2 TX slots)\_Back Side\_10mm\_Ch189

Communication System: UID 0, GSM850(class 10) (0); Frequency: 836.4 MHz; Duty Cycle: 1:4.15  
Medium: HSL\_900 Medium parameters used:  $f = 836.4$  MHz;  $\sigma = 0.958$  S/m;  $\epsilon_r = 40.843$ ;  $\rho = 1000$  kg/m<sup>3</sup>

Ambient Temperature : 23.2 °C; Liquid Temperature : 22.2 °C

DASY5 Configuration:

- Probe: EX3DV4 - SN7608; ConvF(9.81, 9.81, 9.81) @ 836.4 MHz; Calibrated: 2022.01.12
- Sensor-Surface: 2mm (Mechanical Surface Detection)
- Electronics: DAE4 Sn1643; Calibrated: 2021.12.30
- Phantom: Twin-SAM; Type: QD 000 P41 Ax; Serial: 2020
- Measurement SW: DASY52, Version 52.10 (4); SEMCAD X Version 14.6.14 (7483)

**Ch189/Area Scan (71x101x1):** Interpolated grid: dx=1.500 mm, dy=1.500 mm

Maximum value of SAR (interpolated) = 0.255 W/kg

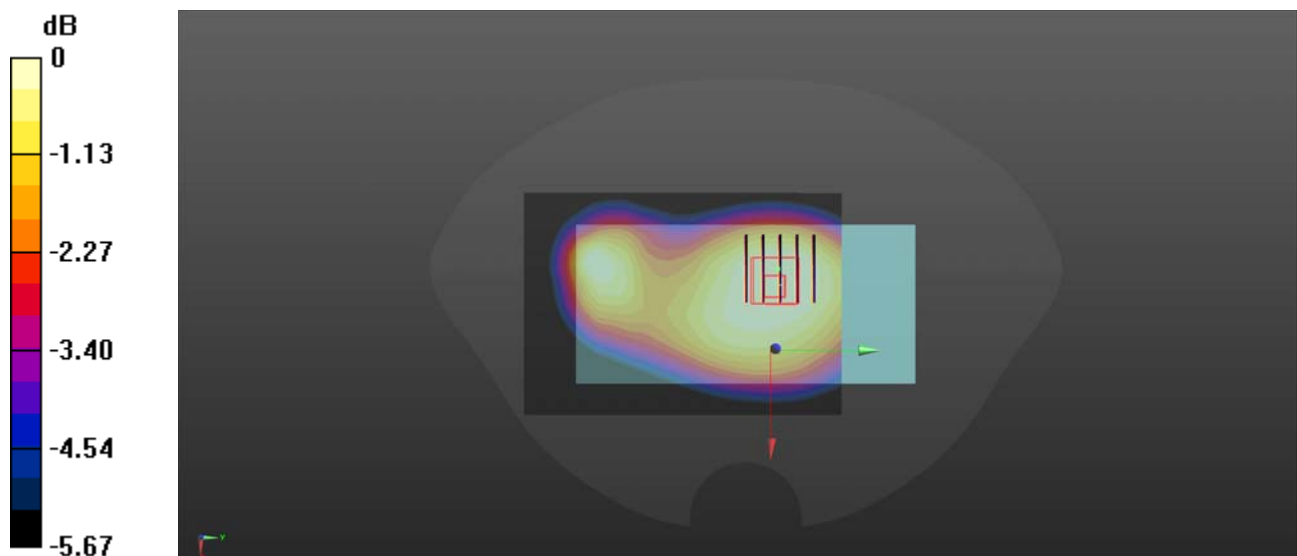
**Ch189/Zoom Scan (5x5x7)/Cube 0:** Measurement grid: dx=8mm, dy=8mm, dz=5mm

Reference Value = 15.65 V/m; Power Drift = -0.09 dB

Peak SAR (extrapolated) = 0.277 W/kg

**SAR(1 g) = 0.216 W/kg; SAR(10 g) = 0.164 W/kg**

Maximum value of SAR (measured) = 0.248 W/kg



0 dB = 0.248 W/kg

## GSM1900\_GPRS(2 TX slots)\_Back Side\_10mm\_Ch661

Communication System: UID 0, GSM1900(Class 10) (0); Frequency: 1880 MHz; Duty Cycle: 1:4.15  
Medium: HSL\_2000 Medium parameters used:  $f = 1880$  MHz;  $\sigma = 1.321$  S/m;  $\epsilon_r = 39.882$ ;  $\rho = 1000$  kg/m<sup>3</sup>

Ambient Temperature : 23.2 °C; Liquid Temperature : 22.1 °C

### DASY5 Configuration:

- Probe: EX3DV4 - SN7608; ConvF(7.99, 7.99, 7.99) @ 1880 MHz; Calibrated: 2022.01.12
- Sensor-Surface: 2mm (Mechanical Surface Detection)
- Electronics: DAE4 Sn1643; Calibrated: 2021.12.30
- Phantom: Twin-SAM; Type: QD 000 P41 Ax; Serial: 2020
- Measurement SW: DASY52, Version 52.10 (4); SEMCAD X Version 14.6.14 (7483)

**Ch661/Area Scan (71x81x1):** Interpolated grid: dx=1.500 mm, dy=1.500 mm

Maximum value of SAR (interpolated) = 0.146 W/kg

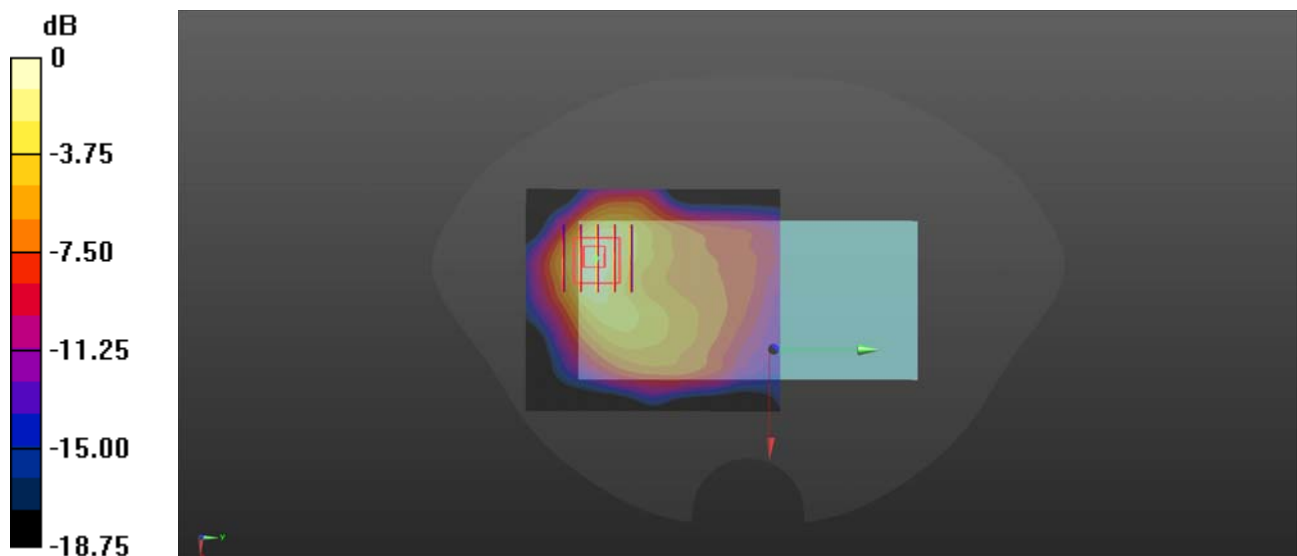
**Ch661/Zoom Scan (5x5x7)/Cube 0:** Measurement grid: dx=8mm, dy=8mm, dz=5mm

Reference Value = 2.712 V/m; Power Drift = 0.04 dB

Peak SAR (extrapolated) = 0.162 W/kg

**SAR(1 g) = 0.097 W/kg; SAR(10 g) = 0.053 W/kg**

Maximum value of SAR (measured) = 0.131 W/kg



0 dB = 0.131 W/kg

## WCDMA Band II\_RMC 12.2Kbps\_Back Side\_10mm\_Ch9400

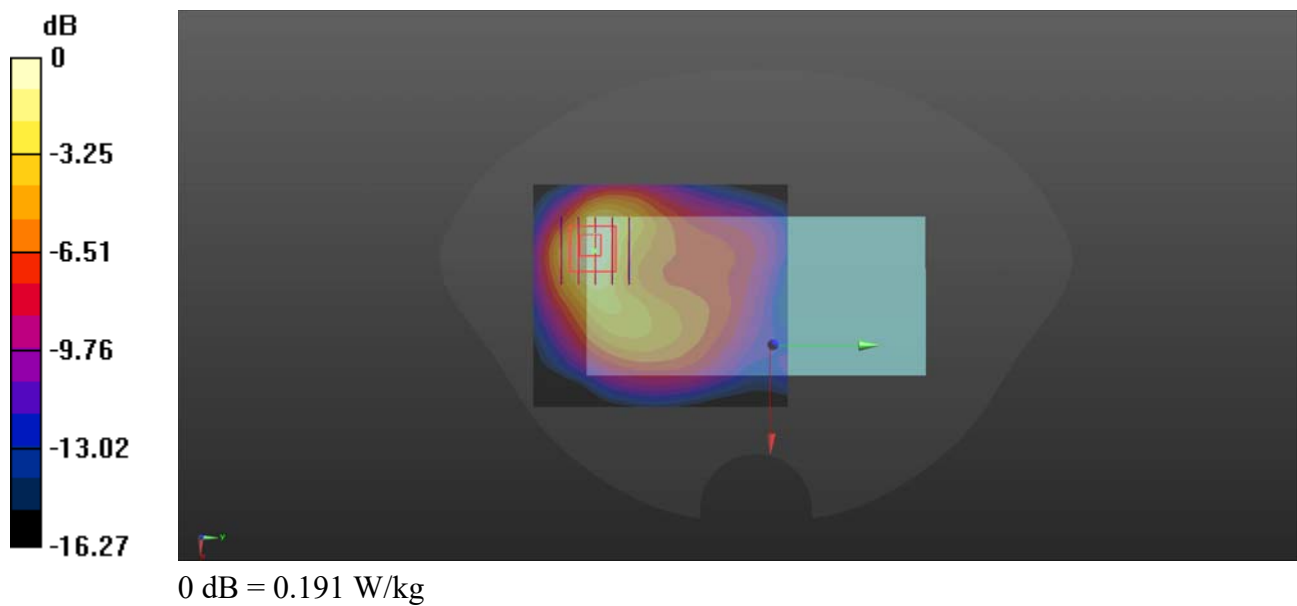
Communication System: UID 0, UMTS-FDD (0); Frequency: 1880 MHz; Duty Cycle: 1:1  
Medium: HSL\_2000 Medium parameters used:  $f = 1880$  MHz;  $\sigma = 1.321$  S/m;  $\epsilon_r = 39.882$ ;  $\rho = 1000$  kg/m<sup>3</sup>  
Ambient Temperature : 23.2 °C; Liquid Temperature : 22.1 °C

### DASY5 Configuration:

- Probe: EX3DV4 - SN7608; ConvF(7.99, 7.99, 7.99) @ 1880 MHz; Calibrated: 2022.01.12
- Sensor-Surface: 2mm (Mechanical Surface Detection)
- Electronics: DAE4 Sn1643; Calibrated: 2021.12.30
- Phantom: Twin-SAM; Type: QD 000 P41 Ax; Serial: 2020
- Measurement SW: DASY52, Version 52.10 (4); SEMCAD X Version 14.6.14 (7483)

**Ch9400/Area Scan (71x81x1):** Interpolated grid: dx=1.500 mm, dy=1.500 mm  
Maximum value of SAR (interpolated) = 0.198 W/kg

**Ch9400/Zoom Scan (5x5x7)/Cube 0:** Measurement grid: dx=8mm, dy=8mm, dz=5mm  
Reference Value = 3.381 V/m; Power Drift = 0.03 dB  
Peak SAR (extrapolated) = 0.252 W/kg  
**SAR(1 g) = 0.145 W/kg; SAR(10 g) = 0.078 W/kg**  
Maximum value of SAR (measured) = 0.191 W/kg



## WCDMA Band II\_RMC 12.2Kbps\_Bottom Side\_10mm\_Ch9400

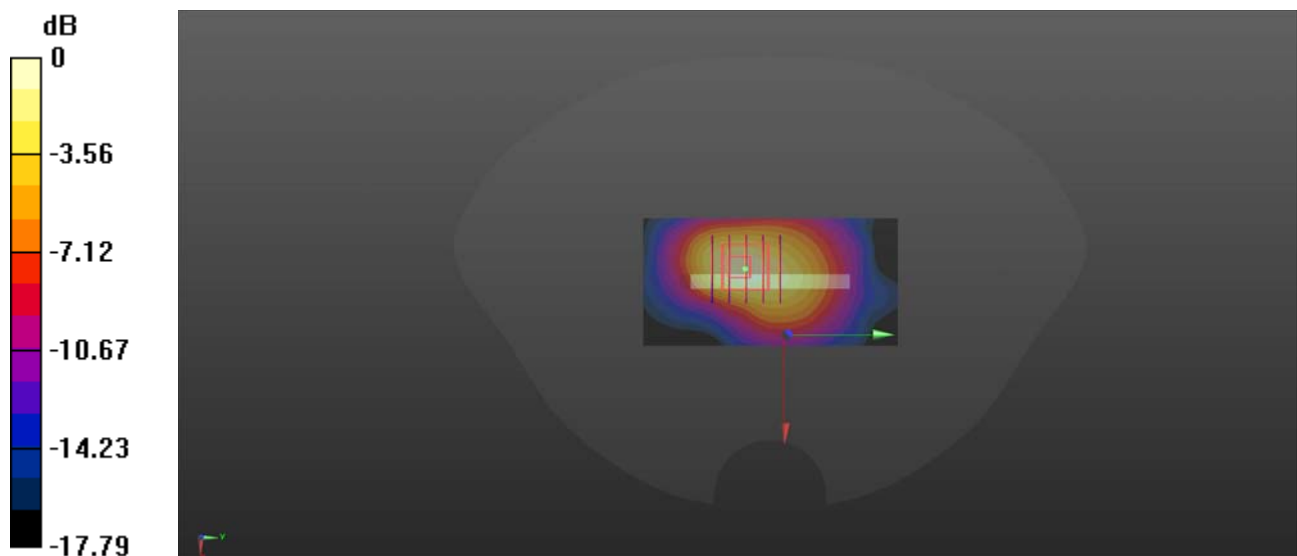
Communication System: UID 0, UMTS-FDD (0); Frequency: 1880 MHz; Duty Cycle: 1:1  
Medium: HSL\_2000 Medium parameters used:  $f = 1880$  MHz;  $\sigma = 1.321$  S/m;  $\epsilon_r = 39.882$ ;  $\rho = 1000$  kg/m<sup>3</sup>  
Ambient Temperature : 23.2 °C; Liquid Temperature : 22.1 °C

### DASY5 Configuration:

- Probe: EX3DV4 - SN7608; ConvF(7.99, 7.99, 7.99) @ 1880 MHz; Calibrated: 2022.01.12
- Sensor-Surface: 2mm (Mechanical Surface Detection)
- Electronics: DAE4 Sn1643; Calibrated: 2021.12.30
- Phantom: Twin-SAM; Type: QD 000 P41 Ax; Serial: 2020
- Measurement SW: DASY52, Version 52.10 (4); SEMCAD X Version 14.6.14 (7483)

**Ch9400/Area Scan (41x81x1):** Interpolated grid: dx=1.500 mm, dy=1.500 mm  
Maximum value of SAR (interpolated) = 0.198 W/kg

**Ch9400/Zoom Scan (5x5x7)/Cube 0:** Measurement grid: dx=8mm, dy=8mm, dz=5mm  
Reference Value = 9.283 V/m; Power Drift = 0.05 dB  
Peak SAR (extrapolated) = 0.256 W/kg  
**SAR(1 g) = 0.150 W/kg; SAR(10 g) = 0.082 W/kg**  
Maximum value of SAR (measured) = 0.203 W/kg



0 dB = 0.203 W/kg



## WCDMA Band IV\_RMC 12.2Kbps\_Back Side\_10mm\_Ch1413

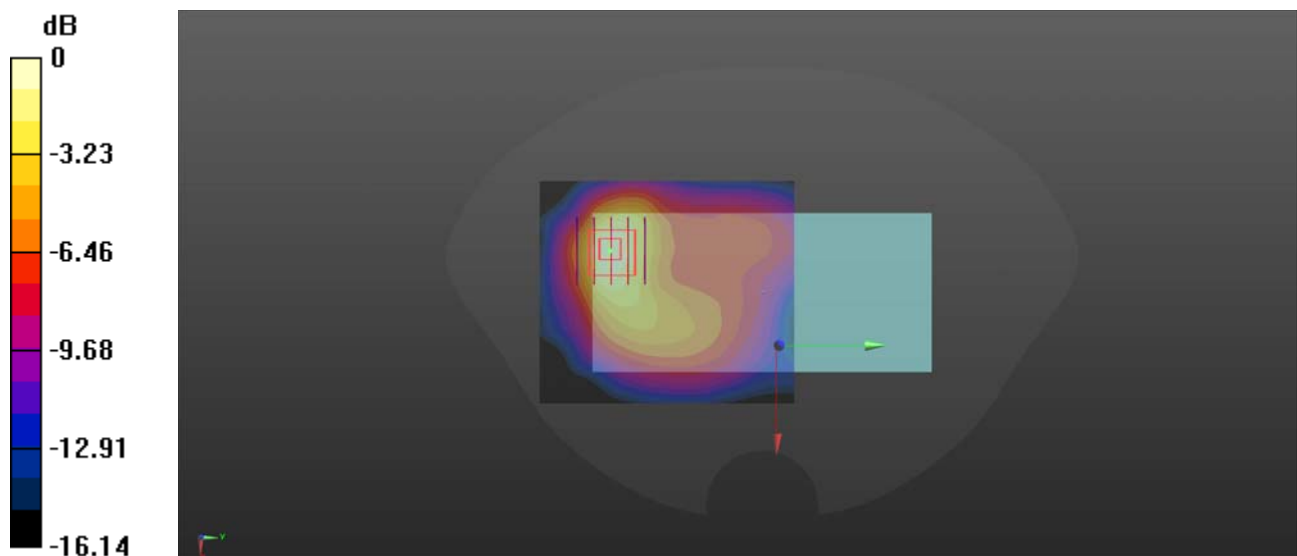
Communication System: UID 0, UMTS-FDD (0); Frequency: 1732.6 MHz; Duty Cycle: 1:1  
Medium: HSL\_1800 Medium parameters used:  $f = 1733$  MHz;  $\sigma = 1.366$  S/m;  $\epsilon_r = 41.367$ ;  $\rho = 1000$  kg/m<sup>3</sup>  
Ambient Temperature : 23.2 °C; Liquid Temperature : 22.1 °C

### DASY5 Configuration:

- Probe: EX3DV4 - SN7608; ConvF(8.26, 8.26, 8.26) @ 1732.6 MHz; Calibrated: 2022.01.12
- Sensor-Surface: 2mm (Mechanical Surface Detection)
- Electronics: DAE4 Sn1643; Calibrated: 2021.12.30
- Phantom: Twin-SAM; Type: QD 000 P41 Ax; Serial: 2020
- Measurement SW: DASY52, Version 52.10 (4); SEMCAD X Version 14.6.14 (7483)

**Ch1413/Area Scan (71x81x1):** Interpolated grid: dx=1.500 mm, dy=1.500 mm  
Maximum value of SAR (interpolated) = 0.169 W/kg

**Ch1413/Zoom Scan (5x5x7)/Cube 0:** Measurement grid: dx=8mm, dy=8mm, dz=5mm  
Reference Value = 3.152 V/m; Power Drift = 0.02 dB  
Peak SAR (extrapolated) = 0.190 W/kg  
**SAR(1 g) = 0.113 W/kg; SAR(10 g) = 0.063 W/kg**  
Maximum value of SAR (measured) = 0.154 W/kg



0 dB = 0.154 W/kg

## WCDMA Band V\_RMC 12.2Kbps\_Back Side\_10mm\_Ch4182

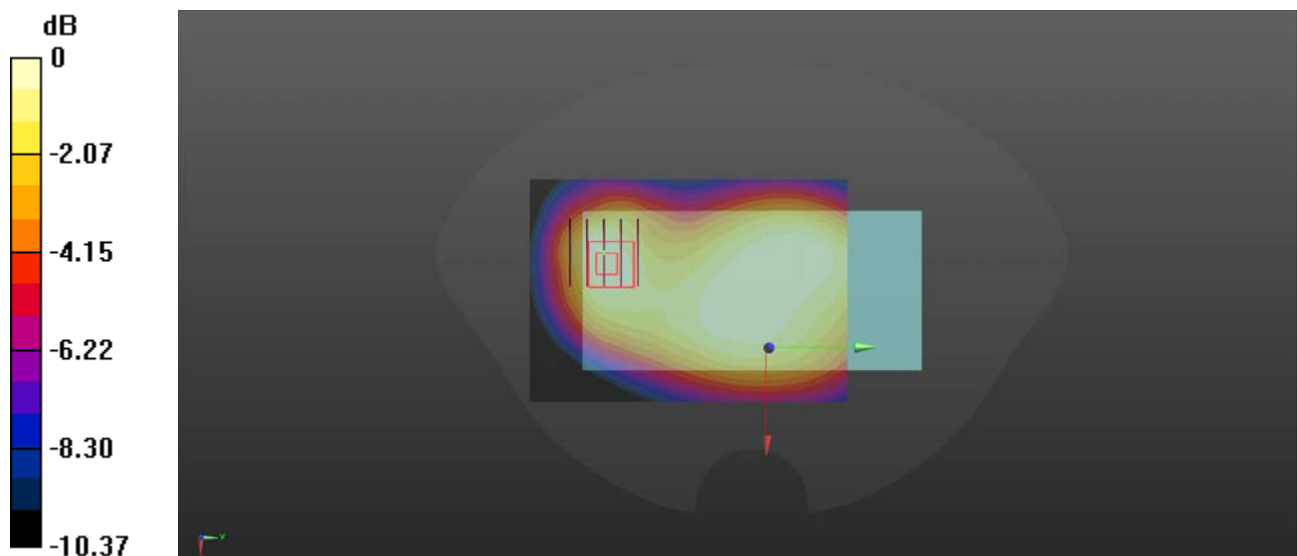
Communication System: UID 0, UMTS-FDD (0); Frequency: 836.4 MHz; Duty Cycle: 1:1  
 Medium: HSL\_900 Medium parameters used:  $f = 836.4$  MHz;  $\sigma = 0.958$  S/m;  $\epsilon_r = 40.843$ ;  $\rho = 1000$  kg/m<sup>3</sup>  
 Ambient Temperature : 23.2 °C; Liquid Temperature : 22.2 °C

### DASY5 Configuration:

- Probe: EX3DV4 - SN7608; ConvF(9.81, 9.81, 9.81) @ 836.4 MHz; Calibrated: 2022.01.12
- Sensor-Surface: 2mm (Mechanical Surface Detection)
- Electronics: DAE4 Sn1643; Calibrated: 2021.12.30
- Phantom: Twin-SAM; Type: QD 000 P41 Ax; Serial: 2020
- Measurement SW: DASY52, Version 52.10 (4); SEMCAD X Version 14.6.14 (7483)

**Ch4182/Area Scan (71x101x1):** Interpolated grid: dx=1.500 mm, dy=1.500 mm  
 Maximum value of SAR (interpolated) = 0.222 W/kg

**Ch4182/Zoom Scan (5x5x7)/Cube 0:** Measurement grid: dx=8mm, dy=8mm, dz=5mm  
 Reference Value = 14.68 V/m; Power Drift = -0.09 dB  
 Peak SAR (extrapolated) = 0.258 W/kg  
**SAR(1 g) = 0.164 W/kg; SAR(10 g) = 0.107 W/kg**  
 Maximum value of SAR (measured) = 0.209 W/kg



0 dB = 0.209 W/kg

## LTE Band 2\_20MHz\_QPSK\_1RB\_0Offset\_Back Side\_10mm\_Ch18900

Communication System: UID 0, LTE (0); Frequency: 1880 MHz; Duty Cycle: 1:1

Medium: HSL\_2000 Medium parameters used:  $f = 1880$  MHz;  $\sigma = 1.321$  S/m;  $\epsilon_r = 39.882$ ;  $\rho = 1000$  kg/m<sup>3</sup>

Ambient Temperature : 23.2 °C; Liquid Temperature : 22.1 °C

DASY5 Configuration:

- Probe: EX3DV4 - SN7608; ConvF(7.99, 7.99, 7.99) @ 1880 MHz; Calibrated: 2022.01.12
- Sensor-Surface: 2mm (Mechanical Surface Detection)
- Electronics: DAE4 Sn1643; Calibrated: 2021.12.30
- Phantom: Twin-SAM; Type: QD 000 P41 Ax; Serial: 2020
- Measurement SW: DASY52, Version 52.10 (4); SEMCAD X Version 14.6.14 (7483)

**Ch18900/Area Scan (71x81x1):** Interpolated grid: dx=1.500 mm, dy=1.500 mm

Maximum value of SAR (interpolated) = 0.221 W/kg

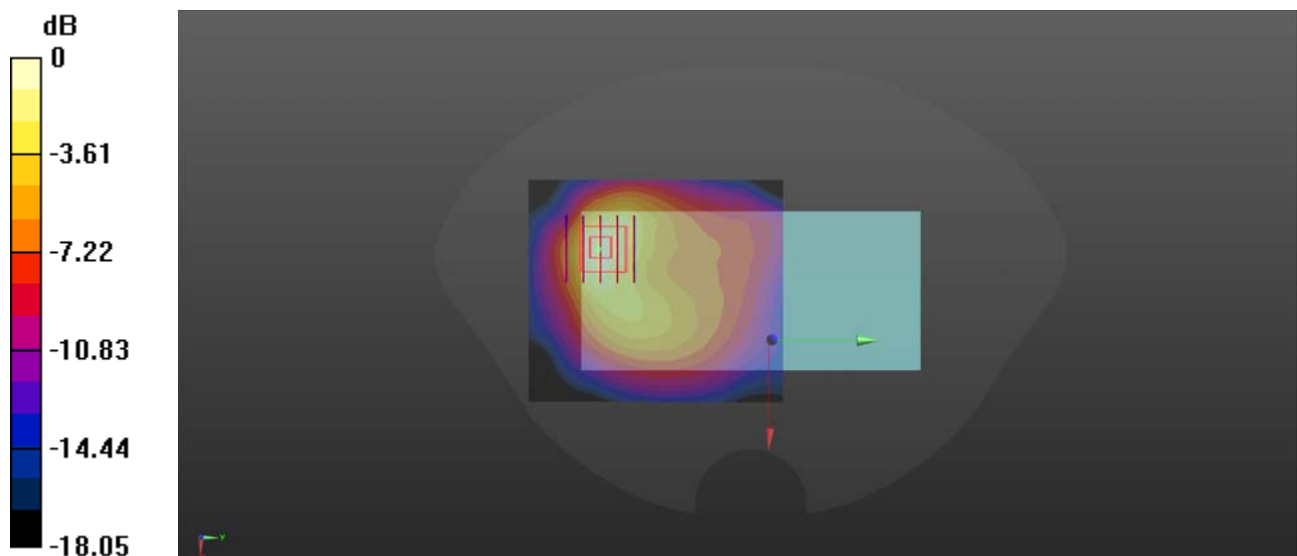
**Ch18900/Zoom Scan (5x5x7)/Cube 0:** Measurement grid: dx=8mm, dy=8mm, dz=5mm

Reference Value = 3.732 V/m; Power Drift = 0.02 dB

Peak SAR (extrapolated) = 0.260 W/kg

**SAR(1 g) = 0.152 W/kg; SAR(10 g) = 0.083 W/kg**

Maximum value of SAR (measured) = 0.209 W/kg



0 dB = 0.209 W/kg

## LTE Band 2\_20MHz\_QPSK\_1RB\_0Offset\_Bottom Side\_10mm\_Ch18900

Communication System: UID 0, LTE (0); Frequency: 1880 MHz; Duty Cycle: 1:1

Medium: HSL\_2000 Medium parameters used:  $f = 1880$  MHz;  $\sigma = 1.321$  S/m;  $\epsilon_r = 39.882$ ;  $\rho = 1000$  kg/m<sup>3</sup>

Ambient Temperature : 23.2 °C; Liquid Temperature : 22.1 °C

DASY5 Configuration:

- Probe: EX3DV4 - SN7608; ConvF(7.99, 7.99, 7.99) @ 1880 MHz; Calibrated: 2022.01.12
- Sensor-Surface: 2mm (Mechanical Surface Detection)
- Electronics: DAE4 Sn1643; Calibrated: 2021.12.30
- Phantom: Twin-SAM; Type: QD 000 P41 Ax; Serial: 2020
- Measurement SW: DASY52, Version 52.10 (4); SEMCAD X Version 14.6.14 (7483)

**Ch18900/Area Scan (41x81x1):** Interpolated grid: dx=1.500 mm, dy=1.500 mm

Maximum value of SAR (interpolated) = 0.223 W/kg

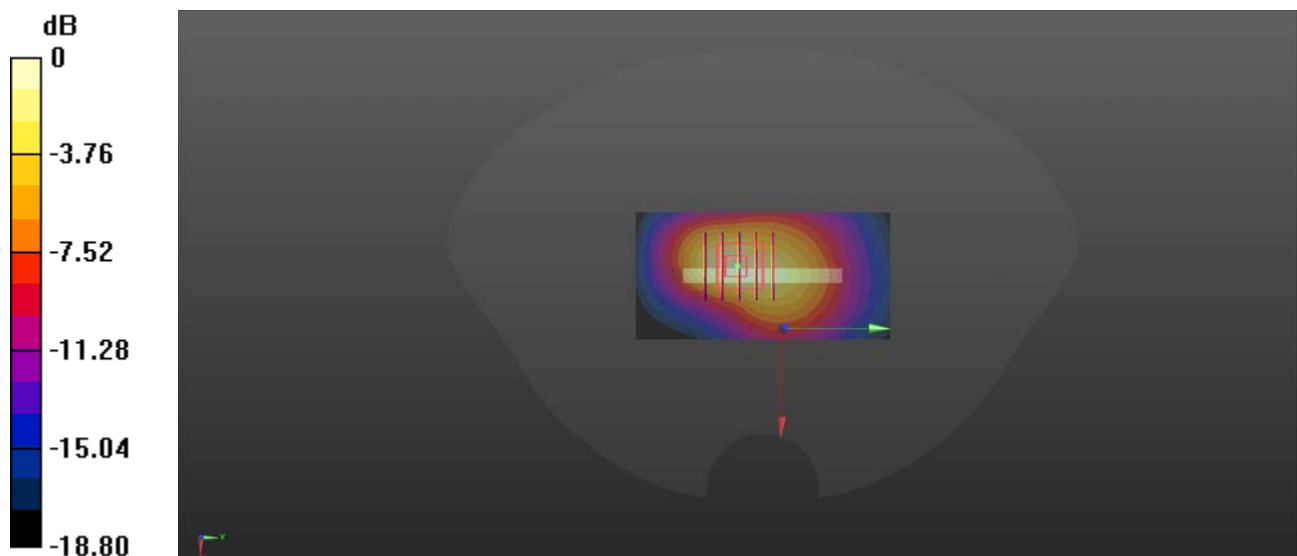
**Ch18900/Zoom Scan (5x5x7)/Cube 0:** Measurement grid: dx=8mm, dy=8mm, dz=5mm

Reference Value = 10.20 V/m; Power Drift = -0.02 dB

Peak SAR (extrapolated) = 0.269 W/kg

**SAR(1 g) = 0.157 W/kg; SAR(10 g) = 0.085 W/kg**

Maximum value of SAR (measured) = 0.218 W/kg



0 dB = 0.218 W/kg

## LTE Band 5\_10MHz\_QPSK\_1RB\_0Offset\_Back Side\_10mm\_Ch20525

Communication System: UID 0, LTE (0); Frequency: 836.5 MHz; Duty Cycle: 1:1

Medium: HSL\_900 Medium parameters used:  $f = 836.5$  MHz;  $\sigma = 0.958$  S/m;  $\epsilon_r = 40.846$ ;  $\rho = 1000$  kg/m<sup>3</sup>

Ambient Temperature : 23.2 °C; Liquid Temperature : 22.2 °C

DASY5 Configuration:

- Probe: EX3DV4 - SN7608; ConvF(9.81, 9.81, 9.81) @ 836.5 MHz; Calibrated: 2022.01.12
- Sensor-Surface: 2mm (Mechanical Surface Detection)
- Electronics: DAE4 Sn1643; Calibrated: 2021.12.30
- Phantom: Twin-SAM; Type: QD 000 P41 Ax; Serial: 2020
- Measurement SW: DASY52, Version 52.10 (4); SEMCAD X Version 14.6.14 (7483)

**Ch20525/Area Scan (71x101x1):** Interpolated grid: dx=1.500 mm, dy=1.500 mm

Maximum value of SAR (interpolated) = 0.238 W/kg

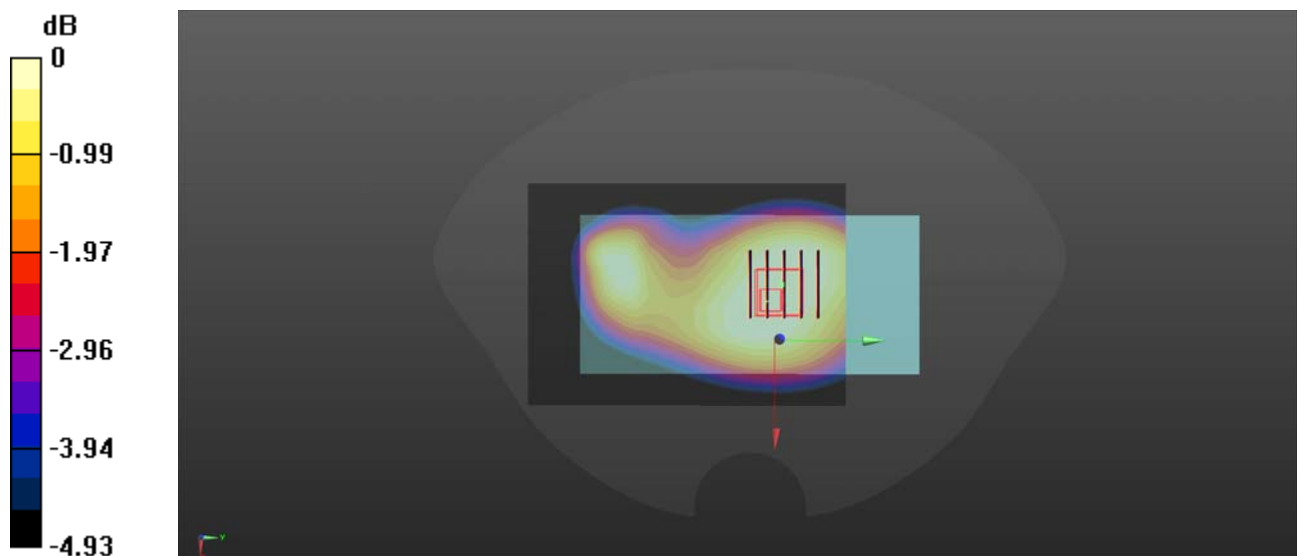
**Ch20525/Zoom Scan (5x5x7)/Cube 0:** Measurement grid: dx=8mm, dy=8mm, dz=5mm

Reference Value = 15.36 V/m; Power Drift = -0.07 dB

Peak SAR (extrapolated) = 0.252 W/kg

**SAR(1 g) = 0.199 W/kg; SAR(10 g) = 0.155 W/kg**

Maximum value of SAR (measured) = 0.229 W/kg



0 dB = 0.229 W/kg

## LTE Band 7\_20MHz\_QPSK\_1RB\_0Offset\_Back Side\_10mm\_Ch21100

Communication System: UID 0, LTE (0); Frequency: 2535 MHz; Duty Cycle: 1:1

Medium: HSL\_2600 Medium parameters used:  $f = 2535$  MHz;  $\sigma = 1.911$  S/m;  $\epsilon_r = 38.489$ ;  $\rho = 1000$  kg/m<sup>3</sup>

Ambient Temperature : 23.2 °C; Liquid Temperature : 22.4 °C

DASY5 Configuration:

- Probe: EX3DV4 - SN7608; ConvF(7.08, 7.08, 7.08) @ 2600 MHz; Calibrated: 2022.01.12
- Sensor-Surface: 2mm (Mechanical Surface Detection)
- Electronics: DAE4 Sn1643; Calibrated: 2021.12.30
- Phantom: Twin-SAM; Type: QD 000 P41 Ax; Serial: 2020
- Measurement SW: DASY52, Version 52.10 (4); SEMCAD X Version 14.6.14 (7483)

**Ch21100/Area Scan (81x91x1):** Interpolated grid: dx=1.200 mm, dy=1.200 mm

Maximum value of SAR (interpolated) = 1.09 W/kg

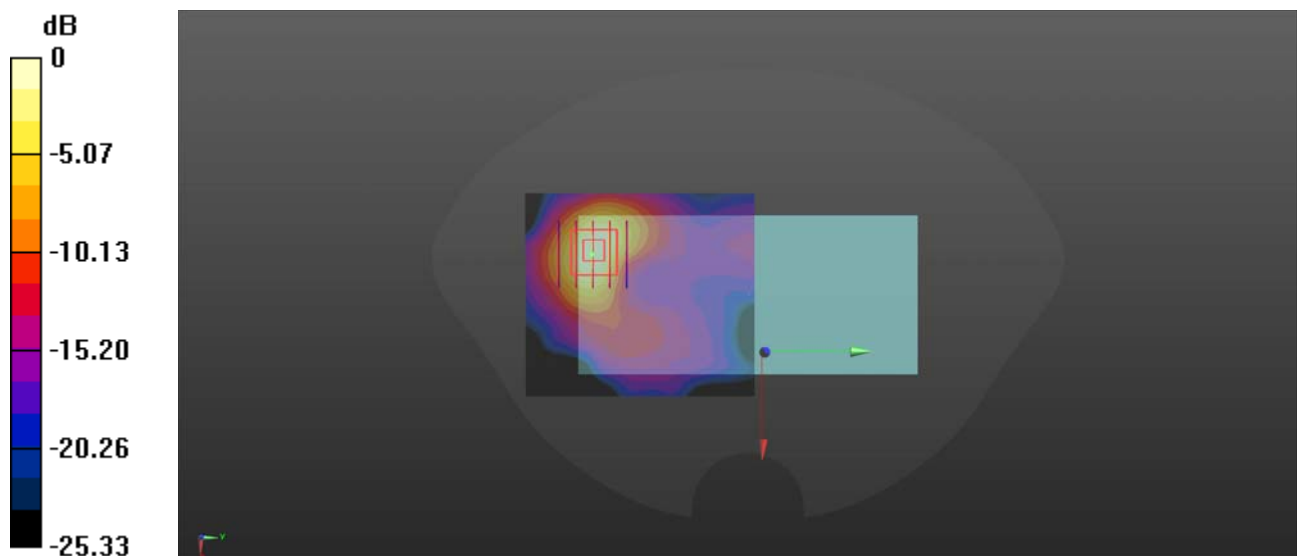
**Ch21100/Zoom Scan (5x5x7)/Cube 0:** Measurement grid: dx=5mm, dy=5mm, dz=5mm

Reference Value = 2.068 V/m; Power Drift = 0.09 dB

Peak SAR (extrapolated) = 1.36 W/kg

**SAR(1 g) = 0.683 W/kg; SAR(10 g) = 0.310 W/kg**

Maximum value of SAR (measured) = 1.00 W/kg



0 dB = 1.00 W/kg

## LTE Band 12\_10MHz\_QPSK\_1RB\_0Offset\_Back Side\_10mm\_Ch23095

Communication System: UID 0, LTE (0); Frequency: 707.5 MHz; Duty Cycle: 1:1

Medium: HSL\_750 Medium parameters used:  $f = 707.5$  MHz;  $\sigma = 0.891$  S/m;  $\epsilon_r = 40.871$ ;  $\rho = 1000$  kg/m<sup>3</sup>

Ambient Temperature : 23.2 °C; Liquid Temperature : 22.3 °C

DASY5 Configuration:

- Probe: EX3DV4 - SN7608; ConvF(10.2, 10.2, 10.2) @ 707.5 MHz; Calibrated: 2022.01.12
- Sensor-Surface: 2mm (Mechanical Surface Detection)
- Electronics: DAE4 Sn1643; Calibrated: 2021.12.30
- Phantom: Twin-SAM; Type: QD 000 P41 Ax; Serial: 2020
- Measurement SW: DASY52, Version 52.10 (4); SEMCAD X Version 14.6.14 (7483)

**Ch23095/Area Scan (71x101x1):** Interpolated grid: dx=1.500 mm, dy=1.500 mm

Maximum value of SAR (interpolated) = 0.0290 W/kg

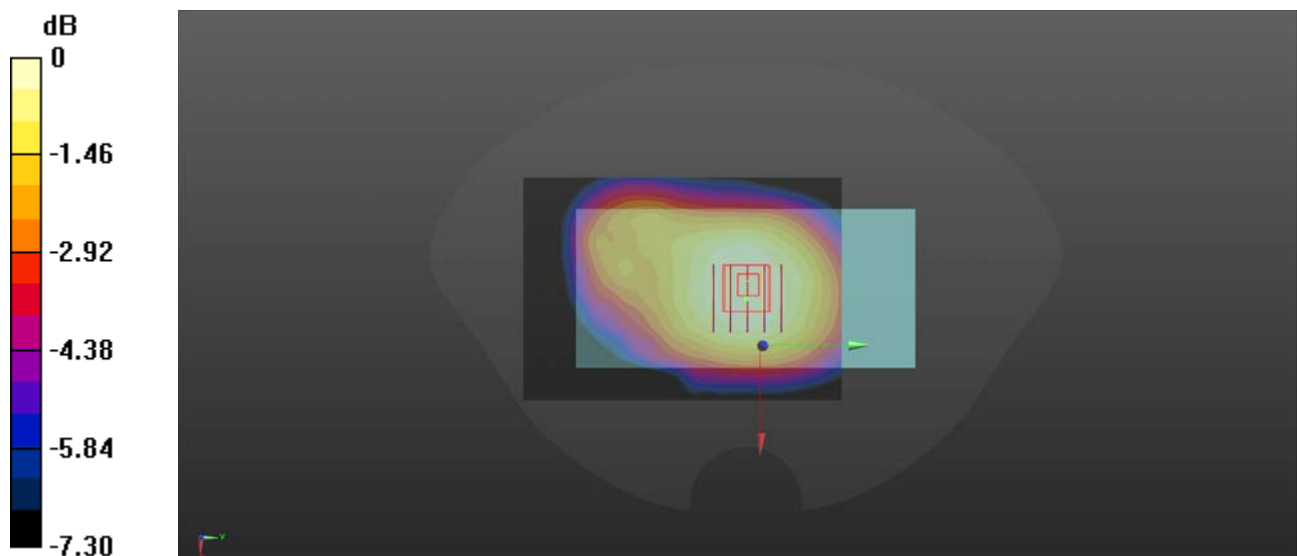
**Ch23095/Zoom Scan (5x5x7)/Cube 0:** Measurement grid: dx=8mm, dy=8mm, dz=5mm

Reference Value = 5.399 V/m; Power Drift = 0.02 dB

Peak SAR (extrapolated) = 0.0310 W/kg

**SAR(1 g) = 0.041 W/kg; SAR(10 g) = 0.031 W/kg**

Maximum value of SAR (measured) = 0.0284 W/kg



0 dB = 0.0284 W/kg

## LTE Band 66\_20MHz\_QPSK\_1RB\_0Offset\_Back Side\_10mm\_Ch132322

Communication System: UID 0, LTE (0); Frequency: 1745 MHz; Duty Cycle: 1:1

Medium: HSL\_1800 Medium parameters used:  $f = 1745$  MHz;  $\sigma = 1.382$  S/m;  $\epsilon_r = 41.164$ ;  $\rho = 1000$  kg/m<sup>3</sup>

Ambient Temperature : 23.2 °C; Liquid Temperature : 22.1 °C

DASY5 Configuration:

- Probe: EX3DV4 - SN7608; ConvF(8.26, 8.26, 8.26) @ 1745 MHz; Calibrated: 2022.01.12
- Sensor-Surface: 2mm (Mechanical Surface Detection)
- Electronics: DAE4 Sn1643; Calibrated: 2021.12.30
- Phantom: Twin-SAM; Type: QD 000 P41 Ax; Serial: 2020
- Measurement SW: DASY52, Version 52.10 (4); SEMCAD X Version 14.6.14 (7483)

**Ch132322/Area Scan (71x81x1):** Interpolated grid: dx=1.500 mm, dy=1.500 mm

Maximum value of SAR (interpolated) = 0.148 W/kg

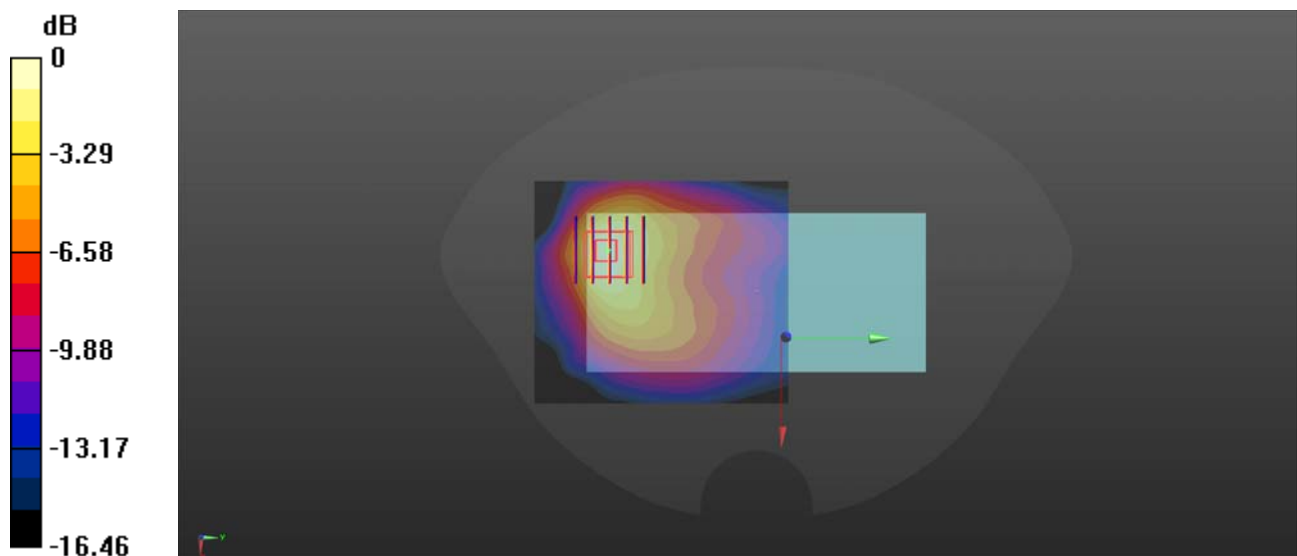
**Ch132322/Zoom Scan (5x5x7)/Cube 0:** Measurement grid: dx=8mm, dy=8mm, dz=5mm

Reference Value = 2.342 V/m; Power Drift = 0.09 dB

Peak SAR (extrapolated) = 0.169 W/kg

**SAR(1 g) = 0.101 W/kg; SAR(10 g) = 0.057 W/kg**

Maximum value of SAR (measured) = 0.136 W/kg



0 dB = 0.136 W/kg



## LTE Band 66\_20MHz\_QPSK\_1RB\_0Offset\_Bottom Side\_10mm\_Ch132322

Communication System: UID 0, LTE (0); Frequency: 1745 MHz; Duty Cycle: 1:1

Medium: HSL\_1800 Medium parameters used:  $f = 1745$  MHz;  $\sigma = 1.382$  S/m;  $\epsilon_r = 41.164$ ;  $\rho = 1000$  kg/m<sup>3</sup>

Ambient Temperature : 23.2 °C; Liquid Temperature : 22.1 °C

DASY5 Configuration:

- Probe: EX3DV4 - SN7608; ConvF(8.26, 8.26, 8.26) @ 1745 MHz; Calibrated: 2022.01.12
- Sensor-Surface: 2mm (Mechanical Surface Detection)
- Electronics: DAE4 Sn1643; Calibrated: 2021.12.30
- Phantom: Twin-SAM; Type: QD 000 P41 Ax; Serial: 2020
- Measurement SW: DASY52, Version 52.10 (4); SEMCAD X Version 14.6.14 (7483)

**Ch132322/Area Scan (41x81x1):** Interpolated grid: dx=1.500 mm, dy=1.500 mm

Maximum value of SAR (interpolated) = 0.161 W/kg

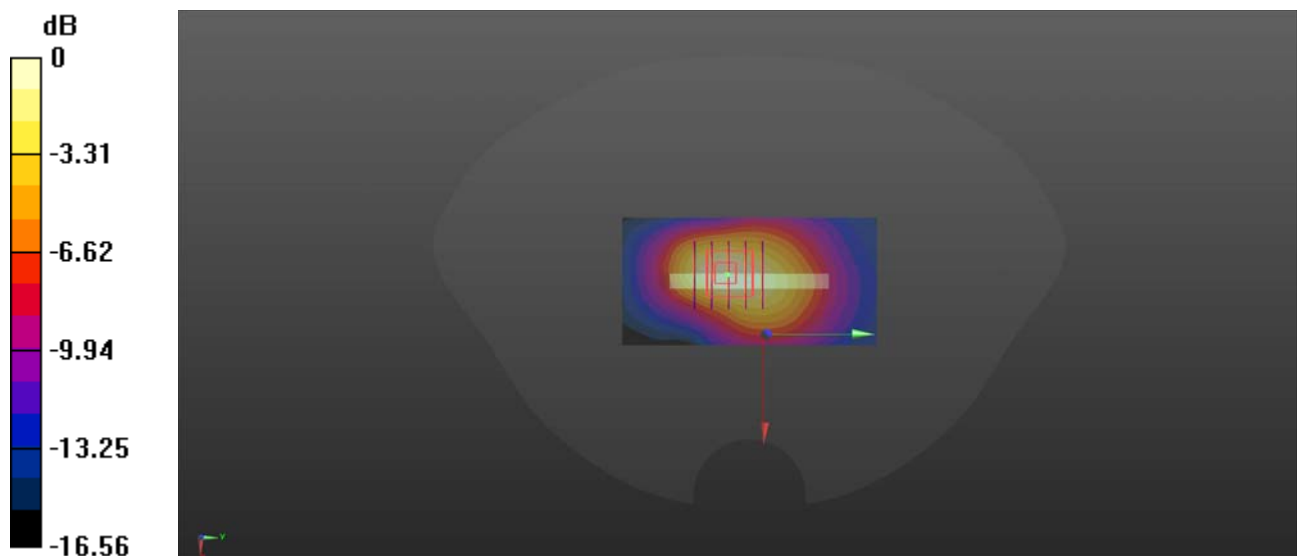
**Ch132322/Zoom Scan (5x5x7)/Cube 0:** Measurement grid: dx=8mm, dy=8mm, dz=5mm

Reference Value = 8.501 V/m; Power Drift = 0.01 dB

Peak SAR (extrapolated) = 0.187 W/kg

**SAR(1 g) = 0.112 W/kg; SAR(10 g) = 0.063 W/kg**

Maximum value of SAR (measured) = 0.151 W/kg



0 dB = 0.151 W/kg

## WLAN 2.4GHz\_802.11b 1Mbps\_Back Side\_10mm\_Ch7

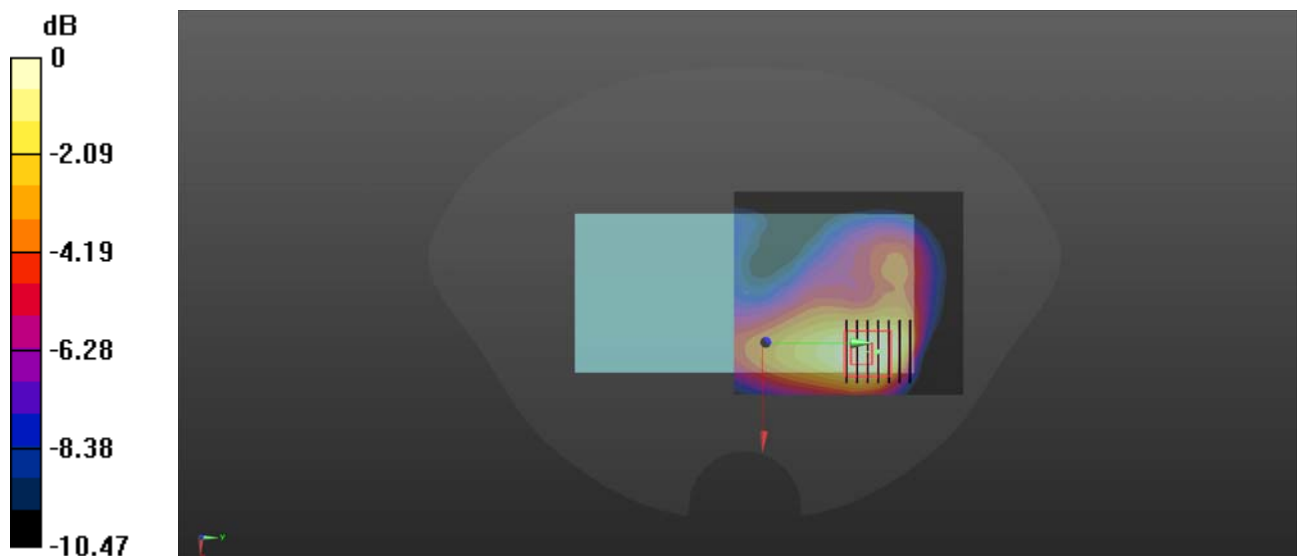
Communication System: UID 0, WLAN 2.4GHz 802.11b (0); Frequency: 2442 MHz; Duty Cycle: 1:1.005  
Medium: HSL\_2450 Medium parameters used:  $f = 2442$  MHz;  $\sigma = 1.808$  S/m;  $\epsilon_r = 38.829$ ;  $\rho = 1000$  kg/m<sup>3</sup>  
Ambient Temperature : 23.2 °C; Liquid Temperature : 22.4 °C

### DASY5 Configuration:

- Probe: EX3DV4 - SN7608; ConvF(7.42, 7.42, 7.42) @ 2442 MHz; Calibrated: 2022.01.12
- Sensor-Surface: 2mm (Mechanical Surface Detection)
- Electronics: DAE4 Sn1643; Calibrated: 2021.12.30
- Phantom: Twin-SAM; Type: QD 000 P41 Ax; Serial: 2020
- Measurement SW: DASY52, Version 52.10 (4); SEMCAD X Version 14.6.14 (7483)

**Ch7/Area Scan (81x91x1):** Interpolated grid: dx=1.200 mm, dy=1.200 mm  
Maximum value of SAR (interpolated) = 0.361 W/kg

**Ch7/Zoom Scan (7x7x7)/Cube 0:** Measurement grid: dx=5mm, dy=5mm, dz=5mm  
Reference Value = 4.136 V/m; Power Drift = 0.07 dB  
Peak SAR (extrapolated) = 0.406 W/kg  
**SAR(1 g) = 0.219 W/kg; SAR(10 g) = 0.119 W/kg**  
Maximum value of SAR (measured) = 0.311 W/kg



0 dB = 0.311 W/kg

## Bluetooth\_DH5\_Back Side\_10mm\_Ch78

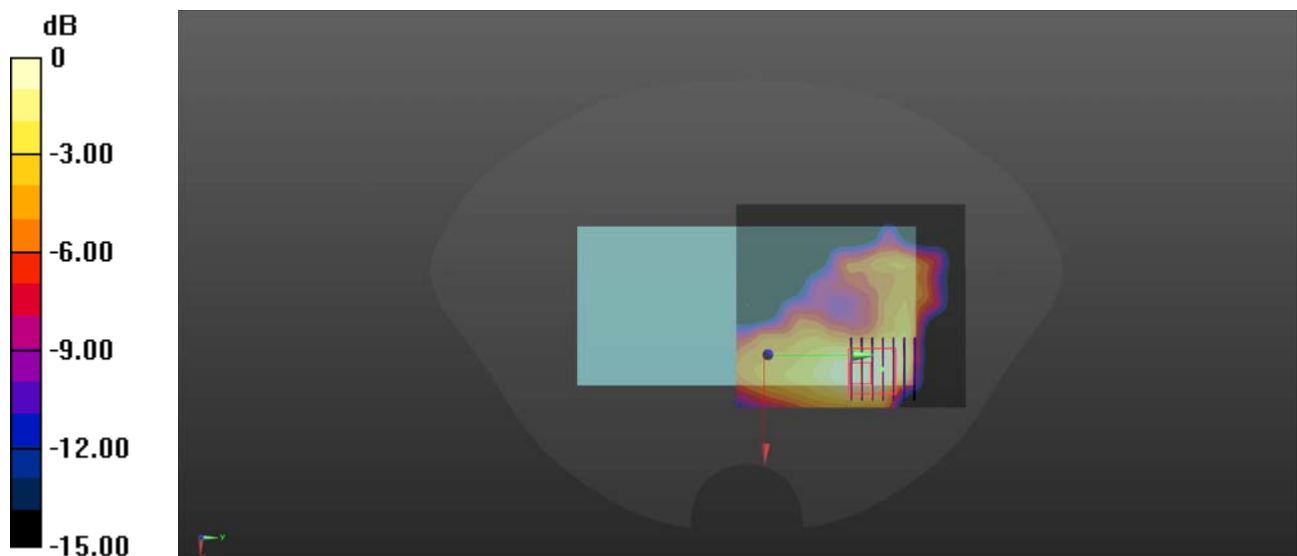
Communication System: UID 0, Bluetooth (0); Frequency: 2480 MHz; Duty Cycle: 1:1.294  
Medium: HSL\_2450 Medium parameters used:  $f = 2480$  MHz;  $\sigma = 1.839$  S/m;  $\epsilon_r = 38.675$ ;  $\rho = 1000$  kg/m<sup>3</sup>  
Ambient Temperature : 23.2 °C; Liquid Temperature : 22.4 °C

### DASY5 Configuration:

- Probe: EX3DV4 - SN7608; ConvF(7.42, 7.42, 7.42) @ 2480 MHz; Calibrated: 2022.01.12
- Sensor-Surface: 2mm (Mechanical Surface Detection)
- Electronics: DAE4 Sn1643; Calibrated: 2021.12.30
- Phantom: Twin-SAM; Type: QD 000 P41 Ax; Serial: 2020
- Measurement SW: DASY52, Version 52.10 (4); SEMCAD X Version 14.6.14 (7483)

**Ch78/Area Scan (81x91x1):** Interpolated grid: dx=1.200 mm, dy=1.200 mm  
Maximum value of SAR (interpolated) = 0.0230 W/kg

**Ch78/Zoom Scan (7x7x7)/Cube 0:** Measurement grid: dx=5mm, dy=5mm, dz=5mm  
Reference Value = 0.6850 V/m; Power Drift = 0.06 dB  
Peak SAR (extrapolated) = 0.0270 W/kg  
**SAR(1 g) = 0.054 W/kg; SAR(10 g) = 0.037 W/kg**  
Maximum value of SAR (measured) = 0.0181 W/kg



0 dB = 0.0181 W/kg