



REPORT No.: SZ21010316S01

Annex D Plots of Maximum SAR Test Results

GSM850_GPRS(4 TX slots)_Right Cheek_Ch189

Communication System: UID 0, GSM850(class 12) (0); Frequency: 836.4 MHz; Duty Cycle: 1:2.08
Medium: HSL_835 Medium parameters used: $f = 836.4$ MHz; $\sigma = 0.943$ S/m; $\epsilon_r = 42.978$; $\rho = 1000$ kg/m³

Ambient Temperature : 23.2 °C; Liquid Temperature : 22.1 °C

DASY5 Configuration:

- Probe: EX3DV4 - SN7608; ConvF(9.57, 9.57, 9.57) @ 836.4 MHz; Calibrated: 2020.11.27
- Sensor-Surface: 2mm (Mechanical Surface Detection)
- Electronics: DAE4 Sn1643; Calibrated: 2020.11.30
- Phantom: Twin-SAM; Type: QD 000 P41 Ax; Serial: 2020
- Measurement SW: DASY52, Version 52.10 (4); SEMCAD X Version 14.6.14 (7483)

Ch189/Area Scan (71x91x1): Interpolated grid: dx=1.500 mm, dy=1.500 mm

Maximum value of SAR (interpolated) = 0.425 W/kg

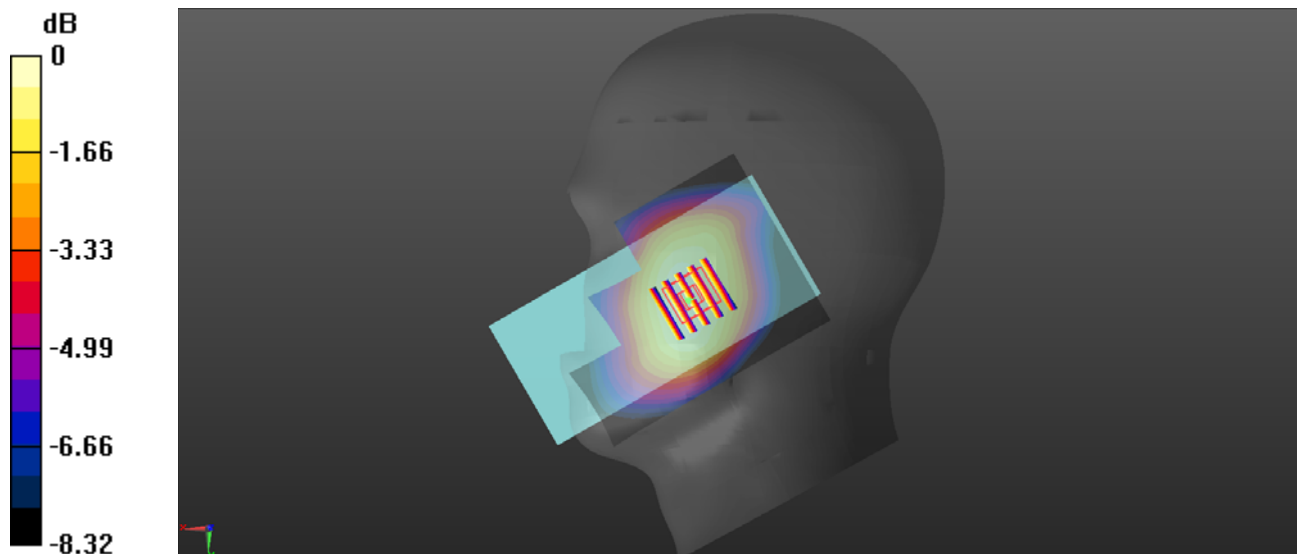
Ch189/Zoom Scan (5x5x7)/Cube 0: Measurement grid: dx=8mm, dy=8mm, dz=5mm

Reference Value = 7.437 V/m; Power Drift = -0.08 dB

Peak SAR (extrapolated) = 0.453 W/kg

SAR(1 g) = 0.369 W/kg; SAR(10 g) = 0.287 W/kg

Maximum value of SAR (measured) = 0.419 W/kg



GSM1900_GPRS(4 TX slots)_Right Cheek_Ch661

Communication System: UID 0, GSM1900(class 12) (0); Frequency: 1880 MHz; Duty Cycle: 1:2.08
Medium: HSL_1900 Medium parameters used: $f = 1880$ MHz; $\sigma = 1.321$ S/m; $\epsilon_r = 39.882$; $\rho = 1000$ kg/m³

Ambient Temperature : 23.2 °C; Liquid Temperature : 22.4 °C

DASY5 Configuration:

- Probe: EX3DV4 - SN7608; ConvF(8.04, 8.04, 8.04) @ 1880 MHz; Calibrated: 2020.11.27
- Sensor-Surface: 2mm (Mechanical Surface Detection)
- Electronics: DAE4 Sn1643; Calibrated: 2020.11.30
- Phantom: Twin-SAM; Type: QD 000 P41 Ax; Serial: 2020
- Measurement SW: DASY52, Version 52.10 (4); SEMCAD X Version 14.6.14 (7483)

Ch661/Area Scan (71x91x1): Interpolated grid: dx=1.500 mm, dy=1.500 mm

Maximum value of SAR (interpolated) = 0.0858 W/kg

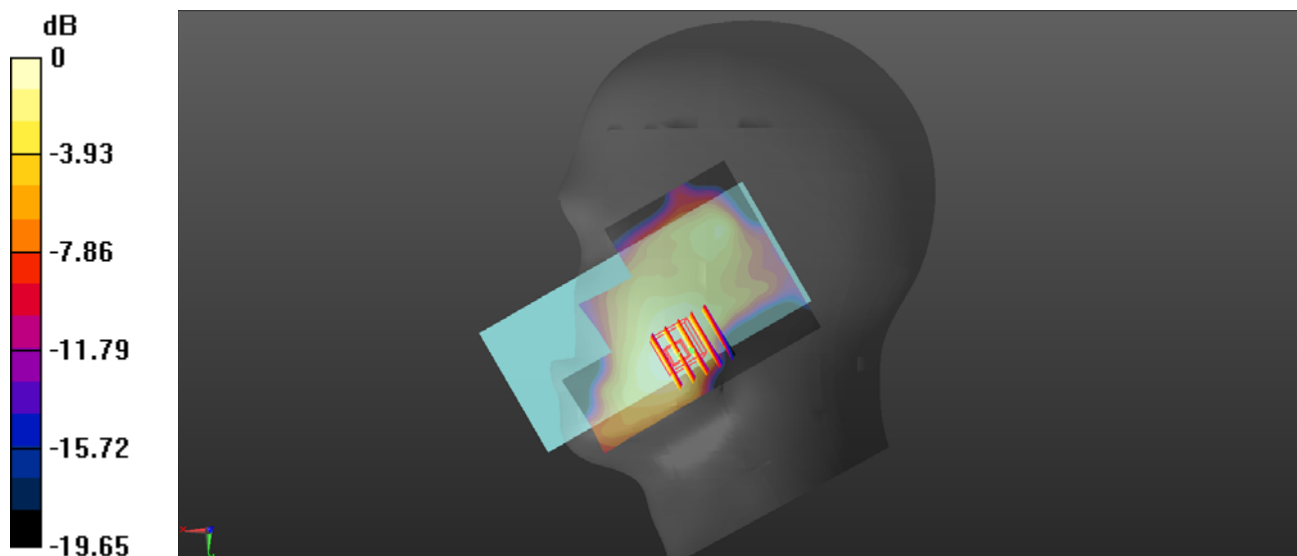
Ch661/Zoom Scan (5x5x7)/Cube 0: Measurement grid: dx=8mm, dy=8mm, dz=5mm

Reference Value = 1.801 V/m; Power Drift = 0.01 dB

Peak SAR (extrapolated) = 0.0900 W/kg

SAR(1 g) = 0.057 W/kg; SAR(10 g) = 0.035 W/kg

Maximum value of SAR (measured) = 0.0742 W/kg



0 dB = 0.0742 W/kg

WCDMA Band II_RMC 12.2Kbps_Right Cheek_Ch9400

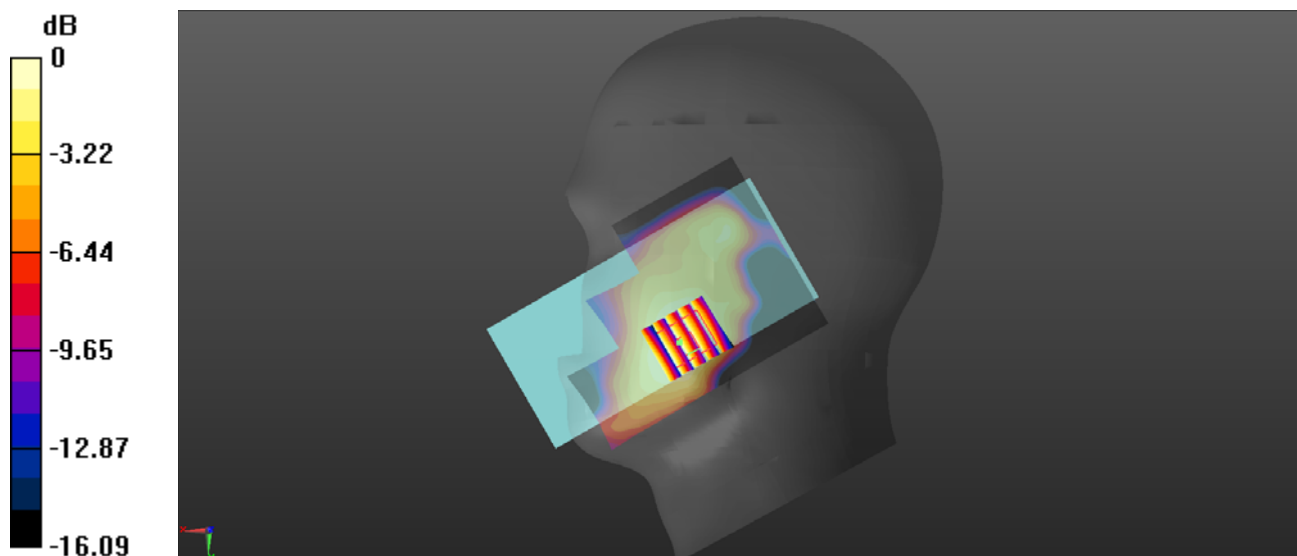
Communication System: UID 0, UMTS-FDD (0); Frequency: 1880 MHz; Duty Cycle: 1:1
Medium: HSL_1900 Medium parameters used: $f = 1880$ MHz; $\sigma = 1.321$ S/m; $\epsilon_r = 39.882$; $\rho = 1000$ kg/m³
Ambient Temperature : 23.2 °C; Liquid Temperature : 22.4 °C

DASY5 Configuration:

- Probe: EX3DV4 - SN7608; ConvF(8.04, 8.04, 8.04) @ 1880 MHz; Calibrated: 2020.11.27
- Sensor-Surface: 2mm (Mechanical Surface Detection)
- Electronics: DAE4 Sn1643; Calibrated: 2020.11.30
- Phantom: Twin-SAM; Type: QD 000 P41 Ax; Serial: 2020
- Measurement SW: DASY52, Version 52.10 (4); SEMCAD X Version 14.6.14 (7483)

Ch9400/Area Scan (71x91x1): Interpolated grid: dx=1.500 mm, dy=1.500 mm
Maximum value of SAR (interpolated) = 0.0944 W/kg

Ch9400/Zoom Scan (5x5x7)/Cube 0: Measurement grid: dx=8mm, dy=8mm, dz=5mm
Reference Value = 1.969 V/m; Power Drift = 0.07 dB
Peak SAR (extrapolated) = 0.114 W/kg
SAR(1 g) = 0.073 W/kg; SAR(10 g) = 0.046 W/kg
Maximum value of SAR (measured) = 0.0915 W/kg



0 dB = 0.0915 W/kg

WCDMA Band IV_RMC 12.2Kbps_Right Cheek_Ch1413

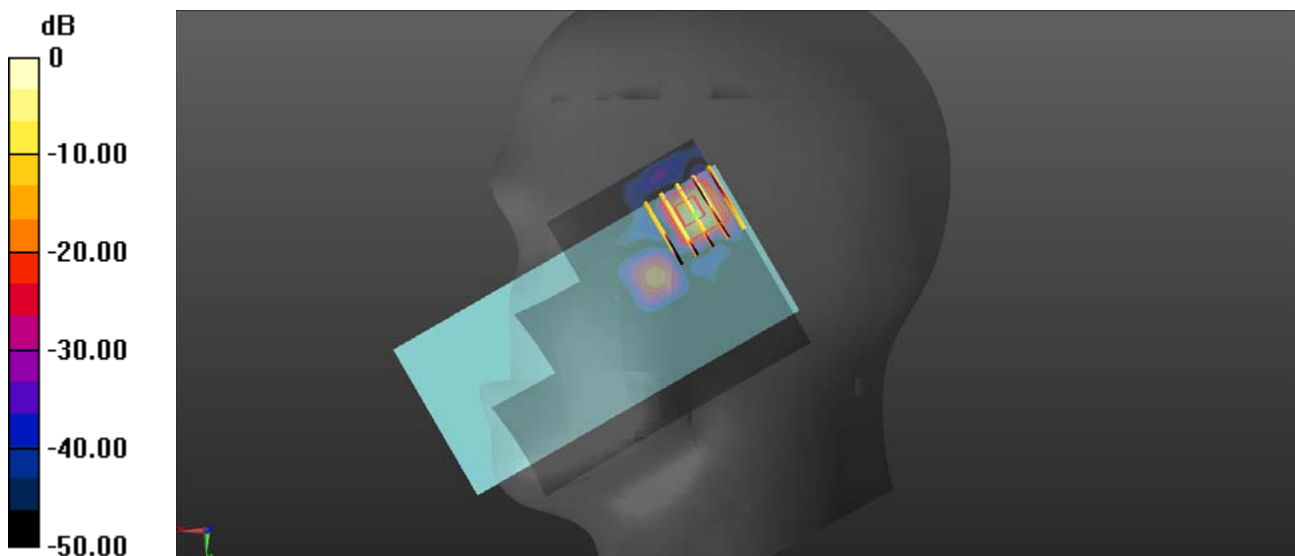
Communication System: UID 0, UMTS-FDD (0); Frequency: 1732.6 MHz; Duty Cycle: 1:1
Medium: HSL_1750 Medium parameters used: $f = 1733$ MHz; $\sigma = 1.412$ S/m; $\epsilon_r = 39.814$; $\rho = 1000$ kg/m³
Ambient Temperature : 23.2 °C; Liquid Temperature : 22.4 °C

DASY5 Configuration:

- Probe: EX3DV4 - SN7608; ConvF(8.32, 8.32, 8.32) @ 1732.6 MHz; Calibrated: 2020.11.27
- Sensor-Surface: 2mm (Mechanical Surface Detection)
- Electronics: DAE4 Sn1643; Calibrated: 2020.11.30
- Phantom: Twin-SAM; Type: QD 000 P41 Ax; Serial: 2020
- Measurement SW: DASY52, Version 52.10 (4); SEMCAD X Version 14.6.14 (7483)

Ch1413/Area Scan (71x91x1): Interpolated grid: dx=1.500 mm, dy=1.500 mm
Maximum value of SAR (interpolated) = 0.0142 W/kg

Ch1413/Zoom Scan (5x5x7)/Cube 0: Measurement grid: dx=8mm, dy=8mm, dz=5mm
Reference Value = 1.135 V/m; Power Drift = 0.06 dB
Peak SAR (extrapolated) = 0.0270 W/kg
SAR(1 g) = 0.022 W/kg; SAR(10 g) = 0.014 W/kg
Maximum value of SAR (measured) = 0.0141 W/kg



0 dB = 0.0141 W/kg

WCDMA Band V_RMC 12.2Kbps_Right Cheek_Ch4182

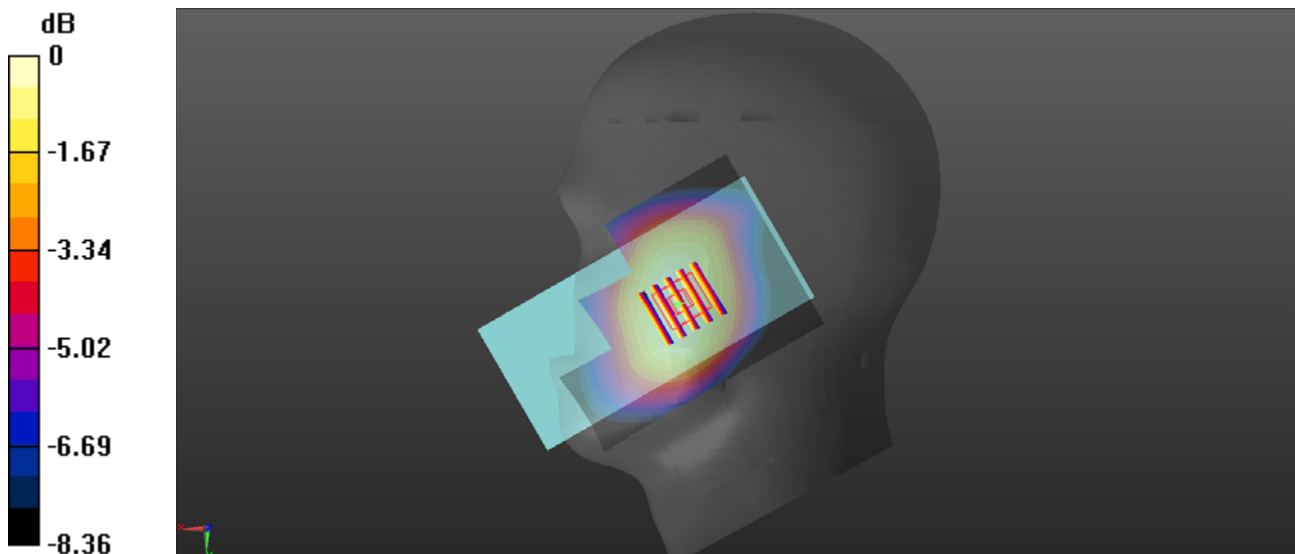
Communication System: UID 0, UMTS-FDD (0); Frequency: 836.4 MHz; Duty Cycle: 1:1
Medium: HSL_835 Medium parameters used: $f = 836.4$ MHz; $\sigma = 0.943$ S/m; $\epsilon_r = 42.978$; $\rho = 1000$ kg/m³
Ambient Temperature : 23.2 °C; Liquid Temperature : 22.1 °C

DASY5 Configuration:

- Probe: EX3DV4 - SN7608; ConvF(9.57, 9.57, 9.57) @ 836.4 MHz; Calibrated: 2020.11.27
- Sensor-Surface: 2mm (Mechanical Surface Detection)
- Electronics: DAE4 Sn1643; Calibrated: 2020.11.30
- Phantom: Twin-SAM; Type: QD 000 P41 Ax; Serial: 2020
- Measurement SW: DASY52, Version 52.10 (4); SEMCAD X Version 14.6.14 (7483)

Ch4182/Area Scan (71x91x1): Interpolated grid: dx=1.500 mm, dy=1.500 mm
Maximum value of SAR (interpolated) = 0.231 W/kg

Ch4182/Zoom Scan (5x5x7)/Cube 0: Measurement grid: dx=8mm, dy=8mm, dz=5mm
Reference Value = 5.123 V/m; Power Drift = 0.01 dB
Peak SAR (extrapolated) = 0.254 W/kg
SAR(1 g) = 0.204 W/kg; SAR(10 g) = 0.158 W/kg
Maximum value of SAR (measured) = 0.232 W/kg



0 dB = 0.232 W/kg

LTE Band 2_20MHz_QPSK_1RB_0Offset_Right Cheek_Ch18900

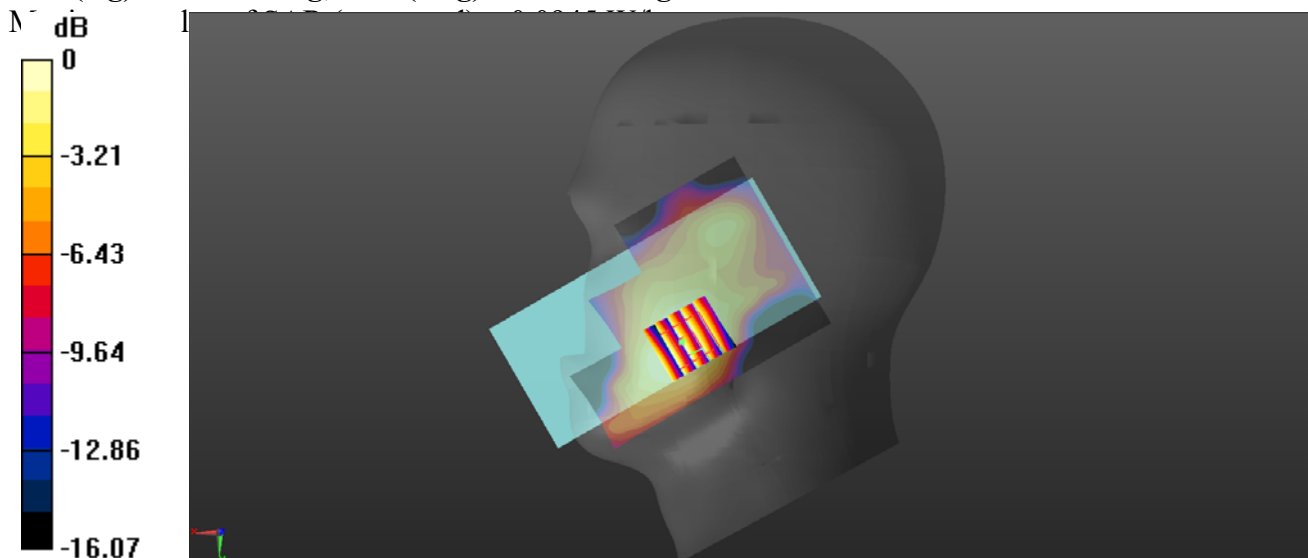
Communication System: UID 0, LTE (0); Frequency: 1880 MHz; Duty Cycle: 1:1
Medium: HSL_1900 Medium parameters used: $f = 1880$ MHz; $\sigma = 1.321$ S/m; $\epsilon_r = 39.882$; $\rho = 1000$ kg/m³
Ambient Temperature : 23.2 °C; Liquid Temperature : 22.4 °C

DASY5 Configuration:

- Probe: EX3DV4 - SN7608; ConvF(8.04, 8.04, 8.04) @ 1880 MHz; Calibrated: 2020.11.27
- Sensor-Surface: 2mm (Mechanical Surface Detection)
- Electronics: DAE4 Sn1643; Calibrated: 2020.11.30
- Phantom: Twin-SAM; Type: QD 000 P41 Ax; Serial: 2020
- Measurement SW: DASY52, Version 52.10 (4); SEMCAD X Version 14.6.14 (7483)

Ch18900/Area Scan (71x91x1): Interpolated grid: dx=1.500 mm, dy=1.500 mm
Maximum value of SAR (interpolated) = 0.0995 W/kg

Ch18900/Zoom Scan (5x5x7)/Cube 0: Measurement grid: dx=8mm, dy=8mm, dz=5mm
Reference Value = 2.447 V/m; Power Drift = 0.04 dB
Peak SAR (extrapolated) = 0.119 W/kg
SAR(1 g) = 0.074 W/kg; SAR(10 g) = 0.046 W/kg



0 dB = 0.0945 W/kg

LTE Band 4_20MHz_QPSK_1RB_0Offset_Right Cheek_Ch20175

Communication System: UID 0, LTE (0); Frequency: 1732.5 MHz; Duty Cycle: 1:1

Medium: HSL_1750 Medium parameters used: $f = 1733$ MHz; $\sigma = 1.412$ S/m; $\epsilon_r = 39.814$; $\rho = 1000$ kg/m³

Ambient Temperature : 23.2 °C; Liquid Temperature : 22.4 °C

DASY5 Configuration:

- Probe: EX3DV4 - SN7608; ConvF(8.32, 8.32, 8.32) @ 1732.5 MHz; Calibrated: 2020.11.27
- Sensor-Surface: 2mm (Mechanical Surface Detection)
- Electronics: DAE4 Sn1643; Calibrated: 2020.11.30
- Phantom: Twin-SAM; Type: QD 000 P41 Ax; Serial: 2020
- Measurement SW: DASY52, Version 52.10 (4); SEMCAD X Version 14.6.14 (7483)

Ch20175/Area Scan (71x91x1): Interpolated grid: dx=1.500 mm, dy=1.500 mm

Maximum value of SAR (interpolated) = 0.0140 W/kg

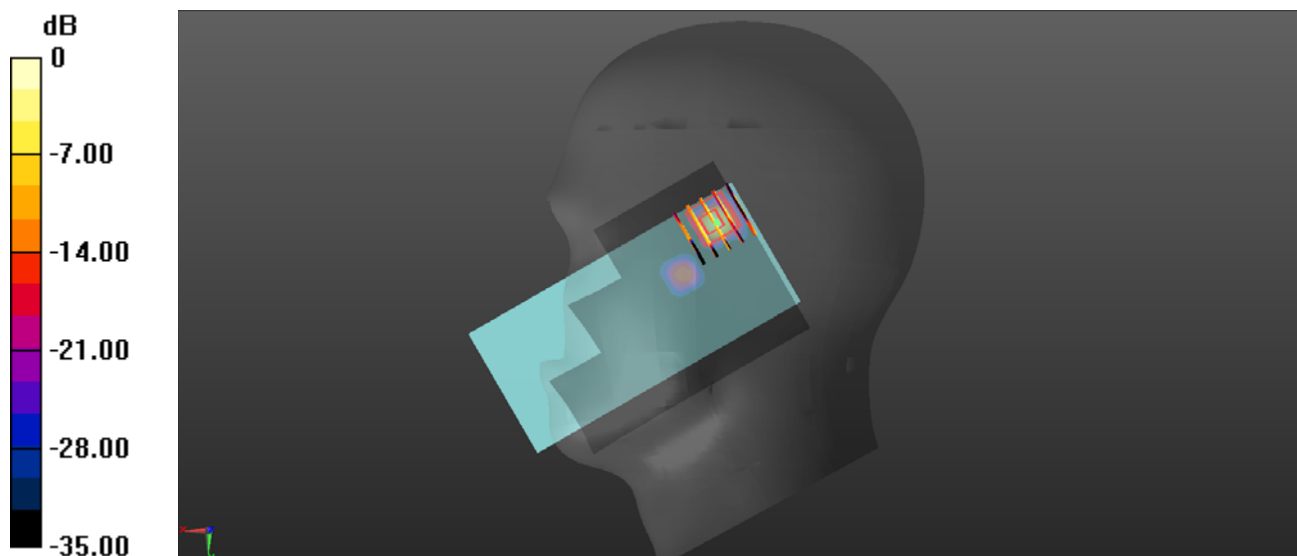
Ch20175/Zoom Scan (5x5x7)/Cube 0: Measurement grid: dx=8mm, dy=8mm, dz=5mm

Reference Value = 1.025 V/m; Power Drift = 0.09 dB

Peak SAR (extrapolated) = 0.0300 W/kg

SAR(1 g) = 0.023 W/kg; SAR(10 g) = 0.014 W/kg

Maximum value of SAR (measured) = 0.0134 W/kg



0 dB = 0.0134 W/kg

LTE Band 5_10MHz_QPSK_1RB_0Offset_Right Cheek_Ch20525

Communication System: UID 0, LTE (0); Frequency: 836.5 MHz; Duty Cycle: 1:1

Medium: HSL_835 Medium parameters used: $f = 836.5$ MHz; $\sigma = 0.943$ S/m; $\epsilon_r = 42.967$; $\rho = 1000$ kg/m³

Ambient Temperature : 23.2 °C; Liquid Temperature : 22.1 °C

DASY5 Configuration:

- Probe: EX3DV4 - SN7608; ConvF(9.57, 9.57, 9.57) @ 836.5 MHz; Calibrated: 2020.11.27
- Sensor-Surface: 2mm (Mechanical Surface Detection)
- Electronics: DAE4 Sn1643; Calibrated: 2020.11.30
- Phantom: Twin-SAM; Type: QD 000 P41 Ax; Serial: 2020
- Measurement SW: DASY52, Version 52.10 (4); SEMCAD X Version 14.6.14 (7483)

Ch20525/Area Scan (71x91x1): Interpolated grid: dx=1.500 mm, dy=1.500 mm

Maximum value of SAR (interpolated) = 0.277 W/kg

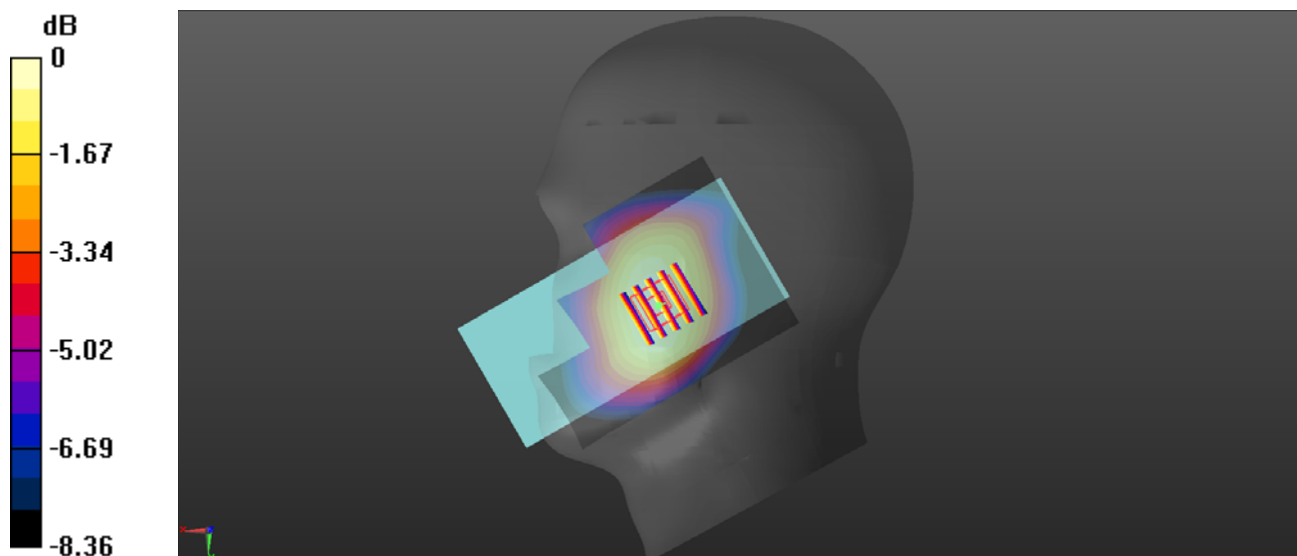
Ch20525/Zoom Scan (5x5x7)/Cube 0: Measurement grid: dx=8mm, dy=8mm, dz=5mm

Reference Value = 5.370 V/m; Power Drift = 0.07 dB

Peak SAR (extrapolated) = 0.303 W/kg

SAR(1 g) = 0.243 W/kg; SAR(10 g) = 0.187 W/kg

Maximum value of SAR (measured) = 0.278 W/kg



0 dB = 0.278 W/kg

LTE Band 7_20MHz_QPSK_1RB_0Offset_Right Cheek_Ch21100

Communication System: UID 0, LTE (0); Frequency: 2535 MHz; Duty Cycle: 1:1

Medium: HSL_2600 Medium parameters used: $f = 2535$ MHz; $\sigma = 1.911$ S/m; $\epsilon_r = 38.489$; $\rho = 1000$ kg/m³

Ambient Temperature : 23.2 °C; Liquid Temperature : 22.2 °C

DASY5 Configuration:

- Probe: EX3DV4 - SN7608; ConvF(7.4, 7.4, 7.4) @ 2535 MHz; Calibrated: 2020.11.27
- Sensor-Surface: 2mm (Mechanical Surface Detection)
- Electronics: DAE4 Sn1643; Calibrated: 2020.11.30
- Phantom: Twin-SAM; Type: QD 000 P41 Ax; Serial: 2020
- Measurement SW: DASY52, Version 52.10 (4); SEMCAD X Version 14.6.14 (7483)

Ch21100/Area Scan (81x111x1): Interpolated grid: dx=1.200 mm, dy=1.200 mm

Maximum value of SAR (interpolated) = 0.132 W/kg

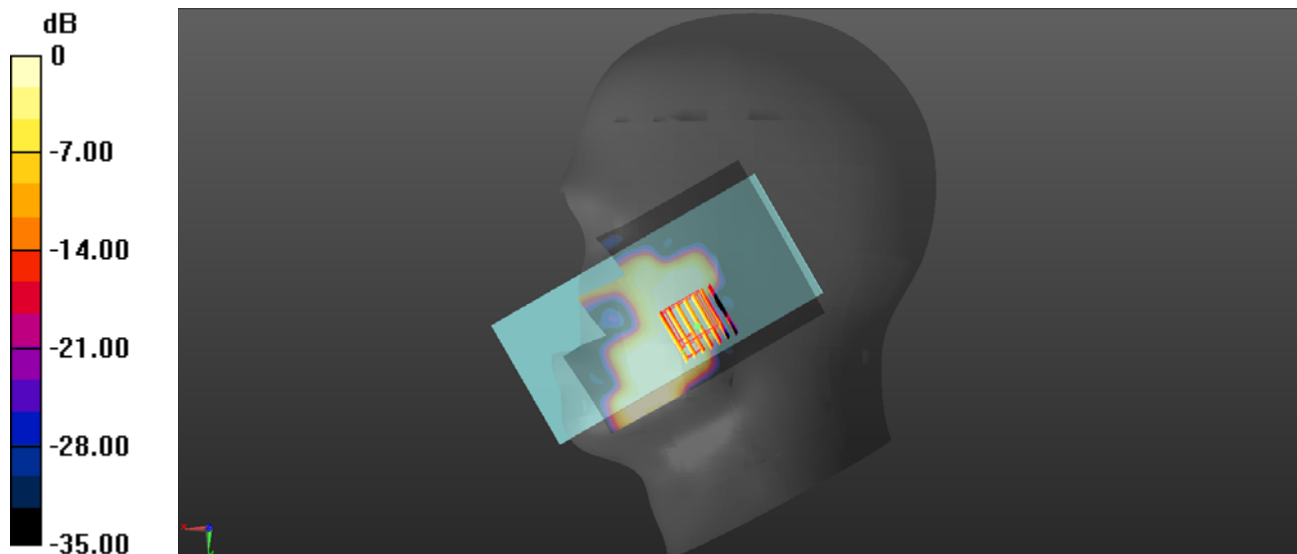
Ch21100/Zoom Scan (7x7x7)/Cube 0: Measurement grid: dx=5mm, dy=5mm, dz=5mm

Reference Value = 0 V/m; Power Drift = 0.01 dB

Peak SAR (extrapolated) = 0.246 W/kg

SAR(1 g) = 0.045 W/kg; SAR(10 g) = 0.024 W/kg

Maximum value of SAR (measured) = 0.0673 W/kg



0 dB = 0.0673 W/kg

LTE Band 12_10MHz_QPSK_1RB_0Offset_Right Cheek_Ch23095

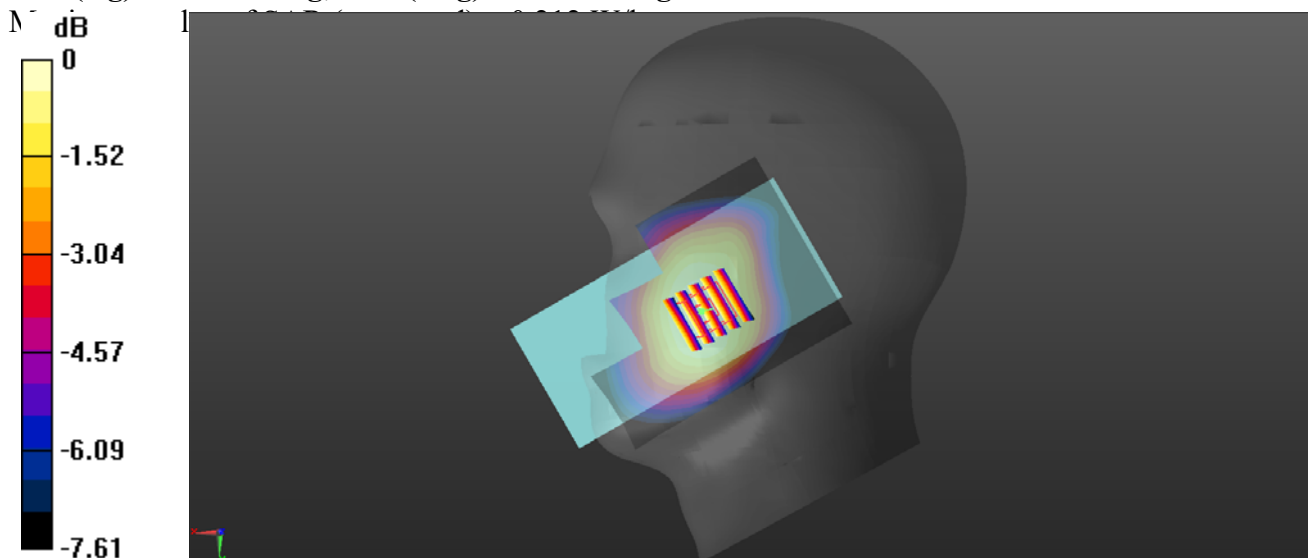
Communication System: UID 0, LTE (0); Frequency: 707.5 MHz; Duty Cycle: 1:1
Medium: HSL_750 Medium parameters used: $f = 707.5$ MHz; $\sigma = 0.848$ S/m; $\epsilon_r = 44.777$; $\rho = 1000$ kg/m³
Ambient Temperature : 23.2 °C; Liquid Temperature : 22.1 °C

DASY5 Configuration:

- Probe: EX3DV4 - SN7608; ConvF(9.76, 9.76, 9.76) @ 707.5 MHz; Calibrated: 2020.11.27
- Sensor-Surface: 2mm (Mechanical Surface Detection)
- Electronics: DAE4 Sn1643; Calibrated: 2020.11.30
- Phantom: Twin-SAM; Type: QD 000 P41 Ax; Serial: 2020
- Measurement SW: DASY52, Version 52.10 (4); SEMCAD X Version 14.6.14 (7483)

Ch23095/Area Scan (71x91x1): Interpolated grid: dx=1.500 mm, dy=1.500 mm
Maximum value of SAR (interpolated) = 0.209 W/kg

Ch23095/Zoom Scan (5x5x7)/Cube 0: Measurement grid: dx=8mm, dy=8mm, dz=5mm
Reference Value = 4.627 V/m; Power Drift = 0.09 dB
Peak SAR (extrapolated) = 0.228 W/kg
SAR(1 g) = 0.188 W/kg; SAR(10 g) = 0.147 W/kg



LTE Band 13_10MHz_QPSK_1RB_0Offset_Right Cheek_Ch23230

Communication System: UID 0, LTE (0); Frequency: 782 MHz; Duty Cycle: 1:1

Medium: HSL_750 Medium parameters used: $f = 782 \text{ MHz}$; $\sigma = 0.885 \text{ S/m}$; $\epsilon_r = 43.316$; $\rho = 1000 \text{ kg/m}^3$

Ambient Temperature : $23.2 \text{ }^\circ\text{C}$; Liquid Temperature : $22.1 \text{ }^\circ\text{C}$

DASY5 Configuration:

- Probe: EX3DV4 - SN7608; ConvF(9.76, 9.76, 9.76) @ 782 MHz; Calibrated: 2020.11.27
- Sensor-Surface: 2mm (Mechanical Surface Detection)
- Electronics: DAE4 Sn1643; Calibrated: 2020.11.30
- Phantom: Twin-SAM; Type: QD 000 P41 Ax; Serial: 2020
- Measurement SW: DASY52, Version 52.10 (4); SEMCAD X Version 14.6.14 (7483)

Ch23230/Area Scan (71x91x1): Interpolated grid: $dx=1.500 \text{ mm}$, $dy=1.500 \text{ mm}$

Maximum value of SAR (interpolated) = 0.103 W/kg

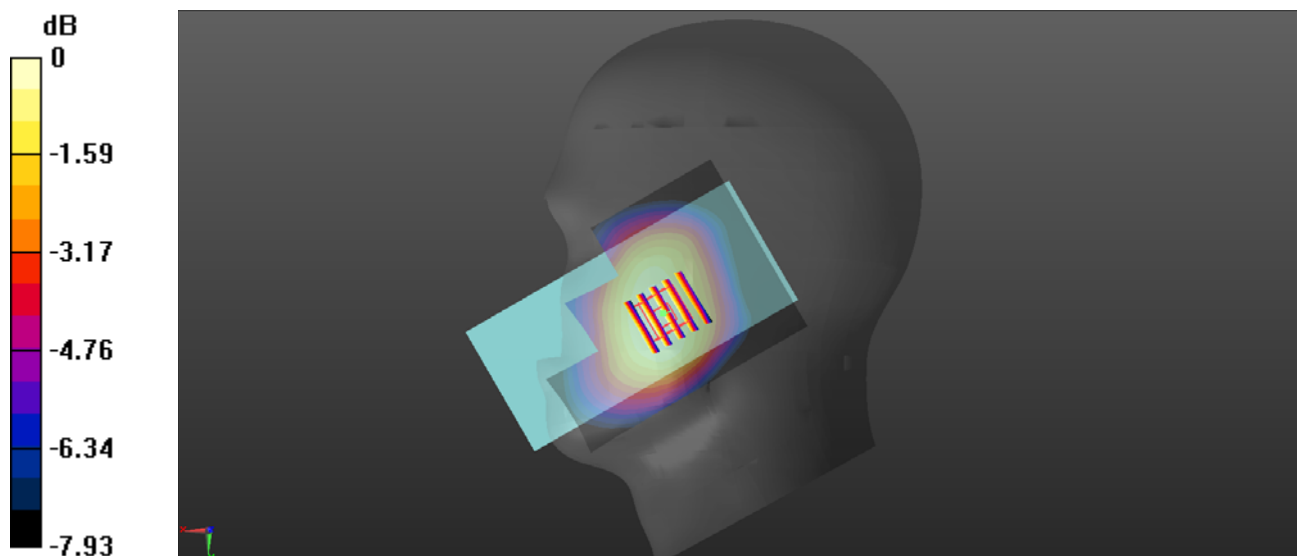
Ch23230/Zoom Scan (5x5x7)/Cube 0: Measurement grid: $dx=8\text{mm}$, $dy=8\text{mm}$, $dz=5\text{mm}$

Reference Value = 2.845 V/m ; Power Drift = 0.07 dB

Peak SAR (extrapolated) = 0.111 W/kg

SAR(1 g) = 0.089 W/kg ; SAR(10 g) = 0.068 W/kg

Maximum value of SAR (measured) = 0.101 W/kg



0 dB = 0.101 W/kg

WLAN 2.4GHz_802.11b 1Mbps_Left Cheek_Ch13

Communication System: UID 0, WLAN 2.4GHz 802.11b (0); Frequency: 2472 MHz; Duty Cycle: 1:1
Medium: HSL_2450 Medium parameters used: $f = 2472$ MHz; $\sigma = 1.834$ S/m; $\epsilon_r = 38.696$; $\rho = 1000$ kg/m³

Ambient Temperature : 23.2 °C; Liquid Temperature : 22.1 °C

DASY5 Configuration:

- Probe: EX3DV4 - SN7608; ConvF(7.58, 7.58, 7.58) @ 2472 MHz; Calibrated: 2020.11.27
- Sensor-Surface: 2mm (Mechanical Surface Detection)
- Electronics: DAE4 Sn1643; Calibrated: 2020.11.30
- Phantom: Twin-SAM; Type: QD 000 P41 Ax; Serial: 2020
- Measurement SW: DASY52, Version 52.10 (4); SEMCAD X Version 14.6.14 (7483)

Ch13/Area Scan (81x91x1): Interpolated grid: dx=1.200 mm, dy=1.200 mm

Maximum value of SAR (interpolated) = 1.60 W/kg

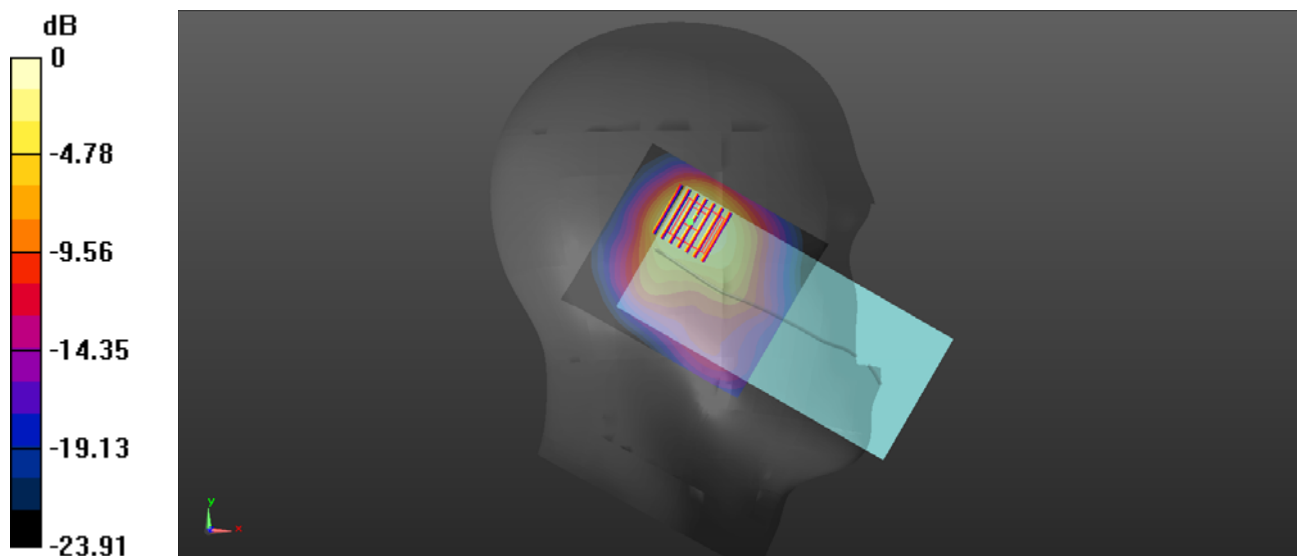
Ch13/Zoom Scan (7x7x7)/Cube 0: Measurement grid: dx=5mm, dy=5mm, dz=5mm

Reference Value = 12.56 V/m; Power Drift = 0.01 dB

Peak SAR (extrapolated) = 2.08 W/kg

SAR(1 g) = 1 W/kg; SAR(10 g) = 0.509 W/kg

Maximum value of SAR (measured) = 1.48 W/kg



0 dB = 1.48 W/kg

GSM850_GPRS(4 TX slots)_Back Side_10mm_Ch189

Communication System: UID 0, GSM850(class 12) (0); Frequency: 836.4 MHz; Duty Cycle: 1:2.08
Medium: HSL_835 Medium parameters used: $f = 836.4$ MHz; $\sigma = 0.943$ S/m; $\epsilon_r = 42.978$; $\rho = 1000$ kg/m³

Ambient Temperature : 23.2 °C; Liquid Temperature : 22.1 °C

DASY5 Configuration:

- Probe: EX3DV4 - SN7608; ConvF(9.57, 9.57, 9.57) @ 836.4 MHz; Calibrated: 2020.11.27
- Sensor-Surface: 2mm (Mechanical Surface Detection)
- Electronics: DAE4 Sn1643; Calibrated: 2020.11.30
- Phantom: Twin-SAM; Type: QD 000 P41 Ax; Serial: 2020
- Measurement SW: DASY52, Version 52.10 (4); SEMCAD X Version 14.6.14 (7483)

Ch189/Area Scan (71x121x1): Interpolated grid: dx=1.500 mm, dy=1.500 mm

Maximum value of SAR (interpolated) = 0.566 W/kg

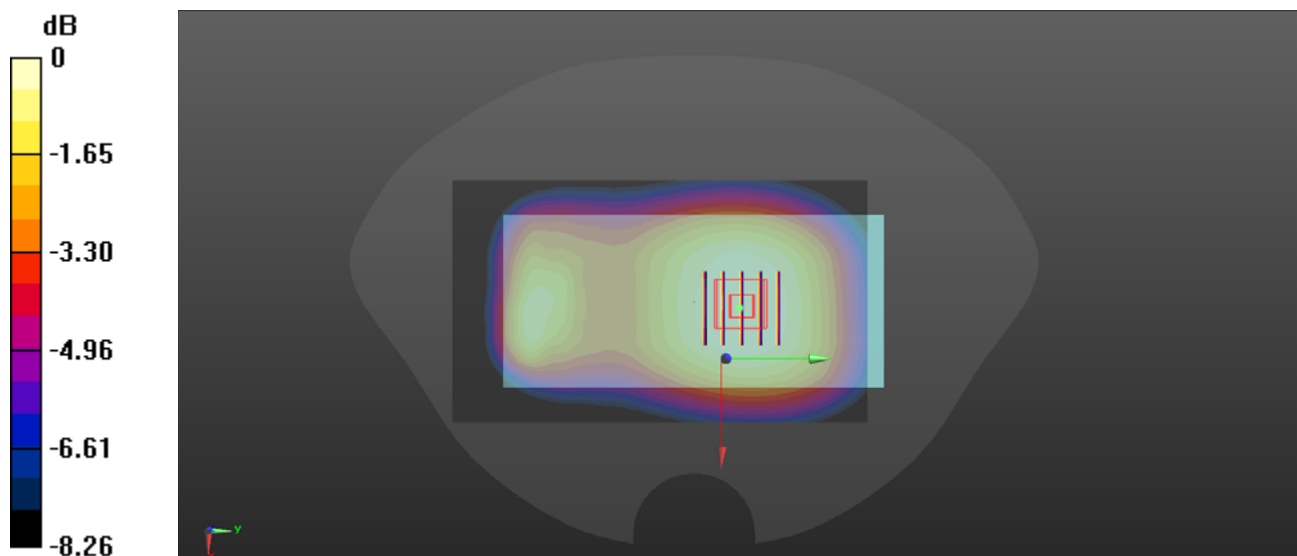
Ch189/Zoom Scan (5x5x7)/Cube 0: Measurement grid: dx=8mm, dy=8mm, dz=5mm

Reference Value = 22.23 V/m; Power Drift = -0.06 dB

Peak SAR (extrapolated) = 0.616 W/kg

SAR(1 g) = 0.478 W/kg; SAR(10 g) = 0.358 W/kg

Maximum value of SAR (measured) = 0.554 W/kg



0 dB = 0.554 W/kg

GSM1900_GPRS(4 TX slots)_Back Side_10mm_Ch661

Communication System: UID 0, GSM1900(class 12) (0); Frequency: 1880 MHz; Duty Cycle: 1:2.08
Medium: HSL_1900 Medium parameters used: $f = 1880$ MHz; $\sigma = 1.321$ S/m; $\epsilon_r = 39.882$; $\rho = 1000$ kg/m³

Ambient Temperature : 23.2 °C; Liquid Temperature : 22.4 °C

DASY5 Configuration:

- Probe: EX3DV4 - SN7608; ConvF(8.04, 8.04, 8.04) @ 1880 MHz; Calibrated: 2020.11.27
- Sensor-Surface: 2mm (Mechanical Surface Detection)
- Electronics: DAE4 Sn1643; Calibrated: 2020.11.30
- Phantom: Twin-SAM; Type: QD 000 P41 Ax; Serial: 2020
- Measurement SW: DASY52, Version 52.10 (4); SEMCAD X Version 14.6.14 (7483)

Ch661/Area Scan (71x81x1): Interpolated grid: dx=1.500 mm, dy=1.500 mm

Maximum value of SAR (interpolated) = 0.288 W/kg

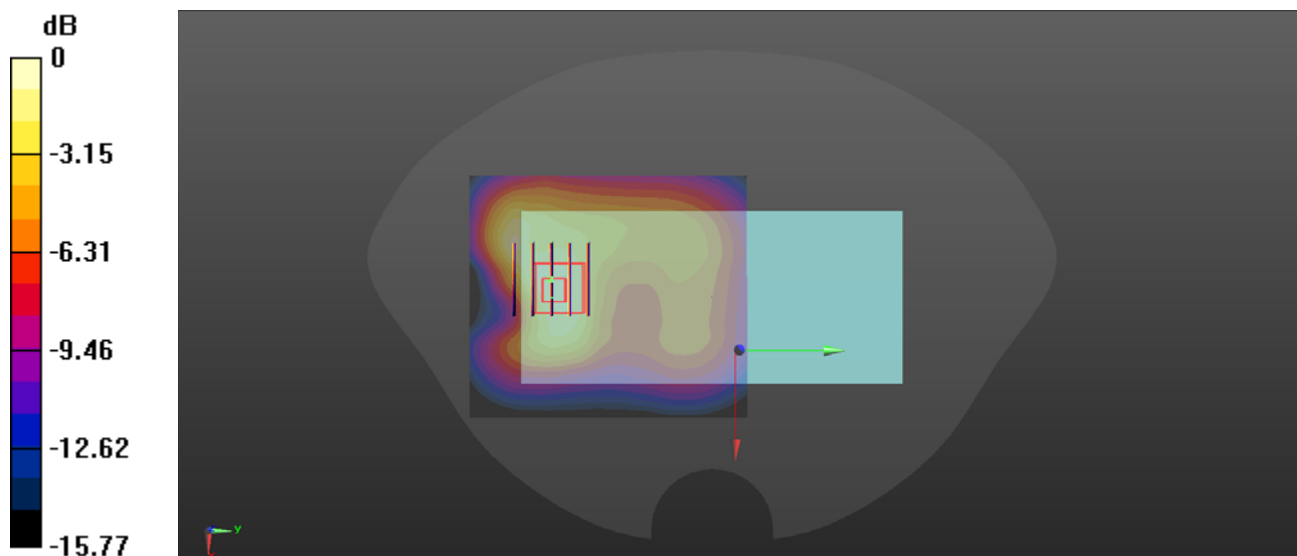
Ch661/Zoom Scan (5x5x7)/Cube 0: Measurement grid: dx=8mm, dy=8mm, dz=5mm

Reference Value = 6.276 V/m; Power Drift = 0.01 dB

Peak SAR (extrapolated) = 0.392 W/kg

SAR(1 g) = 0.208 W/kg; SAR(10 g) = 0.109 W/kg

Maximum value of SAR (measured) = 0.284 W/kg



0 dB = 0.284 W/kg

GSM1900_GPRS(4 TX slots)_Bottom Side_10mm_Ch661

Communication System: UID 0, GSM1900(class 12) (0); Frequency: 1880 MHz; Duty Cycle: 1:2.08
Medium: HSL_1900 Medium parameters used: $f = 1880$ MHz; $\sigma = 1.321$ S/m; $\epsilon_r = 39.882$; $\rho = 1000$ kg/m³

Ambient Temperature : 23.2 °C; Liquid Temperature : 22.4 °C

DASY5 Configuration:

- Probe: EX3DV4 - SN7608; ConvF(8.04, 8.04, 8.04) @ 1880 MHz; Calibrated: 2020.11.27
- Sensor-Surface: 2mm (Mechanical Surface Detection)
- Electronics: DAE4 Sn1643; Calibrated: 2020.11.30
- Phantom: Twin-SAM; Type: QD 000 P41 Ax; Serial: 2020
- Measurement SW: DASY52, Version 52.10 (4); SEMCAD X Version 14.6.14 (7483)

Ch661/Area Scan (41x81x1): Interpolated grid: dx=1.500 mm, dy=1.500 mm

Maximum value of SAR (interpolated) = 0.379 W/kg

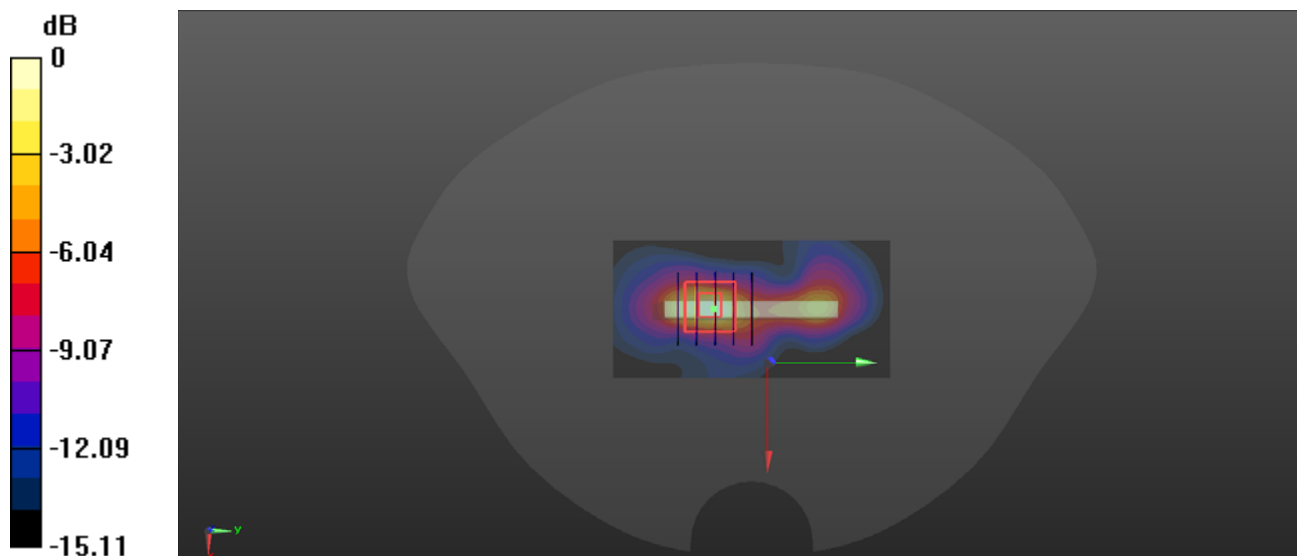
Ch661/Zoom Scan (5x5x7)/Cube 0: Measurement grid: dx=8mm, dy=8mm, dz=5mm

Reference Value = 7.110 V/m; Power Drift = 0.03 dB

Peak SAR (extrapolated) = 0.521 W/kg

SAR(1 g) = 0.243 W/kg; SAR(10 g) = 0.102 W/kg

Maximum value of SAR (measured) = 0.376 W/kg



0 dB = 0.376 W/kg

WCDMA Band II_RMC 12.2Kbps_Back Side_10mm_Ch9400

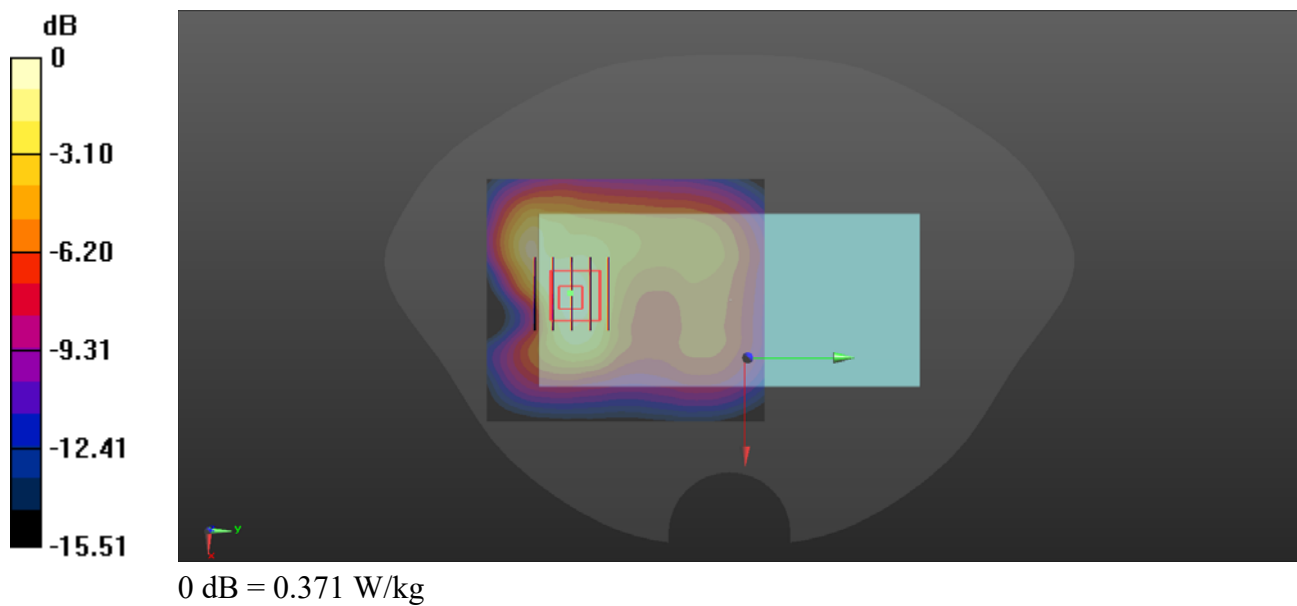
Communication System: UID 0, UMTS-FDD (0); Frequency: 1880 MHz; Duty Cycle: 1:1
Medium: HSL_1900 Medium parameters used: $f = 1880$ MHz; $\sigma = 1.321$ S/m; $\epsilon_r = 39.882$; $\rho = 1000$ kg/m³
Ambient Temperature : 23.2 °C; Liquid Temperature : 22.4 °C

DASY5 Configuration:

- Probe: EX3DV4 - SN7608; ConvF(8.04, 8.04, 8.04) @ 1880 MHz; Calibrated: 2020.11.27
- Sensor-Surface: 2mm (Mechanical Surface Detection)
- Electronics: DAE4 Sn1643; Calibrated: 2020.11.30
- Phantom: Twin-SAM; Type: QD 000 P41 Ax; Serial: 2020
- Measurement SW: DASY52, Version 52.10 (4); SEMCAD X Version 14.6.14 (7483)

Ch9400/Area Scan (71x81x1): Interpolated grid: dx=1.500 mm, dy=1.500 mm
Maximum value of SAR (interpolated) = 0.361 W/kg

Ch9400/Zoom Scan (5x5x7)/Cube 0: Measurement grid: dx=8mm, dy=8mm, dz=5mm
Reference Value = 7.530 V/m; Power Drift = -0.05 dB
Peak SAR (extrapolated) = 0.493 W/kg
SAR(1 g) = 0.266 W/kg; SAR(10 g) = 0.141 W/kg
Maximum value of SAR (measured) = 0.371 W/kg



WCDMA Band II_RMC 12.2Kbps_Bottom Side_10mm_Ch9400

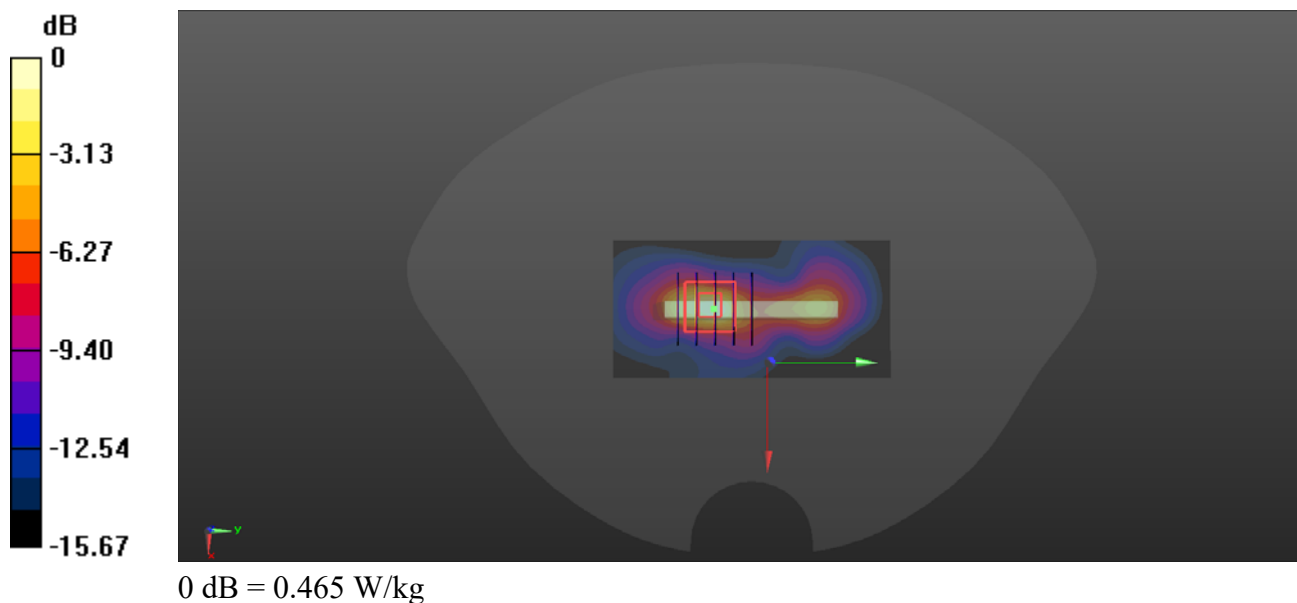
Communication System: UID 0, UMTS-FDD (0); Frequency: 1880 MHz; Duty Cycle: 1:1
Medium: HSL_1900 Medium parameters used: $f = 1880$ MHz; $\sigma = 1.321$ S/m; $\epsilon_r = 39.882$; $\rho = 1000$ kg/m³
Ambient Temperature : 23.2 °C; Liquid Temperature : 22.4 °C

DASY5 Configuration:

- Probe: EX3DV4 - SN7608; ConvF(8.04, 8.04, 8.04) @ 1880 MHz; Calibrated: 2020.11.27
- Sensor-Surface: 2mm (Mechanical Surface Detection)
- Electronics: DAE4 Sn1643; Calibrated: 2020.11.30
- Phantom: Twin-SAM; Type: QD 000 P41 Ax; Serial: 2020
- Measurement SW: DASY52, Version 52.10 (4); SEMCAD X Version 14.6.14 (7483)

Ch9400/Area Scan (41x81x1): Interpolated grid: dx=1.500 mm, dy=1.500 mm
Maximum value of SAR (interpolated) = 0.458 W/kg

Ch9400/Zoom Scan (5x5x7)/Cube 0: Measurement grid: dx=8mm, dy=8mm, dz=5mm
Reference Value = 7.806 V/m; Power Drift = 0.08 dB
Peak SAR (extrapolated) = 0.649 W/kg
SAR(1 g) = 0.302 W/kg; SAR(10 g) = 0.127 W/kg
Maximum value of SAR (measured) = 0.465 W/kg



WCDMA Band IV_RMC 12.2Kbps_Back Side_10mm_Ch1413

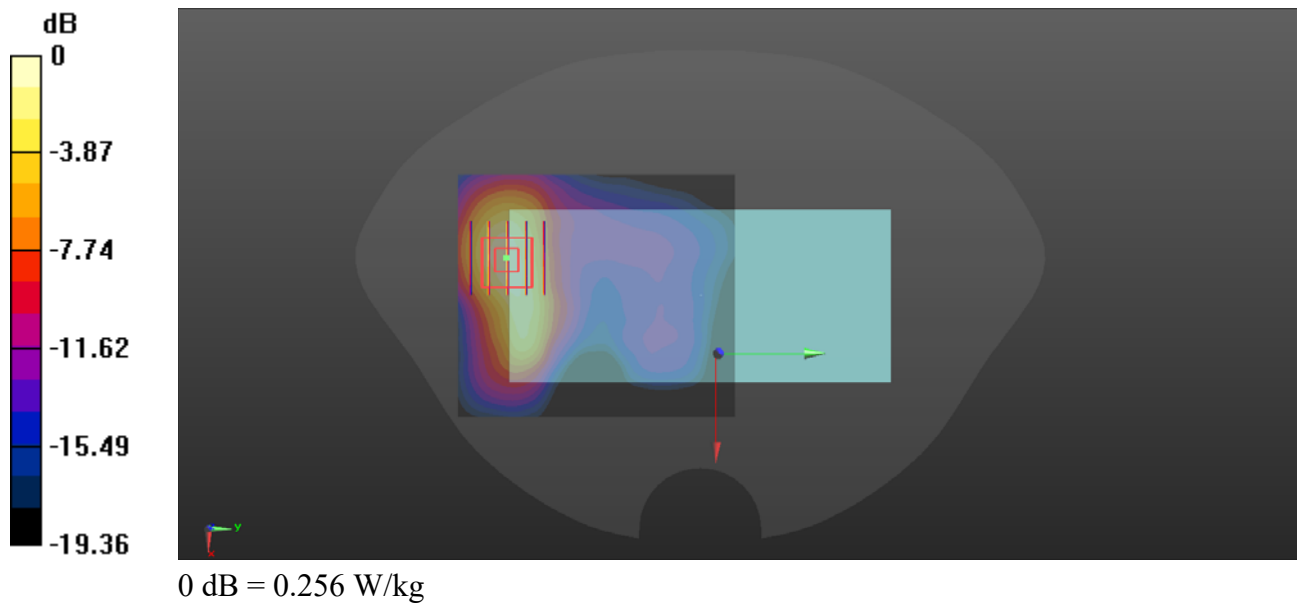
Communication System: UID 0, UMTS-FDD (0); Frequency: 1732.6 MHz; Duty Cycle: 1:1
Medium: HSL_1750 Medium parameters used: $f = 1733$ MHz; $\sigma = 1.412$ S/m; $\epsilon_r = 39.814$; $\rho = 1000$ kg/m³
Ambient Temperature : 23.2 °C; Liquid Temperature : 22.4 °C

DASY5 Configuration:

- Probe: EX3DV4 - SN7608; ConvF(8.32, 8.32, 8.32) @ 1732.6 MHz; Calibrated: 2020.11.27
- Sensor-Surface: 2mm (Mechanical Surface Detection)
- Electronics: DAE4 Sn1643; Calibrated: 2020.11.30
- Phantom: Twin-SAM; Type: QD 000 P41 Ax; Serial: 2020
- Measurement SW: DASY52, Version 52.10 (4); SEMCAD X Version 14.6.14 (7483)

Ch1413/Area Scan (71x81x1): Interpolated grid: dx=1.500 mm, dy=1.500 mm
Maximum value of SAR (interpolated) = 0.249 W/kg

Ch1413/Zoom Scan (5x5x7)/Cube 0: Measurement grid: dx=8mm, dy=8mm, dz=5mm
Reference Value = 1.651 V/m; Power Drift = 0.07 dB
Peak SAR (extrapolated) = 0.324 W/kg
SAR(1 g) = 0.181 W/kg; SAR(10 g) = 0.095 W/kg
Maximum value of SAR (measured) = 0.256 W/kg



WCDMA Band IV_RMC 12.2Kbps_Bottom Side_10mm_Ch1413

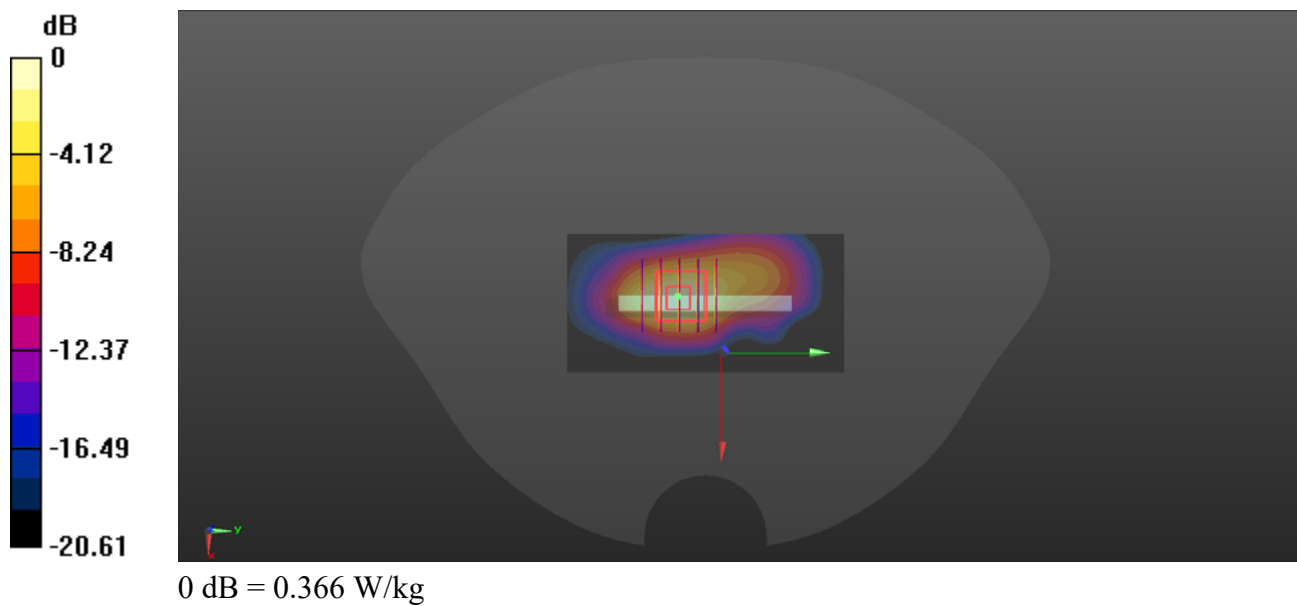
Communication System: UID 0, UMTS-FDD (0); Frequency: 1732.6 MHz; Duty Cycle: 1:1
Medium: HSL_1750 Medium parameters used: $f = 1733$ MHz; $\sigma = 1.412$ S/m; $\epsilon_r = 39.814$; $\rho = 1000$ kg/m³
Ambient Temperature : 23.2 °C; Liquid Temperature : 22.1 °C

DASY5 Configuration:

- Probe: EX3DV4 - SN7608; ConvF(8.32, 8.32, 8.32) @ 1732.6 MHz; Calibrated: 2020.11.27
- Sensor-Surface: 2mm (Mechanical Surface Detection)
- Electronics: DAE4 Sn1643; Calibrated: 2020.11.30
- Phantom: Twin-SAM; Type: QD 000 P41 Ax; Serial: 2020
- Measurement SW: DASY52, Version 52.10 (4); SEMCAD X Version 14.6.14 (7483)

Ch1413/Area Scan (41x81x1): Interpolated grid: dx=1.500 mm, dy=1.500 mm
Maximum value of SAR (interpolated) = 0.397 W/kg

Ch1413/Zoom Scan (5x5x7)/Cube 0: Measurement grid: dx=8mm, dy=8mm, dz=5mm
Reference Value = 11.79 V/m; Power Drift = -0.07 dB
Peak SAR (extrapolated) = 0.486 W/kg
SAR(1 g) = 0.248 W/kg; SAR(10 g) = 0.120 W/kg
Maximum value of SAR (measured) = 0.366 W/kg



WCDMA Band V_RMC 12.2Kbps_Back Side_10mm_Ch4182

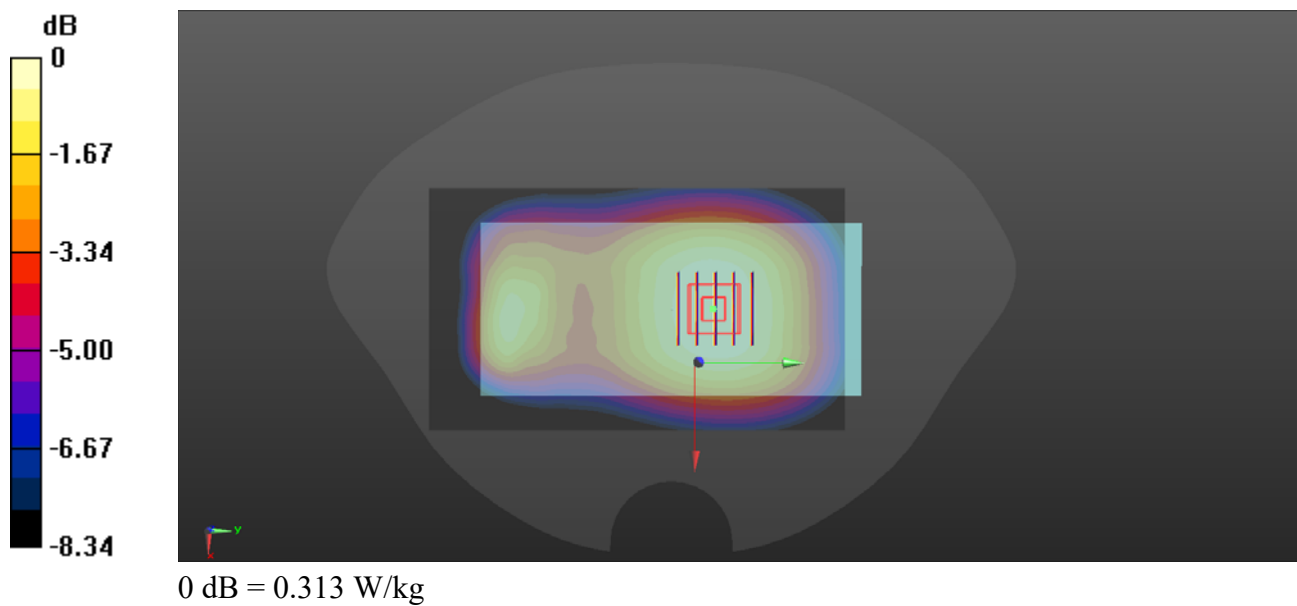
Communication System: UID 0, UMTS-FDD (0); Frequency: 836.4 MHz; Duty Cycle: 1:1
Medium: HSL_835 Medium parameters used: $f = 836.4$ MHz; $\sigma = 0.943$ S/m; $\epsilon_r = 42.978$; $\rho = 1000$ kg/m³
Ambient Temperature : 23.2 °C; Liquid Temperature : 22.1 °C

DASY5 Configuration:

- Probe: EX3DV4 - SN7608; ConvF(9.57, 9.57, 9.57) @ 836.4 MHz; Calibrated: 2020.11.27
- Sensor-Surface: 2mm (Mechanical Surface Detection)
- Electronics: DAE4 Sn1643; Calibrated: 2020.11.30
- Phantom: Twin-SAM; Type: QD 000 P41 Ax; Serial: 2020
- Measurement SW: DASY52, Version 52.10 (4); SEMCAD X Version 14.6.14 (7483)

Ch4182/Area Scan (71x121x1): Interpolated grid: dx=1.500 mm, dy=1.500 mm
Maximum value of SAR (interpolated) = 0.314 W/kg

Ch4182/Zoom Scan (5x5x7)/Cube 0: Measurement grid: dx=8mm, dy=8mm, dz=5mm
Reference Value = 16.23 V/m; Power Drift = 0.05 dB
Peak SAR (extrapolated) = 0.347 W/kg
SAR(1 g) = 0.268 W/kg; SAR(10 g) = 0.201 W/kg
Maximum value of SAR (measured) = 0.313 W/kg



LTE Band 2_20MHz_QPSK_1RB_0Offset_Back Side_10mm_Ch18900

Communication System: UID 0, LTE (0); Frequency: 1880 MHz; Duty Cycle: 1:1

Medium: HSL_1900 Medium parameters used: $f = 1880$ MHz; $\sigma = 1.321$ S/m; $\epsilon_r = 39.882$; $\rho = 1000$ kg/m³

Ambient Temperature : 23.2 °C; Liquid Temperature : 22.4 °C

DASY5 Configuration:

- Probe: EX3DV4 - SN7608; ConvF(8.04, 8.04, 8.04) @ 1880 MHz; Calibrated: 2020.11.27
- Sensor-Surface: 2mm (Mechanical Surface Detection)
- Electronics: DAE4 Sn1643; Calibrated: 2020.11.30
- Phantom: Twin-SAM; Type: QD 000 P41 Ax; Serial: 2020
- Measurement SW: DASY52, Version 52.10 (4); SEMCAD X Version 14.6.14 (7483)

Ch18900/Area Scan (71x81x1): Interpolated grid: dx=1.500 mm, dy=1.500 mm

Maximum value of SAR (interpolated) = 0.371 W/kg

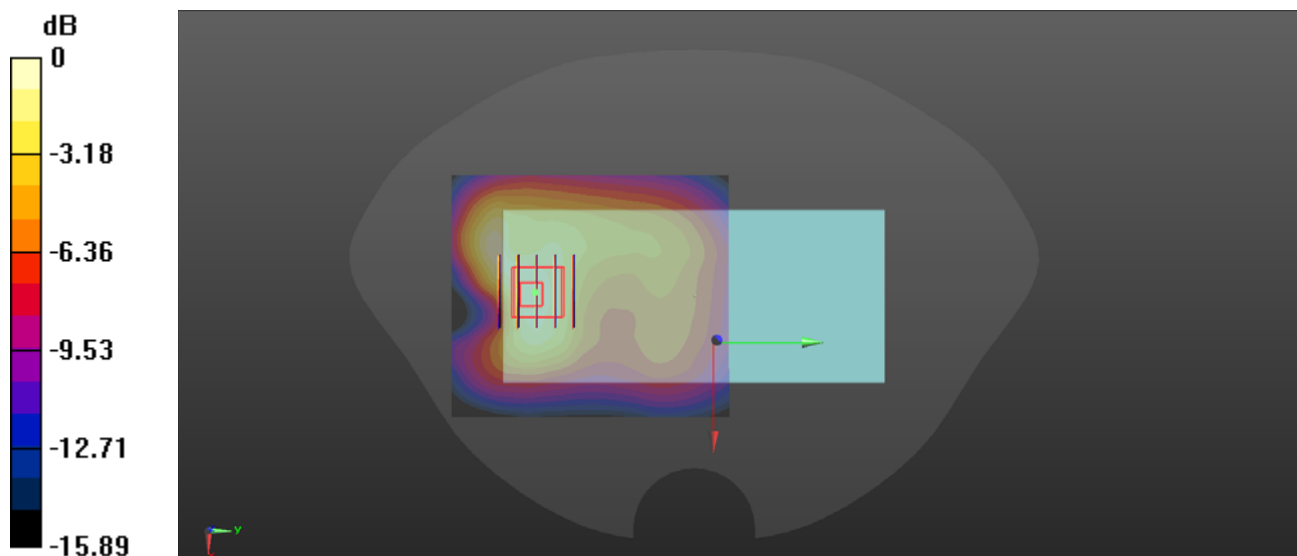
Ch18900/Zoom Scan (5x5x7)/Cube 0: Measurement grid: dx=8mm, dy=8mm, dz=5mm

Reference Value = 7.819 V/m; Power Drift = -0.04 dB

Peak SAR (extrapolated) = 0.484 W/kg

SAR(1 g) = 0.275 W/kg; SAR(10 g) = 0.150 W/kg

Maximum value of SAR (measured) = 0.375 W/kg



0 dB = 0.375 W/kg

LTE Band 2_20MHz_QPSK_1RB_0Offset_Bottom Side_10mm_Ch18900

Communication System: UID 0, LTE (0); Frequency: 1880 MHz; Duty Cycle: 1:1

Medium: HSL_1900 Medium parameters used: $f = 1880$ MHz; $\sigma = 1.321$ S/m; $\epsilon_r = 39.882$; $\rho = 1000$ kg/m³

Ambient Temperature : 23.2 °C; Liquid Temperature : 22.4 °C

DASY5 Configuration:

- Probe: EX3DV4 - SN7608; ConvF(8.04, 8.04, 8.04) @ 1880 MHz; Calibrated: 2020.11.27
- Sensor-Surface: 2mm (Mechanical Surface Detection)
- Electronics: DAE4 Sn1643; Calibrated: 2020.11.30
- Phantom: Twin-SAM; Type: QD 000 P41 Ax; Serial: 2020
- Measurement SW: DASY52, Version 52.10 (4); SEMCAD X Version 14.6.14 (7483)

Ch18900/Area Scan (41x81x1): Interpolated grid: dx=1.500 mm, dy=1.500 mm

Maximum value of SAR (interpolated) = 0.476 W/kg

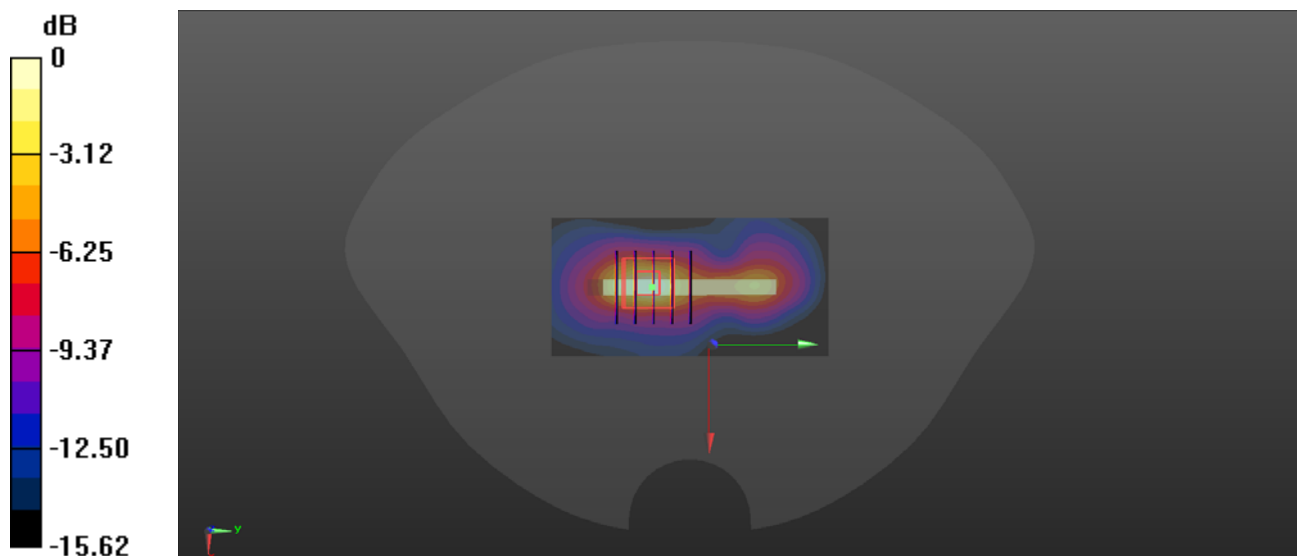
Ch18900/Zoom Scan (5x5x7)/Cube 0: Measurement grid: dx=8mm, dy=8mm, dz=5mm

Reference Value = 9.242 V/m; Power Drift = -0.04 dB

Peak SAR (extrapolated) = 0.565 W/kg

SAR(1 g) = 0.326 W/kg; SAR(10 g) = 0.147 W/kg

Maximum value of SAR (measured) = 0.469 W/kg



0 dB = 0.469 W/kg

LTE Band 4_20MHz_QPSK_1RB_0Offset_Back Side_10mm_Ch20175

Communication System: UID 0, LTE (0); Frequency: 1732.5 MHz; Duty Cycle: 1:1

Medium: HSL_1750 Medium parameters used: $f = 1733$ MHz; $\sigma = 1.412$ S/m; $\epsilon_r = 39.814$; $\rho = 1000$ kg/m³

Ambient Temperature : 23.2 °C; Liquid Temperature : 22.4 °C

DASY5 Configuration:

- Probe: EX3DV4 - SN7608; ConvF(8.32, 8.32, 8.32) @ 1732.5 MHz; Calibrated: 2020.11.27
- Sensor-Surface: 2mm (Mechanical Surface Detection)
- Electronics: DAE4 Sn1643; Calibrated: 2020.11.30
- Phantom: Twin-SAM; Type: QD 000 P41 Ax; Serial: 2020
- Measurement SW: DASY52, Version 52.10 (4); SEMCAD X Version 14.6.14 (7483)

Ch20175/Area Scan (71x81x1): Interpolated grid: dx=1.500 mm, dy=1.500 mm

Maximum value of SAR (interpolated) = 0.297 W/kg

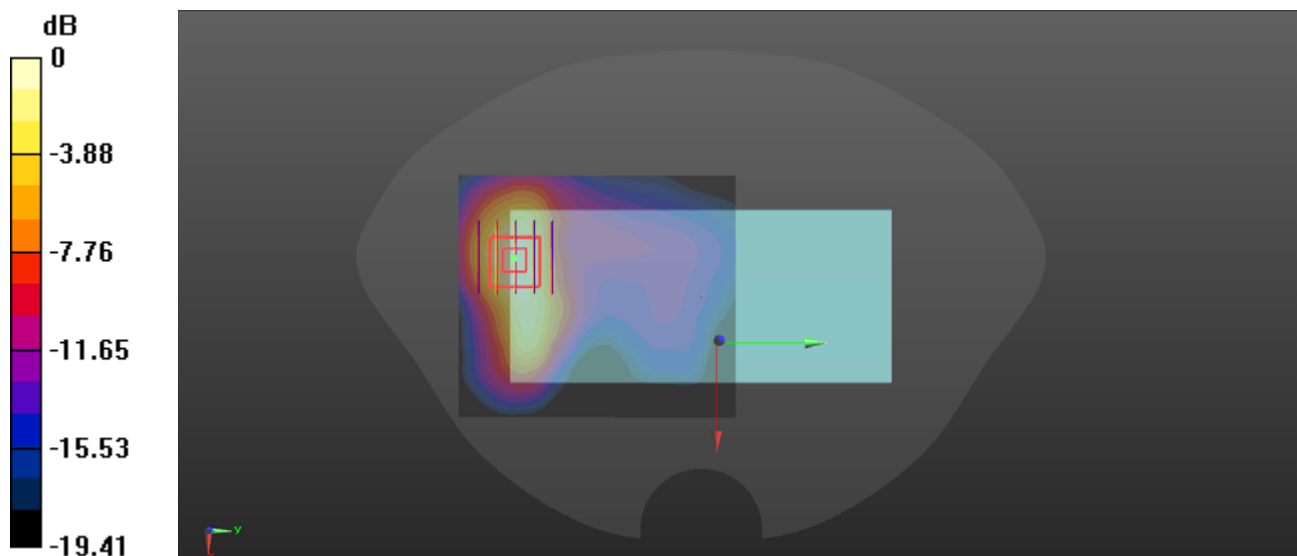
Ch20175/Zoom Scan (5x5x7)/Cube 0: Measurement grid: dx=8mm, dy=8mm, dz=5mm

Reference Value = 2.261 V/m; Power Drift = 0.03 dB

Peak SAR (extrapolated) = 0.377 W/kg

SAR(1 g) = 0.208 W/kg; SAR(10 g) = 0.109 W/kg

Maximum value of SAR (measured) = 0.295 W/kg



0 dB = 0.295 W/kg

LTE Band 4_20MHz_QPSK_1RB_0Offset_Bottom Side_10mm_Ch20175

Communication System: UID 0, LTE (0); Frequency: 1732.5 MHz; Duty Cycle: 1:1

Medium: HSL_1750 Medium parameters used: $f = 1733$ MHz; $\sigma = 1.412$ S/m; $\epsilon_r = 39.814$; $\rho = 1000$ kg/m³

Ambient Temperature : 23.2 °C; Liquid Temperature : 22.4 °C

DASY5 Configuration:

- Probe: EX3DV4 - SN7608; ConvF(8.32, 8.32, 8.32) @ 1732.5 MHz; Calibrated: 2020.11.27
- Sensor-Surface: 2mm (Mechanical Surface Detection)
- Electronics: DAE4 Sn1643; Calibrated: 2020.11.30
- Phantom: Twin-SAM; Type: QD 000 P41 Ax; Serial: 2020
- Measurement SW: DASY52, Version 52.10 (4); SEMCAD X Version 14.6.14 (7483)

Ch20175/Area Scan (41x81x1): Interpolated grid: dx=1.500 mm, dy=1.500 mm

Maximum value of SAR (interpolated) = 0.379 W/kg

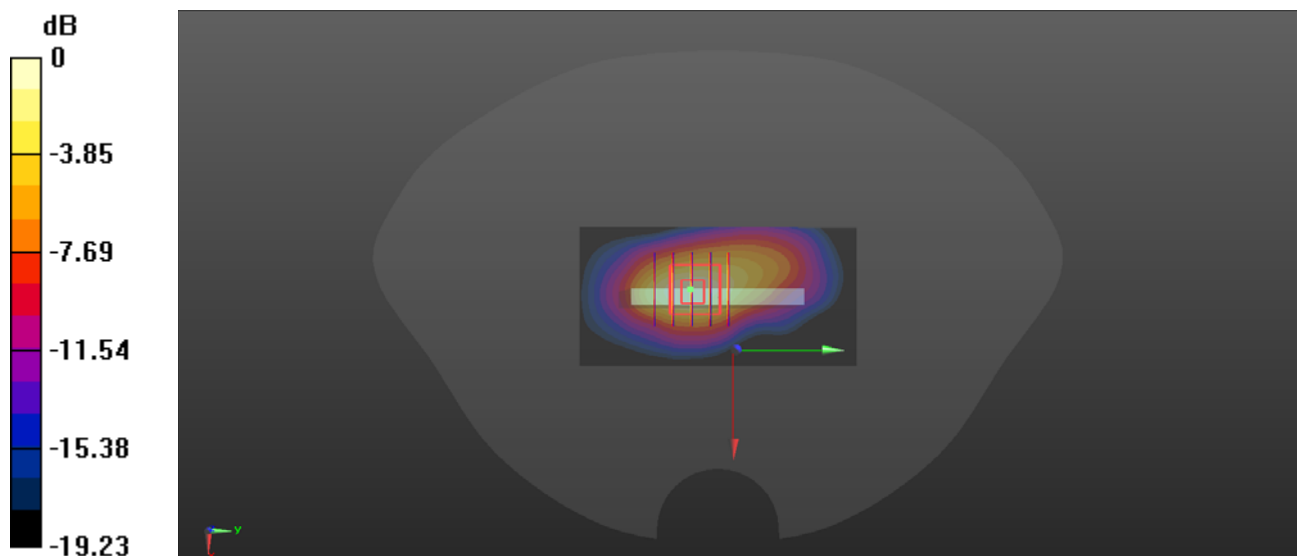
Ch20175/Zoom Scan (5x5x7)/Cube 0: Measurement grid: dx=8mm, dy=8mm, dz=5mm

Reference Value = 12.02 V/m; Power Drift = -0.03 dB

Peak SAR (extrapolated) = 0.413 W/kg

SAR(1 g) = 0.257 W/kg; SAR(10 g) = 0.133 W/kg

Maximum value of SAR (measured) = 0.353 W/kg



0 dB = 0.353 W/kg

LTE Band 5_10MHz_QPSK_1RB_0Offset_Back Side_10mm_Ch20525

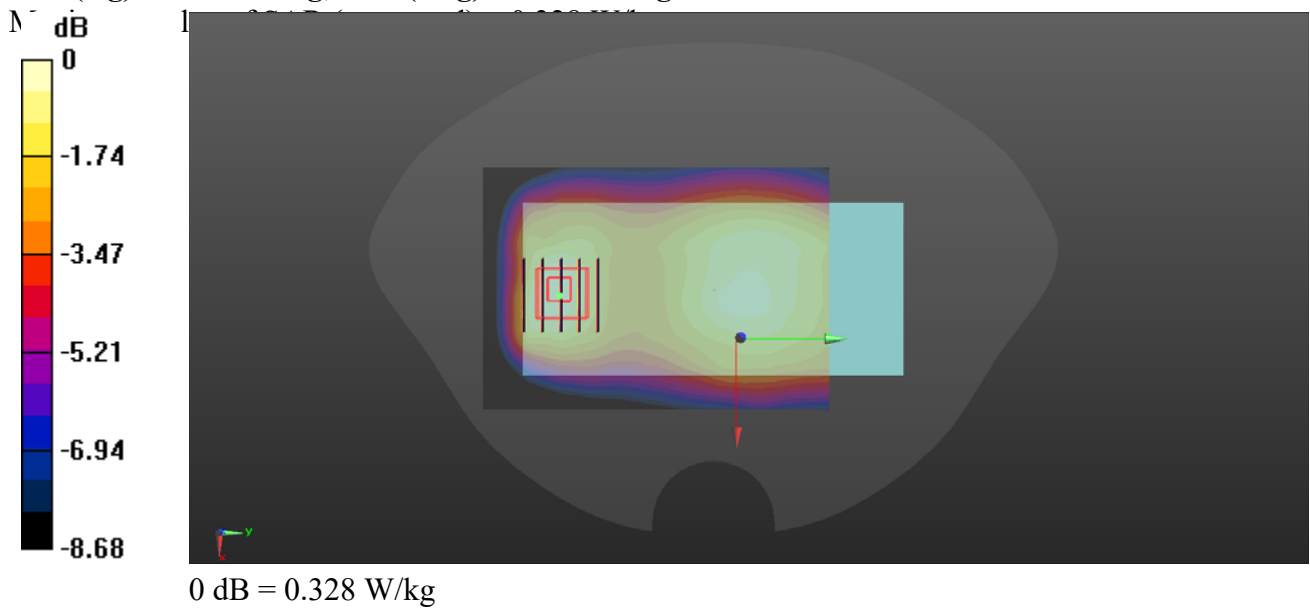
Communication System: UID 0, LTE (0); Frequency: 836.5 MHz; Duty Cycle: 1:1
Medium: HSL_835 Medium parameters used: $f = 836.5$ MHz; $\sigma = 0.943$ S/m; $\epsilon_r = 42.967$; $\rho = 1000$ kg/m³
Ambient Temperature : 23.2 °C; Liquid Temperature : 22.1 °C

DASY5 Configuration:

- Probe: EX3DV4 - SN7608; ConvF(9.57, 9.57, 9.57) @ 836.5 MHz; Calibrated: 2020.11.27
- Sensor-Surface: 2mm (Mechanical Surface Detection)
- Electronics: DAE4 Sn1643; Calibrated: 2020.11.30
- Phantom: Twin-SAM; Type: QD 000 P41 Ax; Serial: 2020
- Measurement SW: DASY52, Version 52.10 (4); SEMCAD X Version 14.6.14 (7483)

Ch20525/Area Scan (71x101x1): Interpolated grid: dx=1.500 mm, dy=1.500 mm
Maximum value of SAR (interpolated) = 0.329 W/kg

Ch20525/Zoom Scan (5x5x7)/Cube 0: Measurement grid: dx=8mm, dy=8mm, dz=5mm
Reference Value = 16.91 V/m; Power Drift = -0.05 dB
Peak SAR (extrapolated) = 0.409 W/kg
SAR(1 g) = 0.253 W/kg; SAR(10 g) = 0.157 W/kg



LTE Band 7_20MHz_QPSK_1RB_0Offset_Back Side_10mm_Ch21100

Communication System: UID 0, LTE (0); Frequency: 2535 MHz; Duty Cycle: 1:1

Medium: HSL_2600 Medium parameters used: $f = 2535$ MHz; $\sigma = 1.911$ S/m; $\epsilon_r = 38.489$; $\rho = 1000$ kg/m³

Ambient Temperature : 23.2 °C; Liquid Temperature : 22.2 °C

DASY5 Configuration:

- Probe: EX3DV4 - SN7608; ConvF(7.4, 7.4, 7.4) @ 2535 MHz; Calibrated: 2020.11.27
- Sensor-Surface: 2mm (Mechanical Surface Detection)
- Electronics: DAE4 Sn1643; Calibrated: 2020.11.30
- Phantom: Twin-SAM; Type: QD 000 P41 Ax; Serial: 2020
- Measurement SW: DASY52, Version 52.10 (4); SEMCAD X Version 14.6.14 (7483)

Ch21100/Area Scan (81x101x1): Interpolated grid: dx=1.200 mm, dy=1.200 mm

Maximum value of SAR (interpolated) = 1.00 W/kg

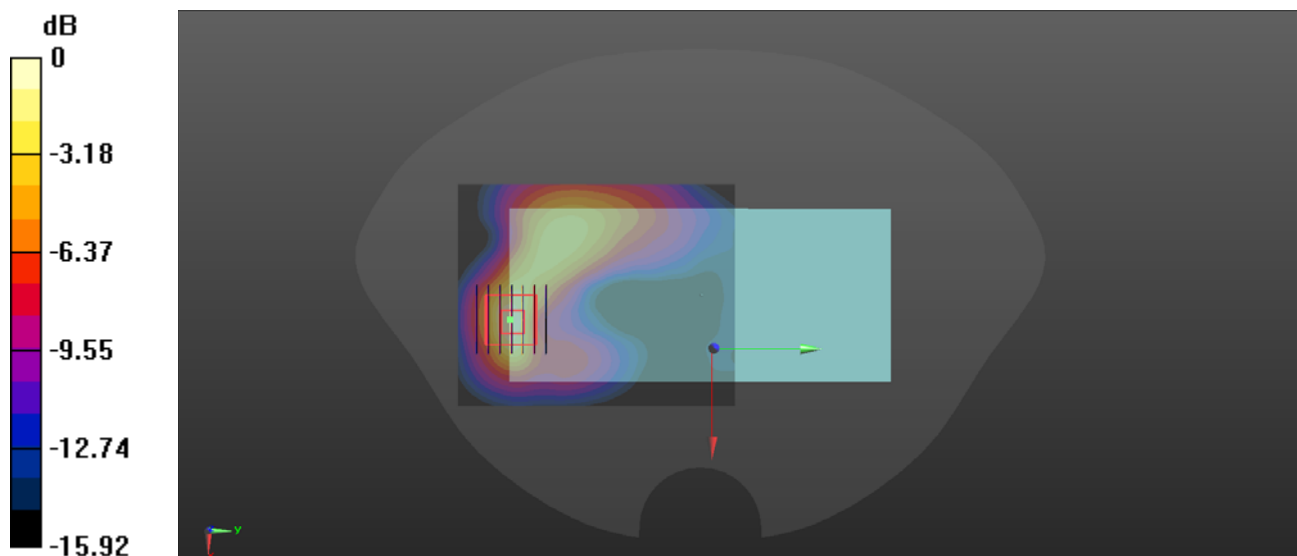
Ch21100/Zoom Scan (7x7x7)/Cube 0: Measurement grid: dx=5mm, dy=5mm, dz=5mm

Reference Value = 2.309 V/m; Power Drift = 0.06 dB

Peak SAR (extrapolated) = 1.37 W/kg

SAR(1 g) = 0.620 W/kg; SAR(10 g) = 0.271 W/kg

Maximum value of SAR (measured) = 0.940 W/kg



0 dB = 0.940 W/kg

LTE Band 7_20MHz_QPSK_1RB_0Offset_Bottom Side_10mm_Ch21100

Communication System: UID 0, LTE (0); Frequency: 2535 MHz; Duty Cycle: 1:1

Medium: HSL_2600 Medium parameters used: $f = 2535$ MHz; $\sigma = 1.911$ S/m; $\epsilon_r = 38.489$; $\rho = 1000$ kg/m³

Ambient Temperature : 23.2 °C; Liquid Temperature : 22.2 °C

DASY5 Configuration:

- Probe: EX3DV4 - SN7608; ConvF(7.4, 7.4, 7.4) @ 2535 MHz; Calibrated: 2020.11.27
- Sensor-Surface: 2mm (Mechanical Surface Detection)
- Electronics: DAE4 Sn1643; Calibrated: 2020.11.30
- Phantom: Twin-SAM; Type: QD 000 P41 Ax; Serial: 2020
- Measurement SW: DASY52, Version 52.10 (4); SEMCAD X Version 14.6.14 (7483)

Ch21100/Area Scan (51x91x1): Interpolated grid: dx=1.200 mm, dy=1.200 mm

Maximum value of SAR (interpolated) = 1.07 W/kg

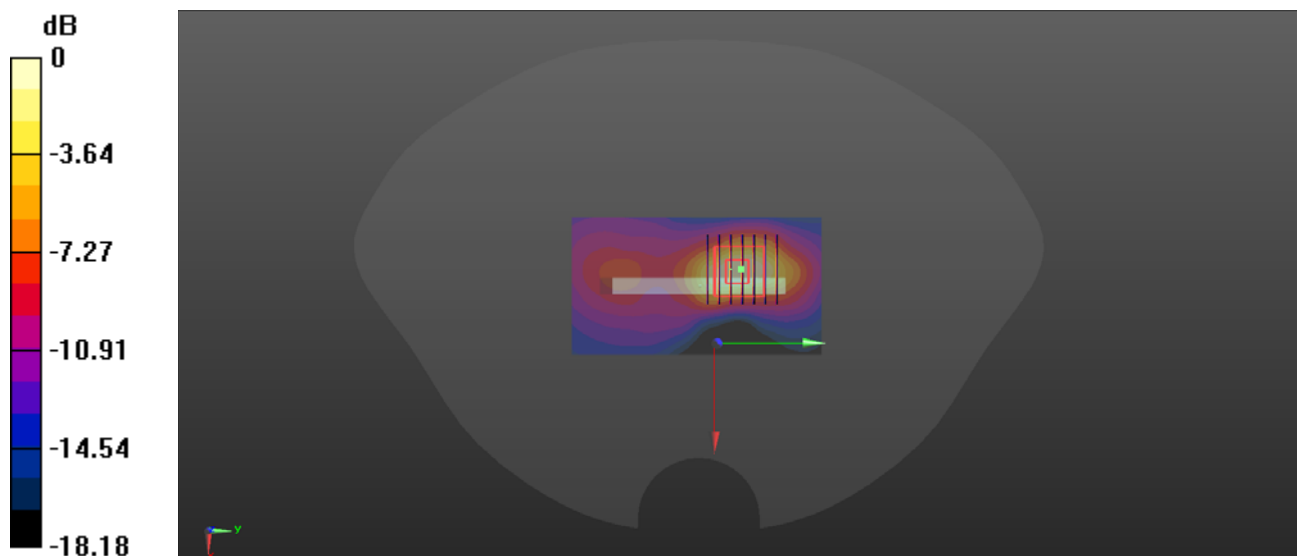
Ch21100/Zoom Scan (7x7x7)/Cube 0: Measurement grid: dx=5mm, dy=5mm, dz=5mm

Reference Value = 11.72 V/m; Power Drift = 0.06 dB

Peak SAR (extrapolated) = 1.51 W/kg

SAR(1 g) = 0.630 W/kg; SAR(10 g) = 0.270 W/kg

Maximum value of SAR (measured) = 0.943 W/kg



0 dB = 0.943 W/kg

LTE Band 12_10MHz_QPSK_1RB_0Offset_Back Side_10mm_Ch23095

Communication System: UID 0, LTE (0); Frequency: 707.5 MHz; Duty Cycle: 1:1

Medium: HSL_750 Medium parameters used: $f = 707.5$ MHz; $\sigma = 0.848$ S/m; $\epsilon_r = 44.777$; $\rho = 1000$ kg/m³

Ambient Temperature : 23.2 °C; Liquid Temperature : 22.1 °C

DASY5 Configuration:

- Probe: EX3DV4 - SN7608; ConvF(9.76, 9.76, 9.76) @ 707.5 MHz; Calibrated: 2020.11.27
- Sensor-Surface: 2mm (Mechanical Surface Detection)
- Electronics: DAE4 Sn1643; Calibrated: 2020.11.30
- Phantom: Twin-SAM; Type: QD 000 P41 Ax; Serial: 2020
- Measurement SW: DASY52, Version 52.10 (4); SEMCAD X Version 14.6.14 (7483)

Ch23095/Area Scan (71x101x1): Interpolated grid: dx=1.500 mm, dy=1.500 mm

Maximum value of SAR (interpolated) = 0.315 W/kg

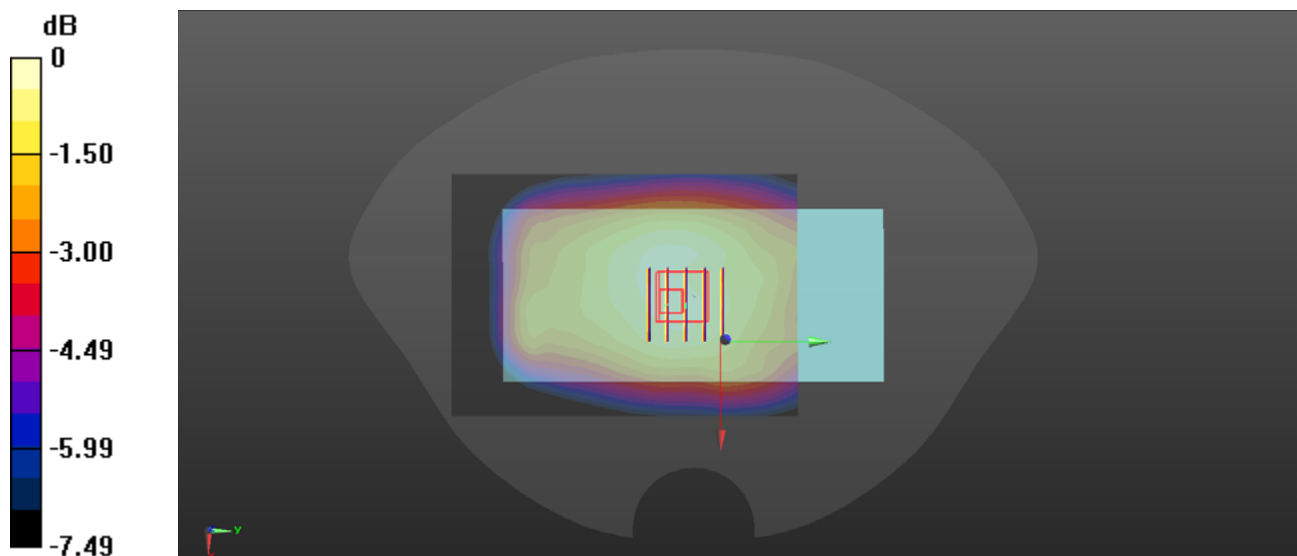
Ch23095/Zoom Scan (5x5x7)/Cube 0: Measurement grid: dx=8mm, dy=8mm, dz=5mm

Reference Value = 19.21 V/m; Power Drift = -0.08 dB

Peak SAR (extrapolated) = 0.338 W/kg

SAR(1 g) = 0.300 W/kg; SAR(10 g) = 0.238 W/kg

Maximum value of SAR (measured) = 0.336 W/kg



0 dB = 0.336 W/kg

LTE Band 13_10MHz_QPSK_1RB_0Offset_Back Side_10mm_Ch23230

Communication System: UID 0, LTE (0); Frequency: 782 MHz; Duty Cycle: 1:1

Medium: HSL_750 Medium parameters used: $f = 782$ MHz; $\sigma = 0.885$ S/m; $\epsilon_r = 43.316$; $\rho = 1000$ kg/m³

Ambient Temperature : 23.2 °C; Liquid Temperature : 22.1 °C

DASY5 Configuration:

- Probe: EX3DV4 - SN7608; ConvF(9.76, 9.76, 9.76) @ 782 MHz; Calibrated: 2020.11.27
- Sensor-Surface: 2mm (Mechanical Surface Detection)
- Electronics: DAE4 Sn1643; Calibrated: 2020.11.30
- Phantom: Twin-SAM; Type: QD 000 P41 Ax; Serial: 2020
- Measurement SW: DASY52, Version 52.10 (4); SEMCAD X Version 14.6.14 (7483)

Ch23230/Area Scan (71x101x1): Interpolated grid: dx=1.500 mm, dy=1.500 mm

Maximum value of SAR (interpolated) = 0.138 W/kg

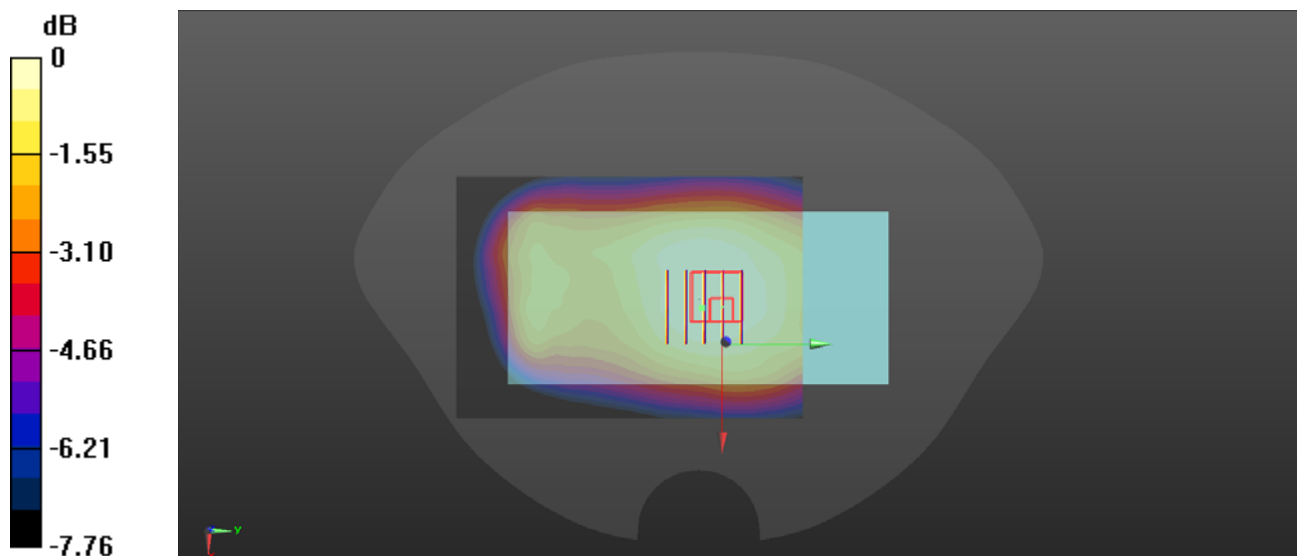
Ch23230/Zoom Scan (5x5x7)/Cube 0: Measurement grid: dx=8mm, dy=8mm, dz=5mm

Reference Value = 12.22 V/m; Power Drift = -0.05 dB

Peak SAR (extrapolated) = 0.136 W/kg

SAR(1 g) = 0.126 W/kg; SAR(10 g) = 0.100 W/kg

Maximum value of SAR (measured) = 0.135 W/kg



0 dB = 0.135 W/kg

WLAN 2.4GHz_802.11b 1Mbps_Back Side_10mm_Ch7

Communication System: UID 0, WLAN 2.4GHz 802.11b (0); Frequency: 2442 MHz; Duty Cycle: 1:1
Medium: HSL_2450 Medium parameters used: $f = 2442$ MHz; $\sigma = 1.808$ S/m; $\epsilon_r = 38.829$; $\rho = 1000$ kg/m³

Ambient Temperature : 23.2 °C; Liquid Temperature : 22.1 °C

DASY5 Configuration:

- Probe: EX3DV4 - SN7608; ConvF(7.58, 7.58, 7.58) @ 2442 MHz; Calibrated: 2020.11.27
- Sensor-Surface: 2mm (Mechanical Surface Detection)
- Electronics: DAE4 Sn1643; Calibrated: 2020.11.30
- Phantom: Twin-SAM; Type: QD 000 P41 Ax; Serial: 2020
- Measurement SW: DASY52, Version 52.10 (4); SEMCAD X Version 14.6.14 (7483)

Ch7/Area Scan (81x101x1): Interpolated grid: dx=1.200 mm, dy=1.200 mm

Maximum value of SAR (interpolated) = 0.322 W/kg

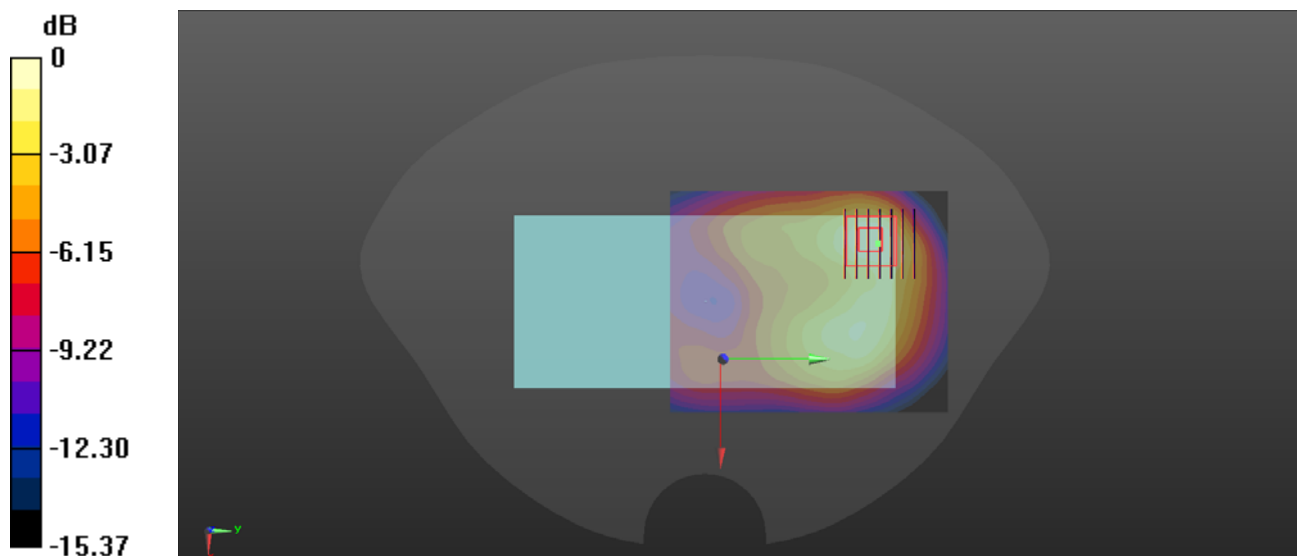
Ch7/Zoom Scan (7x7x7)/Cube 0: Measurement grid: dx=5mm, dy=5mm, dz=5mm

Reference Value = 3.330 V/m; Power Drift = 0.02 dB

Peak SAR (extrapolated) = 0.404 W/kg

SAR(1 g) = 0.218 W/kg; SAR(10 g) = 0.110 W/kg

Maximum value of SAR (measured) = 0.306 W/kg



0 dB = 0.306 W/kg

WLAN 2.4GHz_802.11b 1Mbps_Top Side_10mm_Ch7

Communication System: UID 0, WLAN 2.4GHz 802.11b (0); Frequency: 2442 MHz; Duty Cycle: 1:1
Medium: HSL_2450 Medium parameters used: $f = 2442$ MHz; $\sigma = 1.808$ S/m; $\epsilon_r = 38.829$; $\rho = 1000$ kg/m³

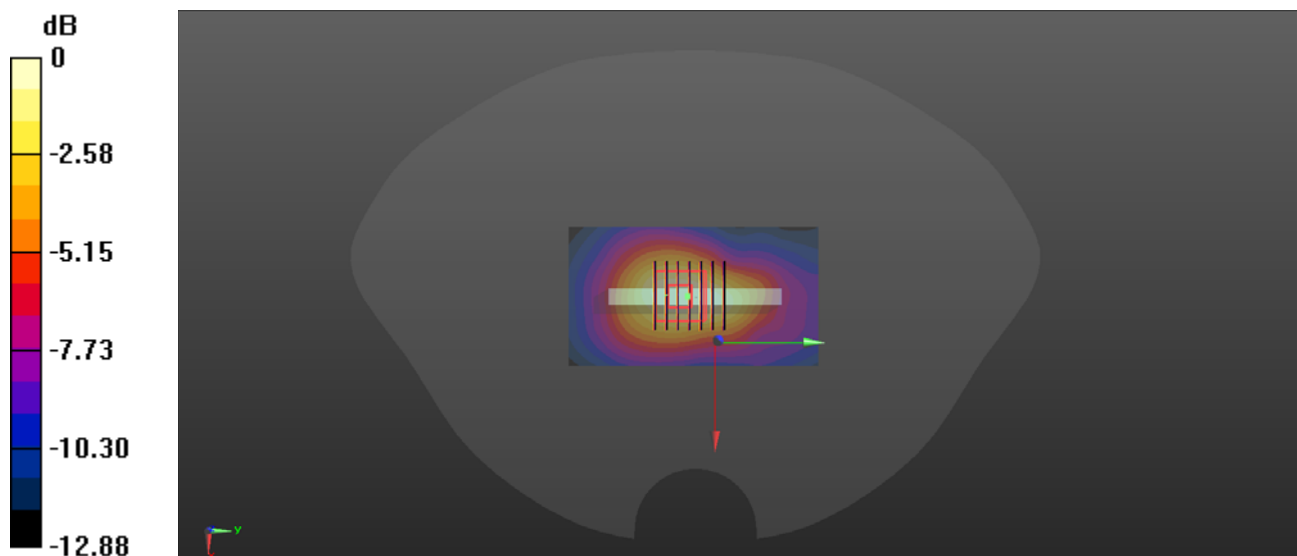
Ambient Temperature : 23.2 °C; Liquid Temperature : 22.1 °C

DASY5 Configuration:

- Probe: EX3DV4 - SN7608; ConvF(7.58, 7.58, 7.58) @ 2442 MHz; Calibrated: 2020.11.27
- Sensor-Surface: 2mm (Mechanical Surface Detection)
- Electronics: DAE4 Sn1643; Calibrated: 2020.11.30
- Phantom: Twin-SAM; Type: QD 000 P41 Ax; Serial: 2020
- Measurement SW: DASY52, Version 52.10 (4); SEMCAD X Version 14.6.14 (7483)

Ch7/Area Scan (51x91x1): Interpolated grid: dx=1.200 mm, dy=1.200 mm
Maximum value of SAR (interpolated) = 0.351 W/kg

Ch7/Zoom Scan (7x7x7)/Cube 0: Measurement grid: dx=5mm, dy=5mm, dz=5mm
Reference Value = 12.20 V/m; Power Drift = -0.04 dB
Peak SAR (extrapolated) = 0.396 W/kg
SAR(1 g) = 0.258 W/kg; SAR(10 g) = 0.142 W/kg
Maximum value of SAR (measured) = 0.339 W/kg



0 dB = 0.339 W/kg