

FCC TEST REPORT

Product Name: Mobile Phone
Trade Mark: BLU
Model No.: G90 PRO
Report Number: 200423019RFM-1
Test Standards: FCC 47 CFR Part 22 Subpart H
FCC 47 CFR Part 24 Subpart E
FCC 47 CFR Part 27 Subpart L
FCC ID: YHLBLUG90PRO
Test Result: PASS
Date of Issue: June 1, 2020

Prepared for:

BLU Products, Inc.
10814 NW 33rd St # 100 Doral, FL 33172 ,USA

Prepared by:

Shenzhen UnionTrust Quality and Technology Co., Ltd.
16/F, Block A, Building 6, Baoneng Science and Technology Park,
Qingxiang Road No.1, Longhua New District, Shenzhen, China
TEL: +86-755-2823 0888
FAX: +86-755-2823 0886

Prepared by: Henry Lu

Team Leader

Reviewed by: Kevin Liang

Assistant Manager

Approved by: Billy Li

Technical Director

Date: June 1, 2020



Shenzhen UnionTrust Quality and Technology Co., Ltd.

Address: 16/F, Block A, Building 6, Baoneng Science and Technology Park, Qingxiang Road No.1, Longhua New District, Shenzhen, China

Tel: +86-755-28230888

Fax: +86-755-28230886

E-mail: info@uttlab.com

<http://www.uttlab.com>

UTTR-RF-FCC23G-V1.0

Version

Version No.	Date	Description
V1.0	June 1, 2020	Original

**Shenzhen UnionTrust Quality and Technology Co., Ltd.**

Address: 16/F, Block A, Building 6, Baoneng Science and Technology Park, Qingxiang Road No.1, Longhua New District, Shenzhen, China

Tel: +86-755-28230888

Fax: +86-755-28230886

E-mail: info@uttlab.com<http://www.uttlab.com>UTTR-RF-FCC23G-V1.0

CONTENTS

1. GENERAL INFORMATION	4
1.1 CLIENT INFORMATION	4
1.2 EUT INFORMATION	4
1.2.1 GENERAL DESCRIPTION OF EUT	4
1.2.2 DESCRIPTION OF ACCESSORIES.....	4
1.3 PRODUCT SPECIFICATION SUBJECTIVE TO THIS STANDARD	5
1.4 DESCRIPTION OF SUPPORT UNITS	6
1.5 TEST LOCATION.....	6
1.6 TEST FACILITY.....	6
1.7 DEVIATION FROM STANDARDS	6
1.8 ABNORMALITIES FROM STANDARD CONDITIONS.....	6
1.9 OTHER INFORMATION REQUESTED BY THE CUSTOMER	6
1.10 MEASUREMENT UNCERTAINTY	7
2. TEST SUMMARY	8
3. EQUIPMENT LIST	10
4. TEST CONFIGURATION	11
4.1 ENVIRONMENTAL CONDITIONS FOR TESTING	11
4.2 TEST SETUP	12
4.2.1 FOR RADIATED EMISSIONS TEST SETUP	12
4.2.2 FOR CONDUCTED RF TEST SETUP	13
4.3 TEST CHANNELS	14
4.4 SYSTEM TEST CONFIGURATION	15
4.5 PRE-SCAN	15
5. RADIO TECHNICAL REQUIREMENTS SPECIFICATION	18
5.1 REFERENCE DOCUMENTS FOR TESTING	18
5.2 MAXIMUM ERP/EIRP	18
5.3 CONDUCTED OUTPUT POWER	20
5.4 PEAK-TO-AVERAGE RATIO	21
5.5 99%&26dB BANDWIDTH.....	26
5.6 BAND EDGE AT ANTENNA TERMINALS	31
5.7 SPURIOUS EMISSIONS AT ANTENNA TERMINALS	35
5.8 FIELD STRENGTH OF SPURIOUS RADIATION.....	40
5.9 FREQUENCY STABILITY	48
APPENDIX 1 PHOTOS OF TEST SETUP	52
APPENDIX 2 PHOTOS OF EUT CONSTRUCTIONAL DETAILS.....	52

1. GENERAL INFORMATION

1.1 CLIENT INFORMATION

Applicant:	BLU Products, Inc.
Address of Applicant:	10814 NW 33rd St # 100 Doral, FL 33172 ,USA
Manufacturer:	BLU Products, Inc.
Address of Manufacturer:	10814 NW 33rd St # 100 Doral, FL 33172 ,USA

1.2 EUT INFORMATION

1.2.1 General Description of EUT

Product Name:	Mobile Phone	
Model No.:	G90 PRO	
Add. Model No.:	N/A	
Trade Mark:	BLU	
DUT Stage:	Identical Prototype	
EUT Supports Function:	GSM Bands:	GSM850/1900
	UTRA Bands:	Band II/ Band IV/ Band V
	E-UTRA Bands:	FDD Band 2/ Band 4/ Band 5/ Band 7/ Band 12/ Band 13/ Band 17
	2.4 GHz ISM Band:	IEEE 802.11b/g/n Bluetooth V4.2
IMEI Code:	Conduction	869899033468112, 869899033468120
	Radiation	869899033468336, 869899033468344
Sample Received Date:	April 23, 2020	
Sample Tested Date:	April 23, 2020 to May 21, 2020	

1.2.2 Description of Accessories

Adapter	
Model No.:	US-KB-2009
Input:	100-240 V~50/60 Hz 0.6A
Output:	9.0 V --- 2000mA
DC Cable:	1.00 Meter, Shielded without ferrite
Manufacturer:	Shenzhen Huajin Electronics Co., Ltd

Battery	
Model No.:	C826358500P
Battery Type:	Lithium-ion Polymer Rechargeable Battery
Rated Voltage:	3.85 Vdc
Limited Charge Voltage:	4.4 Vdc
Rated Capacity:	5000 mAh
Typical Capacity:	5100 mAh
Manufacturer:	Dongguan Nanyu Xinsheng Electronic Technology CO.Ltd

Cable	
Description:	USB Type-C Plug Cable
Cable Type:	Unshielded without ferrite
Length:	1.00 Meter

Shenzhen UnionTrust Quality and Technology Co., Ltd.

Address: 16/F, Block A, Building 6, Baoneng Science and Technology Park, Qingxiang Road No.1, Longhua New District, Shenzhen, China

Tel: +86-755-28230888

Fax: +86-755-28230886

E-mail: info@uttlab.com

<http://www.uttlab.com>

UTTR-RF-FCC23G-V1.0

Earphone	
Cable Type:	Unshielded
Length:	1.20 Meter

1.3 PRODUCT SPECIFICATION SUBJECTIVE TO THIS STANDARD

Support Networks:	GSM, GPRS, EDGE, WCDMA, HSDPA, HSUPA	
Type of Modulation:	GSM/GPRS:	GMSK
	EDGE:	GMSK, 8PSK
	WCDMA	BPSK
	HSDPA:	QPSK
	HSUPA:	QPSK
Frequency Range:	GSM/GPRS/EDGE 850:	824.2-848.8 MHz
	GSM/GPRS/EDGE 1900:	1850.2-1909.8 MHz
	WCDMA Band II:	1852.4-1907.6 MHz
	WCDMA Band IV:	1712.4-1752.6 MHz
	WCDMA Band V:	826.4-846.6 MHz
Max RF Output Power:	GSM/GPRS 850:	29.21dBm
	EDGE 850:	23.86dBm
	GSM/GPRS 1900:	30.19dBm
	EDGE 1900:	21.83dBm
	WCDMA Band II:	22.98dBm
	WCDMA Band IV:	22.85dBm
	WCDMA Band V:	19.58dBm
Emission Designator:	GSM/GPRS 850:	245KGXW
	EDGE 850:	249KG7W
	GSM/GPRS 1900:	247KGXW
	EDGE 1900:	245KG7W
	WCDMA Band II:	4M17F9W
	WCDMA Band IV:	4M17F9W
	WCDMA Band V:	4M16F9W
Antenna Type:	PIFA Antenna	
Antenna Gain:	GSM 850:	-0.7 dBi
	PCS 1900:	0.7 dBi
	WCDMA Band II:	0.7 dBi
	WCDMA Band IV:	0.7 dBi
	WCDMA Band V:	-0.7 dBi
Normal Test Voltage:	3.85 Vdc	
Extreme Test Voltage:	3.5 to 4.4Vdc	
Extreme Test Temperature:	-30 °C to +50 °C	

Shenzhen UnionTrust Quality and Technology Co., Ltd.

Address: 16/F, Block A, Building 6, Baoneng Science and Technology Park, Qingxiang Road No.1, Longhua New District, Shenzhen, China

Tel: +86-755-28230888

Fax: +86-755-28230886

E-mail: info@uttlab.com

<http://www.uttlab.com>

UTTR-RF-FCC23G-V1.0

1.4 DESCRIPTION OF SUPPORT UNITS

The EUT has been tested with associated equipment below.

1) Support Cable

Cable No.	Description	Connector	Length	Supplied by
1	Antenna Cable	SMA	0.30 Meter	Applicant

1.5 TEST LOCATION

Shenzhen UnionTrust Quality and Technology Co., Ltd.

Address: 16/F, Block A, Building 6, Baoneng Science and Technology Park, Qingxiang Road No.1, Longhua New District, Shenzhen, China 518109
 Telephone: +86 (0) 755 2823 0888
 Fax: +86 (0) 755 2823 0886

1.6 TEST FACILITY

The test facility is recognized, certified, or accredited by the following organizations:

CNAS-Lab Code: L9069

The measuring equipment utilized to perform the tests documented in this report has been calibrated once a year or in accordance with the manufacturer's recommendations, and is traceable under the ISO/IEC/EN 17025 to international or national standards. Equipment has been calibrated by accredited calibration laboratories.

A2LA-Lab Certificate No.: 4312.01

Shenzhen UnionTrust Quality and Technology Co., Ltd. has been accredited by A2LA for technical competence in the field of electrical testing, and proved to be in compliance with ISO/IEC 17025: 2005 General Requirements for the Competence of Testing and Calibration Laboratories and any additional program requirements in the identified field of testing.

ISED Wireless Device Testing Laboratories

CAB identifier: CN0032

FCC Accredited Lab.

Designation Number: CN1194
 Test Firm Registration Number: 259480

1.7 DEVIATION FROM STANDARDS

None.

1.8 ABNORMALITIES FROM STANDARD CONDITIONS

None.

1.9 OTHER INFORMATION REQUESTED BY THE CUSTOMER

None.

Shenzhen UnionTrust Quality and Technology Co., Ltd.

Address: 16/F, Block A, Building 6, Baoneng Science and Technology Park, Qingxiang Road No.1, Longhua New District, Shenzhen, China
 Tel: +86-755-28230888 Fax: +86-755-28230886 E-mail: info@uttlab.com <http://www.uttlab.com>
UTTR-RF-FCC23G-V1.0

1.10 MEASUREMENT UNCERTAINTY

Where relevant, the following measurement uncertainty levels have been estimated for tests performed on the Product as specified in CISPR 16-4-2. This uncertainty represents an expanded uncertainty expressed at approximately the 95% confidence level using a coverage factor of k=2.

No.	Item	Measurement Uncertainty
1	Conducted emission 9KHz-150KHz	±3.2 dB
2	Conducted emission 150KHz-30MHz	±2.7 dB
3	Radiated spurious emissions 30MHz-1GHz	± 4.9 dB
4	Radiated spurious emissions 1GHz-18GHz	± 4.8 dB
5	Radiated spurious emissions 18GHz-40GHz	± 5.1 dB
6	Occupied Bandwidth	± 1.86 %
7	DC Supply Voltages	± 0.68 %
8	Temperature	± 0.62 °C
9	Humidity	± 3.9 %
10	Conducted spurious emissions	± 2.7 dB
11	DC Supply Voltages	± 0.68 %
12	AC Supply Voltages	± 1.2 %
13	Radio Frequency	± 6.5 x 10 ⁻⁸
14	RF Power, Conducted	± 0.9 dB

2. TEST SUMMARY

FCC 47 CFR Part 22 Subpart H Test Cases			
Test Item	Test Requirement	Test Method	Result
Effective Radiated Power (ERP)	FCC 47 CFR Part 2.1046(a) & FCC 47 CFR Part 22.913(a)	ANSI C63.26-2015 & KDB 971168 D01v03r01	PASS
Conducted Output Power	FCC 47 CFR Part 2.1046(a) & FCC 47 CFR Part 22.913(a)	ANSI C63.26-2015 & KDB 971168 D01v03r01	PASS
Peak-to-average ratio	FCC 47 CFR Part 22.913(a)	ANSI C63.26-2015 & KDB 971168 D01v03r01	PASS
99%&26dB Bandwidth	FCC 47 CFR Part 2.1049(h)	ANSI C63.26-2015 & KDB 971168 D01v03r01	PASS
Band Edge at antenna terminals	FCC 47 CFR Part 2.1051 & FCC 47 CFR Part 22.917(a)	ANSI C63.26-2015 & KDB 971168 D01v03r01	PASS
Spurious emissions at antenna terminals	FCC 47 CFR Part 2.1051 & FCC 47 CFR Part 22.917(a)(b)	ANSI C63.26-2015 & KDB 971168 D01v03r01	PASS
Field strength of spurious radiation	FCC 47 CFR Part 2.1053 & FCC 47 CFR Part 22.917(a)(b)	ANSI C63.26-2015 & KDB 971168 D01v03r01	PASS
Frequency stability	FCC 47 CFR Part 2.1055 & FCC 47 CFR Part 22.355	ANSI C63.26-2015 & KDB 971168 D01v03r01	PASS

FCC 47 CFR Part 24 Subpart E Test Cases			
Test Item	Test Requirement	Test Method	Result
Equivalent Isotropic Radiated Power (EIRP)	FCC 47 CFR Part 2.1046(a) & FCC 47 CFR Part 24.232(c)	ANSI C63.26-2015 & KDB 971168 D01v03r01	PASS
Conducted Output Power	FCC 47 CFR Part 2.1046(a) & FCC 47 CFR Part 24.232(c)	ANSI C63.26-2015 & KDB 971168 D01v03r01	PASS
Peak-to-average ratio	FCC 47 CFR Part 24.232(d)	KDB 971168 D01v03r01	PASS
99%&26dB Bandwidth	FCC 47 CFR Part 2.1049(h) & FCC 47 CFR Part 24.238(b)	ANSI C63.26-2015 & KDB 971168 D01v03r01	PASS
Band Edge at antenna terminals	FCC 47 CFR Part 2.1051 & FCC 47 CFR Part 24.238(a)	ANSI C63.26-2015 & KDB 971168 D01v03r01	PASS
Spurious emissions at antenna terminals	FCC 47 CFR Part 2.1051 & FCC 47 CFR Part 24.238(a)(b)	ANSI C63.26-2015 & KDB 971168 D01v03r01	PASS
Field strength of spurious radiation	FCC 47 CFR Part 2.1053 & FCC 47 CFR Part 24.238(a)(b)	ANSI C63.26-2015 & KDB 971168 D01v03r01	PASS
Frequency stability	FCC 47 CFR Part 2.1055 & FCC 47 CFR Part 24.235	ANSI C63.26-2015 & KDB 971168 D01v03r01	PASS

FCC 47 CFR Part 27 Subpart L Test Cases			
Test Item	Test Requirement	Test Method	Result
Equivalent Isotropic Radiated Power (EIRP)	FCC 47 CFR Part 2.1046(a) & FCC 47 CFR Part 27.50(d)(4)	ANSI C63.26-2015 & KDB 971168 D01v03r01	PASS
Conducted Output Power	FCC 47 CFR Part 2.1046(a) & FCC 47 CFR Part 27.50(d)(4)	ANSI C63.26-2015 & KDB 971168 D01v03r01	PASS
Peak-to-average ratio	FCC 47 CFR Part 27.50(d)(5)	KDB 971168 D01v03r01	PASS
99%&26dB Bandwidth	FCC 47 CFR Part 2.1049(h) & FCC 47 CFR Part 27.53(h)	ANSI C63.26-2015 & KDB 971168 D01v03r01	PASS
Band Edge at antenna terminals	FCC 47 CFR Part 27.53(h)(1)	ANSI C63.26-2015 & KDB 971168 D01v03r01	PASS
Spurious emissions at antenna terminals	FCC 47 CFR Part 2.1051 & FCC 47 CFR Part 27.53(h)	ANSI C63.26-2015 & KDB 971168 D01v03r01	PASS
Field strength of spurious radiation	FCC 47 CFR Part 2.1053 & FCC 47 CFR Part 27.53(h)	ANSI C63.26-2015 & KDB 971168 D01v03r01	PASS
Frequency stability	FCC 47 CFR Part 2.1055 & FCC 47 CFR Part 27.54	ANSI C63.26-2015 & KDB 971168 D01v03r01	PASS

Shenzhen UnionTrust Quality and Technology Co., Ltd.

Address: 16/F, Block A, Building 6, Baoneng Science and Technology Park, Qingxiang Road No.1, Longhua New District, Shenzhen, China

Tel: +86-755-28230888

Fax: +86-755-28230886

E-mail: info@uttlab.com

<http://www.uttlab.com>

UTTR-RF-FCC23G-V1.0

3. EQUIPMENT LIST

Radiated Emission Test Equipment List						
Used	Equipment	Manufacturer	Model No.	Serial Number	Cal. date (mm dd, yyyy)	Cal. Due date (mm dd, yyyy)
<input checked="" type="checkbox"/>	3M Chamber & Accessory Equipment	ETS-LINDGREN	3M	N/A	Dec. 03, 2018	Dec. 03, 2021
<input checked="" type="checkbox"/>	Receiver	R&S	ESIB26	100114	Nov. 24, 2019	Nov. 23, 2020
<input type="checkbox"/>	Loop Antenna	ETS-LINDGREN	6502	00202525	Nov. 24, 2019	Nov. 23, 2020
<input checked="" type="checkbox"/>	Broadband Antenna	ETS-LINDGREN	3142E	00201566	Nov. 16, 2019	Nov. 15, 2020
<input checked="" type="checkbox"/>	6dB Attenuator	Talent	RA6A5-N-18	18103001	Nov. 16, 2019	Nov. 15, 2020
<input checked="" type="checkbox"/>	Preamplifier	HP	8447F	2805A02960	Nov. 16, 2019	Nov. 15, 2020
<input type="checkbox"/>	Broadband Antenna (Pre-amplifier)	ETS-LINDGREN	3142E-PA	00201891	Nov. 24, 2019	Nov. 23, 2020
<input type="checkbox"/>	6dB Attenuator	Talent	RA6A5-N-18	18103002	Nov. 24, 2019	Nov. 23, 2020
<input checked="" type="checkbox"/>	Horn Antenna	ETS-LINDGREN	3117	00164202	Nov. 24, 2019	Nov. 23, 2020
<input checked="" type="checkbox"/>	Pre-amplifier	ETS-LINDGREN	118385	00201874	Jan. 10, 2020	Jan. 10, 2021
<input type="checkbox"/>	Horn Antenna	ETS-LINDGREN	3116C	00200180	Jun. 23, 2019	Jun. 23, 2020
<input checked="" type="checkbox"/>	Horn Antenna (Pre-amplifier)	ETS-LINDGREN	3116C-PA	00202652	Jun. 23, 2019	Jun. 23, 2020
<input checked="" type="checkbox"/>	Multi device Controller	ETS-LINDGREN	7006-001	00160105	N/A	N/A
<input checked="" type="checkbox"/>	Test Software	Audix	e3	Software Version: 9.160323		

RF Test Equipment List						
Used	Equipment	Manufacturer	Model No.	Serial Number	Cal. date (mm dd, yyyy)	Cal. Due date (mm dd, yyyy)
<input checked="" type="checkbox"/>	Receiver	R&S	ESR7	1316.3003K07-101181-K3	Nov. 24, 2019	Nov. 23, 2020
<input checked="" type="checkbox"/>	EXA Spectrum Analyzer	KEYSIGHT	N9010A	MY51440197	Nov. 24, 2019	Nov. 23, 2020
<input checked="" type="checkbox"/>	Wideband Radio Communication Tester	R&S	CMW500	120932	Jul. 19, 2019	Jul. 19, 2020
<input type="checkbox"/>	Wideband Radio Communication Tester	R&S	CMW500	119583	Jul. 31, 2019	Jul. 31, 2020
<input checked="" type="checkbox"/>	DC Source	KIKUSUI	PWR400L	LK003024	Sep. 09, 2019	Sep. 08, 2020
<input type="checkbox"/>	Temp & Humidity chamber	Espec	GL(U)04K A(W)	16921H201P3	Sep. 09, 2019	Sep. 08, 2020
<input checked="" type="checkbox"/>	Temp & Humidity chamber	Votisch	VT4002	58566133290020	Jun. 05, 2018	Jun. 05, 2020

Shenzhen UnionTrust Quality and Technology Co., Ltd.

Address: 16/F, Block A, Building 6, Baoneng Science and Technology Park, Qingxiang Road No.1, Longhua New District, Shenzhen, China

Tel: +86-755-28230888

Fax: +86-755-28230886

E-mail: info@uttlab.com

<http://www.uttlab.com>

UTTR-RF-FCC23G-V1.0

4. TEST CONFIGURATION

4.1 ENVIRONMENTAL CONDITIONS FOR TESTING

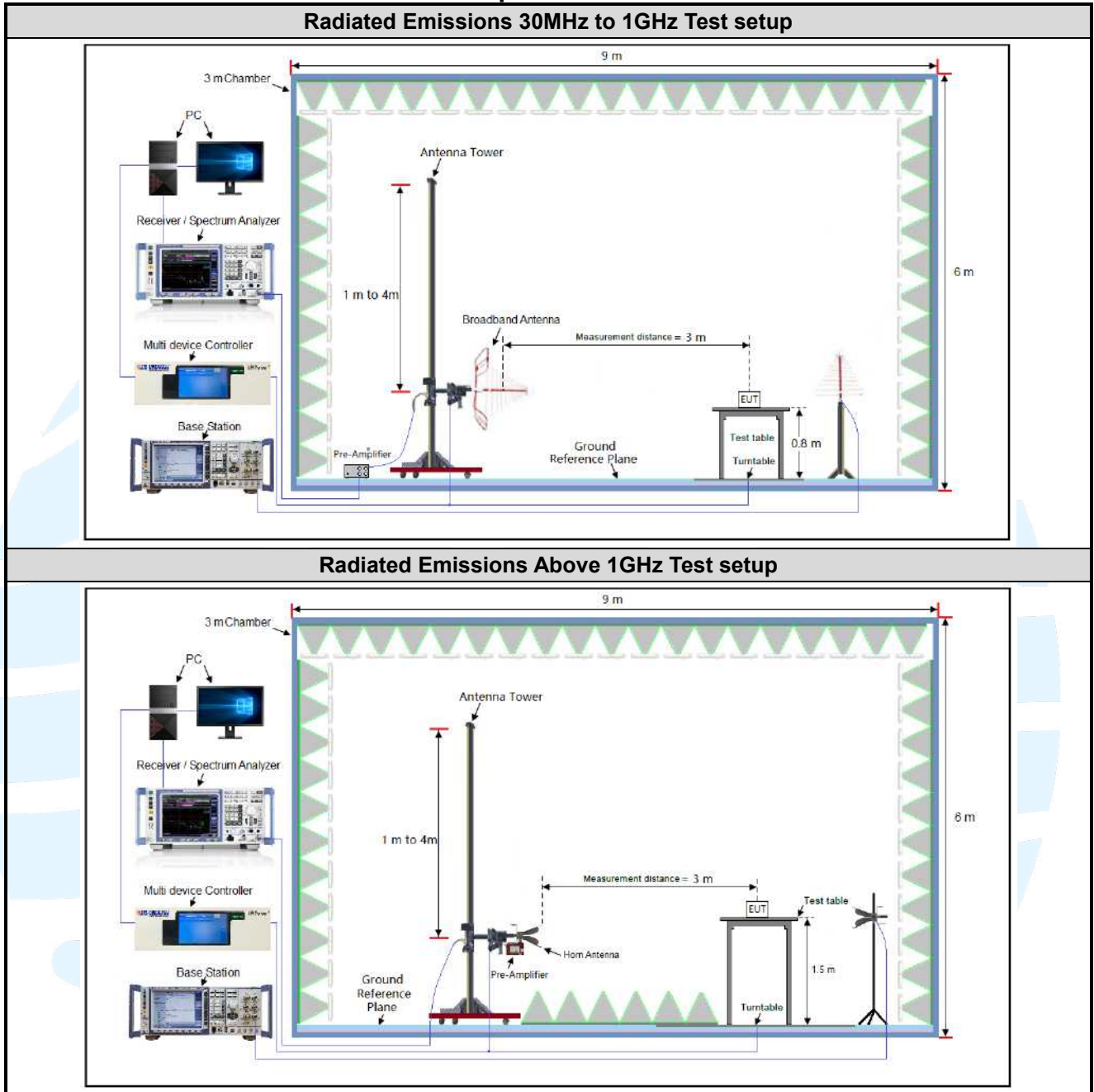
Test Environment	Selected Values During Tests		
Test Condition	Ambient		
	Temperature (°C)	Voltage (V)	Relative Humidity (%)
TN/VN	+15 to +35	3.85	20 to 75
TL/VL	-30	3.5	20 to 75
TH/VL	+50	3.5	20 to 75
TL/VH	-30	4.4	20 to 75
TH/VH	+50	4.4	20 to 75

Remark:

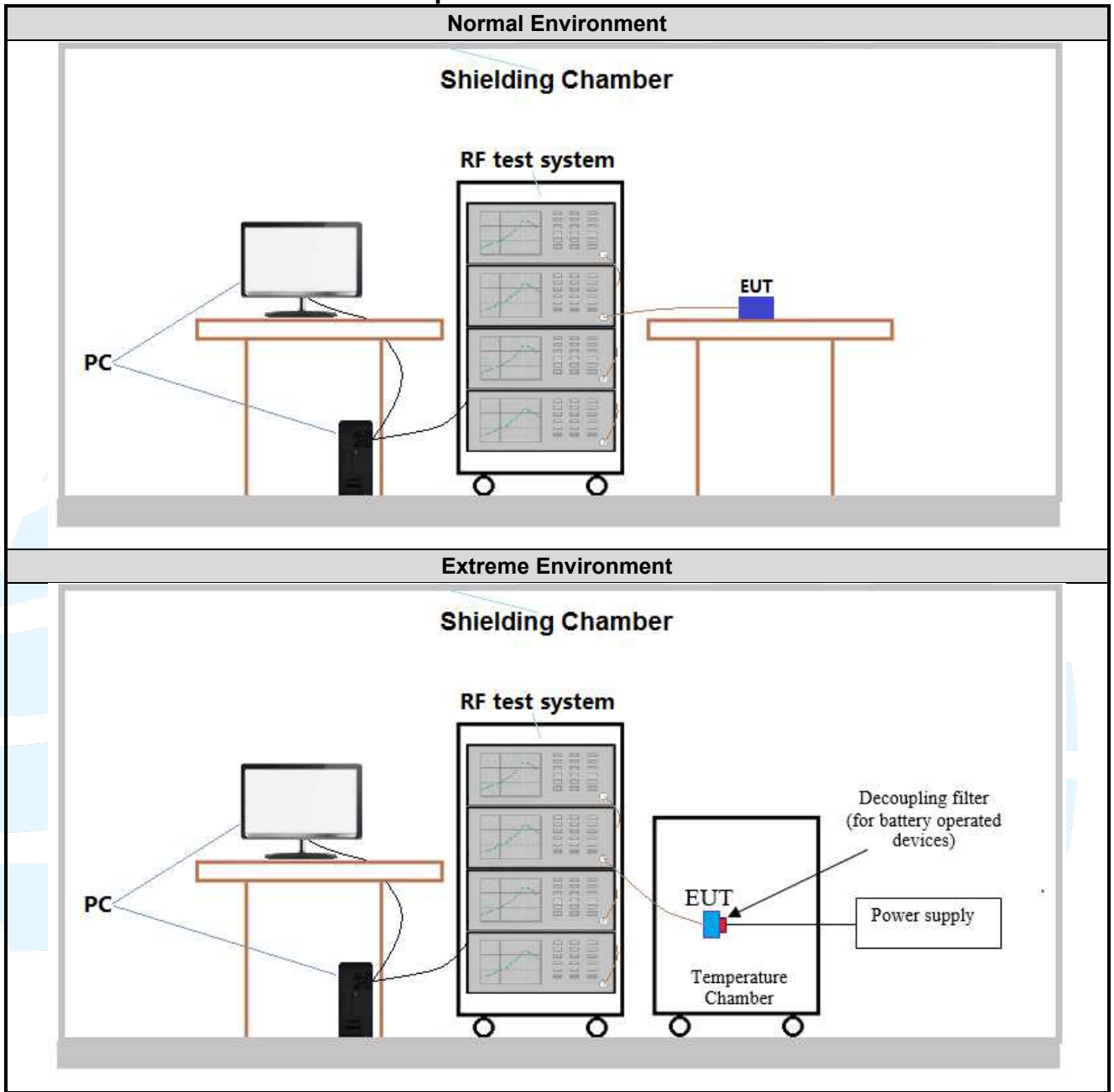
- 1) The EUT just work in such extreme temperature of -30 °C to +50 °C and the extreme voltage of 3.5 V to 4.4 V, so here the EUT is tested in the temperature of -30 °C to +50 °C and the voltage of 3.5 V to 4.4 V.
- 2) VN: Normal Voltage; TN: Normal Temperature;
 TL: Low Extreme Test Temperature; TH: High Extreme Test Temperature;
 VL: Low Extreme Test Voltage; VH: High Extreme Test Voltage.

4.2 TEST SETUP

4.2.1 For Radiated Emissions test setup



4.2.2 For Conducted RF test setup



4.3 TEST CHANNELS

Bands	Tx/Rx Frequency	RF Channel		
		Low(L)	Middle(M)	High(H)
GSM/GPRS/ EDGE850	Tx (824 MHz ~ 849 MHz)	Channel 128	Channel 190	Channel 251
		824.2 MHz	836.6 MHz	848.8 MHz
WCDMA band V	Tx (824 MHz ~ 849 MHz)	Channel 4132	Channel 4182	Channel 4233
		826.4 MHz	836.4 MHz	846.6 MHz

Bands	Tx/Rx Frequency	RF Channel		
		Low(L)	Middle(M)	High(H)
GSM/GPRS/ EDGE1900	Tx (1850 MHz-1910 MHz)	Channel 512	Channel 661	Channel 810
		1850.2 MHz	1880.0 MHz	1909.8 MHz
WCDMA Band II	Tx (1850 MHz-1910 MHz)	Channel 9262	Channel 9400	Channel 9538
		1852.4 MHz	1880.0 MHz	1907.6 MHz

Bands	Tx/Rx Frequency	RF Channel		
		Low(L)	Middle(M)	High(H)
WCDMA Band IV	Tx (1710 MHz-1755 MHz)	Channel 1312	Channel 1412	Channel 1513
		1712.4 MHz	1732.4 MHz	1752.6 MHz

4.4 SYSTEM TEST CONFIGURATION

For emissions testing, the equipment under test (EUT) setup to transmit continuously to simplify the measurement methodology. Care was taken to ensure proper power supply voltages during testing. During testing, radiated emission were performed with the EUT set to transmit at the channel with highest output power as worst-case scenario. It was powered by a 3.85Vdc rechargeable Li-on battery. Only the worst case data were recorded in this test report.

Pre-Scan has been conducted to determine the worst-case mode from all possible combinations between available modulations, data rates, X/Y/Z axis, and antenna ports. The worst case was found when positioned as the table below.

Bands	Mode	Antenna Port	Worst-case axis positioning
GSM 850	1TX	Chain 0	Y axis
PCS 1900	1TX	Chain 0	Y axis
WCDMA Band II	1TX	Chain 0	Y axis
WCDMA Band IV	1TX	Chain 0	Y axis
WCDMA Band V	1TX	Chain 0	Y axis

All readings are extrapolated back to the equivalent three meter reading using inverse scaling with distance. Analyzer resolution is 100 kHz or greater for frequencies below 1000MHz. The resolution is 1 MHz or greater for frequencies above 1000MHz. The spurious emissions more than 20 dB below the permissible value are not reported.

Radiated emission measurement were performed from the lowest radio frequency signal generated in the device which is greater than 9 kHz to the tenth harmonic of the highest fundamental frequency or to 40 GHz, whichever is lower.

4.5 PRE-SCAN

Pre-scan under all rate at lowest middle and highest channel, find the transmitter power as below:
SIM 1 Card Conducted transmitter power measurement result.

GSM 850 Maximum Average Power (dBm)			
Channel	128	190	251
Frequency(MHz)	824.2 MHz	836.6 MHz	848.8 MHz
GSM (GMSK, 1Tx-slot)	32.06	32.05	32.04
GPRS (GMSK, 1Tx-slot)	32.06	32.04	32.05
GPRS (GMSK, 2Tx-slot)	31.06	31.04	31.01
GPRS (GMSK, 3Tx-slot)	28.82	28.74	28.70
GPRS (GMSK, 4Tx-slot)	27.74	27.68	27.61
EDGE (8PSK, 1Tx-slot)	26.01	25.53	25.28
EDGE (8PSK, 2Tx-slot)	24.67	24.49	24.21
EDGE (8PSK, 3Tx-slot)	22.58	22.34	22.18
EDGE (8PSK, 4Tx-slot)	21.66	21.29	21.06

PCS 1900 Maximum Average Power (dBm)			
Channel	512	661	810
Frequency(MHz)	1850.2 MHz	1880.0 MHz	1909.8 MHz
GSM (GMSK, 1Tx-slot)	29.49	29.47	29.45
GPRS (GMSK, 1Tx-slot)	29.47	29.45	29.44
GPRS (GMSK, 2Tx-slot)	28.44	28.42	28.43
GPRS (GMSK, 3Tx-slot)	26.35	26.28	26.31
GPRS (GMSK, 4Tx-slot)	25.22	25.18	25.20
EDGE (8PSK, 1Tx-slot)	25.52	25.42	25.39
EDGE (8PSK, 2Tx-slot)	24.51	24.35	24.27
EDGE (8PSK, 3Tx-slot)	22.61	22.37	22.32
EDGE (8PSK, 4Tx-slot)	21.13	21.09	21.06

WCDMA Band II Maximum Average Power (dBm)			
Channel	9262	9400	9538
Frequency(MHz)	1852.4 MHz	1880.0 MHz	1907.6 MHz
RMC 12.2kbps	22.28	22.26	22.18
HSDPA Subtest-1	21.32	21.26	21.30
HSDPA Subtest-2	21.33	21.22	21.24
HSDPA Subtest-3	20.94	20.81	20.79
HSDPA Subtest-4	20.92	20.84	20.79
HSUPA Subtest-1	19.35	19.26	19.21
HSUPA Subtest-2	19.42	19.23	19.32
HSUPA Subtest-3	20.33	20.28	20.30
HSUPA Subtest-4	18.97	18.84	18.82
HSUPA Subtest-5	20.82	20.74	20.68

WCDMA Band IV Maximum Average Power (dBm)			
Channel	1312	1412	1513
Frequency(MHz)	1712.4 MHz	1732.4 MHz	1752.6 MHz
RMC 12.2kbps	22.15	22.12	22.09
HSDPA Subtest-1	21.18	21.17	21.09
HSDPA Subtest-2	21.14	21.18	21.08
HSDPA Subtest-3	20.75	20.77	20.67
HSDPA Subtest-4	20.74	20.67	20.61
HSUPA Subtest-1	19.27	19.24	19.17
HSUPA Subtest-2	19.21	19.16	19.14
HSUPA Subtest-3	20.21	20.18	20.14
HSUPA Subtest-4	18.75	18.69	18.63
HSUPA Subtest-5	20.71	20.67	20.62

WCDMA Band V Maximum Average Power (dBm)			
Channel	4132	4182	4233
Frequency(MHz)	826.4 MHz	836.4 MHz	846.6 MHz
RMC 12.2kbps	22.43	22.26	22.35
HSDPA Subtest-1	21.50	21.32	21.46
HSDPA Subtest-2	21.51	21.31	21.35
HSDPA Subtest-3	20.96	20.85	20.88
HSDPA Subtest-4	21.01	20.84	20.94
HSUPA Subtest-1	19.48	19.22	19.36
HSUPA Subtest-2	19.43	19.30	19.37
HSUPA Subtest-3	20.50	20.29	20.41
HSUPA Subtest-4	19.02	18.85	18.95
HSUPA Subtest-5	20.94	20.78	20.84

Pre-scan all bandwidth and RB, find worse case mode are chosen to the report, the worse mode applicability and tested channel detail as below:

Band	Radiated	Conducted
GSM/GPRS/EDGE 850/1900	1) GSM (GMSK, 1Tx-slot) Link 2) GPRS (GMSK, 1Tx-slot) Link 3) EDGE (8PSK, 1Tx-slot) Link	1) GSM (GMSK, 1Tx-slot) Link 2) GPRS (GMSK, 1Tx-slot) Link 3) EDGE (8PSK, 1Tx-slot) Link
WCDMA Band II/IVV	RMC 12.2kbps Link	RMC 12.2kbps Link

5. RADIO TECHNICAL REQUIREMENTS SPECIFICATION

5.1 REFERENCE DOCUMENTS FOR TESTING

No.	Identity	Document Title
1	FCC 47 CFR Part 2	Frequency allocations and radio treaty matters; general rules and regulations
2	FCC 47 CFR Part 22	Public Mobile Services
3	FCC 47 CFR Part 27	Miscellaneous Wireless Communications Services
4	FCC 47 CFR Part 24	Personal Communications Services
5	ANSI C63.26-2015	American National Standard for Compliance Testing of Transmitters Used in Licensed Radio Services
6	KDB 971168 D01	KDB 971168 D01 Power Meas License Digital Systems v03r01

5.2 MAXIMUM ERP/EIRP

Test Requirement: FCC 47 CFR Part 2.1046(a),
 FCC 47 CFR Part 22.913(a),
 FCC 47 CFR Part 24.232(c),
 FCC 47 CFR Part 27.50(d)(4)

Test Method: KDB 971168 D01v03r01 Section 5.6 & ANSI C63.26-2015

Limit:

FCC 47 CFR Part 22.913(a)

The ERP of mobile transmitters and auxiliary test transmitters must not exceed 7 Watts.

FCC 47 CFR Part 24.232(c)

Mobile and portable stations are limited to 2 watts EIRP.

FCC 47 CFR Part 27.50(d)(4)

Fixed, mobile, and portable (hand-held) stations operating in the 1710-1755 MHz band and mobile and portable stations operating in the 1695-1710 MHz and 1755-1780 MHz bands are limited to 1 watt EIRP.

Test Procedure:

$$ERP \text{ or } EIRP = P_{Meas} + G_T - L_C$$

where:

ERP or EIRP = effective radiated power or equivalent isotropically radiated power, respectively (expressed in the same units as P_{Meas}, typically dBW or dBm);

P_{Meas} = measured transmitter output power or PSD, in dBm or dBW;

G_T = gain of the transmitting antenna, in dBd (ERP) or dBi (EIRP);

L_C = signal attenuation in the connecting cable between the transmitter and antenna, in dB.

Test Setup: Refer to section 4.2.1 for details.

Instruments Used: Refer to section 3 for details

Test Mode: Link mode

Test Results: Pass

Test Data: See table below

Bands	Modulation	Max. Conducted Avg.	Ant. Gain	Limit	ERP		Result
		(dBm)	(dBi)	(W)	(dBm)	(W)	
GSM 850 (824-849 MHz)	GPRS	32.06	-0.70	7.0	29.21	0.833681	Pass
	EDGE	26.01	-0.70		23.86	0.243220	Pass
WCDMA Band V (824-849 MHz)	RMC 12.2kbps	22.43	-0.70	7.0	19.58	0.090782	Pass
	HSUPA	20.84	-0.70		17.99	0.062951	Pass
	HSDPA	21.51	-0.70		18.66	0.073451	Pass

Bands	Modulation	Max. Conducted Avg.	Ant. Gain	Limit	EIRP		Result
		(dBm)	(dBi)	(W)	(dBm)	(W)	
PCS 1900 (1850-1910 MHz)	GPRS	29.49	0.70	2.0	30.19	1.044720	Pass
	EDGE	21.13	0.70		21.83	0.152405	Pass
WCDMA Band II (1850-1910 MHz)	RMC 12.2kbps	22.28	0.70	2.0	22.98	0.198609	Pass
	HSUPA	20.82	0.70		21.52	0.141906	Pass
	HSDPA	21.33	0.70		22.03	0.159588	Pass
WCDMA Band IV (1710-1755 MHz)	RMC 12.2kbps	22.15	0.70	1.0	22.85	0.192752	Pass
	HSUPA	20.67	0.70		21.37	0.137088	Pass
	HSDPA	21.18	0.70		21.88	0.154170	Pass

Shenzhen UnionTrust Quality and Technology Co., Ltd.

Address: 16/F, Block A, Building 6, Baoneng Science and Technology Park, Qingxiang Road No.1, Longhua New District, Shenzhen, China

Tel: +86-755-28230888

Fax: +86-755-28230886

E-mail: info@uttlab.com

<http://www.uttlab.com>

UTTR-RF-FCC23G-V1.0

5.3 CONDUCTED OUTPUT POWER

Test Requirement: FCC 47 CFR Part 2.1046(a),
 FCC 47 CFR Part 22.913(a),
 FCC 47 CFR Part 24.232(c),
 FCC 47 CFR Part 27.50(d)(4)

Test Method: KDB 971168 D01v03r01 & ANSI C63.26-2015

Limit:

FCC 47 CFR Part 22.913(a)

The ERP of mobile transmitters and auxiliary test transmitters must not exceed 7 Watts.

FCC 47 CFR Part 24.232(c)

Mobile and portable stations are limited to 2 watts EIRP.

FCC 47 CFR Part 27.50(d)(4)

Fixed, mobile, and portable (hand-held) stations operating in the 1710-1755 MHz band and mobile and portable stations operating in the 1695-1710 MHz and 1755-1780 MHz bands are limited to 1 watt EIRP.

Test Procedure:

The EUT was set up for the maximum power with GSM, GPRS, EDGE, WCDMA, CDMA2000, and LTE link data modulation and link up with simulator. Set the EUT to transmit under low, middle and high channel and record the power level shown on simulator.

Note: The cable loss and attenuator loss were offset into measure device as an amplitude offset.

Test Setup: Refer to section 4.2.2 for details.

Instruments Used: Refer to section 3 for details

Test Mode: Link mode

Test Results: Pass

Test Data: The full result refer to section 4.5 for details.

5.4 PEAK-TO-AVERAGE RATIO

Test Requirement: FCC 47 CFR Part 22.913(a),
 FCC 47 CFR Part 24.232(c),
 FCC 47 CFR Part 27.50(d)(5)

Test Method: KDB 971168 D01v03r01 Section 5.7

Limit: In measuring transmissions in this band using an average power technique, the peak-to-average ratio (PAR) of the transmission may not exceed 13 dB

Test Procedure:

The EUT was connected to Spectrum Analyzer and Base Station via power divider. The RF output of EUT was connected to the spectrum analyzer by RF cable and attenuator. The path loss was compensated to the results for each measurement.

Some regulatory requirements specify a PAPR limit when the output power limits are specified in terms of average power. If it becomes necessary to provide measurement data to demonstrate compliance to a PAPR limit, then the appropriate procedure from those provided in 5.2.3 shall be utilized to determine the peak power (or peak PSD) and the appropriate procedure from those provided in 5.2.4 shall be used to determine the average power (or average PSD). The data from these measurements is then used in Equation (2) to determine the PAPR of a narrowband CW-like signal. See 5.2.3.4 for guidance on determining the PAPR of a broadband noise-like signal.

$$PAPR (dB) = PPK (dBm \text{ or } dBW) - PAvg (dBm \text{ or } dBW)$$

where:

PAPR peak-to-average power ratio, in dB;

PPk measured peak power or peak PSD level, in dBm or dBW;

PAvg measured average power or average PSD level, in dBm or dBW.

OR

The transmitter output was connected to a calibrated coaxial cable and coupler, the other end of which was connected to a spectrum analyzer.

- a) Set resolution/measurement bandwidth \geq signal's occupied bandwidth
- b) Set the number of counts to a value that stabilizes the measured CCDF curve
- c) Record the maximum PAPR level associated with a probability of 0.1 %

Note: The cable loss and attenuator loss were offset into measure device as an amplitude offset.

Test Setup: Refer to section 4.2.2 for details.

Instruments Used: Refer to section 3 for details

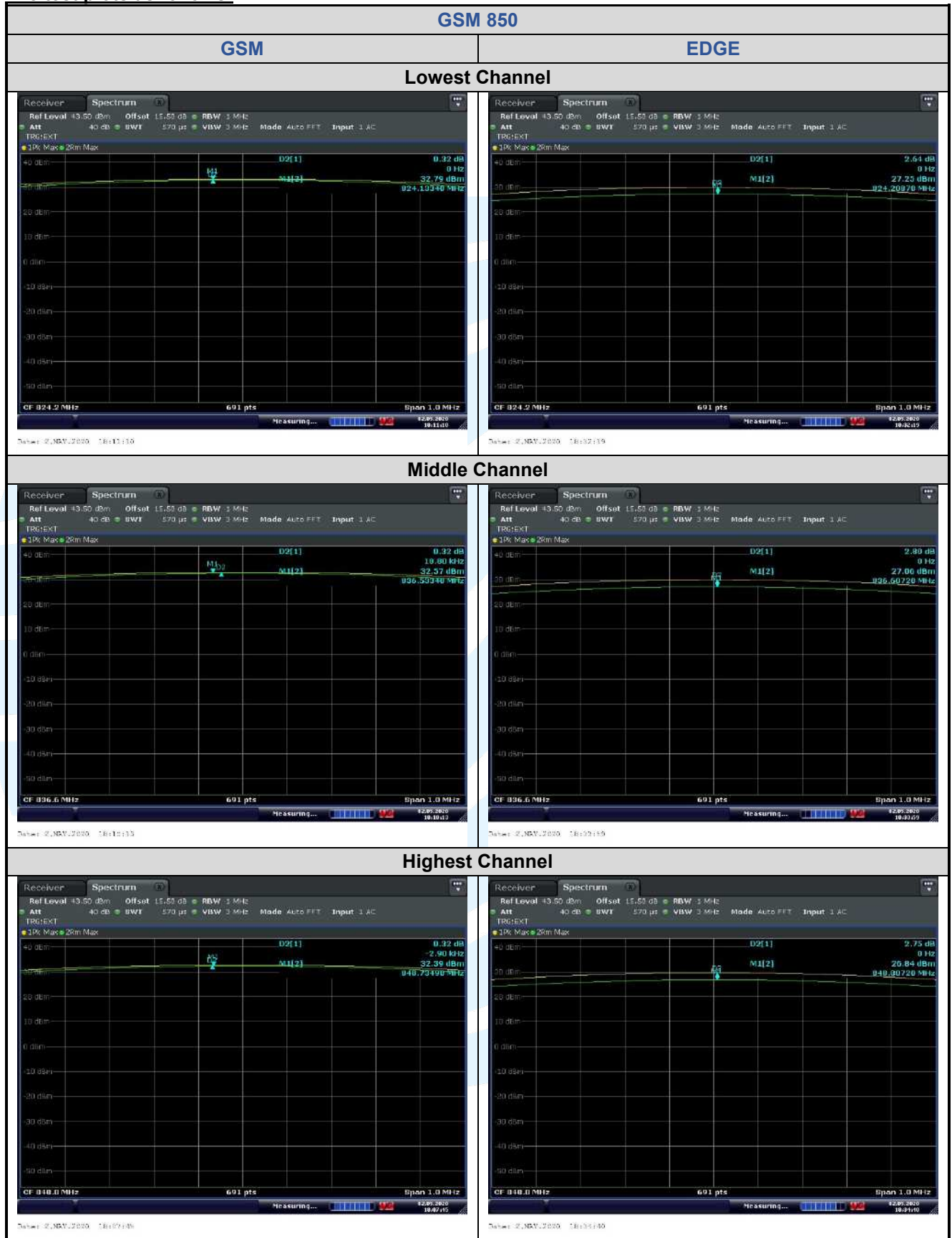
Test Mode: Link mode

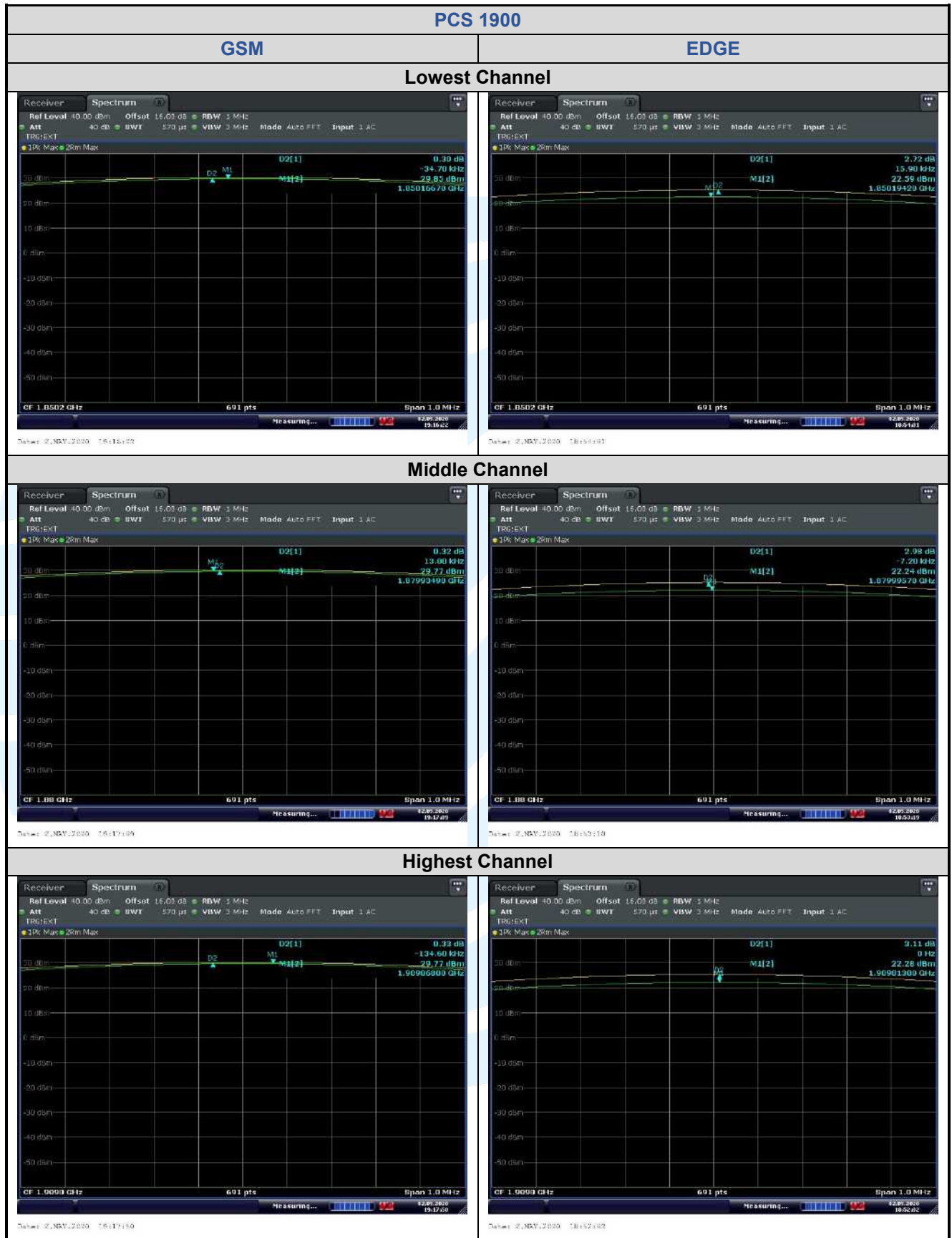
Test Results: Pass

Test Data: See table below

Bands	Modulation	Peak-to-average ratio (dB)			Limit (dBm)	Result
		Lowest	Middle	Highest		
GSM 850	GSM	0.32	0.32	0.32	13	Pass
	EDGE	2.64	2.80	2.75	13	Pass
PCS 1900	GSM	0.30	0.32	0.33	13	Pass
	EDGE	2.72	2.98	3.11	13	Pass
WCDMA Band II	RMC 12.2kbps	2.83	2.69	2.93	13	Pass
WCDMA Band IV	RMC 12.2kbps	3.38	3.12	3.19	13	Pass
WCDMA Band V	RMC 12.2kbps	3.07	3.09	2.97	13	Pass

The test plots as follows:





Shenzhen UnionTrust Quality and Technology Co., Ltd.

Address: 16/F, Block A, Building 6, Baoneng Science and Technology Park, Qingxiang Road No.1, Longhua New District, Shenzhen, China

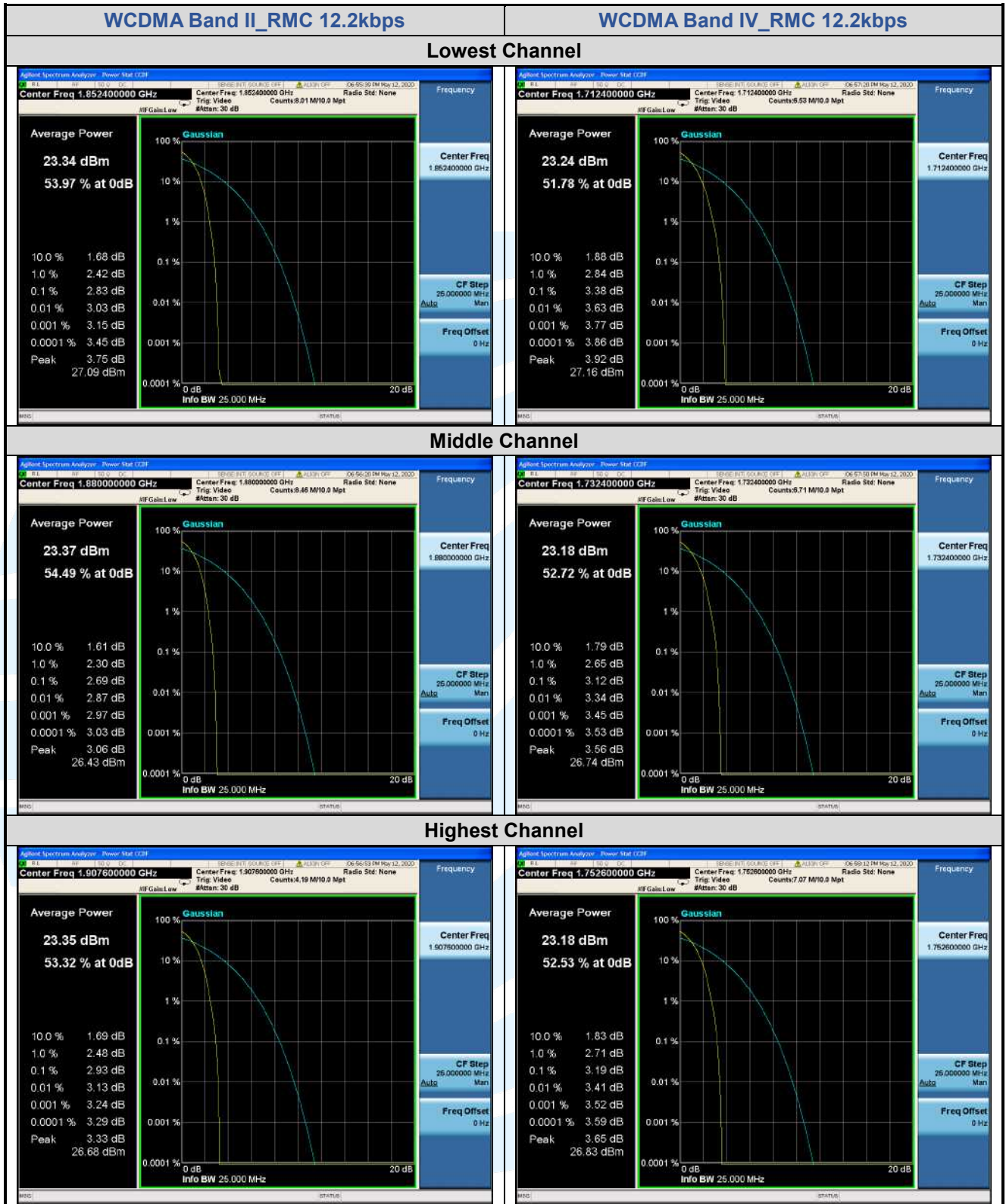
Tel: +86-755-28230888

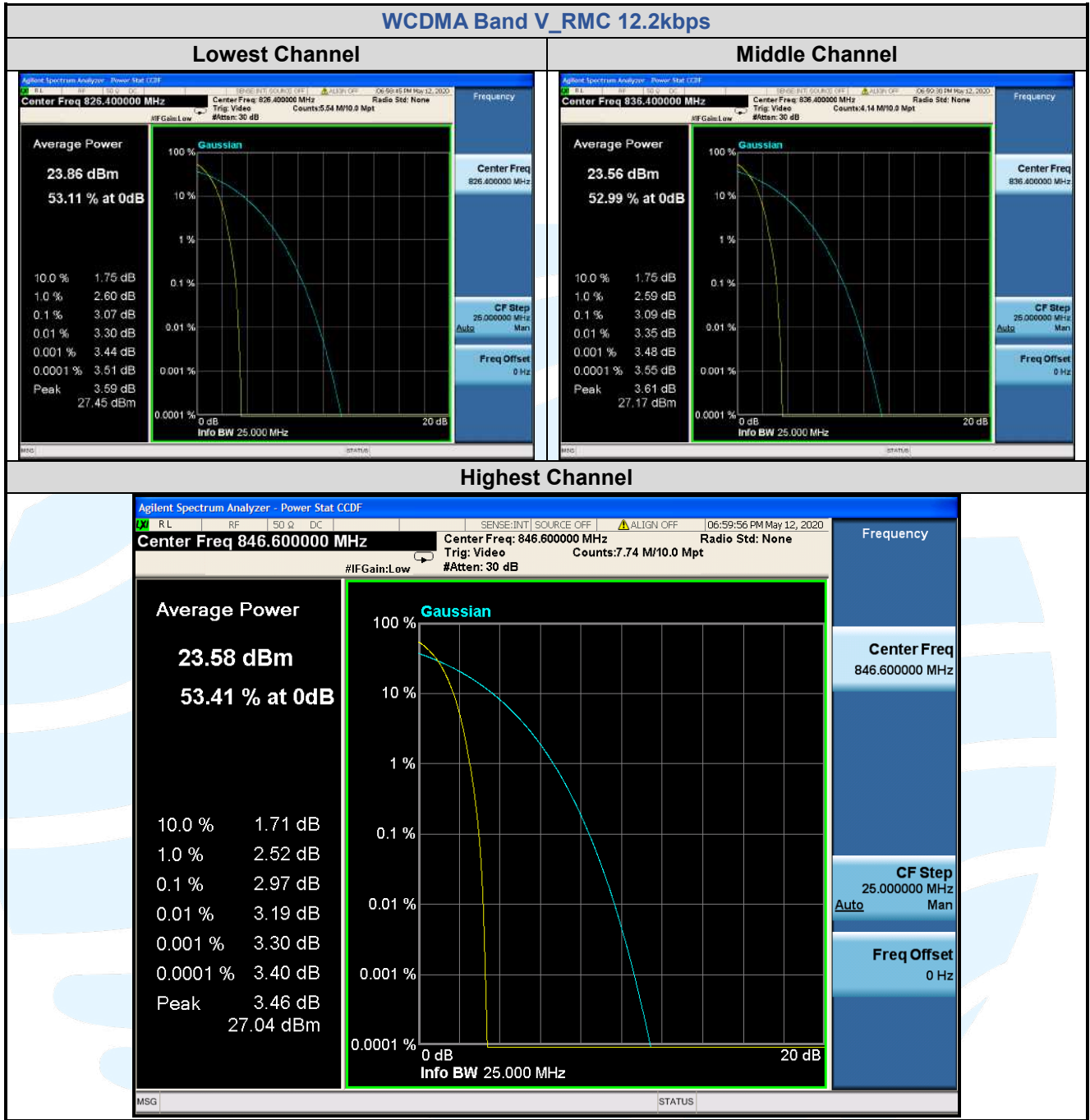
Fax: +86-755-28230886

E-mail: info@uttlab.com

<http://www.uttlab.com>

UTTR-RF-FCC23G-V1.0





5.599%&26DB BANDWIDTH

Test Requirement: FCC 47 CFR Part 2.1049(h),
 FCC 47 CFR Part 22.917(b),
 FCC 47 CFR Part 24.238(b),
 FCC 47 CFR Part 27.53(h)

Test Method: ANSI C63.26-2015 & KDB 971168 D01v03r01 Section 4

Limit: No Limit, for reporting purposes only.

Test Procedure:

The transmitter output was connected to a calibrated coaxial cable and coupler, the other end of which was connected to a spectrum analyzer. The occupied bandwidth was measured with the spectrum analyzer at the low, middle and high channel in each band. The 99% and -26dB bandwidths was also measured and recorded.

Note: The cable loss and attenuator loss were offset into measure device as an amplitude offset.

Test Setup: Refer to section 4.2.2 for details.

Instruments Used: Refer to section 3 for details

Test Mode: Link mode

Test Results: Pass

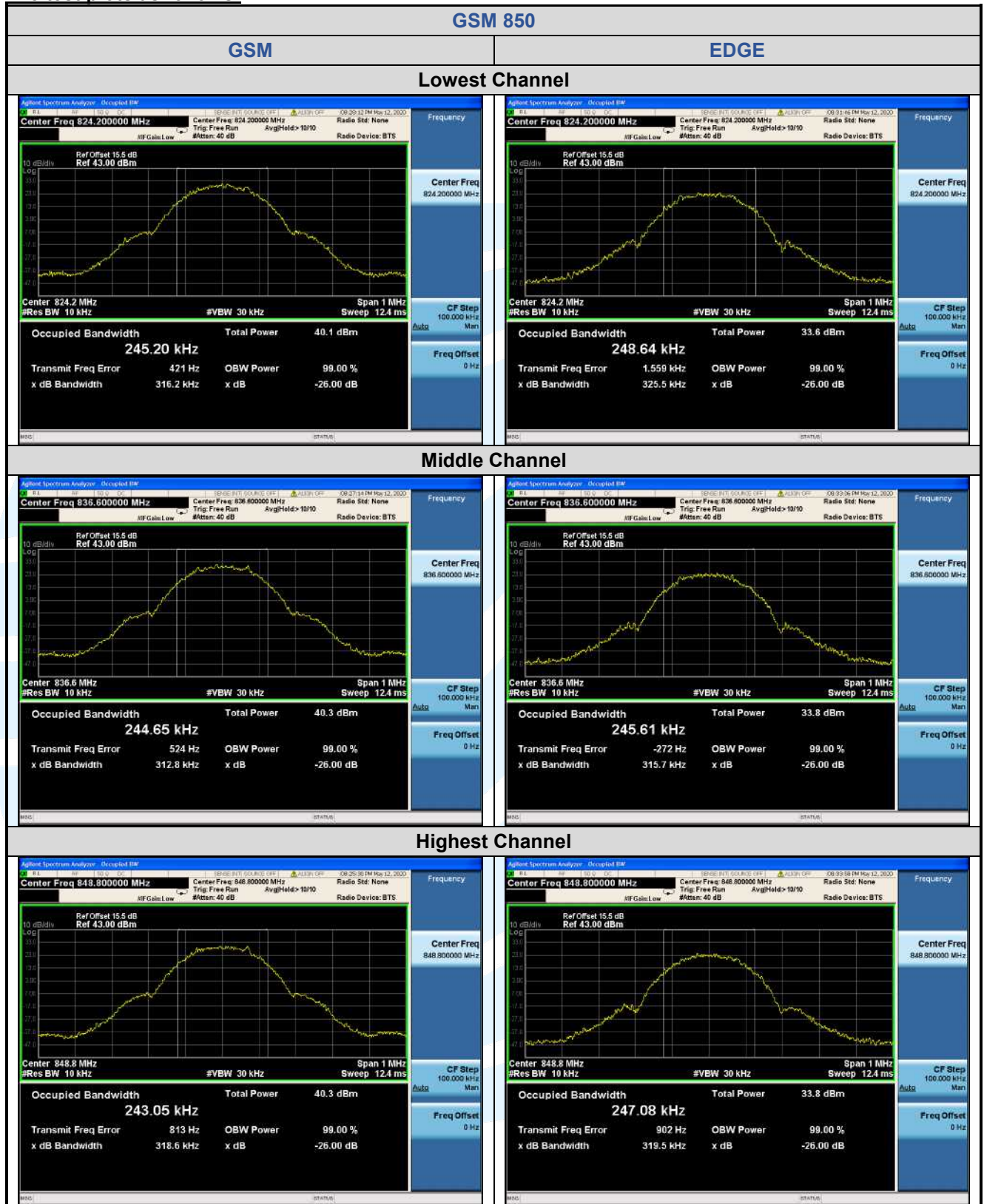
Test Data: See table below

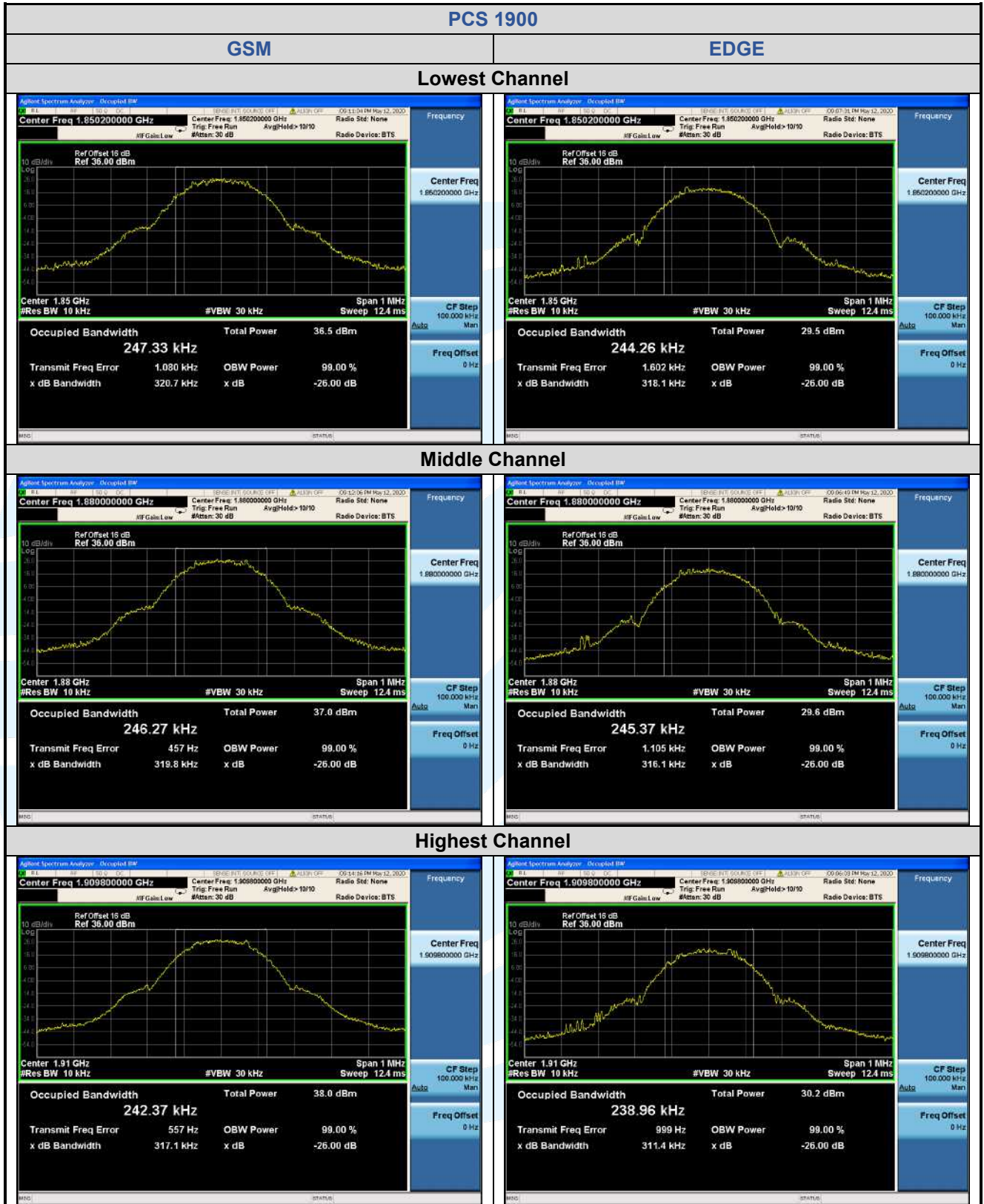
Bands	Modulation	Channel	Frequency (MHz)	26 dB BW (kHz)	99% BW (kHz)
GSM 850	GSM	128	824.2	316.2	245.20
		190	836.6	312.8	244.65
		251	848.8	318.6	243.05
	EDGE	128	824.2	325.5	248.64
		190	836.6	315.7	245.61
		251	848.8	319.5	247.08
PCS 1900	GSM	512	1850.2	320.7	247.33
		661	1880.0	319.8	246.27
		810	1909.8	317.1	242.37
	EDGE	512	1850.2	318.1	244.26
		661	1880.0	316.1	245.37
		810	1909.8	311.4	238.96

Bands	Modulation	Channel	Frequency (MHz)	26 dB BW (MHz)	99% BW (MHz)
WCDMA Band II	RMC 12.2kbps	9262	1852.4	4.713	4.1667
		9400	1880.0	4.727	4.1732
		9538	1907.6	4.698	4.1680
WCDMA Band IV	RMC 12.2kbps	1312	1712.4	4.685	4.1588
		1412	1732.4	4.709	4.1708
		1513	1752.6	4.692	4.1574
WCDMA Band V	RMC 12.2kbps	4132	826.4	4.696	4.1543
		4182	836.4	4.701	4.1629
		4233	846.6	4.701	4.1566

Shenzhen UnionTrust Quality and Technology Co., Ltd.

The test plots as follows:





Shenzhen UnionTrust Quality and Technology Co., Ltd.

Address: 16/F, Block A, Building 6, Baoneng Science and Technology Park, Qingxiang Road No.1, Longhua New District, Shenzhen, China

Tel: +86-755-28230888

Fax: +86-755-28230886

E-mail: info@uttlab.com

<http://www.uttlab.com>

UTTR-RF-FCC23G-V1.0



Shenzhen UnionTrust Quality and Technology Co., Ltd.

Address: 16/F, Block A, Building 6, Baoneng Science and Technology Park, Qingxiang Road No.1, Longhua New District, Shenzhen, China

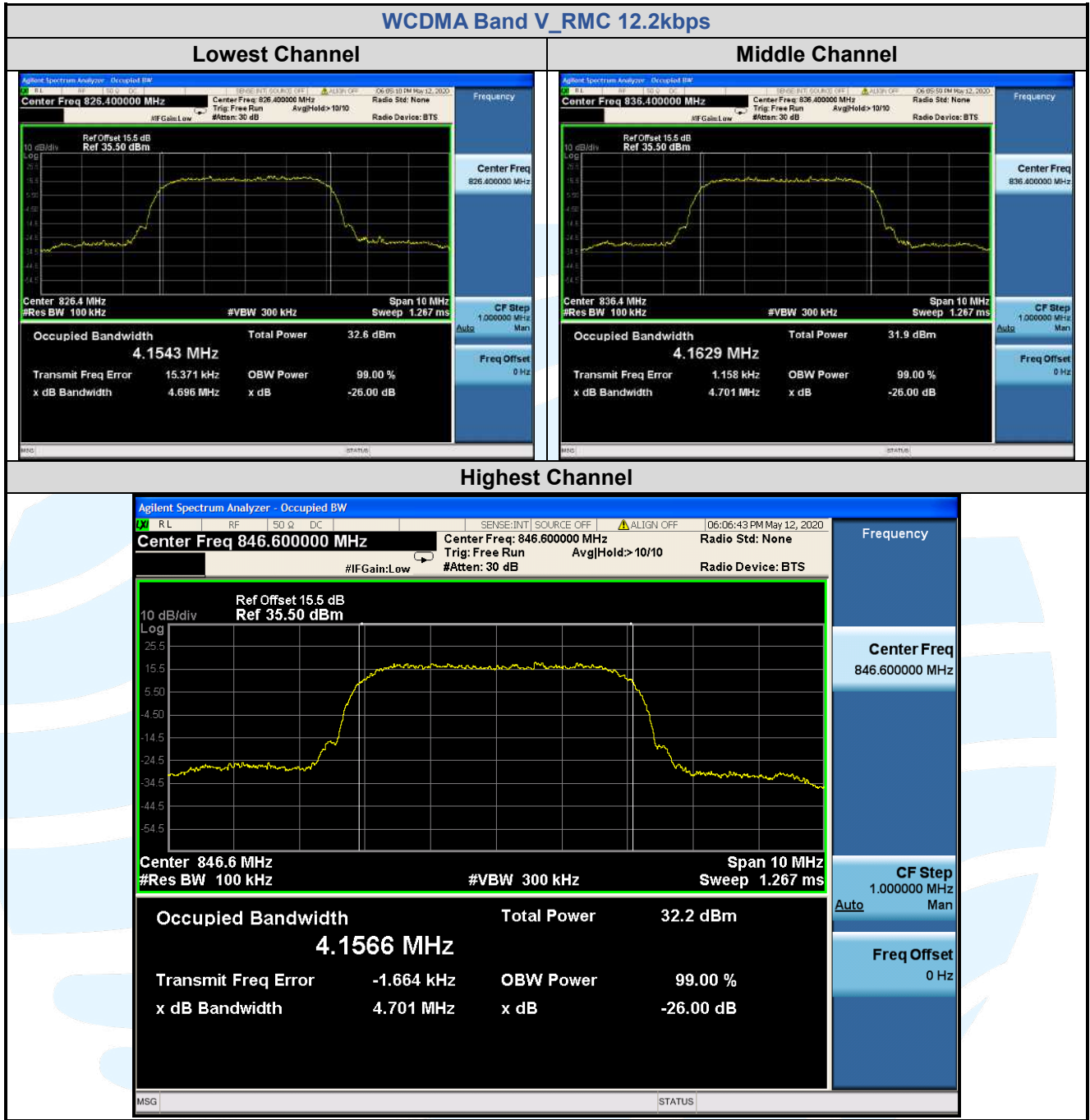
Tel: +86-755-28230888

Fax: +86-755-28230886

E-mail: info@uttlab.com

<http://www.uttlab.com>

UTTR-RF-FCC23G-V1.0



5.6 BAND EDGE AT ANTENNA TERMINALS

Test Requirement: FCC 47 CFR Part 2.1051,
FCC 47 CFR Part 22.917(a),
FCC 47 CFR Part 24.238(a),
FCC 47 CFR Part 27.53(h)(1)

Test Method: ANSI C63.26-2015 & KDB 971168 D01v03r01

Limit:

The power of any emission outside of the authorized operating frequency ranges must be attenuated below the transmitting power (P) by a factor of at least $43 + 10 \log(P)$ dB. The emission limit equal to -13 dBm.

Test Procedure:

The transmitter output was connected to a calibrated coaxial cable and coupler, the other end of which was connected to a spectrum analyzer.

For each band edge measurement:

- 1) Set the spectrum analyzer span to include the block edge frequency.
- 2) Set a marker to point the corresponding band edge frequency in each test case.
- 3) Set display line at -13 dBm
- 4) Set resolution bandwidth to at least 1% of emission bandwidth.
- 5) Set spectrum analyzer with RMS detector.
- 6) Record the max trace plot into the test report

Note: The cable loss and attenuator loss were offset into measure device as an amplitude offset.

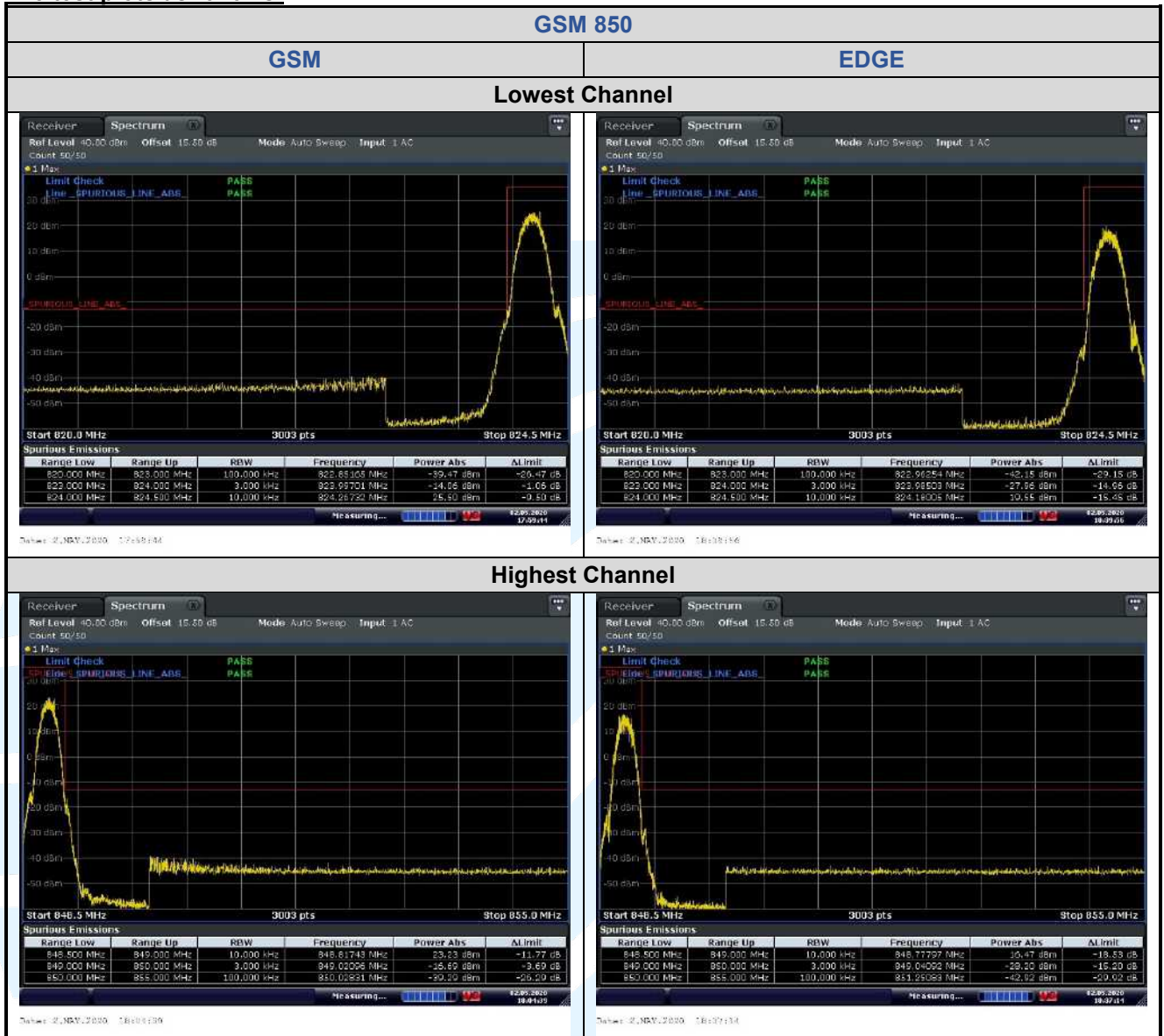
Test Setup: Refer to section 4.2.2 for details.

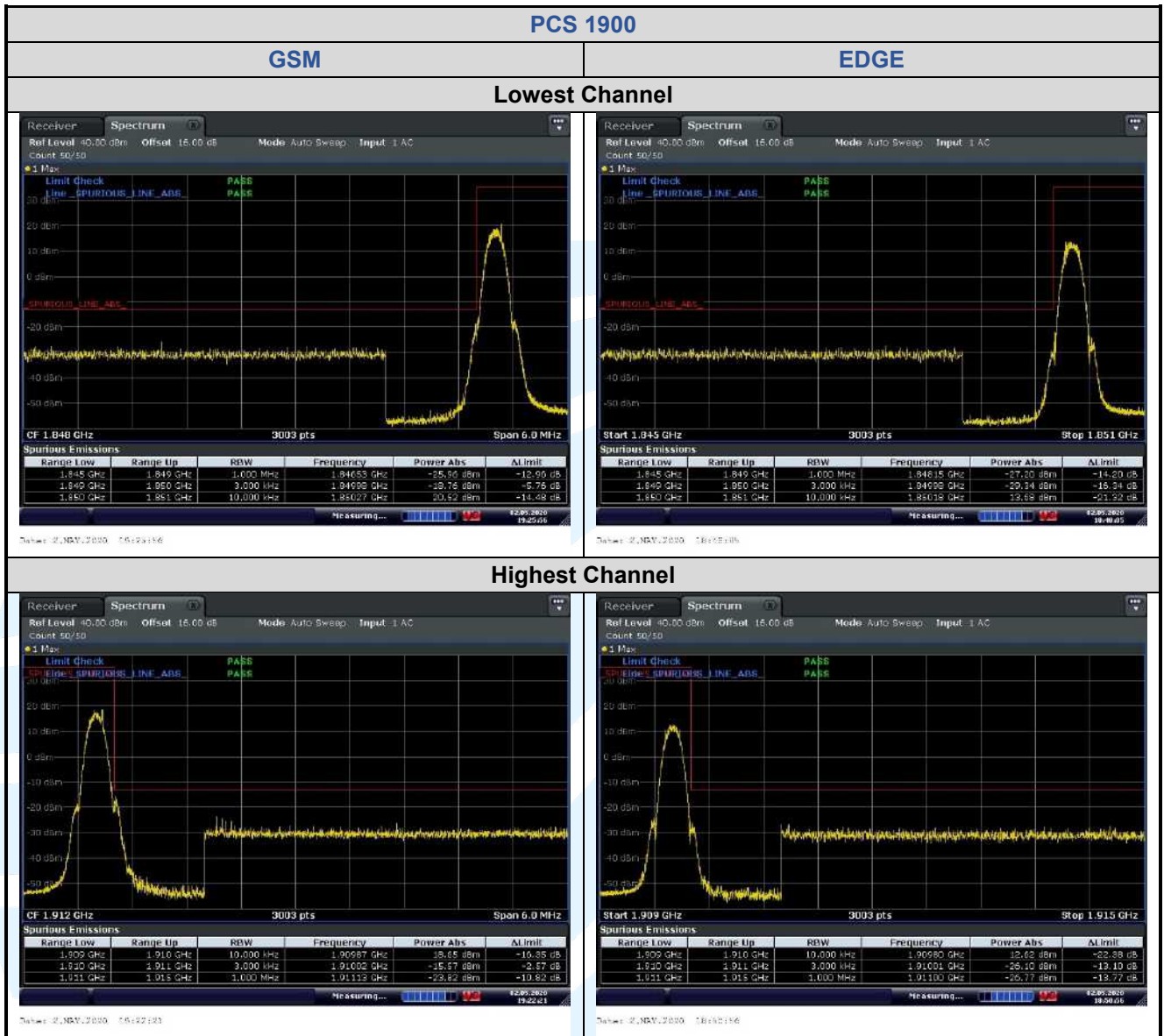
Instruments Used: Refer to section 3 for details

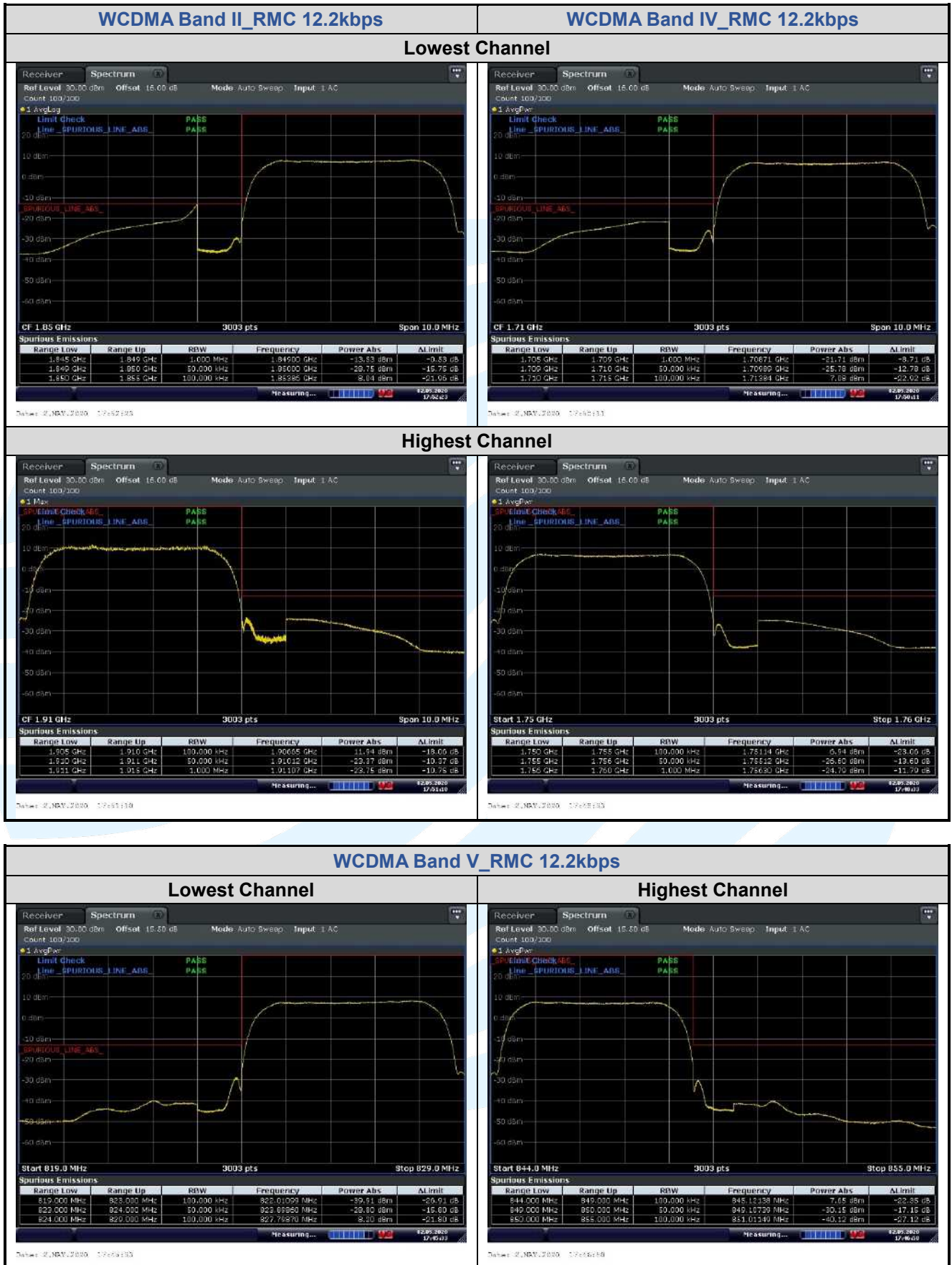
Test Mode: Link mode

Test Results: Pass

The test plots as follows:







5.7 SPURIOUS EMISSIONS AT ANTENNA TERMINALS

Test Requirement: FCC 47 CFR Part 2.1051,
 FCC 47 CFR Part 22.917(a)(b),
 FCC 47 CFR Part 24.238(a)(b),
 FCC 47 CFR Part 27.53(h)(1)

Test Method: ANSI C63.26-2015 & KDB 971168 D01v03r01

Limit:
 The power of any emission outside of the authorized operating frequency ranges must be attenuated below the transmitting power (P) by a factor of at least $43 + 10 \log(P)$ dB. The emission limit equal to -13 dBm.

Test Procedure:
 The EUT makes a phone call to the communication simulator. All measurements were done at low, middle and high operational frequency range. b. Measuring frequency range is from 30 MHz to the tenth harmonic of the highest fundamental frequency or to 40 GHz, whichever is lower. Set RBW & VBW to 100 kHz for the measurement below 1 GHz, and 1 MHz for the measurement above 1 GHz.

Note: The cable loss and attenuator loss were offset into measure device as an amplitude offset.

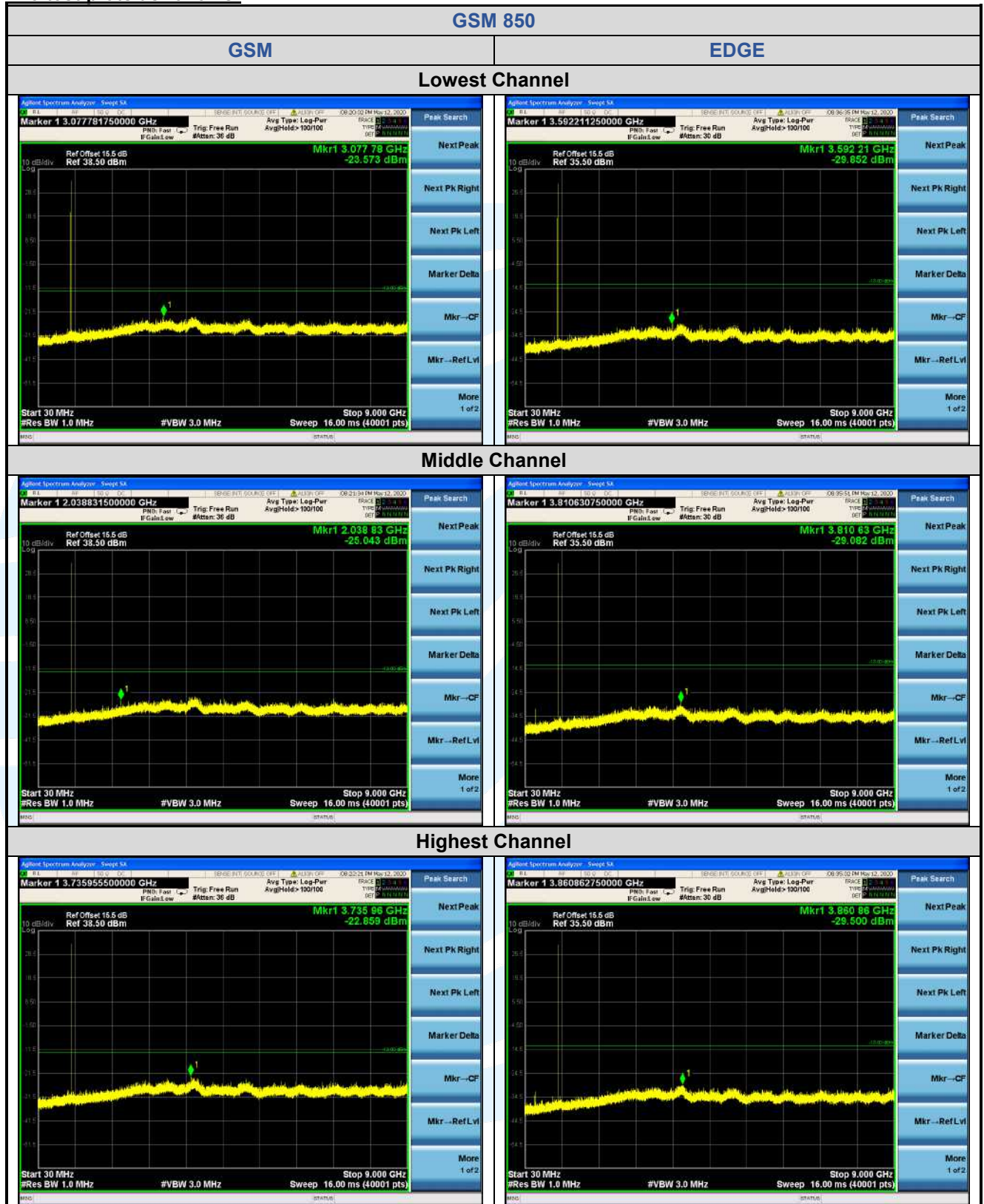
Test Setup: Refer to section 4.2.2 for details.

Instruments Used: Refer to section 3 for details

Test Mode: Link mode

Test Results: Pass

The test plots as follows:



Shenzhen UnionTrust Quality and Technology Co., Ltd.

Address: 16/F, Block A, Building 6, Baoneng Science and Technology Park, Qingxiang Road No.1, Longhua New District, Shenzhen, China

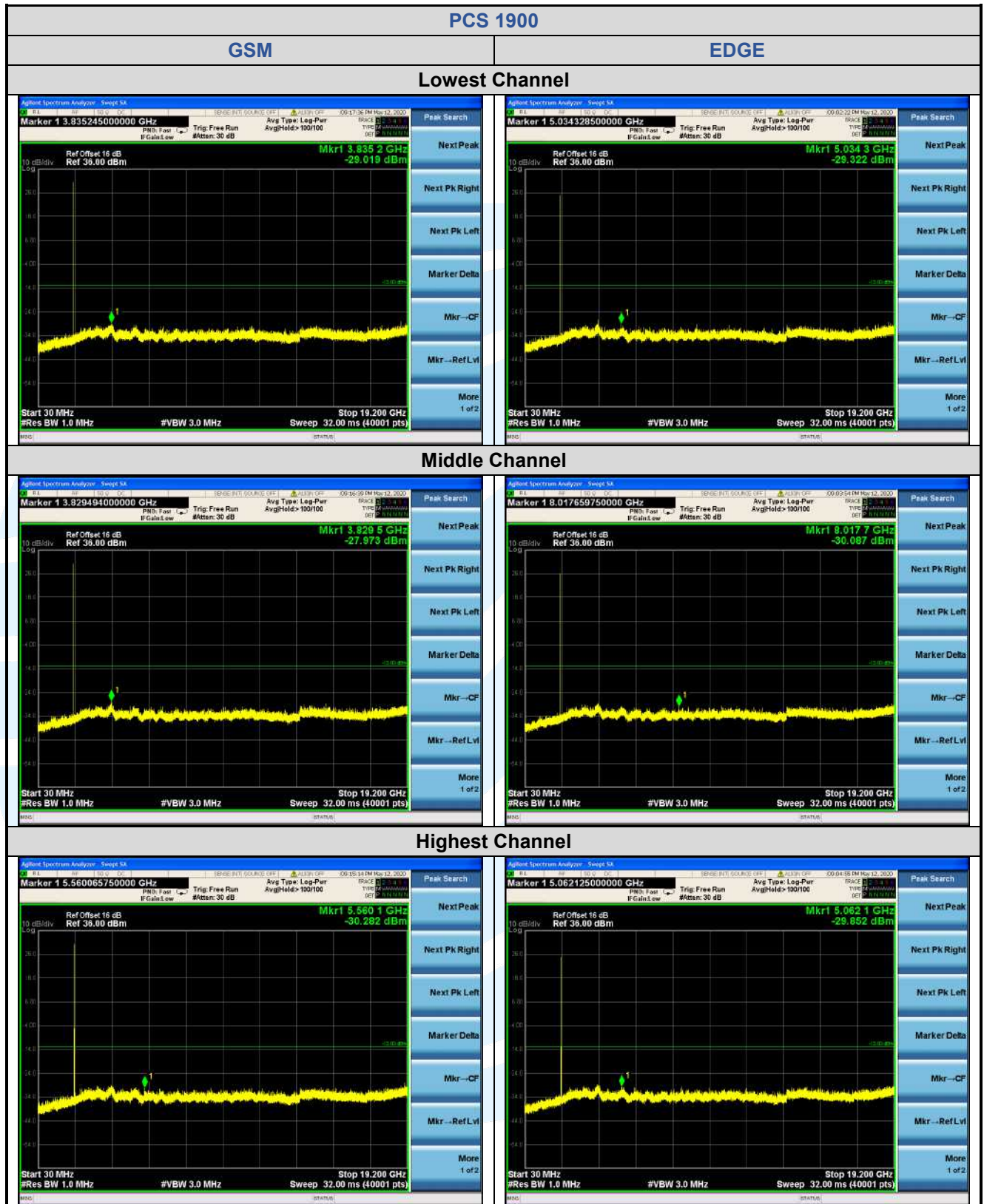
Tel: +86-755-28230888

Fax: +86-755-28230886

E-mail: info@uttlab.com

<http://www.uttlab.com>

UTTR-RF-FCC23G-V1.0



Shenzhen UnionTrust Quality and Technology Co., Ltd.

Address: 16/F, Block A, Building 6, Baoneng Science and Technology Park, Qingxiang Road No.1, Longhua New District, Shenzhen, China

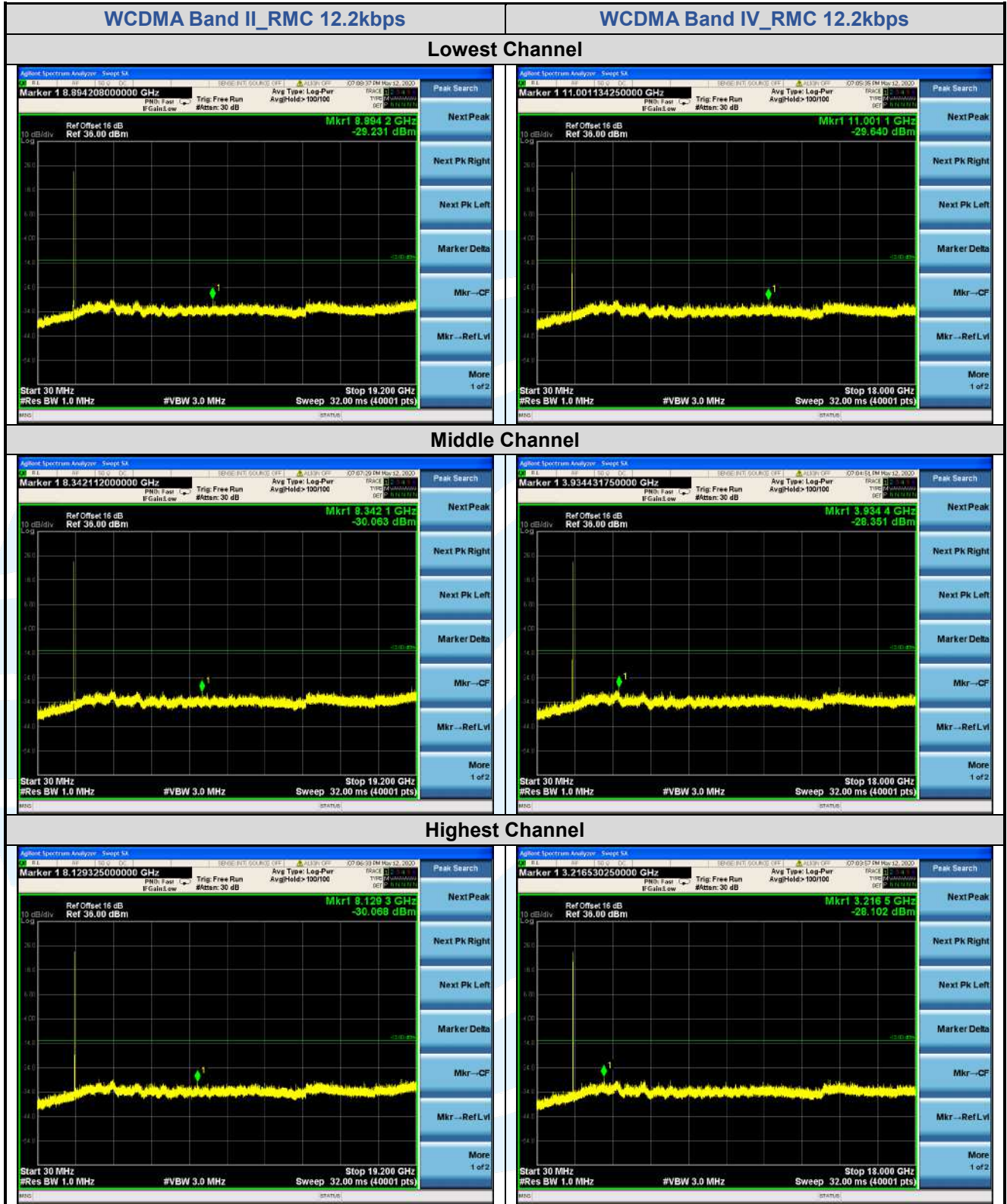
Tel: +86-755-28230888

Fax: +86-755-28230886

E-mail: info@uttlab.com

<http://www.uttlab.com>

UTTR-RF-FCC23G-V1.0



Shenzhen UnionTrust Quality and Technology Co., Ltd.

Address: 16/F, Block A, Building 6, Baoneng Science and Technology Park, Qingxiang Road No.1, Longhua New District, Shenzhen, China

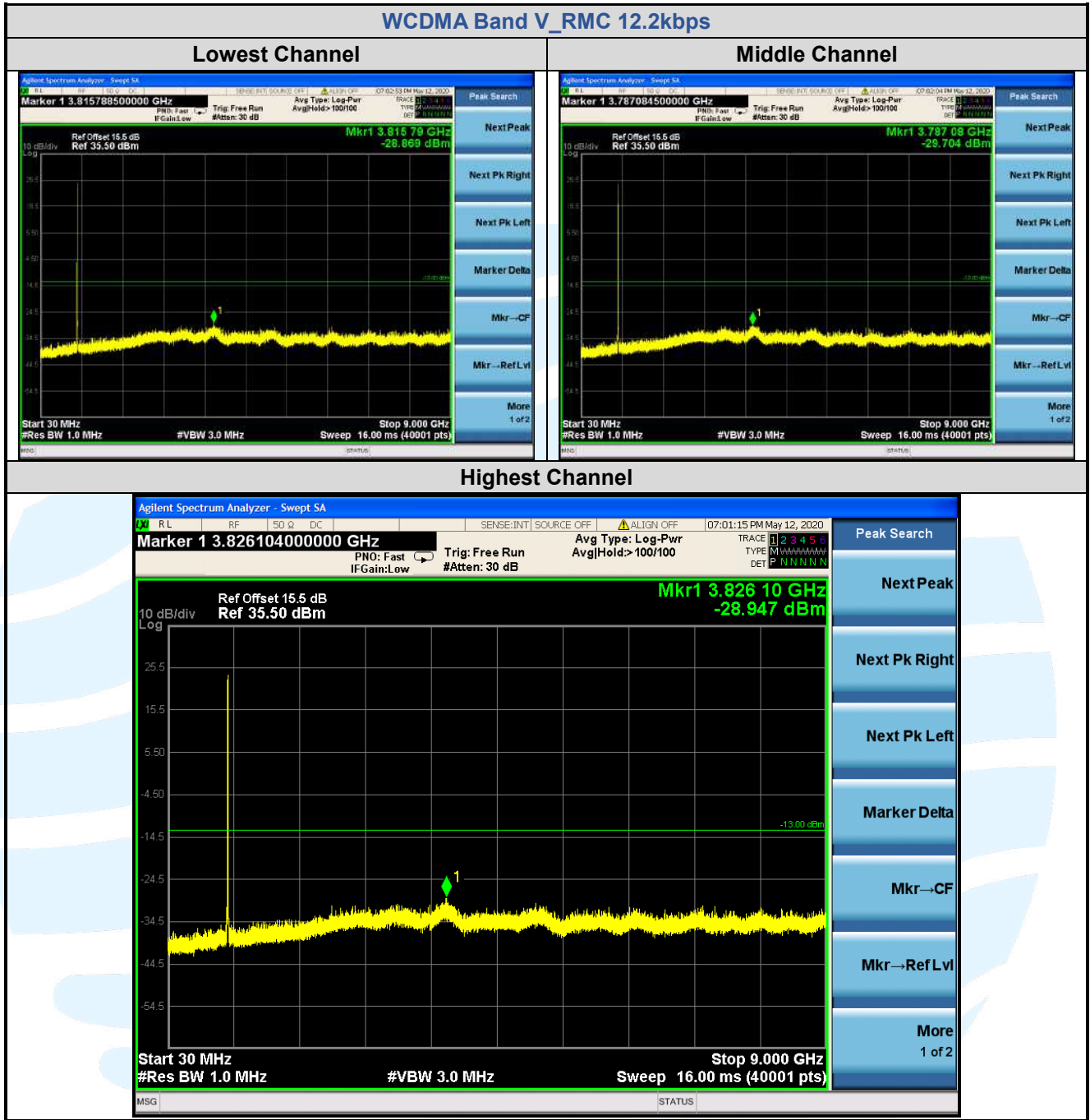
Tel: +86-755-28230888

Fax: +86-755-28230886

E-mail: info@uttlab.com

<http://www.uttlab.com>

UTTR-RF-FCC23G-V1.0



5.8 FIELD STRENGTH OF SPURIOUS RADIATION

Test Requirement: FCC 47 CFR Part 2.1053,
 FCC 47 CFR Part 22.917(a)(b),
 FCC 47 CFR Part 24.238(a)(b),
 FCC 47 CFR Part 27.53(h)(1)

Test Method: ANSI C63.26-2015 & KDB 971168 D01v03r01 Section 7

Limits:

The power of any emission outside of the authorized operating frequency ranges must be attenuated below the transmitting power (P) by a factor of at least $43 + 10 \log(P)$ dB. The emission limit equal to -13 dBm.

Test Setup: Refer to section 4.2.1 for details.

Test Procedures: KDB 971168 D01v03r01 Section 7

Equipment Used: Refer to section 3 for details.

Test Result: Pass

The measurement data as follows:

Below 1G

GSM 850							
No.	Frequency	SA Reading	Correction factor	EIRP Result	Limit	Margin	Ant. Pol.
	(MHz)	(dBm)	(dB/m)	(dBm)	(dBm)	(dB)	
Lowest Channel							
1	33.335	-91.15	37.32	-53.83	-13.00	-40.83	Horizontal
2	254.031	-88.64	36.47	-52.17	-13.00	-39.17	Horizontal
3	958.714	-87.09	52.01	-35.08	-13.00	-22.08	Horizontal
4	113.220	-88.51	31.86	-56.65	-13.00	-43.65	Vertical
5	478.139	-88.89	42.91	-45.98	-13.00	-32.98	Vertical
6	986.044	-87.14	51.52	-35.62	-13.00	-22.62	Vertical
Middle Channel							
1	31.073	-92.06	38.49	-53.57	-13.00	-40.57	Horizontal
2	516.565	-87.30	43.78	-43.52	-13.00	-30.52	Horizontal
3	958.714	-86.45	52.01	-34.44	-13.00	-21.44	Horizontal
4	31.292	-92.05	38.52	-53.53	-13.00	-40.53	Vertical
5	562.014	-88.61	44.93	-43.68	-13.00	-30.68	Vertical
6	992.997	-87.44	51.73	-35.71	-13.00	-22.71	Vertical
Middle Channel							
1	30.855	-91.11	38.61	-52.50	-13.00	-39.50	Horizontal
2	398.296	-89.04	41.46	-47.58	-13.00	-34.58	Horizontal
3	938.714	-86.46	51.31	-35.15	-13.00	-22.15	Horizontal
4	35.263	-90.24	35.96	-54.28	-13.00	-41.28	Vertical
5	481.511	-87.89	43.00	-44.89	-13.00	-31.89	Vertical
6	972.283	-87.11	51.10	-36.01	-13.00	-23.01	Vertical

PCS 1900							
No.	Frequency	SA Reading	Correction factor	EIRP Result	Limit	Margin	Ant. Pol.
	(MHz)	(dBm)	(dB/m)	(dBm)	(dBm)	(dB)	
Lowest Channel							
1	99.768	-89.48	32.08	-57.40	-13.00	-44.40	Horizontal
2	250.486	-88.69	36.40	-52.29	-13.00	-39.29	Horizontal
3	945.334	-86.33	51.71	-34.62	-13.00	-21.62	Horizontal
4	38.365	-89.91	33.95	-55.96	-13.00	-42.96	Vertical
5	353.447	-89.07	39.62	-49.45	-13.00	-36.45	Vertical
6	945.334	-86.12	50.38	-35.74	-13.00	-22.74	Vertical
Middle Channel							
1	156.426	-88.87	33.52	-55.35	-13.00	-42.35	Horizontal
2	398.296	-88.71	41.46	-47.25	-13.00	-34.25	Horizontal
3	965.474	-86.73	52.03	-34.70	-13.00	-21.70	Horizontal
4	31.735	-91.06	38.23	-52.83	-13.00	-39.83	Vertical
5	102.612	-89.30	32.07	-57.23	-13.00	-44.23	Vertical
6	979.139	-86.53	51.31	-35.22	-13.00	-22.22	Vertical
Highest Channel							
1	34.045	-90.90	36.96	-53.94	-13.00	-40.94	Horizontal
2	153.163	-88.98	33.21	-55.77	-13.00	-42.77	Horizontal
3	952.000	-87.07	51.99	-35.08	-13.00	-22.08	Horizontal
4	32.640	-91.21	37.64	-53.57	-13.00	-40.57	Vertical
5	703.731	-88.15	46.68	-41.47	-13.00	-28.47	Vertical
6	972.283	-87.15	51.10	-36.05	-13.00	-23.05	Vertical

Shenzhen UnionTrust Quality and Technology Co., Ltd.

Address: 16/F, Block A, Building 6, Baoneng Science and Technology Park, Qingxiang Road No.1, Longhua New District, Shenzhen, China

Tel: +86-755-28230888

Fax: +86-755-28230886

E-mail: info@uttlab.com

<http://www.uttlab.com>

UTTR-RF-FCC23G-V1.0

WCDMA Band II							
No.	Frequency	SA Reading	Correction factor	EIRP Result	Limit	Margin	Ant. Pol.
	(MHz)	(dBm)	(dB/m)	(dBm)	(dBm)	(dB)	
RMC 12.2kbps_ Lowest Channel							
1	30.212	-90.79	38.94	-51.85	-13.00	-38.85	Horizontal
2	674.677	-87.39	47.24	-40.15	-13.00	-27.15	Horizontal
3	945.334	-86.85	51.71	-35.14	-13.00	-22.14	Horizontal
4	31.735	-91.50	38.23	-53.27	-13.00	-40.27	Vertical
5	343.651	-88.55	39.21	-49.34	-13.00	-36.34	Vertical
6	932.141	-86.47	50.07	-36.40	-13.00	-23.40	Vertical
RMC 12.2kbps_ Middle Channel							
1	245.261	-89.20	36.13	-53.07	-13.00	-40.07	Horizontal
2	558.079	-88.69	44.24	-44.45	-13.00	-31.45	Horizontal
3	972.283	-86.78	52.07	-34.71	-13.00	-21.71	Horizontal
4	30.855	-90.79	38.80	-51.99	-13.00	-38.99	Vertical
5	723.793	-88.25	46.44	-41.81	-13.00	-28.81	Vertical
6	952.000	-86.87	50.54	-36.33	-13.00	-23.33	Vertical
RMC 12.2kbps_ Highest Channel							
1	101.893	-88.26	32.08	-56.18	-13.00	-43.18	Horizontal
2	620.117	-86.37	46.14	-40.23	-13.00	-27.23	Horizontal
3	992.997	-86.20	52.56	-33.64	-13.00	-20.64	Horizontal
4	182.578	-88.79	33.77	-55.02	-13.00	-42.02	Vertical
5	569.969	-88.66	45.13	-43.53	-13.00	-30.53	Vertical
6	986.044	-86.73	51.52	-35.21	-13.00	-22.21	Vertical

WCDMA Band IV							
No.	Frequency	SA Reading	Correction factor	EIRP Result	Limit	Margin	Ant. Pol.
	(MHz)	(dBm)	(dB/m)	(dBm)	(dBm)	(dB)	
RMC 12.2kbps_ Lowest Channel							
1	112.427	-89.30	31.89	-57.41	-13.00	-44.41	Horizontal
2	703.731	-87.80	47.73	-40.07	-13.00	-27.07	Horizontal
3	952.000	-86.64	51.99	-34.65	-13.00	-21.65	Horizontal
4	154.243	-87.31	33.01	-54.30	-13.00	-41.30	Vertical
5	655.977	-88.12	44.85	-43.27	-13.00	-30.27	Vertical
6	972.283	-86.91	51.10	-35.81	-13.00	-22.81	Vertical
RMC 12.2kbps_ Middle Channel							
1	101.180	-89.55	32.10	-57.45	-13.00	-44.45	Horizontal
2	684.226	-87.40	47.46	-39.94	-13.00	-26.94	Horizontal
3	958.714	-86.90	52.01	-34.89	-13.00	-21.89	Horizontal
4	156.426	-88.94	33.07	-55.87	-13.00	-42.87	Vertical
5	554.171	-88.53	44.73	-43.80	-13.00	-30.80	Vertical
6	952.000	-86.77	50.54	-36.23	-13.00	-23.23	Vertical
RMC 12.2kbps_ Highest Channel							
1	116.448	-87.24	31.79	-55.45	-13.00	-42.45	Horizontal
2	512.948	-88.36	43.58	-44.78	-13.00	-31.78	Horizontal
3	965.474	-87.35	52.03	-35.32	-13.00	-22.32	Horizontal
4	162.020	-88.40	33.14	-55.26	-13.00	-42.26	Vertical
5	527.571	-87.84	44.17	-43.67	-13.00	-30.67	Vertical
6	1000.000	-87.80	51.95	-35.85	-13.00	-22.85	Vertical

WCDMA Band V							
No.	Frequency	SA Reading	Correction factor	EIRP Result	Limit	Margin	Ant. Pol.
	(MHz)	(dBm)	(dB/m)	(dBm)	(dBm)	(dB)	
RMC 12.2kbps_ Lowest Channel							
1	30.855	-90.89	38.61	-52.28	-13.00	-39.28	Horizontal
2	523.876	-88.32	44.16	-44.16	-13.00	-31.16	Horizontal
3	958.714	-87.57	52.01	-35.56	-13.00	-22.56	Horizontal
4	33.101	-90.57	37.34	-53.23	-13.00	-40.23	Vertical
5	117.269	-84.39	31.76	-52.63	-13.00	-39.63	Vertical
6	965.474	-86.37	50.90	-35.47	-13.00	-22.47	Vertical
RMC 12.2kbps_ Middle Channel							
1	37.565	-89.99	35.15	-54.84	-13.00	-41.84	Horizontal
2	505.789	-88.71	43.20	-45.51	-13.00	-32.51	Horizontal
3	938.714	-85.89	51.31	-34.58	-13.00	-21.58	Horizontal
4	32.870	-91.31	37.49	-53.82	-13.00	-40.82	Vertical
5	116.448	-85.36	31.79	-53.57	-13.00	-40.57	Vertical
6	965.474	-86.87	50.90	-35.97	-13.00	-22.97	Vertical
RMC 12.2kbps_ Highest Channel							
1	33.570	-90.30	37.20	-53.10	-13.00	-40.10	Horizontal
2	116.448	-87.59	31.79	-55.80	-13.00	-42.80	Horizontal
3	979.139	-86.90	52.19	-34.71	-13.00	-21.71	Horizontal
4	32.184	-91.63	37.94	-53.69	-13.00	-40.69	Vertical
5	562.014	-88.48	44.93	-43.55	-13.00	-30.55	Vertical
6	965.474	-86.60	50.90	-35.70	-13.00	-22.70	Vertical

Above 1G

GSM 850							
No.	Frequency	SA Reading	Correction factor	EIRP Result	Limit	Margin	Ant. Pol.
	(MHz)	(dBm)	(dB/m)	(dBm)	(dBm)	(dB)	
Lowest Channel							
1	1648.400	-73.06	3.17	-69.89	-13.00	-56.89	Horizontal
2	2472.600	-73.81	11.44	-62.37	-13.00	-49.37	Horizontal
3	1648.400	-70.54	3.25	-67.29	-13.00	-54.29	Vertical
4	2472.600	-74.49	11.24	-63.25	-13.00	-50.25	Vertical
Middle Channel							
1	1673.200	-72.57	3.44	-69.13	-13.00	-56.13	Horizontal
2	2509.800	-75.15	11.46	-63.69	-13.00	-50.69	Horizontal
3	1673.200	-71.77	3.50	-68.27	-13.00	-55.27	Vertical
4	2509.800	-74.43	11.26	-63.17	-13.00	-50.17	Vertical
Highest Channel							
1	1697.600	-75.72	3.71	-72.01	-13.00	-59.01	Horizontal
2	2546.400	-77.44	11.46	-65.98	-13.00	-52.98	Horizontal
3	1697.600	-74.67	3.75	-70.92	-13.00	-57.92	Vertical
4	2546.400	-77.17	11.25	-65.92	-13.00	-52.92	Vertical

Shenzhen UnionTrust Quality and Technology Co., Ltd.

Address: 16/F, Block A, Building 6, Baoneng Science and Technology Park, Qingxiang Road No.1, Longhua New District, Shenzhen, China

Tel: +86-755-28230888

Fax: +86-755-28230886

E-mail: info@uttlab.com

<http://www.uttlab.com>

UTTR-RF-FCC23G-V1.0

PCS 1900							
No.	Frequency	SA Reading	Correction factor	EIRP Result	Limit	Margin	Ant. Pol.
	(MHz)	(dBm)	(dB/m)	(dBm)	(dBm)	(dB)	
Lowest Channel							
1	3700.400	-66.50	15.35	-51.15	-13.00	-38.15	Horizontal
2	5550.600	-68.98	17.05	-51.93	-13.00	-38.93	Horizontal
3	3700.400	-67.89	15.09	-52.80	-13.00	-39.80	Vertical
4	5550.600	-68.69	16.85	-51.84	-13.00	-38.84	Vertical
Middle Channel							
1	3760.000	-70.38	15.54	-54.84	-13.00	-41.84	Horizontal
2	5640.000	-69.38	17.18	-52.20	-13.00	-39.20	Horizontal
3	3760.000	-65.55	15.29	-50.26	-13.00	-37.26	Vertical
4	5640.000	-67.20	16.98	-50.22	-13.00	-37.22	Vertical
Highest Channel							
1	3819.600	-70.62	15.73	-54.89	-13.00	-41.89	Horizontal
2	5729.400	-70.19	17.51	-52.68	-13.00	-39.68	Horizontal
3	3819.600	-70.87	15.49	-55.38	-13.00	-42.38	Vertical
4	5729.400	-68.14	17.31	-50.83	-13.00	-37.83	Vertical

Shenzhen UnionTrust Quality and Technology Co., Ltd.

Address: 16/F, Block A, Building 6, Baoneng Science and Technology Park, Qingxiang Road No.1, Longhua New District, Shenzhen, China

Tel: +86-755-28230888

Fax: +86-755-28230886

E-mail: info@uttlab.com

<http://www.uttlab.com>

UTTR-RF-FCC23G-V1.0

WCDMA Band II							
No.	Frequency	SA Reading	Correction factor	EIRP Result	Limit	Margin	Ant. Pol.
	(MHz)	(dBm)	(dB/m)	(dBm)	(dBm)	(dB)	
RMC 12.2kbps_ Lowest Channel							
1	3704.800	-58.23	15.37	-42.86	-13.00	-29.86	Horizontal
2	5557.200	-66.83	17.05	-49.78	-13.00	-36.78	Horizontal
3	3704.800	-70.50	15.11	-55.39	-13.00	-42.39	Vertical
4	5557.200	-69.28	16.85	-52.43	-13.00	-39.43	Vertical
RMC 12.2kbps_ Middle Channel							
1	3760.000	-59.30	15.54	-43.76	-13.00	-30.76	Horizontal
2	5640.000	-70.98	17.18	-53.80	-13.00	-40.80	Horizontal
3	3760.000	-67.74	15.29	-52.45	-13.00	-39.45	Vertical
4	5640.000	-71.25	16.98	-54.27	-13.00	-41.27	Vertical
RMC 12.2kbps_ Highest Channel							
1	3815.200	-55.83	15.72	-40.11	-13.00	-27.11	Horizontal
2	5722.800	-66.64	17.48	-49.16	-13.00	-36.16	Horizontal
3	3815.200	-65.66	15.48	-50.18	-13.00	-37.18	Vertical
4	5722.800	-69.54	17.28	-52.26	-13.00	-39.26	Vertical

WCDMA Band IV							
No.	Frequency	SA Reading	Correction factor	EIRP Result	Limit	Margin	Ant. Pol.
	(MHz)	(dBm)	(dB/m)	(dBm)	(dBm)	(dB)	
RMC 12.2kbps_ Lowest Channel							
1	3424.800	-69.47	13.80	-55.67	-13.00	-42.67	Horizontal
2	5137.200	-69.42	16.37	-53.05	-13.00	-40.05	Horizontal
3	3424.800	-74.75	13.50	-61.25	-13.00	-48.25	Vertical
4	5137.200	-71.15	16.03	-55.12	-13.00	-42.12	Vertical
RMC 12.2kbps_ Middle Channel							
1	3464.800	-63.49	14.07	-49.42	-13.00	-36.42	Horizontal
2	5197.200	-70.53	16.60	-53.93	-13.00	-40.93	Horizontal
3	3464.800	-74.45	13.77	-60.68	-13.00	-47.68	Vertical
4	5197.200	-69.38	16.28	-53.10	-13.00	-40.10	Vertical
RMC 12.2kbps_ Highest Channel							
1	3505.200	-70.58	14.34	-56.24	-13.00	-43.24	Horizontal
2	5257.800	-67.79	16.72	-51.07	-13.00	-38.07	Horizontal
3	3505.200	-73.87	14.04	-59.83	-13.00	-46.83	Vertical
4	5257.800	-69.69	16.42	-53.27	-13.00	-40.27	Vertical

WCDMA Band V							
No.	Frequency	SA Reading	Correction factor	EIRP Result	Limit	Margin	Ant. Pol.
	(MHz)	(dBm)	(dB/m)	(dBm)	(dBm)	(dB)	
RMC 12.2kbps_ Lowest Channel							
1	1652.800	-72.19	3.22	-68.97	-13.00	-55.97	Horizontal
2	2479.200	-74.09	11.45	-62.64	-13.00	-49.64	Horizontal
3	1652.800	-72.27	3.30	-68.97	-13.00	-55.97	Vertical
4	2479.200	-74.58	11.25	-63.33	-13.00	-50.33	Vertical
RMC 12.2kbps_ Middle Channel							
1	1672.800	-74.69	3.44	-71.25	-13.00	-58.25	Horizontal
2	2509.200	-75.45	11.46	-63.99	-13.00	-50.99	Horizontal
3	1672.800	-72.98	3.50	-69.48	-13.00	-56.48	Vertical
4	2509.200	-76.61	11.26	-65.35	-13.00	-52.35	Vertical
RMC 12.2kbps_ Highest Channel							
1	1693.200	-73.48	3.66	-69.82	-13.00	-56.82	Horizontal
2	2539.800	-74.74	11.46	-63.28	-13.00	-50.28	Horizontal
3	1693.200	-73.04	3.71	-69.33	-13.00	-56.33	Vertical
4	2539.800	-75.25	11.25	-64.00	-13.00	-51.00	Vertical

Remark:

1. Correct Factor = Antenna Factor + Cable Loss - Amplifier Gain, the value was added to Original Receiver Reading by the software automatically.
2. Result = Reading + Correct Factor.
3. Margin = Result – Limit

5.9 FREQUENCY STABILITY

Test Requirement: FCC 47 CFR Part 2.1055 &
 FCC 47 CFR Part 22.355 &
 FCC 47 CFR Part 24.235 &
 FCC 47 CFR Part 27.54

Test Method: ANSI C63.26-2015 & KDB 971168 D01v03r01

Limits:

FCC 47 CFR Part 22.355,

The carrier frequency shall not depart from the reference frequency in excess of ± 2.5 ppm for mobile stations.

FCC 47 CFR Part 24.235, FCC 47 CFR Part 27.54

The frequency stability shall be sufficient to ensure that the fundamental emission stays within the authorized frequency block.

Test Setup: Refer to section 4.2.2 for details.

Test Procedures:

- 1) Use CMW 500 with Frequency Error measurement capability.
 - a) Temp. = -30° to $+50^{\circ}\text{C}$
 - b) Voltage = low voltage, 3.5 Vdc, Normal, 3.85 Vdc and High voltage, 4.4 Vdc.

2) Frequency Stability vs Temperature:

The EUT is placed inside a temperature chamber. The temperature is set to 20°C and allowed to stabilize. After sufficient soak time, the transmitting frequency error is measured. The temperature is increased by 10 degrees, allowed to stabilize and soak, and then the measurement is repeated. This is repeated until $+50^{\circ}\text{C}$ is reached.

3) Frequency Stability vs Voltage:

The peak frequency error is recorded (worst-case).

Equipment Used: Refer to section 3 for details.

Test Result: Pass

Modulation	Channel/ Frequency (MHz)	Voltage (Vdc)	Temperature ($^{\circ}\text{C}$)	Deviation (Hz)	Deviation (ppm)	Limit (ppm)	Result
GSM 850							
GPRS	190 / 836.6	VL	TN	31	0.0371	± 2.5	Pass
		VN		43	0.0514	± 2.5	Pass
		VH		31	0.0371	± 2.5	Pass
		VN	50	39	0.0466	± 2.5	Pass
			40	35	0.0418	± 2.5	Pass
			30	31	0.0371	± 2.5	Pass
			20	37	0.0442	± 2.5	Pass
			10	39	0.0466	± 2.5	Pass
			0	37	0.0442	± 2.5	Pass
			-10	38	0.0454	± 2.5	Pass
			-20	41	0.0490	± 2.5	Pass
			-30	32	0.0383	± 2.5	Pass

Modulation	Channel/ Frequency	Voltage	Temperature	Deviation	Deviation	Limit	Pass/ Fail
	(MHz)	(Vdc)	(°C)	(Hz)	(ppm)	(ppm)	
GSM 850							
EDGE	190 / 836.6	VL	TN	34	0.0406	± 2.5	Pass
		VN		33	0.0394	± 2.5	Pass
		VH		41	0.0490	± 2.5	Pass
		VN	50	34	0.0406	± 2.5	Pass
			40	37	0.0442	± 2.5	Pass
			30	35	0.0418	± 2.5	Pass
			20	41	0.0490	± 2.5	Pass
			10	37	0.0442	± 2.5	Pass
			0	39	0.0466	± 2.5	Pass
			-10	41	0.0490	± 2.5	Pass
			-20	35	0.0418	± 2.5	Pass
			-30	37	0.0442	± 2.5	Pass

Modulation	Channel/ Frequency	Voltage	Temperature	Deviation	Deviation	Limit	Result
	(MHz)	(Vdc)	(°C)	(Hz)	(ppm)	(ppm)	
PCS 1900							
GPRS	661 / 1880.0	VL	TN	33	0.0176	N/A	Pass
		VN		29	0.0154		Pass
		VH		28	0.0149		Pass
		VN	50	25	0.0133		Pass
			40	36	0.0191		Pass
			30	31	0.0165		Pass
			20	37	0.0197		Pass
			10	31	0.0165		Pass
			0	26	0.0138		Pass
			-10	31	0.0165		Pass
			-20	33	0.0176		Pass
			-30	28	0.0149		Pass

Modulation	Channel/ Frequency	Voltage	Temperature	Deviation	Deviation	Limit	Pass/ Fail
	(MHz)	(Vdc)	(°C)	(Hz)	(ppm)	(ppm)	
PCS 1900							
EDGE	661 / 1880.0	VL	TN	31	0.0165	N/A	Pass
		VN		33	0.0176		Pass
		VH		27	0.0144		Pass
		VN	50	36	0.0191		Pass
			40	31	0.0165		Pass
			30	33	0.0176		Pass
			20	38	0.0202		Pass
			10	29	0.0154		Pass
			0	37	0.0197		Pass
			-10	33	0.0176		Pass
			-20	36	0.0191		Pass
			-30	31	0.0165		Pass

Shenzhen UnionTrust Quality and Technology Co., Ltd.

Address: 16/F, Block A, Building 6, Baoneng Science and Technology Park, Qingxiang Road No.1, Longhua New District, Shenzhen, China

Tel: +86-755-28230888

Fax: +86-755-28230886

E-mail: info@uttlab.com

<http://www.uttlab.com>

UTTR-RF-FCC23G-V1.0

Modulation	Channel/ Frequency	Voltage	Temperature	Deviation	Deviation	Limit	Result
	(MHz)	(Vdc)	(°C)	(Hz)	(ppm)	(ppm)	
WCDMA Band II							
RMC 12.2kbps	9400 / 1880.0	VL	TN	28	0.0149	N/A	Pass
		VN		33	0.0176		Pass
		VH		31	0.0165		Pass
		VN	50	32	0.0170		Pass
			40	29	0.0154		Pass
			30	38	0.0202		Pass
			20	26	0.0138		Pass
			10	36	0.0191		Pass
			0	31	0.0165		Pass
			-10	33	0.0176		Pass
			-20	33	0.0176		Pass
			-30	29	0.0154		Pass

Modulation	Channel/ Frequency	Voltage	Temperature	Deviation	Deviation	Limit	Result
	(MHz)	(Vdc)	(°C)	(Hz)	(ppm)	(ppm)	
WCDMA Band IV							
RMC 12.2kbps	1412 / 1732.4	VL	TN	31	0.0179	N/A	Pass
		VN		35	0.0202		Pass
		VH		31	0.0179		Pass
		VN	50	35	0.0202		Pass
			40	29	0.0167		Pass
			30	38	0.0219		Pass
			20	37	0.0214		Pass
			10	36	0.0208		Pass
			0	35	0.0202		Pass
			-10	27	0.0156		Pass
			-20	33	0.0190		Pass
			-30	29	0.0167		Pass

Modulation	Channel/ Frequency (MHz)	Voltage	Temperature	Deviation	Deviation	Limit	Result
		(Vdc)	(°C)	(Hz)	(ppm)	(ppm)	
WCDMA Band V							
RMC 12.2kbps	4182 / 836.4	VL	TN	33	0.0395	± 2.5	Pass
		VN		31	0.0371	± 2.5	Pass
		VH		28	0.0335	± 2.5	Pass
		VN	50	34	0.0407	± 2.5	Pass
			40	31	0.0371	± 2.5	Pass
			30	29	0.0347	± 2.5	Pass
			20	34	0.0407	± 2.5	Pass
			10	28	0.0335	± 2.5	Pass
			0	29	0.0347	± 2.5	Pass
			-10	31	0.0371	± 2.5	Pass
			-20	26	0.0311	± 2.5	Pass
			-30	36	0.0430	± 2.5	Pass

APPENDIX 1 PHOTOS OF TEST SETUP

See test photos attached in Appendix 1 for the actual connections between Product and support equipment.

APPENDIX 2 PHOTOS OF EUT CONSTRUCTIONAL DETAILS

Refer to Appendix 2 for EUT external and internal photos.

*** End of Report ***

The test report is effective only with both signature and specialized stamp. The result(s) shown in this report refer only to the sample(s) tested. Without written approval of UnionTrust, this report can't be reproduced except in full.
