

FCC TEST REPORT

Product Name: Mobile Phone

Trade Mark: BLU

Model No.: G90

Report Number: 200102002RFM-1

Test Standards: FCC 47 CFR Part 22 Subpart H
FCC 47 CFR Part 24 Subpart E
FCC 47 CFR Part 27 Subpart L

FCC ID: YHLBLUG90

Test Result: PASS

Date of Issue: February 25, 2020

Prepared for:

BLU Products, Inc.
10814 NW 33rd St # 100 Doral, FL 33172 ,USA

Prepared by:

Shenzhen UnionTrust Quality and Technology Co., Ltd.
16/F, Block A, Building 6, Baoneng Science and Technology Park,
Qingxiang Road No.1, Longhua New District, Shenzhen, China
TEL: +86-755-2823 0888
FAX: +86-755-2823 0886

Prepared by: 
Henry Lu
Team Leader

Reviewed by: 
Kevin Liang
Assistant Manager

Approved by: 
Billy Li
Technical Director

Date: February 25, 2020

Shenzhen UnionTrust Quality and Technology Co., Ltd.

Version

Version No.	Date	Description
V1.0	February 25, 2020	Original

**Shenzhen UnionTrust Quality and Technology Co., Ltd.**

Address: 16/F, Block A, Building 6, Baoneng Science and Technology Park, Qingxiang Road No.1, Longhua New District, Shenzhen, China

Tel: +86-755-28230888

Fax: +86-755-28230886

E-mail: info@uttlab.com<http://www.uttlab.com>UTTR-RF-FCC23G-V1.0

CONTENTS

1. GENERAL INFORMATION	4
1.1 CLIENT INFORMATION	4
1.2 EUT INFORMATION	4
1.2.1 GENERAL DESCRIPTION OF EUT	4
1.2.2 DESCRIPTION OF ACCESSORIES	4
1.3 PRODUCT SPECIFICATION SUBJECTIVE TO THIS STANDARD	5
1.4 DESCRIPTION OF SUPPORT UNITS	6
1.5 TEST LOCATION	6
1.6 TEST FACILITY	6
1.7 DEVIATION FROM STANDARDS	6
1.8 ABNORMALITIES FROM STANDARD CONDITIONS	7
1.9 OTHER INFORMATION REQUESTED BY THE CUSTOMER	7
1.10 MEASUREMENT UNCERTAINTY	7
2. TEST SUMMARY	8
3. EQUIPMENT LIST	10
4. TEST CONFIGURATION	11
4.1 ENVIRONMENTAL CONDITIONS FOR TESTING	11
4.2 TEST SETUP	12
4.2.1 FOR RADIATED EMISSIONS TEST SETUP	12
4.2.2 FOR CONDUCTED RF TEST SETUP	13
4.3 TEST CHANNELS	14
4.4 SYSTEM TEST CONFIGURATION	15
4.5 PRE-SCAN	15
5. RADIO TECHNICAL REQUIREMENTS SPECIFICATION	18
5.1 REFERENCE DOCUMENTS FOR TESTING	18
5.2 MAXIMUM ERP/EIRP	18
5.3 CONDUCTED OUTPUT POWER	20
5.4 PEAK-TO-AVERAGE RATIO	21
5.5 99%&26dB BANDWIDTH	27
5.6 BAND EDGE AT ANTENNA TERMINALS	32
5.7 SPURIOUS EMISSIONS AT ANTENNA TERMINALS	36
5.8 FIELD STRENGTH OF SPURIOUS RADIATION	41
5.9 FREQUENCY STABILITY	49
APPENDIX 1 PHOTOS OF TEST SETUP	52
APPENDIX 2 PHOTOS OF EUT CONSTRUCTIONAL DETAILS	52

1. GENERAL INFORMATION

1.1 CLIENT INFORMATION

Applicant:	BLU Products, Inc.
Address of Applicant:	10814 NW 33rd St # 100 Doral, FL 33172 ,USA
Manufacturer:	BLU Products, Inc.
Address of Manufacturer:	10814 NW 33rd St # 100 Doral, FL 33172 ,USA

1.2 EUT INFORMATION

1.2.1 General Description of EUT

Product Name:	Mobile Phone	
Model No.:	G90	
Trade Mark:	BLU	
DUT Stage:	Identical Prototype	
EUT Supports Function:	GSM Bands:	GSM850/1900
	UTRA Bands:	Band II/ Band IV/ Band V
	E-UTRA Bands:	FDD Band 2/ Band 4/ Band 5/ Band 7/ Band 12/ Band 13/ Band 17
	2.4 GHz ISM Band:	IEEE 802.11b/g/n Bluetooth V4.2
Sample Received Date:	January 2, 2020	
Sample Tested Date:	January 2, 2020 to February 12, 2020	

1.2.2 Description of Accessories

Adapter	
Model No.:	US-WT-2000
Input:	100-240 V~50/60 Hz 0.3 A
Output:	5.0 V = 2.0 A
DC Cable:	1.20 Meter, Shielded without ferrite
Manufacturer:	Shenzhen Tianyin Electronics Co.,Ltd
Address of Manufacturer:	2-6 FL, Bldg 9, SanZhuli Industrial Park, Shuitian Community Shiyan Subdistrict, Bao'an District

Battery	
Model No.:	C876642400P
Battery Type:	Lithium-ion Rechargeable Battery
Rated Voltage:	3.85 Vdc
Limited Charge Voltage:	4.4 Vdc
Rated Capacity:	3930 mAh
Manufacturer:	BRICH ELECTRONIC.
Address of Manufacturer:	No.18, haibin road, No.6 Industrial Zone,Wusha chang'an Town,dongguan city, guangdong Province, China

Cable	
Description:	USB Type-C Plug Cable
Cable Type:	Shielded without ferrite
Length:	1.20 Meter

Shenzhen UnionTrust Quality and Technology Co., Ltd.

Address: 16/F, Block A, Building 6, Baoneng Science and Technology Park, Qingxiang Road No.1, Longhua New District, Shenzhen, China

Tel: +86-755-28230888

Fax: +86-755-28230886

E-mail: info@uttlab.com

<http://www.uttlab.com>

UTTR-RF-FCC23G-V1.0

Earphone	
Cable Type:	Unshielded
Length:	1.50 Meter

1.3 PRODUCT SPECIFICATION SUBJECTIVE TO THIS STANDARD

Support Networks:	GSM, GPRS, EDGE, WCDMA, HSDPA, HSUPA,	
Type of Modulation:	GSM/GPRS:	GMSK
	EDGE:	GMSK, 8PSK
	WCDMA	BPSK
	HSDPA/DC-HSDPA:	QPSK
	HSUPA:	QPSK
Frequency Range:	GSM/GPRS/EDGE 850:	824.2-848.8 MHz
	GSM/GPRS/EDGE 1900:	1850.2-1909.8 MHz
	WCDMA Band II:	1852.4-1907.6 MHz
	WCDMA Band IV:	1712.4-1752.6 MHz
	WCDMA Band V:	826.4-846.6 MHz
Max RF Output Power:	GSM/GPRS 850:	32.67dBm
	EDGE 850:	26.25dBm
	GSM/GPRS 1900:	30.90dBm
	EDGE 1900:	27.04dBm
	WCDMA Band II:	24.51dBm
	WCDMA Band IV:	24.59dBm
	WCDMA Band V:	22.98dBm
Emission Designator:	GSM/GPRS 850:	248KGXW
	EDGE 850:	247KG7W
	GSM/GPRS 1900:	247KGXW
	EDGE 1900:	245KG7W
	WCDMA Band II:	4M20F9W
	WCDMA Band IV:	4M19F9W
	WCDMA Band V:	4M19F9W
IEMI:	Radiation: 863653035423971, 863653035423989	
	Conducted: 863653037353093, 863653037353101	
Antenna Type:	PIFA Antenna	
Antenna Gain:	GSM 850:	-0.8 dBi
	PCS 1900:	0.8 dBi
	WCDMA Band II:	0.8 dBi
	WCDMA Band IV:	0.8 dBi
	WCDMA Band V:	-0.8 dBi
GPRS/EDGE Class:	Class 12	
Normal Test Voltage:	3.85 Vdc	
Extreme Test Voltage:	3.5 to 4.4Vdc	
Extreme Test Temperature:	-30 °C to +50 °C	

Shenzhen UnionTrust Quality and Technology Co., Ltd.

Address: 16/F, Block A, Building 6, Baoneng Science and Technology Park, Qingxiang Road No.1, Longhua New District, Shenzhen, China

Tel: +86-755-28230888

Fax: +86-755-28230886

E-mail: info@uttlab.com

<http://www.uttlab.com>

UTTR-RF-FCC23G-V1.0

1.4 DESCRIPTION OF SUPPORT UNITS

The EUT has been tested with associated equipment below.

1) Support Cable

Cable No.	Description	Connector	Length	Supplied by
1	Antenna Cable	SMA	0.30 Meter	UnionTrust

1.5 TEST LOCATION

Shenzhen UnionTrust Quality and Technology Co., Ltd.

Address: 16/F, Block A, Building 6, Baoneng Science and Technology Park, Qingxiang Road No.1, Longhua New District, Shenzhen, China 518109
 Telephone: +86 (0) 755 2823 0888
 Fax: +86 (0) 755 2823 0886

1.6 TEST FACILITY

The test facility is recognized, certified, or accredited by the following organizations:

CNAS-Lab Code: L9069

The measuring equipment utilized to perform the tests documented in this report has been calibrated once a year or in accordance with the manufacturer's recommendations, and is traceable under the ISO/IEC/EN 17025 to international or national standards. Equipment has been calibrated by accredited calibration laboratories.

A2LA-Lab Certificate No.: 4312.01

Shenzhen UnionTrust Quality and Technology Co., Ltd. has been accredited by A2LA for technical competence in the field of electrical testing, and proved to be in compliance with ISO/IEC 17025: 2005 General Requirements for the Competence of Testing and Calibration Laboratories and any additional program requirements in the identified field of testing.

ISED Wireless Device Testing Laboratories

CAB identifier: CN0032

FCC Accredited Lab.

Designation Number: CN1194
 Test Firm Registration Number: 259480

1.7 DEVIATION FROM STANDARDS

None.

1.8 ABNORMALITIES FROM STANDARD CONDITIONS

None.

1.9 OTHER INFORMATION REQUESTED BY THE CUSTOMER

None.

1.10 MEASUREMENT UNCERTAINTY

Where relevant, the following measurement uncertainty levels have been estimated for tests performed on the Product as specified in CISPR 16-4-2. This uncertainty represents an expanded uncertainty expressed at approximately the 95% confidence level using a coverage factor of k=2.

No.	Item	Measurement Uncertainty
1	Conducted emission 9KHz-150KHz	±3.8 dB
2	Conducted emission 150KHz-30MHz	±3.4 dB
3	Radiated emission 9KHz-30MHz	±4.9 dB
4	Radiated emission 30MHz-1GHz	±4.7 dB
5	Radiated emission 1GHz-18GHz	±5.1 dB
6	Radiated emission 18GHz-26GHz	±5.2 dB
7	Radiated emission 26GHz-40GHz	±5.2 dB

2. TEST SUMMARY

FCC 47 CFR Part 22 Subpart H Test Cases			
Test Item	Test Requirement	Test Method	Result
Effective Radiated Power (ERP)	FCC 47 CFR Part 2.1046(a) & FCC 47 CFR Part 22.913(a)	ANSI C63.26-2015 & KDB 971168 D01v03r01	PASS
Conducted Output Power	FCC 47 CFR Part 2.1046(a) & FCC 47 CFR Part 22.913(a)	ANSI C63.26-2015 & KDB 971168 D01v03r01	PASS
Peak-to-average ratio	FCC 47 CFR Part 22.913(a)	ANSI C63.26-2015 & KDB 971168 D01v03r01	PASS
99%&26dB Bandwidth	FCC 47 CFR Part 2.1049(h)	ANSI C63.26-2015 & KDB 971168 D01v03r01	PASS
Band Edge at antenna terminals	FCC 47 CFR Part 2.1051 & FCC 47 CFR Part 22.917(a)	ANSI C63.26-2015 & KDB 971168 D01v03r01	PASS
Spurious emissions at antenna terminals	FCC 47 CFR Part 2.1051 & FCC 47 CFR Part 22.917(a)(b)	ANSI C63.26-2015 & KDB 971168 D01v03r01	PASS
Field strength of spurious radiation	FCC 47 CFR Part 2.1053 & FCC 47 CFR Part 22.917(a)(b)	ANSI C63.26-2015 & KDB 971168 D01v03r01	PASS
Frequency stability	FCC 47 CFR Part 2.1055 & FCC 47 CFR Part 22.355	ANSI C63.26-2015 & KDB 971168 D01v03r01	PASS

FCC 47 CFR Part 24 Subpart E Test Cases			
Test Item	Test Requirement	Test Method	Result
Equivalent Isotropic Radiated Power (EIRP)	FCC 47 CFR Part 2.1046(a) & FCC 47 CFR Part 24.232(c)	ANSI C63.26-2015 & KDB 971168 D01v03r01	PASS
Conducted Output Power	FCC 47 CFR Part 2.1046(a) & FCC 47 CFR Part 24.232(c)	ANSI C63.26-2015 & KDB 971168 D01v03r01	PASS
Peak-to-average ratio	FCC 47 CFR Part 24.232(d)	KDB 971168 D01v03r01	PASS
99%&26dB Bandwidth	FCC 47 CFR Part 2.1049(h) & FCC 47 CFR Part 24.238(b)	ANSI C63.26-2015 & KDB 971168 D01v03r01	PASS
Band Edge at antenna terminals	FCC 47 CFR Part 2.1051 & FCC 47 CFR Part 24.238(a)	ANSI C63.26-2015 & KDB 971168 D01v03r01	PASS
Spurious emissions at antenna terminals	FCC 47 CFR Part 2.1051 & FCC 47 CFR Part 24.238(a)(b)	ANSI C63.26-2015 & KDB 971168 D01v03r01	PASS
Field strength of spurious radiation	FCC 47 CFR Part 2.1053 & FCC 47 CFR Part 24.238(a)(b)	ANSI C63.26-2015 & KDB 971168 D01v03r01	PASS
Frequency stability	FCC 47 CFR Part 2.1055 & FCC 47 CFR Part 24.235	ANSI C63.26-2015 & KDB 971168 D01v03r01	PASS

FCC 47 CFR Part 27 Subpart L Test Cases			
Test Item	Test Requirement	Test Method	Result
Equivalent Isotropic Radiated Power (EIRP)	FCC 47 CFR Part 2.1046(a) & FCC 47 CFR Part 27.50(d)(4)	ANSI C63.26-2015 & KDB 971168 D01v03r01	PASS
Conducted Output Power	FCC 47 CFR Part 2.1046(a) & FCC 47 CFR Part 27.50(d)(4)	ANSI C63.26-2015 & KDB 971168 D01v03r01	PASS
Peak-to-average ratio	FCC 47 CFR Part 27.50(d)(5)	KDB 971168 D01v03r01	PASS
99%&26dB Bandwidth	FCC 47 CFR Part 2.1049(h) & FCC 47 CFR Part 27.53(h)	ANSI C63.26-2015 & KDB 971168 D01v03r01	PASS
Band Edge at antenna terminals	FCC 47 CFR Part 27.53(h)(1)	ANSI C63.26-2015 & KDB 971168 D01v03r01	PASS
Spurious emissions at antenna terminals	FCC 47 CFR Part 2.1051 & FCC 47 CFR Part 27.53(h)	ANSI C63.26-2015 & KDB 971168 D01v03r01	PASS
Field strength of spurious radiation	FCC 47 CFR Part 2.1053 & FCC 47 CFR Part 27.53(h)	ANSI C63.26-2015 & KDB 971168 D01v03r01	PASS
Frequency stability	FCC 47 CFR Part 2.1055 & FCC 47 CFR Part 27.54	ANSI C63.26-2015 & KDB 971168 D01v03r01	PASS

Shenzhen UnionTrust Quality and Technology Co., Ltd.

Address: 16/F, Block A, Building 6, Baoneng Science and Technology Park, Qingxiang Road No.1, Longhua New District, Shenzhen, China

Tel: +86-755-28230888

Fax: +86-755-28230886

E-mail: info@uttlab.com

<http://www.uttlab.com>

UTTR-RF-FCC23G-V1.0

3. EQUIPMENT LIST

Radiated Emission Test Equipment List						
Used	Equipment	Manufacturer	Model No.	Serial Number	Cal. date (mm dd, yyyy)	Cal. Due date (mm dd, yyyy)
<input checked="" type="checkbox"/>	3M Chamber & Accessory Equipment	ETS-LINDGREN	3M	N/A	Dec. 03, 2018	Dec. 03, 2021
<input checked="" type="checkbox"/>	Receiver	R&S	ESIB26	100114	Nov. 24, 2019	Nov. 23, 2020
<input type="checkbox"/>	Loop Antenna	ETS-LINDGREN	6502	00202525	Nov. 16, 2019	Nov. 15, 2020
<input checked="" type="checkbox"/>	Broadband Antenna	ETS-LINDGREN	3142E	00201566	Nov. 16, 2019	Nov. 15, 2020
<input checked="" type="checkbox"/>	6dB Attenuator	Talent	RA6A5-N-18	18103001	Nov. 16, 2019	Nov. 15, 2020
<input checked="" type="checkbox"/>	Preamplifier	HP	8447F	2805A02960	Nov. 24, 2019	Nov. 23, 2020
<input type="checkbox"/>	Broadband Antenna (Pre-amplifier)	ETS-LINDGREN	3142E-PA	00201891	May 18, 2019	May 18, 2020
<input type="checkbox"/>	6dB Attenuator	Talent	RA6A5-N-18	18103002	Nov. 24, 2019	Nov. 23, 2020
<input type="checkbox"/>	Horn Antenna	ETS-LINDGREN	3117	00164202	Nov. 16, 2019	Nov. 15, 2020
<input checked="" type="checkbox"/>	Horn Antenna (Pre-amplifier)	ETS-LINDGREN	3117-PA	00201874	May 18, 2019	May 18, 2020
<input type="checkbox"/>	Horn Antenna	ETS-LINDGREN	3116C	00200180	Jun. 23, 2019	Jun. 23, 2020
<input checked="" type="checkbox"/>	Horn Antenna (Pre-amplifier)	ETS-LINDGREN	3116C-PA	00202652	Nov. 16, 2019	Nov. 15, 2020
<input checked="" type="checkbox"/>	Multi device Controller	ETS-LINDGREN	7006-001	00160105	N/A	N/A
<input checked="" type="checkbox"/>	Test Software	Audix	e3	Software Version: 9.160323		

RF Test Equipment List						
Used	Equipment	Manufacturer	Model No.	Serial Number	Cal. date (mm dd, yyyy)	Cal. Due date (mm dd, yyyy)
<input checked="" type="checkbox"/>	Receiver	R&S	ESR7	1316.3003K07-101181-K3	Nov. 24, 2019	Nov. 23, 2020
<input checked="" type="checkbox"/>	EXA Spectrum Analyzer	KEYSIGHT	N9010A	MY51440197	Nov. 24, 2019	Nov. 23, 2020
<input checked="" type="checkbox"/>	Wideband Radio Communication Tester	R&S	CMW500	120932	Jul. 19, 2019	Jul. 19, 2020
<input type="checkbox"/>	Wideband Radio Communication Tester	R&S	CMW500	119583	Jul. 31, 2019	Jul. 31, 2020
<input checked="" type="checkbox"/>	DC Source	KIKUSUI	PWR400L	LK003024	Sep. 09, 2019	Sep. 08, 2020
<input type="checkbox"/>	Temp & Humidity chamber	Espec	GL(U)04K A(W)	16921H201P3	Jul. 19, 2019	Jul. 19, 2020
<input checked="" type="checkbox"/>	Temp & Humidity chamber	Votisch	VT4002	58566133290020	Jun. 05, 2018	Jun. 05, 2020

Shenzhen UnionTrust Quality and Technology Co., Ltd.

Address: 16/F, Block A, Building 6, Baoneng Science and Technology Park, Qingxiang Road No.1, Longhua New District, Shenzhen, China

Tel: +86-755-28230888

Fax: +86-755-28230886

E-mail: info@uttlab.com

<http://www.uttlab.com>

UTTR-RF-FCC23G-V1.0

4. TEST CONFIGURATION

4.1 ENVIRONMENTAL CONDITIONS FOR TESTING

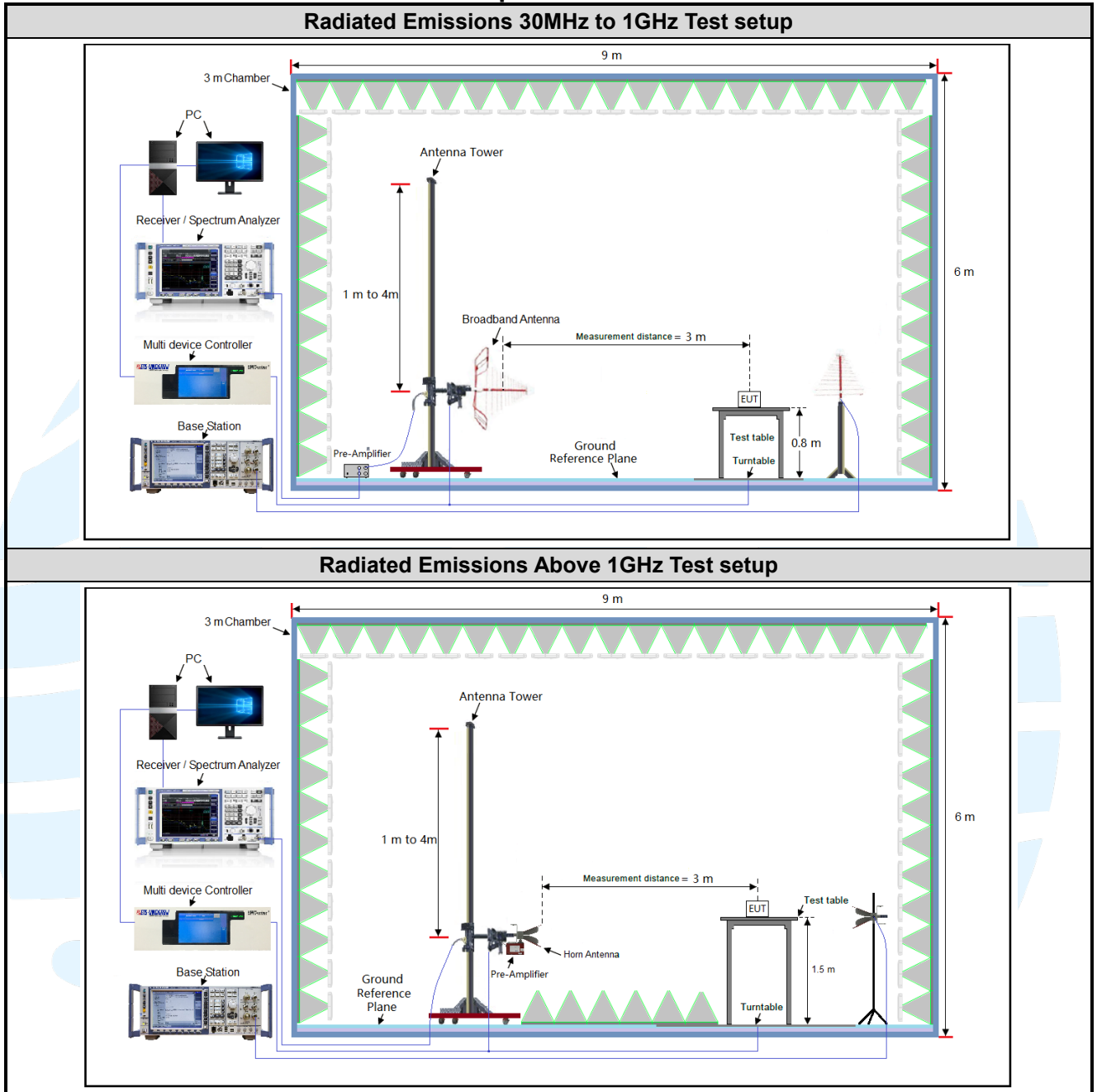
Test Environment	Selected Values During Tests		
Test Condition	Ambient		
	Temperature (°C)	Voltage (V)	Relative Humidity (%)
TN/VN	+15 to +35	3.85	20 to 75
TL/VL	-30	3.5	20 to 75
TH/VL	+50	3.5	20 to 75
TL/VH	-30	4.4	20 to 75
TH/VH	+50	4.4	20 to 75

Remark:

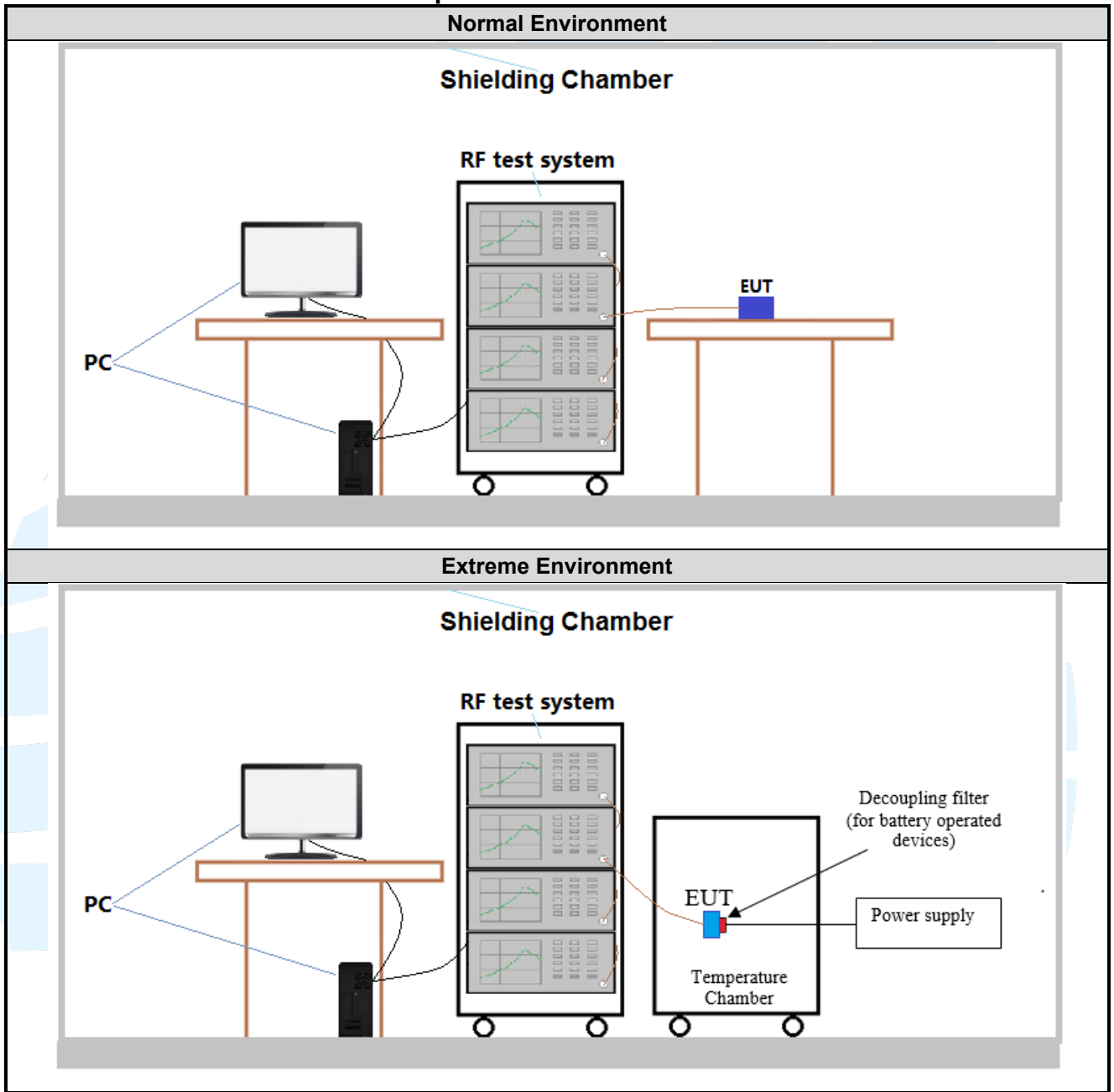
- 1) The EUT just work in such extreme temperature of -30 °C to +50 °C and the extreme voltage of 3.5 V to 4.4 V, so here the EUT is tested in the temperature of -30 °C to +50 °C and the voltage of 3.5 V to 4.4 V.
- 2) VN: Normal Voltage; TN: Normal Temperature;
 TL: Low Extreme Test Temperature; TH: High Extreme Test Temperature;
 VL: Low Extreme Test Voltage; VH: High Extreme Test Voltage.

4.2 TEST SETUP

4.2.1 For Radiated Emissions test setup



4.2.2 For Conducted RF test setup



4.3 TEST CHANNELS

Bands	Tx/Rx Frequency	RF Channel		
		Low(L)	Middle(M)	High(H)
GSM/GPRS/ EDGE850	Tx (824 MHz ~ 849 MHz)	Channel 128	Channel 190	Channel 251
		824.2 MHz	836.6 MHz	848.8 MHz
WCDMA band V	Tx (824 MHz ~ 849 MHz)	Channel 4132	Channel 4182	Channel 4233
		826.4 MHz	836.4 MHz	846.6 MHz

Bands	Tx/Rx Frequency	RF Channel		
		Low(L)	Middle(M)	High(H)
GSM/GPRS/ EDGE1900	Tx (1850 MHz-1910 MHz)	Channel 512	Channel 661	Channel 810
		1850.2 MHz	1880.0 MHz	1909.8 MHz
WCDMA Band II	Tx (1850 MHz-1910 MHz)	Channel 9262	Channel 9400	Channel 9538
		1852.4 MHz	1880.0 MHz	1907.6 MHz

Bands	Tx/Rx Frequency	RF Channel		
		Low(L)	Middle(M)	High(H)
WCDMA Band IV	Tx (1710 MHz-1755 MHz)	Channel 1312	Channel 1412	Channel 1513
		1712.4 MHz	1732.4 MHz	1752.6 MHz

4.4 SYSTEM TEST CONFIGURATION

For emissions testing, the equipment under test (EUT) setup to transmit continuously to simplify the measurement methodology. Care was taken to ensure proper power supply voltages during testing. During testing, radiated emission were performed with the EUT set to transmit at the channel with highest output power as worst-case scenario. It was powered by a 3.85Vdc rechargeable Li-on battery. Only the worst case data were recorded in this test report.

Pre-Scan has been conducted to determine the worst-case mode from all possible combinations between available modulations, data rates, X/Y/Z axis, and antenna ports. The worst case was found when positioned as the table below.

Bands	Mode	Antenna Port	Worst-case axis positioning
GSM 850	1TX	Chain 0	Y axis
PCS 1900	1TX	Chain 0	Y axis
WCDMA Band II	1TX	Chain 0	Y axis
WCDMA Band IV	1TX	Chain 0	Y axis
WCDMA Band V	1TX	Chain 0	Y axis

All readings are extrapolated back to the equivalent three meter reading using inverse scaling with distance. Analyzer resolution is 100 kHz or greater for frequencies below 1000MHz. The resolution is 1 MHz or greater for frequencies above 1000MHz. The spurious emissions more than 20 dB below the permissible value are not reported.

Radiated emission measurement were performed from the lowest radio frequency signal generated in the device which is greater than 9 kHz to the tenth harmonic of the highest fundamental frequency or to 40 GHz, whichever is lower.

4.5 PRE-SCAN

Pre-scan under all rate at lowest middle and highest channel, find the transmitter power as below:
SIM 1 Card Conducted transmitter power measurement result.

GSM 850 Maximum Average Power (dBm)			
Channel	128	190	251
Frequency(MHz)	824.2 MHz	836.6 MHz	848.8 MHz
GSM (GMSK, 1Tx-slot)	33.41	33.46	33.47
GPRS (GMSK, 1Tx-slot)	33.32	33.43	33.45
GPRS (GMSK, 2Tx-slot)	32.29	32.33	32.32
GPRS (GMSK, 3Tx-slot)	30.24	30.28	30.28
GPRS (GMSK, 4Tx-slot)	29.11	29.16	29.17
EDGE (8PSK, 1Tx-slot)	27.05	27.02	26.91
EDGE (8PSK, 2Tx-slot)	25.84	25.74	25.82
EDGE (8PSK, 3Tx-slot)	23.66	23.64	23.73
EDGE (8PSK, 4Tx-slot)	22.54	22.43	22.38

PCS 1900 Maximum Average Power (dBm)			
Channel	512	661	810
Frequency(MHz)	1850.2 MHz	1880.0 MHz	1909.8 MHz
GSM (GMSK, 1Tx-slot)	30.10	30.00	29.90
GPRS (GMSK, 1Tx-slot)	30.07	30.03	29.95
GPRS (GMSK, 2Tx-slot)	29.11	29.02	28.92
GPRS (GMSK, 3Tx-slot)	27.05	26.97	26.91
GPRS (GMSK, 4Tx-slot)	25.97	25.93	25.85
EDGE (8PSK, 1Tx-slot)	26.24	26.18	26.23
EDGE (8PSK, 2Tx-slot)	25.09	25.24	25.26
EDGE (8PSK, 3Tx-slot)	23.19	23.23	23.26
EDGE (8PSK, 4Tx-slot)	22.46	22.58	22.62

WCDMA Band II Maximum Average Power (dBm)			
Channel	9262	9400	9538
Frequency(MHz)	1852.4 MHz	1880.0 MHz	1907.6 MHz
RMC 12.2kbps	23.61	23.69	23.71
HSDPA Subtest-1	22.71	22.77	22.72
HSDPA Subtest-2	22.83	22.91	22.92
HSDPA Subtest-3	22.19	22.29	22.24
HSDPA Subtest-4	22.08	22.15	22.12
HSUPA Subtest-1	20.69	20.71	20.67
HSUPA Subtest-2	20.67	20.72	20.63
HSUPA Subtest-3	21.65	21.59	21.64
HSUPA Subtest-4	20.35	20.24	20.22
HSUPA Subtest-5	22.10	22.12	22.15

WCDMA Band IV Maximum Average Power (dBm)			
Channel	1312	1412	1513
Frequency(MHz)	1712.4 MHz	1732.4 MHz	1752.6 MHz
RMC 12.2kbps	23.42	23.44	23.79
HSDPA Subtest-1	22.51	22.59	22.65
HSDPA Subtest-2	22.46	22.56	22.59
HSDPA Subtest-3	21.92	22.13	22.12
HSDPA Subtest-4	21.94	21.89	22.07
HSUPA Subtest-1	20.44	20.53	20.57
HSUPA Subtest-2	20.46	20.61	20.66
HSUPA Subtest-3	21.54	21.53	21.64
HSUPA Subtest-4	20.11	20.15	20.16
HSUPA Subtest-5	21.97	21.96	22.05

WCDMA Band V Maximum Average Power (dBm)			
Channel	4132	4182	4233
Frequency(MHz)	826.4 MHz	836.4 MHz	846.6 MHz
RMC 12.2kbps	23.78	23.69	23.76
HSDPA Subtest-1	22.88	22.85	22.89
HSDPA Subtest-2	22.89	22.81	22.88
HSDPA Subtest-3	22.38	22.27	22.22
HSDPA Subtest-4	22.33	22.29	22.34
HSUPA Subtest-1	20.79	20.73	20.79
HSUPA Subtest-2	20.79	20.75	20.74
HSUPA Subtest-3	21.85	21.84	21.81
HSUPA Subtest-4	20.41	20.22	20.38
HSUPA Subtest-5	22.29	22.25	22.38

Pre-scan all bandwidth and RB, find worse case mode are chosen to the report, the worse mode applicability and tested channel detail as below:

Band	Radiated	Conducted
GSM/GPRS/EDGE 850/1900	1) GSM (GMSK, 1Tx-slot) Link 2) GPRS (GMSK, 1Tx-slot) Link 3) EDGE (8PSK, 1Tx-slot) Link	1) GSM (GMSK, 1Tx-slot) Link 2) GPRS (GMSK, 1Tx-slot) Link 3) EDGE (8PSK, 1Tx-slot) Link
WCDMA Band II/IVV	RMC 12.2kbps Link	RMC 12.2kbps Link

5. RADIO TECHNICAL REQUIREMENTS SPECIFICATION

5.1 REFERENCE DOCUMENTS FOR TESTING

No.	Identity	Document Title
1	FCC 47 CFR Part 2	Frequency allocations and radio treaty matters; general rules and regulations
2	FCC 47 CFR Part 22	Public Mobile Services
3	FCC 47 CFR Part 27	Miscellaneous Wireless Communications Services
4	FCC 47 CFR Part 24	Personal Communications Services
5	ANSI C63.26-2015	American National Standard for Compliance Testing of Transmitters Used in Licensed Radio Services
6	KDB 971168 D01	KDB 971168 D01 Power Meas License Digital Systems v03r01

5.2 MAXIMUM ERP/EIRP

Test Requirement: FCC 47 CFR Part 2.1046(a),
 FCC 47 CFR Part 22.913(a),
 FCC 47 CFR Part 24.232(c),
 FCC 47 CFR Part 27.50(d)(4)

Test Method: KDB 971168 D01v03r01 Section 5.6 & ANSI C63.26-2015

Limit:

FCC 47 CFR Part 22.913(a)

The ERP of mobile transmitters and auxiliary test transmitters must not exceed 7 Watts.

FCC 47 CFR Part 24.232(c)

Mobile and portable stations are limited to 2 watts EIRP.

FCC 47 CFR Part 27.50(d)(4)

Fixed, mobile, and portable (hand-held) stations operating in the 1710-1755 MHz band and mobile and portable stations operating in the 1695-1710 MHz and 1755-1780 MHz bands are limited to 1 watt EIRP.

Test Procedure:

$$ERP \text{ or } EIRP = P_{Meas} + G_T - L_C$$

where:

ERP or EIRP = effective radiated power or equivalent isotropically radiated power, respectively (expressed in the same units as P_{Meas}, typically dBW or dBm);

P_{Meas} = measured transmitter output power or PSD, in dBm or dBW;

G_T = gain of the transmitting antenna, in dBd (ERP) or dBi (EIRP);

L_C = signal attenuation in the connecting cable between the transmitter and antenna, in dB.

Test Setup: Refer to section 4.2.1 for details.

Instruments Used: Refer to section 3 for details

Test Mode: Link mode

Test Results: Pass

Test Data: See table below

Bands	Modulation	Max. Conducted Avg. Power	Ant. Gain	Limit	ERP		Result
		(dBm)	(dBi)	(W)	(dBm)	(W)	
GSM 850 (824-849 MHz)	GSM	33.47	-0.80	7.0	32.67	1.849269	Pass
	EDGE	27.05	-0.80		26.25	0.421697	Pass
WCDMA Band V (824-849 MHz)	RMC 12.2kbps	23.78	-0.80	7.0	22.98	0.198609	Pass
	HSUPA	22.89	-0.80		22.09	0.161808	Pass
	HSDPA	22.38	-0.80		21.58	0.143880	Pass

Bands	Modulation	Max. Conducted Avg. Power	Ant. Gain	Limit	EIRP		Result
		(dBm)	(dBi)	(W)	(dBm)	(W)	
PCS 1900 (1850-1910 MHz)	GSM	30.10	0.80	2.0	30.90	1.230269	Pass
	EDGE	26.24	0.80		27.04	0.505825	Pass
WCDMA Band II (1850-1910 MHz)	RMC 12.2kbps	23.71	0.80	2.0	24.51	0.282488	Pass
	HSUPA	22.92	0.80		23.72	0.235505	Pass
	HSDPA	22.15	0.80		22.95	0.197242	Pass
WCDMA Band IV (1710-1755 MHz)	RMC 12.2kbps	23.79	0.80	1.0	24.59	0.287740	Pass
	HSUPA	22.65	0.80		23.45	0.221309	Pass
	HSDPA	22.05	0.80		22.85	0.192752	Pass

Shenzhen UnionTrust Quality and Technology Co., Ltd.

Address: 16/F, Block A, Building 6, Baoneng Science and Technology Park, Qingxiang Road No.1, Longhua New District, Shenzhen, China

Tel: +86-755-28230888

Fax: +86-755-28230886

E-mail: info@uttlab.com

<http://www.uttlab.com>

UTTR-RF-FCC23G-V1.0

5.3 CONDUCTED OUTPUT POWER

Test Requirement: FCC 47 CFR Part 2.1046(a),
 FCC 47 CFR Part 22.913(a),
 FCC 47 CFR Part 24.232(c),
 FCC 47 CFR Part 27.50(d)(4)

Test Method: KDB 971168 D01v03r01 & ANSI C63.26-2015

Limit:

FCC 47 CFR Part 22.913(a)

The ERP of mobile transmitters and auxiliary test transmitters must not exceed 7 Watts.

FCC 47 CFR Part 24.232(c)

Mobile and portable stations are limited to 2 watts EIRP.

FCC 47 CFR Part 27.50(d)(4)

Fixed, mobile, and portable (hand-held) stations operating in the 1710-1755 MHz band and mobile and portable stations operating in the 1695-1710 MHz and 1755-1780 MHz bands are limited to 1 watt EIRP.

Test Procedure:

The EUT was set up for the maximum power with GSM, GPRS, EDGE, WCDMA, CDMA2000, and LTE link data modulation and link up with simulator. Set the EUT to transmit under low, middle and high channel and record the power level shown on simulator.

Note: The cable loss and attenuator loss were offset into measure device as an amplitude offset.

Test Setup: Refer to section 4.2.2 for details.

Instruments Used: Refer to section 3 for details

Test Mode: Link mode

Test Results: Pass

Test Data: The full result refer to section 4.5 for details.

5.4 PEAK-TO-AVERAGE RATIO

Test Requirement: FCC 47 CFR Part 22.913(a),
 FCC 47 CFR Part 24.232(c),
 FCC 47 CFR Part 27.50(d)(5)

Test Method: KDB 971168 D01v03r01 Section 5.7

Limit: In measuring transmissions in this band using an average power technique, the peak-to-average ratio (PAR) of the transmission may not exceed 13 dB

Test Procedure:

The EUT was connected to Spectrum Analyzer and Base Station via power divider. The RF output of EUT was connected to the spectrum analyzer by RF cable and attenuator. The path loss was compensated to the results for each measurement.

Some regulatory requirements specify a PAPR limit when the output power limits are specified in terms of average power. If it becomes necessary to provide measurement data to demonstrate compliance to a PAPR limit, then the appropriate procedure from those provided in 5.2.3 shall be utilized to determine the peak power (or peak PSD) and the appropriate procedure from those provided in 5.2.4 shall be used to determine the average power (or average PSD). The data from these measurements is then used in Equation (2) to determine the PAPR of a narrowband CW-like signal. See 5.2.3.4 for guidance on determining the PAPR of a broadband noise-like signal.

$$PAPR (dB) = PPK (dBm \text{ or } dBW) - PAvg (dBm \text{ or } dBW)$$

where:

- PAPR peak-to-average power ratio, in dB;
- PPk measured peak power or peak PSD level, in dBm or dBW;
- PAvg measured average power or average PSD level, in dBm or dBW.

OR

The transmitter output was connected to a calibrated coaxial cable and coupler, the other end of which was connected to a spectrum analyzer.

- a) Set resolution/measurement bandwidth \geq signal's occupied bandwidth
- b) Set the number of counts to a value that stabilizes the measured CCDF curve
- c) Record the maximum PAPR level associated with a probability of 0.1 %

Note: The cable loss and attenuator loss were offset into measure device as an amplitude offset.

Test Setup: Refer to section 4.2.2 for details.

Instruments Used: Refer to section 3 for details

Test Mode: Link mode

Test Results: Pass

Test Data: See table below

Bands	Modulation	Peak-to-average ratio (dB)			Limit (dBm)	Result
		Lowest	Middle	Highest		
GSM 850	GSM	0.26	0.30	0.27	13	Pass
	EDGE	0.30	0.28	0.26	13	Pass
PCS 1900	GSM	0.31	0.32	0.27	13	Pass
	EDGE	0.30	0.31	0.28	13	Pass
WCDMA Band II	RMC 12.2kbps	2.17	2.46	2.43	13	Pass
WCDMA Band IV	RMC 12.2kbps	2.78	2.64	2.41	13	Pass
WCDMA Band V	RMC 12.2kbps	2.90	2.90	2.84	13	Pass



The test plots as follows:



Shenzhen UnionTrust Quality and Technology Co., Ltd.

Address: 16/F, Block A, Building 6, Baoneng Science and Technology Park, Qingxiang Road No.1, Longhua New District, Shenzhen, China

Tel: +86-755-28230888

Fax: +86-755-28230886

E-mail: info@uttlab.com

<http://www.uttlab.com>

UTTR-RF-FCC23G-V1.0



Shenzhen UnionTrust Quality and Technology Co., Ltd.

Address: 16/F, Block A, Building 6, Baoneng Science and Technology Park, Qingxiang Road No.1, Longhua New District, Shenzhen, China

Tel: +86-755-28230888

Fax: +86-755-28230886

E-mail: info@uttlab.com

<http://www.uttlab.com>

UTTR-RF-FCC23G-V1.0



Shenzhen UnionTrust Quality and Technology Co., Ltd.

Address: 16/F, Block A, Building 6, Baoneng Science and Technology Park, Qingxiang Road No.1, Longhua New District, Shenzhen, China

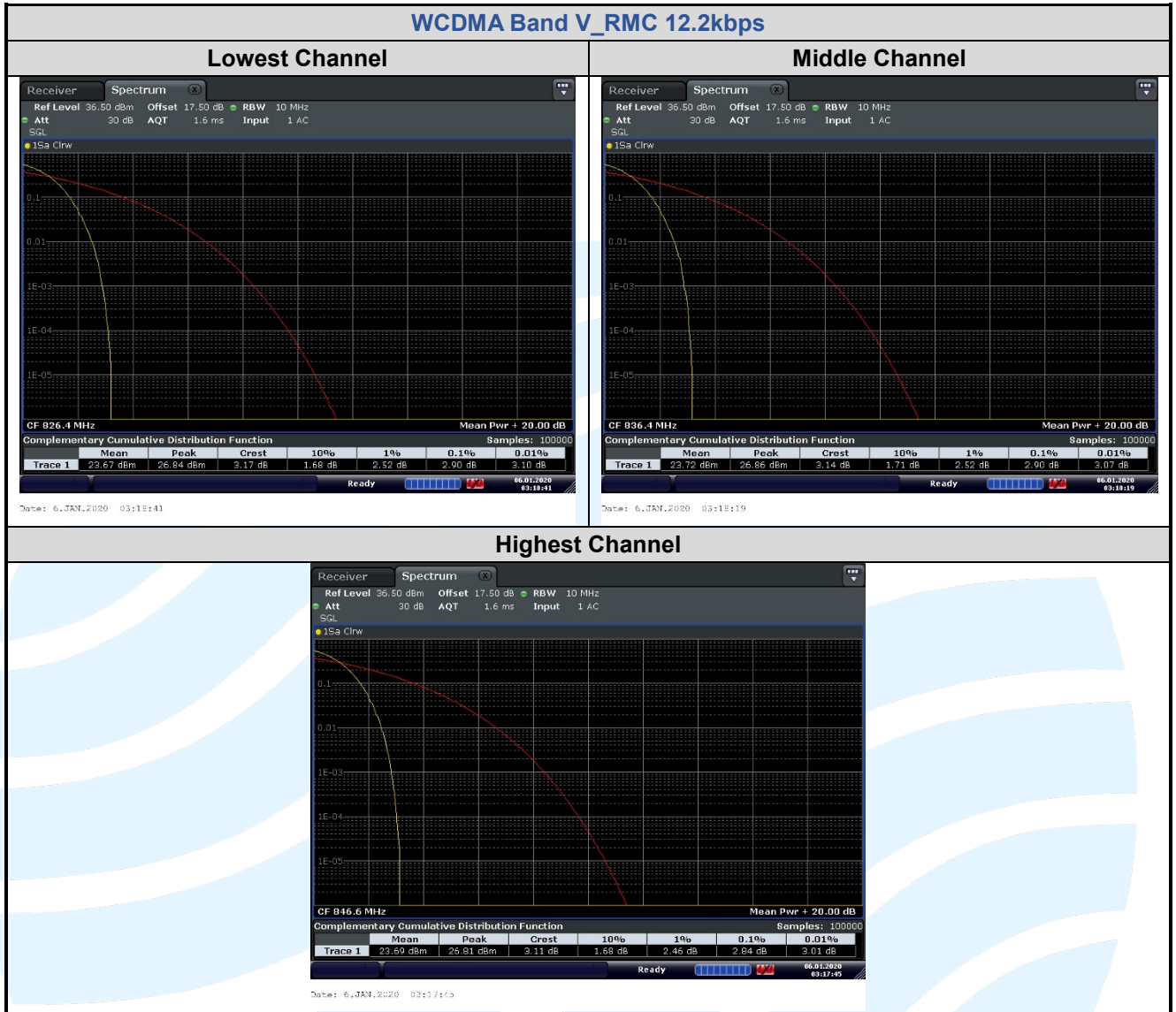
Tel: +86-755-28230888

Fax: +86-755-28230886

E-mail: info@uttlab.com

<http://www.uttlab.com>

UTTR-RF-FCC23G-V1.0



5.599%&26DB BANDWIDTH

Test Requirement: FCC 47 CFR Part 2.1049(h),
 FCC 47 CFR Part 22.917(b),
 FCC 47 CFR Part 24.238(b),
 FCC 47 CFR Part 27.53(h)

Test Method: ANSI C63.26-2015 & KDB 971168 D01v03r01 Section 4

Limit: No Limit, for reporting purposes only.

Test Procedure:

The transmitter output was connected to a calibrated coaxial cable and coupler, the other end of which was connected to a spectrum analyzer. The occupied bandwidth was measured with the spectrum analyzer at the low, middle and high channel in each band. The 99% and -26dB bandwidths was also measured and recorded.

Note: The cable loss and attenuator loss were offset into measure device as an amplitude offset.

Test Setup: Refer to section 4.2.2 for details.

Instruments Used: Refer to section 3 for details

Test Mode: Link mode

Test Results: Pass

Test Data: See table below

Bands	Modulation	Channel	Frequency (MHz)	26 dB BW (kHz)	99% BW (kHz)
GSM 850	GSM	128	824.2	321.4	247.66
		190	836.6	314.1	245.93
		251	848.8	315.6	246.35
	EDGE	128	824.2	318.1	247.49
		190	836.6	317.4	245.43
		251	848.8	311.1	244.12
PCS 1900	GSM	512	1850.2	322.1	247.17
		661	1880.0	320.3	244.72
		810	1909.8	320.8	246.57
	EDGE	512	1850.2	314.6	242.13
		661	1880.0	318.1	245.36
		810	1909.8	315.2	242.22

Bands	Modulation	Channel	Frequency (MHz)	26 dB BW (MHz)	99% BW (MHz)
WCDMA Band II	RMC 12.2kbps	9262	1852.4	4.762	4.2013
		9400	1880.0	4.757	4.1917
		9538	1907.6	4.740	4.1748
WCDMA Band IV	RMC 12.2kbps	1312	1712.4	4.725	4.1804
		1412	1732.4	4.736	4.1807
		1513	1752.6	4.757	4.1949
WCDMA Band V	RMC 12.2kbps	4132	826.4	4.719	4.1751
		4182	836.4	4.743	4.1783
		4233	846.6	4.717	4.1893

Shenzhen UnionTrust Quality and Technology Co., Ltd.