



REPORT No.: SZ21070267S01

## Annex C Plots of System Performance Check

## System Check\_750MHz\_Head

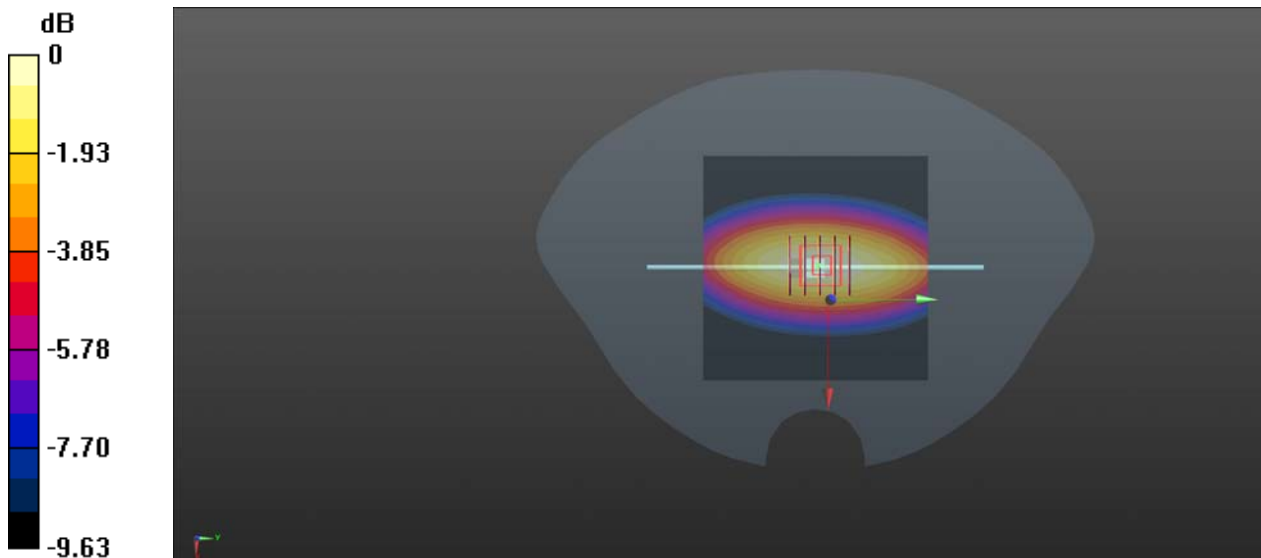
Communication System: UID 0, CW (0); Frequency: 750 MHz; Duty Cycle: 1:1  
Medium: HSL\_750 Medium parameters used:  $f = 750 \text{ MHz}$ ;  $\sigma = 0.901 \text{ S/m}$ ;  $\epsilon_r = 42.183$ ;  $\rho = 1000 \text{ kg/m}^3$   
Ambient Temperature : 23.2 °C; Liquid Temperature : 22.1 °C

### DASY5 Configuration:

- Probe: ES3DV3 - SN3154; ConvF(6.34, 6.34, 6.34) @ 750 MHz; Calibrated: 2019.07.16
- Sensor-Surface: 4mm (Mechanical Surface Detection)
- Electronics: DAE4 Sn480; Calibrated: 2019.04.11
- Phantom: SAM 1; Type: QD000P40CC; Serial: TP:xxxx
- Measurement SW: DASY52, Version 52.8 (8); SEMCAD X Version 14.6.14 (7483)

**CW 750/Area Scan (81x81x1):** Interpolated grid:  $dx=1.500 \text{ mm}$ ,  $dy=1.500 \text{ mm}$   
Maximum value of SAR (interpolated) = 2.31 W/kg

**CW 750/Zoom Scan (5x5x7)/Cube 0:** Measurement grid:  $dx=8\text{mm}$ ,  $dy=8\text{mm}$ ,  $dz=5\text{mm}$   
Reference Value = 51.98 V/m; Power Drift = -0.04 dB  
Peak SAR (extrapolated) = 3.12 W/kg  
**SAR(1 g) = 2.11 W/kg; SAR(10 g) = 1.35 W/kg**  
Smallest distance from peaks to all points 3 dB below: Larger than measurement grid  
Ratio of SAR at M2 to SAR at M1 = 69%  
Maximum value of SAR (measured) = 2.30 W/kg



0 dB = 2.30 W/kg

## System Check\_900MHz\_Head

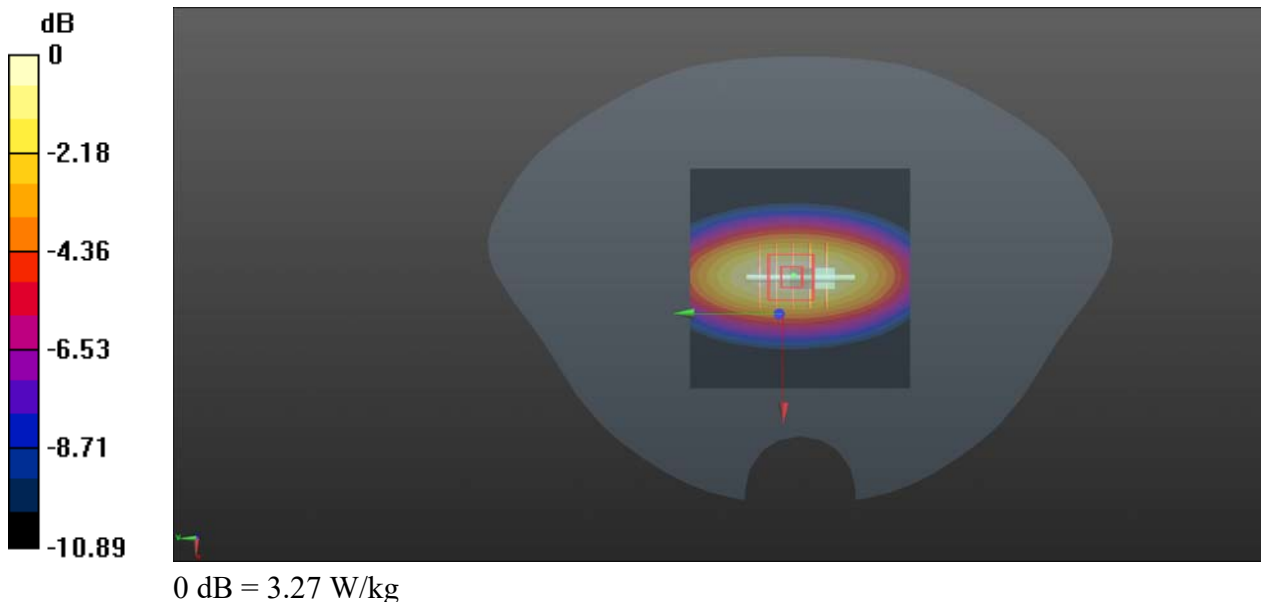
Communication System: UID 0, CW (0); Frequency: 900 MHz; Duty Cycle: 1:1  
Medium: HSL\_900 Medium parameters used:  $f = 900 \text{ MHz}$ ;  $\sigma = 0.969 \text{ S/m}$ ;  $\epsilon_r = 41.612$ ;  $\rho = 1000 \text{ kg/m}^3$   
Ambient Temperature : 23.1 °C; Liquid Temperature : 22.3 °C

### DASY5 Configuration:

- Probe: EX3DV4 - SN3823; ConvF(9.31, 9.31, 9.31) @ 900 MHz; Calibrated: 2021.01.22
- Sensor-Surface: 2mm (Mechanical Surface Detection)
- Electronics: DAE4 Sn480; Calibrated: 2021.06.22
- Phantom: SAM 2; Type: QD000P40CC; Serial: TP:1464
- Measurement SW: DASY52, Version 52.10 (4); SEMCAD X Version 14.6.14 (7483)

**CW900/Area Scan (71x71x1):** Interpolated grid:  $dx=1.500 \text{ mm}$ ,  $dy=1.500 \text{ mm}$   
Maximum value of SAR (interpolated) = 3.24 W/kg

**CW900/Zoom Scan (5x5x7)/Cube 0:** Measurement grid:  $dx=8\text{mm}$ ,  $dy=8\text{mm}$ ,  $dz=5\text{mm}$   
Reference Value = 55.19 V/m; Power Drift = -0.07 dB  
Peak SAR (extrapolated) = 3.85 W/kg  
**SAR(1 g) = 2.74 W/kg; SAR(10 g) = 1.81 W/kg**  
Smallest distance from peaks to all points 3 dB below = 16 mm  
Ratio of SAR at M2 to SAR at M1 = 66.3%  
Maximum value of SAR (measured) = 3.27 W/kg



## System Check\_1800MHz\_Head

Communication System: UID 0, CW (0); Frequency: 1800 MHz; Duty Cycle: 1:1  
Medium: HSL\_1800 Medium parameters used:  $f = 1800$  MHz;  $\sigma = 1.406$  S/m;  $\epsilon_r = 40.516$ ;  $\rho = 1000$  kg/m<sup>3</sup>

Ambient Temperature : 23.2 °C; Liquid Temperature : 22.1 °C

DASY5 Configuration:

- Probe: EX3DV4 - SN3823; ConvF(7.98, 7.98, 7.98) @ 1800 MHz; Calibrated: 2021.01.22
- Sensor-Surface: 2mm (Mechanical Surface Detection)
- Electronics: DAE4 Sn480; Calibrated: 2021.06.22
- Phantom: SAM 2; Type: QD000P40CC; Serial: TP:1464
- Measurement SW: DASY52, Version 52.10 (4); SEMCAD X Version 14.6.14 (7483)

**CW1800/Area Scan (81x81x1):** Interpolated grid: dx=1.500 mm, dy=1.500 mm

Maximum value of SAR (interpolated) = 14.5 W/kg

**CW1800/Zoom Scan (5x5x7)/Cube 0:** Measurement grid: dx=8mm, dy=8mm, dz=5mm

Reference Value = 87.77 V/m; Power Drift = -0.07 dB

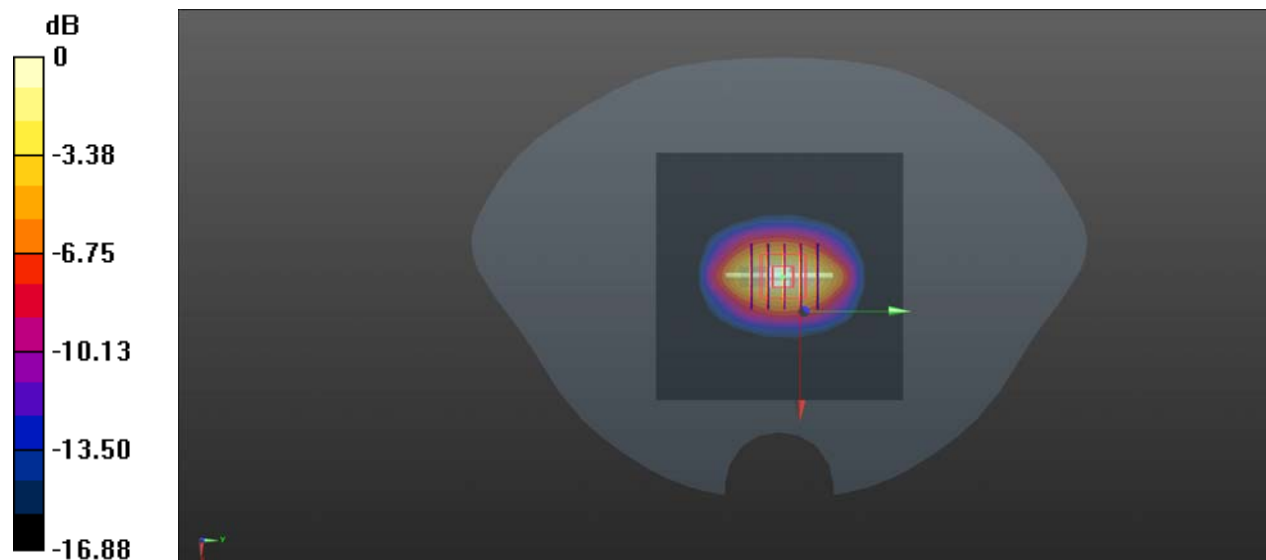
Peak SAR (extrapolated) = 18.2 W/kg

**SAR(1 g) = 9.89 W/kg; SAR(10 g) = 5.17 W/kg**

Smallest distance from peaks to all points 3 dB below = 11.2 mm

Ratio of SAR at M2 to SAR at M1 = 56.2%

Maximum value of SAR (measured) = 14.5 W/kg



## System Check\_2000MHz\_Head

Communication System: UID 0, CW (0); Frequency: 2000 MHz; Duty Cycle: 1:1  
Medium: HSL\_2000 Medium parameters used:  $f = 2000$  MHz;  $\sigma = 1.397$  S/m;  $\epsilon_r = 39.418$ ;  $\rho = 1000$  kg/m<sup>3</sup>

Ambient Temperature : 23.2 °C; Liquid Temperature : 22.1 °C

DASY5 Configuration:

- Probe: EX3DV4 - SN3823; ConvF(7.79, 7.79, 7.79) @ 2000 MHz; Calibrated: 2021.01.22
- Sensor-Surface: 4mm (Mechanical Surface Detection)
- Electronics: DAE4 Sn480; Calibrated: 2021.06.22
- Phantom: SAM 2; Type: QD000P40CC; Serial: TP:1464
- Measurement SW: DASY52, Version 52.10 (4); SEMCAD X Version 14.6.14 (7483)

**CW2000/Area Scan (81x81x1):** Interpolated grid: dx=1.500 mm, dy=1.500 mm

Maximum value of SAR (interpolated) = 11.9 W/kg

**CW2000/Zoom Scan (5x5x7)/Cube 0:** Measurement grid: dx=8mm, dy=8mm, dz=5mm

Reference Value = 91.90 V/m; Power Drift = 0.02 dB

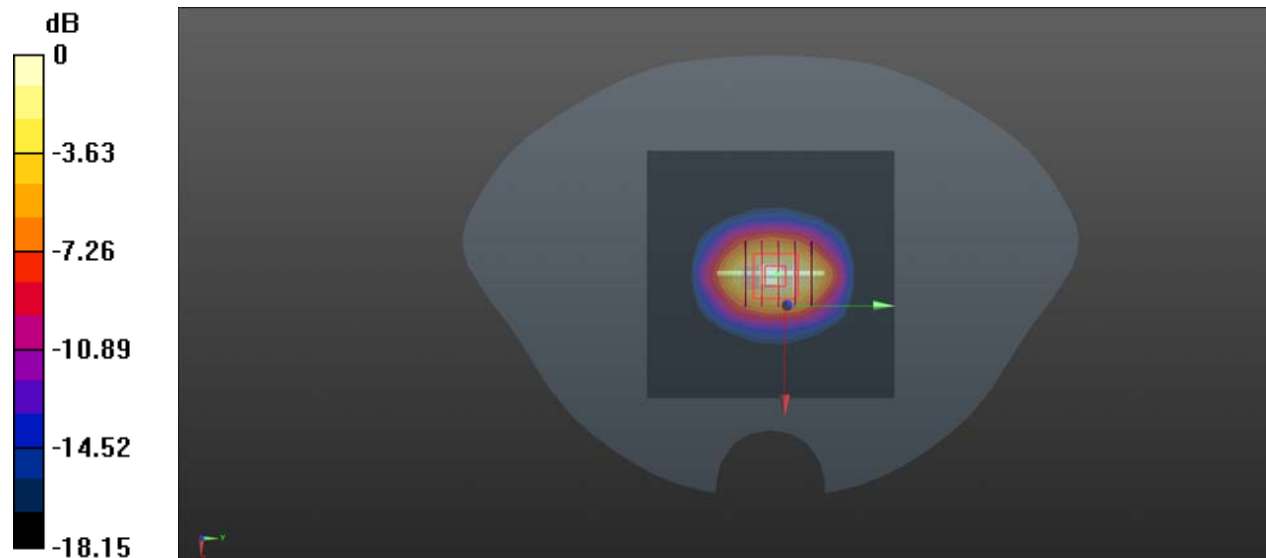
Peak SAR (extrapolated) = 19.1 W/kg

**SAR(1 g) = 10.38 W/kg; SAR(10 g) = 5.17 W/kg**

Smallest distance from peaks to all points 3 dB below = 11.2 mm

Ratio of SAR at M2 to SAR at M1 = 55.6%

Maximum value of SAR (measured) = 11.6 W/kg



## System Check\_2450MHz\_Head

Communication System: UID 0, CW (0); Frequency: 2450 MHz; Duty Cycle: 1:1  
Medium: HSL\_2450 Medium parameters used:  $f = 2450$  MHz;  $\sigma = 1.814$  S/m;  $\epsilon_r = 38.63$ ;  $\rho = 1000$  kg/m<sup>3</sup>

Ambient Temperature : 23.2 °C; Liquid Temperature : 22.4 °C

DASY5 Configuration:

- Probe: EX3DV4 - SN3823; ConvF(7.28, 7.28, 7.28) @ 2450 MHz; Calibrated: 2021.01.22
- Sensor-Surface: 4mm (Mechanical Surface Detection)
- Electronics: DAE4 Sn480; Calibrated: 2021.06.22
- Phantom: SAM 2; Type: QD000P40CC; Serial: TP:1464
- Measurement SW: DASY52, Version 52.10 (4); SEMCAD X Version 14.6.14 (7483)

**CW2450/Area Scan (81x101x1):** Interpolated grid: dx=1.200 mm, dy=1.200 mm  
Maximum value of SAR (interpolated) = 16.1 W/kg

**CW2450/Zoom Scan (7x7x7)/Cube 0:** Measurement grid: dx=5mm, dy=5mm, dz=5mm

Reference Value = 89.48 V/m; Power Drift = 0.05 dB

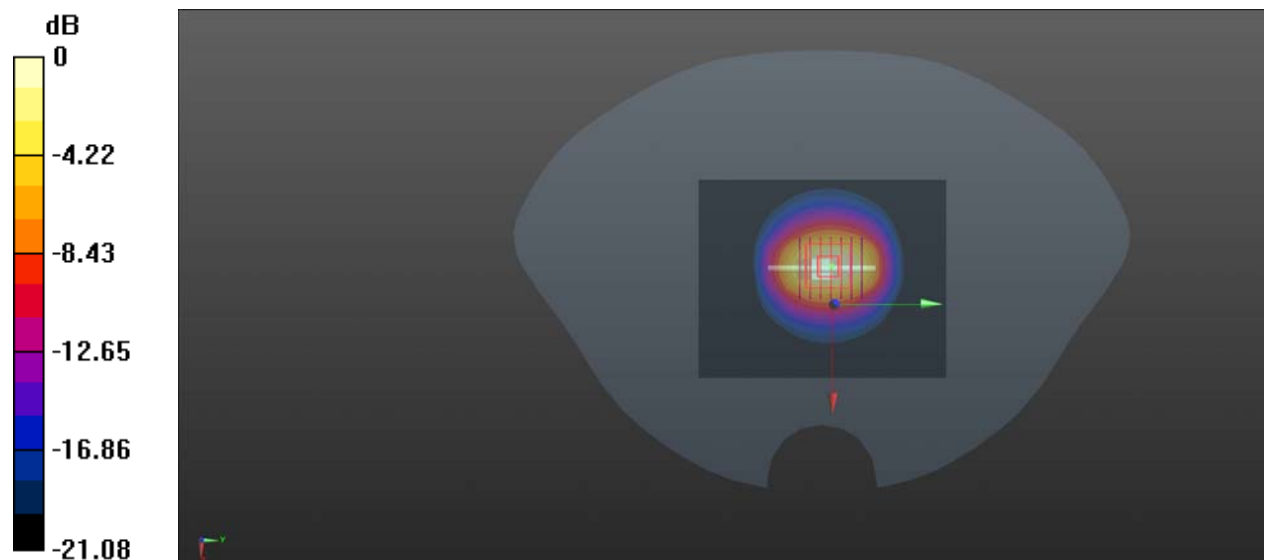
Peak SAR (extrapolated) = 26.8 W/kg

**SAR(1 g) = 13.18 W/kg; SAR(10 g) = 6.33 W/kg**

Smallest distance from peaks to all points 3 dB below = 10 mm

Ratio of SAR at M2 to SAR at M1 = 50.9%

Maximum value of SAR (measured) = 14.9 W/kg



0 dB = 14.9 W/kg

## System Check\_2600MHz\_Head

Communication System: UID 0, CW (0); Frequency: 2600 MHz; Duty Cycle: 1:1  
Medium: HSL\_2600 Medium parameters used:  $f = 2600$  MHz;  $\sigma = 1.946$  S/m;  $\epsilon_r = 38.542$ ;  $\rho = 1000$  kg/m<sup>3</sup>

Ambient Temperature : 23.2 °C; Liquid Temperature : 22.2 °C

DASY5 Configuration:

- Probe: EX3DV4 - SN3823; ConvF(7, 7, 7) @ 2600 MHz; Calibrated: 2020.01.03
- Sensor-Surface: 4mm (Mechanical Surface Detection)
- Electronics: DAE4 Sn871; Calibrated: 2019.06.27
- Phantom: SAM 1; Type: QD000P40CC; Serial: TP:xxxx
- Measurement SW: DASY52, Version 52.8 (8); SEMCAD X Version 14.6.14 (7483)

**CW2600/Area Scan (81x101x1):** Interpolated grid: dx=1.200 mm, dy=1.200 mm  
Maximum value of SAR (interpolated) = 16.9 W/kg

**CW2600/Zoom Scan (7x7x7)/Cube 0:** Measurement grid: dx=5mm, dy=5mm, dz=5mm

Reference Value = 87.76 V/m; Power Drift = 0.02 dB

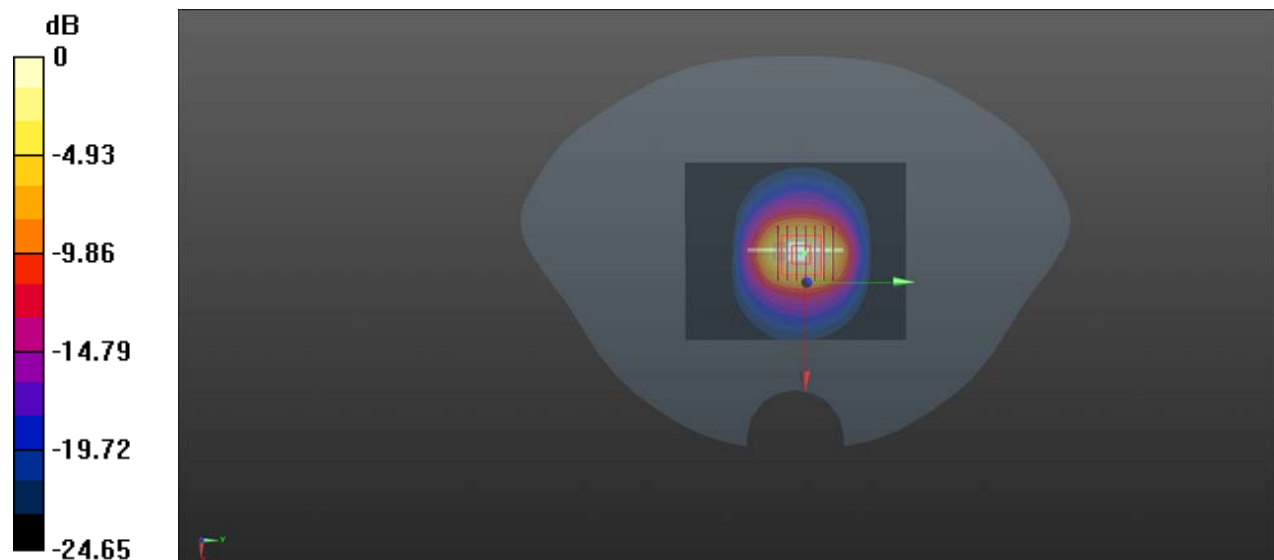
Peak SAR (extrapolated) = 31.7 W/kg

**SAR(1 g) = 13.53 W/kg; SAR(10 g) = 6.27 W/kg**

Smallest distance from peaks to all points 3 dB below = 9 mm

Ratio of SAR at M2 to SAR at M1 = 45.7%

Maximum value of SAR (measured) = 16.0 W/kg



0 dB = 16.0 W/kg

## System Check\_5250MHz\_Head

Communication System: UID 0, CW (0); Frequency: 5250 MHz; Duty Cycle: 1:1  
Medium: HSL\_5250 Medium parameters used:  $f = 5250$  MHz;  $\sigma = 4.705$  S/m;  $\epsilon_r = 37.881$ ;  $\rho = 1000$  kg/m<sup>3</sup>

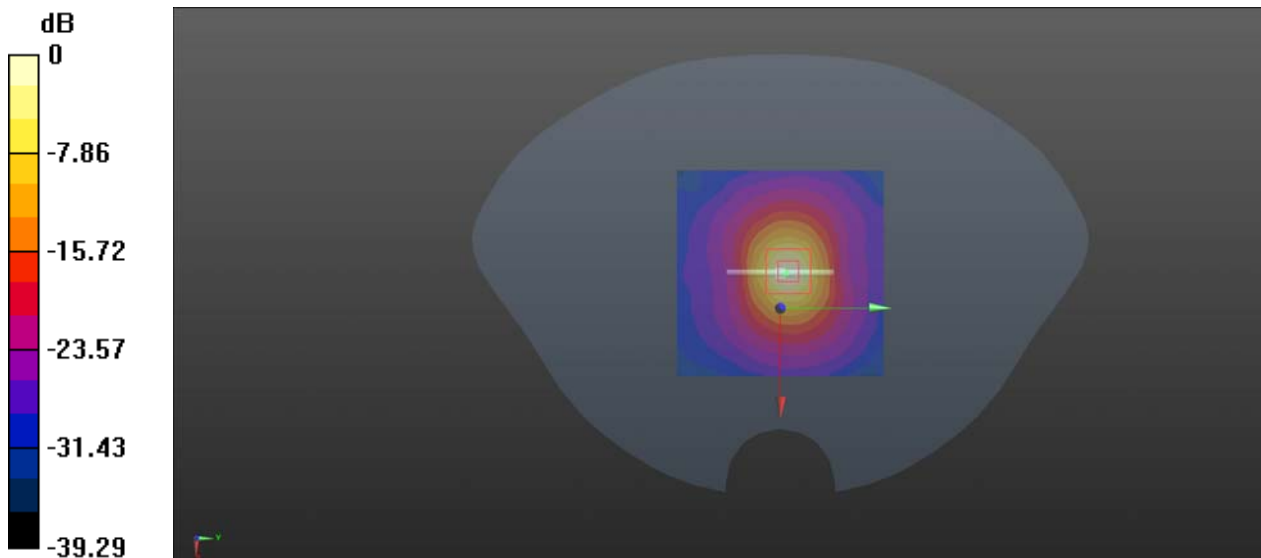
Ambient Temperature : 23.2 °C; Liquid Temperature : 22.3 °C

DASY5 Configuration:

- Probe: EX3DV4 - SN3823; ConvF(5.28, 5.28, 5.28) @ 5250 MHz; Calibrated: 2018.11.12
- Sensor-Surface: 2mm (Mechanical Surface Detection)
- Electronics: DAE4 Sn480; Calibrated: 2021.06.22
- Phantom: SAM 2; Type: QD000P40CC; Serial: TP:1464
- Measurement SW: DASY52, Version 52.10 (4); SEMCAD X Version 14.6.14 (7483)

**CW5250/Area Scan (101x101x1):** Interpolated grid: dx=1.000 mm, dy=1.000 mm  
Maximum value of SAR (interpolated) = 16.5 W/kg

**CW5250/Zoom Scan (7x7x13)/Cube 0:** Measurement grid: dx=4mm, dy=4mm, dz=2mm  
Reference Value = 43.37 V/m; Power Drift = 0.04 dB  
Peak SAR (extrapolated) = 32.8 W/kg  
**SAR(1 g) = 8.09 W/kg; SAR(10 g) = 2.32 W/kg**  
Smallest distance from peaks to all points 3 dB below = 7.2 mm  
Ratio of SAR at M2 to SAR at M1 = 55.2%  
Maximum value of SAR (measured) = 16.8 W/kg



0 dB = 16.8 W/kg



## System Check\_5600MHz\_Head

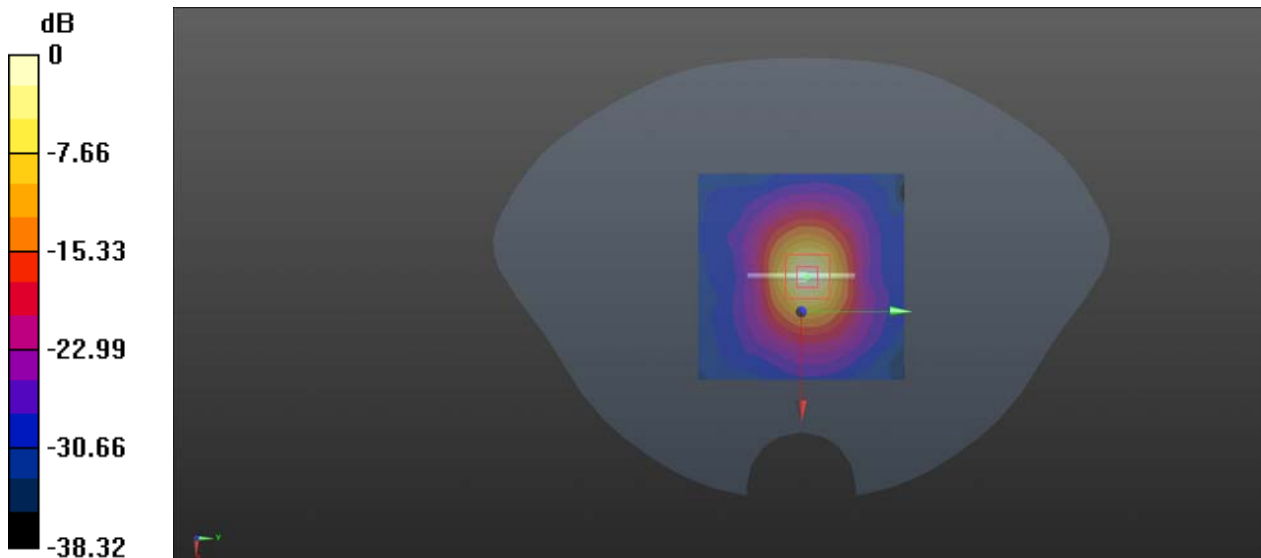
Communication System: UID 0, CW (0); Frequency: 5600 MHz; Duty Cycle: 1:1  
Medium: HSL\_5600 Medium parameters used:  $f = 5600$  MHz;  $\sigma = 5.121$  S/m;  $\epsilon_r = 35.762$ ;  $\rho = 1000$  kg/m<sup>3</sup>  
Ambient Temperature : 23.2 °C; Liquid Temperature : 22.3 °C

### DASY5 Configuration:

- Probe: EX3DV4 - SN3823; ConvF(4.5, 4.5, 4.5) @ 5600 MHz; Calibrated: 2018.11.12
- Sensor-Surface: 2mm (Mechanical Surface Detection)
- Electronics: DAE4 Sn480; Calibrated: 2021.06.22
- Phantom: SAM 2; Type: QD000P40CC; Serial: TP:1464
- Measurement SW: DASY52, Version 52.10 (4); SEMCAD X Version 14.6.14 (7483)

**CW5600/Area Scan (101x101x1):** Interpolated grid: dx=1.000 mm, dy=1.000 mm  
Maximum value of SAR (interpolated) = 19.8 W/kg

**CW5600/Zoom Scan (7x7x13)/Cube 0:** Measurement grid: dx=4mm, dy=4mm, dz=2mm  
Reference Value = 44.82 V/m; Power Drift = 0.11 dB  
Peak SAR (extrapolated) = 40.6 W/kg  
**SAR(1 g) = 8.39 W/kg; SAR(10 g) = 2.39 W/kg**  
Smallest distance from peaks to all points 3 dB below = 7.4 mm  
Ratio of SAR at M2 to SAR at M1 = 53.2%  
Maximum value of SAR (measured) = 20.2 W/kg



0 dB = 19.8 W/kg

## System Check\_5750MHz\_Head

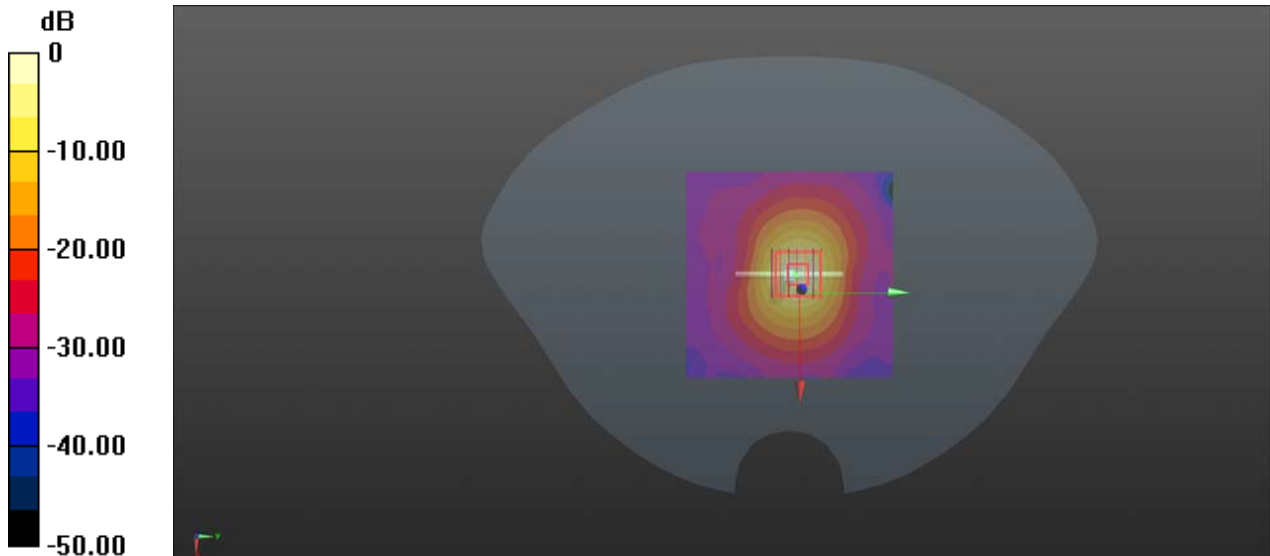
Communication System: UID 0, CW (0); Frequency: 5750 MHz; Duty Cycle: 1:1  
Medium: HSL\_5750 Medium parameters used:  $f = 5750$  MHz;  $\sigma = 5.275$  S/m;  $\epsilon_r = 35.844$ ;  $\rho = 1000$  kg/m<sup>3</sup>  
Ambient Temperature : 23.2 °C; Liquid Temperature : 22.3 °C

### DASY5 Configuration:

- Probe: EX3DV4 - SN3823; ConvF(4.6, 4.6, 4.6) @ 5750 MHz; Calibrated: 2018.11.12
- Sensor-Surface: 2mm (Mechanical Surface Detection)
- Electronics: DAE4 Sn480; Calibrated: 2021.06.22
- Phantom: SAM 2; Type: QD000P40CC; Serial: TP:1464
- Measurement SW: DASY52, Version 52.10 (4); SEMCAD X Version 14.6.14 (7483)

**CW5750/Area Scan (101x101x1):** Interpolated grid: dx=1.000 mm, dy=1.000 mm  
Maximum value of SAR (interpolated) = 19.3 W/kg

**CW5750/Zoom Scan (7x7x13)/Cube 0:** Measurement grid: dx=4mm, dy=4mm, dz=2mm  
Reference Value = 42.38 V/m; Power Drift = 0.02 dB  
Peak SAR (extrapolated) = 38.8 W/kg  
**SAR(1 g) = 8.25 W/kg; SAR(10 g) = 2.38 W/kg**  
Smallest distance from peaks to all points 3 dB below = 7.2 mm  
Ratio of SAR at M2 to SAR at M1 = 53%  
Maximum value of SAR (measured) = 19.3 W/kg



0 dB = 19.3 W/kg