

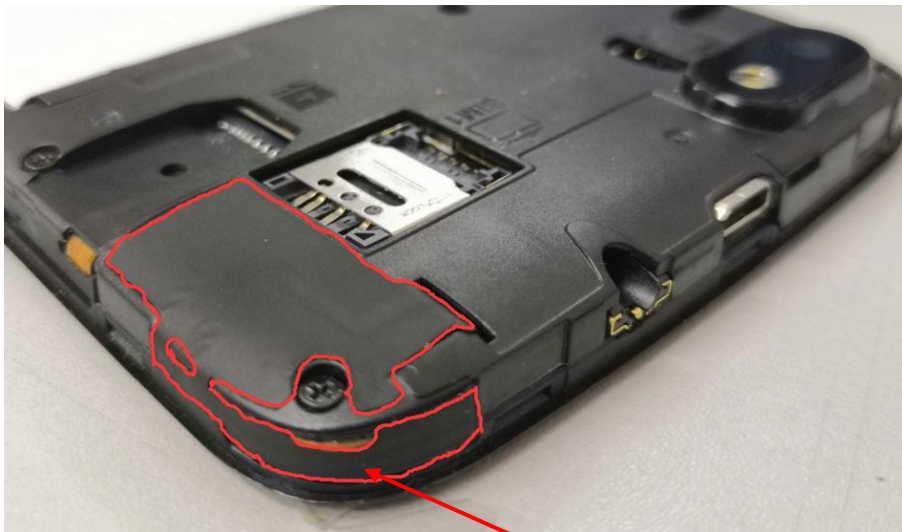
## Annex B Test Setup Photos

Dimensions (L\*W\*H):162mm (L) × 78mm (W) × 9mm (H)

Antenna map



WWAN Ant.

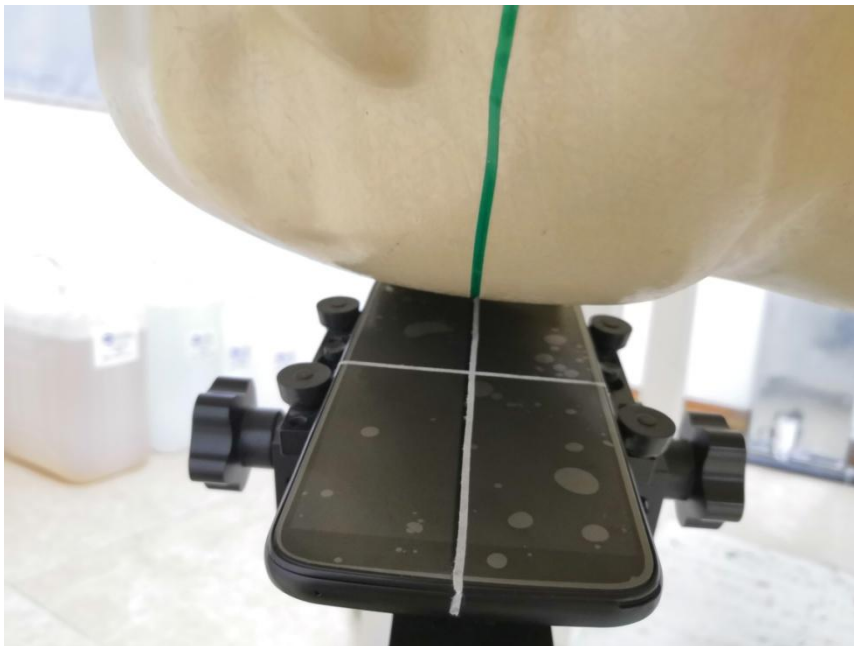


WIFI/BT Ant.

## Head



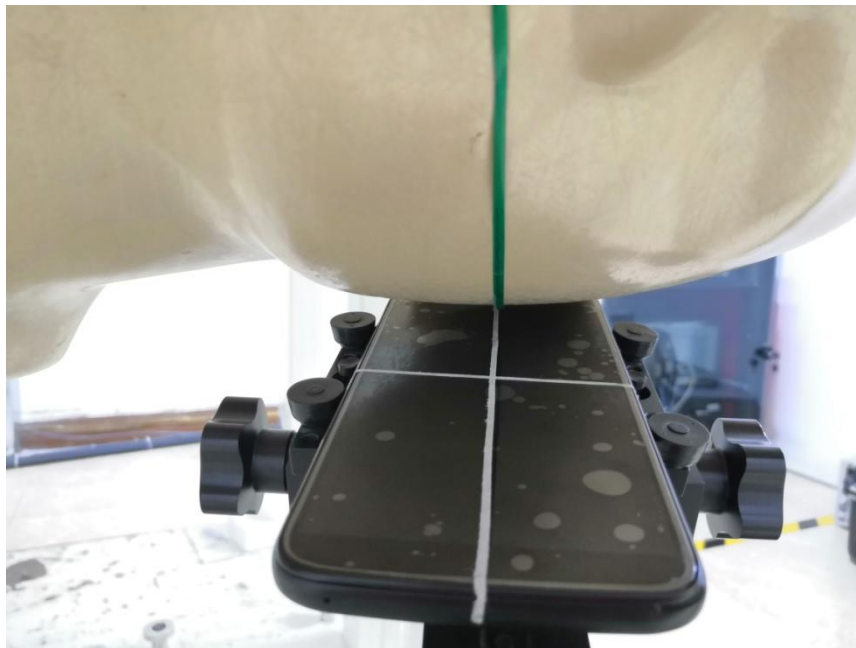
Right Cheek



Right Tilt



Left Cheek



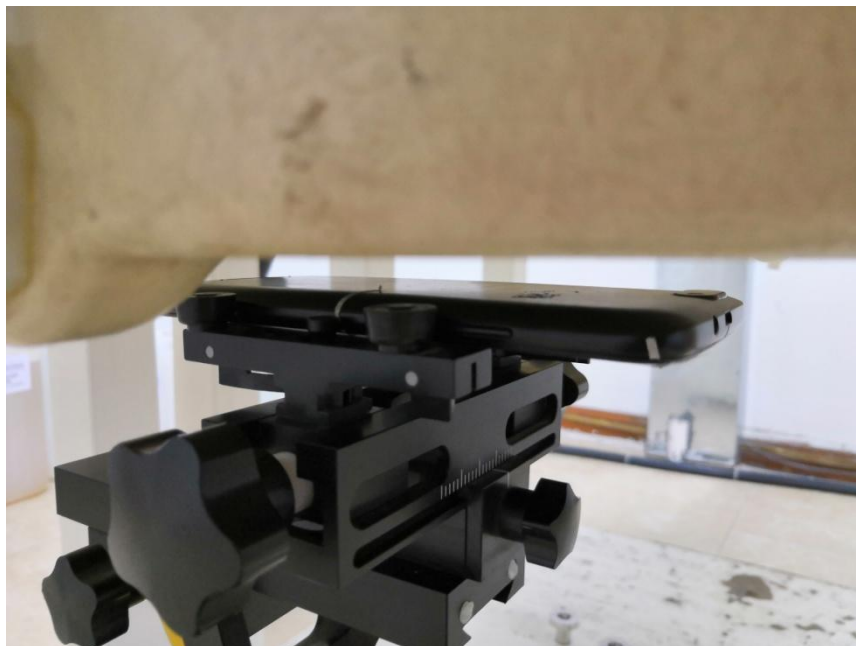
Left Tilt

**Body**



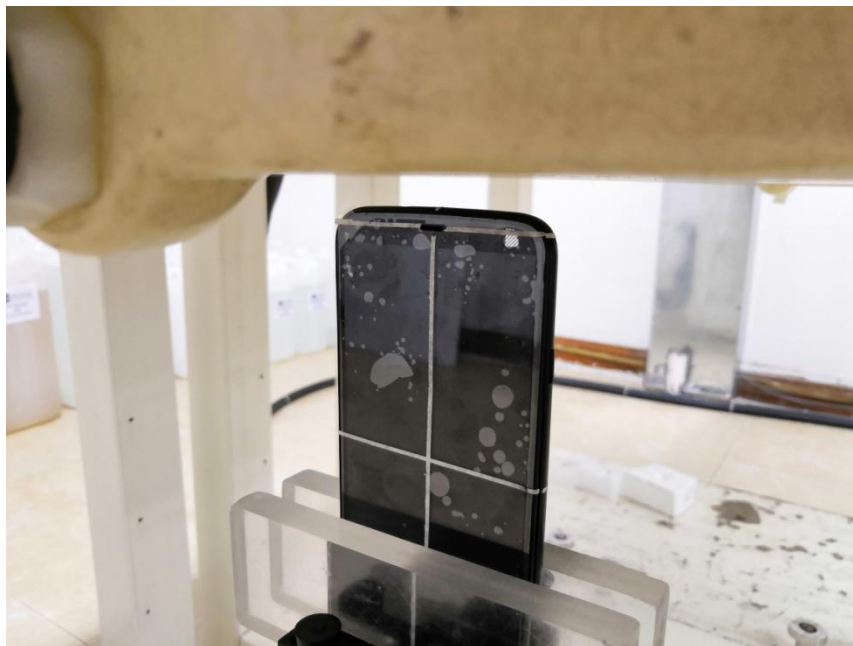
Front Side

(Test distance: 10mm, Thickness of EUT: 9mm)



Back Side

(Test distance: 10mm, Thickness of EUT: 9mm)



Top Side

(Test distance: 10mm, Thickness of EUT: 9mm)



Bottom Side

(Test distance: 10mm, Thickness of EUT: 9mm)



Left Side

(Test distance: 10mm, Thickness of EUT: 9mm)



Right Side

(Test distance: 10mm, Thickness of EUT: 9mm)