



REPORT No.: SZ21120367S01

Annex D Plots of Maximum SAR Test Results

GSM850_GPRS(2 TX slots)_Right Cheek_Ch189

Communication System: UID 0, GSM850(class 10) (0); Frequency: 836.4 MHz; Duty Cycle: 1:4.15
Medium: HSL_900 Medium parameters used: $f = 836.4$ MHz; $\sigma = 0.943$ S/m; $\epsilon_r = 42.978$; $\rho = 1000$ kg/m³

Ambient Temperature : 23.2 °C; Liquid Temperature : 22.3 °C

DASY5 Configuration:

- Probe: EX3DV4 - SN7608; ConvF(9.81, 9.81, 9.81) @ 900 MHz; Calibrated: 2022.01.12
- Sensor-Surface: 2mm (Mechanical Surface Detection)
- Electronics: DAE4 Sn1643; Calibrated: 2021.12.30
- Phantom: Twin-SAM; Type: QD 000 P41 Ax; Serial: 2020
- Measurement SW: DASY52, Version 52.10 (4); SEMCAD X Version 14.6.14 (7483)

Ch189/Area Scan (71x101x1): Interpolated grid: dx=1.500 mm, dy=1.500 mm

Maximum value of SAR (interpolated) = 0.421 W/kg

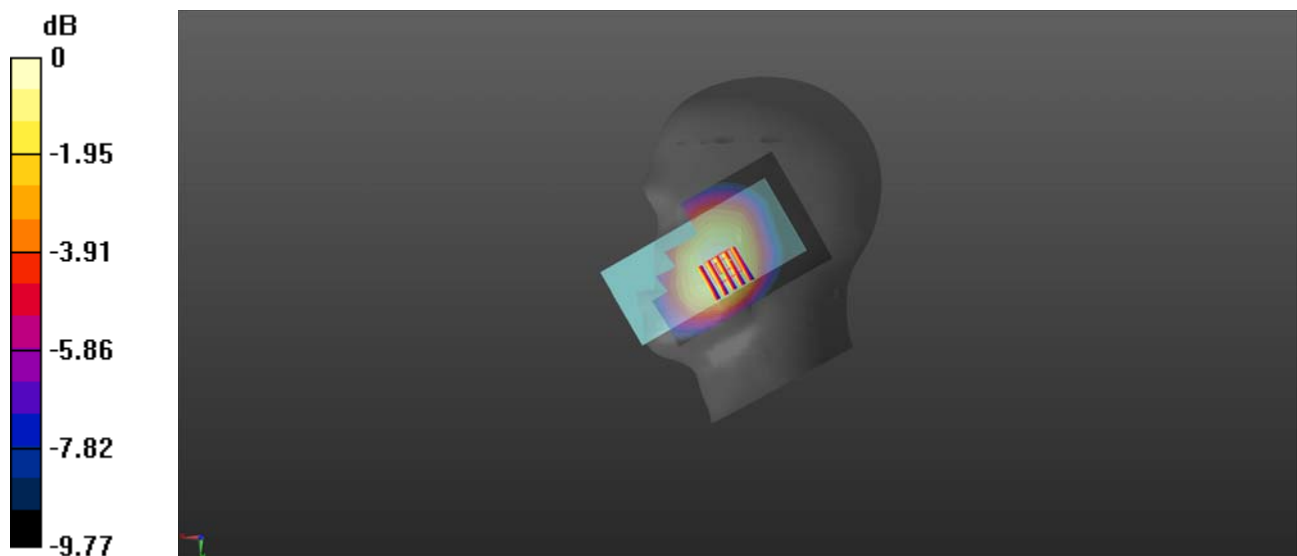
Ch189/Zoom Scan (5x5x7)/Cube 0: Measurement grid: dx=8mm, dy=8mm, dz=5mm

Reference Value = 5.554 V/m; Power Drift = 0.02 dB

Peak SAR (extrapolated) = 0.474 W/kg

SAR(1 g) = 0.364 W/kg; SAR(10 g) = 0.275 W/kg

Maximum value of SAR (measured) = 0.415 W/kg



0 dB = 0.421 W/kg

GSM1900_GPRS(3 TX slots)_Right Cheek_Ch661

Communication System: UID 0, GSM1900(class 11) (0); Frequency: 1880 MHz; Duty Cycle: 1:2.77
Medium: HSL_2000 Medium parameters used: $f = 1880$ MHz; $\sigma = 1.321$ S/m; $\epsilon_r = 39.882$; $\rho = 1000$ kg/m³

Ambient Temperature : 23.2 °C; Liquid Temperature : 22.4 °C

DASY5 Configuration:

- Probe: EX3DV4 - SN7608; ConvF(7.99, 7.99, 7.99) @ 2000 MHz; Calibrated: 2022.01.12
- Sensor-Surface: 2mm (Mechanical Surface Detection)
- Electronics: DAE4 Sn1643; Calibrated: 2021.12.30
- Phantom: Twin-SAM; Type: QD 000 P41 Ax; Serial: 2020
- Measurement SW: DASY52, Version 52.10 (4); SEMCAD X Version 14.6.14 (7483)

Ch661/Area Scan (71x91x1): Interpolated grid: dx=1.500 mm, dy=1.500 mm

Maximum value of SAR (interpolated) = 1.33 W/kg

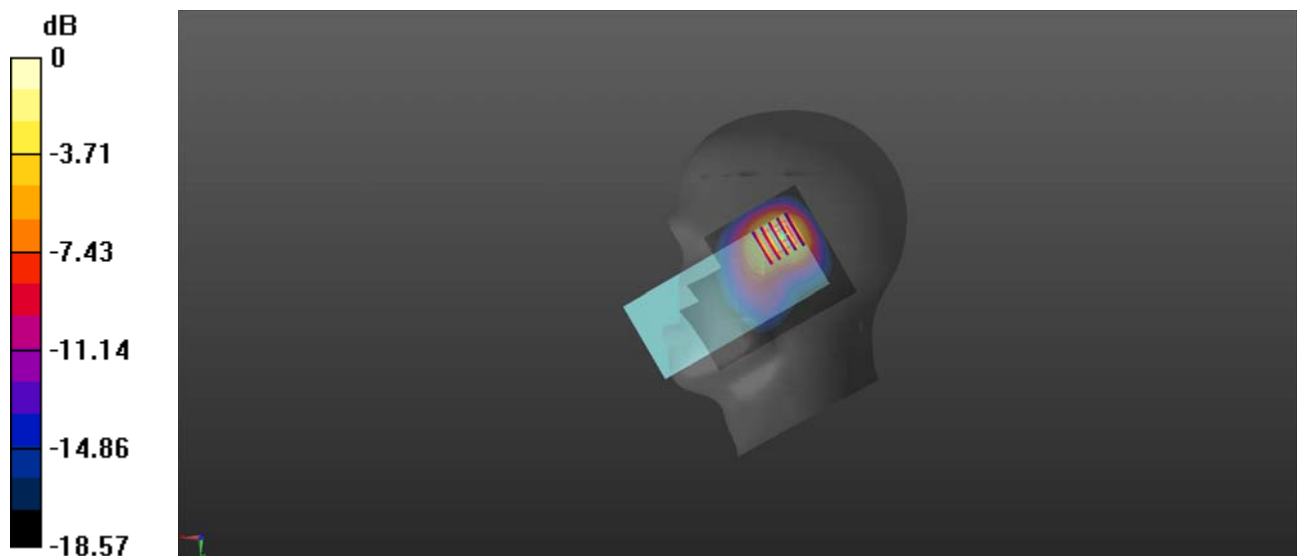
Ch661/Zoom Scan (5x5x7)/Cube 0: Measurement grid: dx=8mm, dy=8mm, dz=5mm

Reference Value = 16.03 V/m; Power Drift = -0.05 dB

Peak SAR (extrapolated) = 1.70 W/kg

SAR(1 g) = 0.922 W/kg; SAR(10 g) = 0.502 W/kg

Maximum value of SAR (measured) = 1.27 W/kg



0 dB = 1.33 W/kg

WCDMA Band II_RMC 12.2Kbps_Right Cheek_Ch9400

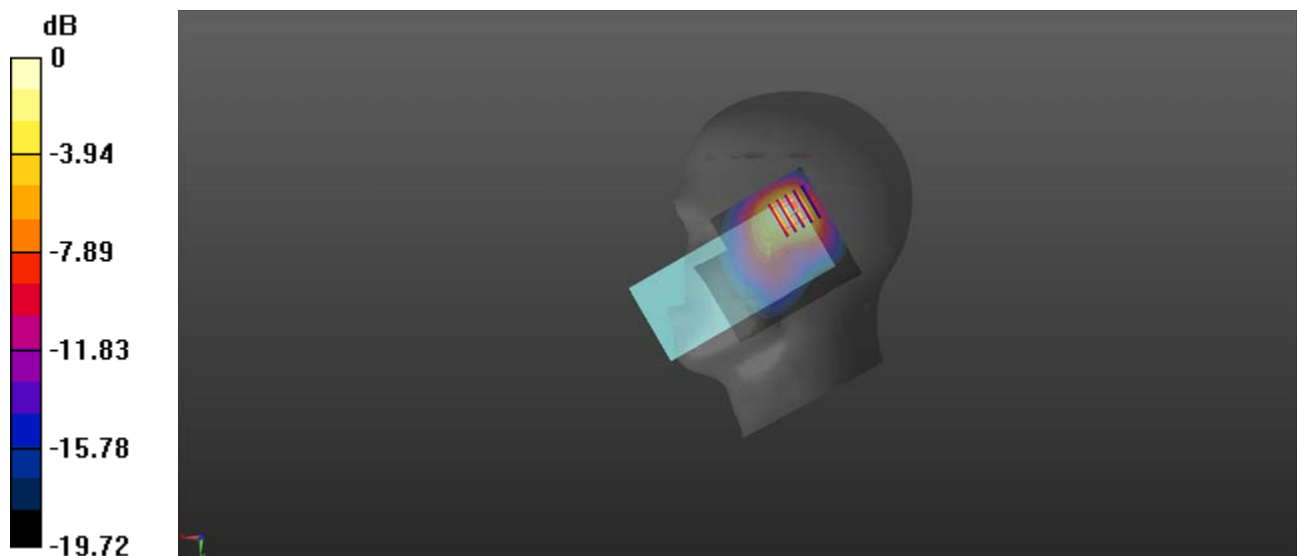
Communication System: UID 0, UMTS-FDD (0); Frequency: 1880 MHz; Duty Cycle: 1:1
Medium: HSL_2000 Medium parameters used: $f = 1880$ MHz; $\sigma = 1.321$ S/m; $\epsilon_r = 39.882$; $\rho = 1000$ kg/m³
Ambient Temperature : 23.2 °C; Liquid Temperature : 22.4 °C

DASY5 Configuration:

- Probe: EX3DV4 - SN7608; ConvF(7.99, 7.99, 7.99) @ 2000 MHz; Calibrated: 2022.01.12
- Sensor-Surface: 2mm (Mechanical Surface Detection)
- Electronics: DAE4 Sn1643; Calibrated: 2021.12.30
- Phantom: Twin-SAM; Type: QD 000 P41 Ax; Serial: 2020
- Measurement SW: DASY52, Version 52.10 (4); SEMCAD X Version 14.6.14 (7483)

Ch9400/Area Scan (71x81x1): Interpolated grid: dx=1.500 mm, dy=1.500 mm
Maximum value of SAR (interpolated) = 0.658 W/kg

Ch9400/Zoom Scan (5x5x7)/Cube 0: Measurement grid: dx=8mm, dy=8mm, dz=5mm
Reference Value = 10.17 V/m; Power Drift = -0.04 dB
Peak SAR (extrapolated) = 0.702 W/kg
SAR(1 g) = 0.885 W/kg; SAR(10 g) = 0.531 W/kg
Maximum value of SAR (measured) = 0.538 W/kg



0 dB = 0.658 W/kg

WCDMA Band IV_RMC 12.2Kbps_Right Cheek_Ch1413

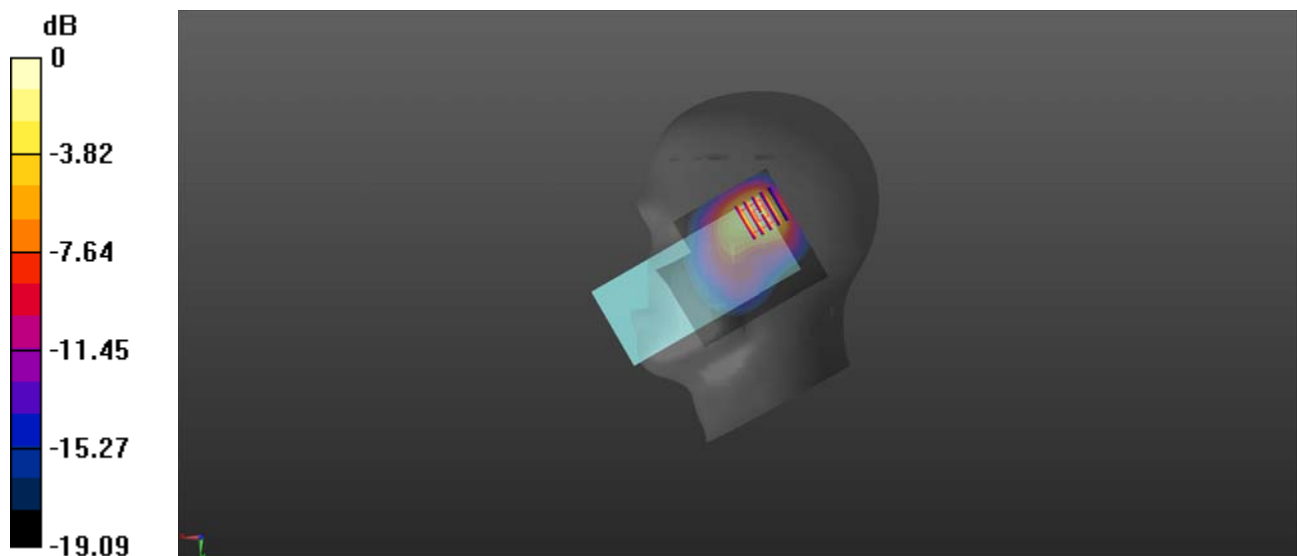
Communication System: UID 0, UMTS-FDD (0); Frequency: 1732.6 MHz; Duty Cycle: 1:1
Medium: HSL_1800 Medium parameters used: $f = 1733$ MHz; $\sigma = 1.366$ S/m; $\epsilon_r = 41.367$; $\rho = 1000$ kg/m³
Ambient Temperature : 23.2 °C; Liquid Temperature : 22.3 °C

DASY5 Configuration:

- Probe: EX3DV4 - SN7608; ConvF(8.26, 8.26, 8.26) @ 1800 MHz; Calibrated: 2022.01.12
- Sensor-Surface: 2mm (Mechanical Surface Detection)
- Electronics: DAE4 Sn1643; Calibrated: 2021.12.30
- Phantom: Twin-SAM; Type: QD 000 P41 Ax; Serial: 2020
- Measurement SW: DASY52, Version 52.10 (4); SEMCAD X Version 14.6.14 (7483)

Ch1413/Area Scan (71x81x1): Interpolated grid: dx=1.500 mm, dy=1.500 mm
Maximum value of SAR (interpolated) = 1.25 W/kg

Ch1413/Zoom Scan (5x5x7)/Cube 0: Measurement grid: dx=8mm, dy=8mm, dz=5mm
Reference Value = 14.38 V/m; Power Drift = 0.03 dB
Peak SAR (extrapolated) = 1.35 W/kg
SAR(1 g) = 0.767 W/kg; SAR(10 g) = 0.432 W/kg
Maximum value of SAR (measured) = 1.04 W/kg



0 dB = 1.25 W/kg

WCDMA Band V_RMC 12.2Kbps_Right Cheek_Ch4182

Communication System: UID 0, UMTS-FDD (0); Frequency: 836.4 MHz; Duty Cycle: 1:1
Medium: HSL_900 Medium parameters used: $f = 836.4$ MHz; $\sigma = 0.943$ S/m; $\epsilon_r = 42.978$; $\rho = 1000$ kg/m³

Ambient Temperature : 23.2 °C; Liquid Temperature : 22.3 °C

DASY5 Configuration:

- Probe: EX3DV4 - SN7608; ConvF(9.81, 9.81, 9.81) @ 900 MHz; Calibrated: 2022.01.12
- Sensor-Surface: 2mm (Mechanical Surface Detection)
- Electronics: DAE4 Sn1643; Calibrated: 2021.12.30
- Phantom: Twin-SAM; Type: QD 000 P41 Ax; Serial: 2020
- Measurement SW: DASY52, Version 52.10 (4); SEMCAD X Version 14.6.14 (7483)

Ch4182/Area Scan (71x101x1): Interpolated grid: dx=1.500 mm, dy=1.500 mm
Maximum value of SAR (interpolated) = 0.403 W/kg

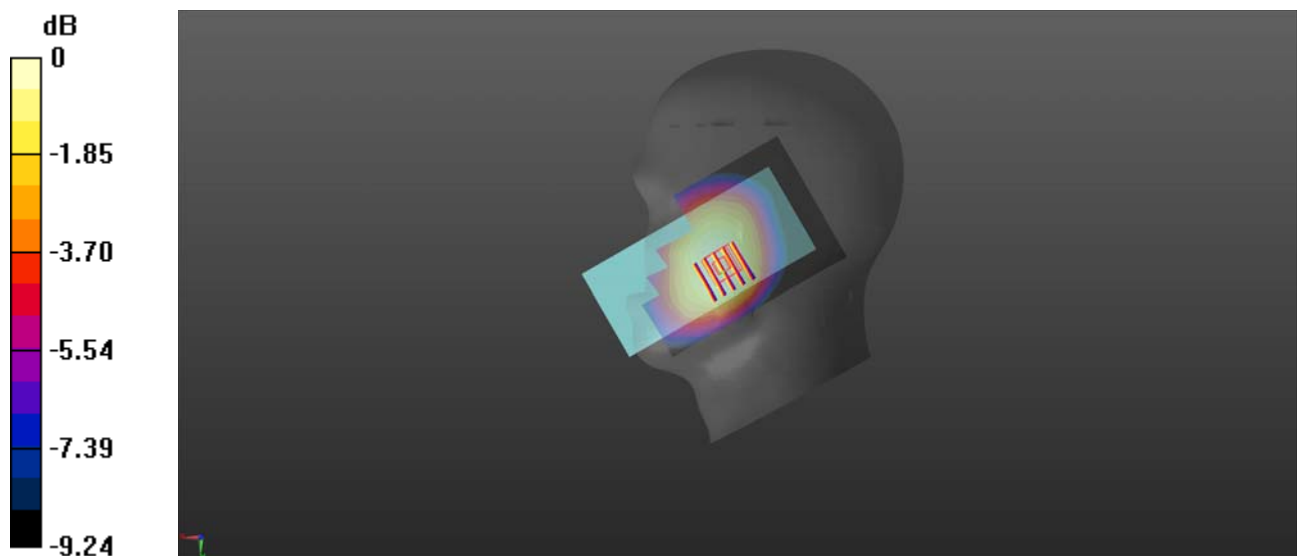
Ch4182/Zoom Scan (5x5x7)/Cube 0: Measurement grid: dx=8mm, dy=8mm, dz=5mm

Reference Value = 5.474 V/m; Power Drift = 0.05 dB

Peak SAR (extrapolated) = 0.455 W/kg

SAR(1 g) = 0.353 W/kg; SAR(10 g) = 0.269 W/kg

Maximum value of SAR (measured) = 0.405 W/kg



0 dB = 0.403 W/kg

LTE Band 2_20MHz_QPSK_1RB_0Offset_Right Cheek_Ch18900

Communication System: UID 0, LTE (0); Frequency: 1880 MHz; Duty Cycle: 1:1

Medium: HSL_2000 Medium parameters used: $f = 1880$ MHz; $\sigma = 1.321$ S/m; $\epsilon_r = 39.882$; $\rho = 1000$ kg/m³

Ambient Temperature : 23.2 °C; Liquid Temperature : 22.4 °C

DASY5 Configuration:

- Probe: EX3DV4 - SN7608; ConvF(7.99, 7.99, 7.99) @ 2000 MHz; Calibrated: 2022.01.12
- Sensor-Surface: 2mm (Mechanical Surface Detection)
- Electronics: DAE4 Sn1643; Calibrated: 2021.12.30
- Phantom: Twin-SAM; Type: QD 000 P41 Ax; Serial: 2020
- Measurement SW: DASY52, Version 52.10 (4); SEMCAD X Version 14.6.14 (7483)

Ch18900/Area Scan (71x81x1): Interpolated grid: dx=1.500 mm, dy=1.500 mm

Maximum value of SAR (interpolated) = 1.05 W/kg

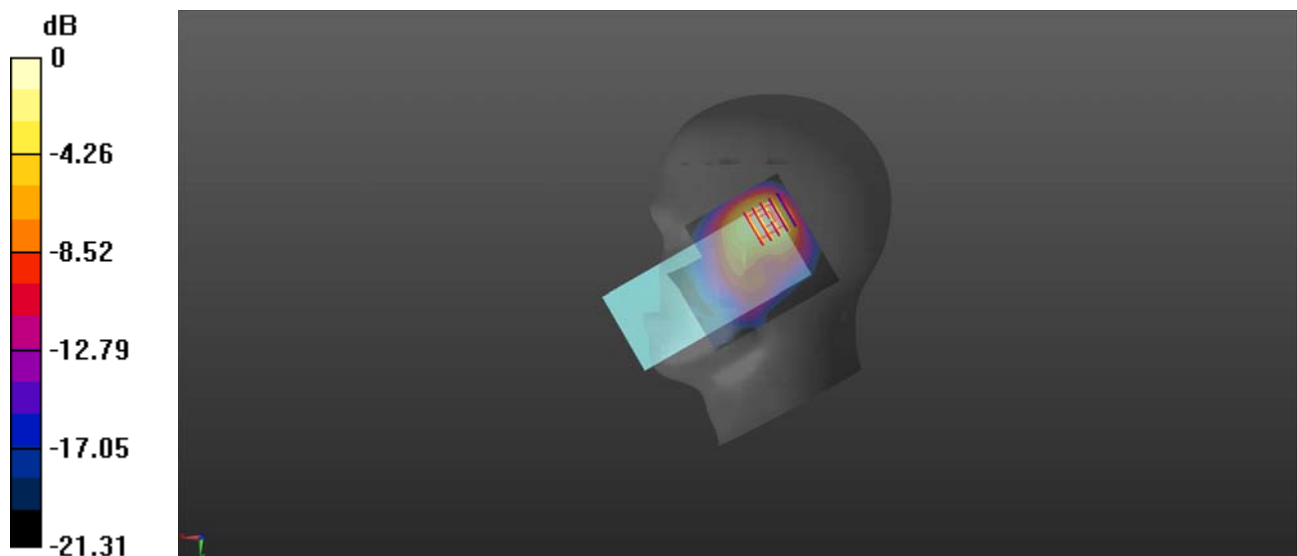
Ch18900/Zoom Scan (5x5x7)/Cube 0: Measurement grid: dx=8mm, dy=8mm, dz=5mm

Reference Value = 14.10 V/m; Power Drift = 0.05 dB

Peak SAR (extrapolated) = 1.36 W/kg

SAR(1 g) = 0.900 W/kg; SAR(10 g) = 0.618 W/kg

Maximum value of SAR (measured) = 1.04 W/kg



0 dB = 1.05 W/kg

LTE Band 4_20MHz_QPSK_1RB_0Offset_Right Cheek_Ch20175

Communication System: UID 0, LTE (0); Frequency: 1732.5 MHz; Duty Cycle: 1:1

Medium: HSL_1800 Medium parameters used: $f = 1733$ MHz; $\sigma = 1.366$ S/m; $\epsilon_r = 41.367$; $\rho = 1000$ kg/m³

Ambient Temperature : 23.2 °C; Liquid Temperature : 22.3 °C

DASY5 Configuration:

- Probe: EX3DV4 - SN7608; ConvF(8.26, 8.26, 8.26) @ 1800 MHz; Calibrated: 2022.01.12
- Sensor-Surface: 2mm (Mechanical Surface Detection)
- Electronics: DAE4 Sn1643; Calibrated: 2021.12.30
- Phantom: Twin-SAM; Type: QD 000 P41 Ax; Serial: 2020
- Measurement SW: DASY52, Version 52.10 (4); SEMCAD X Version 14.6.14 (7483)

Ch20175/Area Scan (71x81x1): Interpolated grid: dx=1.500 mm, dy=1.500 mm

Maximum value of SAR (interpolated) = 0.946 W/kg

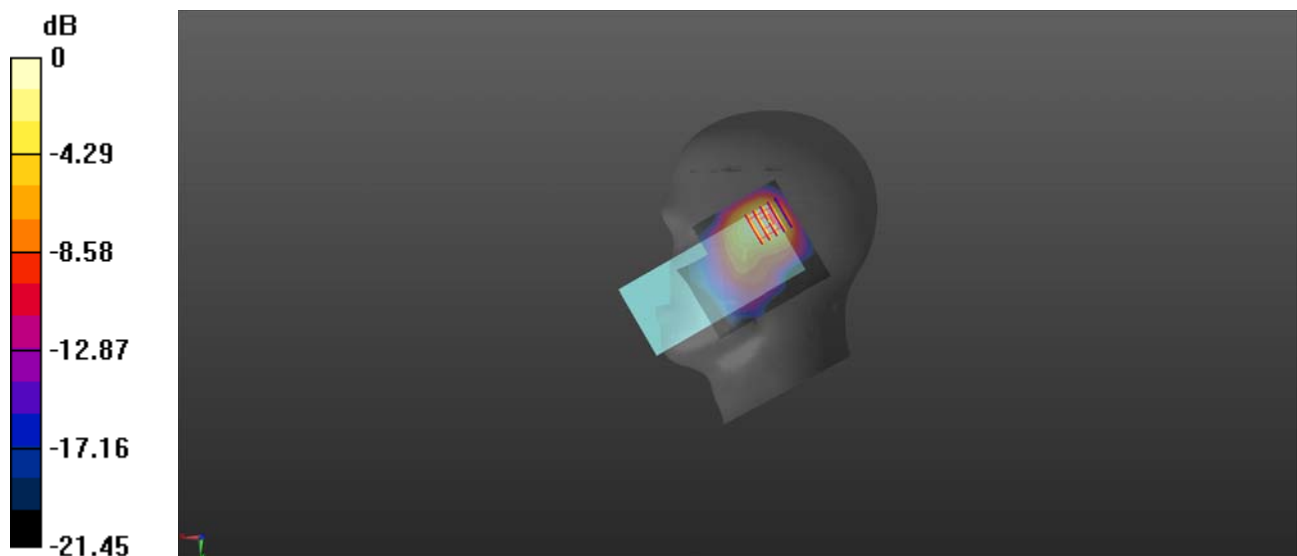
Ch20175/Zoom Scan (5x5x7)/Cube 0: Measurement grid: dx=8mm, dy=8mm, dz=5mm

Reference Value = 14.09 V/m; Power Drift = -0.02 dB

Peak SAR (extrapolated) = 1.17 W/kg

SAR(1 g) = 0.921 W/kg; SAR(10 g) = 0.550 W/kg

Maximum value of SAR (measured) = 0.919 W/kg



0 dB = 0.946 W/kg

LTE Band 5_10MHz_QPSK_1RB_0Offset_Right Cheek_Ch20525

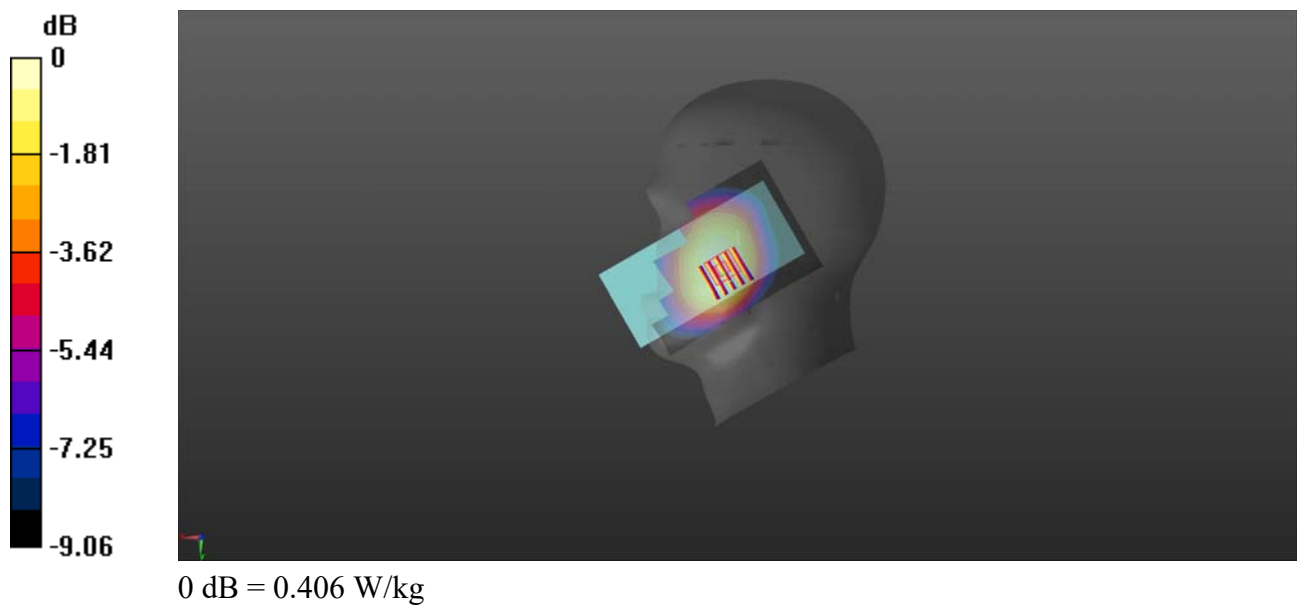
Communication System: UID 0, LTE (0); Frequency: 836.5 MHz; Duty Cycle: 1:1
Medium: HSL_900 Medium parameters used: $f = 836.5$ MHz; $\sigma = 0.943$ S/m; $\epsilon_r = 42.967$; $\rho = 1000$ kg/m³
Ambient Temperature : 23.2 °C; Liquid Temperature : 22.3 °C

DASY5 Configuration:

- Probe: EX3DV4 - SN7608; ConvF(9.81, 9.81, 9.81) @ 900 MHz; Calibrated: 2022.01.12
- Sensor-Surface: 2mm (Mechanical Surface Detection)
- Electronics: DAE4 Sn1643; Calibrated: 2021.12.30
- Phantom: Twin-SAM; Type: QD 000 P41 Ax; Serial: 2020
- Measurement SW: DASY52, Version 52.10 (4); SEMCAD X Version 14.6.14 (7483)

Ch20525/Area Scan (71x101x1): Interpolated grid: dx=1.500 mm, dy=1.500 mm
Maximum value of SAR (interpolated) = 0.406 W/kg

Ch20525/Zoom Scan (5x5x7)/Cube 0: Measurement grid: dx=8mm, dy=8mm, dz=5mm
Reference Value = 4.631 V/m; Power Drift = 0.05 dB
Peak SAR (extrapolated) = 0.451 W/kg
SAR(1 g) = 0.338 W/kg; SAR(10 g) = 0.260 W/kg
Maximum value of SAR (measured) = 0.390 W/kg



LTE Band 7_20MHz_QPSK_1RB_0Offset_Right Cheek_Ch21100

Communication System: UID 0, LTE (0); Frequency: 2535 MHz; Duty Cycle: 1:1

Medium: HSL_2600 Medium parameters used: $f = 2535$ MHz; $\sigma = 1.911$ S/m; $\epsilon_r = 38.489$; $\rho = 1000$ kg/m³

Ambient Temperature : 23.2 °C; Liquid Temperature : 22.2 °C

DASY5 Configuration:

- Probe: EX3DV4 - SN7608; ConvF(7.42, 7.42, 7.42) @ 2535 MHz; Calibrated: 2022.01.12
- Sensor-Surface: 2mm (Mechanical Surface Detection)
- Electronics: DAE4 Sn1643; Calibrated: 2021.12.30
- Phantom: Twin-SAM; Type: QD 000 P41 Ax; Serial: 2020
- Measurement SW: DASY52, Version 52.10 (4); SEMCAD X Version 14.6.14 (7483)

Ch21100/Area Scan (81x101x1): Interpolated grid: dx=1.200 mm, dy=1.200 mm

Maximum value of SAR (interpolated) = 0.289 W/kg

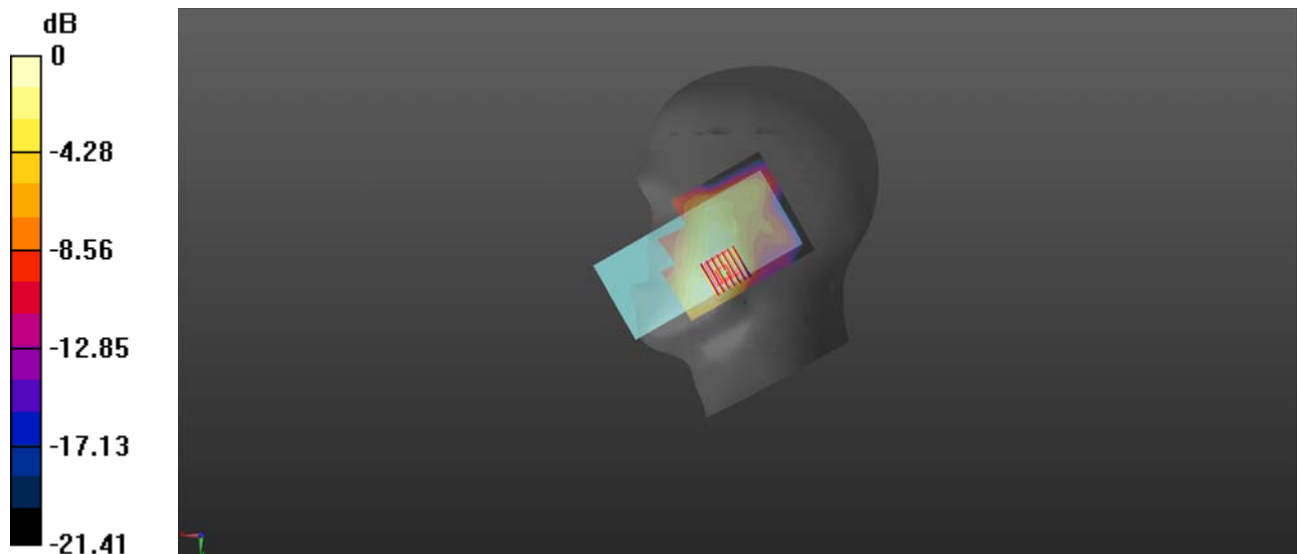
Ch21100/Zoom Scan (7x7x7)/Cube 0: Measurement grid: dx=5mm, dy=5mm, dz=5mm

Reference Value = 0.5400 V/m; Power Drift = 0.03 dB

Peak SAR (extrapolated) = 0.371 W/kg

SAR(1 g) = 0.215 W/kg; SAR(10 g) = 0.124 W/kg

Maximum value of SAR (measured) = 0.291 W/kg



0 dB = 0.289 W/kg

LTE Band 12_10MHz_QPSK_1RB_0Offset_Right Cheek_Ch23095

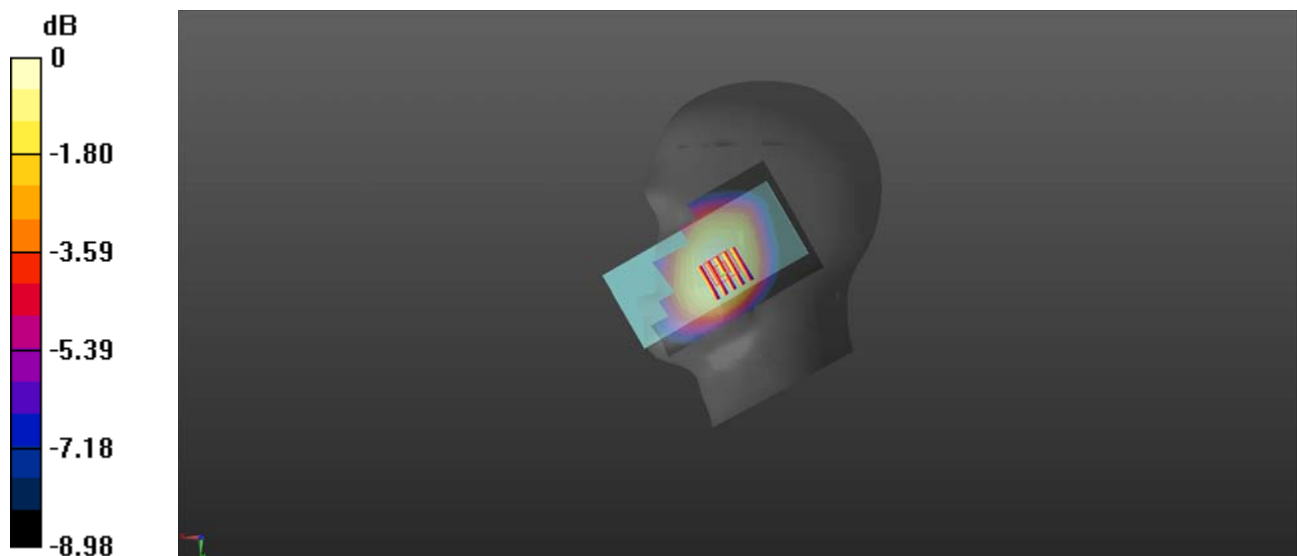
Communication System: UID 0, LTE (0); Frequency: 707.5 MHz; Duty Cycle: 1:1
Medium: HSL_750 Medium parameters used: $f = 707.5$ MHz; $\sigma = 0.848$ S/m; $\epsilon_r = 44.777$; $\rho = 1000$ kg/m³
Ambient Temperature : 23.2 °C; Liquid Temperature : 22.3 °C

DASY5 Configuration:

- Probe: EX3DV4 - SN7608; ConvF(10.2, 10.2, 10.2) @ 750 MHz; Calibrated: 2022.01.12
- Sensor-Surface: 2mm (Mechanical Surface Detection)
- Electronics: DAE4 Sn1643; Calibrated: 2021.12.30
- Phantom: Twin-SAM; Type: QD 000 P41 Ax; Serial: 2020
- Measurement SW: DASY52, Version 52.10 (4); SEMCAD X Version 14.6.14 (7483)

Ch23095/Area Scan (71x101x1): Interpolated grid: dx=1.500 mm, dy=1.500 mm
Maximum value of SAR (interpolated) = 0.180 W/kg

Ch23095/Zoom Scan (5x5x7)/Cube 0: Measurement grid: dx=8mm, dy=8mm, dz=5mm
Reference Value = 3.697 V/m; Power Drift = 0.03 dB
Peak SAR (extrapolated) = 0.194 W/kg
SAR(1 g) = 0.154 W/kg; SAR(10 g) = 0.120 W/kg
Maximum value of SAR (measured) = 0.176 W/kg



0 dB = 0.180 W/kg

LTE Band 17_10MHz_QPSK_1RB_0Offset_Right Cheek_Ch23790

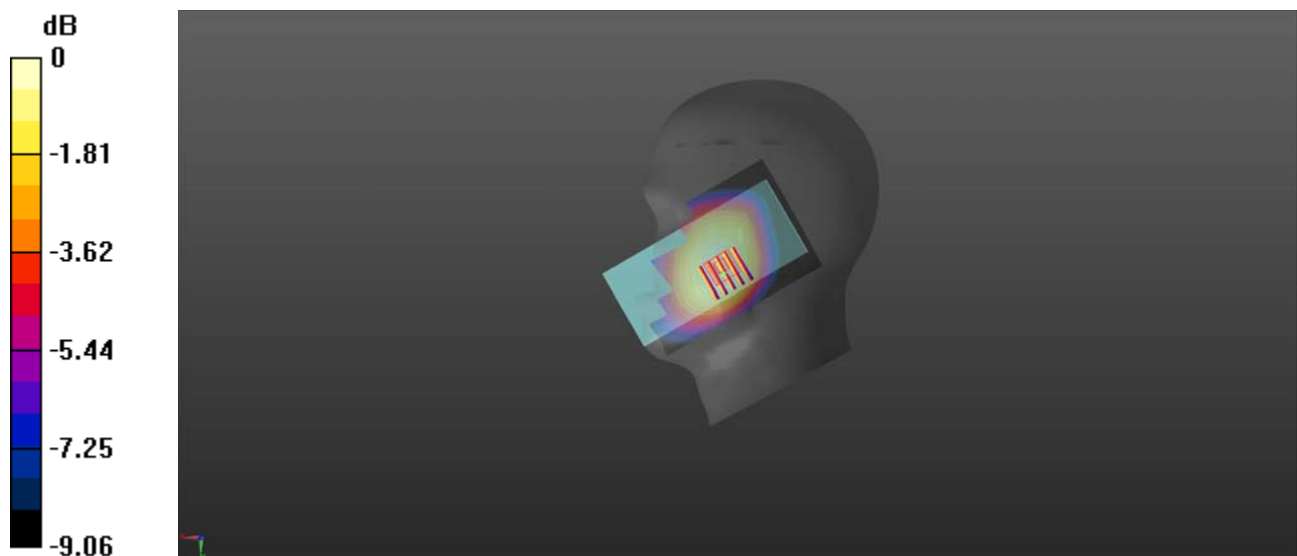
Communication System: UID 0, LTE (0); Frequency: 710 MHz; Duty Cycle: 1:1
Medium: HSL_750 Medium parameters used: $f = 710$ MHz; $\sigma = 0.85$ S/m; $\epsilon_r = 44.742$; $\rho = 1000$ kg/m³
Ambient Temperature : 23.2 °C; Liquid Temperature : 22.3 °C

DASY5 Configuration:

- Probe: EX3DV4 - SN7608; ConvF(10.2, 10.2, 10.2) @ 750 MHz; Calibrated: 2022.01.12
- Sensor-Surface: 2mm (Mechanical Surface Detection)
- Electronics: DAE4 Sn1643; Calibrated: 2021.12.30
- Phantom: Twin-SAM; Type: QD 000 P41 Ax; Serial: 2020
- Measurement SW: DASY52, Version 52.10 (4); SEMCAD X Version 14.6.14 (7483)

Ch23790/Area Scan (71x101x1): Interpolated grid: dx=1.500 mm, dy=1.500 mm
Maximum value of SAR (interpolated) = 0.191 W/kg

Ch23790/Zoom Scan (5x5x7)/Cube 0: Measurement grid: dx=8mm, dy=8mm, dz=5mm
Reference Value = 3.877 V/m; Power Drift = 0.01 dB
Peak SAR (extrapolated) = 0.202 W/kg
SAR(1 g) = 0.158 W/kg; SAR(10 g) = 0.123 W/kg
Maximum value of SAR (measured) = 0.180 W/kg



0 dB = 0.191 W/kg

LTE Band 66_20MHz_QPSK_1RB_0Offset_Right Cheek_Ch132572

Communication System: UID 0, LTE (0); Frequency: 1770 MHz; Duty Cycle: 1:1

Medium: HSL_1800 Medium parameters used: $f = 1770$ MHz; $\sigma = 1.413$ S/m; $\epsilon_r = 41.194$; $\rho = 1000$ kg/m³

Ambient Temperature : 23.2 °C; Liquid Temperature : 22.3 °C

DASY5 Configuration:

- Probe: EX3DV4 - SN7608; ConvF(8.26, 8.26, 8.26) @ 1800 MHz; Calibrated: 2022.01.12
- Sensor-Surface: 2mm (Mechanical Surface Detection)
- Electronics: DAE4 Sn1643; Calibrated: 2021.12.30
- Phantom: Twin-SAM; Type: QD 000 P41 Ax; Serial: 2020
- Measurement SW: DASY52, Version 52.10 (4); SEMCAD X Version 14.6.14 (7483)

Ch132572/Area Scan (71x81x1): Interpolated grid: dx=1.500 mm, dy=1.500 mm

Maximum value of SAR (interpolated) = 1.56 W/kg

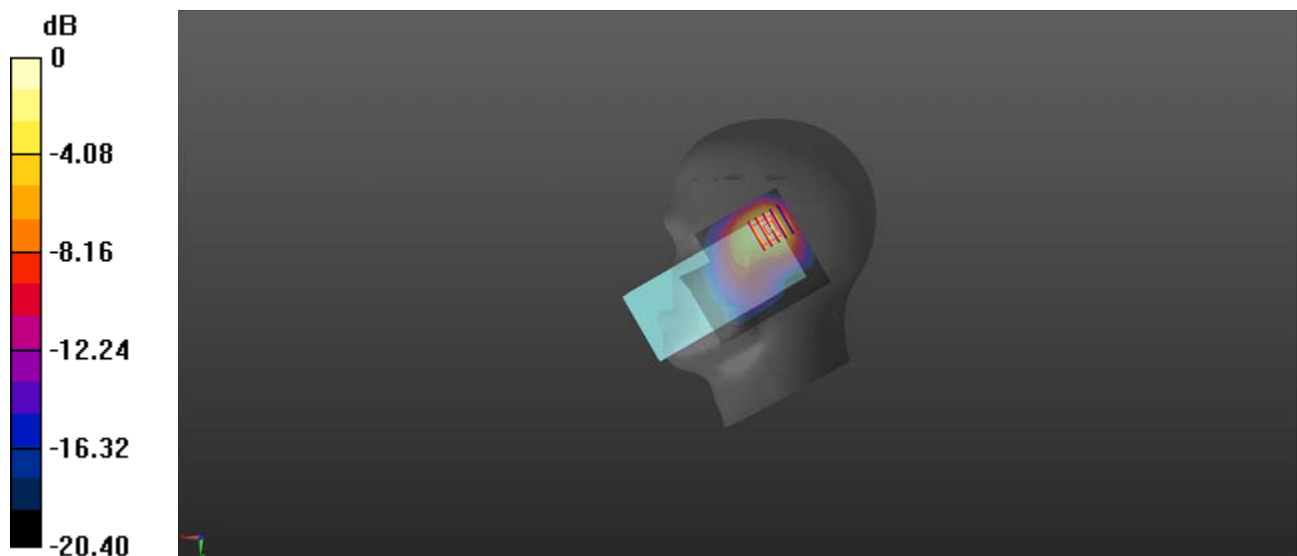
Ch132572/Zoom Scan (5x5x7)/Cube 0: Measurement grid: dx=8mm, dy=8mm, dz=5mm

Reference Value = 16.83 V/m; Power Drift = -0.05 dB

Peak SAR (extrapolated) = 1.74 W/kg

SAR(1 g) = 1.02 W/kg; SAR(10 g) = 0.583 W/kg

Maximum value of SAR (measured) = 1.34 W/kg



0 dB = 1.56 W/kg

WLAN 2.4GHz_802.11b 1Mbps_Left Cheek_Ch7

Communication System: UID 0, WLAN 2.4GHz 802.11b (0); Frequency: 2442 MHz; Duty Cycle: 1:1
Medium: HSL_2450 Medium parameters used: $f = 2442$ MHz; $\sigma = 1.808$ S/m; $\epsilon_r = 38.829$; $\rho = 1000$ kg/m³

Ambient Temperature : 23.2 °C; Liquid Temperature : 22.3 °C

DASY5 Configuration:

- Probe: EX3DV4 - SN7608; ConvF(7.42, 7.42, 7.42) @ 2450 MHz; Calibrated: 2022.01.12
- Sensor-Surface: 2mm (Mechanical Surface Detection)
- Electronics: DAE4 Sn1643; Calibrated: 2021.12.30
- Phantom: Twin-SAM; Type: QD 000 P41 Ax; Serial: 2020
- Measurement SW: DASY52, Version 52.10 (4); SEMCAD X Version 14.6.14 (7483)

Ch7/Area Scan (81x101x1): Interpolated grid: dx=1.200 mm, dy=1.200 mm

Maximum value of SAR (interpolated) = 0.417 W/kg

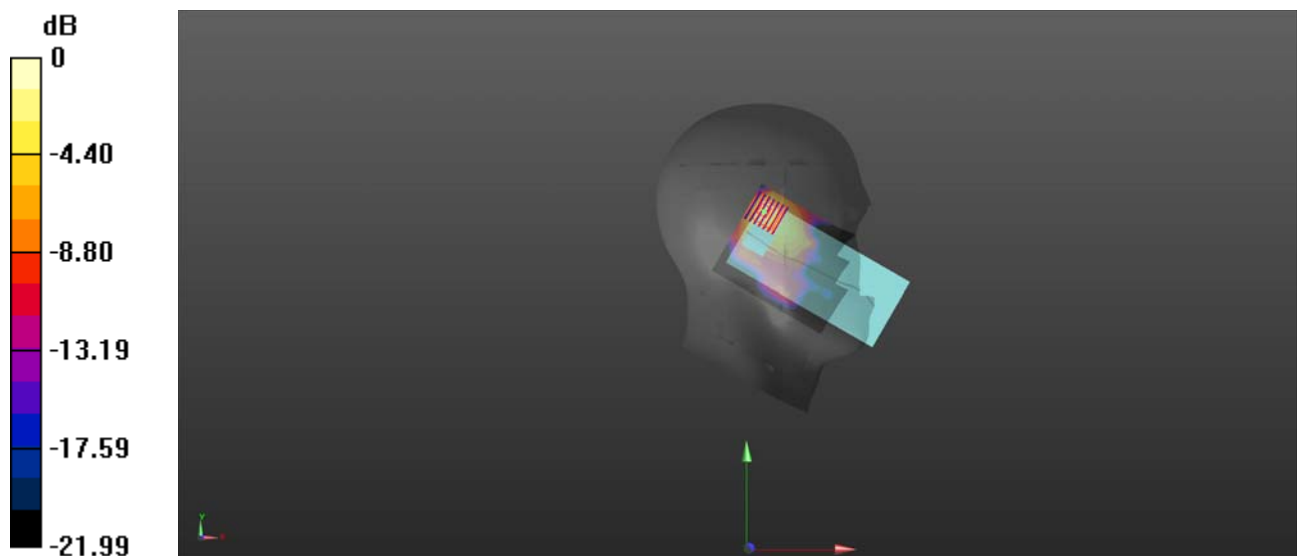
Ch7/Zoom Scan (7x7x7)/Cube 0: Measurement grid: dx=5mm, dy=5mm, dz=5mm

Reference Value = 5.993 V/m; Power Drift = 0.02 dB

Peak SAR (extrapolated) = 0.596 W/kg

SAR(1 g) = 0.273 W/kg; SAR(10 g) = 0.135 W/kg

Maximum value of SAR (measured) = 0.404 W/kg



0 dB = 0.417 W/kg

GSM850_GPRS(2 TX slots)_Back Side_10mm_Ch189

Communication System: UID 0, GSM850(class 10) (0); Frequency: 836.4 MHz; Duty Cycle: 1:4.15
Medium: HSL_900 Medium parameters used: $f = 836.4$ MHz; $\sigma = 0.943$ S/m; $\epsilon_r = 42.978$; $\rho = 1000$ kg/m³

Ambient Temperature : 23.2 °C; Liquid Temperature : 22.3 °C

DASY5 Configuration:

- Probe: EX3DV4 - SN7608; ConvF(9.81, 9.81, 9.81) @ 836.4 MHz; Calibrated: 2022.01.12
- Sensor-Surface: 2mm (Mechanical Surface Detection)
- Electronics: DAE4 Sn1643; Calibrated: 2021.12.30
- Phantom: Twin-SAM; Type: QD 000 P41 Ax; Serial: 2020
- Measurement SW: DASY52, Version 52.10 (4); SEMCAD X Version 14.6.14 (7483)

Ch189/Area Scan (71x121x1): Interpolated grid: dx=1.500 mm, dy=1.500 mm

Maximum value of SAR (interpolated) = 0.289 W/kg

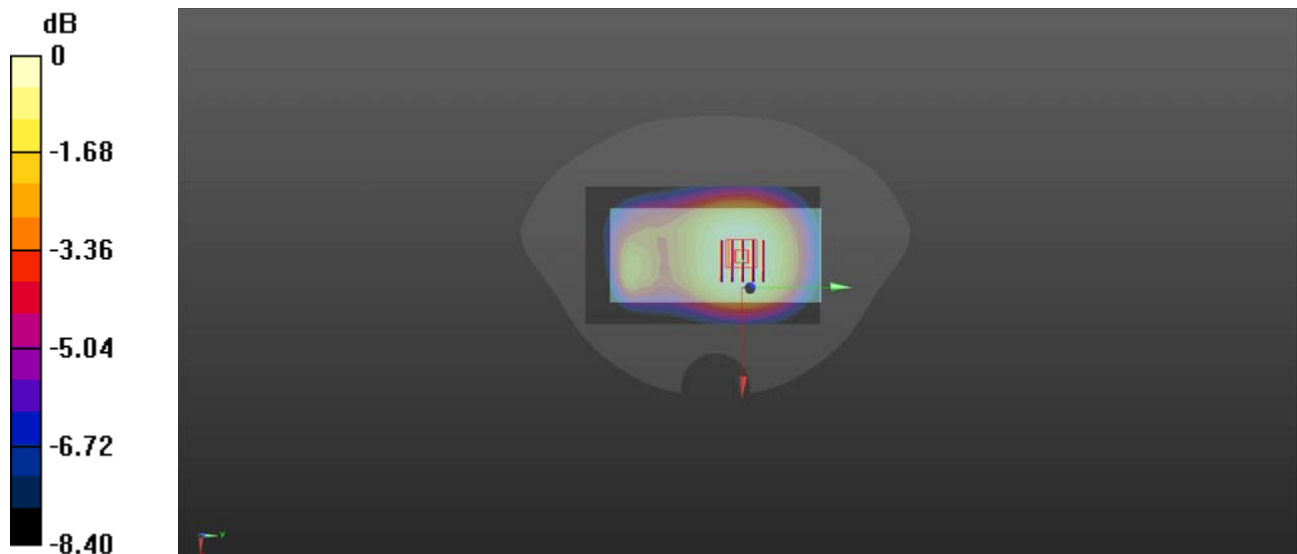
Ch189/Zoom Scan (5x5x7)/Cube 0: Measurement grid: dx=8mm, dy=8mm, dz=5mm

Reference Value = 15.60 V/m; Power Drift = -0.04 dB

Peak SAR (extrapolated) = 0.327 W/kg

SAR(1 g) = 0.247 W/kg; SAR(10 g) = 0.187 W/kg

Maximum value of SAR (measured) = 0.290 W/kg



0 dB = 0.289 W/kg

GSM1900_GPRS(3 TX slots)_Back Side_10mm_Ch661

Communication System: UID 0, GSM1900(class 11) (0); Frequency: 1880 MHz; Duty Cycle: 1:2.66993

Medium: HSL_2000 Medium parameters used: $f = 1880$ MHz; $\sigma = 1.321$ S/m; $\epsilon_r = 39.882$; $\rho = 1000$ kg/m³

Ambient Temperature : 23.2 °C; Liquid Temperature : 22.4 °C

DASY5 Configuration:

- Probe: EX3DV4 - SN7608; ConvF(7.99, 7.99, 7.99) @ 1880 MHz; Calibrated: 2022.01.12
- Sensor-Surface: 2mm (Mechanical Surface Detection)
- Electronics: DAE4 Sn1643; Calibrated: 2021.12.30
- Phantom: Twin-SAM; Type: QD 000 P41 Ax; Serial: 2020
- Measurement SW: DASY52, Version 52.10 (4); SEMCAD X Version 14.6.14 (7483)

Ch661/Area Scan (71x81x1): Interpolated grid: dx=1.500 mm, dy=1.500 mm

Maximum value of SAR (interpolated) = 0.833 W/kg

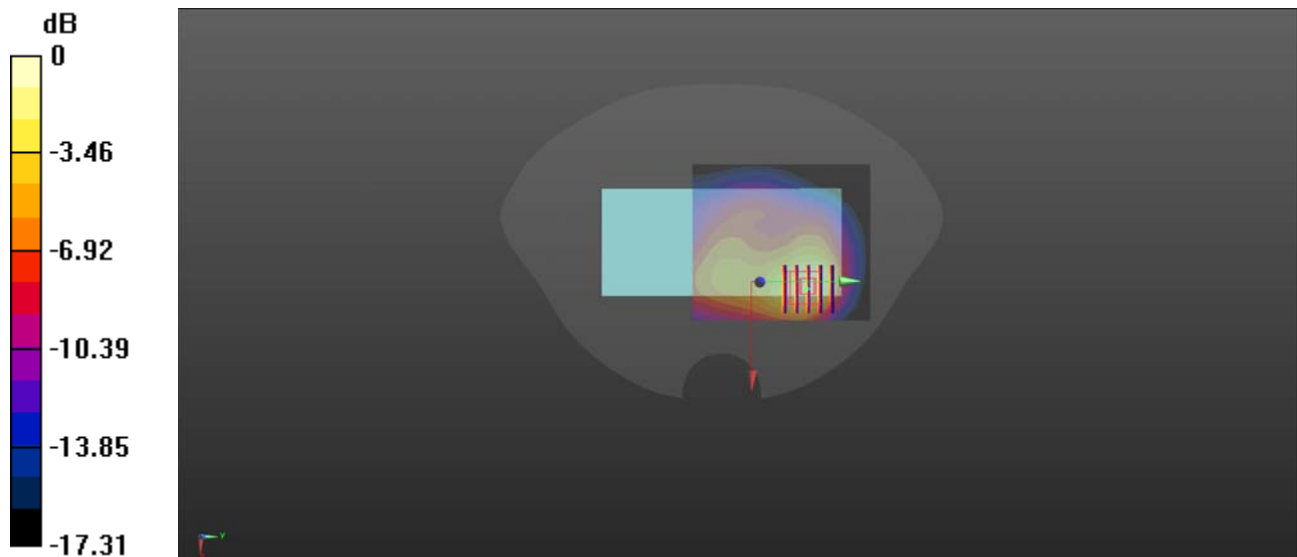
Ch661/Zoom Scan (5x5x7)/Cube 0: Measurement grid: dx=8mm, dy=8mm, dz=5mm

Reference Value = 10.85 V/m; Power Drift = -0.03 dB

Peak SAR (extrapolated) = 1.02 W/kg

SAR(1 g) = 0.570 W/kg; SAR(10 g) = 0.315 W/kg

Maximum value of SAR (measured) = 0.784 W/kg



0 dB = 0.833 W/kg

WCDMA Band II_RMC 12.2Kbps_Back Side_10mm_Ch9400

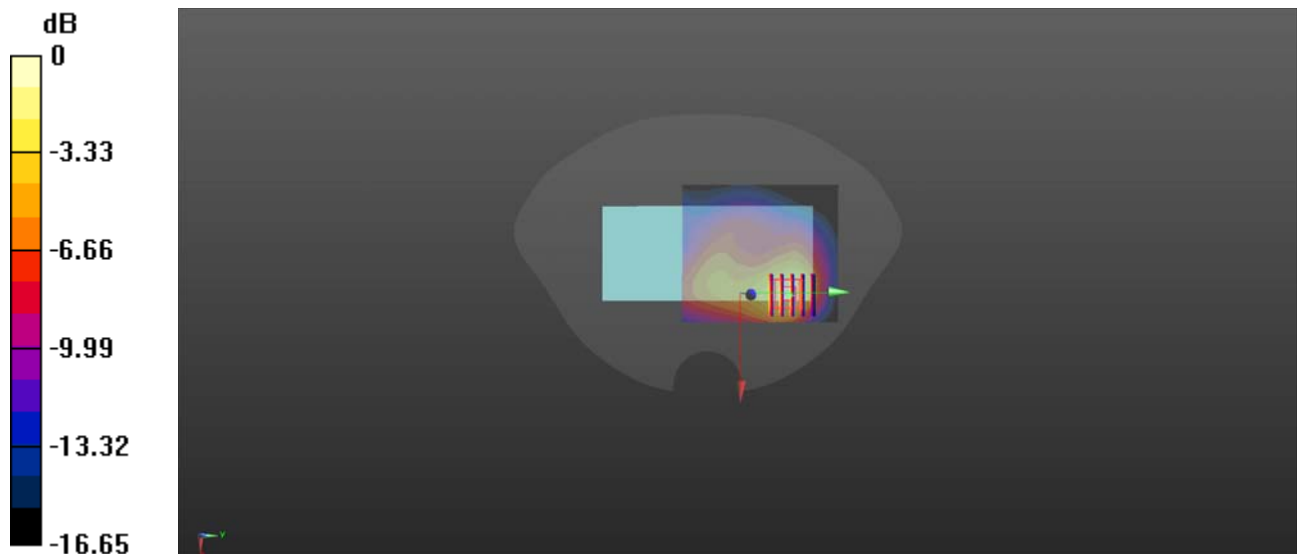
Communication System: UID 0, UMTS-FDD (0); Frequency: 1880 MHz; Duty Cycle: 1:1
Medium: HSL_2000 Medium parameters used: $f = 1880$ MHz; $\sigma = 1.321$ S/m; $\epsilon_r = 39.882$; $\rho = 1000$ kg/m³
Ambient Temperature : 23.2 °C; Liquid Temperature : 22.4 °C

DASY5 Configuration:

- Probe: EX3DV4 - SN7608; ConvF(7.99, 7.99, 7.99) @ 1880 MHz; Calibrated: 2022.01.12
- Sensor-Surface: 2mm (Mechanical Surface Detection)
- Electronics: DAE4 Sn1643; Calibrated: 2021.12.30
- Phantom: Twin-SAM; Type: QD 000 P41 Ax; Serial: 2020
- Measurement SW: DASY52, Version 52.10 (4); SEMCAD X Version 14.6.14 (7483)

Ch9400/Area Scan (71x81x1): Interpolated grid: dx=1.500 mm, dy=1.500 mm
Maximum value of SAR (interpolated) = 0.325 W/kg

Ch9400/Zoom Scan (5x5x7)/Cube 0: Measurement grid: dx=8mm, dy=8mm, dz=5mm
Reference Value = 6.334 V/m; Power Drift = 0.05 dB
Peak SAR (extrapolated) = 0.382 W/kg
SAR(1 g) = 0.214 W/kg; SAR(10 g) = 0.119 W/kg
Maximum value of SAR (measured) = 0.297 W/kg



0 dB = 0.325 W/kg

WCDMA Band IV_RMC 12.2Kbps_Back Side_10mm_Ch1413

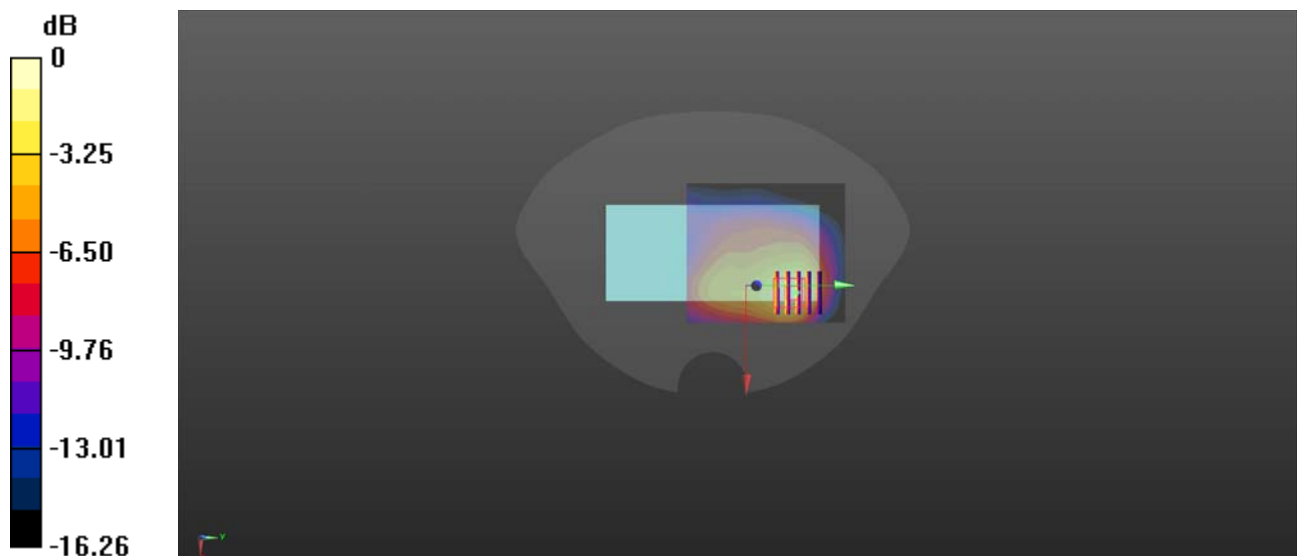
Communication System: UID 0, UMTS-FDD (0); Frequency: 1732.6 MHz; Duty Cycle: 1:1
Medium: HSL_1800 Medium parameters used: $f = 1733$ MHz; $\sigma = 1.366$ S/m; $\epsilon_r = 41.367$; $\rho = 1000$ kg/m³
Ambient Temperature : 23.2 °C; Liquid Temperature : 22.3 °C

DASY5 Configuration:

- Probe: EX3DV4 - SN7608; ConvF(8.26, 8.26, 8.26) @ 1800 MHz; Calibrated: 2022.01.12
- Sensor-Surface: 2mm (Mechanical Surface Detection)
- Electronics: DAE4 Sn1643; Calibrated: 2021.12.30
- Phantom: Twin-SAM; Type: QD 000 P41 Ax; Serial: 2020
- Measurement SW: DASY52, Version 52.10 (4); SEMCAD X Version 14.6.14 (7483)

Ch1413/Area Scan (71x81x1): Interpolated grid: dx=1.500 mm, dy=1.500 mm
Maximum value of SAR (interpolated) = 0.383 W/kg

Ch1413/Zoom Scan (5x5x7)/Cube 0: Measurement grid: dx=8mm, dy=8mm, dz=5mm
Reference Value = 6.685 V/m; Power Drift = 0.04 dB
Peak SAR (extrapolated) = 0.443 W/kg
SAR(1 g) = 0.259 W/kg; SAR(10 g) = 0.150 W/kg
Maximum value of SAR (measured) = 0.350 W/kg



0 dB = 0.383 W/kg

WCDMA Band V_RMC 12.2Kbps_Back Side_10mm_Ch4182

Communication System: UID 0, UMTS-FDD (0); Frequency: 836.4 MHz; Duty Cycle: 1:1
Medium: HSL_900 Medium parameters used: $f = 836.4$ MHz; $\sigma = 0.943$ S/m; $\epsilon_r = 42.978$; $\rho = 1000$ kg/m³

Ambient Temperature : 23.2 °C; Liquid Temperature : 22.3 °C

DASY5 Configuration:

- Probe: EX3DV4 - SN7608; ConvF(9.81, 9.81, 9.81) @ 1745 MHz; Calibrated: 2022.01.12
- Sensor-Surface: 2mm (Mechanical Surface Detection)
- Electronics: DAE4 Sn1643; Calibrated: 2021.12.30
- Phantom: Twin-SAM; Type: QD 000 P41 Ax; Serial: 2020
- Measurement SW: DASY52, Version 52.10 (4); SEMCAD X Version 14.6.14 (7483)

Ch4182/Area Scan (71x121x1): Interpolated grid: dx=1.500 mm, dy=1.500 mm

Maximum value of SAR (interpolated) = 0.459 W/kg

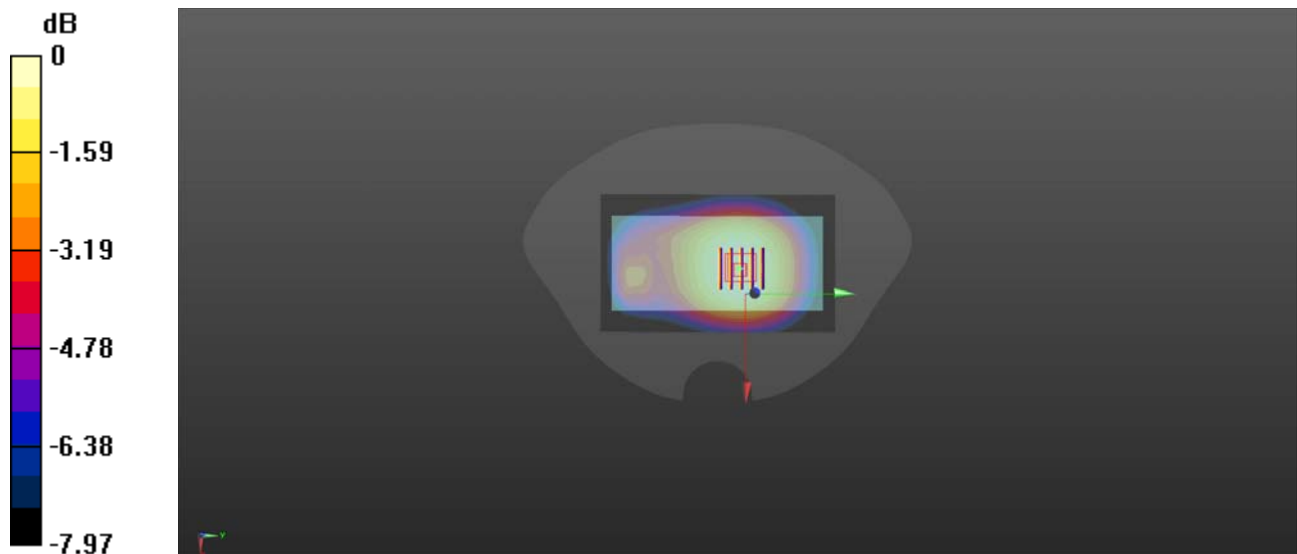
Ch4182/Zoom Scan (5x5x7)/Cube 0: Measurement grid: dx=8mm, dy=8mm, dz=5mm

Reference Value = 20.14 V/m; Power Drift = -0.03 dB

Peak SAR (extrapolated) = 0.508 W/kg

SAR(1 g) = 0.394 W/kg; SAR(10 g) = 0.299 W/kg

Maximum value of SAR (measured) = 0.457 W/kg



0 dB = 0.459 W/kg

LTE Band 2_20MHz_QPSK_1RB_0Offset_Back Side_10mm_Ch18900

Communication System: UID 0, LTE (0); Frequency: 1880 MHz; Duty Cycle: 1:1

Medium: HSL_2000 Medium parameters used: $f = 1880$ MHz; $\sigma = 1.321$ S/m; $\epsilon_r = 39.882$; $\rho = 1000$ kg/m³

Ambient Temperature : 23.2 °C; Liquid Temperature : 22.4 °C

DASY5 Configuration:

- Probe: EX3DV4 - SN7608; ConvF(7.99, 7.99, 7.99) @ 1880 MHz; Calibrated: 2022.01.12
- Sensor-Surface: 2mm (Mechanical Surface Detection)
- Electronics: DAE4 Sn1643; Calibrated: 2021.12.30
- Phantom: Twin-SAM; Type: QD 000 P41 Ax; Serial: 2020
- Measurement SW: DASY52, Version 52.10 (4); SEMCAD X Version 14.6.14 (7483)

Ch18900/Area Scan (71x81x1): Interpolated grid: dx=1.500 mm, dy=1.500 mm

Maximum value of SAR (interpolated) = 0.271 W/kg

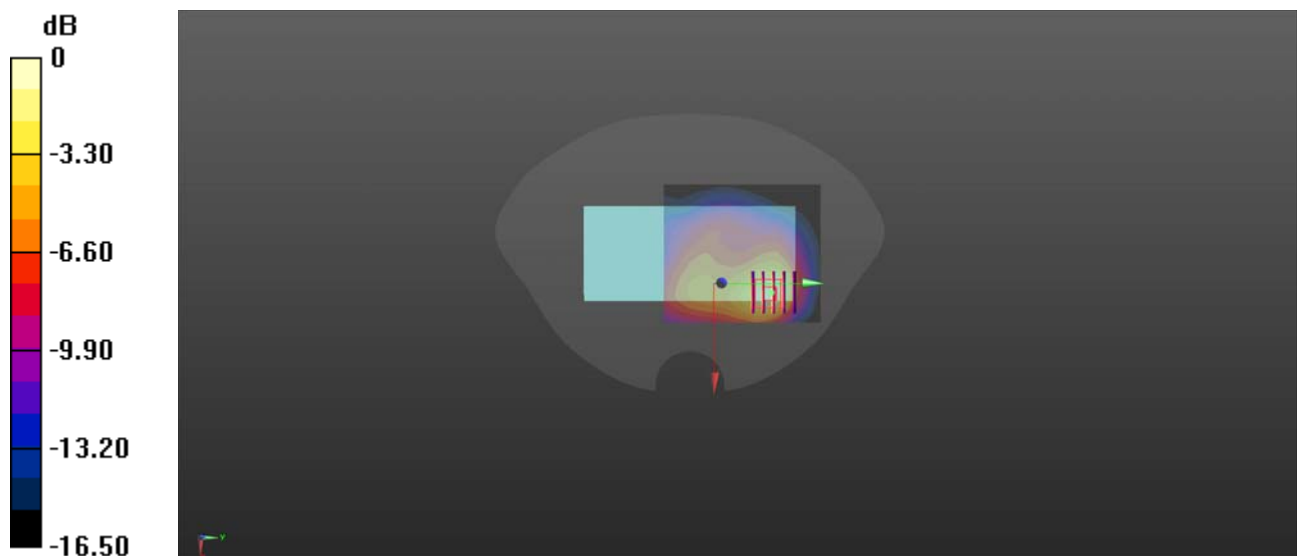
Ch18900/Zoom Scan (5x5x7)/Cube 0: Measurement grid: dx=8mm, dy=8mm, dz=5mm

Reference Value = 5.698 V/m; Power Drift = 0.04 dB

Peak SAR (extrapolated) = 0.329 W/kg

SAR(1 g) = 0.179 W/kg; SAR(10 g) = 0.098 W/kg

Maximum value of SAR (measured) = 0.251 W/kg



LTE Band 4_20MHz_QPSK_1RB_0Offset_Back Side_10mm_Ch20175

Communication System: UID 0, LTE (0); Frequency: 1732.5 MHz; Duty Cycle: 1:1

Medium: HSL_1800 Medium parameters used: $f = 1733$ MHz; $\sigma = 1.366$ S/m; $\epsilon_r = 41.367$; $\rho = 1000$ kg/m³

Ambient Temperature : 23.2 °C; Liquid Temperature : 22.3 °C

DASY5 Configuration:

- Probe: EX3DV4 - SN7608; ConvF(8.26, 8.26, 8.26) @ 1732.5 MHz; Calibrated: 2022.01.12
- Sensor-Surface: 2mm (Mechanical Surface Detection)
- Electronics: DAE4 Sn1643; Calibrated: 2021.12.30
- Phantom: Twin-SAM; Type: QD 000 P41 Ax; Serial: 2020
- Measurement SW: DASY52, Version 52.10 (4); SEMCAD X Version 14.6.14 (7483)

Ch20175/Area Scan (71x81x1): Interpolated grid: dx=1.500 mm, dy=1.500 mm

Maximum value of SAR (interpolated) = 0.225 W/kg

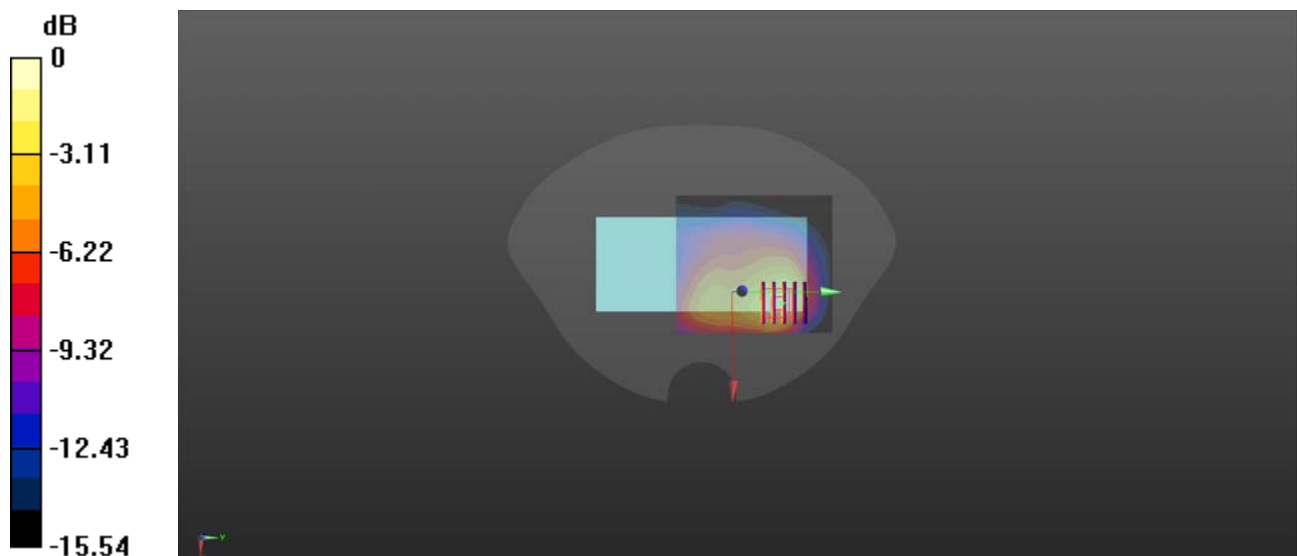
Ch20175/Zoom Scan (5x5x7)/Cube 0: Measurement grid: dx=8mm, dy=8mm, dz=5mm

Reference Value = 4.920 V/m; Power Drift = 0.05 dB

Peak SAR (extrapolated) = 0.264 W/kg

SAR(1 g) = 0.149 W/kg; SAR(10 g) = 0.085 W/kg

Maximum value of SAR (measured) = 0.205 W/kg



0 dB = 0.225 W/kg

LTE Band 5_10MHz_QPSK_1RB_0Offset_Back Side_10mm_Ch20525

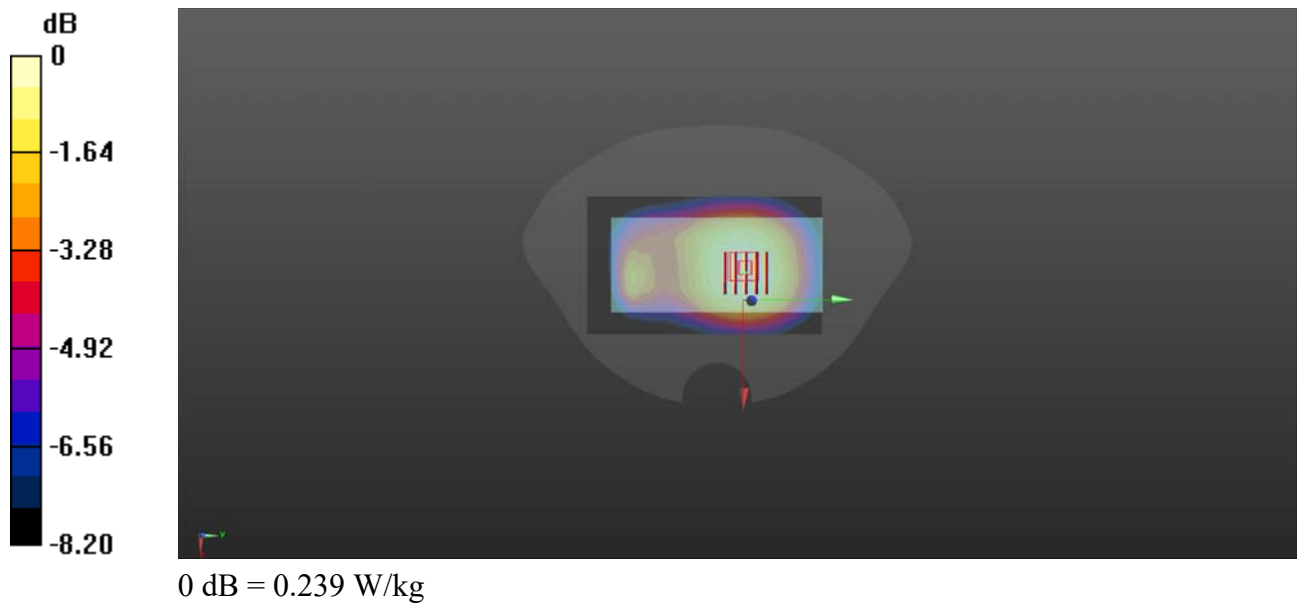
Communication System: UID 0, LTE (0); Frequency: 836.5 MHz; Duty Cycle: 1:1
Medium: HSL_900 Medium parameters used: $f = 836.5$ MHz; $\sigma = 0.943$ S/m; $\epsilon_r = 42.967$; $\rho = 1000$ kg/m³
Ambient Temperature : 23.2 °C; Liquid Temperature : 22.3 °C

DASY5 Configuration:

- Probe: EX3DV4 - SN7608; ConvF(9.81, 9.81, 9.81) @ 836.5 MHz; Calibrated: 2022.01.12
- Sensor-Surface: 2mm (Mechanical Surface Detection)
- Electronics: DAE4 Sn1643; Calibrated: 2021.12.30
- Phantom: Twin-SAM; Type: QD 000 P41 Ax; Serial: 2020
- Measurement SW: DASY52, Version 52.10 (4); SEMCAD X Version 14.6.14 (7483)

Ch20525/Area Scan (71x121x1): Interpolated grid: dx=1.500 mm, dy=1.500 mm
Maximum value of SAR (interpolated) = 0.239 W/kg

Ch20525/Zoom Scan (5x5x7)/Cube 0: Measurement grid: dx=8mm, dy=8mm, dz=5mm
Reference Value = 14.36 V/m; Power Drift = -0.06 dB
Peak SAR (extrapolated) = 0.257 W/kg
SAR(1 g) = 0.199 W/kg; SAR(10 g) = 0.151 W/kg
Maximum value of SAR (measured) = 0.230 W/kg



LTE Band 7_20MHz_QPSK_1RB_0Offset_Back Side_10mm_Ch21100

Communication System: UID 0, LTE (0); Frequency: 2535 MHz; Duty Cycle: 1:1

Medium: HSL_2600 Medium parameters used: $f = 2535$ MHz; $\sigma = 1.911$ S/m; $\epsilon_r = 38.489$; $\rho = 1000$ kg/m³

Ambient Temperature : 23.2 °C; Liquid Temperature : 22.2 °C

DASY5 Configuration:

- Probe: EX3DV4 - SN7608; ConvF(7.08, 7.08, 7.08) @ 2535 MHz; Calibrated: 2022.01.12
- Sensor-Surface: 2mm (Mechanical Surface Detection)
- Electronics: DAE4 Sn1643; Calibrated: 2021.12.30
- Phantom: Twin-SAM; Type: QD 000 P41 Ax; Serial: 2020
- Measurement SW: DASY52, Version 52.10 (4); SEMCAD X Version 14.6.14 (7483)

Ch21100/Area Scan (81x101x1): Interpolated grid: dx=1.200 mm, dy=1.200 mm

Maximum value of SAR (interpolated) = 1.27 W/kg

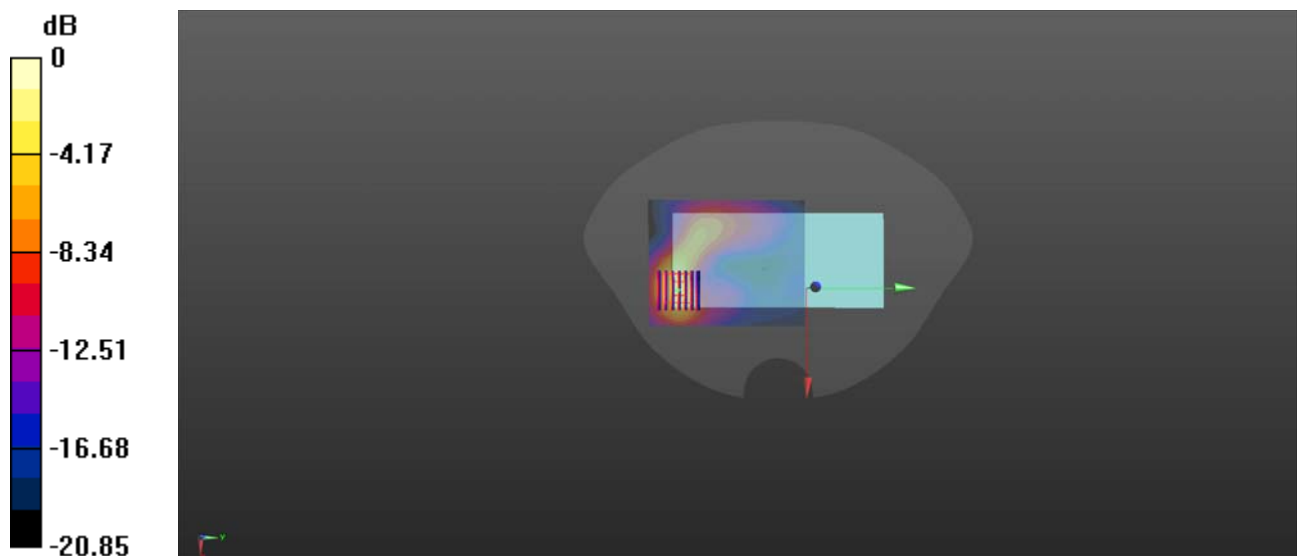
Ch21100/Zoom Scan (7x7x7)/Cube 0: Measurement grid: dx=5mm, dy=5mm, dz=5mm

Reference Value = 2.292 V/m; Power Drift = 0.03 dB

Peak SAR (extrapolated) = 1.65 W/kg

SAR(1 g) = 0.802 W/kg; SAR(10 g) = 0.362 W/kg

Maximum value of SAR (measured) = 1.19 W/kg



0 dB = 1.27 W/kg

LTE Band 12_10MHz_QPSK_1RB_0Offset_Front Side_10mm_Ch23095

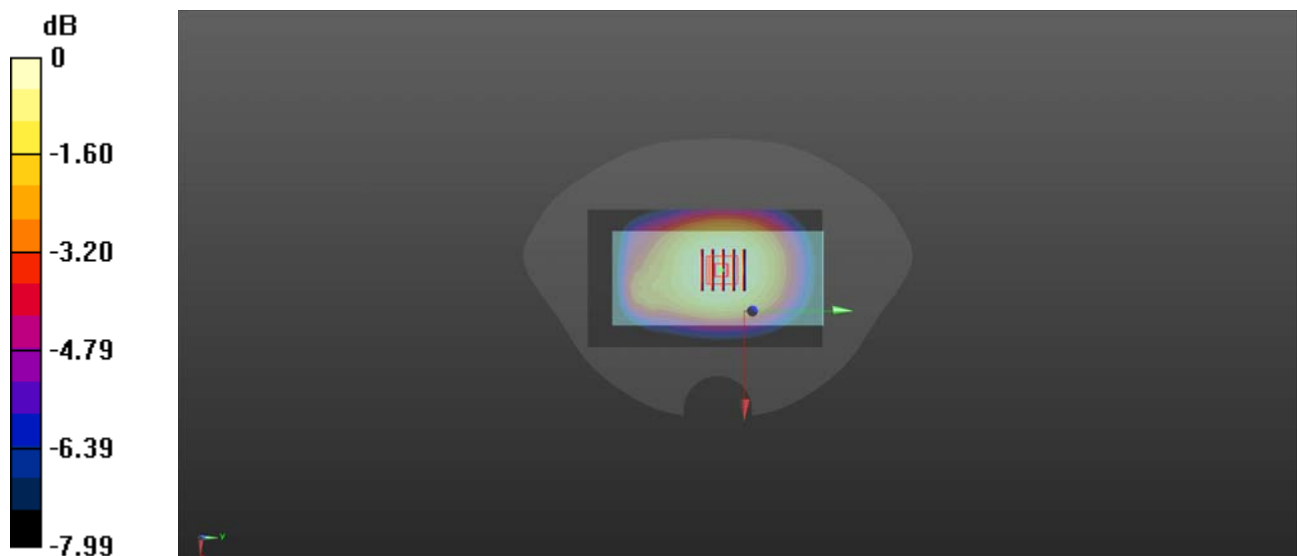
Communication System: UID 0, LTE (0); Frequency: 707.5 MHz; Duty Cycle: 1:1
Medium: HSL_750 Medium parameters used: $f = 707.5$ MHz; $\sigma = 0.848$ S/m; $\epsilon_r = 44.777$; $\rho = 1000$ kg/m³
Ambient Temperature : 23.2 °C; Liquid Temperature : 22.3 °C

DASY5 Configuration:

- Probe: EX3DV4 - SN7608; ConvF(10.2, 10.2, 10.2) @ 750 MHz; Calibrated: 2022.01.12
- Sensor-Surface: 2mm (Mechanical Surface Detection)
- Electronics: DAE4 Sn1643; Calibrated: 2021.12.30
- Phantom: Twin-SAM; Type: QD 000 P41 Ax; Serial: 2020
- Measurement SW: DASY52, Version 52.10 (4); SEMCAD X Version 14.6.14 (7483)

Ch23095/Area Scan (71x121x1): Interpolated grid: dx=1.500 mm, dy=1.500 mm
Maximum value of SAR (interpolated) = 0.157 W/kg

Ch23095/Zoom Scan (5x5x7)/Cube 0: Measurement grid: dx=8mm, dy=8mm, dz=5mm
Reference Value = 12.70 V/m; Power Drift = -0.05 dB
Peak SAR (extrapolated) = 0.171 W/kg
SAR(1 g) = 0.153 W/kg; SAR(10 g) = 0.117 W/kg
Maximum value of SAR (measured) = 0.150 W/kg



0 dB = 0.157 W/kg

LTE Band 17_10MHz_QPSK_1RB_0Offset_Back Side_10mm_Ch23790

Communication System: UID 0, LTE (0); Frequency: 710 MHz; Duty Cycle: 1:1

Medium: HSL_750 Medium parameters used: $f = 710$ MHz; $\sigma = 0.85$ S/m; $\epsilon_r = 44.742$; $\rho = 1000$ kg/m³

Ambient Temperature : 23.2 °C; Liquid Temperature : 22.3 °C

DASY5 Configuration:

- Probe: EX3DV4 - SN7608; ConvF(10.2, 10.2, 10.2) @ 710 MHz; Calibrated: 2022.01.12
- Sensor-Surface: 2mm (Mechanical Surface Detection)
- Electronics: DAE4 Sn1643; Calibrated: 2021.12.30
- Phantom: Twin-SAM; Type: QD 000 P41 Ax; Serial: 2020
- Measurement SW: DASY52, Version 52.10 (4); SEMCAD X Version 14.6.14 (7483)

Ch23790/Area Scan (71x121x1): Interpolated grid: dx=1.500 mm, dy=1.500 mm

Maximum value of SAR (interpolated) = 0.147 W/kg

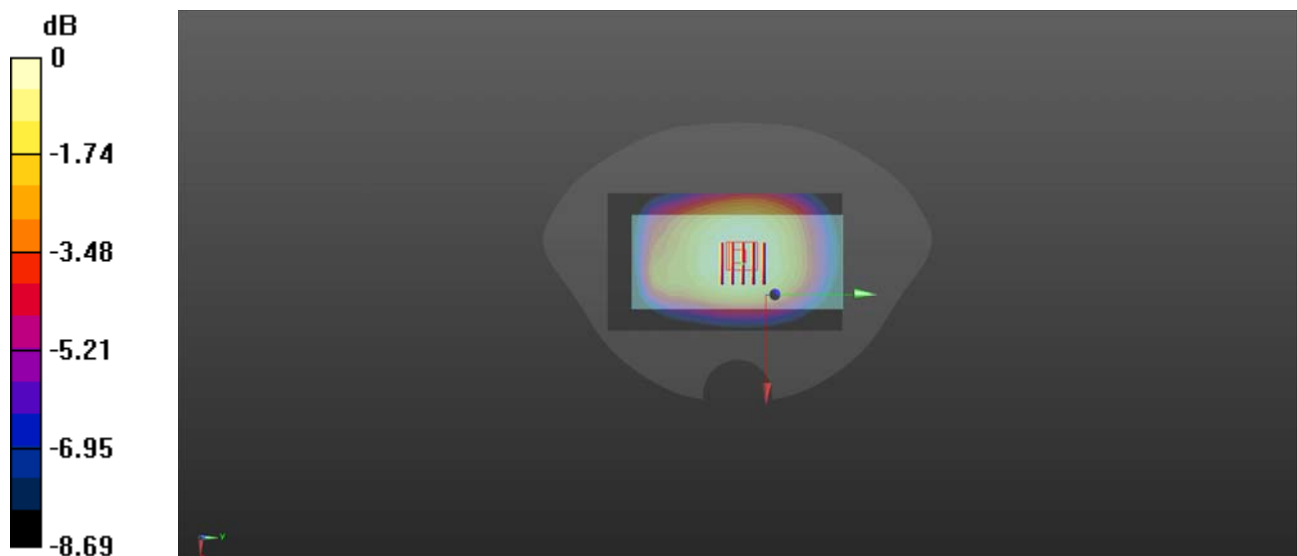
Ch23790/Zoom Scan (5x5x7)/Cube 0: Measurement grid: dx=8mm, dy=8mm, dz=5mm

Reference Value = 12.70 V/m; Power Drift = -0.02 dB

Peak SAR (extrapolated) = 0.174 W/kg

SAR(1 g) = 0.223 W/kg; SAR(10 g) = 0.168 W/kg

Maximum value of SAR (measured) = 0.153 W/kg



0 dB = 0.147 W/kg

LTE Band 66_20MHz_QPSK_1RB_0Offset_Back Side_10mm_Ch132322

Communication System: UID 0, LTE (0); Frequency: 1745 MHz; Duty Cycle: 1:1

Medium: HSL_1800 Medium parameters used: $f = 1745$ MHz; $\sigma = 1.382$ S/m; $\epsilon_r = 41.164$; $\rho = 1000$ kg/m³

Ambient Temperature : 23.2 °C; Liquid Temperature : 22.3 °C

DASY5 Configuration:

- Probe: EX3DV4 - SN7608; ConvF(8.26, 8.26, 8.26) @ 1800 MHz; Calibrated: 2022.01.12
- Sensor-Surface: 2mm (Mechanical Surface Detection)
- Electronics: DAE4 Sn1643; Calibrated: 2021.12.30
- Phantom: Twin-SAM; Type: QD 000 P41 Ax; Serial: 2020
- Measurement SW: DASY52, Version 52.10 (4); SEMCAD X Version 14.6.14 (7483)

Ch132322/Area Scan (71x81x1): Interpolated grid: dx=1.500 mm, dy=1.500 mm

Maximum value of SAR (interpolated) = 0.279 W/kg

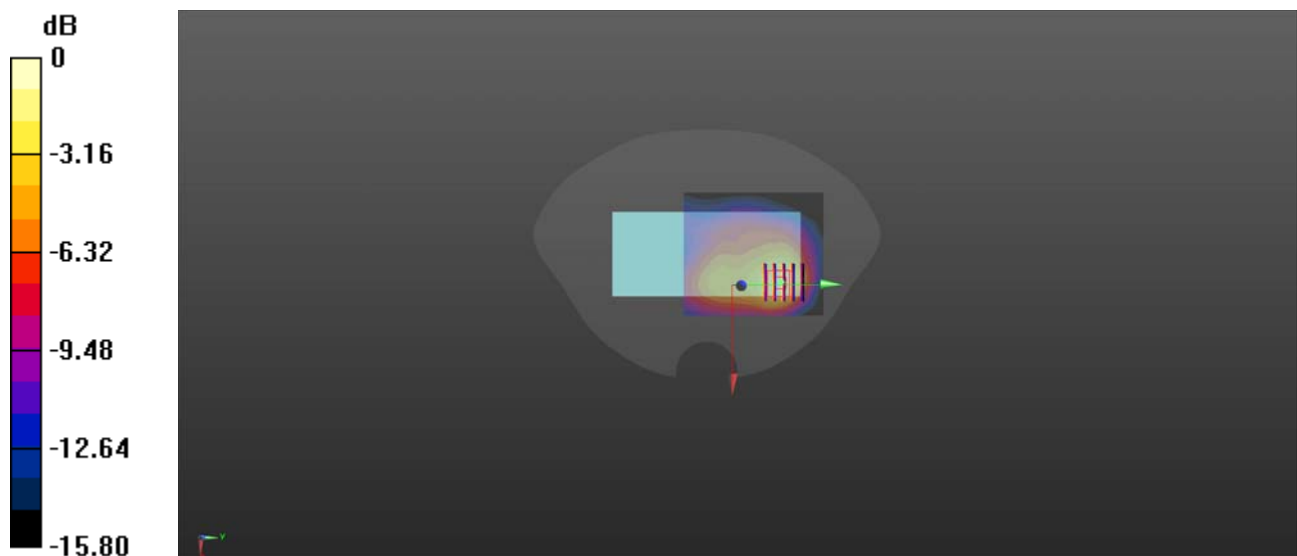
Ch132322/Zoom Scan (5x5x7)/Cube 0: Measurement grid: dx=8mm, dy=8mm, dz=5mm

Reference Value = 5.282 V/m; Power Drift = 0.05 dB

Peak SAR (extrapolated) = 0.316 W/kg

SAR(1 g) = 0.182 W/kg; SAR(10 g) = 0.103 W/kg

Maximum value of SAR (measured) = 0.250 W/kg



0 dB = 0.279 W/kg

WLAN 2.4GHz_802.11b 1Mbps_Back Side_10mm_Ch7

Communication System: UID 0, WLAN 2.4GHz 802.11b (0); Frequency: 2442 MHz; Duty Cycle: 1:1
Medium: HSL_2450 Medium parameters used: $f = 2442$ MHz; $\sigma = 1.808$ S/m; $\epsilon_r = 38.829$; $\rho = 1000$ kg/m³

Ambient Temperature : 23.2 °C; Liquid Temperature : 22.3 °C

DASY5 Configuration:

- Probe: EX3DV4 - SN7608; ConvF(7.42, 7.42, 7.42) @ 2450 MHz; Calibrated: 2022.01.12
- Sensor-Surface: 2mm (Mechanical Surface Detection)
- Electronics: DAE4 Sn1643; Calibrated: 2021.12.30
- Phantom: Twin-SAM; Type: QD 000 P41 Ax; Serial: 2020
- Measurement SW: DASY52, Version 52.10 (4); SEMCAD X Version 14.6.14 (7483)

Ch7/Area Scan (81x101x1): Interpolated grid: dx=1.200 mm, dy=1.200 mm

Maximum value of SAR (interpolated) = 0.103 W/kg

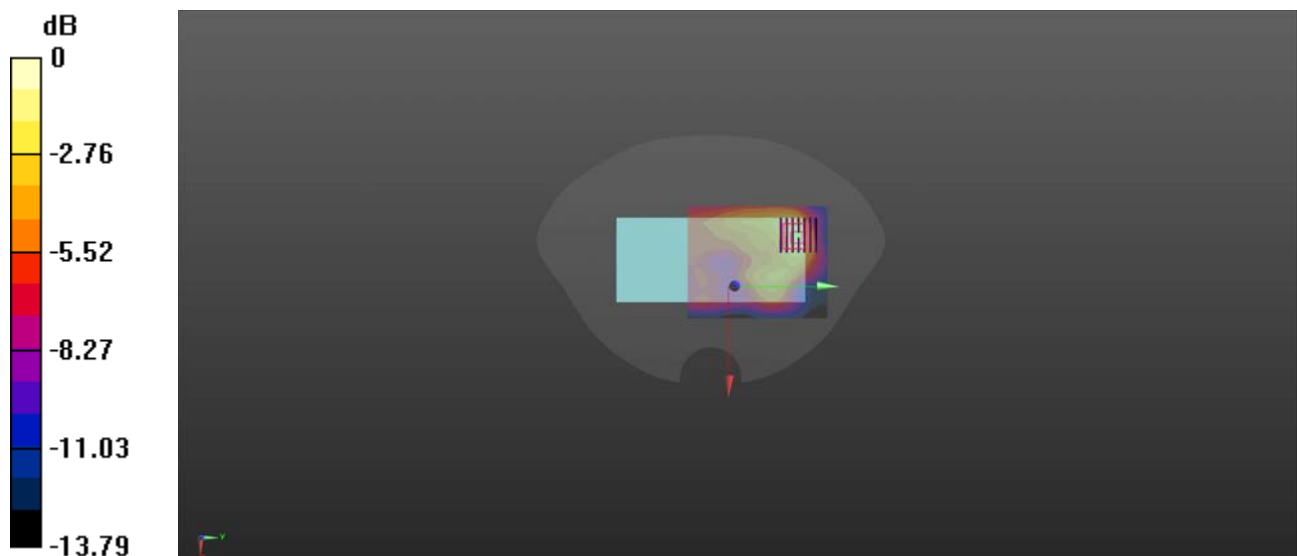
Ch7/Zoom Scan (7x7x7)/Cube 0: Measurement grid: dx=5mm, dy=5mm, dz=5mm

Reference Value = 3.206 V/m; Power Drift = -0.04 dB

Peak SAR (extrapolated) = 0.135 W/kg

SAR(1 g) = 0.062 W/kg; SAR(10 g) = 0.033 W/kg

Maximum value of SAR (measured) = 0.0948 W/kg



0 dB = 0.103 W/kg