



REPORT No. : SZ21070268S01

Annex C Plots of System Performance Check

System Check_750MHz_Head

Communication System: UID 0, CW (0); Frequency: 750 MHz; Duty Cycle: 1:1

Medium: HSL_750 Medium parameters used: $f = 750$ MHz; $\sigma = 0.908$ S/m; $\epsilon_r = 41.966$; $\rho = 1000$ kg/m³

Ambient Temperature : 23.2 °C; Liquid Temperature : 22.4 °C

DASY5 Configuration:

- Probe: EX3DV4 - SN7608; ConvF(9.76, 9.76, 9.76) @ 750 MHz; Calibrated: 2020.11.27
- Sensor-Surface: 2mm (Mechanical Surface Detection)
- Electronics: DAE4 Sn1643; Calibrated: 2020.11.30
- Phantom: Twin-SAM; Type: QD 000 P41 Ax; Serial: 2020
- Measurement SW: DASY52, Version 52.10 (4); SEMCAD X Version 14.6.14 (7483)

CW750/Area Scan (81x81x1): Interpolated grid: dx=1.500 mm, dy=1.500 mm

Maximum value of SAR (interpolated) = 2.76 W/kg

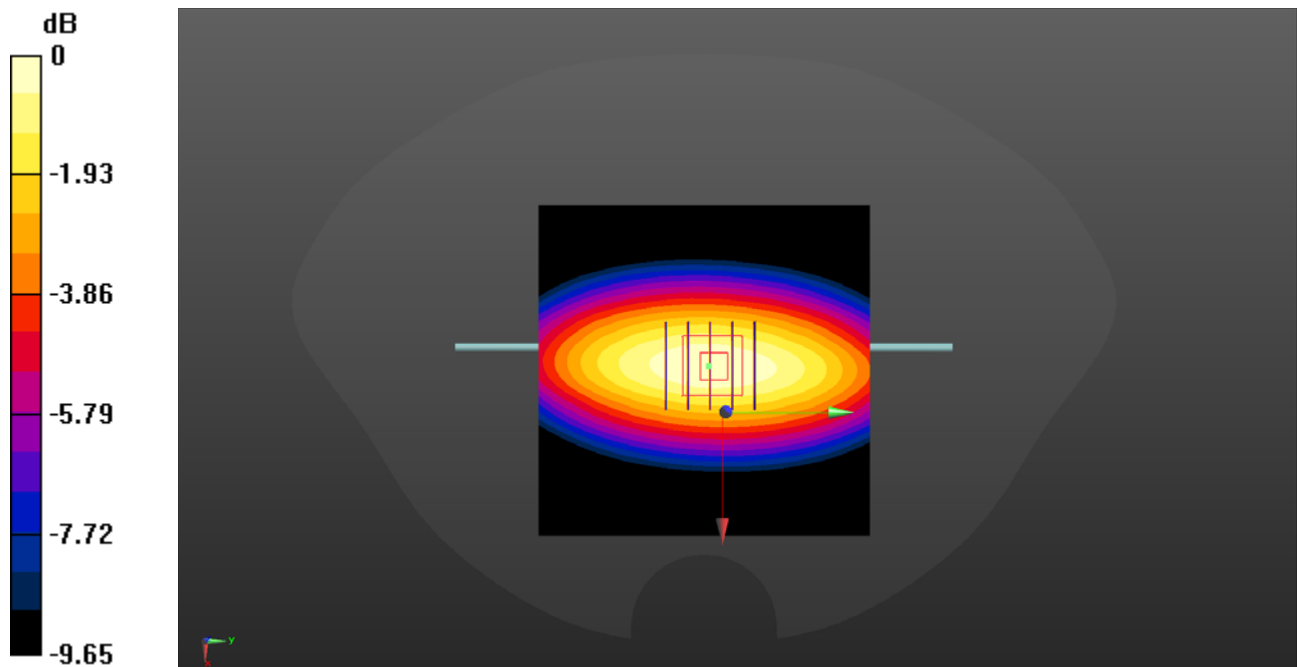
CW750/Zoom Scan (5x5x7)/Cube 0: Measurement grid: dx=8mm, dy=8mm, dz=5mm

Reference Value = 56.44 V/m; Power Drift = -0.02 dB

Peak SAR (extrapolated) = 3.87 W/kg

SAR(1 g) = 2.08 W/kg; SAR(10 g) = 1.41 W/kg

Maximum value of SAR (measured) = 2.74 W/kg



0 dB = 2.74 W/kg

System Check_900MHz_Head

Communication System: UID 0, CW (0); Frequency: 900 MHz; Duty Cycle: 1:1

Medium: HSL_900 Medium parameters used: $f = 900 \text{ MHz}$; $\sigma = 0.965 \text{ S/m}$; $\epsilon_r = 41.683$; $\rho = 1000 \text{ kg/m}^3$

Ambient Temperature : $23.2 \text{ }^\circ\text{C}$; Liquid Temperature : $22.4 \text{ }^\circ\text{C}$

DASY5 Configuration:

- Probe: EX3DV4 - SN7608; ConvF(9.57, 9.57, 9.57) @ 900 MHz; Calibrated: 2020.11.27
- Sensor-Surface: 2mm (Mechanical Surface Detection)
- Electronics: DAE4 Sn1643; Calibrated: 2020.11.30
- Phantom: Twin-SAM; Type: QD 000 P41 Ax; Serial: 2020
- Measurement SW: DASY52, Version 52.10 (4); SEMCAD X Version 14.6.14 (7483)

CW900/Area Scan (71x71x1): Interpolated grid: $dx=1.500 \text{ mm}$, $dy=1.500 \text{ mm}$

Maximum value of SAR (interpolated) = 3.98 W/kg

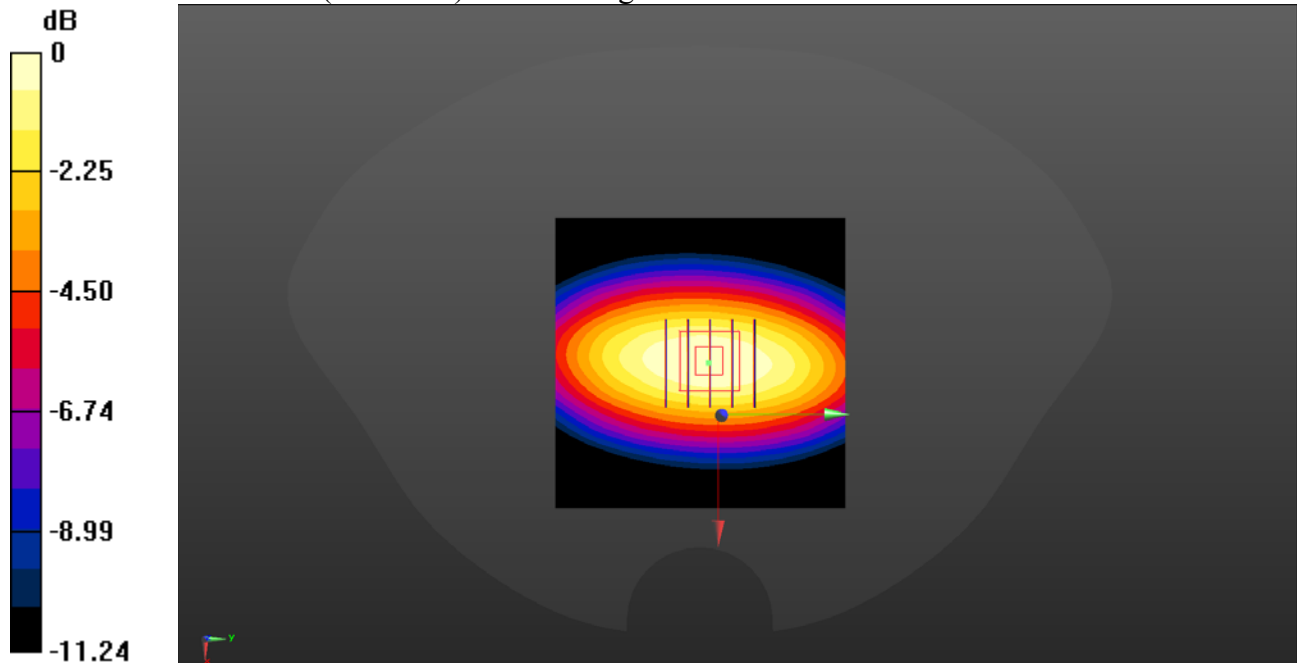
CW900/Zoom Scan (5x5x7)/Cube 0: Measurement grid: $dx=8\text{mm}$, $dy=8\text{mm}$, $dz=5\text{mm}$

Reference Value = 45.47 V/m ; Power Drift = -0.04 dB

Peak SAR (extrapolated) = 4.70 W/kg

SAR(1 g) = 2.75 W/kg ; SAR(10 g) = 1.76 W/kg

Maximum value of SAR (measured) = 3.92 W/kg



0 dB = 3.92 W/kg

System Check_1800MHz_Head

Communication System: UID 0, CW (0); Frequency: 1800 MHz; Duty Cycle: 1:1

Medium: HSL_1800 Medium parameters used: $f = 1800$ MHz; $\sigma = 1.422$ S/m; $\epsilon_r = 40.655$; $\rho = 1000$ kg/m³

Ambient Temperature : 23.2 °C; Liquid Temperature : 22.1 °C

DASY5 Configuration:

- Probe: EX3DV4 - SN7608; ConvF(8.32, 8.32, 8.32) @ 1800 MHz; Calibrated: 2020.11.27
- Sensor-Surface: 2mm (Mechanical Surface Detection)
- Electronics: DAE4 Sn1643; Calibrated: 2020.11.30
- Phantom: Twin-SAM; Type: QD 000 P41 Ax; Serial: 2020
- Measurement SW: DASY52, Version 52.10 (4); SEMCAD X Version 14.6.14 (7483)

CW1800/Area Scan (81x81x1): Interpolated grid: dx=1.500 mm, dy=1.500 mm

Maximum value of SAR (interpolated) = 16.77 W/kg

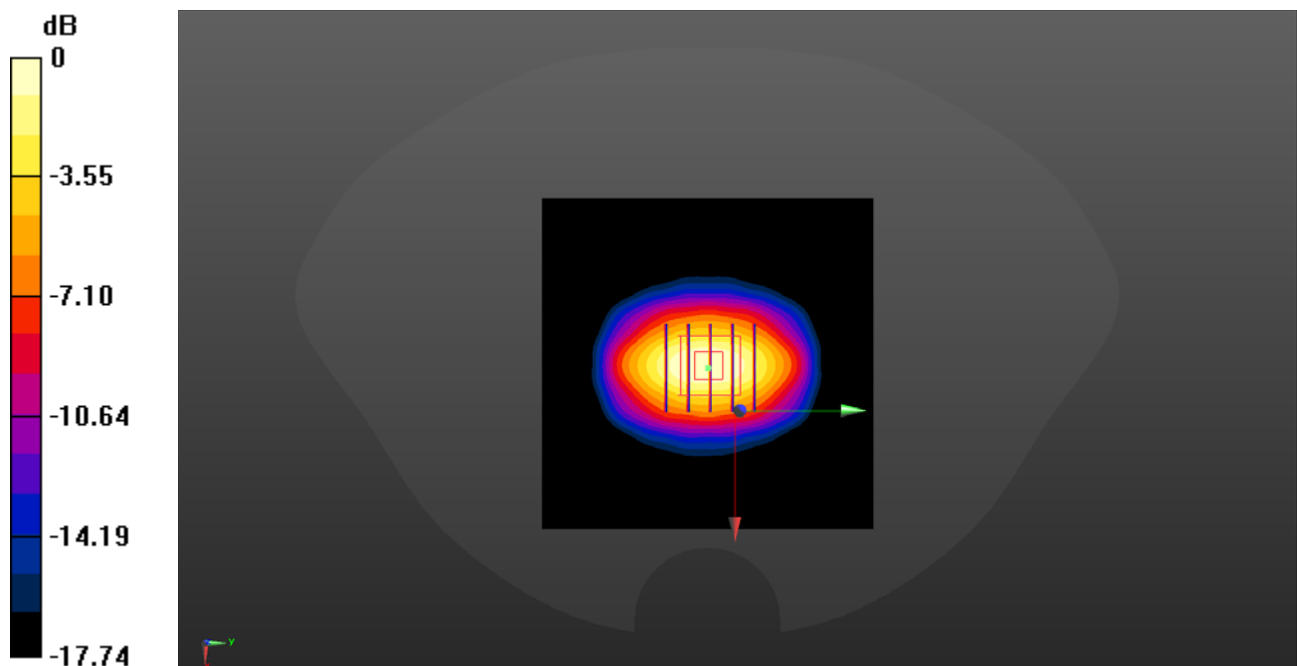
CW1800/Zoom Scan (5x5x7)/Cube 0: Measurement grid: dx=8mm, dy=8mm, dz=5mm

Reference Value = 66.74 V/m; Power Drift = 0.06 dB

Peak SAR (extrapolated) = 18.2 W/kg

SAR(1 g) = 10.19 W/kg; SAR(10 g) = 5.34 W/kg

Maximum value of SAR (measured) = 16.74 W/kg



0 dB = 16.74 W/kg

System Check_2000MHz_Head

Communication System: UID 0, CW (0); Frequency: 2000 MHz; Duty Cycle: 1:1

Medium: HSL_2000 Medium parameters used: $f = 2000$ MHz; $\sigma = 1.435$ S/m; $\epsilon_r = 40.622$; $\rho = 1000$ kg/m³

Ambient Temperature : 23.2 °C; Liquid Temperature : 22.1 °C

DASY5 Configuration:

- Probe: EX3DV4 - SN7608; ConvF(8.04, 8.04, 8.04) @ 2000 MHz; Calibrated: 2020.11.27
- Sensor-Surface: 2mm (Mechanical Surface Detection)
- Electronics: DAE4 Sn1643; Calibrated: 2020.11.30
- Phantom: Twin-SAM; Type: QD 000 P41 Ax; Serial: 2020
- Measurement SW: DASY52, Version 52.10 (4); SEMCAD X Version 14.6.14 (7483)

CW2000/Area Scan (81x81x1): Interpolated grid: dx=1.500 mm, dy=1.500 mm

Maximum value of SAR (interpolated) = 16.50 W/kg

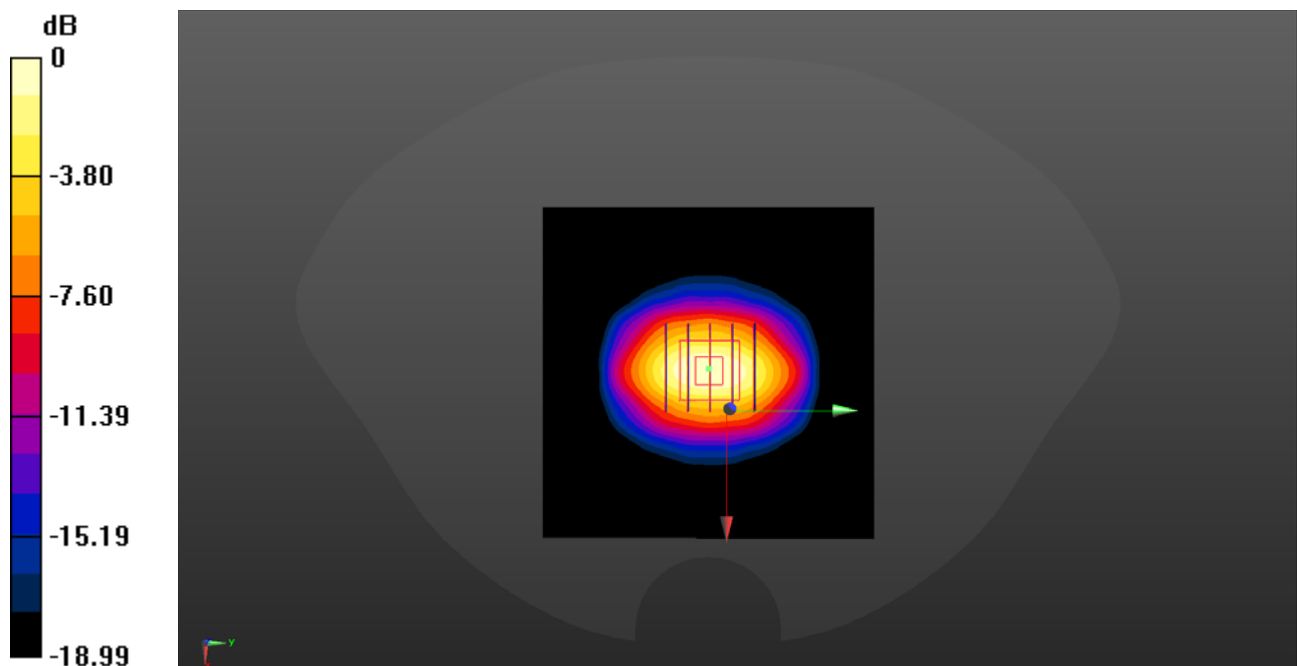
CW2000/Zoom Scan (5x5x7)/Cube 0: Measurement grid: dx=8mm, dy=8mm, dz=5mm

Reference Value = 66.28 V/m; Power Drift = 0.03 dB

Peak SAR (extrapolated) = 19.2 W/kg

SAR(1 g) = 10.11 W/kg; SAR(10 g) = 5.42 W/kg

Maximum value of SAR (measured) = 16.50 W/kg



0 dB = 16.50 W/kg

System Check_2450MHz_Head

Communication System: UID 0, CW (0); Frequency: 2450 MHz; Duty Cycle: 1:1

Medium: HSL_2450 Medium parameters used: $f = 2450$ MHz; $\sigma = 1.822$ S/m; $\epsilon_r = 39.366$; $\rho = 1000$ kg/m³

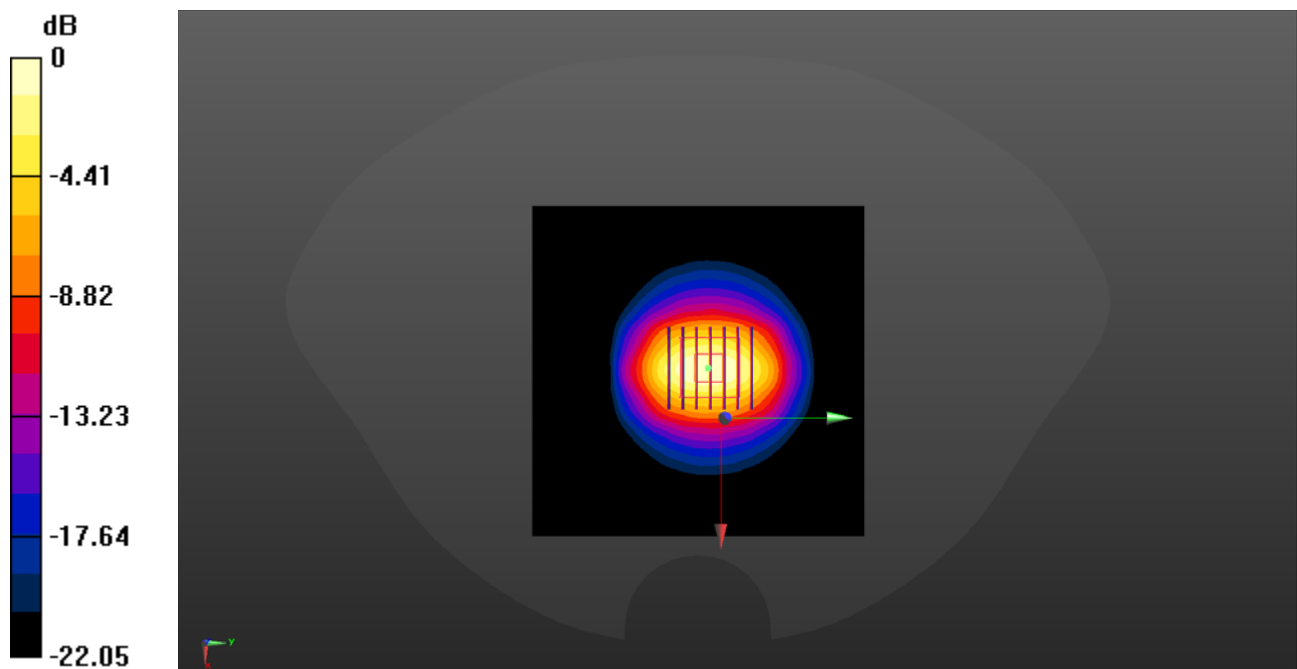
Ambient Temperature : 23.2 °C; Liquid Temperature : 22.1 °C

DASY5 Configuration:

- Probe: EX3DV4 - SN7608; ConvF(7.58, 7.58, 7.58) @ 2450 MHz; Calibrated: 2020.11.27
- Sensor-Surface: 2mm (Mechanical Surface Detection)
- Electronics: DAE4 Sn1643; Calibrated: 2020.11.30
- Phantom: Twin-SAM; Type: QD 000 P41 Ax; Serial: 2020
- Measurement SW: DASY52, Version 52.10 (4); SEMCAD X Version 14.6.14 (7483)

CW2450/Area Scan (101x101x1): Interpolated grid: dx=1.200 mm, dy=1.200 mm
Maximum value of SAR (interpolated) = 15.0 W/kg

CW2450/Zoom Scan (7x7x7)/Cube 0: Measurement grid: dx=5mm, dy=5mm, dz=5mm
Reference Value = 87.96 V/m; Power Drift = 0.06 dB
Peak SAR (extrapolated) = 29.1 W/kg
SAR(1 g) = 13.24 W/kg; SAR(10 g) = 6.22 W/kg
Maximum value of SAR (measured) = 14.8 W/kg



0 dB = 14.8 W/kg

System Check_2600MHz_Head

Communication System: UID 0, CW (0); Frequency: 2600 MHz; Duty Cycle: 1:1

Medium: HSL_2600 Medium parameters used: $f = 2600$ MHz; $\sigma = 1.988$ S/m; $\epsilon_r = 39.179$; $\rho = 1000$ kg/m³

Ambient Temperature : 23.2 °C; Liquid Temperature : 22.1 °C

DASY5 Configuration:

- Probe: EX3DV4 - SN7608; ConvF(7.4, 7.4, 7.4) @ 2600 MHz; Calibrated: 2020.11.27
- Sensor-Surface: 2mm (Mechanical Surface Detection)
- Electronics: DAE4 Sn1643; Calibrated: 2020.11.30
- Phantom: Twin-SAM; Type: QD 000 P41 Ax; Serial: 2020
- Measurement SW: DASY52, Version 52.10 (4); SEMCAD X Version 14.6.14 (7483)

CW2600/Area Scan (81x101x1): Interpolated grid: dx=1.200 mm, dy=1.200 mm

Maximum value of SAR (interpolated) = 19.50 W/kg

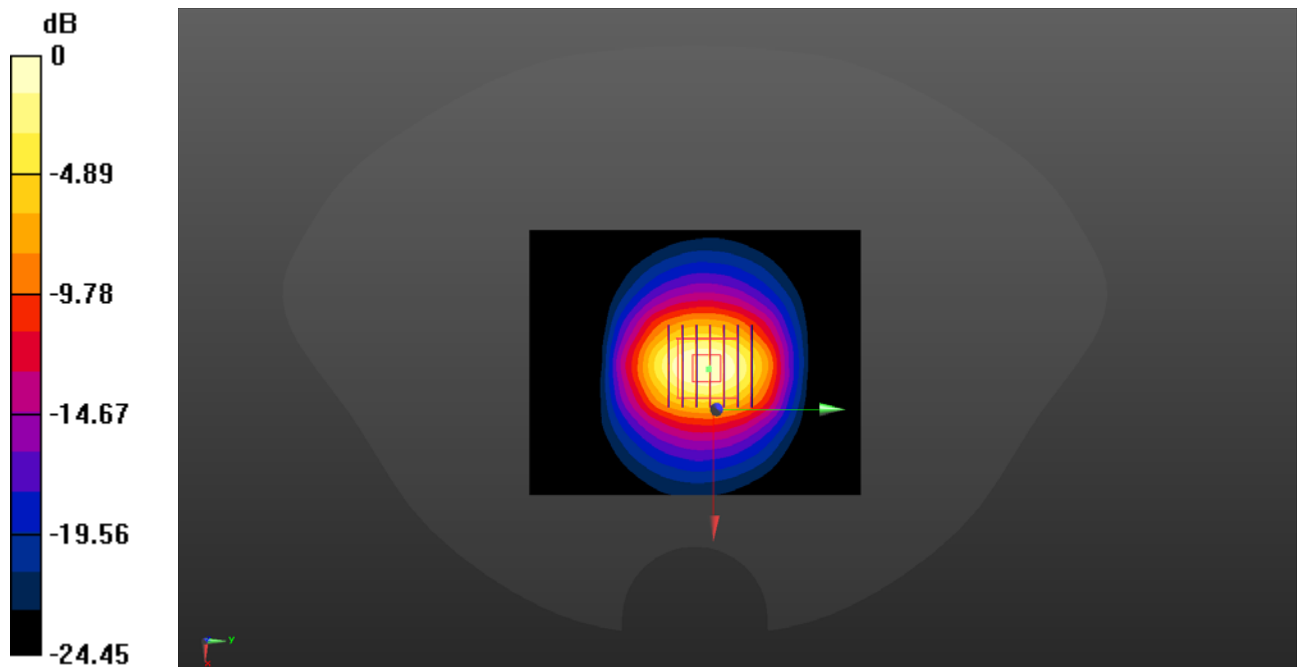
CW2600/Zoom Scan (7x7x7)/Cube 0: Measurement grid: dx=5mm, dy=5mm, dz=5mm

Reference Value = 65.66 V/m; Power Drift = -0.00 dB

Peak SAR (extrapolated) = 17.8 W/kg

SAR(1 g) = 13.76 W/kg; SAR(10 g) = 6.34 W/kg

Maximum value of SAR (measured) = 18.97 W/kg



0 dB = 18.97 W/kg