



REPORT No. : SZ21010286S01

Annex D Plots of Maximum SAR Test Results

GSM850_GPRS(2 TX slots)_Right Cheek_Ch189

Communication System: UID 0, GSM850(class 10) (0); Frequency: 836.4 MHz; Duty Cycle: 1:4.15
Medium: HSL_835 Medium parameters used: $f = 836.4$ MHz; $\sigma = 0.943$ S/m; $\epsilon_r = 42.978$; $\rho = 1000$ kg/m³

Ambient Temperature : 23.2 °C; Liquid Temperature : 22.1 °C

DASY5 Configuration:

- Probe: EX3DV4 - SN7608; ConvF(9.57, 9.57, 9.57) @ 836.4 MHz; Calibrated: 2020.11.27
- Sensor-Surface: 2mm (Mechanical Surface Detection)
- Electronics: DAE4 Sn1643; Calibrated: 2020.11.30
- Phantom: Twin-SAM; Type: QD 000 P41 Ax; Serial: 2020
- Measurement SW: DASY52, Version 52.10 (4); SEMCAD X Version 14.6.14 (7483)

Ch189/Area Scan (71x91x1): Interpolated grid: dx=1.500 mm, dy=1.500 mm

Maximum value of SAR (interpolated) = 0.244 W/kg

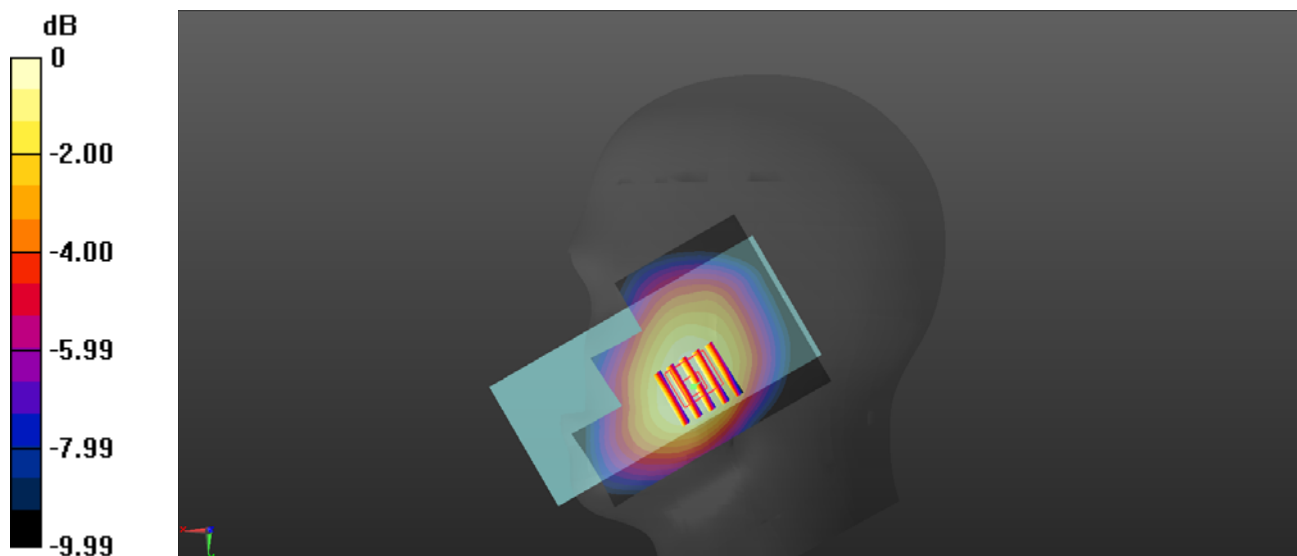
Ch189/Zoom Scan (5x5x7)/Cube 0: Measurement grid: dx=8mm, dy=8mm, dz=5mm

Reference Value = 4.327 V/m; Power Drift = -0.06 dB

Peak SAR (extrapolated) = 0.267 W/kg

SAR(1 g) = 0.210 W/kg; SAR(10 g) = 0.159 W/kg

Maximum value of SAR (measured) = 0.242 W/kg



0 dB = 0.242 W/kg

GSM1900_GPRS(3 TX slots)_Left Cheek_Ch661

Communication System: UID 0, GSM1900(class 11) (0); Frequency: 1880 MHz; Duty Cycle: 1:2.77
Medium: HSL_1900 Medium parameters used: $f = 1880$ MHz; $\sigma = 1.321$ S/m; $\epsilon_r = 39.882$; $\rho = 1000$ kg/m³

Ambient Temperature : 23.2 °C; Liquid Temperature : 22.4 °C

DASY5 Configuration:

- Probe: EX3DV4 - SN7608; ConvF(8.04, 8.04, 8.04) @ 1880 MHz; Calibrated: 2020.11.27
- Sensor-Surface: 2mm (Mechanical Surface Detection)
- Electronics: DAE4 Sn1643; Calibrated: 2020.11.30
- Phantom: Twin-SAM; Type: QD 000 P41 Ax; Serial: 2020
- Measurement SW: DASY52, Version 52.10 (4); SEMCAD X Version 14.6.14 (7483)

Ch661/Area Scan (71x91x1): Interpolated grid: dx=1.500 mm, dy=1.500 mm

Maximum value of SAR (interpolated) = 0.0208 W/kg

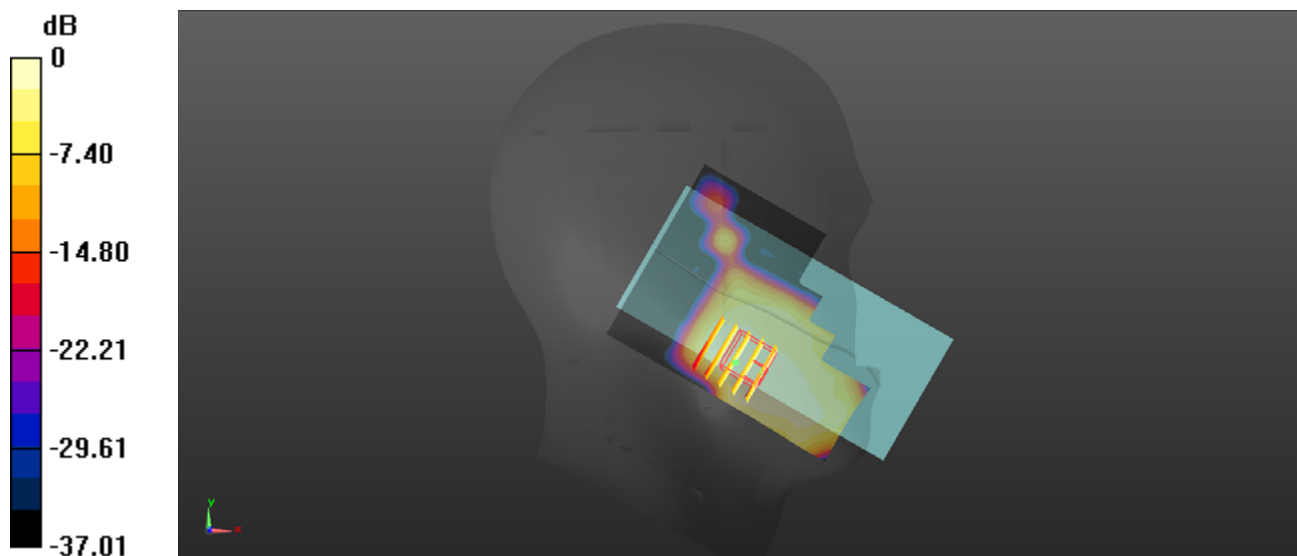
Ch661/Zoom Scan (5x5x7)/Cube 0: Measurement grid: dx=8mm, dy=8mm, dz=5mm

Reference Value = 1.410 V/m; Power Drift = 0.02 dB

Peak SAR (extrapolated) = 0.0210 W/kg

SAR(1 g) = 0.013 W/kg; SAR(10 g) = 0.00805 W/kg

Maximum value of SAR (measured) = 0.0165 W/kg



0 dB = 0.0165 W/kg

WCDMA Band II_RMC 12.2Kbps_Left Cheek_Ch9538

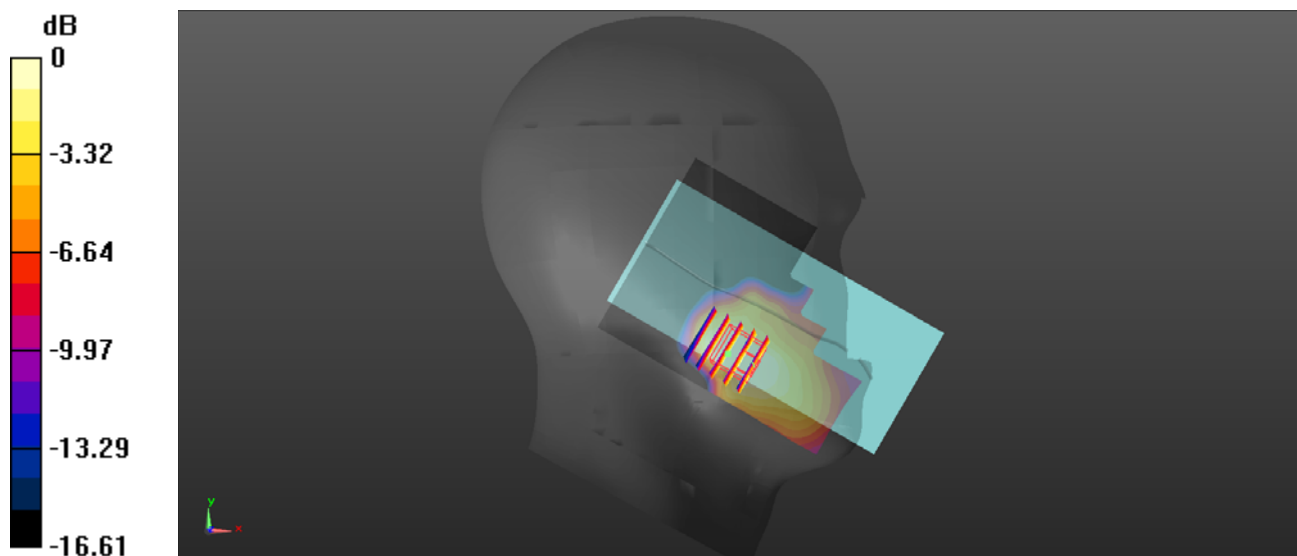
Communication System: UID 0, UMTS-FDD (0); Frequency: 1907.6 MHz; Duty Cycle: 1:1
Medium: HSL_1900 Medium parameters used: $f = 1908$ MHz; $\sigma = 1.32$ S/m; $\epsilon_r = 39.631$; $\rho = 1000$ kg/m³
Ambient Temperature : 23.2 °C; Liquid Temperature : 22.4 °C

DASY5 Configuration:

- Probe: EX3DV4 - SN7608; ConvF(8.04, 8.04, 8.04) @ 1907.6 MHz; Calibrated: 2020.11.27
- Sensor-Surface: 2mm (Mechanical Surface Detection)
- Electronics: DAE4 Sn1643; Calibrated: 2020.11.30
- Phantom: Twin-SAM; Type: QD 000 P41 Ax; Serial: 2020
- Measurement SW: DASY52, Version 52.10 (4); SEMCAD X Version 14.6.14 (7483)

Ch9538/Area Scan (71x91x1): Interpolated grid: dx=1.500 mm, dy=1.500 mm
Maximum value of SAR (interpolated) = 0.0304 W/kg

Ch9538/Zoom Scan (5x5x7)/Cube 0: Measurement grid: dx=8mm, dy=8mm, dz=5mm
Reference Value = 1.654 V/m; Power Drift = 0.07 dB
Peak SAR (extrapolated) = 0.0830 W/kg
SAR(1 g) = 0.020 W/kg; SAR(10 g) = 0.012 W/kg
Maximum value of SAR (measured) = 0.0269 W/kg



0 dB = 0.0269 W/kg

WCDMA Band IV_RMC 12.2Kbps_Left Cheek_Ch1513

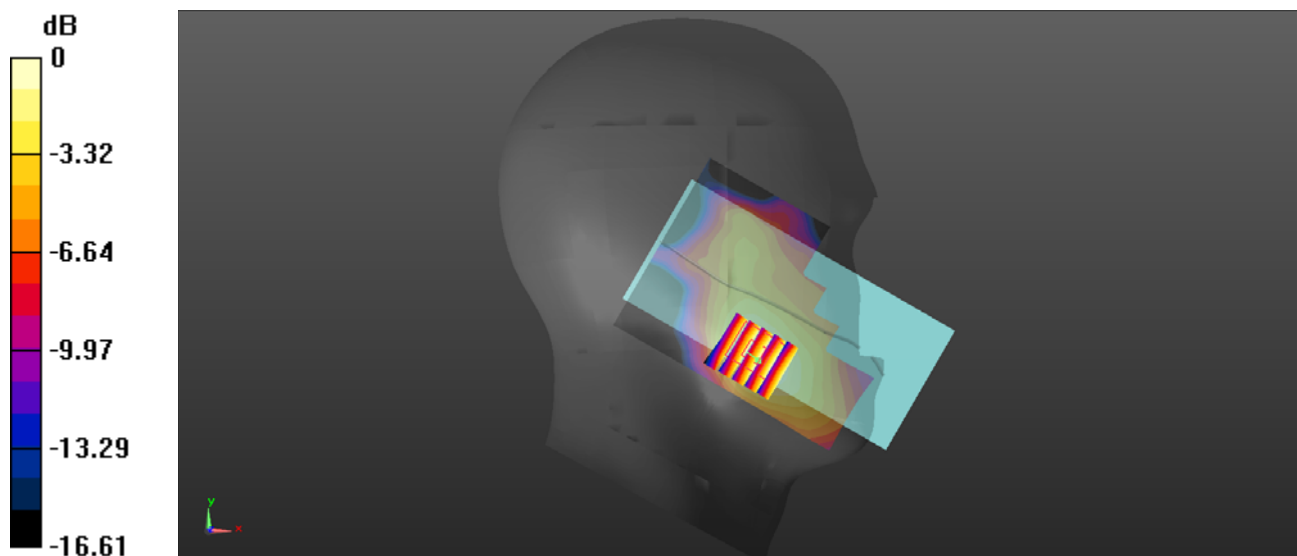
Communication System: UID 0, UMTS-FDD (0); Frequency: 1752.6 MHz; Duty Cycle: 1:1
Medium: HSL_1750 Medium parameters used: $f = 1753$ MHz; $\sigma = 1.454$ S/m; $\epsilon_r = 39.5$; $\rho = 1000$ kg/m³
Ambient Temperature : 23.2 °C; Liquid Temperature : 22.4 °C

DASY5 Configuration:

- Probe: EX3DV4 - SN7608; ConvF(8.32, 8.32, 8.32) @ 1752.6 MHz; Calibrated: 2020.11.27
- Sensor-Surface: 2mm (Mechanical Surface Detection)
- Electronics: DAE4 Sn1643; Calibrated: 2020.11.30
- Phantom: Twin-SAM; Type: QD 000 P41 Ax; Serial: 2020
- Measurement SW: DASY52, Version 52.10 (4); SEMCAD X Version 14.6.14 (7483)

Ch1513/Area Scan (71x91x1): Interpolated grid: dx=1.500 mm, dy=1.500 mm
Maximum value of SAR (interpolated) = 0.199 W/kg

Ch1513/Zoom Scan (5x5x7)/Cube 0: Measurement grid: dx=8mm, dy=8mm, dz=5mm
Reference Value = 2.746 V/m; Power Drift = 0.03 dB
Peak SAR (extrapolated) = 0.233 W/kg
SAR(1 g) = 0.153 W/kg; SAR(10 g) = 0.098 W/kg
Maximum value of SAR (measured) = 0.193 W/kg



0 dB = 0.193 W/kg

WCDMA Band V_RMC 12.2Kbps_Right Cheek_Ch4233

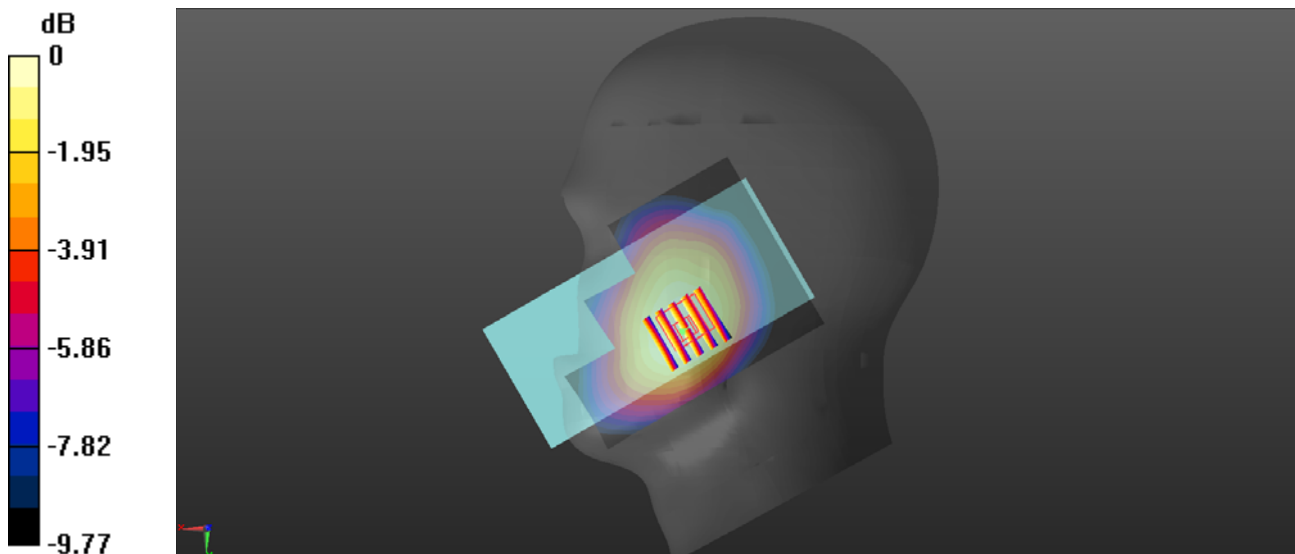
Communication System: UID 0, UMTS-FDD (0); Frequency: 846.6 MHz; Duty Cycle: 1:1
Medium: HSL_835 Medium parameters used: $f = 847$ MHz; $\sigma = 0.959$ S/m; $\epsilon_r = 43.168$; $\rho = 1000$ kg/m³
Ambient Temperature : 23.2 °C; Liquid Temperature : 22.1 °C

DASY5 Configuration:

- Probe: EX3DV4 - SN7608; ConvF(9.57, 9.57, 9.57) @ 846.6 MHz; Calibrated: 2020.11.27
- Sensor-Surface: 2mm (Mechanical Surface Detection)
- Electronics: DAE4 Sn1643; Calibrated: 2020.11.30
- Phantom: Twin-SAM; Type: QD 000 P41 Ax; Serial: 2020
- Measurement SW: DASY52, Version 52.10 (4); SEMCAD X Version 14.6.14 (7483)

Ch4233/Area Scan (71x91x1): Interpolated grid: dx=1.500 mm, dy=1.500 mm
Maximum value of SAR (interpolated) = 0.114 W/kg

Ch4233/Zoom Scan (5x5x7)/Cube 0: Measurement grid: dx=8mm, dy=8mm, dz=5mm
Reference Value = 2.642 V/m; Power Drift = -0.01 dB
Peak SAR (extrapolated) = 0.125 W/kg
SAR(1 g) = 0.097 W/kg; SAR(10 g) = 0.074 W/kg
Maximum value of SAR (measured) = 0.113 W/kg



0 dB = 0.113 W/kg

LTE Band 2_20MHz_QPSK_1RB_0Offset_Left Cheek_Ch18900

Communication System: UID 0, LTE (0); Frequency: 1880 MHz; Duty Cycle: 1:1

Medium: HSL_1900 Medium parameters used: $f = 1880$ MHz; $\sigma = 1.321$ S/m; $\epsilon_r = 39.882$; $\rho = 1000$ kg/m³

Ambient Temperature : 23.2 °C; Liquid Temperature : 22.4 °C

DASY5 Configuration:

- Probe: EX3DV4 - SN7608; ConvF(8.04, 8.04, 8.04) @ 1880 MHz; Calibrated: 2020.11.27
- Sensor-Surface: 2mm (Mechanical Surface Detection)
- Electronics: DAE4 Sn1643; Calibrated: 2020.11.30
- Phantom: Twin-SAM; Type: QD 000 P41 Ax; Serial: 2020
- Measurement SW: DASY52, Version 52.10 (4); SEMCAD X Version 14.6.14 (7483)

Ch18900/Area Scan (71x91x1): Interpolated grid: dx=1.500 mm, dy=1.500 mm

Maximum value of SAR (interpolated) = 0.0379 W/kg

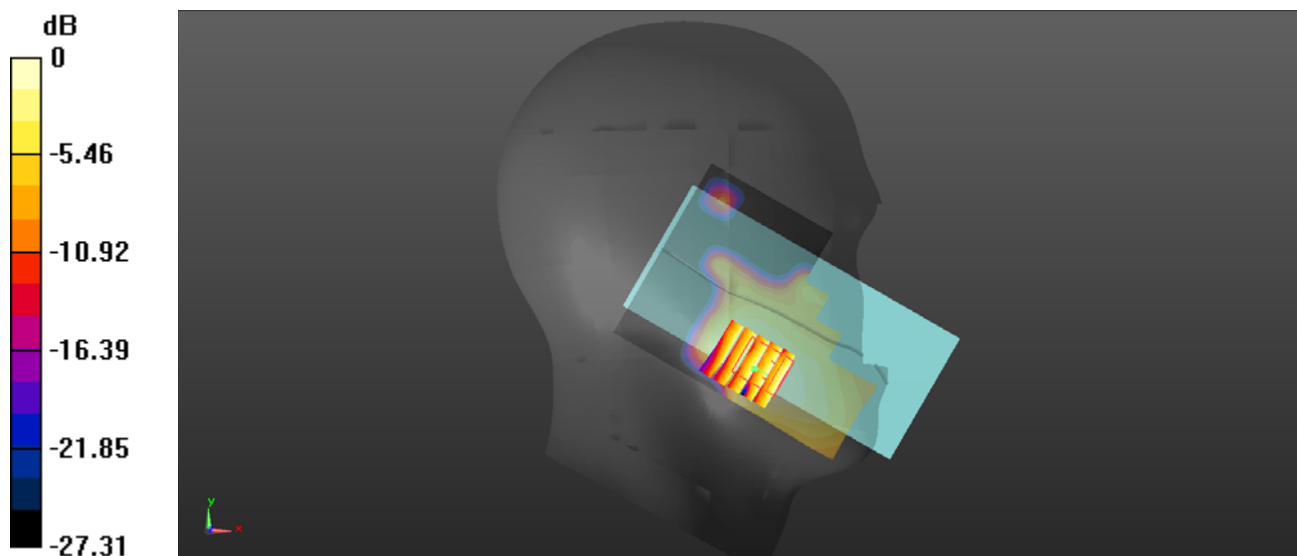
Ch18900/Zoom Scan (5x5x7)/Cube 0: Measurement grid: dx=8mm, dy=8mm, dz=5mm

Reference Value = 1.698 V/m; Power Drift = -0.02 dB

Peak SAR (extrapolated) = 0.0400 W/kg

SAR(1 g) = 0.025 W/kg; SAR(10 g) = 0.015 W/kg

Maximum value of SAR (measured) = 0.0321 W/kg



0 dB = 0.0321 W/kg

LTE Band 4_20MHz_QPSK_1RB_0Offset_Left Cheek_Ch20175

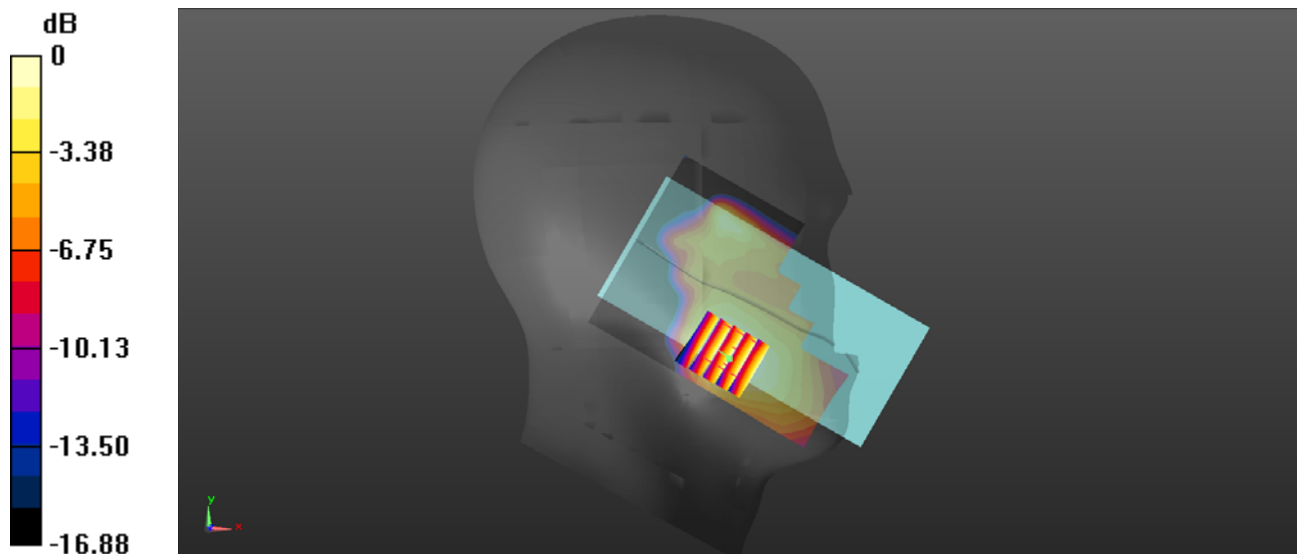
Communication System: UID 0, LTE (0); Frequency: 1732.5 MHz; Duty Cycle: 1:1
Medium: HSL_1750 Medium parameters used: $f = 1733$ MHz; $\sigma = 1.412$ S/m; $\epsilon_r = 39.814$; $\rho = 1000$ kg/m³
Ambient Temperature : 23.2 °C; Liquid Temperature : 22.4 °C

DASY5 Configuration:

- Probe: EX3DV4 - SN7608; ConvF(8.32, 8.32, 8.32) @ 1732.5 MHz; Calibrated: 2020.11.27
- Sensor-Surface: 2mm (Mechanical Surface Detection)
- Electronics: DAE4 Sn1643; Calibrated: 2020.11.30
- Phantom: Twin-SAM; Type: QD 000 P41 Ax; Serial: 2020
- Measurement SW: DASY52, Version 52.10 (4); SEMCAD X Version 14.6.14 (7483)

Ch20175/Area Scan (71x91x1): Interpolated grid: dx=1.500 mm, dy=1.500 mm
Maximum value of SAR (interpolated) = 0.0907 W/kg

Ch20175/Zoom Scan (5x5x7)/Cube 0: Measurement grid: dx=8mm, dy=8mm, dz=5mm
Reference Value = 2.192 V/m; Power Drift = 0.08 dB
Peak SAR (extrapolated) = 0.106 W/kg
SAR(1 g) = 0.068 W/kg; SAR(10 g) = 0.045 W/kg
Maximum value of SAR (measured) = 0.0886 W/kg



0 dB = 0.0886 W/kg

LTE Band 5_10MHz_QPSK_1RB_0Offset_Right Cheek_Ch20525

Communication System: UID 0, LTE (0); Frequency: 836.5 MHz; Duty Cycle: 1:1

Medium: HSL_835 Medium parameters used: $f = 836.5$ MHz; $\sigma = 0.943$ S/m; $\epsilon_r = 42.967$; $\rho = 1000$ kg/m³

Ambient Temperature : 23.2 °C; Liquid Temperature : 22.1 °C

DASY5 Configuration:

- Probe: EX3DV4 - SN7608; ConvF(9.57, 9.57, 9.57) @ 836.5 MHz; Calibrated: 2020.11.27
- Sensor-Surface: 2mm (Mechanical Surface Detection)
- Electronics: DAE4 Sn1643; Calibrated: 2020.11.30
- Phantom: Twin-SAM; Type: QD 000 P41 Ax; Serial: 2020
- Measurement SW: DASY52, Version 52.10 (4); SEMCAD X Version 14.6.14 (7483)

Ch20525/Area Scan (71x91x1): Interpolated grid: dx=1.500 mm, dy=1.500 mm

Maximum value of SAR (interpolated) = 0.179 W/kg

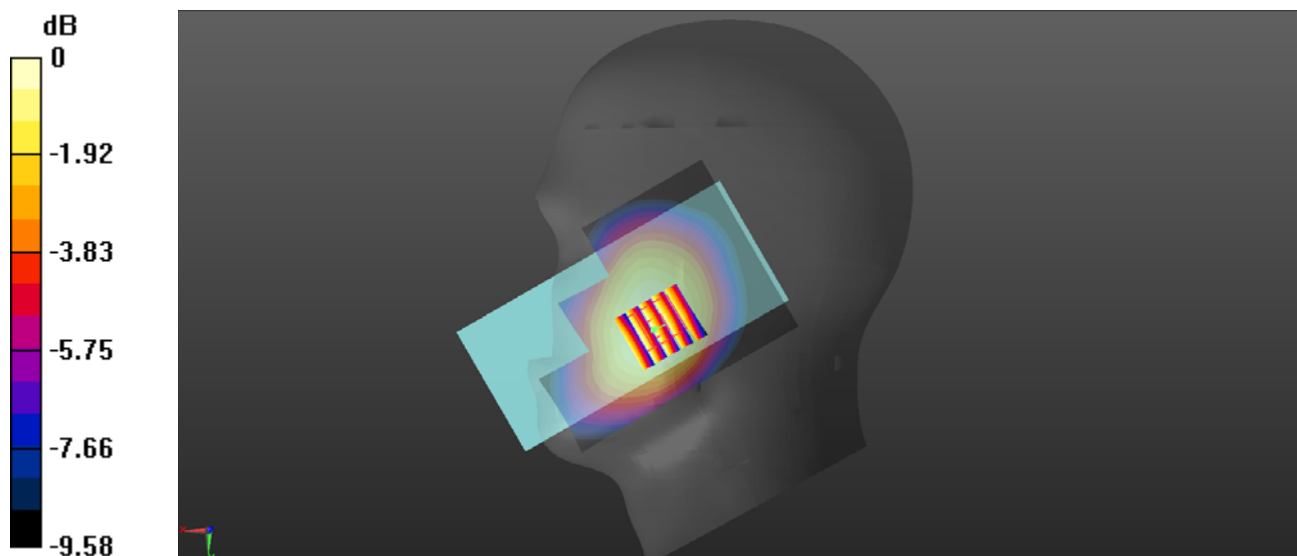
Ch20525/Zoom Scan (5x5x7)/Cube 0: Measurement grid: dx=8mm, dy=8mm, dz=5mm

Reference Value = 3.427 V/m; Power Drift = 0.03 dB

Peak SAR (extrapolated) = 0.197 W/kg

SAR(1 g) = 0.156 W/kg; SAR(10 g) = 0.118 W/kg

Maximum value of SAR (measured) = 0.179 W/kg



0 dB = 0.179 W/kg

LTE Band 7_20MHz_QPSK_1RB_0Offset_Left Cheek_Ch21100

Communication System: UID 0, LTE (0); Frequency: 2535 MHz; Duty Cycle: 1:1

Medium: HSL_2600 Medium parameters used: $f = 2535$ MHz; $\sigma = 1.911$ S/m; $\epsilon_r = 38.489$; $\rho = 1000$ kg/m³

Ambient Temperature : 23.2 °C; Liquid Temperature : 22.2 °C

DASY5 Configuration:

- Probe: EX3DV4 - SN7608; ConvF(7.4, 7.4, 7.4) @ 2535 MHz; Calibrated: 2020.11.27
- Sensor-Surface: 2mm (Mechanical Surface Detection)
- Electronics: DAE4 Sn1643; Calibrated: 2020.11.30
- Phantom: Twin-SAM; Type: QD 000 P41 Ax; Serial: 2020
- Measurement SW: DASY52, Version 52.10 (4); SEMCAD X Version 14.6.14 (7483)

Ch21100/Area Scan (81x111x1): Interpolated grid: dx=1.200 mm, dy=1.200 mm

Maximum value of SAR (interpolated) = 0.0682 W/kg

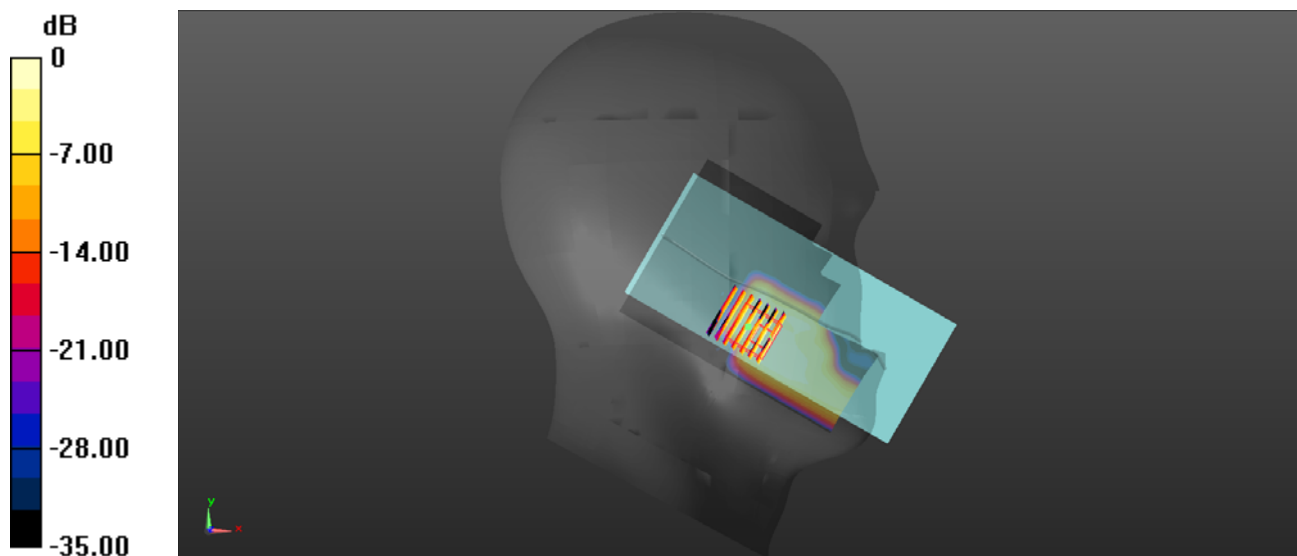
Ch21100/Zoom Scan (7x7x7)/Cube 0: Measurement grid: dx=5mm, dy=5mm, dz=5mm

Reference Value = 0 V/m; Power Drift = 0.02 dB

Peak SAR (extrapolated) = 0.0560 W/kg

SAR(1 g) = 0.029 W/kg; SAR(10 g) = 0.013 W/kg

Maximum value of SAR (measured) = 0.0418 W/kg



0 dB = 0.0418 W/kg

LTE Band 12_10MHz_QPSK_1RB_0Offset_Right Cheek_Ch23095

Communication System: UID 0, LTE (0); Frequency: 707.5 MHz; Duty Cycle: 1:1

Medium: HSL_835 Medium parameters used: $f = 707.5$ MHz; $\sigma = 0.848$ S/m; $\epsilon_r = 44.777$; $\rho = 1000$ kg/m³

Ambient Temperature : 23.2 °C; Liquid Temperature : 22.1 °C

DASY5 Configuration:

- Probe: EX3DV4 - SN7608; ConvF(9.76, 9.76, 9.76) @ 707.5 MHz; Calibrated: 2020.11.27
- Sensor-Surface: 2mm (Mechanical Surface Detection)
- Electronics: DAE4 Sn1643; Calibrated: 2020.11.30
- Phantom: Twin-SAM; Type: QD 000 P41 Ax; Serial: 2020
- Measurement SW: DASY52, Version 52.10 (4); SEMCAD X Version 14.6.14 (7483)

Ch23095/Area Scan (71x91x1): Interpolated grid: dx=1.500 mm, dy=1.500 mm

Maximum value of SAR (interpolated) = 0.172 W/kg

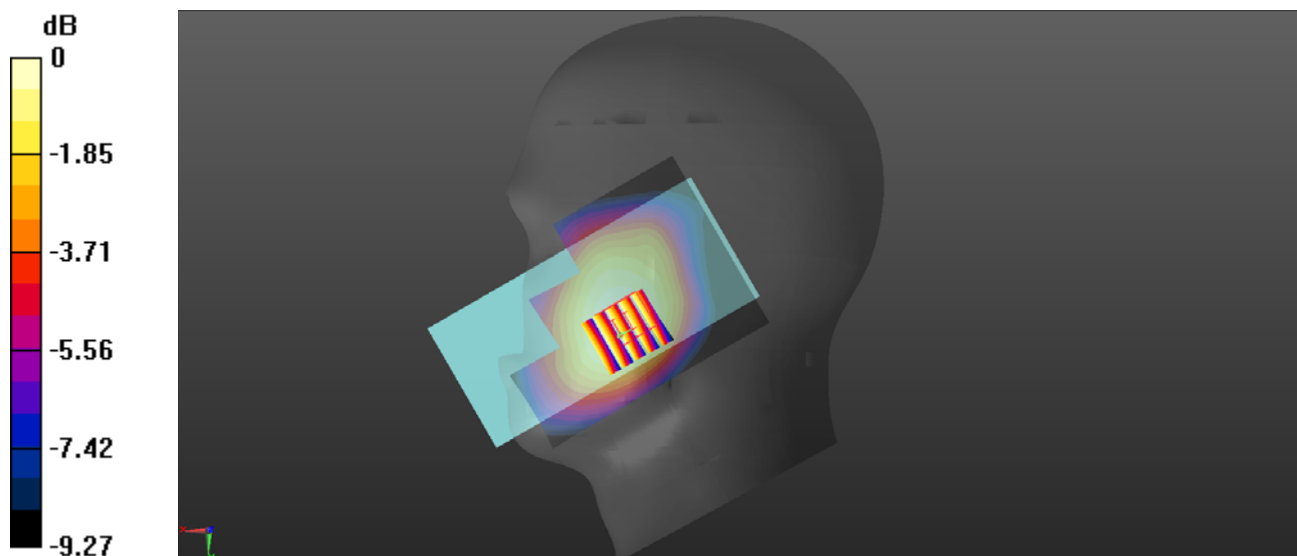
Ch23095/Zoom Scan (5x5x7)/Cube 0: Measurement grid: dx=8mm, dy=8mm, dz=5mm

Reference Value = 3.803 V/m; Power Drift = 0.07 dB

Peak SAR (extrapolated) = 0.181 W/kg

SAR(1 g) = 0.146 W/kg; SAR(10 g) = 0.114 W/kg

Maximum value of SAR (measured) = 0.165 W/kg



0 dB = 0.165 W/kg

LTE Band 38_20MHz_QPSK_1RB_0Offset_Left Cheek_Ch38000

Communication System: UID 0, LTE (0); Frequency: 2595 MHz; Duty Cycle: 1:1.59

Medium: HSL_2600 Medium parameters used: $f = 2595$ MHz; $\sigma = 1.98$ S/m; $\epsilon_r = 38.287$; $\rho = 1000$ kg/m³

Ambient Temperature : 23.2 °C; Liquid Temperature : 22.2 °C

DASY5 Configuration:

- Probe: EX3DV4 - SN7608; ConvF(7.4, 7.4, 7.4) @ 2595 MHz; Calibrated: 2020.11.27
- Sensor-Surface: 2mm (Mechanical Surface Detection)
- Electronics: DAE4 Sn1643; Calibrated: 2020.11.30
- Phantom: Twin-SAM; Type: QD 000 P41 Ax; Serial: 2020
- Measurement SW: DASY52, Version 52.10 (4); SEMCAD X Version 14.6.14 (7483)

Ch38000/Area Scan (81x111x1): Interpolated grid: dx=1.200 mm, dy=1.200 mm

Maximum value of SAR (interpolated) = 0.0176 W/kg

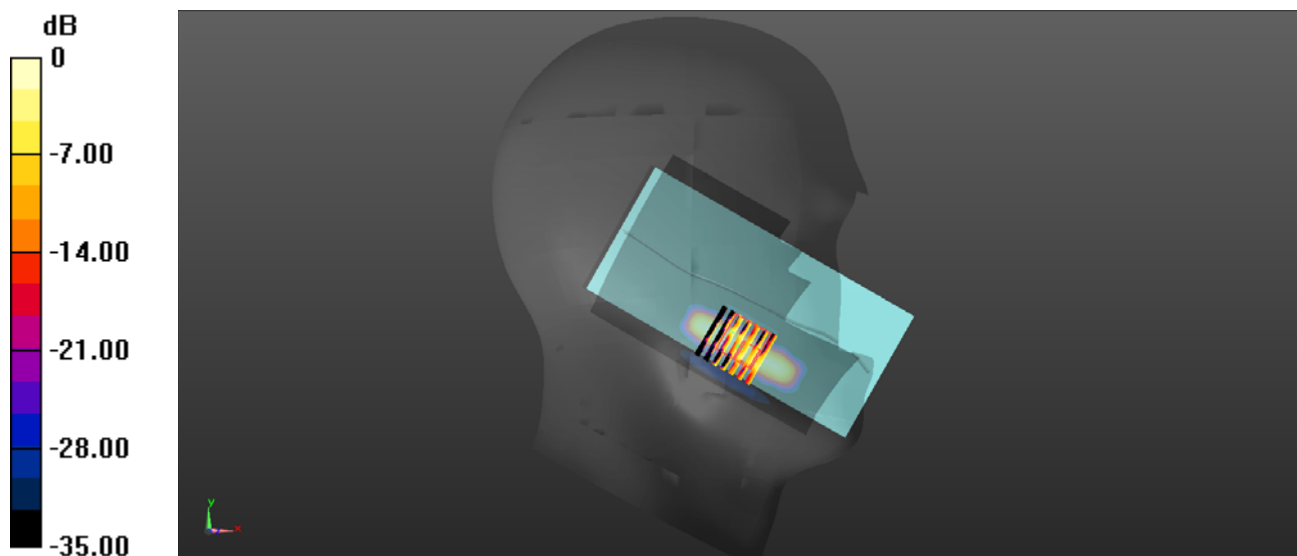
Ch38000/Zoom Scan (7x7x7)/Cube 0: Measurement grid: dx=5mm, dy=5mm, dz=5mm

Reference Value = 0 V/m; Power Drift = 0.02 dB

Peak SAR (extrapolated) = 0.0290 W/kg

SAR(1 g) = 0.008 W/kg; SAR(10 g) = 0.00295 W/kg

Maximum value of SAR (measured) = 0.0167 W/kg



0 dB = 0.0167 W/kg

WLAN 2.4GHz_802.11b 1Mbps_Left Tilt_Ch13

Communication System: UID 0, WLAN 2.4GHz 802.11b (0); Frequency: 2472 MHz; Duty Cycle: 1:1
Medium: HSL_2450 Medium parameters used: $f = 2472$ MHz; $\sigma = 1.834$ S/m; $\epsilon_r = 38.696$; $\rho = 1000$ kg/m³

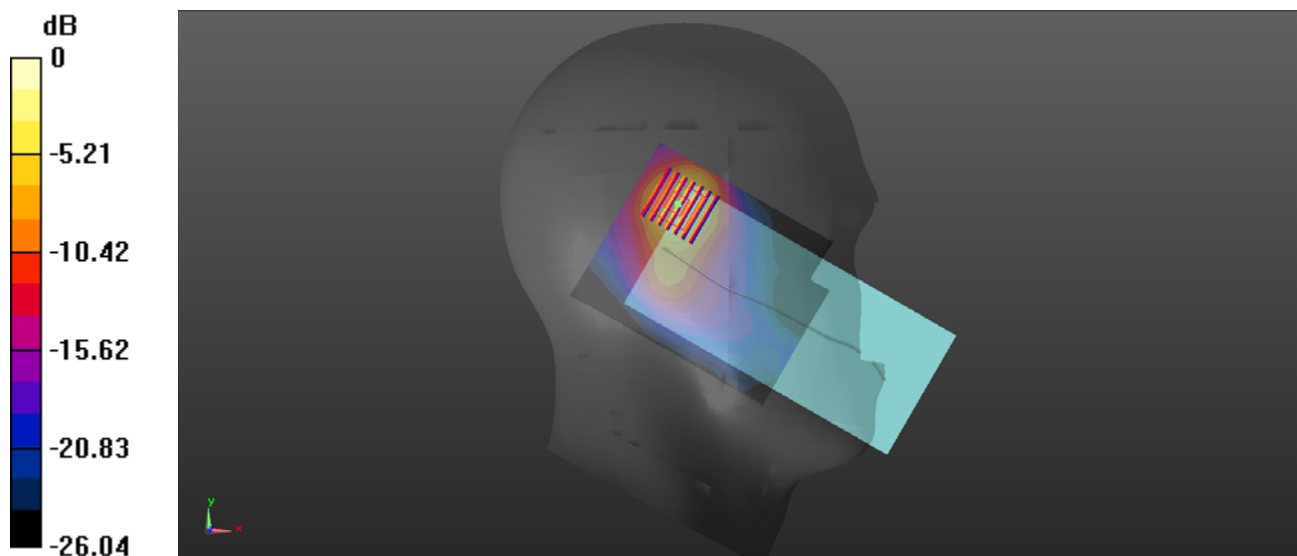
Ambient Temperature : 23.2 °C; Liquid Temperature : 22.1 °C

DASY5 Configuration:

- Probe: EX3DV4 - SN7608; ConvF(7.58, 7.58, 7.58) @ 2472 MHz; Calibrated: 2020.11.27
- Sensor-Surface: 2mm (Mechanical Surface Detection)
- Electronics: DAE4 Sn1643; Calibrated: 2020.11.30
- Phantom: Twin-SAM; Type: QD 000 P41 Ax; Serial: 2020
- Measurement SW: DASY52, Version 52.10 (4); SEMCAD X Version 14.6.14 (7483)

Ch13/Area Scan (81x101x1): Interpolated grid: dx=1.200 mm, dy=1.200 mm
Maximum value of SAR (interpolated) = 1.41 W/kg

Ch13/Zoom Scan (7x7x7)/Cube 0: Measurement grid: dx=5mm, dy=5mm, dz=5mm
Reference Value = 9.389 V/m; Power Drift = 0.04 dB
Peak SAR (extrapolated) = 2.02 W/kg
SAR(1 g) = 0.843 W/kg; SAR(10 g) = 0.349 W/kg
Maximum value of SAR (measured) = 1.42 W/kg



0 dB = 1.42 W/kg

GSM850_GPRS(2 TX slots)_Back Side_10mm_Ch189

Communication System: UID 0, GSM850(class 10) (0); Frequency: 836.4 MHz; Duty Cycle: 1:4.15
Medium: HSL_835 Medium parameters used: $f = 836.4$ MHz; $\sigma = 0.943$ S/m; $\epsilon_r = 42.978$; $\rho = 1000$ kg/m³

Ambient Temperature : 23.2 °C; Liquid Temperature : 22.1 °C

DASY5 Configuration:

- Probe: EX3DV4 - SN7608; ConvF(9.57, 9.57, 9.57) @ 836.4 MHz; Calibrated: 2020.11.27
- Sensor-Surface: 2mm (Mechanical Surface Detection)
- Electronics: DAE4 Sn1643; Calibrated: 2020.11.30
- Phantom: Twin-SAM; Type: QD 000 P41 Ax; Serial: 2020
- Measurement SW: DASY52, Version 52.10 (4); SEMCAD X Version 14.6.14 (7483)

Ch189/Area Scan (71x121x1): Interpolated grid: dx=1.500 mm, dy=1.500 mm

Maximum value of SAR (interpolated) = 0.560 W/kg

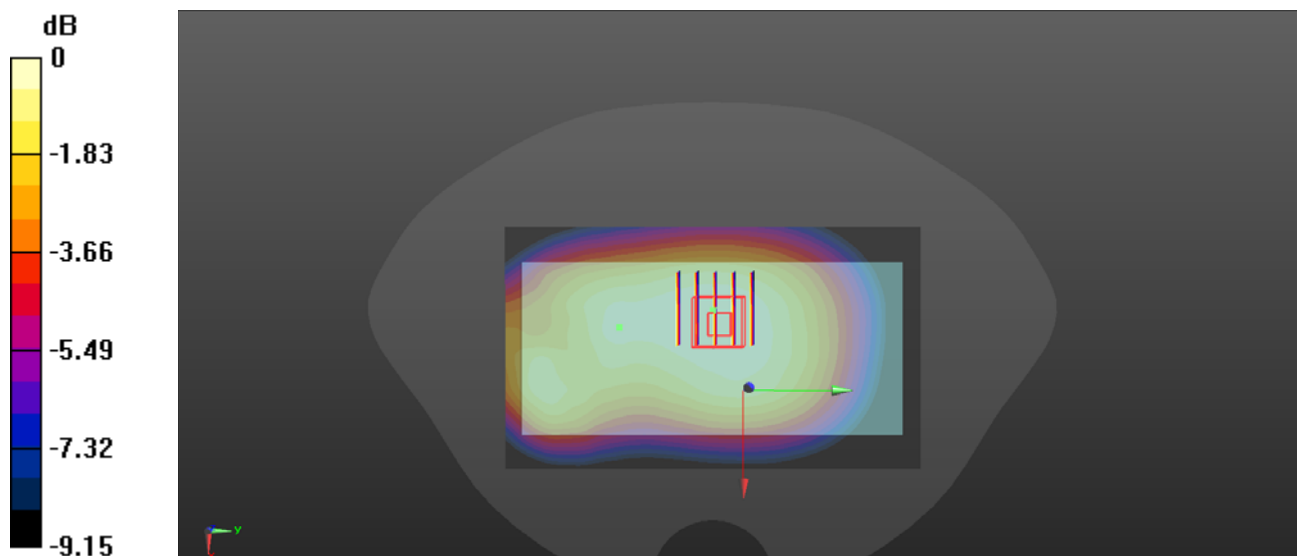
Ch189/Zoom Scan (5x5x7)/Cube 0: Measurement grid: dx=8mm, dy=8mm, dz=5mm

Reference Value = 23.50 V/m; Power Drift = -0.04 dB

Peak SAR (extrapolated) = 0.625 W/kg

SAR(1 g) = 0.480 W/kg; SAR(10 g) = 0.362 W/kg

Maximum value of SAR (measured) = 0.555 W/kg



0 dB = 0.555 W/kg

GSM1900_GPRS(3 TX slots)_Back Side_10mm_Ch661

Communication System: UID 0, GSM1900(class 11) (0); Frequency: 1880 MHz; Duty Cycle: 1:2.77
Medium: HSL_1900 Medium parameters used: $f = 1880$ MHz; $\sigma = 1.321$ S/m; $\epsilon_r = 39.882$; $\rho = 1000$ kg/m³

Ambient Temperature : 23.2 °C; Liquid Temperature : 22.4 °C

DASY5 Configuration:

- Probe: EX3DV4 - SN7608; ConvF(8.04, 8.04, 8.04) @ 1880 MHz; Calibrated: 2020.11.27
- Sensor-Surface: 2mm (Mechanical Surface Detection)
- Electronics: DAE4 Sn1643; Calibrated: 2020.11.30
- Phantom: Twin-SAM; Type: QD 000 P41 Ax; Serial: 2020
- Measurement SW: DASY52, Version 52.10 (4); SEMCAD X Version 14.6.14 (7483)

Ch661/Area Scan (71x101x1): Interpolated grid: dx=1.500 mm, dy=1.500 mm

Maximum value of SAR (interpolated) = 0.146 W/kg

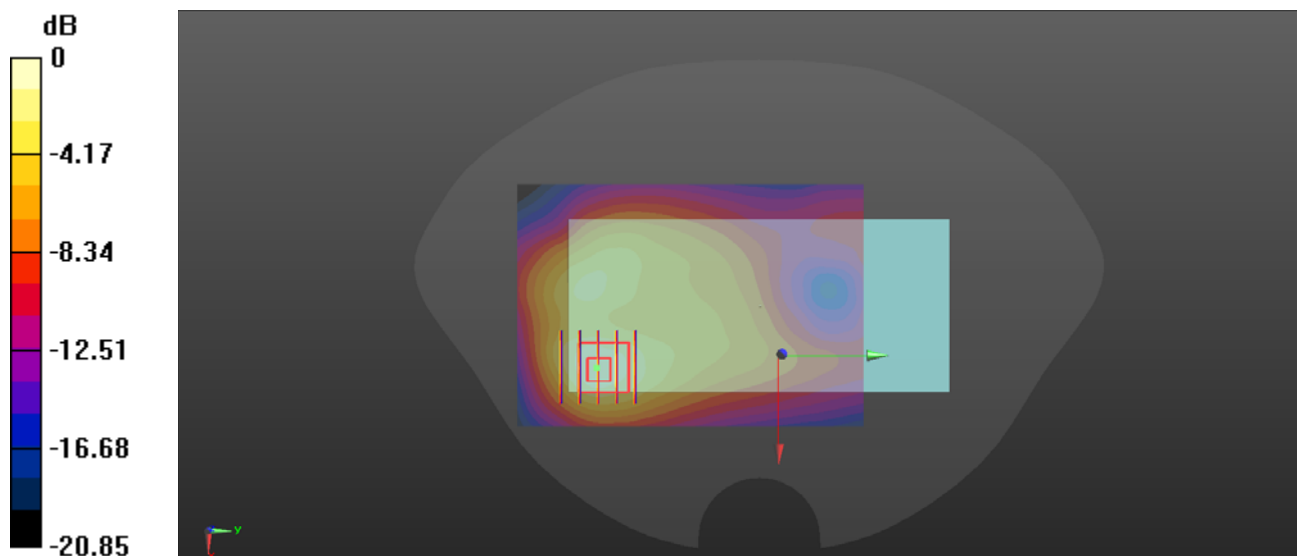
Ch661/Zoom Scan (5x5x7)/Cube 0: Measurement grid: dx=8mm, dy=8mm, dz=5mm

Reference Value = 3.712 V/m; Power Drift = 0.09 dB

Peak SAR (extrapolated) = 0.194 W/kg

SAR(1 g) = 0.104 W/kg; SAR(10 g) = 0.055 W/kg

Maximum value of SAR (measured) = 0.150 W/kg



0 dB = 0.150 W/kg

WCDMA Band II_RMC 12.2Kbps_Back Side_10mm_Ch9538

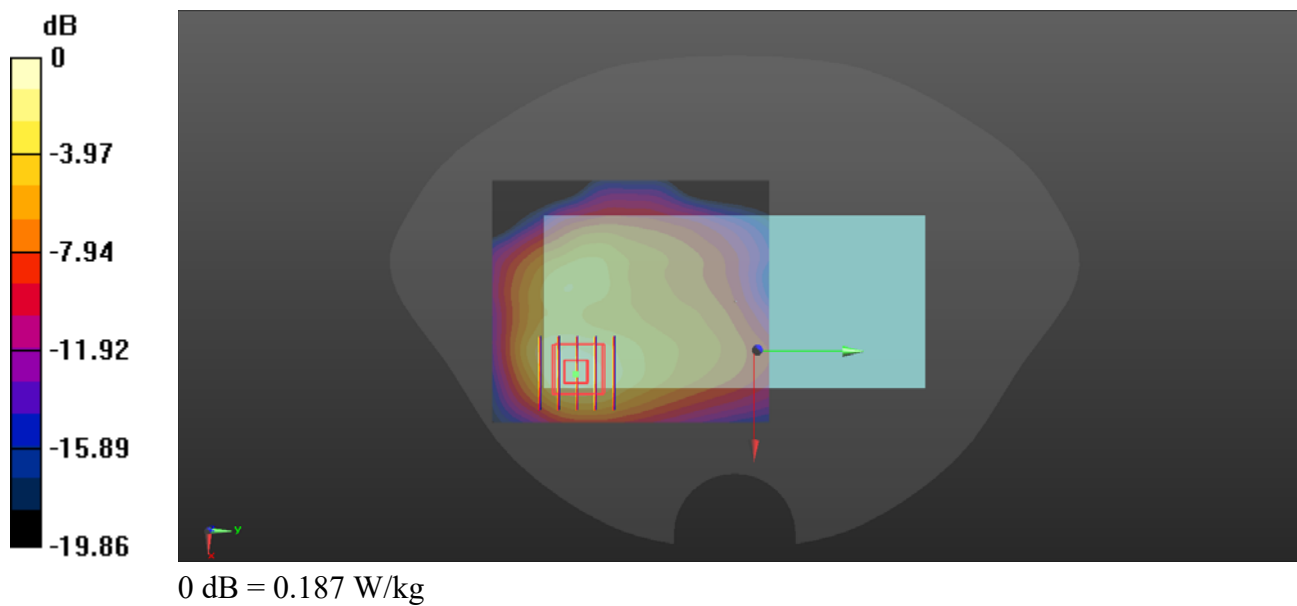
Communication System: UID 0, UMTS-FDD (0); Frequency: 1907.6 MHz; Duty Cycle: 1:1
Medium: HSL_1900 Medium parameters used: $f = 1908$ MHz; $\sigma = 1.32$ S/m; $\epsilon_r = 39.631$; $\rho = 1000$ kg/m³
Ambient Temperature : 23.2 °C; Liquid Temperature : 22.4 °C

DASY5 Configuration:

- Probe: EX3DV4 - SN7608; ConvF(8.04, 8.04, 8.04) @ 1907.6 MHz; Calibrated: 2020.11.27
- Sensor-Surface: 2mm (Mechanical Surface Detection)
- Electronics: DAE4 Sn1643; Calibrated: 2020.11.30
- Phantom: Twin-SAM; Type: QD 000 P41 Ax; Serial: 2020
- Measurement SW: DASY52, Version 52.10 (4); SEMCAD X Version 14.6.14 (7483)

Ch9538/Area Scan (71x81x1): Interpolated grid: dx=1.500 mm, dy=1.500 mm
Maximum value of SAR (interpolated) = 0.177 W/kg

Ch9538/Zoom Scan (5x5x7)/Cube 0: Measurement grid: dx=8mm, dy=8mm, dz=5mm
Reference Value = 3.685 V/m; Power Drift = 0.02 dB
Peak SAR (extrapolated) = 0.244 W/kg
SAR(1 g) = 0.132 W/kg; SAR(10 g) = 0.070 W/kg
Maximum value of SAR (measured) = 0.187 W/kg



WCDMA Band IV_RMC 12.2Kbps_Back Side_10mm_Ch1513

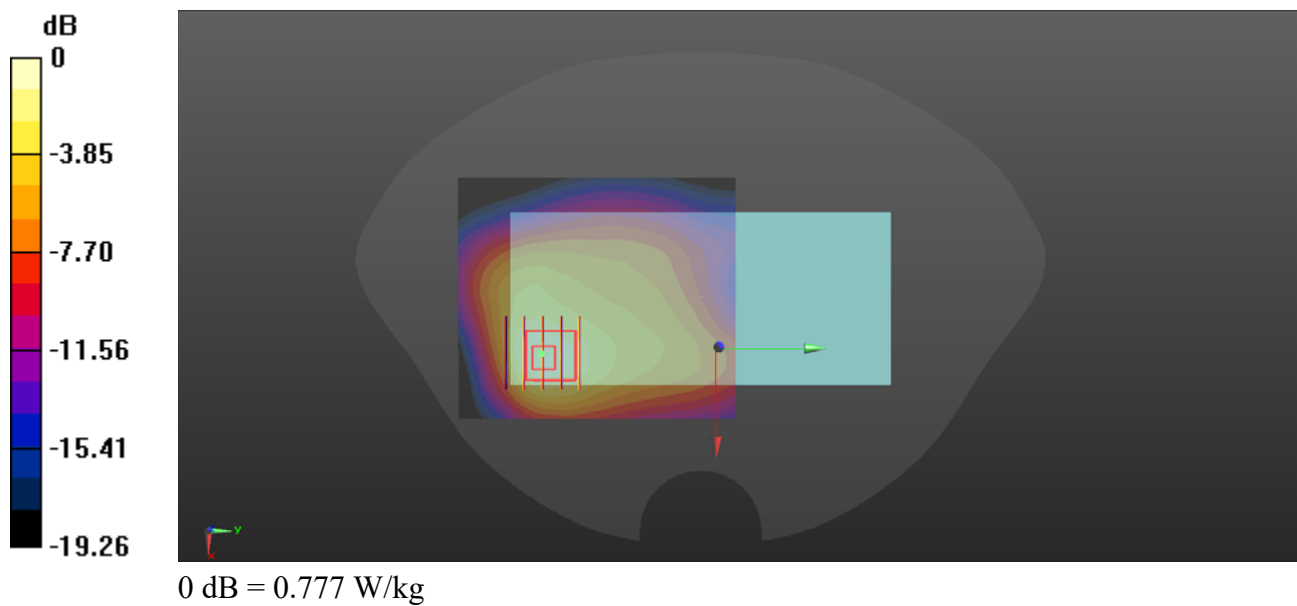
Communication System: UID 0, UMTS-FDD (0); Frequency: 1752.6 MHz; Duty Cycle: 1:1
Medium: HSL_1750 Medium parameters used: $f = 1753$ MHz; $\sigma = 1.454$ S/m; $\epsilon_r = 39.5$; $\rho = 1000$ kg/m³
Ambient Temperature : 23.2 °C; Liquid Temperature : 22.4 °C

DASY5 Configuration:

- Probe: EX3DV4 - SN7608; ConvF(8.32, 8.32, 8.32) @ 1752.6 MHz; Calibrated: 2020.11.27
- Sensor-Surface: 2mm (Mechanical Surface Detection)
- Electronics: DAE4 Sn1643; Calibrated: 2020.11.30
- Phantom: Twin-SAM; Type: QD 000 P41 Ax; Serial: 2020
- Measurement SW: DASY52, Version 52.10 (4); SEMCAD X Version 14.6.14 (7483)

Ch1513/Area Scan (71x81x1): Interpolated grid: dx=1.500 mm, dy=1.500 mm
Maximum value of SAR (interpolated) = 0.819 W/kg

Ch1513/Zoom Scan (5x5x7)/Cube 0: Measurement grid: dx=8mm, dy=8mm, dz=5mm
Reference Value = 8.126 V/m; Power Drift = -0.06 dB
Peak SAR (extrapolated) = 0.977 W/kg
SAR(1 g) = 0.566 W/kg; SAR(10 g) = 0.316 W/kg
Maximum value of SAR (measured) = 0.777 W/kg



WCDMA Band V_RMC 12.2Kbps_Back Side_10mm_Ch4233

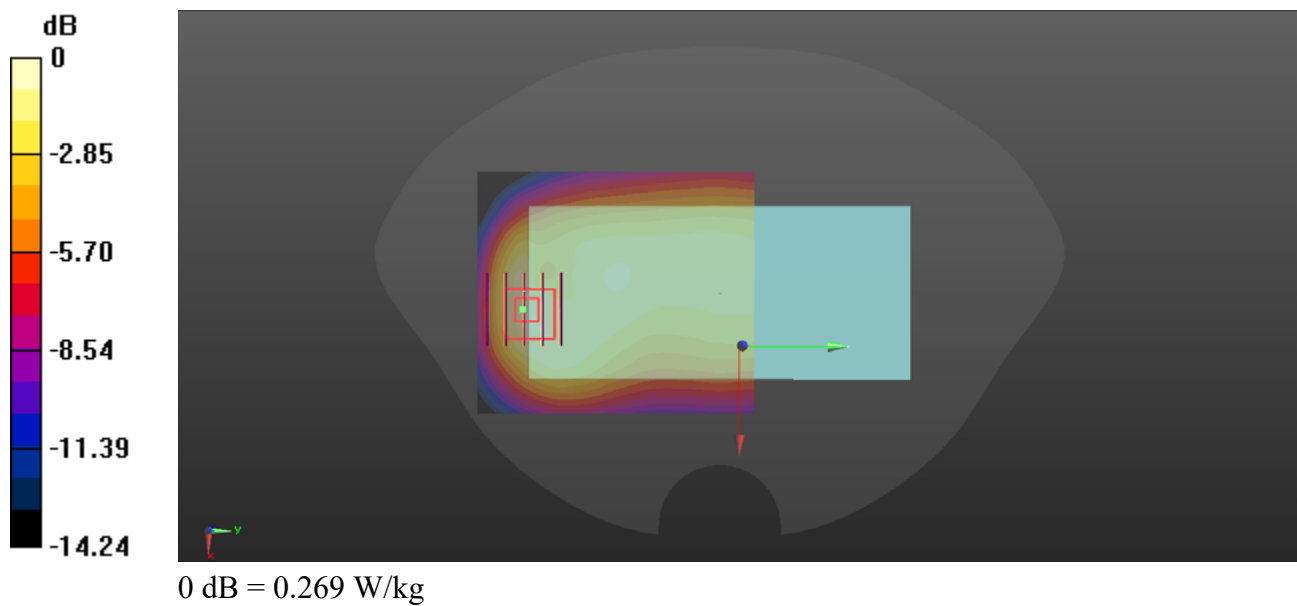
Communication System: UID 0, UMTS-FDD (0); Frequency: 846.6 MHz; Duty Cycle: 1:1
Medium: HSL_835 Medium parameters used: $f = 847$ MHz; $\sigma = 0.959$ S/m; $\epsilon_r = 43.168$; $\rho = 1000$ kg/m³
Ambient Temperature : 23.2 °C; Liquid Temperature : 22.1 °C

DASY5 Configuration:

- Probe: EX3DV4 - SN7608; ConvF(9.57, 9.57, 9.57) @ 846.6 MHz; Calibrated: 2020.11.27
- Sensor-Surface: 2mm (Mechanical Surface Detection)
- Electronics: DAE4 Sn1643; Calibrated: 2020.11.30
- Phantom: Twin-SAM; Type: QD 000 P41 Ax; Serial: 2020
- Measurement SW: DASY52, Version 52.10 (4); SEMCAD X Version 14.6.14 (7483)

Ch4233/Area Scan (71x81x1): Interpolated grid: dx=1.500 mm, dy=1.500 mm
Maximum value of SAR (interpolated) = 0.253 W/kg

Ch4233/Zoom Scan (5x5x7)/Cube 0: Measurement grid: dx=8mm, dy=8mm, dz=5mm
Reference Value = 13.52 V/m; Power Drift = 0.04 dB
Peak SAR (extrapolated) = 0.349 W/kg
SAR(1 g) = 0.199 W/kg; SAR(10 g) = 0.114 W/kg
Maximum value of SAR (measured) = 0.269 W/kg



LTE Band 2_20MHz_QPSK_1RB_0Offset_Back Side_10mm_Ch18900

Communication System: UID 0, LTE (0); Frequency: 1880 MHz; Duty Cycle: 1:1

Medium: HSL_1900 Medium parameters used: $f = 1880$ MHz; $\sigma = 1.321$ S/m; $\epsilon_r = 39.882$; $\rho = 1000$ kg/m³

Ambient Temperature : 23.2 °C; Liquid Temperature : 22.4 °C

DASY5 Configuration:

- Probe: EX3DV4 - SN7608; ConvF(8.04, 8.04, 8.04) @ 1880 MHz; Calibrated: 2020.11.27
- Sensor-Surface: 2mm (Mechanical Surface Detection)
- Electronics: DAE4 Sn1643; Calibrated: 2020.11.30
- Phantom: Twin-SAM; Type: QD 000 P41 Ax; Serial: 2020
- Measurement SW: DASY52, Version 52.10 (4); SEMCAD X Version 14.6.14 (7483)

Ch18900/Area Scan (61x101x1): Interpolated grid: dx=1.500 mm, dy=1.500 mm

Maximum value of SAR (interpolated) = 0.201 W/kg

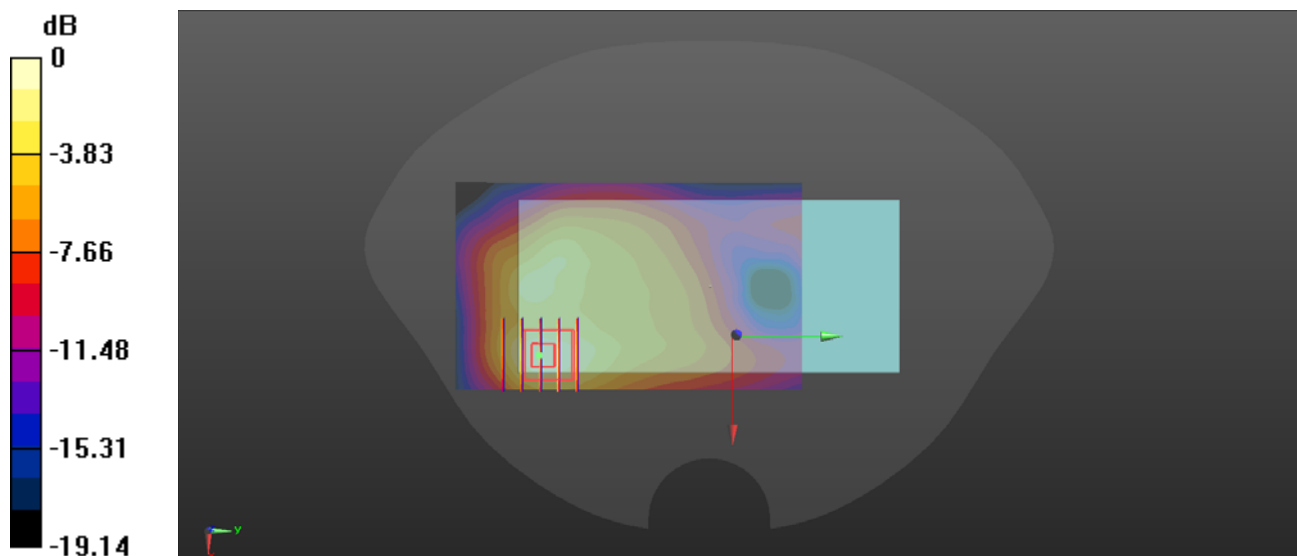
Ch18900/Zoom Scan (5x5x7)/Cube 0: Measurement grid: dx=8mm, dy=8mm, dz=5mm

Reference Value = 3.759 V/m; Power Drift = 0.01 dB

Peak SAR (extrapolated) = 0.257 W/kg

SAR(1 g) = 0.139 W/kg; SAR(10 g) = 0.074 W/kg

Maximum value of SAR (measured) = 0.200 W/kg



0 dB = 0.200 W/kg

LTE Band 4_20MHz_QPSK_1RB_0Offset_Back Side_10mm_Ch20175

Communication System: UID 0, LTE (0); Frequency: 1732.5 MHz; Duty Cycle: 1:1

Medium: HSL_1750 Medium parameters used: $f = 1733$ MHz; $\sigma = 1.412$ S/m; $\epsilon_r = 39.814$; $\rho = 1000$ kg/m³

Ambient Temperature : 23.2 °C; Liquid Temperature : 22.4 °C

DASY5 Configuration:

- Probe: EX3DV4 - SN7608; ConvF(8.32, 8.32, 8.32) @ 1732.5 MHz; Calibrated: 2020.11.27
- Sensor-Surface: 2mm (Mechanical Surface Detection)
- Electronics: DAE4 Sn1643; Calibrated: 2020.11.30
- Phantom: Twin-SAM; Type: QD 000 P41 Ax; Serial: 2020
- Measurement SW: DASY52, Version 52.10 (4); SEMCAD X Version 14.6.14 (7483)

Ch20175/Area Scan (71x101x1): Interpolated grid: dx=1.500 mm, dy=1.500 mm

Maximum value of SAR (interpolated) = 0.407 W/kg

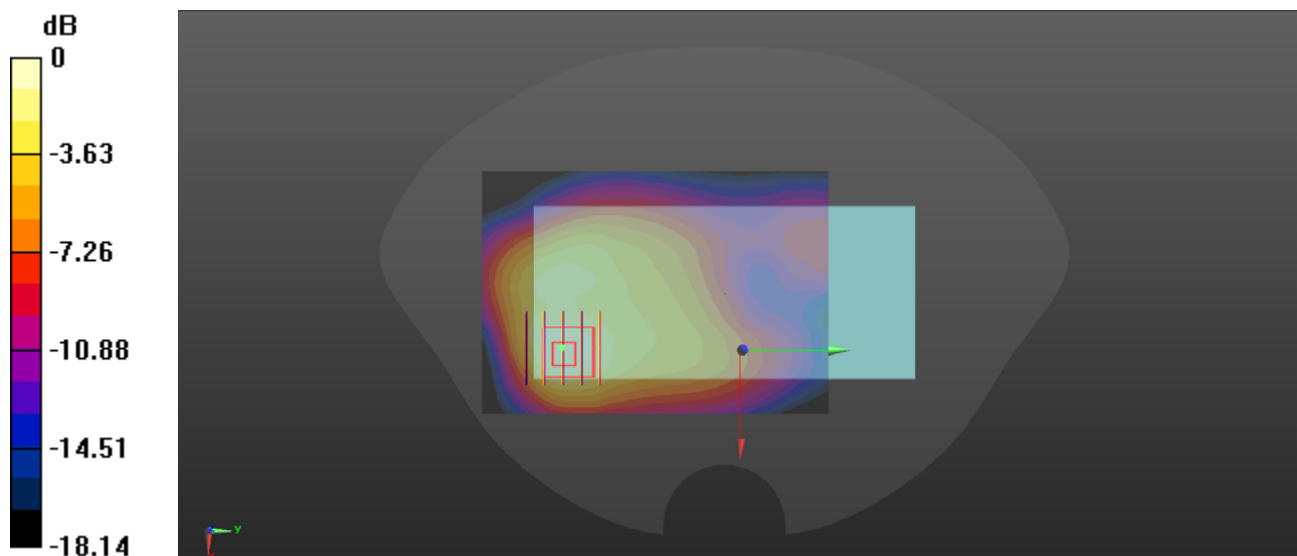
Ch20175/Zoom Scan (5x5x7)/Cube 0: Measurement grid: dx=8mm, dy=8mm, dz=5mm

Reference Value = 5.701 V/m; Power Drift = -0.06 dB

Peak SAR (extrapolated) = 0.485 W/kg

SAR(1 g) = 0.277 W/kg; SAR(10 g) = 0.154 W/kg

Maximum value of SAR (measured) = 0.379 W/kg



0 dB = 0.379 W/kg

LTE Band 5_10MHz_QPSK_1RB_0Offset_Back Side_10mm_Ch20525

Communication System: UID 0, LTE (0); Frequency: 836.5 MHz; Duty Cycle: 1:1

Medium: HSL_835 Medium parameters used: $f = 836.5$ MHz; $\sigma = 0.943$ S/m; $\epsilon_r = 42.967$; $\rho = 1000$ kg/m³

Ambient Temperature : 23.2 °C; Liquid Temperature : 22.1 °C

DASY5 Configuration:

- Probe: EX3DV4 - SN7608; ConvF(9.57, 9.57, 9.57) @ 836.5 MHz; Calibrated: 2020.11.27
- Sensor-Surface: 2mm (Mechanical Surface Detection)
- Electronics: DAE4 Sn1643; Calibrated: 2020.11.30
- Phantom: Twin-SAM; Type: QD 000 P41 Ax; Serial: 2020
- Measurement SW: DASY52, Version 52.10 (4); SEMCAD X Version 14.6.14 (7483)

Ch20525/Area Scan (61x101x1): Interpolated grid: dx=1.500 mm, dy=1.500 mm

Maximum value of SAR (interpolated) = 0.312 W/kg

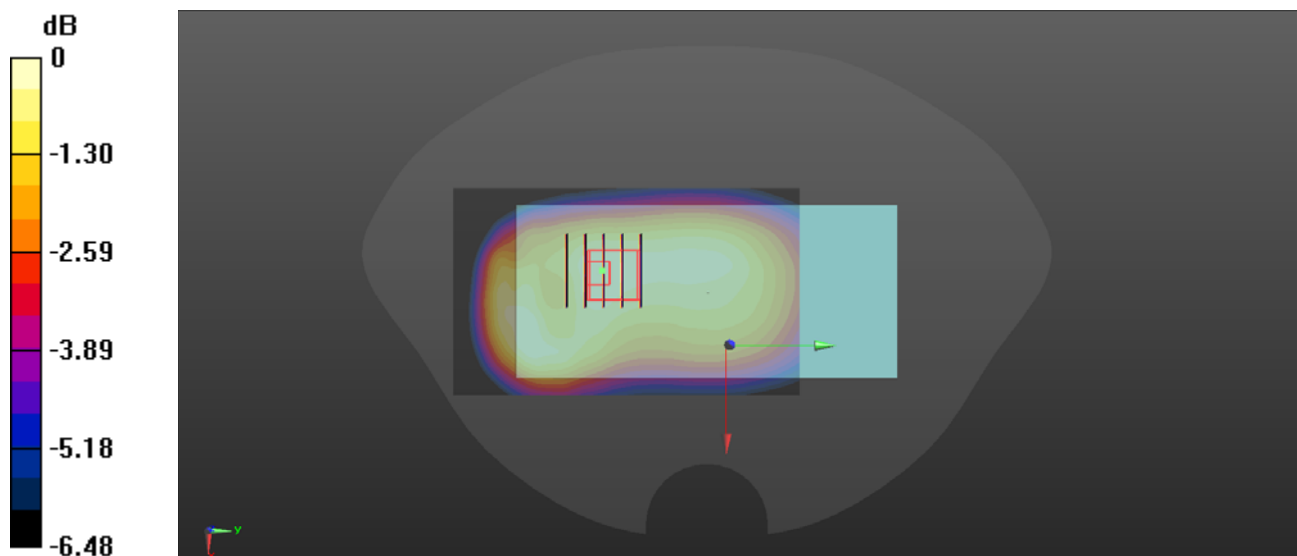
Ch20525/Zoom Scan (5x5x7)/Cube 0: Measurement grid: dx=8mm, dy=8mm, dz=5mm

Reference Value = 16.32 V/m; Power Drift = -0.05 dB

Peak SAR (extrapolated) = 0.348 W/kg

SAR(1 g) = 0.262 W/kg; SAR(10 g) = 0.191 W/kg

Maximum value of SAR (measured) = 0.307 W/kg



0 dB = 0.307 W/kg

LTE Band 7_20MHz_QPSK_1RB_0Offset_Back Side_10mm_Ch21100

Communication System: UID 0, LTE (0); Frequency: 2535 MHz; Duty Cycle: 1:1

Medium: HSL_2600 Medium parameters used: $f = 2535$ MHz; $\sigma = 1.911$ S/m; $\epsilon_r = 38.489$; $\rho = 1000$ kg/m³

Ambient Temperature : 23.2 °C; Liquid Temperature : 22.2 °C

DASY5 Configuration:

- Probe: EX3DV4 - SN7608; ConvF(7.4, 7.4, 7.4) @ 2535 MHz; Calibrated: 2020.11.27
- Sensor-Surface: 2mm (Mechanical Surface Detection)
- Electronics: DAE4 Sn1643; Calibrated: 2020.11.30
- Phantom: Twin-SAM; Type: QD 000 P41 Ax; Serial: 2020
- Measurement SW: DASY52, Version 52.10 (4); SEMCAD X Version 14.6.14 (7483)

Ch21100/Area Scan (61x101x1): Interpolated grid: dx=1.200 mm, dy=1.200 mm

Maximum value of SAR (interpolated) = 0.423 W/kg

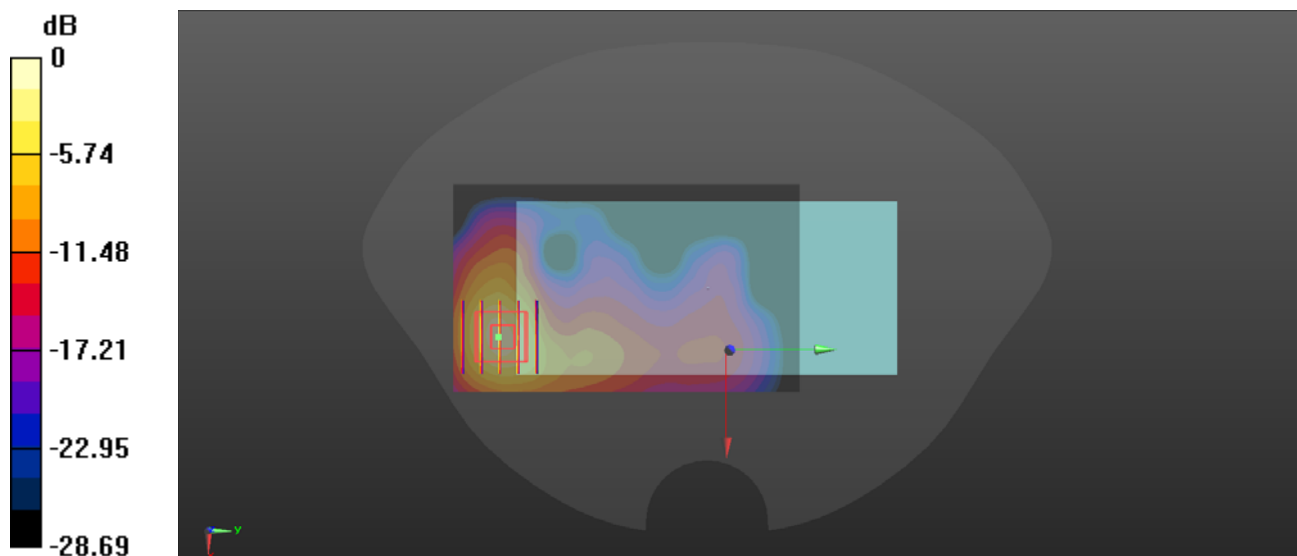
Ch21100/Zoom Scan (5x5x7)/Cube 0: Measurement grid: dx=5mm, dy=5mm, dz=5mm

Reference Value = 2.082 V/m; Power Drift = 0.05 dB

Peak SAR (extrapolated) = 0.726 W/kg

SAR(1 g) = 0.344 W/kg; SAR(10 g) = 0.148 W/kg

Maximum value of SAR (measured) = 0.507 W/kg



0 dB = 0.507 W/kg

LTE Band 7_20MHz_QPSK_1RB_0Offset_Bottom Side_10mm_Ch21100

Communication System: UID 0, LTE (0); Frequency: 2535 MHz; Duty Cycle: 1:1

Medium: HSL_2600 Medium parameters used: $f = 2535$ MHz; $\sigma = 1.911$ S/m; $\epsilon_r = 38.489$; $\rho = 1000$ kg/m³

Ambient Temperature : 23.2 °C; Liquid Temperature : 22.2 °C

DASY5 Configuration:

- Probe: EX3DV4 - SN7608; ConvF(7.4, 7.4, 7.4) @ 2535 MHz; Calibrated: 2020.11.27
- Sensor-Surface: 2mm (Mechanical Surface Detection)
- Electronics: DAE4 Sn1643; Calibrated: 2020.11.30
- Phantom: Twin-SAM; Type: QD 000 P41 Ax; Serial: 2020
- Measurement SW: DASY52, Version 52.10 (4); SEMCAD X Version 14.6.14 (7483)

Ch21100/Area Scan (41x81x1): Interpolated grid: dx=1.200 mm, dy=1.200 mm

Maximum value of SAR (interpolated) = 0.475 W/kg

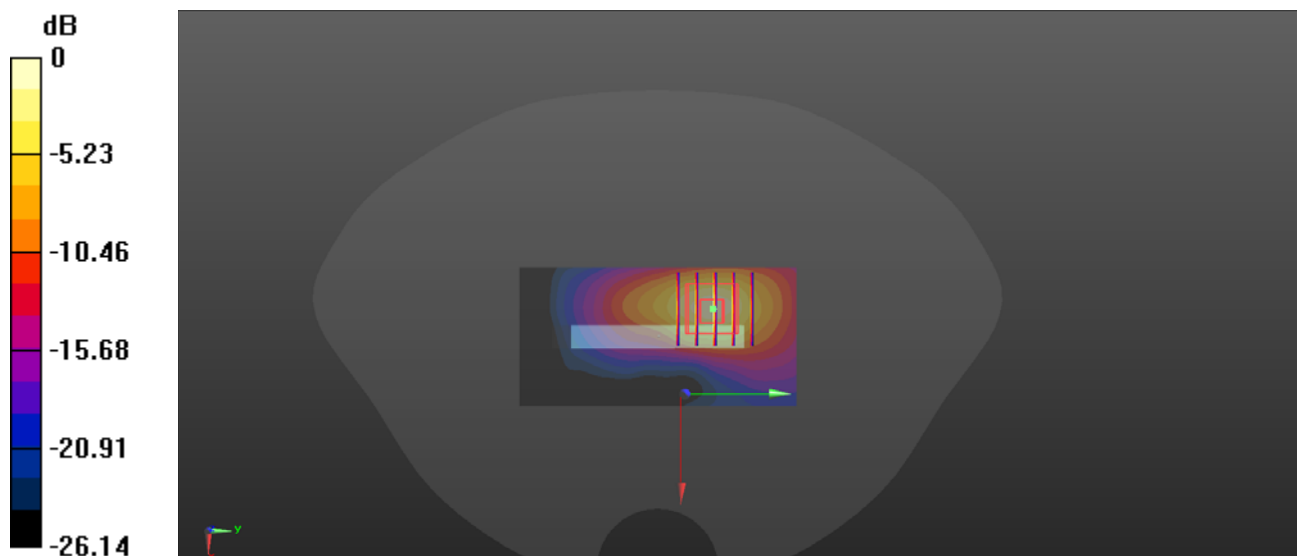
Ch21100/Zoom Scan (5x5x7)/Cube 0: Measurement grid: dx=5mm, dy=5mm, dz=5mm

Reference Value = 3.746 V/m; Power Drift = 0.04 dB

Peak SAR (extrapolated) = 0.757 W/kg

SAR(1 g) = 0.353 W/kg; SAR(10 g) = 0.153 W/kg

Maximum value of SAR (measured) = 0.546 W/kg



0 dB = 0.546 W/kg

LTE Band 12_10MHz_QPSK_1RB_0Offset_Back Side_10mm_Ch23095

Communication System: UID 0, LTE (0); Frequency: 707.5 MHz; Duty Cycle: 1:1

Medium: HSL_835 Medium parameters used: $f = 707.5$ MHz; $\sigma = 0.848$ S/m; $\epsilon_r = 44.777$; $\rho = 1000$ kg/m³

Ambient Temperature : 23.2 °C; Liquid Temperature : 22.1 °C

DASY5 Configuration:

- Probe: EX3DV4 - SN7608; ConvF(9.76, 9.76, 9.76) @ 707.5 MHz; Calibrated: 2020.11.27
- Sensor-Surface: 2mm (Mechanical Surface Detection)
- Electronics: DAE4 Sn1643; Calibrated: 2020.11.30
- Phantom: Twin-SAM; Type: QD 000 P41 Ax; Serial: 2020
- Measurement SW: DASY52, Version 52.10 (4); SEMCAD X Version 14.6.14 (7483)

Ch23095/Area Scan (61x101x1): Interpolated grid: dx=1.500 mm, dy=1.500 mm

Maximum value of SAR (interpolated) = 0.391 W/kg

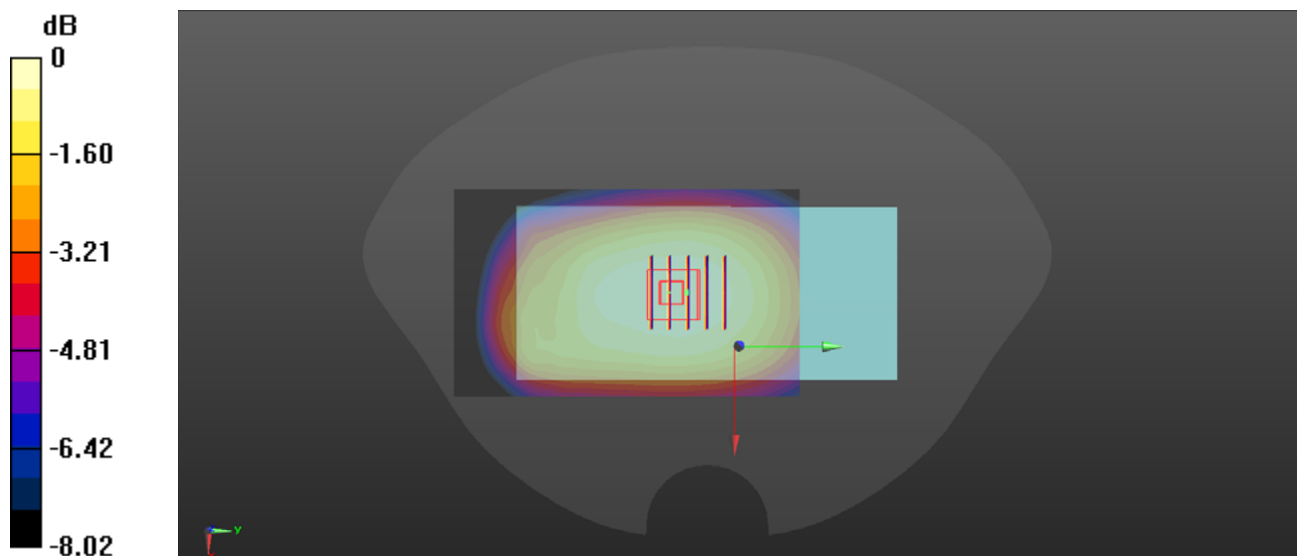
Ch23095/Zoom Scan (5x5x7)/Cube 0: Measurement grid: dx=8mm, dy=8mm, dz=5mm

Reference Value = 18.53 V/m; Power Drift = 0.08 dB

Peak SAR (extrapolated) = 0.443 W/kg

SAR(1 g) = 0.338 W/kg; SAR(10 g) = 0.258 W/kg

Maximum value of SAR (measured) = 0.394 W/kg



LTE Band 38_20MHz_QPSK_1RB_0Offset_Back Side_10mm_Ch38000

Communication System: UID 0, LTE (0); Frequency: 2595 MHz; Duty Cycle: 1:1.59

Medium: HSL_2600 Medium parameters used: $f = 2595$ MHz; $\sigma = 1.98$ S/m; $\epsilon_r = 38.287$; $\rho = 1000$ kg/m³

Ambient Temperature : 23.2 °C; Liquid Temperature : 22.2 °C

DASY5 Configuration:

- Probe: EX3DV4 - SN7608; ConvF(7.4, 7.4, 7.4) @ 2595 MHz; Calibrated: 2020.11.27
- Sensor-Surface: 2mm (Mechanical Surface Detection)
- Electronics: DAE4 Sn1643; Calibrated: 2020.11.30
- Phantom: Twin-SAM; Type: QD 000 P41 Ax; Serial: 2020
- Measurement SW: DASY52, Version 52.10 (4); SEMCAD X Version 14.6.14 (7483)

Ch38000/Area Scan (61x101x1): Interpolated grid: dx=1.200 mm, dy=1.200 mm

Maximum value of SAR (interpolated) = 0.112 W/kg

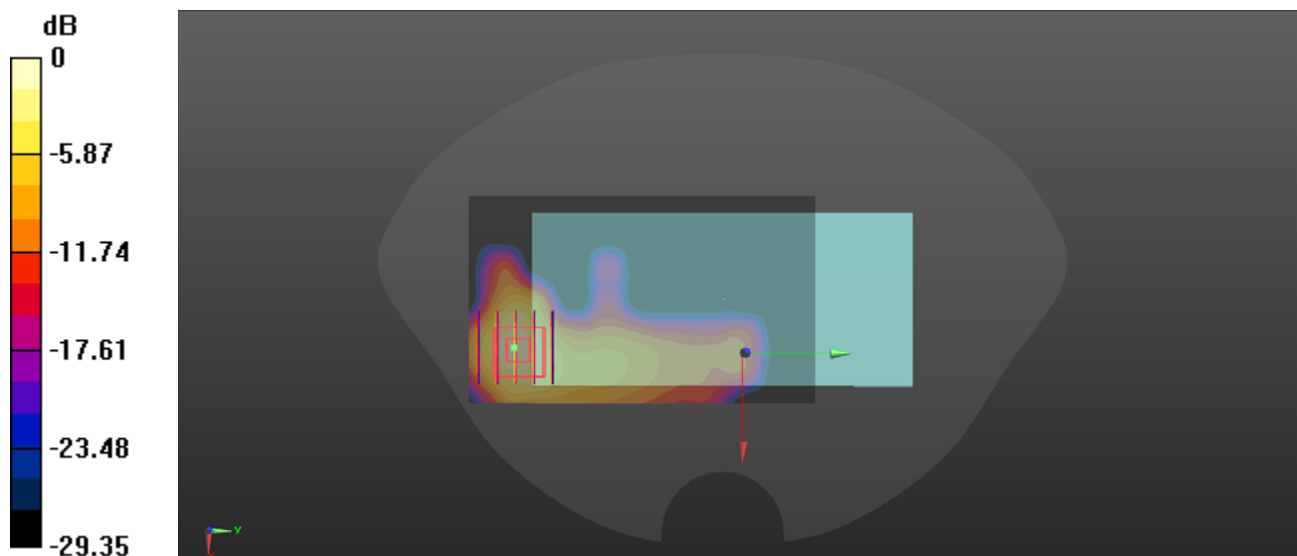
Ch38000/Zoom Scan (5x5x7)/Cube 0: Measurement grid: dx=5mm, dy=5mm, dz=5mm

Reference Value = 0.3400 V/m; Power Drift = 0.09 dB

Peak SAR (extrapolated) = 0.174 W/kg

SAR(1 g) = 0.078 W/kg; SAR(10 g) = 0.032 W/kg

Maximum value of SAR (measured) = 0.118 W/kg



0 dB = 0.118 W/kg

WLAN 2.4GHz_802.11b 1Mbps_Back Side_10mm_Ch1

Communication System: UID 0, WLAN 2.4GHz 802.11b (0); Frequency: 2412 MHz; Duty Cycle: 1:1
Medium: HSL_2450 Medium parameters used: $f = 2412$ MHz; $\sigma = 1.762$ S/m; $\epsilon_r = 38.862$; $\rho = 1000$ kg/m³

Ambient Temperature : 23.2 °C; Liquid Temperature : 22.1 °C

DASY5 Configuration:

- Probe: EX3DV4 - SN7608; ConvF(7.58, 7.58, 7.58) @ 2412 MHz; Calibrated: 2020.11.27
- Sensor-Surface: 2mm (Mechanical Surface Detection)
- Electronics: DAE4 Sn1643; Calibrated: 2020.11.30
- Phantom: Twin-SAM; Type: QD 000 P41 Ax; Serial: 2020
- Measurement SW: DASY52, Version 52.10 (4); SEMCAD X Version 14.6.14 (7483)

Ch1/Area Scan (81x101x1): Interpolated grid: dx=1.200 mm, dy=1.200 mm

Maximum value of SAR (interpolated) = 0.932 W/kg

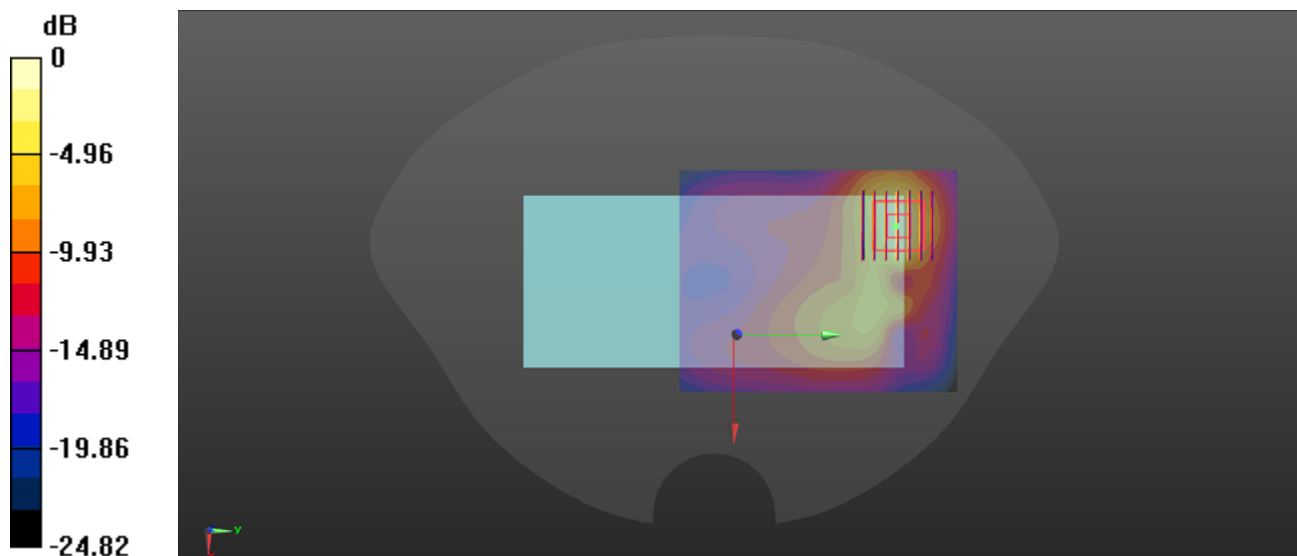
Ch1/Zoom Scan (7x7x7)/Cube 0: Measurement grid: dx=5mm, dy=5mm, dz=5mm

Reference Value = 2.745 V/m; Power Drift = 0.06 dB

Peak SAR (extrapolated) = 1.28 W/kg

SAR(1 g) = 0.599 W/kg; SAR(10 g) = 0.261 W/kg

Maximum value of SAR (measured) = 0.933 W/kg



0 dB = 0.933 W/kg