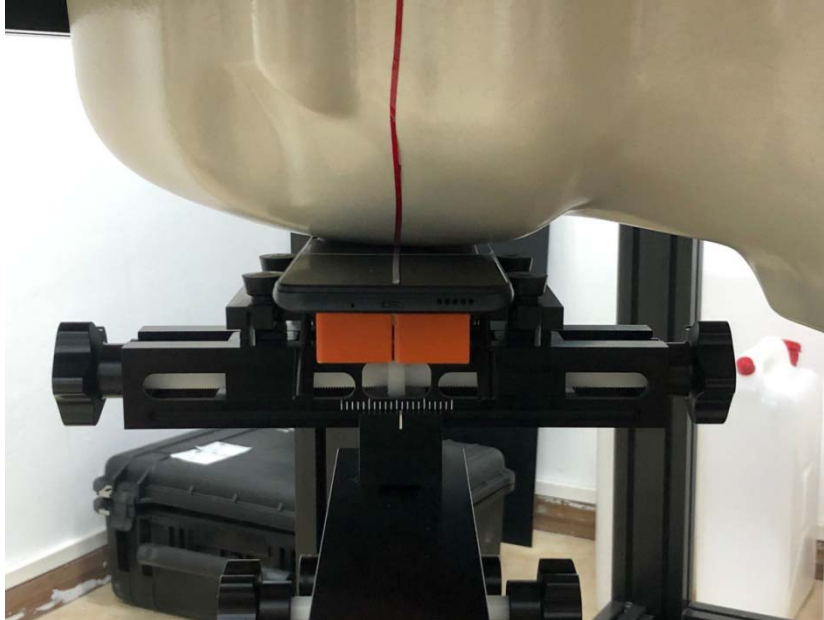
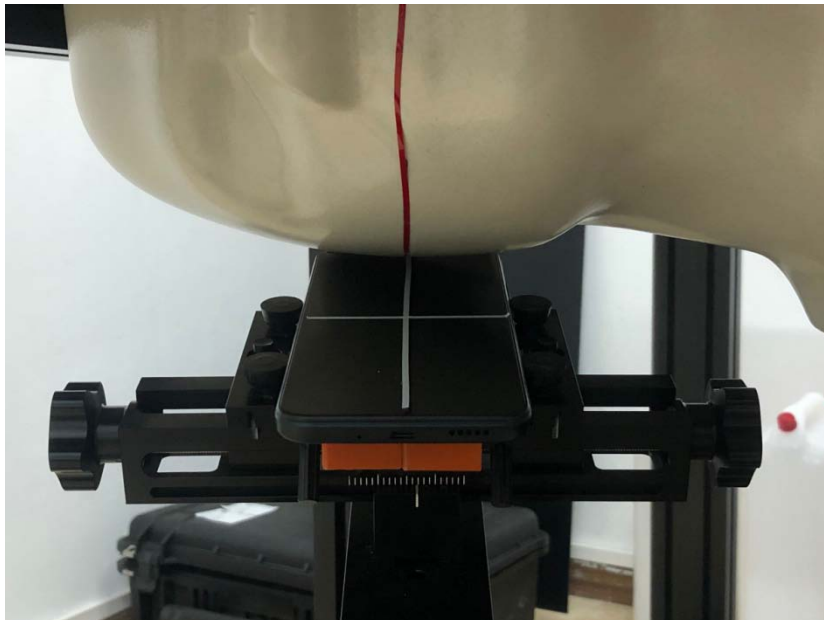


Annex B Test Setup Photos

Head



Right Cheek



Right Tilt

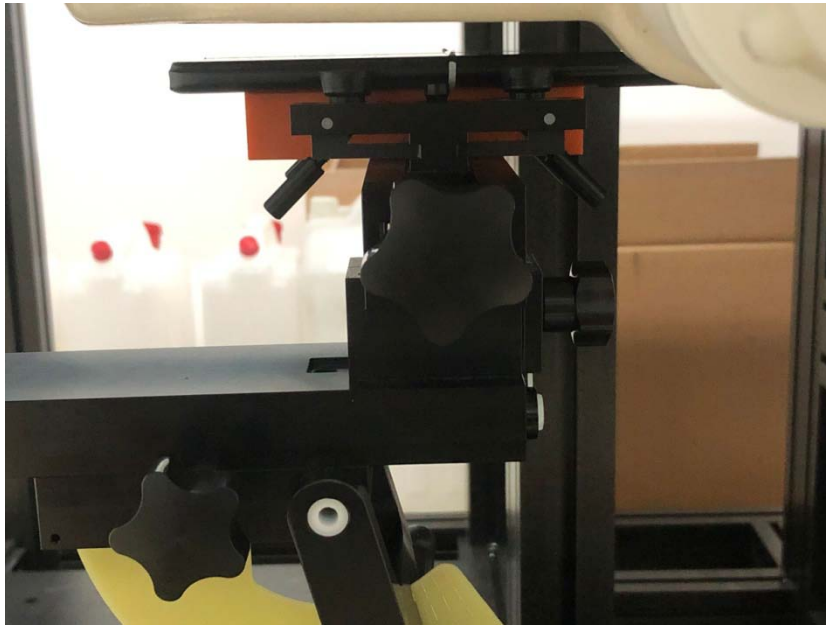


Left Cheek

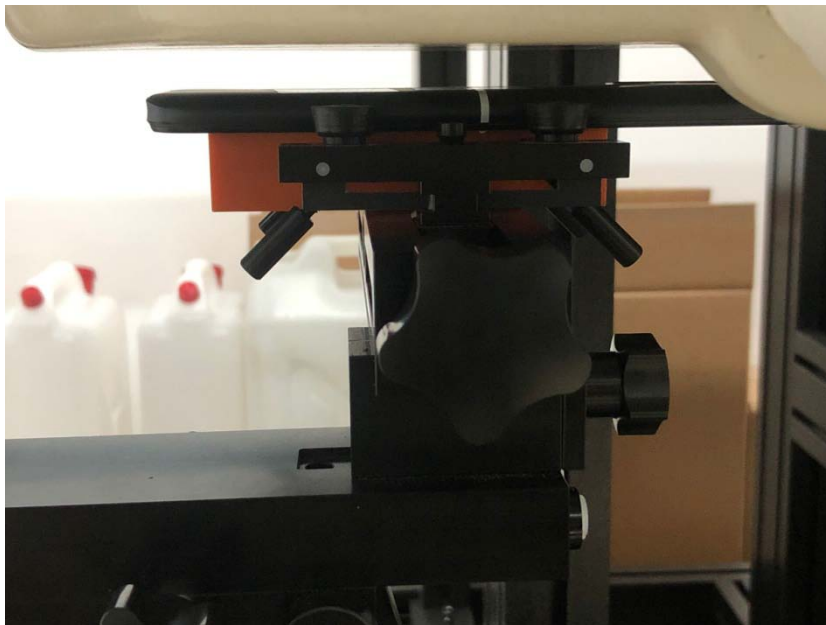


Left Tilt

Body



Front Side (Test distance: 10mm)



Back Side (Test distance: 0mm)



Left Side (Test distance: 10mm)



Right Side (Test distance: 10mm)



Top Side (Test distance: 10mm)



Bottom Side (Test distance: 10mm)