



REPORT No.: SZ23020308S01

Annex D Plots of Maximum SAR Test Results

Test Laboratory: Shenzhen Morlab Communications Technology Co., Ltd.

Date: 2023.04.26

GSM850_GPRS(2 TX slots)_Right Cheek_Ch189

Communication System: UID 0, GSM850(class 10) (0); Frequency: 836.4 MHz; Duty Cycle: 1:4.15
Medium: HSL_900 Medium parameters used: $f = 836.4$ MHz; $\sigma = 0.958$ S/m; $\epsilon_r = 40.843$; $\rho = 1000$ kg/m³

Ambient Temperature : 23.2 °C; Liquid Temperature : 22.2 °C

DASY5 Configuration:

- Probe: EX3DV4 - SN7608; ConvF(10, 10, 10) @ 900 MHz; Calibrated: 2023.03.15
- Sensor-Surface: 2mm (Mechanical Surface Detection)
- Electronics: DAE4 Sn1643; Calibrated: 2023.02.22
- Phantom: Twin-SAM; Type: QD 000 P41 Ax; Serial: 2020
- Measurement SW: DASY52, Version 52.10 (4); SEMCAD X Version 14.6.14 (7483)

Ch189/Area Scan (71x101x1): Interpolated grid: dx=1.500 mm, dy=1.500 mm

Maximum value of SAR (interpolated) = 0.547 W/kg

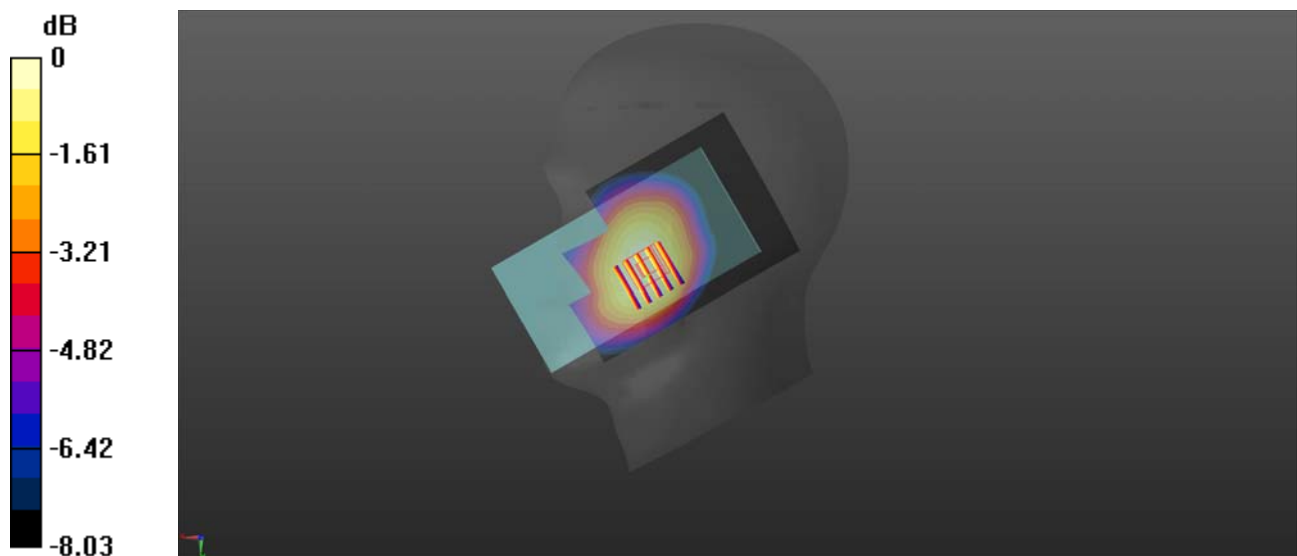
Ch189/Zoom Scan (5x5x7)/Cube 0: Measurement grid: dx=8mm, dy=8mm, dz=5mm

Reference Value = 5.378 V/m; Power Drift = 0.06 dB

Peak SAR (extrapolated) = 0.592 W/kg

SAR(1 g) = 0.487 W/kg; SAR(10 g) = 0.391 W/kg

Maximum value of SAR (measured) = 0.541 W/kg



0 dB = 0.547 W/kg

Test Laboratory: Shenzhen Morlab Communications Technology Co., Ltd.

Date: 2023.04.27

GSM1900_GPRS(3 TX slots)_Right Cheek_Ch661

Communication System: UID 0, GSM1900(class 11) (0); Frequency: 1880 MHz; Duty Cycle: 1:2.77

Medium: HSL_1800 Medium parameters used: $f = 1880$ MHz; $\sigma = 1.351$ S/m; $\epsilon_r = 39.882$; $\rho = 1000$ kg/m³

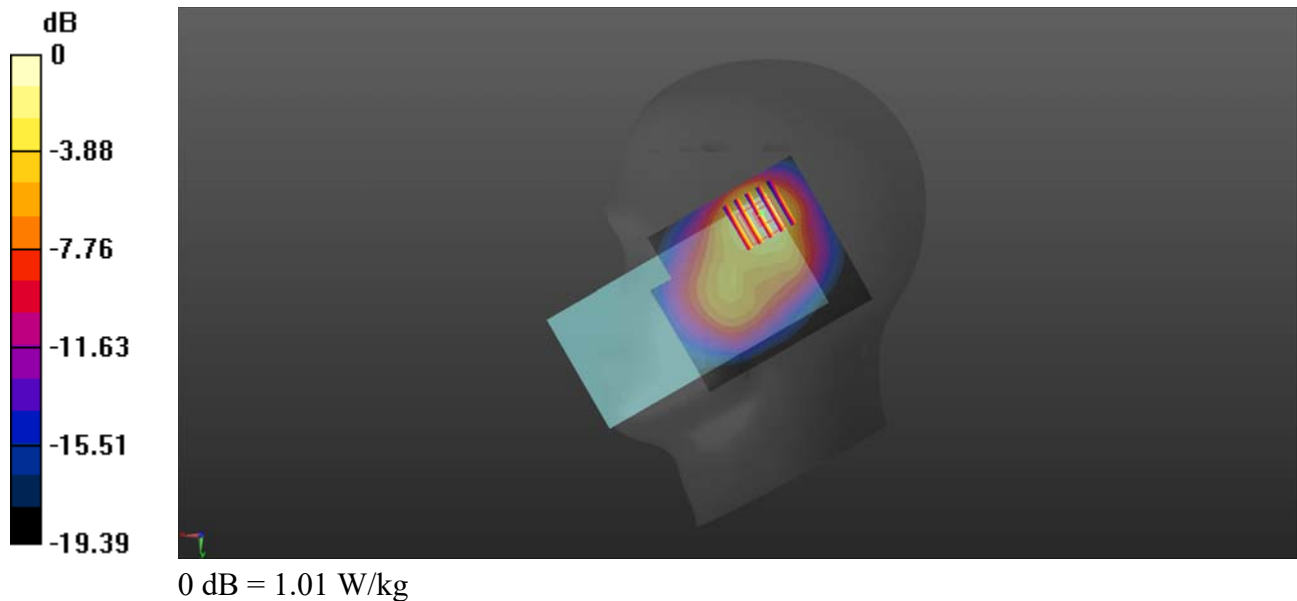
Ambient Temperature : 23.2 °C; Liquid Temperature : 22.3 °C

DASY5 Configuration:

- Probe: EX3DV4 - SN7608; ConvF(8.4, 8.4, 8.4) @ 1880 MHz; Calibrated: 2023.03.15
- Sensor-Surface: 2mm (Mechanical Surface Detection)
- Electronics: DAE4 Sn1643; Calibrated: 2023.02.22
- Phantom: Twin-SAM; Type: QD 000 P41 Ax; Serial: 2020
- Measurement SW: DASY52, Version 52.10 (4); SEMCAD X Version 14.6.14 (7483)

Ch661/Area Scan (71x81x1): Interpolated grid: dx=1.500 mm, dy=1.500 mm
Maximum value of SAR (interpolated) = 1.16 W/kg

Ch661/Zoom Scan (5x5x7)/Cube 0: Measurement grid: dx=8mm, dy=8mm, dz=5mm
Reference Value = 14.92 V/m; Power Drift = -0.03 dB
Peak SAR (extrapolated) = 1.36 W/kg
SAR(1 g) = 0.763 W/kg; SAR(10 g) = 0.438 W/kg
Maximum value of SAR (measured) = 1.01 W/kg



Test Laboratory: Shenzhen Morlab Communications Technology Co., Ltd.

Date: 2023.04.27

WCDMA Band II_RMC 12.2Kbps_Right Cheek_Ch9400

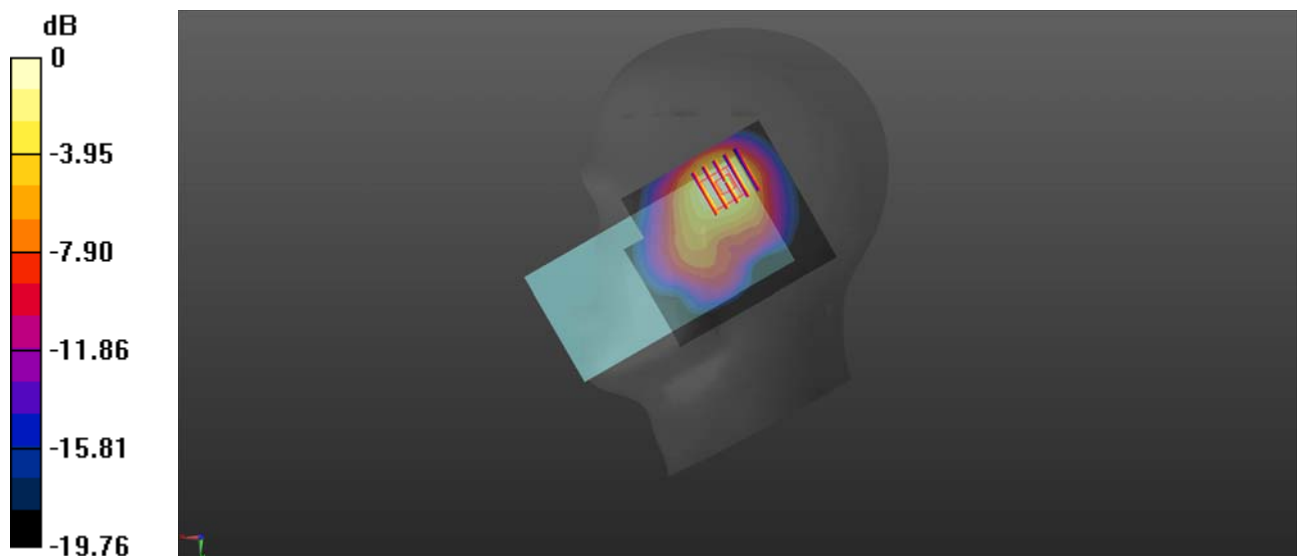
Communication System: UID 0, UMTS-FDD (0); Frequency: 1880 MHz; Duty Cycle: 1:1
Medium: HSL_1800 Medium parameters used: $f = 1880$ MHz; $\sigma = 1.351$ S/m; $\epsilon_r = 39.882$; $\rho = 1000$ kg/m³
Ambient Temperature : 23.2 °C; Liquid Temperature : 22.3 °C

DASY5 Configuration:

- Probe: EX3DV4 - SN7608; ConvF(8.4, 8.4, 8.4) @ 1880 MHz; Calibrated: 2023.03.15
- Sensor-Surface: 2mm (Mechanical Surface Detection)
- Electronics: DAE4 Sn1643; Calibrated: 2023.02.22
- Phantom: Twin-SAM; Type: QD 000 P41 Ax; Serial: 2020
- Measurement SW: DASY52, Version 52.10 (4); SEMCAD X Version 14.6.14 (7483)

Ch9400/Area Scan (71x81x1): Interpolated grid: dx=1.500 mm, dy=1.500 mm
Maximum value of SAR (interpolated) = 0.369 W/kg

Ch9400/Zoom Scan (5x5x7)/Cube 0: Measurement grid: dx=8mm, dy=8mm, dz=5mm
Reference Value = 7.065 V/m; Power Drift = 0.01 dB
Peak SAR (extrapolated) = 0.398 W/kg
SAR(1 g) = 0.245 W/kg; SAR(10 g) = 0.148 W/kg
Maximum value of SAR (measured) = 0.316 W/kg



0 dB = 0.369 W/kg

Test Laboratory: Shenzhen Morlab Communications Technology Co., Ltd.

Date: 2023.04.27

WCDMA Band IV_RMC 12.2Kbps_Right Cheek_Ch1413

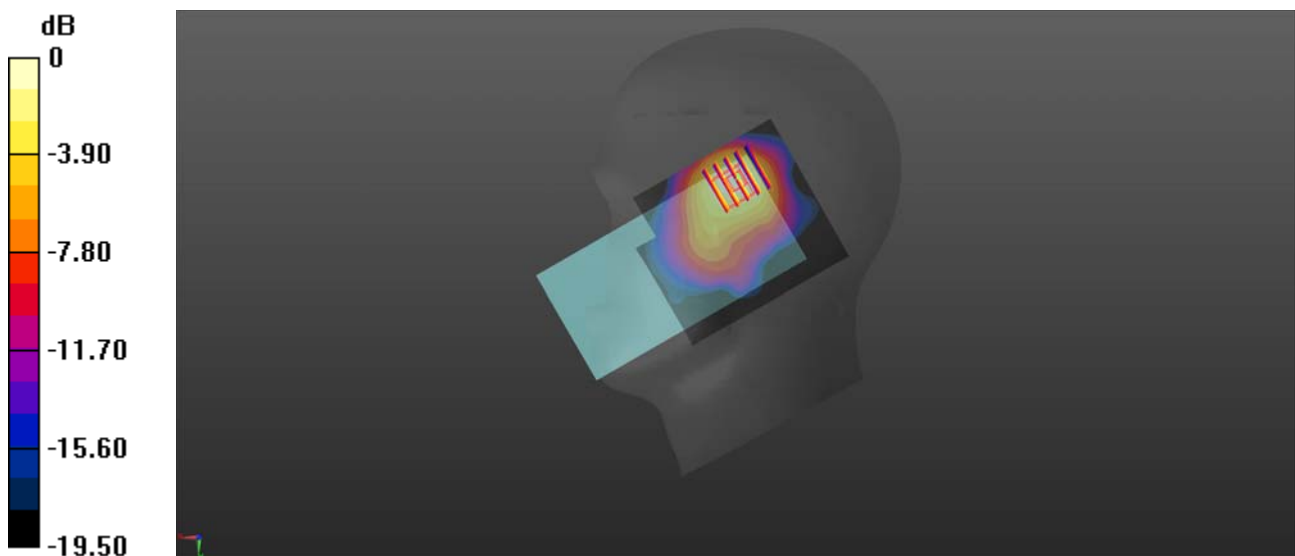
Communication System: UID 0, UMTS-FDD (0); Frequency: 1732.6 MHz; Duty Cycle: 1:1
Medium: HSL_1800 Medium parameters used: $f = 1733$ MHz; $\sigma = 1.366$ S/m; $\epsilon_r = 41.367$; $\rho = 1000$ kg/m³
Ambient Temperature : 23.2 °C; Liquid Temperature : 22.3 °C

DASY5 Configuration:

- Probe: EX3DV4 - SN7608; ConvF(8.4, 8.4, 8.4) @ 1732.6 MHz; Calibrated: 2023.03.15
- Sensor-Surface: 2mm (Mechanical Surface Detection)
- Electronics: DAE4 Sn1643; Calibrated: 2023.02.22
- Phantom: Twin-SAM; Type: QD 000 P41 Ax; Serial: 2020
- Measurement SW: DASY52, Version 52.10 (4); SEMCAD X Version 14.6.14 (7483)

Ch1413/Area Scan (71x81x1): Interpolated grid: dx=1.500 mm, dy=1.500 mm
Maximum value of SAR (interpolated) = 0.275 W/kg

Ch1413/Zoom Scan (5x5x7)/Cube 0: Measurement grid: dx=8mm, dy=8mm, dz=5mm
Reference Value = 5.586 V/m; Power Drift = 0.02 dB
Peak SAR (extrapolated) = 0.292 W/kg
SAR(1 g) = 0.178 W/kg; SAR(10 g) = 0.110 W/kg
Maximum value of SAR (measured) = 0.227 W/kg



0 dB = 0.275 W/kg

Test Laboratory: Shenzhen Morlab Communications Technology Co., Ltd.

Date: 2023.04.26

WCDMA Band V_RMC 12.2Kbps_Right Cheek_Ch4182

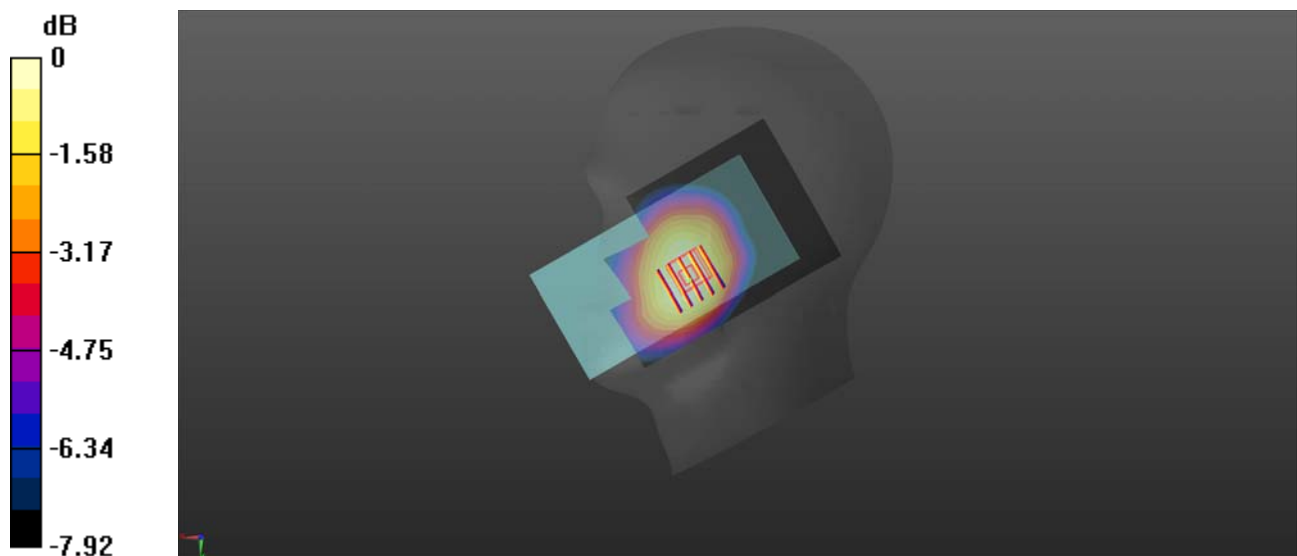
Communication System: UID 0, UMTS-FDD (0); Frequency: 836.4 MHz; Duty Cycle: 1:1
Medium: HSL_900 Medium parameters used: $f = 836.4$ MHz; $\sigma = 0.958$ S/m; $\epsilon_r = 40.843$; $\rho = 1000$ kg/m³
Ambient Temperature : 23.2 °C; Liquid Temperature : 22.2 °C

DASY5 Configuration:

- Probe: EX3DV4 - SN7608; ConvF(10, 10, 10) @ 900 MHz; Calibrated: 2023.03.15
- Sensor-Surface: 2mm (Mechanical Surface Detection)
- Electronics: DAE4 Sn1643; Calibrated: 2023.02.22
- Phantom: Twin-SAM; Type: QD 000 P41 Ax; Serial: 2020
- Measurement SW: DASY52, Version 52.10 (4); SEMCAD X Version 14.6.14 (7483)

Ch4182/Area Scan (71x101x1): Interpolated grid: dx=1.500 mm, dy=1.500 mm
Maximum value of SAR (interpolated) = 0.315 W/kg

Ch4182/Zoom Scan (5x5x7)/Cube 0: Measurement grid: dx=8mm, dy=8mm, dz=5mm
Reference Value = 2.759 V/m; Power Drift = 0.02 dB
Peak SAR (extrapolated) = 0.337 W/kg
SAR(1 g) = 0.277 W/kg; SAR(10 g) = 0.221 W/kg
Maximum value of SAR (measured) = 0.311 W/kg



0 dB = 0.315 W/kg

Test Laboratory: Shenzhen Morlab Communications Technology Co., Ltd.

Date: 2023.04.27

LTE Band 2_20MHz_QPSK_1RB_0Offset_Right Cheek_Ch18900

Communication System: UID 0, LTE (0); Frequency: 1880 MHz; Duty Cycle: 1:1

Medium: HSL_1800 Medium parameters used: $f = 1880$ MHz; $\sigma = 1.351$ S/m; $\epsilon_r = 39.882$; $\rho = 1000$ kg/m³

Ambient Temperature : 23.2 °C; Liquid Temperature : 22.3 °C

DASY5 Configuration:

- Probe: EX3DV4 - SN7608; ConvF(8.4, 8.4, 8.4) @ 1880 MHz; Calibrated: 2023.03.15
- Sensor-Surface: 2mm (Mechanical Surface Detection)
- Electronics: DAE4 Sn1643; Calibrated: 2023.02.22
- Phantom: Twin-SAM; Type: QD 000 P41 Ax; Serial: 2020
- Measurement SW: DASY52, Version 52.10 (4); SEMCAD X Version 14.6.14 (7483)

Ch18900/Area Scan (71x81x1): Interpolated grid: dx=1.500 mm, dy=1.500 mm

Maximum value of SAR (interpolated) = 1.02 W/kg

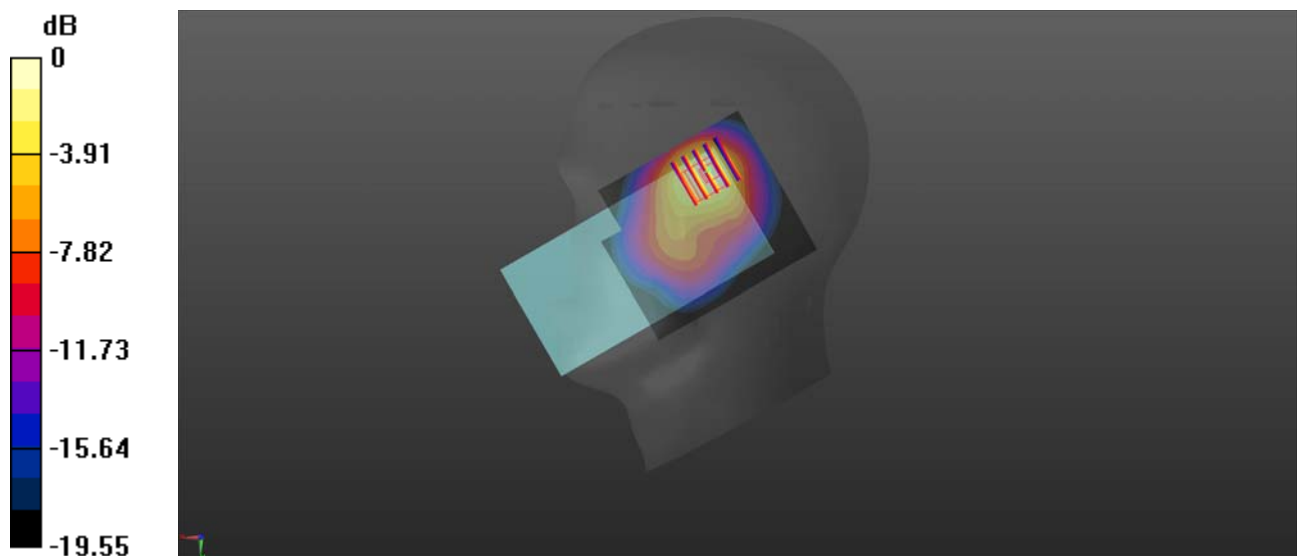
Ch18900/Zoom Scan (5x5x7)/Cube 0: Measurement grid: dx=8mm, dy=8mm, dz=5mm

Reference Value = 12.36 V/m; Power Drift = 0.14 dB

Peak SAR (extrapolated) = 1.14 W/kg

SAR(1 g) = 0.674 W/kg; SAR(10 g) = 0.402 W/kg

Maximum value of SAR (measured) = 0.867 W/kg



0 dB = 1.02 W/kg

Test Laboratory: Shenzhen Morlab Communications Technology Co., Ltd.

Date: 2023.04.26

LTE Band 5_10MHz_QPSK_1RB_0Offset_Right Cheek_Ch20525

Communication System: UID 0, LTE (0); Frequency: 836.5 MHz; Duty Cycle: 1:1

Medium: HSL_900 Medium parameters used: $f = 836.5$ MHz; $\sigma = 0.958$ S/m; $\epsilon_r = 40.846$; $\rho = 1000$ kg/m³

Ambient Temperature : 23.2 °C; Liquid Temperature : 22.2 °C

DASY5 Configuration:

- Probe: EX3DV4 - SN7608; ConvF(10, 10, 10) @ 900 MHz; Calibrated: 2023.03.15
- Sensor-Surface: 2mm (Mechanical Surface Detection)
- Electronics: DAE4 Sn1643; Calibrated: 2023.02.22
- Phantom: Twin-SAM; Type: QD 000 P41 Ax; Serial: 2020
- Measurement SW: DASY52, Version 52.10 (4); SEMCAD X Version 14.6.14 (7483)

Ch20525/Area Scan (71x91x1): Interpolated grid: dx=1.500 mm, dy=1.500 mm

Maximum value of SAR (interpolated) = 0.313 W/kg

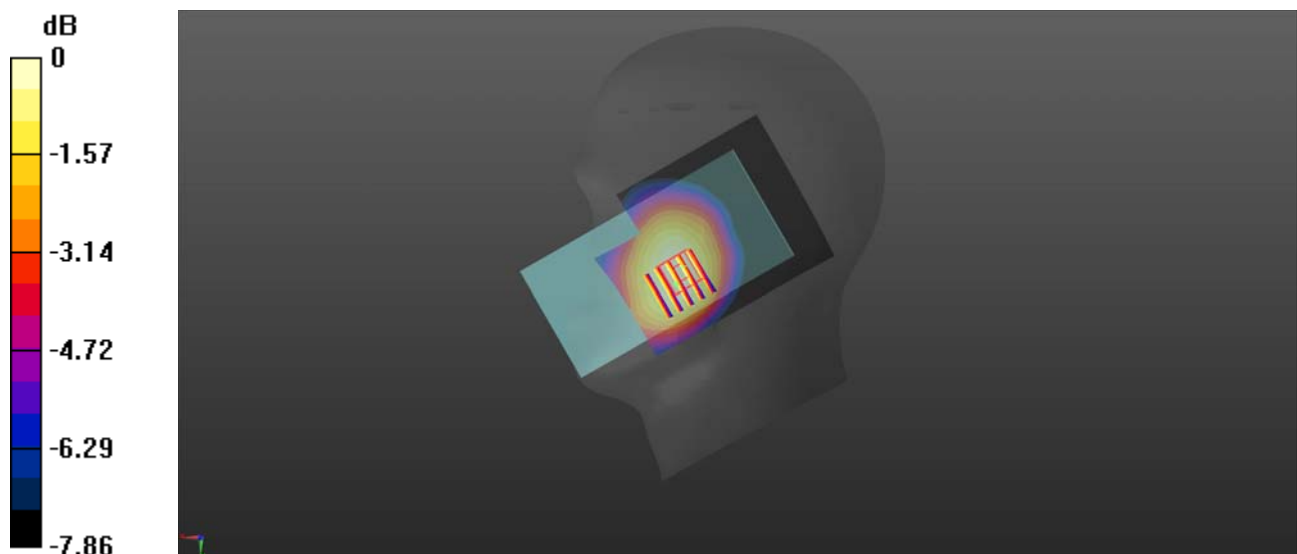
Ch20525/Zoom Scan (5x5x7)/Cube 0: Measurement grid: dx=8mm, dy=8mm, dz=5mm

Reference Value = 2.824 V/m; Power Drift = 0.05 dB

Peak SAR (extrapolated) = 0.355 W/kg

SAR(1 g) = 0.293 W/kg; SAR(10 g) = 0.232 W/kg

Maximum value of SAR (measured) = 0.323 W/kg



0 dB = 0.313 W/kg

Test Laboratory: Shenzhen Morlab Communications Technology Co., Ltd.

Date: 2023.04.28

LTE Band 12_10MHz_QPSK_1RB_0Offset_Right Cheek_Ch23095

Communication System: UID 0, LTE (0); Frequency: 707.5 MHz; Duty Cycle: 1:1

Medium: HSL_750 Medium parameters used: $f = 707.5$ MHz; $\sigma = 0.919$ S/m; $\epsilon_r = 42.233$; $\rho = 1000$ kg/m³

Ambient Temperature : 23.2 °C; Liquid Temperature : 22.2 °C

DASY5 Configuration:

- Probe: EX3DV4 - SN7608; ConvF(10.45, 10.45, 10.45) @ 900 MHz; Calibrated: 2023.03.15

- Sensor-Surface: 2mm (Mechanical Surface Detection)

- Electronics: DAE4 Sn1643; Calibrated: 2023.02.22

- Phantom: Twin-SAM; Type: QD 000 P41 Ax; Serial: 2020

- Measurement SW: DASY52, Version 52.10 (4); SEMCAD X Version 14.6.14 (7483)

Ch20525/Area Scan (71x91x1): Interpolated grid: dx=1.500 mm, dy=1.500 mm

Maximum value of SAR (interpolated) = 0.208 W/kg

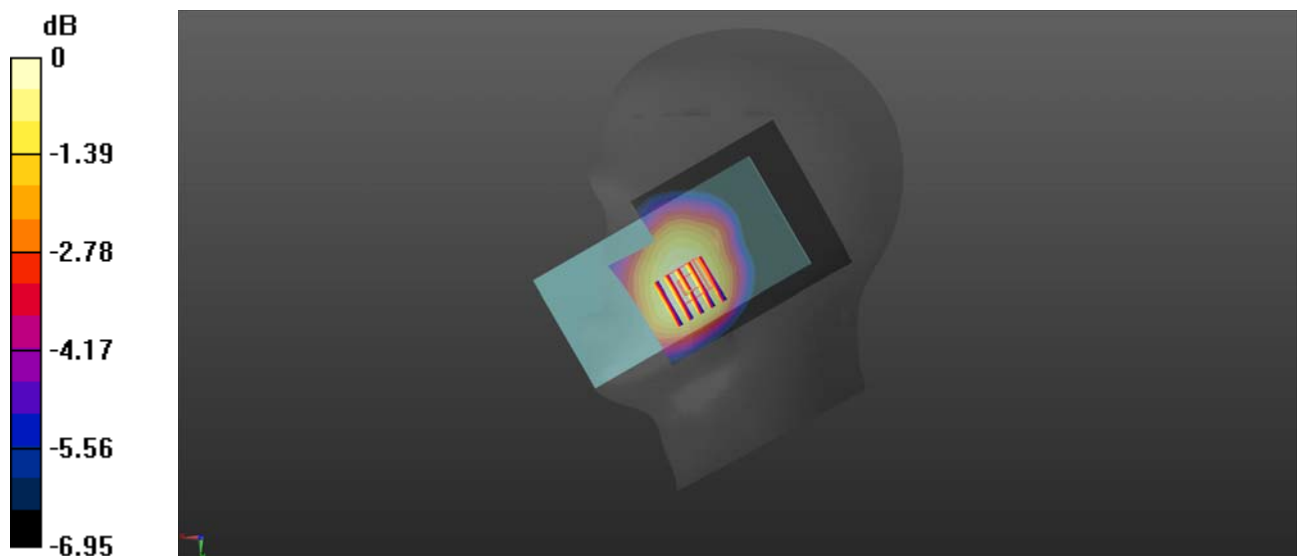
Ch20525/Zoom Scan (5x5x7)/Cube 0: Measurement grid: dx=8mm, dy=8mm, dz=5mm

Reference Value = 2.407 V/m; Power Drift = 0.05 dB

Peak SAR (extrapolated) = 0.219 W/kg

SAR(1 g) = 0.184 W/kg; SAR(10 g) = 0.151 W/kg

Maximum value of SAR (measured) = 0.203 W/kg



0 dB = 0.208 W/kg

Test Laboratory: Shenzhen Morlab Communications Technology Co., Ltd.

Date: 2023.04.27

LTE Band 66_20MHz_QPSK_1RB_0Offset_Right Cheek_Ch132322

Communication System: UID 0, LTE (0); Frequency: 1745 MHz; Duty Cycle: 1:1

Medium: HSL_1800 Medium parameters used: $f = 1745$ MHz; $\sigma = 1.382$ S/m; $\epsilon_r = 41.164$; $\rho = 1000$ kg/m³

Ambient Temperature : 23.2 °C; Liquid Temperature : 22.3 °C

DASY5 Configuration:

- Probe: EX3DV4 - SN7608; ConvF(8.4, 8.4, 8.4) @ 1745 MHz; Calibrated: 2023.03.15
- Sensor-Surface: 2mm (Mechanical Surface Detection)
- Electronics: DAE4 Sn1643; Calibrated: 2023.02.22
- Phantom: Twin-SAM; Type: QD 000 P41 Ax; Serial: 2020
- Measurement SW: DASY52, Version 52.10 (4); SEMCAD X Version 14.6.14 (7483)

Ch132322/Area Scan (71x81x1): Interpolated grid: dx=1.500 mm, dy=1.500 mm

Maximum value of SAR (interpolated) = 0.464 W/kg

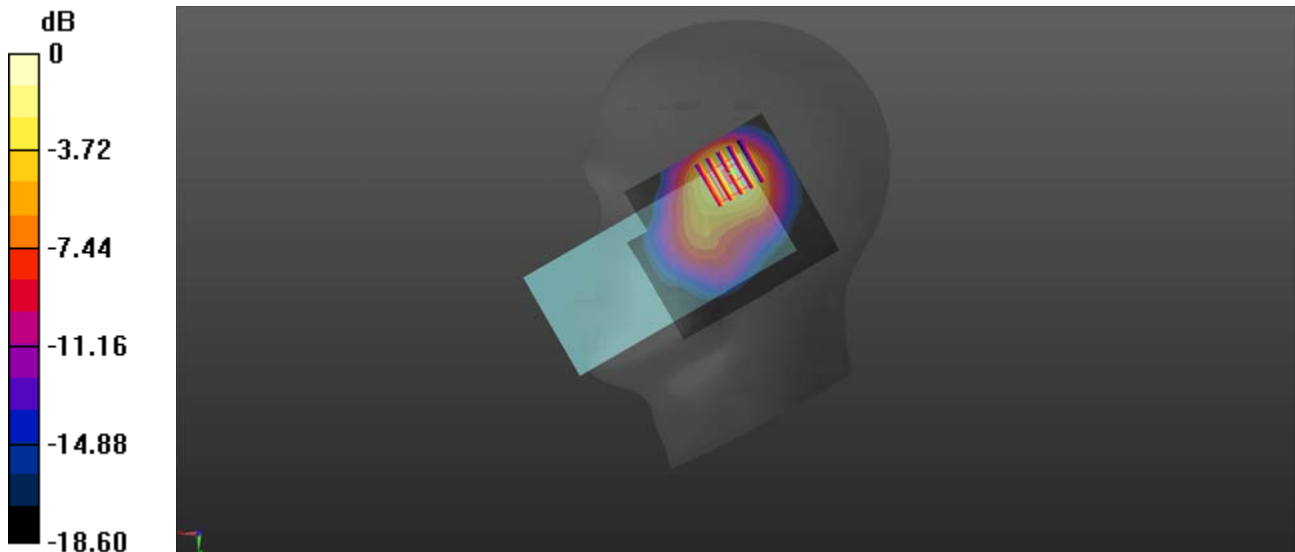
Ch132322/Zoom Scan (5x5x7)/Cube 0: Measurement grid: dx=8mm, dy=8mm, dz=5mm

Reference Value = 8.159 V/m; Power Drift = -0.03 dB

Peak SAR (extrapolated) = 0.503 W/kg

SAR(1 g) = 0.298 W/kg; SAR(10 g) = 0.181 W/kg

Maximum value of SAR (measured) = 0.378 W/kg



0 dB = 0.464 W/kg

Test Laboratory: Shenzhen Morlab Communications Technology Co., Ltd.

Date: 2023.04.28

LTE Band 71_20MHz_QPSK_1RB_0Offset_Right Cheek_Ch133322

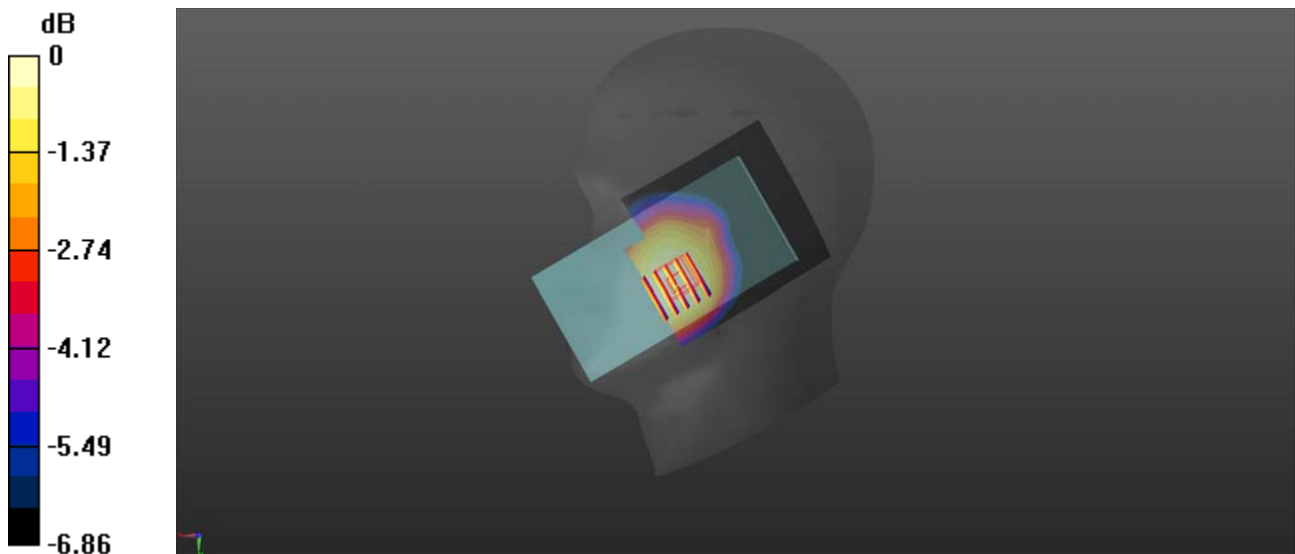
Communication System: UID 0, LTE (0); Frequency: 683 MHz; Duty Cycle: 1:1
Medium: HSL_750 Medium parameters used: $f = 683$ MHz; $\sigma = 0.91$ S/m; $\epsilon_r = 42.287$; $\rho = 1000$ kg/m³
Ambient Temperature : 23.2 °C; Liquid Temperature : 22.2 °C

DASY5 Configuration:

- Probe: EX3DV4 - SN7608; ConvF(10.45, 10.45, 10.45) @ 750 MHz; Calibrated: 2023.03.15
- Sensor-Surface: 2mm (Mechanical Surface Detection)
- Electronics: DAE4 Sn1643; Calibrated: 2023.02.22
- Phantom: Twin-SAM; Type: QD 000 P41 Ax; Serial: 2020
- Measurement SW: DASY52, Version 52.10 (4); SEMCAD X Version 14.6.14 (7483)

Ch133322/Area Scan (71x81x1): Interpolated grid: dx=1.500 mm, dy=1.500 mm
Maximum value of SAR (interpolated) = 0.143 W/kg

Ch133322/Zoom Scan (5x5x7)/Cube 0: Measurement grid: dx=8mm, dy=8mm, dz=5mm
Reference Value = 1.305 V/m; Power Drift = 0.04 dB
Peak SAR (extrapolated) = 0.154 W/kg
SAR(1 g) = 0.129 W/kg; SAR(10 g) = 0.107 W/kg
Maximum value of SAR (measured) = 0.142 W/kg



0 dB = 0.143 W/kg

Test Laboratory: Shenzhen Morlab Communications Technology Co., Ltd.

Date: 2023.04.25

WLAN 2.4GHz_802.11b 1Mbps_Right Cheek_Ch7

Communication System: UID 0, WLAN 2.4GHz 802.11b (0); Frequency: 2442 MHz; Duty Cycle: 1:1.003
Medium: HSL_2450 Medium parameters used: $f = 2442$ MHz; $\sigma = 1.808$ S/m; $\epsilon_r = 38.829$; $\rho = 1000$ kg/m³

Ambient Temperature : 23.2 °C; Liquid Temperature : 22.5 °C

DASY5 Configuration:

- Probe: EX3DV4 - SN7608; ConvF(7.6, 7.6, 7.6) @ 2450 MHz; Calibrated: 2023.03.15
- Sensor-Surface: 2mm (Mechanical Surface Detection)
- Electronics: DAE4 Sn1643; Calibrated: 2023.02.22
- Phantom: Twin-SAM; Type: QD 000 P41 Ax; Serial: 2020
- Measurement SW: DASY52, Version 52.10 (4); SEMCAD X Version 14.6.14 (7483)

Ch7/Area Scan (91x101x1): Interpolated grid: dx=1.200 mm, dy=1.200 mm

Maximum value of SAR (interpolated) = 0.112 W/kg

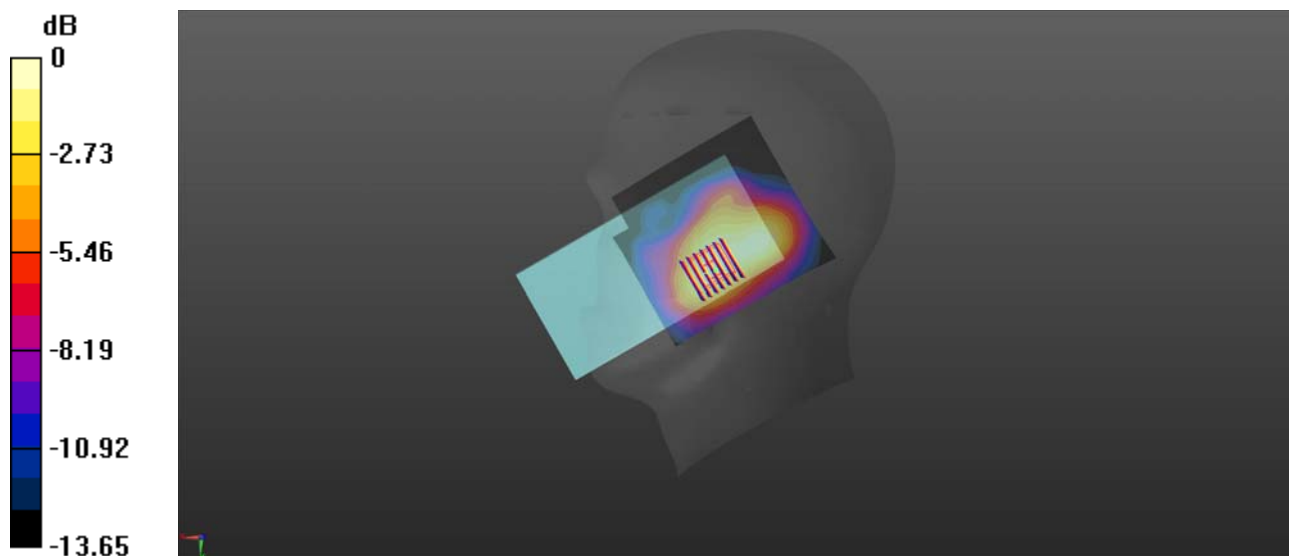
Ch7/Zoom Scan (7x7x7)/Cube 0: Measurement grid: dx=5mm, dy=5mm, dz=5mm

Reference Value = 4.180 V/m; Power Drift = -0.07 dB

Peak SAR (extrapolated) = 0.135 W/kg

SAR(1 g) = 0.084 W/kg; SAR(10 g) = 0.051 W/kg

Maximum value of SAR (measured) = 0.110 W/kg



0 dB = 0.112 W/kg

Test Laboratory: Shenzhen Morlab Communications Technology Co., Ltd.

Date: 2023.04.26

GSM850_GPRS(2 TX slots)_Back Side_10mm_Ch189

Communication System: UID 0, GSM850(class 10) (0); Frequency: 836.4 MHz; Duty Cycle: 1:4.15
Medium: HSL_900 Medium parameters used: $f = 836.4$ MHz; $\sigma = 0.958$ S/m; $\epsilon_r = 40.843$; $\rho = 1000$ kg/m³

Ambient Temperature : 23.2 °C; Liquid Temperature : 22.2 °C

DASY5 Configuration:

- Probe: EX3DV4 - SN7608; ConvF(10, 10, 10) @ 900 MHz; Calibrated: 2023.03.15
- Sensor-Surface: 2mm (Mechanical Surface Detection)
- Electronics: DAE4 Sn1643; Calibrated: 2023.02.22
- Phantom: Twin-SAM; Type: QD 000 P41 Ax; Serial: 2020
- Measurement SW: DASY52, Version 52.10 (4); SEMCAD X Version 14.6.14 (7483)

Ch189/Area Scan (71x121x1): Interpolated grid: dx=1.500 mm, dy=1.500 mm

Maximum value of SAR (interpolated) = 0.591 W/kg

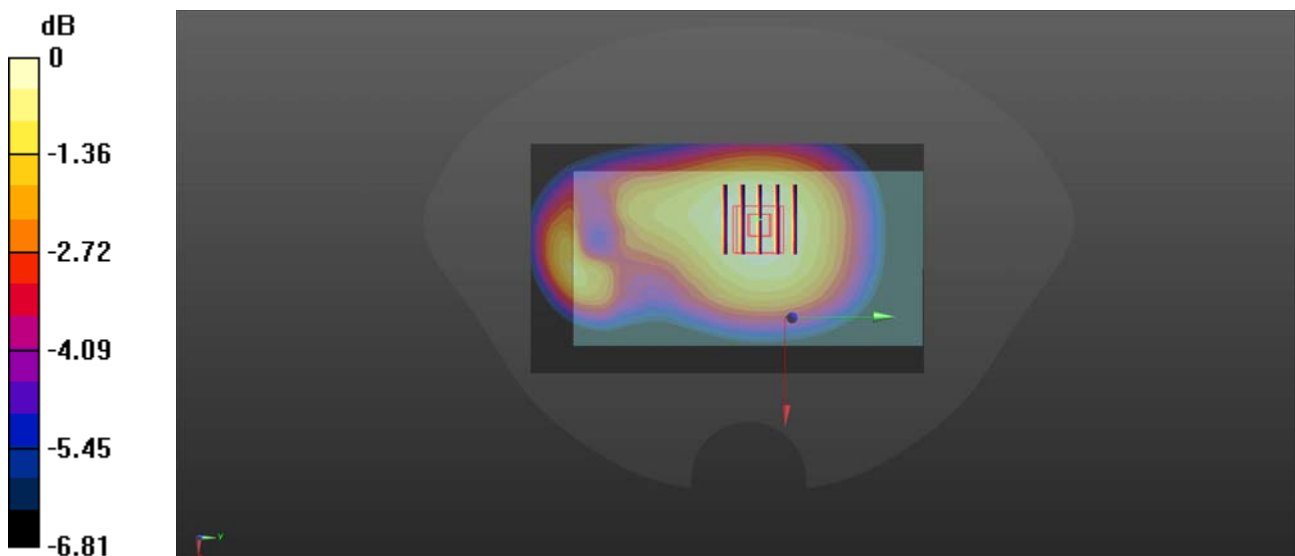
Ch189/Zoom Scan (5x5x7)/Cube 0: Measurement grid: dx=8mm, dy=8mm, dz=5mm

Reference Value = 22.62 V/m; Power Drift = 0.01 dB

Peak SAR (extrapolated) = 0.643 W/kg

SAR(1 g) = 0.512 W/kg; SAR(10 g) = 0.396 W/kg

Maximum value of SAR (measured) = 0.583 W/kg



Test Laboratory: Shenzhen Morlab Communications Technology Co., Ltd.

Date: 2023.04.27

GSM1900_GPRS(3 TX slots)_Back Side_10mm_Ch661

Communication System: UID 0, GSM1900(class 11) (0); Frequency: 1880 MHz; Duty Cycle: 1:2.77

Medium: HSL_1800 Medium parameters used: $f = 1880$ MHz; $\sigma = 1.351$ S/m; $\epsilon_r = 39.882$; $\rho = 1000$ kg/m³

Ambient Temperature : 23.2 °C; Liquid Temperature : 22.3 °C

DASY5 Configuration:

- Probe: EX3DV4 - SN7608; ConvF(8.4, 8.4, 8.4) @ 1880 MHz; Calibrated: 2023.03.15
- Sensor-Surface: 2mm (Mechanical Surface Detection)
- Electronics: DAE4 Sn1643; Calibrated: 2023.02.22
- Phantom: Twin-SAM; Type: QD 000 P41 Ax; Serial: 2020
- Measurement SW: DASY52, Version 52.10 (4); SEMCAD X Version 14.6.14 (7483)

Ch661/Area Scan (71x81x1): Interpolated grid: dx=1.500 mm, dy=1.500 mm

Maximum value of SAR (interpolated) = 0.495 W/kg

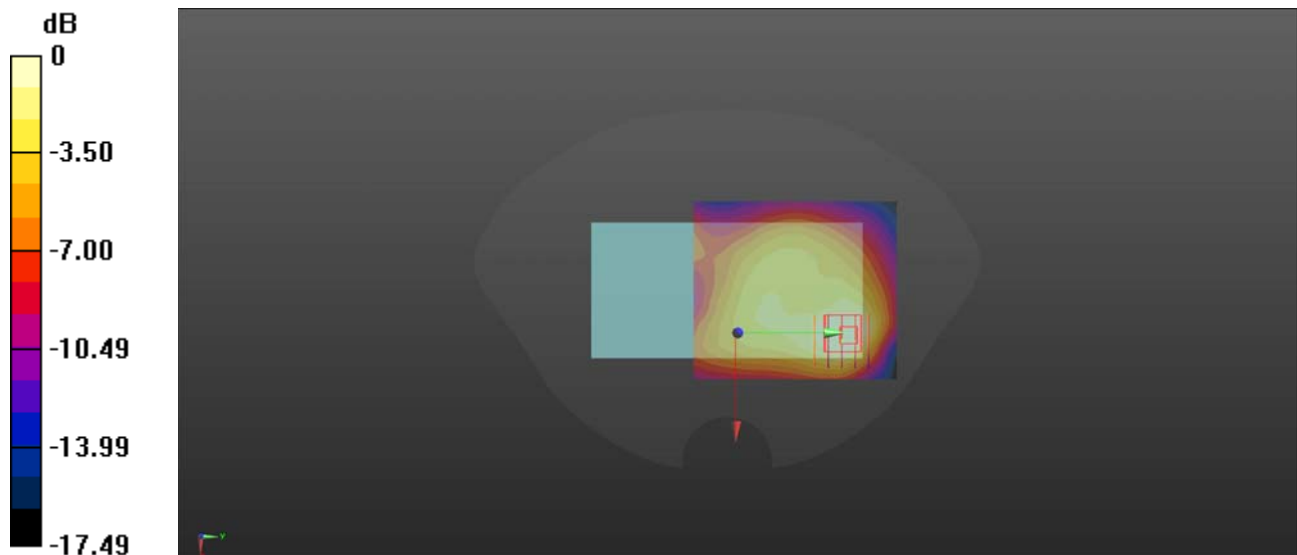
Ch661/Zoom Scan (5x5x7)/Cube 0: Measurement grid: dx=8mm, dy=8mm, dz=5mm

Reference Value = 9.597 V/m; Power Drift = 0.07 dB

Peak SAR (extrapolated) = 0.600 W/kg

SAR(1 g) = 0.351 W/kg; SAR(10 g) = 0.208 W/kg

Maximum value of SAR (measured) = 0.455 W/kg



0 dB = 0.455 W/kg

Test Laboratory: Shenzhen Morlab Communications Technology Co., Ltd.

Date: 2023.04.27

WCDMA Band II_RMC 12.2Kbps_Back Side_10mm_Ch9400

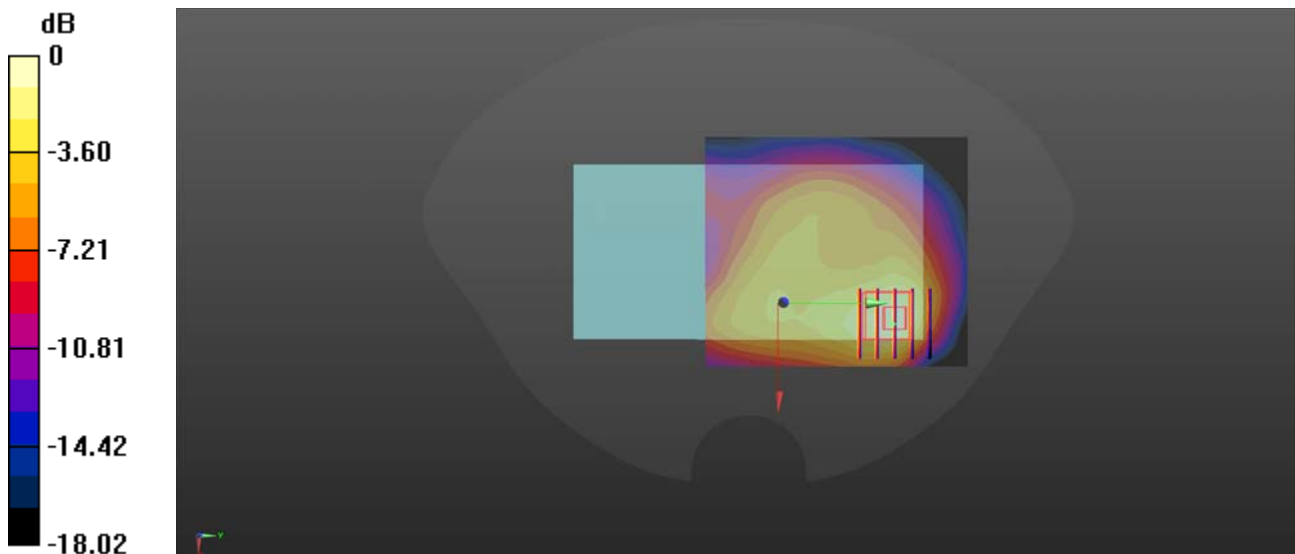
Communication System: UID 0, UMTS-FDD (0); Frequency: 1880 MHz; Duty Cycle: 1:1
Medium: HSL_1800 Medium parameters used: $f = 1880$ MHz; $\sigma = 1.351$ S/m; $\epsilon_r = 39.882$; $\rho = 1000$ kg/m³
Ambient Temperature : 23.2 °C; Liquid Temperature : 22.3 °C

DASY5 Configuration:

- Probe: EX3DV4 - SN7608; ConvF(8.4, 8.4, 8.4) @ 1880 MHz; Calibrated: 2023.03.15
- Sensor-Surface: 2mm (Mechanical Surface Detection)
- Electronics: DAE4 Sn1643; Calibrated: 2023.02.22
- Phantom: Twin-SAM; Type: QD 000 P41 Ax; Serial: 2020
- Measurement SW: DASY52, Version 52.10 (4); SEMCAD X Version 14.6.14 (7483)

Ch9400/Area Scan (71x81x1): Interpolated grid: dx=1.500 mm, dy=1.500 mm
Maximum value of SAR (interpolated) = 0.142 W/kg

Ch9400/Zoom Scan (5x5x7)/Cube 0: Measurement grid: dx=8mm, dy=8mm, dz=5mm
Reference Value = 4.576 V/m; Power Drift = 0.02 dB
Peak SAR (extrapolated) = 0.146 W/kg
SAR(1 g) = 0.085 W/kg; SAR(10 g) = 0.050 W/kg
Maximum value of SAR (measured) = 0.112 W/kg



0 dB = 0.142 W/kg

Test Laboratory: Shenzhen Morlab Communications Technology Co., Ltd.

Date: 2023.04.27

WCDMA Band IV_RMC 12.2Kbps_Back Side_10mm_Ch1413

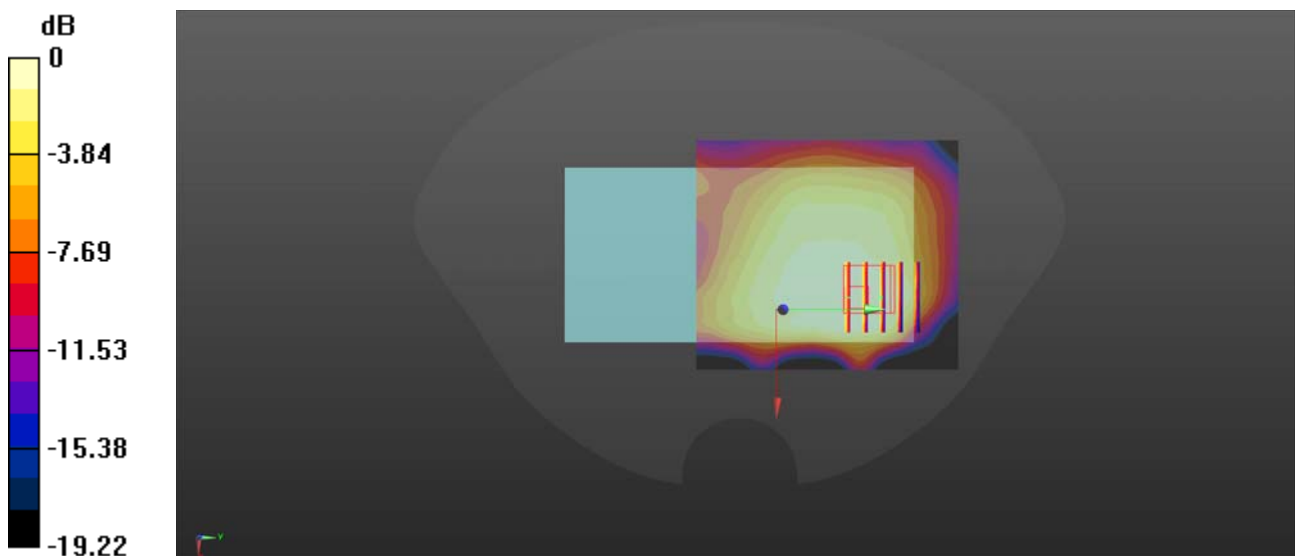
Communication System: UID 0, UMTS-FDD (0); Frequency: 1732.6 MHz; Duty Cycle: 1:1
Medium: HSL_1800 Medium parameters used: $f = 1733$ MHz; $\sigma = 1.366$ S/m; $\epsilon_r = 41.367$; $\rho = 1000$ kg/m³
Ambient Temperature : 23.2 °C; Liquid Temperature : 22.3 °C

DASY5 Configuration:

- Probe: EX3DV4 - SN7608; ConvF(8.4, 8.4, 8.4) @ 1732.6 MHz; Calibrated: 2023.03.15
- Sensor-Surface: 2mm (Mechanical Surface Detection)
- Electronics: DAE4 Sn1643; Calibrated: 2023.02.22
- Phantom: Twin-SAM; Type: QD 000 P41 Ax; Serial: 2020
- Measurement SW: DASY52, Version 52.10 (4); SEMCAD X Version 14.6.14 (7483)

Ch1413/Area Scan (71x81x1): Interpolated grid: dx=1.500 mm, dy=1.500 mm
Maximum value of SAR (interpolated) = 0.0589 W/kg

Ch1413/Zoom Scan (5x5x7)/Cube 0: Measurement grid: dx=8mm, dy=8mm, dz=5mm
Reference Value = 2.281 V/m; Power Drift = 0.02 dB
Peak SAR (extrapolated) = 0.0640 W/kg
SAR(1 g) = 0.041 W/kg; SAR(10 g) = 0.025 W/kg
Maximum value of SAR (measured) = 0.0534 W/kg



0 dB = 0.0589 W/kg

Test Laboratory: Shenzhen Morlab Communications Technology Co., Ltd.

Date: 2023.04.26

WCDMA Band V_RMC 12.2Kbps_Back Side_10mm_Ch4182

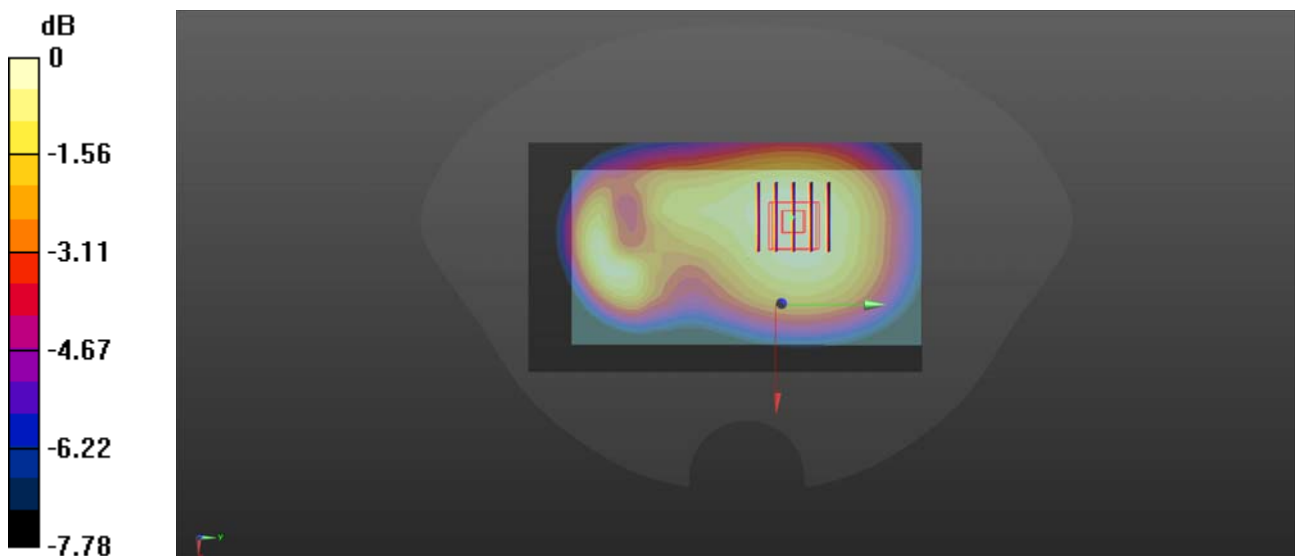
Communication System: UID 0, UMTS-FDD (0); Frequency: 836.4 MHz; Duty Cycle: 1:1
Medium: HSL_900 Medium parameters used: $f = 836.4$ MHz; $\sigma = 0.958$ S/m; $\epsilon_r = 40.843$; $\rho = 1000$ kg/m³
Ambient Temperature : 23.2 °C; Liquid Temperature : 22.2 °C

DASY5 Configuration:

- PProbe: EX3DV4 - SN7608; ConvF(10, 10, 10) @ 900 MHz; Calibrated: 2023.03.15
- Sensor-Surface: 2mm (Mechanical Surface Detection)
- EElectronics: DAE4 Sn1643; Calibrated: 2023.02.22
- Phantom: Twin-SAM; Type: QD 000 P41 Ax; Serial: 2020
- Measurement SW: DASY52, Version 52.10 (4); SEMCAD X Version 14.6.14 (7483)

Ch4182/Area Scan (71x121x1): Interpolated grid: dx=1.500 mm, dy=1.500 mm
Maximum value of SAR (interpolated) = 0.350 W/kg

Ch4182/Zoom Scan (5x5x7)/Cube 0: Measurement grid: dx=8mm, dy=8mm, dz=5mm
Reference Value = 16.36 V/m; Power Drift = -0.05 dB
Peak SAR (extrapolated) = 0.366 W/kg
SAR(1 g) = 0.289 W/kg; SAR(10 g) = 0.223 W/kg
Maximum value of SAR (measured) = 0.331 W/kg



0 dB = 0.350 W/kg

Test Laboratory: Shenzhen Morlab Communications Technology Co., Ltd.

Date: 2023.04.27

LTE Band 2_20MHz_QPSK_1RB_0Offset_Back Side_10mm_Ch18900

Communication System: UID 0, LTE (0); Frequency: 1880 MHz; Duty Cycle: 1:1

Medium: HSL_1800 Medium parameters used: $f = 1880$ MHz; $\sigma = 1.351$ S/m; $\epsilon_r = 39.882$; $\rho = 1000$ kg/m³

Ambient Temperature : 23.2 °C; Liquid Temperature : 22.3 °C

DASY5 Configuration:

- Probe: EX3DV4 - SN7608; ConvF(8.4, 8.4, 8.4) @ 1880 MHz; Calibrated: 2023.03.15
- Sensor-Surface: 2mm (Mechanical Surface Detection)
- Electronics: DAE4 Sn1643; Calibrated: 2023.02.22
- Phantom: Twin-SAM; Type: QD 000 P41 Ax; Serial: 2020
- Measurement SW: DASY52, Version 52.10 (4); SEMCAD X Version 14.6.14 (7483)

Ch18900/Area Scan (71x81x1): Interpolated grid: dx=1.500 mm, dy=1.500 mm

Maximum value of SAR (interpolated) = 0.272 W/kg

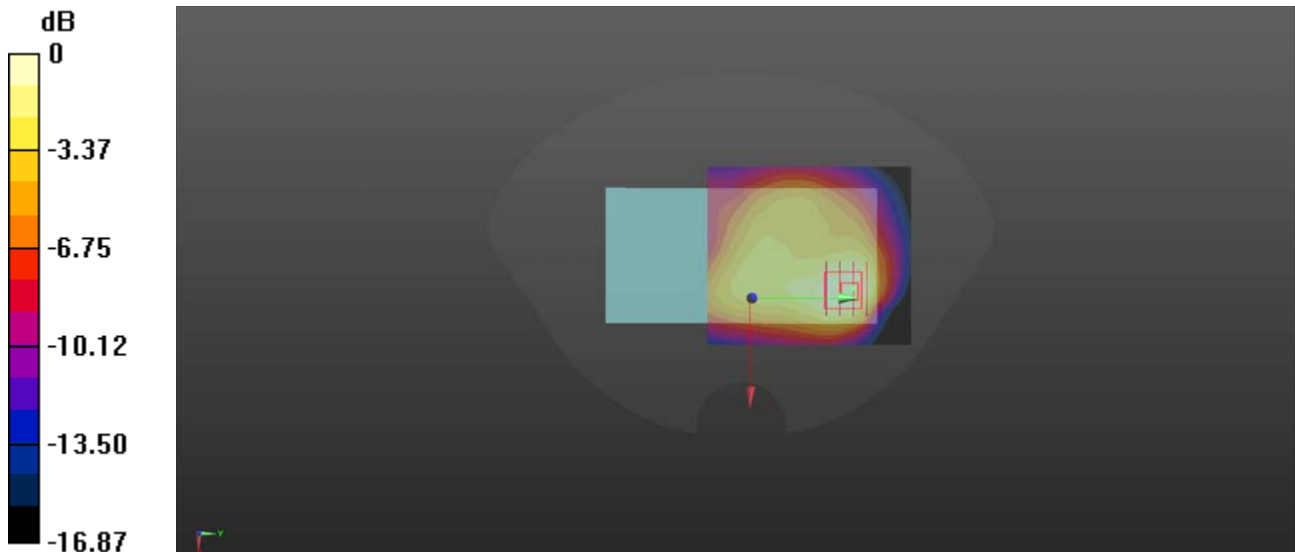
Ch18900/Zoom Scan (5x5x7)/Cube 0: Measurement grid: dx=8mm, dy=8mm, dz=5mm

Reference Value = 7.894 V/m; Power Drift = 0.03 dB

Peak SAR (extrapolated) = 0.292 W/kg

SAR(1 g) = 0.171 W/kg; SAR(10 g) = 0.100 W/kg

Maximum value of SAR (measured) = 0.230 W/kg



0 dB = 0.230 W/kg

Test Laboratory: Shenzhen Morlab Communications Technology Co., Ltd.

Date: 2023.04.26

LTE Band 5_10MHz_QPSK_1RB_0Offset_Back Side_10mm_Ch20525

Communication System: UID 0, LTE (0); Frequency: 836.5 MHz; Duty Cycle: 1:1

Medium: HSL_900 Medium parameters used: $f = 836.5$ MHz; $\sigma = 0.958$ S/m; $\epsilon_r = 40.846$; $\rho = 1000$ kg/m³

Ambient Temperature : 23.2 °C; Liquid Temperature : 22.2 °C

DASY5 Configuration:

- Probe: EX3DV4 - SN7608; ConvF(10, 10, 10) @ 900 MHz; Calibrated: 2023.03.15
- Sensor-Surface: 2mm (Mechanical Surface Detection)
- Electronics: DAE4 Sn1643; Calibrated: 2023.02.22
- Phantom: Twin-SAM; Type: QD 000 P41 Ax; Serial: 2020
- Measurement SW: DASY52, Version 52.10 (4); SEMCAD X Version 14.6.14 (7483)

Ch20525/Area Scan (71x121x1): Interpolated grid: dx=1.500 mm, dy=1.500 mm

Maximum value of SAR (interpolated) = 0.511 W/kg

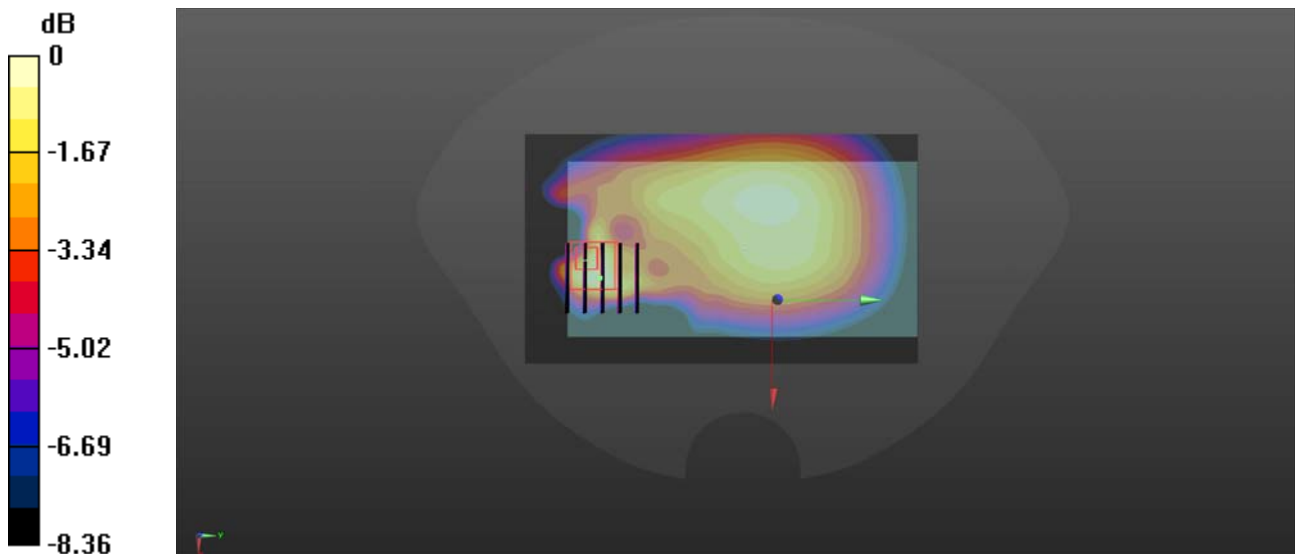
Ch20525/Zoom Scan (5x5x7)/Cube 0: Measurement grid: dx=8mm, dy=8mm, dz=5mm

Reference Value = 19.08 V/m; Power Drift = 0.06 dB

Peak SAR (extrapolated) = 0.511 W/kg

SAR(1 g) = 0.290 W/kg; SAR(10 g) = 0.165 W/kg

Maximum value of SAR (measured) = 0.394 W/kg



Test Laboratory: Shenzhen Morlab Communications Technology Co., Ltd.

Date: 2023.04.28

LTE Band 12_10MHz_QPSK_1RB_0Offset_Back Side_10mm_Ch23095

Communication System: UID 0, LTE (0); Frequency: 707.5 MHz; Duty Cycle: 1:1

Medium: HSL_750 Medium parameters used: $f = 707.5$ MHz; $\sigma = 0.919$ S/m; $\epsilon_r = 42.233$; $\rho = 1000$ kg/m³

Ambient Temperature : 23.2 °C; Liquid Temperature : 22.2 °C

DASY5 Configuration:

- Probe: EX3DV4 - SN7608; ConvF(10.45, 10.45, 10.45) @ 750 MHz; Calibrated: 2023.03.15

- Sensor-Surface: 2mm (Mechanical Surface Detection)

- Electronics: DAE4 Sn1643; Calibrated: 2023.02.22

- Phantom: Twin-SAM; Type: QD 000 P41 Ax; Serial: 2020

- Measurement SW: DASY52, Version 52.10 (4); SEMCAD X Version 14.6.14 (7483)

Ch23095/Area Scan (71x121x1): Interpolated grid: dx=1.500 mm, dy=1.500 mm

Maximum value of SAR (interpolated) = 0.0492 W/kg

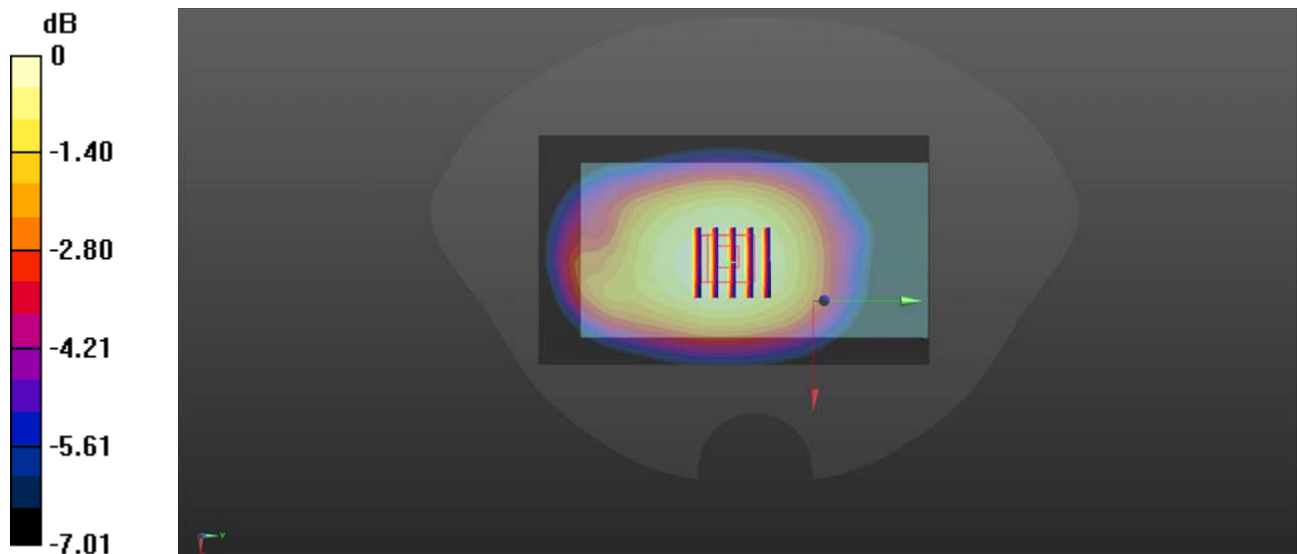
Ch23095/Zoom Scan (5x5x7)/Cube 0: Measurement grid: dx=8mm, dy=8mm, dz=5mm

Reference Value = 6.578 V/m; Power Drift = -0.01 dB

Peak SAR (extrapolated) = 0.0500 W/kg

SAR(1 g) = 0.040 W/kg; SAR(10 g) = 0.032 W/kg

Maximum value of SAR (measured) = 0.0456 W/kg



0 dB = 0.0492 W/kg

Test Laboratory: Shenzhen Morlab Communications Technology Co., Ltd.

Date: 2023.04.27

LTE Band 66_20MHz_QPSK_1RB_0Offset_Back Side_10mm_Ch132322

Communication System: UID 0, LTE (0); Frequency: 1745 MHz; Duty Cycle: 1:1

Medium: HSL_1800 Medium parameters used: $f = 1745$ MHz; $\sigma = 1.382$ S/m; $\epsilon_r = 41.164$; $\rho = 1000$ kg/m³

Ambient Temperature : 23.2 °C; Liquid Temperature : 22.3 °C

DASY5 Configuration:

- Probe: EX3DV4 - SN7608; ConvF(8.4, 8.4, 8.4) @ 1745 MHz; Calibrated: 2023.03.15
- Sensor-Surface: 2mm (Mechanical Surface Detection)
- Electronics: DAE4 Sn1643; Calibrated: 2023.02.22
- Phantom: Twin-SAM; Type: QD 000 P41 Ax; Serial: 2020
- Measurement SW: DASY52, Version 52.10 (4); SEMCAD X Version 14.6.14 (7483)

Ch132322/Area Scan (71x81x1): Interpolated grid: dx=1.500 mm, dy=1.500 mm

Maximum value of SAR (interpolated) = 0.0738 W/kg

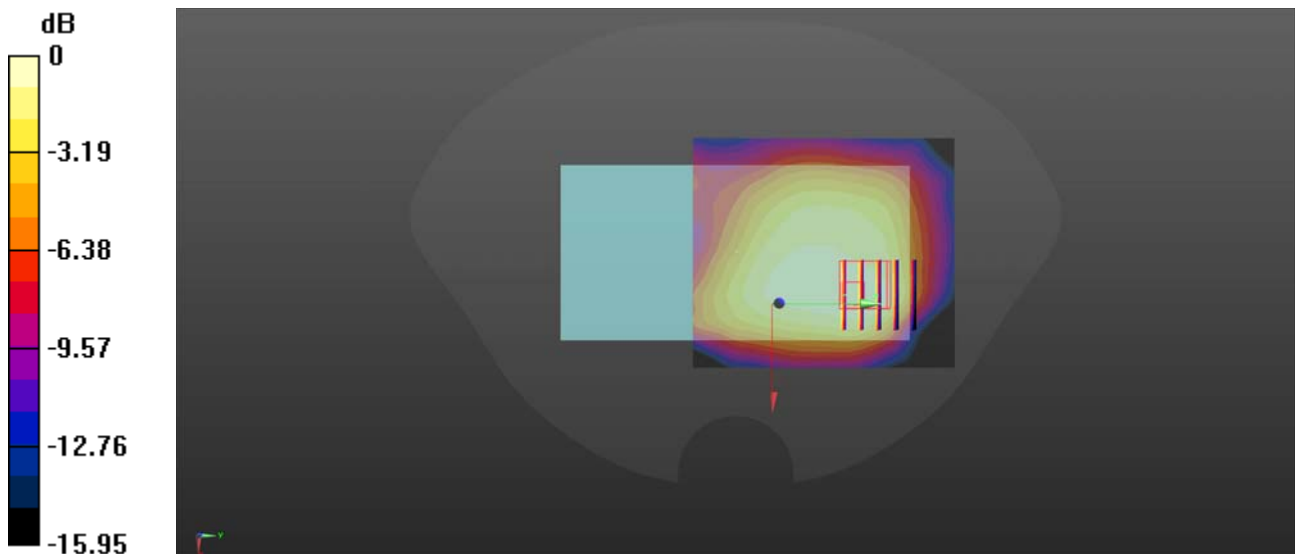
Ch132322/Zoom Scan (5x5x7)/Cube 0: Measurement grid: dx=8mm, dy=8mm, dz=5mm

Reference Value = 3.769 V/m; Power Drift = 0.05 dB

Peak SAR (extrapolated) = 0.0810 W/kg

SAR(1 g) = 0.052 W/kg; SAR(10 g) = 0.032 W/kg

Maximum value of SAR (measured) = 0.0686 W/kg



0 dB = 0.0738 W/kg

Test Laboratory: Shenzhen Morlab Communications Technology Co., Ltd.

Date: 2023.04.28

LTE Band 71_20MHz_QPSK_1RB_0Offset_Back Side_10mm_Ch133322

Communication System: UID 0, LTE (0); Frequency: 683 MHz; Duty Cycle: 1:1

Medium: HSL_750 Medium parameters used: $f = 683$ MHz; $\sigma = 0.91$ S/m; $\epsilon_r = 42.287$; $\rho = 1000$ kg/m³

Ambient Temperature : 23.2 °C; Liquid Temperature : 22.2 °C

DASY5 Configuration:

- Probe: EX3DV4 - SN7608; ConvF(10.45, 10.45, 10.45) @ 683 MHz; Calibrated: 2023.03.15
- Sensor-Surface: 2mm (Mechanical Surface Detection)
- Electronics: DAE4 Sn1643; Calibrated: 2023.02.22
- Phantom: Twin-SAM; Type: QD 000 P41 Ax; Serial: 2020
- Measurement SW: DASY52, Version 52.10 (4); SEMCAD X Version 14.6.14 (7483)

Ch133322/Area Scan (71x121x1): Interpolated grid: dx=1.500 mm, dy=1.500 mm

Maximum value of SAR (interpolated) = 0.321 W/kg

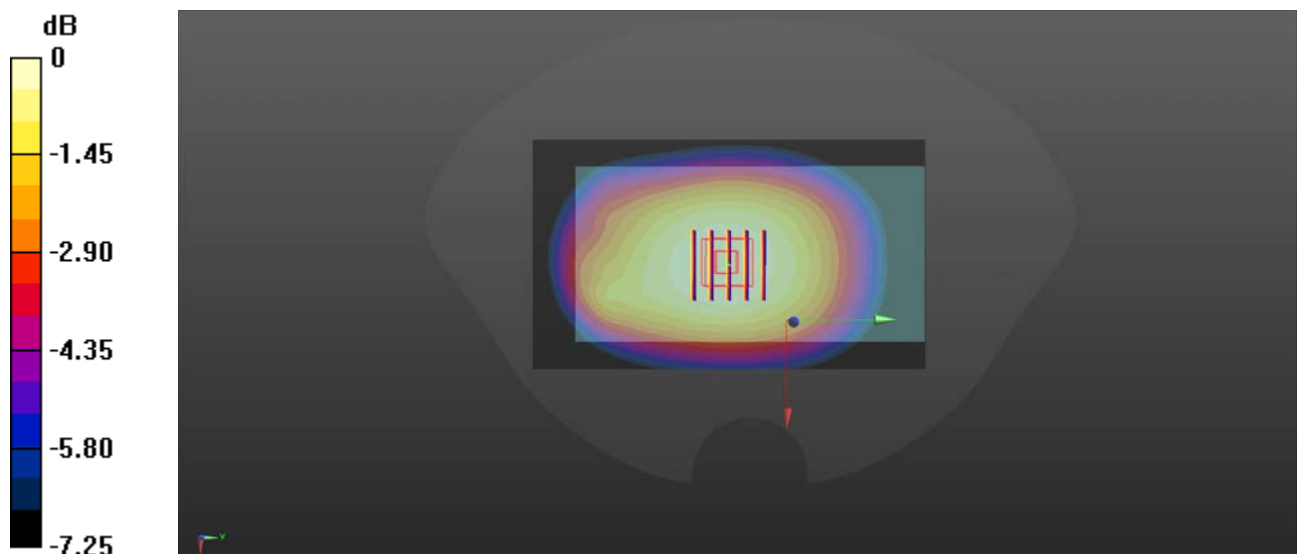
Ch133322/Zoom Scan (5x5x7)/Cube 0: Measurement grid: dx=8mm, dy=8mm, dz=5mm

Reference Value = 18.07 V/m; Power Drift = -0.01 dB

Peak SAR (extrapolated) = 0.345 W/kg

SAR(1 g) = 0.273 W/kg; SAR(10 g) = 0.214 W/kg

Maximum value of SAR (measured) = 0.313 W/kg



0 dB = 0.321 W/kg

Test Laboratory: Shenzhen Morlab Communications Technology Co., Ltd.

Date: 2023.04.25

WLAN 2.4GHz_802.11b 1Mbps_Back Side 10mm_Ch7

Communication System: UID 0, WLAN 2.4GHz 802.11b (0); Frequency: 2442 MHz; Duty Cycle: 1:1.003
Medium: HSL_2450 Medium parameters used: $f = 2442$ MHz; $\sigma = 1.808$ S/m; $\epsilon_r = 38.829$; $\rho = 1000$ kg/m³

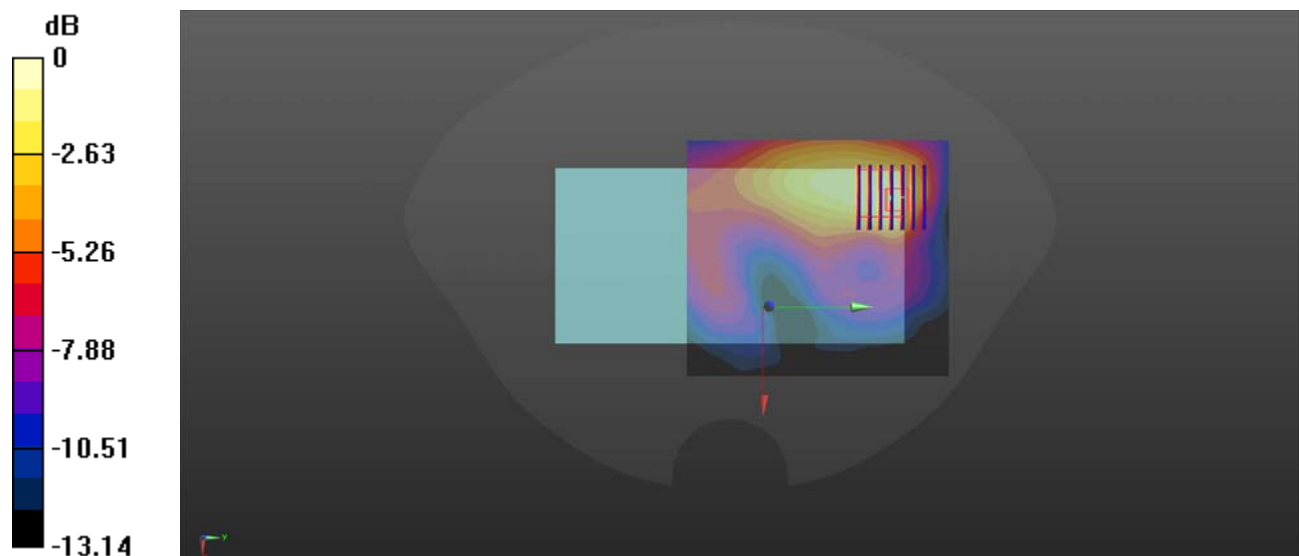
Ambient Temperature : 23.2 °C; Liquid Temperature : 22.5 °C

DASY5 Configuration:

- Probe: EX3DV4 - SN7608; ConvF(7.6, 7.6, 7.6) @ 2442 MHz; Calibrated: 2023.03.15
- Sensor-Surface: 2mm (Mechanical Surface Detection)
- Electronics: DAE4 Sn1643; Calibrated: 2023.02.22
- Phantom: Twin-SAM; Type: QD 000 P41 Ax; Serial: 2020
- Measurement SW: DASY52, Version 52.10 (4); SEMCAD X Version 14.6.14 (7483)

Ch7/Area Scan (91x101x1): Interpolated grid: dx=1.200 mm, dy=1.200 mm
Maximum value of SAR (interpolated) = 0.0954 W/kg

Ch7/Zoom Scan (7x7x7)/Cube 0: Measurement grid: dx=5mm, dy=5mm, dz=5mm
Reference Value = 2.599 V/m; Power Drift = 0.01 dB
Peak SAR (extrapolated) = 0.126 W/kg
SAR(1 g) = 0.062 W/kg; SAR(10 g) = 0.035 W/kg
Maximum value of SAR (measured) = 0.0913 W/kg



0 dB = 0.0954 W/kg

Test Laboratory: Shenzhen Morlab Communications Technology Co., Ltd.

Date: 2023.04.25

Bluetooth_DH5_Back Side_10mm_Ch78

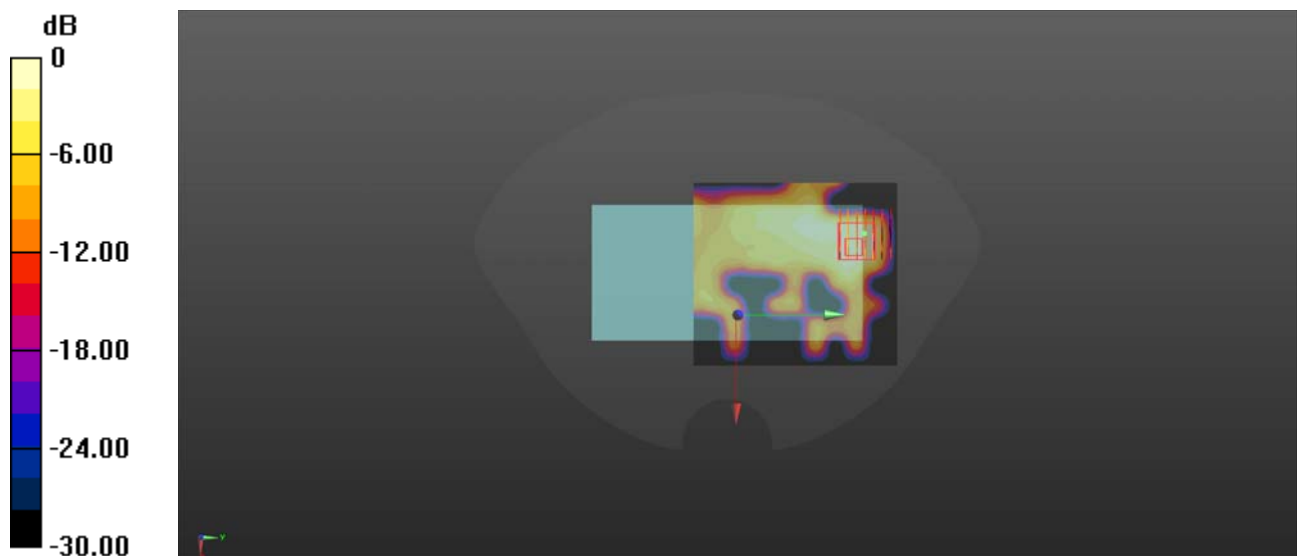
Communication System: UID 0, Bluetooth (0); Frequency: 2480 MHz; Duty Cycle: 1:1.293
Medium: HSL_2450 Medium parameters used: $f = 2480$ MHz; $\sigma = 1.839$ S/m; $\epsilon_r = 38.675$; $\rho = 1000$ kg/m³
Ambient Temperature : 23.2 °C; Liquid Temperature : 22.5 °C

DASY5 Configuration:

- Probe: EX3DV4 - SN7608; ConvF(7.6, 7.6, 7.6) @ 2480 MHz; Calibrated: 2023.03.15
- Sensor-Surface: 2mm (Mechanical Surface Detection)
- Electronics: DAE4 Sn1643; Calibrated: 2023.02.22
- Phantom: Twin-SAM; Type: QD 000 P41 Ax; Serial: 2020
- Measurement SW: DASY52, Version 52.10 (4); SEMCAD X Version 14.6.14 (7483)

Ch78/Area Scan (91x101x1): Interpolated grid: dx=1.200 mm, dy=1.200 mm
Maximum value of SAR (interpolated) = 0.0151 W/kg

Ch78/Zoom Scan (7x7x7)/Cube 0: Measurement grid: dx=5mm, dy=5mm, dz=5mm
Reference Value = 0 V/m; Power Drift = 0.00 dB
Peak SAR (extrapolated) = 0.0140 W/kg
SAR(1 g) = 0.00667 W/kg; SAR(10 g) = 0.00248 W/kg
Maximum value of SAR (measured) = 0.0109 W/kg



0 dB = 0.0109 W/kg