

EUT - Front View



EUT - Rear View



EUT - Top View



EUT - Bottom View



EUT - Left View



EUT - Right View



Annex B.ii. Photograph: EUT Internal Photo

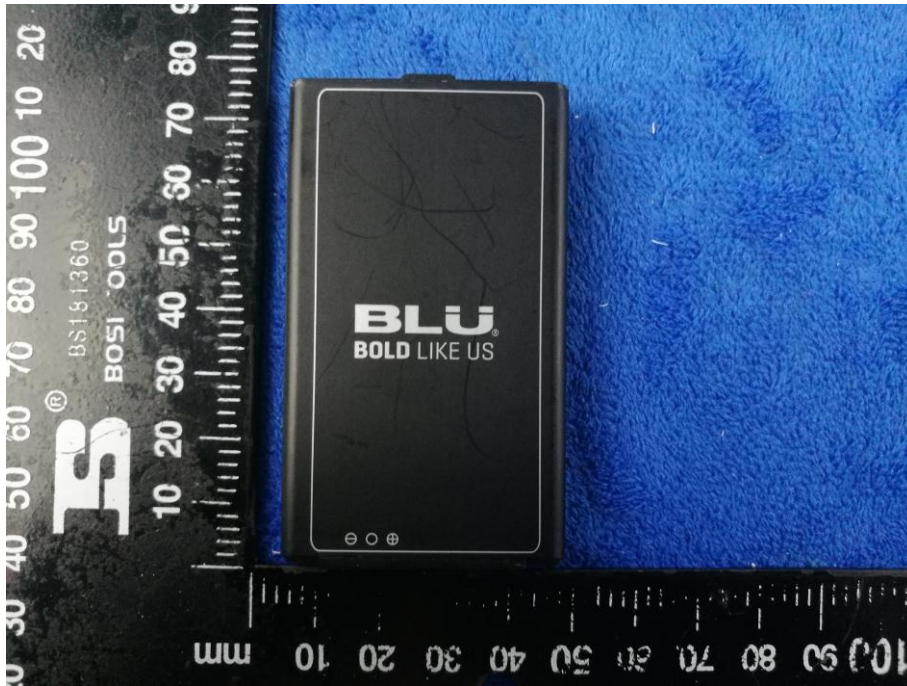
Cover Off - Top View 1



Cover Off - Top View 2



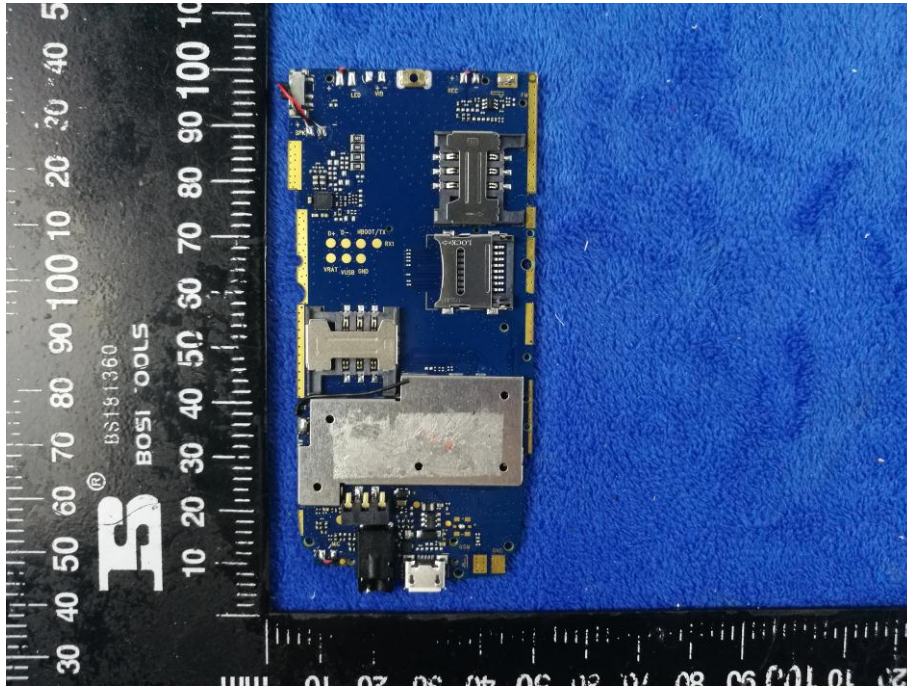
Battery - Front View



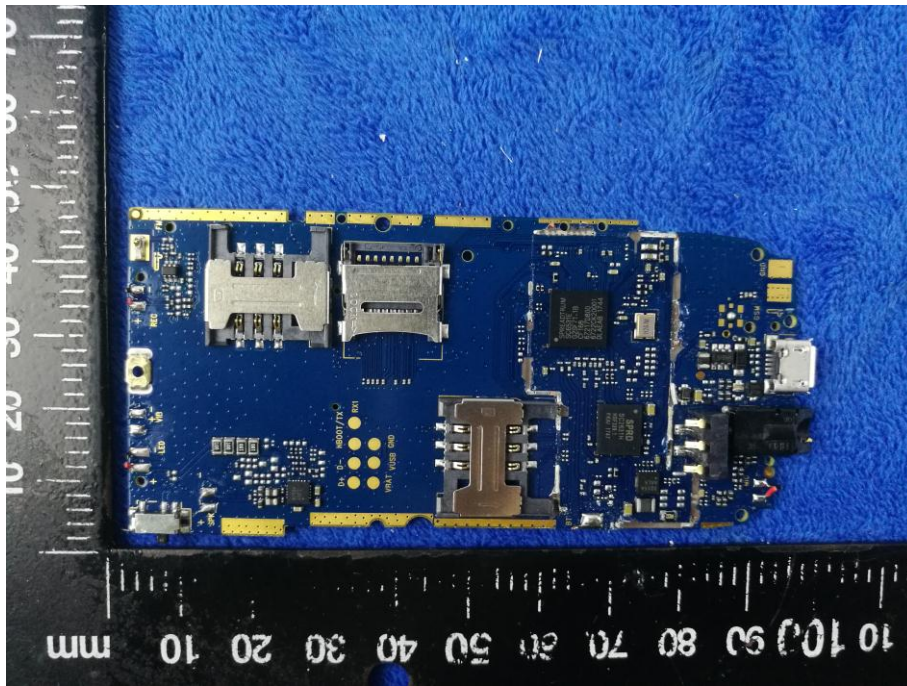
Battery - Rear View



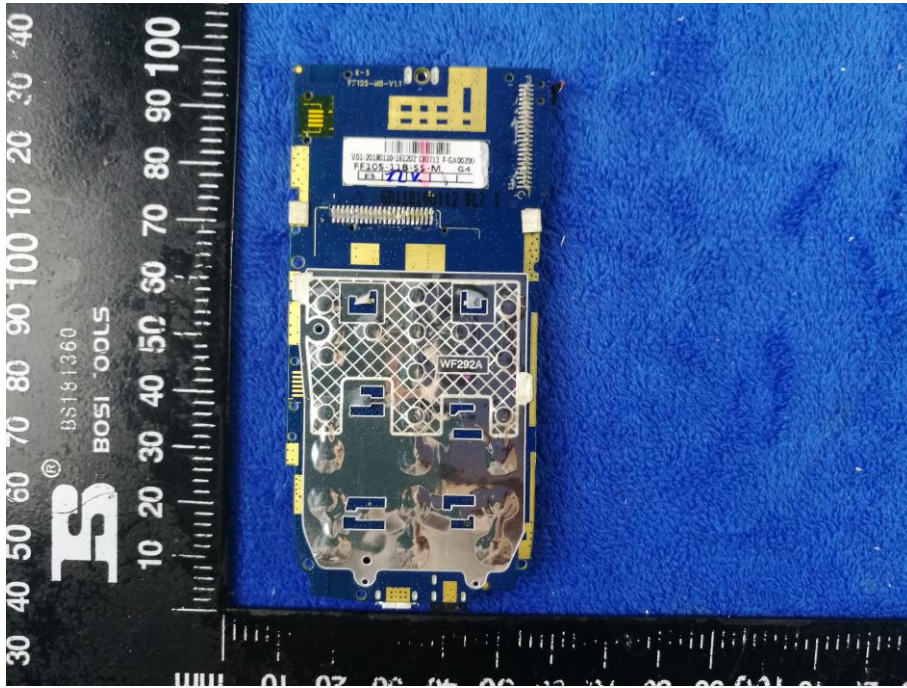
Mainboard with Shielding – Front View



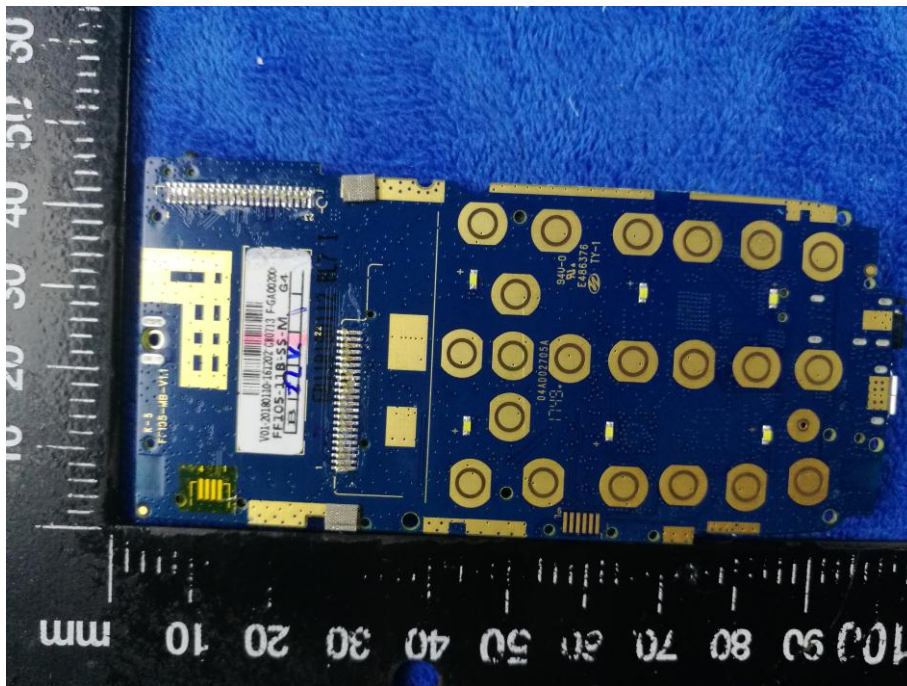
Mainboard without Shielding – Front View



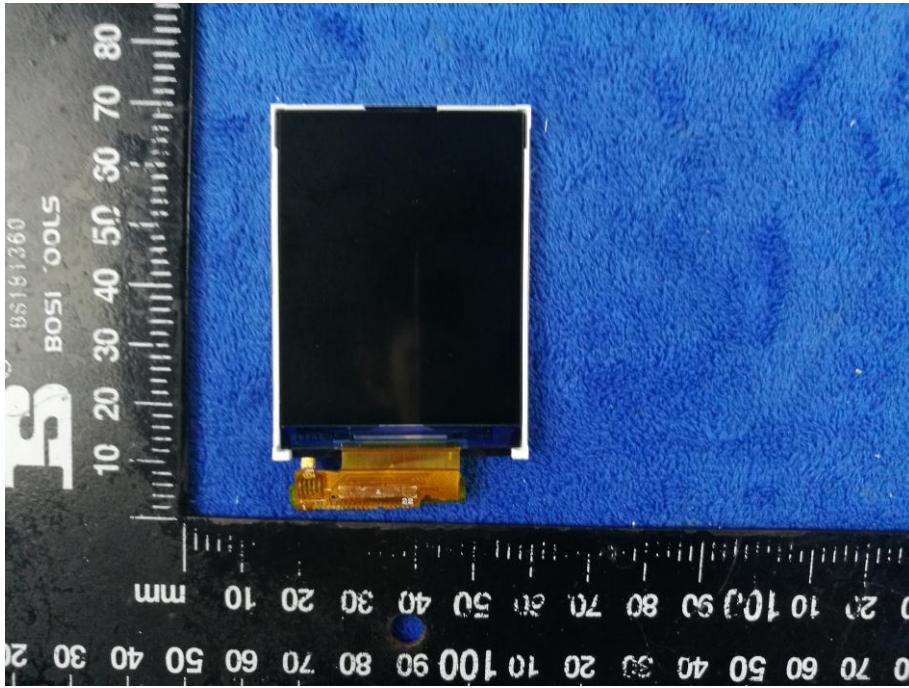
Mainboard with Shielding – Rear View



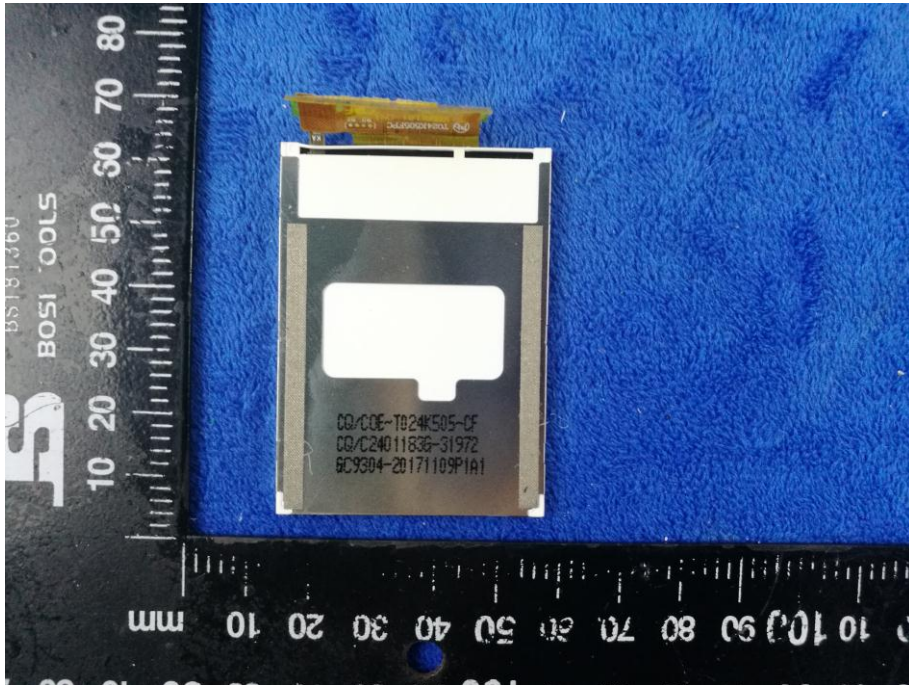
Mainboard without Shielding – Rear View



LCD – Front View



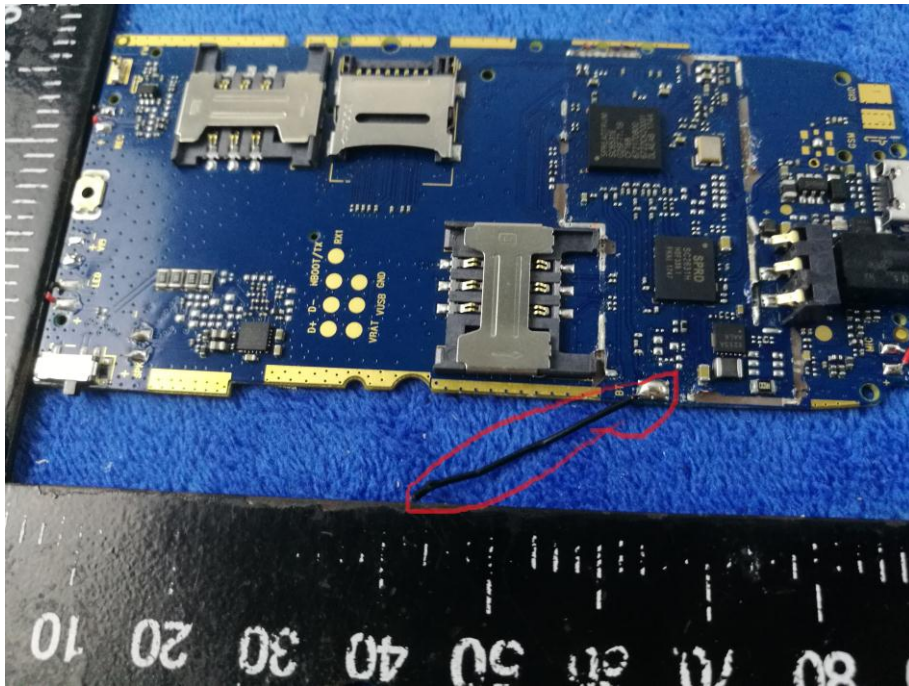
LCD – Rear View



GSM/PCS - Antenna View



BT - Antenna View



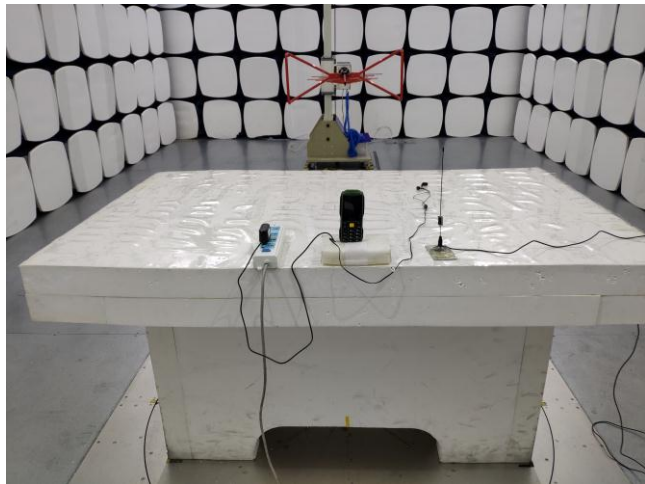
Annex B.iii. Photograph: Test Setup Photo



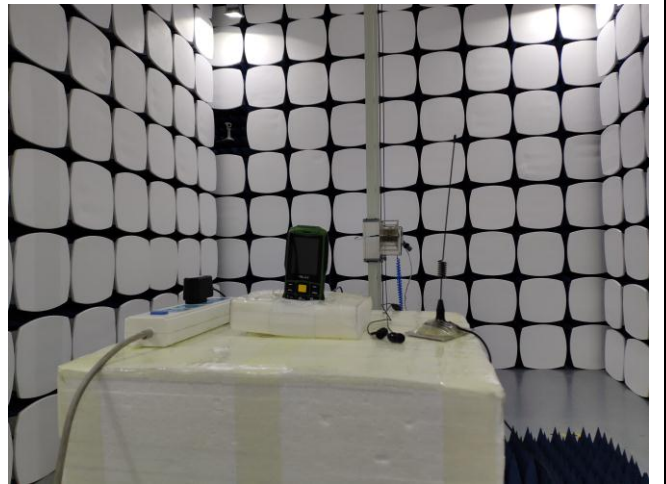
Conducted Emissions Test Setup Front View



Conducted Emissions Test Setup Side View



Radiated Spurious Emissions Test Setup Below 1GHz

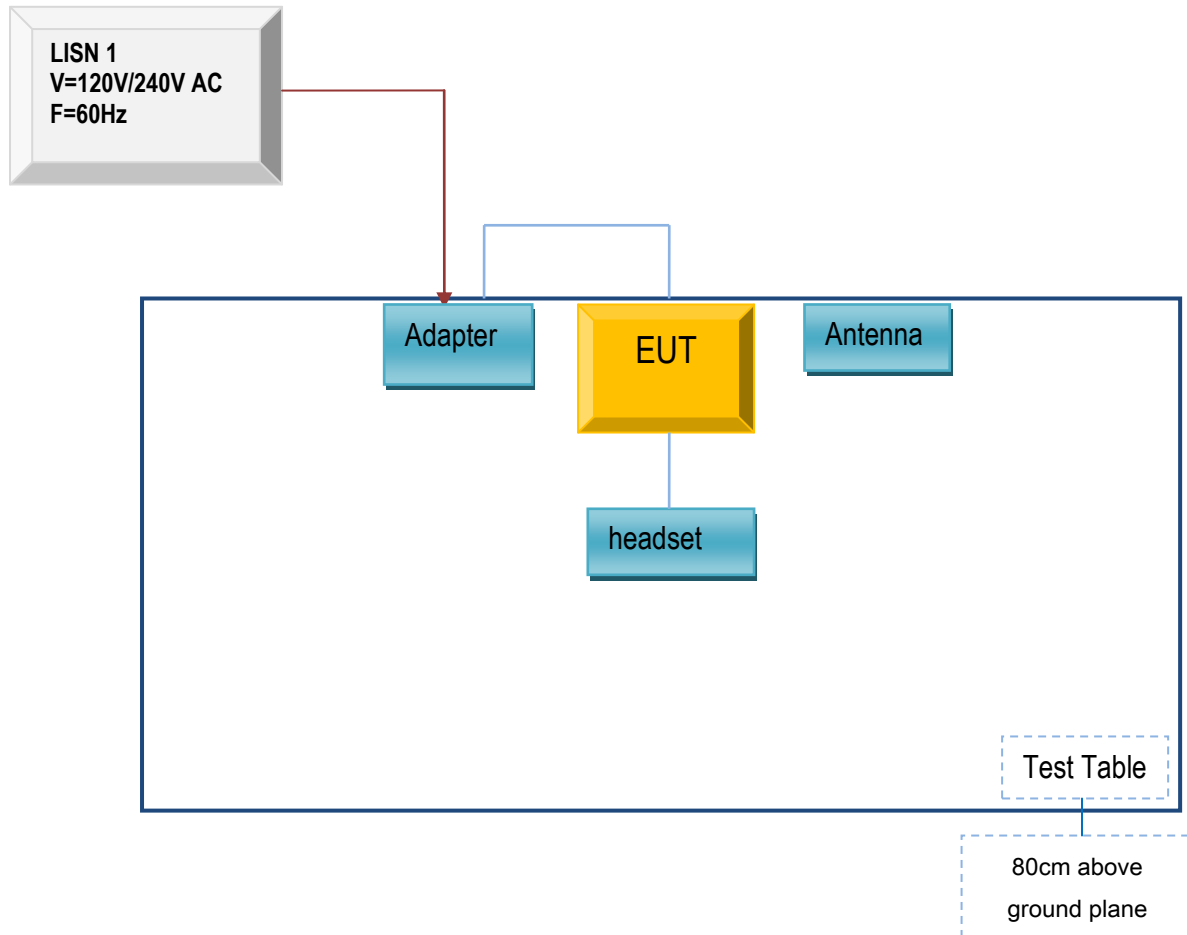


Radiated Spurious Emissions Test Setup Above
1GHz

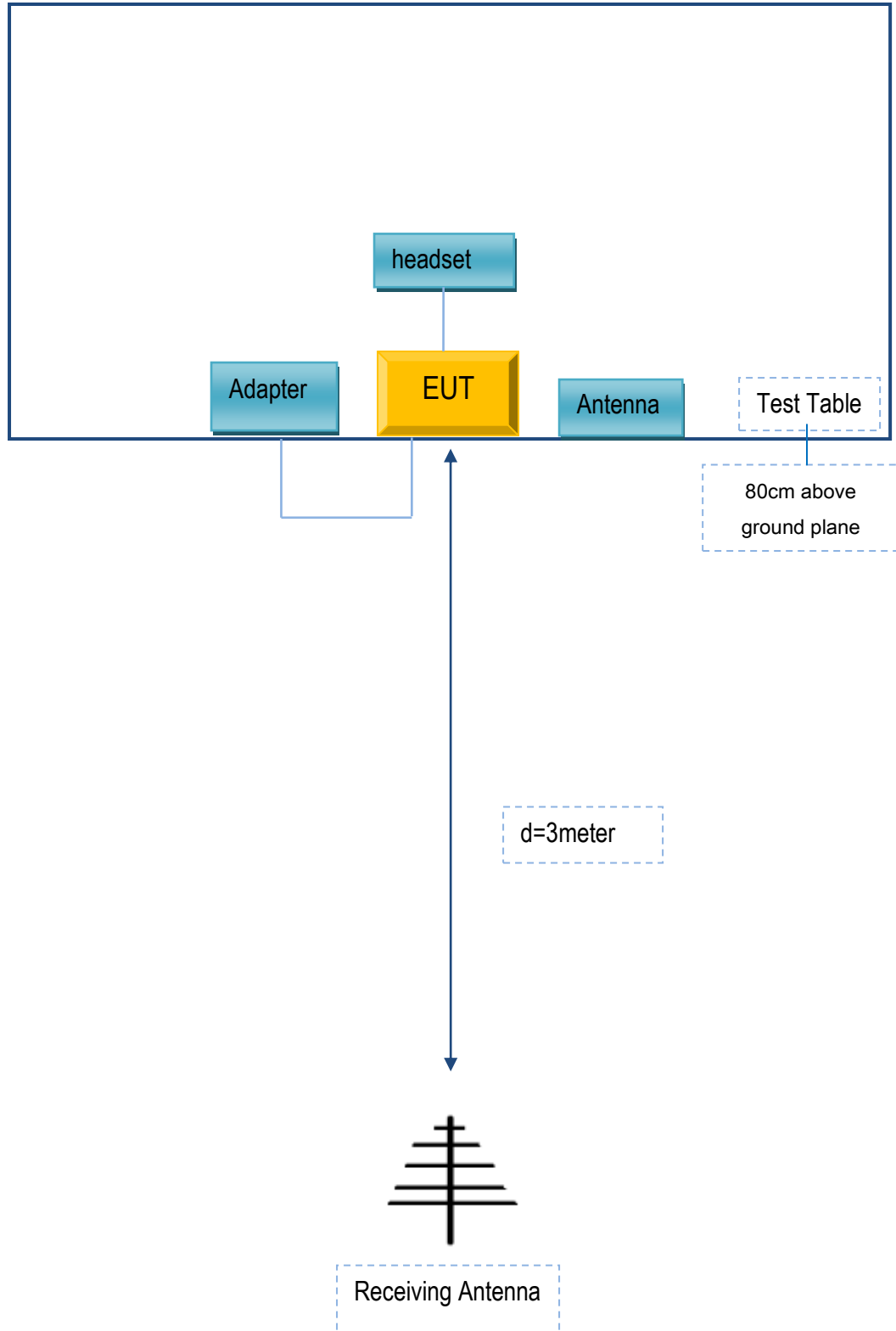
Annex C. TEST SETUP AND SUPPORTING EQUIPMENT

Annex C.ii. TEST SET UP BLOCK

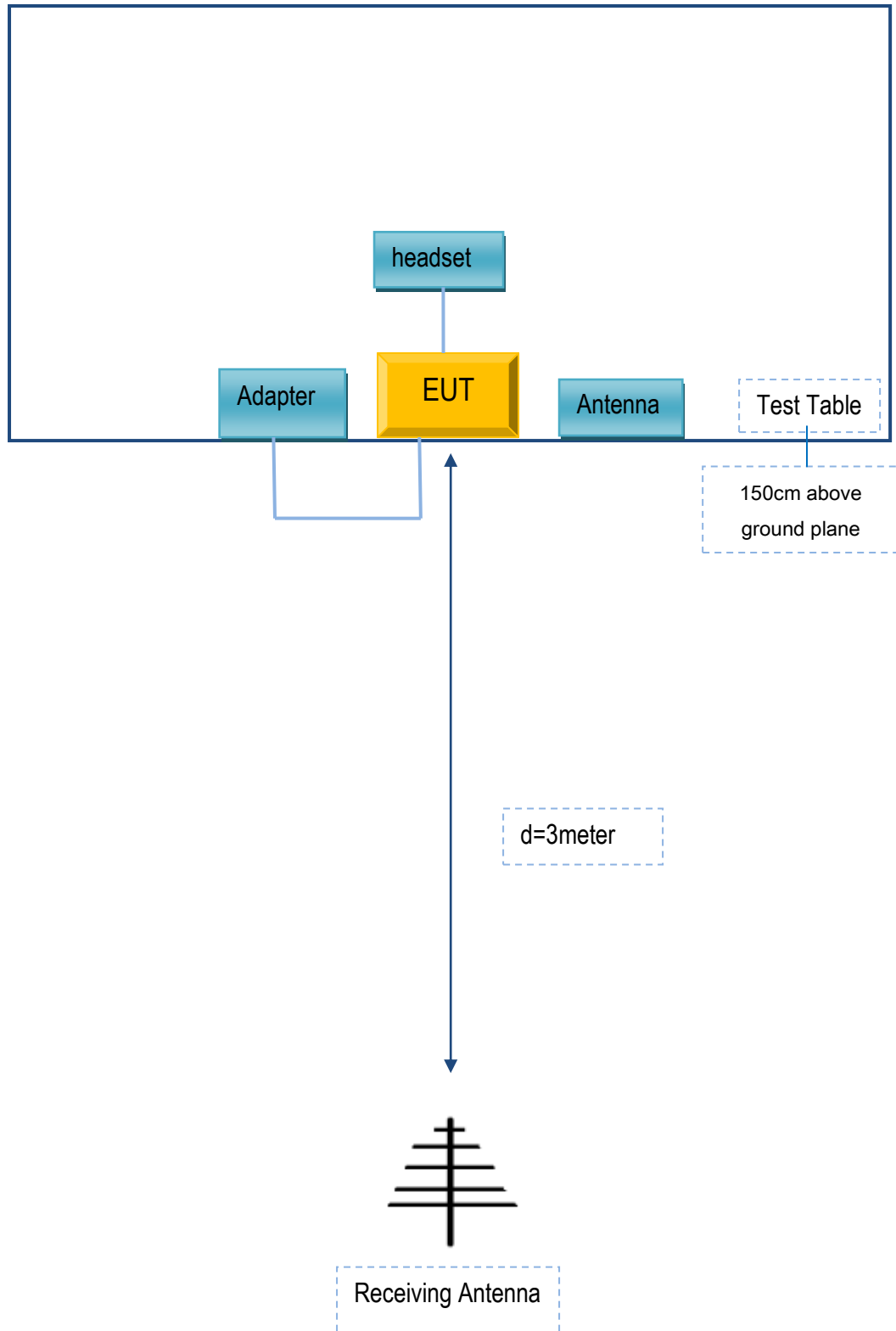
Block Configuration Diagram for AC Line Conducted Emissions



Block Configuration Diagram for Radiated Emissions (Below 1GHz) .



Block Configuration Diagram for Radiated Emissions (Above 1GHz) .



Annex C. ii. SUPPORTING EQUIPMENT DESCRIPTION

The following is a description of supporting equipment and details of cables used with the EUT.

Supporting Equipment:

Manufacturer	Equipment Description	Model	Serial No
BLU Products, Inc.	Adapter	US-WW-1003	N/A
BLU Products, Inc.	headset	FLASH 2.4	N/A
Agilent	Wireless Connectivity Test Set	N4010A	N/A
OEM	omnidirectional antenna	AntSuck	N/A

Supporting Cable:

Cable type	Shield Type	Ferrite Core	Length	Serial No
USB Cable	Un-shielding	No	0.8m	N/A

Test Report	18070334-FCC-R2
Page	65 of 66

Annex D. User Manual / Block Diagram / Schematics / Partlist

Please see the attachment

Test Report	18070334-FCC-R2
Page	66 of 66

Annex E. DECLARATION OF SIMILARITY

N/A