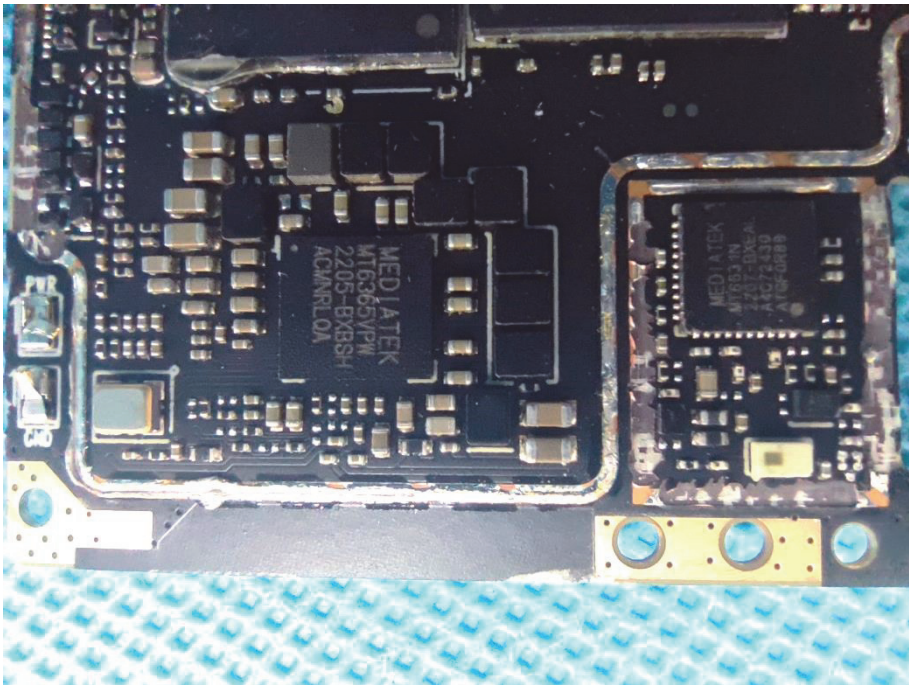
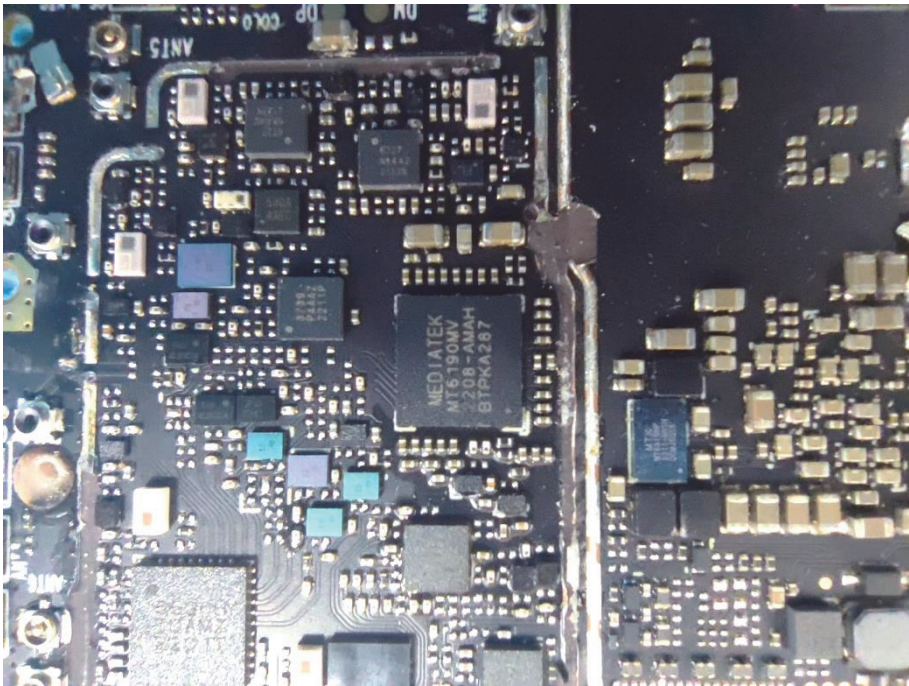
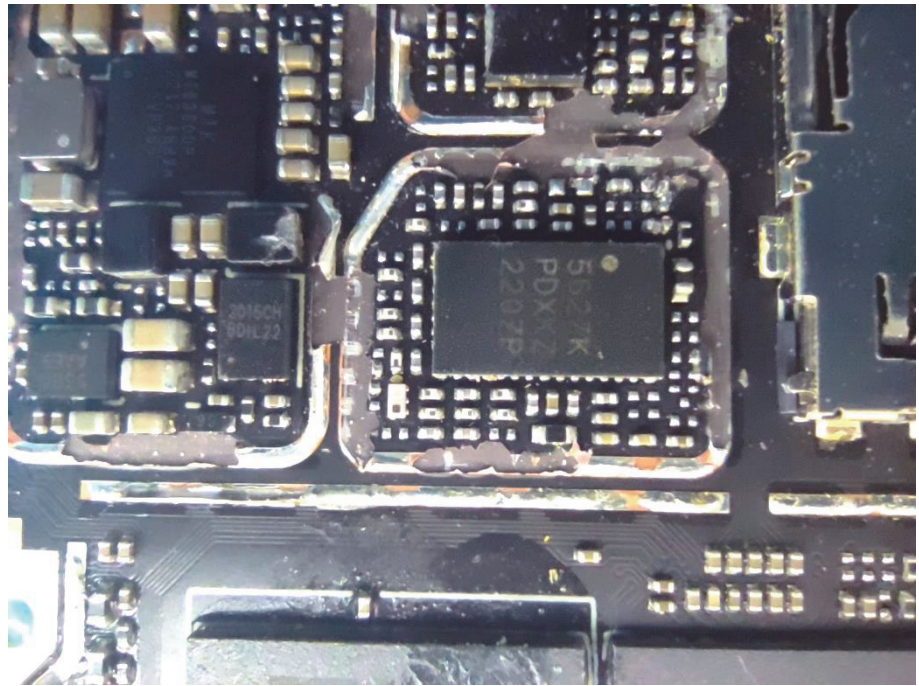
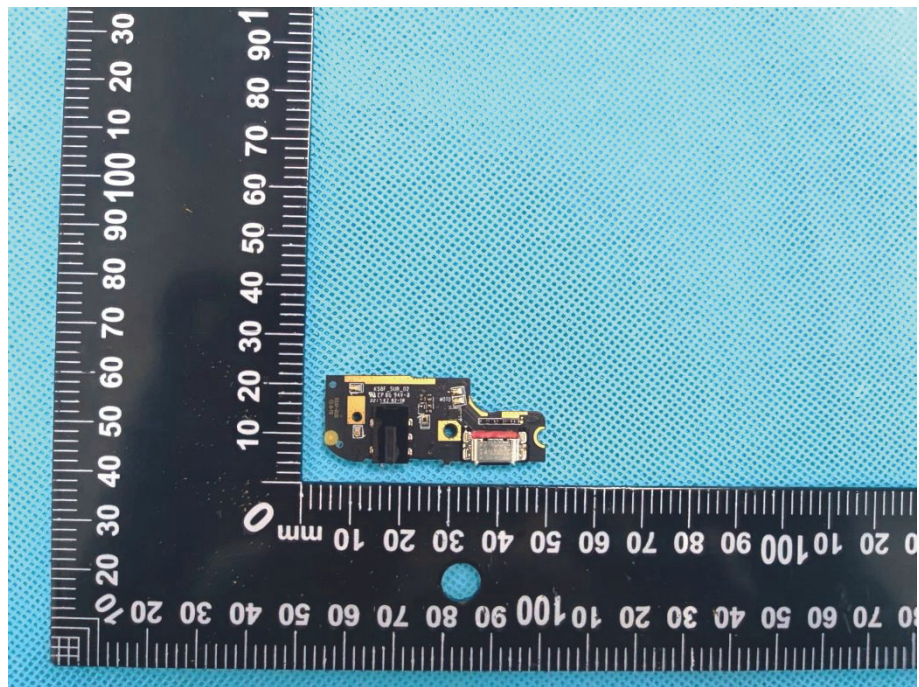


<p><b>Solder Board-Component View 5</b></p>	 A microscopic view of a PCB component. The central chip is labeled 'MEDiatek MT6365PW 2205-BXSH ACINRLOA'. To the right, another chip is labeled 'MEDiatek MT6330 2217-BX6A 4472430 AT08-0888'. The board is dark blue with various components and solder joints.
<p><b>Solder Board-Component View 6</b></p>	 A microscopic view of a PCB component. The central chip is labeled 'MEDiatek MT6190MH 2208-AMH 81PRA287'. The board is dark blue with various components and solder joints.

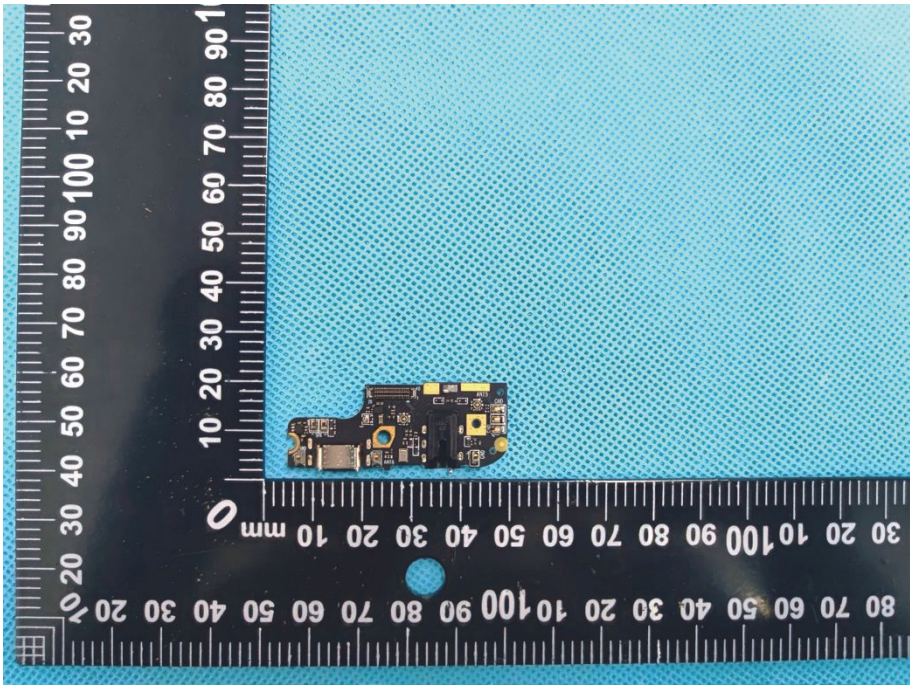

**Solder  
Board-Component  
View 7**



**Solder  
Board-Component  
View 8**





<p style="text-align: center;"><b>Solder Board-Component View 9</b></p>	 <p>A photograph of a small, rectangular printed circuit board (PCB) component, likely an antenna, resting on a blue textured surface. A black ruler with white markings is placed to the left and bottom of the component for scale. The ruler shows millimeter and centimeter markings. The component has several gold-colored pads and a small blue component on its surface.</p>
<p style="text-align: center;"><b>Antenna View</b></p>	 <p>A photograph of a smartphone with its back cover removed, showing the internal antenna layout. The phone is placed on a blue textured surface with a black ruler for scale. Red boxes with white text callouts identify various antenna components:</p> <ul style="list-style-type: none"> <li><b>ANT4 TRX</b> LTE: B41; 5G NR: n41</li> <li><b>ANT2 TRX</b> GSM1900; WCDMA B2/4 LTE B2/4/25/66</li> <li><b>WIFI/BT/GPS Antenna</b></li> <li><b>ANT3 DRX</b> LTE B41; NR5G</li> <li><b>ANT7 DRX</b> LTE B41 NR5G N41</li> <li><b>ANT5 DRX:</b> LTE: B41 NR5G: N41</li> <li><b>ANT6 TRX:</b> GSM: B5 TRX; WCDMA: B5 LTE: B5/12/13/17/26/71 NR 5G: n5/n71</li> </ul>