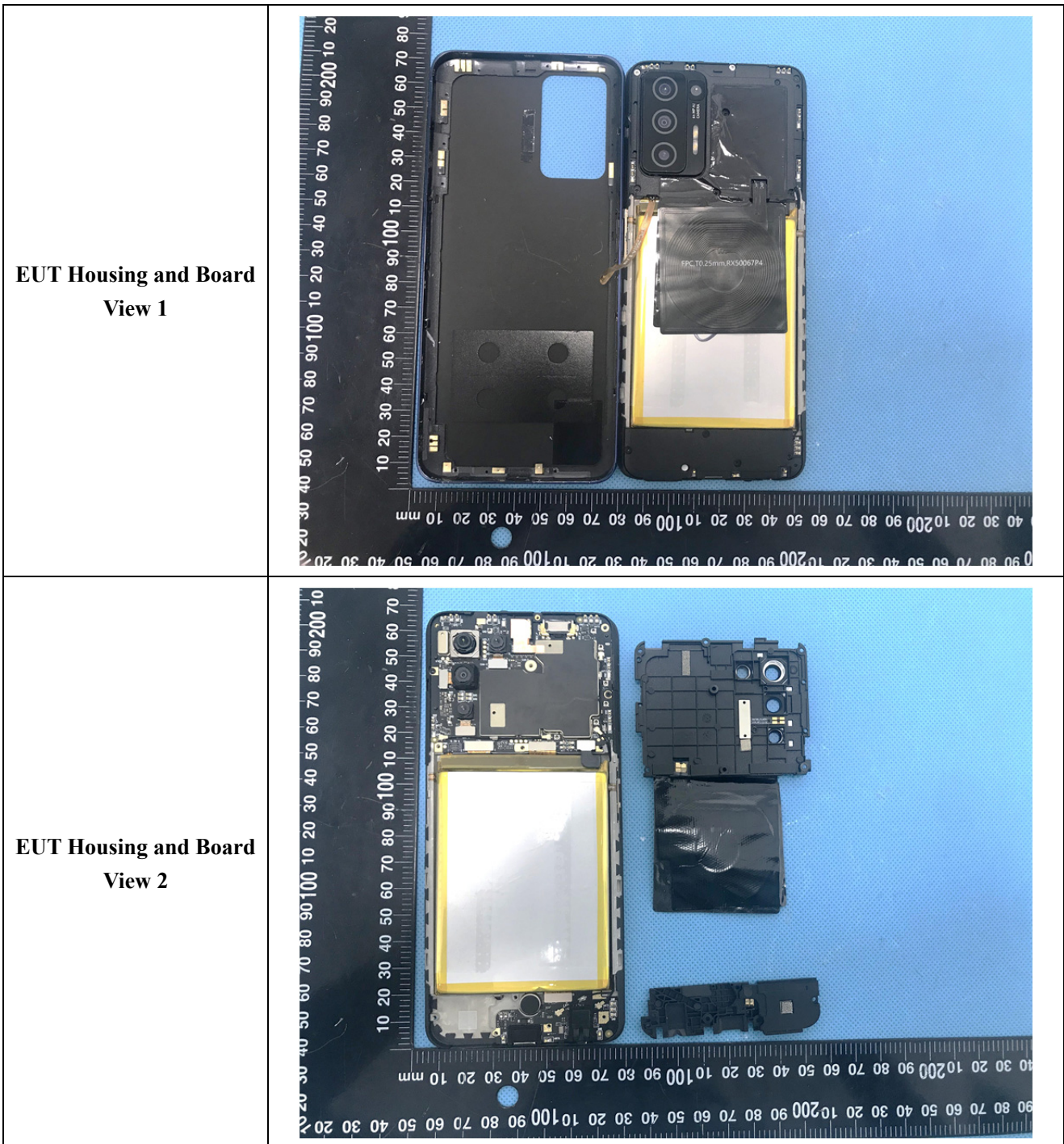
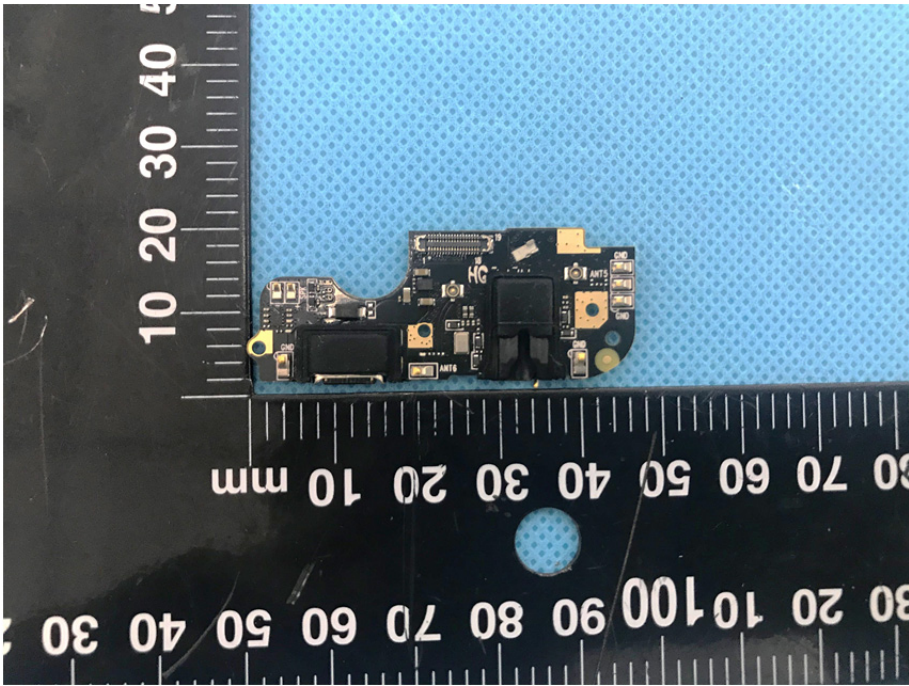
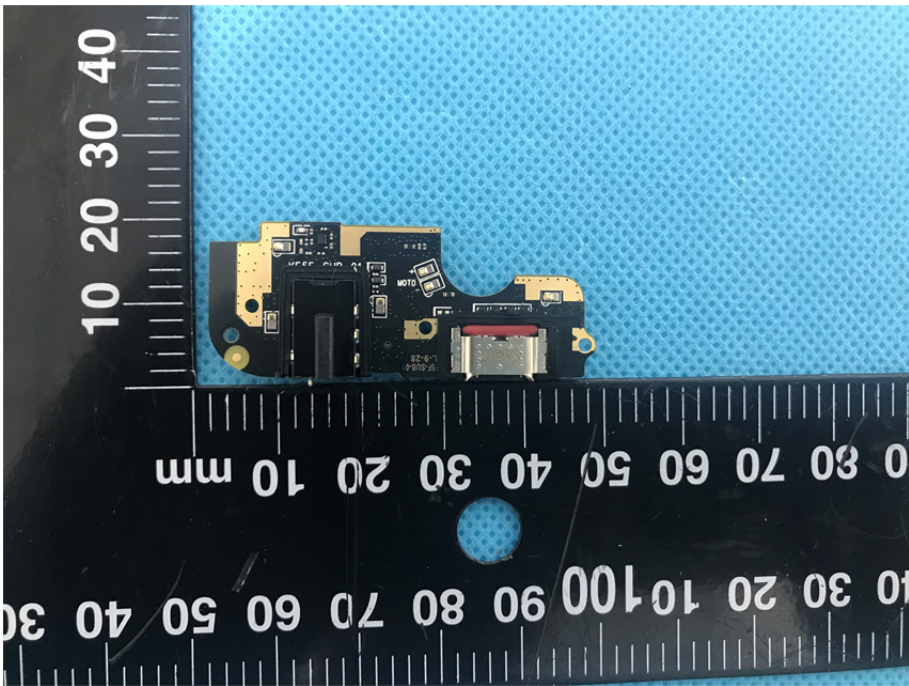
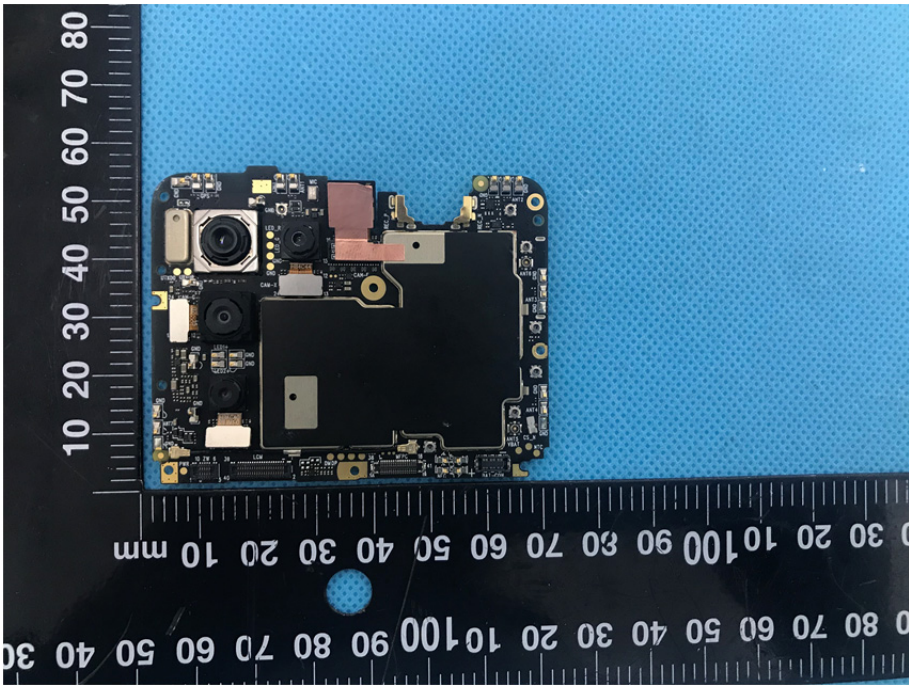
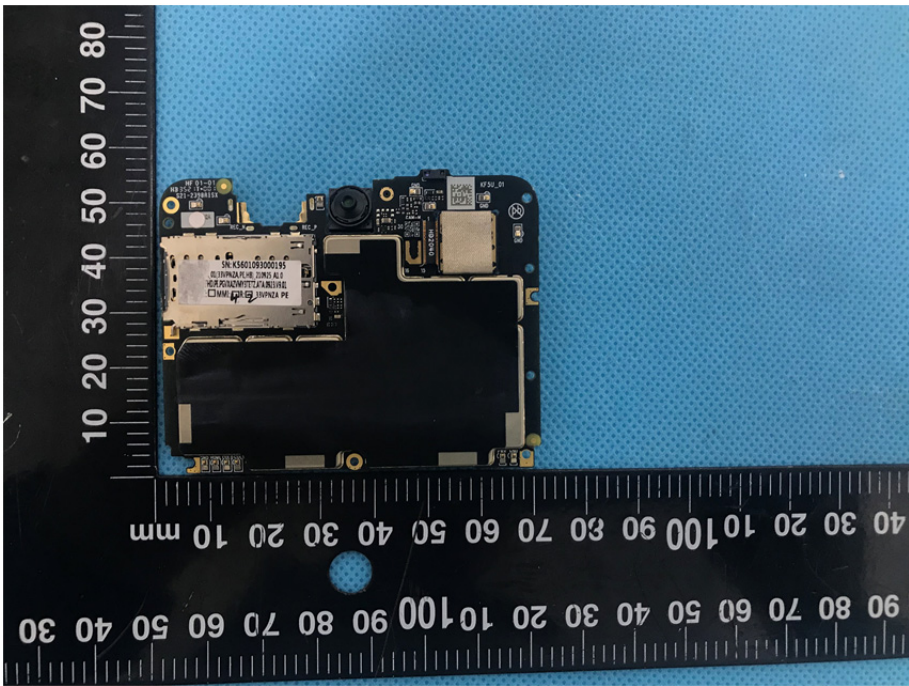
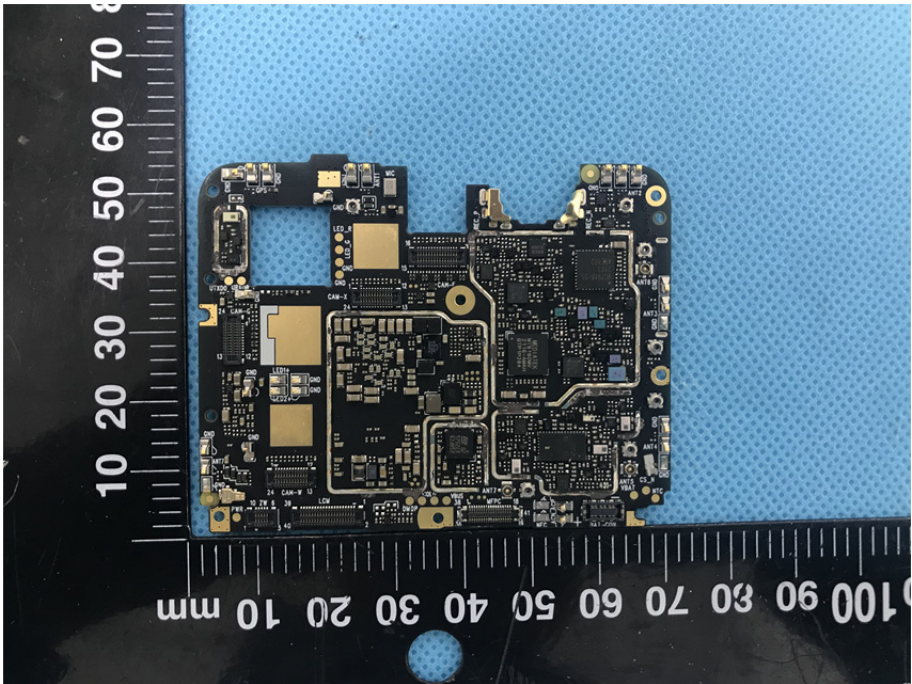



EXHIBIT 3 - EUT INTERNAL PHOTOGRAPHS



<p>Solder Board-Component View 1</p>	 A photograph of a small, irregularly shaped printed circuit board (PCB) component. The board is dark green or black with various electronic components, including a large black integrated circuit (IC) in the center, several smaller components, and gold-colored pads. The component is placed on a blue perforated surface. A black ruler with white markings is positioned below the component, showing measurements in millimeters. The ruler markings are visible on both the left and bottom edges of the component.
<p>Solder Board-Component View 2</p>	 A photograph of the same PCB component from a different perspective. This view shows the underside of the component, revealing the solder joints and the components mounted on the reverse side. The component is placed on the same blue perforated surface. A black ruler with white markings is positioned below the component, showing measurements in millimeters. The ruler markings are visible on both the left and bottom edges of the component.

<p style="text-align: center;">Solder Board-Component View 3</p>	 A photograph of a mobile phone's internal solder board component. The board is dark green and populated with various electronic components including a camera lens, microphone, and various integrated circuits. It is placed on a blue textured surface next to a black ruler with white markings. The ruler shows measurements in millimeters, with the component spanning approximately 60mm in width and 40mm in height.
<p style="text-align: center;">Solder Board-Component View 4</p>	 A photograph of a mobile phone's internal solder board component, similar to view 3 but from a different angle. This view shows a large silver component, likely a battery or a large capacitor, with printed text including 'SN: K560105000285' and 'WALTEK TESTING GROUP (SHENZHEN) CO., LTD.'. The board is placed on a blue textured surface next to a black ruler with white markings. The ruler shows measurements in millimeters, with the component spanning approximately 60mm in width and 40mm in height.

<p style="text-align: center;">Solder Board-Component View 5</p>	 A photograph of a mobile phone motherboard (Solder Board-Component View 5) placed on a blue textured surface. A black ruler with white markings is positioned vertically on the left and horizontally at the bottom. The vertical ruler shows markings from 10 to 80 mm. The horizontal ruler shows markings from 10 to 100 mm. The board is populated with various components including a large central processor, memory chips, and camera modules. Labels like 'CAM-1', 'CAM-2', 'ANT1', and 'ANT2' are visible on the board.
<p style="text-align: center;">Solder Board-Component View 6</p>	 A photograph of a mobile phone motherboard (Solder Board-Component View 6) placed on a blue textured surface. A black ruler with white markings is positioned vertically on the left and horizontally at the bottom. The vertical ruler shows markings from 10 to 70 mm. The horizontal ruler shows markings from 10 to 100 mm. This view shows the SIM card slot area with a silver SIM card partially inserted. Other components like the processor, memory, and camera modules are also visible. Labels like 'SIM', 'CAM-1', and 'CAM-2' are present.

